



# Full wwPDB X-ray Structure Validation Report ⓘ

May 21, 2020 – 11:41 pm BST

PDB ID : 6I4Q  
Title : Crystal structure of the human dihydrolipoamide dehydrogenase at 1.75 Angstrom resolution  
Authors : Nagy, B.; Szabo, E.; Wilk, P.; Torocsik, B.; Weiss, M.S.; Adam-Vizi, V.; Ambrus, A.  
Deposited on : 2018-11-10  
Resolution : 1.75 Å(reported)

This is a Full wwPDB X-ray Structure Validation Report for a publicly released PDB entry.

We welcome your comments at [validation@mail.wwpdb.org](mailto:validation@mail.wwpdb.org)

A user guide is available at

<https://www.wwpdb.org/validation/2017/XrayValidationReportHelp>

with specific help available everywhere you see the ⓘ symbol.

---

The following versions of software and data (see [references ⓘ](#)) were used in the production of this report:

MolProbity : 4.02b-467  
Mogul : 1.8.5 (274361), CSD as541be (2020)  
Xtriage (Phenix) : 1.13  
EDS : 2.11  
buster-report : 1.1.7 (2018)  
Percentile statistics : 20191225.v01 (using entries in the PDB archive December 25th 2019)  
Refmac : 5.8.0158  
CCP4 : 7.0.044 (Gargrove)  
Ideal geometry (proteins) : Engh & Huber (2001)  
Ideal geometry (DNA, RNA) : Parkinson et al. (1996)  
Validation Pipeline (wwPDB-VP) : 2.11

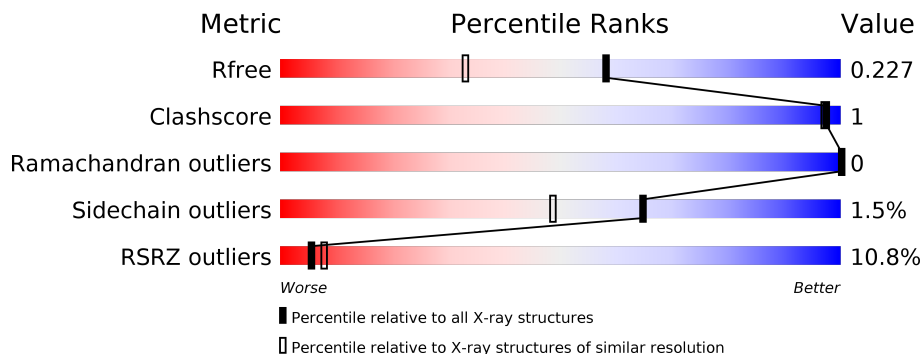
# 1 Overall quality at a glance

The following experimental techniques were used to determine the structure:

*X-RAY DIFFRACTION*

The reported resolution of this entry is 1.75 Å.

Percentile scores (ranging between 0-100) for global validation metrics of the entry are shown in the following graphic. The table shows the number of entries on which the scores are based.



Metric	Whole archive (#Entries)	Similar resolution (#Entries, resolution range(Å))
$R_{free}$	130704	2340 (1.76-1.76)
Clashscore	141614	2466 (1.76-1.76)
Ramachandran outliers	138981	2437 (1.76-1.76)
Sidechain outliers	138945	2437 (1.76-1.76)
RSRZ outliers	127900	2298 (1.76-1.76)

The table below summarises the geometric issues observed across the polymeric chains and their fit to the electron density. The red, orange, yellow and green segments on the lower bar indicate the fraction of residues that contain outliers for  $\geq 3$ , 2, 1 and 0 types of geometric quality criteria respectively. A grey segment represents the fraction of residues that are not modelled. The numeric value for each fraction is indicated below the corresponding segment, with a dot representing fractions  $\leq 5\%$ . The upper red bar (where present) indicates the fraction of residues that have poor fit to the electron density. The numeric value is given above the bar.

Mol	Chain	Length	Quality of chain
1	A	496	 9% 92% 5%
1	B	496	 11% 94% 5%

The following table lists non-polymeric compounds, carbohydrate monomers and non-standard residues in protein, DNA, RNA chains that are outliers for geometric or electron-density-fit criteria:

Mol	Type	Chain	Res	Chirality	Geometry	Clashes	Electron density
3	BTB	B	502	-	-	-	X

## 2 Entry composition [i](#)

There are 5 unique types of molecules in this entry. The entry contains 15331 atoms, of which 7427 are hydrogens and 0 are deuteriums.

In the tables below, the ZeroOcc column contains the number of atoms modelled with zero occupancy, the AltConf column contains the number of residues with at least one atom in alternate conformation and the Trace column contains the number of residues modelled with at most 2 atoms.

- Molecule 1 is a protein called Dihydrolipoyl dehydrogenase, mitochondrial.

Mol	Chain	Residues	Atoms						ZeroOcc	AltConf	Trace
			Total	C	H	N	O	S			
1	A	472	7219	2254	3648	616	677	24	0	12	0
1	B	481	7291	2280	3679	623	686	23	0	8	0

There are 44 discrepancies between the modelled and reference sequences:

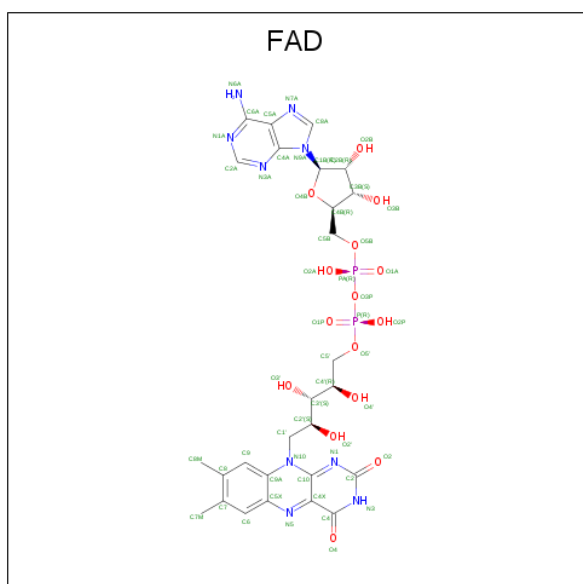
Chain	Residue	Modelled	Actual	Comment	Reference
A	-21	MET	-	initiating methionine	UNP P09622
A	-20	ALA	-	expression tag	UNP P09622
A	-19	SER	-	expression tag	UNP P09622
A	-18	TRP	-	expression tag	UNP P09622
A	-17	SER	-	expression tag	UNP P09622
A	-16	HIS	-	expression tag	UNP P09622
A	-15	PRO	-	expression tag	UNP P09622
A	-14	GLN	-	expression tag	UNP P09622
A	-13	PHE	-	expression tag	UNP P09622
A	-12	GLU	-	expression tag	UNP P09622
A	-11	LYS	-	expression tag	UNP P09622
A	-10	GLY	-	expression tag	UNP P09622
A	-9	ALA	-	expression tag	UNP P09622
A	-8	LEU	-	expression tag	UNP P09622
A	-7	GLU	-	expression tag	UNP P09622
A	-6	VAL	-	expression tag	UNP P09622
A	-5	LEU	-	expression tag	UNP P09622
A	-4	PHE	-	expression tag	UNP P09622
A	-3	GLN	-	expression tag	UNP P09622
A	-2	GLY	-	expression tag	UNP P09622
A	-1	PRO	-	expression tag	UNP P09622
A	0	GLY	-	expression tag	UNP P09622
B	-21	MET	-	initiating methionine	UNP P09622
B	-20	ALA	-	expression tag	UNP P09622
B	-19	SER	-	expression tag	UNP P09622

*Continued on next page...*

Continued from previous page...

Chain	Residue	Modelled	Actual	Comment	Reference
B	-18	TRP	-	expression tag	UNP P09622
B	-17	SER	-	expression tag	UNP P09622
B	-16	HIS	-	expression tag	UNP P09622
B	-15	PRO	-	expression tag	UNP P09622
B	-14	GLN	-	expression tag	UNP P09622
B	-13	PHE	-	expression tag	UNP P09622
B	-12	GLU	-	expression tag	UNP P09622
B	-11	LYS	-	expression tag	UNP P09622
B	-10	GLY	-	expression tag	UNP P09622
B	-9	ALA	-	expression tag	UNP P09622
B	-8	LEU	-	expression tag	UNP P09622
B	-7	GLU	-	expression tag	UNP P09622
B	-6	VAL	-	expression tag	UNP P09622
B	-5	LEU	-	expression tag	UNP P09622
B	-4	PHE	-	expression tag	UNP P09622
B	-3	GLN	-	expression tag	UNP P09622
B	-2	GLY	-	expression tag	UNP P09622
B	-1	PRO	-	expression tag	UNP P09622
B	0	GLY	-	expression tag	UNP P09622

- Molecule 2 is FLAVIN-ADENINE DINUCLEOTIDE (three-letter code: FAD) (formula:  $C_{27}H_{33}N_9O_{15}P_2$ ).



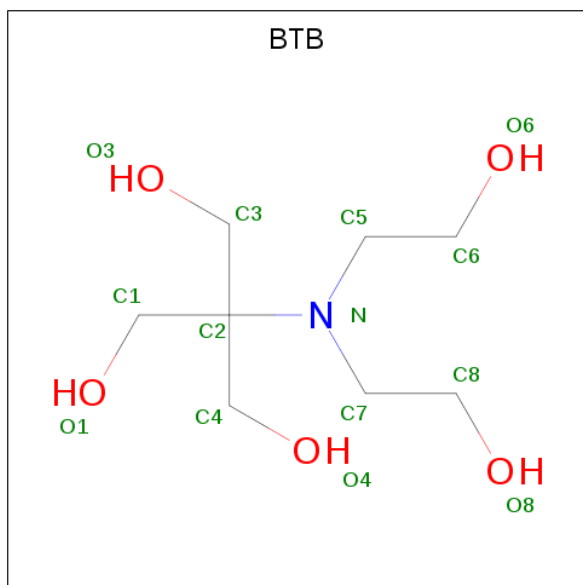
Mol	Chain	Residues	Atoms					ZeroOcc	AltConf	
			Total	C	H	N	O			P
2	A	1	84	27	31	9	15	2	0	0

Continued on next page...

Continued from previous page...

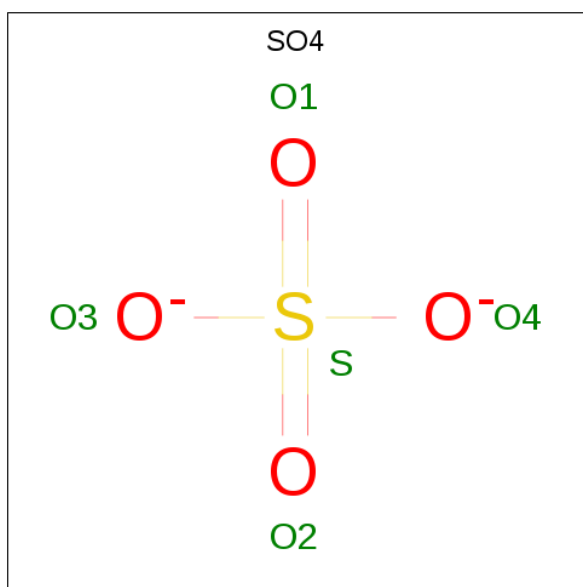
Mol	Chain	Residues	Atoms					ZeroOcc	AltConf	
			Total	C	H	N	O			P
2	B	1	84	27	31	9	15	2	0	0

- Molecule 3 is 2-[BIS-(2-HYDROXY-ETHYL)-AMINO]-2-HYDROXYMETHYL-PROPAN E-1,3-DIOL (three-letter code: BTB) (formula: C<sub>8</sub>H<sub>19</sub>NO<sub>5</sub>).



Mol	Chain	Residues	Atoms					ZeroOcc	AltConf
			Total	C	H	N	O		
3	A	1	33	8	19	1	5	0	0
3	B	1	33	8	19	1	5	0	0

- Molecule 4 is SULFATE ION (three-letter code: SO<sub>4</sub>) (formula: O<sub>4</sub>S).



Mol	Chain	Residues	Atoms	ZeroOcc	AltConf
4	A	1	Total O S 5 4 1	0	0
4	A	1	Total O S 5 4 1	0	0
4	A	1	Total O S 5 4 1	0	0
4	A	1	Total O S 5 4 1	0	0
4	A	1	Total O S 5 4 1	0	0
4	A	1	Total O S 5 4 1	0	0
4	B	1	Total O S 5 4 1	0	0
4	B	1	Total O S 5 4 1	0	0
4	B	1	Total O S 5 4 1	0	0
4	B	1	Total O S 5 4 1	0	0

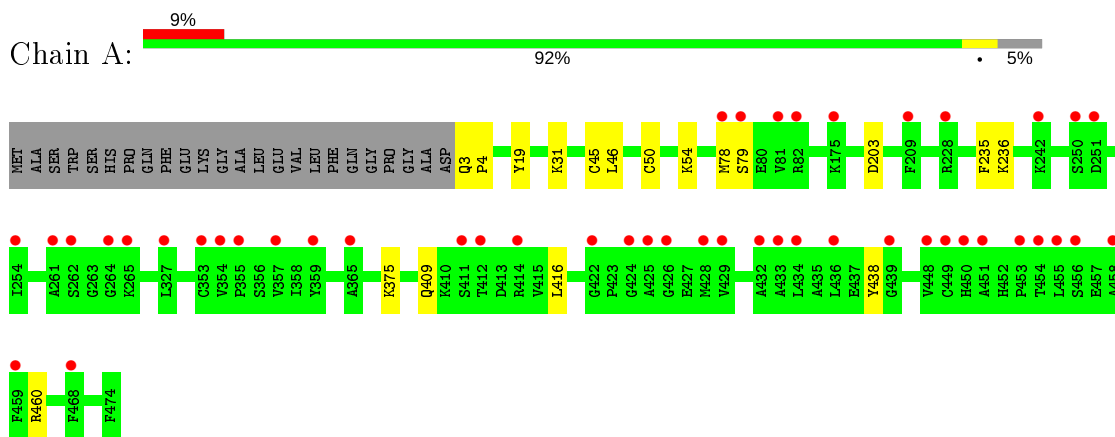
- Molecule 5 is water.

Mol	Chain	Residues	Atoms	ZeroOcc	AltConf
5	A	288	Total O 288 288	0	0
5	B	249	Total O 249 249	0	0

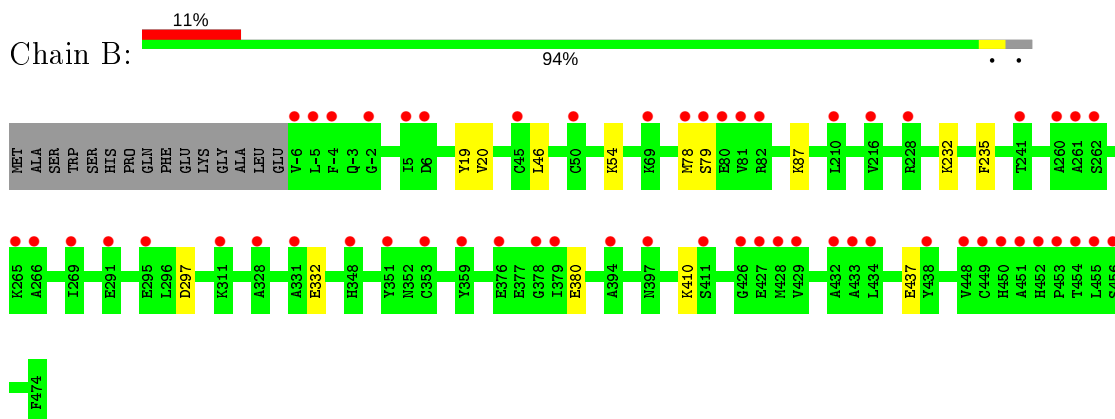
### 3 Residue-property plots [i](#)

These plots are drawn for all protein, RNA and DNA chains in the entry. The first graphic for a chain summarises the proportions of the various outlier classes displayed in the second graphic. The second graphic shows the sequence view annotated by issues in geometry and electron density. Residues are color-coded according to the number of geometric quality criteria for which they contain at least one outlier: green = 0, yellow = 1, orange = 2 and red = 3 or more. A red dot above a residue indicates a poor fit to the electron density ( $RSRZ > 2$ ). Stretches of 2 or more consecutive residues without any outlier are shown as a green connector. Residues present in the sample, but not in the model, are shown in grey.

- Molecule 1: Dihydrolipoyl dehydrogenase, mitochondrial



- Molecule 1: Dihydrolipoyl dehydrogenase, mitochondrial





## 4 Data and refinement statistics

Property	Value	Source
Space group	P 21 21 2	Depositor
Cell constants a, b, c, $\alpha$ , $\beta$ , $\gamma$	119.41Å 169.94Å 61.55Å 90.00° 90.00° 90.00°	Depositor
Resolution (Å)	46.00 – 1.75 46.00 – 1.75	Depositor EDS
% Data completeness (in resolution range)	97.3 (46.00-1.75) 96.5 (46.00-1.75)	Depositor EDS
$R_{merge}$	0.09	Depositor
$R_{sym}$	(Not available)	Depositor
$\langle I/\sigma(I) \rangle$ <sup>1</sup>	1.03 (at 1.75Å)	Xtrriage
Refinement program	PHENIX	Depositor
R, $R_{free}$	0.205 , 0.224 0.209 , 0.227	Depositor DCC
$R_{free}$ test set	2066 reflections (1.68%)	wwPDB-VP
Wilson B-factor (Å <sup>2</sup> )	32.0	Xtrriage
Anisotropy	0.625	Xtrriage
Bulk solvent $k_{sol}$ (e/Å <sup>3</sup> ), $B_{sol}$ (Å <sup>2</sup> )	0.39 , 43.3	EDS
L-test for twinning <sup>2</sup>	$\langle  L  \rangle = 0.50$ , $\langle L^2 \rangle = 0.34$	Xtrriage
Estimated twinning fraction	No twinning to report.	Xtrriage
$F_o, F_c$ correlation	0.97	EDS
Total number of atoms	15331	wwPDB-VP
Average B, all atoms (Å <sup>2</sup> )	54.0	wwPDB-VP

Xtrriage's analysis on translational NCS is as follows: *The largest off-origin peak in the Patterson function is 5.46% of the height of the origin peak. No significant pseudotranslation is detected.*

<sup>1</sup>Intensities estimated from amplitudes.

<sup>2</sup>Theoretical values of  $\langle |L| \rangle$ ,  $\langle L^2 \rangle$  for acentric reflections are 0.5, 0.333 respectively for untwinned datasets, and 0.375, 0.2 for perfectly twinned datasets.

## 5 Model quality [i](#)

### 5.1 Standard geometry [i](#)

Bond lengths and bond angles in the following residue types are not validated in this section: SO4, FAD, BTB

The Z score for a bond length (or angle) is the number of standard deviations the observed value is removed from the expected value. A bond length (or angle) with  $|Z| > 5$  is considered an outlier worth inspection. RMSZ is the root-mean-square of all Z scores of the bond lengths (or angles).

Mol	Chain	Bond lengths		Bond angles	
		RMSZ	# Z  >5	RMSZ	# Z  >5
1	A	0.42	0/3663	0.54	0/4942
1	B	0.41	0/3694	0.52	1/4987 (0.0%)
All	All	0.42	0/7357	0.53	1/9929 (0.0%)

There are no bond length outliers.

All (1) bond angle outliers are listed below:

Mol	Chain	Res	Type	Atoms	Z	Observed(°)	Ideal(°)
1	B	297	ASP	CB-CG-OD1	5.40	123.16	118.30

There are no chirality outliers.

There are no planarity outliers.

### 5.2 Too-close contacts [i](#)

In the following table, the Non-H and H(model) columns list the number of non-hydrogen atoms and hydrogen atoms in the chain respectively. The H(added) column lists the number of hydrogen atoms added and optimized by MolProbity. The Clashes column lists the number of clashes within the asymmetric unit, whereas Symm-Clashes lists symmetry related clashes.

Mol	Chain	Non-H	H(model)	H(added)	Clashes	Symm-Clashes
1	A	3571	3648	3654	8	0
1	B	3612	3679	3684	6	0
2	A	53	31	29	0	0
2	B	53	31	29	0	0
3	A	14	19	19	0	0
3	B	14	19	19	0	0
4	A	30	0	0	0	0
4	B	20	0	0	0	0

*Continued on next page...*

Continued from previous page...

Mol	Chain	Non-H	H(model)	H(added)	Clashes	Symm-Clashes
5	A	288	0	0	2	0
5	B	249	0	0	2	0
All	All	7904	7427	7434	12	0

The all-atom clashscore is defined as the number of clashes found per 1000 atoms (including hydrogen atoms). The all-atom clashscore for this structure is 1.

All (12) close contacts within the same asymmetric unit are listed below, sorted by their clash magnitude.

Atom-1	Atom-2	Interatomic distance (Å)	Clash overlap (Å)
1:A:203:ASP:OD1	1:A:236:LYS:NZ	2.28	0.62
1:A:460[A]:ARG:NH1	5:A:604:HOH:O	2.31	0.56
1:B:232:LYS:NZ	5:B:603:HOH:O	2.38	0.56
1:A:78:MET:SD	1:B:78:MET:SD	3.09	0.50
1:A:375:LYS:NZ	5:A:609:HOH:O	2.44	0.50
1:A:79:SER:OG	1:B:79:SER:OG	2.30	0.48
1:A:3:GLN:N	1:A:4:PRO:HD2	2.31	0.46
1:B:380:GLU:HB3	1:B:410:LYS:HE2	1.98	0.46
1:A:45[B]:CYS:HG	1:A:50[B]:CYS:HG	1.65	0.42
1:A:409:GLN:HB3	1:A:416:LEU:HD11	2.01	0.42
1:B:20:VAL:HG11	1:B:332[B]:GLU:HG3	2.01	0.41
1:B:437:GLU:OE1	5:B:601:HOH:O	2.22	0.40

There are no symmetry-related clashes.

## 5.3 Torsion angles [i](#)

### 5.3.1 Protein backbone [i](#)

In the following table, the Percentiles column shows the percent Ramachandran outliers of the chain as a percentile score with respect to all X-ray entries followed by that with respect to entries of similar resolution.

The Analysed column shows the number of residues for which the backbone conformation was analysed, and the total number of residues.

Mol	Chain	Analysed	Favoured	Allowed	Outliers	Percentiles	
1	A	482/496 (97%)	474 (98%)	8 (2%)	0	100	100
1	B	487/496 (98%)	478 (98%)	9 (2%)	0	100	100
All	All	969/992 (98%)	952 (98%)	17 (2%)	0	100	100

There are no Ramachandran outliers to report.

### 5.3.2 Protein sidechains [i](#)

In the following table, the Percentiles column shows the percent sidechain outliers of the chain as a percentile score with respect to all X-ray entries followed by that with respect to entries of similar resolution.

The Analysed column shows the number of residues for which the sidechain conformation was analysed, and the total number of residues.

Mol	Chain	Analysed	Rotameric	Outliers	Percentiles	
1	A	384/390 (98%)	378 (98%)	6 (2%)	62	45
1	B	386/390 (99%)	381 (99%)	5 (1%)	69	54
All	All	770/780 (99%)	759 (99%)	11 (1%)	65	52

All (11) residues with a non-rotameric sidechain are listed below:

Mol	Chain	Res	Type
1	A	19	TYR
1	A	31	LYS
1	A	46	LEU
1	A	54	LYS
1	A	235	PHE
1	A	438	TYR
1	B	19	TYR
1	B	46	LEU
1	B	54	LYS
1	B	87	LYS
1	B	235	PHE

Some sidechains can be flipped to improve hydrogen bonding and reduce clashes. There are no such sidechains identified.

### 5.3.3 RNA [i](#)

There are no RNA molecules in this entry.

## 5.4 Non-standard residues in protein, DNA, RNA chains [i](#)

There are no non-standard protein/DNA/RNA residues in this entry.

## 5.5 Carbohydrates [i](#)

There are no carbohydrates in this entry.

## 5.6 Ligand geometry [i](#)

14 ligands are modelled in this entry.

In the following table, the Counts columns list the number of bonds (or angles) for which Mogul statistics could be retrieved, the number of bonds (or angles) that are observed in the model and the number of bonds (or angles) that are defined in the Chemical Component Dictionary. The Link column lists molecule types, if any, to which the group is linked. The Z score for a bond length (or angle) is the number of standard deviations the observed value is removed from the expected value. A bond length (or angle) with  $|Z| > 2$  is considered an outlier worth inspection. RMSZ is the root-mean-square of all Z scores of the bond lengths (or angles).

Mol	Type	Chain	Res	Link	Bond lengths			Bond angles		
					Counts	RMSZ	# Z  > 2	Counts	RMSZ	# Z  > 2
2	FAD	A	501	-	51,58,58	4.20	20 (39%)	60,89,89	2.62	13 (21%)
4	SO4	A	505	-	4,4,4	0.79	0	6,6,6	0.54	0
4	SO4	B	503	-	4,4,4	0.82	0	6,6,6	0.75	0
4	SO4	B	504	-	4,4,4	0.77	0	6,6,6	0.65	0
4	SO4	B	506	-	4,4,4	0.78	0	6,6,6	0.50	0
4	SO4	A	504	-	4,4,4	0.78	0	6,6,6	0.70	0
4	SO4	A	503	-	4,4,4	0.82	0	6,6,6	0.56	0
4	SO4	A	508	-	4,4,4	0.80	0	6,6,6	0.65	0
4	SO4	A	507	-	4,4,4	0.80	0	6,6,6	0.55	0
3	BTB	A	502	-	13,13,13	0.57	0	7,16,16	0.41	0
4	SO4	A	506	-	4,4,4	0.78	0	6,6,6	0.51	0
3	BTB	B	502	-	13,13,13	0.69	0	7,16,16	0.39	0
2	FAD	B	501	-	51,58,58	4.16	20 (39%)	60,89,89	2.56	14 (23%)
4	SO4	B	505	-	4,4,4	0.77	0	6,6,6	0.62	0

In the following table, the Chirals column lists the number of chiral outliers, the number of chiral centers analysed, the number of these observed in the model and the number defined in the Chemical Component Dictionary. Similar counts are reported in the Torsion and Rings columns. '-' means no outliers of that kind were identified.

Mol	Type	Chain	Res	Link	Chirals	Torsions	Rings
3	BTB	B	502	-	-	6/21/21/21	-
2	FAD	A	501	-	-	2/30/50/50	0/6/6/6
2	FAD	B	501	-	-	2/30/50/50	0/6/6/6
3	BTB	A	502	-	-	0/21/21/21	-

All (40) bond length outliers are listed below:

Mol	Chain	Res	Type	Atoms	Z	Observed(Å)	Ideal(Å)
2	A	501	FAD	C2B-C1B	-16.76	1.28	1.53
2	B	501	FAD	C2B-C1B	-16.76	1.28	1.53
2	A	501	FAD	O4B-C1B	15.02	1.62	1.41
2	B	501	FAD	O4B-C1B	14.67	1.61	1.41
2	B	501	FAD	C5X-N5	7.20	1.47	1.35
2	A	501	FAD	C5X-N5	7.18	1.47	1.35
2	A	501	FAD	C10-N1	6.43	1.41	1.33
2	B	501	FAD	C10-N1	5.92	1.40	1.33
2	A	501	FAD	C4X-C10	5.66	1.44	1.38
2	A	501	FAD	C4X-N5	5.65	1.41	1.33
2	B	501	FAD	C4X-N5	5.54	1.41	1.33
2	A	501	FAD	O4B-C4B	-5.49	1.32	1.45
2	A	501	FAD	C9A-N10	5.36	1.45	1.38
2	B	501	FAD	C4X-C10	5.33	1.44	1.38
2	B	501	FAD	C4-C4X	5.08	1.50	1.41
2	B	501	FAD	C4-N3	5.04	1.41	1.33
2	B	501	FAD	O4B-C4B	-4.90	1.34	1.45
2	B	501	FAD	C2-N1	4.80	1.47	1.38
2	A	501	FAD	C4-N3	4.71	1.41	1.33
2	A	501	FAD	C2-N1	4.59	1.47	1.38
2	B	501	FAD	C2-N3	4.49	1.47	1.38
2	B	501	FAD	C2A-N3A	4.43	1.39	1.32
2	B	501	FAD	C9A-N10	4.40	1.44	1.38
2	A	501	FAD	C2A-N3A	4.35	1.39	1.32
2	A	501	FAD	C2-N3	4.21	1.46	1.38
2	A	501	FAD	C4-C4X	4.10	1.48	1.41
2	A	501	FAD	C1'-N10	3.59	1.51	1.48
2	B	501	FAD	C1'-N10	3.51	1.51	1.48
2	B	501	FAD	O3B-C3B	-3.06	1.35	1.43
2	A	501	FAD	O3B-C3B	-3.03	1.35	1.43
2	B	501	FAD	C6A-N6A	2.78	1.44	1.34
2	B	501	FAD	C2A-N1A	2.76	1.39	1.33
2	A	501	FAD	C2A-N1A	2.74	1.39	1.33
2	A	501	FAD	C6A-N6A	2.70	1.43	1.34
2	B	501	FAD	O2'-C2'	-2.68	1.37	1.43
2	A	501	FAD	C5A-C4A	-2.50	1.34	1.40
2	B	501	FAD	C5A-C4A	-2.47	1.34	1.40
2	A	501	FAD	O2B-C2B	2.23	1.48	1.43
2	A	501	FAD	C4A-N3A	2.21	1.38	1.35
2	B	501	FAD	C2B-C3B	2.11	1.59	1.53

All (27) bond angle outliers are listed below:

Mol	Chain	Res	Type	Atoms	Z	Observed(°)	Ideal(°)
2	A	501	FAD	C4-N3-C2	9.25	122.95	115.14
2	B	501	FAD	C4-N3-C2	8.55	122.36	115.14
2	A	501	FAD	C5X-C9A-N10	7.88	123.42	117.72
2	B	501	FAD	C1'-N10-C9A	7.71	124.36	118.29
2	A	501	FAD	C1'-N10-C9A	7.38	124.10	118.29
2	B	501	FAD	C5X-C9A-N10	6.86	122.69	117.72
2	B	501	FAD	N3A-C2A-N1A	-5.76	119.67	128.68
2	A	501	FAD	C5A-C6A-N6A	5.50	128.71	120.35
2	B	501	FAD	C5A-C6A-N6A	5.38	128.53	120.35
2	B	501	FAD	C7M-C7-C8	5.37	131.74	120.74
2	A	501	FAD	C7M-C7-C8	5.34	131.67	120.74
2	A	501	FAD	N3A-C2A-N1A	-5.23	120.50	128.68
2	B	501	FAD	C7M-C7-C6	-4.68	109.14	120.34
2	A	501	FAD	C7M-C7-C6	-4.19	110.31	120.34
2	A	501	FAD	C4X-C4-N3	-4.10	117.83	123.43
2	B	501	FAD	C4X-C4-N3	-4.05	117.89	123.43
2	A	501	FAD	N6A-C6A-N1A	-3.87	110.55	118.57
2	B	501	FAD	N6A-C6A-N1A	-3.71	110.86	118.57
2	A	501	FAD	C9A-N10-C10	-3.43	117.42	121.91
2	B	501	FAD	C9A-N10-C10	-3.23	117.67	121.91
2	B	501	FAD	O4B-C1B-C2B	-3.13	102.36	106.93
2	A	501	FAD	C10-C4X-N5	3.06	123.38	121.26
2	A	501	FAD	O4B-C1B-C2B	-2.75	102.91	106.93
2	B	501	FAD	C3B-C2B-C1B	2.75	105.11	100.98
2	A	501	FAD	C9A-C5X-N5	-2.47	118.49	122.36
2	B	501	FAD	C9A-C5X-N5	-2.25	118.84	122.36
2	B	501	FAD	C8M-C8-C7	-2.02	116.59	120.74

There are no chirality outliers.

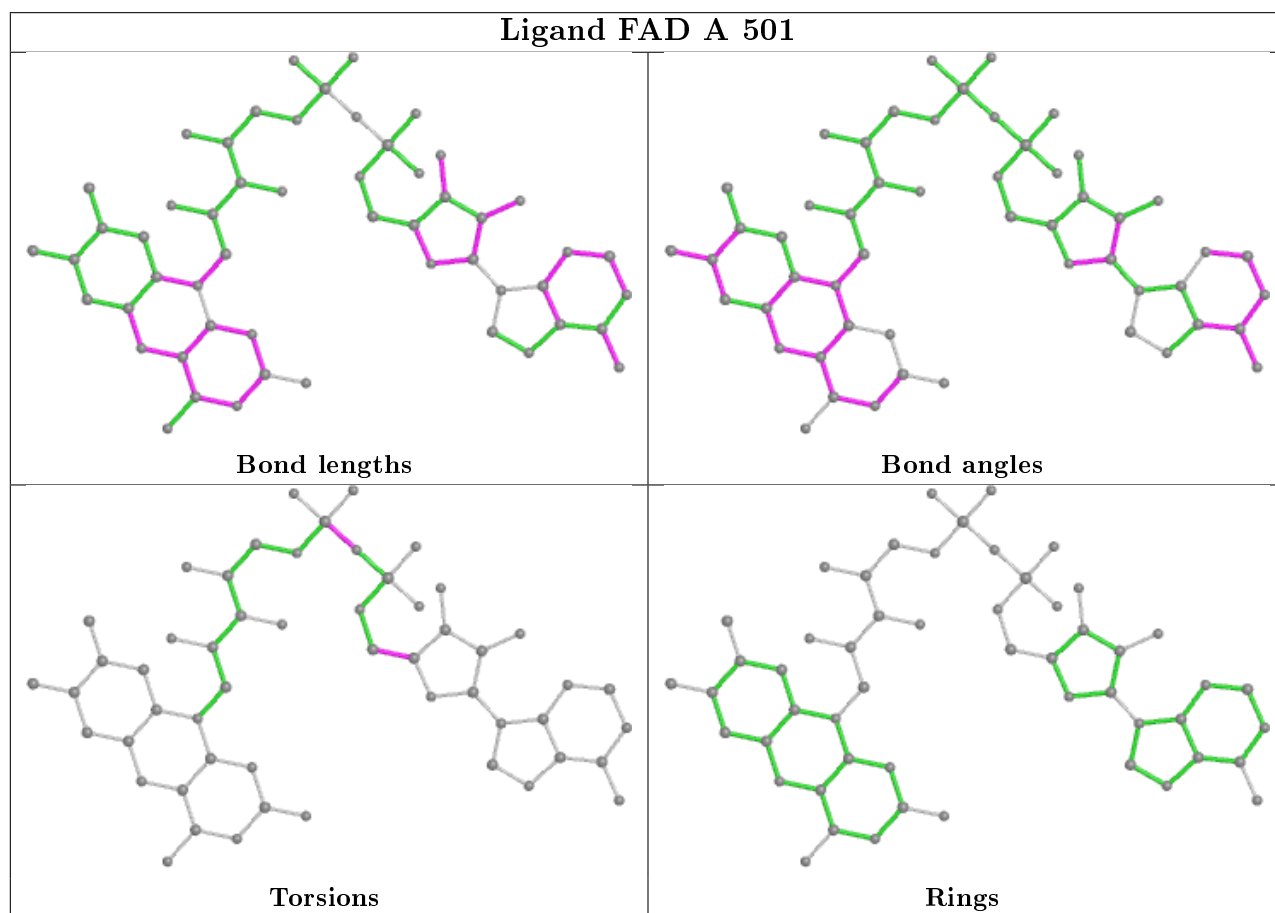
All (10) torsion outliers are listed below:

Mol	Chain	Res	Type	Atoms
2	A	501	FAD	PA-O3P-P-O5'
3	B	502	BTB	C1-C2-C4-O4
3	B	502	BTB	C3-C2-C4-O4
3	B	502	BTB	N-C2-C4-O4
3	B	502	BTB	C1-C2-N-C7
3	B	502	BTB	C3-C2-N-C7
3	B	502	BTB	C4-C2-N-C7
2	B	501	FAD	O4B-C4B-C5B-O5B
2	A	501	FAD	O4B-C4B-C5B-O5B
2	B	501	FAD	C3B-C4B-C5B-O5B

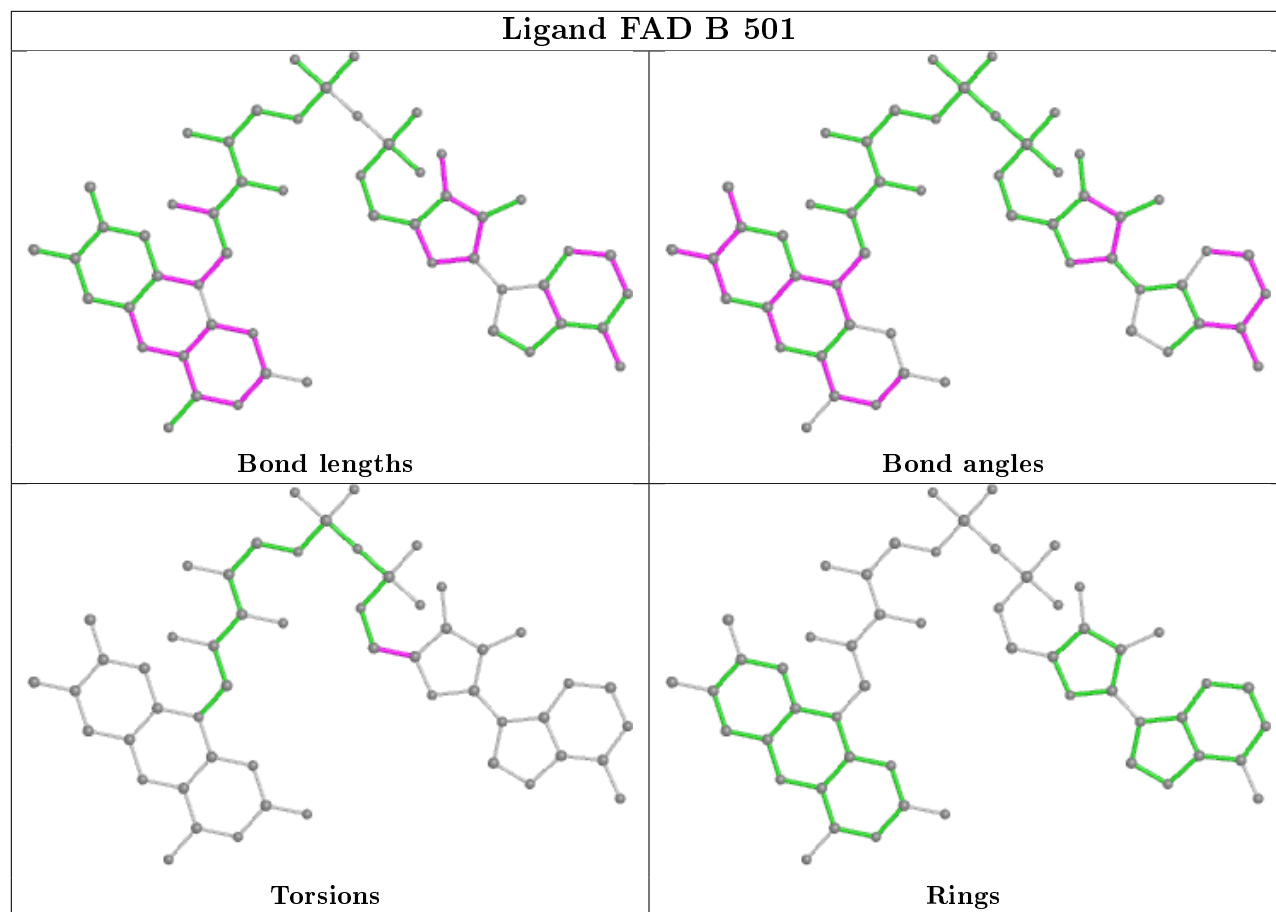
There are no ring outliers.

No monomer is involved in short contacts.

The following is a two-dimensional graphical depiction of Mogul quality analysis of bond lengths, bond angles, torsion angles, and ring geometry for all instances of the Ligand of Interest. In addition, ligands with molecular weight > 250 and outliers as shown on the validation Tables will also be included. For torsion angles, if less than 5% of the Mogul distribution of torsion angles is within 10 degrees of the torsion angle in question, then that torsion angle is considered an outlier. Any bond that is central to one or more torsion angles identified as an outlier by Mogul will be highlighted in the graph. For rings, the root-mean-square deviation (RMSD) between the ring in question and similar rings identified by Mogul is calculated over all ring torsion angles. If the average RMSD is greater than 60 degrees and the minimal RMSD between the ring in question and any Mogul-identified rings is also greater than 60 degrees, then that ring is considered an outlier. The outliers are highlighted in purple. The color gray indicates Mogul did not find sufficient equivalents in the CSD to analyse the geometry.







## 5.7 Other polymers [i](#)

There are no such residues in this entry.

## 5.8 Polymer linkage issues [i](#)

There are no chain breaks in this entry.

## 6 Fit of model and data [i](#)

### 6.1 Protein, DNA and RNA chains [i](#)

In the following table, the column labelled ‘#RSRZ> 2’ contains the number (and percentage) of RSRZ outliers, followed by percent RSRZ outliers for the chain as percentile scores relative to all X-ray entries and entries of similar resolution. The OWAB column contains the minimum, median, 95<sup>th</sup> percentile and maximum values of the occupancy-weighted average B-factor per residue. The column labelled ‘Q< 0.9’ lists the number of (and percentage) of residues with an average occupancy less than 0.9.

Mol	Chain	Analysed	<RSRZ>	#RSRZ>2	OWAB(Å <sup>2</sup> )	Q<0.9
1	A	472/496 (95%)	0.56	47 (9%) <b>7</b> <b>9</b>	28, 44, 73, 120	0
1	B	481/496 (96%)	0.60	56 (11%) <b>4</b> <b>6</b>	30, 48, 75, 104	0
All	All	953/992 (96%)	0.58	103 (10%) <b>5</b> <b>8</b>	28, 46, 74, 120	0

All (103) RSRZ outliers are listed below:

Mol	Chain	Res	Type	RSRZ
1	A	261	ALA	6.2
1	B	81	VAL	5.4
1	B	379	ILE	4.6
1	B	82	ARG	4.2
1	B	449	CYS	4.2
1	B	265	LYS	4.0
1	B	451	ALA	4.0
1	A	82	ARG	3.8
1	B	79	SER	3.8
1	A	455	LEU	3.8
1	A	468	PHE	3.7
1	A	428	MET	3.6
1	A	353	CYS	3.5
1	A	454	THR	3.5
1	A	411	SER	3.5
1	A	355	PRO	3.4
1	B	434	LEU	3.3
1	B	78	MET	3.3
1	B	328	ALA	3.3
1	A	250	SER	3.3
1	A	79	SER	3.2
1	A	432	ALA	3.2
1	B	80	GLU	3.2
1	A	451	ALA	3.2

*Continued on next page...*

*Continued from previous page...*

<b>Mol</b>	<b>Chain</b>	<b>Res</b>	<b>Type</b>	<b>RSRZ</b>
1	A	448	VAL	3.2
1	B	455	LEU	3.2
1	B	5	ILE	3.1
1	B	429	VAL	3.1
1	A	412	THR	3.0
1	A	262	SER	3.0
1	A	436	LEU	3.0
1	B	348[A]	HIS	3.0
1	A	357	VAL	3.0
1	A	265	LYS	3.0
1	A	426	GLY	2.9
1	B	69	LYS	2.9
1	A	449	CYS	2.9
1	B	378	GLY	2.8
1	B	448	VAL	2.8
1	B	311	LYS	2.8
1	B	-6	VAL	2.8
1	B	-5	LEU	2.8
1	A	228	ARG	2.7
1	B	351	TYR	2.7
1	A	422	GLY	2.7
1	A	433	ALA	2.7
1	A	209	PHE	2.7
1	B	269	ILE	2.7
1	A	434	LEU	2.7
1	B	260	ALA	2.6
1	B	45[A]	CYS	2.6
1	A	424	GLY	2.6
1	B	266	ALA	2.6
1	A	78	MET	2.6
1	B	-4	PHE	2.6
1	A	254	ILE	2.6
1	B	-2	GLY	2.6
1	B	428	MET	2.6
1	B	438	TYR	2.6
1	B	452	HIS	2.5
1	B	454	THR	2.5
1	B	210	LEU	2.5
1	B	426	GLY	2.4
1	A	425	ALA	2.4
1	A	456	SER	2.4
1	A	429	VAL	2.4

*Continued on next page...*

*Continued from previous page...*

Mol	Chain	Res	Type	RSRZ
1	B	411	SER	2.4
1	B	261	ALA	2.4
1	B	353	CYS	2.3
1	B	394	ALA	2.3
1	B	291	GLU	2.3
1	B	216	VAL	2.3
1	A	459	PHE	2.3
1	B	331	ALA	2.3
1	B	6	ASP	2.3
1	A	450	HIS	2.2
1	A	439	GLY	2.2
1	A	359	TYR	2.2
1	A	327	LEU	2.2
1	B	295	GLU	2.2
1	A	242	LYS	2.2
1	B	359	TYR	2.2
1	B	50[A]	CYS	2.2
1	B	241	THR	2.2
1	B	427	GLU	2.1
1	A	251	ASP	2.1
1	A	414[A]	ARG	2.1
1	B	262	SER	2.1
1	B	450	HIS	2.1
1	A	175	LYS	2.1
1	A	453	PRO	2.1
1	A	81	VAL	2.1
1	A	458	ALA	2.1
1	B	432	ALA	2.1
1	B	376	GLU	2.1
1	B	228	ARG	2.1
1	A	365	ALA	2.1
1	A	354	VAL	2.1
1	B	433	ALA	2.1
1	B	453	PRO	2.0
1	B	397[A]	ASN	2.0
1	B	456	SER	2.0
1	A	264	GLY	2.0

## 6.2 Non-standard residues in protein, DNA, RNA chains

There are no non-standard protein/DNA/RNA residues in this entry.

### 6.3 Carbohydrates [i](#)

There are no carbohydrates in this entry.

### 6.4 Ligands [i](#)

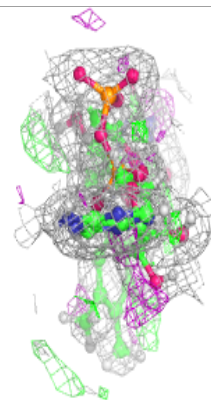
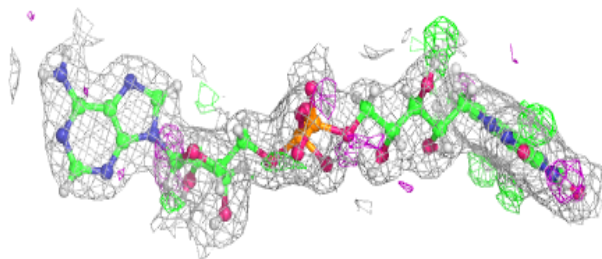
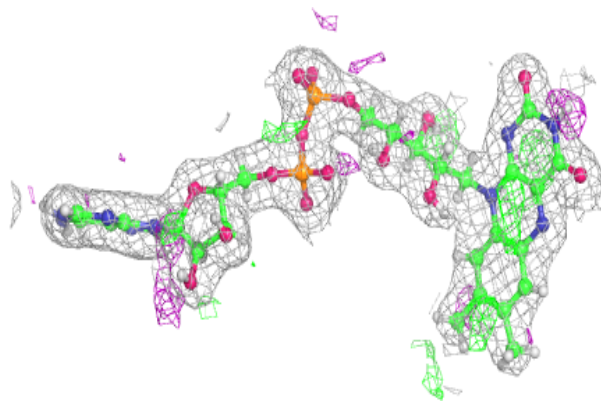
In the following table, the Atoms column lists the number of modelled atoms in the group and the number defined in the chemical component dictionary. The B-factors column lists the minimum, median, 95<sup>th</sup> percentile and maximum values of B factors of atoms in the group. The column labelled 'Q< 0.9' lists the number of atoms with occupancy less than 0.9.

Mol	Type	Chain	Res	Atoms	RSCC	RSR	B-factors(Å <sup>2</sup> )	Q<0.9
3	BTB	A	502	14/14	0.36	0.37	158,192,245,255	0
3	BTB	B	502	14/14	0.47	0.41	107,143,172,176	0
4	SO4	A	507	5/5	0.73	0.31	80,81,81,83	5
4	SO4	A	506	5/5	0.89	0.26	81,82,83,83	5
4	SO4	A	508	5/5	0.91	0.16	54,55,55,56	5
4	SO4	A	505	5/5	0.92	0.13	80,82,82,83	5
4	SO4	B	505	5/5	0.94	0.17	70,72,72,72	5
2	FAD	A	501	53/53	0.95	0.12	24,32,40,43	0
4	SO4	B	504	5/5	0.95	0.10	86,86,87,89	0
2	FAD	B	501	53/53	0.95	0.11	26,34,43,45	0
4	SO4	B	506	5/5	0.95	0.21	63,64,64,64	5
4	SO4	A	504	5/5	0.96	0.12	72,73,74,75	0
4	SO4	A	503	5/5	0.97	0.07	60,61,62,62	0
4	SO4	B	503	5/5	0.97	0.07	76,77,78,78	0

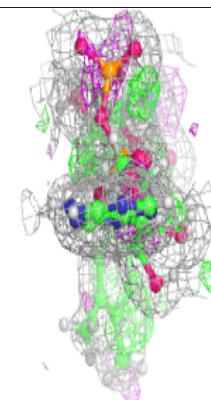
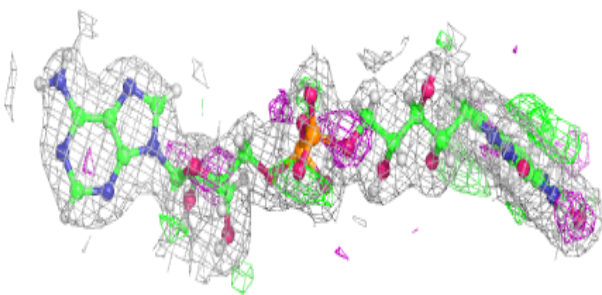
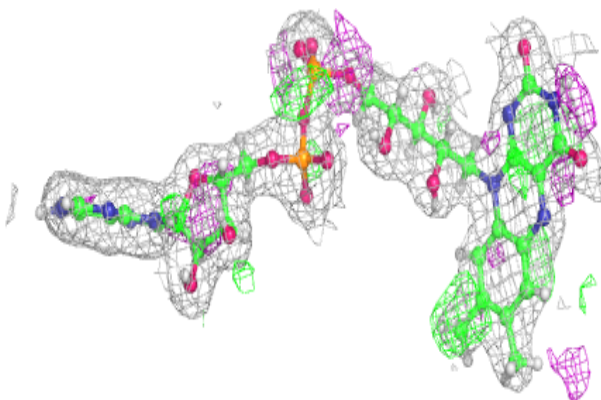
The following is a graphical depiction of the model fit to experimental electron density of all instances of the Ligand of Interest. In addition, ligands with molecular weight > 250 and outliers as shown on the geometry validation Tables will also be included. Each fit is shown from different orientation to approximate a three-dimensional view.

**Electron density around FAD A 501:**

$2mF_o-DF_c$  (at 0.7 rmsd) in gray  
 $mF_o-DF_c$  (at 3 rmsd) in purple (negative)  
and green (positive)

**Electron density around FAD B 501:**

$2mF_o-DF_c$  (at 0.7 rmsd) in gray  
 $mF_o-DF_c$  (at 3 rmsd) in purple (negative)  
and green (positive)



## 6.5 Other polymers

There are no such residues in this entry.