



Full wwPDB X-ray Structure Validation Report ⓘ

Sep 20, 2023 – 01:22 AM EDT

PDB ID : 5I6U
Title : The crystal structure of PI3Kdelta with compound 32
Authors : Somoza, J.R.; Villasenor, A.G.
Deposited on : 2016-02-16
Resolution : 2.84 Å(reported)

This is a Full wwPDB X-ray Structure Validation Report for a publicly released PDB entry.

We welcome your comments at validation@mail.wwpdb.org

A user guide is available at

<https://www.wwpdb.org/validation/2017/XrayValidationReportHelp>

with specific help available everywhere you see the ⓘ symbol.

The types of validation reports are described at

<http://www.wwpdb.org/validation/2017/FAQs#types>.

The following versions of software and data (see [references ⓘ](#)) were used in the production of this report:

MolProbity : 4.02b-467
Mogul : 1.8.5 (274361), CSD as541be (2020)
Xtriage (Phenix) : 1.13
EDS : 2.35.1
buster-report : 1.1.7 (2018)
Percentile statistics : 20191225.v01 (using entries in the PDB archive December 25th 2019)
Refmac : 5.8.0158
CCP4 : 7.0.044 (Gargrove)
Ideal geometry (proteins) : Engh & Huber (2001)
Ideal geometry (DNA, RNA) : Parkinson et al. (1996)
Validation Pipeline (wwPDB-VP) : 2.35.1

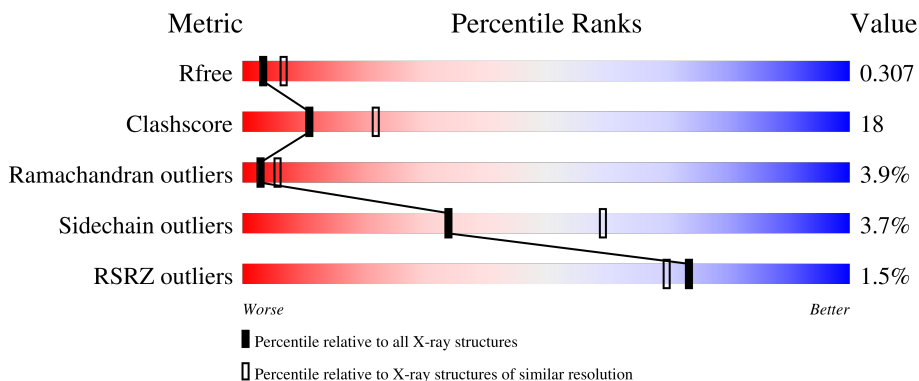
1 Overall quality at a glance

The following experimental techniques were used to determine the structure:

X-RAY DIFFRACTION

The reported resolution of this entry is 2.84 Å.

Percentile scores (ranging between 0-100) for global validation metrics of the entry are shown in the following graphic. The table shows the number of entries on which the scores are based.



Metric	Whole archive (#Entries)	Similar resolution (#Entries, resolution range(Å))
R_{free}	130704	1031 (2.86-2.82)
Clashscore	141614	1078 (2.86-2.82)
Ramachandran outliers	138981	1050 (2.86-2.82)
Sidechain outliers	138945	1051 (2.86-2.82)
RSRZ outliers	127900	1019 (2.86-2.82)

The table below summarises the geometric issues observed across the polymeric chains and their fit to the electron density. The red, orange, yellow and green segments of the lower bar indicate the fraction of residues that contain outliers for ≥ 3 , 2, 1 and 0 types of geometric quality criteria respectively. A grey segment represents the fraction of residues that are not modelled. The numeric value for each fraction is indicated below the corresponding segment, with a dot representing fractions $\leq 5\%$. The upper red bar (where present) indicates the fraction of residues that have poor fit to the electron density. The numeric value is given above the bar.

Mol	Chain	Length	Quality of chain
1	A	939	

2 Entry composition [i](#)

There are 2 unique types of molecules in this entry. The entry contains 6622 atoms, of which 0 are hydrogens and 0 are deuteriums.

In the tables below, the ZeroOcc column contains the number of atoms modelled with zero occupancy, the AltConf column contains the number of residues with at least one atom in alternate conformation and the Trace column contains the number of residues modelled with at most 2 atoms.

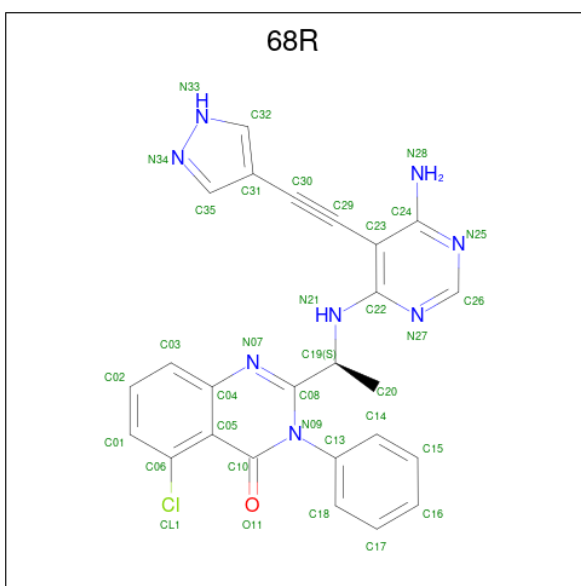
- Molecule 1 is a protein called Phosphatidylinositol 4,5-bisphosphate 3-kinase catalytic subunit delta isoform.

Mol	Chain	Residues	Atoms					ZeroOcc	AltConf	Trace
			Total	C	N	O	S			
1	A	816	6587	4224	1118	1191	54	0	0	0

There is a discrepancy between the modelled and reference sequences:

Chain	Residue	Modelled	Actual	Comment	Reference
A	508	GLN	-	insertion	UNP O35904

- Molecule 2 is 2-[(1S)-1-({6-amino-5-[(1H-pyrazol-4-yl)ethynyl]pyrimidin-4-yl}amino)ethyl]-5-chloro-3-phenylquinazolin-4(3H)-one (three-letter code: 68R) (formula: C₂₅H₁₉ClN₈O).



Mol	Chain	Residues	Atoms					ZeroOcc	AltConf
			Total	C	Cl	N	O		
2	A	1	35	25	1	8	1	0	0

G971	M981	R982	A983	E988	S992	Q996	Y997	D1000	L1004	E1010	K1013	H1014	V1017	K1018	F1019	H1020	E1021	R1024	E1025	S1026	TRP	LYS	THR	LYS	LYS	VAL	ASN	TRP	LEU	ALA	HIS	ASN	ASN	VAL	SER	LYS	ASP	ASN	ARG	GLN
------	------	------	------	------	------	------	------	-------	-------	-------	-------	-------	-------	-------	-------	-------	-------	-------	-------	-------	-----	-----	-----	-----	-----	-----	-----	-----	-----	-----	-----	-----	-----	-----	-----	-----	-----	-----	-----	-----

4 Data and refinement statistics

Property	Value	Source
Space group	C 1 2 1	Depositor
Cell constants a, b, c, α , β , γ	142.84Å 64.93Å 117.06Å 90.00° 103.17° 90.00°	Depositor
Resolution (Å)	29.66 – 2.84 29.66 – 2.84	Depositor EDS
% Data completeness (in resolution range)	96.9 (29.66-2.84) 90.0 (29.66-2.84)	Depositor EDS
R_{merge}	0.13	Depositor
R_{sym}	(Not available)	Depositor
$\langle I/\sigma(I) \rangle$ ¹	1.38 (at 2.85Å)	Xtrriage
Refinement program	PHENIX 1.9_1692	Depositor
R, R_{free}	0.212 , 0.307 0.217 , 0.307	Depositor DCC
R_{free} test set	1999 reflections (8.28%)	wwPDB-VP
Wilson B-factor (Å ²)	50.5	Xtrriage
Anisotropy	0.206	Xtrriage
Bulk solvent k_{sol} (e/Å ³), B_{sol} (Å ²)	0.27 , 37.5	EDS
L-test for twinning ²	$\langle L \rangle = 0.45$, $\langle L^2 \rangle = 0.28$	Xtrriage
Estimated twinning fraction	No twinning to report.	Xtrriage
F_o, F_c correlation	0.90	EDS
Total number of atoms	6622	wwPDB-VP
Average B, all atoms (Å ²)	53.0	wwPDB-VP

Xtrriage's analysis on translational NCS is as follows: *The largest off-origin peak in the Patterson function is 9.05% of the height of the origin peak. No significant pseudotranslation is detected.*

¹Intensities estimated from amplitudes.

²Theoretical values of $\langle |L| \rangle$, $\langle L^2 \rangle$ for acentric reflections are 0.5, 0.333 respectively for untwinned datasets, and 0.375, 0.2 for perfectly twinned datasets.

5 Model quality [i](#)

5.1 Standard geometry [i](#)

Bond lengths and bond angles in the following residue types are not validated in this section: 68R

The Z score for a bond length (or angle) is the number of standard deviations the observed value is removed from the expected value. A bond length (or angle) with $|Z| > 5$ is considered an outlier worth inspection. RMSZ is the root-mean-square of all Z scores of the bond lengths (or angles).

Mol	Chain	Bond lengths		Bond angles	
		RMSZ	# $ Z > 5$	RMSZ	# $ Z > 5$
1	A	0.68	0/6727	0.83	6/9071 (0.1%)

Chiral center outliers are detected by calculating the chiral volume of a chiral center and verifying if the center is modelled as a planar moiety or with the opposite hand. A planarity outlier is detected by checking planarity of atoms in a peptide group, atoms in a mainchain group or atoms of a sidechain that are expected to be planar.

Mol	Chain	#Chirality outliers	#Planarity outliers
1	A	0	8

There are no bond length outliers.

All (6) bond angle outliers are listed below:

Mol	Chain	Res	Type	Atoms	Z	Observed($^{\circ}$)	Ideal($^{\circ}$)
1	A	488	LEU	CB-CG-CD2	-7.26	98.66	111.00
1	A	488	LEU	CA-CB-CG	-7.04	99.11	115.30
1	A	190	LEU	CA-CB-CG	6.95	131.27	115.30
1	A	515	LEU	CA-CB-CG	6.66	130.61	115.30
1	A	266	LEU	CA-CB-CG	6.18	129.52	115.30
1	A	488	LEU	N-CA-C	5.18	124.98	111.00

There are no chirality outliers.

All (8) planarity outliers are listed below:

Mol	Chain	Res	Type	Group
1	A	444	SER	Peptide
1	A	490	LYS	Peptide
1	A	514	ILE	Peptide
1	A	516	GLU	Peptide

Continued on next page...

Continued from previous page...

Mol	Chain	Res	Type	Group
1	A	523	LEU	Peptide
1	A	525	GLU	Peptide
1	A	537	GLU	Peptide
1	A	914	HIS	Peptide

5.2 Too-close contacts [i](#)

In the following table, the Non-H and H(model) columns list the number of non-hydrogen atoms and hydrogen atoms in the chain respectively. The H(added) column lists the number of hydrogen atoms added and optimized by MolProbity. The Clashes column lists the number of clashes within the asymmetric unit, whereas Symm-Clashes lists symmetry-related clashes.

Mol	Chain	Non-H	H(model)	H(added)	Clashes	Symm-Clashes
1	A	6587	0	6572	239	0
2	A	35	0	0	4	0
All	All	6622	0	6572	239	0

The all-atom clashscore is defined as the number of clashes found per 1000 atoms (including hydrogen atoms). The all-atom clashscore for this structure is 18.

All (239) close contacts within the same asymmetric unit are listed below, sorted by their clash magnitude.

Atom-1	Atom-2	Interatomic distance (Å)	Clash overlap (Å)
1:A:525:GLU:HB3	1:A:528:LYS:HB3	1.38	1.02
1:A:355:CYS:SG	1:A:356:LYS:N	2.47	0.84
1:A:241:LEU:HD13	1:A:274:LEU:HD13	1.58	0.83
1:A:957:ARG:NH1	1:A:1020:ASN:OD1	2.12	0.83
1:A:383:ASP:OD1	1:A:558:HIS:ND1	2.13	0.82
1:A:982:ARG:HH12	1:A:992:SER:HA	1.47	0.80
1:A:547:ALA:HA	1:A:550:LEU:HD12	1.65	0.78
1:A:245:GLY:HA3	1:A:768:ALA:HB2	1.65	0.78
1:A:887:TYR:OH	1:A:929:ARG:NH2	2.17	0.77
1:A:216:LEU:HD22	1:A:241:LEU:HD11	1.67	0.77
1:A:267:HIS:CD2	1:A:809:ARG:NH1	2.53	0.76
1:A:192:VAL:HG12	1:A:272:PRO:HB2	1.68	0.76
1:A:517:ARG:NH1	1:A:544:GLU:OE1	2.18	0.74
1:A:904:SER:OG	1:A:906:GLN:HG3	1.86	0.74
1:A:533:LYS:HG2	1:A:534:MET:HG3	1.70	0.72
1:A:843:ASN:OD1	1:A:844:MET:N	2.23	0.71
1:A:359:SER:OG	1:A:360:SER:N	2.23	0.71

Continued on next page...

Continued from previous page...

Atom-1	Atom-2	Interatomic distance (Å)	Clash overlap (Å)
1:A:154:ARG:NH2	1:A:674:GLY:O	2.25	0.69
1:A:356:LYS:HD3	1:A:378:ASP:OD2	1.92	0.69
1:A:826:GLU:O	2:A:1101:68R:N28	2.26	0.68
1:A:891:ILE:HG22	1:A:894:ARG:HD3	1.74	0.68
1:A:371:TRP:O	1:A:373:GLN:N	2.27	0.67
1:A:380:SER:HB3	1:A:557:LYS:NZ	2.09	0.67
1:A:696:ASN:HB2	1:A:759:LEU:HD11	1.76	0.67
1:A:155:GLN:NE2	1:A:286:ARG:O	2.26	0.66
1:A:894:ARG:NH2	1:A:910:ILE:O	2.29	0.65
1:A:389:ARG:HB3	1:A:424:MET:HE1	1.77	0.65
1:A:512:ARG:HD3	1:A:530:LEU:HD22	1.78	0.64
1:A:116:GLN:HA	1:A:119:LEU:HD12	1.78	0.64
1:A:765:SER:HB3	1:A:768:ALA:HB3	1.78	0.64
1:A:513:GLU:HA	1:A:515:LEU:HB2	1.80	0.64
1:A:191:LEU:O	1:A:272:PRO:HD2	1.98	0.64
1:A:512:ARG:HH11	1:A:530:LEU:CD2	2.11	0.64
1:A:199:SER:OG	1:A:200:GLU:N	2.28	0.63
1:A:341:LEU:HB2	1:A:363:VAL:HG23	1.79	0.63
1:A:435:GLY:HA2	1:A:475:LEU:O	1.98	0.63
1:A:205:PHE:HZ	1:A:220:ALA:HA	1.62	0.63
1:A:701:VAL:O	1:A:704:GLN:HB2	1.98	0.63
1:A:453:LEU:HD12	1:A:454:ASN:H	1.63	0.63
1:A:614:GLN:HG3	1:A:981:MET:HG2	1.80	0.63
1:A:110:LYS:O	1:A:114:ASN:ND2	2.32	0.63
1:A:355:CYS:HG	1:A:356:LYS:H	1.46	0.62
1:A:917:GLY:HA3	1:A:997:TYR:CE1	2.34	0.62
1:A:982:ARG:NH1	1:A:992:SER:HA	2.14	0.62
1:A:488:LEU:HD21	1:A:491:ILE:HB	1.81	0.62
1:A:936:TYR:HD1	1:A:1026:SER:HB3	1.64	0.61
1:A:532:TRP:HZ3	1:A:564:MET:HE2	1.66	0.61
1:A:138:ASP:OD1	1:A:142:LYS:HB2	2.00	0.61
1:A:652:ARG:O	1:A:652:ARG:NH1	2.31	0.60
1:A:693:LYS:NZ	1:A:697:ASP:OD2	2.34	0.60
1:A:120:LEU:HD13	1:A:683:MET:HG3	1.82	0.60
1:A:435:GLY:O	1:A:475:LEU:N	2.34	0.60
1:A:706:THR:OG1	1:A:707:THR:N	2.34	0.60
1:A:263:CYS:HA	1:A:266:LEU:HG	1.83	0.60
1:A:656:HIS:CD2	1:A:820:ASP:OD2	2.55	0.60
1:A:329:GLU:HG3	1:A:370:VAL:HG22	1.84	0.59
1:A:136:VAL:HG13	1:A:666:LEU:HD11	1.84	0.59
1:A:982:ARG:HH12	1:A:992:SER:CA	2.14	0.59

Continued on next page...

Continued from previous page...

Atom-1	Atom-2	Interatomic distance (Å)	Clash overlap (Å)
1:A:192:VAL:HG23	1:A:205:PHE:HB2	1.84	0.59
1:A:488:LEU:CD2	1:A:491:ILE:HB	2.32	0.59
1:A:355:CYS:C	1:A:356:LYS:HD2	2.24	0.58
1:A:360:SER:OG	1:A:373:GLN:OE1	2.22	0.58
1:A:387:MET:HE3	1:A:590:CYS:H	1.66	0.58
1:A:971:GLY:HA3	1:A:1004:LEU:HD11	1.83	0.58
1:A:875:PHE:CE2	1:A:938:PHE:HB3	2.39	0.58
1:A:356:LYS:N	1:A:356:LYS:HD2	2.19	0.57
1:A:1010:GLU:O	1:A:1013:LYS:HB2	2.04	0.57
1:A:789:LEU:HD22	1:A:981:MET:HE3	1.86	0.57
1:A:154:ARG:HG2	1:A:154:ARG:HH11	1.70	0.57
1:A:267:HIS:CD2	1:A:809:ARG:HH11	2.23	0.57
1:A:157:LEU:O	1:A:286:ARG:NH1	2.38	0.56
1:A:389:ARG:HB3	1:A:424:MET:CE	2.35	0.56
1:A:621:TYR:CZ	1:A:983:ALA:HB2	2.40	0.56
1:A:255:PRO:HG2	1:A:258:HIS:HB2	1.87	0.56
1:A:187:ASN:OD1	1:A:187:ASN:N	2.39	0.55
1:A:431:GLN:HA	1:A:484:TYR:HA	1.88	0.55
1:A:128:PHE:HB2	1:A:140:ARG:NH1	2.22	0.55
1:A:549:LEU:HG	1:A:564:MET:HE3	1.89	0.54
1:A:352:GLU:OE2	1:A:353:MET:HG2	2.08	0.54
1:A:493:GLU:HG2	1:A:494:LEU:N	2.23	0.54
1:A:512:ARG:HG3	1:A:513:GLU:N	2.23	0.53
1:A:693:LYS:HE2	1:A:780:ASN:HD21	1.73	0.53
1:A:380:SER:HB3	1:A:557:LYS:HZ2	1.73	0.53
1:A:383:ASP:CG	1:A:557:LYS:HD2	2.28	0.53
1:A:693:LYS:NZ	1:A:697:ASP:OD1	2.41	0.53
1:A:935:THR:HG22	1:A:937:ASP:H	1.72	0.53
1:A:1017:VAL:O	1:A:1021:GLU:HG3	2.08	0.53
1:A:205:PHE:CZ	1:A:220:ALA:HA	2.43	0.53
1:A:326:GLU:HG2	1:A:327:LEU:O	2.09	0.53
1:A:390:LEU:HD12	1:A:391:CYS:H	1.74	0.53
1:A:424:MET:HG3	1:A:624:TYR:CE1	2.44	0.52
1:A:525:GLU:C	1:A:527:GLU:H	2.13	0.52
1:A:571:TRP:CD1	1:A:572:PRO:HD2	2.44	0.52
1:A:271:THR:O	1:A:273:HIS:ND1	2.42	0.52
1:A:367:SER:OG	1:A:369:PRO:HD3	2.09	0.52
1:A:397:VAL:HG22	1:A:398:VAL:H	1.73	0.52
1:A:693:LYS:NZ	1:A:697:ASP:CG	2.62	0.52
1:A:493:GLU:HG2	1:A:494:LEU:HB3	1.92	0.52
1:A:129:ASP:O	1:A:131:LEU:N	2.42	0.52

Continued on next page...

Continued from previous page...

Atom-1	Atom-2	Interatomic distance (Å)	Clash overlap (Å)
1:A:371:TRP:C	1:A:373:GLN:H	2.12	0.52
1:A:270:LEU:HD12	1:A:271:THR:H	1.75	0.52
1:A:209:THR:HB	1:A:257:CYS:HB3	1.93	0.51
1:A:529:ASP:OD1	1:A:530:LEU:N	2.40	0.51
1:A:609:PHE:CD2	1:A:642:LYS:NZ	2.76	0.51
1:A:387:MET:CE	1:A:590:CYS:H	2.23	0.51
1:A:129:ASP:C	1:A:131:LEU:H	2.14	0.51
1:A:329:GLU:HG2	1:A:330:GLY:H	1.74	0.51
1:A:343:VAL:HG22	1:A:394:LEU:HD12	1.93	0.51
1:A:996:GLN:O	1:A:996:GLN:HG3	2.09	0.51
1:A:242:GLN:HG2	1:A:243:VAL:O	2.11	0.51
1:A:147:CYS:SG	1:A:638:LEU:HD11	2.50	0.50
1:A:530:LEU:HA	1:A:533:LYS:HB3	1.94	0.50
1:A:592:VAL:O	1:A:596:ALA:N	2.36	0.50
1:A:593:GLY:O	1:A:597:ILE:HG12	2.11	0.50
1:A:367:SER:HA	1:A:368:GLU:C	2.32	0.49
1:A:424:MET:O	1:A:433:LYS:HD2	2.11	0.49
1:A:146:PHE:O	1:A:149:GLU:HG2	2.12	0.49
1:A:491:ILE:HG23	1:A:562:ALA:HB1	1.94	0.49
1:A:431:GLN:HG3	1:A:432:LEU:O	2.12	0.49
1:A:394:LEU:O	1:A:418:ILE:HB	2.13	0.49
1:A:239:TYR:CZ	1:A:278:HIS:HD2	2.31	0.49
1:A:114:ASN:HD22	1:A:114:ASN:H	1.60	0.49
1:A:825:ILE:HD13	2:A:1101:68R:C35	2.43	0.49
1:A:243:VAL:HA	1:A:274:LEU:HD23	1.95	0.49
1:A:549:LEU:O	1:A:552:VAL:HG22	2.13	0.49
1:A:944:GLN:OE1	1:A:952:LYS:HE3	2.13	0.49
1:A:420:TRP:CH2	1:A:457:GLY:HA3	2.48	0.48
1:A:453:LEU:HD12	1:A:454:ASN:N	2.29	0.48
1:A:617:GLN:HG3	1:A:981:MET:SD	2.53	0.48
1:A:218:ALA:O	1:A:222:ARG:HG3	2.14	0.48
1:A:617:GLN:HB3	1:A:983:ALA:HB3	1.96	0.48
1:A:936:TYR:CD1	1:A:1026:SER:HB3	2.48	0.48
1:A:419:ALA:HA	1:A:443:PRO:HA	1.95	0.48
1:A:862:LYS:HD2	1:A:903:GLU:HG2	1.95	0.48
1:A:397:VAL:HG22	1:A:398:VAL:HG13	1.95	0.48
1:A:358:VAL:HG21	1:A:377:PHE:CD1	2.49	0.48
1:A:380:SER:HB3	1:A:557:LYS:HZ1	1.78	0.48
1:A:246:ARG:NH1	1:A:248:GLU:OE1	2.47	0.47
1:A:512:ARG:O	1:A:514:ILE:N	2.47	0.47
1:A:804:GLU:OE2	1:A:966:ILE:HG23	2.14	0.47

Continued on next page...

Continued from previous page...

Atom-1	Atom-2	Interatomic distance (Å)	Clash overlap (Å)
1:A:968:ARG:NH1	1:A:968:ARG:HB3	2.30	0.47
1:A:427:ASP:HB3	1:A:431:GLN:O	2.14	0.47
1:A:690:SER:O	1:A:693:LYS:HB3	2.14	0.47
1:A:112:LEU:O	1:A:115:SER:HB3	2.14	0.47
1:A:114:ASN:CG	1:A:673:ARG:HH22	2.18	0.46
1:A:381:VAL:C	1:A:383:ASP:H	2.19	0.46
1:A:237:GLU:OE1	1:A:237:GLU:N	2.43	0.46
1:A:284:ALA:O	1:A:288:GLU:HG3	2.16	0.46
1:A:110:LYS:HE2	1:A:110:LYS:HB3	1.51	0.46
1:A:424:MET:CE	1:A:459:VAL:HG11	2.46	0.46
1:A:574:LEU:HG	1:A:595:PHE:HE2	1.81	0.46
1:A:807:ASP:OD1	1:A:807:ASP:C	2.54	0.46
1:A:875:PHE:CZ	1:A:938:PHE:HB3	2.51	0.46
1:A:852:LYS:HD2	1:A:936:TYR:CE2	2.51	0.45
1:A:953:PHE:O	1:A:956:PHE:HB3	2.16	0.45
1:A:613:LEU:O	1:A:617:GLN:HG2	2.16	0.45
1:A:860:LYS:HG2	1:A:868:LEU:HD22	1.97	0.45
1:A:628:GLU:OE2	1:A:631:LYS:HE3	2.16	0.45
1:A:652:ARG:HA	1:A:652:ARG:HD2	1.68	0.45
1:A:870:ARG:O	1:A:873:GLU:HB3	2.16	0.45
1:A:535:ARG:O	1:A:538:VAL:HB	2.16	0.45
1:A:163:LEU:HG	1:A:282:ILE:HG21	1.98	0.45
1:A:609:PHE:HE1	1:A:646:PHE:CD2	2.34	0.45
1:A:811:THR:HG23	1:A:902:ARG:HH21	1.81	0.45
1:A:415:ASP:OD1	1:A:415:ASP:N	2.48	0.45
1:A:428:TYR:CE2	1:A:429:LYS:HG2	2.51	0.45
1:A:135:GLU:HG3	1:A:428:TYR:CG	2.52	0.44
1:A:383:ASP:HB3	1:A:556:ASN:O	2.17	0.44
1:A:126:HIS:O	1:A:130:SER:HB3	2.18	0.44
1:A:136:VAL:O	1:A:140:ARG:HG3	2.17	0.44
1:A:327:LEU:O	1:A:372:LYS:HA	2.18	0.44
1:A:330:GLY:C	1:A:331:ARG:HG3	2.38	0.44
1:A:436:GLU:HB2	1:A:474:TYR:HD1	1.83	0.44
1:A:886:THR:HG22	1:A:891:ILE:HD12	1.99	0.44
1:A:932:PHE:HE2	1:A:934:LEU:CD2	2.31	0.44
1:A:729:SER:OG	1:A:744:VAL:HG12	2.18	0.44
1:A:325:ILE:HG22	1:A:475:LEU:HD23	2.00	0.44
1:A:731:LEU:HD23	1:A:731:LEU:H	1.82	0.43
1:A:491:ILE:HG23	1:A:562:ALA:CB	2.48	0.43
1:A:462:ASN:HA	1:A:463:PRO:HD2	1.81	0.43
1:A:514:ILE:O	1:A:514:ILE:HG13	2.19	0.43

Continued on next page...

Continued from previous page...

Atom-1	Atom-2	Interatomic distance (Å)	Clash overlap (Å)
1:A:589:ASP:OD2	1:A:591:TYR:HD2	2.01	0.43
1:A:371:TRP:C	1:A:373:GLN:N	2.71	0.43
1:A:525:GLU:C	1:A:527:GLU:N	2.72	0.43
1:A:239:TYR:CD1	1:A:278:HIS:HA	2.53	0.43
1:A:837:ILE:HD13	1:A:858:TRP:CD2	2.53	0.43
1:A:266:LEU:HD12	1:A:267:HIS:ND1	2.34	0.43
1:A:525:GLU:HA	1:A:528:LYS:H	1.83	0.43
1:A:825:ILE:HD13	2:A:1101:68R:C31	2.49	0.42
1:A:330:GLY:C	1:A:369:PRO:HD2	2.40	0.42
1:A:982:ARG:HH12	1:A:992:SER:N	2.17	0.42
1:A:393:ALA:HB2	1:A:453:LEU:HD13	2.01	0.42
1:A:656:HIS:CG	1:A:820:ASP:HB2	2.55	0.42
1:A:702:SER:O	1:A:706:THR:HG22	2.19	0.42
1:A:169:LEU:HD21	1:A:251:TYR:CE2	2.55	0.42
1:A:139:PHE:CD1	1:A:625:LEU:HB3	2.55	0.42
1:A:460:ARG:HE	1:A:460:ARG:HB2	1.50	0.42
1:A:326:GLU:O	1:A:474:TYR:N	2.47	0.42
1:A:383:ASP:OD1	1:A:558:HIS:N	2.29	0.42
1:A:829:LEU:HA	1:A:829:LEU:HD23	1.83	0.42
1:A:918:ASN:HB2	1:A:988:GLU:OE2	2.20	0.42
1:A:224:LYS:C	1:A:226:THR:H	2.23	0.41
1:A:441:MET:HB2	1:A:441:MET:HE3	1.86	0.41
1:A:513:GLU:HA	1:A:515:LEU:HD12	2.01	0.41
1:A:619:LEU:HA	1:A:619:LEU:HD23	1.84	0.41
1:A:902:ARG:HG3	1:A:908:PHE:HE2	1.85	0.41
1:A:1024:ARG:NH1	1:A:1024:ARG:HG3	2.35	0.41
1:A:328:ILE:HD12	1:A:472:VAL:HG12	2.02	0.41
1:A:241:LEU:O	1:A:250:LEU:N	2.48	0.41
1:A:323:PHE:O	1:A:377:PHE:HB2	2.20	0.41
1:A:858:TRP:CZ2	1:A:862:LYS:HE3	2.55	0.41
1:A:676:THR:O	1:A:679:MET:HB3	2.20	0.41
1:A:428:TYR:CZ	1:A:429:LYS:HG2	2.55	0.41
1:A:525:GLU:O	1:A:528:LYS:HG2	2.20	0.41
1:A:492:LEU:HD23	1:A:492:LEU:O	2.20	0.41
1:A:600:LEU:HD23	1:A:600:LEU:HA	1.85	0.41
1:A:632:PHE:O	1:A:636:ARG:HG2	2.20	0.41
1:A:750:THR:HG23	2:A:1101:68R:CL1	2.57	0.41
1:A:790:THR:HG21	1:A:912:PHE:CD1	2.56	0.41
1:A:898:ASN:HB2	1:A:910:ILE:O	2.20	0.41
1:A:316:LEU:HB2	1:A:317:TRP:H	1.69	0.41
1:A:319:LEU:O	1:A:382:CYS:HB3	2.21	0.41

Continued on next page...

Continued from previous page...

Atom-1	Atom-2	Interatomic distance (Å)	Clash overlap (Å)
1:A:360:SER:OG	1:A:361:SER:N	2.54	0.41
1:A:557:LYS:HD2	1:A:557:LYS:HA	1.69	0.41
1:A:713:GLU:O	1:A:717:MET:HG3	2.21	0.41
1:A:491:ILE:O	1:A:491:ILE:CG2	2.69	0.41
1:A:191:LEU:HD12	1:A:206:GLN:HG2	2.03	0.40
1:A:935:THR:HB	1:A:938:PHE:CE2	2.57	0.40
1:A:365:VAL:O	1:A:367:SER:N	2.54	0.40
1:A:567:LEU:O	1:A:571:TRP:HE3	2.05	0.40
1:A:129:ASP:C	1:A:131:LEU:N	2.74	0.40
1:A:145:GLN:O	1:A:149:GLU:OE2	2.39	0.40
1:A:750:THR:OG1	1:A:751:PHE:N	2.53	0.40
1:A:795:GLN:HE21	1:A:812:PRO:HB2	1.87	0.40
1:A:525:GLU:HA	1:A:527:GLU:H	1.87	0.40
1:A:1014:HIS:NE2	1:A:1018:LYS:HE2	2.37	0.40
1:A:242:GLN:HB2	1:A:249:TYR:CZ	2.57	0.40
1:A:271:THR:O	1:A:273:HIS:CE1	2.75	0.40
1:A:424:MET:HE2	1:A:459:VAL:HG11	2.03	0.40

There are no symmetry-related clashes.

5.3 Torsion angles [i](#)

5.3.1 Protein backbone [i](#)

In the following table, the Percentiles column shows the percent Ramachandran outliers of the chain as a percentile score with respect to all X-ray entries followed by that with respect to entries of similar resolution.

The Analysed column shows the number of residues for which the backbone conformation was analysed, and the total number of residues.

Mol	Chain	Analysed	Favoured	Allowed	Outliers	Percentiles
1	A	792/939 (84%)	682 (86%)	79 (10%)	31 (4%)	3 6

All (31) Ramachandran outliers are listed below:

Mol	Chain	Res	Type
1	A	130	SER
1	A	253	ASN
1	A	264	SER
1	A	366	CYS

Continued on next page...

Continued from previous page...

Mol	Chain	Res	Type
1	A	372	LYS
1	A	465	THR
1	A	843	ASN
1	A	844	MET
1	A	944	GLN
1	A	359	SER
1	A	388	ALA
1	A	397	VAL
1	A	478	VAL
1	A	487	ALA
1	A	893	ASP
1	A	387	MET
1	A	427	ASP
1	A	430	ASP
1	A	493	GLU
1	A	268	SER
1	A	513	GLU
1	A	589	ASP
1	A	129	ASP
1	A	368	GLU
1	A	464	ASN
1	A	586	SER
1	A	867	ALA
1	A	514	ILE
1	A	328	ILE
1	A	113	ILE
1	A	931	PRO

5.3.2 Protein sidechains [i](#)

In the following table, the Percentiles column shows the percent sidechain outliers of the chain as a percentile score with respect to all X-ray entries followed by that with respect to entries of similar resolution.

The Analysed column shows the number of residues for which the sidechain conformation was analysed, and the total number of residues.

Mol	Chain	Analysed	Rotameric	Outliers	Percentiles
1	A	724/827 (88%)	697 (96%)	27 (4%)	34 59

All (27) residues with a non-rotameric sidechain are listed below:

Mol	Chain	Res	Type
1	A	109	VAL
1	A	166	SER
1	A	187	ASN
1	A	190	LEU
1	A	199	SER
1	A	316	LEU
1	A	359	SER
1	A	374	ARG
1	A	460	ARG
1	A	464	ASN
1	A	471	LEU
1	A	515	LEU
1	A	550	LEU
1	A	594	SER
1	A	676	THR
1	A	681	VAL
1	A	707	THR
1	A	792	GLN
1	A	822	THR
1	A	859	LEU
1	A	863	ASN
1	A	919	PHE
1	A	937	ASP
1	A	938	PHE
1	A	965	THR
1	A	988	GLU
1	A	1000	ASP

Sometimes sidechains can be flipped to improve hydrogen bonding and reduce clashes. All (4) such sidechains are listed below:

Mol	Chain	Res	Type
1	A	114	ASN
1	A	278	HIS
1	A	656	HIS
1	A	795	GLN

5.3.3 RNA [i](#)

There are no RNA molecules in this entry.

5.4 Non-standard residues in protein, DNA, RNA chains [i](#)

There are no non-standard protein/DNA/RNA residues in this entry.

5.5 Carbohydrates [i](#)

There are no monosaccharides in this entry.

5.6 Ligand geometry [i](#)

1 ligand is modelled in this entry.

In the following table, the Counts columns list the number of bonds (or angles) for which Mogul statistics could be retrieved, the number of bonds (or angles) that are observed in the model and the number of bonds (or angles) that are defined in the Chemical Component Dictionary. The Link column lists molecule types, if any, to which the group is linked. The Z score for a bond length (or angle) is the number of standard deviations the observed value is removed from the expected value. A bond length (or angle) with $|Z| > 2$ is considered an outlier worth inspection. RMSZ is the root-mean-square of all Z scores of the bond lengths (or angles).

Mol	Type	Chain	Res	Link	Bond lengths			Bond angles		
					Counts	RMSZ	# Z > 2	Counts	RMSZ	# Z > 2
2	68R	A	1101	-	36,39,39	1.20	3 (8%)	39,55,55	1.80	11 (28%)

In the following table, the Chirals column lists the number of chiral outliers, the number of chiral centers analysed, the number of these observed in the model and the number defined in the Chemical Component Dictionary. Similar counts are reported in the Torsion and Rings columns. '-' means no outliers of that kind were identified.

Mol	Type	Chain	Res	Link	Chirals	Torsions	Rings
2	68R	A	1101	-	-	1/11/17/17	0/5/5/5

All (3) bond length outliers are listed below:

Mol	Chain	Res	Type	Atoms	Z	Observed(Å)	Ideal(Å)
2	A	1101	68R	C23-C22	-3.67	1.37	1.41
2	A	1101	68R	C22-N21	3.22	1.40	1.35
2	A	1101	68R	C05-C06	2.33	1.43	1.39

All (11) bond angle outliers are listed below:

Mol	Chain	Res	Type	Atoms	Z	Observed(°)	Ideal(°)
2	A	1101	68R	C05-C06-CL1	4.70	125.73	119.59

Continued on next page...

Continued from previous page...

Mol	Chain	Res	Type	Atoms	Z	Observed(°)	Ideal(°)
2	A	1101	68R	C18-C13-N09	3.94	124.36	119.64
2	A	1101	68R	C26-N25-C24	-3.10	113.44	118.77
2	A	1101	68R	C04-C05-C10	-2.97	115.77	118.50
2	A	1101	68R	C01-C06-CL1	-2.70	112.99	118.41
2	A	1101	68R	C22-C23-C24	-2.56	117.63	119.44
2	A	1101	68R	C24-C23-C29	2.48	122.86	118.57
2	A	1101	68R	N28-C24-N25	-2.35	113.20	118.35
2	A	1101	68R	O11-C10-C05	-2.20	120.15	124.25
2	A	1101	68R	C15-C14-C13	2.17	122.52	119.68
2	A	1101	68R	C05-C10-N09	2.03	117.01	114.87

There are no chirality outliers.

All (1) torsion outliers are listed below:

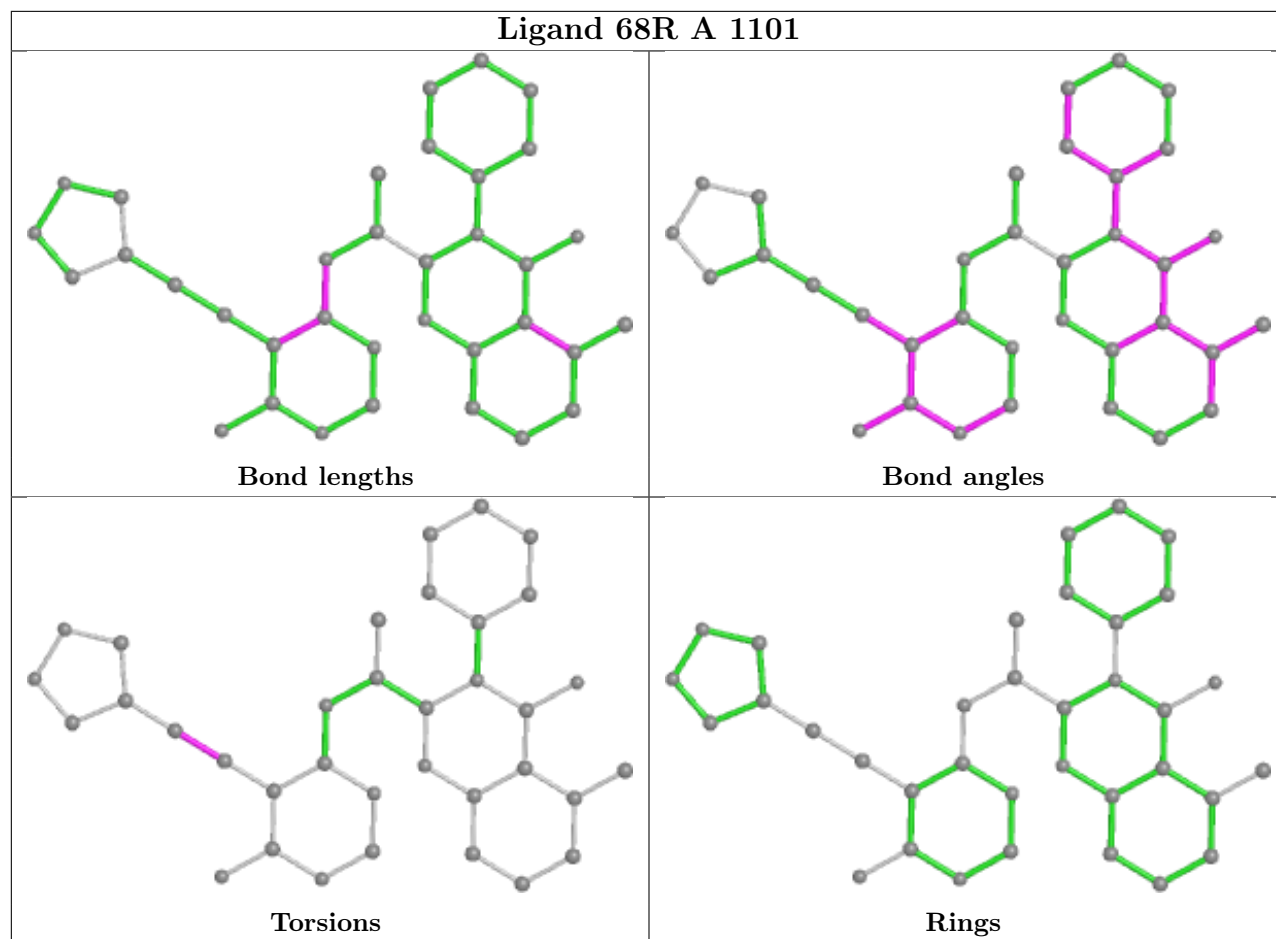
Mol	Chain	Res	Type	Atoms
2	A	1101	68R	C23-C29-C30-C31

There are no ring outliers.

1 monomer is involved in 4 short contacts:

Mol	Chain	Res	Type	Clashes	Symm-Clashes
2	A	1101	68R	4	0

The following is a two-dimensional graphical depiction of Mogul quality analysis of bond lengths, bond angles, torsion angles, and ring geometry for all instances of the Ligand of Interest. In addition, ligands with molecular weight > 250 and outliers as shown on the validation Tables will also be included. For torsion angles, if less than 5% of the Mogul distribution of torsion angles is within 10 degrees of the torsion angle in question, then that torsion angle is considered an outlier. Any bond that is central to one or more torsion angles identified as an outlier by Mogul will be highlighted in the graph. For rings, the root-mean-square deviation (RMSD) between the ring in question and similar rings identified by Mogul is calculated over all ring torsion angles. If the average RMSD is greater than 60 degrees and the minimal RMSD between the ring in question and any Mogul-identified rings is also greater than 60 degrees, then that ring is considered an outlier. The outliers are highlighted in purple. The color gray indicates Mogul did not find sufficient equivalents in the CSD to analyse the geometry.



5.7 Other polymers [i](#)

There are no such residues in this entry.

5.8 Polymer linkage issues [i](#)

There are no chain breaks in this entry.

6 Fit of model and data [i](#)

6.1 Protein, DNA and RNA chains [i](#)

In the following table, the column labelled ‘#RSRZ> 2’ contains the number (and percentage) of RSRZ outliers, followed by percent RSRZ outliers for the chain as percentile scores relative to all X-ray entries and entries of similar resolution. The OWAB column contains the minimum, median, 95th percentile and maximum values of the occupancy-weighted average B-factor per residue. The column labelled ‘Q< 0.9’ lists the number of (and percentage) of residues with an average occupancy less than 0.9.

Mol	Chain	Analysed	<RSRZ>	#RSRZ>2	OWAB(Å ²)	Q<0.9
1	A	816/939 (86%)	-0.25	12 (1%) 73 70	23, 52, 88, 141	0

All (12) RSRZ outliers are listed below:

Mol	Chain	Res	Type	RSRZ
1	A	488	LEU	4.0
1	A	109	VAL	3.2
1	A	842	SER	3.1
1	A	416	CYS	3.0
1	A	332	LYS	2.7
1	A	845	ALA	2.7
1	A	516	GLU	2.7
1	A	395	TYR	2.5
1	A	517	ARG	2.5
1	A	767	GLU	2.3
1	A	228	PHE	2.1
1	A	570	SER	2.0

6.2 Non-standard residues in protein, DNA, RNA chains [i](#)

There are no non-standard protein/DNA/RNA residues in this entry.

6.3 Carbohydrates [i](#)

There are no monosaccharides in this entry.

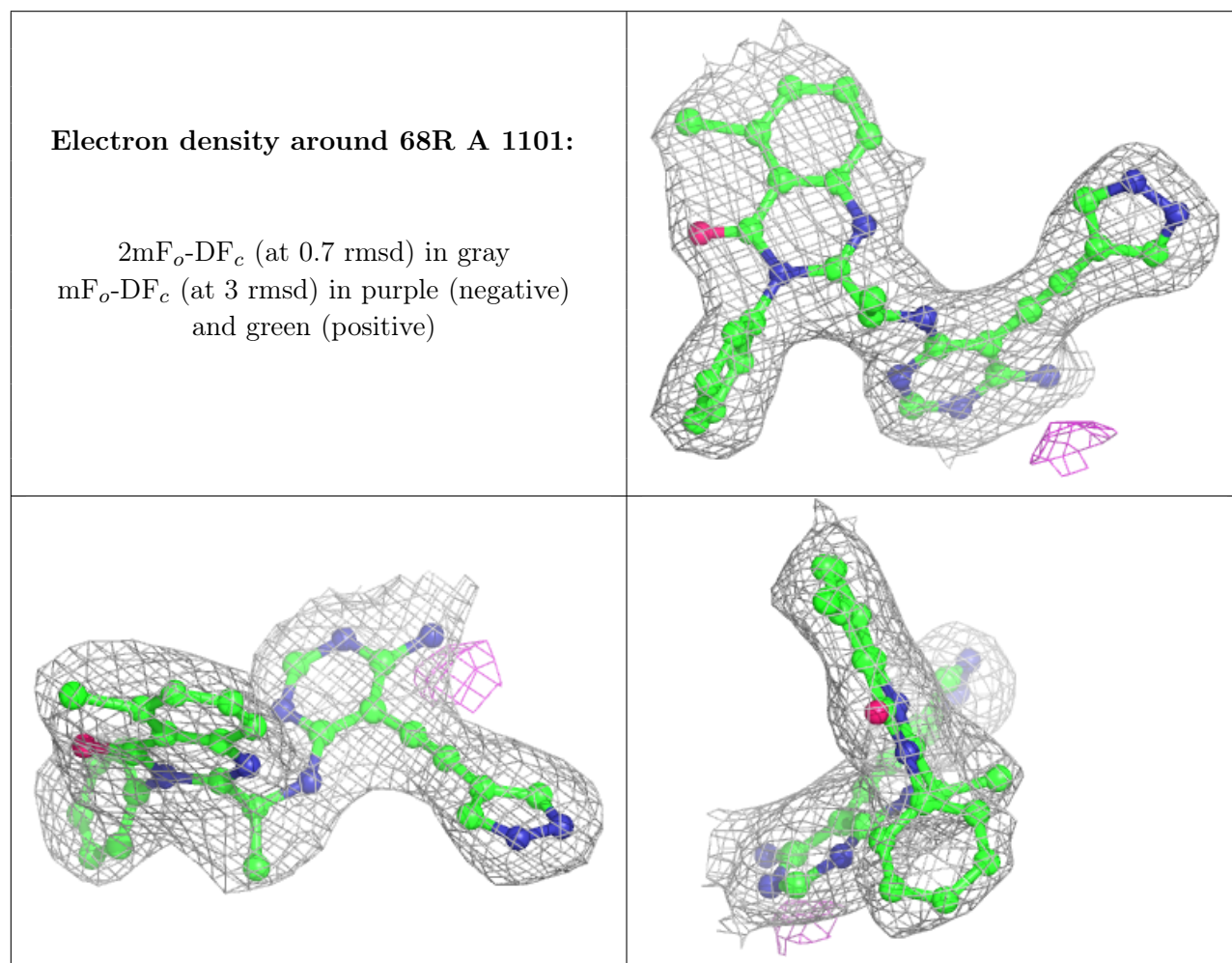
6.4 Ligands [i](#)

In the following table, the Atoms column lists the number of modelled atoms in the group and the number defined in the chemical component dictionary. The B-factors column lists the minimum,

median, 95th percentile and maximum values of B factors of atoms in the group. The column labelled 'Q< 0.9' lists the number of atoms with occupancy less than 0.9.

Mol	Type	Chain	Res	Atoms	RSCC	RSR	B-factors(\AA^2)	Q<0.9
2	68R	A	1101	35/35	0.96	0.15	18,31,37,73	0

The following is a graphical depiction of the model fit to experimental electron density of all instances of the Ligand of Interest. In addition, ligands with molecular weight > 250 and outliers as shown on the geometry validation Tables will also be included. Each fit is shown from different orientation to approximate a three-dimensional view.



6.5 Other polymers [i](#)

There are no such residues in this entry.