



wwPDB X-ray Structure Validation Summary Report ⓘ

Aug 20, 2023 – 07:04 AM EDT

PDB ID : 2I7S
Title : Crystal structure of Re(phen)(CO)₃ (Thr124His)(His83Gln) Azurin Cu(II)
from *Pseudomonas aeruginosa*
Authors : Gradinaru, C.; Crane, B.R.
Deposited on : 2006-08-31
Resolution : 1.35 Å(reported)

This is a wwPDB X-ray Structure Validation Summary Report for a publicly released PDB entry.

We welcome your comments at validation@mail.wwpdb.org

A user guide is available at

<https://www.wwpdb.org/validation/2017/XrayValidationReportHelp>

with specific help available everywhere you see the ⓘ symbol.

The types of validation reports are described at

<http://www.wwpdb.org/validation/2017/FAQs#types>.

The following versions of software and data (see [references ⓘ](#)) were used in the production of this report:

MolProbity : 4.02b-467
Mogul : 1.8.5 (274361), CSD as541be (2020)
Xtrriage (Phenix) : 1.13
EDS : 2.35
buster-report : 1.1.7 (2018)
Percentile statistics : 20191225.v01 (using entries in the PDB archive December 25th 2019)
Refmac : 5.8.0158
CCP4 : 7.0.044 (Gargrove)
Ideal geometry (proteins) : Engh & Huber (2001)
Ideal geometry (DNA, RNA) : Parkinson et al. (1996)
Validation Pipeline (wwPDB-VP) : 2.35

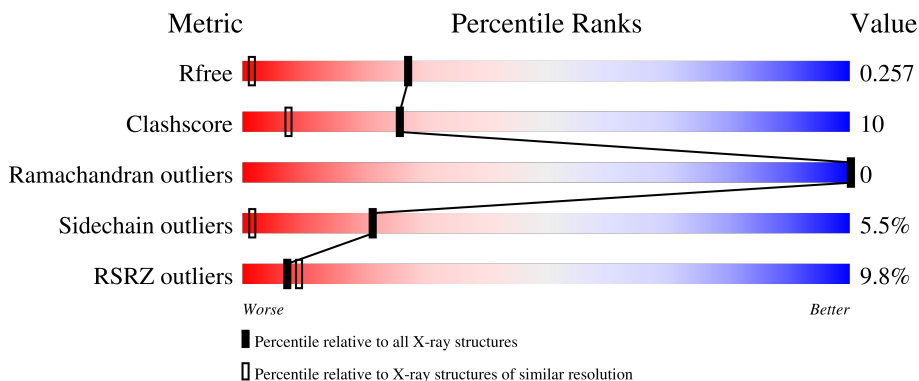
1 Overall quality at a glance

The following experimental techniques were used to determine the structure:

X-RAY DIFFRACTION

The reported resolution of this entry is 1.35 Å.

Percentile scores (ranging between 0-100) for global validation metrics of the entry are shown in the following graphic. The table shows the number of entries on which the scores are based.



Metric	Whole archive (#Entries)	Similar resolution (#Entries, resolution range(Å))
R_{free}	130704	1509 (1.38-1.34)
Clashscore	141614	1551 (1.38-1.34)
Ramachandran outliers	138981	1530 (1.38-1.34)
Sidechain outliers	138945	1530 (1.38-1.34)
RSRZ outliers	127900	1487 (1.38-1.34)

The table below summarises the geometric issues observed across the polymeric chains and their fit to the electron density. The red, orange, yellow and green segments of the lower bar indicate the fraction of residues that contain outliers for ≥ 3 , 2, 1 and 0 types of geometric quality criteria respectively. A grey segment represents the fraction of residues that are not modelled. The numeric value for each fraction is indicated below the corresponding segment, with a dot representing fractions $\leq 5\%$. The upper red bar (where present) indicates the fraction of residues that have poor fit to the electron density. The numeric value is given above the bar.

Mol	Chain	Length	Quality of chain
1	A	128	 9% 80% 17% .
1	B	128	 5% 91% 6% .
1	C	128	 13% 84% 11% 5%
1	D	128	 12% 82% 13% 5%

2 Entry composition [i](#)

There are 5 unique types of molecules in this entry. The entry contains 4491 atoms, of which 0 are hydrogens and 0 are deuteriums.

In the tables below, the ZeroOcc column contains the number of atoms modelled with zero occupancy, the AltConf column contains the number of residues with at least one atom in alternate conformation and the Trace column contains the number of residues modelled with at most 2 atoms.

- Molecule 1 is a protein called Azurin.

Mol	Chain	Residues	Atoms					ZeroOcc	AltConf	Trace
			Total	C	N	O	S			
1	A	128	988	616	167	194	11	0	5	0
1	B	128	987	613	166	198	10	0	5	0
1	C	128	978	610	166	193	9	0	1	0
1	D	128	981	611	166	194	10	0	3	0

There are 12 discrepancies between the modelled and reference sequences:

Chain	Residue	Modelled	Actual	Comment	Reference
A	2	GLN	GLU	conflict	UNP P00282
A	83	GLN	HIS	engineered mutation	UNP P00282
A	124	HIS	THR	engineered mutation	UNP P00282
B	202	GLN	GLU	conflict	UNP P00282
B	283	GLN	HIS	engineered mutation	UNP P00282
B	324	HIS	THR	engineered mutation	UNP P00282
C	402	GLN	GLU	conflict	UNP P00282
C	483	GLN	HIS	engineered mutation	UNP P00282
C	524	HIS	THR	engineered mutation	UNP P00282
D	602	GLN	GLU	conflict	UNP P00282
D	683	GLN	HIS	engineered mutation	UNP P00282
D	724	HIS	THR	engineered mutation	UNP P00282

- Molecule 2 is COPPER (II) ION (three-letter code: CU) (formula: Cu).

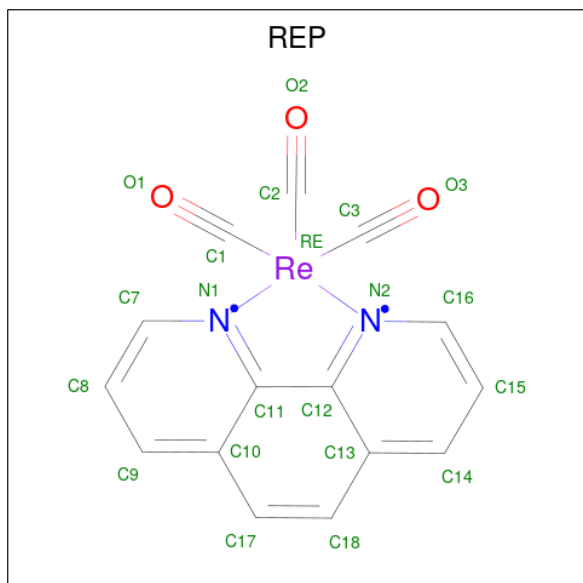
Mol	Chain	Residues	Atoms		ZeroOcc	AltConf
2	A	1	Total	Cu	0	0
			1	1		
2	B	1	Total	Cu	0	0
			1	1		

Continued on next page...

Continued from previous page...

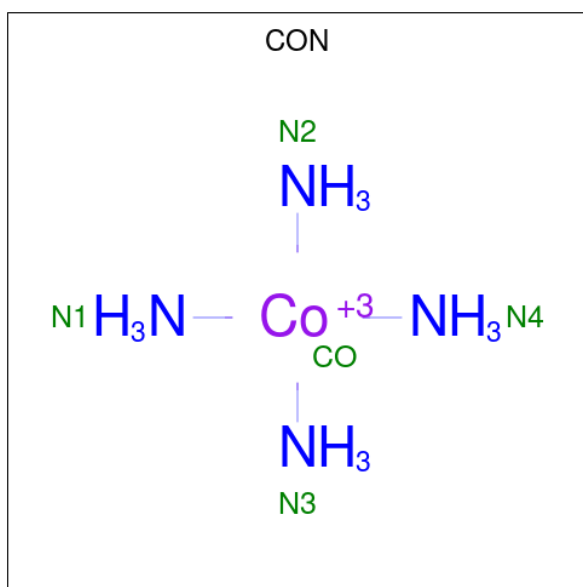
Mol	Chain	Residues	Atoms	ZeroOcc	AltConf
2	C	1	Total Cu 1 1	0	0
2	D	1	Total Cu 1 1	0	0

- Molecule 3 is (1,10 PHENANTHROLINE)-(TRI-CARBON MONOXIDE) RHENIUM (I) (three-letter code: REP) (formula: $C_{15}H_8N_2O_3Re$).



Mol	Chain	Residues	Atoms	ZeroOcc	AltConf
3	A	1	Total C N O Re 21 15 2 3 1	0	0
3	B	1	Total C N O Re 21 15 2 3 1	0	0
3	C	1	Total C N O Re 21 15 2 3 1	0	0
3	D	1	Total C N O Re 21 15 2 3 1	0	0

- Molecule 4 is COBALT TETRAAMMINE ION (three-letter code: CON) (formula: $CoH_{12}N_4$).



Mol	Chain	Residues	Atoms			ZeroOcc	AltConf
			Total	Co	N		
4	B	1	5	1	4	0	0

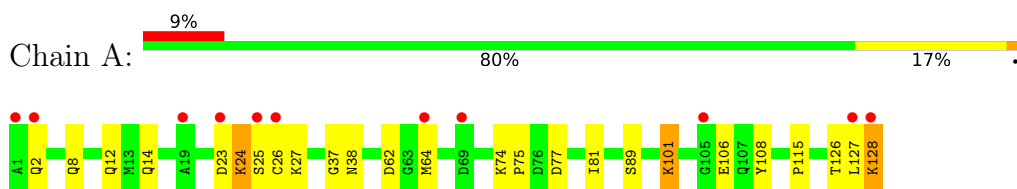
- Molecule 5 is water.

Mol	Chain	Residues	Atoms		ZeroOcc	AltConf
5	A	103	Total	O	0	0
			103	103		
5	B	167	Total	O	0	0
			167	167		
5	C	86	Total	O	0	0
			86	86		
5	D	108	Total	O	0	0
			108	108		

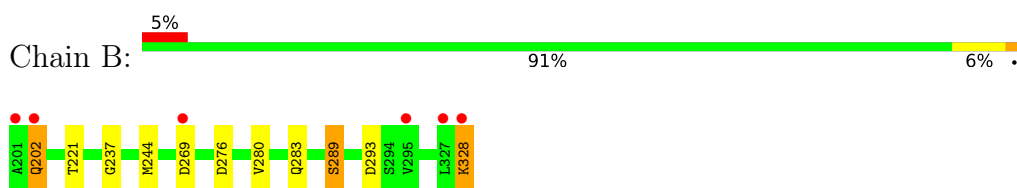
3 Residue-property plots [i](#)

These plots are drawn for all protein, RNA, DNA and oligosaccharide chains in the entry. The first graphic for a chain summarises the proportions of the various outlier classes displayed in the second graphic. The second graphic shows the sequence view annotated by issues in geometry and electron density. Residues are color-coded according to the number of geometric quality criteria for which they contain at least one outlier: green = 0, yellow = 1, orange = 2 and red = 3 or more. A red dot above a residue indicates a poor fit to the electron density ($RSRZ > 2$). Stretches of 2 or more consecutive residues without any outlier are shown as a green connector. Residues present in the sample, but not in the model, are shown in grey.

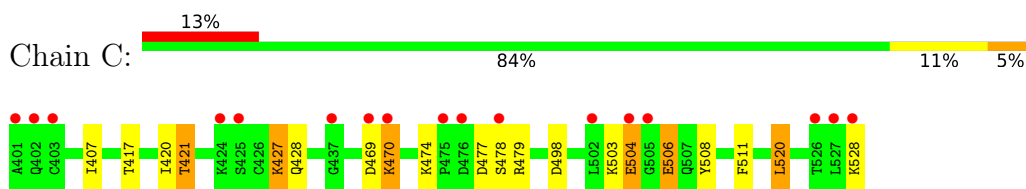
- Molecule 1: Azurin



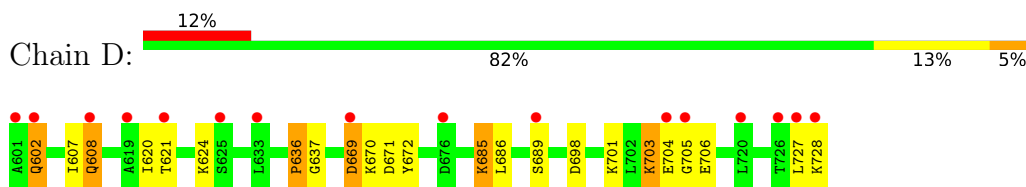
- Molecule 1: Azurin



- Molecule 1: Azurin



- Molecule 1: Azurin



4 Data and refinement statistics i

Property	Value	Source
Space group	P 1	Depositor
Cell constants a, b, c, α , β , γ	33.13Å 58.98Å 66.11Å 82.92° 78.11° 76.68°	Depositor
Resolution (Å)	30.00 – 1.35 28.61 – 1.35	Depositor EDS
% Data completeness (in resolution range)	95.6 (30.00-1.35) 90.9 (28.61-1.35)	Depositor EDS
R_{merge}	(Not available)	Depositor
R_{sym}	0.08	Depositor
$\langle I/\sigma(I) \rangle$ ¹	2.53 (at 1.35Å)	Xtrriage
Refinement program	SHELX, SHELXL-97	Depositor
R, R_{free}	0.205 , 0.239 0.213 , 0.257	Depositor DCC
R_{free} test set	4992 reflections (5.00%)	wwPDB-VP
Wilson B-factor (Å ²)	14.7	Xtrriage
Anisotropy	0.178	Xtrriage
Bulk solvent k_{sol} (e/Å ³), B_{sol} (Å ²)	0.33 , 52.0	EDS
L-test for twinning ²	$\langle L \rangle = 0.50$, $\langle L^2 \rangle = 0.33$	Xtrriage
Estimated twinning fraction	No twinning to report.	Xtrriage
F_o, F_c correlation	0.96	EDS
Total number of atoms	4491	wwPDB-VP
Average B, all atoms (Å ²)	26.0	wwPDB-VP

Xtrriage's analysis on translational NCS is as follows: *The analyses of the Patterson function reveals a significant off-origin peak that is 27.06 % of the origin peak, indicating pseudo-translational symmetry. The chance of finding a peak of this or larger height randomly in a structure without pseudo-translational symmetry is equal to 2.3548e-03. The detected translational NCS is most likely also responsible for the elevated intensity ratio.*

¹Intensities estimated from amplitudes.

²Theoretical values of $\langle |L| \rangle$, $\langle L^2 \rangle$ for acentric reflections are 0.5, 0.333 respectively for untwinned datasets, and 0.375, 0.2 for perfectly twinned datasets.

5 Model quality [i](#)

5.1 Standard geometry [i](#)

Bond lengths and bond angles in the following residue types are not validated in this section: REP, CU, CON

The Z score for a bond length (or angle) is the number of standard deviations the observed value is removed from the expected value. A bond length (or angle) with $|Z| > 5$ is considered an outlier worth inspection. RMSZ is the root-mean-square of all Z scores of the bond lengths (or angles).

Mol	Chain	Bond lengths		Bond angles	
		RMSZ	# Z >5	RMSZ	# Z >5
1	A	0.44	0/1032	0.98	0/1387
1	B	0.52	0/1029	1.11	2/1385 (0.1%)
1	C	0.43	0/1000	1.08	4/1347 (0.3%)
1	D	0.44	0/1015	1.06	3/1365 (0.2%)
All	All	0.46	0/4076	1.06	9/5484 (0.2%)

There are no bond length outliers.

The worst 5 of 9 bond angle outliers are listed below:

Mol	Chain	Res	Type	Atoms	Z	Observed(°)	Ideal(°)
1	C	479	ARG	NE-CZ-NH2	-8.38	116.11	120.30
1	B	293	ASP	CB-CG-OD2	7.43	124.99	118.30
1	C	508	TYR	CB-CG-CD1	-6.14	117.32	121.00
1	D	636	PRO	C-N-CA	-5.94	109.82	122.30
1	C	511	PHE	CB-CG-CD2	-5.83	116.72	120.80

There are no chirality outliers.

There are no planarity outliers.

5.2 Too-close contacts [i](#)

In the following table, the Non-H and H(model) columns list the number of non-hydrogen atoms and hydrogen atoms in the chain respectively. The H(added) column lists the number of hydrogen atoms added and optimized by MolProbity. The Clashes column lists the number of clashes within the asymmetric unit, whereas Symm-Clashes lists symmetry-related clashes.

Mol	Chain	Non-H	H(model)	H(added)	Clashes	Symm-Clashes
1	A	988	0	972	33	0
1	B	987	0	964	11	0

Continued on next page...

Continued from previous page...

Mol	Chain	Non-H	H(model)	H(added)	Clashes	Symm-Clashes
1	C	978	0	957	16	0
1	D	981	0	955	23	0
2	A	1	0	0	0	0
2	B	1	0	0	0	0
2	C	1	0	0	0	0
2	D	1	0	0	0	0
3	A	21	0	8	0	0
3	B	21	0	8	0	0
3	C	21	0	8	0	0
3	D	21	0	8	0	0
4	B	5	0	0	0	0
5	A	103	0	0	11	1
5	B	167	0	0	0	0
5	C	86	0	0	4	1
5	D	108	0	0	1	1
All	All	4491	0	3880	83	2

The all-atom clashscore is defined as the number of clashes found per 1000 atoms (including hydrogen atoms). The all-atom clashscore for this structure is 10.

The worst 5 of 83 close contacts within the same asymmetric unit are listed below, sorted by their clash magnitude.

Atom-1	Atom-2	Interatomic distance (Å)	Clash overlap (Å)
1:A:64[A]:MET:HG3	5:A:1061:HOH:O	1.54	1.07
1:B:221[A]:THR:HG21	1:B:328:LYS:NZ	1.72	1.02
1:C:470:LYS:HD2	1:C:470:LYS:N	1.77	0.98
1:A:64[A]:MET:CG	5:A:1061:HOH:O	2.10	0.97
1:B:202:GLN:NE2	1:B:202:GLN:HA	1.76	0.96

All (2) symmetry-related close contacts are listed below. The label for Atom-2 includes the symmetry operator and encoded unit-cell translations to be applied.

Atom-1	Atom-2	Interatomic distance (Å)	Clash overlap (Å)
5:D:1156:HOH:O	5:D:1274:HOH:O[1_455]	2.16	0.04
5:A:1202:HOH:O	5:C:1277:HOH:O[1_545]	2.17	0.03

5.3 Torsion angles [i](#)

5.3.1 Protein backbone [i](#)

In the following table, the Percentiles column shows the percent Ramachandran outliers of the chain as a percentile score with respect to all X-ray entries followed by that with respect to entries of similar resolution.

The Analysed column shows the number of residues for which the backbone conformation was analysed, and the total number of residues.

Mol	Chain	Analysed	Favoured	Allowed	Outliers	Percentiles	
1	A	131/128 (102%)	130 (99%)	1 (1%)	0	100	100
1	B	131/128 (102%)	129 (98%)	2 (2%)	0	100	100
1	C	127/128 (99%)	121 (95%)	6 (5%)	0	100	100
1	D	129/128 (101%)	124 (96%)	5 (4%)	0	100	100
All	All	518/512 (101%)	504 (97%)	14 (3%)	0	100	100

There are no Ramachandran outliers to report.

5.3.2 Protein sidechains [i](#)

In the following table, the Percentiles column shows the percent sidechain outliers of the chain as a percentile score with respect to all X-ray entries followed by that with respect to entries of similar resolution.

The Analysed column shows the number of residues for which the sidechain conformation was analysed, and the total number of residues.

Mol	Chain	Analysed	Rotameric	Outliers	Percentiles	
1	A	115/110 (104%)	109 (95%)	6 (5%)	23	2
1	B	115/110 (104%)	111 (96%)	4 (4%)	36	6
1	C	111/110 (101%)	104 (94%)	7 (6%)	18	1
1	D	113/110 (103%)	105 (93%)	8 (7%)	14	1
All	All	454/440 (103%)	429 (94%)	25 (6%)	21	1

5 of 25 residues with a non-rotameric sidechain are listed below:

Mol	Chain	Res	Type
1	C	504	GLU
1	D	602	GLN
1	D	728	LYS

Continued on next page...

Continued from previous page...

Mol	Chain	Res	Type
1	C	520	LEU
1	D	608	GLN

Sometimes sidechains can be flipped to improve hydrogen bonding and reduce clashes. 5 of 7 such sidechains are listed below:

Mol	Chain	Res	Type
1	B	283	GLN
1	C	408	GLN
1	D	608	GLN
1	C	438	ASN
1	B	202	GLN

5.3.3 RNA [i](#)

There are no RNA molecules in this entry.

5.4 Non-standard residues in protein, DNA, RNA chains [i](#)

There are no non-standard protein/DNA/RNA residues in this entry.

5.5 Carbohydrates [i](#)

There are no monosaccharides in this entry.

5.6 Ligand geometry [i](#)

Of 9 ligands modelled in this entry, 4 are monoatomic - leaving 5 for Mogul analysis.

In the following table, the Counts columns list the number of bonds (or angles) for which Mogul statistics could be retrieved, the number of bonds (or angles) that are observed in the model and the number of bonds (or angles) that are defined in the Chemical Component Dictionary. The Link column lists molecule types, if any, to which the group is linked. The Z score for a bond length (or angle) is the number of standard deviations the observed value is removed from the expected value. A bond length (or angle) with $|Z| > 2$ is considered an outlier worth inspection. RMSZ is the root-mean-square of all Z scores of the bond lengths (or angles).

Mol	Type	Chain	Res	Link	Bond lengths			Bond angles		
					Counts	RMSZ	$\# Z > 2$	Counts	RMSZ	$\# Z > 2$
3	REP	D	804	1	12,24,24	1.54	2 (16%)	6,39,39	0.58	0

Mol	Type	Chain	Res	Link	Bond lengths			Bond angles		
					Counts	RMSZ	# Z > 2	Counts	RMSZ	# Z > 2
3	REP	B	802	1	12,24,24	1.53	2 (16%)	6,39,39	0.57	0
3	REP	C	803	1	12,24,24	1.53	2 (16%)	6,39,39	0.59	0
4	CON	B	850	-	0,4,4	-	-	-	-	-
3	REP	A	801	1	12,24,24	1.53	2 (16%)	6,39,39	0.57	0

In the following table, the Chirals column lists the number of chiral outliers, the number of chiral centers analysed, the number of these observed in the model and the number defined in the Chemical Component Dictionary. Similar counts are reported in the Torsion and Rings columns. '-' means no outliers of that kind were identified.

Mol	Type	Chain	Res	Link	Chirals	Torsions	Rings
3	REP	D	804	1	-	-	0/4/4/4
3	REP	C	803	1	-	-	0/4/4/4
3	REP	B	802	1	-	-	0/4/4/4
3	REP	A	801	1	-	-	0/4/4/4

The worst 5 of 8 bond length outliers are listed below:

Mol	Chain	Res	Type	Atoms	Z	Observed(Å)	Ideal(Å)
3	B	802	REP	C8-C9	-2.58	1.34	1.40
3	C	803	REP	C8-C9	-2.57	1.34	1.40
3	A	801	REP	C8-C9	-2.56	1.34	1.40
3	D	804	REP	C8-C9	-2.55	1.34	1.40
3	C	803	REP	C17-C18	-2.30	1.34	1.38

There are no bond angle outliers.

There are no chirality outliers.

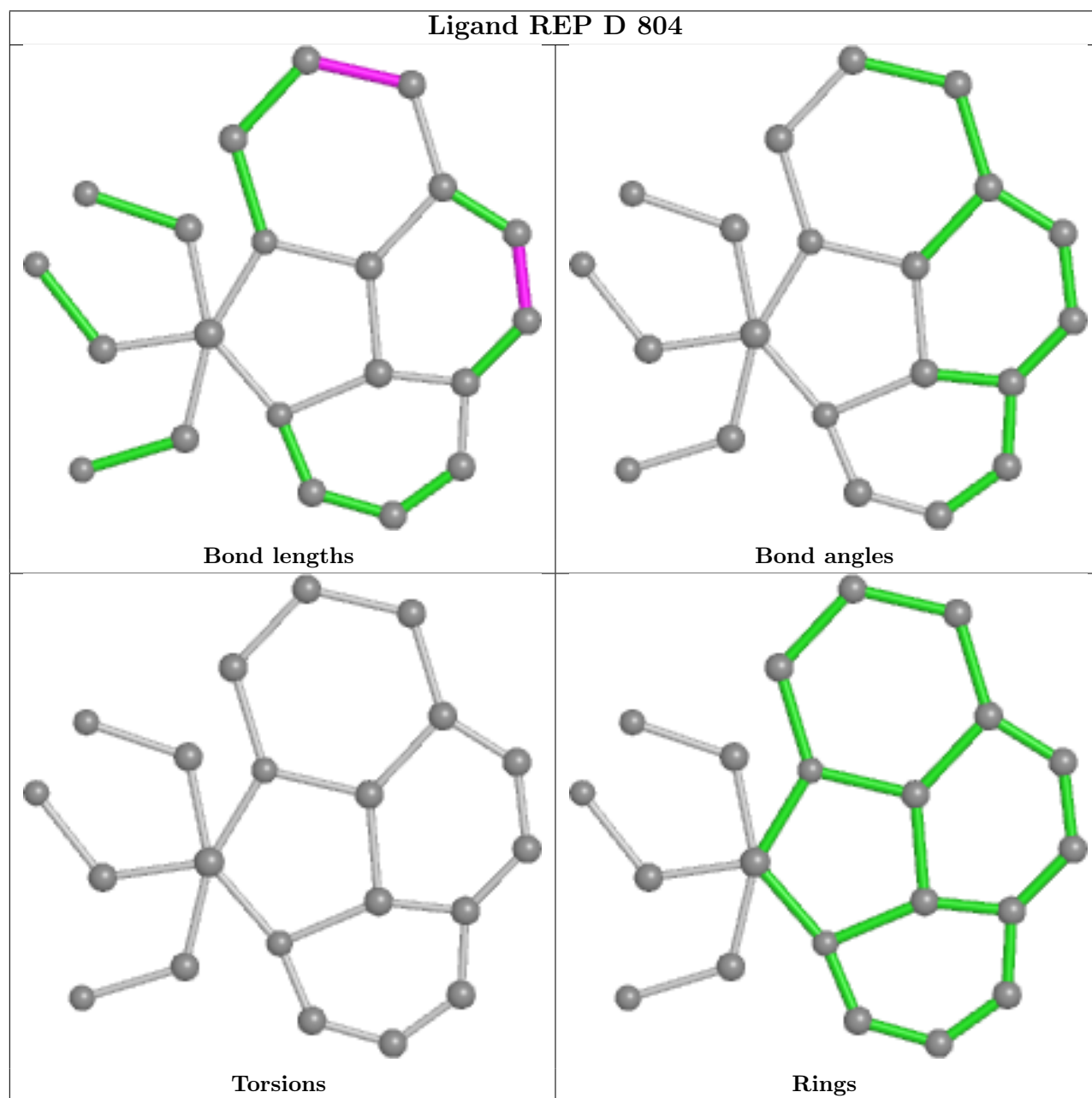
There are no torsion outliers.

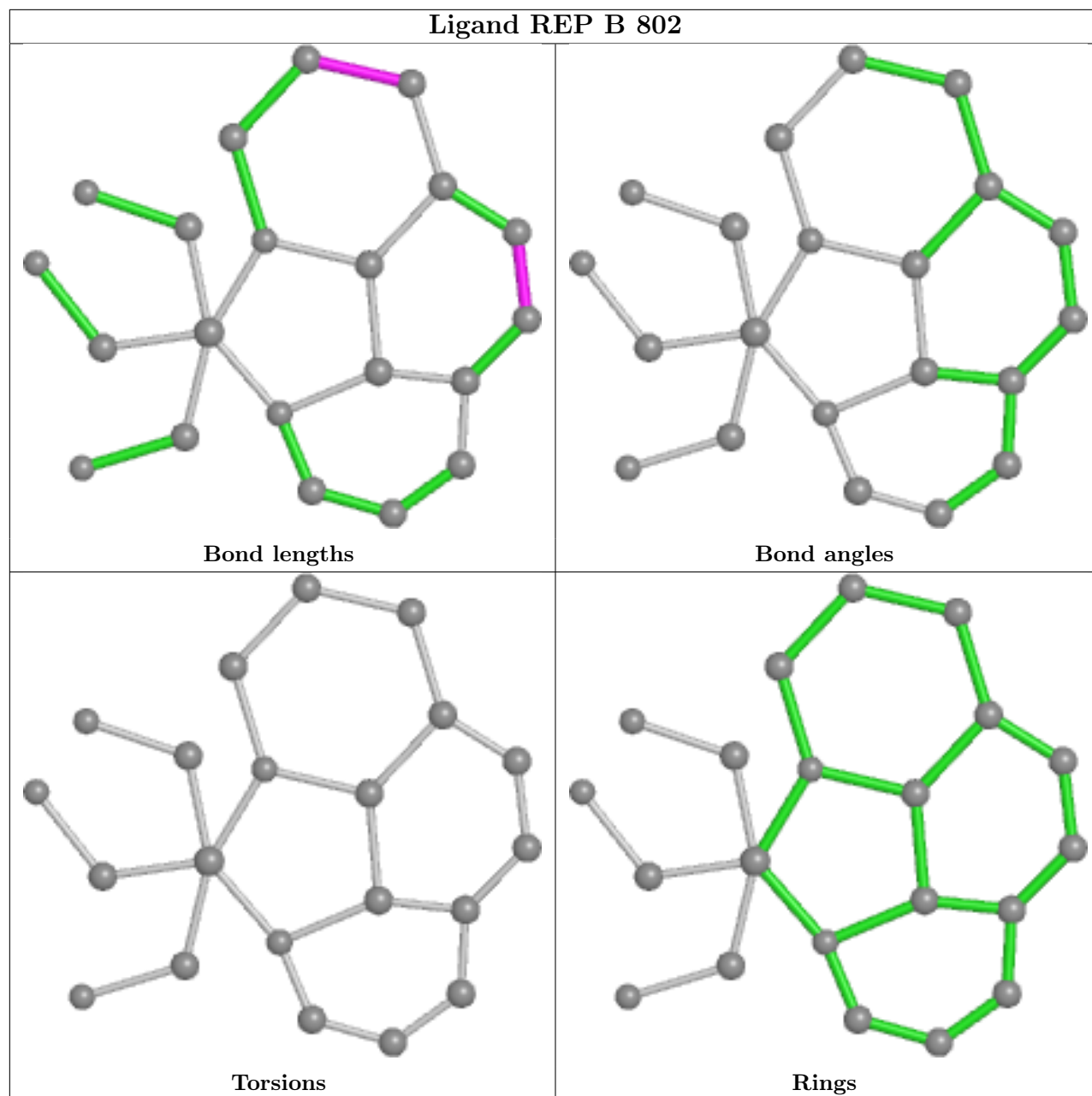
There are no ring outliers.

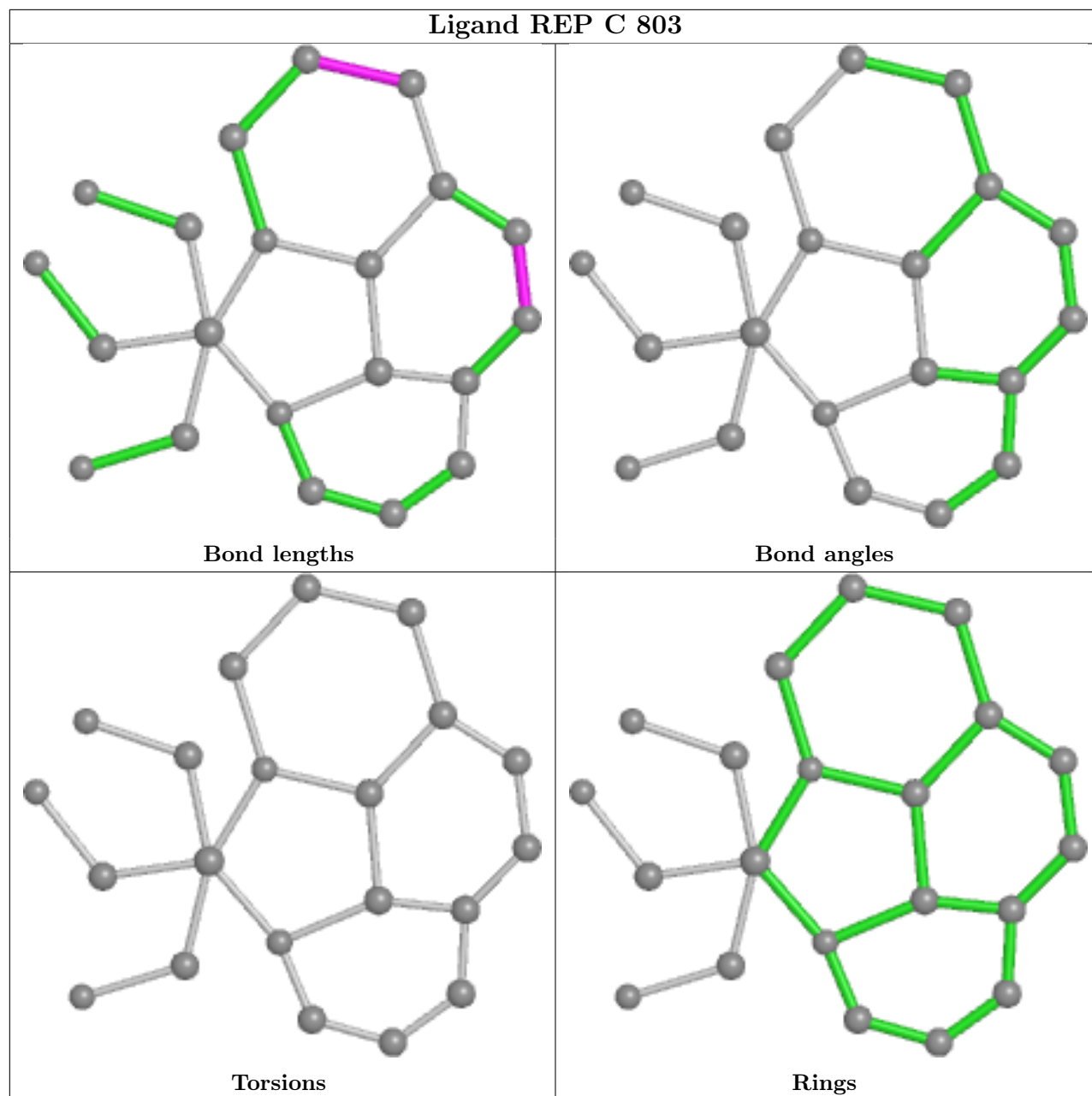
No monomer is involved in short contacts.

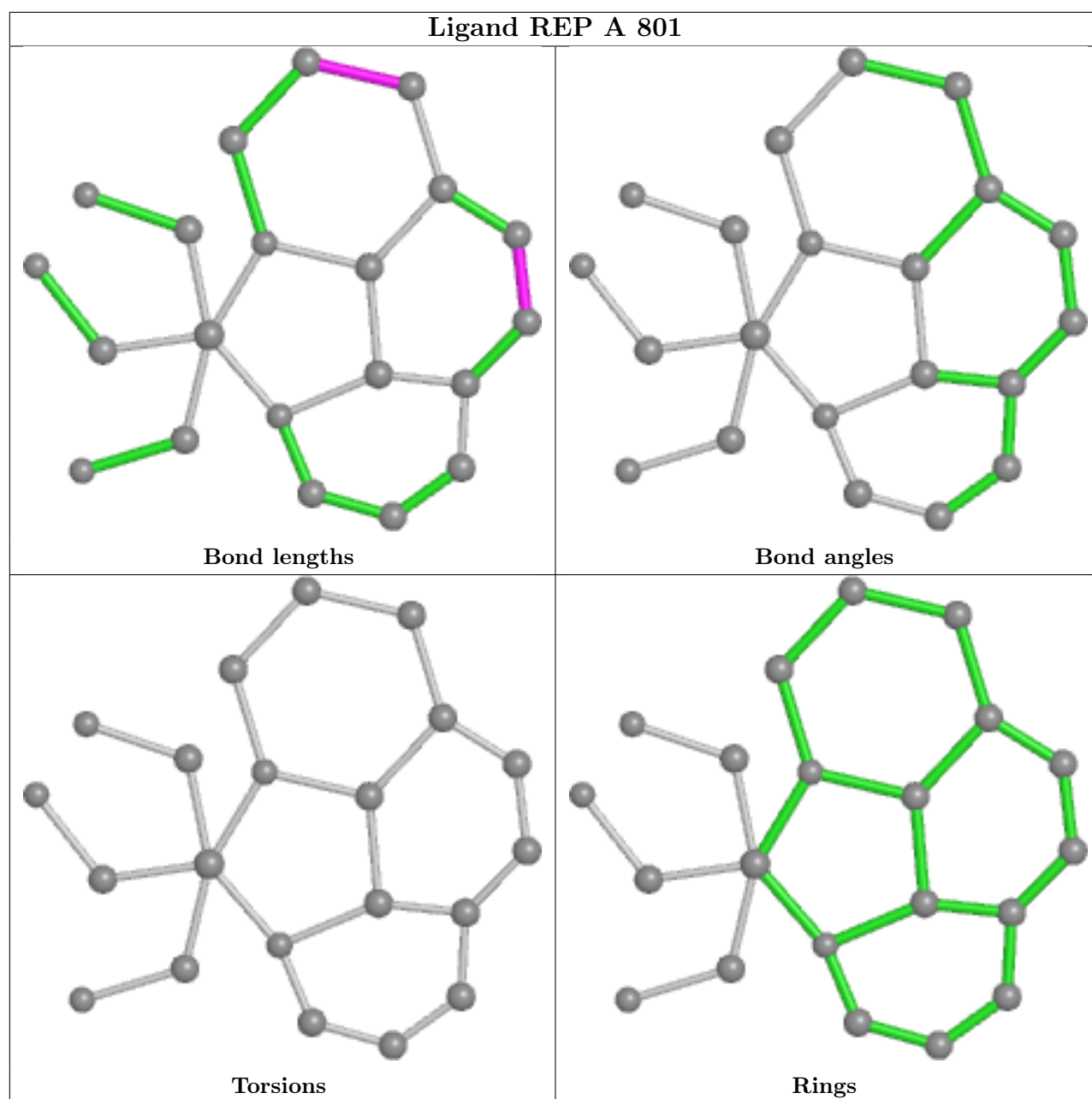
The following is a two-dimensional graphical depiction of Mogul quality analysis of bond lengths, bond angles, torsion angles, and ring geometry for all instances of the Ligand of Interest. In addition, ligands with molecular weight > 250 and outliers as shown on the validation Tables will also be included. For torsion angles, if less than 5% of the Mogul distribution of torsion angles is within 10 degrees of the torsion angle in question, then that torsion angle is considered an outlier. Any bond that is central to one or more torsion angles identified as an outlier by Mogul will be highlighted in the graph. For rings, the root-mean-square deviation (RMSD) between the ring in question and similar rings identified by Mogul is calculated over all ring torsion angles. If the average RMSD is greater than 60 degrees and the minimal RMSD between the ring in question and any Mogul-identified rings is also greater than 60 degrees, then that ring is considered an outlier.

The outliers are highlighted in purple. The color gray indicates Mogul did not find sufficient equivalents in the CSD to analyse the geometry.









5.7 Other polymers [i](#)

There are no such residues in this entry.

5.8 Polymer linkage issues [i](#)

There are no chain breaks in this entry.

6 Fit of model and data [i](#)

6.1 Protein, DNA and RNA chains [i](#)

In the following table, the column labelled ‘#RSRZ> 2’ contains the number (and percentage) of RSRZ outliers, followed by percent RSRZ outliers for the chain as percentile scores relative to all X-ray entries and entries of similar resolution. The OWAB column contains the minimum, median, 95th percentile and maximum values of the occupancy-weighted average B-factor per residue. The column labelled ‘Q< 0.9’ lists the number of (and percentage) of residues with an average occupancy less than 0.9.

Mol	Chain	Analysed	<RSRZ>	#RSRZ>2	OWAB(Å ²)	Q<0.9
1	A	128/128 (100%)	0.93	11 (8%) 10 12	13, 23, 42, 68	0
1	B	128/128 (100%)	0.76	6 (4%) 31 36	10, 18, 32, 50	0
1	C	128/128 (100%)	1.16	17 (13%) 3 3	14, 25, 44, 61	0
1	D	128/128 (100%)	1.04	16 (12%) 3 4	11, 25, 42, 80	0
All	All	512/512 (100%)	0.97	50 (9%) 7 9	10, 22, 42, 80	0

The worst 5 of 50 RSRZ outliers are listed below:

Mol	Chain	Res	Type	RSRZ
1	D	601	ALA	13.8
1	A	1	ALA	11.8
1	C	401	ALA	10.5
1	B	201	ALA	9.5
1	B	202	GLN	6.6

6.2 Non-standard residues in protein, DNA, RNA chains [i](#)

There are no non-standard protein/DNA/RNA residues in this entry.

6.3 Carbohydrates [i](#)

There are no monosaccharides in this entry.

6.4 Ligands [i](#)

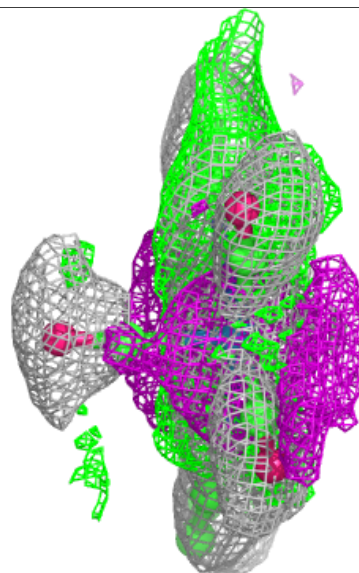
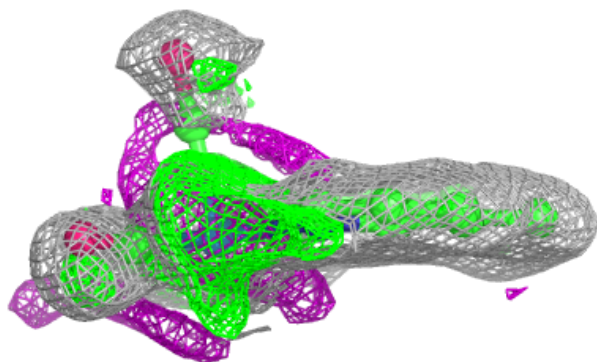
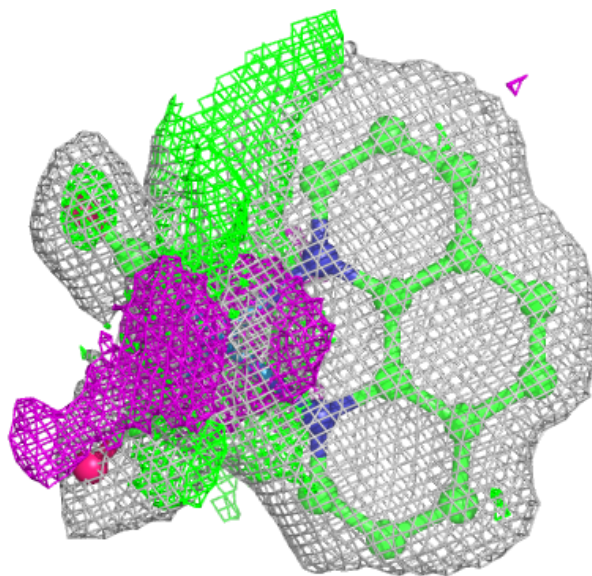
In the following table, the Atoms column lists the number of modelled atoms in the group and the number defined in the chemical component dictionary. The B-factors column lists the minimum, median, 95th percentile and maximum values of B factors of atoms in the group. The column labelled ‘Q< 0.9’ lists the number of atoms with occupancy less than 0.9.

Mol	Type	Chain	Res	Atoms	RSCC	RSR	B-factors(\AA^2)	Q<0.9
4	CON	B	850	5/5	0.95	0.13	26,28,45,47	0
3	REP	A	801	21/21	0.98	0.17	21,34,38,44	0
3	REP	B	802	21/21	0.98	0.17	24,36,76,157	0
3	REP	D	804	21/21	0.98	0.18	24,31,47,53	0
2	CU	C	903	1/1	0.98	0.08	17,17,17,17	0
2	CU	A	901	1/1	0.99	0.10	15,15,15,15	0
3	REP	C	803	21/21	0.99	0.20	24,37,72,90	0
2	CU	D	904	1/1	0.99	0.09	15,15,15,15	0
2	CU	B	902	1/1	0.99	0.10	12,12,12,12	0

The following is a graphical depiction of the model fit to experimental electron density of all instances of the Ligand of Interest. In addition, ligands with molecular weight > 250 and outliers as shown on the geometry validation Tables will also be included. Each fit is shown from different orientation to approximate a three-dimensional view.

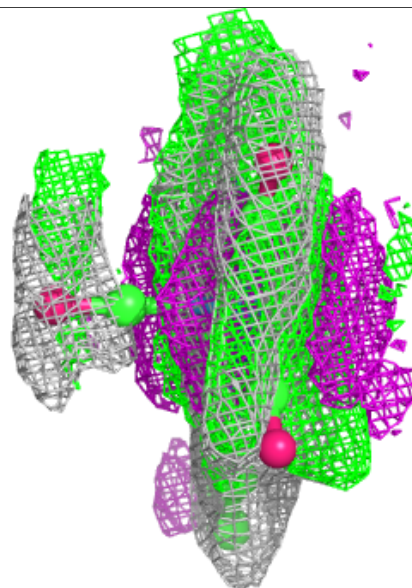
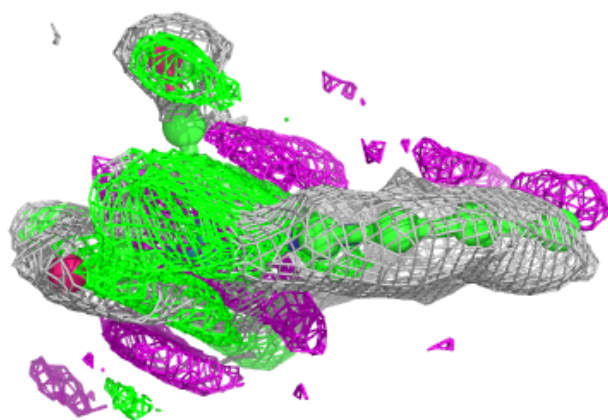
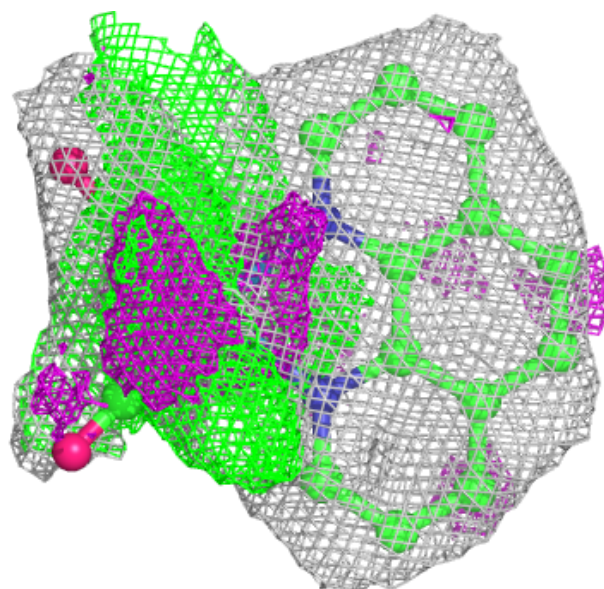
Electron density around REP A 801:

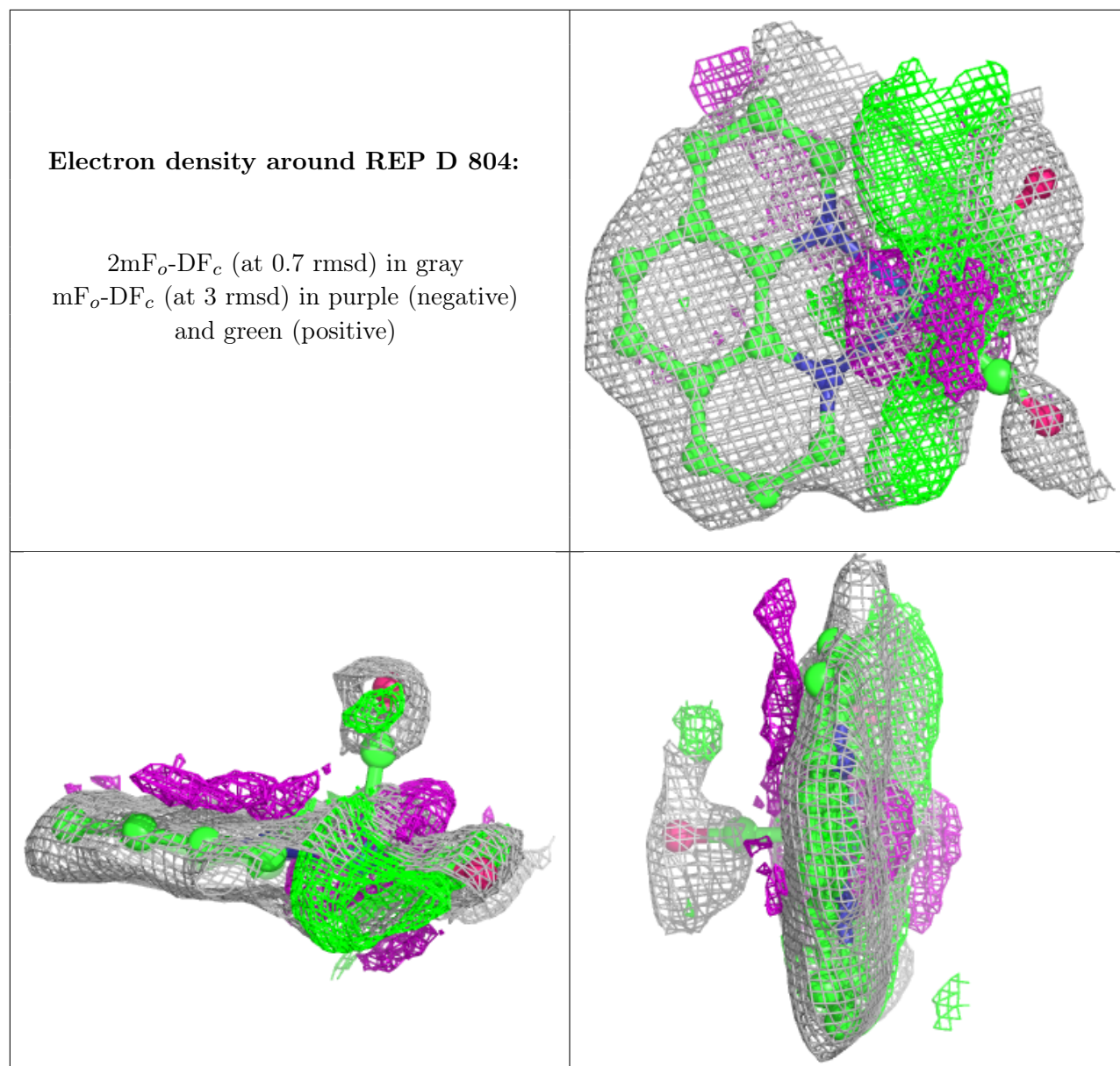
$2mF_o-DF_c$ (at 0.7 rmsd) in gray
 mF_o-DF_c (at 3 rmsd) in purple (negative)
and green (positive)

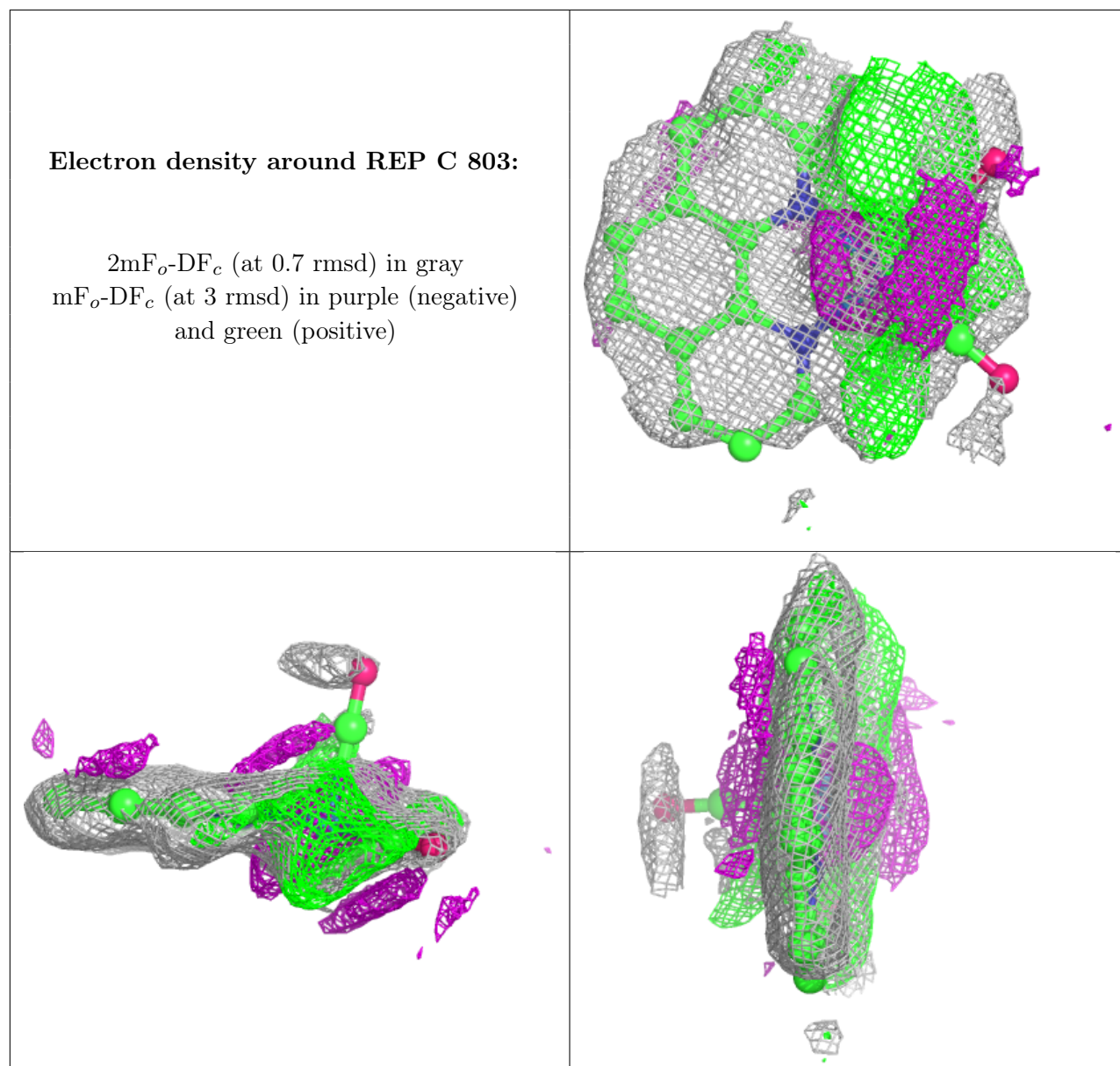


Electron density around REP B 802:

$2mF_o-DF_c$ (at 0.7 rmsd) in gray
 mF_o-DF_c (at 3 rmsd) in purple (negative)
and green (positive)







6.5 Other polymers [i](#)

There are no such residues in this entry.