



Full wwPDB X-ray Structure Validation Report ⓘ

Nov 1, 2023 – 04:42 AM EDT

PDB ID : 3I73
Title : Structural characterization for the nucleotide binding ability of subunit A with ADP of the A1AO ATP synthase
Authors : Manimekalai, S.M.S.; Kumar, A.; Balakrishna, A.M.; Gruber, G.
Deposited on : 2009-07-08
Resolution : 2.40 Å(reported)

This is a Full wwPDB X-ray Structure Validation Report for a publicly released PDB entry.

We welcome your comments at validation@mail.wwpdb.org

A user guide is available at

<https://www.wwpdb.org/validation/2017/XrayValidationReportHelp>

with specific help available everywhere you see the ⓘ symbol.

The types of validation reports are described at

<http://www.wwpdb.org/validation/2017/FAQs#types>.

The following versions of software and data (see [references ⓘ](#)) were used in the production of this report:

MolProbity : 4.02b-467
Mogul : 1.8.5 (274361), CSD as541be (2020)
Xtrriage (Phenix) : 1.13
EDS : 2.36
buster-report : 1.1.7 (2018)
Percentile statistics : 20191225.v01 (using entries in the PDB archive December 25th 2019)
Refmac : 5.8.0158
CCP4 : 7.0.044 (Gargrove)
Ideal geometry (proteins) : Engh & Huber (2001)
Ideal geometry (DNA, RNA) : Parkinson et al. (1996)
Validation Pipeline (wwPDB-VP) : 2.36

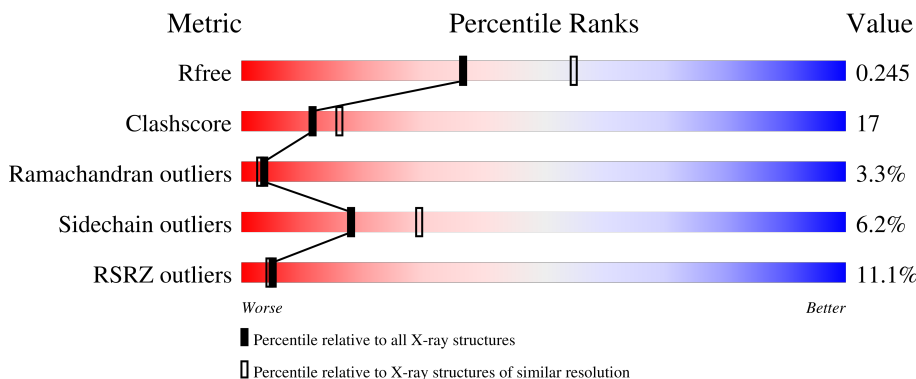
1 Overall quality at a glance

The following experimental techniques were used to determine the structure:

X-RAY DIFFRACTION

The reported resolution of this entry is 2.40 Å.

Percentile scores (ranging between 0-100) for global validation metrics of the entry are shown in the following graphic. The table shows the number of entries on which the scores are based.



Metric	Whole archive (#Entries)	Similar resolution (#Entries, resolution range(Å))
R_{free}	130704	3907 (2.40-2.40)
Clashscore	141614	4398 (2.40-2.40)
Ramachandran outliers	138981	4318 (2.40-2.40)
Sidechain outliers	138945	4319 (2.40-2.40)
RSRZ outliers	127900	3811 (2.40-2.40)

The table below summarises the geometric issues observed across the polymeric chains and their fit to the electron density. The red, orange, yellow and green segments of the lower bar indicate the fraction of residues that contain outliers for ≥ 3 , 2, 1 and 0 types of geometric quality criteria respectively. A grey segment represents the fraction of residues that are not modelled. The numeric value for each fraction is indicated below the corresponding segment, with a dot representing fractions $\leq 5\%$. The upper red bar (where present) indicates the fraction of residues that have poor fit to the electron density. The numeric value is given above the bar.

Mol	Chain	Length	Quality of chain
1	A	588	

The following table lists non-polymeric compounds, carbohydrate monomers and non-standard residues in protein, DNA, RNA chains that are outliers for geometric or electron-density-fit criteria:

Mol	Type	Chain	Res	Chirality	Geometry	Clashes	Electron density
2	ADP	A	589	-	-	X	X

Continued on next page...

Continued from previous page...

Mol	Type	Chain	Res	Chirality	Geometry	Clashes	Electron density
3	MPD	A	592	-	-	X	X

2 Entry composition [i](#)

There are 6 unique types of molecules in this entry. The entry contains 4408 atoms, of which 0 are hydrogens and 0 are deuteriums.

In the tables below, the ZeroOcc column contains the number of atoms modelled with zero occupancy, the AltConf column contains the number of residues with at least one atom in alternate conformation and the Trace column contains the number of residues modelled with at most 2 atoms.

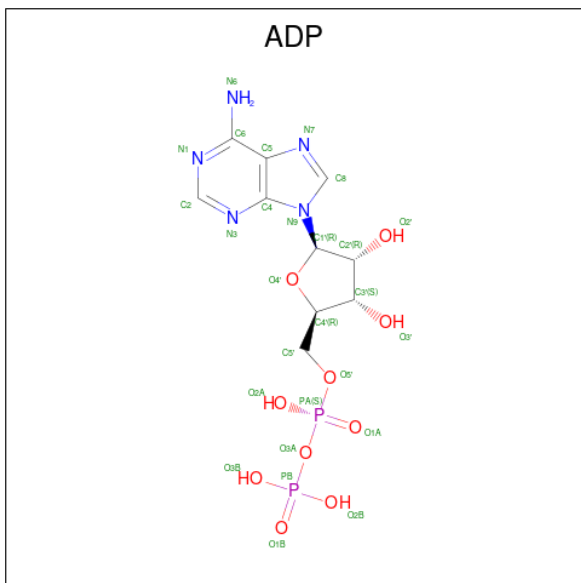
- Molecule 1 is a protein called A-TYPE ATP SYNTHASE CATALYTIC SUBUNIT A.

Mol	Chain	Residues	Atoms					ZeroOcc	AltConf	Trace
			Total	C	N	O	S			
1	A	512	4050	2592	689	753	16	0	0	0

There is a discrepancy between the modelled and reference sequences:

Chain	Residue	Modelled	Actual	Comment	Reference
A	79	ARG	GLY	engineered mutation	UNP O57728

- Molecule 2 is ADENOSINE-5'-DIPHOSPHATE (three-letter code: ADP) (formula: $C_{10}H_{15}N_5O_{10}P_2$).



Mol	Chain	Residues	Atoms					ZeroOcc	AltConf
			Total	C	N	O	P		
2	A	1	27	10	5	10	2	0	0

- Molecule 3 is (4S)-2-METHYL-2,4-PENTANEDIOL (three-letter code: MPD) (formula: $C_6H_{14}O_2$).



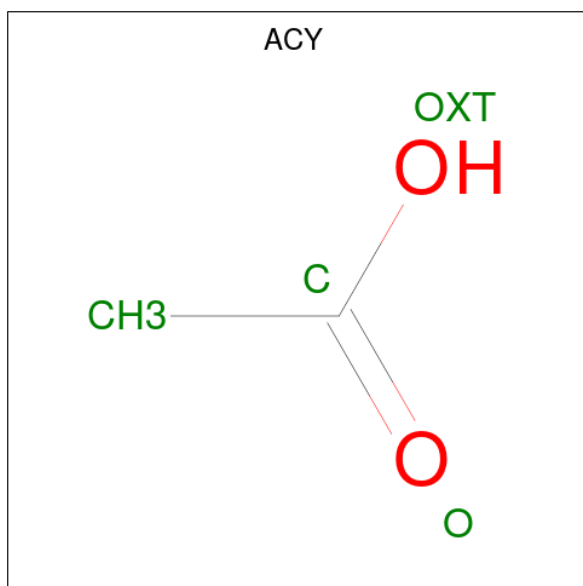
Mol	Chain	Residues	Atoms	ZeroOcc	AltConf
3	A	1	Total C O 8 6 2	0	0
3	A	1	Total C O 8 6 2	0	0
3	A	1	Total C O 8 6 2	0	0

- Molecule 4 is 2-AMINO-2-HYDROXYMETHYL-PROPANE-1,3-DIOL (three-letter code: TRS) (formula: $C_4H_{12}NO_3$).



Mol	Chain	Residues	Atoms				ZeroOcc	AltConf
			Total	C	N	O		
4	A	1	8	4	1	3	0	0

- Molecule 5 is ACETIC ACID (three-letter code: ACY) (formula: C₂H₄O₂).



Mol	Chain	Residues	Atoms			ZeroOcc	AltConf
			Total	C	O		
5	A	1	4	2	2	0	0

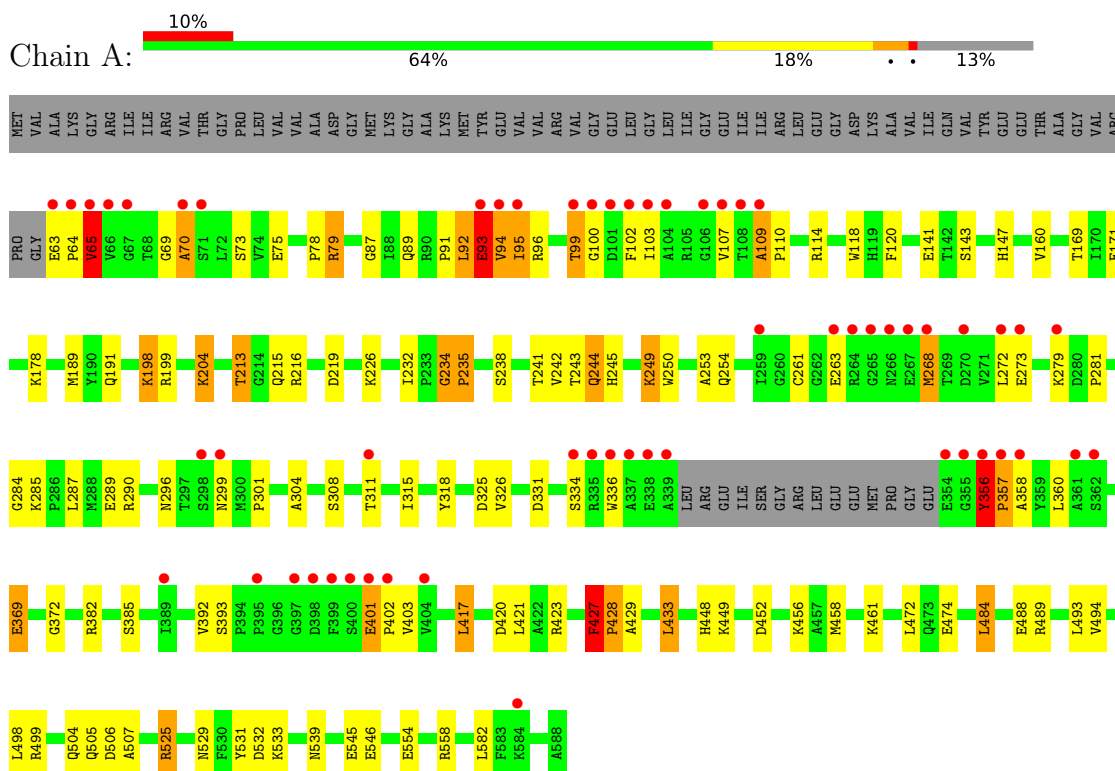
- Molecule 6 is water.

Mol	Chain	Residues	Atoms		ZeroOcc	AltConf
6	A	295	Total	O	0	0
			295	295		

3 Residue-property plots [i](#)

These plots are drawn for all protein, RNA, DNA and oligosaccharide chains in the entry. The first graphic for a chain summarises the proportions of the various outlier classes displayed in the second graphic. The second graphic shows the sequence view annotated by issues in geometry and electron density. Residues are color-coded according to the number of geometric quality criteria for which they contain at least one outlier: green = 0, yellow = 1, orange = 2 and red = 3 or more. A red dot above a residue indicates a poor fit to the electron density ($RSRZ > 2$). Stretches of 2 or more consecutive residues without any outlier are shown as a green connector. Residues present in the sample, but not in the model, are shown in grey.

- Molecule 1: A-TYPE ATP SYNTHASE CATALYTIC SUBUNIT A



4 Data and refinement statistics

Property	Value	Source
Space group	P 43 21 2	Depositor
Cell constants a, b, c, α , β , γ	128.47Å 128.47Å 104.99Å 90.00° 90.00° 90.00°	Depositor
Resolution (Å)	27.72 – 2.40 27.72 – 2.40	Depositor EDS
% Data completeness (in resolution range)	99.8 (27.72-2.40) 99.9 (27.72-2.40)	Depositor EDS
R_{merge}	0.05	Depositor
R_{sym}	(Not available)	Depositor
$\langle I/\sigma(I) \rangle$ ¹	5.30 (at 2.42Å)	Xtrriage
Refinement program	REFMAC	Depositor
R, R_{free}	0.225 , 0.258 0.230 , 0.245	Depositor DCC
R_{free} test set	1742 reflections (5.02%)	wwPDB-VP
Wilson B-factor (Å ²)	50.3	Xtrriage
Anisotropy	0.034	Xtrriage
Bulk solvent k_{sol} (e/Å ³), B_{sol} (Å ²)	0.32 , 73.8	EDS
L-test for twinning ²	$\langle L \rangle = 0.50$, $\langle L^2 \rangle = 0.34$	Xtrriage
Estimated twinning fraction	No twinning to report.	Xtrriage
F_o, F_c correlation	0.93	EDS
Total number of atoms	4408	wwPDB-VP
Average B, all atoms (Å ²)	57.0	wwPDB-VP

Xtrriage's analysis on translational NCS is as follows: *The largest off-origin peak in the Patterson function is 3.50% of the height of the origin peak. No significant pseudotranslation is detected.*

¹Intensities estimated from amplitudes.

²Theoretical values of $\langle |L| \rangle$, $\langle L^2 \rangle$ for acentric reflections are 0.5, 0.333 respectively for untwinned datasets, and 0.375, 0.2 for perfectly twinned datasets.

5 Model quality [i](#)

5.1 Standard geometry [i](#)

Bond lengths and bond angles in the following residue types are not validated in this section: ACY, MPD, TRS, ADP

The Z score for a bond length (or angle) is the number of standard deviations the observed value is removed from the expected value. A bond length (or angle) with $|Z| > 5$ is considered an outlier worth inspection. RMSZ is the root-mean-square of all Z scores of the bond lengths (or angles).

Mol	Chain	Bond lengths		Bond angles	
		RMSZ	# Z >5	RMSZ	# Z >5
1	A	0.62	0/4139	0.73	3/5609 (0.1%)

Chiral center outliers are detected by calculating the chiral volume of a chiral center and verifying if the center is modelled as a planar moiety or with the opposite hand. A planarity outlier is detected by checking planarity of atoms in a peptide group, atoms in a mainchain group or atoms of a sidechain that are expected to be planar.

Mol	Chain	#Chirality outliers	#Planarity outliers
1	A	0	5

There are no bond length outliers.

All (3) bond angle outliers are listed below:

Mol	Chain	Res	Type	Atoms	Z	Observed(°)	Ideal(°)
1	A	427	PHE	C-N-CD	-9.87	98.89	120.60
1	A	234	GLY	C-N-CD	-6.92	105.37	120.60
1	A	382	ARG	NE-CZ-NH2	-5.46	117.57	120.30

There are no chirality outliers.

All (5) planarity outliers are listed below:

Mol	Chain	Res	Type	Group
1	A	234	GLY	Peptide
1	A	356	TYR	Peptide
1	A	401	GLU	Peptide
1	A	427	PHE	Mainchain,Peptide

5.2 Too-close contacts [i](#)

In the following table, the Non-H and H(model) columns list the number of non-hydrogen atoms and hydrogen atoms in the chain respectively. The H(added) column lists the number of hydrogen atoms added and optimized by MolProbity. The Clashes column lists the number of clashes within the asymmetric unit, whereas Symm-Clashes lists symmetry-related clashes.

Mol	Chain	Non-H	H(model)	H(added)	Clashes	Symm-Clashes
1	A	4050	0	4098	138	0
2	A	27	0	12	36	0
3	A	24	0	42	9	0
4	A	8	0	12	0	0
5	A	4	0	3	0	0
6	A	295	0	0	14	0
All	All	4408	0	4167	144	0

The all-atom clashscore is defined as the number of clashes found per 1000 atoms (including hydrogen atoms). The all-atom clashscore for this structure is 17.

All (144) close contacts within the same asymmetric unit are listed below, sorted by their clash magnitude.

Atom-1	Atom-2	Interatomic distance (Å)	Clash overlap (Å)
1:A:507:ALA:H	2:A:589:ADP:N6	1.41	1.15
1:A:429:ALA:HB3	2:A:589:ADP:H5'1	1.32	1.11
2:A:589:ADP:C2'	2:A:589:ADP:N3	2.17	1.07
1:A:525:ARG:HH11	1:A:525:ARG:HG3	1.17	1.05
1:A:429:ALA:CB	2:A:589:ADP:H5'1	1.90	1.01
1:A:241:THR:HG22	2:A:589:ADP:O5'	1.61	0.99
1:A:507:ALA:N	2:A:589:ADP:HN62	1.61	0.98
1:A:429:ALA:H	2:A:589:ADP:H3'	1.27	0.98
1:A:261:CYS:HB3	1:A:296:ASN:HB2	1.41	0.98
1:A:241:THR:HA	2:A:589:ADP:H4'	1.49	0.95
2:A:589:ADP:N3	2:A:589:ADP:H2'	1.82	0.94
1:A:433:LEU:HD22	3:A:591:MPD:HM3	1.53	0.91
1:A:261:CYS:HB3	1:A:296:ASN:CB	2.00	0.90
1:A:458:MET:HE1	1:A:525:ARG:HG2	1.53	0.90
1:A:63:GLU:HB3	1:A:64:PRO:HD3	1.55	0.89
1:A:532:ASP:OD2	3:A:592:MPD:C1	2.22	0.88
1:A:75:GLU:H	1:A:89:GLN:HE22	1.20	0.88
2:A:589:ADP:N3	2:A:589:ADP:O2'	2.06	0.88
1:A:241:THR:HA	2:A:589:ADP:C4'	2.04	0.87
1:A:420:ASP:OD2	3:A:591:MPD:H51	1.75	0.86
1:A:532:ASP:OD2	3:A:592:MPD:H11	1.75	0.86

Continued on next page...

Continued from previous page...

Atom-1	Atom-2	Interatomic distance (Å)	Clash overlap (Å)
1:A:507:ALA:H	2:A:589:ADP:HN62	0.87	0.85
1:A:525:ARG:HH11	1:A:525:ARG:CG	1.89	0.85
1:A:216:ARG:H	1:A:505:GLN:HE22	1.24	0.84
1:A:241:THR:CA	2:A:589:ADP:H4'	2.08	0.83
1:A:525:ARG:HG3	1:A:525:ARG:NH1	1.94	0.82
1:A:507:ALA:N	2:A:589:ADP:N6	2.25	0.81
1:A:213:THR:HG23	1:A:215:GLN:HG2	1.63	0.81
1:A:213:THR:HG22	1:A:215:GLN:H	1.46	0.80
1:A:147:HIS:HE1	1:A:318:TYR:OH	1.66	0.77
1:A:241:THR:CB	2:A:589:ADP:H4'	2.15	0.75
1:A:448:HIS:HE1	1:A:456:LYS:H	1.35	0.74
1:A:241:THR:OG1	1:A:244:GLN:NE2	2.21	0.73
1:A:64:PRO:O	1:A:65:VAL:HB	1.89	0.72
1:A:120:PHE:HB2	1:A:189:MET:CE	2.19	0.72
1:A:87:GLY:HA3	1:A:304:ALA:O	1.89	0.72
1:A:461:LYS:NZ	3:A:592:MPD:H12	2.05	0.71
1:A:261:CYS:CB	1:A:296:ASN:HB2	2.19	0.70
1:A:356:TYR:HB3	1:A:357:PRO:CD	2.21	0.70
1:A:403:VAL:HG21	6:A:875:HOH:O	1.91	0.70
1:A:525:ARG:CG	1:A:525:ARG:NH1	2.50	0.69
1:A:241:THR:HG23	6:A:781:HOH:O	1.90	0.69
1:A:433:LEU:CD2	3:A:591:MPD:HM3	2.22	0.69
1:A:244:GLN:NE2	1:A:244:GLN:H	1.90	0.69
1:A:243:THR:HG23	2:A:589:ADP:O3'	1.93	0.67
1:A:244:GLN:H	1:A:244:GLN:HE21	1.43	0.66
1:A:254:GLN:HE22	1:A:325:ASP:H	1.45	0.65
1:A:429:ALA:HB3	2:A:589:ADP:C5'	2.19	0.63
1:A:216:ARG:H	1:A:505:GLN:NE2	1.94	0.63
1:A:242:VAL:HG22	2:A:589:ADP:C4	2.33	0.63
1:A:241:THR:HG22	2:A:589:ADP:PA	2.39	0.62
1:A:429:ALA:HB2	2:A:589:ADP:H5'1	1.81	0.62
1:A:241:THR:HA	2:A:589:ADP:H1'	1.81	0.62
1:A:69:GLY:HA2	1:A:103:ILE:HA	1.82	0.62
1:A:461:LYS:HZ3	3:A:592:MPD:H12	1.65	0.62
1:A:261:CYS:CB	1:A:296:ASN:CB	2.75	0.61
1:A:147:HIS:CE1	1:A:318:TYR:OH	2.51	0.61
1:A:241:THR:HA	2:A:589:ADP:C1'	2.30	0.61
1:A:499:ARG:NH2	6:A:633:HOH:O	2.33	0.61
1:A:191:GLN:OE1	1:A:199:ARG:NH2	2.33	0.60
1:A:254:GLN:NE2	1:A:325:ASP:H	1.99	0.60
1:A:458:MET:HE1	1:A:525:ARG:CG	2.29	0.60

Continued on next page...

Continued from previous page...

Atom-1	Atom-2	Interatomic distance (Å)	Clash overlap (Å)
1:A:242:VAL:N	2:A:589:ADP:H1'	2.17	0.60
1:A:532:ASP:OD2	3:A:592:MPD:H13	2.02	0.60
1:A:279:LYS:HD2	1:A:284:GLY:O	2.02	0.59
1:A:472:LEU:HD21	1:A:488:GLU:HG2	1.84	0.59
1:A:96:ARG:HA	1:A:301:PRO:HG3	1.85	0.59
1:A:241:THR:HB	2:A:589:ADP:H4'	1.84	0.58
1:A:245:HIS:O	1:A:249:LYS:HG2	2.02	0.58
1:A:494:VAL:HG11	1:A:531:TYR:HB2	1.85	0.58
1:A:506:ASP:HA	2:A:589:ADP:HN62	1.69	0.58
1:A:360:LEU:H	1:A:360:LEU:HD12	1.69	0.58
1:A:458:MET:CE	1:A:525:ARG:HA	2.35	0.56
1:A:75:GLU:OE1	1:A:114:ARG:NH2	2.38	0.56
1:A:253:ALA:O	1:A:290:ARG:NH2	2.38	0.56
1:A:120:PHE:HB2	1:A:189:MET:HE2	1.87	0.56
1:A:91:PRO:HD2	1:A:109:ALA:HB1	1.86	0.56
1:A:213:THR:CG2	1:A:215:GLN:H	2.19	0.55
1:A:241:THR:HA	2:A:589:ADP:O4'	2.06	0.55
1:A:100:GLY:C	1:A:102:PHE:H	2.10	0.55
1:A:242:VAL:HA	1:A:245:HIS:HD2	1.69	0.55
1:A:63:GLU:HB3	1:A:64:PRO:CD	2.34	0.54
1:A:78:PRO:O	1:A:79:ARG:HB2	2.08	0.54
1:A:285:LYS:HG2	6:A:826:HOH:O	2.09	0.53
1:A:369:GLU:HG2	6:A:879:HOH:O	2.09	0.53
1:A:458:MET:HE1	1:A:525:ARG:HA	1.93	0.51
1:A:461:LYS:HZ1	3:A:592:MPD:H12	1.75	0.51
1:A:242:VAL:H	2:A:589:ADP:H1'	1.76	0.51
2:A:589:ADP:PB	6:A:845:HOH:O	2.69	0.51
1:A:216:ARG:N	1:A:505:GLN:HE22	2.03	0.50
1:A:429:ALA:N	2:A:589:ADP:H3'	2.11	0.50
1:A:428:PRO:HA	2:A:589:ADP:H2'	1.93	0.49
2:A:589:ADP:N1	6:A:858:HOH:O	2.34	0.49
1:A:141:GLU:OE1	1:A:147:HIS:HD2	1.94	0.49
1:A:204:LYS:HD2	1:A:372:GLY:HA3	1.94	0.49
1:A:79:ARG:HG2	1:A:118:TRP:CZ2	2.48	0.49
1:A:94:VAL:HG12	1:A:95:ILE:H	1.77	0.49
1:A:160:VAL:HG11	1:A:178:LYS:HE3	1.95	0.49
1:A:69:GLY:O	1:A:70:ALA:HB3	2.13	0.48
1:A:232:ILE:HG12	1:A:417:LEU:HD22	1.95	0.48
1:A:311:THR:O	1:A:315:ILE:HG13	2.13	0.48
1:A:226:LYS:NZ	6:A:787:HOH:O	2.42	0.48
1:A:506:ASP:HA	2:A:589:ADP:N6	2.28	0.48

Continued on next page...

Continued from previous page...

Atom-1	Atom-2	Interatomic distance (Å)	Clash overlap (Å)
1:A:261:CYS:H	1:A:331:ASP:HB3	1.78	0.47
1:A:63:GLU:CB	1:A:64:PRO:HD3	2.38	0.47
1:A:198:LYS:HG3	6:A:753:HOH:O	2.15	0.47
1:A:245:HIS:NE2	6:A:668:HOH:O	2.34	0.47
1:A:241:THR:CA	2:A:589:ADP:H1'	2.45	0.47
1:A:235:PRO:HB2	1:A:238:SER:HB2	1.96	0.46
1:A:545:GLU:CD	1:A:545:GLU:H	2.17	0.46
1:A:114:ARG:HD2	1:A:171:GLU:HG2	1.96	0.46
1:A:356:TYR:HB3	1:A:357:PRO:HD2	1.97	0.46
1:A:261:CYS:CB	1:A:296:ASN:HB3	2.44	0.46
1:A:87:GLY:HA2	1:A:308:SER:HB3	1.98	0.45
1:A:213:THR:HG23	1:A:215:GLN:CG	2.40	0.45
1:A:546:GLU:HG3	1:A:582:LEU:HD11	1.99	0.45
1:A:94:VAL:HG12	1:A:95:ILE:N	2.31	0.45
1:A:507:ALA:HB2	2:A:589:ADP:N1	2.32	0.45
1:A:458:MET:HE2	1:A:525:ARG:HA	1.99	0.45
1:A:458:MET:CE	1:A:525:ARG:HG2	2.36	0.45
1:A:554:GLU:OE2	1:A:558:ARG:NH2	2.30	0.45
1:A:484:LEU:HB3	1:A:489:ARG:HG3	1.98	0.45
2:A:589:ADP:O2'	2:A:589:ADP:C4	2.51	0.44
1:A:93:GLU:O	1:A:93:GLU:HG2	2.17	0.44
1:A:263:GLU:O	1:A:268:MET:SD	2.76	0.43
1:A:114:ARG:NH1	1:A:171:GLU:OE2	2.43	0.43
1:A:356:TYR:O	1:A:358:ALA:N	2.51	0.43
1:A:143:SER:OG	1:A:289:GLU:OE2	2.35	0.43
1:A:423:ARG:NH2	6:A:830:HOH:O	2.52	0.43
1:A:498:LEU:HD23	1:A:498:LEU:HA	1.90	0.43
1:A:506:ASP:CA	2:A:589:ADP:HN62	2.30	0.42
1:A:213:THR:HB	1:A:219:ASP:OD1	2.19	0.42
1:A:427:PHE:O	1:A:504:GLN:HA	2.19	0.42
1:A:529:ASN:O	1:A:533:LYS:HG2	2.19	0.42
1:A:325:ASP:OD1	1:A:385:SER:HB2	2.18	0.42
1:A:114:ARG:O	1:A:169:THR:HB	2.20	0.42
1:A:143:SER:HB3	6:A:852:HOH:O	2.20	0.42
1:A:250:TRP:CH2	1:A:281:PRO:HB2	2.55	0.41
1:A:272:LEU:HG	1:A:273:GLU:HG2	2.03	0.41
1:A:452:ASP:OD2	1:A:525:ARG:NH1	2.43	0.41
1:A:79:ARG:HG2	1:A:118:TRP:CH2	2.56	0.40
1:A:493:LEU:HD22	6:A:630:HOH:O	2.19	0.40
1:A:99:THR:HB	1:A:100:GLY:H	1.66	0.40
1:A:241:THR:CG2	6:A:781:HOH:O	2.58	0.40

There are no symmetry-related clashes.

5.3 Torsion angles [i](#)

5.3.1 Protein backbone [i](#)

In the following table, the Percentiles column shows the percent Ramachandran outliers of the chain as a percentile score with respect to all X-ray entries followed by that with respect to entries of similar resolution.

The Analysed column shows the number of residues for which the backbone conformation was analysed, and the total number of residues.

Mol	Chain	Analysed	Favoured	Allowed	Outliers	Percentiles
1	A	508/588 (86%)	461 (91%)	30 (6%)	17 (3%)	4 3

All (17) Ramachandran outliers are listed below:

Mol	Chain	Res	Type
1	A	65	VAL
1	A	92	LEU
1	A	235	PRO
1	A	356	TYR
1	A	357	PRO
1	A	401	GLU
1	A	402	PRO
1	A	428	PRO
1	A	93	GLU
1	A	79	ARG
1	A	70	ALA
1	A	94	VAL
1	A	95	ILE
1	A	268	MET
1	A	334	SER
1	A	110	PRO
1	A	109	ALA

5.3.2 Protein sidechains [i](#)

In the following table, the Percentiles column shows the percent sidechain outliers of the chain as a percentile score with respect to all X-ray entries followed by that with respect to entries of similar resolution.

The Analysed column shows the number of residues for which the sidechain conformation was

analysed, and the total number of residues.

Mol	Chain	Analysed	Rotameric	Outliers	Percentiles	
1	A	434/493 (88%)	407 (94%)	27 (6%)	18	29

All (27) residues with a non-rotameric sidechain are listed below:

Mol	Chain	Res	Type
1	A	65	VAL
1	A	73	SER
1	A	92	LEU
1	A	93	GLU
1	A	99	THR
1	A	107	VAL
1	A	198	LYS
1	A	204	LYS
1	A	213	THR
1	A	244	GLN
1	A	249	LYS
1	A	287	LEU
1	A	299	ASN
1	A	326	VAL
1	A	336	TRP
1	A	356	TYR
1	A	369	GLU
1	A	392	VAL
1	A	393	SER
1	A	417	LEU
1	A	421	LEU
1	A	433	LEU
1	A	449	LYS
1	A	474	GLU
1	A	484	LEU
1	A	525	ARG
1	A	539	ASN

Sometimes sidechains can be flipped to improve hydrogen bonding and reduce clashes. All (9) such sidechains are listed below:

Mol	Chain	Res	Type
1	A	89	GLN
1	A	147	HIS
1	A	244	GLN
1	A	254	GLN

Continued on next page...

Continued from previous page...

Mol	Chain	Res	Type
1	A	299	ASN
1	A	426	HIS
1	A	448	HIS
1	A	504	GLN
1	A	505	GLN

5.3.3 RNA [i](#)

There are no RNA molecules in this entry.

5.4 Non-standard residues in protein, DNA, RNA chains [i](#)

There are no non-standard protein/DNA/RNA residues in this entry.

5.5 Carbohydrates [i](#)

There are no monosaccharides in this entry.

5.6 Ligand geometry [i](#)

6 ligands are modelled in this entry.

In the following table, the Counts columns list the number of bonds (or angles) for which Mogul statistics could be retrieved, the number of bonds (or angles) that are observed in the model and the number of bonds (or angles) that are defined in the Chemical Component Dictionary. The Link column lists molecule types, if any, to which the group is linked. The Z score for a bond length (or angle) is the number of standard deviations the observed value is removed from the expected value. A bond length (or angle) with $|Z| > 2$ is considered an outlier worth inspection. RMSZ is the root-mean-square of all Z scores of the bond lengths (or angles).

Mol	Type	Chain	Res	Link	Bond lengths			Bond angles		
					Counts	RMSZ	$\# Z > 2$	Counts	RMSZ	$\# Z > 2$
3	MPD	A	590	-	7,7,7	0.25	0	9,10,10	0.79	0
5	ACY	A	594	-	3,3,3	0.73	0	3,3,3	0.94	0
4	TRS	A	593	-	7,7,7	0.38	0	9,9,9	0.42	0
3	MPD	A	591	-	7,7,7	0.34	0	9,10,10	0.35	0
3	MPD	A	592	-	7,7,7	0.33	0	9,10,10	0.35	0
2	ADP	A	589	-	24,29,29	1.03	2 (8%)	29,45,45	2.28	8 (27%)

In the following table, the Chirals column lists the number of chiral outliers, the number of chiral

centers analysed, the number of these observed in the model and the number defined in the Chemical Component Dictionary. Similar counts are reported in the Torsion and Rings columns. '-' means no outliers of that kind were identified.

Mol	Type	Chain	Res	Link	Chirals	Torsions	Rings
3	MPD	A	590	-	-	2/5/5/5	-
4	TRS	A	593	-	-	1/9/9/9	-
3	MPD	A	591	-	-	0/5/5/5	-
3	MPD	A	592	-	-	0/5/5/5	-
2	ADP	A	589	-	-	5/12/32/32	0/3/3/3

All (2) bond length outliers are listed below:

Mol	Chain	Res	Type	Atoms	Z	Observed(Å)	Ideal(Å)
2	A	589	ADP	C2'-C1'	-2.21	1.50	1.53
2	A	589	ADP	C5-C4	2.15	1.46	1.40

All (8) bond angle outliers are listed below:

Mol	Chain	Res	Type	Atoms	Z	Observed(°)	Ideal(°)
2	A	589	ADP	O2'-C2'-C1'	-6.19	87.98	110.85
2	A	589	ADP	C1'-N9-C4	-5.04	117.79	126.64
2	A	589	ADP	PA-O3A-PB	-4.61	117.00	132.83
2	A	589	ADP	C3'-C2'-C1'	3.78	106.67	100.98
2	A	589	ADP	N3-C2-N1	-3.38	123.39	128.68
2	A	589	ADP	O4'-C1'-C2'	-2.86	102.74	106.93
2	A	589	ADP	N6-C6-N1	2.13	122.98	118.57
2	A	589	ADP	C4-C5-N7	-2.09	107.22	109.40

There are no chirality outliers.

All (8) torsion outliers are listed below:

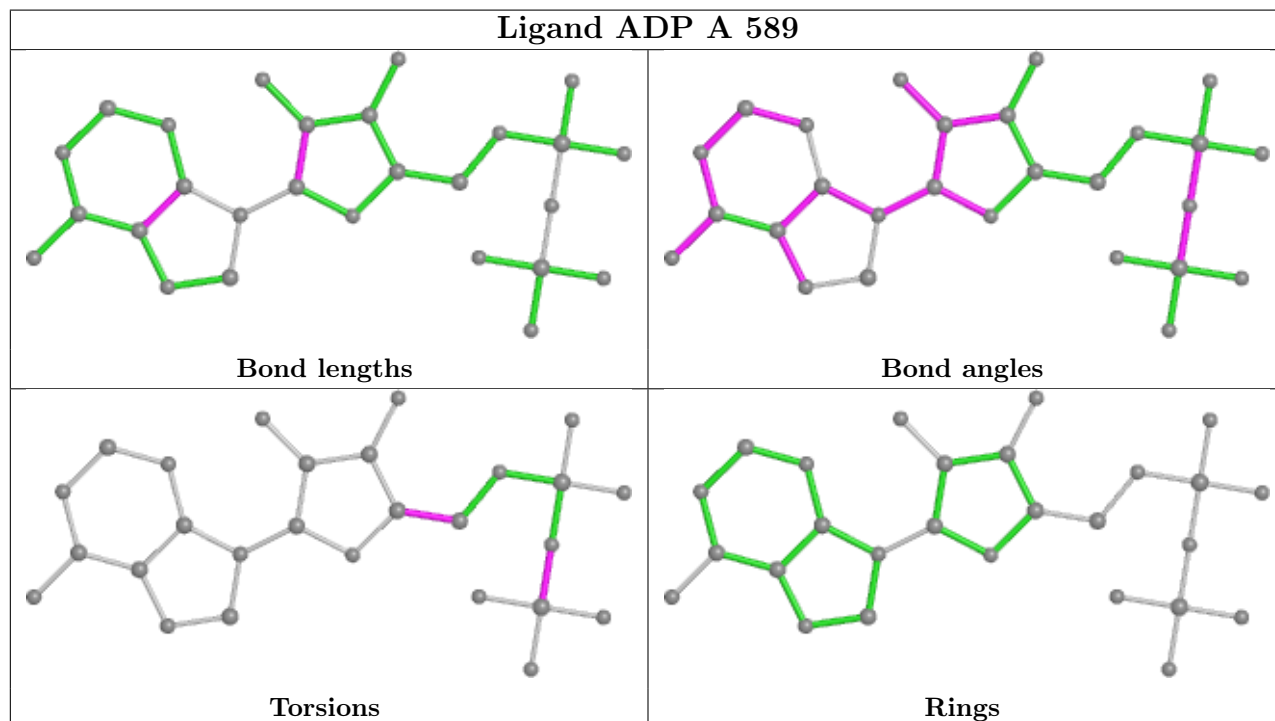
Mol	Chain	Res	Type	Atoms
2	A	589	ADP	PA-O3A-PB-O3B
2	A	589	ADP	O4'-C4'-C5'-O5'
2	A	589	ADP	C3'-C4'-C5'-O5'
4	A	593	TRS	N-C-C1-O1
3	A	590	MPD	C1-C2-C3-C4
3	A	590	MPD	O2-C2-C3-C4
2	A	589	ADP	PA-O3A-PB-O1B
2	A	589	ADP	PA-O3A-PB-O2B

There are no ring outliers.

3 monomers are involved in 45 short contacts:

Mol	Chain	Res	Type	Clashes	Symm-Clashes
3	A	591	MPD	3	0
3	A	592	MPD	6	0
2	A	589	ADP	36	0

The following is a two-dimensional graphical depiction of Mogul quality analysis of bond lengths, bond angles, torsion angles, and ring geometry for all instances of the Ligand of Interest. In addition, ligands with molecular weight > 250 and outliers as shown on the validation Tables will also be included. For torsion angles, if less than 5% of the Mogul distribution of torsion angles is within 10 degrees of the torsion angle in question, then that torsion angle is considered an outlier. Any bond that is central to one or more torsion angles identified as an outlier by Mogul will be highlighted in the graph. For rings, the root-mean-square deviation (RMSD) between the ring in question and similar rings identified by Mogul is calculated over all ring torsion angles. If the average RMSD is greater than 60 degrees and the minimal RMSD between the ring in question and any Mogul-identified rings is also greater than 60 degrees, then that ring is considered an outlier. The outliers are highlighted in purple. The color gray indicates Mogul did not find sufficient equivalents in the CSD to analyse the geometry.



5.7 Other polymers [i](#)

There are no such residues in this entry.

5.8 Polymer linkage issues

There are no chain breaks in this entry.

6 Fit of model and data

6.1 Protein, DNA and RNA chains

In the following table, the column labelled ‘#RSRZ> 2’ contains the number (and percentage) of RSRZ outliers, followed by percent RSRZ outliers for the chain as percentile scores relative to all X-ray entries and entries of similar resolution. The OWAB column contains the minimum, median, 95th percentile and maximum values of the occupancy-weighted average B-factor per residue. The column labelled ‘Q< 0.9’ lists the number of (and percentage) of residues with an average occupancy less than 0.9.

Mol	Chain	Analysed	<RSRZ>	#RSRZ>2	OWAB(Å ²)	Q<0.9
1	A	512/588 (87%)	0.38	57 (11%) 5 4	28, 53, 104, 114	0

All (57) RSRZ outliers are listed below:

Mol	Chain	Res	Type	RSRZ
1	A	107	VAL	11.7
1	A	95	ILE	11.0
1	A	336	TRP	8.9
1	A	94	VAL	6.3
1	A	264	ARG	6.2
1	A	108	THR	5.8
1	A	102	PHE	5.2
1	A	361	ALA	4.6
1	A	395	PRO	4.6
1	A	356	TYR	4.6
1	A	106	GLY	4.5
1	A	100	GLY	4.3
1	A	66	VAL	4.3
1	A	266	ASN	4.3
1	A	357	PRO	4.2
1	A	65	VAL	4.2
1	A	263	GLU	4.1
1	A	99	THR	4.0
1	A	70	ALA	4.0
1	A	64	PRO	4.0
1	A	273	GLU	3.9
1	A	355	GLY	3.8
1	A	103	ILE	3.5
1	A	404	VAL	3.4
1	A	299	ASN	3.3
1	A	267	GLU	3.3
1	A	398	ASP	3.3

Continued on next page...

Continued from previous page...

Mol	Chain	Res	Type	RSRZ
1	A	397	GLY	3.2
1	A	265	GLY	3.2
1	A	337	ALA	3.1
1	A	268	MET	3.1
1	A	272	LEU	3.0
1	A	402	PRO	2.9
1	A	354	GLU	2.9
1	A	101	ASP	2.8
1	A	339	ALA	2.8
1	A	338	GLU	2.8
1	A	270	ASP	2.7
1	A	93	GLU	2.6
1	A	400	SER	2.5
1	A	104	ALA	2.4
1	A	334	SER	2.4
1	A	67	GLY	2.4
1	A	335	ARG	2.4
1	A	63	GLU	2.4
1	A	109	ALA	2.4
1	A	358	ALA	2.4
1	A	399	PHE	2.3
1	A	298	SER	2.2
1	A	311	THR	2.2
1	A	362	SER	2.2
1	A	401	GLU	2.2
1	A	389	ILE	2.1
1	A	71	SER	2.1
1	A	259	ILE	2.1
1	A	279	LYS	2.1
1	A	584	LYS	2.0

6.2 Non-standard residues in protein, DNA, RNA chains [\(i\)](#)

There are no non-standard protein/DNA/RNA residues in this entry.

6.3 Carbohydrates [\(i\)](#)

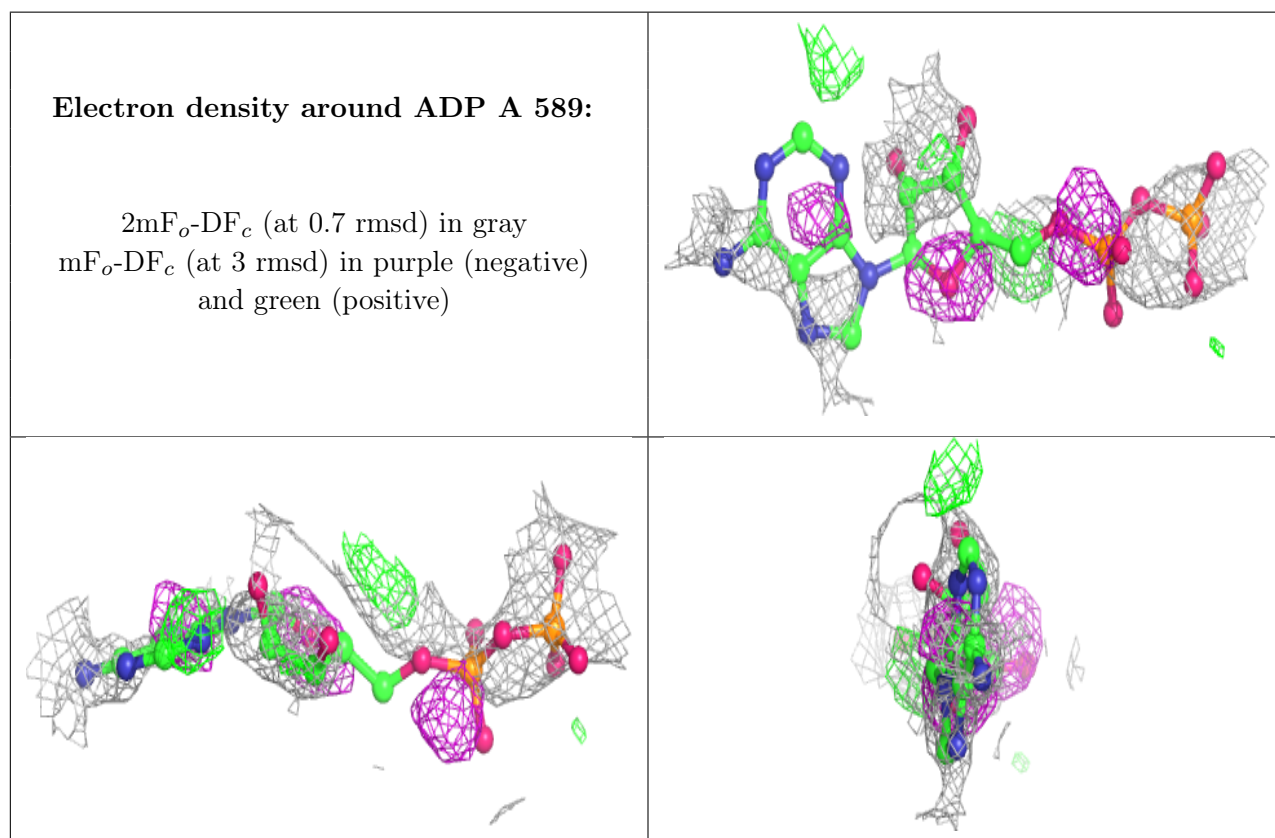
There are no monosaccharides in this entry.

6.4 Ligands [i](#)

In the following table, the Atoms column lists the number of modelled atoms in the group and the number defined in the chemical component dictionary. The B-factors column lists the minimum, median, 95th percentile and maximum values of B factors of atoms in the group. The column labelled 'Q< 0.9' lists the number of atoms with occupancy less than 0.9.

Mol	Type	Chain	Res	Atoms	RSCC	RSR	B-factors(Å ²)	Q<0.9
2	ADP	A	589	27/27	0.58	0.55	44,50,67,67	27
3	MPD	A	592	8/8	0.67	0.55	10,10,10,10	0
4	TRS	A	593	8/8	0.84	0.18	90,91,91,91	0
3	MPD	A	591	8/8	0.85	0.55	10,10,10,10	0
3	MPD	A	590	8/8	0.92	0.22	71,72,74,74	0
5	ACY	A	594	4/4	0.95	0.12	90,90,91,91	0

The following is a graphical depiction of the model fit to experimental electron density of all instances of the Ligand of Interest. In addition, ligands with molecular weight > 250 and outliers as shown on the geometry validation Tables will also be included. Each fit is shown from different orientation to approximate a three-dimensional view.



6.5 Other polymers [i](#)

There are no such residues in this entry.