



# Full wwPDB EM Validation Report ⓘ

May 21, 2024 – 10:07 AM JST

PDB ID : 8IBU  
EMDB ID : EMD-35345  
Title : Cryo-EM structure of the erythromycin-bound motilin receptor-Gq protein complex  
Authors : You, C.; Jiang, Y.; Xu, H.E.; Xu, Y.  
Deposited on : 2023-02-10  
Resolution : 3.51 Å(reported)

This is a Full wwPDB EM Validation Report for a publicly released PDB entry.

We welcome your comments at [validation@mail.wwpdb.org](mailto:validation@mail.wwpdb.org)

A user guide is available at

<https://www.wwpdb.org/validation/2017/EMValidationReportHelp>

with specific help available everywhere you see the ⓘ symbol.

The types of validation reports are described at

<http://www.wwpdb.org/validation/2017/FAQs#types>.

---

The following versions of software and data (see [references ⓘ](#)) were used in the production of this report:

EMDB validation analysis : **FAILED**  
Mogul : 1.8.5 (274361), CSD as541be (2020)  
MolProbity : 4.02b-467  
buster-report : 1.1.7 (2018)  
Percentile statistics : 20191225.v01 (using entries in the PDB archive December 25th 2019)  
MapQ : **FAILED**  
Ideal geometry (proteins) : Engh & Huber (2001)  
Ideal geometry (DNA, RNA) : Parkinson et al. (1996)  
Validation Pipeline (wwPDB-VP) : 2.36.2

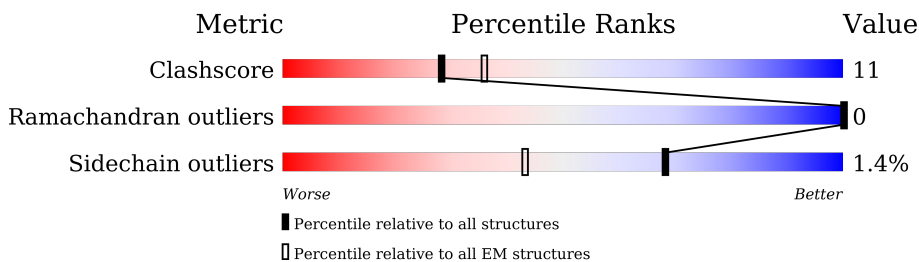
# 1 Overall quality at a glance

The following experimental techniques were used to determine the structure:

*ELECTRON MICROSCOPY*

The reported resolution of this entry is 3.51 Å.

Percentile scores (ranging between 0-100) for global validation metrics of the entry are shown in the following graphic. The table shows the number of entries on which the scores are based.



Metric	Whole archive (#Entries)	EM structures (#Entries)
Clashscore	158937	4297
Ramachandran outliers	154571	4023
Sidechain outliers	154315	3826

The table below summarises the geometric issues observed across the polymeric chains and their fit to the map. The red, orange, yellow and green segments of the bar indicate the fraction of residues that contain outliers for  $\geq 3$ , 2, 1 and 0 types of geometric quality criteria respectively. A grey segment represents the fraction of residues that are not modelled. The numeric value for each fraction is indicated below the corresponding segment, with a dot representing fractions  $\leq 5\%$ .

Mol	Chain	Length	Quality of chain
1	A	361	
2	B	371	
3	E	247	
4	G	70	
5	R	741	

The following table lists non-polymeric compounds, carbohydrate monomers and non-standard residues in protein, DNA, RNA chains that are outliers for geometric or electron-density-fit criteria:

Mol	Type	Chain	Res	Chirality	Geometry	Clashes	Electron density
6	ERY	R	601	-	-	X	-

## 2 Entry composition

There are 6 unique types of molecules in this entry. The entry contains 8970 atoms, of which 67 are hydrogens and 0 are deuteriums.

In the tables below, the AltConf column contains the number of residues with at least one atom in alternate conformation and the Trace column contains the number of residues modelled with at most 2 atoms.

- Molecule 1 is a protein called Guanine nucleotide-binding protein G(q) subunit alpha.

Mol	Chain	Residues	Atoms					AltConf	Trace
			Total	C	N	O	S		
1	A	232	1908	1207	338	355	8	0	0

- Molecule 2 is a protein called Guanine nucleotide-binding protein G(I)/G(S)/G(T) subunit beta-1.

Mol	Chain	Residues	Atoms					AltConf	Trace
			Total	C	N	O	S		
2	B	338	2591	1597	467	506	21	0	0

There are 32 discrepancies between the modelled and reference sequences:

Chain	Residue	Modelled	Actual	Comment	Reference
B	1	MET	-	initiating methionine	UNP P62873
B	2	GLY	-	expression tag	UNP P62873
B	3	SER	-	expression tag	UNP P62873
B	4	LEU	-	expression tag	UNP P62873
B	5	LEU	-	expression tag	UNP P62873
B	6	GLN	-	expression tag	UNP P62873
B	346	GLY	-	expression tag	UNP P62873
B	347	SER	-	expression tag	UNP P62873
B	348	SER	-	expression tag	UNP P62873
B	349	GLY	-	expression tag	UNP P62873
B	350	GLY	-	expression tag	UNP P62873
B	351	GLY	-	expression tag	UNP P62873
B	352	GLY	-	expression tag	UNP P62873
B	353	SER	-	expression tag	UNP P62873
B	354	GLY	-	expression tag	UNP P62873
B	355	GLY	-	expression tag	UNP P62873
B	356	GLY	-	expression tag	UNP P62873
B	357	GLY	-	expression tag	UNP P62873
B	358	SER	-	expression tag	UNP P62873
B	359	SER	-	expression tag	UNP P62873

*Continued on next page...*

Continued from previous page...

Chain	Residue	Modelled	Actual	Comment	Reference
B	360	GLY	-	expression tag	UNP P62873
B	361	VAL	-	expression tag	UNP P62873
B	362	SER	-	expression tag	UNP P62873
B	363	GLY	-	expression tag	UNP P62873
B	364	TRP	-	expression tag	UNP P62873
B	365	ARG	-	expression tag	UNP P62873
B	366	LEU	-	expression tag	UNP P62873
B	367	PHE	-	expression tag	UNP P62873
B	368	LYS	-	expression tag	UNP P62873
B	369	LYS	-	expression tag	UNP P62873
B	370	ILE	-	expression tag	UNP P62873
B	371	SER	-	expression tag	UNP P62873

- Molecule 3 is a protein called scFv16.

Mol	Chain	Residues	Atoms					AltConf	Trace
			Total	C	N	O	S		
3	E	230	1768	1123	293	343	9	0	0

- Molecule 4 is a protein called Guanine nucleotide-binding protein G(I)/G(S)/G(O) subunit gamma-2.

Mol	Chain	Residues	Atoms					AltConf	Trace
			Total	C	N	O	S		
4	G	54	407	253	71	80	3	0	0

- Molecule 5 is a protein called Soluble cytochrome b562,Motilin receptor,Fusion tag.

Mol	Chain	Residues	Atoms					AltConf	Trace
			Total	C	N	O	S		
5	R	273	2178	1447	368	347	16	0	0

There are 53 discrepancies between the modelled and reference sequences:

Chain	Residue	Modelled	Actual	Comment	Reference
R	-155	MET	-	initiating methionine	UNP P0ABE7
R	-154	LYS	-	expression tag	UNP P0ABE7
R	-153	THR	-	expression tag	UNP P0ABE7
R	-152	ILE	-	expression tag	UNP P0ABE7
R	-151	ILE	-	expression tag	UNP P0ABE7
R	-150	ALA	-	expression tag	UNP P0ABE7
R	-149	LEU	-	expression tag	UNP P0ABE7

Continued on next page...

*Continued from previous page...*

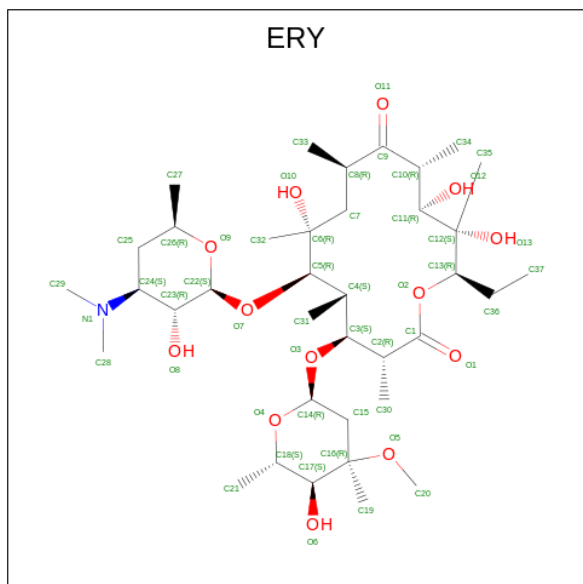
Chain	Residue	Modelled	Actual	Comment	Reference
R	-148	SER	-	expression tag	UNP P0ABE7
R	-147	TYR	-	expression tag	UNP P0ABE7
R	-146	ILE	-	expression tag	UNP P0ABE7
R	-145	PHE	-	expression tag	UNP P0ABE7
R	-144	CYS	-	expression tag	UNP P0ABE7
R	-143	LEU	-	expression tag	UNP P0ABE7
R	-142	VAL	-	expression tag	UNP P0ABE7
R	-141	PHE	-	expression tag	UNP P0ABE7
R	-140	ALA	-	expression tag	UNP P0ABE7
R	-139	ASP	-	expression tag	UNP P0ABE7
R	-138	TYR	-	expression tag	UNP P0ABE7
R	-137	LYS	-	expression tag	UNP P0ABE7
R	-136	ASP	-	expression tag	UNP P0ABE7
R	-135	ASP	-	expression tag	UNP P0ABE7
R	-134	ASP	-	expression tag	UNP P0ABE7
R	-133	ASP	-	expression tag	UNP P0ABE7
R	-132	ALA	-	expression tag	UNP P0ABE7
R	-131	LYS	-	expression tag	UNP P0ABE7
R	-130	LEU	-	expression tag	UNP P0ABE7
R	-129	GLN	-	expression tag	UNP P0ABE7
R	-128	THR	-	expression tag	UNP P0ABE7
R	-127	MET	-	expression tag	UNP P0ABE7
R	-126	HIS	-	expression tag	UNP P0ABE7
R	-125	HIS	-	expression tag	UNP P0ABE7
R	-124	HIS	-	expression tag	UNP P0ABE7
R	-123	HIS	-	expression tag	UNP P0ABE7
R	-122	HIS	-	expression tag	UNP P0ABE7
R	-121	HIS	-	expression tag	UNP P0ABE7
R	-120	HIS	-	expression tag	UNP P0ABE7
R	-119	HIS	-	expression tag	UNP P0ABE7
R	-118	HIS	-	expression tag	UNP P0ABE7
R	-117	HIS	-	expression tag	UNP P0ABE7
R	-110	TRP	MET	conflict	UNP P0ABE7
R	-15	ILE	HIS	conflict	UNP P0ABE7
R	-11	LEU	-	linker	UNP P0ABE7
R	-10	ALA	-	linker	UNP P0ABE7
R	-9	SER	-	linker	UNP P0ABE7
R	-8	GLU	-	linker	UNP P0ABE7
R	-7	ASN	-	linker	UNP P0ABE7
R	-6	LEU	-	linker	UNP P0ABE7
R	-5	TYR	-	linker	UNP P0ABE7
R	-4	PHE	-	linker	UNP P0ABE7

*Continued on next page...*

Continued from previous page...

Chain	Residue	Modelled	Actual	Comment	Reference
R	-3	GLN	-	linker	UNP P0ABE7
R	-2	GLY	-	linker	UNP P0ABE7
R	-1	GLY	-	linker	UNP P0ABE7
R	0	THR	-	linker	UNP P0ABE7

- Molecule 6 is ERYTHROMYCIN A (three-letter code: ERY) (formula:  $C_{37}H_{67}NO_{13}$ ) (labeled as "Ligand of Interest" by depositor).

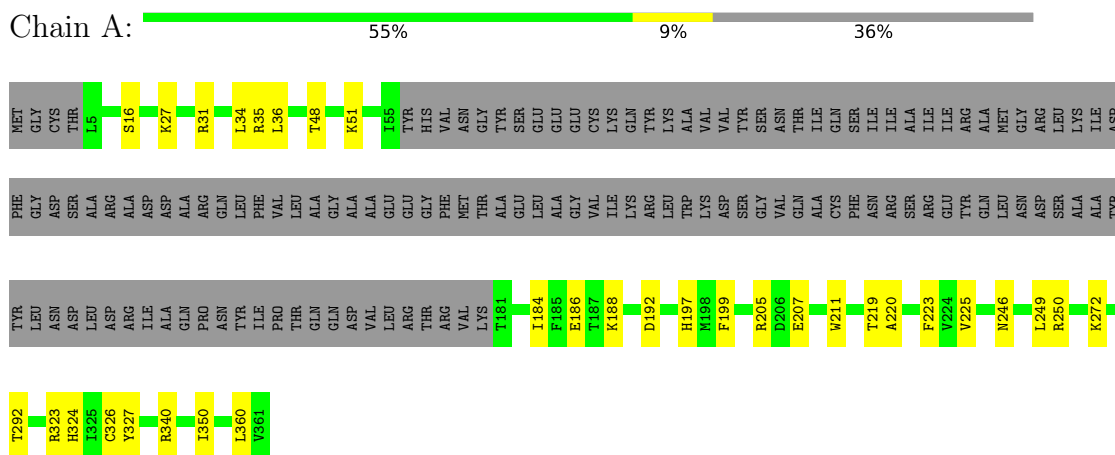


Mol	Chain	Residues	Atoms				AltConf	
			Total	C	H	N		O
6	R	1	118	37	67	1	13	0

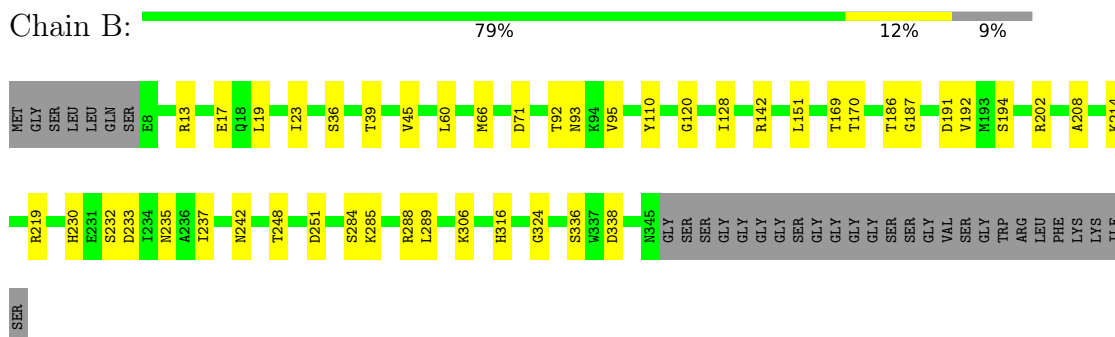
### 3 Residue-property plots [i](#)

These plots are drawn for all protein, RNA, DNA and oligosaccharide chains in the entry. The first graphic for a chain summarises the proportions of the various outlier classes displayed in the second graphic. The second graphic shows the sequence view annotated by issues in geometry. Residues are color-coded according to the number of geometric quality criteria for which they contain at least one outlier: green = 0, yellow = 1, orange = 2 and red = 3 or more. Stretches of 2 or more consecutive residues without any outlier are shown as a green connector. Residues present in the sample, but not in the model, are shown in grey.

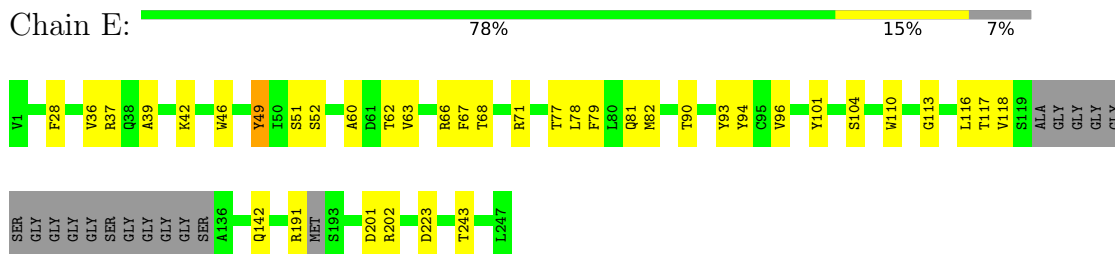
- Molecule 1: Guanine nucleotide-binding protein G(q) subunit alpha



- Molecule 2: Guanine nucleotide-binding protein G(I)/G(S)/G(T) subunit beta-1



- Molecule 3: scFv16



- Molecule 4: Guanine nucleotide-binding protein G(I)/G(S)/G(O) subunit gamma-2





## 4 Experimental information

Property	Value	Source
EM reconstruction method	SINGLE PARTICLE	Depositor
Imposed symmetry	POINT, Not provided	
Number of particles used	261108	Depositor
Resolution determination method	FSC 0.143 CUT-OFF	Depositor
CTF correction method	PHASE FLIPPING AND AMPLITUDE CORRECTION	Depositor
Microscope	FEI TITAN KRIOS	Depositor
Voltage (kV)	300	Depositor
Electron dose ( $e^-/\text{\AA}^2$ )	1.91	Depositor
Minimum defocus (nm)	8000	Depositor
Maximum defocus (nm)	20000	Depositor
Magnification	Not provided	
Image detector	GATAN K3 (6k x 4k)	Depositor

## 5 Model quality [i](#)

### 5.1 Standard geometry [i](#)

Bond lengths and bond angles in the following residue types are not validated in this section: ERY

The Z score for a bond length (or angle) is the number of standard deviations the observed value is removed from the expected value. A bond length (or angle) with  $|Z| > 5$  is considered an outlier worth inspection. RMSZ is the root-mean-square of all Z scores of the bond lengths (or angles).

Mol	Chain	Bond lengths		Bond angles	
		RMSZ	# Z  >5	RMSZ	# Z  >5
1	A	0.24	0/1942	0.39	0/2614
2	B	0.24	0/2637	0.43	0/3576
3	E	0.25	0/1811	0.43	0/2455
4	G	0.24	0/411	0.37	0/555
5	R	0.40	0/2232	0.52	1/3040 (0.0%)
All	All	0.29	0/9033	0.45	1/12240 (0.0%)

There are no bond length outliers.

All (1) bond angle outliers are listed below:

Mol	Chain	Res	Type	Atoms	Z	Observed(°)	Ideal(°)
5	R	142	ARG	N-CA-C	5.20	125.03	111.00

There are no chirality outliers.

There are no planarity outliers.

### 5.2 Too-close contacts [i](#)

In the following table, the Non-H and H(model) columns list the number of non-hydrogen atoms and hydrogen atoms in the chain respectively. The H(added) column lists the number of hydrogen atoms added and optimized by MolProbity. The Clashes column lists the number of clashes within the asymmetric unit, whereas Symm-Clashes lists symmetry-related clashes.

Mol	Chain	Non-H	H(model)	H(added)	Clashes	Symm-Clashes
1	A	1908	0	1905	28	0
2	B	2591	0	2496	32	0
3	E	1768	0	1709	24	0
4	G	407	0	419	2	0
5	R	2178	0	2293	104	0

*Continued on next page...*

*Continued from previous page...*

Mol	Chain	Non-H	H(model)	H(added)	Clashes	Symm-Clashes
6	R	51	67	67	24	0
All	All	8903	67	8889	187	0

The all-atom clashscore is defined as the number of clashes found per 1000 atoms (including hydrogen atoms). The all-atom clashscore for this structure is 11.

All (187) close contacts within the same asymmetric unit are listed below, sorted by their clash magnitude.

Atom-1	Atom-2	Interatomic distance (Å)	Clash overlap (Å)
5:R:149:LEU:HG	5:R:151:THR:HG23	1.29	1.12
5:R:341:LEU:HB2	6:R:601:ERY:H272	1.34	1.09
5:R:274:LEU:HD13	5:R:293:HIS:HB3	1.37	1.04
5:R:33:PHE:CZ	5:R:338:ILE:HG13	1.96	0.99
5:R:33:PHE:CZ	5:R:338:ILE:CG1	2.46	0.98
5:R:341:LEU:HB2	6:R:601:ERY:C27	1.94	0.97
5:R:341:LEU:HD12	6:R:601:ERY:H272	1.45	0.96
5:R:33:PHE:CE2	5:R:338:ILE:HD11	2.03	0.94
5:R:33:PHE:CZ	5:R:338:ILE:HD11	2.04	0.92
1:A:223:PHE:CE2	1:A:225:VAL:HG21	2.09	0.88
5:R:141:CYS:SG	5:R:142:ARG:NH2	2.49	0.86
5:R:33:PHE:CZ	5:R:338:ILE:CD1	2.59	0.86
5:R:341:LEU:CD1	6:R:601:ERY:H272	2.06	0.85
1:A:350:ILE:HG21	5:R:144:LEU:HD21	1.65	0.79
1:A:223:PHE:CE2	1:A:225:VAL:CG2	2.65	0.78
2:B:169:THR:HG22	2:B:169:THR:O	1.85	0.76
5:R:316:VAL:HG12	5:R:320:ILE:HD11	1.68	0.76
1:A:27:LYS:HG3	2:B:60:LEU:HD11	1.69	0.74
5:R:341:LEU:CB	6:R:601:ERY:H272	2.17	0.73
5:R:33:PHE:HZ	5:R:338:ILE:CG1	1.99	0.73
5:R:149:LEU:HG	5:R:151:THR:CG2	2.14	0.73
5:R:316:VAL:HG12	5:R:320:ILE:CD1	2.18	0.73
1:A:292:THR:O	1:A:292:THR:HG23	1.89	0.72
5:R:334:GLN:NE2	6:R:601:ERY:C34	2.52	0.72
5:R:33:PHE:CE1	5:R:338:ILE:HG13	2.24	0.72
5:R:42:THR:HG22	5:R:95:LEU:HD11	1.73	0.70
5:R:334:GLN:O	5:R:338:ILE:HG12	1.92	0.70
5:R:353:ILE:HG23	5:R:357:LEU:HD12	1.74	0.69
5:R:33:PHE:CE2	5:R:338:ILE:CD1	2.79	0.66
1:A:246:ASN:HB3	1:A:249:LEU:HB2	1.78	0.65
5:R:151:THR:OG1	5:R:154:ARG:CB	2.44	0.65
5:R:274:LEU:CD1	5:R:293:HIS:HB3	2.19	0.65

*Continued on next page...*

*Continued from previous page...*

Atom-1	Atom-2	Interatomic distance (Å)	Clash overlap (Å)
5:R:97:ARG:HD2	6:R:601:ERY:C32	2.26	0.65
5:R:341:LEU:HD12	6:R:601:ERY:C27	2.26	0.64
5:R:151:THR:OG1	5:R:154:ARG:N	2.31	0.64
2:B:92:THR:HG22	2:B:92:THR:O	1.96	0.64
5:R:94:ASP:O	5:R:98:LEU:HG	1.99	0.63
5:R:274:LEU:HD13	5:R:293:HIS:CB	2.25	0.60
5:R:319:ILE:HA	5:R:322:ILE:HG12	1.83	0.59
5:R:97:ARG:HD2	6:R:601:ERY:H322	1.83	0.59
6:R:601:ERY:H11	6:R:601:ERY:H71	1.84	0.58
1:A:350:ILE:HG21	5:R:144:LEU:CD2	2.34	0.57
5:R:116:TYR:HB2	5:R:174:LEU:HG	1.86	0.57
1:A:207:GLU:O	1:A:211:TRP:NE1	2.34	0.56
3:E:28:PHE:O	3:E:71:ARG:NH2	2.38	0.56
5:R:127:LEU:HB3	5:R:162:LEU:HD22	1.86	0.56
5:R:316:VAL:CG1	5:R:320:ILE:HD11	2.34	0.56
1:A:223:PHE:CE2	1:A:225:VAL:HG23	2.42	0.55
5:R:247:VAL:O	5:R:251:VAL:HG23	2.07	0.55
5:R:44:VAL:HA	5:R:47:CYS:SG	2.47	0.54
5:R:97:ARG:HD3	6:R:601:ERY:H333	1.88	0.54
2:B:202:ARG:HE	2:B:219:ARG:HH21	1.54	0.54
5:R:42:THR:O	5:R:46:LEU:HG	2.07	0.54
2:B:194:SER:HB3	2:B:237:ILE:HG22	1.90	0.54
2:B:169:THR:O	2:B:169:THR:CG2	2.56	0.54
2:B:128:ILE:HB	2:B:142:ARG:HB2	1.90	0.53
2:B:232:SER:OG	2:B:233:ASP:N	2.40	0.53
1:A:184:ILE:HD11	1:A:199:PHE:HB3	1.91	0.53
5:R:97:ARG:CD	6:R:601:ERY:H322	2.39	0.52
5:R:155:VAL:O	5:R:159:ILE:HG13	2.09	0.52
2:B:120:GLY:HA3	2:B:151:LEU:HD12	1.91	0.52
3:E:90:THR:HA	3:E:116:LEU:O	2.09	0.52
3:E:96:VAL:HG12	3:E:110:TRP:HA	1.91	0.52
1:A:192:ASP:OD1	1:A:340:ARG:NH1	2.43	0.52
1:A:223:PHE:HE2	1:A:225:VAL:HG21	1.70	0.51
5:R:115:LEU:HD11	6:R:601:ERY:H313	1.93	0.51
5:R:57:VAL:HA	5:R:60:VAL:HG12	1.91	0.51
5:R:176:LEU:HD11	5:R:245:LEU:HB2	1.93	0.50
6:R:601:ERY:H11	6:R:601:ERY:C7	2.41	0.50
3:E:142:GLN:NE2	3:E:243:THR:OG1	2.44	0.50
5:R:341:LEU:HB2	6:R:601:ERY:H273	1.89	0.50
5:R:249:LEU:HD11	6:R:601:ERY:C20	2.42	0.50
3:E:93:TYR:O	3:E:113:GLY:CA	2.60	0.50

*Continued on next page...*

*Continued from previous page...*

Atom-1	Atom-2	Interatomic distance (Å)	Clash overlap (Å)
3:E:51:SER:OG	3:E:52:SER:N	2.45	0.50
6:R:601:ERY:H213	6:R:601:ERY:H193	1.93	0.49
2:B:284:SER:OG	2:B:285:LYS:N	2.46	0.49
3:E:36:VAL:HG23	3:E:94:TYR:HB2	1.94	0.49
5:R:33:PHE:HZ	5:R:338:ILE:HD11	1.73	0.49
1:A:36:LEU:HD22	1:A:220:ALA:HB3	1.94	0.49
5:R:334:GLN:NE2	6:R:601:ERY:H343	2.27	0.49
1:A:292:THR:O	1:A:292:THR:CG2	2.61	0.49
5:R:245:LEU:O	5:R:248:MET:HG3	2.12	0.49
5:R:316:VAL:O	5:R:319:ILE:HG12	2.12	0.49
5:R:248:MET:O	5:R:252:THR:HG23	2.12	0.49
3:E:67:PHE:CG	3:E:82:MET:HG2	2.48	0.48
5:R:91:LEU:HD13	5:R:345:TYR:CE2	2.48	0.48
5:R:151:THR:OG1	5:R:154:ARG:HB3	2.12	0.48
5:R:82:VAL:O	5:R:86:LEU:HG	2.13	0.48
2:B:170:THR:HG22	2:B:186:THR:HG22	1.95	0.48
2:B:95:VAL:HG13	3:E:101:TYR:HB2	1.95	0.48
2:B:13:ARG:O	2:B:17:GLU:HG2	2.14	0.48
5:R:80:MET:HG2	5:R:125:THR:HG23	1.94	0.47
1:A:16:SER:HB2	2:B:93:ASN:HB2	1.96	0.47
1:A:326:CYS:SG	1:A:327:TYR:N	2.88	0.47
2:B:71:ASP:OD1	2:B:71:ASP:N	2.46	0.47
5:R:334:GLN:HE22	6:R:601:ERY:C34	2.27	0.47
5:R:365:ALA:HA	5:R:368:LYS:HG2	1.96	0.47
3:E:90:THR:HB	3:E:118:VAL:HG22	1.96	0.47
5:R:33:PHE:HE2	5:R:338:ILE:HD11	1.71	0.47
2:B:66:MET:HE1	2:B:324:GLY:HA3	1.97	0.46
1:A:34:LEU:HD13	1:A:219:THR:HG21	1.96	0.46
2:B:336:SER:OG	2:B:338:ASP:OD1	2.34	0.46
3:E:93:TYR:O	3:E:113:GLY:HA2	2.15	0.46
5:R:76:TYR:CE2	5:R:155:VAL:HG23	2.49	0.46
5:R:143:PRO:C	5:R:145:ARG:H	2.19	0.46
5:R:315:HIS:O	5:R:316:VAL:C	2.49	0.46
1:A:48:THR:HA	1:A:51:LYS:HG2	1.98	0.46
5:R:76:TYR:CZ	5:R:155:VAL:HG23	2.50	0.46
6:R:601:ERY:H282	6:R:601:ERY:H251	1.66	0.46
5:R:149:LEU:HD12	5:R:149:LEU:HA	1.59	0.46
5:R:41:VAL:HG22	5:R:342:GLN:HE21	1.80	0.46
5:R:151:THR:C	5:R:153:ARG:N	2.69	0.46
5:R:316:VAL:O	5:R:320:ILE:HG13	2.15	0.45
2:B:45:VAL:HG21	2:B:289:LEU:HD21	1.98	0.45

*Continued on next page...*

*Continued from previous page...*

Atom-1	Atom-2	Interatomic distance (Å)	Clash overlap (Å)
5:R:48:LEU:HD21	5:R:345:TYR:O	2.17	0.45
3:E:77:THR:HG21	3:E:79:PHE:CZ	2.52	0.45
1:A:205:ARG:NH1	2:B:191:ASP:OD1	2.50	0.45
3:E:77:THR:HG22	3:E:78:LEU:N	2.32	0.45
5:R:151:THR:OG1	5:R:154:ARG:HB2	2.15	0.45
5:R:151:THR:O	5:R:153:ARG:N	2.45	0.45
2:B:36:SER:HA	2:B:39:THR:HG22	1.98	0.45
2:B:316:HIS:HD1	2:B:336:SER:HG	1.61	0.45
5:R:293:HIS:O	5:R:297:VAL:HG23	2.16	0.45
5:R:35:LEU:O	5:R:39:VAL:HG23	2.17	0.45
5:R:45:CYS:SG	5:R:95:LEU:HD22	2.57	0.44
5:R:92:PRO:C	5:R:94:ASP:H	2.21	0.44
5:R:256:PHE:HB2	5:R:315:HIS:NE2	2.33	0.44
5:R:318:ARG:O	5:R:322:ILE:HG23	2.18	0.44
1:A:35:ARG:HB3	1:A:199:PHE:HE2	1.83	0.43
1:A:188:LYS:HG2	1:A:197:HIS:CD2	2.53	0.43
3:E:68:THR:HG22	3:E:81:GLN:HB2	2.00	0.43
2:B:235:ASN:ND2	2:B:251:ASP:OD1	2.51	0.43
5:R:326:ASP:OD1	5:R:327:SER:N	2.51	0.43
3:E:60:ALA:HB3	3:E:63:VAL:HG22	2.00	0.43
5:R:33:PHE:HZ	5:R:338:ILE:HG12	1.80	0.43
5:R:140:ILE:HG22	5:R:273:GLU:OE1	2.18	0.43
1:A:223:PHE:CZ	1:A:225:VAL:CG2	3.02	0.43
5:R:145:ARG:HA	5:R:145:ARG:HD2	1.40	0.43
5:R:334:GLN:NE2	6:R:601:ERY:H341	2.31	0.43
3:E:37:ARG:HH22	3:E:63:VAL:HG11	1.83	0.42
5:R:260:PHE:CD1	5:R:308:ILE:HD11	2.54	0.42
1:A:360:LEU:HD12	5:R:140:ILE:HG13	2.01	0.42
3:E:62:THR:HG23	3:E:63:VAL:HG13	2.02	0.42
2:B:316:HIS:ND1	2:B:336:SER:OG	2.50	0.42
5:R:262:CYS:SG	5:R:263:LEU:N	2.92	0.42
5:R:265:ILE:O	5:R:269:LEU:HG	2.20	0.42
5:R:149:LEU:O	5:R:150:VAL:C	2.57	0.42
5:R:320:ILE:O	5:R:323:ASN:N	2.49	0.42
2:B:192:VAL:HA	2:B:208:ALA:HA	2.01	0.42
3:E:39:ALA:HB3	3:E:42:LYS:HB2	2.01	0.42
5:R:45:CYS:SG	5:R:91:LEU:HD11	2.60	0.42
5:R:89:LEU:O	5:R:92:PRO:HD2	2.20	0.41
5:R:137:TYR:CG	5:R:266:LEU:HD22	2.54	0.41
3:E:62:THR:O	3:E:66:ARG:NH2	2.49	0.41
3:E:90:THR:OG1	3:E:117:THR:HA	2.20	0.41

*Continued on next page...*

Continued from previous page...

Atom-1	Atom-2	Interatomic distance (Å)	Clash overlap (Å)
6:R:601:ERY:H23	6:R:601:ERY:H283	1.91	0.41
1:A:223:PHE:CZ	1:A:225:VAL:HG21	2.52	0.41
1:A:250:ARG:HH21	1:A:323:ARG:HH12	1.68	0.41
3:E:202:ARG:NH1	3:E:223:ASP:OD2	2.51	0.41
2:B:187:GLY:O	2:B:214:LYS:NZ	2.54	0.41
2:B:288:ARG:HB3	4:G:50:LEU:HD21	2.02	0.41
5:R:357:LEU:HD23	5:R:357:LEU:HA	1.91	0.41
2:B:306:LYS:HA	2:B:306:LYS:HD2	1.82	0.41
5:R:47:CYS:O	5:R:51:VAL:HG12	2.21	0.41
5:R:80:MET:HB3	5:R:80:MET:HE2	1.93	0.41
5:R:341:LEU:CG	6:R:601:ERY:H272	2.50	0.41
1:A:272:LYS:HA	1:A:272:LYS:HD2	1.87	0.41
5:R:312:LEU:O	5:R:316:VAL:HG23	2.21	0.41
1:A:36:LEU:HD23	1:A:219:THR:HB	2.03	0.41
3:E:46:TRP:HZ2	3:E:49:TYR:HB3	1.85	0.41
5:R:112:ARG:HH11	5:R:178:GLY:HA2	1.85	0.41
2:B:19:LEU:HD23	2:B:19:LEU:HA	1.96	0.41
2:B:23:ILE:HD12	2:B:23:ILE:HA	1.91	0.41
2:B:242:ASN:HB3	4:G:39:TYR:CE2	2.56	0.41
6:R:601:ERY:C14	6:R:601:ERY:H302	2.51	0.41
1:A:186:GLU:HG3	1:A:199:PHE:CE1	2.56	0.41
3:E:201:ASP:OD1	3:E:201:ASP:N	2.52	0.41
5:R:113:LEU:O	5:R:117:VAL:HG22	2.21	0.41
5:R:152:ARG:O	5:R:155:VAL:HG12	2.19	0.41
2:B:60:LEU:HA	2:B:60:LEU:HD12	1.89	0.40
5:R:105:VAL:HG11	5:R:235:CYS:SG	2.61	0.40
5:R:326:ASP:HB3	5:R:329:MET:HG2	2.03	0.40
2:B:230:HIS:NE2	2:B:248:THR:OG1	2.49	0.40
5:R:78:GLY:O	5:R:82:VAL:HG13	2.22	0.40
3:E:104:SER:O	3:E:191:ARG:NH1	2.54	0.40
5:R:170:ALA:HA	5:R:173:PHE:HD2	1.87	0.40
5:R:274:LEU:HD12	5:R:274:LEU:O	2.22	0.40

There are no symmetry-related clashes.

## 5.3 Torsion angles [i](#)

### 5.3.1 Protein backbone [i](#)

In the following table, the Percentiles column shows the percent Ramachandran outliers of the chain as a percentile score with respect to all PDB entries followed by that with respect to all EM

entries.

The Analysed column shows the number of residues for which the backbone conformation was analysed, and the total number of residues.

Mol	Chain	Analysed	Favoured	Allowed	Outliers	Percentiles	
1	A	228/361 (63%)	220 (96%)	8 (4%)	0	100	100
2	B	336/371 (91%)	332 (99%)	4 (1%)	0	100	100
3	E	224/247 (91%)	222 (99%)	2 (1%)	0	100	100
4	G	52/70 (74%)	52 (100%)	0	0	100	100
5	R	267/741 (36%)	256 (96%)	11 (4%)	0	100	100
All	All	1107/1790 (62%)	1082 (98%)	25 (2%)	0	100	100

There are no Ramachandran outliers to report.

### 5.3.2 Protein sidechains [i](#)

In the following table, the Percentiles column shows the percent sidechain outliers of the chain as a percentile score with respect to all PDB entries followed by that with respect to all EM entries.

The Analysed column shows the number of residues for which the sidechain conformation was analysed, and the total number of residues.

Mol	Chain	Analysed	Rotameric	Outliers	Percentiles	
1	A	210/316 (66%)	208 (99%)	2 (1%)	76	88
2	B	279/302 (92%)	278 (100%)	1 (0%)	91	96
3	E	194/198 (98%)	193 (100%)	1 (0%)	88	95
4	G	43/57 (75%)	42 (98%)	1 (2%)	50	77
5	R	236/615 (38%)	228 (97%)	8 (3%)	37	68
All	All	962/1488 (65%)	949 (99%)	13 (1%)	68	85

All (13) residues with a non-rotameric sidechain are listed below:

Mol	Chain	Res	Type
1	A	31	ARG
1	A	324	HIS
2	B	110	TYR
3	E	49	TYR
4	G	17	GLN
5	R	94	ASP

*Continued on next page...*



*Continued from previous page...*

Mol	Chain	Res	Type
5	R	95	LEU
5	R	97	ARG
5	R	145	ARG
5	R	147	ARG
5	R	148	VAL
5	R	318	ARG
5	R	334	GLN

Sometimes sidechains can be flipped to improve hydrogen bonding and reduce clashes. All (15) such sidechains are listed below:

Mol	Chain	Res	Type
1	A	24	GLN
1	A	190	GLN
1	A	324	HIS
2	B	49	GLN
2	B	80	GLN
2	B	161	GLN
2	B	244	ASN
3	E	38	GLN
3	E	142	GLN
3	E	179	GLN
4	G	17	GLN
5	R	334	GLN
5	R	342	GLN
5	R	351	ASN
5	R	356	ASN

### 5.3.3 RNA [i](#)

There are no RNA molecules in this entry.

### 5.4 Non-standard residues in protein, DNA, RNA chains [i](#)

There are no non-standard protein/DNA/RNA residues in this entry.

### 5.5 Carbohydrates [i](#)

There are no monosaccharides in this entry.

## 5.6 Ligand geometry

1 ligand is modelled in this entry.

In the following table, the Counts columns list the number of bonds (or angles) for which Mogul statistics could be retrieved, the number of bonds (or angles) that are observed in the model and the number of bonds (or angles) that are defined in the Chemical Component Dictionary. The Link column lists molecule types, if any, to which the group is linked. The Z score for a bond length (or angle) is the number of standard deviations the observed value is removed from the expected value. A bond length (or angle) with  $|Z| > 2$  is considered an outlier worth inspection. RMSZ is the root-mean-square of all Z scores of the bond lengths (or angles).

Mol	Type	Chain	Res	Link	Bond lengths			Bond angles		
					Counts	RMSZ	# Z  > 2	Counts	RMSZ	# Z  > 2
6	ERY	R	601	-	53,53,53	1.87	12 (22%)	82,82,82	2.17	30 (36%)

In the following table, the Chirals column lists the number of chiral outliers, the number of chiral centers analysed, the number of these observed in the model and the number defined in the Chemical Component Dictionary. Similar counts are reported in the Torsion and Rings columns. '-' means no outliers of that kind were identified.

Mol	Type	Chain	Res	Link	Chirals	Torsions	Rings
6	ERY	R	601	-	-	14/72/107/107	0/3/3/3

All (12) bond length outliers are listed below:

Mol	Chain	Res	Type	Atoms	Z	Observed(Å)	Ideal(Å)
6	R	601	ERY	C12-C13	5.08	1.64	1.54
6	R	601	ERY	C10-C11	-4.93	1.47	1.54
6	R	601	ERY	C32-C6	4.27	1.59	1.52
6	R	601	ERY	C7-C6	-3.99	1.47	1.54
6	R	601	ERY	O2-C1	-3.78	1.25	1.34
6	R	601	ERY	C35-C12	-3.52	1.46	1.52
6	R	601	ERY	C7-C8	-3.46	1.49	1.54
6	R	601	ERY	O13-C12	-2.89	1.39	1.44
6	R	601	ERY	C2-C3	-2.87	1.48	1.55
6	R	601	ERY	O3-C3	2.81	1.51	1.43
6	R	601	ERY	C12-C11	-2.65	1.49	1.55
6	R	601	ERY	C33-C8	2.09	1.59	1.52

All (30) bond angle outliers are listed below:

Mol	Chain	Res	Type	Atoms	Z	Observed(°)	Ideal(°)
6	R	601	ERY	C22-O7-C5	-5.42	106.84	116.25

*Continued on next page...*

*Continued from previous page...*

Mol	Chain	Res	Type	Atoms	Z	Observed(°)	Ideal(°)
6	R	601	ERY	C20-O5-C16	-5.12	106.86	117.55
6	R	601	ERY	O2-C1-C2	5.01	122.55	111.56
6	R	601	ERY	O7-C5-C6	4.98	112.54	106.39
6	R	601	ERY	C36-C13-C12	-4.84	106.02	115.20
6	R	601	ERY	C12-C11-C10	-4.11	111.28	116.43
6	R	601	ERY	O1-C1-C2	-4.02	113.32	124.08
6	R	601	ERY	C14-O3-C3	-3.90	106.77	114.66
6	R	601	ERY	O11-C9-C8	-3.73	114.34	121.26
6	R	601	ERY	C35-C12-C13	-3.65	106.17	111.31
6	R	601	ERY	C22-O9-C26	-3.33	107.64	112.91
6	R	601	ERY	C32-C6-C5	-3.31	104.29	110.12
6	R	601	ERY	O5-C16-C17	3.04	108.31	103.81
6	R	601	ERY	O5-C16-C15	-3.03	108.10	112.96
6	R	601	ERY	C34-C10-C11	-3.00	110.64	114.38
6	R	601	ERY	C16-C15-C14	-2.91	110.02	115.07
6	R	601	ERY	O12-C11-C10	-2.88	106.40	110.71
6	R	601	ERY	C31-C4-C3	-2.75	106.47	111.40
6	R	601	ERY	C27-C26-C25	-2.55	109.40	113.40
6	R	601	ERY	O4-C18-C17	2.47	114.44	110.03
6	R	601	ERY	C6-C5-C4	-2.28	110.82	114.05
6	R	601	ERY	O4-C18-C21	2.26	111.58	106.70
6	R	601	ERY	O3-C3-C2	-2.25	107.22	111.14
6	R	601	ERY	C31-C4-C5	-2.22	107.75	112.55
6	R	601	ERY	C25-C24-N1	-2.16	109.56	115.67
6	R	601	ERY	C28-N1-C24	-2.15	106.66	113.11
6	R	601	ERY	C16-C17-C18	2.10	114.36	111.14
6	R	601	ERY	C29-N1-C24	-2.10	106.81	113.11
6	R	601	ERY	C15-C16-C17	2.04	111.32	107.67
6	R	601	ERY	O11-C9-C10	2.02	123.47	120.60

There are no chirality outliers.

All (14) torsion outliers are listed below:

Mol	Chain	Res	Type	Atoms
6	R	601	ERY	C34-C10-C11-C12
6	R	601	ERY	C6-C7-C8-C9
6	R	601	ERY	C6-C7-C8-C33
6	R	601	ERY	C17-C16-O5-C20
6	R	601	ERY	C2-C3-C4-C31
6	R	601	ERY	O3-C3-C4-C31
6	R	601	ERY	C11-C10-C9-C8
6	R	601	ERY	C34-C10-C11-O12

*Continued on next page...*

*Continued from previous page...*

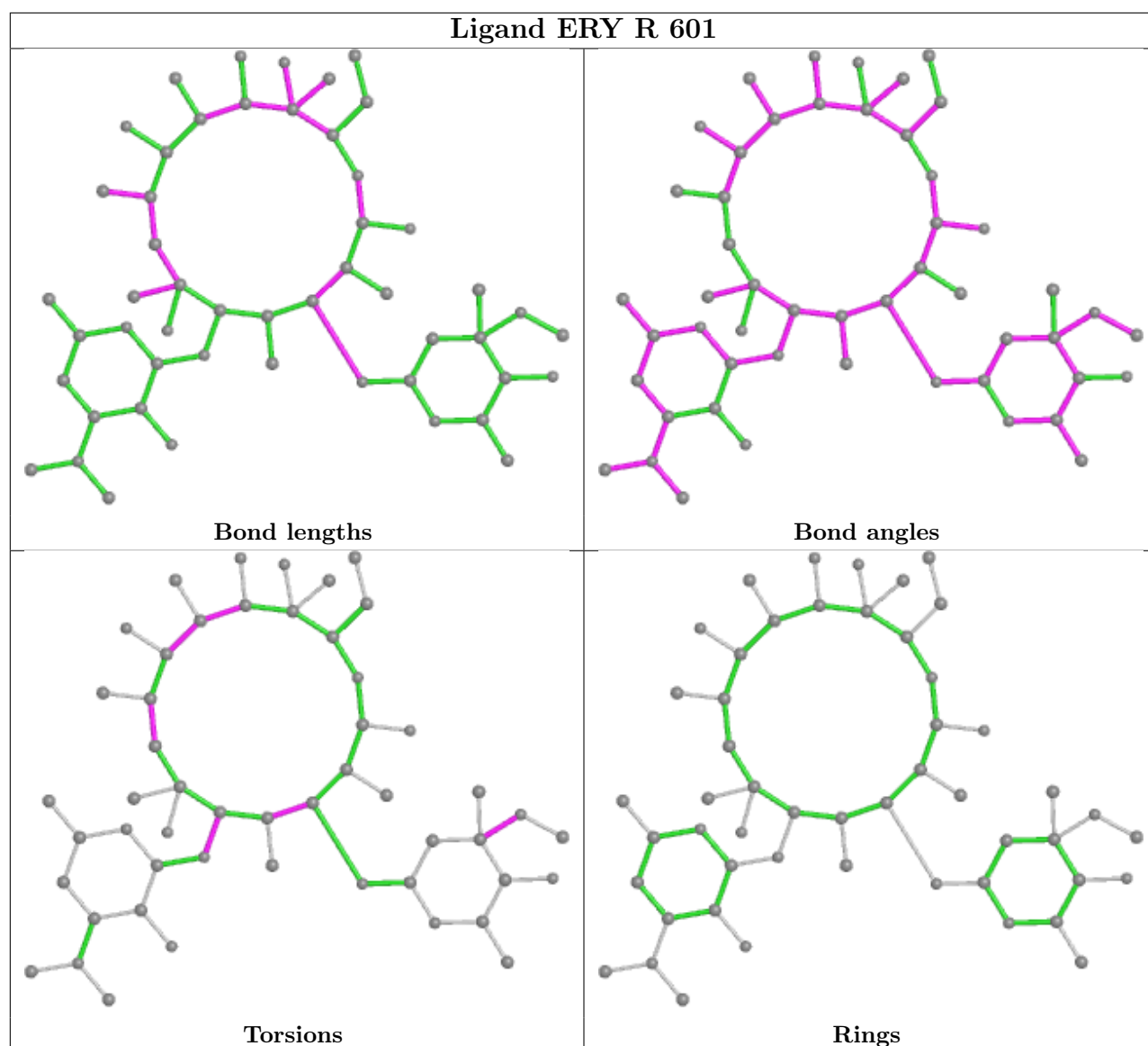
Mol	Chain	Res	Type	Atoms
6	R	601	ERY	C11-C10-C9-O11
6	R	601	ERY	O3-C3-C4-C5
6	R	601	ERY	C9-C10-C11-C12
6	R	601	ERY	C9-C10-C11-O12
6	R	601	ERY	C4-C5-O7-C22
6	R	601	ERY	C2-C3-C4-C5

There are no ring outliers.

1 monomer is involved in 24 short contacts:

Mol	Chain	Res	Type	Clashes	Symm-Clashes
6	R	601	ERY	24	0

The following is a two-dimensional graphical depiction of Mogul quality analysis of bond lengths, bond angles, torsion angles, and ring geometry for all instances of the Ligand of Interest. In addition, ligands with molecular weight > 250 and outliers as shown on the validation Tables will also be included. For torsion angles, if less than 5% of the Mogul distribution of torsion angles is within 10 degrees of the torsion angle in question, then that torsion angle is considered an outlier. Any bond that is central to one or more torsion angles identified as an outlier by Mogul will be highlighted in the graph. For rings, the root-mean-square deviation (RMSD) between the ring in question and similar rings identified by Mogul is calculated over all ring torsion angles. If the average RMSD is greater than 60 degrees and the minimal RMSD between the ring in question and any Mogul-identified rings is also greater than 60 degrees, then that ring is considered an outlier. The outliers are highlighted in purple. The color gray indicates Mogul did not find sufficient equivalents in the CSD to analyse the geometry.



## 5.7 Other polymers [i](#)

There are no such residues in this entry.

## 5.8 Polymer linkage issues [i](#)

There are no chain breaks in this entry.