



wwPDB X-ray Structure Validation Summary Report ⓘ

Aug 20, 2023 – 07:11 AM EDT

PDB ID : 2IGA
Title : Structure of Homoprotocatechuate 2,3-Dioxygenase from *B. fuscum* in complex with reactive intermediates formed via in crystallo reaction with 4-nitrocatechol at low oxygen concentrations.
Authors : Kovaleva, E.G.; Lipscomb, J.D.
Deposited on : 2006-09-22
Resolution : 1.95 Å(reported)

This is a wwPDB X-ray Structure Validation Summary Report for a publicly released PDB entry.

We welcome your comments at validation@mail.wwpdb.org

A user guide is available at

<https://www.wwpdb.org/validation/2017/XrayValidationReportHelp>

with specific help available everywhere you see the ⓘ symbol.

The types of validation reports are described at

<http://www.wwpdb.org/validation/2017/FAQs#types>.

The following versions of software and data (see [references ⓘ](#)) were used in the production of this report:

MolProbity : 4.02b-467
Mogul : 1.8.5 (274361), CSD as541be (2020)
Xtriage (Phenix) : 1.13
EDS : 2.35
Percentile statistics : 20191225.v01 (using entries in the PDB archive December 25th 2019)
Refmac : 5.8.0158
CCP4 : 7.0.044 (Gargrove)
Ideal geometry (proteins) : Engh & Huber (2001)
Ideal geometry (DNA, RNA) : Parkinson et al. (1996)
Validation Pipeline (wwPDB-VP) : 2.35

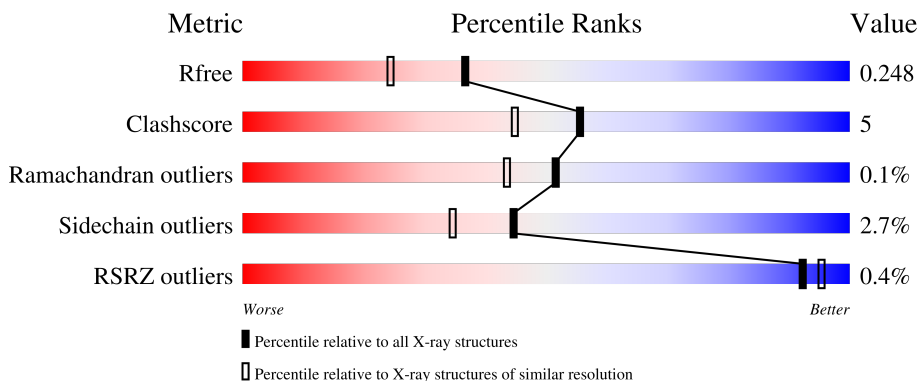
1 Overall quality at a glance

The following experimental techniques were used to determine the structure:

X-RAY DIFFRACTION

The reported resolution of this entry is 1.95 Å.

Percentile scores (ranging between 0-100) for global validation metrics of the entry are shown in the following graphic. The table shows the number of entries on which the scores are based.



Metric	Whole archive (#Entries)	Similar resolution (#Entries, resolution range(Å))
R_{free}	130704	2580 (1.96-1.96)
Clashscore	141614	2705 (1.96-1.96)
Ramachandran outliers	138981	2678 (1.96-1.96)
Sidechain outliers	138945	2678 (1.96-1.96)
RSRZ outliers	127900	2539 (1.96-1.96)

The table below summarises the geometric issues observed across the polymeric chains and their fit to the electron density. The red, orange, yellow and green segments of the lower bar indicate the fraction of residues that contain outliers for ≥ 3 , 2, 1 and 0 types of geometric quality criteria respectively. A grey segment represents the fraction of residues that are not modelled. The numeric value for each fraction is indicated below the corresponding segment, with a dot representing fractions $\leq 5\%$. The upper red bar (where present) indicates the fraction of residues that have poor fit to the electron density. The numeric value is given above the bar.

Mol	Chain	Length	Quality of chain
1	A	365	 88% 10% ..
1	B	365	 83% 15% .
1	C	365	 87% 11% .
1	D	365	 87% 10% ..

The following table lists non-polymeric compounds, carbohydrate monomers and non-standard

residues in protein, DNA, RNA chains that are outliers for geometric or electron-density-fit criteria:

Mol	Type	Chain	Res	Chirality	Geometry	Clashes	Electron density
4	XXP	A	600[B]	-	-	X	-
5	GOL	B	804	-	-	X	-
9	OXY	C	600	-	-	X	-

2 Entry composition [i](#)

There are 10 unique types of molecules in this entry. The entry contains 12927 atoms, of which 0 are hydrogens and 0 are deuteriums.

In the tables below, the ZeroOcc column contains the number of atoms modelled with zero occupancy, the AltConf column contains the number of residues with at least one atom in alternate conformation and the Trace column contains the number of residues modelled with at most 2 atoms.

- Molecule 1 is a protein called Homoprotocatechuate 2,3-dioxygenase.

Mol	Chain	Residues	Atoms					ZeroOcc	AltConf	Trace
			Total	C	N	O	S			
1	A	359	2951	1863	516	565	7	0	11	0
1	B	359	2930	1850	512	560	8	0	7	0
1	C	359	2933	1852	511	563	7	0	9	0
1	D	359	2932	1854	513	558	7	0	8	0

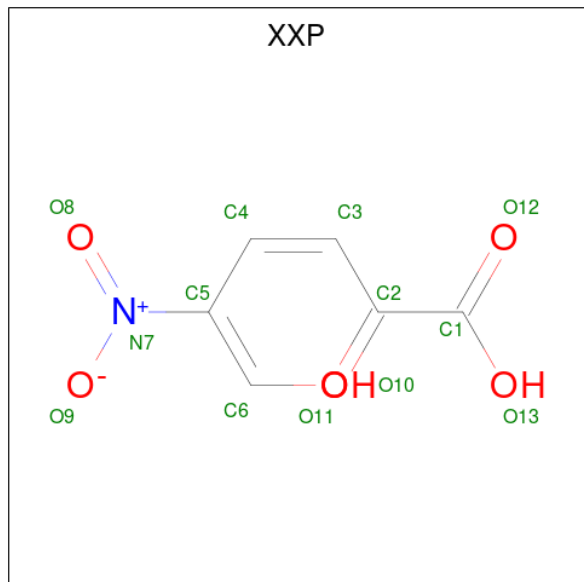
- Molecule 2 is FE (II) ION (three-letter code: FE2) (formula: Fe).

Mol	Chain	Residues	Atoms		ZeroOcc	AltConf
2	A	1	Total	Fe	0	0
			1	1		
2	B	1	Total	Fe	0	0
			1	1		
2	C	1	Total	Fe	0	0
			1	1		
2	D	1	Total	Fe	0	0
			1	1		

- Molecule 3 is CHLORIDE ION (three-letter code: CL) (formula: Cl).

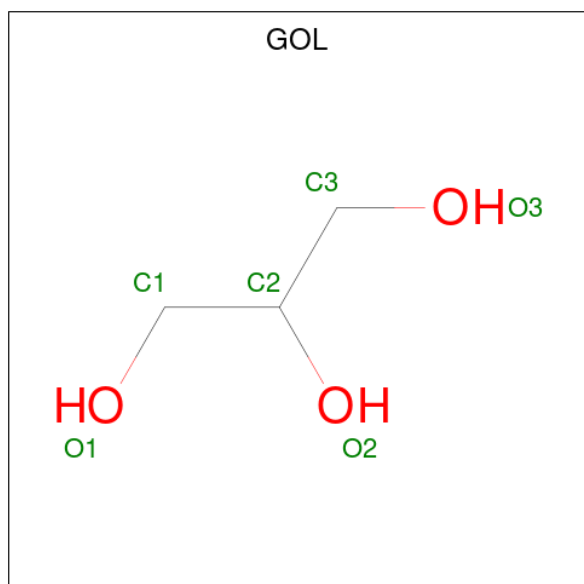
Mol	Chain	Residues	Atoms		ZeroOcc	AltConf
3	A	1	Total	Cl	0	1
			1	1		
3	B	1	Total	Cl	0	1
			1	1		
3	C	1	Total	Cl	0	1
			1	1		
3	D	1	Total	Cl	0	1
			1	1		

- Molecule 4 is 2-KETO,5-NITRO,6-HYDROXY-3,5-HEXADIENOIC ACID (three-letter code: XXP) (formula: $C_6H_5NO_6$).



Mol	Chain	Residues	Atoms				ZeroOcc	AltConf
			Total	C	N	O		
4	A	1	13	6	1	6	0	1

- Molecule 5 is GLYCEROL (three-letter code: GOL) (formula: $C_3H_8O_3$).



Mol	Chain	Residues	Atoms			ZeroOcc	AltConf
			Total	C	O		
5	A	1	6	3	3	0	0

Continued on next page...

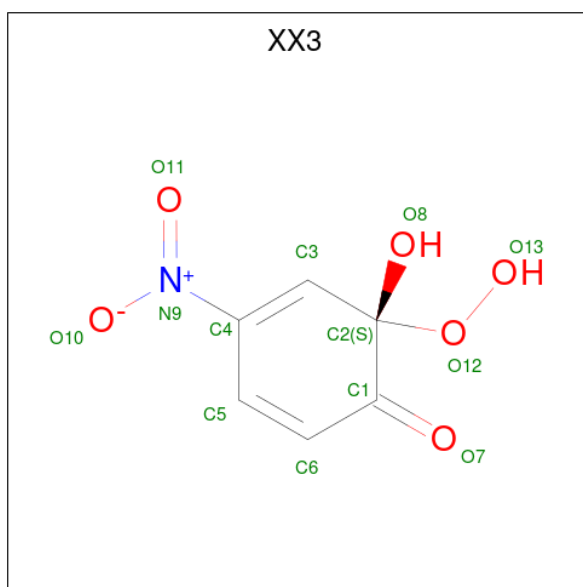
Continued from previous page...

Mol	Chain	Residues	Atoms	ZeroOcc	AltConf
5	A	1	Total C O 6 3 3	0	0
5	B	1	Total C O 6 3 3	0	0
5	B	1	Total C O 6 3 3	0	0
5	B	1	Total C O 6 3 3	0	0
5	B	1	Total C O 6 3 3	0	0
5	B	1	Total C O 6 3 3	0	0
5	B	1	Total C O 6 3 3	0	0
5	C	1	Total C O 6 3 3	0	0
5	C	1	Total C O 6 3 3	0	0
5	C	1	Total C O 6 3 3	0	0
5	D	1	Total C O 6 3 3	0	0
5	D	1	Total C O 6 3 3	0	0

- Molecule 6 is CALCIUM ION (three-letter code: CA) (formula: Ca).

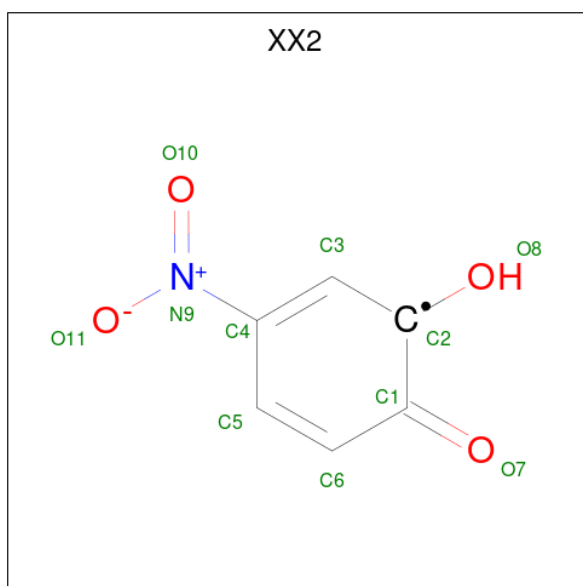
Mol	Chain	Residues	Atoms	ZeroOcc	AltConf
6	B	1	Total Ca 1 1	0	0

- Molecule 7 is (1S)-1-HYDROPEROXY-1-HYDROXY-2-KETO-5-NITROCYCLOHEXA-3,5-DIENE (three-letter code: XX3) (formula: C₆H₅NO₆).



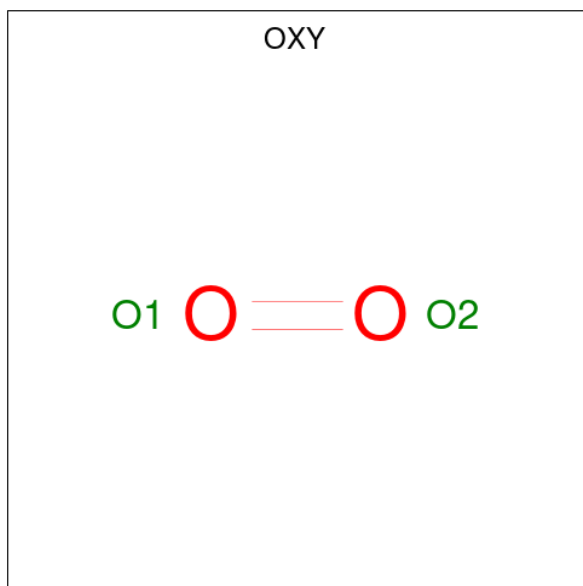
Mol	Chain	Residues	Atoms				ZeroOcc	AltConf
			Total	C	N	O		
7	B	1	13	6	1	6	0	1
7	D	1	13	6	1	6	0	1

- Molecule 8 is 1-KETO,2-HYDROXY,4-NITROBENZENE, 1 ELECTRON OXIDIZED (three-letter code: XX2) (formula: C₆H₄NO₄).



Mol	Chain	Residues	Atoms				ZeroOcc	AltConf
			Total	C	N	O		
8	C	1	11	6	1	4	0	1

- Molecule 9 is OXYGEN MOLECULE (three-letter code: OXY) (formula: O₂).



Mol	Chain	Residues	Atoms	ZeroOcc	AltConf
9	C	1	Total O 2 2	0	0


- Molecule 10 is water.

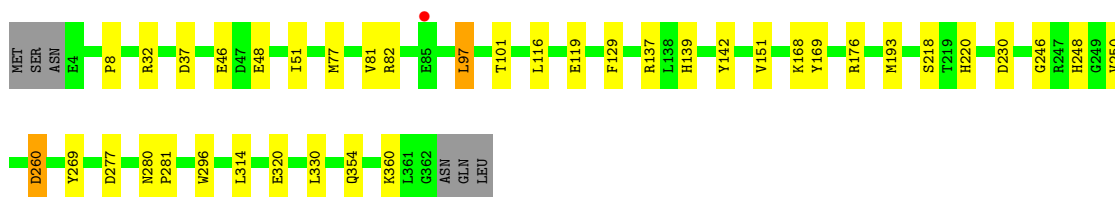
Mol	Chain	Residues	Atoms	ZeroOcc	AltConf
10	A	275	Total O 275 275	0	0
10	B	299	Total O 299 299	0	0
10	C	229	Total O 229 229	0	0
10	D	239	Total O 239 239	0	0

3 Residue-property plots [i](#)


These plots are drawn for all protein, RNA, DNA and oligosaccharide chains in the entry. The first graphic for a chain summarises the proportions of the various outlier classes displayed in the second graphic. The second graphic shows the sequence view annotated by issues in geometry and electron density. Residues are color-coded according to the number of geometric quality criteria for which they contain at least one outlier: green = 0, yellow = 1, orange = 2 and red = 3 or more. A red dot above a residue indicates a poor fit to the electron density ($RSRZ > 2$). Stretches of 2 or more consecutive residues without any outlier are shown as a green connector. Residues present in the sample, but not in the model, are shown in grey.

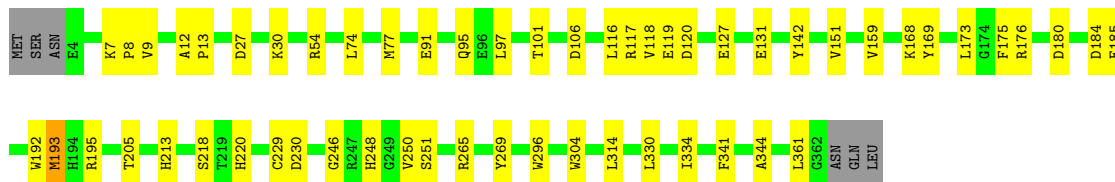
- Molecule 1: Homoprotocatechuate 2,3-dioxygenase

Chain A: 




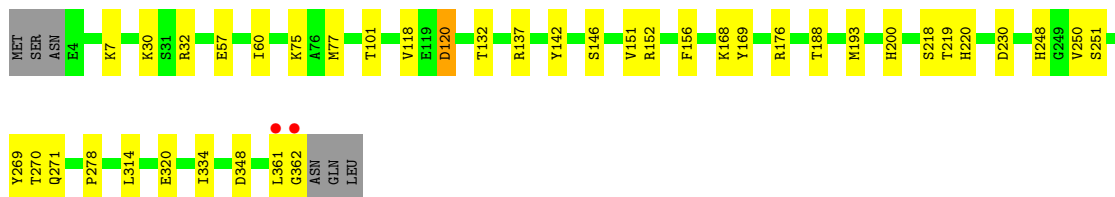
- Molecule 1: Homoprotocatechuate 2,3-dioxygenase

Chain B: 




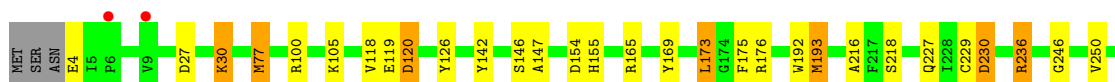
- Molecule 1: Homoprotocatechuate 2,3-dioxygenase

Chain C: 



- Molecule 1: Homoprotocatechuate 2,3-dioxygenase

Chain D: 





4 Data and refinement statistics

Property	Value	Source
Space group	P 21 21 2	Depositor
Cell constants a, b, c, α , β , γ	110.68Å 153.02Å 96.39Å 90.00° 90.00° 90.00°	Depositor
Resolution (Å)	52.70 – 1.95 52.70 – 1.95	Depositor EDS
% Data completeness (in resolution range)	87.8 (52.70-1.95) 87.8 (52.70-1.95)	Depositor EDS
R_{merge}	0.10	Depositor
R_{sym}	(Not available)	Depositor
$\langle I/\sigma(I) \rangle$ ¹	1.90 (at 1.95Å)	Xtrriage
Refinement program	REFMAC 5.2.0005	Depositor
R, R_{free}	0.185 , 0.245 0.189 , 0.248	Depositor DCC
R_{free} test set	5277 reflections (5.03%)	wwPDB-VP
Wilson B-factor (Å ²)	26.7	Xtrriage
Anisotropy	0.144	Xtrriage
Bulk solvent k_{sol} (e/Å ³), B_{sol} (Å ²)	0.34 , 56.5	EDS
L-test for twinning ²	$\langle L \rangle = 0.49$, $\langle L^2 \rangle = 0.33$	Xtrriage
Estimated twinning fraction	No twinning to report.	Xtrriage
F_o, F_c correlation	0.96	EDS
Total number of atoms	12927	wwPDB-VP
Average B, all atoms (Å ²)	32.0	wwPDB-VP

Xtrriage's analysis on translational NCS is as follows: *The largest off-origin peak in the Patterson function is 3.11% of the height of the origin peak. No significant pseudotranslation is detected.*

¹Intensities estimated from amplitudes.

²Theoretical values of $\langle |L| \rangle$, $\langle L^2 \rangle$ for acentric reflections are 0.5, 0.333 respectively for untwinned datasets, and 0.375, 0.2 for perfectly twinned datasets.

5 Model quality [i](#)

5.1 Standard geometry [i](#)

Bond lengths and bond angles in the following residue types are not validated in this section: FE2, XX3, CA, GOL, XX2, CL, OXY, XXP

The Z score for a bond length (or angle) is the number of standard deviations the observed value is removed from the expected value. A bond length (or angle) with $|Z| > 5$ is considered an outlier worth inspection. RMSZ is the root-mean-square of all Z scores of the bond lengths (or angles).

Mol	Chain	Bond lengths		Bond angles	
		RMSZ	# Z >5	RMSZ	# Z >5
1	A	0.91	0/3051	0.84	1/4142 (0.0%)
1	B	0.94	0/3021	0.88	5/4101 (0.1%)
1	C	0.85	0/3024	0.81	3/4106 (0.1%)
1	D	0.84	0/3026	0.81	4/4109 (0.1%)
All	All	0.88	0/12122	0.83	13/16458 (0.1%)

There are no bond length outliers.

The worst 5 of 13 bond angle outliers are listed below:

Mol	Chain	Res	Type	Atoms	Z	Observed(°)	Ideal(°)
1	D	230	ASP	CB-CG-OD1	6.05	123.74	118.30
1	B	54	ARG	NE-CZ-NH2	-5.49	117.55	120.30
1	B	106	ASP	CB-CG-OD1	5.49	123.24	118.30
1	B	265	ARG	NE-CZ-NH1	5.48	123.04	120.30
1	A	277	ASP	CB-CG-OD1	5.33	123.10	118.30

There are no chirality outliers.

There are no planarity outliers.

5.2 Too-close contacts [i](#)

In the following table, the Non-H and H(model) columns list the number of non-hydrogen atoms and hydrogen atoms in the chain respectively. The H(added) column lists the number of hydrogen atoms added and optimized by MolProbity. The Clashes column lists the number of clashes within the asymmetric unit, whereas Symm-Clashes lists symmetry-related clashes.

Mol	Chain	Non-H	H(model)	H(added)	Clashes	Symm-Clashes
1	A	2951	0	2814	25	0
1	B	2930	0	2790	38	0

Continued on next page...

Continued from previous page...

Mol	Chain	Non-H	H(model)	H(added)	Clashes	Symm-Clashes
1	C	2933	0	2789	26	0
1	D	2932	0	2801	27	0
2	A	1	0	0	0	0
2	B	1	0	0	0	0
2	C	1	0	0	0	0
2	D	1	0	0	0	0
3	A	1	0	0	0	0
3	B	1	0	0	0	0
3	C	1	0	0	1	0
3	D	1	0	0	0	0
4	A	13	0	3	6	0
5	A	12	0	16	0	0
5	B	36	0	48	6	0
5	C	18	0	24	2	0
5	D	12	0	16	1	0
6	B	1	0	0	0	0
7	B	13	0	3	2	0
7	D	13	0	3	2	0
8	C	11	0	3	3	0
9	C	2	0	0	3	0
10	A	275	0	0	5	0
10	B	299	0	0	5	0
10	C	229	0	0	6	0
10	D	239	0	0	4	0
All	All	12927	0	11310	119	0

The all-atom clashscore is defined as the number of clashes found per 1000 atoms (including hydrogen atoms). The all-atom clashscore for this structure is 5.

The worst 5 of 119 close contacts within the same asymmetric unit are listed below, sorted by their clash magnitude.

Atom-1	Atom-2	Interatomic distance (Å)	Clash overlap (Å)
7:B:600[B]:XX3:O13	7:B:600[B]:XX3:O12	1.53	1.21
4:A:600[B]:XXP:O10	4:A:600[B]:XXP:C1	1.87	1.21
7:D:600[B]:XX3:O13	7:D:600[B]:XX3:O12	1.54	1.21
1:D:4:GLU:HG2	1:D:165:ARG:HE	1.19	1.01
4:A:600[B]:XXP:O10	4:A:600[B]:XXP:O12	1.88	0.90

There are no symmetry-related clashes.

5.3 Torsion angles [i](#)

5.3.1 Protein backbone [i](#)

In the following table, the Percentiles column shows the percent Ramachandran outliers of the chain as a percentile score with respect to all X-ray entries followed by that with respect to entries of similar resolution.

The Analysed column shows the number of residues for which the backbone conformation was analysed, and the total number of residues.

Mol	Chain	Analysed	Favoured	Allowed	Outliers	Percentiles	
1	A	366/365 (100%)	355 (97%)	11 (3%)	0	100	100
1	B	363/365 (100%)	352 (97%)	10 (3%)	1 (0%)	41	30
1	C	363/365 (100%)	349 (96%)	13 (4%)	1 (0%)	41	30
1	D	363/365 (100%)	352 (97%)	11 (3%)	0	100	100
All	All	1455/1460 (100%)	1408 (97%)	45 (3%)	2 (0%)	51	43

All (2) Ramachandran outliers are listed below:

Mol	Chain	Res	Type
1	B	251	SER
1	C	251	SER

5.3.2 Protein sidechains [i](#)

In the following table, the Percentiles column shows the percent sidechain outliers of the chain as a percentile score with respect to all X-ray entries followed by that with respect to entries of similar resolution.

The Analysed column shows the number of residues for which the sidechain conformation was analysed, and the total number of residues.

Mol	Chain	Analysed	Rotameric	Outliers	Percentiles	
1	A	316/313 (101%)	306 (97%)	10 (3%)	39	27
1	B	313/313 (100%)	307 (98%)	6 (2%)	57	50
1	C	313/313 (100%)	304 (97%)	9 (3%)	42	31
1	D	313/313 (100%)	303 (97%)	10 (3%)	39	27
All	All	1255/1252 (100%)	1220 (97%)	35 (3%)	44	33

5 of 35 residues with a non-rotameric sidechain are listed below:

Mol	Chain	Res	Type
1	D	120	ASP
1	D	146	SER
1	D	193	MET
1	B	168	LYS
1	B	120	ASP

Sometimes sidechains can be flipped to improve hydrogen bonding and reduce clashes. All (1) such sidechains are listed below:

Mol	Chain	Res	Type
1	C	95	GLN

5.3.3 RNA [i](#)

There are no RNA molecules in this entry.

5.4 Non-standard residues in protein, DNA, RNA chains [i](#)

There are no non-standard protein/DNA/RNA residues in this entry.

5.5 Carbohydrates [i](#)

There are no monosaccharides in this entry.

5.6 Ligand geometry [i](#)

Of 27 ligands modelled in this entry, 9 are monoatomic - leaving 18 for Mogul analysis.

In the following table, the Counts columns list the number of bonds (or angles) for which Mogul statistics could be retrieved, the number of bonds (or angles) that are observed in the model and the number of bonds (or angles) that are defined in the Chemical Component Dictionary. The Link column lists molecule types, if any, to which the group is linked. The Z score for a bond length (or angle) is the number of standard deviations the observed value is removed from the expected value. A bond length (or angle) with $|Z| > 2$ is considered an outlier worth inspection. RMSZ is the root-mean-square of all Z scores of the bond lengths (or angles).

Mol	Type	Chain	Res	Link	Bond lengths			Bond angles		
					Counts	RMSZ	$\# Z > 2$	Counts	RMSZ	$\# Z > 2$
5	GOL	A	801	-	5,5,5	0.51	0	5,5,5	1.06	0
5	GOL	B	809	-	5,5,5	0.24	0	5,5,5	1.79	2 (40%)
7	XX3	B	600[B]	-	10,13,13	2.80	6 (60%)	6,19,19	2.52	1 (16%)

Mol	Type	Chain	Res	Link	Bond lengths			Bond angles		
					Counts	RMSZ	# Z > 2	Counts	RMSZ	# Z > 2
7	XX3	D	600[B]	-	10,13,13	2.74	6 (60%)	6,19,19	2.57	1 (16%)
5	GOL	B	806	-	5,5,5	0.47	0	5,5,5	0.34	0
5	GOL	C	807	-	5,5,5	0.45	0	5,5,5	1.10	0
5	GOL	B	812	-	5,5,5	0.32	0	5,5,5	0.36	0
5	GOL	A	811	-	5,5,5	0.31	0	5,5,5	0.34	0
4	XXP	A	600[B]	-	9,12,12	5.16	3 (33%)	8,15,15	1.80	2 (25%)
5	GOL	B	813	-	5,5,5	0.24	0	5,5,5	0.64	0
5	GOL	C	810	-	5,5,5	0.30	0	5,5,5	0.86	0
5	GOL	D	803	-	5,5,5	0.57	0	5,5,5	0.71	0
5	GOL	D	805	-	5,5,5	0.39	0	5,5,5	0.39	0
9	OXY	C	600	-	1,1,1	0.43	0	-	-	-
5	GOL	B	804	-	5,5,5	0.28	0	5,5,5	0.43	0
5	GOL	C	808	-	5,5,5	0.34	0	5,5,5	0.98	0
8	XX2	C	601[B]	-	7,11,11	6.06	5 (71%)	6,15,15	1.89	2 (33%)
5	GOL	B	802	-	5,5,5	0.40	0	5,5,5	1.07	0

In the following table, the Chirals column lists the number of chiral outliers, the number of chiral centers analysed, the number of these observed in the model and the number defined in the Chemical Component Dictionary. Similar counts are reported in the Torsion and Rings columns. ^{1,2} means no outliers of that kind were identified.

Mol	Type	Chain	Res	Link	Chirals	Torsions	Rings
5	GOL	A	801	-	-	1/4/4/4	-
5	GOL	B	809	-	-	2/4/4/4	-
7	XX3	B	600[B]	-	-	0/2/23/23	0/1/1/1
7	XX3	D	600[B]	-	-	0/2/23/23	0/1/1/1
5	GOL	B	806	-	-	2/4/4/4	-
5	GOL	C	807	-	-	0/4/4/4	-
5	GOL	B	812	-	-	2/4/4/4	-
5	GOL	A	811	-	-	2/4/4/4	-
4	XXP	A	600[B]	-	-	3/7/15/15	-
5	GOL	B	813	-	-	2/4/4/4	-
5	GOL	C	810	-	-	2/4/4/4	-
5	GOL	D	803	-	-	2/4/4/4	-
5	GOL	D	805	-	-	2/4/4/4	-
5	GOL	B	804	-	-	2/4/4/4	-
5	GOL	C	808	-	-	2/4/4/4	-
8	XX2	C	601[B]	-	-	0/2/17/17	0/1/1/1
5	GOL	B	802	-	-	4/4/4/4	-

The worst 5 of 20 bond length outliers are listed below:

Mol	Chain	Res	Type	Atoms	Z	Observed(Å)	Ideal(Å)
8	C	601[B]	XX2	O10-N9	14.04	1.46	1.22
4	A	600[B]	XXP	O8-N7	13.12	1.45	1.22
4	A	600[B]	XXP	C4-C5	6.37	1.51	1.44
7	B	600[B]	XX3	C2-C3	-5.31	1.43	1.50
8	C	601[B]	XX2	C3-C4	4.61	1.41	1.33

The worst 5 of 8 bond angle outliers are listed below:

Mol	Chain	Res	Type	Atoms	Z	Observed(°)	Ideal(°)
7	D	600[B]	XX3	C5-C6-C1	-5.81	116.02	122.20
7	B	600[B]	XX3	C5-C6-C1	-5.39	116.46	122.20
8	C	601[B]	XX2	C5-C6-C1	-3.57	118.52	122.06
4	A	600[B]	XXP	C3-C4-C5	3.57	132.84	124.36
5	B	809	GOL	C3-C2-C1	-3.39	98.52	111.70

There are no chirality outliers.

5 of 28 torsion outliers are listed below:

Mol	Chain	Res	Type	Atoms
4	A	600[B]	XXP	C1-C2-C3-C4
4	A	600[B]	XXP	O12-C1-C2-C3
5	B	802	GOL	O1-C1-C2-C3
5	B	804	GOL	O1-C1-C2-C3
5	B	806	GOL	O1-C1-C2-C3

There are no ring outliers.

9 monomers are involved in 23 short contacts:

Mol	Chain	Res	Type	Clashes	Symm-Clashes
7	B	600[B]	XX3	2	0
7	D	600[B]	XX3	2	0
5	B	812	GOL	2	0
4	A	600[B]	XXP	6	0
5	D	805	GOL	1	0
9	C	600	OXY	3	0
5	B	804	GOL	4	0
5	C	808	GOL	2	0
8	C	601[B]	XX2	3	0

5.7 Other polymers [i](#)

There are no such residues in this entry.

5.8 Polymer linkage issues [i](#)

There are no chain breaks in this entry.

6 Fit of model and data [i](#)

6.1 Protein, DNA and RNA chains [i](#)

In the following table, the column labelled ‘#RSRZ> 2’ contains the number (and percentage) of RSRZ outliers, followed by percent RSRZ outliers for the chain as percentile scores relative to all X-ray entries and entries of similar resolution. The OWAB column contains the minimum, median, 95th percentile and maximum values of the occupancy-weighted average B-factor per residue. The column labelled ‘Q< 0.9’ lists the number of (and percentage) of residues with an average occupancy less than 0.9.

Mol	Chain	Analysed	<RSRZ>	#RSRZ>2	OWAB(Å ²)	Q<0.9
1	A	359/365 (98%)	-0.31	1 (0%) 94 96	24, 31, 43, 58	0
1	B	359/365 (98%)	-0.41	0 100 100	22, 28, 38, 49	0
1	C	359/365 (98%)	-0.23	2 (0%) 89 93	23, 33, 44, 57	0
1	D	359/365 (98%)	-0.15	3 (0%) 86 90	23, 32, 46, 59	0
All	All	1436/1460 (98%)	-0.27	6 (0%) 92 95	22, 31, 43, 59	0

The worst 5 of 6 RSRZ outliers are listed below:

Mol	Chain	Res	Type	RSRZ
1	C	362	GLY	2.8
1	A	85	GLU	2.8
1	D	321	ILE	2.4
1	D	9	VAL	2.3
1	D	6	PRO	2.1

6.2 Non-standard residues in protein, DNA, RNA chains [i](#)

There are no non-standard protein/DNA/RNA residues in this entry.

6.3 Carbohydrates [i](#)

There are no monosaccharides in this entry.

6.4 Ligands [i](#)

In the following table, the Atoms column lists the number of modelled atoms in the group and the number defined in the chemical component dictionary. The B-factors column lists the minimum, median, 95th percentile and maximum values of B factors of atoms in the group. The column labelled ‘Q< 0.9’ lists the number of atoms with occupancy less than 0.9.

Mol	Type	Chain	Res	Atoms	RSCC	RSR	B-factors(\AA^2)	Q<0.9
5	GOL	D	805	6/6	0.75	0.24	66,68,68,68	0
5	GOL	B	804	6/6	0.82	0.18	48,50,51,54	0
7	XX3	D	600[B]	13/13	0.83	0.20	20,35,39,42	13
8	XX2	C	601[B]	11/11	0.84	0.20	19,30,38,41	11
5	GOL	C	810	6/6	0.85	0.15	52,52,52,54	0
5	GOL	C	808	6/6	0.85	0.22	55,55,56,56	0
7	XX3	B	600[B]	13/13	0.86	0.23	28,37,43,45	13
5	GOL	D	803	6/6	0.87	0.14	37,38,39,40	0
5	GOL	B	806	6/6	0.88	0.25	53,55,55,55	0
5	GOL	B	813	6/6	0.89	0.21	41,52,55,60	0
5	GOL	B	812	6/6	0.90	0.22	45,49,50,51	0
5	GOL	A	811	6/6	0.90	0.16	57,58,60,61	0
5	GOL	B	809	6/6	0.90	0.14	47,49,50,51	0
5	GOL	C	807	6/6	0.91	0.15	35,44,45,46	0
5	GOL	B	802	6/6	0.91	0.12	30,36,38,39	0
5	GOL	A	801	6/6	0.91	0.09	29,35,38,40	0
4	XXP	A	600[B]	13/13	0.91	0.24	15,27,44,45	13
3	CL	D	700[A]	1/1	0.94	0.21	6,6,6,6	1
3	CL	B	700[A]	1/1	0.95	0.21	6,6,6,6	1
3	CL	A	700[A]	1/1	0.97	0.19	13,13,13,13	1
3	CL	C	700[A]	1/1	0.97	0.15	11,11,11,11	1
9	OXY	C	600	2/2	0.97	0.13	35,35,35,39	0
6	CA	B	701	1/1	0.98	0.12	18,18,18,18	1
2	FE2	D	500	1/1	1.00	0.08	32,32,32,32	0
2	FE2	A	500	1/1	1.00	0.07	31,31,31,31	0
2	FE2	B	500	1/1	1.00	0.07	29,29,29,29	0
2	FE2	C	500	1/1	1.00	0.03	32,32,32,32	0

6.5 Other polymers [\(i\)](#)

There are no such residues in this entry.