



# Full wwPDB X-ray Structure Validation Report ⓘ

Jan 30, 2024 – 07:22 PM EST

PDB ID : 1IIN  
Title : thymidyltransferase complexed with UDP-glucose  
Authors : Barton, W.A.; Lesniak, J.; Biggins, J.B.; Jeffrey, P.D.; Jiang, J.; Rajashankar, K.R.; Thorson, J.S.; Nikolov, D.B.  
Deposited on : 2001-04-23  
Resolution : 2.10 Å(reported)

This is a Full wwPDB X-ray Structure Validation Report for a publicly released PDB entry.

We welcome your comments at [validation@mail.wwpdb.org](mailto:validation@mail.wwpdb.org)

A user guide is available at

<https://www.wwpdb.org/validation/2017/XrayValidationReportHelp>

with specific help available everywhere you see the ⓘ symbol.

The types of validation reports are described at

<http://www.wwpdb.org/validation/2017/FAQs#types>.

---

The following versions of software and data (see [references ⓘ](#)) were used in the production of this report:

MolProbity : 4.02b-467  
Mogul : 1.8.5 (274361), CSD as541be (2020)  
Xtriage (Phenix) : 1.13  
EDS : 2.36  
buster-report : 1.1.7 (2018)  
Percentile statistics : 20191225.v01 (using entries in the PDB archive December 25th 2019)  
Refmac : 5.8.0158  
CCP4 : 7.0.044 (Gargrove)  
Ideal geometry (proteins) : Engh & Huber (2001)  
Ideal geometry (DNA, RNA) : Parkinson et al. (1996)  
Validation Pipeline (wwPDB-VP) : 2.36

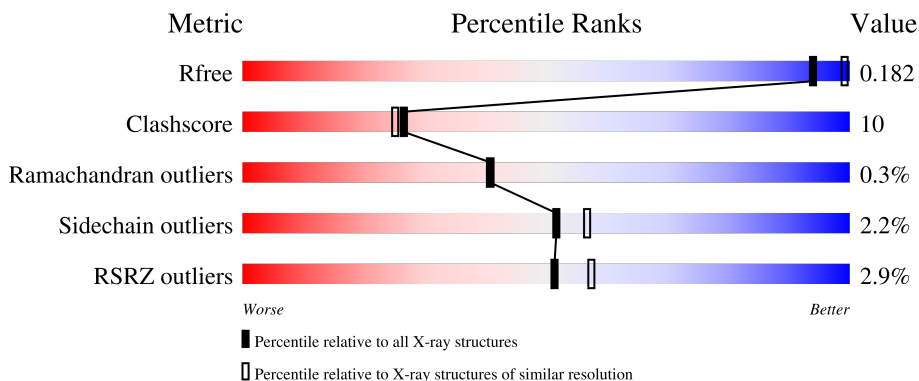
# 1 Overall quality at a glance

The following experimental techniques were used to determine the structure:

*X-RAY DIFFRACTION*

The reported resolution of this entry is 2.10 Å.

Percentile scores (ranging between 0-100) for global validation metrics of the entry are shown in the following graphic. The table shows the number of entries on which the scores are based.



Metric	Whole archive (#Entries)	Similar resolution (#Entries, resolution range(Å))
$R_{free}$	130704	5197 (2.10-2.10)
Clashscore	141614	5710 (2.10-2.10)
Ramachandran outliers	138981	5647 (2.10-2.10)
Sidechain outliers	138945	5648 (2.10-2.10)
RSRZ outliers	127900	5083 (2.10-2.10)

The table below summarises the geometric issues observed across the polymeric chains and their fit to the electron density. The red, orange, yellow and green segments of the lower bar indicate the fraction of residues that contain outliers for  $\geq 3$ , 2, 1 and 0 types of geometric quality criteria respectively. A grey segment represents the fraction of residues that are not modelled. The numeric value for each fraction is indicated below the corresponding segment, with a dot representing fractions  $\leq 5\%$ . The upper red bar (where present) indicates the fraction of residues that have poor fit to the electron density. The numeric value is given above the bar.

Mol	Chain	Length	Quality of chain
1	A	292	 80% 17% ..
1	B	292	 83% 16% ..
1	C	292	 7% 80% 18% ..
1	D	292	 3% 77% 20% ..

## 2 Entry composition

There are 3 unique types of molecules in this entry. The entry contains 9934 atoms, of which 0 are hydrogens and 0 are deuteriums.

In the tables below, the ZeroOcc column contains the number of atoms modelled with zero occupancy, the AltConf column contains the number of residues with at least one atom in alternate conformation and the Trace column contains the number of residues modelled with at most 2 atoms.

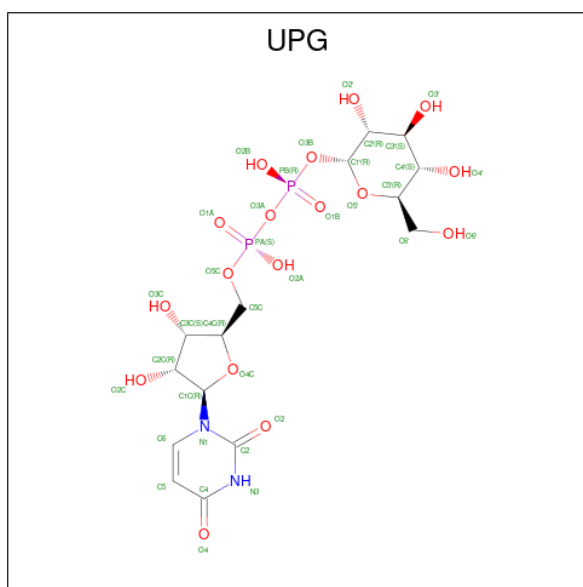
- Molecule 1 is a protein called glucose-1-phosphate thymidyltransferase.

Mol	Chain	Residues	Atoms					ZeroOcc	AltConf	Trace
			Total	C	N	O	S			
1	A	289	2257	1443	375	427	12	0	0	0
1	B	289	2257	1443	375	427	12	0	0	0
1	C	289	2257	1443	375	427	12	0	0	0
1	D	289	2257	1443	375	427	12	0	0	0

There are 4 discrepancies between the modelled and reference sequences:

Chain	Residue	Modelled	Actual	Comment	Reference
A	26	GLN	LYS	conflict	UNP Q9F7K6
B	26	GLN	LYS	conflict	UNP Q9F7K6
C	26	GLN	LYS	conflict	UNP Q9F7K6
D	26	GLN	LYS	conflict	UNP Q9F7K6

- Molecule 2 is URIDINE-5'-DIPHOSPHATE-GLUCOSE (three-letter code: UPG) (formula:  $C_{15}H_{24}N_2O_{17}P_2$ ).



Mol	Chain	Residues	Atoms					ZeroOcc	AltConf
			Total	C	N	O	P		
2	A	1	Total	C	N	O	P	0	0
			36	15	2	17	2		
2	B	1	Total	C	N	O	P	0	0
			36	15	2	17	2		
2	C	1	Total	C	N	O	P	0	0
			36	15	2	17	2		
2	D	1	Total	C	N	O	P	0	0
			36	15	2	17	2		

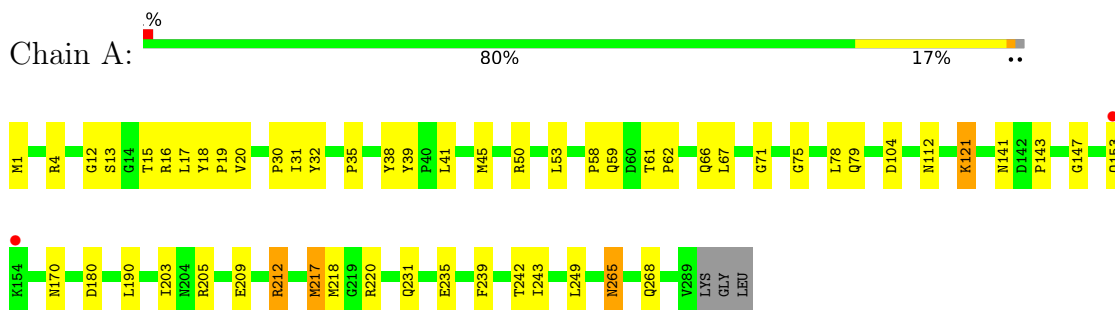
- Molecule 3 is water.

Mol	Chain	Residues	Atoms		ZeroOcc	AltConf
3	A	205	Total	O	0	0
			205	205		
3	B	219	Total	O	0	0
			219	219		
3	C	171	Total	O	0	0
			171	171		
3	D	167	Total	O	0	0
			167	167		

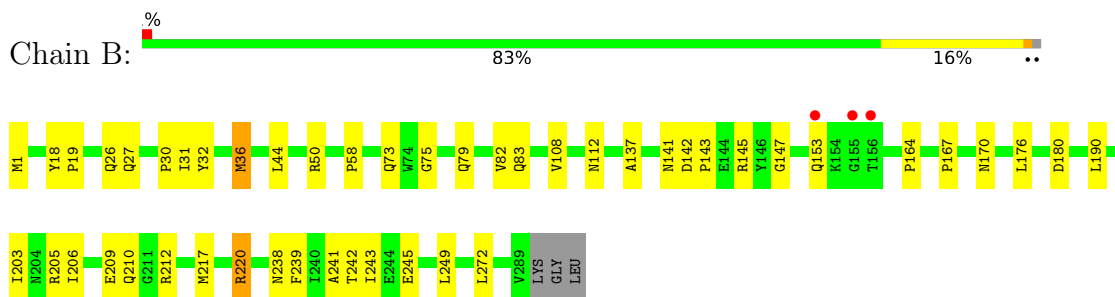
### 3 Residue-property plots [i](#)

These plots are drawn for all protein, RNA, DNA and oligosaccharide chains in the entry. The first graphic for a chain summarises the proportions of the various outlier classes displayed in the second graphic. The second graphic shows the sequence view annotated by issues in geometry and electron density. Residues are color-coded according to the number of geometric quality criteria for which they contain at least one outlier: green = 0, yellow = 1, orange = 2 and red = 3 or more. A red dot above a residue indicates a poor fit to the electron density ( $RSRZ > 2$ ). Stretches of 2 or more consecutive residues without any outlier are shown as a green connector. Residues present in the sample, but not in the model, are shown in grey.

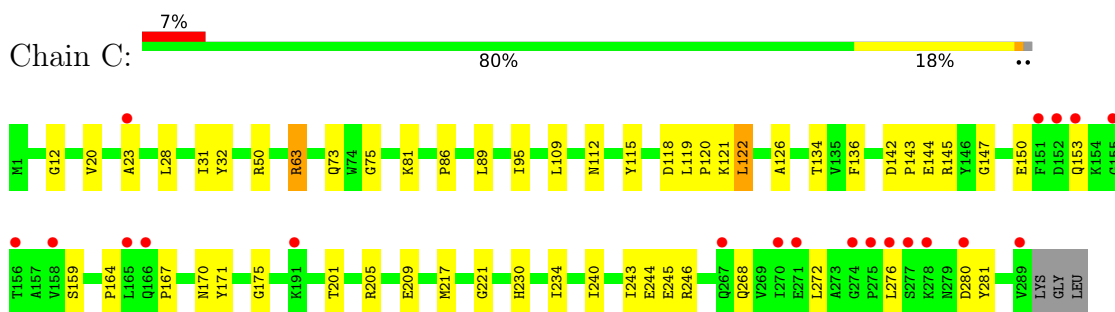
- Molecule 1: glucose-1-phosphate thymidyltransferase



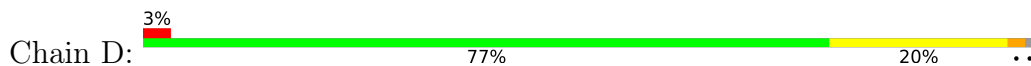
- Molecule 1: glucose-1-phosphate thymidyltransferase

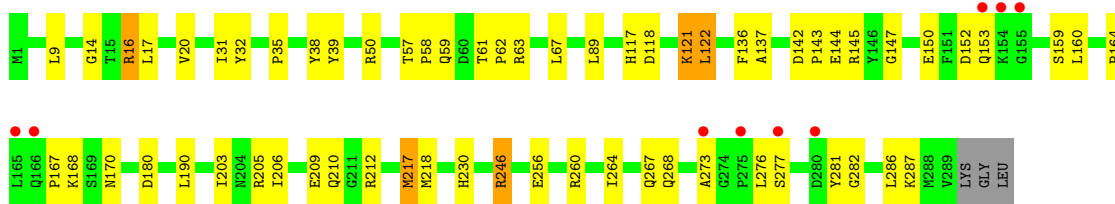


- Molecule 1: glucose-1-phosphate thymidyltransferase



- Molecule 1: glucose-1-phosphate thymidyltransferase





## 4 Data and refinement statistics

Property	Value	Source
Space group	P 21 21 21	Depositor
Cell constants a, b, c, $\alpha$ , $\beta$ , $\gamma$	92.90Å 112.14Å 132.26Å 90.00° 90.00° 90.00°	Depositor
Resolution (Å)	39.83 – 2.10 39.83 – 2.00	Depositor EDS
% Data completeness (in resolution range)	99.1 (39.83-2.10) 98.7 (39.83-2.00)	Depositor EDS
$R_{merge}$	(Not available)	Depositor
$R_{sym}$	(Not available)	Depositor
$\langle I/\sigma(I) \rangle$ <sup>1</sup>	5.73 (at 2.00Å)	Xtrriage
Refinement program	CNS 1.0	Depositor
R, $R_{free}$	0.184 , 0.224 0.182 , 0.182	Depositor DCC
$R_{free}$ test set	8054 reflections (8.57%)	wwPDB-VP
Wilson B-factor (Å <sup>2</sup> )	16.7	Xtrriage
Anisotropy	0.077	Xtrriage
Bulk solvent $k_{sol}$ (e/Å <sup>3</sup> ), $B_{sol}$ (Å <sup>2</sup> )	0.36 , 57.8	EDS
L-test for twinning <sup>2</sup>	$\langle  L  \rangle = 0.49$ , $\langle L^2 \rangle = 0.32$	Xtrriage
Estimated twinning fraction	No twinning to report.	Xtrriage
$F_o, F_c$ correlation	0.94	EDS
Total number of atoms	9934	wwPDB-VP
Average B, all atoms (Å <sup>2</sup> )	20.0	wwPDB-VP

Xtrriage's analysis on translational NCS is as follows: *The largest off-origin peak in the Patterson function is 4.27% of the height of the origin peak. No significant pseudotranslation is detected.*

<sup>1</sup>Intensities estimated from amplitudes.

<sup>2</sup>Theoretical values of  $\langle |L| \rangle$ ,  $\langle L^2 \rangle$  for acentric reflections are 0.5, 0.333 respectively for untwinned datasets, and 0.375, 0.2 for perfectly twinned datasets.

## 5 Model quality [i](#)

### 5.1 Standard geometry [i](#)

Bond lengths and bond angles in the following residue types are not validated in this section: UPG

The Z score for a bond length (or angle) is the number of standard deviations the observed value is removed from the expected value. A bond length (or angle) with  $|Z| > 5$  is considered an outlier worth inspection. RMSZ is the root-mean-square of all Z scores of the bond lengths (or angles).

Mol	Chain	Bond lengths		Bond angles	
		RMSZ	# Z  >5	RMSZ	# Z  >5
1	A	0.59	2/2304 (0.1%)	0.78	2/3121 (0.1%)
1	B	0.60	1/2304 (0.0%)	0.78	2/3121 (0.1%)
1	C	0.54	0/2304	0.78	2/3121 (0.1%)
1	D	0.55	0/2304	0.80	2/3121 (0.1%)
All	All	0.57	3/9216 (0.0%)	0.78	8/12484 (0.1%)

All (3) bond length outliers are listed below:

Mol	Chain	Res	Type	Atoms	Z	Observed(Å)	Ideal(Å)
1	B	36	MET	SD-CE	-6.76	1.40	1.77
1	A	217	MET	SD-CE	6.60	2.14	1.77
1	A	218	MET	SD-CE	-5.15	1.49	1.77

All (8) bond angle outliers are listed below:

Mol	Chain	Res	Type	Atoms	Z	Observed(°)	Ideal(°)
1	A	147	GLY	N-CA-C	-5.83	98.53	113.10
1	D	50	ARG	NE-CZ-NH2	-5.72	117.44	120.30
1	D	147	GLY	N-CA-C	-5.50	99.34	113.10
1	B	147	GLY	N-CA-C	-5.38	99.66	113.10
1	B	31	ILE	N-CA-C	-5.31	96.67	111.00
1	A	212	ARG	NE-CZ-NH2	-5.18	117.71	120.30
1	C	147	GLY	N-CA-C	-5.18	100.14	113.10
1	C	31	ILE	N-CA-C	-5.02	97.45	111.00

There are no chirality outliers.

There are no planarity outliers.



## 5.2 Too-close contacts [i](#)

In the following table, the Non-H and H(model) columns list the number of non-hydrogen atoms and hydrogen atoms in the chain respectively. The H(added) column lists the number of hydrogen atoms added and optimized by MolProbity. The Clashes column lists the number of clashes within the asymmetric unit, whereas Symm-Clashes lists symmetry-related clashes.

Mol	Chain	Non-H	H(model)	H(added)	Clashes	Symm-Clashes
1	A	2257	0	2253	47	0
1	B	2257	0	2253	46	1
1	C	2257	0	2253	47	0
1	D	2257	0	2253	57	0
2	A	36	0	22	1	0
2	B	36	0	22	2	0
2	C	36	0	22	3	0
2	D	36	0	22	0	0
3	A	205	0	0	5	1
3	B	219	0	0	3	0
3	C	171	0	0	3	0
3	D	167	0	0	4	0
All	All	9934	0	9100	188	1

The all-atom clashscore is defined as the number of clashes found per 1000 atoms (including hydrogen atoms). The all-atom clashscore for this structure is 10.

All (188) close contacts within the same asymmetric unit are listed below, sorted by their clash magnitude.

Atom-1	Atom-2	Interatomic distance (Å)	Clash overlap (Å)
1:A:217:MET:CE	1:A:217:MET:SD	2.14	1.36
1:D:121:LYS:HD2	1:D:121:LYS:H	0.97	1.09
1:D:121:LYS:HD2	1:D:121:LYS:N	1.76	0.99
1:D:121:LYS:H	1:D:121:LYS:CD	1.76	0.98
1:B:83:GLN:HE22	2:B:1502:UPG:HN3	1.12	0.98
1:B:27:GLN:HA	1:B:36:MET:HE3	1.49	0.95
1:B:27:GLN:HA	1:B:36:MET:CE	1.98	0.93
1:D:217:MET:HA	1:D:217:MET:HE2	1.52	0.90
1:B:108:VAL:HG12	1:B:176:LEU:CD1	2.07	0.83
1:C:118:ASP:OD2	1:C:121:LYS:HE3	1.78	0.83
1:D:142:ASP:OD2	1:D:145:ARG:HD3	1.78	0.83
1:C:118:ASP:CG	1:C:121:LYS:HE3	2.02	0.79
1:C:205:ARG:O	1:C:209:GLU:HG3	1.83	0.78
1:C:153:GLN:H	1:C:153:GLN:CD	1.90	0.75
1:B:108:VAL:HG12	1:B:176:LEU:HD13	1.67	0.75

*Continued on next page...*

*Continued from previous page...*

Atom-1	Atom-2	Interatomic distance (Å)	Clash overlap (Å)
1:A:121:LYS:H	1:A:121:LYS:HD2	1.53	0.73
1:C:201:THR:HG22	1:C:205:ARG:HH21	1.54	0.72
1:B:180:ASP:OD2	1:B:212:ARG:NH2	2.22	0.72
1:D:153:GLN:H	1:D:153:GLN:CD	1.93	0.71
1:D:267:GLN:N	1:D:267:GLN:OE1	2.25	0.70
1:A:249:LEU:HD23	1:B:220:ARG:HB2	1.73	0.69
1:A:4:ARG:HG2	3:A:1700:HOH:O	1.91	0.69
1:D:118:ASP:OD2	1:D:121:LYS:NZ	2.26	0.69
1:B:30:PRO:HB3	1:C:20:VAL:HG13	1.75	0.69
1:A:58:PRO:HG2	1:A:59:GLN:NE2	2.08	0.68
1:D:58:PRO:HG2	1:D:59:GLN:NE2	2.09	0.67
3:A:1553:HOH:O	1:D:230:HIS:HD2	1.78	0.67
1:C:221:GLY:HA3	1:D:117:HIS:HA	1.77	0.66
1:A:265:ASN:ND2	1:A:268:GLN:H	1.94	0.66
1:B:44:LEU:HD21	1:B:108:VAL:HG13	1.78	0.66
1:A:265:ASN:C	1:A:265:ASN:HD22	1.99	0.65
1:A:242:THR:HG21	1:B:239:PHE:HA	1.79	0.65
1:A:180:ASP:OD2	1:A:212:ARG:NH2	2.30	0.64
1:B:108:VAL:HG12	1:B:176:LEU:HD12	1.80	0.64
1:C:276:LEU:HD13	1:C:281:TYR:CD2	2.33	0.64
1:D:190:LEU:HD11	1:D:203:ILE:HG13	1.78	0.64
1:B:137:ALA:O	1:B:217:MET:HE3	1.98	0.64
1:D:118:ASP:CG	1:D:121:LYS:NZ	2.52	0.63
1:A:205:ARG:O	1:A:209:GLU:HG3	1.98	0.63
1:D:118:ASP:CB	1:D:121:LYS:HD3	2.29	0.63
1:C:23:ALA:HB3	3:C:1577:HOH:O	1.99	0.62
1:D:217:MET:HE2	1:D:217:MET:CA	2.28	0.62
1:A:30:PRO:HB3	1:D:20:VAL:HG13	1.80	0.62
1:A:153:GLN:CD	1:A:153:GLN:H	2.02	0.62
1:B:241:ALA:O	1:B:245:GLU:HG2	1.99	0.62
1:A:121:LYS:H	1:A:121:LYS:CD	2.13	0.62
1:D:206:ILE:O	1:D:210:GLN:HG3	2.00	0.61
1:C:28:LEU:HD11	1:C:63:ARG:HB2	1.82	0.61
1:B:26:GLN:O	1:B:36:MET:HE2	2.01	0.61
1:D:118:ASP:HB3	1:D:121:LYS:HD3	1.82	0.61
1:A:17:LEU:O	1:A:20:VAL:HG22	2.00	0.60
1:B:27:GLN:HA	1:B:36:MET:HE2	1.84	0.60
1:D:180:ASP:OD2	1:D:212:ARG:NH2	2.35	0.60
1:D:145:ARG:NH2	3:D:1666:HOH:O	2.35	0.59
1:D:276:LEU:HD13	1:D:281:TYR:CD2	2.39	0.57
1:B:58:PRO:HG3	1:B:82:VAL:HG11	1.85	0.57

*Continued on next page...*

*Continued from previous page...*

Atom-1	Atom-2	Interatomic distance (Å)	Clash overlap (Å)
1:C:86:PRO:HB2	2:C:1503:UPG:N3	2.20	0.57
3:B:1589:HOH:O	1:C:230:HIS:HD2	1.86	0.57
1:B:58:PRO:HG3	1:B:82:VAL:CG1	2.35	0.57
1:C:143:PRO:HD2	1:C:144:GLU:OE2	2.05	0.56
1:B:249:LEU:HD12	1:B:249:LEU:C	2.26	0.56
1:C:153:GLN:CD	1:C:153:GLN:N	2.58	0.55
1:B:142:ASP:OD2	1:B:145:ARG:HD3	2.06	0.55
1:C:118:ASP:HB3	1:C:121:LYS:HG2	1.89	0.55
1:A:242:THR:HG23	3:B:1514:HOH:O	2.06	0.55
1:D:58:PRO:HG2	1:D:59:GLN:HE22	1.71	0.55
1:D:150:GLU:OE1	1:D:168:LYS:HD3	2.07	0.55
1:D:143:PRO:CG	1:D:170:ASN:HA	2.37	0.55
1:C:246:ARG:HG2	3:D:1551:HOH:O	2.06	0.55
1:C:143:PRO:CG	1:C:170:ASN:HA	2.38	0.54
1:C:73:GLN:HB2	1:C:272:LEU:HD21	1.88	0.54
1:C:12:GLY:HA2	2:C:1503:UPG:O2	2.07	0.54
1:D:150:GLU:HB3	1:D:159:SER:OG	2.09	0.53
1:A:217:MET:HB3	1:A:217:MET:HE3	1.91	0.53
1:B:153:GLN:H	1:B:153:GLN:CD	2.12	0.53
1:C:142:ASP:OD2	1:C:145:ARG:HD3	2.09	0.53
1:D:35:PRO:HG2	1:D:38:TYR:CD1	2.45	0.52
1:B:142:ASP:N	1:B:143:PRO:HD3	2.23	0.52
1:C:143:PRO:HG2	1:C:170:ASN:HA	1.91	0.52
1:B:205:ARG:O	1:B:209:GLU:HG3	2.10	0.52
1:B:83:GLN:NE2	2:B:1502:UPG:HN3	1.95	0.52
1:D:267:GLN:H	1:D:267:GLN:CD	2.14	0.52
1:A:1:MET:HG3	3:A:1703:HOH:O	2.10	0.51
1:B:137:ALA:O	1:B:217:MET:CE	2.58	0.51
1:D:143:PRO:HG2	1:D:170:ASN:HA	1.92	0.51
1:D:164:PRO:HG2	1:D:167:PRO:HG3	1.92	0.51
1:B:206:ILE:O	1:B:210:GLN:HG3	2.10	0.51
1:D:9:LEU:HD23	1:D:89:LEU:HD22	1.93	0.51
1:C:81:LYS:HD3	1:C:95:ILE:HG23	1.92	0.51
1:C:81:LYS:HD3	1:C:95:ILE:CG2	2.40	0.51
1:A:121:LYS:HD2	1:A:121:LYS:N	2.23	0.50
1:A:13:SER:OG	1:A:15:THR:HG23	2.11	0.50
1:A:217:MET:CE	1:A:217:MET:HB3	2.42	0.50
1:D:61:THR:N	1:D:62:PRO:HD2	2.27	0.50
1:D:118:ASP:CG	1:D:121:LYS:HZ2	2.15	0.49
1:B:164:PRO:HG2	1:B:167:PRO:HG3	1.95	0.49
1:D:122:LEU:HD22	1:D:136:PHE:CE2	2.48	0.49

*Continued on next page...*

*Continued from previous page...*

Atom-1	Atom-2	Interatomic distance (Å)	Clash overlap (Å)
1:A:265:ASN:HD21	1:A:268:GLN:HG3	1.78	0.48
1:B:26:GLN:HG2	1:B:36:MET:CE	2.44	0.48
1:C:50:ARG:HD2	1:C:75:GLY:O	2.13	0.48
1:B:220:ARG:NE	1:B:220:ARG:H	2.12	0.47
1:C:144:GLU:H	1:C:144:GLU:CD	2.15	0.47
1:D:122:LEU:HD22	1:D:136:PHE:HE2	1.79	0.47
1:A:18:TYR:HB3	1:D:276:LEU:HD23	1.96	0.47
1:C:150:GLU:HB3	1:C:159:SER:OG	2.14	0.47
1:A:4:ARG:HH11	1:A:4:ARG:CG	2.27	0.47
1:B:44:LEU:HD21	1:B:108:VAL:CG1	2.44	0.47
1:B:210:GLN:OE1	1:B:212:ARG:NH1	2.33	0.47
1:D:256:GLU:O	1:D:260:ARG:HG2	2.14	0.47
1:B:18:TYR:HB3	1:C:276:LEU:HD23	1.97	0.47
1:D:63:ARG:HG2	1:D:63:ARG:HH11	1.80	0.47
1:D:205:ARG:O	1:D:209:GLU:HG3	2.15	0.47
1:A:16:ARG:NE	3:A:1554:HOH:O	2.47	0.47
1:D:144:GLU:CD	1:D:144:GLU:H	2.17	0.47
1:D:264:ILE:HB	1:D:268:GLN:HG2	1.96	0.47
1:A:104:ASP:OD1	1:A:180:ASP:HA	2.15	0.47
1:A:4:ARG:HH11	1:A:4:ARG:HG3	1.80	0.46
1:C:122:LEU:HD22	1:C:136:PHE:HE2	1.80	0.46
1:B:143:PRO:CG	1:B:170:ASN:HA	2.46	0.46
1:A:217:MET:CE	1:A:217:MET:CB	2.94	0.46
1:D:246:ARG:NH1	3:D:1519:HOH:O	2.41	0.46
1:C:115:TYR:CZ	1:C:243:ILE:HD13	2.50	0.46
1:C:268:GLN:HB3	3:C:1634:HOH:O	2.15	0.46
1:D:17:LEU:O	1:D:230:HIS:HE1	1.98	0.46
1:B:141:ASN:C	1:B:143:PRO:HD3	2.36	0.46
1:D:57:THR:HB	1:D:58:PRO:HD2	1.98	0.45
1:D:59:GLN:H	1:D:59:GLN:CD	2.18	0.45
1:C:86:PRO:HB2	2:C:1503:UPG:C2	2.47	0.45
1:A:12:GLY:HA3	2:A:1501:UPG:O2C	2.16	0.45
1:B:73:GLN:HB2	1:B:272:LEU:HD21	1.98	0.45
1:C:63:ARG:HH11	1:C:63:ARG:HB3	1.81	0.45
1:A:143:PRO:CG	1:A:170:ASN:HA	2.46	0.45
1:C:112:ASN:ND2	1:C:175:GLY:H	2.14	0.45
1:B:143:PRO:HG2	1:B:170:ASN:HA	1.99	0.45
1:C:112:ASN:HD21	1:C:175:GLY:H	1.65	0.45
1:A:35:PRO:HG2	1:A:38:TYR:CD1	2.53	0.44
1:C:245:GLU:HG3	3:C:1668:HOH:O	2.17	0.44
1:A:61:THR:N	1:A:62:PRO:HD2	2.33	0.44

*Continued on next page...*

*Continued from previous page...*

Atom-1	Atom-2	Interatomic distance (Å)	Clash overlap (Å)
1:C:119:LEU:N	1:C:120:PRO:CD	2.81	0.44
1:C:240:ILE:O	1:C:244:GLU:HG3	2.17	0.44
1:D:143:PRO:HD2	1:D:144:GLU:OE2	2.18	0.44
1:B:50:ARG:HD2	1:B:75:GLY:O	2.18	0.44
1:B:210:GLN:OE1	1:B:212:ARG:HD3	2.18	0.44
1:D:142:ASP:OD2	1:D:145:ARG:CD	2.58	0.44
3:B:1650:HOH:O	1:C:280:ASP:HB3	2.17	0.43
1:C:142:ASP:OD2	1:C:145:ARG:CD	2.66	0.43
1:D:63:ARG:HG2	1:D:63:ARG:NH1	2.33	0.43
1:A:249:LEU:C	1:A:249:LEU:HD12	2.39	0.43
1:B:26:GLN:HG2	1:B:36:MET:HE1	1.99	0.43
1:B:220:ARG:H	1:B:220:ARG:CD	2.31	0.43
1:C:171:TYR:CE2	1:C:217:MET:HE1	2.53	0.43
1:A:66:GLN:HG2	3:D:1670:HOH:O	2.17	0.43
1:A:231:GLN:O	1:A:235:GLU:HG3	2.19	0.43
1:A:265:ASN:ND2	1:A:265:ASN:C	2.71	0.43
1:B:238:ASN:OD1	1:C:234:ILE:HD11	2.19	0.43
1:A:265:ASN:ND2	1:A:268:GLN:HG3	2.33	0.43
1:D:31:ILE:HB	1:D:39:TYR:CE1	2.53	0.43
1:D:218:MET:HE2	1:D:218:MET:HB2	1.79	0.43
1:C:276:LEU:HD13	1:C:281:TYR:HD2	1.79	0.42
1:A:41:LEU:CD1	1:A:45:MET:SD	3.08	0.42
1:D:160:LEU:O	1:D:205:ARG:NH2	2.51	0.42
1:B:27:GLN:HG3	1:B:36:MET:CE	2.50	0.42
1:D:137:ALA:O	1:D:217:MET:CE	2.68	0.42
1:A:31:ILE:HB	1:A:39:TYR:CE1	2.55	0.42
1:A:50:ARG:HD2	1:A:75:GLY:O	2.20	0.42
1:D:14:GLY:H	1:D:16:ARG:NH2	2.18	0.41
1:D:277:SER:HA	1:D:282:GLY:HA3	2.02	0.41
1:B:27:GLN:CA	1:B:36:MET:HE3	2.35	0.41
1:C:89:LEU:HD13	1:C:109:LEU:HD21	2.01	0.41
1:D:153:GLN:H	1:D:153:GLN:NE2	2.18	0.41
1:D:273:ALA:HB1	1:D:286:LEU:HG	2.02	0.41
1:C:122:LEU:HD22	1:C:136:PHE:CE2	2.56	0.41
1:A:141:ASN:C	1:A:143:PRO:HD3	2.40	0.41
1:C:164:PRO:HG2	1:C:167:PRO:HG3	2.02	0.41
1:A:190:LEU:HD11	1:A:203:ILE:HG13	2.02	0.41
1:A:217:MET:HE3	1:A:217:MET:CB	2.51	0.41
1:A:242:THR:HG22	1:B:239:PHE:HD1	1.86	0.41
1:B:242:THR:HG23	1:B:243:ILE:N	2.36	0.41
1:C:115:TYR:CE1	1:C:243:ILE:HD13	2.55	0.41

*Continued on next page...*

Continued from previous page...

Atom-1	Atom-2	Interatomic distance (Å)	Clash overlap (Å)
1:C:126:ALA:HB2	1:C:134:THR:HG21	2.03	0.41
1:A:71:GLY:HA3	1:A:78:LEU:HG	2.03	0.41
1:A:239:PHE:O	1:A:243:ILE:HD13	2.21	0.41
1:D:118:ASP:CA	1:D:121:LYS:HD3	2.51	0.41
1:A:41:LEU:HD13	1:A:45:MET:SD	2.62	0.40
1:A:16:ARG:HG3	3:A:1554:HOH:O	2.20	0.40
1:B:190:LEU:HD11	1:B:203:ILE:HG13	2.03	0.40
1:B:220:ARG:N	1:B:220:ARG:HD2	2.36	0.40
1:D:152:ASP:OD1	1:D:152:ASP:C	2.60	0.40

All (1) symmetry-related close contacts are listed below. The label for Atom-2 includes the symmetry operator and encoded unit-cell translations to be applied.

Atom-1	Atom-2	Interatomic distance (Å)	Clash overlap (Å)
1:B:1:MET:N	3:A:1513:HOH:O[2_564]	1.66	0.54

## 5.3 Torsion angles [i](#)

### 5.3.1 Protein backbone [i](#)

In the following table, the Percentiles column shows the percent Ramachandran outliers of the chain as a percentile score with respect to all X-ray entries followed by that with respect to entries of similar resolution.

The Analysed column shows the number of residues for which the backbone conformation was analysed, and the total number of residues.

Mol	Chain	Analysed	Favoured	Allowed	Outliers	Percentiles	
1	A	287/292 (98%)	284 (99%)	2 (1%)	1 (0%)	41	41
1	B	287/292 (98%)	282 (98%)	4 (1%)	1 (0%)	41	41
1	C	287/292 (98%)	281 (98%)	5 (2%)	1 (0%)	41	41
1	D	287/292 (98%)	280 (98%)	6 (2%)	1 (0%)	41	41
All	All	1148/1168 (98%)	1127 (98%)	17 (2%)	4 (0%)	41	41

All (4) Ramachandran outliers are listed below:

Mol	Chain	Res	Type
1	A	32	TYR

Continued on next page...

*Continued from previous page...*

Mol	Chain	Res	Type
1	B	32	TYR
1	C	32	TYR
1	D	32	TYR

### 5.3.2 Protein sidechains [i](#)

In the following table, the Percentiles column shows the percent sidechain outliers of the chain as a percentile score with respect to all X-ray entries followed by that with respect to entries of similar resolution.

The Analysed column shows the number of residues for which the sidechain conformation was analysed, and the total number of residues.

Mol	Chain	Analysed	Rotameric	Outliers	Percentiles	
1	A	242/245 (99%)	234 (97%)	8 (3%)	38	40
1	B	242/245 (99%)	238 (98%)	4 (2%)	60	67
1	C	242/245 (99%)	240 (99%)	2 (1%)	81	86
1	D	242/245 (99%)	235 (97%)	7 (3%)	42	46
All	All	968/980 (99%)	947 (98%)	21 (2%)	52	57

All (21) residues with a non-rotameric sidechain are listed below:

Mol	Chain	Res	Type
1	A	19	PRO
1	A	53	LEU
1	A	67	LEU
1	A	79	GLN
1	A	112	ASN
1	A	121	LYS
1	A	220	ARG
1	A	265	ASN
1	B	19	PRO
1	B	79	GLN
1	B	112	ASN
1	B	220	ARG
1	C	63	ARG
1	C	122	LEU
1	D	16	ARG
1	D	67	LEU
1	D	121	LYS
1	D	122	LEU

*Continued on next page...*

*Continued from previous page...*

Mol	Chain	Res	Type
1	D	217	MET
1	D	246	ARG
1	D	287	LYS

Sometimes sidechains can be flipped to improve hydrogen bonding and reduce clashes. All (12) such sidechains are listed below:

Mol	Chain	Res	Type
1	A	59	GLN
1	A	66	GLN
1	A	265	ASN
1	B	26	GLN
1	B	66	GLN
1	B	83	GLN
1	C	26	GLN
1	C	112	ASN
1	C	230	HIS
1	D	26	GLN
1	D	112	ASN
1	D	230	HIS

### 5.3.3 RNA [i](#)

There are no RNA molecules in this entry.

### 5.4 Non-standard residues in protein, DNA, RNA chains [i](#)

There are no non-standard protein/DNA/RNA residues in this entry.

### 5.5 Carbohydrates [i](#)

There are no monosaccharides in this entry.

### 5.6 Ligand geometry [i](#)

4 ligands are modelled in this entry.

In the following table, the Counts columns list the number of bonds (or angles) for which Mogul statistics could be retrieved, the number of bonds (or angles) that are observed in the model and the number of bonds (or angles) that are defined in the Chemical Component Dictionary. The



Link column lists molecule types, if any, to which the group is linked. The Z score for a bond length (or angle) is the number of standard deviations the observed value is removed from the expected value. A bond length (or angle) with  $|Z| > 2$  is considered an outlier worth inspection. RMSZ is the root-mean-square of all Z scores of the bond lengths (or angles).

Mol	Type	Chain	Res	Link	Bond lengths			Bond angles		
					Counts	RMSZ	# Z  > 2	Counts	RMSZ	# Z  > 2
2	UPG	C	1503	-	35,38,38	1.46	6 (17%)	53,58,58	1.45	7 (13%)
2	UPG	B	1502	-	35,38,38	1.28	2 (5%)	53,58,58	1.14	2 (3%)
2	UPG	A	1501	-	35,38,38	1.27	4 (11%)	53,58,58	1.14	2 (3%)
2	UPG	D	1504	-	35,38,38	1.36	3 (8%)	53,58,58	1.15	2 (3%)

In the following table, the Chirals column lists the number of chiral outliers, the number of chiral centers analysed, the number of these observed in the model and the number defined in the Chemical Component Dictionary. Similar counts are reported in the Torsion and Rings columns. '-' means no outliers of that kind were identified.

Mol	Type	Chain	Res	Link	Chirals	Torsions	Rings
2	UPG	C	1503	-	-	4/23/59/59	0/3/3/3
2	UPG	B	1502	-	-	2/23/59/59	0/3/3/3
2	UPG	A	1501	-	-	2/23/59/59	0/3/3/3
2	UPG	D	1504	-	-	3/23/59/59	0/3/3/3

All (15) bond length outliers are listed below:

Mol	Chain	Res	Type	Atoms	Z	Observed(Å)	Ideal(Å)
2	D	1504	UPG	O5'-C1'	5.56	1.56	1.41
2	C	1503	UPG	O5'-C1'	4.81	1.54	1.41
2	A	1501	UPG	O5'-C1'	4.77	1.54	1.41
2	B	1502	UPG	O5'-C1'	4.62	1.53	1.41
2	C	1503	UPG	C3'-C2'	2.81	1.59	1.52
2	C	1503	UPG	C1C-N1	2.63	1.55	1.47
2	B	1502	UPG	C4-N3	2.55	1.43	1.38
2	A	1501	UPG	C4'-C5'	2.52	1.58	1.53
2	D	1504	UPG	C2-N1	2.50	1.42	1.38
2	C	1503	UPG	PB-O2B	-2.46	1.43	1.55
2	A	1501	UPG	C3'-C2'	2.26	1.58	1.52
2	C	1503	UPG	PB-O1B	2.18	1.58	1.50
2	C	1503	UPG	C6-N1	2.17	1.43	1.38
2	D	1504	UPG	C3'-C2'	2.09	1.57	1.52
2	A	1501	UPG	C2-N1	2.08	1.41	1.38

All (13) bond angle outliers are listed below:

Mol	Chain	Res	Type	Atoms	Z	Observed(°)	Ideal(°)
2	A	1501	UPG	PB-O3A-PA	-3.97	119.20	132.83
2	C	1503	UPG	O3C-C3C-C4C	3.96	122.49	111.05
2	B	1502	UPG	PB-O3A-PA	-3.92	119.39	132.83
2	C	1503	UPG	PB-O3A-PA	-3.89	119.48	132.83
2	C	1503	UPG	O5'-C1'-O3B	-3.77	106.44	111.36
2	D	1504	UPG	PB-O3A-PA	-3.70	120.13	132.83
2	D	1504	UPG	O3C-C3C-C4C	3.07	119.91	111.05
2	B	1502	UPG	O3C-C3C-C4C	3.06	119.91	111.05
2	A	1501	UPG	O3C-C3C-C4C	3.05	119.88	111.05
2	C	1503	UPG	O4C-C1C-N1	2.71	114.56	108.36
2	C	1503	UPG	C3C-C2C-C1C	2.44	106.06	101.43
2	C	1503	UPG	O2-C2-N1	-2.19	119.88	122.79
2	C	1503	UPG	O5C-PA-O1A	2.11	117.31	109.07

There are no chirality outliers.

All (11) torsion outliers are listed below:

Mol	Chain	Res	Type	Atoms
2	A	1501	UPG	O4C-C4C-C5C-O5C
2	B	1502	UPG	O4C-C4C-C5C-O5C
2	C	1503	UPG	O4C-C4C-C5C-O5C
2	D	1504	UPG	O4C-C4C-C5C-O5C
2	A	1501	UPG	C3C-C4C-C5C-O5C
2	B	1502	UPG	C3C-C4C-C5C-O5C
2	C	1503	UPG	C3C-C4C-C5C-O5C
2	D	1504	UPG	C3C-C4C-C5C-O5C
2	C	1503	UPG	C4'-C5'-C6'-O6'
2	C	1503	UPG	O5'-C5'-C6'-O6'
2	D	1504	UPG	O5'-C5'-C6'-O6'

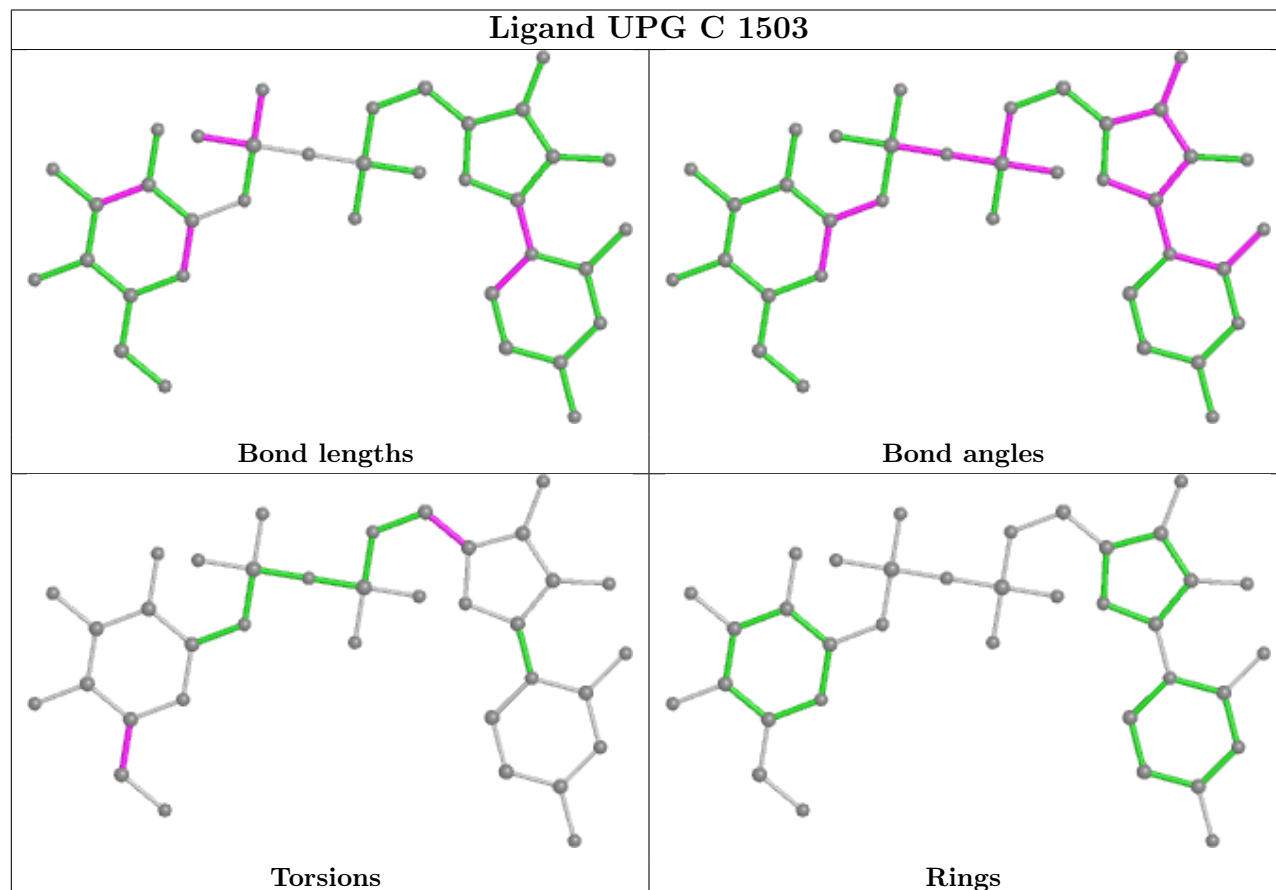
There are no ring outliers.

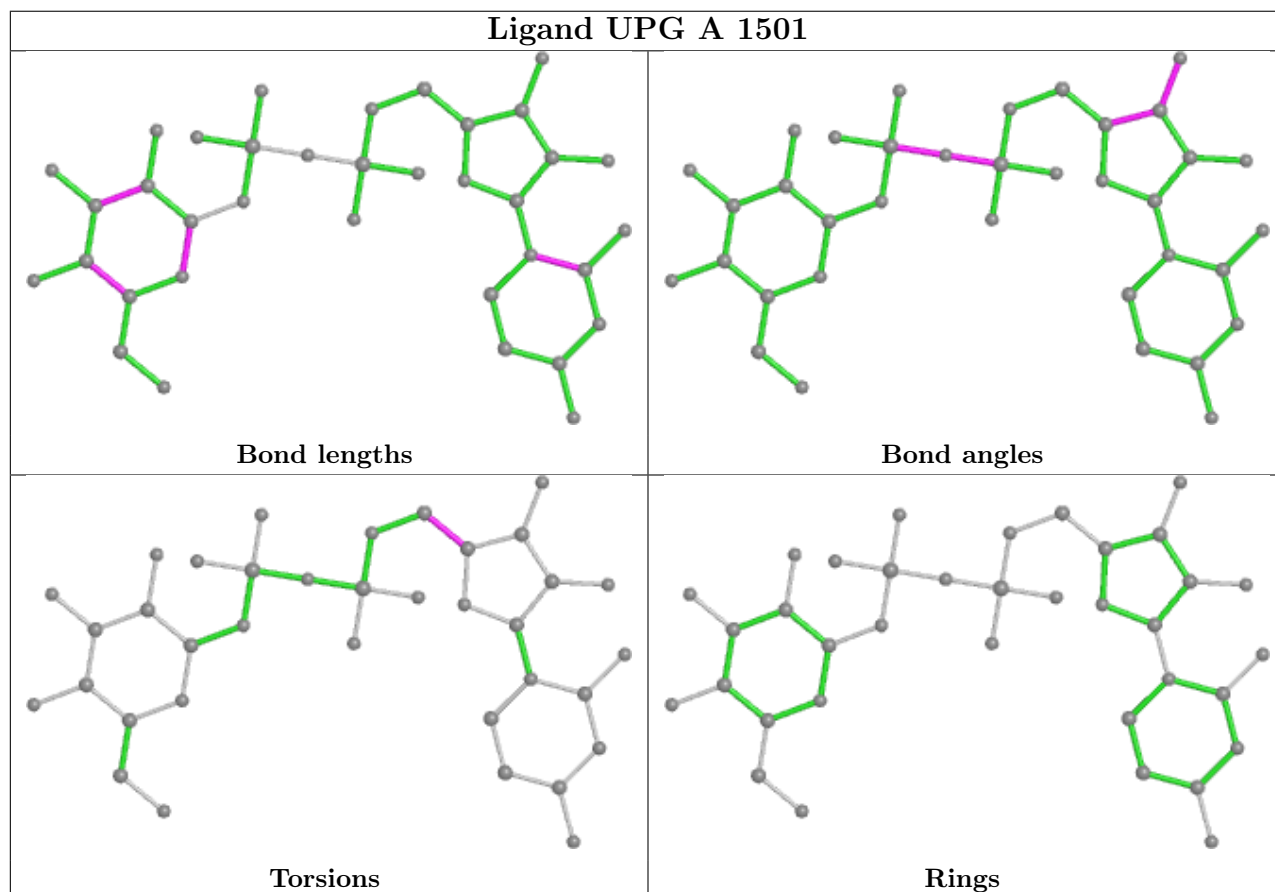
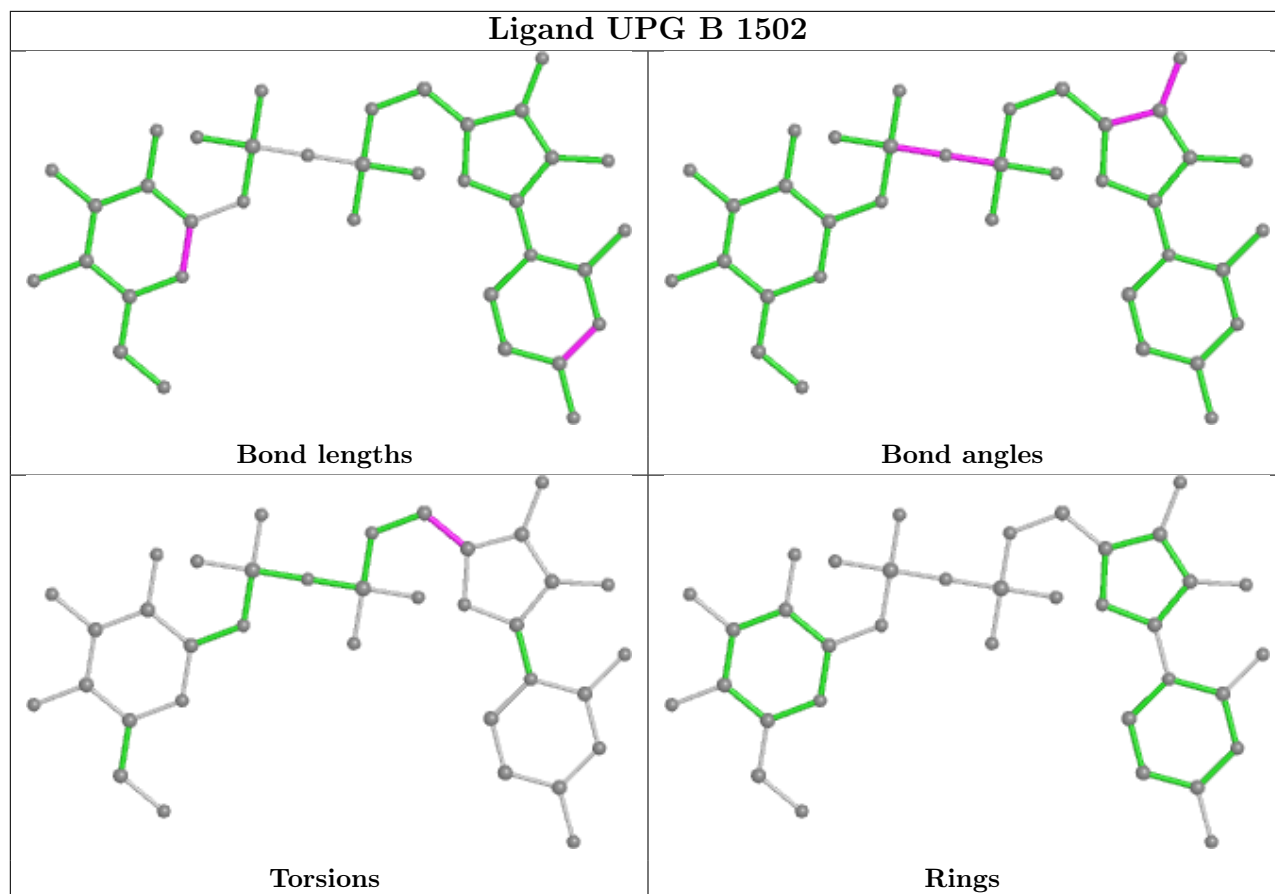
3 monomers are involved in 6 short contacts:

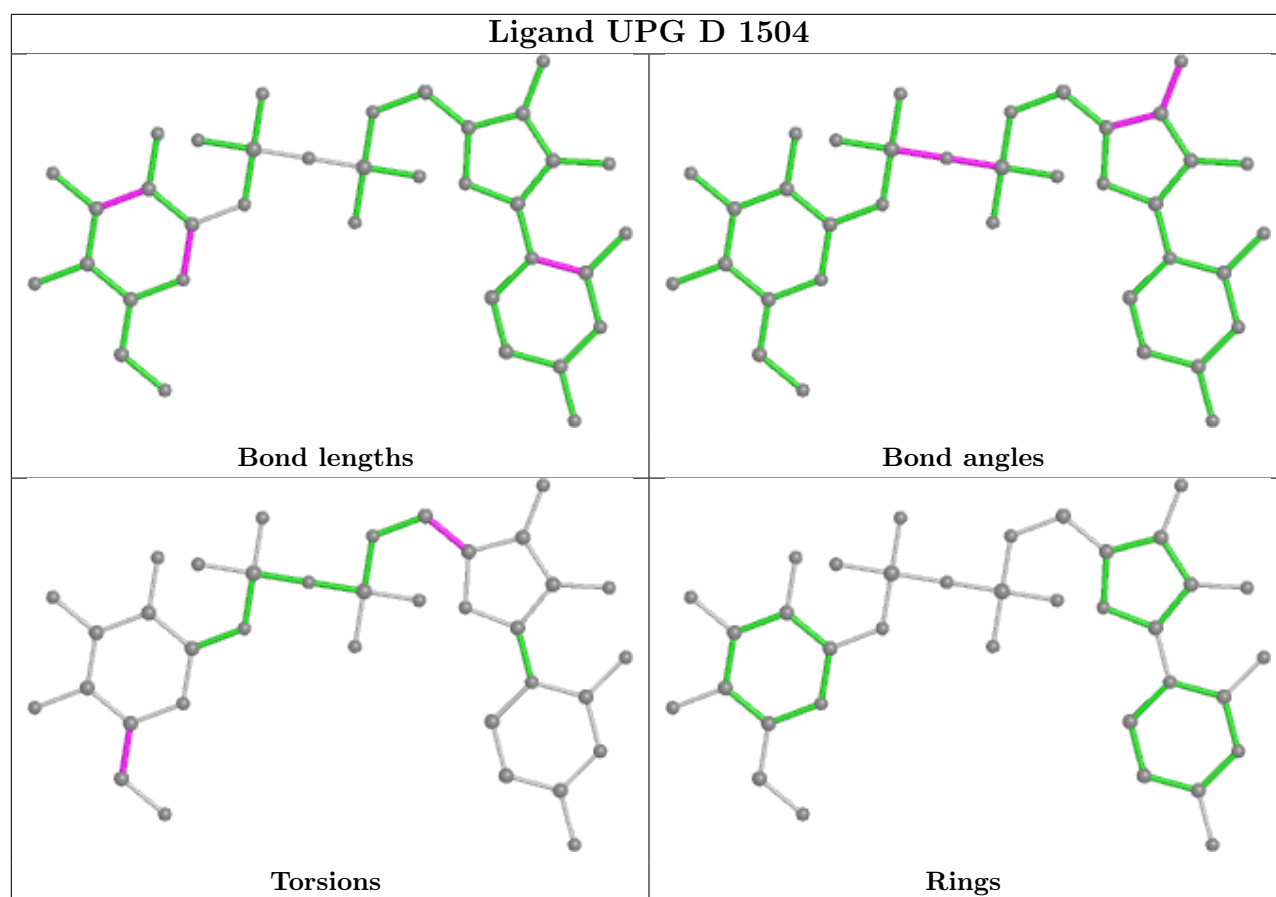
Mol	Chain	Res	Type	Clashes	Symm-Clashes
2	C	1503	UPG	3	0
2	B	1502	UPG	2	0
2	A	1501	UPG	1	0

The following is a two-dimensional graphical depiction of Mogul quality analysis of bond lengths, bond angles, torsion angles, and ring geometry for all instances of the Ligand of Interest. In addition, ligands with molecular weight > 250 and outliers as shown on the validation Tables will also be included. For torsion angles, if less than 5% of the Mogul distribution of torsion angles is

within 10 degrees of the torsion angle in question, then that torsion angle is considered an outlier. Any bond that is central to one or more torsion angles identified as an outlier by Mogul will be highlighted in the graph. For rings, the root-mean-square deviation (RMSD) between the ring in question and similar rings identified by Mogul is calculated over all ring torsion angles. If the average RMSD is greater than 60 degrees and the minimal RMSD between the ring in question and any Mogul-identified rings is also greater than 60 degrees, then that ring is considered an outlier. The outliers are highlighted in purple. The color gray indicates Mogul did not find sufficient equivalents in the CSD to analyse the geometry.







## 5.7 Other polymers [i](#)

There are no such residues in this entry.

## 5.8 Polymer linkage issues [i](#)

There are no chain breaks in this entry.

## 6 Fit of model and data

### 6.1 Protein, DNA and RNA chains

In the following table, the column labelled ‘#RSRZ > 2’ contains the number (and percentage) of RSRZ outliers, followed by percent RSRZ outliers for the chain as percentile scores relative to all X-ray entries and entries of similar resolution. The OWAB column contains the minimum, median, 95<sup>th</sup> percentile and maximum values of the occupancy-weighted average B-factor per residue. The column labelled ‘Q < 0.9’ lists the number of (and percentage) of residues with an average occupancy less than 0.9.

Mol	Chain	Analysed	<RSRZ>	#RSRZ>2	OWAB(Å <sup>2</sup> )	Q<0.9
1	A	289/292 (98%)	-0.31	2 (0%) 87 89	8, 16, 34, 52	0
1	B	289/292 (98%)	-0.33	3 (1%) 82 85	8, 15, 32, 45	0
1	C	289/292 (98%)	-0.00	20 (6%) 16 21	8, 18, 39, 56	0
1	D	289/292 (98%)	-0.07	9 (3%) 49 55	7, 18, 38, 53	0
All	All	1156/1168 (98%)	-0.18	34 (2%) 51 57	7, 17, 37, 56	0

All (34) RSRZ outliers are listed below:

Mol	Chain	Res	Type	RSRZ
1	C	270	ILE	4.2
1	C	275	PRO	3.7
1	D	153	GLN	3.6
1	C	165	LEU	3.6
1	C	276	LEU	3.6
1	D	280	ASP	3.5
1	D	166	GLN	3.4
1	A	153	GLN	3.2
1	A	154	LYS	3.2
1	C	280	ASP	3.1
1	D	155	GLY	3.0
1	C	23	ALA	2.9
1	C	267	GLN	2.7
1	C	151	PHE	2.7
1	C	166	GLN	2.7
1	B	156	THR	2.7
1	D	154	LYS	2.6
1	D	277	SER	2.5
1	D	165	LEU	2.5
1	C	158	VAL	2.5
1	C	277	SER	2.5

*Continued on next page...*

*Continued from previous page...*

Mol	Chain	Res	Type	RSRZ
1	C	289	VAL	2.4
1	C	153	GLN	2.3
1	C	156	THR	2.3
1	C	155	GLY	2.3
1	C	274	GLY	2.3
1	C	271	GLU	2.3
1	C	152	ASP	2.3
1	D	273	ALA	2.2
1	C	278	LYS	2.2
1	D	275	PRO	2.0
1	B	155	GLY	2.0
1	B	153	GLN	2.0
1	C	191	LYS	2.0

## 6.2 Non-standard residues in protein, DNA, RNA chains [i](#)

There are no non-standard protein/DNA/RNA residues in this entry.

## 6.3 Carbohydrates [i](#)

There are no monosaccharides in this entry.

## 6.4 Ligands [i](#)

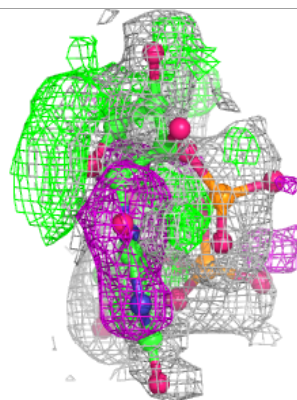
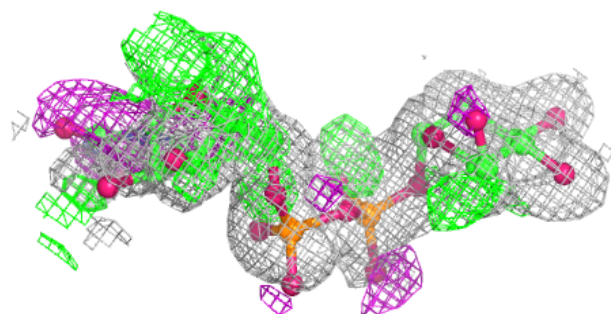
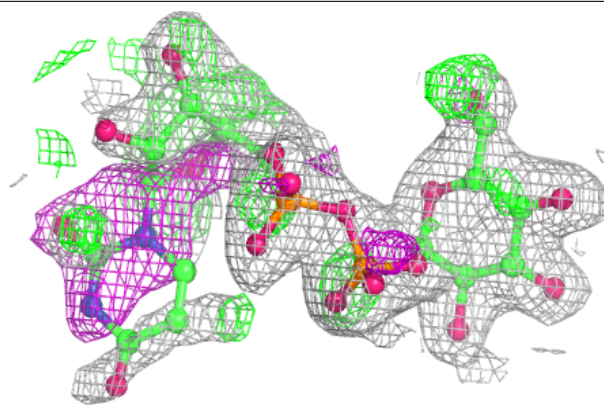
In the following table, the Atoms column lists the number of modelled atoms in the group and the number defined in the chemical component dictionary. The B-factors column lists the minimum, median, 95<sup>th</sup> percentile and maximum values of B factors of atoms in the group. The column labelled 'Q< 0.9' lists the number of atoms with occupancy less than 0.9.

Mol	Type	Chain	Res	Atoms	RSCC	RSR	B-factors( $\text{\AA}^2$ )	Q<0.9
2	UPG	C	1503	36/36	0.79	0.27	13,44,69,72	0
2	UPG	D	1504	36/36	0.94	0.11	17,25,48,52	0
2	UPG	A	1501	36/36	0.95	0.10	9,18,44,53	0
2	UPG	B	1502	36/36	0.95	0.11	10,18,45,49	0

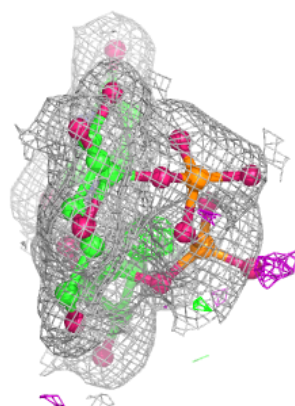
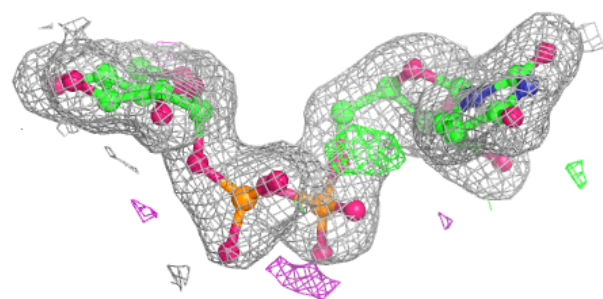
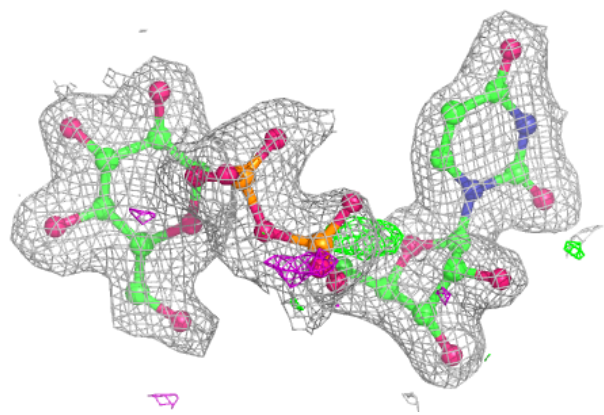
The following is a graphical depiction of the model fit to experimental electron density of all instances of the Ligand of Interest. In addition, ligands with molecular weight > 250 and outliers as shown on the geometry validation Tables will also be included. Each fit is shown from different orientation to approximate a three-dimensional view.

**Electron density around UPG C 1503:**

$2mF_o-DF_c$  (at 0.7 rmsd) in gray  
 $mF_o-DF_c$  (at 3 rmsd) in purple (negative)  
and green (positive)

**Electron density around UPG D 1504:**

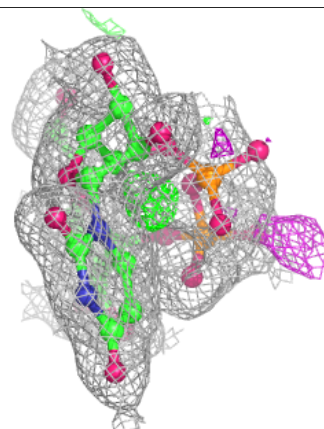
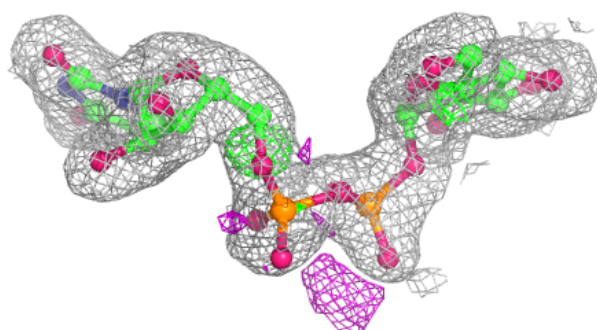
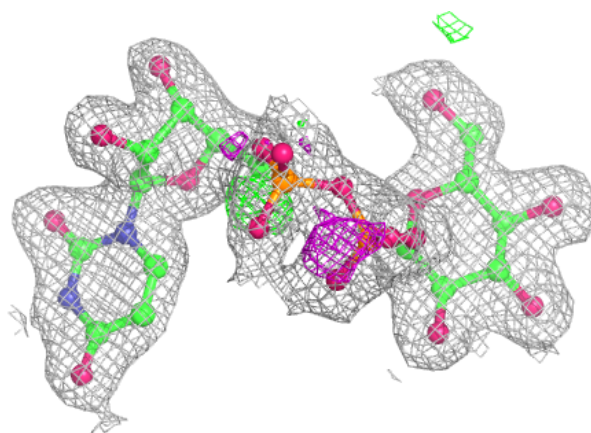
$2mF_o-DF_c$  (at 0.7 rmsd) in gray  
 $mF_o-DF_c$  (at 3 rmsd) in purple (negative)  
and green (positive)



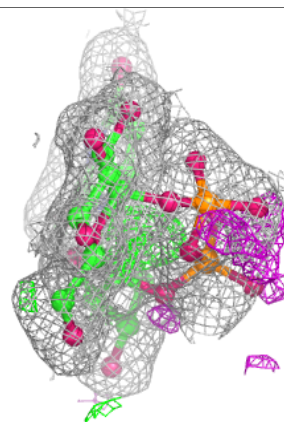
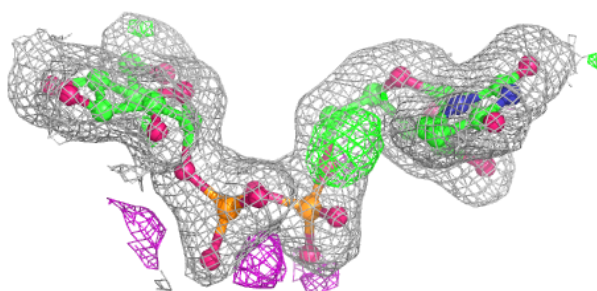
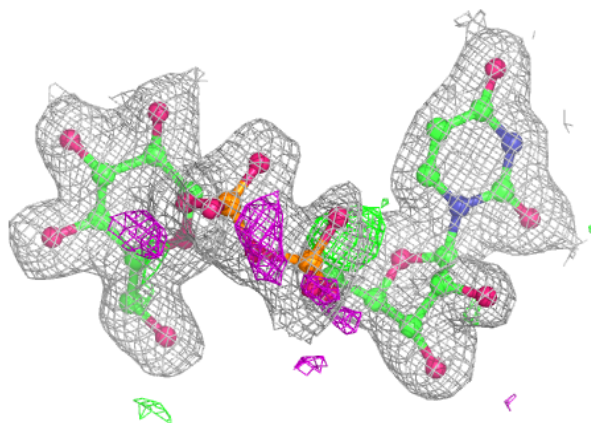


**Electron density around UPG A 1501:**

$2mF_o-DF_c$  (at 0.7 rmsd) in gray  
 $mF_o-DF_c$  (at 3 rmsd) in purple (negative)  
and green (positive)

**Electron density around UPG B 1502:**

$2mF_o-DF_c$  (at 0.7 rmsd) in gray  
 $mF_o-DF_c$  (at 3 rmsd) in purple (negative)  
and green (positive)



## 6.5 Other polymers [i](#)

There are no such residues in this entry.