



Full wwPDB X-ray Structure Validation Report ⓘ

Aug 22, 2020 – 08:19 AM BST

PDB ID : 4IIR
Title : Crystal Structure of AMPPNP-bound Human PRPF4B kinase domain
Authors : Mechin, I.; Haas, K.; Chen, X.; Zhang, Y.; McLean, L.
Deposited on : 2012-12-20
Resolution : 2.00 Å(reported)

This is a Full wwPDB X-ray Structure Validation Report for a publicly released PDB entry.

We welcome your comments at validation@mail.wwpdb.org

A user guide is available at

<https://www.wwpdb.org/validation/2017/XrayValidationReportHelp>

with specific help available everywhere you see the ⓘ symbol.

The following versions of software and data (see [references ⓘ](#)) were used in the production of this report:

MolProbity : 4.02b-467
Mogul : 1.8.5 (274361), CSD as541be (2020)
Xtriage (Phenix) : 1.13
EDS : 2.13.1
buster-report : 1.1.7 (2018)
Percentile statistics : 20191225.v01 (using entries in the PDB archive December 25th 2019)
Refmac : 5.8.0158
CCP4 : 7.0.044 (Gargrove)
Ideal geometry (proteins) : Engh & Huber (2001)
Ideal geometry (DNA, RNA) : Parkinson et al. (1996)
Validation Pipeline (wwPDB-VP) : 2.13.1

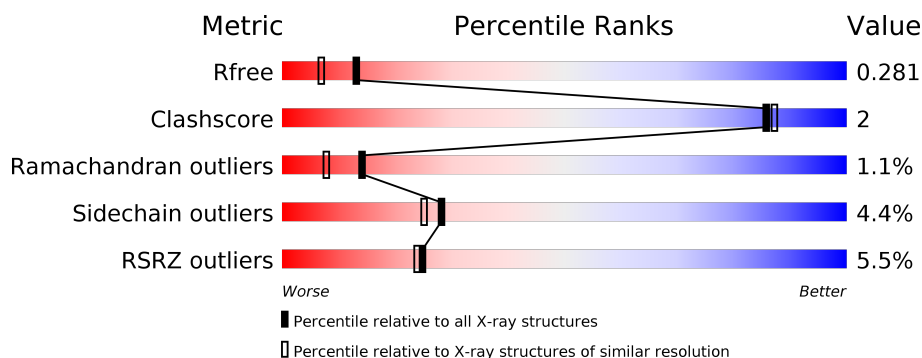
1 Overall quality at a glance

The following experimental techniques were used to determine the structure:

X-RAY DIFFRACTION

The reported resolution of this entry is 2.00 Å.

Percentile scores (ranging between 0-100) for global validation metrics of the entry are shown in the following graphic. The table shows the number of entries on which the scores are based.



Metric	Whole archive (#Entries)	Similar resolution (#Entries, resolution range(Å))
R_{free}	130704	8085 (2.00-2.00)
Clashscore	141614	9178 (2.00-2.00)
Ramachandran outliers	138981	9054 (2.00-2.00)
Sidechain outliers	138945	9053 (2.00-2.00)
RSRZ outliers	127900	7900 (2.00-2.00)

The table below summarises the geometric issues observed across the polymeric chains and their fit to the electron density. The red, orange, yellow and green segments on the lower bar indicate the fraction of residues that contain outliers for ≥ 3 , 2, 1 and 0 types of geometric quality criteria respectively. A grey segment represents the fraction of residues that are not modelled. The numeric value for each fraction is indicated below the corresponding segment, with a dot representing fractions $\leq 5\%$. The upper red bar (where present) indicates the fraction of residues that have poor fit to the electron density. The numeric value is given above the bar.

Mol	Chain	Length	Quality of chain
1	A	358	<p>6% 80% 11% • 9%</p>
1	B	358	<p>4% 81% 9% • 8%</p>

2 Entry composition

There are 5 unique types of molecules in this entry. The entry contains 5841 atoms, of which 0 are hydrogens and 0 are deuteriums.

In the tables below, the ZeroOcc column contains the number of atoms modelled with zero occupancy, the AltConf column contains the number of residues with at least one atom in alternate conformation and the Trace column contains the number of residues modelled with at most 2 atoms.

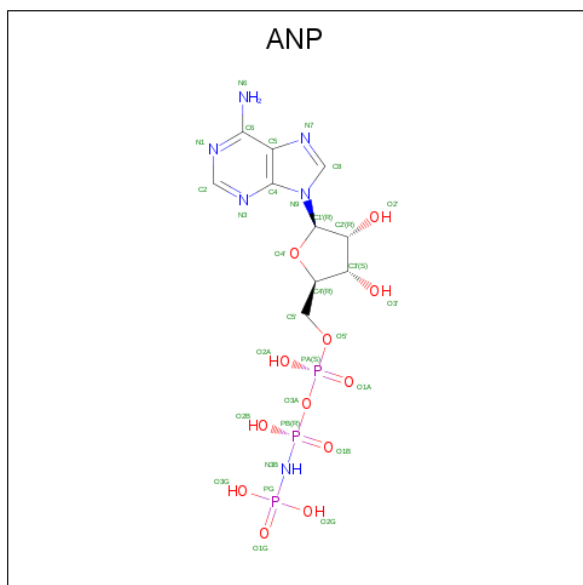
- Molecule 1 is a protein called Serine/threonine-protein kinase PRP4 homolog.

Mol	Chain	Residues	Atoms						ZeroOcc	AltConf	Trace
			Total	C	N	O	P	S			
1	A	326	2671	1708	467	479	1	16	0	1	0
1	B	328	2694	1722	473	482	1	16	0	3	0

There are 14 discrepancies between the modelled and reference sequences:

Chain	Residue	Modelled	Actual	Comment	Reference
A	656	MET	-	EXPRESSION TAG	UNP Q13523
A	1008	HIS	-	EXPRESSION TAG	UNP Q13523
A	1009	HIS	-	EXPRESSION TAG	UNP Q13523
A	1010	HIS	-	EXPRESSION TAG	UNP Q13523
A	1011	HIS	-	EXPRESSION TAG	UNP Q13523
A	1012	HIS	-	EXPRESSION TAG	UNP Q13523
A	1013	HIS	-	EXPRESSION TAG	UNP Q13523
B	656	MET	-	EXPRESSION TAG	UNP Q13523
B	1008	HIS	-	EXPRESSION TAG	UNP Q13523
B	1009	HIS	-	EXPRESSION TAG	UNP Q13523
B	1010	HIS	-	EXPRESSION TAG	UNP Q13523
B	1011	HIS	-	EXPRESSION TAG	UNP Q13523
B	1012	HIS	-	EXPRESSION TAG	UNP Q13523
B	1013	HIS	-	EXPRESSION TAG	UNP Q13523

- Molecule 2 is PHOSPHOAMINOPHOSPHONIC ACID-ADENYLATE ESTER (three-letter code: ANP) (formula: C₁₀H₁₇N₆O₁₂P₃).



Mol	Chain	Residues	Atoms				ZeroOcc	AltConf	
			Total	C	N	O			P
2	A	1	31	10	6	12	3	0	0
2	B	1	31	10	6	12	3	0	0

- Molecule 3 is SULFATE ION (three-letter code: SO4) (formula: O₄S).



Mol	Chain	Residues	Atoms		ZeroOcc	AltConf
			Total	O S		
3	A	1	5	4 1	0	0
3	B	1	5	4 1	0	0

Continued on next page...

Continued from previous page...

Mol	Chain	Residues	Atoms			ZeroOcc	AltConf
3	B	1	Total	O	S	0	0
			5	4	1		
3	B	1	Total	O	S	0	0
			5	4	1		

- Molecule 4 is MAGNESIUM ION (three-letter code: MG) (formula: Mg).

Mol	Chain	Residues	Atoms		ZeroOcc	AltConf
4	A	1	Total	Mg	0	0
			1	1		

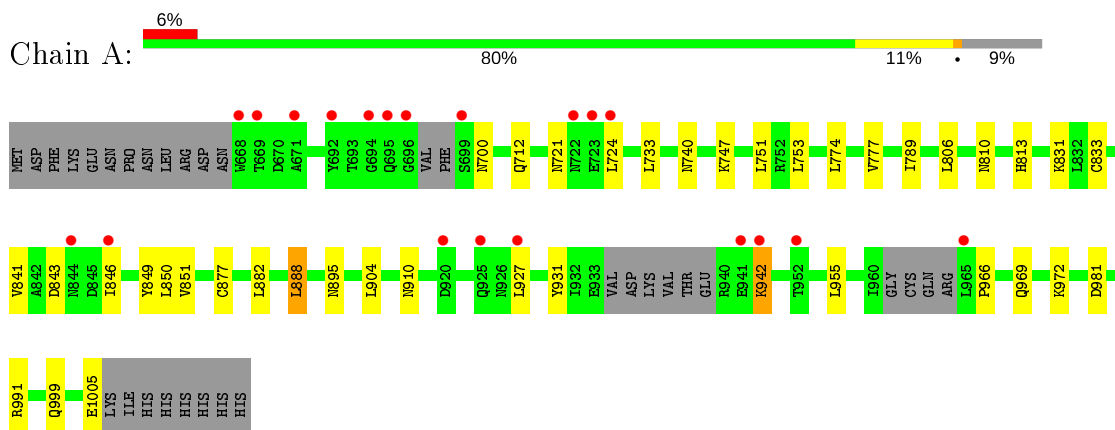
- Molecule 5 is water.

Mol	Chain	Residues	Atoms		ZeroOcc	AltConf
5	A	215	Total	O	0	0
			215	215		
5	B	178	Total	O	0	0
			178	178		

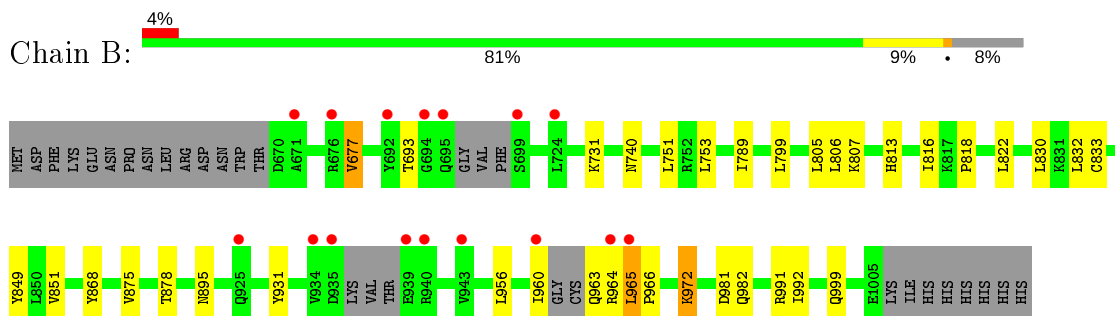
3 Residue-property plots [i](#)

These plots are drawn for all protein, RNA, DNA and oligosaccharide chains in the entry. The first graphic for a chain summarises the proportions of the various outlier classes displayed in the second graphic. The second graphic shows the sequence view annotated by issues in geometry and electron density. Residues are color-coded according to the number of geometric quality criteria for which they contain at least one outlier: green = 0, yellow = 1, orange = 2 and red = 3 or more. A red dot above a residue indicates a poor fit to the electron density ($RSRZ > 2$). Stretches of 2 or more consecutive residues without any outlier are shown as a green connector. Residues present in the sample, but not in the model, are shown in grey.

- Molecule 1: Serine/threonine-protein kinase PRP4 homolog



- Molecule 1: Serine/threonine-protein kinase PRP4 homolog



4 Data and refinement statistics

Property	Value	Source
Space group	P 1	Depositor
Cell constants a, b, c, α , β , γ	52.50 Å 52.50 Å 78.79 Å 105.29° 103.05° 93.09°	Depositor
Resolution (Å)	20.16 – 2.00 26.85 – 2.00	Depositor EDS
% Data completeness (in resolution range)	97.1 (20.16-2.00) 96.9 (26.85-2.00)	Depositor EDS
R_{merge}	0.06	Depositor
R_{sym}	(Not available)	Depositor
$\langle I/\sigma(I) \rangle$ ¹	2.52 (at 1.99 Å)	Xtrriage
Refinement program	BUSTER-TNT BUSTER 2.9.1, BUSTER 2.9.1	Depositor
R, R_{free}	0.243 , 0.265 0.252 , 0.281	Depositor DCC
R_{free} test set	2623 reflections (5.10%)	wwPDB-VP
Wilson B-factor (Å ²)	32.0	Xtrriage
Anisotropy	0.142	Xtrriage
Bulk solvent k_{sol} (e/Å ³), B_{sol} (Å ²)	0.34 , 38.6	EDS
L-test for twinning ²	$\langle L \rangle = 0.51$, $\langle L^2 \rangle = 0.34$	Xtrriage
Estimated twinning fraction	0.145 for -k,-h,-l	Xtrriage
F_o, F_c correlation	0.93	EDS
Total number of atoms	5841	wwPDB-VP
Average B, all atoms (Å ²)	44.0	wwPDB-VP

Xtrriage's analysis on translational NCS is as follows: *The largest off-origin peak in the Patterson function is 6.91% of the height of the origin peak. No significant pseudotranslation is detected.*

¹ Intensities estimated from amplitudes.

² Theoretical values of $\langle |L| \rangle$, $\langle L^2 \rangle$ for acentric reflections are 0.5, 0.333 respectively for untwinned datasets, and 0.375, 0.2 for perfectly twinned datasets.

5 Model quality [i](#)

5.1 Standard geometry [i](#)

Bond lengths and bond angles in the following residue types are not validated in this section: MG, ANP, SO4, PTR

The Z score for a bond length (or angle) is the number of standard deviations the observed value is removed from the expected value. A bond length (or angle) with $|Z| > 5$ is considered an outlier worth inspection. RMSZ is the root-mean-square of all Z scores of the bond lengths (or angles).

Mol	Chain	Bond lengths		Bond angles	
		RMSZ	# Z >5	RMSZ	# Z >5
1	A	0.37	0/2705	0.59	1/3634 (0.0%)
1	B	0.37	0/2733	0.59	1/3671 (0.0%)
All	All	0.37	0/5438	0.59	2/7305 (0.0%)

There are no bond length outliers.

All (2) bond angle outliers are listed below:

Mol	Chain	Res	Type	Atoms	Z	Observed(°)	Ideal(°)
1	A	981	ASP	CB-CG-OD2	5.21	122.99	118.30
1	B	981	ASP	CB-CG-OD2	5.17	122.96	118.30

There are no chirality outliers.

There are no planarity outliers.

5.2 Too-close contacts [i](#)

In the following table, the Non-H and H(model) columns list the number of non-hydrogen atoms and hydrogen atoms in the chain respectively. The H(added) column lists the number of hydrogen atoms added and optimized by MolProbity. The Clashes column lists the number of clashes within the asymmetric unit, whereas Symm-Clashes lists symmetry related clashes.

Mol	Chain	Non-H	H(model)	H(added)	Clashes	Symm-Clashes
1	A	2671	0	2722	11	0
1	B	2694	0	2750	13	0
2	A	31	0	13	0	0
2	B	31	0	13	1	0
3	A	5	0	0	0	0
3	B	15	0	0	0	0
4	A	1	0	0	0	0

Continued on next page...

Continued from previous page...

Mol	Chain	Non-H	H(model)	H(added)	Clashes	Symm-Clashes
5	A	215	0	0	0	0
5	B	178	0	0	0	0
All	All	5841	0	5498	24	0

The all-atom clashscore is defined as the number of clashes found per 1000 atoms (including hydrogen atoms). The all-atom clashscore for this structure is 2.

All (24) close contacts within the same asymmetric unit are listed below, sorted by their clash magnitude.

Atom-1	Atom-2	Interatomic distance (Å)	Clash overlap (Å)
1:B:740:ASN:HD21	1:B:753:LEU:H	1.49	0.60
1:A:740:ASN:HD21	1:A:753:LEU:H	1.51	0.57
1:B:965:LEU:HB2	1:B:966:PRO:HD3	1.90	0.54
1:B:965:LEU:CB	1:B:966:PRO:HD3	2.38	0.54
1:A:904:LEU:HD11	1:A:955:LEU:HG	1.91	0.53
1:B:799:LEU:HD23	1:B:875:VAL:HG13	1.93	0.50
1:B:822:LEU:HD21	2:B:1101:ANP:H2'	1.96	0.48
1:A:751:LEU:HD22	1:A:833[B]:CYS:HB2	1.94	0.48
1:B:816:ILE:HG12	1:B:832[A]:LEU:HD11	1.96	0.47
1:A:877:CYS:HA	1:A:888:LEU:HD12	1.96	0.46
1:B:806:LEU:HD21	1:B:813:HIS:HB2	1.96	0.46
1:B:895:ASN:HD21	1:B:931:TYR:HA	1.80	0.46
1:A:789:ILE:HG12	1:A:972:LYS:HB3	1.97	0.46
1:B:751:LEU:HD22	1:B:833[B]:CYS:HB2	1.99	0.45
1:A:810:ASN:HB3	1:A:841:VAL:HG22	1.99	0.44
1:A:895:ASN:HD21	1:A:931:TYR:HA	1.82	0.44
1:B:982:GLN:HB3	1:B:992:ILE:HB	1.99	0.43
1:A:806:LEU:HD21	1:A:813:HIS:HB2	2.01	0.43
1:B:818:PRO:HD3	1:B:878:THR:HG22	2.01	0.43
1:B:789:ILE:HG12	1:B:972:LYS:HB3	2.01	0.42
1:A:966:PRO:HD2	1:A:969:GLN:HB2	2.02	0.42
1:A:774:LEU:HA	1:A:777:VAL:HG22	2.01	0.41
1:A:910:ASN:HD22	1:A:927:LEU:HD13	1.84	0.41
1:B:807:LYS:HA	1:B:868:TYR:CE1	2.57	0.40

There are no symmetry-related clashes.

5.3 Torsion angles [i](#)

5.3.1 Protein backbone [i](#)

In the following table, the Percentiles column shows the percent Ramachandran outliers of the chain as a percentile score with respect to all X-ray entries followed by that with respect to entries of similar resolution.

The Analysed column shows the number of residues for which the backbone conformation was analysed, and the total number of residues.

Mol	Chain	Analysed	Favoured	Allowed	Outliers	Percentiles	
1	A	318/358 (89%)	295 (93%)	20 (6%)	3 (1%)	17	11
1	B	322/358 (90%)	300 (93%)	18 (6%)	4 (1%)	13	7
All	All	640/716 (89%)	595 (93%)	38 (6%)	7 (1%)	14	8

All (7) Ramachandran outliers are listed below:

Mol	Chain	Res	Type
1	A	721	ASN
1	B	965	LEU
1	A	851	VAL
1	B	677	VAL
1	B	851	VAL
1	A	942	LYS
1	B	964	ARG

5.3.2 Protein sidechains [i](#)

In the following table, the Percentiles column shows the percent sidechain outliers of the chain as a percentile score with respect to all X-ray entries followed by that with respect to entries of similar resolution.

The Analysed column shows the number of residues for which the sidechain conformation was analysed, and the total number of residues.

Mol	Chain	Analysed	Rotameric	Outliers	Percentiles	
1	A	293/323 (91%)	278 (95%)	15 (5%)	24	19
1	B	296/323 (92%)	285 (96%)	11 (4%)	34	32
All	All	589/646 (91%)	563 (96%)	26 (4%)	28	25

All (26) residues with a non-rotameric sidechain are listed below:

Mol	Chain	Res	Type
1	A	700	ASN
1	A	712	GLN
1	A	724	LEU
1	A	733	LEU
1	A	747	LYS
1	A	831	LYS
1	A	843	ASP
1	A	846	ILE
1	A	850	LEU
1	A	882	LEU
1	A	888	LEU
1	A	942	LYS
1	A	991	ARG
1	A	999	GLN
1	A	1005	GLU
1	B	677	VAL
1	B	693	THR
1	B	731	LYS
1	B	805	LEU
1	B	830	LEU
1	B	956	LEU
1	B	960	ILE
1	B	963	GLN
1	B	972	LYS
1	B	991	ARG
1	B	999	GLN

Some sidechains can be flipped to improve hydrogen bonding and reduce clashes. All (9) such sidechains are listed below:

Mol	Chain	Res	Type
1	A	722	ASN
1	A	740	ASN
1	A	895	ASN
1	A	910	ASN
1	A	996	GLN
1	B	740	ASN
1	B	895	ASN
1	B	999	GLN
1	B	1004	GLN

5.3.3 RNA [i](#)

There are no RNA molecules in this entry.

5.4 Non-standard residues in protein, DNA, RNA chains [i](#)

2 non-standard protein/DNA/RNA residues are modelled in this entry.

In the following table, the Counts columns list the number of bonds (or angles) for which Mogul statistics could be retrieved, the number of bonds (or angles) that are observed in the model and the number of bonds (or angles) that are defined in the Chemical Component Dictionary. The Link column lists molecule types, if any, to which the group is linked. The Z score for a bond length (or angle) is the number of standard deviations the observed value is removed from the expected value. A bond length (or angle) with $|Z| > 2$ is considered an outlier worth inspection. RMSZ is the root-mean-square of all Z scores of the bond lengths (or angles).

Mol	Type	Chain	Res	Link	Bond lengths			Bond angles		
					Counts	RMSZ	# $ Z > 2$	Counts	RMSZ	# $ Z > 2$
1	PTR	B	849	1	15,16,17	1.31	2 (13%)	19,22,24	1.18	2 (10%)
1	PTR	A	849	1	15,16,17	1.21	2 (13%)	19,22,24	1.12	1 (5%)

In the following table, the Chirals column lists the number of chiral outliers, the number of chiral centers analysed, the number of these observed in the model and the number defined in the Chemical Component Dictionary. Similar counts are reported in the Torsion and Rings columns. '-' means no outliers of that kind were identified.

Mol	Type	Chain	Res	Link	Chirals	Torsions	Rings
1	PTR	B	849	1	-	1/10/11/13	0/1/1/1
1	PTR	A	849	1	-	1/10/11/13	0/1/1/1

All (4) bond length outliers are listed below:

Mol	Chain	Res	Type	Atoms	Z	Observed(Å)	Ideal(Å)
1	B	849	PTR	P-OH	-3.18	1.54	1.59
1	A	849	PTR	P-OH	-2.83	1.54	1.59
1	B	849	PTR	CE2-CZ	2.26	1.43	1.38
1	A	849	PTR	CE2-CZ	2.19	1.43	1.38

All (3) bond angle outliers are listed below:

Mol	Chain	Res	Type	Atoms	Z	Observed(°)	Ideal(°)
1	B	849	PTR	OH-CZ-CE2	2.37	126.27	119.23
1	B	849	PTR	O2P-P-OH	2.22	112.19	105.24
1	A	849	PTR	O2P-P-OH	2.15	111.96	105.24

There are no chirality outliers.

All (2) torsion outliers are listed below:

Mol	Chain	Res	Type	Atoms
1	B	849	PTR	O-C-CA-CB
1	A	849	PTR	O-C-CA-CB

There are no ring outliers.

No monomer is involved in short contacts.

5.5 Carbohydrates [i](#)

There are no monosaccharides in this entry.

5.6 Ligand geometry [i](#)

Of 7 ligands modelled in this entry, 1 is monoatomic - leaving 6 for Mogul analysis.

In the following table, the Counts columns list the number of bonds (or angles) for which Mogul statistics could be retrieved, the number of bonds (or angles) that are observed in the model and the number of bonds (or angles) that are defined in the Chemical Component Dictionary. The Link column lists molecule types, if any, to which the group is linked. The Z score for a bond length (or angle) is the number of standard deviations the observed value is removed from the expected value. A bond length (or angle) with $|Z| > 2$ is considered an outlier worth inspection. RMSZ is the root-mean-square of all Z scores of the bond lengths (or angles).

Mol	Type	Chain	Res	Link	Bond lengths			Bond angles		
					Counts	RMSZ	# Z > 2	Counts	RMSZ	# Z > 2
3	SO4	B	1102	-	4,4,4	0.13	0	6,6,6	0.08	0
3	SO4	A	1102	-	4,4,4	0.18	0	6,6,6	0.04	0
3	SO4	B	1103	-	4,4,4	0.13	0	6,6,6	0.05	0
3	SO4	B	1104	-	4,4,4	0.14	0	6,6,6	0.05	0
2	ANP	B	1101	-	29,33,33	2.92	7 (24%)	31,52,52	1.66	4 (12%)
2	ANP	A	1101	4	29,33,33	2.87	7 (24%)	31,52,52	1.70	5 (16%)

In the following table, the Chirals column lists the number of chiral outliers, the number of chiral centers analysed, the number of these observed in the model and the number defined in the Chemical Component Dictionary. Similar counts are reported in the Torsion and Rings columns. '-' means no outliers of that kind were identified.

Mol	Type	Chain	Res	Link	Chirals	Torsions	Rings
2	ANP	B	1101	-	-	3/14/38/38	0/3/3/3

Continued on next page...

Continued from previous page...

Mol	Type	Chain	Res	Link	Chirals	Torsions	Rings
2	ANP	A	1101	4	-	3/14/38/38	0/3/3/3

All (14) bond length outliers are listed below:

Mol	Chain	Res	Type	Atoms	Z	Observed(Å)	Ideal(Å)
2	B	1101	ANP	PB-O1B	9.99	1.62	1.46
2	A	1101	ANP	PB-O1B	9.83	1.61	1.46
2	B	1101	ANP	PG-O1G	9.33	1.61	1.46
2	A	1101	ANP	PG-O1G	9.20	1.60	1.46
2	B	1101	ANP	O4'-C1'	3.46	1.45	1.41
2	A	1101	ANP	PB-O3A	3.34	1.63	1.59
2	B	1101	ANP	PB-O3A	3.32	1.63	1.59
2	A	1101	ANP	PB-O2B	-3.24	1.48	1.56
2	B	1101	ANP	PB-O2B	-3.16	1.48	1.56
2	A	1101	ANP	O4'-C1'	3.10	1.45	1.41
2	A	1101	ANP	PG-O2G	-3.01	1.48	1.56
2	B	1101	ANP	PG-O2G	-2.98	1.48	1.56
2	B	1101	ANP	PA-O1A	2.66	1.60	1.50
2	A	1101	ANP	PA-O1A	2.52	1.59	1.50

All (9) bond angle outliers are listed below:

Mol	Chain	Res	Type	Atoms	Z	Observed(°)	Ideal(°)
2	A	1101	ANP	O1G-PG-N3B	-4.86	104.62	111.77
2	A	1101	ANP	N3-C2-N1	-4.76	121.24	128.68
2	B	1101	ANP	N3-C2-N1	-4.74	121.27	128.68
2	B	1101	ANP	O1G-PG-N3B	-4.60	105.00	111.77
2	B	1101	ANP	O3G-PG-O1G	-3.93	103.58	113.45
2	A	1101	ANP	O3G-PG-O1G	-3.86	103.75	113.45
2	A	1101	ANP	O3G-PG-O2G	2.15	113.36	107.64
2	A	1101	ANP	C4-C5-N7	-2.00	107.31	109.40
2	B	1101	ANP	O3G-PG-O2G	2.00	112.97	107.64

There are no chirality outliers.

All (6) torsion outliers are listed below:

Mol	Chain	Res	Type	Atoms
2	B	1101	ANP	PB-N3B-PG-O1G
2	A	1101	ANP	PB-N3B-PG-O1G
2	B	1101	ANP	PB-O3A-PA-O1A
2	A	1101	ANP	PB-O3A-PA-O1A

Continued on next page...

Continued from previous page...

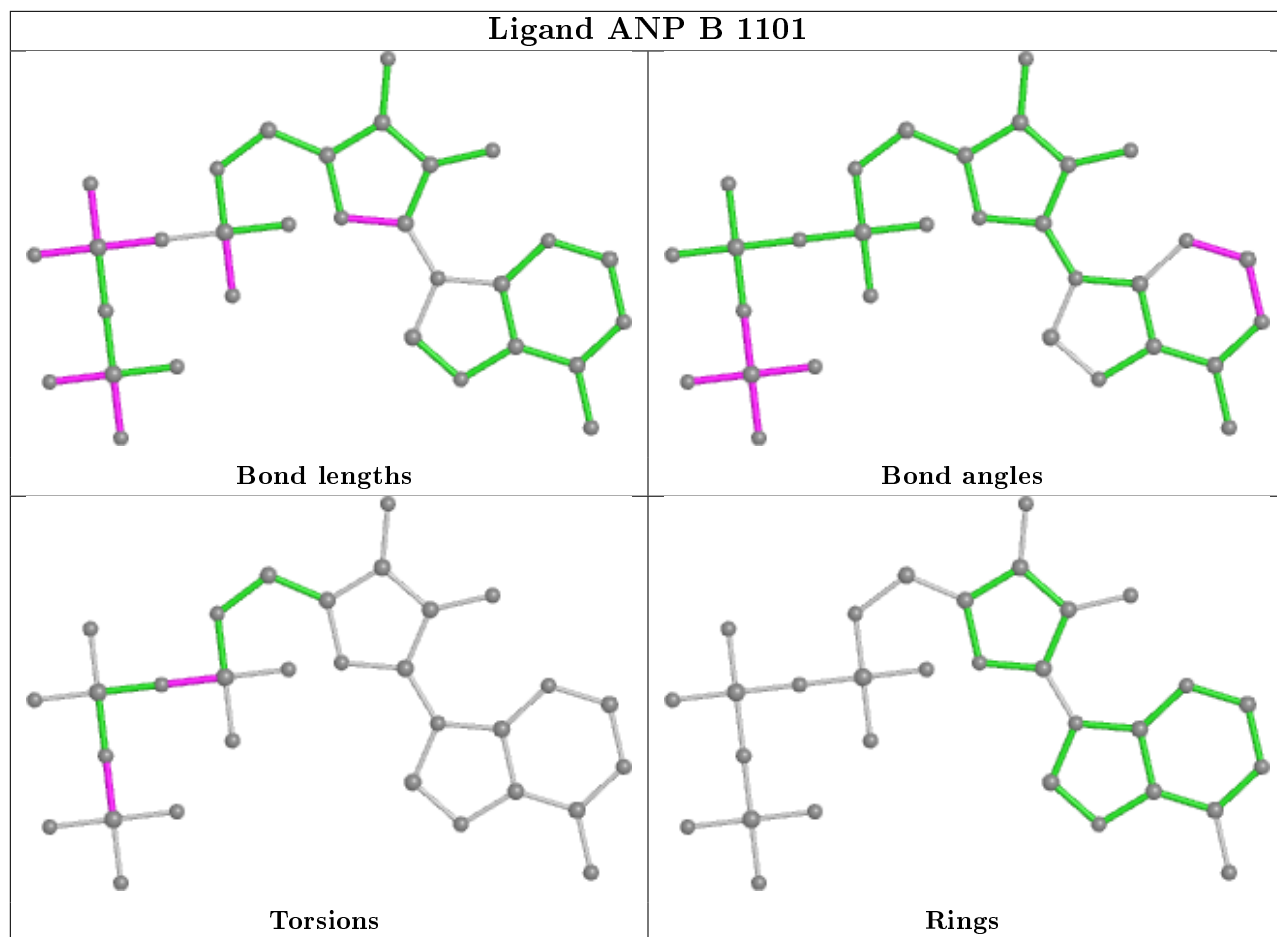
Mol	Chain	Res	Type	Atoms
2	B	1101	ANP	PB-O3A-PA-O2A
2	A	1101	ANP	PB-O3A-PA-O2A

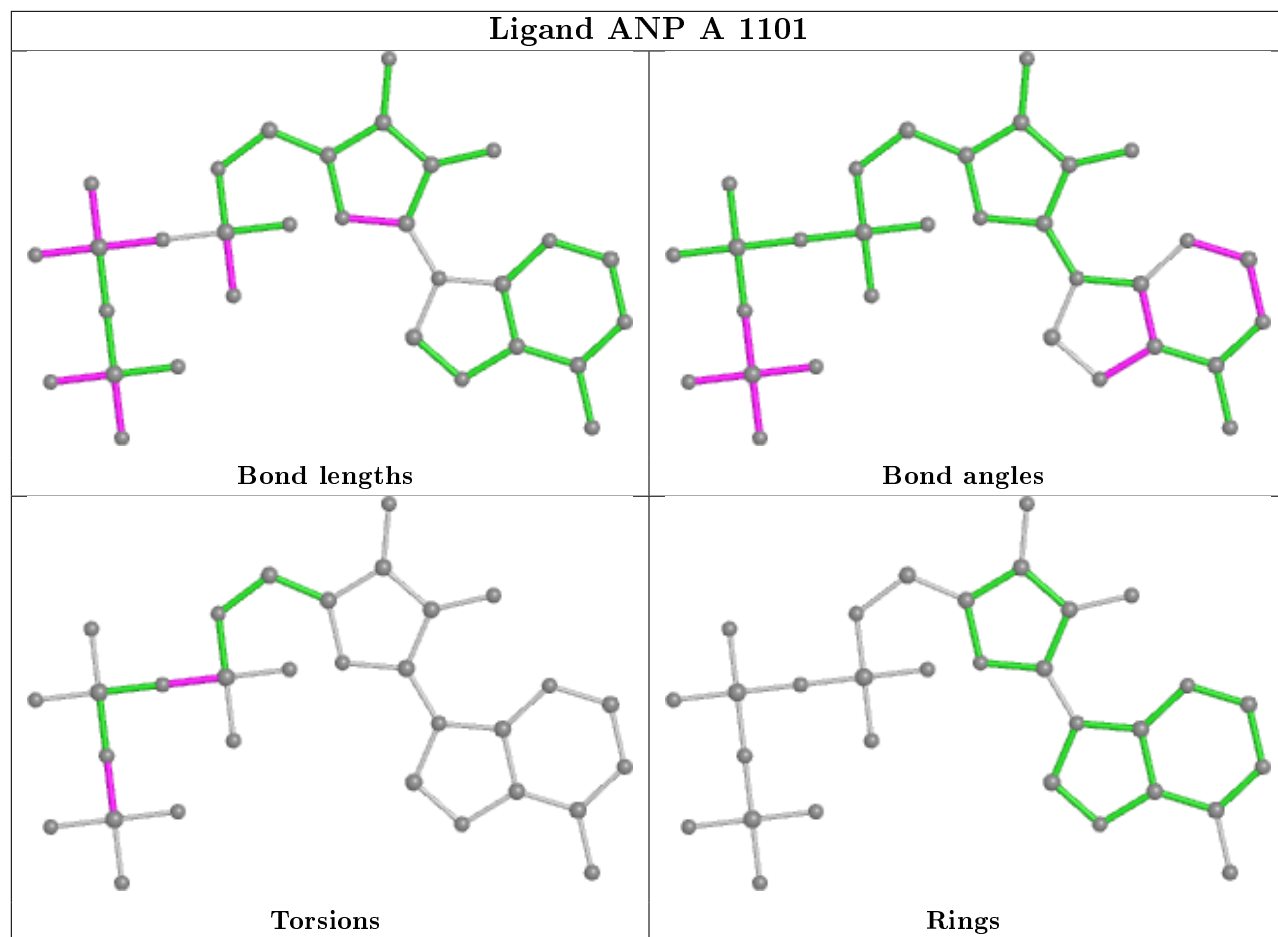
There are no ring outliers.

1 monomer is involved in 1 short contact:

Mol	Chain	Res	Type	Clashes	Symm-Clashes
2	B	1101	ANP	1	0

The following is a two-dimensional graphical depiction of Mogul quality analysis of bond lengths, bond angles, torsion angles, and ring geometry for all instances of the Ligand of Interest. In addition, ligands with molecular weight > 250 and outliers as shown on the validation Tables will also be included. For torsion angles, if less than 5% of the Mogul distribution of torsion angles is within 10 degrees of the torsion angle in question, then that torsion angle is considered an outlier. Any bond that is central to one or more torsion angles identified as an outlier by Mogul will be highlighted in the graph. For rings, the root-mean-square deviation (RMSD) between the ring in question and similar rings identified by Mogul is calculated over all ring torsion angles. If the average RMSD is greater than 60 degrees and the minimal RMSD between the ring in question and any Mogul-identified rings is also greater than 60 degrees, then that ring is considered an outlier. The outliers are highlighted in purple. The color gray indicates Mogul did not find sufficient equivalents in the CSD to analyse the geometry.





5.7 Other polymers [i](#)

There are no such residues in this entry.

5.8 Polymer linkage issues [i](#)

There are no chain breaks in this entry.

6 Fit of model and data

6.1 Protein, DNA and RNA chains

In the following table, the column labelled ‘#RSRZ> 2’ contains the number (and percentage) of RSRZ outliers, followed by percent RSRZ outliers for the chain as percentile scores relative to all X-ray entries and entries of similar resolution. The OWAB column contains the minimum, median, 95th percentile and maximum values of the occupancy-weighted average B-factor per residue. The column labelled ‘Q< 0.9’ lists the number of (and percentage) of residues with an average occupancy less than 0.9.

Mol	Chain	Analysed	<RSRZ>	#RSRZ>2	OWAB(Å ²)	Q<0.9
1	A	325/358 (90%)	0.11	20 (6%) 20 19	21, 39, 69, 94	0
1	B	327/358 (91%)	0.15	16 (4%) 29 28	22, 41, 71, 100	0
All	All	652/716 (91%)	0.13	36 (5%) 25 24	21, 40, 70, 100	0

All (36) RSRZ outliers are listed below:

Mol	Chain	Res	Type	RSRZ
1	B	671	ALA	6.0
1	B	724	LEU	5.5
1	B	676	ARG	5.1
1	A	965	LEU	4.7
1	B	965	LEU	4.7
1	A	724	LEU	4.5
1	A	668	TRP	4.2
1	A	669	THR	4.1
1	A	920	ASP	4.0
1	B	934	VAL	4.0
1	A	941	GLU	3.7
1	B	699	SER	3.7
1	B	692	TYR	3.6
1	A	671	ALA	3.5
1	A	699	SER	3.3
1	B	935	ASP	3.1
1	A	723	GLU	3.1
1	B	925	GLN	2.7
1	B	960	ILE	2.7
1	A	846	ILE	2.6
1	A	925	GLN	2.6
1	B	695	GLN	2.6
1	B	940	ARG	2.6
1	A	696	GLY	2.5

Continued on next page...

Continued from previous page...

Mol	Chain	Res	Type	RSRZ
1	A	722	ASN	2.5
1	A	692	TYR	2.5
1	A	844	ASN	2.5
1	A	695	GLN	2.4
1	B	964	ARG	2.4
1	B	694	GLY	2.4
1	A	942	LYS	2.3
1	A	694	GLY	2.3
1	B	943	VAL	2.2
1	A	952	THR	2.2
1	B	939	GLU	2.1
1	A	927	LEU	2.1

6.2 Non-standard residues in protein, DNA, RNA chains [i](#)

In the following table, the Atoms column lists the number of modelled atoms in the group and the number defined in the chemical component dictionary. The B-factors column lists the minimum, median, 95th percentile and maximum values of B factors of atoms in the group. The column labelled 'Q< 0.9' lists the number of atoms with occupancy less than 0.9.

Mol	Type	Chain	Res	Atoms	RSCC	RSR	B-factors(Å ²)	Q<0.9
1	PTR	A	849	16/17	0.70	0.19	41,46,52,52	0
1	PTR	B	849	16/17	0.83	0.17	40,46,52,52	0

6.3 Carbohydrates [i](#)

There are no monosaccharides in this entry.

6.4 Ligands [i](#)

In the following table, the Atoms column lists the number of modelled atoms in the group and the number defined in the chemical component dictionary. The B-factors column lists the minimum, median, 95th percentile and maximum values of B factors of atoms in the group. The column labelled 'Q< 0.9' lists the number of atoms with occupancy less than 0.9.

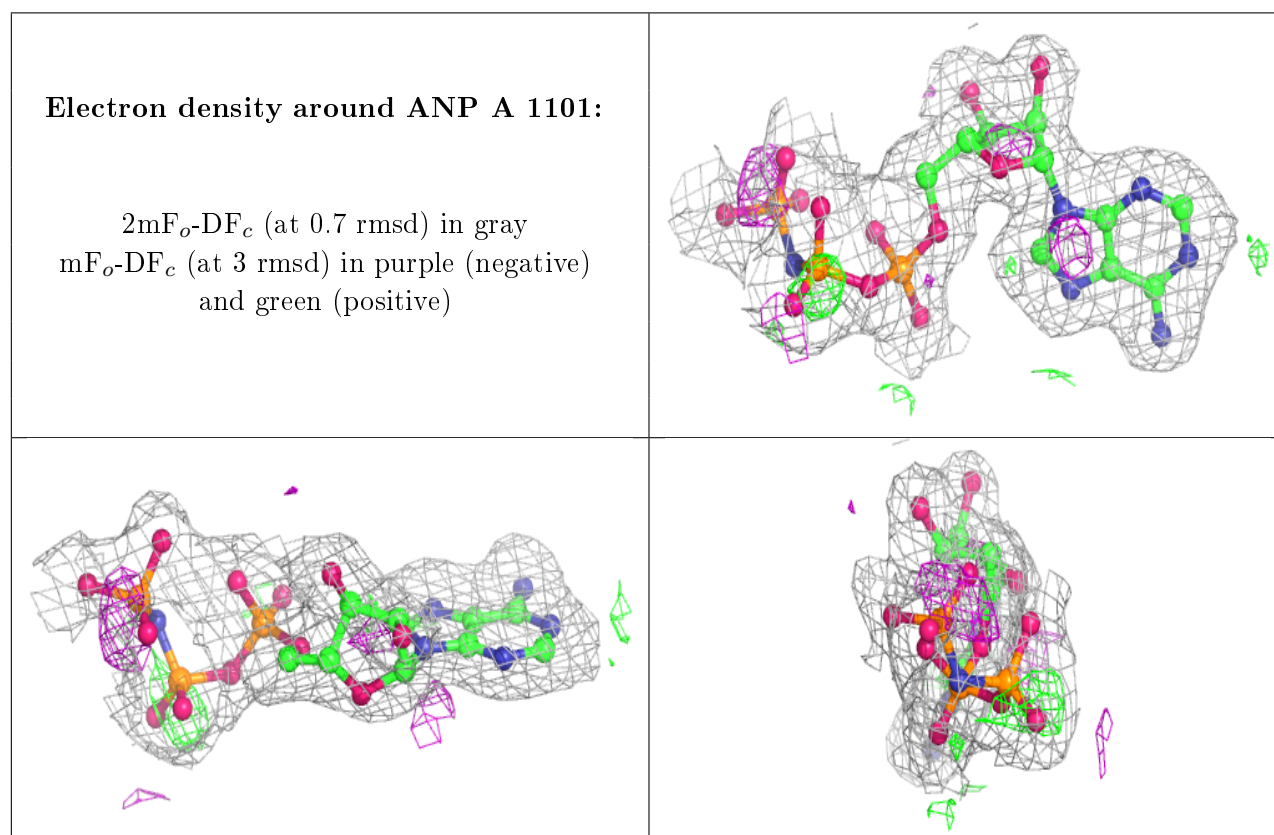
Mol	Type	Chain	Res	Atoms	RSCC	RSR	B-factors(Å ²)	Q<0.9
3	SO4	B	1104	5/5	0.78	0.24	114,118,119,120	0
2	ANP	A	1101	31/31	0.81	0.12	26,48,77,82	0
2	ANP	B	1101	31/31	0.83	0.14	33,48,75,82	0
3	SO4	A	1102	5/5	0.88	0.14	73,77,78,79	0

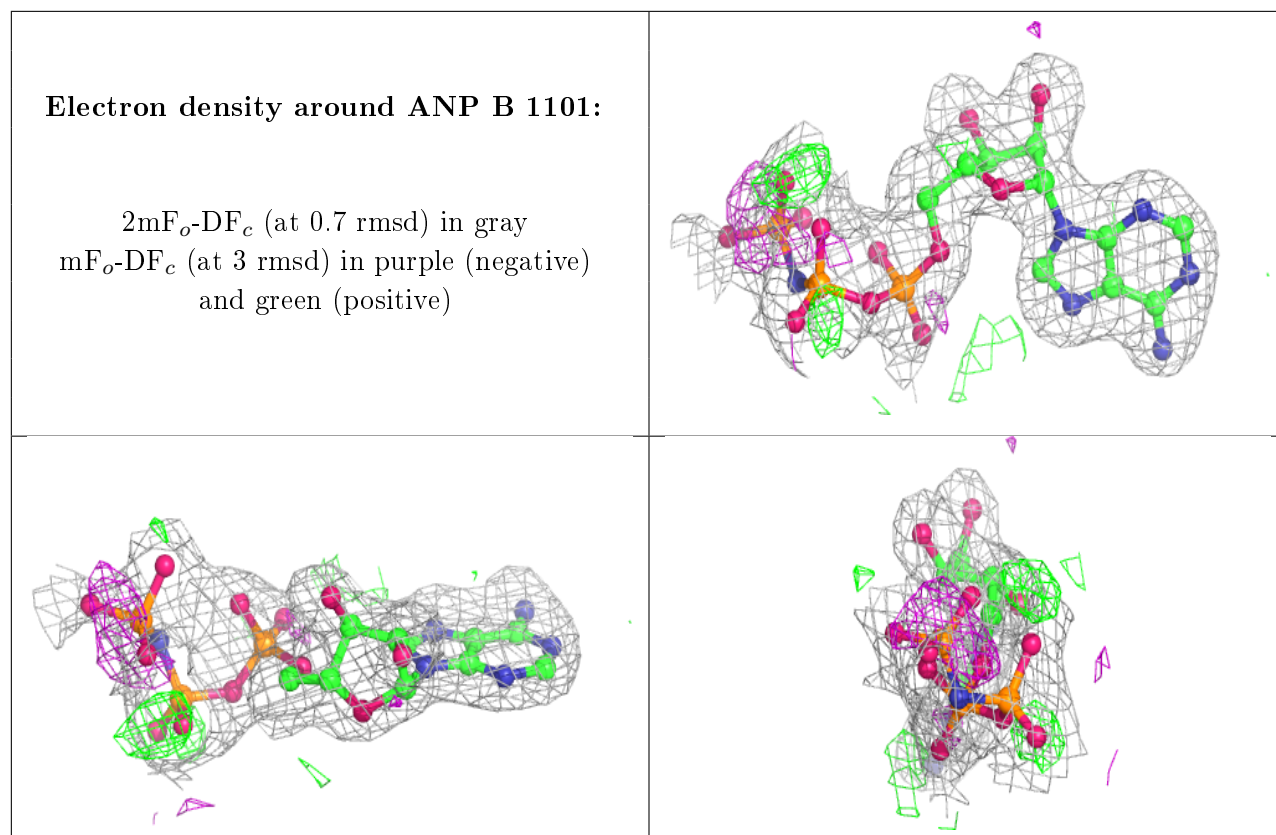
Continued on next page...

Continued from previous page...

Mol	Type	Chain	Res	Atoms	RSCC	RSR	B-factors(\AA^2)	Q<0.9
3	SO4	B	1102	5/5	0.88	0.16	60,65,65,66	0
4	MG	A	1103	1/1	0.89	0.10	75,75,75,75	0
3	SO4	B	1103	5/5	0.91	0.09	67,71,72,73	0

The following is a graphical depiction of the model fit to experimental electron density of all instances of the Ligand of Interest. In addition, ligands with molecular weight > 250 and outliers as shown on the geometry validation Tables will also be included. Each fit is shown from different orientation to approximate a three-dimensional view.





6.5 Other polymers [i](#)

There are no such residues in this entry.