



# Full wwPDB X-ray Structure Validation Report ⓘ

Mar 5, 2024 – 11:11 AM EST

PDB ID : 2IO7  
Title : E. coli Bifunctional glutathionylspermidine synthetase/amidase Incomplex with Mg<sup>2+</sup> and AMPPNP  
Authors : Pai, C.H.; Chiang, B.Y.; Ko, T.P.; Chong, C.M.; Yen, F.J.; Coward, J.K.; Wang, A.H.-J.; Lin, C.H.  
Deposited on : 2006-10-10  
Resolution : 2.70 Å(reported)

This is a Full wwPDB X-ray Structure Validation Report for a publicly released PDB entry.

We welcome your comments at [validation@mail.wwpdb.org](mailto:validation@mail.wwpdb.org)

A user guide is available at

<https://www.wwpdb.org/validation/2017/XrayValidationReportHelp>

with specific help available everywhere you see the ⓘ symbol.

The types of validation reports are described at

<http://www.wwpdb.org/validation/2017/FAQs#types>.

---

The following versions of software and data (see [references ⓘ](#)) were used in the production of this report:

MolProbity : 4.02b-467  
Mogul : 1.8.5 (274361), CSD as541be (2020)  
Xtrriage (Phenix) : 1.13  
EDS : 2.36  
buster-report : 1.1.7 (2018)  
Percentile statistics : 20191225.v01 (using entries in the PDB archive December 25th 2019)  
Refmac : 5.8.0158  
CCP4 : 7.0.044 (Gargrove)  
Ideal geometry (proteins) : Engh & Huber (2001)  
Ideal geometry (DNA, RNA) : Parkinson et al. (1996)  
Validation Pipeline (wwPDB-VP) : 2.36

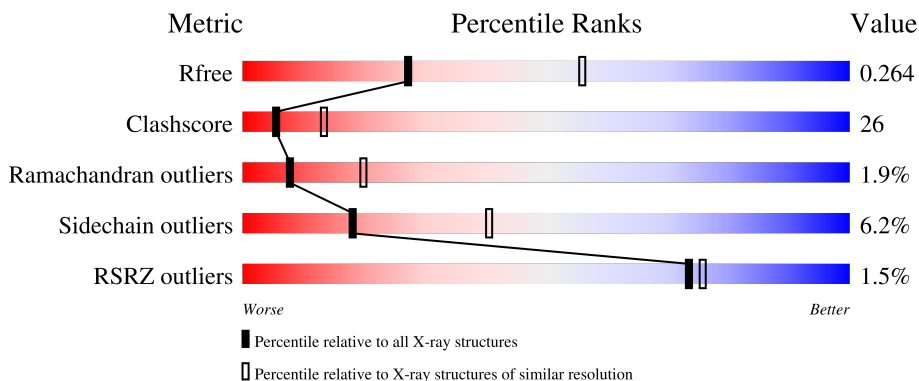
# 1 Overall quality at a glance

The following experimental techniques were used to determine the structure:

*X-RAY DIFFRACTION*

The reported resolution of this entry is 2.70 Å.

Percentile scores (ranging between 0-100) for global validation metrics of the entry are shown in the following graphic. The table shows the number of entries on which the scores are based.



Metric	Whole archive (#Entries)	Similar resolution (#Entries, resolution range(Å))
$R_{free}$	130704	2808 (2.70-2.70)
Clashscore	141614	3122 (2.70-2.70)
Ramachandran outliers	138981	3069 (2.70-2.70)
Sidechain outliers	138945	3069 (2.70-2.70)
RSRZ outliers	127900	2737 (2.70-2.70)

The table below summarises the geometric issues observed across the polymeric chains and their fit to the electron density. The red, orange, yellow and green segments of the lower bar indicate the fraction of residues that contain outliers for  $\geq 3$ , 2, 1 and 0 types of geometric quality criteria respectively. A grey segment represents the fraction of residues that are not modelled. The numeric value for each fraction is indicated below the corresponding segment, with a dot representing fractions  $\leq 5\%$ . The upper red bar (where present) indicates the fraction of residues that have poor fit to the electron density. The numeric value is given above the bar.

Mol	Chain	Length	Quality of chain
1	A	619	
1	B	619	

## 2 Entry composition [i](#)

There are 4 unique types of molecules in this entry. The entry contains 9983 atoms, of which 0 are hydrogens and 0 are deuteriums.

In the tables below, the ZeroOcc column contains the number of atoms modelled with zero occupancy, the AltConf column contains the number of residues with at least one atom in alternate conformation and the Trace column contains the number of residues modelled with at most 2 atoms.

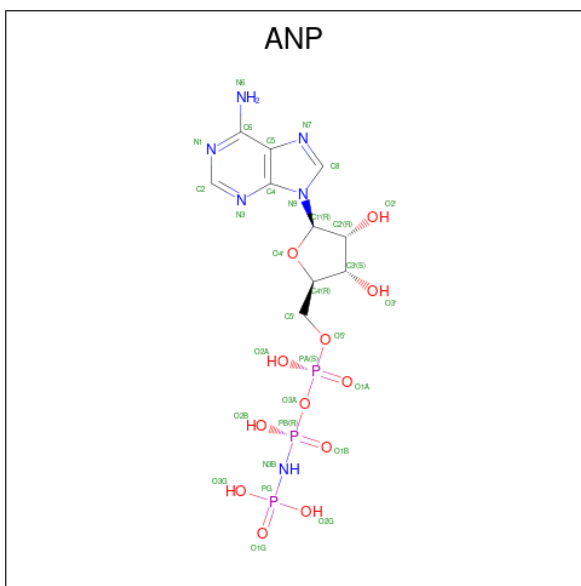
- Molecule 1 is a protein called Bifunctional glutathionylspermidine synthetase/amidase.

Mol	Chain	Residues	Atoms					ZeroOcc	AltConf	Trace
			Total	C	N	O	S			
1	A	587	Total 4729	C 3028	N 810	O 872	S 19	0	0	0
1	B	587	Total 4726	C 3028	N 811	O 868	S 19	0	0	0

- Molecule 2 is MAGNESIUM ION (three-letter code: MG) (formula: Mg).

Mol	Chain	Residues	Atoms		ZeroOcc	AltConf
2	A	2	Total 2	Mg 2	0	0
2	B	2	Total 2	Mg 2	0	0

- Molecule 3 is PHOSPHOAMINOPHOSPHONIC ACID-ADENYLATE ESTER (three-letter code: ANP) (formula:  $C_{10}H_{17}N_6O_{12}P_3$ ).



Mol	Chain	Residues	Atoms					ZeroOcc	AltConf
3	A	1	Total	C	N	O	P	0	0
			31	10	6	12	3		
3	B	1	Total	C	N	O	P	0	0
			31	10	6	12	3		

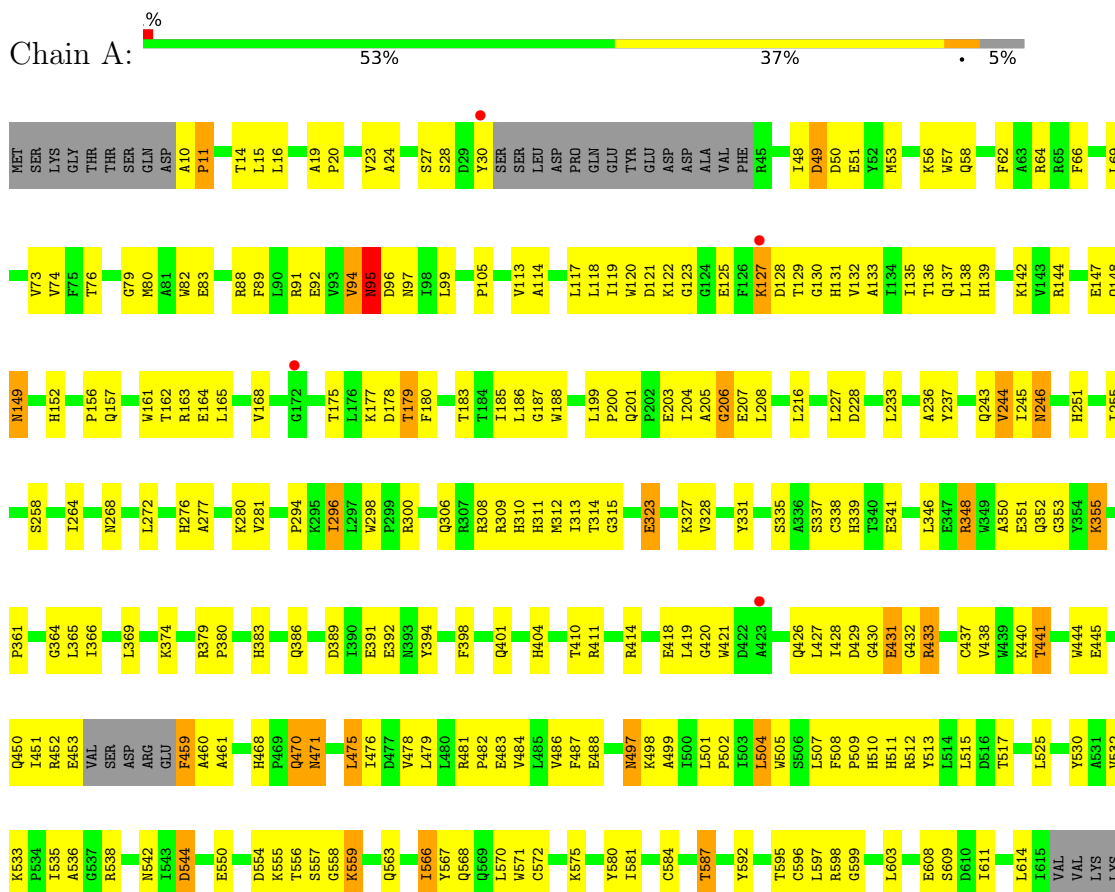
- Molecule 4 is water.

Mol	Chain	Residues	Atoms		ZeroOcc	AltConf
4	A	258	Total	O	0	0
			258	258		
4	B	204	Total	O	0	0
			204	204		

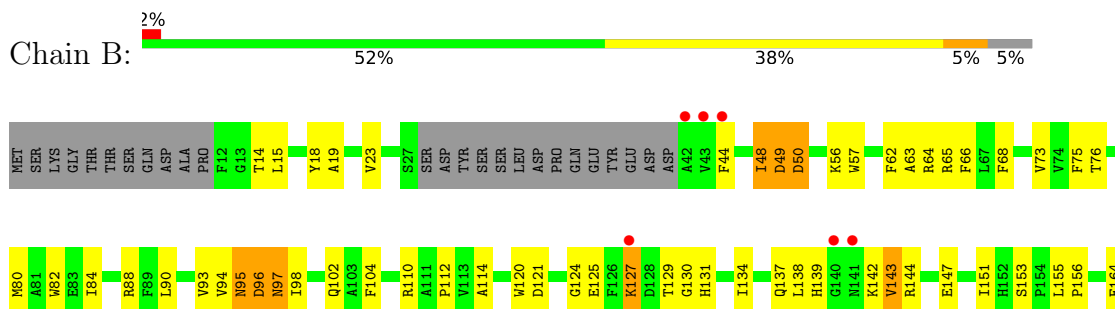
### 3 Residue-property plots

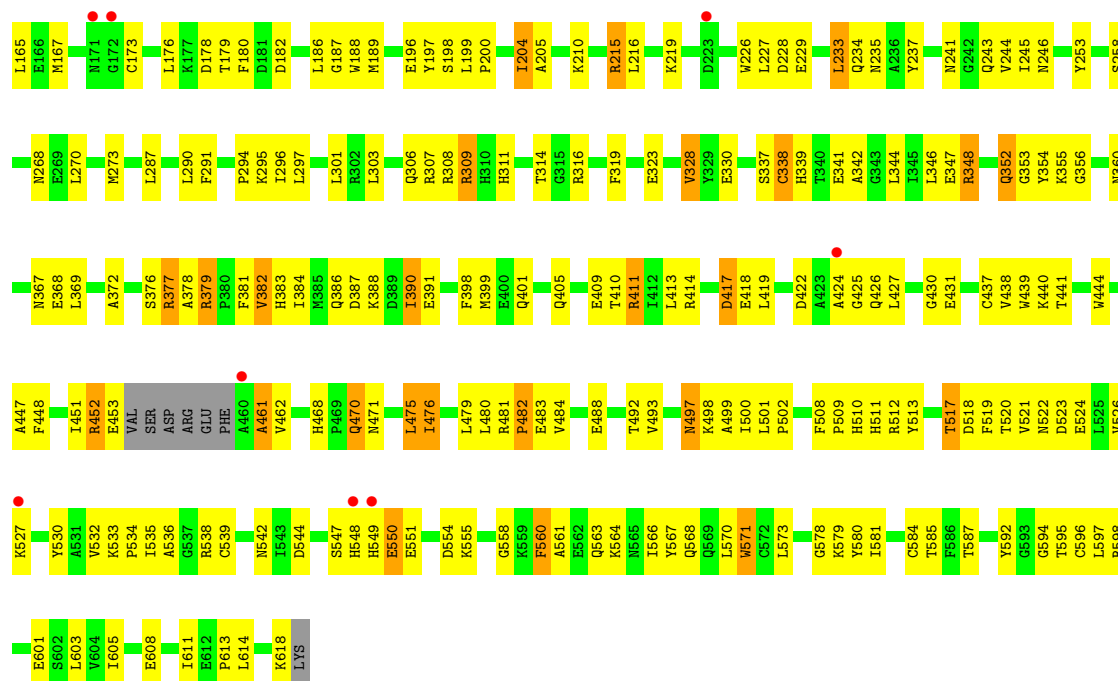
These plots are drawn for all protein, RNA, DNA and oligosaccharide chains in the entry. The first graphic for a chain summarises the proportions of the various outlier classes displayed in the second graphic. The second graphic shows the sequence view annotated by issues in geometry and electron density. Residues are color-coded according to the number of geometric quality criteria for which they contain at least one outlier: green = 0, yellow = 1, orange = 2 and red = 3 or more. A red dot above a residue indicates a poor fit to the electron density ( $RSRZ > 2$ ). Stretches of 2 or more consecutive residues without any outlier are shown as a green connector. Residues present in the sample, but not in the model, are shown in grey.

- Molecule 1: Bifunctional glutathionylspermidine synthetase/amidase



- Molecule 1: Bifunctional glutathionylspermidine synthetase/amidase





## 4 Data and refinement statistics

Property	Value	Source
Space group	P 1	Depositor
Cell constants a, b, c, $\alpha$ , $\beta$ , $\gamma$	60.01Å 75.54Å 84.06Å 70.67° 74.36° 78.22°	Depositor
Resolution (Å)	30.00 – 2.70 29.25 – 2.70	Depositor EDS
% Data completeness (in resolution range)	(Not available) (30.00-2.70) 90.5 (29.25-2.70)	Depositor EDS
$R_{merge}$	0.15	Depositor
$R_{sym}$	(Not available)	Depositor
$\langle I/\sigma(I) \rangle$ <sup>1</sup>	2.91 (at 2.72Å)	Xtrriage
Refinement program	CNS, XTALVIEW	Depositor
R, $R_{free}$	0.198 , 0.260 0.203 , 0.264	Depositor DCC
$R_{free}$ test set	1720 reflections (4.93%)	wwPDB-VP
Wilson B-factor (Å <sup>2</sup> )	31.9	Xtrriage
Anisotropy	0.351	Xtrriage
Bulk solvent $k_{sol}$ (e/Å <sup>3</sup> ), $B_{sol}$ (Å <sup>2</sup> )	0.32 , 39.7	EDS
L-test for twinning <sup>2</sup>	$\langle  L  \rangle = 0.48$ , $\langle L^2 \rangle = 0.31$	Xtrriage
Estimated twinning fraction	No twinning to report.	Xtrriage
$F_o, F_c$ correlation	0.92	EDS
Total number of atoms	9983	wwPDB-VP
Average B, all atoms (Å <sup>2</sup> )	18.0	wwPDB-VP

Xtrriage's analysis on translational NCS is as follows: *The largest off-origin peak in the Patterson function is 7.20% of the height of the origin peak. No significant pseudotranslation is detected.*

<sup>1</sup>Intensities estimated from amplitudes.

<sup>2</sup>Theoretical values of  $\langle |L| \rangle$ ,  $\langle L^2 \rangle$  for acentric reflections are 0.5, 0.333 respectively for untwinned datasets, and 0.375, 0.2 for perfectly twinned datasets.

## 5 Model quality [i](#)

### 5.1 Standard geometry [i](#)

Bond lengths and bond angles in the following residue types are not validated in this section: MG, ANP

The Z score for a bond length (or angle) is the number of standard deviations the observed value is removed from the expected value. A bond length (or angle) with  $|Z| > 5$  is considered an outlier worth inspection. RMSZ is the root-mean-square of all Z scores of the bond lengths (or angles).

Mol	Chain	Bond lengths		Bond angles	
		RMSZ	# Z  >5	RMSZ	# Z  >5
1	A	0.61	0/4851	0.77	2/6587 (0.0%)
1	B	0.59	0/4846	0.76	2/6579 (0.0%)
All	All	0.60	0/9697	0.77	4/13166 (0.0%)

There are no bond length outliers.

All (4) bond angle outliers are listed below:

Mol	Chain	Res	Type	Atoms	Z	Observed(°)	Ideal(°)
1	A	453	GLU	CA-CB-CG	6.13	126.89	113.40
1	B	130	GLY	N-CA-C	-5.82	98.55	113.10
1	A	566	ILE	N-CA-C	-5.56	95.99	111.00
1	B	48	ILE	N-CA-C	-5.12	97.19	111.00

There are no chirality outliers.

There are no planarity outliers.

### 5.2 Too-close contacts [i](#)

In the following table, the Non-H and H(model) columns list the number of non-hydrogen atoms and hydrogen atoms in the chain respectively. The H(added) column lists the number of hydrogen atoms added and optimized by MolProbity. The Clashes column lists the number of clashes within the asymmetric unit, whereas Symm-Clashes lists symmetry-related clashes.

Mol	Chain	Non-H	H(model)	H(added)	Clashes	Symm-Clashes
1	A	4729	0	4601	245	0
1	B	4726	0	4616	243	0
2	A	2	0	0	0	0
2	B	2	0	0	0	0
3	A	31	0	13	1	0

*Continued on next page...*



*Continued from previous page...*

Mol	Chain	Non-H	H(model)	H(added)	Clashes	Symm-Clashes
3	B	31	0	13	4	0
4	A	258	0	0	8	0
4	B	204	0	0	7	0
All	All	9983	0	9243	485	0

The all-atom clashscore is defined as the number of clashes found per 1000 atoms (including hydrogen atoms). The all-atom clashscore for this structure is 26.

All (485) close contacts within the same asymmetric unit are listed below, sorted by their clash magnitude.

Atom-1	Atom-2	Interatomic distance (Å)	Clash overlap (Å)
1:A:355:LYS:HE3	1:A:355:LYS:H	1.14	1.10
1:A:497:ASN:ND2	1:A:499:ALA:H	1.59	1.00
1:A:536:ALA:H	1:A:563:GLN:NE2	1.59	1.00
1:A:139:HIS:HB2	1:A:142:LYS:HG2	1.44	0.98
1:A:392:GLU:OE1	1:A:441:THR:HG21	1.67	0.95
1:B:367:ASN:ND2	1:B:405:GLN:HE22	1.65	0.94
1:B:497:ASN:HD21	1:B:535:ILE:HB	1.33	0.90
1:A:389:ASP:HB3	1:A:391:GLU:HG2	1.53	0.90
1:B:497:ASN:HD22	1:B:498:LYS:N	1.69	0.89
1:A:421:TRP:H	1:A:471:ASN:HD21	1.21	0.87
1:A:497:ASN:HD22	1:A:498:LYS:N	1.71	0.86
1:A:355:LYS:HE3	1:A:355:LYS:N	1.92	0.85
1:B:534:PRO:HB2	1:B:563:GLN:HE21	1.39	0.85
1:A:48:ILE:HD13	1:A:69:LEU:HD21	1.58	0.85
1:A:114:ALA:HA	1:A:135:ILE:HG22	1.59	0.85
1:B:524:GLU:OE1	1:B:524:GLU:N	2.10	0.85
1:A:308:ARG:HG3	1:A:308:ARG:HH11	1.42	0.84
1:B:268:ASN:HD21	1:B:592:TYR:H	1.24	0.83
1:A:497:ASN:HD22	1:A:497:ASN:C	1.82	0.82
1:B:210:LYS:HE3	1:B:323:GLU:H	1.44	0.82
1:A:64:ARG:HG3	1:A:74:VAL:HG23	1.61	0.82
1:A:598:ARG:HD3	1:A:611:ILE:HD13	1.61	0.82
1:A:483:GLU:CD	1:A:483:GLU:H	1.82	0.82
1:B:523:ASP:O	1:B:526:VAL:HG12	1.80	0.81
1:A:10:ALA:HB1	1:A:14:THR:HG21	1.63	0.80
1:B:44:PHE:O	1:B:56:LYS:HG3	1.80	0.80
1:B:96:ASP:CG	1:B:309:ARG:HH12	1.84	0.79
1:A:268:ASN:HD21	1:A:592:TYR:H	1.31	0.77
1:A:341:GLU:HG2	1:A:611:ILE:HG13	1.65	0.77
1:A:355:LYS:H	1:A:355:LYS:CE	1.95	0.77

*Continued on next page...*

*Continued from previous page...*

Atom-1	Atom-2	Interatomic distance (Å)	Clash overlap (Å)
1:B:68:PHE:HE1	1:B:93:VAL:HG21	1.50	0.77
1:B:390:ILE:HD13	1:B:391:GLU:N	2.01	0.76
1:B:124:GLY:HA3	1:B:182:ASP:O	1.86	0.76
1:A:497:ASN:HD22	1:A:499:ALA:H	1.30	0.76
1:B:413:LEU:HD13	1:B:419:LEU:HD11	1.66	0.76
1:B:270:LEU:HD13	1:B:328:VAL:HG11	1.67	0.75
1:A:178:ASP:HB2	1:A:185:ILE:HD11	1.66	0.75
1:A:426:GLN:HA	1:A:481:ARG:HH22	1.51	0.75
1:A:497:ASN:HD21	1:A:535:ILE:HB	1.51	0.75
1:B:367:ASN:HD22	1:B:405:GLN:HE22	1.31	0.74
1:A:587:THR:HG23	4:A:5129:HOH:O	1.88	0.74
1:A:15:LEU:HD12	1:B:424:ALA:HB1	1.69	0.74
1:A:308:ARG:HA	1:A:311:HIS:CD2	2.24	0.73
1:B:80:MET:HE3	1:B:129:THR:HA	1.69	0.73
1:A:331:TYR:OH	1:A:587:THR:HG21	1.88	0.73
1:A:300:ARG:HH22	1:A:482:PRO:HG3	1.53	0.73
1:B:544:ASP:OD1	1:B:555:LYS:HE2	1.89	0.73
1:B:511:HIS:HE1	1:B:513:TYR:CD2	2.07	0.72
1:B:383:HIS:HB2	1:B:438:VAL:HG12	1.71	0.72
1:A:48:ILE:O	1:A:49:ASP:HB2	1.89	0.72
1:B:341:GLU:HG2	1:B:611:ILE:HG13	1.72	0.71
1:A:62:PHE:HB2	1:A:148:GLN:NE2	2.05	0.71
1:A:300:ARG:NH2	1:A:482:PRO:HG3	2.04	0.71
1:B:520:THR:HG22	1:B:521:VAL:N	2.06	0.71
1:A:536:ALA:N	1:A:563:GLN:NE2	2.38	0.70
1:B:210:LYS:HE3	1:B:323:GLU:N	2.06	0.70
1:A:550:GLU:O	1:A:550:GLU:HG2	1.92	0.69
1:A:580:TYR:O	1:A:599:GLY:HA2	1.92	0.69
1:A:420:GLY:O	1:A:428:ILE:HG12	1.91	0.69
1:B:215:ARG:HH11	1:B:215:ARG:HG3	1.57	0.69
1:B:309:ARG:HG3	1:B:309:ARG:HH11	1.57	0.68
1:B:246:ASN:ND2	1:B:613:PRO:HD3	2.08	0.68
1:A:277:ALA:HB2	1:A:504:LEU:HD13	1.75	0.68
1:A:481:ARG:HG3	1:A:483:GLU:OE1	1.94	0.68
1:B:84:ILE:HG22	1:B:189:MET:HE1	1.76	0.68
1:B:337:SER:O	1:B:338:CYS:HB2	1.93	0.68
1:B:452:ARG:HG2	4:B:5320:HOH:O	1.93	0.68
1:A:308:ARG:HG3	1:A:308:ARG:NH1	2.09	0.67
1:B:517:THR:HB	1:B:568:GLN:HA	1.76	0.67
1:B:390:ILE:HD13	1:B:391:GLU:H	1.57	0.67
1:A:361:PRO:HG3	1:A:614:LEU:HD23	1.76	0.67

*Continued on next page...*

*Continued from previous page...*

Atom-1	Atom-2	Interatomic distance (Å)	Clash overlap (Å)
1:B:227:LEU:HB2	1:B:243:GLN:HE22	1.59	0.67
1:B:297:LEU:O	1:B:301:LEU:HD13	1.93	0.67
1:A:572:CYS:HB3	1:A:603:LEU:HD22	1.75	0.66
1:A:337:SER:O	1:A:338:CYS:HB2	1.95	0.66
1:B:498:LYS:HB3	1:B:566:ILE:HG12	1.76	0.66
1:B:425:GLY:O	1:B:481:ARG:NH2	2.25	0.66
1:B:80:MET:CE	1:B:129:THR:HA	2.25	0.66
1:A:536:ALA:N	1:A:563:GLN:HE22	1.93	0.66
1:A:536:ALA:H	1:A:563:GLN:HE22	1.36	0.65
1:B:226:TRP:HB2	1:B:352:GLN:HG2	1.79	0.65
1:A:48:ILE:CD1	1:A:69:LEU:HD21	2.26	0.65
1:A:294:PRO:HD3	1:A:452:ARG:NH1	2.12	0.65
1:A:294:PRO:HD3	1:A:452:ARG:HH12	1.61	0.65
1:A:53:MET:O	1:A:64:ARG:HD2	1.97	0.65
1:A:351:GLU:O	1:A:351:GLU:HG2	1.97	0.65
1:A:497:ASN:ND2	1:A:499:ALA:N	2.39	0.64
1:A:536:ALA:H	1:A:563:GLN:HE21	1.39	0.64
1:B:314:THR:OG1	1:B:339:HIS:HE1	1.81	0.64
1:B:475:LEU:HD21	1:B:479:LEU:HD11	1.79	0.64
1:A:80:MET:CE	1:A:129:THR:HA	2.29	0.63
1:A:11:PRO:O	1:A:14:THR:HG22	1.97	0.63
1:B:76:THR:HG22	4:B:5184:HOH:O	1.98	0.63
1:B:532:VAL:HB	1:B:544:ASP:HB2	1.79	0.63
1:A:144:ARG:HG2	1:A:164:GLU:HG2	1.80	0.63
1:A:80:MET:HE1	1:A:129:THR:HA	1.81	0.63
1:A:365:LEU:O	1:A:369:LEU:HB2	1.98	0.63
1:A:161:TRP:CZ3	1:A:164:GLU:HG3	2.34	0.62
1:A:315:GLY:H	1:A:587:THR:HG22	1.63	0.62
1:A:122:LYS:HB2	1:A:128:ASP:HA	1.81	0.62
1:A:95:ASN:C	1:A:95:ASN:HD22	2.03	0.62
1:B:605:ILE:HB	3:B:965:ANP:O3'	2.00	0.61
1:B:309:ARG:HD3	1:B:309:ARG:C	2.21	0.61
1:A:315:GLY:N	1:A:587:THR:HG22	2.16	0.61
1:B:520:THR:HG22	1:B:521:VAL:H	1.66	0.61
1:A:79:GLY:N	1:A:83:GLU:OE1	2.34	0.61
1:A:426:GLN:HA	1:A:481:ARG:NH2	2.16	0.61
1:A:121:ASP:HB2	1:A:186:LEU:HG	1.82	0.60
1:B:452:ARG:O	1:B:453:GLU:HG3	2.01	0.60
1:A:497:ASN:ND2	1:A:497:ASN:C	2.54	0.60
1:B:80:MET:HE3	1:B:129:THR:CA	2.30	0.60
1:A:517:THR:HG23	1:A:568:GLN:HB2	1.82	0.60

*Continued on next page...*

*Continued from previous page...*

Atom-1	Atom-2	Interatomic distance (Å)	Clash overlap (Å)
1:A:483:GLU:CD	1:A:483:GLU:N	2.54	0.60
1:B:151:ILE:HD12	1:B:151:ILE:N	2.16	0.60
1:B:241:ASN:O	1:B:244:VAL:HG22	2.01	0.60
1:B:48:ILE:O	1:B:49:ASP:HB2	2.00	0.60
1:B:348:ARG:NH1	1:B:352:GLN:NE2	2.50	0.60
1:B:379:ARG:HB2	1:B:437:CYS:HB2	1.84	0.60
1:B:497:ASN:ND2	1:B:499:ALA:H	2.00	0.60
1:B:204:ILE:HD13	1:B:205:ALA:N	2.17	0.59
1:A:445:GLU:HB3	4:A:5051:HOH:O	2.01	0.59
1:A:536:ALA:CA	1:A:563:GLN:HE22	2.14	0.59
1:A:597:LEU:O	1:A:598:ARG:HG2	2.02	0.59
1:B:245:ILE:HG13	1:B:246:ASN:N	2.15	0.59
1:B:354:TYR:CZ	1:B:356:GLY:HA3	2.37	0.59
1:A:216:LEU:HD13	1:A:353:GLY:O	2.02	0.59
1:B:227:LEU:HB2	1:B:243:GLN:NE2	2.16	0.59
1:A:497:ASN:ND2	1:A:498:LYS:N	2.47	0.59
1:B:294:PRO:HD2	1:B:297:LEU:HD12	1.84	0.59
1:A:597:LEU:HD11	1:A:614:LEU:HD13	1.85	0.59
1:B:497:ASN:HD22	1:B:497:ASN:C	2.00	0.59
1:B:104:PHE:CE2	1:B:110:ARG:HG2	2.38	0.59
1:A:364:GLY:N	4:A:5035:HOH:O	2.26	0.58
1:B:229:GLU:HB3	1:B:235:ASN:ND2	2.18	0.58
1:B:497:ASN:ND2	1:B:535:ILE:HB	2.10	0.58
1:B:97:ASN:HD22	1:B:98:ILE:H	1.49	0.58
1:A:497:ASN:HD22	1:A:499:ALA:N	2.01	0.58
1:A:30:TYR:HE2	1:A:58:GLN:HE22	1.51	0.58
1:A:308:ARG:NE	1:A:311:HIS:HD2	2.01	0.58
1:B:97:ASN:HD22	1:B:98:ILE:N	2.02	0.58
1:B:330:GLU:OE2	3:B:965:ANP:N3B	2.37	0.57
1:A:137:GLN:HG2	1:A:144:ARG:HB2	1.85	0.57
1:A:203:GLU:OE2	1:A:203:GLU:HA	2.05	0.57
1:B:401:GLN:OE1	1:B:401:GLN:HA	2.04	0.57
1:A:335:SER:OG	1:A:538:ARG:NH2	2.36	0.57
1:B:535:ILE:HG23	1:B:564:LYS:O	2.05	0.57
1:B:15:LEU:HD11	1:B:18:TYR:OH	2.05	0.56
1:B:246:ASN:HD21	1:B:613:PRO:HD3	1.70	0.56
1:A:20:PRO:HG2	1:A:136:THR:HB	1.87	0.56
1:A:355:LYS:N	1:A:355:LYS:CE	2.63	0.56
1:B:84:ILE:HG22	1:B:189:MET:CE	2.34	0.56
1:B:131:HIS:HE1	1:B:147:GLU:OE1	1.87	0.56
1:B:497:ASN:O	1:B:500:ILE:HG22	2.05	0.56

*Continued on next page...*

*Continued from previous page...*

Atom-1	Atom-2	Interatomic distance (Å)	Clash overlap (Å)
1:B:532:VAL:HG22	1:B:567:TYR:CE1	2.40	0.56
1:A:542:ASN:OD1	1:A:558:GLY:HA3	2.06	0.56
1:A:544:ASP:OD2	1:A:555:LYS:HE2	2.05	0.56
1:B:303:LEU:HD13	1:B:307:ARG:NH2	2.20	0.56
1:B:308:ARG:HA	1:B:311:HIS:ND1	2.21	0.56
1:A:277:ALA:O	1:A:281:VAL:HG23	2.06	0.56
1:B:534:PRO:HB2	1:B:563:GLN:NE2	2.15	0.56
1:A:379:ARG:HG3	1:A:380:PRO:HD2	1.87	0.55
1:A:138:LEU:O	1:A:139:HIS:CD2	2.59	0.55
1:A:15:LEU:CD2	1:A:24:ALA:HB1	2.36	0.55
1:A:429:ASP:OD1	1:A:433:ARG:HG2	2.07	0.55
1:B:296:ILE:HD11	1:B:461:ALA:HA	1.88	0.55
1:B:337:SER:O	1:B:338:CYS:CB	2.53	0.55
1:A:80:MET:HG2	4:A:5188:HOH:O	2.05	0.55
1:B:94:VAL:HG13	4:B:5167:HOH:O	2.06	0.55
1:B:570:LEU:O	1:B:571:TRP:HB2	2.05	0.55
1:B:125:GLU:HG2	1:B:180:PHE:CE2	2.42	0.55
1:B:422:ASP:OD2	1:B:426:GLN:HB2	2.07	0.55
1:B:497:ASN:HD22	1:B:498:LYS:H	1.53	0.55
1:A:497:ASN:ND2	1:A:535:ILE:HB	2.21	0.54
1:B:138:LEU:HD12	1:B:143:VAL:HG23	1.87	0.54
1:A:243:GLN:C	1:A:244:VAL:HG12	2.27	0.54
1:A:512:ARG:HB2	4:A:5030:HOH:O	2.07	0.54
1:B:584:CYS:HB2	1:B:596:CYS:SG	2.47	0.54
1:A:296:ILE:HD11	1:A:461:ALA:HA	1.88	0.54
1:A:121:ASP:HB2	1:A:186:LEU:CG	2.37	0.54
1:B:498:LYS:HB2	1:B:535:ILE:HA	1.90	0.54
1:B:501:LEU:HB2	1:B:502:PRO:HD3	1.89	0.54
1:A:483:GLU:HG2	4:B:5349:HOH:O	2.07	0.54
1:B:127:LYS:H	1:B:127:LYS:HD2	1.72	0.54
1:A:64:ARG:CG	1:A:74:VAL:HG23	2.36	0.54
1:A:113:VAL:HG22	1:A:114:ALA:N	2.21	0.53
1:B:215:ARG:HG3	1:B:215:ARG:NH1	2.22	0.53
1:B:355:LYS:HD2	1:B:355:LYS:N	2.23	0.53
1:B:538:ARG:O	1:B:539:CYS:HB2	2.08	0.53
1:A:501:LEU:HB2	1:A:502:PRO:HD3	1.91	0.53
1:B:451:ILE:O	1:B:453:GLU:N	2.33	0.53
1:B:476:ILE:HG12	1:B:476:ILE:O	2.07	0.53
1:A:314:THR:OG1	1:A:339:HIS:HE1	1.91	0.53
1:B:82:TRP:HD1	1:B:129:THR:O	1.90	0.53
1:B:376:SER:O	1:B:378:ALA:N	2.37	0.53

*Continued on next page...*

*Continued from previous page...*

Atom-1	Atom-2	Interatomic distance (Å)	Clash overlap (Å)
1:B:319:PHE:CE2	1:B:328:VAL:HG13	2.44	0.53
1:B:342:ALA:HA	1:B:346:LEU:HD12	1.91	0.53
1:B:80:MET:HE3	1:B:129:THR:HG22	1.91	0.53
1:A:542:ASN:HA	1:A:556:THR:O	2.08	0.52
1:B:306:GLN:O	1:B:306:GLN:HG2	2.09	0.52
1:A:16:LEU:HD21	1:A:27:SER:HB2	1.91	0.52
1:A:51:GLU:OE1	1:A:91:ARG:NH2	2.39	0.52
1:A:313:ILE:HD11	1:A:487:PHE:CE2	2.44	0.52
1:A:15:LEU:HD23	1:A:24:ALA:HB1	1.91	0.52
1:B:216:LEU:HD13	1:B:353:GLY:O	2.10	0.52
1:B:268:ASN:ND2	1:B:592:TYR:H	2.02	0.52
1:B:413:LEU:CD1	1:B:419:LEU:HD11	2.37	0.52
1:A:313:ILE:HB	1:A:488:GLU:OE1	2.10	0.52
1:B:381:PHE:CD1	1:B:409:GLU:HB2	2.45	0.52
1:B:104:PHE:O	1:B:187:GLY:HA3	2.10	0.51
1:B:314:THR:HA	1:B:587:THR:O	2.09	0.51
1:B:518:ASP:OD2	1:B:519:PHE:N	2.38	0.51
1:B:542:ASN:ND2	1:B:561:ALA:HB2	2.25	0.51
1:A:312:MET:HA	1:A:488:GLU:OE2	2.11	0.51
1:A:512:ARG:CB	1:A:512:ARG:HH11	2.23	0.51
1:B:96:ASP:OD1	1:B:309:ARG:NH1	2.42	0.51
1:A:245:ILE:HG13	1:A:246:ASN:ND2	2.26	0.51
1:A:255:ILE:HG23	1:A:614:LEU:HD11	1.93	0.51
1:B:387:ASP:OD1	1:B:388:LYS:N	2.43	0.51
1:B:411:ARG:HG2	1:B:411:ARG:HH11	1.75	0.51
1:A:95:ASN:ND2	1:A:97:ASN:HB3	2.26	0.51
1:B:532:VAL:O	1:B:533:LYS:HG2	2.11	0.51
1:A:125:GLU:HB3	1:A:183:THR:HG21	1.93	0.51
1:A:392:GLU:OE1	1:A:441:THR:CG2	2.50	0.51
1:A:536:ALA:HB3	1:A:563:GLN:HE22	1.75	0.51
1:B:388:LYS:HG3	1:B:414:ARG:NH2	2.26	0.51
1:A:451:ILE:HG13	1:A:476:ILE:HD12	1.92	0.51
1:A:56:LYS:HB3	1:A:57:TRP:CD1	2.46	0.50
1:B:348:ARG:NH1	1:B:352:GLN:HE22	2.09	0.50
1:B:137:GLN:CG	1:B:144:ARG:HB2	2.42	0.50
1:A:131:HIS:HE1	1:A:147:GLU:OE2	1.95	0.50
1:A:559:LYS:H	1:A:559:LYS:HD2	1.77	0.50
1:B:481:ARG:NH1	1:B:483:GLU:CD	2.64	0.50
1:A:113:VAL:CG2	1:A:114:ALA:N	2.73	0.50
1:A:139:HIS:HB2	1:A:142:LYS:CG	2.28	0.50
1:A:427:LEU:HD11	1:A:478:VAL:HG22	1.94	0.50

*Continued on next page...*

*Continued from previous page...*

Atom-1	Atom-2	Interatomic distance (Å)	Clash overlap (Å)
1:B:112:PRO:HB3	1:B:188:TRP:CD2	2.47	0.50
1:B:431:GLU:OE2	1:B:431:GLU:HA	2.12	0.50
1:A:168:VAL:HG22	1:A:175:THR:HB	1.94	0.50
1:A:595:THR:HG22	1:A:596:CYS:N	2.27	0.50
1:B:481:ARG:HB3	1:B:484:VAL:HG23	1.94	0.50
1:B:497:ASN:ND2	1:B:497:ASN:C	2.63	0.50
1:B:253:TYR:CZ	1:B:581:ILE:HD11	2.47	0.50
1:A:121:ASP:OD2	1:A:122:LYS:N	2.45	0.49
1:A:532:VAL:HB	1:A:544:ASP:HB2	1.94	0.49
1:A:246:ASN:N	1:A:246:ASN:HD22	2.10	0.49
1:A:584:CYS:HB2	1:A:596:CYS:SG	2.53	0.49
1:B:532:VAL:C	1:B:533:LYS:HG2	2.32	0.49
1:B:580:TYR:CE2	1:B:603:LEU:HD12	2.48	0.49
1:B:96:ASP:OD2	1:B:309:ARG:NH1	2.46	0.49
1:B:303:LEU:HD13	1:B:307:ARG:HH21	1.78	0.49
1:B:488:GLU:HB3	1:B:492:THR:HG21	1.93	0.49
1:A:437:CYS:O	1:A:438:VAL:HG23	2.13	0.49
1:A:245:ILE:HG13	1:A:246:ASN:N	2.28	0.49
1:A:139:HIS:CB	1:A:142:LYS:HG2	2.30	0.49
1:B:314:THR:HG21	1:B:339:HIS:CE1	2.48	0.49
1:A:82:TRP:HB3	1:A:130:GLY:HA3	1.94	0.48
1:B:199:LEU:HB2	1:B:200:PRO:HD2	1.95	0.48
1:A:121:ASP:HB2	1:A:186:LEU:CD2	2.43	0.48
1:A:227:LEU:HB2	1:A:243:GLN:OE1	2.13	0.48
1:A:23:VAL:HG21	1:A:66:PHE:CD1	2.49	0.48
1:B:155:LEU:HB3	1:B:156:PRO:HD2	1.95	0.48
1:B:523:ASP:O	1:B:526:VAL:CG1	2.57	0.48
1:A:80:MET:HE3	1:A:128:ASP:O	2.14	0.48
1:A:404:HIS:NE2	1:A:410:THR:OG1	2.45	0.48
1:B:601:GLU:CD	1:B:601:GLU:H	2.17	0.48
1:A:88:ARG:O	1:A:89:PHE:HB3	2.13	0.48
1:A:163:ARG:NH1	1:A:179:THR:OG1	2.47	0.48
1:A:264:ILE:HG12	1:A:592:TYR:CD2	2.49	0.48
1:B:204:ILE:HD13	1:B:205:ALA:H	1.77	0.48
1:B:527:LYS:O	1:B:548:HIS:HB2	2.13	0.48
1:B:532:VAL:HG22	1:B:567:TYR:CD1	2.49	0.48
1:A:125:GLU:HB3	1:A:183:THR:CG2	2.43	0.48
1:A:535:ILE:HG22	1:A:566:ILE:HG23	1.94	0.48
1:B:270:LEU:HD13	1:B:328:VAL:CG1	2.40	0.48
1:A:168:VAL:CG2	1:A:175:THR:HB	2.43	0.48
1:B:418:GLU:HG2	1:B:430:GLY:CA	2.43	0.48

*Continued on next page...*



*Continued from previous page...*

Atom-1	Atom-2	Interatomic distance (Å)	Clash overlap (Å)
1:B:595:THR:HG22	1:B:596:CYS:N	2.28	0.48
1:A:27:SER:OG	1:A:152:HIS:HB3	2.14	0.48
1:A:460:ALA:HB2	1:B:114:ALA:CB	2.44	0.48
1:B:210:LYS:CE	1:B:323:GLU:H	2.21	0.48
1:B:352:GLN:OE1	1:B:352:GLN:HA	2.13	0.48
1:B:382:VAL:O	1:B:410:THR:HA	2.13	0.47
1:B:440:LYS:HE2	1:B:444:TRP:NE1	2.29	0.47
1:B:444:TRP:HB2	1:B:493:VAL:CG1	2.44	0.47
1:B:520:THR:CG2	1:B:521:VAL:N	2.74	0.47
1:A:507:LEU:C	1:A:509:PRO:HD3	2.34	0.47
1:B:444:TRP:HB2	1:B:493:VAL:HG11	1.94	0.47
1:B:475:LEU:HD22	1:B:479:LEU:HG	1.96	0.47
1:A:118:LEU:C	1:A:119:ILE:HD13	2.34	0.47
1:A:137:GLN:OE1	1:A:144:ARG:HD2	2.14	0.47
1:A:308:ARG:NH1	1:A:308:ARG:CG	2.75	0.47
1:A:308:ARG:HE	1:A:311:HIS:CD2	2.31	0.47
1:A:532:VAL:O	1:A:533:LYS:HG2	2.15	0.47
1:B:517:THR:CG2	1:B:568:GLN:HG3	2.45	0.47
1:B:56:LYS:HA	1:B:57:TRP:HA	1.64	0.47
1:A:30:TYR:OH	1:A:58:GLN:OE1	2.33	0.47
1:A:92:GLU:HB3	1:A:95:ASN:HD21	1.78	0.47
1:A:598:ARG:HD3	1:A:611:ILE:CD1	2.40	0.47
1:B:15:LEU:HD11	1:B:18:TYR:CZ	2.50	0.47
1:B:273:MET:HG2	1:B:508:PHE:CE2	2.50	0.47
1:B:309:ARG:HD3	1:B:309:ARG:O	2.14	0.47
1:B:468:HIS:CE1	1:B:470:GLN:HE21	2.32	0.47
1:A:80:MET:SD	1:A:129:THR:HA	2.54	0.47
1:A:138:LEU:O	1:A:139:HIS:HD2	1.97	0.47
1:A:308:ARG:CD	1:A:311:HIS:HD2	2.28	0.47
1:A:15:LEU:CD1	1:B:424:ALA:HB1	2.40	0.47
1:B:475:LEU:CD2	1:B:479:LEU:HD11	2.44	0.47
1:A:306:GLN:OE1	1:B:94:VAL:HA	2.16	0.46
1:B:63:ALA:HA	1:B:134:ILE:HD11	1.98	0.46
1:B:176:LEU:HD12	1:B:188:TRP:CZ3	2.49	0.46
1:B:447:ALA:HB2	1:B:475:LEU:HD13	1.97	0.46
3:B:965:ANP:O5'	3:B:965:ANP:H8	2.14	0.46
1:A:80:MET:N	1:A:83:GLU:OE1	2.38	0.46
1:A:121:ASP:HB2	1:A:186:LEU:HD21	1.98	0.46
3:A:964:ANP:O5'	3:A:964:ANP:H8	2.14	0.46
1:B:309:ARG:HH11	1:B:309:ARG:CG	2.27	0.46
1:B:573:LEU:HD22	1:B:581:ILE:O	2.16	0.46

*Continued on next page...*



*Continued from previous page...*

Atom-1	Atom-2	Interatomic distance (Å)	Clash overlap (Å)
1:A:508:PHE:N	1:A:509:PRO:HD3	2.31	0.46
1:B:178:ASP:OD1	1:B:179:THR:N	2.48	0.46
1:B:452:ARG:C	1:B:453:GLU:HG3	2.36	0.46
1:A:308:ARG:HE	1:A:311:HIS:HD2	1.61	0.46
1:B:290:LEU:HD13	1:B:519:PHE:CZ	2.50	0.46
1:A:350:ALA:C	1:A:352:GLN:N	2.68	0.46
1:A:389:ASP:C	1:A:391:GLU:N	2.67	0.46
1:A:475:LEU:HD22	1:A:479:LEU:HG	1.97	0.46
1:A:481:ARG:HB3	1:A:484:VAL:CG2	2.46	0.46
1:B:560:PHE:CD1	1:B:560:PHE:N	2.83	0.46
1:A:19:ALA:HB1	1:A:20:PRO:CD	2.46	0.46
1:A:459:PHE:HB3	4:A:5213:HOH:O	2.15	0.46
1:B:102:GLN:HA	1:B:102:GLN:NE2	2.30	0.46
1:B:137:GLN:HG2	1:B:144:ARG:HB2	1.96	0.46
1:B:367:ASN:HD22	1:B:405:GLN:NE2	2.08	0.46
1:B:97:ASN:ND2	1:B:98:ILE:N	2.64	0.46
1:B:297:LEU:HD13	1:B:448:PHE:CE2	2.50	0.46
1:B:427:LEU:HD12	1:B:481:ARG:HD2	1.98	0.45
1:A:96:ASP:CG	1:A:309:ARG:HH21	2.19	0.45
1:A:268:ASN:ND2	1:A:592:TYR:H	2.07	0.45
1:A:581:ILE:CG2	1:A:597:LEU:HD22	2.46	0.45
1:B:291:PHE:CD1	1:B:291:PHE:N	2.83	0.45
1:B:580:TYR:CZ	1:B:603:LEU:HD12	2.51	0.45
1:A:10:ALA:N	4:A:5066:HOH:O	2.49	0.45
1:B:348:ARG:CZ	1:B:352:GLN:HE22	2.28	0.45
1:B:497:ASN:ND2	1:B:498:LYS:N	2.51	0.45
1:A:119:ILE:CD1	1:A:132:VAL:HG23	2.46	0.45
1:A:246:ASN:HD22	1:A:246:ASN:H	1.64	0.45
1:B:348:ARG:O	1:B:352:GLN:HB2	2.17	0.45
1:B:517:THR:HG22	1:B:568:GLN:HG3	1.98	0.45
1:A:56:LYS:HA	1:A:57:TRP:HA	1.65	0.45
1:A:206:GLY:O	1:A:323:GLU:HA	2.16	0.45
1:A:296:ILE:HD11	1:A:461:ALA:CA	2.46	0.45
1:A:525:LEU:HD21	1:A:567:TYR:O	2.17	0.45
1:B:127:LYS:HD2	1:B:127:LYS:N	2.32	0.45
1:A:341:GLU:CG	1:A:611:ILE:HG13	2.42	0.45
1:B:73:VAL:HG21	1:B:90:LEU:HD13	1.99	0.45
1:B:233:LEU:HD12	1:B:344:LEU:CD2	2.46	0.45
1:B:386:GLN:HG3	1:B:387:ASP:O	2.16	0.45
1:A:511:HIS:HE1	1:A:513:TYR:CD2	2.35	0.45
1:A:517:THR:HG21	1:A:566:ILE:HD13	1.98	0.45

*Continued on next page...*

*Continued from previous page...*

Atom-1	Atom-2	Interatomic distance (Å)	Clash overlap (Å)
1:A:10:ALA:HB1	1:A:14:THR:CG2	2.41	0.45
1:A:530:TYR:HA	1:A:570:LEU:N	2.32	0.45
1:B:536:ALA:H	1:B:563:GLN:NE2	2.14	0.45
1:A:350:ALA:O	1:A:352:GLN:N	2.50	0.44
1:A:389:ASP:C	1:A:391:GLU:H	2.20	0.44
1:B:481:ARG:HG2	1:B:481:ARG:HH11	1.81	0.44
1:A:122:LYS:HB2	1:A:127:LYS:O	2.18	0.44
1:A:536:ALA:CB	1:A:563:GLN:HE22	2.30	0.44
1:B:164:GLU:O	1:B:165:LEU:HD23	2.17	0.44
1:B:522:ASN:HD22	1:B:524:GLU:CD	2.20	0.44
1:A:575:LYS:HE2	1:A:580:TYR:OH	2.16	0.44
1:B:346:LEU:HA	1:B:346:LEU:HD23	1.76	0.44
1:B:246:ASN:HD21	1:B:613:PRO:CD	2.31	0.44
1:A:64:ARG:HG3	1:A:74:VAL:CG2	2.39	0.44
1:B:229:GLU:HB3	1:B:235:ASN:HD21	1.81	0.44
1:B:307:ARG:HG3	1:B:308:ARG:HG2	1.99	0.44
1:B:381:PHE:CZ	1:B:411:ARG:HB2	2.53	0.44
1:B:196:GLU:O	1:B:197:TYR:HB2	2.18	0.44
1:B:287:LEU:HD23	1:B:287:LEU:HA	1.73	0.44
1:B:56:LYS:HB3	1:B:57:TRP:CD1	2.53	0.44
1:B:112:PRO:HB3	1:B:188:TRP:CE2	2.52	0.44
1:B:379:ARG:HB2	1:B:437:CYS:CB	2.47	0.44
1:A:132:VAL:HG22	1:A:133:ALA:N	2.32	0.44
1:A:328:VAL:O	1:A:328:VAL:HG13	2.18	0.44
1:A:508:PHE:O	1:A:511:HIS:HB2	2.18	0.44
1:B:19:ALA:HB2	1:B:62:PHE:HZ	1.83	0.44
1:B:65:ARG:O	1:B:66:PHE:C	2.55	0.44
1:A:73:VAL:HG11	1:A:99:LEU:HD12	2.00	0.43
1:A:117:LEU:O	1:A:188:TRP:HA	2.17	0.43
1:A:156:PRO:O	1:A:157:GLN:C	2.56	0.43
1:A:205:ALA:O	1:A:207:GLU:N	2.51	0.43
1:B:121:ASP:HB2	1:B:186:LEU:HG	2.00	0.43
1:A:450:GLN:OE1	1:A:476:ILE:HG22	2.19	0.43
1:B:347:GLU:OE1	1:B:360:ASN:HB3	2.19	0.43
1:B:480:LEU:O	1:B:482:PRO:HD3	2.18	0.43
1:B:542:ASN:OD1	1:B:558:GLY:HA3	2.18	0.43
1:A:149:ASN:HD22	1:A:149:ASN:HA	1.57	0.43
1:A:418:GLU:HG3	1:A:430:GLY:CA	2.48	0.43
1:B:348:ARG:CZ	1:B:352:GLN:NE2	2.81	0.43
1:B:554:ASP:OD2	1:B:555:LYS:N	2.52	0.43
1:A:94:VAL:O	1:A:94:VAL:HG13	2.19	0.43

*Continued on next page...*

*Continued from previous page...*

Atom-1	Atom-2	Interatomic distance (Å)	Clash overlap (Å)
1:A:468:HIS:HE1	1:A:470:GLN:HB2	1.84	0.43
1:B:196:GLU:C	1:B:198:SER:H	2.22	0.43
1:B:384:ILE:HD11	1:B:410:THR:HG21	1.99	0.43
1:B:399:MET:HG2	1:B:439:TRP:CE2	2.54	0.43
1:A:164:GLU:C	1:A:165:LEU:HD23	2.38	0.43
1:A:499:ALA:O	1:A:502:PRO:HD2	2.19	0.43
1:B:523:ASP:C	1:B:526:VAL:HG12	2.38	0.43
1:A:227:LEU:HD23	1:A:348:ARG:HG3	2.01	0.43
1:A:298:TRP:CD1	1:A:298:TRP:N	2.85	0.43
1:B:444:TRP:CB	1:B:493:VAL:HG11	2.47	0.43
1:B:498:LYS:HD2	4:B:5081:HOH:O	2.18	0.43
1:A:123:GLY:N	1:A:127:LYS:O	2.52	0.43
1:B:151:ILE:N	1:B:151:ILE:CD1	2.80	0.43
1:B:597:LEU:HD11	1:B:614:LEU:HD13	2.01	0.43
1:A:418:GLU:CG	1:A:430:GLY:H	2.32	0.43
1:A:95:ASN:HD22	1:A:97:ASN:H	1.65	0.42
1:A:595:THR:CG2	1:A:596:CYS:N	2.81	0.42
1:B:88:ARG:HH11	1:B:88:ARG:HG2	1.84	0.42
1:A:30:TYR:HE2	1:A:58:GLN:NE2	2.17	0.42
1:A:204:ILE:HD11	1:A:208:LEU:HD13	2.01	0.42
1:B:234:GLN:O	1:B:237:TYR:HB3	2.19	0.42
1:A:88:ARG:HG3	1:A:201:GLN:HB2	2.01	0.42
1:A:118:LEU:HD12	1:A:187:GLY:O	2.19	0.42
1:A:199:LEU:HA	1:A:200:PRO:HD3	1.83	0.42
1:B:308:ARG:NE	1:B:311:HIS:ND1	2.68	0.42
1:A:428:ILE:HA	1:A:433:ARG:O	2.20	0.42
1:A:440:LYS:HE2	1:A:444:TRP:CD1	2.55	0.42
1:B:229:GLU:CB	1:B:235:ASN:ND2	2.83	0.42
1:A:430:GLY:C	1:A:432:GLY:H	2.23	0.42
1:A:48:ILE:O	1:A:49:ASP:CB	2.65	0.42
1:A:460:ALA:HB2	1:B:114:ALA:HB3	2.01	0.42
1:A:598:ARG:NH1	1:A:609:SER:O	2.53	0.42
1:B:93:VAL:HG23	1:B:94:VAL:N	2.35	0.42
1:B:138:LEU:HD11	1:B:167:MET:CE	2.49	0.42
1:B:316:ARG:NH1	3:B:965:ANP:O2G	2.52	0.42
1:A:50:ASP:HB3	1:A:310:HIS:CD2	2.54	0.42
1:A:168:VAL:HG23	1:A:168:VAL:O	2.19	0.42
1:A:233:LEU:O	1:A:236:ALA:HB3	2.20	0.42
1:A:80:MET:CG	4:A:5188:HOH:O	2.67	0.41
1:A:178:ASP:O	1:A:180:PHE:N	2.53	0.41
1:B:372:ALA:HA	4:B:5311:HOH:O	2.20	0.41

*Continued on next page...*

*Continued from previous page...*

Atom-1	Atom-2	Interatomic distance (Å)	Clash overlap (Å)
1:B:461:ALA:O	1:B:462:VAL:C	2.58	0.41
1:B:521:VAL:HG11	1:B:530:TYR:CE2	2.55	0.41
1:B:585:THR:HA	1:B:594:GLY:O	2.20	0.41
1:B:598:ARG:HD3	1:B:611:ILE:HD13	2.01	0.41
1:A:350:ALA:C	1:A:352:GLN:H	2.23	0.41
1:B:95:ASN:C	1:B:95:ASN:HD22	2.23	0.41
1:A:346:LEU:HD23	1:A:346:LEU:HA	1.88	0.41
1:A:374:LYS:HE3	1:A:374:LYS:HA	2.02	0.41
1:B:73:VAL:CG2	1:B:90:LEU:HD13	2.50	0.41
1:B:120:TRP:HB2	1:B:131:HIS:HB3	2.03	0.41
1:B:509:PRO:O	1:B:510:HIS:HB2	2.20	0.41
1:A:118:LEU:HD12	1:A:118:LEU:HA	1.90	0.41
1:B:64:ARG:NH1	1:B:75:PHE:O	2.53	0.41
1:B:512:ARG:HG2	1:B:512:ARG:HH11	1.86	0.41
1:B:547:SER:C	1:B:549:HIS:H	2.22	0.41
1:A:28:SER:HB2	1:A:57:TRP:HB2	2.03	0.41
1:B:138:LEU:HD11	1:B:167:MET:SD	2.60	0.41
1:B:139:HIS:HB2	1:B:142:LYS:HG3	2.03	0.41
1:B:386:GLN:HA	1:B:441:THR:OG1	2.21	0.41
1:B:549:HIS:C	1:B:550:GLU:HG3	2.41	0.41
1:A:366:ILE:HG12	1:A:398:PHE:CZ	2.56	0.41
1:A:96:ASP:O	1:A:276:HIS:HD2	2.03	0.41
1:A:228:ASP:HB2	1:A:348:ARG:NH2	2.36	0.41
1:B:68:PHE:CE1	1:B:93:VAL:HG21	2.42	0.41
1:A:105:PRO:HD3	1:A:199:LEU:HG	2.01	0.40
1:A:162:THR:O	1:A:163:ARG:CG	2.69	0.40
1:A:401:GLN:NE2	1:A:401:GLN:HA	2.37	0.40
1:A:581:ILE:HD12	1:A:581:ILE:N	2.36	0.40
1:B:19:ALA:HB3	1:B:23:VAL:HB	2.03	0.40
1:B:578:GLY:O	1:B:579:LYS:HG2	2.21	0.40
1:A:251:HIS:ND1	1:A:251:HIS:C	2.73	0.40
1:A:386:GLN:NE2	1:A:414:ARG:HD2	2.35	0.40
1:A:411:ARG:HH21	1:A:431:GLU:HG3	1.86	0.40
1:B:339:HIS:HB3	1:B:398:PHE:CE2	2.56	0.40
1:B:498:LYS:C	1:B:500:ILE:N	2.74	0.40
1:A:327:LYS:HG3	1:A:515:LEU:HD21	2.04	0.40
1:A:512:ARG:NH1	1:A:512:ARG:HB3	2.36	0.40
1:B:228:ASP:HB3	1:B:234:GLN:NE2	2.36	0.40
1:B:468:HIS:HE1	1:B:470:GLN:HE21	1.68	0.40
1:B:517:THR:HB	1:B:568:GLN:CA	2.48	0.40
1:A:237:TYR:HA	1:A:394:TYR:CD2	2.56	0.40

*Continued on next page...*

Continued from previous page...

Atom-1	Atom-2	Interatomic distance (Å)	Clash overlap (Å)
1:A:383:HIS:CE1	1:A:433:ARG:HD2	2.56	0.40
1:A:505:TRP:CH2	1:A:510:HIS:HA	2.57	0.40
1:B:50:ASP:OD2	1:B:50:ASP:N	2.54	0.40
1:B:417:ASP:HB2	4:B:5324:HOH:O	2.21	0.40

There are no symmetry-related clashes.

## 5.3 Torsion angles [i](#)

### 5.3.1 Protein backbone [i](#)

In the following table, the Percentiles column shows the percent Ramachandran outliers of the chain as a percentile score with respect to all X-ray entries followed by that with respect to entries of similar resolution.

The Analysed column shows the number of residues for which the backbone conformation was analysed, and the total number of residues.

Mol	Chain	Analysed	Favoured	Allowed	Outliers	Percentiles	
1	A	581/619 (94%)	513 (88%)	58 (10%)	10 (2%)	9	23
1	B	581/619 (94%)	521 (90%)	48 (8%)	12 (2%)	7	18
All	All	1162/1238 (94%)	1034 (89%)	106 (9%)	22 (2%)	8	20

All (22) Ramachandran outliers are listed below:

Mol	Chain	Res	Type
1	A	127	LYS
1	B	461	ALA
1	B	571	TRP
1	A	11	PRO
1	A	206	GLY
1	B	96	ASP
1	B	452	ARG
1	A	49	ASP
1	A	76	THR
1	A	95	ASN
1	B	49	ASP
1	B	338	CYS
1	A	431	GLU
1	B	127	LYS

Continued on next page...

*Continued from previous page...*

Mol	Chain	Res	Type
1	B	295	LYS
1	B	377	ARG
1	B	551	GLU
1	A	179	THR
1	A	571	TRP
1	B	550	GLU
1	A	296	ILE
1	B	482	PRO

### 5.3.2 Protein sidechains [i](#)

In the following table, the Percentiles column shows the percent sidechain outliers of the chain as a percentile score with respect to all X-ray entries followed by that with respect to entries of similar resolution.

The Analysed column shows the number of residues for which the sidechain conformation was analysed, and the total number of residues.

Mol	Chain	Analysed	Rotameric	Outliers	Percentiles	
1	A	500/530 (94%)	471 (94%)	29 (6%)	20	43
1	B	500/530 (94%)	467 (93%)	33 (7%)	16	38
All	All	1000/1060 (94%)	938 (94%)	62 (6%)	18	40

All (62) residues with a non-rotameric sidechain are listed below:

Mol	Chain	Res	Type
1	A	94	VAL
1	A	95	ASN
1	A	120	TRP
1	A	149	ASN
1	A	177	LYS
1	A	244	VAL
1	A	246	ASN
1	A	258	SER
1	A	272	LEU
1	A	280	LYS
1	A	323	GLU
1	A	348	ARG
1	A	355	LYS
1	A	419	LEU
1	A	433	ARG

*Continued on next page...*

*Continued from previous page...*

<b>Mol</b>	<b>Chain</b>	<b>Res</b>	<b>Type</b>
1	A	441	THR
1	A	459	PHE
1	A	470	GLN
1	A	471	ASN
1	A	475	LEU
1	A	486	VAL
1	A	497	ASN
1	A	504	LEU
1	A	544	ASP
1	A	554	ASP
1	A	557	SER
1	A	559	LYS
1	A	587	THR
1	A	608	GLU
1	B	14	THR
1	B	50	ASP
1	B	95	ASN
1	B	97	ASN
1	B	143	VAL
1	B	153	SER
1	B	173	CYS
1	B	204	ILE
1	B	215	ARG
1	B	219	LYS
1	B	233	LEU
1	B	258	SER
1	B	309	ARG
1	B	328	VAL
1	B	348	ARG
1	B	352	GLN
1	B	368	GLU
1	B	369	LEU
1	B	377	ARG
1	B	379	ARG
1	B	382	VAL
1	B	390	ILE
1	B	411	ARG
1	B	417	ASP
1	B	470	GLN
1	B	471	ASN
1	B	475	LEU
1	B	476	ILE

*Continued on next page...*

*Continued from previous page...*

Mol	Chain	Res	Type
1	B	497	ASN
1	B	517	THR
1	B	560	PHE
1	B	608	GLU
1	B	618	LYS

Sometimes sidechains can be flipped to improve hydrogen bonding and reduce clashes. All (39) such sidechains are listed below:

Mol	Chain	Res	Type
1	A	55	HIS
1	A	70	ASN
1	A	95	ASN
1	A	149	ASN
1	A	159	GLN
1	A	201	GLN
1	A	246	ASN
1	A	261	GLN
1	A	268	ASN
1	A	276	HIS
1	A	310	HIS
1	A	311	HIS
1	A	339	HIS
1	A	352	GLN
1	A	397	GLN
1	A	401	GLN
1	A	405	GLN
1	A	471	ASN
1	A	497	ASN
1	A	563	GLN
1	A	582	GLN
1	B	70	ASN
1	B	95	ASN
1	B	97	ASN
1	B	102	GLN
1	B	131	HIS
1	B	159	GLN
1	B	171	ASN
1	B	235	ASN
1	B	246	ASN
1	B	261	GLN
1	B	268	ASN
1	B	286	ASN

*Continued on next page...*



*Continued from previous page...*

Mol	Chain	Res	Type
1	B	339	HIS
1	B	367	ASN
1	B	397	GLN
1	B	470	GLN
1	B	497	ASN
1	B	563	GLN

### 5.3.3 RNA [i](#)

There are no RNA molecules in this entry.

### 5.4 Non-standard residues in protein, DNA, RNA chains [i](#)

There are no non-standard protein/DNA/RNA residues in this entry.

### 5.5 Carbohydrates [i](#)

There are no monosaccharides in this entry.

### 5.6 Ligand geometry [i](#)

Of 6 ligands modelled in this entry, 4 are monoatomic - leaving 2 for Mogul analysis.

In the following table, the Counts columns list the number of bonds (or angles) for which Mogul statistics could be retrieved, the number of bonds (or angles) that are observed in the model and the number of bonds (or angles) that are defined in the Chemical Component Dictionary. The Link column lists molecule types, if any, to which the group is linked. The Z score for a bond length (or angle) is the number of standard deviations the observed value is removed from the expected value. A bond length (or angle) with  $|Z| > 2$  is considered an outlier worth inspection. RMSZ is the root-mean-square of all Z scores of the bond lengths (or angles).

Mol	Type	Chain	Res	Link	Bond lengths			Bond angles		
					Counts	RMSZ	# Z  > 2	Counts	RMSZ	# Z  > 2
3	ANP	A	964	2	29,33,33	3.87	6 (20%)	31,52,52	1.95	10 (32%)
3	ANP	B	965	2	29,33,33	3.80	4 (13%)	31,52,52	2.07	12 (38%)

In the following table, the Chirals column lists the number of chiral outliers, the number of chiral centers analysed, the number of these observed in the model and the number defined in the Chemical Component Dictionary. Similar counts are reported in the Torsion and Rings columns. '-' means no outliers of that kind were identified.

Mol	Type	Chain	Res	Link	Chirals	Torsions	Rings
3	ANP	A	964	2	-	6/14/38/38	0/3/3/3
3	ANP	B	965	2	-	6/14/38/38	0/3/3/3

All (10) bond length outliers are listed below:

Mol	Chain	Res	Type	Atoms	Z	Observed(Å)	Ideal(Å)
3	B	965	ANP	PB-O3A	18.86	1.82	1.59
3	A	964	ANP	PB-O3A	18.75	1.82	1.59
3	A	964	ANP	C2-N1	5.21	1.43	1.33
3	B	965	ANP	C2-N1	5.05	1.43	1.33
3	A	964	ANP	C2-N3	4.17	1.38	1.32
3	B	965	ANP	C2-N3	3.61	1.37	1.32
3	A	964	ANP	PG-N3B	-3.01	1.55	1.63
3	A	964	ANP	C4-N3	2.74	1.39	1.35
3	B	965	ANP	PB-O1B	2.24	1.49	1.46
3	A	964	ANP	C6-C5	2.07	1.51	1.43

All (22) bond angle outliers are listed below:

Mol	Chain	Res	Type	Atoms	Z	Observed(°)	Ideal(°)
3	B	965	ANP	O2G-PG-O1G	-6.20	97.88	113.45
3	A	964	ANP	O2G-PG-O1G	-5.67	99.19	113.45
3	A	964	ANP	C5-C6-N6	3.74	126.03	120.35
3	B	965	ANP	N3-C2-N1	-3.64	122.99	128.68
3	A	964	ANP	N3-C2-N1	-3.53	123.17	128.68
3	B	965	ANP	C5-C6-N6	3.49	125.66	120.35
3	B	965	ANP	O2G-PG-O3G	3.08	115.83	107.64
3	B	965	ANP	C3'-C2'-C1'	2.93	105.38	100.98
3	B	965	ANP	C5-C6-N1	-2.88	113.81	120.35
3	A	964	ANP	C5-C6-N1	-2.84	113.91	120.35
3	A	964	ANP	C2-N1-C6	2.61	123.22	118.75
3	A	964	ANP	C3'-C2'-C1'	2.55	104.82	100.98
3	A	964	ANP	O2B-PB-O1B	2.49	115.14	109.92
3	B	965	ANP	C2-N1-C6	2.42	122.89	118.75
3	B	965	ANP	O2B-PB-O1B	2.35	114.86	109.92
3	A	964	ANP	O2G-PG-O3G	2.34	113.86	107.64
3	A	964	ANP	O4'-C1'-C2'	-2.19	103.72	106.93
3	B	965	ANP	O4'-C1'-C2'	-2.13	103.82	106.93
3	B	965	ANP	O1G-PG-N3B	2.12	114.89	111.77
3	B	965	ANP	O1B-PB-N3B	2.11	114.88	111.77
3	B	965	ANP	O3'-C3'-C2'	2.08	118.54	111.82
3	A	964	ANP	O3'-C3'-C2'	2.04	118.42	111.82

There are no chirality outliers.

All (12) torsion outliers are listed below:

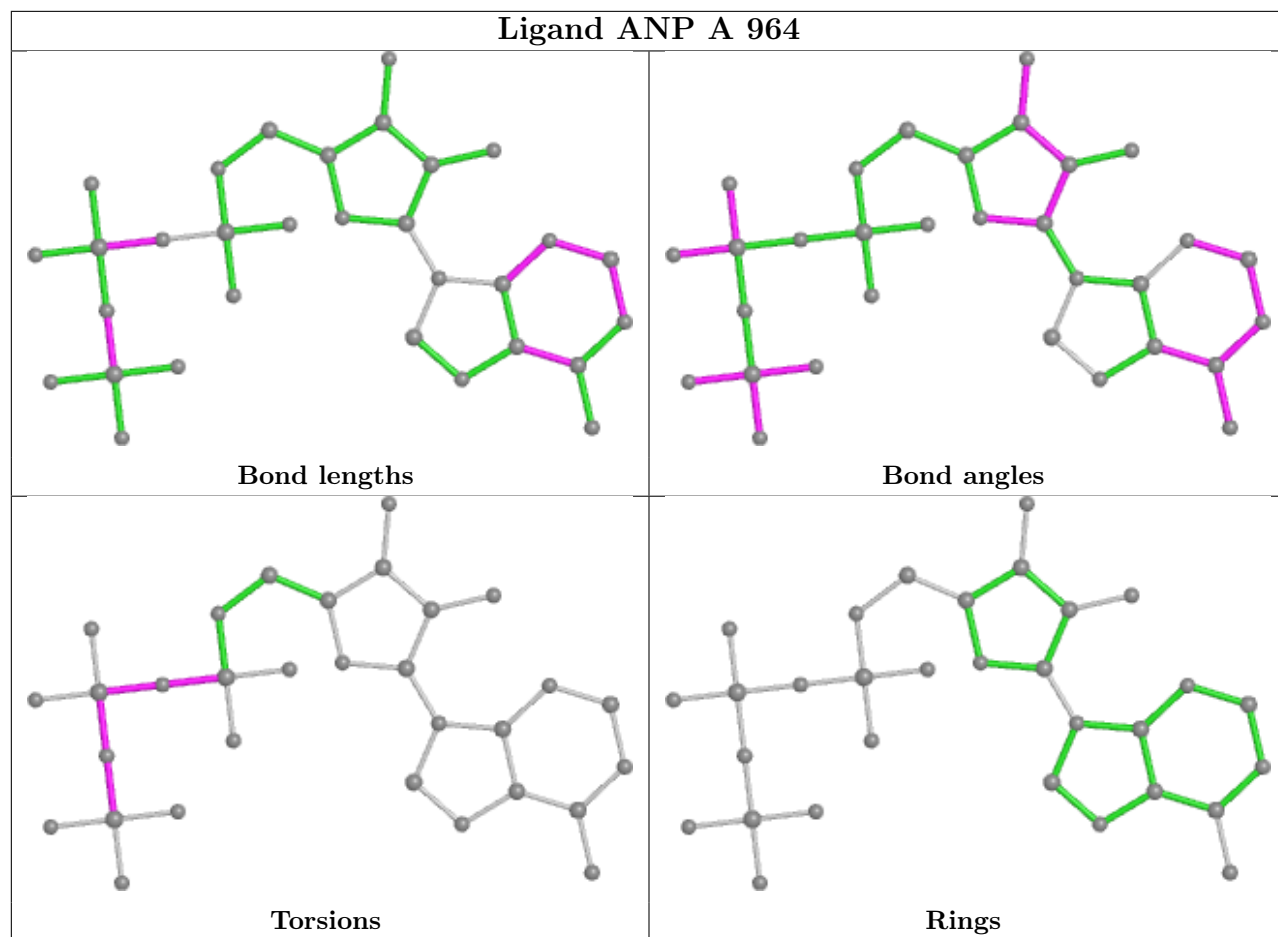
Mol	Chain	Res	Type	Atoms
3	A	964	ANP	PB-N3B-PG-O1G
3	A	964	ANP	PG-N3B-PB-O1B
3	A	964	ANP	PG-N3B-PB-O3A
3	A	964	ANP	PA-O3A-PB-O1B
3	A	964	ANP	PA-O3A-PB-O2B
3	B	965	ANP	PB-N3B-PG-O1G
3	B	965	ANP	PG-N3B-PB-O1B
3	B	965	ANP	PG-N3B-PB-O3A
3	B	965	ANP	PA-O3A-PB-O1B
3	B	965	ANP	PA-O3A-PB-O2B
3	A	964	ANP	PB-O3A-PA-O2A
3	B	965	ANP	PB-O3A-PA-O2A

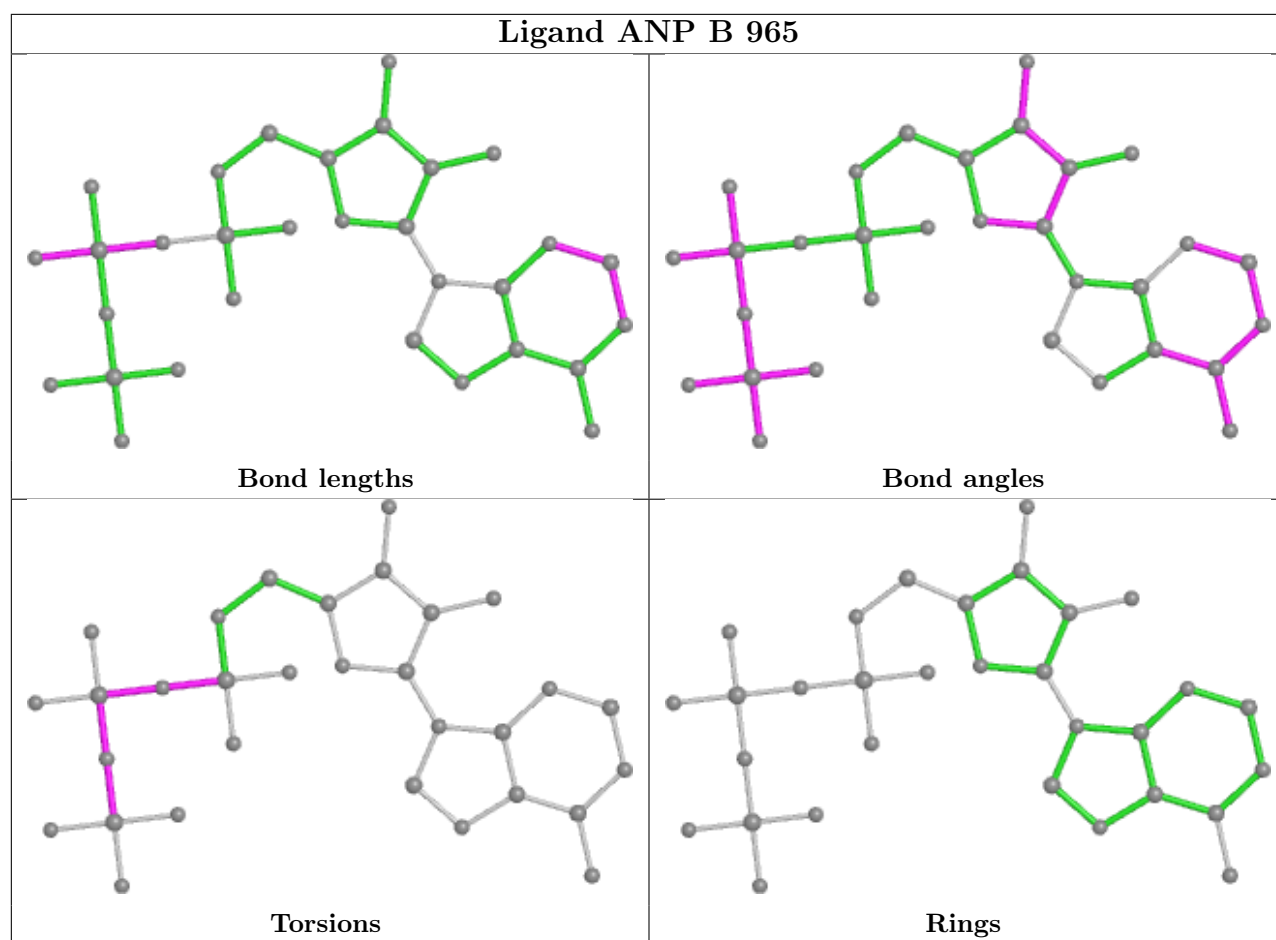
There are no ring outliers.

2 monomers are involved in 5 short contacts:

Mol	Chain	Res	Type	Clashes	Symm-Clashes
3	A	964	ANP	1	0
3	B	965	ANP	4	0

The following is a two-dimensional graphical depiction of Mogul quality analysis of bond lengths, bond angles, torsion angles, and ring geometry for all instances of the Ligand of Interest. In addition, ligands with molecular weight > 250 and outliers as shown on the validation Tables will also be included. For torsion angles, if less than 5% of the Mogul distribution of torsion angles is within 10 degrees of the torsion angle in question, then that torsion angle is considered an outlier. Any bond that is central to one or more torsion angles identified as an outlier by Mogul will be highlighted in the graph. For rings, the root-mean-square deviation (RMSD) between the ring in question and similar rings identified by Mogul is calculated over all ring torsion angles. If the average RMSD is greater than 60 degrees and the minimal RMSD between the ring in question and any Mogul-identified rings is also greater than 60 degrees, then that ring is considered an outlier. The outliers are highlighted in purple. The color gray indicates Mogul did not find sufficient equivalents in the CSD to analyse the geometry.





## 5.7 Other polymers [i](#)

There are no such residues in this entry.

## 5.8 Polymer linkage issues [i](#)

There are no chain breaks in this entry.

## 6 Fit of model and data [i](#)

### 6.1 Protein, DNA and RNA chains [i](#)

In the following table, the column labelled ‘#RSRZ > 2’ contains the number (and percentage) of RSRZ outliers, followed by percent RSRZ outliers for the chain as percentile scores relative to all X-ray entries and entries of similar resolution. The OWAB column contains the minimum, median, 95<sup>th</sup> percentile and maximum values of the occupancy-weighted average B-factor per residue. The column labelled ‘Q < 0.9’ lists the number of (and percentage) of residues with an average occupancy less than 0.9.

Mol	Chain	Analysed	<RSRZ>	#RSRZ>2	OWAB(Å <sup>2</sup> )	Q<0.9
1	A	587/619 (94%)	-0.31	4 (0%) 87 89	1, 16, 38, 63	0
1	B	587/619 (94%)	-0.24	14 (2%) 59 60	1, 17, 39, 59	0
All	All	1174/1238 (94%)	-0.28	18 (1%) 73 76	1, 17, 38, 63	0

All (18) RSRZ outliers are listed below:

Mol	Chain	Res	Type	RSRZ
1	B	43	VAL	4.4
1	A	172	GLY	3.9
1	B	44	PHE	3.7
1	B	171	ASN	3.6
1	B	424	ALA	3.5
1	A	30	TYR	3.5
1	A	127	LYS	3.3
1	A	423	ALA	3.1
1	B	141	ASN	2.8
1	B	527	LYS	2.7
1	B	42	ALA	2.4
1	B	548	HIS	2.2
1	B	549	HIS	2.2
1	B	127	LYS	2.1
1	B	172	GLY	2.1
1	B	223	ASP	2.1
1	B	460	ALA	2.1
1	B	140	GLY	2.0

### 6.2 Non-standard residues in protein, DNA, RNA chains [i](#)

There are no non-standard protein/DNA/RNA residues in this entry.

### 6.3 Carbohydrates [i](#)

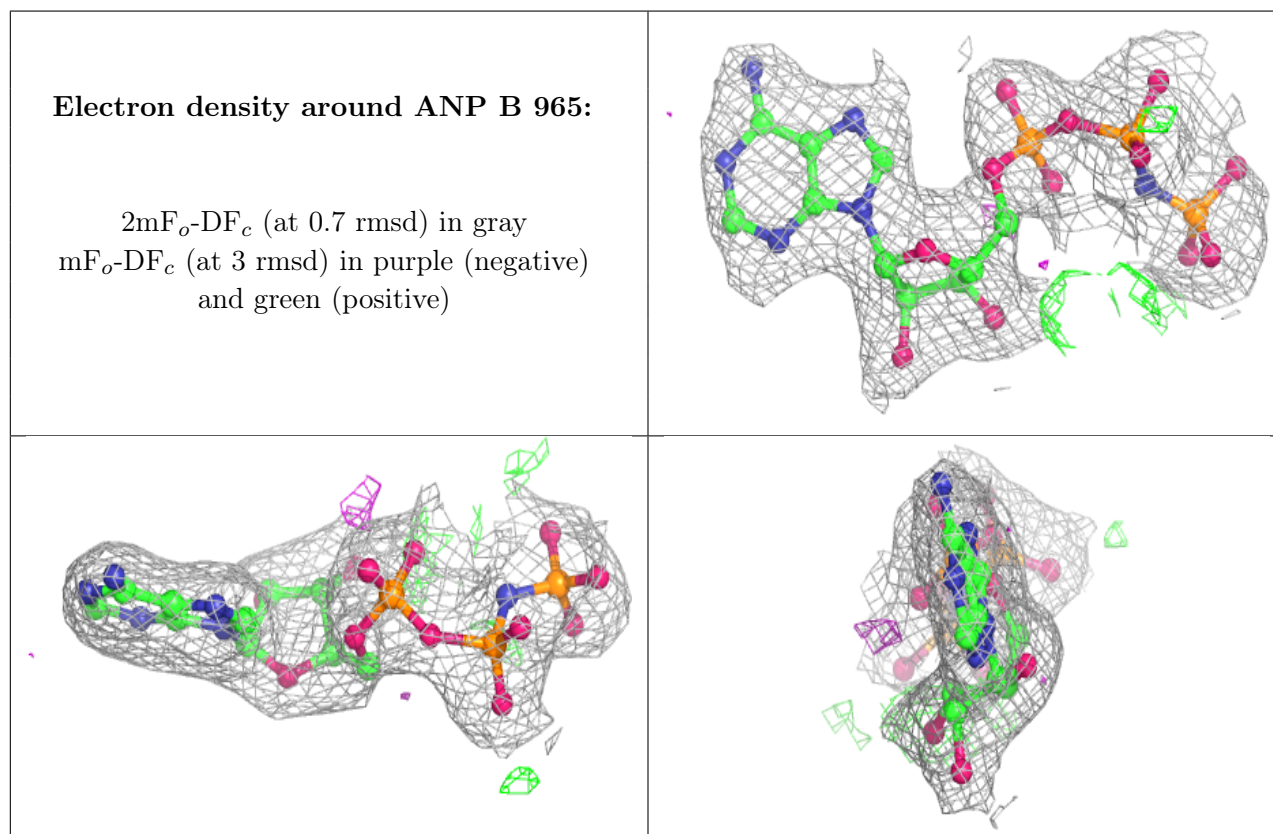
There are no monosaccharides in this entry.

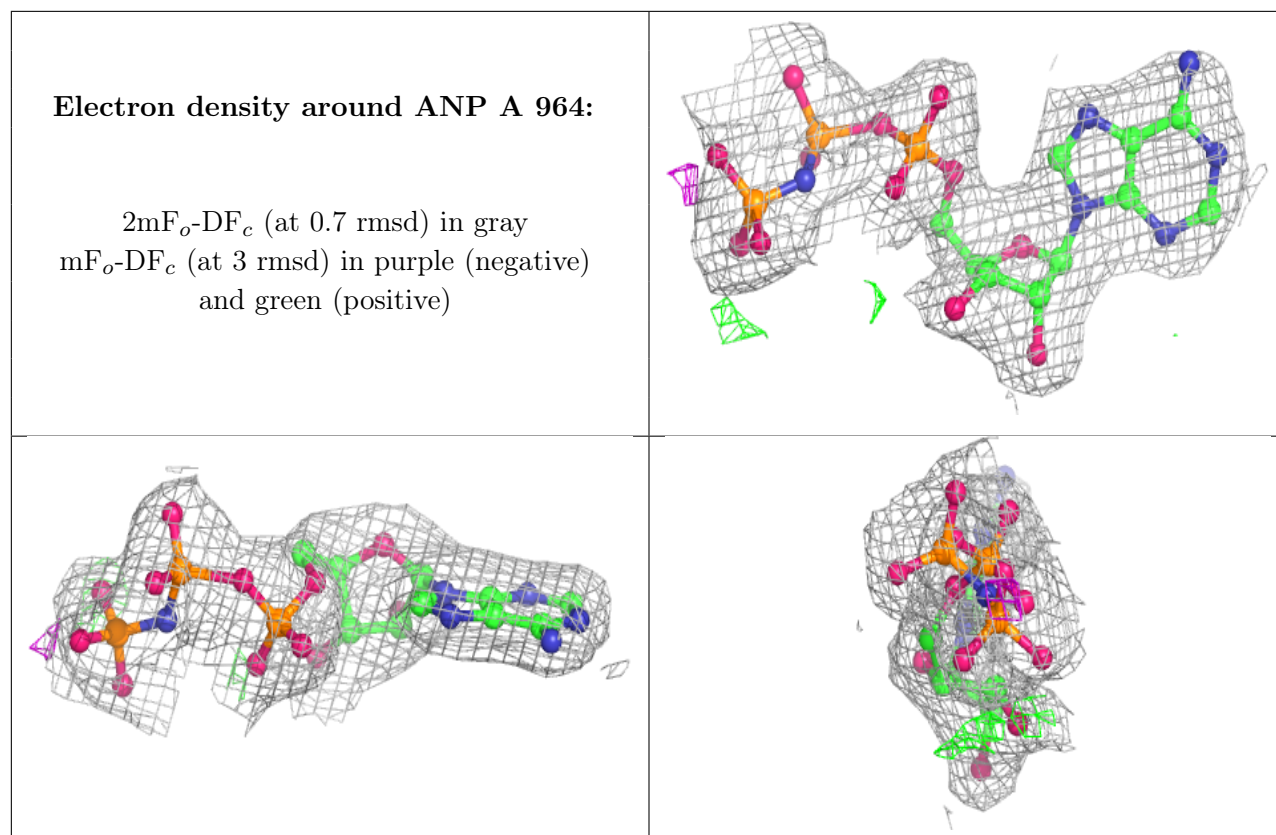
### 6.4 Ligands [i](#)

In the following table, the Atoms column lists the number of modelled atoms in the group and the number defined in the chemical component dictionary. The B-factors column lists the minimum, median, 95<sup>th</sup> percentile and maximum values of B factors of atoms in the group. The column labelled 'Q< 0.9' lists the number of atoms with occupancy less than 0.9.

Mol	Type	Chain	Res	Atoms	RSCC	RSR	B-factors( $\text{\AA}^2$ )	Q<0.9
2	MG	A	5002	1/1	0.95	0.06	1,1,1,1	0
2	MG	A	5001	1/1	0.96	0.13	1,1,1,1	0
2	MG	B	5003	1/1	0.96	0.18	1,1,1,1	0
3	ANP	B	965	31/31	0.97	0.13	7,13,15,16	0
3	ANP	A	964	31/31	0.98	0.13	3,8,14,15	0
2	MG	B	5004	1/1	0.98	0.08	1,1,1,1	0

The following is a graphical depiction of the model fit to experimental electron density of all instances of the Ligand of Interest. In addition, ligands with molecular weight > 250 and outliers as shown on the geometry validation Tables will also be included. Each fit is shown from different orientation to approximate a three-dimensional view.





## 6.5 Other polymers [i](#)

There are no such residues in this entry.