



Full wwPDB EM Validation Report ⓘ

Nov 1, 2022 – 06:01 PM EDT

PDB ID : 5IRE
EMDB ID : EMD-8116
Title : The cryo-EM structure of Zika Virus
Authors : Sirohi, D.; Chen, Z.; Sun, L.; Klose, T.; Pierson, T.; Rossmann, M.; Kuhn, R.
Deposited on : 2016-03-13
Resolution : 3.80 Å (reported)

This is a Full wwPDB EM Validation Report for a publicly released PDB entry.

We welcome your comments at validation@mail.wwpdb.org

A user guide is available at

<https://www.wwpdb.org/validation/2017/EMValidationReportHelp>

with specific help available everywhere you see the ⓘ symbol.

The types of validation reports are described at

<http://www.wwpdb.org/validation/2017/FAQs#types>.

The following versions of software and data (see [references ⓘ](#)) were used in the production of this report:

EMDB validation analysis : 0.0.1.dev43
Mogul : 1.8.5 (274361), CSD as541be (2020)
MolProbity : 4.02b-467
Percentile statistics : 20191225.v01 (using entries in the PDB archive December 25th 2019)
MapQ : 1.9.9
Ideal geometry (proteins) : Engh & Huber (2001)
Ideal geometry (DNA, RNA) : Parkinson et al. (1996)
Validation Pipeline (wwPDB-VP) : 2.31.2

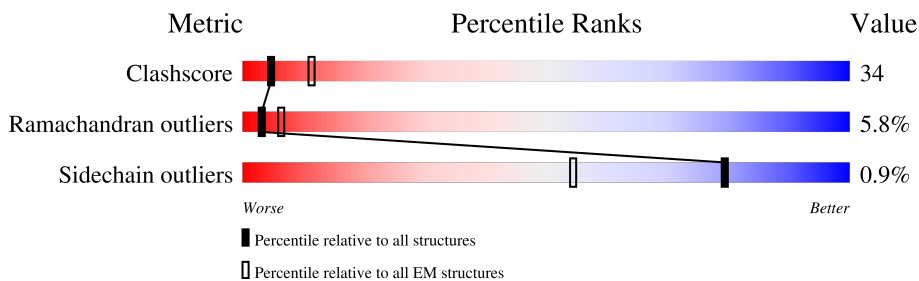
1 Overall quality at a glance

The following experimental techniques were used to determine the structure:

ELECTRON MICROSCOPY

The reported resolution of this entry is 3.80 Å.

Percentile scores (ranging between 0-100) for global validation metrics of the entry are shown in the following graphic. The table shows the number of entries on which the scores are based.




Metric	Whole archive (#Entries)	EM structures (#Entries)
Clashscore	158937	4297
Ramachandran outliers	154571	4023
Sidechain outliers	154315	3826

The table below summarises the geometric issues observed across the polymeric chains and their fit to the map. The red, orange, yellow and green segments of the bar indicate the fraction of residues that contain outliers for ≥ 3 , 2, 1 and 0 types of geometric quality criteria respectively. A grey segment represents the fraction of residues that are not modelled. The numeric value for each fraction is indicated below the corresponding segment, with a dot representing fractions $\leq 5\%$. The upper red bar (where present) indicates the fraction of residues that have poor fit to the EM map (all-atom inclusion $< 40\%$). The numeric value is given above the bar.

Mol	Chain	Length	Quality of chain
1	A	504	 66% 28% 5% 8%
1	C	504	 62% 32% 6% 5%
1	E	504	 67% 27% 5% 8%
2	B	75	 80% 19% 5%
2	D	75	 73% 24% 5%
2	F	75	 73% 23% 5%
3	G	2	 50% 50%
3	H	2	 100%

Continued on next page...

Continued from previous page...

Mol	Chain	Length	Quality of chain
3	I	2	

The following table lists non-polymeric compounds, carbohydrate monomers and non-standard residues in protein, DNA, RNA chains that are outliers for geometric or electron-density-fit criteria:

Mol	Type	Chain	Res	Chirality	Geometry	Clashes	Electron density
3	NAG	H	1	-	-	X	-

2 Entry composition [i](#)

There are 3 unique types of molecules in this entry. The entry contains 11024 atoms, of which 0 are hydrogens and 0 are deuteriums.

In the tables below, the AltConf column contains the number of residues with at least one atom in alternate conformation and the Trace column contains the number of residues modelled with at most 2 atoms.

- Molecule 1 is a protein called E protein.

Mol	Chain	Residues	Atoms					AltConf	Trace
			Total	C	N	O	S		
1	A	501	Total 3167	C 1993	N 576	O 582	S 16	0	0
1	C	501	Total 3225	C 2035	N 589	O 586	S 15	0	0
1	E	501	Total 3186	C 2003	N 581	O 585	S 17	0	0

- Molecule 2 is a protein called M protein.

Mol	Chain	Residues	Atoms				AltConf	Trace
			Total	C	N	O		
2	B	75	Total 456	C 285	N 85	O 86	0	0
2	D	75	Total 456	C 285	N 85	O 86	0	0
2	F	75	Total 450	C 282	N 82	O 86	0	0

- Molecule 3 is an oligosaccharide called 2-acetamido-2-deoxy-beta-D-glucopyranose-(1-4)-2-acetamido-2-deoxy-beta-D-glucopyranose.

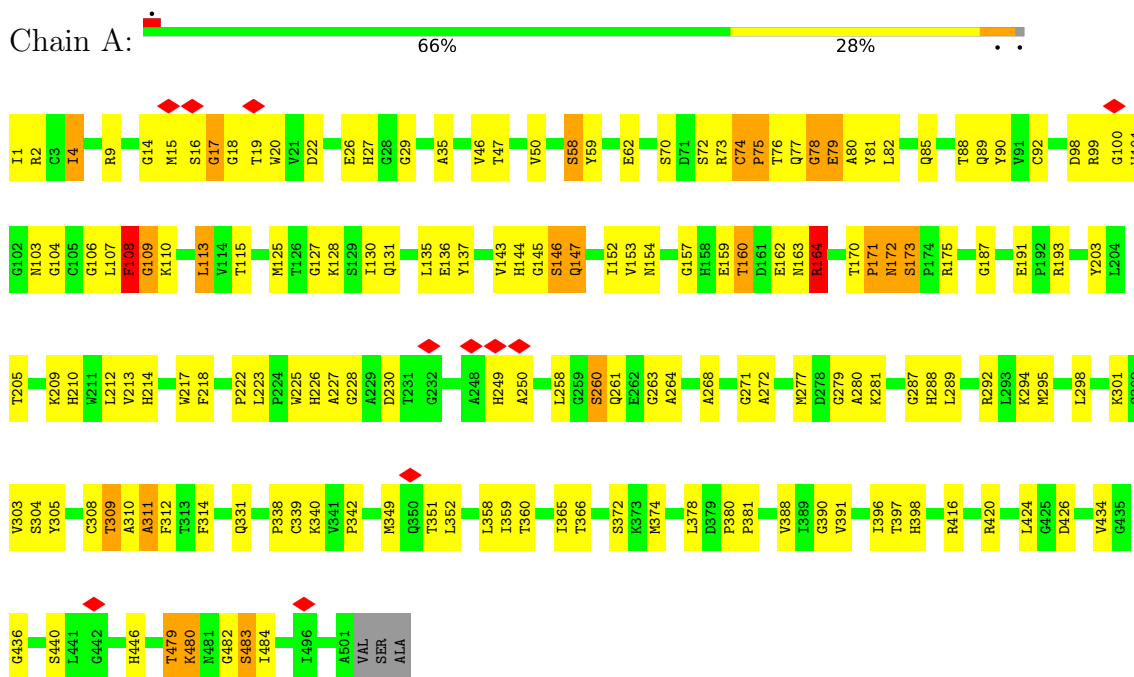


Mol	Chain	Residues	Atoms				AltConf	Trace
			Total	C	N	O		
3	G	2	Total 28	C 16	N 2	O 10	0	0
3	H	2	Total 28	C 16	N 2	O 10	0	0
3	I	2	Total 28	C 16	N 2	O 10	0	0

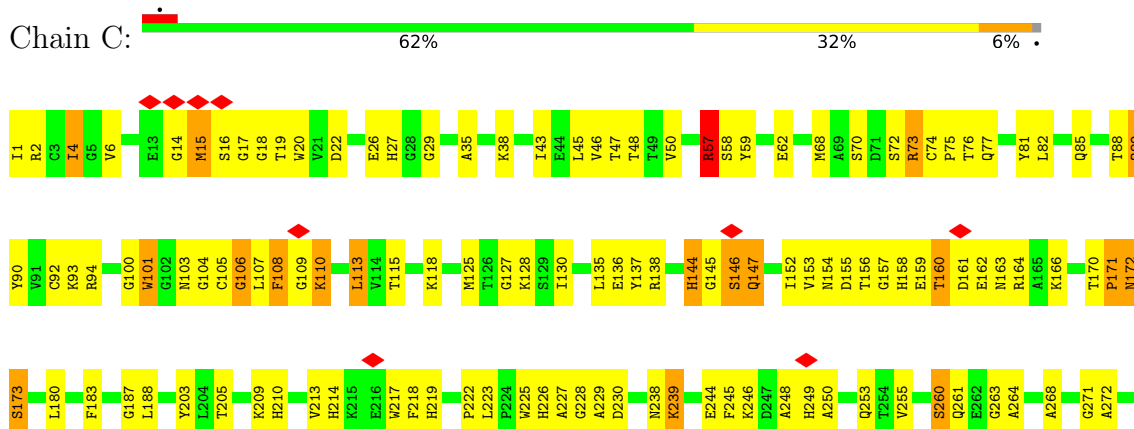
3 Residue-property plots

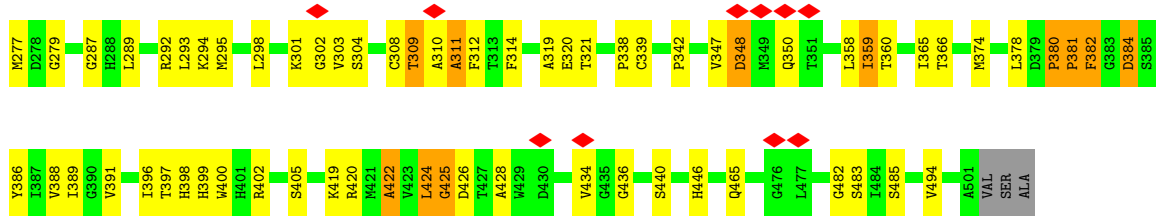
These plots are drawn for all protein, RNA, DNA and oligosaccharide chains in the entry. The first graphic for a chain summarises the proportions of the various outlier classes displayed in the second graphic. The second graphic shows the sequence view annotated by issues in geometry and atom inclusion in map density. Residues are color-coded according to the number of geometric quality criteria for which they contain at least one outlier: green = 0, yellow = 1, orange = 2 and red = 3 or more. A red diamond above a residue indicates a poor fit to the EM map for this residue (all-atom inclusion < 40%). Stretches of 2 or more consecutive residues without any outlier are shown as a green connector. Residues present in the sample, but not in the model, are shown in grey.

- Molecule 1: E protein

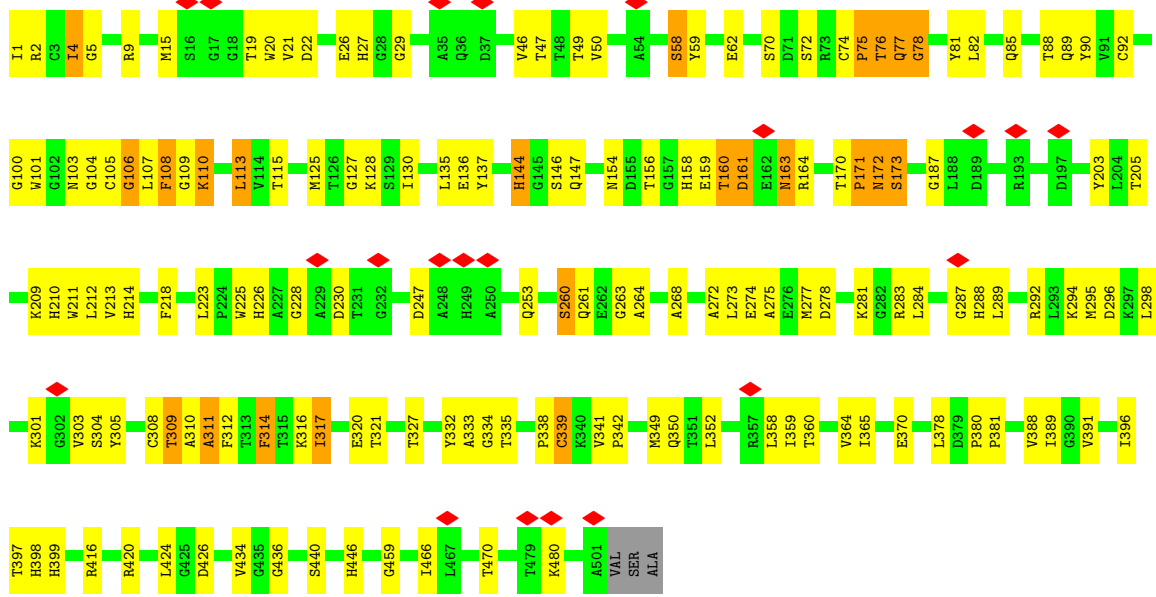


- Molecule 1: E protein

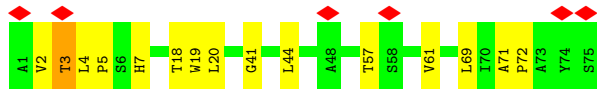
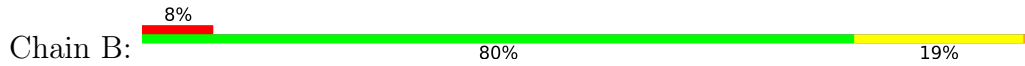




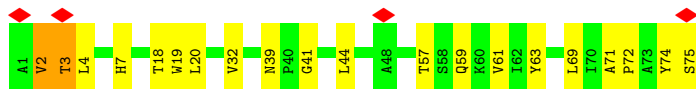
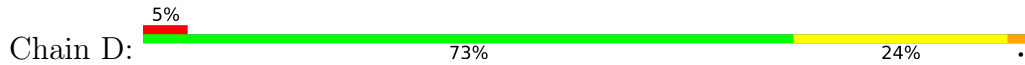
• Molecule 1: E protein



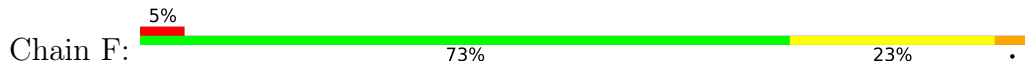
• Molecule 2: M protein

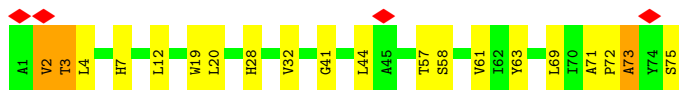


• Molecule 2: M protein



• Molecule 2: M protein





- Molecule 3: 2-acetamido-2-deoxy-beta-D-glucopyranose-(1-4)-2-acetamido-2-deoxy-beta-D-glucopyranose



- Molecule 3: 2-acetamido-2-deoxy-beta-D-glucopyranose-(1-4)-2-acetamido-2-deoxy-beta-D-glucopyranose



- Molecule 3: 2-acetamido-2-deoxy-beta-D-glucopyranose-(1-4)-2-acetamido-2-deoxy-beta-D-glucopyranose



4 Experimental information

Property	Value	Source
EM reconstruction method	SINGLE PARTICLE	Depositor
Imposed symmetry	POINT, I	Depositor
Number of particles used	11842	Depositor
Resolution determination method	FSC 0.143 CUT-OFF	Depositor
CTF correction method	PHASE FLIPPING ONLY; Phase flipping was performed during 3D reconstruction.	Depositor
Microscope	FEI TITAN KRIOS	Depositor
Voltage (kV)	300	Depositor
Electron dose ($e^-/\text{\AA}^2$)	23	Depositor
Minimum defocus (nm)	1000	Depositor
Maximum defocus (nm)	2500	Depositor
Magnification	14000	Depositor
Image detector	GATAN K2 SUMMIT (4k x 4k)	Depositor
Maximum map value	26.264	Depositor
Minimum map value	-19.308	Depositor
Average map value	0.027	Depositor
Map value standard deviation	1.129	Depositor
Recommended contour level	3.5	Depositor
Map size (\AA)	798.72, 798.72, 798.72	wwPDB
Map dimensions	768, 768, 768	wwPDB
Map angles ($^\circ$)	90.0, 90.0, 90.0	wwPDB
Pixel spacing (\AA)	1.04, 1.04, 1.04	Depositor

5 Model quality [i](#)

5.1 Standard geometry [i](#)

Bond lengths and bond angles in the following residue types are not validated in this section: NAG

The Z score for a bond length (or angle) is the number of standard deviations the observed value is removed from the expected value. A bond length (or angle) with $|Z| > 5$ is considered an outlier worth inspection. RMSZ is the root-mean-square of all Z scores of the bond lengths (or angles).

Mol	Chain	Bond lengths		Bond angles	
		RMSZ	# Z >5	RMSZ	# Z >5
1	A	0.56	2/3228 (0.1%)	0.64	3/4439 (0.1%)
1	C	0.60	2/3289 (0.1%)	0.62	3/4514 (0.1%)
1	E	0.53	0/3247	0.60	1/4460 (0.0%)
2	B	0.41	0/466	0.48	0/650
2	D	0.47	0/466	0.54	1/650 (0.2%)
2	F	0.42	0/460	0.48	0/643
All	All	0.55	4/11156 (0.0%)	0.60	8/15356 (0.1%)

Chiral center outliers are detected by calculating the chiral volume of a chiral center and verifying if the center is modelled as a planar moiety or with the opposite hand. A planarity outlier is detected by checking planarity of atoms in a peptide group, atoms in a mainchain group or atoms of a sidechain that are expected to be planar.

Mol	Chain	#Chirality outliers	#Planarity outliers
1	A	0	1
1	C	0	1
1	E	0	1
All	All	0	3

All (4) bond length outliers are listed below:

Mol	Chain	Res	Type	Atoms	Z	Observed(Å)	Ideal(Å)
1	C	73	ARG	NE-CZ	-7.87	1.22	1.33
1	C	73	ARG	CZ-NH1	-7.82	1.22	1.33
1	A	164	ARG	CZ-NH1	-7.61	1.23	1.33
1	A	164	ARG	NE-CZ	-7.48	1.23	1.33

All (8) bond angle outliers are listed below:

Mol	Chain	Res	Type	Atoms	Z	Observed(°)	Ideal(°)
1	A	74	CYS	C-N-CD	-13.49	90.92	120.60
1	C	73	ARG	NE-CZ-NH1	-5.56	117.52	120.30
1	A	113	LEU	CA-CB-CG	5.36	127.64	115.30
1	C	113	LEU	CA-CB-CG	5.35	127.61	115.30
1	E	113	LEU	CA-CB-CG	5.25	127.37	115.30
1	A	164	ARG	NE-CZ-NH1	-5.18	117.71	120.30
1	C	380	PRO	C-N-CD	5.09	139.08	128.40
2	D	71	ALA	C-N-CD	5.06	139.03	128.40

There are no chirality outliers.

All (3) planarity outliers are listed below:

Mol	Chain	Res	Type	Group
1	A	359	ILE	Peptide
1	C	359	ILE	Peptide
1	E	359	ILE	Peptide

5.2 Too-close contacts [i](#)

In the following table, the Non-H and H(model) columns list the number of non-hydrogen atoms and hydrogen atoms in the chain respectively. The H(added) column lists the number of hydrogen atoms added and optimized by MolProbity. The Clashes column lists the number of clashes within the asymmetric unit, whereas Symm-Clashes lists symmetry-related clashes.

Mol	Chain	Non-H	H(model)	H(added)	Clashes	Symm-Clashes
1	A	3167	0	2593	176	0
1	C	3225	0	2708	307	0
1	E	3186	0	2621	223	0
2	B	456	0	329	16	0
2	D	456	0	329	24	0
2	F	450	0	318	24	0
3	G	28	0	25	1	0
3	H	28	0	25	9	0
3	I	28	0	24	1	0
All	All	11024	0	8972	677	0

The all-atom clashscore is defined as the number of clashes found per 1000 atoms (including hydrogen atoms). The all-atom clashscore for this structure is 34.

All (677) close contacts within the same asymmetric unit are listed below, sorted by their clash magnitude.

Atom-1	Atom-2	Interatomic distance (Å)	Clash overlap (Å)
1:C:138:ARG:HD3	1:C:166:LYS:CE	1.23	1.61
1:C:382:PHE:CE2	1:C:405:SER:HA	1.41	1.56
1:A:222:PRO:HG3	2:B:3:THR:CB	1.38	1.53
1:C:27:HIS:CE1	1:C:45:LEU:HD21	1.44	1.52
1:C:465:GLN:HE21	1:C:494:VAL:CG1	1.26	1.49
1:A:100:GLY:HA2	1:A:108:PHE:CB	1.43	1.47
1:C:101:TRP:CH2	1:E:327:THR:OG1	1.67	1.46
1:A:222:PRO:CG	2:B:3:THR:CB	1.91	1.45
1:E:1:ILE:HG12	1:E:147:GLN:NE2	1.21	1.44
1:E:308:CYS:CA	1:E:339:CYS:SG	2.05	1.44
1:C:138:ARG:HD3	1:C:166:LYS:NZ	1.28	1.43
1:C:320:GLU:O	1:E:108:PHE:CE1	1.67	1.42
1:C:465:GLN:NE2	1:C:494:VAL:HG13	1.36	1.39
1:C:27:HIS:CE1	1:C:45:LEU:CD2	2.04	1.39
1:A:175:ARG:HH22	1:E:349:MET:CE	1.35	1.38
1:C:27:HIS:ND1	1:C:287:GLY:CA	1.85	1.37
1:A:100:GLY:CA	1:A:108:PHE:HB3	1.53	1.37
1:C:138:ARG:NH1	1:C:166:LYS:HE2	1.36	1.35
1:C:138:ARG:CG	1:C:166:LYS:HE3	1.58	1.33
1:E:74:CYS:HB2	1:E:77:GLN:NE2	1.44	1.33
1:C:138:ARG:CD	1:C:166:LYS:CE	2.04	1.32
1:C:183:PHE:CE1	1:C:301:LYS:CB	2.12	1.32
1:C:183:PHE:HE1	1:C:301:LYS:CB	1.40	1.31
1:C:27:HIS:CE1	1:C:287:GLY:HA2	1.64	1.31
1:E:308:CYS:N	1:E:339:CYS:SG	2.04	1.31
1:C:68:MET:CE	1:C:255:VAL:HB	1.65	1.26
1:C:154:ASN:HD21	3:H:1:NAG:C7	1.47	1.26
1:E:109:GLY:O	1:E:110:LYS:HG3	1.08	1.25
1:A:175:ARG:NH2	1:E:349:MET:CE	1.95	1.25
1:C:138:ARG:HH11	1:C:166:LYS:CE	1.48	1.24
1:C:27:HIS:ND1	1:C:45:LEU:HD23	1.52	1.24
1:C:138:ARG:CD	1:C:166:LYS:HE3	1.64	1.24
1:C:109:GLY:O	1:C:110:LYS:HG3	1.09	1.23
1:C:27:HIS:HD1	1:C:287:GLY:CA	1.45	1.23
1:A:100:GLY:CA	1:A:108:PHE:CB	2.11	1.22
1:A:159:GLU:O	1:A:160:THR:HG23	1.40	1.21
1:A:175:ARG:NH2	1:E:349:MET:SD	2.15	1.20
1:A:74:CYS:HB3	1:A:75:PRO:CD	1.72	1.19
1:E:308:CYS:HB2	1:E:339:CYS:SG	1.83	1.18
1:E:210:HIS:HB2	1:E:275:ALA:O	1.44	1.18
1:E:308:CYS:CB	1:E:339:CYS:SG	2.32	1.18
1:A:100:GLY:HA2	1:A:108:PHE:CA	1.75	1.17

Continued on next page...

Continued from previous page...

Atom-1	Atom-2	Interatomic distance (Å)	Clash overlap (Å)
1:C:382:PHE:CZ	1:C:405:SER:HA	1.82	1.15
1:E:308:CYS:HA	1:E:339:CYS:SG	1.82	1.15
1:A:222:PRO:HG2	2:B:3:THR:CB	1.72	1.14
1:C:27:HIS:ND1	1:C:287:GLY:HA2	1.54	1.14
1:C:320:GLU:C	1:E:108:PHE:CE1	2.20	1.14
1:C:382:PHE:CE2	1:C:405:SER:CA	2.29	1.14
1:E:159:GLU:O	1:E:160:THR:HG23	1.49	1.13
1:C:27:HIS:NE2	1:C:48:THR:HG23	1.64	1.12
1:C:320:GLU:C	1:E:108:PHE:HE1	1.50	1.12
1:E:74:CYS:O	1:E:77:GLN:CG	1.97	1.12
1:C:90:TYR:OH	1:C:118:LYS:HE2	1.49	1.11
1:C:159:GLU:O	1:C:160:THR:HG23	1.48	1.11
1:E:109:GLY:O	1:E:110:LYS:CG	1.96	1.11
1:C:109:GLY:O	1:C:110:LYS:CG	1.97	1.10
1:A:74:CYS:HB3	1:A:75:PRO:HD2	1.14	1.10
2:D:69:LEU:O	2:D:72:PRO:HD2	1.50	1.10
1:E:15:MET:CB	1:E:21:VAL:HG23	1.82	1.09
1:E:74:CYS:CB	1:E:77:GLN:NE2	2.16	1.08
1:C:68:MET:HE1	1:C:255:VAL:HB	1.24	1.08
1:E:1:ILE:CG1	1:E:147:GLN:NE2	2.16	1.08
1:C:27:HIS:NE2	1:C:48:THR:CG2	2.19	1.06
1:C:108:PHE:CE1	1:E:321:THR:CB	2.39	1.06
1:C:465:GLN:HE21	1:C:494:VAL:HG11	1.20	1.05
1:C:154:ASN:ND2	3:H:1:NAG:C7	2.20	1.05
1:E:335:THR:CB	1:E:370:GLU:HA	1.86	1.05
1:E:74:CYS:C	1:E:77:GLN:HE21	1.59	1.05
1:E:15:MET:CB	1:E:21:VAL:CG2	2.34	1.04
1:E:74:CYS:HB3	1:E:75:PRO:HD2	1.36	1.04
1:E:312:PHE:HD2	1:E:389:ILE:HG22	1.18	1.04
1:C:277:MET:CE	1:C:279:GLY:O	2.06	1.03
1:E:74:CYS:CA	1:E:77:GLN:HE21	1.71	1.03
1:A:74:CYS:CB	1:A:75:PRO:HD2	1.78	1.02
1:A:107:LEU:O	1:A:109:GLY:N	1.90	1.02
1:C:420:ARG:O	1:C:424:LEU:HB2	1.58	1.02
1:C:138:ARG:CD	1:C:166:LYS:NZ	2.18	1.01
1:C:27:HIS:HD1	1:C:287:GLY:HA3	0.88	1.01
1:A:175:ARG:HH22	1:E:349:MET:HE2	0.85	1.00
1:A:146:SER:O	1:A:374:MET:HA	1.61	1.00
1:C:68:MET:HE1	1:C:255:VAL:CB	1.90	1.00
1:C:146:SER:O	1:C:374:MET:HA	1.61	0.99
1:C:465:GLN:NE2	1:C:494:VAL:CG1	2.05	0.99

Continued on next page...

Continued from previous page...

Atom-1	Atom-2	Interatomic distance (Å)	Clash overlap (Å)
1:A:107:LEU:C	1:A:109:GLY:H	1.66	0.98
1:A:74:CYS:O	1:A:75:PRO:O	1.80	0.98
1:C:108:PHE:HE1	1:E:321:THR:CB	1.75	0.97
1:C:90:TYR:CE1	1:C:118:LYS:CG	2.47	0.97
1:E:74:CYS:HB2	1:E:77:GLN:HE22	1.00	0.97
1:C:108:PHE:HE1	1:E:321:THR:CA	1.77	0.97
1:C:101:TRP:HH2	1:E:327:THR:OG1	1.38	0.97
1:E:309:THR:HG22	1:E:310:ALA:H	1.26	0.96
1:C:90:TYR:CE1	1:C:118:LYS:HG3	2.00	0.96
1:C:465:GLN:HE21	1:C:494:VAL:HG13	0.91	0.96
1:E:1:ILE:HG12	1:E:147:GLN:HE22	1.31	0.96
1:C:108:PHE:CE1	1:E:321:THR:CA	2.48	0.95
1:C:90:TYR:OH	1:C:118:LYS:CE	2.14	0.95
1:C:309:THR:HG22	1:C:310:ALA:H	1.30	0.95
1:C:154:ASN:ND2	3:H:1:NAG:C8	2.30	0.94
1:A:100:GLY:HA2	1:A:108:PHE:HA	1.47	0.94
1:C:163:ASN:O	1:C:180:LEU:HD22	1.66	0.93
1:A:100:GLY:HA2	1:A:108:PHE:HB3	1.08	0.93
1:A:309:THR:HG22	1:A:310:ALA:H	1.29	0.93
1:E:312:PHE:O	1:E:396:ILE:HG12	1.68	0.93
1:E:247:ASP:CB	1:E:253:GLN:HA	1.99	0.93
1:C:138:ARG:HD3	1:C:166:LYS:HZ1	1.31	0.93
1:C:154:ASN:HD21	3:H:1:NAG:C8	1.81	0.92
1:C:277:MET:HE3	1:C:279:GLY:O	1.67	0.91
2:D:74:TYR:O	2:F:28:HIS:CB	2.17	0.91
1:C:68:MET:CE	1:C:255:VAL:CB	2.47	0.91
1:E:74:CYS:O	1:E:77:GLN:HG2	1.68	0.91
1:A:16:SER:O	1:A:18:GLY:N	2.03	0.91
1:C:101:TRP:CZ3	1:E:327:THR:OG1	2.23	0.91
1:E:19:THR:CB	1:E:295:MET:H	1.83	0.90
1:C:138:ARG:HD3	1:C:166:LYS:HE2	1.53	0.90
1:E:312:PHE:CE2	1:E:341:VAL:HG13	2.07	0.90
1:C:320:GLU:O	1:E:108:PHE:CD1	2.25	0.90
1:E:49:THR:HG22	1:E:283:ARG:HG2	1.53	0.90
1:E:160:THR:O	1:E:161:ASP:O	1.90	0.90
1:E:74:CYS:O	1:E:75:PRO:O	1.88	0.89
1:C:27:HIS:ND1	1:C:45:LEU:CD2	2.22	0.89
1:C:138:ARG:HG3	1:C:166:LYS:HE3	1.52	0.88
1:E:19:THR:CB	1:E:295:MET:N	2.37	0.88
1:C:90:TYR:CE1	1:C:118:LYS:HG2	2.09	0.87
1:C:171:PRO:O	1:C:173:SER:N	2.07	0.87

Continued on next page...

Continued from previous page...

Atom-1	Atom-2	Interatomic distance (Å)	Clash overlap (Å)
1:C:321:THR:N	1:E:108:PHE:HE1	1.70	0.87
1:A:159:GLU:O	1:A:160:THR:CG2	2.22	0.87
1:A:175:ARG:NH2	1:E:349:MET:HE2	1.70	0.87
1:C:89:GLN:H	1:C:239:LYS:NZ	1.71	0.87
1:C:108:PHE:CD1	1:E:321:THR:HA	2.10	0.87
1:C:73:ARG:HG3	1:C:77:GLN:HG3	1.56	0.87
1:E:210:HIS:CB	1:E:275:ALA:O	2.22	0.87
1:A:171:PRO:O	1:A:173:SER:N	2.07	0.86
1:C:75:PRO:O	1:C:76:THR:OG1	1.93	0.86
1:E:1:ILE:CG1	1:E:147:GLN:HE21	1.81	0.85
1:E:312:PHE:CD2	1:E:389:ILE:HG22	2.09	0.85
1:E:171:PRO:O	1:E:173:SER:N	2.07	0.85
1:C:238:ASN:O	1:C:239:LYS:HB2	1.75	0.85
1:A:99:ARG:O	1:A:108:PHE:HA	1.77	0.84
1:C:154:ASN:ND2	3:H:1:NAG:O7	2.07	0.84
1:E:74:CYS:CB	1:E:77:GLN:HE21	1.85	0.84
1:E:316:LYS:O	1:E:317:ILE:O	1.95	0.84
1:C:347:VAL:O	1:C:348:ASP:CB	2.26	0.84
1:A:100:GLY:HA3	1:A:108:PHE:CB	2.05	0.84
1:E:77:GLN:O	1:E:78:GLY:O	1.95	0.83
1:C:27:HIS:HE1	1:C:45:LEU:HD21	1.40	0.83
1:E:74:CYS:O	1:E:77:GLN:HG3	1.76	0.83
1:C:101:TRP:CH2	1:E:327:THR:CB	2.62	0.82
2:D:69:LEU:O	2:D:72:PRO:CD	2.28	0.82
1:C:424:LEU:O	1:C:425:GLY:O	1.98	0.82
1:A:1:ILE:HG12	1:A:147:GLN:HE21	1.45	0.81
1:C:46:VAL:HG12	1:C:47:THR:HG23	1.62	0.81
1:A:46:VAL:HG12	1:A:47:THR:HG23	1.62	0.81
1:C:89:GLN:H	1:C:239:LYS:HZ1	1.25	0.81
1:A:193:ARG:HH21	1:E:398:HIS:CE1	1.99	0.81
1:E:273:LEU:CD2	2:F:12:LEU:CB	2.58	0.81
1:C:27:HIS:ND1	1:C:287:GLY:HA3	1.65	0.81
1:C:1:ILE:HG12	1:C:147:GLN:HE21	1.45	0.80
1:E:46:VAL:HG12	1:E:47:THR:HG23	1.62	0.80
1:C:321:THR:CA	1:E:108:PHE:HE1	1.95	0.80
1:A:74:CYS:HB3	1:A:75:PRO:HD3	1.64	0.80
1:C:321:THR:HA	1:E:108:PHE:CE1	2.17	0.80
1:E:19:THR:O	1:E:294:LYS:HA	1.82	0.80
1:A:100:GLY:CA	1:A:108:PHE:HB2	2.09	0.79
1:C:321:THR:CA	1:E:108:PHE:CE1	2.66	0.79
1:C:382:PHE:CZ	1:C:405:SER:CA	2.62	0.79

Continued on next page...

Continued from previous page...

Atom-1	Atom-2	Interatomic distance (Å)	Clash overlap (Å)
1:E:1:ILE:HG12	1:E:147:GLN:HE21	0.98	0.79
1:C:17:GLY:O	1:C:19:THR:N	2.16	0.79
1:C:321:THR:HA	1:E:108:PHE:CD1	2.17	0.79
1:E:273:LEU:HD21	2:F:12:LEU:CB	2.12	0.78
1:C:90:TYR:HE1	1:C:118:LYS:HG3	1.44	0.78
1:C:93:LYS:CB	1:C:245:PHE:CE2	2.66	0.78
1:C:245:PHE:HD2	1:C:253:GLN:HE21	1.29	0.78
1:C:27:HIS:H	1:C:287:GLY:HA3	1.47	0.78
1:E:27:HIS:H	1:E:287:GLY:HA3	1.47	0.78
1:E:74:CYS:CA	1:E:77:GLN:NE2	2.45	0.78
1:C:101:TRP:O	1:C:104:GLY:N	2.16	0.77
1:C:108:PHE:CE1	1:E:321:THR:HA	2.18	0.77
1:E:312:PHE:HD2	1:E:389:ILE:CG2	1.96	0.77
1:A:143:VAL:HB	1:A:163:ASN:CB	2.15	0.77
1:A:27:HIS:H	1:A:287:GLY:HA3	1.47	0.77
1:C:138:ARG:HH11	1:C:166:LYS:HE2	0.66	0.76
2:D:19:TRP:CD1	2:D:20:LEU:HG	2.20	0.76
2:B:19:TRP:CD1	2:B:20:LEU:HG	2.20	0.76
2:F:19:TRP:CD1	2:F:20:LEU:HG	2.20	0.76
1:C:101:TRP:CZ3	1:E:327:THR:CB	2.67	0.76
1:A:78:GLY:O	1:A:79:GLU:O	2.04	0.76
1:A:74:CYS:CB	1:A:75:PRO:CD	2.43	0.75
1:C:109:GLY:C	1:C:110:LYS:HG3	2.04	0.75
1:C:138:ARG:CZ	1:C:166:LYS:HE2	2.14	0.75
1:A:78:GLY:O	1:A:79:GLU:C	2.23	0.75
1:E:309:THR:HG22	1:E:310:ALA:N	2.01	0.74
1:E:312:PHE:HE2	1:E:341:VAL:HG13	1.52	0.74
1:C:75:PRO:HG2	1:C:107:LEU:O	1.86	0.74
1:E:109:GLY:C	1:E:110:LYS:HG3	2.04	0.74
1:E:210:HIS:CE1	1:E:277:MET:SD	2.79	0.74
1:C:90:TYR:CZ	1:C:118:LYS:HG2	2.23	0.74
1:C:426:ASP:H	1:C:446:HIS:CD2	2.06	0.74
1:C:465:GLN:CD	1:C:494:VAL:HG13	2.07	0.74
1:E:426:ASP:H	1:E:446:HIS:CD2	2.07	0.73
1:C:163:ASN:C	1:C:180:LEU:HD22	2.09	0.73
1:E:74:CYS:HB3	1:E:75:PRO:CD	2.16	0.73
1:A:107:LEU:C	1:A:109:GLY:N	2.38	0.73
1:E:159:GLU:O	1:E:160:THR:CG2	2.33	0.73
2:D:75:SER:C	2:F:69:LEU:HD11	2.09	0.73
1:C:309:THR:HG22	1:C:310:ALA:N	2.04	0.72
1:A:81:TYR:CE2	1:C:230:ASP:HB2	2.24	0.72

Continued on next page...

Continued from previous page...

Atom-1	Atom-2	Interatomic distance (Å)	Clash overlap (Å)
1:A:136:GLU:HA	1:A:170:THR:HG22	1.71	0.72
1:C:43:ILE:CD1	1:C:293:LEU:HD11	2.19	0.72
1:A:309:THR:HG22	1:A:310:ALA:N	2.04	0.72
1:C:136:GLU:HA	1:C:170:THR:HG22	1.71	0.72
1:A:479:THR:O	1:A:480:LYS:CB	2.35	0.72
1:A:426:ASP:H	1:A:446:HIS:CD2	2.07	0.72
1:E:15:MET:CB	1:E:21:VAL:HG22	2.18	0.71
1:A:62:GLU:HA	1:A:260:SER:HA	1.73	0.71
1:E:75:PRO:O	1:E:77:GLN:HG2	1.89	0.71
1:C:159:GLU:O	1:C:160:THR:CG2	2.34	0.71
1:C:62:GLU:HA	1:C:260:SER:HA	1.73	0.71
1:C:277:MET:HE2	1:C:279:GLY:O	1.89	0.71
1:E:136:GLU:HA	1:E:170:THR:HG22	1.71	0.70
1:E:19:THR:CB	1:E:295:MET:CA	2.70	0.70
1:C:382:PHE:CG	1:C:405:SER:HB3	2.26	0.70
1:E:161:ASP:HB2	1:E:164:ARG:HH21	1.54	0.70
1:E:74:CYS:O	1:E:77:GLN:NE2	2.23	0.70
1:C:14:GLY:O	1:C:16:SER:N	2.24	0.70
2:D:2:VAL:O	2:D:4:LEU:N	2.25	0.70
1:E:74:CYS:C	1:E:77:GLN:NE2	2.42	0.70
2:F:2:VAL:O	2:F:4:LEU:N	2.24	0.70
1:E:305:TYR:CD1	1:E:338:PRO:O	2.45	0.70
1:C:138:ARG:HG2	1:C:166:LYS:HE3	1.69	0.70
1:C:314:PHE:HE2	1:C:398:HIS:HB2	1.57	0.70
1:C:27:HIS:ND1	1:C:287:GLY:N	2.39	0.70
1:A:314:PHE:HE2	1:A:398:HIS:HB2	1.56	0.69
1:A:77:GLN:O	1:A:79:GLU:N	2.25	0.69
1:A:100:GLY:HA3	1:A:108:PHE:HB2	1.72	0.69
1:A:175:ARG:NH2	1:E:349:MET:HE1	2.03	0.69
1:C:384:ASP:CB	1:C:399:HIS:HE1	2.05	0.69
1:E:100:GLY:N	1:E:103:ASN:OD1	2.26	0.69
1:E:62:GLU:HA	1:E:260:SER:HA	1.73	0.69
1:E:312:PHE:CE1	1:E:332:TYR:CB	2.76	0.69
1:C:100:GLY:N	1:C:103:ASN:OD1	2.26	0.68
1:C:108:PHE:HE1	1:E:321:THR:N	1.91	0.68
1:C:93:LYS:CB	1:C:245:PHE:CZ	2.76	0.68
1:C:382:PHE:HA	1:C:402:ARG:CB	2.23	0.68
1:E:275:ALA:CB	1:E:284:LEU:HD23	2.24	0.68
2:F:71:ALA:HB3	2:F:72:PRO:HD3	1.75	0.68
1:A:100:GLY:N	1:A:103:ASN:OD1	2.26	0.68
1:E:75:PRO:HG2	1:E:107:LEU:HB2	1.74	0.68

Continued on next page...

Continued from previous page...

Atom-1	Atom-2	Interatomic distance (Å)	Clash overlap (Å)
1:A:230:ASP:HB2	1:C:81:TYR:CE2	2.27	0.67
1:A:100:GLY:HA3	1:A:108:PHE:HB3	1.62	0.67
1:C:384:ASP:CB	1:C:399:HIS:CE1	2.77	0.67
2:F:3:THR:O	2:F:4:LEU:C	2.33	0.67
1:A:100:GLY:C	1:A:108:PHE:HB3	2.15	0.67
1:C:163:ASN:O	1:C:180:LEU:CD2	2.41	0.67
1:A:19:THR:CB	1:A:295:MET:H	2.08	0.67
1:A:80:ALA:HA	1:C:229:ALA:HB3	1.77	0.67
1:A:88:THR:O	1:A:90:TYR:N	2.28	0.67
1:E:88:THR:O	1:E:90:TYR:N	2.28	0.66
1:A:230:ASP:HB2	1:C:81:TYR:CZ	2.31	0.66
1:A:81:TYR:HB2	1:A:85:GLN:OE1	1.96	0.66
1:E:81:TYR:HB2	1:E:85:GLN:OE1	1.96	0.66
1:C:88:THR:O	1:C:90:TYR:N	2.28	0.66
1:E:210:HIS:NE2	1:E:277:MET:SD	2.69	0.66
1:C:138:ARG:HD3	1:C:166:LYS:HZ2	1.56	0.66
1:C:154:ASN:ND2	3:H:1:NAG:H81	2.11	0.66
1:E:272:ALA:HB2	2:F:7:HIS:CD2	2.31	0.66
1:A:154:ASN:CG	3:G:1:NAG:C1	2.64	0.65
1:C:81:TYR:HB2	1:C:85:GLN:OE1	1.96	0.65
1:C:43:ILE:HD12	1:C:293:LEU:HD11	1.77	0.65
1:C:272:ALA:HB2	2:D:7:HIS:CD2	2.32	0.65
1:E:161:ASP:OD2	1:E:164:ARG:NH2	2.30	0.65
2:D:3:THR:O	2:D:4:LEU:C	2.33	0.65
1:E:349:MET:HE3	1:E:352:LEU:HD21	1.79	0.65
1:A:76:THR:O	1:A:77:GLN:HG2	1.95	0.65
1:A:170:THR:HB	1:A:171:PRO:HD2	1.78	0.65
1:C:57:ARG:NH1	1:C:219:HIS:O	2.29	0.65
1:C:146:SER:CB	1:C:374:MET:CB	2.75	0.65
1:C:27:HIS:CE1	1:C:287:GLY:CA	2.47	0.65
1:C:238:ASN:O	1:C:239:LYS:CB	2.42	0.65
1:C:245:PHE:HD2	1:C:253:GLN:NE2	1.95	0.65
1:E:273:LEU:H	1:E:273:LEU:HD22	1.62	0.65
1:A:72:SER:OG	1:A:113:LEU:HD23	1.98	0.64
1:E:135:LEU:O	1:E:171:PRO:HD3	1.97	0.64
1:C:101:TRP:CD1	1:C:106:GLY:HA2	2.32	0.64
1:E:72:SER:OG	1:E:113:LEU:HD23	1.98	0.64
1:E:436:GLY:O	1:E:440:SER:N	2.29	0.64
1:C:108:PHE:CE1	1:E:320:GLU:O	2.49	0.64
1:C:68:MET:CE	1:C:255:VAL:CG2	2.76	0.64
1:A:146:SER:CB	1:A:374:MET:CB	2.76	0.64

Continued on next page...

Continued from previous page...

Atom-1	Atom-2	Interatomic distance (Å)	Clash overlap (Å)
1:C:58:SER:OG	1:C:226:HIS:HB3	1.98	0.64
1:C:72:SER:OG	1:C:113:LEU:HD23	1.98	0.64
1:C:135:LEU:O	1:C:171:PRO:HD3	1.98	0.64
1:C:170:THR:HB	1:C:171:PRO:HD2	1.79	0.64
1:A:135:LEU:O	1:A:171:PRO:HD3	1.97	0.63
1:C:108:PHE:CE1	1:E:320:GLU:C	2.72	0.63
1:A:163:ASN:O	1:A:164:ARG:HG3	1.98	0.63
2:D:39:ASN:HD22	1:E:459:GLY:HA2	1.63	0.63
2:D:75:SER:O	2:F:69:LEU:HD11	1.97	0.63
1:C:183:PHE:CD1	1:C:301:LYS:CB	2.78	0.63
1:E:312:PHE:CD2	1:E:389:ILE:CG2	2.77	0.63
1:E:76:THR:C	1:E:77:GLN:HG2	2.18	0.63
1:E:275:ALA:HB1	1:E:284:LEU:HD23	1.81	0.63
1:E:58:SER:OG	1:E:226:HIS:HB3	1.98	0.63
1:E:170:THR:HB	1:E:171:PRO:HD2	1.79	0.63
1:C:88:THR:C	1:C:90:TYR:H	2.02	0.63
1:E:88:THR:C	1:E:90:TYR:H	2.02	0.63
1:A:436:GLY:O	1:A:440:SER:N	2.29	0.62
1:C:188:LEU:HG	1:C:293:LEU:HD23	1.81	0.62
1:C:436:GLY:O	1:C:440:SER:N	2.29	0.62
1:A:58:SER:OG	1:A:226:HIS:HB3	1.98	0.62
1:C:108:PHE:HD1	1:E:321:THR:HA	1.62	0.62
1:A:14:GLY:O	1:A:35:ALA:CB	2.48	0.62
1:A:88:THR:C	1:A:90:TYR:H	2.02	0.62
1:C:152:ILE:HG22	1:C:153:VAL:HG23	1.81	0.62
1:C:245:PHE:CD2	1:C:253:GLN:NE2	2.68	0.62
1:C:43:ILE:CD1	1:C:293:LEU:CD1	2.77	0.62
1:A:193:ARG:HH21	1:E:398:HIS:HE1	1.43	0.62
1:C:359:ILE:O	1:C:359:ILE:HG13	1.99	0.61
1:C:382:PHE:CD2	1:C:405:SER:CA	2.82	0.61
1:A:152:ILE:HG22	1:A:153:VAL:HG23	1.81	0.61
3:H:1:NAG:C6	3:H:2:NAG:H82	2.31	0.61
1:A:172:ASN:O	1:A:173:SER:HB3	2.00	0.61
1:A:308:CYS:O	1:A:309:THR:O	2.19	0.61
1:C:172:ASN:O	1:C:173:SER:HB3	2.00	0.61
1:E:172:ASN:O	1:E:173:SER:HB3	2.00	0.60
1:A:482:GLY:O	1:A:484:ILE:N	2.35	0.60
1:C:89:GLN:N	1:C:239:LYS:NZ	2.45	0.60
1:C:382:PHE:HE2	1:C:405:SER:HA	1.49	0.60
1:C:85:GLN:HE22	1:C:94:ARG:HE	1.50	0.60
1:E:74:CYS:O	1:E:75:PRO:C	2.40	0.60

Continued on next page...

Continued from previous page...

Atom-1	Atom-2	Interatomic distance (Å)	Clash overlap (Å)
1:E:312:PHE:HE1	1:E:332:TYR:CB	2.13	0.60
1:A:81:TYR:CZ	1:C:230:ASP:HB2	2.36	0.60
1:C:27:HIS:HD1	1:C:45:LEU:HD23	1.56	0.59
1:E:311:ALA:HB3	1:E:334:GLY:H	1.67	0.59
1:C:27:HIS:CG	1:C:287:GLY:N	2.70	0.59
1:C:205:THR:HG22	1:C:210:HIS:ND1	2.18	0.59
1:C:248:ALA:O	1:C:250:ALA:N	2.36	0.59
1:C:308:CYS:O	1:C:309:THR:O	2.20	0.59
1:C:59:TYR:CE1	1:C:225:TRP:HB3	2.38	0.59
1:A:59:TYR:CE1	1:A:225:TRP:HB3	2.38	0.58
1:C:101:TRP:CZ3	1:E:327:THR:HB	2.39	0.58
1:C:319:ALA:HB3	1:E:108:PHE:CE2	2.38	0.58
1:C:465:GLN:HG3	1:C:494:VAL:CG1	2.34	0.58
1:A:70:SER:HA	1:A:82:LEU:HD11	1.86	0.58
1:C:382:PHE:CZ	1:C:405:SER:CB	2.87	0.58
1:E:59:TYR:CE1	1:E:225:TRP:HB3	2.38	0.58
1:A:217:TRP:CD1	2:B:7:HIS:HA	2.39	0.58
1:C:382:PHE:CE1	1:C:405:SER:HB2	2.37	0.58
1:A:205:THR:HG22	1:A:210:HIS:ND1	2.18	0.58
1:C:68:MET:HE1	1:C:255:VAL:CG2	2.32	0.58
1:E:335:THR:CB	1:E:370:GLU:CA	2.74	0.58
1:E:288:HIS:CD2	1:E:424:LEU:HD22	2.39	0.57
1:C:68:MET:HE2	1:C:255:VAL:HB	1.77	0.57
1:E:309:THR:CG2	1:E:310:ALA:H	2.09	0.57
1:E:70:SER:HA	1:E:82:LEU:HD11	1.86	0.57
1:E:205:THR:HG22	1:E:210:HIS:ND1	2.18	0.57
1:C:68:MET:HE2	1:C:255:VAL:CG2	2.35	0.57
1:E:311:ALA:HB1	1:E:333:ALA:HB3	1.87	0.57
1:E:101:TRP:O	1:E:104:GLY:N	2.37	0.57
1:A:482:GLY:O	1:A:483:SER:C	2.41	0.56
1:A:309:THR:CG2	1:A:310:ALA:H	2.12	0.56
1:C:348:ASP:O	1:C:386:TYR:CD2	2.58	0.56
2:D:39:ASN:ND2	1:E:459:GLY:HA2	2.20	0.56
1:A:172:ASN:HD21	1:E:314:PHE:HB2	1.70	0.56
1:A:288:HIS:CD2	1:A:424:LEU:HD22	2.39	0.56
1:C:27:HIS:CG	1:C:45:LEU:HD23	2.38	0.56
1:C:27:HIS:NE2	1:C:48:THR:HG21	2.17	0.56
1:C:70:SER:HA	1:C:82:LEU:HD11	1.86	0.56
1:C:108:PHE:CD1	1:E:321:THR:CB	2.88	0.56
1:E:19:THR:CB	1:E:296:ASP:N	2.68	0.56
1:E:1:ILE:HG21	1:E:147:GLN:HE22	1.69	0.56

Continued on next page...

Continued from previous page...

Atom-1	Atom-2	Interatomic distance (Å)	Clash overlap (Å)
1:A:19:THR:CB	1:A:295:MET:CB	2.84	0.56
1:E:358:LEU:HD12	1:E:378:LEU:HB3	1.88	0.56
1:C:50:VAL:HG11	1:C:130:ILE:HG12	1.88	0.56
1:E:261:GLN:O	1:E:264:ALA:N	2.28	0.56
1:E:310:ALA:O	1:E:311:ALA:HB2	2.06	0.56
2:F:72:PRO:O	2:F:73:ALA:HB2	2.06	0.56
1:C:108:PHE:CE1	1:E:321:THR:N	2.72	0.55
1:C:19:THR:CB	1:C:295:MET:H	2.19	0.55
1:E:27:HIS:N	1:E:287:GLY:HA3	2.20	0.55
1:A:310:ALA:O	1:A:311:ALA:HB2	2.05	0.55
1:C:27:HIS:CE1	1:C:48:THR:CG2	2.89	0.55
1:C:89:GLN:N	1:C:239:LYS:HZ1	2.02	0.55
1:C:382:PHE:CE2	1:C:405:SER:CB	2.90	0.55
1:C:382:PHE:CD2	1:C:405:SER:HB3	2.42	0.55
1:A:101:TRP:N	1:A:108:PHE:HB3	2.22	0.55
2:D:75:SER:HB3	2:F:32:VAL:HG23	1.88	0.55
1:A:101:TRP:O	1:A:104:GLY:N	2.37	0.55
1:A:214:HIS:H	2:B:7:HIS:HE1	1.55	0.55
1:E:19:THR:CB	1:E:295:MET:CB	2.84	0.55
1:A:50:VAL:HG11	1:A:130:ILE:HG12	1.88	0.55
1:C:358:LEU:HD12	1:C:378:LEU:HB3	1.88	0.55
1:A:261:GLN:O	1:A:264:ALA:N	2.28	0.55
1:E:19:THR:CB	1:E:295:MET:C	2.75	0.55
1:A:358:LEU:HD12	1:A:378:LEU:HB3	1.88	0.54
1:C:138:ARG:CD	1:C:166:LYS:HZ1	2.00	0.54
1:C:244:GLU:OE2	2:F:20:LEU:HA	2.05	0.54
1:C:424:LEU:C	1:C:425:GLY:O	2.45	0.54
1:C:321:THR:HA	1:E:108:PHE:HD1	1.71	0.54
1:E:74:CYS:O	1:E:77:GLN:CD	2.45	0.54
1:C:161:ASP:HB3	1:C:164:ARG:HH21	1.72	0.54
1:C:310:ALA:O	1:C:311:ALA:HB2	2.06	0.54
1:A:272:ALA:HB2	2:B:7:HIS:CD2	2.42	0.54
1:C:15:MET:CB	1:C:35:ALA:HB1	2.38	0.54
1:E:50:VAL:HG11	1:E:130:ILE:HG12	1.88	0.54
1:A:74:CYS:C	1:A:75:PRO:O	2.46	0.54
1:E:333:ALA:O	1:E:370:GLU:O	2.26	0.53
3:H:1:NAG:H62	3:H:2:NAG:H82	1.89	0.53
1:C:43:ILE:HD12	1:C:293:LEU:CD1	2.39	0.53
1:C:380:PRO:HB2	1:C:381:PRO:CD	2.38	0.53
1:C:90:TYR:CZ	1:C:118:LYS:CG	2.89	0.53
1:A:27:HIS:N	1:A:287:GLY:HA3	2.21	0.53

Continued on next page...

Continued from previous page...

Atom-1	Atom-2	Interatomic distance (Å)	Clash overlap (Å)
1:A:70:SER:HB3	1:A:115:THR:HG22	1.91	0.53
1:C:217:TRP:CD1	2:D:7:HIS:HA	2.43	0.53
1:E:273:LEU:HD22	1:E:273:LEU:N	2.22	0.53
1:C:101:TRP:HH2	1:E:327:THR:CB	2.14	0.53
1:C:70:SER:HB3	1:C:115:THR:HG22	1.90	0.53
1:C:27:HIS:N	1:C:287:GLY:HA3	2.20	0.53
1:C:73:ARG:HB3	1:C:77:GLN:HB2	1.91	0.53
1:C:108:PHE:CD1	1:E:321:THR:CA	2.81	0.53
1:A:19:THR:CB	1:A:295:MET:N	2.72	0.52
1:C:382:PHE:CE1	1:C:405:SER:CB	2.92	0.52
1:C:75:PRO:C	1:C:76:THR:HG1	2.02	0.52
1:C:261:GLN:HA	1:E:263:GLY:HA3	1.92	0.52
1:C:261:GLN:O	1:C:264:ALA:N	2.29	0.52
1:A:14:GLY:O	1:A:35:ALA:HB2	2.10	0.52
1:C:154:ASN:HD22	3:H:1:NAG:C8	2.22	0.52
1:E:301:LYS:O	1:E:305:TYR:HE2	1.93	0.52
1:E:161:ASP:CB	1:E:164:ARG:HH21	2.23	0.52
1:C:90:TYR:OH	1:C:118:LYS:HE3	2.04	0.51
1:C:309:THR:CG2	1:C:310:ALA:H	2.12	0.51
1:C:146:SER:O	1:C:147:GLN:O	2.29	0.51
1:E:70:SER:HB3	1:E:115:THR:HG22	1.91	0.51
1:C:319:ALA:CB	1:E:108:PHE:CE2	2.93	0.51
1:A:172:ASN:OD1	1:E:398:HIS:HD2	1.94	0.51
1:A:279:GLY:O	1:A:281:LYS:N	2.44	0.51
1:C:264:ALA:O	1:C:268:ALA:N	2.42	0.51
1:C:382:PHE:CD1	1:C:405:SER:HB3	2.46	0.51
1:A:135:LEU:O	1:A:171:PRO:CD	2.58	0.51
1:E:85:GLN:HG2	1:E:92:CYS:SG	2.51	0.51
1:A:59:TYR:N	1:A:125:MET:O	2.41	0.51
1:A:78:GLY:HA3	1:C:227:ALA:O	2.10	0.51
1:E:59:TYR:N	1:E:125:MET:O	2.41	0.51
1:A:159:GLU:O	1:A:160:THR:CB	2.59	0.50
1:C:135:LEU:O	1:C:171:PRO:CD	2.59	0.50
1:A:301:LYS:O	1:A:305:TYR:HE2	1.93	0.50
1:C:101:TRP:HZ3	1:E:327:THR:HB	1.77	0.50
1:C:384:ASP:CA	1:C:399:HIS:HE1	2.23	0.50
1:A:85:GLN:HG2	1:A:92:CYS:SG	2.51	0.50
1:C:85:GLN:HG2	1:C:92:CYS:SG	2.51	0.50
1:A:277:MET:CE	1:A:279:GLY:O	2.59	0.50
1:E:77:GLN:C	1:E:78:GLY:O	2.48	0.50
1:A:146:SER:O	1:A:374:MET:CA	2.49	0.50

Continued on next page...

Continued from previous page...

Atom-1	Atom-2	Interatomic distance (Å)	Clash overlap (Å)
1:A:264:ALA:O	1:A:268:ALA:N	2.43	0.50
1:C:20:TRP:CG	1:C:20:TRP:O	2.65	0.50
1:C:465:GLN:CG	1:C:494:VAL:HG13	2.42	0.49
1:C:59:TYR:N	1:C:125:MET:O	2.41	0.49
2:F:41:GLY:O	2:F:44:LEU:N	2.45	0.49
1:A:137:TYR:CZ	1:A:289:LEU:HD21	2.47	0.49
2:B:71:ALA:N	2:B:72:PRO:HD2	2.26	0.49
1:C:1:ILE:HG12	1:C:147:GLN:NE2	2.23	0.49
1:E:264:ALA:O	1:E:268:ALA:N	2.43	0.49
1:C:137:TYR:CZ	1:C:289:LEU:HD21	2.47	0.49
1:C:263:GLY:HA3	1:E:261:GLN:HA	1.93	0.49
2:D:41:GLY:O	2:D:44:LEU:N	2.45	0.49
1:C:68:MET:HE2	1:C:255:VAL:CB	2.38	0.49
1:E:135:LEU:O	1:E:171:PRO:CD	2.59	0.49
1:E:163:ASN:O	1:E:164:ARG:C	2.51	0.49
2:B:41:GLY:O	2:B:44:LEU:N	2.45	0.49
2:D:32:VAL:HG22	2:D:72:PRO:HG3	1.95	0.49
1:A:271:GLY:HA2	2:B:18:THR:HB	1.95	0.49
1:A:482:GLY:C	1:A:484:ILE:N	2.66	0.49
1:A:170:THR:O	1:A:171:PRO:C	2.51	0.49
1:E:170:THR:O	1:E:171:PRO:C	2.51	0.49
2:D:32:VAL:HG22	2:D:72:PRO:CG	2.42	0.48
1:A:303:VAL:O	1:A:304:SER:OG	2.27	0.48
1:E:128:LYS:N	1:E:203:TYR:O	2.45	0.48
1:A:20:TRP:CG	1:A:20:TRP:O	2.65	0.48
1:C:27:HIS:CG	1:C:287:GLY:CA	2.86	0.48
1:C:170:THR:O	1:C:171:PRO:C	2.51	0.48
1:A:17:GLY:O	1:A:20:TRP:CB	2.62	0.48
1:E:1:ILE:CG2	1:E:147:GLN:HE22	2.26	0.48
1:A:128:LYS:N	1:A:203:TYR:O	2.45	0.48
1:A:143:VAL:CB	1:A:163:ASN:CB	2.91	0.48
1:E:75:PRO:HG3	1:E:107:LEU:O	2.13	0.48
1:E:137:TYR:CZ	1:E:289:LEU:HD21	2.47	0.48
1:E:316:LYS:C	1:E:317:ILE:O	2.50	0.48
1:A:163:ASN:O	1:A:164:ARG:CG	2.62	0.47
1:A:74:CYS:O	1:A:75:PRO:C	2.47	0.47
1:A:80:ALA:HA	1:C:229:ALA:CB	2.43	0.47
1:C:348:ASP:O	1:C:386:TYR:HD2	1.96	0.47
1:E:308:CYS:O	1:E:309:THR:O	2.32	0.47
1:C:88:THR:C	1:C:90:TYR:N	2.67	0.47
1:C:226:HIS:CD2	1:C:228:GLY:H	2.33	0.47

Continued on next page...

Continued from previous page...

Atom-1	Atom-2	Interatomic distance (Å)	Clash overlap (Å)
1:E:88:THR:C	1:E:90:TYR:N	2.67	0.47
1:C:303:VAL:O	1:C:304:SER:OG	2.27	0.47
1:E:211:TRP:HA	1:E:274:GLU:HA	1.96	0.47
1:E:226:HIS:CD2	1:E:228:GLY:H	2.33	0.47
1:C:1:ILE:HG21	1:C:147:GLN:NE2	2.30	0.47
1:A:1:ILE:HG12	1:A:147:GLN:NE2	2.22	0.47
1:C:128:LYS:N	1:C:203:TYR:O	2.45	0.47
1:C:214:HIS:H	2:D:7:HIS:HE1	1.62	0.47
1:E:146:SER:CB	1:E:364:VAL:O	2.63	0.47
2:F:71:ALA:HB3	2:F:72:PRO:CD	2.42	0.47
1:A:88:THR:C	1:A:90:TYR:N	2.67	0.46
1:A:226:HIS:NE2	1:A:230:ASP:O	2.43	0.46
1:E:275:ALA:HB2	1:E:284:LEU:CD2	2.45	0.46
1:C:382:PHE:CD2	1:C:405:SER:CB	2.98	0.46
2:D:75:SER:HB2	2:F:32:VAL:CG2	2.45	0.46
1:E:212:LEU:N	1:E:273:LEU:O	2.49	0.46
1:C:157:GLY:C	1:C:159:GLU:H	2.17	0.46
1:C:213:VAL:HG11	1:C:218:PHE:HB2	1.97	0.46
1:E:213:VAL:HG11	1:E:218:PHE:HB2	1.98	0.46
1:E:426:ASP:H	1:E:446:HIS:HD2	1.60	0.46
1:C:19:THR:CB	1:C:295:MET:N	2.79	0.46
1:C:380:PRO:HG2	1:C:400:TRP:CZ3	2.50	0.46
1:A:213:VAL:HG11	1:A:218:PHE:HB2	1.97	0.46
1:A:226:HIS:CD2	1:A:228:GLY:H	2.33	0.46
1:A:1:ILE:HG21	1:A:147:GLN:NE2	2.30	0.46
1:A:214:HIS:H	2:B:7:HIS:CE1	2.34	0.46
1:C:419:LYS:O	1:C:422:ALA:HB3	2.16	0.46
1:E:187:GLY:O	1:E:294:LYS:N	2.43	0.46
1:C:68:MET:HE3	1:C:255:VAL:HB	1.83	0.46
1:C:74:CYS:HB3	1:C:75:PRO:HD2	1.98	0.45
1:C:222:PRO:HG3	2:D:3:THR:CB	2.46	0.45
1:C:426:ASP:H	1:C:446:HIS:HD2	1.60	0.45
1:C:465:GLN:NE2	1:C:494:VAL:HG11	2.03	0.45
1:E:226:HIS:NE2	1:E:230:ASP:O	2.43	0.45
1:A:187:GLY:O	1:A:294:LYS:N	2.43	0.45
1:C:22:ASP:HA	1:C:292:ARG:HA	1.99	0.45
1:C:319:ALA:HB3	1:E:108:PHE:CZ	2.52	0.45
1:E:144:HIS:HB3	1:E:360:THR:HG23	1.98	0.45
1:C:27:HIS:H	1:C:287:GLY:CA	2.24	0.45
1:C:188:LEU:HG	1:C:293:LEU:CD2	2.45	0.45
1:E:74:CYS:CB	1:E:77:GLN:HE22	1.91	0.45

Continued on next page...

Continued from previous page...

Atom-1	Atom-2	Interatomic distance (Å)	Clash overlap (Å)
1:E:275:ALA:CB	1:E:284:LEU:CD2	2.93	0.45
1:A:222:PRO:CD	2:B:4:LEU:H	2.30	0.45
1:A:365:ILE:O	1:A:365:ILE:HG13	2.17	0.45
1:E:365:ILE:HG13	1:E:365:ILE:O	2.17	0.45
1:A:22:ASP:HA	1:A:292:ARG:HA	1.99	0.45
1:A:308:CYS:N	1:A:339:CYS:SG	2.90	0.45
3:I:1:NAG:O3	3:I:1:NAG:C7	2.65	0.45
1:A:222:PRO:HD2	2:B:4:LEU:H	1.81	0.45
1:C:144:HIS:HB3	1:C:360:THR:HG23	1.98	0.45
1:A:261:GLN:O	1:A:263:GLY:N	2.50	0.45
1:A:416:ARG:NH2	1:A:420:ARG:HH21	2.15	0.45
1:C:72:SER:HG	1:C:113:LEU:HD23	1.81	0.45
1:C:365:ILE:O	1:C:365:ILE:HG13	2.17	0.45
1:A:426:ASP:H	1:A:446:HIS:HD2	1.60	0.44
1:C:147:GLN:OE1	1:C:162:GLU:CB	2.65	0.44
1:C:187:GLY:O	1:C:294:LYS:N	2.43	0.44
2:D:75:SER:CB	2:F:32:VAL:CG2	2.95	0.44
1:E:349:MET:HE3	1:E:349:MET:HA	1.99	0.44
1:C:138:ARG:CD	1:C:166:LYS:HZ2	2.22	0.44
1:C:261:GLN:O	1:C:263:GLY:N	2.51	0.44
1:C:382:PHE:CD1	1:C:405:SER:CB	3.00	0.44
1:E:261:GLN:O	1:E:263:GLY:N	2.50	0.44
1:A:131:GLN:HE21	1:C:76:THR:HG21	1.82	0.44
1:A:388:VAL:HG13	1:A:397:THR:HG22	2.00	0.44
1:C:246:LYS:HE2	1:E:274:GLU:OE2	2.18	0.44
1:C:308:CYS:N	1:C:339:CYS:SG	2.90	0.44
2:D:63:TYR:CE1	2:F:63:TYR:CE1	3.05	0.44
1:E:342:PRO:HG3	1:E:391:VAL:HG13	2.00	0.44
1:C:101:TRP:HZ3	1:E:327:THR:CB	2.23	0.44
1:C:127:GLY:HA3	1:C:218:PHE:CZ	2.53	0.44
1:C:319:ALA:CB	1:E:108:PHE:CZ	3.01	0.44
1:C:424:LEU:HB3	1:C:428:ALA:HB2	2.00	0.44
1:E:416:ARG:NH2	1:E:420:ARG:HH21	2.15	0.44
1:A:144:HIS:HB3	1:A:360:THR:HG23	1.98	0.44
1:C:342:PRO:HG3	1:C:391:VAL:HG13	2.00	0.44
1:E:214:HIS:H	2:F:7:HIS:HE1	1.65	0.44
1:C:2:ARG:HG3	1:C:2:ARG:O	2.18	0.43
1:C:388:VAL:HG13	1:C:397:THR:HG22	2.00	0.43
1:E:127:GLY:HA3	1:E:218:PHE:CZ	2.53	0.43
1:C:245:PHE:CD2	1:C:245:PHE:O	2.71	0.43
1:C:246:LYS:CE	1:E:274:GLU:OE2	2.67	0.43

Continued on next page...

Continued from previous page...

Atom-1	Atom-2	Interatomic distance (Å)	Clash overlap (Å)
1:C:271:GLY:HA2	2:D:18:THR:HB	1.99	0.43
1:E:22:ASP:HA	1:E:292:ARG:HA	1.99	0.43
1:A:88:THR:HG23	1:C:88:THR:HG23	2.00	0.43
1:A:127:GLY:HA3	1:A:218:PHE:CZ	2.53	0.43
1:C:424:LEU:O	1:C:425:GLY:C	2.56	0.43
1:E:20:TRP:CG	1:E:20:TRP:O	2.71	0.43
1:E:273:LEU:CD2	1:E:273:LEU:H	2.30	0.43
1:A:81:TYR:HD2	1:C:227:ALA:HB3	1.82	0.43
1:C:27:HIS:CE1	1:C:48:THR:HG21	2.53	0.43
1:A:227:ALA:HB3	1:C:81:TYR:HD2	1.84	0.43
1:A:277:MET:HE3	1:A:279:GLY:O	2.18	0.43
1:C:424:LEU:HD23	1:C:424:LEU:HA	1.78	0.43
1:E:275:ALA:HB2	1:E:284:LEU:HD23	1.99	0.43
1:A:2:ARG:HG3	1:A:2:ARG:O	2.18	0.43
1:C:146:SER:O	1:C:374:MET:CA	2.49	0.43
1:E:466:ILE:O	1:E:470:THR:N	2.37	0.43
1:A:59:TYR:HB2	1:A:125:MET:HG2	2.01	0.42
1:A:349:MET:C	1:A:351:THR:N	2.73	0.42
1:C:26:GLU:O	1:C:29:GLY:N	2.52	0.42
1:C:338:PRO:HB3	1:C:366:THR:HA	2.01	0.42
1:A:27:HIS:H	1:A:287:GLY:CA	2.25	0.42
1:A:191:GLU:HB3	1:E:399:HIS:CD2	2.53	0.42
1:A:227:ALA:HB3	1:C:81:TYR:CD2	2.54	0.42
1:C:73:ARG:O	1:C:74:CYS:HB2	2.19	0.42
1:C:73:ARG:HA	1:C:73:ARG:HD2	1.81	0.42
1:E:72:SER:HG	1:E:113:LEU:HD23	1.83	0.42
2:F:57:THR:O	2:F:61:VAL:HG23	2.20	0.42
2:F:73:ALA:C	2:F:75:SER:H	2.23	0.42
1:A:73:ARG:O	1:A:74:CYS:HB2	2.19	0.42
1:E:77:GLN:O	1:E:78:GLY:C	2.51	0.42
1:C:93:LYS:CB	1:C:245:PHE:CD2	3.03	0.42
1:E:2:ARG:O	1:E:2:ARG:HG3	2.19	0.42
1:A:146:SER:O	1:A:147:GLN:O	2.38	0.42
1:A:171:PRO:C	1:A:173:SER:N	2.73	0.42
1:E:105:CYS:O	1:E:106:GLY:O	2.37	0.42
1:A:209:LYS:O	1:A:210:HIS:CG	2.72	0.42
1:E:210:HIS:O	1:E:274:GLU:HG3	2.20	0.42
1:A:100:GLY:CA	1:A:108:PHE:HA	2.34	0.42
1:A:338:PRO:HB3	1:A:366:THR:HA	2.01	0.42
2:B:57:THR:O	2:B:61:VAL:HG23	2.20	0.42
1:C:155:ASP:O	1:C:157:GLY:N	2.53	0.42

Continued on next page...

Continued from previous page...

Atom-1	Atom-2	Interatomic distance (Å)	Clash overlap (Å)
1:C:209:LYS:O	1:C:210:HIS:CG	2.72	0.42
1:E:59:TYR:HB2	1:E:125:MET:HG2	2.02	0.42
1:E:388:VAL:HG13	1:E:397:THR:HG22	2.00	0.42
2:F:58:SER:O	2:F:61:VAL:N	2.52	0.42
1:A:157:GLY:HA3	1:A:164:ARG:NH2	2.35	0.42
1:C:246:LYS:HE3	2:F:19:TRP:CZ3	2.55	0.42
1:C:298:LEU:HD23	1:C:298:LEU:HA	1.83	0.42
1:E:380:PRO:HB2	1:E:381:PRO:HD2	2.02	0.42
1:A:17:GLY:O	1:A:20:TRP:N	2.48	0.41
1:A:26:GLU:O	1:A:29:GLY:N	2.52	0.41
1:C:89:GLN:N	1:C:239:LYS:HZ3	2.14	0.41
1:C:100:GLY:HA3	1:E:5:GLY:HA3	2.02	0.41
1:C:381:PRO:O	1:C:402:ARG:CB	2.68	0.41
2:D:57:THR:O	2:D:61:VAL:HG23	2.20	0.41
1:C:59:TYR:HB2	1:C:125:MET:HG2	2.02	0.41
1:C:245:PHE:O	1:C:245:PHE:CG	2.72	0.41
1:C:483:SER:C	1:C:485:SER:N	2.73	0.41
1:C:382:PHE:CZ	1:C:405:SER:HB2	2.56	0.41
1:E:288:HIS:NE2	1:E:424:LEU:HD22	2.35	0.41
1:A:19:THR:CB	1:A:295:MET:CA	2.99	0.41
1:A:298:LEU:HD23	1:A:298:LEU:HA	1.83	0.41
2:D:59:GLN:O	2:F:63:TYR:OH	2.37	0.41
1:E:26:GLU:O	1:E:29:GLY:N	2.52	0.41
1:E:27:HIS:H	1:E:287:GLY:CA	2.24	0.41
1:E:209:LYS:O	1:E:210:HIS:CG	2.73	0.41
1:A:342:PRO:HG2	1:A:390:GLY:HA2	2.01	0.41
1:A:342:PRO:HG3	1:A:391:VAL:HG13	2.02	0.41
2:B:71:ALA:HB3	2:B:72:PRO:HD3	2.02	0.41
1:C:4:ILE:O	1:C:6:VAL:N	2.54	0.41
1:C:68:MET:HE2	1:C:255:VAL:HG21	2.03	0.41
1:C:223:LEU:HD21	1:C:261:GLN:OE1	2.21	0.41
1:E:223:LEU:HD21	1:E:261:GLN:OE1	2.21	0.41
1:A:288:HIS:NE2	1:A:424:LEU:HD22	2.35	0.41
1:C:171:PRO:C	1:C:173:SER:N	2.73	0.41
1:E:74:CYS:CB	1:E:75:PRO:CD	2.84	0.41
1:A:258:LEU:HD23	1:A:258:LEU:HA	1.92	0.41
1:A:312:PHE:O	1:A:396:ILE:HG12	2.21	0.41
1:A:380:PRO:HB2	1:A:381:PRO:HD2	2.02	0.41
1:C:15:MET:CB	1:C:35:ALA:CB	2.99	0.41
1:C:161:ASP:HB3	1:C:164:ARG:NH2	2.35	0.41
1:E:303:VAL:O	1:E:304:SER:OG	2.27	0.41

Continued on next page...

Continued from previous page...

Atom-1	Atom-2	Interatomic distance (Å)	Clash overlap (Å)
1:A:157:GLY:O	1:A:160:THR:O	2.38	0.41
1:A:1:ILE:HG21	1:A:147:GLN:HE22	1.86	0.40
2:B:69:LEU:O	2:B:72:PRO:HD2	2.21	0.40
1:C:1:ILE:HG21	1:C:147:GLN:HE22	1.87	0.40
1:C:146:SER:O	1:C:147:GLN:C	2.60	0.40
1:C:321:THR:CB	1:E:108:PHE:CE1	3.04	0.40
1:E:4:ILE:H	1:E:9:ARG:NH2	2.19	0.40
1:C:312:PHE:O	1:C:396:ILE:HG12	2.21	0.40
1:A:203:TYR:OH	1:A:277:MET:HB3	2.22	0.40
1:C:105:CYS:O	1:C:106:GLY:O	2.39	0.40
1:E:281:LYS:HG2	1:E:281:LYS:O	2.21	0.40
1:A:223:LEU:HD21	1:A:261:GLN:OE1	2.21	0.40
1:A:339:CYS:SG	1:A:340:LYS:N	2.95	0.40
1:C:203:TYR:OH	1:C:277:MET:HB3	2.22	0.40
1:E:298:LEU:HD23	1:E:298:LEU:HA	1.83	0.40
1:A:4:ILE:H	1:A:9:ARG:NH2	2.19	0.40
1:A:98:ASP:OD1	1:A:110:LYS:HG2	2.21	0.40
1:A:212:LEU:O	1:A:272:ALA:HB1	2.21	0.40
1:A:331:GLN:HA	1:A:372:SER:O	2.21	0.40
1:C:314:PHE:HE1	1:C:389:ILE:HD12	1.86	0.40

There are no symmetry-related clashes.

5.3 Torsion angles [i](#)

5.3.1 Protein backbone [i](#)

In the following table, the Percentiles column shows the percent Ramachandran outliers of the chain as a percentile score with respect to all PDB entries followed by that with respect to all EM entries.

The Analysed column shows the number of residues for which the backbone conformation was analysed, and the total number of residues.

Mol	Chain	Analysed	Favoured	Allowed	Outliers	Percentiles	
1	A	499/504 (99%)	407 (82%)	61 (12%)	31 (6%)	1	20
1	C	499/504 (99%)	394 (79%)	71 (14%)	34 (7%)	1	18
1	E	499/504 (99%)	407 (82%)	65 (13%)	27 (5%)	2	22
2	B	73/75 (97%)	63 (86%)	7 (10%)	3 (4%)	3	27

Continued on next page...

Continued from previous page...

Mol	Chain	Analysed	Favoured	Allowed	Outliers	Percentiles	
2	D	73/75 (97%)	63 (86%)	8 (11%)	2 (3%)	5	35
2	F	73/75 (97%)	61 (84%)	9 (12%)	3 (4%)	3	27
All	All	1716/1737 (99%)	1395 (81%)	221 (13%)	100 (6%)	3	21

All (100) Ramachandran outliers are listed below:

Mol	Chain	Res	Type
1	A	15	MET
1	A	17	GLY
1	A	75	PRO
1	A	78	GLY
1	A	79	GLU
1	A	108	PHE
1	A	147	GLN
1	A	164	ARG
1	A	171	PRO
1	A	172	ASN
1	A	173	SER
1	A	309	THR
1	A	311	ALA
1	A	480	LYS
2	B	2	VAL
1	C	15	MET
1	C	18	GLY
1	C	38	LYS
1	C	101	TRP
1	C	147	GLN
1	C	171	PRO
1	C	172	ASN
1	C	173	SER
1	C	249	HIS
1	C	309	THR
1	C	311	ALA
1	C	348	ASP
1	C	350	GLN
2	D	3	THR
1	E	75	PRO
1	E	77	GLN
1	E	158	HIS
1	E	160	THR
1	E	161	ASP

Continued on next page...

Continued from previous page...

Mol	Chain	Res	Type
1	E	171	PRO
1	E	172	ASN
1	E	173	SER
1	E	278	ASP
1	E	309	THR
1	E	311	ALA
1	E	350	GLN
2	F	3	THR
1	A	106	GLY
1	A	146	SER
1	A	160	THR
1	A	162	GLU
1	A	249	HIS
1	A	280	ALA
1	A	352	LEU
1	A	434	VAL
1	A	479	THR
1	C	110	LYS
1	C	146	SER
1	C	156	THR
1	C	160	THR
1	C	422	ALA
1	C	425	GLY
1	C	434	VAL
1	E	76	THR
1	E	78	GLY
1	E	106	GLY
1	E	110	LYS
1	E	317	ILE
1	E	434	VAL
1	E	480	LYS
1	A	4	ILE
1	A	145	GLY
1	A	260	SER
1	A	483	SER
1	C	4	ILE
1	C	106	GLY
1	C	145	GLY
1	C	239	LYS
1	C	260	SER
1	C	384	ASP
1	C	424	LEU

Continued on next page...

Continued from previous page...

Mol	Chain	Res	Type
1	C	482	GLY
1	E	4	ILE
1	E	260	SER
1	E	314	PHE
1	A	58	SER
1	A	89	GLN
1	A	250	ALA
1	C	57	ARG
1	C	89	GLN
1	E	58	SER
1	E	89	GLN
1	E	156	THR
1	E	163	ASN
2	F	73	ALA
2	B	3	THR
1	C	158	HIS
1	E	144	HIS
1	C	144	HIS
2	D	2	VAL
2	F	2	VAL
2	B	5	PRO
1	C	302	GLY
1	C	381	PRO
1	A	109	GLY

5.3.2 Protein sidechains [i](#)

In the following table, the Percentiles column shows the percent sidechain outliers of the chain as a percentile score with respect to all PDB entries followed by that with respect to all EM entries.

The Analysed column shows the number of residues for which the sidechain conformation was analysed, and the total number of residues.

Mol	Chain	Analysed	Rotameric	Outliers	Percentiles	
1	A	221/410 (54%)	220 (100%)	1 (0%)	88	94
1	C	235/410 (57%)	232 (99%)	3 (1%)	69	82
1	E	225/410 (55%)	222 (99%)	3 (1%)	69	82
2	B	25/64 (39%)	25 (100%)	0	100	100
2	D	25/64 (39%)	25 (100%)	0	100	100

Continued on next page...

Continued from previous page...

Mol	Chain	Analysed	Rotameric	Outliers	Percentiles	
2	F	24/64 (38%)	24 (100%)	0	100	100
All	All	755/1422 (53%)	748 (99%)	7 (1%)	79	88

All (7) residues with a non-rotameric sidechain are listed below:

Mol	Chain	Res	Type
1	A	108	PHE
1	C	57	ARG
1	C	108	PHE
1	C	382	PHE
1	E	108	PHE
1	E	154	ASN
1	E	339	CYS

Sometimes sidechains can be flipped to improve hydrogen bonding and reduce clashes. All (19) such sidechains are listed below:

Mol	Chain	Res	Type
1	A	131	GLN
1	A	144	HIS
1	A	147	GLN
1	A	446	HIS
2	B	7	HIS
1	C	144	HIS
1	C	147	GLN
1	C	154	ASN
1	C	399	HIS
1	C	446	HIS
1	C	465	GLN
2	D	7	HIS
2	D	39	ASN
1	E	77	GLN
1	E	144	HIS
1	E	147	GLN
1	E	398	HIS
1	E	446	HIS
2	F	7	HIS

5.3.3 RNA

There are no RNA molecules in this entry.

5.4 Non-standard residues in protein, DNA, RNA chains [i](#)

There are no non-standard protein/DNA/RNA residues in this entry.

5.5 Carbohydrates [i](#)

6 monosaccharides are modelled in this entry.

In the following table, the Counts columns list the number of bonds (or angles) for which Mogul statistics could be retrieved, the number of bonds (or angles) that are observed in the model and the number of bonds (or angles) that are defined in the Chemical Component Dictionary. The Link column lists molecule types, if any, to which the group is linked. The Z score for a bond length (or angle) is the number of standard deviations the observed value is removed from the expected value. A bond length (or angle) with $|Z| > 2$ is considered an outlier worth inspection. RMSZ is the root-mean-square of all Z scores of the bond lengths (or angles).

Mol	Type	Chain	Res	Link	Bond lengths			Bond angles		
					Counts	RMSZ	# Z > 2	Counts	RMSZ	# Z > 2
3	NAG	G	1	3,1	14,14,15	0.55	0	17,19,21	0.99	1 (5%)
3	NAG	G	2	3	14,14,15	0.56	0	17,19,21	0.74	1 (5%)
3	NAG	H	1	3,1	14,14,15	0.60	0	17,19,21	0.67	0
3	NAG	H	2	3	14,14,15	0.56	0	17,19,21	0.60	0
3	NAG	I	1	3,1	14,14,15	0.80	0	17,19,21	0.89	2 (11%)
3	NAG	I	2	3	14,14,15	0.85	0	17,19,21	0.89	1 (5%)

In the following table, the Chirals column lists the number of chiral outliers, the number of chiral centers analysed, the number of these observed in the model and the number defined in the Chemical Component Dictionary. Similar counts are reported in the Torsion and Rings columns. '-' means no outliers of that kind were identified.

Mol	Type	Chain	Res	Link	Chirals	Torsions	Rings
3	NAG	G	1	3,1	-	4/6/23/26	0/1/1/1
3	NAG	G	2	3	-	2/6/23/26	0/1/1/1
3	NAG	H	1	3,1	-	5/6/23/26	0/1/1/1
3	NAG	H	2	3	-	4/6/23/26	0/1/1/1
3	NAG	I	1	3,1	-	4/6/23/26	0/1/1/1
3	NAG	I	2	3	-	4/6/23/26	0/1/1/1

There are no bond length outliers.

All (5) bond angle outliers are listed below:

Mol	Chain	Res	Type	Atoms	Z	Observed(°)	Ideal(°)
3	I	1	NAG	O5-C1-C2	-2.26	107.72	111.29
3	G	2	NAG	C2-N2-C7	-2.23	119.73	122.90
3	G	1	NAG	C4-C3-C2	2.08	114.07	111.02
3	I	2	NAG	C2-N2-C7	-2.03	120.01	122.90
3	I	1	NAG	C2-N2-C7	-2.03	120.02	122.90

There are no chirality outliers.

All (23) torsion outliers are listed below:

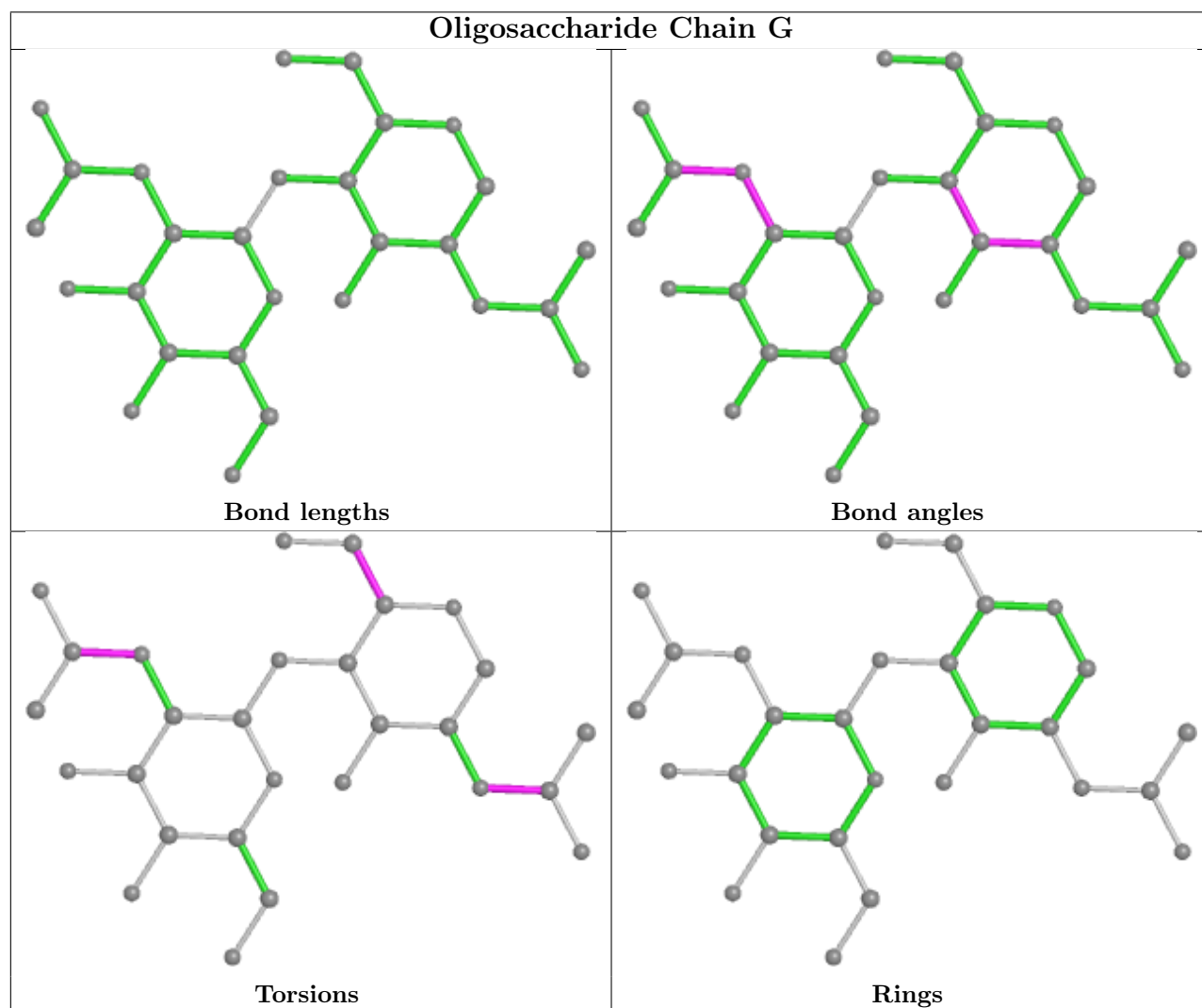
Mol	Chain	Res	Type	Atoms
3	G	1	NAG	C8-C7-N2-C2
3	G	1	NAG	O7-C7-N2-C2
3	G	2	NAG	C8-C7-N2-C2
3	G	2	NAG	O7-C7-N2-C2
3	H	1	NAG	C8-C7-N2-C2
3	H	1	NAG	O7-C7-N2-C2
3	H	2	NAG	C8-C7-N2-C2
3	H	2	NAG	O7-C7-N2-C2
3	I	1	NAG	C1-C2-N2-C7
3	I	2	NAG	C8-C7-N2-C2
3	I	2	NAG	O7-C7-N2-C2
3	G	1	NAG	C4-C5-C6-O6
3	I	2	NAG	C4-C5-C6-O6
3	G	1	NAG	O5-C5-C6-O6
3	I	2	NAG	O5-C5-C6-O6
3	H	1	NAG	C4-C5-C6-O6
3	I	1	NAG	C8-C7-N2-C2
3	H	2	NAG	O5-C5-C6-O6
3	H	1	NAG	C1-C2-N2-C7
3	I	1	NAG	O7-C7-N2-C2
3	H	1	NAG	O5-C5-C6-O6
3	H	2	NAG	C4-C5-C6-O6
3	I	1	NAG	C3-C2-N2-C7

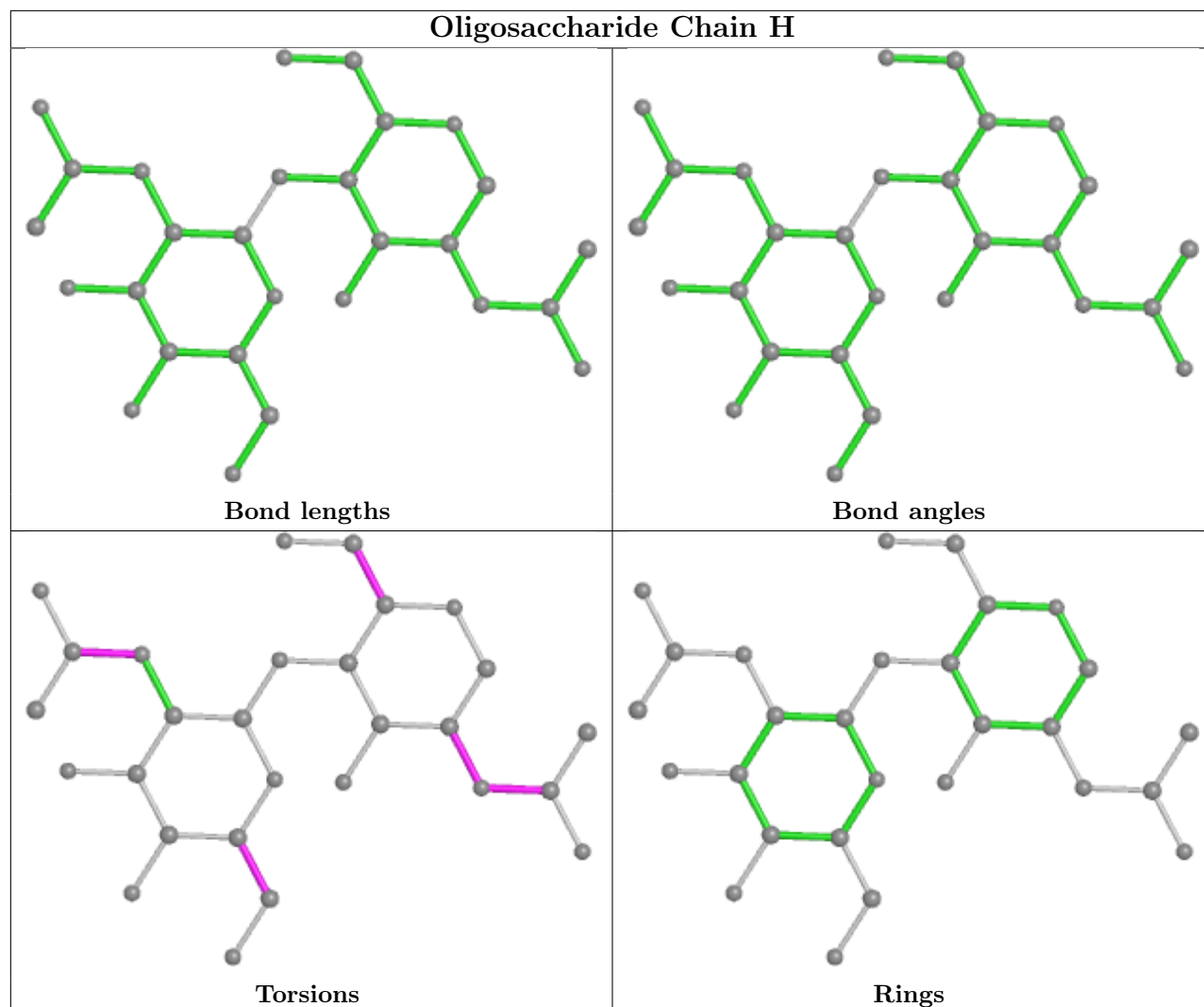
There are no ring outliers.

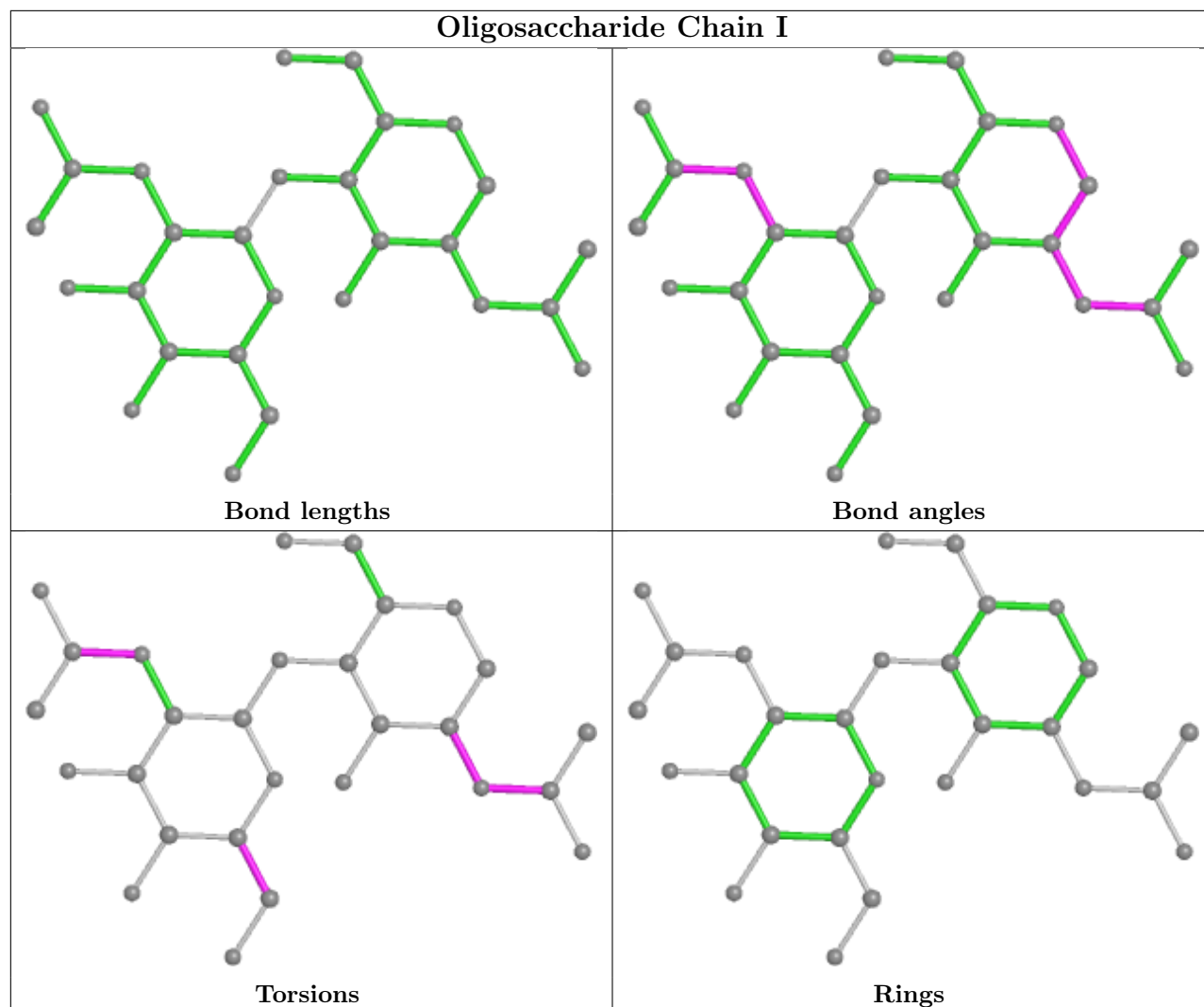
4 monomers are involved in 11 short contacts:

Mol	Chain	Res	Type	Clashes	Symm-Clashes
3	H	1	NAG	9	0
3	I	1	NAG	1	0
3	H	2	NAG	2	0
3	G	1	NAG	1	0

The following is a two-dimensional graphical depiction of Mogul quality analysis of bond lengths, bond angles, torsion angles, and ring geometry for oligosaccharide.







5.6 Ligand geometry [i](#)

There are no ligands in this entry.

5.7 Other polymers [i](#)

There are no such residues in this entry.

5.8 Polymer linkage issues [i](#)

There are no chain breaks in this entry.

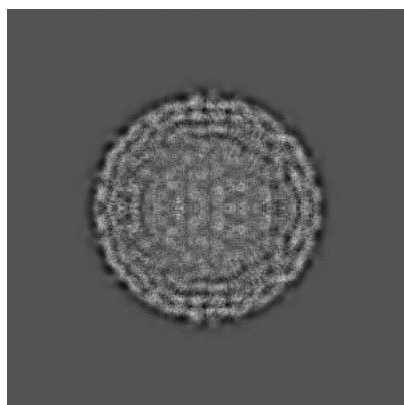
6 Map visualisation [i](#)

This section contains visualisations of the EMDB entry EMD-8116. These allow visual inspection of the internal detail of the map and identification of artifacts.

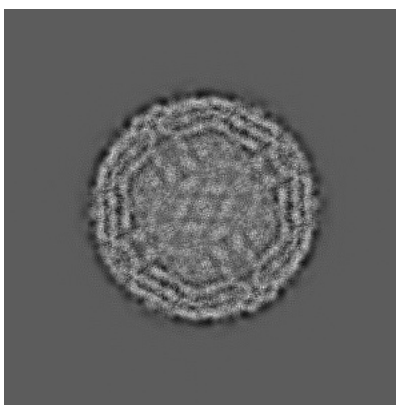
No raw map or half-maps were deposited for this entry and therefore no images, graphs, etc. pertaining to the raw map can be shown.

6.1 Orthogonal projections [i](#)

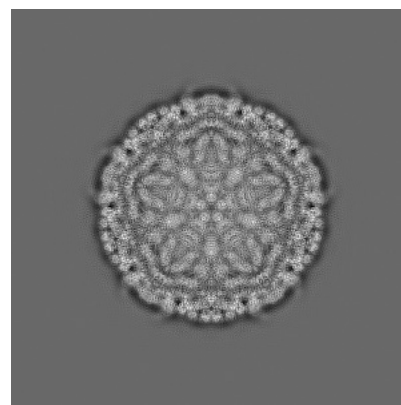
6.1.1 Primary map



X



Y

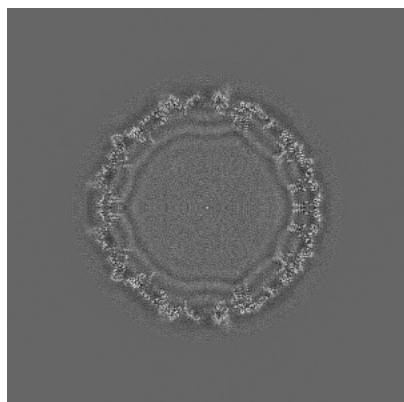


Z

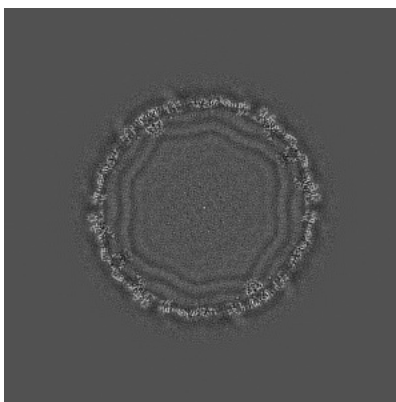
The images above show the map projected in three orthogonal directions.

6.2 Central slices [i](#)

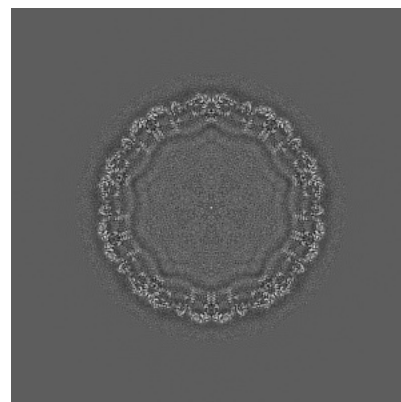
6.2.1 Primary map



X Index: 384



Y Index: 384

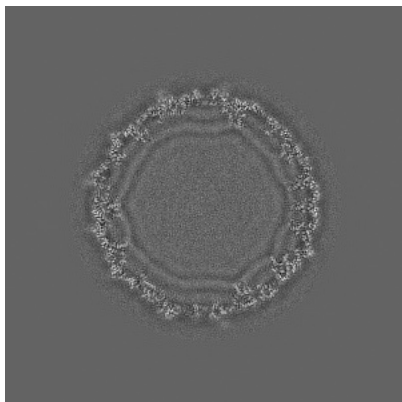


Z Index: 384

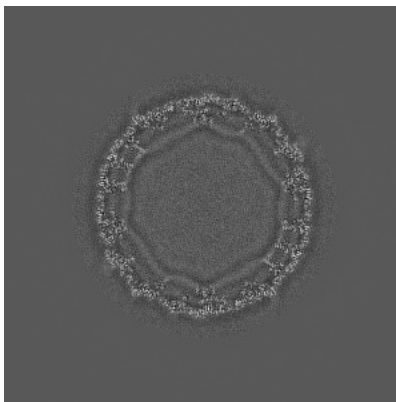
The images above show central slices of the map in three orthogonal directions.

6.3 Largest variance slices [i](#)

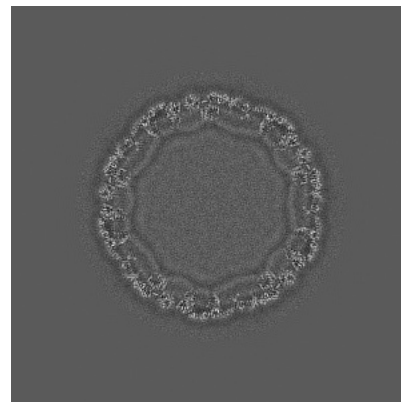
6.3.1 Primary map



X Index: 389



Y Index: 334

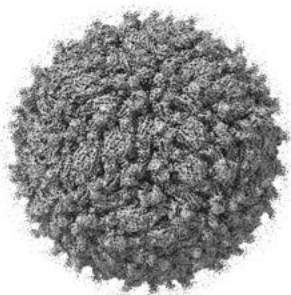


Z Index: 376

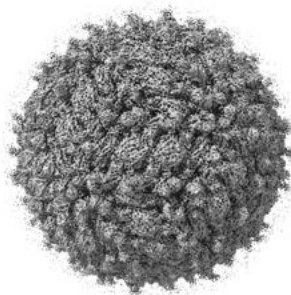
The images above show the largest variance slices of the map in three orthogonal directions.

6.4 Orthogonal surface views [i](#)

6.4.1 Primary map



X



Y



Z

The images above show the 3D surface view of the map at the recommended contour level 3.5. These images, in conjunction with the slice images, may facilitate assessment of whether an appropriate contour level has been provided.

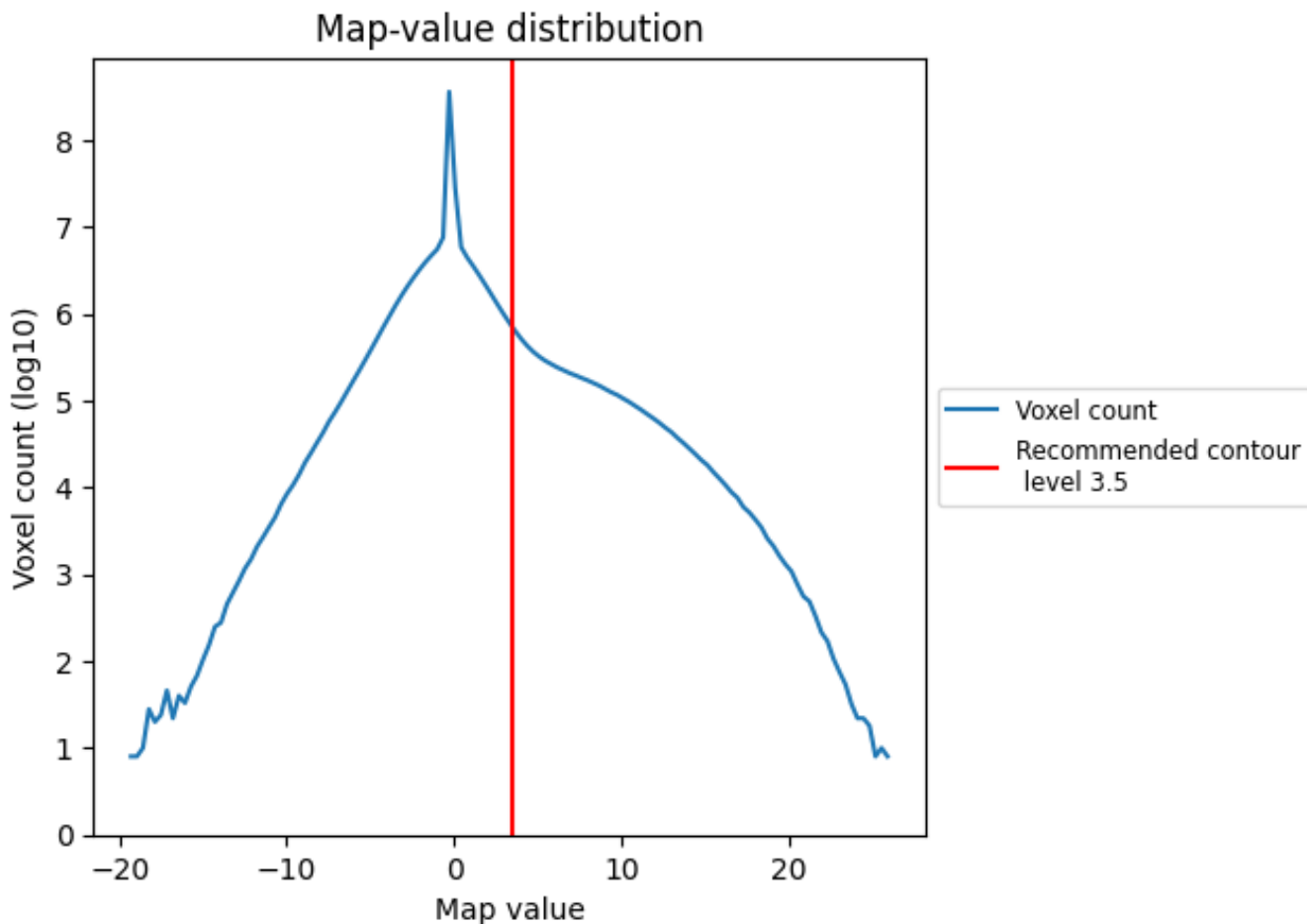
6.5 Mask visualisation

This section was not generated. No masks/segmentation were deposited.

7 Map analysis [i](#)

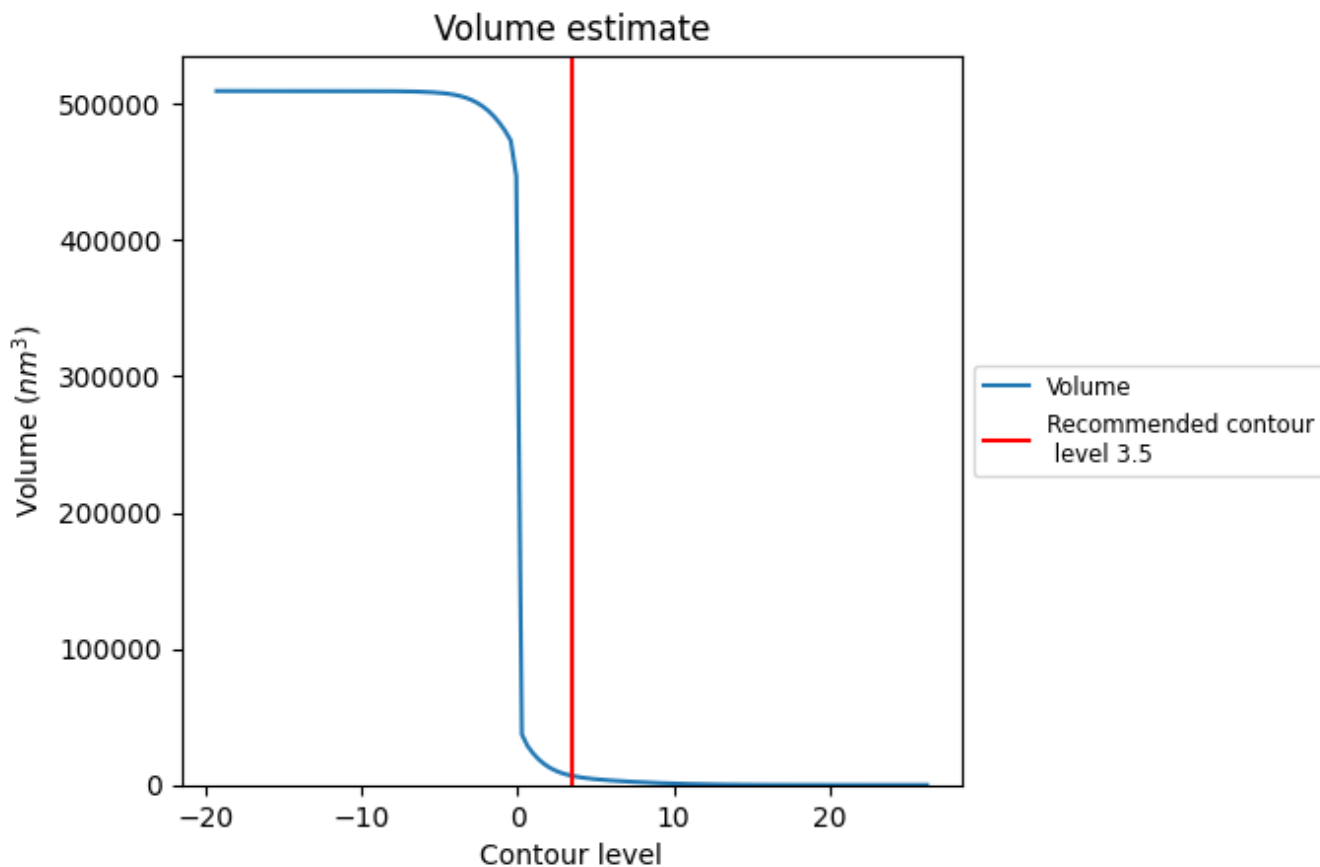
This section contains the results of statistical analysis of the map.

7.1 Map-value distribution [i](#)



The map-value distribution is plotted in 128 intervals along the x-axis. The y-axis is logarithmic. A spike in this graph at zero usually indicates that the volume has been masked.

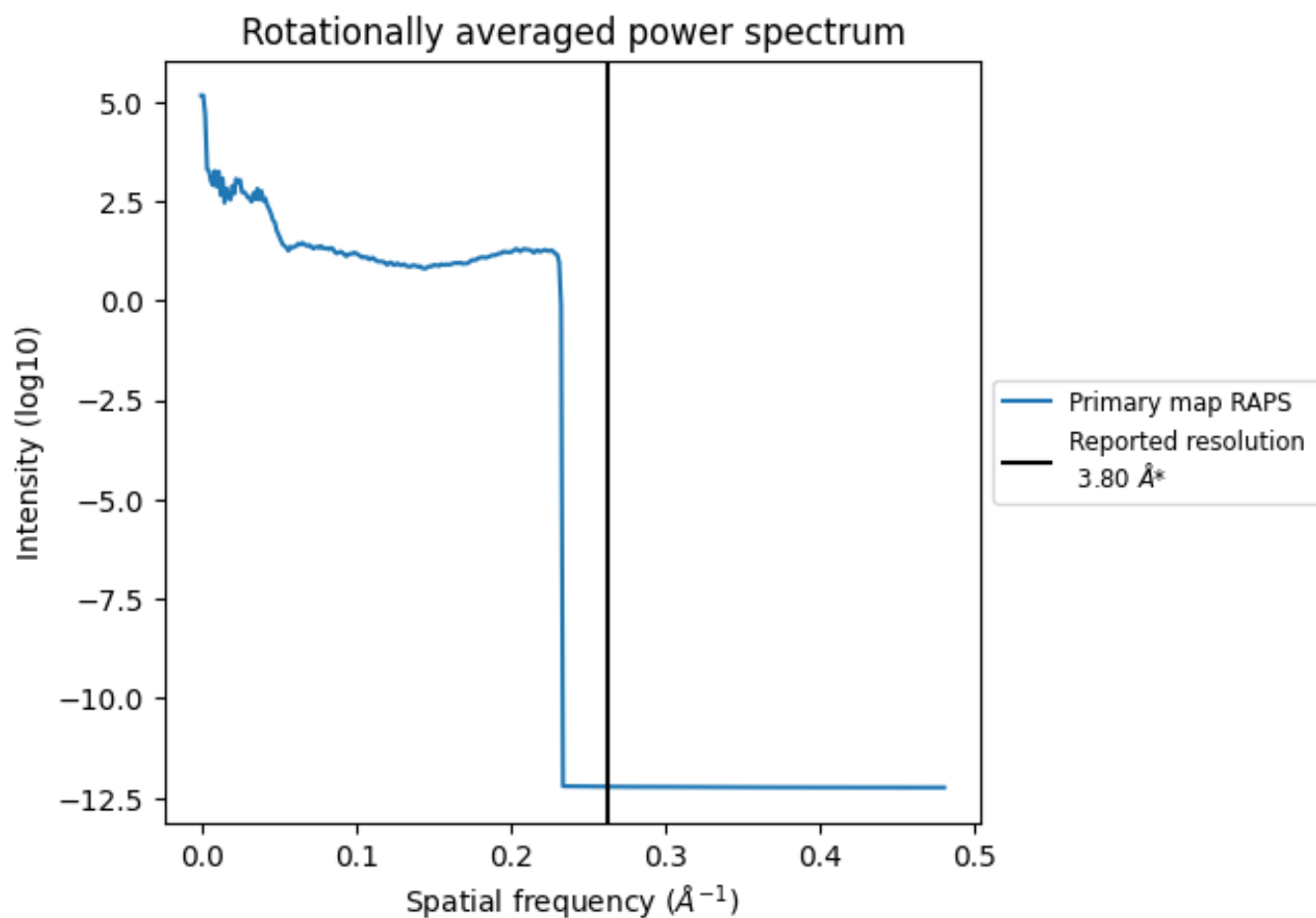
7.2 Volume estimate [i](#)



The volume at the recommended contour level is 6683 nm³; this corresponds to an approximate mass of 6037 kDa.

The volume estimate graph shows how the enclosed volume varies with the contour level. The recommended contour level is shown as a vertical line and the intersection between the line and the curve gives the volume of the enclosed surface at the given level.

7.3 Rotationally averaged power spectrum [i](#)

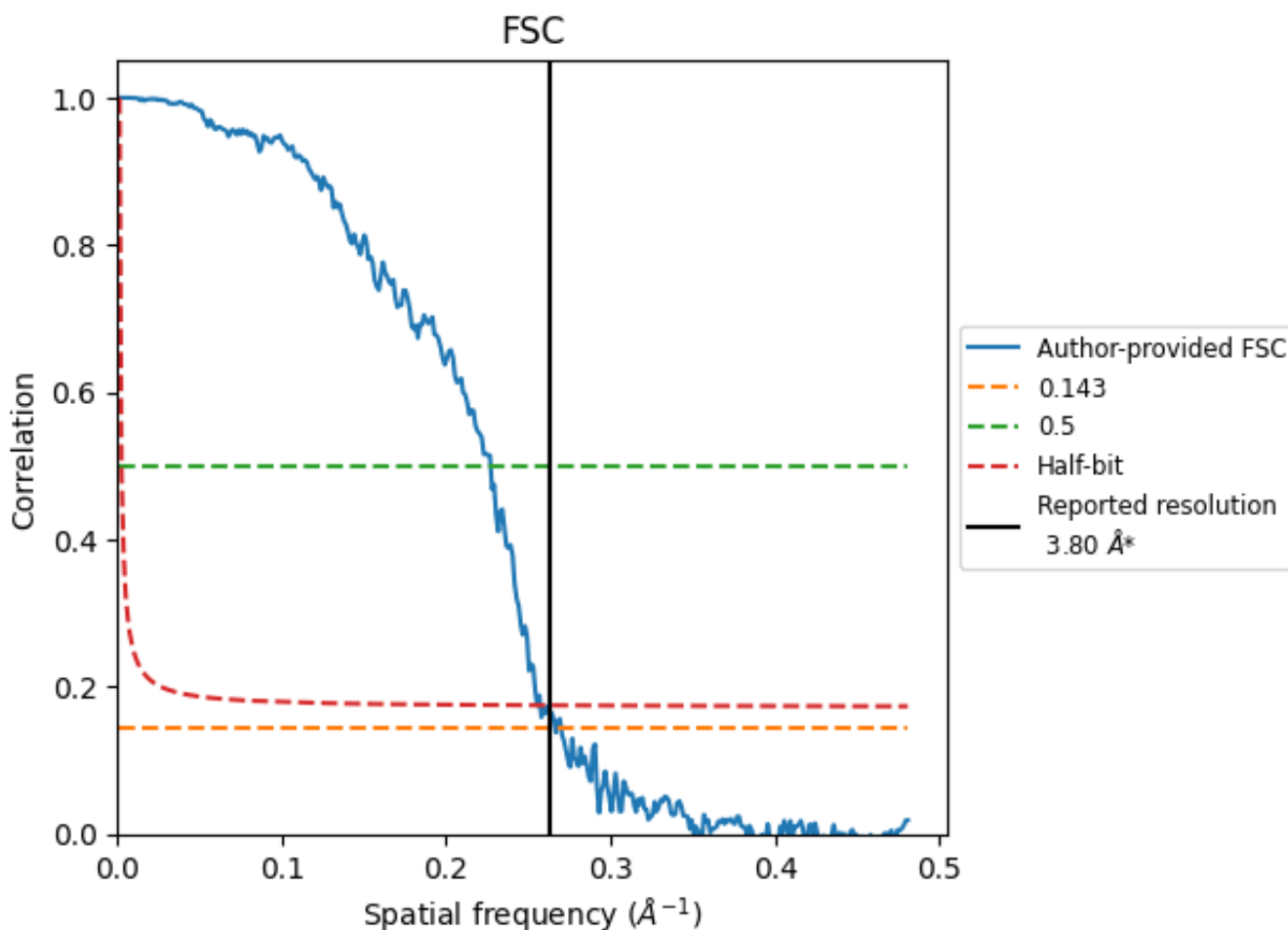


*Reported resolution corresponds to spatial frequency of 0.263\AA^{-1}

8 Fourier-Shell correlation [i](#)

Fourier-Shell Correlation (FSC) is the most commonly used method to estimate the resolution of single-particle and subtomogram-averaged maps. The shape of the curve depends on the imposed symmetry, mask and whether or not the two 3D reconstructions used were processed from a common reference. The reported resolution is shown as a black line. A curve is displayed for the half-bit criterion in addition to lines showing the 0.143 gold standard cut-off and 0.5 cut-off.

8.1 FSC [i](#)



*Reported resolution corresponds to spatial frequency of 0.263 Å⁻¹

8.2 Resolution estimates [i](#)

Resolution estimate (Å)	Estimation criterion (FSC cut-off)		
	0.143	0.5	Half-bit
Reported by author	3.80	-	-
Author-provided FSC curve	3.76	4.41	3.92
Unmasked-calculated*	-	-	-

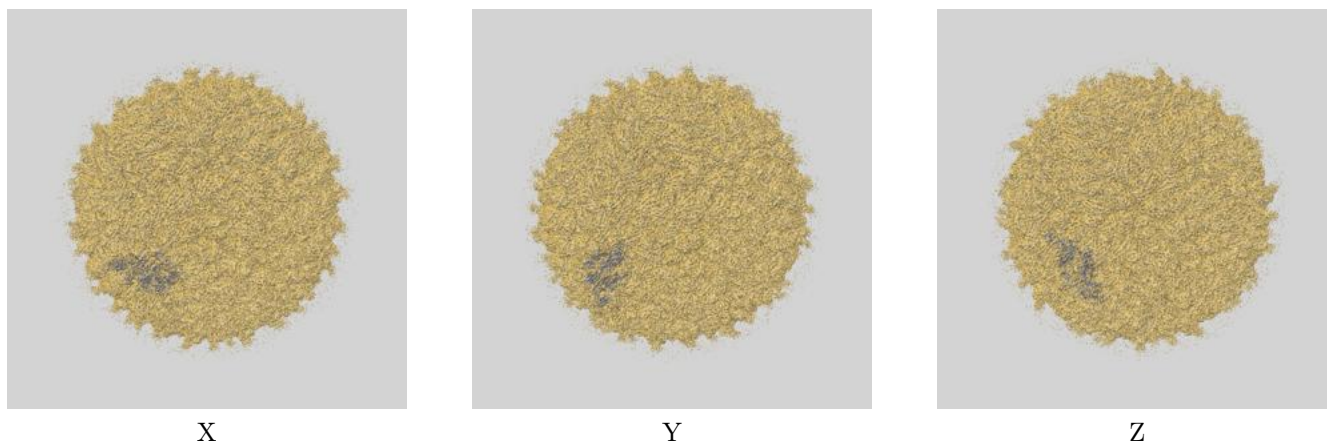
*Resolution estimate based on FSC curve calculated by comparison of deposited half-maps.

9 Map-model fit [i](#)

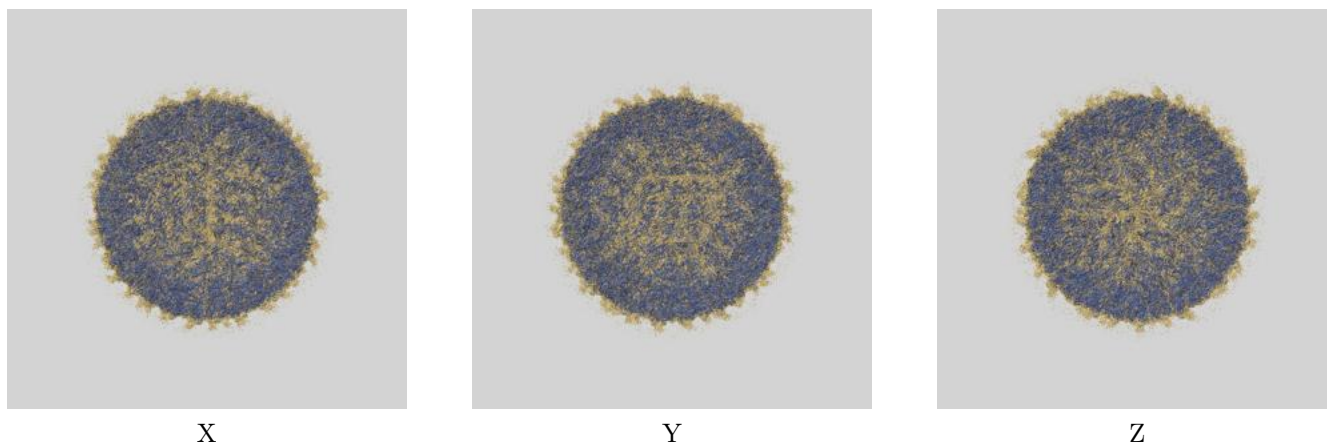
This section contains information regarding the fit between EMDB map EMD-8116 and PDB model 5IRE. Per-residue inclusion information can be found in section 3 on page 5.

9.1 Map-model overlays

9.1.1 Map-model overlay [i](#)

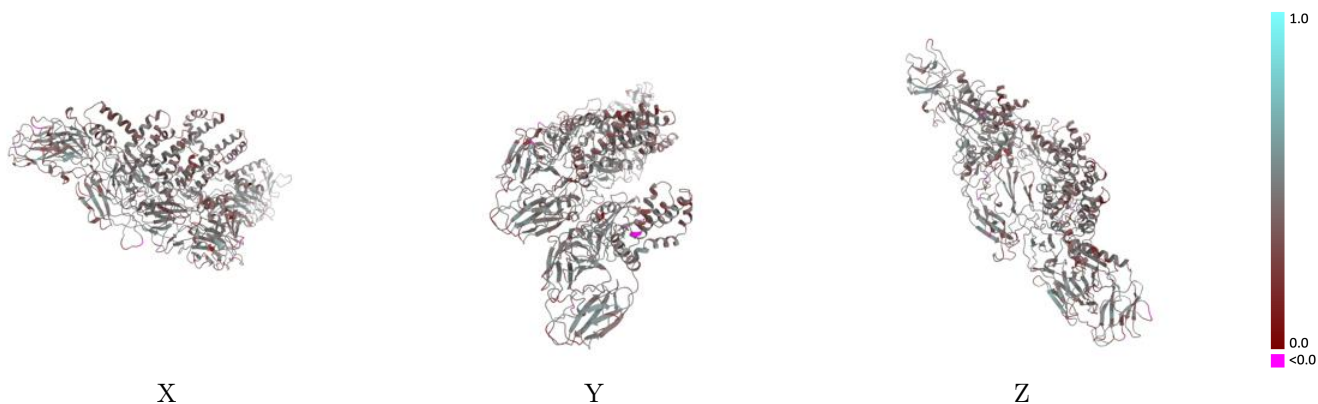


9.1.2 Map-model assembly overlay [i](#)



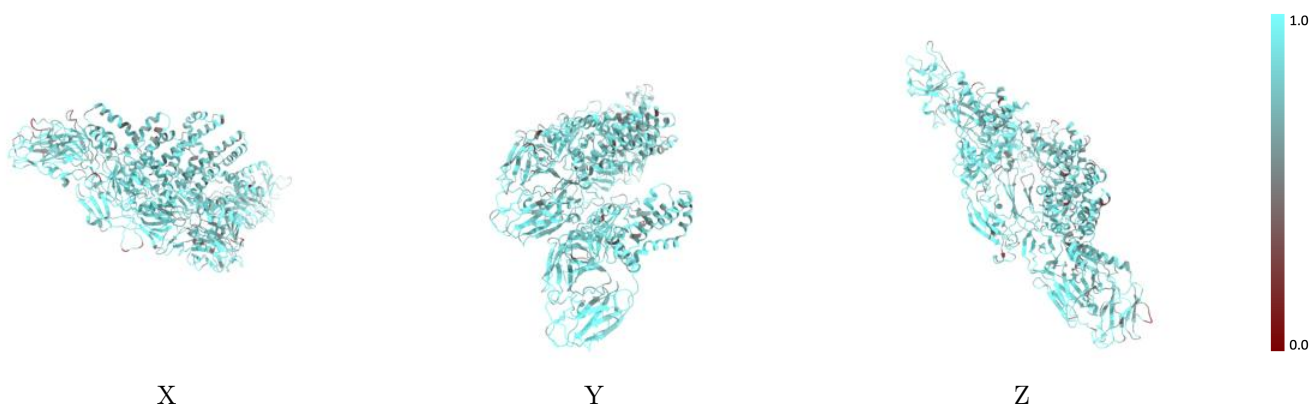
The images above show the 3D surface view of the map at the recommended contour level 3.5 at 50% transparency in yellow overlaid with a ribbon representation of the model coloured in blue. These images allow for the visual assessment of the quality of fit between the atomic model and the map.

9.2 Q-score mapped to coordinate model [i](#)



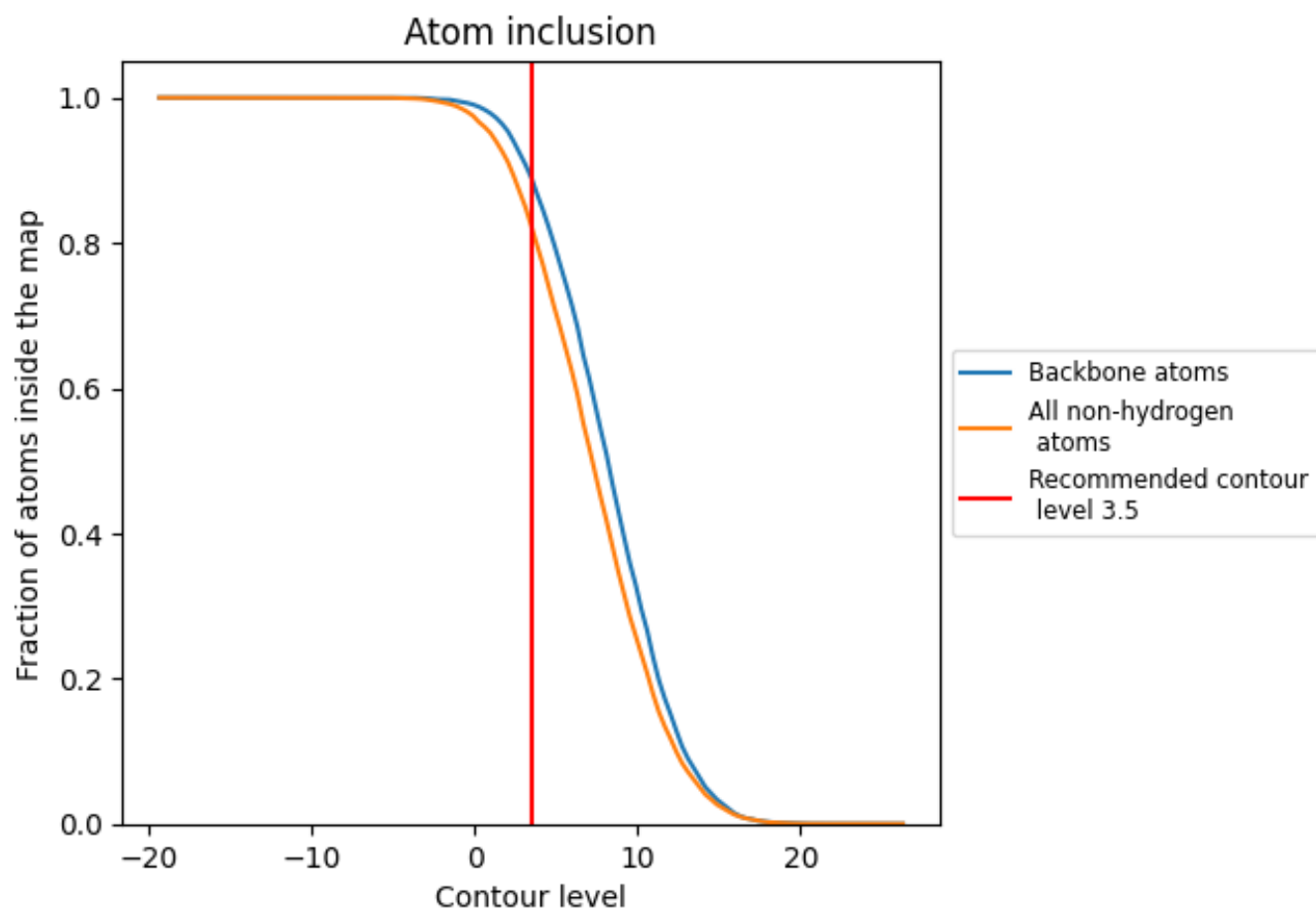
The images above show the model with each residue coloured according to its Q-score. This shows their resolvability in the map with higher Q-score values reflecting better resolvability. Please note: Q-score is calculating the resolvability of atoms, and thus high values are only expected at resolutions at which atoms can be resolved. Low Q-score values may therefore be expected for many entries.

9.3 Atom inclusion mapped to coordinate model [i](#)



The images above show the model with each residue coloured according to its atom inclusion. This shows to what extent they are inside the map at the recommended contour level (3.5).





















9.4 Atom inclusion [i](#)



At the recommended contour level, 89% of all backbone atoms, 82% of all non-hydrogen atoms, are inside the map.

9.5 Map-model fit summary

The table lists the average atom inclusion at the recommended contour level (3.5) and Q-score for the entire model and for each chain.

Chain	Atom inclusion	Q-score
All	 0.8223	 0.4250
A	 0.8503	 0.4380
B	 0.8156	 0.4210
C	 0.8129	 0.4250
D	 0.8022	 0.4100
E	 0.8184	 0.4210
F	 0.8027	 0.4170
G	 0.3571	 0.1480
H	 0.7500	 0.2500
I	 0.5000	 0.2300

