



Full wwPDB X-ray Structure Validation Report ⓘ

Sep 20, 2023 – 10:40 PM EDT

PDB ID : 5IWP
Title : Structure of Transient Receptor Potential (TRP) channel TRPV6 in the presence of calcium
Authors : Saotome, K.; Singh, A.K.; Yelshanskaya, M.V.; Sobolevsky, A.I.
Deposited on : 2016-03-22
Resolution : 3.65 Å(reported)

This is a Full wwPDB X-ray Structure Validation Report for a publicly released PDB entry.

We welcome your comments at validation@mail.wwpdb.org

A user guide is available at

<https://www.wwpdb.org/validation/2017/XrayValidationReportHelp>

with specific help available everywhere you see the ⓘ symbol.

The types of validation reports are described at

<http://www.wwpdb.org/validation/2017/FAQs#types>.

The following versions of software and data (see [references ⓘ](#)) were used in the production of this report:

MolProbity : 4.02b-467
Mogul : 1.8.5 (274361), CSD as541be (2020)
Xtriage (Phenix) : 1.13
EDS : 2.35.1
Percentile statistics : 20191225.v01 (using entries in the PDB archive December 25th 2019)
Refmac : 5.8.0158
CCP4 : 7.0.044 (Gargrove)
Ideal geometry (proteins) : Engh & Huber (2001)
Ideal geometry (DNA, RNA) : Parkinson et al. (1996)
Validation Pipeline (wwPDB-VP) : 2.35.1

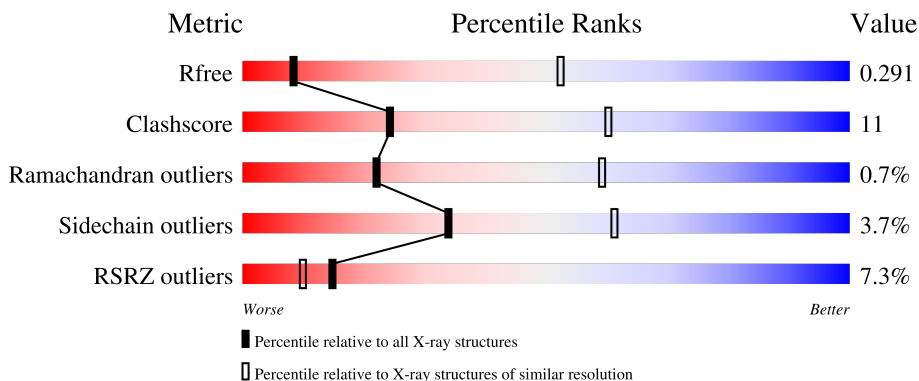
1 Overall quality at a glance

The following experimental techniques were used to determine the structure:

X-RAY DIFFRACTION

The reported resolution of this entry is 3.65 Å.

Percentile scores (ranging between 0-100) for global validation metrics of the entry are shown in the following graphic. The table shows the number of entries on which the scores are based.



Metric	Whole archive (#Entries)	Similar resolution (#Entries, resolution range(Å))
R_{free}	130704	1557 (3.82-3.50)
Clashscore	141614	1037 (3.80-3.52)
Ramachandran outliers	138981	1004 (3.80-3.52)
Sidechain outliers	138945	1002 (3.80-3.52)
RSRZ outliers	127900	1441 (3.82-3.50)

The table below summarises the geometric issues observed across the polymeric chains and their fit to the electron density. The red, orange, yellow and green segments of the lower bar indicate the fraction of residues that contain outliers for ≥ 3 , 2, 1 and 0 types of geometric quality criteria respectively. A grey segment represents the fraction of residues that are not modelled. The numeric value for each fraction is indicated below the corresponding segment, with a dot representing fractions $\leq 5\%$. The upper red bar (where present) indicates the fraction of residues that have poor fit to the electron density. The numeric value is given above the bar.

Mol	Chain	Length	Quality of chain
1	A	672	

2 Entry composition

There are 3 unique types of molecules in this entry. The entry contains 4735 atoms, of which 0 are hydrogens and 0 are deuteriums.

In the tables below, the ZeroOcc column contains the number of atoms modelled with zero occupancy, the AltConf column contains the number of residues with at least one atom in alternate conformation and the Trace column contains the number of residues modelled with at most 2 atoms.

- Molecule 1 is a protein called Transient receptor potential cation channel subfamily V member 6.

Mol	Chain	Residues	Atoms					ZeroOcc	AltConf	Trace
			Total	C	N	O	S			
1	A	591	4717	3049	792	844	32	0	0	0

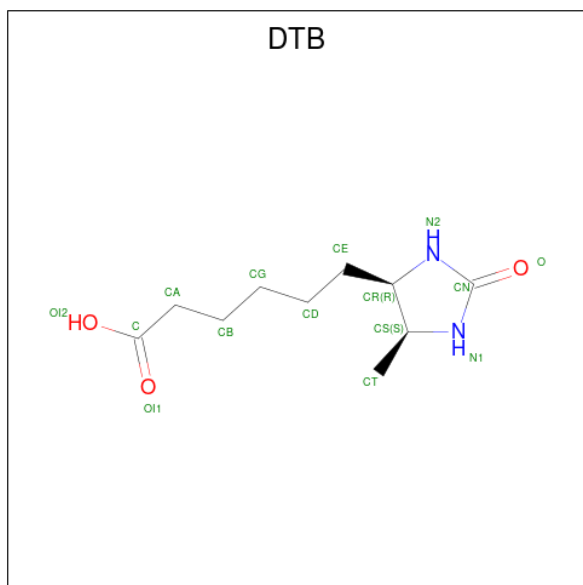
There are 7 discrepancies between the modelled and reference sequences:

Chain	Residue	Modelled	Actual	Comment	Reference
A	62	TYR	ILE	engineered mutation	UNP Q9R186
A	92	ASN	LEU	engineered mutation	UNP Q9R186
A	96	GLN	MET	engineered mutation	UNP Q9R186
A	495	GLN	LEU	engineered mutation	UNP Q9R186
A	670	VAL	-	expression tag	UNP Q9R186
A	671	PRO	-	expression tag	UNP Q9R186
A	672	ARG	-	expression tag	UNP Q9R186

- Molecule 2 is CALCIUM ION (three-letter code: CA) (formula: Ca).

Mol	Chain	Residues	Atoms		ZeroOcc	AltConf
2	A	3	Total	Ca	0	0
			3	3		

- Molecule 3 is 6-(5-METHYL-2-OXO-IMIDAZOLIDIN-4-YL)-HEXANOIC ACID (three-letter code: DTB) (formula: C₁₀H₁₈N₂O₃).

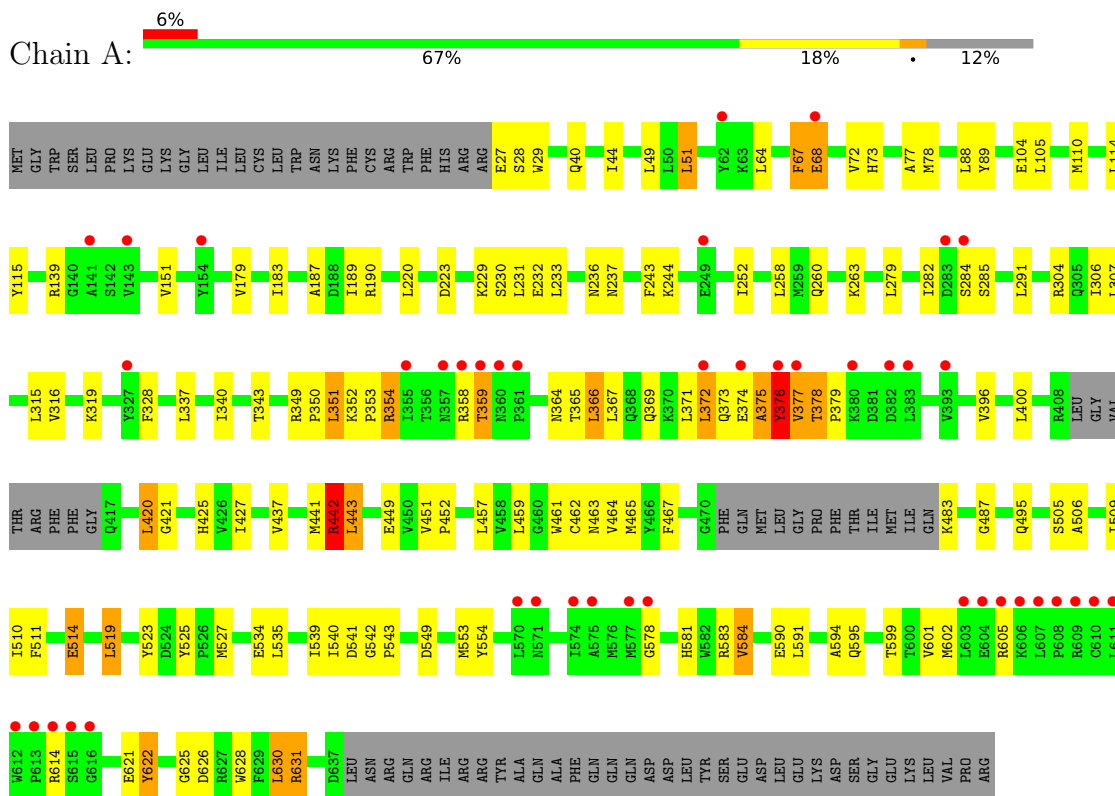


Mol	Chain	Residues	Atoms				ZeroOcc	AltConf
			Total	C	N	O		
3	A	1	15	10	2	3	0	0

3 Residue-property plots

These plots are drawn for all protein, RNA, DNA and oligosaccharide chains in the entry. The first graphic for a chain summarises the proportions of the various outlier classes displayed in the second graphic. The second graphic shows the sequence view annotated by issues in geometry and electron density. Residues are color-coded according to the number of geometric quality criteria for which they contain at least one outlier: green = 0, yellow = 1, orange = 2 and red = 3 or more. A red dot above a residue indicates a poor fit to the electron density ($RSRZ > 2$). Stretches of 2 or more consecutive residues without any outlier are shown as a green connector. Residues present in the sample, but not in the model, are shown in grey.

- Molecule 1: Transient receptor potential cation channel subfamily V member 6



4 Data and refinement statistics

Property	Value	Source
Space group	P 4 21 2	Depositor
Cell constants a, b, c, α , β , γ	144.35Å 144.35Å 113.37Å 90.00° 90.00° 90.00°	Depositor
Resolution (Å)	49.56 – 3.65 49.56 – 3.65	Depositor EDS
% Data completeness (in resolution range)	99.8 (49.56-3.65) 99.9 (49.56-3.65)	Depositor EDS
R_{merge}	0.01	Depositor
R_{sym}	(Not available)	Depositor
$\langle I/\sigma(I) \rangle$ ¹	1.88 (at 3.67Å)	Xtrriage
Refinement program	PHENIX 1.9_1692	Depositor
R, R_{free}	0.273 , 0.283 0.292 , 0.291	Depositor DCC
R_{free} test set	692 reflections (5.00%)	wwPDB-VP
Wilson B-factor (Å ²)	142.3	Xtrriage
Anisotropy	0.374	Xtrriage
Bulk solvent k_{sol} (e/Å ³), B_{sol} (Å ²)	0.30 , 110.1	EDS
L-test for twinning ²	$\langle L \rangle = 0.47$, $\langle L^2 \rangle = 0.30$	Xtrriage
Estimated twinning fraction	No twinning to report.	Xtrriage
F_o, F_c correlation	0.83	EDS
Total number of atoms	4735	wwPDB-VP
Average B, all atoms (Å ²)	138.0	wwPDB-VP

Xtrriage's analysis on translational NCS is as follows: *The largest off-origin peak in the Patterson function is 3.05% of the height of the origin peak. No significant pseudotranslation is detected.*

¹Intensities estimated from amplitudes.

²Theoretical values of $\langle |L| \rangle$, $\langle L^2 \rangle$ for acentric reflections are 0.5, 0.333 respectively for untwinned datasets, and 0.375, 0.2 for perfectly twinned datasets.

5 Model quality [i](#)

5.1 Standard geometry [i](#)

Bond lengths and bond angles in the following residue types are not validated in this section: DTB, CA

The Z score for a bond length (or angle) is the number of standard deviations the observed value is removed from the expected value. A bond length (or angle) with $|Z| > 5$ is considered an outlier worth inspection. RMSZ is the root-mean-square of all Z scores of the bond lengths (or angles).

Mol	Chain	Bond lengths		Bond angles	
		RMSZ	# Z >5	RMSZ	# Z >5
1	A	0.28	1/4824 (0.0%)	0.57	12/6553 (0.2%)

Chiral center outliers are detected by calculating the chiral volume of a chiral center and verifying if the center is modelled as a planar moiety or with the opposite hand. A planarity outlier is detected by checking planarity of atoms in a peptide group, atoms in a mainchain group or atoms of a sidechain that are expected to be planar.

Mol	Chain	#Chirality outliers	#Planarity outliers
1	A	0	1

All (1) bond length outliers are listed below:

Mol	Chain	Res	Type	Atoms	Z	Observed(Å)	Ideal(Å)
1	A	372	LEU	CA-C	-5.13	1.39	1.52

All (12) bond angle outliers are listed below:

Mol	Chain	Res	Type	Atoms	Z	Observed(°)	Ideal(°)
1	A	68	GLU	N-CA-C	-8.86	87.09	111.00
1	A	359	THR	N-CA-CB	8.40	126.26	110.30
1	A	67	PHE	N-CA-C	-7.78	90.01	111.00
1	A	359	THR	N-CA-C	-6.99	92.12	111.00
1	A	67	PHE	CB-CA-C	6.85	124.11	110.40
1	A	375	ALA	N-CA-C	-6.79	92.65	111.00
1	A	442	ARG	NE-CZ-NH2	-6.71	116.95	120.30
1	A	68	GLU	N-CA-CB	6.65	122.57	110.60
1	A	378	THR	N-CA-CB	-6.63	97.70	110.30
1	A	378	THR	N-CA-C	6.54	128.66	111.00
1	A	358	ARG	CB-CA-C	-5.22	99.96	110.40
1	A	584	VAL	CB-CA-C	-5.08	101.76	111.40

There are no chirality outliers.

All (1) planarity outliers are listed below:

Mol	Chain	Res	Type	Group
1	A	351	LEU	Peptide

5.2 Too-close contacts

In the following table, the Non-H and H(model) columns list the number of non-hydrogen atoms and hydrogen atoms in the chain respectively. The H(added) column lists the number of hydrogen atoms added and optimized by MolProbity. The Clashes column lists the number of clashes within the asymmetric unit, whereas Symm-Clashes lists symmetry-related clashes.

Mol	Chain	Non-H	H(model)	H(added)	Clashes	Symm-Clashes
1	A	4717	0	4734	102	0
2	A	3	0	0	0	0
3	A	15	0	17	4	0
All	All	4735	0	4751	104	0

The all-atom clashscore is defined as the number of clashes found per 1000 atoms (including hydrogen atoms). The all-atom clashscore for this structure is 11.

All (104) close contacts within the same asymmetric unit are listed below, sorted by their clash magnitude.

Atom-1	Atom-2	Interatomic distance (Å)	Clash overlap (Å)
1:A:376:TYR:O	1:A:377:VAL:HG22	1.41	1.19
1:A:375:ALA:HA	1:A:376:TYR:O	1.68	0.92
1:A:376:TYR:O	1:A:377:VAL:CG2	2.25	0.81
1:A:315:LEU:O	1:A:315:LEU:HD12	1.81	0.80
1:A:578:GLY:HA2	1:A:581:HIS:HD2	1.49	0.78
1:A:114:LEU:O	1:A:151:VAL:HG22	1.93	0.68
1:A:351:LEU:HB3	1:A:352:LYS:HA	1.75	0.67
1:A:578:GLY:HA2	1:A:581:HIS:CD2	2.30	0.65
1:A:115:TYR:CE1	3:A:704:DTB:HCR	2.32	0.65
1:A:375:ALA:HA	1:A:376:TYR:C	2.18	0.64
1:A:420:LEU:H	1:A:421:GLY:HA3	1.60	0.64
1:A:366:LEU:HD12	1:A:366:LEU:H	1.63	0.63
1:A:183:ILE:HD13	1:A:187:ALA:HB3	1.81	0.63
1:A:519:LEU:HD11	1:A:543:PRO:HB3	1.83	0.61
1:A:354:ARG:NE	1:A:367:LEU:O	2.34	0.60
1:A:373:GLN:HB2	1:A:375:ALA:HB3	1.83	0.60
1:A:365:THR:HG22	1:A:367:LEU:H	1.67	0.59

Continued on next page...

Continued from previous page...

Atom-1	Atom-2	Interatomic distance (Å)	Clash overlap (Å)
1:A:378:THR:HG23	1:A:378:THR:O	2.04	0.58
1:A:599:THR:HG23	1:A:602:MET:HE2	1.86	0.58
1:A:543:PRO:O	1:A:554:TYR:OH	2.15	0.57
1:A:505:SER:HG	1:A:525:TYR:HH	1.53	0.57
1:A:540:ILE:HG22	1:A:542:GLY:H	1.71	0.56
1:A:190:ARG:NH2	1:A:229:LYS:O	2.41	0.54
3:A:704:DTB:HCD1	3:A:704:DTB:HCT2	1.91	0.53
1:A:243:PHE:HA	1:A:258:LEU:HD13	1.90	0.52
1:A:367:LEU:HB3	1:A:369:GLN:HG3	1.91	0.52
1:A:115:TYR:CZ	3:A:704:DTB:HCR	2.45	0.52
1:A:343:THR:HG21	1:A:461:TRP:HE1	1.74	0.52
1:A:590:GLU:O	1:A:594:ALA:N	2.32	0.51
1:A:364:ASN:ND2	1:A:549:ASP:OD1	2.37	0.51
1:A:437:VAL:O	1:A:441:MET:N	2.39	0.51
1:A:282:ILE:HG23	1:A:291:LEU:HD23	1.93	0.51
1:A:506:ALA:O	1:A:510:ILE:HG12	2.10	0.50
1:A:584:VAL:HG22	1:A:584:VAL:O	2.10	0.50
1:A:284:SER:HB2	1:A:285:SER:HB2	1.94	0.50
1:A:72:VAL:HG22	1:A:105:LEU:HD11	1.94	0.49
1:A:351:LEU:CB	1:A:352:LYS:HA	2.40	0.49
1:A:591:LEU:O	1:A:595:GLN:HG3	2.12	0.49
1:A:190:ARG:HD2	1:A:231:LEU:HD13	1.93	0.49
1:A:443:LEU:HD12	1:A:443:LEU:O	2.12	0.49
1:A:230:SER:HB3	1:A:233:LEU:HD23	1.94	0.49
1:A:315:LEU:HD12	1:A:315:LEU:C	2.32	0.49
1:A:630:LEU:HD12	1:A:631:ARG:N	2.28	0.49
1:A:304:ARG:O	1:A:307:LEU:HG	2.13	0.49
1:A:425:HIS:NE2	1:A:602:MET:SD	2.74	0.48
1:A:442:ARG:O	1:A:443:LEU:HB3	2.13	0.48
1:A:40:GLN:O	1:A:44:ILE:HG12	2.14	0.48
1:A:73:HIS:HE2	1:A:104:GLU:HG3	1.80	0.47
1:A:316:VAL:HA	1:A:319:LYS:HD3	1.96	0.47
1:A:337:LEU:HA	1:A:340:ILE:HG22	1.97	0.47
1:A:451:VAL:HG13	1:A:553:MET:SD	2.54	0.47
1:A:28:SER:OG	1:A:29:TRP:N	2.48	0.46
1:A:441:MET:CE	1:A:452:PRO:HG3	2.45	0.46
1:A:461:TRP:O	1:A:464:VAL:HB	2.15	0.46
1:A:343:THR:HG22	1:A:457:LEU:HD22	1.98	0.46
1:A:372:LEU:HB2	1:A:373:GLN:HA	1.97	0.46
1:A:115:TYR:CE1	1:A:151:VAL:HG21	2.51	0.46
1:A:236:ASN:OD1	1:A:237:ASN:N	2.47	0.46

Continued on next page...

Continued from previous page...

Atom-1	Atom-2	Interatomic distance (Å)	Clash overlap (Å)
1:A:67:PHE:HA	1:A:68:GLU:HA	1.77	0.46
1:A:88:LEU:HD23	1:A:89:TYR:CE1	2.51	0.46
1:A:505:SER:O	1:A:509:ILE:HG12	2.16	0.46
1:A:315:LEU:CD1	1:A:319:LYS:HD2	2.47	0.45
1:A:51:LEU:HD12	1:A:51:LEU:O	2.17	0.45
1:A:73:HIS:NE2	1:A:104:GLU:HG3	2.32	0.44
1:A:220:LEU:HD21	1:A:232:GLU:HG3	2.00	0.44
1:A:352:LYS:HB2	1:A:353:PRO:HD2	1.98	0.44
1:A:373:GLN:HB2	1:A:375:ALA:N	2.33	0.44
1:A:625:GLY:HA2	1:A:626:ASP:HA	1.63	0.44
1:A:441:MET:HE2	1:A:452:PRO:HG3	2.00	0.43
1:A:291:LEU:HD12	1:A:291:LEU:O	2.17	0.43
1:A:315:LEU:HD11	1:A:319:LYS:HD2	2.00	0.43
1:A:350:PRO:HG2	1:A:442:ARG:HH12	1.82	0.43
1:A:483:LYS:O	1:A:487:GLY:N	2.50	0.43
1:A:523:TYR:CE1	1:A:527:MET:HG2	2.54	0.43
1:A:27:GLU:HA	1:A:28:SER:HA	1.73	0.43
1:A:534:GLU:HB3	1:A:539:ILE:CG2	2.49	0.43
1:A:614:ARG:HD3	1:A:628:TRP:CE2	2.54	0.43
1:A:64:LEU:O	1:A:68:GLU:O	2.36	0.42
1:A:427:ILE:HG23	1:A:459:LEU:HG	2.00	0.42
1:A:621:GLU:N	1:A:622:TYR:O	2.52	0.42
1:A:252:ILE:HD13	1:A:306:ILE:HD13	2.01	0.42
1:A:244:LYS:HE3	1:A:244:LYS:HB2	1.74	0.42
1:A:459:LEU:O	1:A:463:ASN:HB2	2.20	0.42
1:A:601:VAL:O	1:A:605:ARG:HG3	2.19	0.42
1:A:49:LEU:HD12	1:A:49:LEU:O	2.20	0.42
1:A:539:ILE:HG23	1:A:540:ILE:N	2.33	0.42
1:A:465:MET:SD	1:A:495:GLN:HG2	2.59	0.42
1:A:40:GLN:HA	1:A:77:ALA:HB3	2.01	0.42
1:A:315:LEU:O	1:A:319:LYS:HG3	2.19	0.42
3:A:704:DTB:HCT2	3:A:704:DTB:CD	2.50	0.41
1:A:462:CYS:O	1:A:465:MET:HG2	2.20	0.41
1:A:179:VAL:O	1:A:183:ILE:HG12	2.20	0.41
1:A:328:PHE:CZ	1:A:467:PHE:HA	2.55	0.41
1:A:366:LEU:HD12	1:A:366:LEU:N	2.31	0.41
1:A:396:VAL:O	1:A:400:LEU:N	2.51	0.41
1:A:543:PRO:HB2	1:A:554:TYR:CZ	2.55	0.41
1:A:189:ILE:HD11	1:A:223:ASP:HA	2.02	0.41
1:A:260:GLN:HA	1:A:263:LYS:HE3	2.03	0.41
1:A:366:LEU:HD13	1:A:514:GLU:HB3	2.03	0.41

Continued on next page...

Continued from previous page...

Atom-1	Atom-2	Interatomic distance (Å)	Clash overlap (Å)
1:A:511:PHE:HA	1:A:514:GLU:HG2	2.02	0.41
1:A:110:MET:HB2	1:A:115:TYR:O	2.21	0.40
1:A:373:GLN:HA	1:A:374:GLU:HB2	2.03	0.40
1:A:535:LEU:CD2	1:A:542:GLY:HA2	2.51	0.40
1:A:441:MET:HG2	1:A:449:GLU:HA	2.03	0.40

There are no symmetry-related clashes.

5.3 Torsion angles [i](#)

5.3.1 Protein backbone [i](#)

In the following table, the Percentiles column shows the percent Ramachandran outliers of the chain as a percentile score with respect to all X-ray entries followed by that with respect to entries of similar resolution.

The Analysed column shows the number of residues for which the backbone conformation was analysed, and the total number of residues.

Mol	Chain	Analysed	Favoured	Allowed	Outliers	Percentiles
1	A	585/672 (87%)	537 (92%)	44 (8%)	4 (1%)	22 59

All (4) Ramachandran outliers are listed below:

Mol	Chain	Res	Type
1	A	376	TYR
1	A	377	VAL
1	A	379	PRO
1	A	583	ARG

5.3.2 Protein sidechains [i](#)

In the following table, the Percentiles column shows the percent sidechain outliers of the chain as a percentile score with respect to all X-ray entries followed by that with respect to entries of similar resolution.

The Analysed column shows the number of residues for which the sidechain conformation was analysed, and the total number of residues.

Mol	Chain	Analysed	Rotameric	Outliers	Percentiles
1	A	508/584 (87%)	489 (96%)	19 (4%)	34 61

All (19) residues with a non-rotameric sidechain are listed below:

Mol	Chain	Res	Type
1	A	51	LEU
1	A	78	MET
1	A	139	ARG
1	A	279	LEU
1	A	349	ARG
1	A	354	ARG
1	A	359	THR
1	A	366	LEU
1	A	371	LEU
1	A	376	TYR
1	A	420	LEU
1	A	442	ARG
1	A	443	LEU
1	A	514	GLU
1	A	519	LEU
1	A	541	ASP
1	A	622	TYR
1	A	630	LEU
1	A	631	ARG

Sometimes sidechains can be flipped to improve hydrogen bonding and reduce clashes. There are no such sidechains identified.

5.3.3 RNA [i](#)

There are no RNA molecules in this entry.

5.4 Non-standard residues in protein, DNA, RNA chains [i](#)

There are no non-standard protein/DNA/RNA residues in this entry.

5.5 Carbohydrates [i](#)

There are no monosaccharides in this entry.

5.6 Ligand geometry

Of 4 ligands modelled in this entry, 3 are monoatomic - leaving 1 for Mogul analysis.

In the following table, the Counts columns list the number of bonds (or angles) for which Mogul statistics could be retrieved, the number of bonds (or angles) that are observed in the model and the number of bonds (or angles) that are defined in the Chemical Component Dictionary. The Link column lists molecule types, if any, to which the group is linked. The Z score for a bond length (or angle) is the number of standard deviations the observed value is removed from the expected value. A bond length (or angle) with $|Z| > 2$ is considered an outlier worth inspection. RMSZ is the root-mean-square of all Z scores of the bond lengths (or angles).

Mol	Type	Chain	Res	Link	Bond lengths			Bond angles		
					Counts	RMSZ	# Z > 2	Counts	RMSZ	# Z > 2
3	DTB	A	704	-	15,15,15	2.77	5 (33%)	16,19,19	2.34	6 (37%)

In the following table, the Chirals column lists the number of chiral outliers, the number of chiral centers analysed, the number of these observed in the model and the number defined in the Chemical Component Dictionary. Similar counts are reported in the Torsion and Rings columns. '-' means no outliers of that kind were identified.

Mol	Type	Chain	Res	Link	Chirals	Torsions	Rings
3	DTB	A	704	-	-	4/8/20/20	0/1/1/1

All (5) bond length outliers are listed below:

Mol	Chain	Res	Type	Atoms	Z	Observed(Å)	Ideal(Å)
3	A	704	DTB	CN-N2	7.20	1.47	1.35
3	A	704	DTB	CN-N1	6.35	1.45	1.35
3	A	704	DTB	CS-N1	-3.00	1.43	1.46
3	A	704	DTB	CR-N2	-2.34	1.42	1.46
3	A	704	DTB	OI2-C	-2.05	1.23	1.30

All (6) bond angle outliers are listed below:

Mol	Chain	Res	Type	Atoms	Z	Observed(°)	Ideal(°)
3	A	704	DTB	CS-CR-N2	4.39	107.66	102.17
3	A	704	DTB	CR-CS-N1	4.32	107.69	102.43
3	A	704	DTB	CS-N1-CN	-3.69	108.33	112.42
3	A	704	DTB	CR-N2-CN	-3.23	108.25	112.46
3	A	704	DTB	CT-CS-N1	-2.75	108.42	111.70
3	A	704	DTB	CD-CE-CR	-2.08	109.68	113.93

There are no chirality outliers.

All (4) torsion outliers are listed below:

Mol	Chain	Res	Type	Atoms
3	A	704	DTB	CD-CE-CR-N2
3	A	704	DTB	CG-CD-CE-CR
3	A	704	DTB	OI2-C-CA-CB
3	A	704	DTB	OI1-C-CA-CB

There are no ring outliers.

1 monomer is involved in 4 short contacts:

Mol	Chain	Res	Type	Clashes	Symm-Clashes
3	A	704	DTB	4	0

5.7 Other polymers [i](#)

There are no such residues in this entry.

5.8 Polymer linkage issues [i](#)

There are no chain breaks in this entry.

6 Fit of model and data

6.1 Protein, DNA and RNA chains

In the following table, the column labelled ‘#RSRZ> 2’ contains the number (and percentage) of RSRZ outliers, followed by percent RSRZ outliers for the chain as percentile scores relative to all X-ray entries and entries of similar resolution. The OWAB column contains the minimum, median, 95th percentile and maximum values of the occupancy-weighted average B-factor per residue. The column labelled ‘Q< 0.9’ lists the number of (and percentage) of residues with an average occupancy less than 0.9.

Mol	Chain	Analysed	<RSRZ>	#RSRZ>2	OWAB(Å ²)	Q<0.9
1	A	591/672 (87%)	0.21	43 (7%) 15 10	80, 131, 187, 213	0

All (43) RSRZ outliers are listed below:

Mol	Chain	Res	Type	RSRZ
1	A	360	ASN	5.1
1	A	578	GLY	5.1
1	A	607	LEU	4.7
1	A	358	ARG	4.5
1	A	374	GLU	4.4
1	A	355	ILE	4.4
1	A	361	PRO	4.2
1	A	609	ARG	4.2
1	A	577	MET	4.0
1	A	606	LYS	4.0
1	A	610	CYS	3.9
1	A	608	PRO	3.8
1	A	615	SER	3.6
1	A	284	SER	3.6
1	A	575	ALA	3.5
1	A	377	VAL	3.5
1	A	605	ARG	3.4
1	A	249	GLU	3.3
1	A	614	ARG	3.2
1	A	571	ASN	3.1
1	A	603	LEU	3.1
1	A	612	TRP	3.0
1	A	359	THR	3.0
1	A	68	GLU	2.8
1	A	574	ILE	2.8
1	A	382	ASP	2.8
1	A	611	LEU	2.7

Continued on next page...

Continued from previous page...

Mol	Chain	Res	Type	RSRZ
1	A	141	ALA	2.7
1	A	283	ASP	2.5
1	A	154	TYR	2.5
1	A	613	PRO	2.5
1	A	570	LEU	2.4
1	A	383	LEU	2.4
1	A	62	TYR	2.4
1	A	376	TYR	2.3
1	A	372	LEU	2.3
1	A	143	VAL	2.3
1	A	380	LYS	2.3
1	A	616	GLY	2.2
1	A	327	TYR	2.2
1	A	393	VAL	2.1
1	A	357	ASN	2.1
1	A	604	GLU	2.1

6.2 Non-standard residues in protein, DNA, RNA chains [i](#)

There are no non-standard protein/DNA/RNA residues in this entry.

6.3 Carbohydrates [i](#)

There are no monosaccharides in this entry.

6.4 Ligands [i](#)

In the following table, the Atoms column lists the number of modelled atoms in the group and the number defined in the chemical component dictionary. The B-factors column lists the minimum, median, 95th percentile and maximum values of B factors of atoms in the group. The column labelled 'Q< 0.9' lists the number of atoms with occupancy less than 0.9.

Mol	Type	Chain	Res	Atoms	RSCC	RSR	B-factors(Å ²)	Q<0.9
2	CA	A	702	1/1	0.78	0.32	25,25,25,25	1
3	DTB	A	704	15/15	0.81	0.38	77,77,77,77	0
2	CA	A	701	1/1	0.91	0.22	25,25,25,25	1
2	CA	A	703	1/1	0.97	0.31	25,25,25,25	1

6.5 Other polymers [i](#)

There are no such residues in this entry.