



Full wwPDB X-ray Structure Validation Report ⓘ

Nov 22, 2023 – 08:44 PM JST

PDB ID : 6IW7
Title : structural insights into Mycobacterium tuberculosis ClpP1P2 inhibition by Cediranib: implications for developing antimicrobial agents targeting Clp protease
Authors : Bao, R.; Luo, Y.F.; Zhu, Y.B.; Yang, Y.; Zhou, Y.Z.
Deposited on : 2018-12-04
Resolution : 2.69 Å(reported)

This is a Full wwPDB X-ray Structure Validation Report for a publicly released PDB entry.

We welcome your comments at validation@mail.wwpdb.org

A user guide is available at

<https://www.wwpdb.org/validation/2017/XrayValidationReportHelp>

with specific help available everywhere you see the ⓘ symbol.

The types of validation reports are described at

<http://www.wwpdb.org/validation/2017/FAQs#types>.

The following versions of software and data (see [references ⓘ](#)) were used in the production of this report:

MolProbity : 4.02b-467
Mogul : 1.8.5 (274361), CSD as541be (2020)
Xtrriage (Phenix) : 1.13
EDS : 2.36
buster-report : 1.1.7 (2018)
Percentile statistics : 20191225.v01 (using entries in the PDB archive December 25th 2019)
Refmac : 5.8.0158
CCP4 : 7.0.044 (Gargrove)
Ideal geometry (proteins) : Engh & Huber (2001)
Ideal geometry (DNA, RNA) : Parkinson et al. (1996)
Validation Pipeline (wwPDB-VP) : 2.36

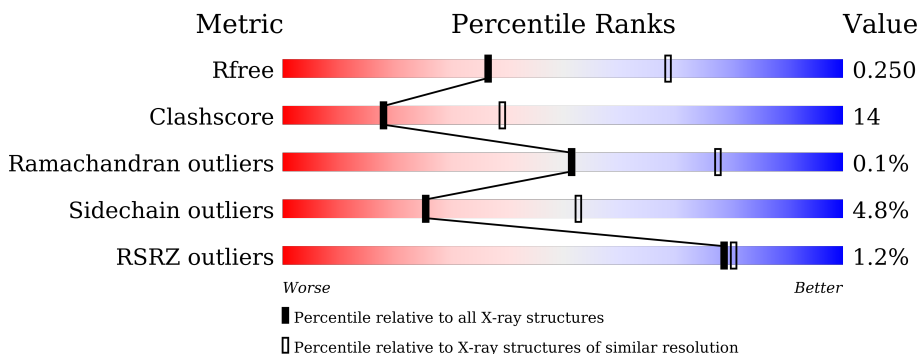
1 Overall quality at a glance

The following experimental techniques were used to determine the structure:

X-RAY DIFFRACTION

The reported resolution of this entry is 2.69 Å.

Percentile scores (ranging between 0-100) for global validation metrics of the entry are shown in the following graphic. The table shows the number of entries on which the scores are based.



Metric	Whole archive (#Entries)	Similar resolution (#Entries, resolution range(Å))
R_{free}	130704	2808 (2.70-2.70)
Clashscore	141614	3122 (2.70-2.70)
Ramachandran outliers	138981	3069 (2.70-2.70)
Sidechain outliers	138945	3069 (2.70-2.70)
RSRZ outliers	127900	2737 (2.70-2.70)

The table below summarises the geometric issues observed across the polymeric chains and their fit to the electron density. The red, orange, yellow and green segments of the lower bar indicate the fraction of residues that contain outliers for ≥ 3 , 2, 1 and 0 types of geometric quality criteria respectively. A grey segment represents the fraction of residues that are not modelled. The numeric value for each fraction is indicated below the corresponding segment, with a dot representing fractions $\leq 5\%$. The upper red bar (where present) indicates the fraction of residues that have poor fit to the electron density. The numeric value is given above the bar.

Mol	Chain	Length	Quality of chain
1	A	202	 2% (red), 70% (green), 25% (yellow), . . (grey)
1	C	202	 % (red), 71% (green), 22% (yellow), . . (grey)
1	E	202	 66% (green), 27% (yellow), . . (grey)
1	F	202	 2% (red), 66% (green), 29% (yellow), . . (grey)
1	H	202	 70% (green), 25% (yellow), . . (grey)

Continued on next page...

Continued from previous page...

Mol	Chain	Length	Quality of chain	
1	J	202	66%	26%
1	L	202	63%	31%
2	B	194	70%	20%
2	D	194	68%	21%
2	G	194	71%	19%
2	I	194	68%	21%
2	K	194	69%	20%
2	M	194	68%	22%
2	N	194	69%	20%

2 Entry composition

There are 6 unique types of molecules in this entry. The entry contains 20697 atoms, of which 182 are hydrogens and 0 are deuteriums.

In the tables below, the ZeroOcc column contains the number of atoms modelled with zero occupancy, the AltConf column contains the number of residues with at least one atom in alternate conformation and the Trace column contains the number of residues modelled with at most 2 atoms.

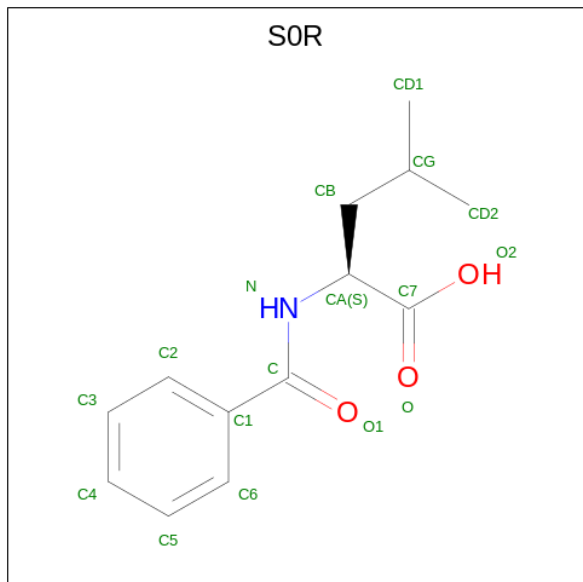
- Molecule 1 is a protein called ATP-dependent Clp protease proteolytic subunit 2.

Mol	Chain	Residues	Atoms					ZeroOcc	AltConf	Trace
			Total	C	N	O	S			
1	A	194	1491	936	255	292	8	0	0	0
1	C	196	1497	940	256	293	8	0	0	0
1	F	196	1497	940	256	293	8	0	0	0
1	H	196	1501	943	257	293	8	0	0	0
1	J	195	1502	946	256	292	8	0	0	0
1	L	193	1474	925	252	289	8	0	0	0
1	E	193	1474	925	252	289	8	0	0	0

- Molecule 2 is a protein called ATP-dependent Clp protease proteolytic subunit 1.

Mol	Chain	Residues	Atoms					ZeroOcc	AltConf	Trace
			Total	C	N	O	S			
2	B	177	1351	855	228	259	9	0	0	0
2	D	175	1332	843	223	257	9	0	0	0
2	I	175	1328	841	223	255	9	0	0	0
2	K	175	1322	838	220	255	9	0	0	0
2	M	176	1324	841	218	256	9	0	0	0
2	N	176	1324	841	218	256	9	0	0	0
2	G	176	1330	844	221	256	9	0	0	0

- Molecule 3 is (2S)-2-benzamido-4-methyl-pentanoic acid (three-letter code: S0R) (formula: $C_{13}H_{17}NO_3$).



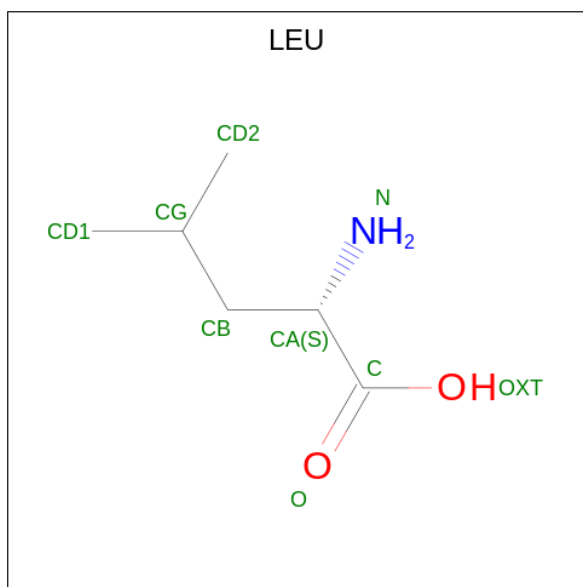
Mol	Chain	Residues	Atoms				ZeroOcc	AltConf
			Total	C	N	O		
3	A	1	Total 16	13	1	2	0	0
3	B	1	Total 16	13	1	2	0	0
3	C	1	Total 16	13	1	2	0	0
3	D	1	Total 16	13	1	2	0	0
3	F	1	Total 16	13	1	2	0	0
3	H	1	Total 16	13	1	2	0	0
3	I	1	Total 16	13	1	2	0	0
3	J	1	Total 16	13	1	2	0	0
3	K	1	Total 16	13	1	2	0	0
3	L	1	Total 16	13	1	2	0	0
3	M	1	Total 16	13	1	2	0	0
3	N	1	Total 16	13	1	2	0	0

Continued on next page...

Continued from previous page...

Mol	Chain	Residues	Atoms				ZeroOcc	AltConf
3	E	1	Total	C	N	O	0	0
			16	13	1	2		
3	G	1	Total	C	N	O	0	0
			16	13	1	2		

- Molecule 4 is LEUCINE (three-letter code: LEU) (formula: C₆H₁₃NO₂).



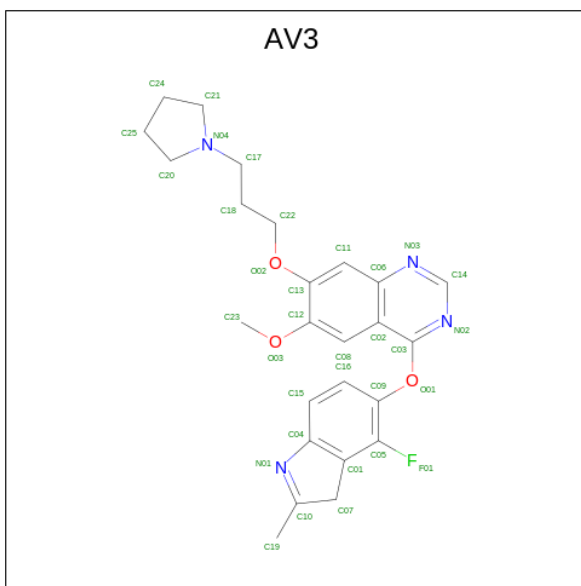
Mol	Chain	Residues	Atoms				ZeroOcc	AltConf
4	A	1	Total	C	N	O	0	0
			9	6	1	2		
4	B	1	Total	C	N	O	0	0
			9	6	1	2		
4	C	1	Total	C	N	O	0	0
			9	6	1	2		
4	D	1	Total	C	N	O	0	0
			9	6	1	2		
4	F	1	Total	C	N	O	0	0
			9	6	1	2		
4	H	1	Total	C	N	O	0	0
			9	6	1	2		
4	I	1	Total	C	N	O	0	0
			9	6	1	2		
4	J	1	Total	C	N	O	0	0
			9	6	1	2		
4	K	1	Total	C	N	O	0	0
			9	6	1	2		

Continued on next page...

Continued from previous page...

Mol	Chain	Residues	Atoms				ZeroOcc	AltConf
4	L	1	Total	C	N	O	0	0
			9	6	1	2		
4	M	1	Total	C	N	O	0	0
			9	6	1	2		
4	N	1	Total	C	N	O	0	0
			9	6	1	2		
4	E	1	Total	C	N	O	0	0
			9	6	1	2		
4	G	1	Total	C	N	O	0	0
			9	6	1	2		

- Molecule 5 is 4-[(4-fluoro-2-methyl-3H-indol-5-yl)oxy]-6-methoxy-7-[3-(pyrrolidin-1-yl)propoxy]quinazoline (three-letter code: AV3) (formula: C₂₅H₂₇FN₄O₃) (labeled as "Ligand of Interest" by depositor).



Mol	Chain	Residues	Atoms					ZeroOcc	AltConf	
5	B	1	Total	C	F	H	N	O	0	0
			59	25	1	26	4	3		
5	B	1	Total	C	F	H	N	O	0	0
			59	25	1	26	4	3		
5	D	1	Total	C	F	H	N	O	0	0
			59	25	1	26	4	3		
5	I	1	Total	C	F	H	N	O	0	0
			59	25	1	26	4	3		
5	K	1	Total	C	F	H	N	O	0	0
			59	25	1	26	4	3		

Continued on next page...

Continued from previous page...

Mol	Chain	Residues	Atoms					ZeroOcc	AltConf	
5	N	1	Total	C	F	H	N	O	0	0
			59	25	1	26	4	3		
5	G	1	Total	C	F	H	N	O	0	0
			59	25	1	26	4	3		

- Molecule 6 is water.

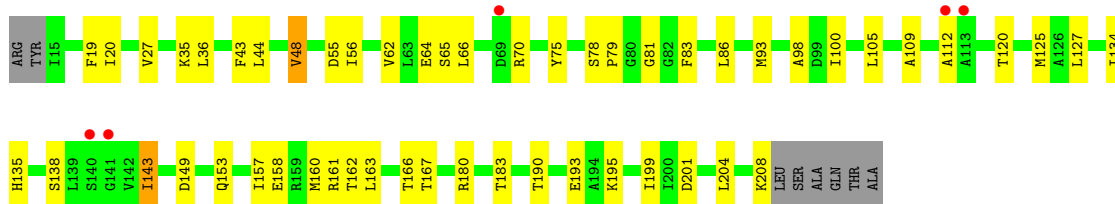
Mol	Chain	Residues	Atoms		ZeroOcc	AltConf
6	A	14	Total	O	0	0
			14	14		
6	B	10	Total	O	0	0
			10	10		
6	C	13	Total	O	0	0
			13	13		
6	D	11	Total	O	0	0
			11	11		
6	F	14	Total	O	0	0
			14	14		
6	H	24	Total	O	0	0
			24	24		
6	I	8	Total	O	0	0
			8	8		
6	J	14	Total	O	0	0
			14	14		
6	K	8	Total	O	0	0
			8	8		
6	L	19	Total	O	0	0
			19	19		
6	M	13	Total	O	0	0
			13	13		
6	N	16	Total	O	0	0
			16	16		
6	E	12	Total	O	0	0
			12	12		
6	G	11	Total	O	0	0
			11	11		

3 Residue-property plots [i](#)

These plots are drawn for all protein, RNA, DNA and oligosaccharide chains in the entry. The first graphic for a chain summarises the proportions of the various outlier classes displayed in the second graphic. The second graphic shows the sequence view annotated by issues in geometry and electron density. Residues are color-coded according to the number of geometric quality criteria for which they contain at least one outlier: green = 0, yellow = 1, orange = 2 and red = 3 or more. A red dot above a residue indicates a poor fit to the electron density ($RSRZ > 2$). Stretches of 2 or more consecutive residues without any outlier are shown as a green connector. Residues present in the sample, but not in the model, are shown in grey.

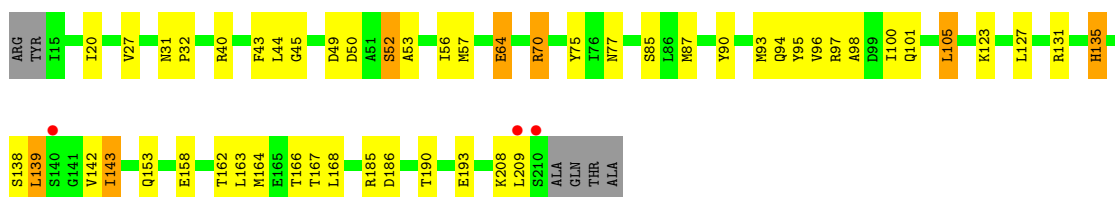
- Molecule 1: ATP-dependent Clp protease proteolytic subunit 2

Chain A: 



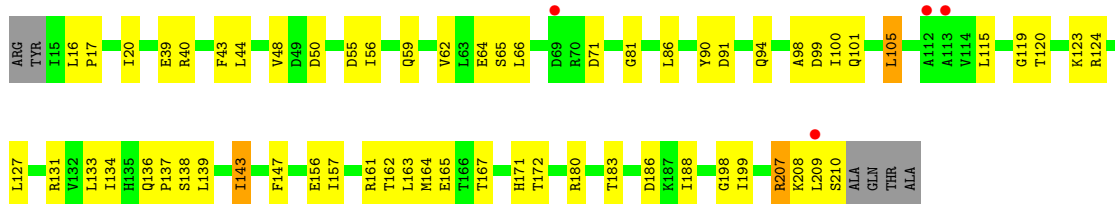
- Molecule 1: ATP-dependent Clp protease proteolytic subunit 2

Chain C: 



- Molecule 1: ATP-dependent Clp protease proteolytic subunit 2

Chain F: 



- Molecule 1: ATP-dependent Clp protease proteolytic subunit 2

Chain H: 





- Molecule 1: ATP-dependent Clp protease proteolytic subunit 2

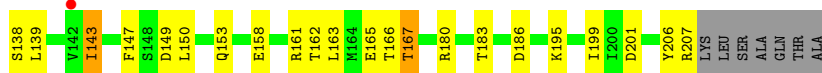
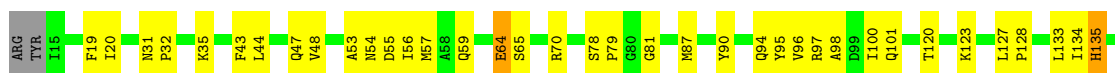


- Molecule 1: ATP-dependent Clp protease proteolytic subunit 2

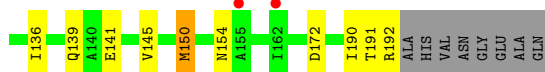
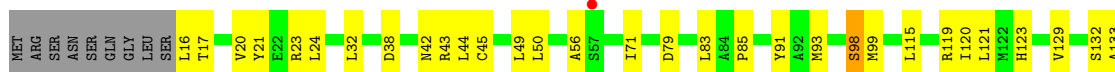


THR
ALA

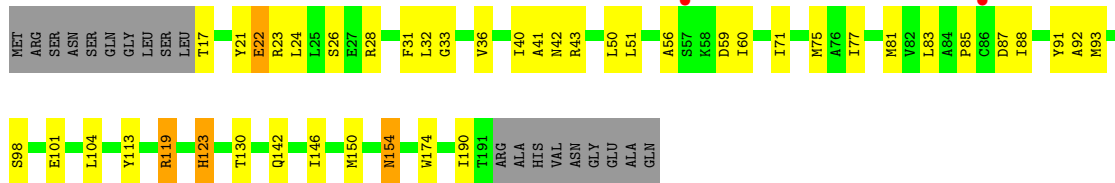
- Molecule 1: ATP-dependent Clp protease proteolytic subunit 2



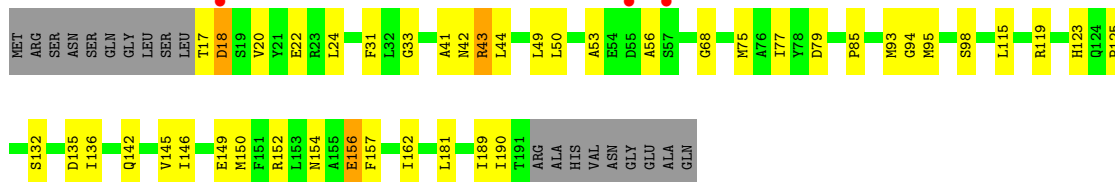
- Molecule 2: ATP-dependent Clp protease proteolytic subunit 1



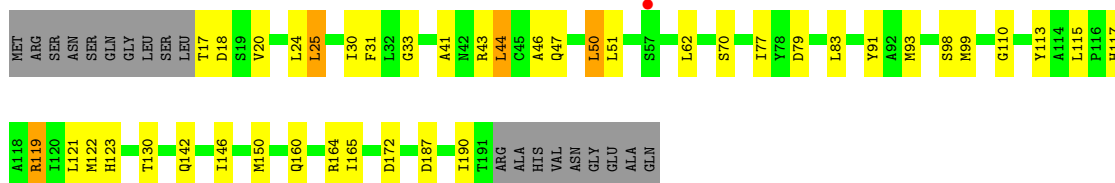
- Molecule 2: ATP-dependent Clp protease proteolytic subunit 1



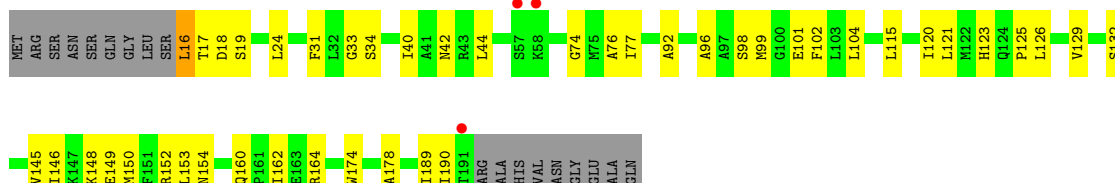
- Molecule 2: ATP-dependent Clp protease proteolytic subunit 1



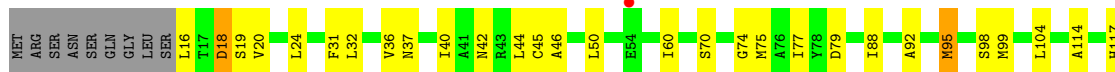
- Molecule 2: ATP-dependent Clp protease proteolytic subunit 1



- Molecule 2: ATP-dependent Clp protease proteolytic subunit 1



- Molecule 2: ATP-dependent Clp protease proteolytic subunit 1





- Molecule 2: ATP-dependent Clp protease proteolytic subunit 1

Chain G: 71% 19% 9%



4 Data and refinement statistics

Property	Value	Source
Space group	C 1 2 1	Depositor
Cell constants a, b, c, α , β , γ	210.63Å 180.78Å 95.93Å 90.00° 95.72° 90.00°	Depositor
Resolution (Å)	29.70 – 2.69 29.70 – 2.69	Depositor EDS
% Data completeness (in resolution range)	98.1 (29.70-2.69) 98.1 (29.70-2.69)	Depositor EDS
R_{merge}	(Not available)	Depositor
R_{sym}	(Not available)	Depositor
$\langle I/\sigma(I) \rangle$ ¹	1.37 (at 2.68Å)	Xtrriage
Refinement program	PHENIX 1.9_1692+SVN	Depositor
R, R_{free}	0.192 , 0.249 0.196 , 0.250	Depositor DCC
R_{free} test set	1997 reflections (2.07%)	wwPDB-VP
Wilson B-factor (Å ²)	51.3	Xtrriage
Anisotropy	0.126	Xtrriage
Bulk solvent k_{sol} (e/Å ³), B_{sol} (Å ²)	0.36 , 34.4	EDS
L-test for twinning ²	$\langle L \rangle = 0.49$, $\langle L^2 \rangle = 0.32$	Xtrriage
Estimated twinning fraction	No twinning to report.	Xtrriage
F_o, F_c correlation	0.94	EDS
Total number of atoms	20697	wwPDB-VP
Average B, all atoms (Å ²)	39.0	wwPDB-VP

Xtrriage's analysis on translational NCS is as follows: *The largest off-origin peak in the Patterson function is 8.44% of the height of the origin peak. No significant pseudotranslation is detected.*

¹Intensities estimated from amplitudes.

²Theoretical values of $\langle |L| \rangle$, $\langle L^2 \rangle$ for acentric reflections are 0.5, 0.333 respectively for untwinned datasets, and 0.375, 0.2 for perfectly twinned datasets.

5 Model quality [i](#)

5.1 Standard geometry [i](#)

Bond lengths and bond angles in the following residue types are not validated in this section: AV3, S0R

The Z score for a bond length (or angle) is the number of standard deviations the observed value is removed from the expected value. A bond length (or angle) with $|Z| > 5$ is considered an outlier worth inspection. RMSZ is the root-mean-square of all Z scores of the bond lengths (or angles).

Mol	Chain	Bond lengths		Bond angles	
		RMSZ	# Z >5	RMSZ	# Z >5
1	A	0.59	0/1512	0.52	0/2045
1	C	0.56	0/1518	0.53	0/2055
1	E	0.57	0/1495	0.54	0/2025
1	F	0.55	0/1518	0.54	0/2055
1	H	0.56	0/1522	0.53	0/2059
1	J	0.53	0/1524	0.53	0/2062
1	L	0.53	0/1495	0.50	0/2025
2	B	0.52	0/1373	0.51	0/1856
2	D	0.55	0/1354	0.51	0/1831
2	G	0.56	0/1352	0.54	0/1830
2	I	0.55	0/1350	0.55	0/1826
2	K	0.53	0/1344	0.49	0/1819
2	M	0.55	0/1346	0.51	0/1823
2	N	0.54	0/1346	0.52	0/1823
All	All	0.55	0/20049	0.52	0/27134

There are no bond length outliers.

There are no bond angle outliers.

There are no chirality outliers.

There are no planarity outliers.

5.2 Too-close contacts [i](#)

In the following table, the Non-H and H(model) columns list the number of non-hydrogen atoms and hydrogen atoms in the chain respectively. The H(added) column lists the number of hydrogen atoms added and optimized by MolProbity. The Clashes column lists the number of clashes within the asymmetric unit, whereas Symm-Clashes lists symmetry-related clashes.

Mol	Chain	Non-H	H(model)	H(added)	Clashes	Symm-Clashes
1	A	1491	0	1495	45	0
1	C	1497	0	1496	42	0
1	E	1474	0	1467	52	0
1	F	1497	0	1496	53	0
1	H	1501	0	1507	51	0
1	J	1502	0	1509	58	0
1	L	1474	0	1467	51	0
2	B	1351	0	1344	40	0
2	D	1332	0	1320	37	0
2	G	1330	0	1316	38	0
2	I	1328	0	1316	41	0
2	K	1322	0	1305	39	0
2	M	1324	0	1305	45	0
2	N	1324	0	1305	42	0
3	A	16	0	0	0	0
3	B	16	0	0	0	0
3	C	16	0	0	1	0
3	D	16	0	0	0	0
3	E	16	0	0	0	0
3	F	16	0	0	0	0
3	G	16	0	0	0	0
3	H	16	0	0	0	0
3	I	16	0	0	0	0
3	J	16	0	0	2	0
3	K	16	0	0	1	0
3	L	16	0	0	2	0
3	M	16	0	0	0	0
3	N	16	0	0	0	0
4	A	9	0	10	0	0
4	B	9	0	10	2	0
4	C	9	0	10	1	0
4	D	9	0	10	3	0
4	E	9	0	10	0	0
4	F	9	0	10	3	0
4	G	9	0	10	3	0
4	H	9	0	10	1	0
4	I	9	0	10	3	0
4	J	9	0	10	2	0
4	K	9	0	10	4	0
4	L	9	0	10	5	0
4	M	9	0	10	4	0
4	N	9	0	10	3	0
5	B	66	52	0	0	0

Continued on next page...

Continued from previous page...

Mol	Chain	Non-H	H(model)	H(added)	Clashes	Symm-Clashes
5	D	33	26	0	0	0
5	G	33	26	0	0	0
5	I	33	26	0	0	0
5	K	33	26	0	2	0
5	N	33	26	0	0	0
6	A	14	0	0	0	0
6	B	10	0	0	2	0
6	C	13	0	0	1	0
6	D	11	0	0	1	0
6	E	12	0	0	3	0
6	F	14	0	0	0	0
6	G	11	0	0	0	0
6	H	24	0	0	3	0
6	I	8	0	0	0	0
6	J	14	0	0	1	0
6	K	8	0	0	2	0
6	L	19	0	0	3	0
6	M	13	0	0	1	0
6	N	16	0	0	2	0
All	All	20515	182	19788	543	0

The all-atom clashscore is defined as the number of clashes found per 1000 atoms (including hydrogen atoms). The all-atom clashscore for this structure is 14.

All (543) close contacts within the same asymmetric unit are listed below, sorted by their clash magnitude.

Atom-1	Atom-2	Interatomic distance (Å)	Clash overlap (Å)
1:H:134:ILE:HD11	1:H:199:ILE:HD11	1.39	1.00
2:I:152:ARG:HA	2:I:162:ILE:HD11	1.46	0.97
2:I:98:SER:HB3	4:I:303:LEU:OXT	1.65	0.97
1:E:143:ILE:HD11	1:E:153:GLN:HG3	1.52	0.92
1:J:40:ARG:HG3	1:J:40:ARG:HH11	1.32	0.91
1:A:134:ILE:HG22	1:A:183:THR:HG22	1.52	0.89
1:A:143:ILE:HD11	1:A:153:GLN:HG3	1.56	0.87
1:H:134:ILE:HG22	1:H:183:THR:HG22	1.57	0.86
1:E:44:LEU:HD13	1:E:56:ILE:HD11	1.58	0.85
1:J:134:ILE:HD11	1:J:199:ILE:HD11	1.57	0.85
1:A:134:ILE:HD11	1:A:199:ILE:HD11	1.59	0.84
1:C:44:LEU:HD13	1:C:56:ILE:HD11	1.58	0.84
2:M:99:MET:N	4:M:302:LEU:O	2.10	0.84
1:J:14:TYR:CD1	1:J:15:ILE:HG22	2.13	0.84

Continued on next page...

Continued from previous page...

Atom-1	Atom-2	Interatomic distance (Å)	Clash overlap (Å)
1:H:143:ILE:HD11	1:H:153:GLN:HG3	1.61	0.83
2:D:142:GLN:OE1	2:I:119:ARG:NH2	2.13	0.81
2:N:98:SER:HB3	4:N:303:LEU:OXT	1.81	0.81
2:K:17:THR:O	6:K:401:HOH:O	1.99	0.81
1:F:137:PRO:HB2	4:F:302:LEU:HD11	1.63	0.80
2:D:50:LEU:HD12	2:I:20:VAL:HG13	1.63	0.80
1:L:47:GLN:HG2	1:L:79:PRO:HG2	1.62	0.79
1:C:44:LEU:HD13	1:C:56:ILE:CD1	2.12	0.79
1:F:105:LEU:HB3	1:F:127:LEU:HD12	1.63	0.79
1:F:44:LEU:HD13	1:F:56:ILE:HD11	1.65	0.79
2:G:98:SER:HB3	4:G:303:LEU:OXT	1.83	0.79
1:E:47:GLN:HG2	1:E:79:PRO:HG2	1.65	0.78
1:E:153:GLN:NE2	6:E:402:HOH:O	2.16	0.78
2:G:98:SER:HB3	4:G:303:LEU:C	2.03	0.78
1:H:134:ILE:CG2	1:H:183:THR:HG22	2.14	0.78
2:G:16:LEU:HD12	2:G:17:THR:H	1.47	0.78
1:E:163:LEU:O	1:E:167:THR:HG23	1.83	0.77
1:F:44:LEU:HD13	1:F:56:ILE:CD1	2.14	0.77
2:M:92:ALA:HB2	2:M:104:LEU:HD13	1.67	0.77
1:F:101:GLN:HG2	1:F:123:LYS:HB3	1.67	0.76
2:N:19:SER:HA	6:N:401:HOH:O	1.86	0.76
2:N:20:VAL:HG13	2:G:50:LEU:HD12	1.68	0.76
1:J:44:LEU:HD13	1:J:56:ILE:CD1	2.16	0.76
1:E:134:ILE:HD11	1:E:199:ILE:HD11	1.68	0.76
1:J:134:ILE:HG22	1:J:183:THR:HG22	1.67	0.75
1:J:162:THR:HG22	1:J:180:ARG:HH12	1.50	0.75
2:N:74:GLY:HA3	2:N:99:MET:HE2	1.69	0.75
1:A:134:ILE:HD11	1:A:199:ILE:CD1	2.17	0.75
1:F:133:LEU:HD13	1:F:188:ILE:HG13	1.67	0.75
1:J:40:ARG:HH11	1:J:40:ARG:CG	2.00	0.75
2:D:41:ALA:HA	2:D:77:ILE:HD11	1.68	0.75
2:G:16:LEU:HD12	2:G:17:THR:N	2.01	0.75
2:K:24:LEU:HD13	2:K:31:PHE:HE1	1.53	0.73
1:A:75:TYR:HB3	1:A:105:LEU:HD11	1.70	0.73
1:J:134:ILE:HD11	1:J:199:ILE:CD1	2.19	0.72
2:K:18:ASP:HA	6:K:401:HOH:O	1.87	0.72
1:L:156:GLU:O	1:L:160:MET:HG3	1.88	0.72
1:F:100:ILE:H	1:F:120:THR:HG23	1.55	0.72
1:J:91:ASP:HB3	1:L:127:LEU:HD13	1.71	0.72
2:N:74:GLY:HA3	2:N:99:MET:CE	2.19	0.72
2:B:43:ARG:CG	2:M:17:THR:HG23	2.20	0.72

Continued on next page...

Continued from previous page...

Atom-1	Atom-2	Interatomic distance (Å)	Clash overlap (Å)
1:A:98:ALA:O	1:J:208:LYS:NZ	2.22	0.71
2:N:18:ASP:O	6:N:401:HOH:O	2.07	0.71
1:A:44:LEU:HD13	1:A:56:ILE:HD11	1.72	0.70
2:B:141:GLU:O	2:B:145:VAL:HG23	1.91	0.70
1:A:163:LEU:O	1:A:167:THR:HG23	1.92	0.70
1:J:163:LEU:O	1:J:167:THR:HG23	1.90	0.70
2:B:43:ARG:HG3	2:M:17:THR:HG23	1.74	0.70
1:H:44:LEU:HD13	1:H:56:ILE:CD1	2.22	0.70
2:D:98:SER:HB3	4:D:303:LEU:HB3	1.73	0.70
2:M:16:LEU:HD22	2:M:18:ASP:H	1.56	0.70
1:E:143:ILE:CD1	1:E:153:GLN:HG3	2.21	0.69
1:L:44:LEU:HD13	1:L:56:ILE:CD1	2.22	0.69
3:C:301:S0R:C7	4:C:302:LEU:HG	2.22	0.69
2:G:152:ARG:HA	2:G:162:ILE:HD11	1.73	0.69
1:L:134:ILE:HD11	1:L:199:ILE:HD11	1.74	0.69
1:H:134:ILE:HD11	1:H:199:ILE:CD1	2.17	0.69
2:N:114:ALA:HB2	2:N:186:VAL:HG11	1.75	0.69
1:F:161:ARG:O	1:F:165:GLU:HG3	1.92	0.68
1:H:75:TYR:HB3	1:H:105:LEU:HD11	1.75	0.68
1:A:127:LEU:HD13	1:F:91:ASP:HB3	1.74	0.68
1:C:163:LEU:O	1:C:167:THR:HG23	1.93	0.68
4:L:302:LEU:OXT	6:L:401:HOH:O	2.12	0.68
2:N:117:HIS:HB3	2:G:75:MET:HE2	1.74	0.68
1:L:90:TYR:O	1:L:94:GLN:HG2	1.93	0.68
2:N:98:SER:HB3	4:N:303:LEU:C	2.14	0.68
1:J:142:VAL:HG22	2:K:130:THR:HB	1.76	0.67
2:D:17:THR:N	6:D:401:HOH:O	2.27	0.67
2:I:18:ASP:O	2:I:22:GLU:HG2	1.94	0.67
2:I:152:ARG:CA	2:I:162:ILE:HD11	2.23	0.67
1:C:98:ALA:O	1:F:208:LYS:NZ	2.27	0.67
1:H:71:ASP:OD2	6:H:401:HOH:O	2.13	0.66
1:L:117:ALA:HB2	1:L:199:ILE:HG23	1.78	0.66
2:M:98:SER:HB3	4:M:302:LEU:C	2.15	0.66
1:A:44:LEU:HD13	1:A:56:ILE:CD1	2.25	0.66
1:A:127:LEU:HD23	1:A:204:LEU:HB2	1.78	0.66
1:L:167:THR:HG22	1:L:170:ARG:NH2	2.11	0.66
1:L:95:TYR:O	1:E:207:ARG:HB2	1.96	0.65
2:D:22:GLU:HG3	2:D:23:ARG:N	2.12	0.65
2:K:117:HIS:HB3	2:N:75:MET:HE2	1.78	0.65
1:A:83:PHE:HB3	1:A:160:MET:HE2	1.78	0.65
1:A:162:THR:HG22	1:A:180:ARG:HH12	1.62	0.65

Continued on next page...

Continued from previous page...

Atom-1	Atom-2	Interatomic distance (Å)	Clash overlap (Å)
1:E:162:THR:O	1:E:166:THR:HG23	1.97	0.65
2:N:117:HIS:CB	2:G:75:MET:HE2	2.26	0.65
1:H:64:GLU:HG3	1:H:96:VAL:HG13	1.77	0.65
1:A:134:ILE:CG2	1:A:183:THR:HG22	2.26	0.64
1:A:158:GLU:O	1:A:162:THR:HG23	1.96	0.64
1:L:134:ILE:HG22	1:L:183:THR:HG22	1.78	0.64
1:E:134:ILE:HG22	1:E:183:THR:HG22	1.79	0.64
1:E:149:ASP:OD1	6:E:401:HOH:O	2.15	0.64
1:J:64:GLU:HB2	1:J:96:VAL:HG13	1.80	0.64
2:I:24:LEU:HD13	2:I:31:PHE:HE1	1.63	0.64
2:I:98:SER:CB	4:I:303:LEU:OXT	2.45	0.63
2:G:98:SER:CB	4:G:303:LEU:OXT	2.45	0.63
1:C:105:LEU:HD23	1:C:127:LEU:HD11	1.80	0.63
1:J:134:ILE:CG2	1:J:183:THR:HG22	2.28	0.63
2:D:56:ALA:HB1	2:D:85:PRO:HB2	1.79	0.63
1:E:44:LEU:HD13	1:E:56:ILE:CD1	2.27	0.62
2:B:38:ASP:OD2	6:B:401:HOH:O	2.15	0.62
2:B:119:ARG:HH21	2:B:119:ARG:HG3	1.64	0.62
1:L:139:LEU:HD21	1:L:143:ILE:HD13	1.81	0.62
2:N:18:ASP:N	2:N:18:ASP:OD1	2.31	0.62
1:J:90:TYR:OH	1:J:170:ARG:NH2	2.29	0.62
1:L:162:THR:O	1:L:166:THR:HG23	1.99	0.62
2:D:101:GLU:OE2	2:D:154:ASN:ND2	2.31	0.61
2:I:93:MET:O	2:I:95:MET:N	2.34	0.61
1:F:133:LEU:HD11	1:F:186:ASP:HB3	1.82	0.61
1:L:64:GLU:OE2	1:L:96:VAL:HG13	2.00	0.61
1:J:96:VAL:HG12	1:J:98:ALA:H	1.66	0.61
2:D:42:ASN:ND2	2:I:33:GLY:HA3	2.15	0.61
1:F:90:TYR:O	1:F:94:GLN:HG2	2.00	0.61
1:J:162:THR:O	1:J:166:THR:HG23	2.01	0.61
2:K:70:SER:HA	3:K:302:S0R:CD1	2.31	0.60
2:I:56:ALA:HB1	2:I:85:PRO:HB2	1.82	0.60
1:L:140:SER:OG	6:L:401:HOH:O	2.16	0.60
1:H:207:ARG:NH2	1:E:64:GLU:OE1	2.34	0.60
2:B:17:THR:HG22	2:B:21:TYR:CE2	2.37	0.60
1:H:71:ASP:OD1	1:H:99:ASP:HB2	2.02	0.60
1:H:158:GLU:O	1:H:162:THR:HG23	2.01	0.60
2:M:152:ARG:HA	2:M:162:ILE:CD1	2.32	0.60
2:I:75:MET:HE2	2:G:117:HIS:HB3	1.84	0.60
1:J:158:GLU:O	1:J:162:THR:HG23	2.02	0.59
1:C:95:TYR:O	1:F:207:ARG:HG3	2.03	0.59

Continued on next page...

Continued from previous page...

Atom-1	Atom-2	Interatomic distance (Å)	Clash overlap (Å)
1:J:105:LEU:HD12	1:J:105:LEU:H	1.67	0.59
2:K:79:ASP:O	2:K:83:LEU:HG	2.03	0.59
1:J:44:LEU:HD13	1:J:56:ILE:HD13	1.83	0.59
1:C:49:ASP:OD1	1:C:52:SER:HB3	2.02	0.59
1:L:158:GLU:O	1:L:162:THR:HG23	2.02	0.59
1:A:134:ILE:HG22	1:A:183:THR:CG2	2.27	0.59
2:B:91:TYR:CE2	2:B:190:ILE:HD11	2.38	0.59
1:C:190:THR:OG1	1:C:193:GLU:HG3	2.03	0.59
1:H:44:LEU:HD13	1:H:56:ILE:HD11	1.84	0.59
1:H:105:LEU:HB3	1:H:127:LEU:HD12	1.85	0.58
1:F:137:PRO:CB	4:F:302:LEU:HD11	2.33	0.58
1:H:207:ARG:NH1	1:E:95:TYR:OH	2.35	0.58
1:L:134:ILE:CG2	1:L:183:THR:HG22	2.33	0.58
1:F:138:SER:HA	2:M:132:SER:HA	1.85	0.58
1:J:53:ALA:O	1:J:57:MET:HG3	2.02	0.58
1:C:96:VAL:HG12	1:C:98:ALA:H	1.68	0.58
1:A:190:THR:OG1	1:A:193:GLU:HG3	2.03	0.58
2:B:191:THR:O	2:K:83:LEU:HD22	2.03	0.58
1:A:83:PHE:HZ	1:A:163:LEU:HD23	1.68	0.58
1:H:15:ILE:N	6:H:404:HOH:O	2.37	0.58
1:C:158:GLU:OE1	6:C:401:HOH:O	2.17	0.57
2:D:71:ILE:O	2:D:75:MET:HG2	2.04	0.57
2:I:41:ALA:HA	2:I:77:ILE:HD11	1.86	0.57
1:J:68:PRO:HB3	1:J:97:ARG:NH2	2.19	0.57
2:K:98:SER:HB3	4:K:303:LEU:HB3	1.85	0.57
1:F:105:LEU:HD12	1:F:105:LEU:H	1.68	0.57
2:N:146:ILE:O	2:N:150:MET:HG2	2.04	0.57
3:L:301:S0R:O	4:L:302:LEU:HD23	2.04	0.57
2:B:191:THR:HG23	2:B:192:ARG:N	2.20	0.57
1:E:101:GLN:HG3	1:E:123:LYS:O	2.04	0.57
1:J:91:ASP:OD2	1:L:129:ASN:HB2	2.05	0.56
2:K:24:LEU:CD1	2:K:31:PHE:HE1	2.18	0.56
1:E:162:THR:HG22	1:E:180:ARG:HH12	1.70	0.56
1:A:48:VAL:HB	1:A:81:GLY:HA3	1.87	0.56
2:B:93:MET:HG2	2:B:115:LEU:HD11	1.88	0.56
2:I:145:VAL:CG1	2:G:119:ARG:HH22	2.17	0.56
2:K:98:SER:HB3	4:K:303:LEU:OXT	2.06	0.56
1:J:15:ILE:O	1:J:15:ILE:HG13	2.05	0.56
1:J:157:ILE:HG23	4:J:302:LEU:CD1	2.36	0.56
1:L:16:LEU:HD12	1:L:17:PRO:HD2	1.88	0.56
1:C:75:TYR:HB3	1:C:105:LEU:CD1	2.36	0.56

Continued on next page...

Continued from previous page...

Atom-1	Atom-2	Interatomic distance (Å)	Clash overlap (Å)
2:N:92:ALA:HB2	2:N:104:LEU:HD13	1.87	0.56
1:C:90:TYR:O	1:C:94:GLN:HG2	2.06	0.56
2:I:43:ARG:HB2	2:G:17:THR:HG23	1.87	0.56
1:F:119:GLY:O	1:F:124:ARG:HD3	2.05	0.55
2:I:42:ASN:ND2	2:G:33:GLY:HA3	2.22	0.55
2:I:68:GLY:HA3	2:I:98:SER:HB2	1.89	0.55
1:A:83:PHE:CZ	1:A:163:LEU:HD23	2.41	0.55
1:C:20:ILE:HD11	1:C:27:VAL:CG1	2.37	0.55
1:F:48:VAL:HB	1:F:81:GLY:HA3	1.86	0.55
1:C:97:ARG:CG	1:F:207:ARG:HD3	2.37	0.55
1:E:134:ILE:HG22	1:E:183:THR:CG2	2.36	0.55
1:L:91:ASP:HB3	1:E:127:LEU:HD13	1.87	0.55
1:L:153:GLN:O	1:L:157:ILE:HG13	2.06	0.55
2:I:49:LEU:HD12	2:G:31:PHE:HZ	1.72	0.55
1:E:135:HIS:HB2	6:E:404:HOH:O	2.07	0.55
1:J:158:GLU:OE2	1:J:180:ARG:NH2	2.36	0.55
1:L:147:PHE:CZ	2:N:125:PRO:HB2	2.42	0.55
1:F:100:ILE:H	1:F:120:THR:CG2	2.20	0.55
2:K:110:GLY:N	2:K:187:ASP:OD2	2.33	0.54
2:D:83:LEU:HD13	2:I:190:ILE:CG2	2.37	0.54
1:C:53:ALA:O	1:C:57:MET:HG3	2.07	0.54
1:C:139:LEU:HD21	1:C:143:ILE:HG23	1.90	0.54
2:M:146:ILE:O	2:M:150:MET:HG2	2.07	0.54
1:L:162:THR:HG22	1:L:180:ARG:HH12	1.73	0.54
1:L:163:LEU:O	1:L:167:THR:HG23	2.07	0.54
2:M:160:GLN:OE1	2:M:164:ARG:HD3	2.08	0.54
2:D:59:ASP:OD1	2:D:87:ASP:HB2	2.08	0.54
1:F:134:ILE:HD11	1:F:199:ILE:HD11	1.88	0.54
2:I:146:ILE:O	2:I:150:MET:HG2	2.08	0.54
2:I:142:GLN:O	2:I:146:ILE:HD13	2.08	0.54
2:B:17:THR:O	2:B:20:VAL:HG22	2.08	0.54
1:H:96:VAL:HG12	1:H:98:ALA:H	1.73	0.54
1:E:134:ILE:CG2	1:E:183:THR:HG22	2.38	0.54
2:B:23:ARG:HD2	2:K:50:LEU:HD11	1.89	0.53
2:B:83:LEU:HD13	2:M:190:ILE:CG2	2.38	0.53
2:D:60:ILE:HB	2:D:88:ILE:HD13	1.88	0.53
1:H:163:LEU:O	1:H:167:THR:HG23	2.09	0.53
2:G:56:ALA:HB1	2:G:85:PRO:HB2	1.91	0.53
2:K:17:THR:OG1	2:K:18:ASP:N	2.40	0.53
1:C:142:VAL:HG22	2:D:130:THR:HB	1.90	0.53
1:H:109:ALA:HB1	1:H:133:LEU:HD23	1.91	0.53

Continued on next page...

Continued from previous page...

Atom-1	Atom-2	Interatomic distance (Å)	Clash overlap (Å)
2:I:79:ASP:OD2	2:G:117:HIS:HB2	2.08	0.53
1:E:53:ALA:O	1:E:57:MET:HG3	2.09	0.53
2:B:83:LEU:CD1	2:M:115:LEU:HD22	2.38	0.53
2:D:91:TYR:CE2	2:D:190:ILE:HD11	2.43	0.53
2:G:93:MET:O	2:G:95:MET:N	2.42	0.53
2:I:75:MET:CE	2:G:117:HIS:HB3	2.39	0.53
2:K:119:ARG:HB2	5:K:301:AV3:C15	2.39	0.53
2:N:60:ILE:HB	2:N:88:ILE:HD13	1.91	0.53
2:D:92:ALA:HB2	2:D:104:LEU:HD13	1.90	0.52
1:F:86:LEU:HD12	1:F:115:LEU:HD21	1.91	0.52
1:C:105:LEU:HD23	1:C:127:LEU:CD1	2.39	0.52
1:H:90:TYR:O	1:H:94:GLN:HG2	2.08	0.52
1:L:105:LEU:HD12	1:L:105:LEU:N	2.24	0.52
1:C:40:ARG:NH2	1:C:70:ARG:O	2.40	0.52
2:D:113:TYR:HB3	2:D:190:ILE:HG13	1.90	0.52
2:N:32:LEU:HD11	2:N:36:VAL:HG22	1.90	0.52
1:H:62:VAL:O	1:H:66:LEU:HG	2.09	0.52
2:N:44:LEU:HD23	2:N:77:ILE:HD13	1.91	0.52
1:A:208:LYS:NZ	1:F:98:ALA:O	2.40	0.52
1:L:97:ARG:HH21	1:E:207:ARG:CZ	2.22	0.52
1:L:138:SER:O	4:L:302:LEU:HG	2.10	0.52
1:J:90:TYR:O	1:J:94:GLN:HG2	2.10	0.51
1:L:147:PHE:CE2	2:N:125:PRO:HB2	2.46	0.51
2:M:16:LEU:HD23	2:M:17:THR:H	1.74	0.51
1:L:45:GLY:HA2	1:L:77:ASN:O	2.10	0.51
2:G:152:ARG:HA	2:G:162:ILE:CD1	2.40	0.51
1:H:143:ILE:HD11	1:H:153:GLN:CG	2.37	0.51
2:M:148:LYS:NZ	6:M:402:HOH:O	2.43	0.51
2:N:98:SER:OG	2:N:123:HIS:NE2	2.42	0.51
2:N:181:LEU:HD22	2:N:189:ILE:HG13	1.92	0.51
1:E:139:LEU:HD21	1:E:143:ILE:HG23	1.93	0.51
1:C:135:HIS:HB3	1:C:186:ASP:OD1	2.10	0.51
1:C:164:MET:O	1:C:168:LEU:HB2	2.10	0.51
1:L:44:LEU:HD13	1:L:56:ILE:HD12	1.92	0.51
1:L:31:ASN:HB2	1:L:32:PRO:HD2	1.91	0.51
2:G:75:MET:HE3	2:G:78:TYR:HD2	1.76	0.51
1:A:162:THR:O	1:A:166:THR:HG23	2.11	0.51
1:J:105:LEU:HB3	1:J:127:LEU:HD12	1.93	0.51
2:K:98:SER:HB3	4:K:303:LEU:C	2.31	0.51
2:K:160:GLN:OE1	2:K:164:ARG:HD3	2.11	0.51
1:A:138:SER:HA	2:B:132:SER:HA	1.93	0.51

Continued on next page...

Continued from previous page...

Atom-1	Atom-2	Interatomic distance (Å)	Clash overlap (Å)
1:H:44:LEU:HD13	1:H:56:ILE:HD13	1.90	0.51
2:G:146:ILE:O	2:G:150:MET:HG2	2.11	0.51
1:A:195:LYS:HE3	1:A:201:ASP:O	2.11	0.50
1:H:101:GLN:HG2	1:H:123:LYS:HB3	1.93	0.50
2:N:119:ARG:C	2:N:120:ILE:HD12	2.31	0.50
1:J:83:PHE:CZ	1:J:163:LEU:HD23	2.47	0.50
1:H:207:ARG:HD2	1:E:97:ARG:HG3	1.93	0.50
1:J:40:ARG:CG	1:J:40:ARG:NH1	2.69	0.50
1:L:53:ALA:O	1:L:57:MET:HG3	2.11	0.50
2:D:83:LEU:HD13	2:I:190:ILE:HG21	1.92	0.50
2:I:145:VAL:HG11	2:G:119:ARG:HH22	1.77	0.50
2:B:98:SER:HB2	4:B:304:LEU:OXT	2.11	0.50
1:C:97:ARG:HG3	1:F:207:ARG:HD3	1.94	0.50
2:D:91:TYR:CD2	2:D:190:ILE:HD11	2.46	0.50
1:F:143:ILE:HG12	2:M:129:VAL:HG23	1.93	0.50
1:L:44:LEU:HG	1:L:44:LEU:O	2.12	0.50
2:M:99:MET:HB2	4:M:302:LEU:O	2.12	0.50
1:A:20:ILE:HD11	1:A:27:VAL:HG11	1.94	0.50
2:I:132:SER:OG	2:I:135:ASP:OD2	2.29	0.50
1:C:64:GLU:OE2	1:C:96:VAL:HG13	2.12	0.49
1:E:70:ARG:O	1:E:98:ALA:HB1	2.12	0.49
1:F:55:ASP:O	1:F:59:GLN:HG3	2.13	0.49
1:F:162:THR:HG22	1:F:180:ARG:NH1	2.27	0.49
1:J:190:THR:OG1	1:J:193:GLU:HG3	2.12	0.49
2:K:142:GLN:O	2:K:146:ILE:HD13	2.13	0.49
1:F:16:LEU:HD12	1:F:17:PRO:HD2	1.94	0.49
2:I:181:LEU:HD22	2:I:189:ILE:HG13	1.95	0.49
2:M:148:LYS:HE2	2:M:152:ARG:NH2	2.27	0.49
2:N:20:VAL:HG13	2:G:50:LEU:CD1	2.41	0.49
2:D:119:ARG:HH22	2:M:145:VAL:HG11	1.77	0.49
1:H:45:GLY:HA3	1:E:54:ASN:HD21	1.77	0.49
2:B:191:THR:HG23	2:B:192:ARG:H	1.77	0.49
1:F:163:LEU:O	1:F:167:THR:HG23	2.12	0.49
1:J:14:TYR:CD1	1:J:15:ILE:N	2.81	0.49
2:N:119:ARG:HG2	2:N:174:TRP:CE3	2.48	0.49
2:I:17:THR:OG1	2:I:18:ASP:N	2.46	0.49
1:L:64:GLU:O	1:L:64:GLU:HG3	2.13	0.49
2:I:115:LEU:N	2:I:115:LEU:HD23	2.28	0.48
1:J:182:ASP:HB3	1:J:187:LYS:HD2	1.94	0.48
1:A:149:ASP:OD1	1:J:185:ARG:NH1	2.46	0.48
2:B:119:ARG:C	2:B:120:ILE:HD12	2.33	0.48

Continued on next page...

Continued from previous page...

Atom-1	Atom-2	Interatomic distance (Å)	Clash overlap (Å)
2:I:98:SER:HB3	4:I:303:LEU:C	2.31	0.48
2:K:43:ARG:O	2:K:47:GLN:HG3	2.13	0.48
1:L:196:ASP:OD1	6:L:402:HOH:O	2.20	0.48
1:E:64:GLU:HB2	1:E:96:VAL:HG13	1.96	0.48
1:J:62:VAL:HG21	1:L:32:PRO:HA	1.96	0.48
2:D:40:ILE:HD12	2:D:43:ARG:NH1	2.29	0.48
1:C:143:ILE:HD11	1:C:153:GLN:HG3	1.96	0.48
2:D:98:SER:HB3	4:D:303:LEU:OXT	2.14	0.48
2:D:98:SER:CB	4:D:303:LEU:OXT	2.62	0.48
1:H:86:LEU:HD12	1:H:115:LEU:HD21	1.96	0.48
1:J:16:LEU:HD12	1:J:17:PRO:HD2	1.95	0.48
1:A:19:PHE:HZ	1:A:35:LYS:HB2	1.78	0.48
1:F:147:PHE:CE2	2:M:125:PRO:HB2	2.49	0.48
1:H:208:LYS:HE2	1:E:98:ALA:O	2.13	0.48
1:C:31:ASN:HB2	1:C:32:PRO:HD2	1.96	0.48
1:H:135:HIS:HB2	1:H:186:ASP:OD1	2.14	0.48
2:K:20:VAL:CG1	2:N:46:ALA:HB1	2.44	0.48
2:G:75:MET:CE	2:G:78:TYR:HD2	2.25	0.48
1:A:55:ASP:OD2	1:J:15:ILE:HG12	2.14	0.48
1:A:109:ALA:N	1:A:112:ALA:HB3	2.28	0.48
1:C:50:ASP:OD1	1:C:85:SER:OG	2.32	0.48
1:C:139:LEU:HD21	1:C:143:ILE:CG2	2.44	0.48
1:J:111:ALA:HB2	3:J:301:S0R:C3	2.45	0.47
1:L:169:ALA:HB1	1:L:174:LYS:O	2.14	0.47
2:M:178:ALA:HA	2:M:189:ILE:HD11	1.96	0.47
1:J:157:ILE:HG12	4:J:302:LEU:HD13	1.95	0.47
1:L:142:VAL:HG22	2:N:130:THR:HB	1.95	0.47
2:M:74:GLY:HA3	2:M:99:MET:HE2	1.96	0.47
2:I:24:LEU:HD13	2:I:31:PHE:CE1	2.47	0.47
1:J:14:TYR:CE1	1:J:15:ILE:HG22	2.49	0.47
2:G:44:LEU:HA	2:G:44:LEU:HD12	1.52	0.47
1:F:147:PHE:CD2	2:M:125:PRO:HB2	2.49	0.47
2:K:25:LEU:HD22	2:K:51:LEU:HD21	1.96	0.47
1:A:70:ARG:O	1:A:98:ALA:HB1	2.15	0.47
2:D:24:LEU:HD13	2:D:31:PHE:HE1	1.80	0.47
2:N:119:ARG:HG2	2:N:174:TRP:HE3	1.78	0.47
1:H:139:LEU:HD21	1:H:143:ILE:HG23	1.96	0.47
1:J:174:LYS:HE2	1:J:197:TYR:O	2.14	0.47
2:K:33:GLY:HA3	2:N:42:ASN:ND2	2.30	0.47
2:M:148:LYS:NZ	2:M:152:ARG:HH22	2.11	0.47
1:E:135:HIS:HB2	1:E:186:ASP:OD1	2.15	0.47

Continued on next page...

Continued from previous page...

Atom-1	Atom-2	Interatomic distance (Å)	Clash overlap (Å)
2:I:24:LEU:CD1	2:I:31:PHE:HE1	2.26	0.47
2:K:30:ILE:HG13	2:K:62:LEU:HD13	1.95	0.47
2:N:120:ILE:HD12	2:N:120:ILE:N	2.30	0.47
2:B:24:LEU:HD11	2:K:46:ALA:HB1	1.96	0.47
2:D:42:ASN:HD21	2:I:33:GLY:HA3	1.80	0.47
1:F:164:MET:O	1:F:164:MET:HG2	2.13	0.47
1:H:195:LYS:HE3	1:H:201:ASP:O	2.15	0.47
1:A:20:ILE:HD11	1:A:27:VAL:CG1	2.45	0.46
2:B:98:SER:HB2	2:B:99:MET:H	1.63	0.46
1:C:208:LYS:HE3	1:H:96:VAL:O	2.14	0.46
2:D:119:ARG:HH22	2:M:145:VAL:CG1	2.29	0.46
2:B:119:ARG:HG3	2:B:119:ARG:NH2	2.26	0.46
1:F:162:THR:CG2	1:F:180:ARG:HH12	2.28	0.46
1:J:83:PHE:HZ	1:J:163:LEU:HD23	1.81	0.46
1:L:133:LEU:HD11	1:L:186:ASP:HB3	1.96	0.46
1:A:75:TYR:HB3	1:A:105:LEU:CD1	2.43	0.46
1:C:185:ARG:NH1	1:H:149:ASP:OD2	2.49	0.46
1:F:157:ILE:HG12	4:F:302:LEU:HD13	1.98	0.46
2:K:93:MET:HE1	2:N:45:CYS:HB3	1.97	0.46
1:L:139:LEU:HD13	4:L:302:LEU:HB2	1.98	0.46
1:A:143:ILE:HD11	1:A:153:GLN:CG	2.37	0.46
2:I:149:GLU:OE2	2:I:152:ARG:NH1	2.48	0.46
2:G:190:ILE:HG22	2:G:191:THR:N	2.31	0.46
1:A:83:PHE:O	1:A:86:LEU:HB3	2.16	0.46
2:B:71:ILE:HG23	2:B:150:MET:CE	2.46	0.46
2:B:129:VAL:HA	2:B:139:GLN:OE1	2.16	0.46
1:H:67:ASP:OD2	6:H:402:HOH:O	2.21	0.46
1:L:47:GLN:HG2	1:L:79:PRO:CG	2.39	0.46
1:E:48:VAL:O	1:E:81:GLY:HA3	2.16	0.46
2:B:83:LEU:HD13	2:M:190:ILE:HG21	1.97	0.46
2:D:28:ARG:HG2	2:D:51:LEU:HD22	1.97	0.46
2:D:93:MET:HG2	2:M:76:ALA:HB1	1.98	0.46
1:F:172:THR:HA	1:F:198:GLY:O	2.16	0.46
1:A:44:LEU:O	1:A:44:LEU:HG	2.16	0.45
2:K:146:ILE:O	2:K:150:MET:HG2	2.16	0.45
1:H:40:ARG:NH2	1:H:70:ARG:O	2.49	0.45
1:C:162:THR:O	1:C:166:THR:HG23	2.16	0.45
1:F:20:ILE:HG23	1:F:20:ILE:O	2.17	0.45
2:I:156:GLU:HG3	2:I:157:PHE:N	2.29	0.45
1:J:19:PHE:HZ	1:J:35:LYS:HB2	1.82	0.45
1:J:134:ILE:HG22	1:J:183:THR:CG2	2.42	0.45

Continued on next page...

Continued from previous page...

Atom-1	Atom-2	Interatomic distance (Å)	Clash overlap (Å)
1:A:62:VAL:HG21	1:J:32:PRO:HA	1.97	0.45
2:B:56:ALA:HB1	2:B:85:PRO:HB2	1.98	0.45
1:F:44:LEU:O	1:F:44:LEU:HG	2.17	0.45
2:N:37:ASN:OD1	2:N:40:ILE:HG12	2.17	0.45
2:N:95:MET:O	2:N:95:MET:HG3	2.15	0.45
1:E:161:ARG:O	1:E:165:GLU:HG3	2.17	0.45
2:B:121:LEU:HD11	2:B:172:ASP:HB3	1.99	0.45
3:L:301:S0R:C7	4:L:302:LEU:HD23	2.47	0.45
1:C:127:LEU:HD13	1:H:91:ASP:HB3	1.99	0.45
1:H:122:GLY:N	1:H:201:ASP:OD2	2.43	0.45
2:M:98:SER:HB3	4:M:302:LEU:OXT	2.17	0.45
2:G:43:ARG:HD3	2:G:44:LEU:N	2.31	0.45
1:A:93:MET:HG2	1:A:100:ILE:HD13	1.99	0.45
1:A:157:ILE:HD13	2:B:136:ILE:HD13	1.98	0.45
1:H:162:THR:HG22	1:H:180:ARG:HH12	1.82	0.45
2:M:44:LEU:HD23	2:M:77:ILE:HD13	1.98	0.45
2:N:92:ALA:HB2	2:N:104:LEU:CD1	2.47	0.45
1:C:31:ASN:HB2	1:C:32:PRO:CD	2.47	0.44
1:H:157:ILE:HD12	2:I:136:ILE:HD13	1.98	0.44
2:K:121:LEU:HD21	2:K:123:HIS:HD2	1.82	0.44
2:N:171:ARG:NH1	2:G:135:ASP:OD1	2.45	0.44
1:E:31:ASN:HB2	1:E:32:PRO:HD2	1.99	0.44
1:E:147:PHE:CD2	2:G:125:PRO:HB2	2.52	0.44
1:C:101:GLN:HG3	1:C:123:LYS:O	2.17	0.44
1:F:71:ASP:OD1	1:F:99:ASP:HB2	2.17	0.44
2:K:122:MET:HE1	2:K:165:ILE:HD12	1.99	0.44
1:E:19:PHE:HZ	1:E:35:LYS:HB2	1.83	0.44
2:D:119:ARG:HG2	2:D:174:TRP:CE3	2.52	0.44
1:F:143:ILE:HG12	2:M:129:VAL:CG2	2.48	0.44
2:K:99:MET:HG2	4:K:303:LEU:HB2	1.99	0.44
2:D:23:ARG:O	2:D:26:SER:OG	2.34	0.44
2:N:50:LEU:HD23	2:N:50:LEU:HA	1.73	0.44
2:N:74:GLY:HA3	2:N:99:MET:HE1	1.94	0.44
2:N:24:LEU:HD13	2:N:31:PHE:HE1	1.83	0.44
2:B:98:SER:HB3	4:B:304:LEU:HB3	1.98	0.44
2:K:91:TYR:CE2	2:K:190:ILE:HD11	2.52	0.44
1:F:139:LEU:HD21	1:F:143:ILE:HD13	1.99	0.44
1:H:147:PHE:CE2	2:I:125:PRO:HB2	2.53	0.44
2:M:16:LEU:O	2:M:19:SER:HB3	2.17	0.44
2:N:98:SER:CB	4:N:303:LEU:OXT	2.58	0.44
1:A:125:MET:SD	1:A:204:LEU:HD21	2.58	0.43

Continued on next page...

Continued from previous page...

Atom-1	Atom-2	Interatomic distance (Å)	Clash overlap (Å)
1:F:120:THR:OG1	1:F:123:LYS:HD2	2.19	0.43
2:K:117:HIS:HB3	2:N:75:MET:CE	2.45	0.43
1:L:44:LEU:HD13	1:L:56:ILE:HD11	1.97	0.43
2:M:121:LEU:HD13	2:M:174:TRP:CE2	2.53	0.43
2:B:42:ASN:ND2	2:M:33:GLY:HA3	2.33	0.43
1:F:134:ILE:HG22	1:F:183:THR:HG22	2.00	0.43
1:L:120:THR:OG1	1:L:123:LYS:HD2	2.18	0.43
2:D:33:GLY:O	2:M:42:ASN:ND2	2.47	0.43
1:F:167:THR:O	1:F:171:HIS:HD2	2.01	0.43
1:H:45:GLY:HA3	1:E:54:ASN:ND2	2.33	0.43
2:I:56:ALA:HB1	2:I:85:PRO:CB	2.47	0.43
2:D:50:LEU:CD1	2:I:20:VAL:HG13	2.43	0.43
1:F:131:ARG:O	1:F:131:ARG:HG3	2.18	0.43
2:M:149:GLU:HA	2:M:149:GLU:OE1	2.19	0.43
1:E:133:LEU:HD11	1:E:186:ASP:HB3	2.00	0.43
1:H:174:LYS:HE3	1:H:197:TYR:O	2.18	0.43
1:J:167:THR:O	1:J:171:HIS:HD2	2.01	0.43
1:L:179:ILE:O	1:L:183:THR:HG23	2.18	0.43
2:M:101:GLU:HG3	2:M:120:ILE:CG2	2.48	0.43
1:A:143:ILE:CD1	1:A:153:GLN:HG3	2.37	0.43
1:F:48:VAL:O	1:F:81:GLY:HA3	2.18	0.43
1:J:44:LEU:HD13	1:J:56:ILE:HD11	1.98	0.43
1:E:162:THR:HG22	1:E:180:ARG:NH1	2.32	0.43
2:B:71:ILE:HG23	2:B:150:MET:HE2	2.00	0.43
2:D:21:TYR:OH	2:M:42:ASN:HB3	2.19	0.43
2:G:65:ASN:HA	2:G:95:MET:O	2.19	0.43
1:F:209:LEU:HD12	1:F:209:LEU:N	2.34	0.43
1:E:134:ILE:HD11	1:E:199:ILE:CD1	2.44	0.43
1:J:96:VAL:HG12	1:J:98:ALA:N	2.32	0.43
1:J:133:LEU:HD13	1:J:188:ILE:HG13	2.00	0.43
2:M:44:LEU:HD12	2:M:44:LEU:HA	1.87	0.43
1:C:209:LEU:N	1:C:209:LEU:HD12	2.33	0.43
1:H:139:LEU:HD13	4:H:302:LEU:HB2	2.00	0.43
2:K:41:ALA:HA	2:K:77:ILE:HD11	2.01	0.43
5:K:301:AV3:C23	2:N:70:SER:HB2	2.49	0.43
1:E:195:LYS:HE3	1:E:201:ASP:O	2.19	0.43
1:J:42:ILE:CD1	1:J:60:LEU:HD23	2.49	0.42
2:M:102:PHE:HZ	2:M:153:LEU:HD13	1.84	0.42
1:E:143:ILE:HG12	2:G:129:VAL:HG22	2.01	0.42
2:B:83:LEU:HD11	2:M:115:LEU:HD22	2.00	0.42
1:L:48:VAL:O	1:L:81:GLY:HA3	2.19	0.42

Continued on next page...

Continued from previous page...

Atom-1	Atom-2	Interatomic distance (Å)	Clash overlap (Å)
1:A:78:SER:HA	1:A:79:PRO:HD3	1.88	0.42
2:B:45:CYS:O	2:B:49:LEU:HG	2.19	0.42
1:H:208:LYS:HD2	1:E:96:VAL:O	2.19	0.42
1:L:97:ARG:HH21	1:E:207:ARG:NE	2.18	0.42
1:E:150:LEU:HD11	2:G:127:GLY:O	2.20	0.42
1:A:161:ARG:HD2	2:B:133:ALA:CB	2.49	0.42
1:J:74:MET:HE3	1:J:74:MET:HB3	1.73	0.42
2:D:77:ILE:O	2:D:81:MET:HG3	2.19	0.42
1:J:53:ALA:HA	1:J:89:ILE:HD11	2.00	0.42
1:A:20:ILE:O	1:A:20:ILE:HG23	2.19	0.42
1:L:83:PHE:O	1:L:86:LEU:HB3	2.19	0.42
1:E:55:ASP:O	1:E:59:GLN:HG3	2.19	0.42
1:H:83:PHE:CD2	1:H:160:MET:HE3	2.54	0.42
2:G:59:ASP:OD2	2:G:111:LYS:NZ	2.51	0.42
1:C:97:ARG:HG2	1:F:207:ARG:HD3	2.01	0.42
1:H:96:VAL:HG12	1:H:98:ALA:N	2.35	0.42
2:K:113:TYR:HB3	2:K:190:ILE:HG13	2.00	0.42
1:E:128:PRO:HG2	1:E:206:TYR:CZ	2.54	0.42
2:B:192:ARG:NH2	6:B:403:HOH:O	2.43	0.41
2:B:50:LEU:HD23	2:B:50:LEU:HA	1.89	0.41
1:J:71:ASP:OD2	1:J:123:LYS:NZ	2.46	0.41
2:K:44:LEU:HD12	2:K:44:LEU:HA	1.79	0.41
1:E:158:GLU:O	1:E:162:THR:HG23	2.20	0.41
1:F:62:VAL:O	1:F:66:LEU:HG	2.20	0.41
2:M:24:LEU:HD13	2:M:31:PHE:HE1	1.85	0.41
1:E:147:PHE:CE2	2:G:125:PRO:HB2	2.55	0.41
1:C:70:ARG:HH11	1:C:70:ARG:HG2	1.85	0.41
1:C:209:LEU:HD12	1:C:209:LEU:H	1.85	0.41
2:G:99:MET:O	2:G:103:LEU:HG	2.20	0.41
1:H:208:LYS:HE3	1:E:100:ILE:CD1	2.51	0.41
1:J:81:GLY:O	3:J:301:S0R:N	2.53	0.41
2:K:121:LEU:HD21	2:K:123:HIS:CD2	2.55	0.41
1:L:167:THR:HG22	1:L:170:ARG:HH22	1.83	0.41
2:B:23:ARG:CD	2:K:50:LEU:HD11	2.50	0.41
1:F:162:THR:HG22	1:F:180:ARG:HH12	1.85	0.41
1:H:96:VAL:CG1	1:H:98:ALA:H	2.32	0.41
1:H:208:LYS:NZ	1:E:120:THR:CG2	2.83	0.41
1:J:134:ILE:CD1	1:J:199:ILE:HD11	2.41	0.41
1:A:62:VAL:O	1:A:66:LEU:HG	2.21	0.41
1:A:100:ILE:H	1:A:120:THR:HG23	1.86	0.41
1:C:45:GLY:HA2	1:C:77:ASN:O	2.19	0.41

Continued on next page...

Continued from previous page...

Atom-1	Atom-2	Interatomic distance (Å)	Clash overlap (Å)
1:F:134:ILE:CG2	1:F:183:THR:HG22	2.51	0.41
2:K:50:LEU:HD23	2:K:50:LEU:HA	1.76	0.41
1:E:143:ILE:HD11	1:E:153:GLN:CG	2.36	0.41
2:B:32:LEU:HB2	2:B:44:LEU:HD21	2.02	0.41
1:F:156:GLU:OE1	1:F:156:GLU:HA	2.21	0.41
1:H:83:PHE:HB3	1:H:160:MET:CE	2.50	0.41
1:J:149:ASP:OD2	6:J:401:HOH:O	2.22	0.41
2:M:96:ALA:O	2:M:120:ILE:HA	2.21	0.41
1:E:133:LEU:CD1	1:E:186:ASP:HB3	2.50	0.41
1:C:64:GLU:HB2	1:C:96:VAL:HG13	2.02	0.41
2:D:98:SER:HG	2:D:123:HIS:CE1	2.39	0.41
1:J:67:ASP:HA	1:J:68:PRO:HD2	1.95	0.41
1:J:97:ARG:HG2	1:L:207:ARG:HD3	2.03	0.41
2:K:121:LEU:HD11	2:K:172:ASP:HB3	2.03	0.41
1:L:75:TYR:HD1	1:L:103:VAL:HB	1.86	0.41
2:M:40:ILE:O	2:M:44:LEU:HB2	2.20	0.41
1:L:109:ALA:HB1	1:L:133:LEU:HD23	2.03	0.41
2:M:92:ALA:HB2	2:M:104:LEU:CD1	2.45	0.41
2:I:44:LEU:HD23	2:I:77:ILE:HD13	2.03	0.40
1:L:125:MET:SD	1:L:204:LEU:HD21	2.61	0.40
2:B:83:LEU:HD13	2:M:190:ILE:HG22	2.03	0.40
1:C:97:ARG:HH21	1:F:207:ARG:NE	2.20	0.40
2:I:50:LEU:O	2:I:53:ALA:HB3	2.22	0.40
2:G:121:LEU:HD11	2:G:172:ASP:HB3	2.02	0.40
1:C:93:MET:O	1:C:100:ILE:HD12	2.21	0.40
1:F:39:GLU:C	1:F:40:ARG:HG2	2.40	0.40
2:K:115:LEU:HD13	2:N:79:ASP:HB3	2.03	0.40
1:E:90:TYR:O	1:E:94:GLN:HG2	2.21	0.40
2:B:191:THR:CG2	2:B:192:ARG:N	2.84	0.40
1:C:208:LYS:NZ	1:H:93:MET:O	2.34	0.40
2:D:146:ILE:O	2:D:150:MET:HG2	2.22	0.40
2:G:35:GLU:O	2:G:35:GLU:HG3	2.21	0.40
2:G:71:ILE:O	2:G:75:MET:HG2	2.21	0.40
2:B:79:ASP:O	2:B:83:LEU:HG	2.22	0.40
2:D:32:LEU:HD11	2:D:36:VAL:HG22	2.04	0.40
2:M:148:LYS:CE	2:M:152:ARG:NH2	2.84	0.40
2:N:122:MET:HE2	2:N:122:MET:HB2	1.84	0.40

There are no symmetry-related clashes.

5.3 Torsion angles [i](#)

5.3.1 Protein backbone [i](#)

In the following table, the Percentiles column shows the percent Ramachandran outliers of the chain as a percentile score with respect to all X-ray entries followed by that with respect to entries of similar resolution.

The Analysed column shows the number of residues for which the backbone conformation was analysed, and the total number of residues.

Mol	Chain	Analysed	Favoured	Allowed	Outliers	Percentiles	
1	A	192/202 (95%)	184 (96%)	7 (4%)	1 (0%)	29	54
1	C	194/202 (96%)	188 (97%)	6 (3%)	0	100	100
1	E	191/202 (95%)	182 (95%)	9 (5%)	0	100	100
1	F	194/202 (96%)	186 (96%)	8 (4%)	0	100	100
1	H	194/202 (96%)	187 (96%)	7 (4%)	0	100	100
1	J	193/202 (96%)	182 (94%)	11 (6%)	0	100	100
1	L	191/202 (95%)	185 (97%)	6 (3%)	0	100	100
2	B	175/194 (90%)	171 (98%)	4 (2%)	0	100	100
2	D	173/194 (89%)	170 (98%)	3 (2%)	0	100	100
2	G	174/194 (90%)	168 (97%)	5 (3%)	1 (1%)	25	50
2	I	173/194 (89%)	169 (98%)	3 (2%)	1 (1%)	25	50
2	K	173/194 (89%)	170 (98%)	3 (2%)	0	100	100
2	M	174/194 (90%)	172 (99%)	2 (1%)	0	100	100
2	N	174/194 (90%)	171 (98%)	3 (2%)	0	100	100
All	All	2565/2772 (92%)	2485 (97%)	77 (3%)	3 (0%)	51	78

All (3) Ramachandran outliers are listed below:

Mol	Chain	Res	Type
2	I	94	GLY
2	G	94	GLY
1	A	48	VAL

5.3.2 Protein sidechains [i](#)

In the following table, the Percentiles column shows the percent sidechain outliers of the chain as a percentile score with respect to all X-ray entries followed by that with respect to entries of similar resolution.

The Analysed column shows the number of residues for which the sidechain conformation was analysed, and the total number of residues.

Mol	Chain	Analysed	Rotameric	Outliers	Percentiles	
1	A	160/167 (96%)	154 (96%)	6 (4%)	33	62
1	C	160/167 (96%)	149 (93%)	11 (7%)	15	35
1	E	157/167 (94%)	147 (94%)	10 (6%)	17	39
1	F	160/167 (96%)	151 (94%)	9 (6%)	21	45
1	H	161/167 (96%)	155 (96%)	6 (4%)	34	63
1	J	161/167 (96%)	149 (92%)	12 (8%)	13	31
1	L	157/167 (94%)	149 (95%)	8 (5%)	24	50
2	B	138/151 (91%)	133 (96%)	5 (4%)	35	64
2	D	136/151 (90%)	132 (97%)	4 (3%)	42	71
2	G	135/151 (89%)	130 (96%)	5 (4%)	34	63
2	I	135/151 (89%)	130 (96%)	5 (4%)	34	63
2	K	134/151 (89%)	130 (97%)	4 (3%)	41	70
2	M	134/151 (89%)	129 (96%)	5 (4%)	34	63
2	N	134/151 (89%)	129 (96%)	5 (4%)	34	63
All	All	2062/2226 (93%)	1967 (95%)	95 (5%)	25	54

All (95) residues with a non-rotameric sidechain are listed below:

Mol	Chain	Res	Type
1	A	36	LEU
1	A	43	PHE
1	A	64	GLU
1	A	65	SER
1	A	135	HIS
1	A	143	ILE
2	B	16	LEU
2	B	98	SER
2	B	123	HIS
2	B	150	MET
2	B	154	ASN
1	C	43	PHE
1	C	52	SER
1	C	64	GLU
1	C	70	ARG
1	C	87	MET

Continued on next page...

Continued from previous page...

Mol	Chain	Res	Type
1	C	105	LEU
1	C	131	ARG
1	C	135	HIS
1	C	138	SER
1	C	139	LEU
1	C	143	ILE
2	D	22	GLU
2	D	119	ARG
2	D	123	HIS
2	D	154	ASN
1	F	43	PHE
1	F	50	ASP
1	F	64	GLU
1	F	65	SER
1	F	105	LEU
1	F	136	GLN
1	F	143	ILE
1	F	207	ARG
1	F	210	SER
1	H	43	PHE
1	H	105	LEU
1	H	135	HIS
1	H	143	ILE
1	H	202	THR
1	H	208	LYS
2	I	18	ASP
2	I	43	ARG
2	I	123	HIS
2	I	154	ASN
2	I	156	GLU
1	J	14	TYR
1	J	15	ILE
1	J	40	ARG
1	J	43	PHE
1	J	64	GLU
1	J	86	LEU
1	J	97	ARG
1	J	105	LEU
1	J	135	HIS
1	J	138	SER
1	J	167	THR
1	J	208	LYS

Continued on next page...

Continued from previous page...

Mol	Chain	Res	Type
2	K	25	LEU
2	K	44	LEU
2	K	50	LEU
2	K	119	ARG
1	L	24	SER
1	L	36	LEU
1	L	43	PHE
1	L	64	GLU
1	L	97	ARG
1	L	105	LEU
1	L	148	SER
1	L	151	GLU
2	M	16	LEU
2	M	34	SER
2	M	123	HIS
2	M	126	LEU
2	M	154	ASN
2	N	16	LEU
2	N	18	ASP
2	N	95	MET
2	N	122	MET
2	N	123	HIS
1	E	20	ILE
1	E	43	PHE
1	E	64	GLU
1	E	65	SER
1	E	78	SER
1	E	87	MET
1	E	135	HIS
1	E	138	SER
1	E	143	ILE
1	E	167	THR
2	G	16	LEU
2	G	36	VAL
2	G	43	ARG
2	G	123	HIS
2	G	126	LEU

Sometimes sidechains can be flipped to improve hydrogen bonding and reduce clashes. All (5) such sidechains are listed below:

Mol	Chain	Res	Type
1	A	135	HIS

Continued on next page...

Continued from previous page...

Mol	Chain	Res	Type
1	H	171	HIS
2	K	154	ASN
2	N	154	ASN
1	E	94	GLN

5.3.3 RNA [i](#)

There are no RNA molecules in this entry.

5.4 Non-standard residues in protein, DNA, RNA chains [i](#)

There are no non-standard protein/DNA/RNA residues in this entry.

5.5 Carbohydrates [i](#)

There are no monosaccharides in this entry.

5.6 Ligand geometry [i](#)

35 ligands are modelled in this entry.

In the following table, the Counts columns list the number of bonds (or angles) for which Mogul statistics could be retrieved, the number of bonds (or angles) that are observed in the model and the number of bonds (or angles) that are defined in the Chemical Component Dictionary. The Link column lists molecule types, if any, to which the group is linked. The Z score for a bond length (or angle) is the number of standard deviations the observed value is removed from the expected value. A bond length (or angle) with $|Z| > 2$ is considered an outlier worth inspection. RMSZ is the root-mean-square of all Z scores of the bond lengths (or angles).

Mol	Type	Chain	Res	Link	Bond lengths			Bond angles		
					Counts	RMSZ	# Z > 2	Counts	RMSZ	# Z > 2
5	AV3	B	302	-	35,37,37	1.99	4 (11%)	47,52,52	3.59	21 (44%)
4	LEU	L	302	3	7,8,8	0.75	0	9,10,10	0.96	1 (11%)
5	AV3	K	301	-	35,37,37	2.08	7 (20%)	47,52,52	3.17	19 (40%)
3	S0R	K	302	4	15,16,17	0.42	0	18,20,22	0.64	0
3	S0R	L	301	4	15,16,17	0.54	0	18,20,22	0.78	0
3	S0R	F	301	4	15,16,17	0.66	0	18,20,22	0.68	0
3	S0R	I	302	4	15,16,17	0.46	0	18,20,22	0.80	0
4	LEU	F	302	3	7,8,8	0.80	0	9,10,10	0.72	0
4	LEU	M	302	3	7,8,8	0.77	0	9,10,10	0.78	0

Mol	Type	Chain	Res	Link	Bond lengths			Bond angles		
					Counts	RMSZ	# Z > 2	Counts	RMSZ	# Z > 2
4	LEU	K	303	3	7,8,8	0.83	0	9,10,10	0.57	0
3	S0R	E	301	4	15,16,17	0.72	0	18,20,22	0.98	1 (5%)
5	AV3	G	301	-	35,37,37	2.03	5 (14%)	47,52,52	3.46	16 (34%)
4	LEU	E	302	3	7,8,8	0.75	0	9,10,10	0.84	0
4	LEU	C	302	3	7,8,8	0.81	0	9,10,10	0.71	0
3	S0R	D	302	4	15,16,17	0.41	0	18,20,22	1.10	1 (5%)
3	S0R	J	301	4	15,16,17	0.42	0	18,20,22	0.77	0
4	LEU	I	303	3	7,8,8	0.71	0	9,10,10	0.92	1 (11%)
4	LEU	J	302	3	7,8,8	0.83	0	9,10,10	0.71	0
5	AV3	B	301	-	35,37,37	2.05	5 (14%)	47,52,52	3.44	20 (42%)
4	LEU	G	303	3	7,8,8	0.72	0	9,10,10	0.76	0
3	S0R	A	301	4	15,16,17	0.62	0	18,20,22	0.78	0
5	AV3	I	301	-	35,37,37	2.18	9 (25%)	47,52,52	3.30	21 (44%)
3	S0R	G	302	4	15,16,17	0.52	0	18,20,22	0.69	0
3	S0R	M	301	4	15,16,17	0.62	0	18,20,22	0.80	1 (5%)
5	AV3	N	301	-	35,37,37	2.05	7 (20%)	47,52,52	3.44	20 (42%)
3	S0R	B	303	4	15,16,17	0.45	0	18,20,22	0.87	1 (5%)
5	AV3	D	301	-	35,37,37	2.11	5 (14%)	47,52,52	3.59	19 (40%)
3	S0R	N	302	4	15,16,17	0.55	0	18,20,22	0.65	0
3	S0R	C	301	4	15,16,17	0.44	0	18,20,22	0.78	0
4	LEU	B	304	3	7,8,8	0.74	0	9,10,10	0.70	0
4	LEU	H	302	3	7,8,8	0.77	0	9,10,10	0.75	0
4	LEU	N	303	3	7,8,8	0.69	0	9,10,10	0.95	0
3	S0R	H	301	4	15,16,17	0.65	0	18,20,22	1.02	0
4	LEU	D	303	3	7,8,8	0.68	0	9,10,10	0.84	0
4	LEU	A	302	3	7,8,8	0.85	0	9,10,10	0.63	0

In the following table, the Chirals column lists the number of chiral outliers, the number of chiral centers analysed, the number of these observed in the model and the number defined in the Chemical Component Dictionary. Similar counts are reported in the Torsion and Rings columns. '-' means no outliers of that kind were identified.

Mol	Type	Chain	Res	Link	Chirals	Torsions	Rings
5	AV3	B	302	-	-	4/13/40/40	0/5/5/5
4	LEU	L	302	3	-	2/8/8/8	-
5	AV3	K	301	-	-	3/13/40/40	0/5/5/5
3	S0R	K	302	4	-	2/13/14/16	0/1/1/1
3	S0R	L	301	4	-	0/13/14/16	0/1/1/1
3	S0R	F	301	4	-	2/13/14/16	0/1/1/1

Continued on next page...

Continued from previous page...

Mol	Type	Chain	Res	Link	Chirals	Torsions	Rings
3	S0R	I	302	4	-	2/13/14/16	0/1/1/1
4	LEU	F	302	3	-	0/8/8/8	-
4	LEU	M	302	3	-	7/8/8/8	-
4	LEU	K	303	3	-	6/8/8/8	-
3	S0R	E	301	4	-	3/13/14/16	0/1/1/1
5	AV3	G	301	-	-	2/13/40/40	0/5/5/5
4	LEU	E	302	3	-	0/8/8/8	-
4	LEU	C	302	3	-	2/8/8/8	-
3	S0R	D	302	4	-	1/13/14/16	0/1/1/1
3	S0R	J	301	4	-	3/13/14/16	0/1/1/1
4	LEU	I	303	3	-	4/8/8/8	-
4	LEU	J	302	3	-	1/8/8/8	-
5	AV3	B	301	-	-	2/13/40/40	0/5/5/5
4	LEU	G	303	3	-	6/8/8/8	-
3	S0R	A	301	4	-	5/13/14/16	0/1/1/1
5	AV3	I	301	-	-	3/13/40/40	0/5/5/5
3	S0R	G	302	4	-	2/13/14/16	0/1/1/1
3	S0R	M	301	4	-	1/13/14/16	0/1/1/1
5	AV3	N	301	-	-	3/13/40/40	0/5/5/5
3	S0R	B	303	4	-	1/13/14/16	0/1/1/1
5	AV3	D	301	-	-	4/13/40/40	0/5/5/5
3	S0R	N	302	4	-	2/13/14/16	0/1/1/1
3	S0R	C	301	4	-	1/13/14/16	0/1/1/1
4	LEU	B	304	3	-	4/8/8/8	-
4	LEU	H	302	3	-	4/8/8/8	-
4	LEU	N	303	3	-	6/8/8/8	-
3	S0R	H	301	4	-	0/13/14/16	0/1/1/1
4	LEU	D	303	3	-	5/8/8/8	-
4	LEU	A	302	3	-	1/8/8/8	-

All (42) bond length outliers are listed below:

Mol	Chain	Res	Type	Atoms	Z	Observed(Å)	Ideal(Å)
5	D	301	AV3	C10-N01	7.77	1.35	1.29
5	I	301	AV3	C10-N01	7.63	1.35	1.29
5	B	302	AV3	C10-N01	7.56	1.34	1.29
5	B	301	AV3	C10-N01	7.40	1.34	1.29
5	G	301	AV3	C10-N01	7.37	1.34	1.29

Continued on next page...

Continued from previous page...

Mol	Chain	Res	Type	Atoms	Z	Observed(Å)	Ideal(Å)
5	N	301	AV3	C10-N01	6.91	1.34	1.29
5	K	301	AV3	C10-N01	6.66	1.34	1.29
5	N	301	AV3	C07-C01	-5.95	1.41	1.50
5	I	301	AV3	C07-C01	-5.85	1.41	1.50
5	K	301	AV3	C07-C01	-5.80	1.42	1.50
5	G	301	AV3	C07-C01	-5.79	1.42	1.50
5	B	301	AV3	C07-C01	-5.75	1.42	1.50
5	D	301	AV3	C07-C01	-5.74	1.42	1.50
5	B	302	AV3	C07-C01	-5.47	1.42	1.50
5	K	301	AV3	C03-C02	-5.09	1.37	1.43
5	I	301	AV3	C03-C02	-5.03	1.37	1.43
5	N	301	AV3	C03-C02	-4.80	1.37	1.43
5	G	301	AV3	C03-C02	-4.61	1.37	1.43
5	B	301	AV3	C03-C02	-4.55	1.37	1.43
5	D	301	AV3	C03-C02	-4.42	1.38	1.43
5	B	302	AV3	C03-C02	-3.93	1.38	1.43
5	D	301	AV3	C02-C06	-3.25	1.37	1.42
5	K	301	AV3	C02-C06	-3.01	1.37	1.42
5	I	301	AV3	C02-C06	-2.93	1.37	1.42
5	B	302	AV3	C02-C06	-2.85	1.37	1.42
5	B	301	AV3	C02-C06	-2.82	1.37	1.42
5	N	301	AV3	C02-C06	-2.64	1.38	1.42
5	N	301	AV3	C06-N03	-2.40	1.33	1.37
5	G	301	AV3	C02-C06	-2.36	1.38	1.42
5	I	301	AV3	C04-N01	-2.35	1.35	1.39
5	I	301	AV3	C11-C06	-2.34	1.38	1.41
5	N	301	AV3	C11-C06	-2.29	1.38	1.41
5	K	301	AV3	C11-C13	2.28	1.40	1.36
5	N	301	AV3	C04-N01	-2.25	1.35	1.39
5	D	301	AV3	C06-N03	-2.22	1.33	1.37
5	I	301	AV3	C09-C05	-2.21	1.36	1.39
5	G	301	AV3	C04-N01	-2.14	1.35	1.39
5	I	301	AV3	C11-C13	2.13	1.40	1.36
5	I	301	AV3	C06-N03	-2.13	1.33	1.37
5	K	301	AV3	C04-N01	-2.12	1.35	1.39
5	B	301	AV3	C11-C13	2.03	1.40	1.36
5	K	301	AV3	C06-N03	-2.02	1.33	1.37

All (142) bond angle outliers are listed below:

Mol	Chain	Res	Type	Atoms	Z	Observed(°)	Ideal(°)
5	D	301	AV3	C19-C10-N01	16.96	134.37	122.43

Continued on next page...

Continued from previous page...

Mol	Chain	Res	Type	Atoms	Z	Observed(°)	Ideal(°)
5	B	302	AV3	C19-C10-N01	15.96	133.66	122.43
5	G	301	AV3	C19-C10-N01	15.66	133.46	122.43
5	B	301	AV3	C19-C10-N01	15.42	133.28	122.43
5	I	301	AV3	C19-C10-N01	15.39	133.26	122.43
5	N	301	AV3	C19-C10-N01	14.39	132.56	122.43
5	K	301	AV3	C19-C10-N01	13.98	132.27	122.43
5	G	301	AV3	C03-C02-C06	7.81	119.82	114.73
5	B	302	AV3	C03-C02-C06	7.58	119.67	114.73
5	N	301	AV3	C02-C03-N02	-7.54	118.02	124.37
5	N	301	AV3	C03-C02-C06	7.02	119.30	114.73
5	B	302	AV3	C02-C03-N02	-6.92	118.55	124.37
5	D	301	AV3	C19-C10-C07	-6.63	115.22	123.68
5	G	301	AV3	C02-C03-N02	-6.61	118.81	124.37
5	D	301	AV3	C02-C03-N02	-6.55	118.86	124.37
5	B	301	AV3	C03-C02-C06	6.35	118.87	114.73
5	K	301	AV3	C02-C03-N02	-6.26	119.10	124.37
5	G	301	AV3	C19-C10-C07	-6.23	115.73	123.68
5	D	301	AV3	C03-C02-C06	6.21	118.78	114.73
5	I	301	AV3	C03-C02-C06	6.21	118.78	114.73
5	K	301	AV3	C03-C02-C06	6.20	118.77	114.73
5	N	301	AV3	C21-N04-C20	6.17	110.05	104.04
5	B	302	AV3	C19-C10-C07	-6.07	115.94	123.68
5	B	301	AV3	C02-C03-N02	-6.00	119.32	124.37
5	I	301	AV3	C19-C10-C07	-5.83	116.25	123.68
5	I	301	AV3	C02-C03-N02	-5.76	119.52	124.37
5	B	301	AV3	C19-C10-C07	-5.55	116.61	123.68
5	G	301	AV3	C09-O01-C03	5.42	125.76	117.82
5	D	301	AV3	N03-C14-N02	-5.30	120.39	128.68
5	K	301	AV3	C19-C10-C07	-5.09	117.19	123.68
5	K	301	AV3	N03-C14-N02	-4.93	120.97	128.68
5	B	301	AV3	N03-C14-N02	-4.93	120.98	128.68
5	N	301	AV3	C19-C10-C07	-4.89	117.45	123.68
5	B	302	AV3	N03-C14-N02	-4.88	121.05	128.68
5	G	301	AV3	N03-C14-N02	-4.82	121.14	128.68
5	N	301	AV3	N03-C14-N02	-4.82	121.15	128.68
5	I	301	AV3	N03-C14-N02	-4.80	121.17	128.68
5	D	301	AV3	C09-O01-C03	4.68	124.67	117.82
5	B	302	AV3	C09-O01-C03	4.60	124.55	117.82
5	B	301	AV3	C04-N01-C10	4.54	109.54	107.03
5	B	301	AV3	C21-N04-C20	4.51	108.43	104.04
5	B	301	AV3	C09-O01-C03	4.43	124.31	117.82
5	N	301	AV3	C04-N01-C10	4.34	109.44	107.03

Continued on next page...

Continued from previous page...

Mol	Chain	Res	Type	Atoms	Z	Observed(°)	Ideal(°)
5	I	301	AV3	C04-N01-C10	4.13	109.32	107.03
5	D	301	AV3	C21-N04-C20	4.12	108.06	104.04
5	B	302	AV3	O03-C12-C08	-4.11	119.93	125.24
5	D	301	AV3	C14-N03-C06	3.94	120.83	115.40
5	D	301	AV3	C04-N01-C10	3.90	109.19	107.03
5	N	301	AV3	O03-C12-C08	-3.87	120.24	125.24
5	B	302	AV3	C21-N04-C20	3.82	107.77	104.04
5	K	301	AV3	C04-N01-C10	3.81	109.14	107.03
5	B	302	AV3	C04-N01-C10	3.80	109.14	107.03
5	K	301	AV3	C09-O01-C03	3.80	123.38	117.82
5	B	301	AV3	O03-C12-C08	-3.77	120.37	125.24
5	K	301	AV3	O03-C12-C08	-3.73	120.42	125.24
5	B	302	AV3	C14-N03-C06	3.67	120.45	115.40
5	N	301	AV3	C14-N02-C03	3.65	121.66	115.88
5	G	301	AV3	C02-C06-N03	-3.64	118.96	122.83
5	B	302	AV3	O03-C12-C13	3.61	120.43	115.41
5	B	301	AV3	C14-N03-C06	3.60	120.36	115.40
5	B	301	AV3	C25-C20-N04	3.56	108.08	103.92
5	G	301	AV3	C14-N03-C06	3.54	120.28	115.40
5	G	301	AV3	O03-C12-C08	-3.54	120.66	125.24
5	I	301	AV3	O03-C12-C08	-3.46	120.77	125.24
5	I	301	AV3	C14-N03-C06	3.43	120.13	115.40
5	D	301	AV3	C14-N02-C03	3.41	121.28	115.88
5	N	301	AV3	O03-C12-C13	3.37	120.10	115.41
5	K	301	AV3	C14-N03-C06	3.33	119.99	115.40
5	N	301	AV3	C09-O01-C03	3.29	122.64	117.82
5	K	301	AV3	C14-N02-C03	3.25	121.03	115.88
5	G	301	AV3	C14-N02-C03	3.23	121.00	115.88
5	B	302	AV3	C02-C06-N03	-3.20	119.43	122.83
5	I	301	AV3	O03-C12-C13	3.19	119.86	115.41
5	D	301	AV3	C24-C21-N04	3.15	107.60	103.92
5	B	302	AV3	C14-N02-C03	3.14	120.85	115.88
5	B	302	AV3	C24-C21-N04	3.13	107.58	103.92
5	N	301	AV3	C23-O03-C12	3.13	122.26	117.53
5	N	301	AV3	C24-C21-N04	3.11	107.55	103.92
5	G	301	AV3	C04-N01-C10	3.10	108.75	107.03
5	K	301	AV3	C21-N04-C20	3.09	107.05	104.04
5	B	301	AV3	C14-N02-C03	3.02	120.67	115.88
5	N	301	AV3	C25-C20-N04	2.93	107.34	103.92
5	G	301	AV3	C22-O02-C13	2.92	124.84	117.69
5	B	301	AV3	O03-C12-C13	2.88	119.42	115.41
5	N	301	AV3	C14-N03-C06	2.86	119.34	115.40

Continued on next page...

Continued from previous page...

Mol	Chain	Res	Type	Atoms	Z	Observed(°)	Ideal(°)
5	I	301	AV3	C14-N02-C03	2.85	120.40	115.88
5	B	301	AV3	C02-C06-N03	-2.85	119.80	122.83
5	D	301	AV3	C25-C20-N04	2.83	107.23	103.92
5	D	301	AV3	O03-C12-C08	-2.81	121.60	125.24
5	D	301	AV3	C02-C06-N03	-2.78	119.87	122.83
5	B	302	AV3	C25-C20-N04	2.77	107.16	103.92
5	B	301	AV3	C24-C21-N04	2.75	107.14	103.92
5	I	301	AV3	C21-N04-C20	2.75	106.72	104.04
5	B	302	AV3	C11-C06-N03	2.71	121.06	117.97
5	N	301	AV3	C22-O02-C13	2.69	124.28	117.69
5	G	301	AV3	C11-C06-N03	2.68	121.02	117.97
5	I	301	AV3	C02-C06-N03	-2.67	119.99	122.83
5	K	301	AV3	O03-C12-C13	2.66	119.12	115.41
5	B	302	AV3	O02-C13-C11	-2.65	120.70	125.19
5	G	301	AV3	O01-C03-N02	2.65	123.07	119.58
3	D	302	S0R	C1-C-N	2.64	122.12	117.06
5	N	301	AV3	O01-C03-C02	2.59	120.15	115.69
5	I	301	AV3	O01-C03-N02	2.57	122.97	119.58
5	I	301	AV3	C11-C06-N03	2.56	120.89	117.97
5	I	301	AV3	F01-C05-C01	2.55	122.41	119.32
5	I	301	AV3	C23-O03-C12	2.55	121.37	117.53
5	B	301	AV3	C23-O03-C12	2.54	121.37	117.53
5	G	301	AV3	O03-C12-C13	2.54	118.94	115.41
5	K	301	AV3	C02-C06-N03	-2.53	120.14	122.83
5	I	301	AV3	C09-O01-C03	2.48	121.46	117.82
5	K	301	AV3	C24-C21-N04	2.47	106.81	103.92
5	B	301	AV3	O01-C03-N02	2.43	122.79	119.58
5	D	301	AV3	O01-C03-C02	2.41	119.84	115.69
5	I	301	AV3	C17-N04-C20	2.38	119.90	113.29
5	G	301	AV3	C23-O03-C12	2.38	121.11	117.53
5	B	301	AV3	C11-C06-N03	2.36	120.67	117.97
5	N	301	AV3	C07-C10-N01	-2.30	109.99	115.18
3	E	301	S0R	C2-C1-C6	2.30	121.86	118.59
5	D	301	AV3	O02-C13-C11	-2.28	121.33	125.19
5	K	301	AV3	F01-C05-C01	2.28	122.08	119.32
5	B	302	AV3	C23-O03-C12	2.27	120.96	117.53
3	B	303	S0R	C7-CA-N	2.26	113.82	109.73
5	B	301	AV3	C07-C10-N01	-2.25	110.11	115.18
5	K	301	AV3	C23-O03-C12	2.23	120.89	117.53
5	I	301	AV3	O02-C13-C11	-2.19	121.49	125.19
5	D	301	AV3	C18-C17-N04	-2.18	108.34	113.84
5	N	301	AV3	C02-C06-N03	-2.17	120.52	122.83

Continued on next page...

Continued from previous page...

Mol	Chain	Res	Type	Atoms	Z	Observed(°)	Ideal(°)
5	D	301	AV3	C22-O02-C13	2.17	122.99	117.69
5	K	301	AV3	O01-C03-N02	2.15	122.41	119.58
5	D	301	AV3	C07-C10-N01	-2.12	110.40	115.18
5	B	302	AV3	C07-C10-N01	-2.12	110.40	115.18
5	B	301	AV3	O02-C13-C11	-2.12	121.61	125.19
5	B	302	AV3	O01-C03-C02	2.09	119.30	115.69
4	L	302	LEU	OXT-C-CA	2.09	120.50	113.38
5	I	301	AV3	C07-C10-N01	-2.08	110.49	115.18
5	B	302	AV3	O02-C13-C12	2.07	120.01	115.73
3	M	301	S0R	O1-C-C1	-2.07	117.25	120.94
5	I	301	AV3	C08-C02-C06	2.06	121.47	118.94
5	K	301	AV3	C07-C10-N01	-2.06	110.54	115.18
5	K	301	AV3	C16-C09-C05	2.06	120.95	117.72
4	I	303	LEU	CB-CA-N	-2.05	105.75	110.32
5	N	301	AV3	O02-C13-C11	-2.01	121.79	125.19

There are no chirality outliers.

All (94) torsion outliers are listed below:

Mol	Chain	Res	Type	Atoms
3	A	301	S0R	C7-CA-CB-CG
3	A	301	S0R	O-C7-CA-CB
3	B	303	S0R	O-C7-CA-CB
3	J	301	S0R	O-C7-CA-CB
3	E	301	S0R	O-C7-CA-CB
4	A	302	LEU	N-CA-CB-CG
4	B	304	LEU	O-C-CA-N
4	D	303	LEU	O-C-CA-N
4	H	302	LEU	N-CA-CB-CG
4	I	303	LEU	O-C-CA-N
4	I	303	LEU	N-CA-CB-CG
4	I	303	LEU	C-CA-CB-CG
4	K	303	LEU	O-C-CA-N
4	K	303	LEU	N-CA-CB-CG
4	L	302	LEU	N-CA-CB-CG
4	N	303	LEU	O-C-CA-N
4	N	303	LEU	N-CA-CB-CG
4	G	303	LEU	O-C-CA-N
4	G	303	LEU	N-CA-CB-CG
4	G	303	LEU	C-CA-CB-CG
5	I	301	AV3	C18-C17-N04-C20
5	I	301	AV3	C18-C17-N04-C21

Continued on next page...

Continued from previous page...

Mol	Chain	Res	Type	Atoms
5	K	301	AV3	C18-C17-N04-C21
5	G	301	AV3	C18-C17-N04-C20
5	G	301	AV3	C18-C17-N04-C21
3	D	302	S0R	N-CA-CB-CG
4	N	303	LEU	C-CA-CB-CG
5	B	301	AV3	C17-C18-C22-O02
4	D	303	LEU	OXT-C-CA-N
5	B	301	AV3	N04-C17-C18-C22
4	M	302	LEU	CA-CB-CG-CD1
4	M	302	LEU	CA-CB-CG-CD2
3	E	301	S0R	CA-CB-CG-CD1
3	I	302	S0R	CA-CB-CG-CD2
3	N	302	S0R	CA-CB-CG-CD2
3	E	301	S0R	CA-CB-CG-CD2
3	G	302	S0R	CA-CB-CG-CD1
5	K	301	AV3	C17-C18-C22-O02
4	I	303	LEU	OXT-C-CA-N
3	I	302	S0R	CA-CB-CG-CD1
3	N	302	S0R	CA-CB-CG-CD1
4	K	303	LEU	OXT-C-CA-N
4	G	303	LEU	OXT-C-CA-N
3	A	301	S0R	N-CA-CB-CG
3	A	301	S0R	CA-CB-CG-CD1
4	B	304	LEU	OXT-C-CA-N
4	N	303	LEU	OXT-C-CA-N
3	G	302	S0R	CA-CB-CG-CD2
3	K	302	S0R	CA-CB-CG-CD1
4	M	302	LEU	OXT-C-CA-N
5	B	302	AV3	N04-C17-C18-C22
5	D	301	AV3	N04-C17-C18-C22
3	F	301	S0R	N-CA-CB-CG
5	B	302	AV3	C18-C17-N04-C20
5	D	301	AV3	C18-C17-N04-C20
5	K	301	AV3	N04-C17-C18-C22
3	C	301	S0R	C7-CA-CB-CG
3	F	301	S0R	C7-CA-CB-CG
3	J	301	S0R	C7-CA-CB-CG
5	B	302	AV3	C12-C13-O02-C22
4	M	302	LEU	O-C-CA-N
4	D	303	LEU	O-C-CA-CB
4	D	303	LEU	OXT-C-CA-CB
5	D	301	AV3	C12-C13-O02-C22

Continued on next page...

Continued from previous page...

Mol	Chain	Res	Type	Atoms
3	K	302	S0R	CA-CB-CG-CD2
4	H	302	LEU	C-CA-CB-CG
5	N	301	AV3	C17-C18-C22-O02
5	I	301	AV3	N04-C17-C18-C22
4	C	302	LEU	CA-CB-CG-CD1
4	H	302	LEU	CA-CB-CG-CD1
4	B	304	LEU	N-CA-CB-CG
4	D	303	LEU	N-CA-CB-CG
5	N	301	AV3	N04-C17-C18-C22
5	N	301	AV3	C18-C17-N04-C20
4	K	303	LEU	C-CA-CB-CG
4	H	302	LEU	CA-CB-CG-CD2
3	J	301	S0R	N-CA-CB-CG
4	M	302	LEU	O-C-CA-CB
4	N	303	LEU	O-C-CA-CB
5	B	302	AV3	C11-C13-O02-C22
5	D	301	AV3	C11-C13-O02-C22
4	M	302	LEU	OXT-C-CA-CB
4	N	303	LEU	OXT-C-CA-CB
4	K	303	LEU	OXT-C-CA-CB
4	C	302	LEU	CA-CB-CG-CD2
4	M	302	LEU	C-CA-CB-CG
4	L	302	LEU	C-CA-CB-CG
4	K	303	LEU	O-C-CA-CB
4	J	302	LEU	N-CA-CB-CG
3	A	301	S0R	CA-CB-CG-CD2
4	G	303	LEU	O-C-CA-CB
4	G	303	LEU	OXT-C-CA-CB
4	B	304	LEU	C-CA-CB-CG
3	M	301	S0R	N-CA-CB-CG

There are no ring outliers.

17 monomers are involved in 39 short contacts:

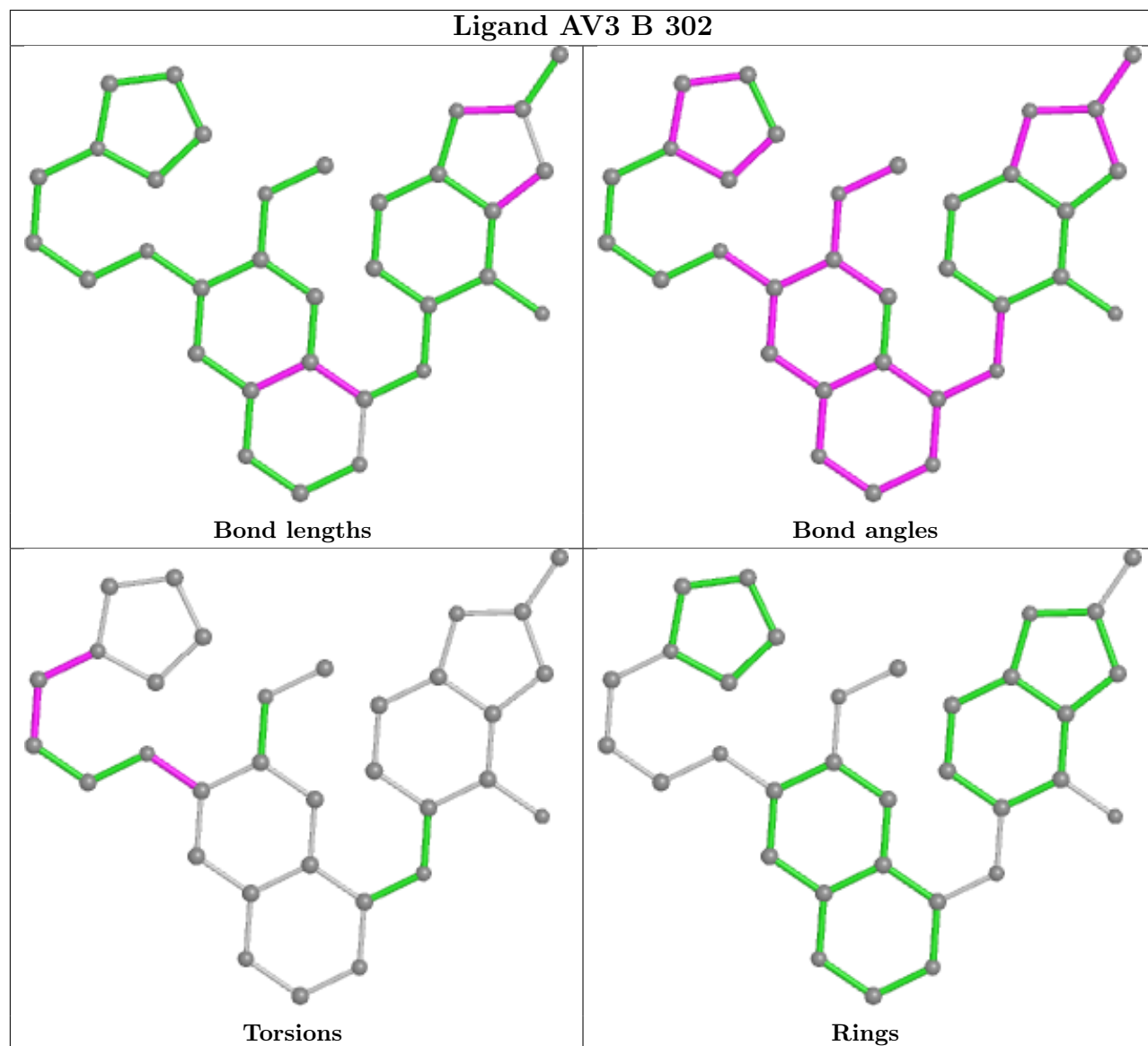
Mol	Chain	Res	Type	Clashes	Symm-Clashes
4	L	302	LEU	5	0
5	K	301	AV3	2	0
3	K	302	S0R	1	0
3	L	301	S0R	2	0
4	F	302	LEU	3	0
4	M	302	LEU	4	0
4	K	303	LEU	4	0

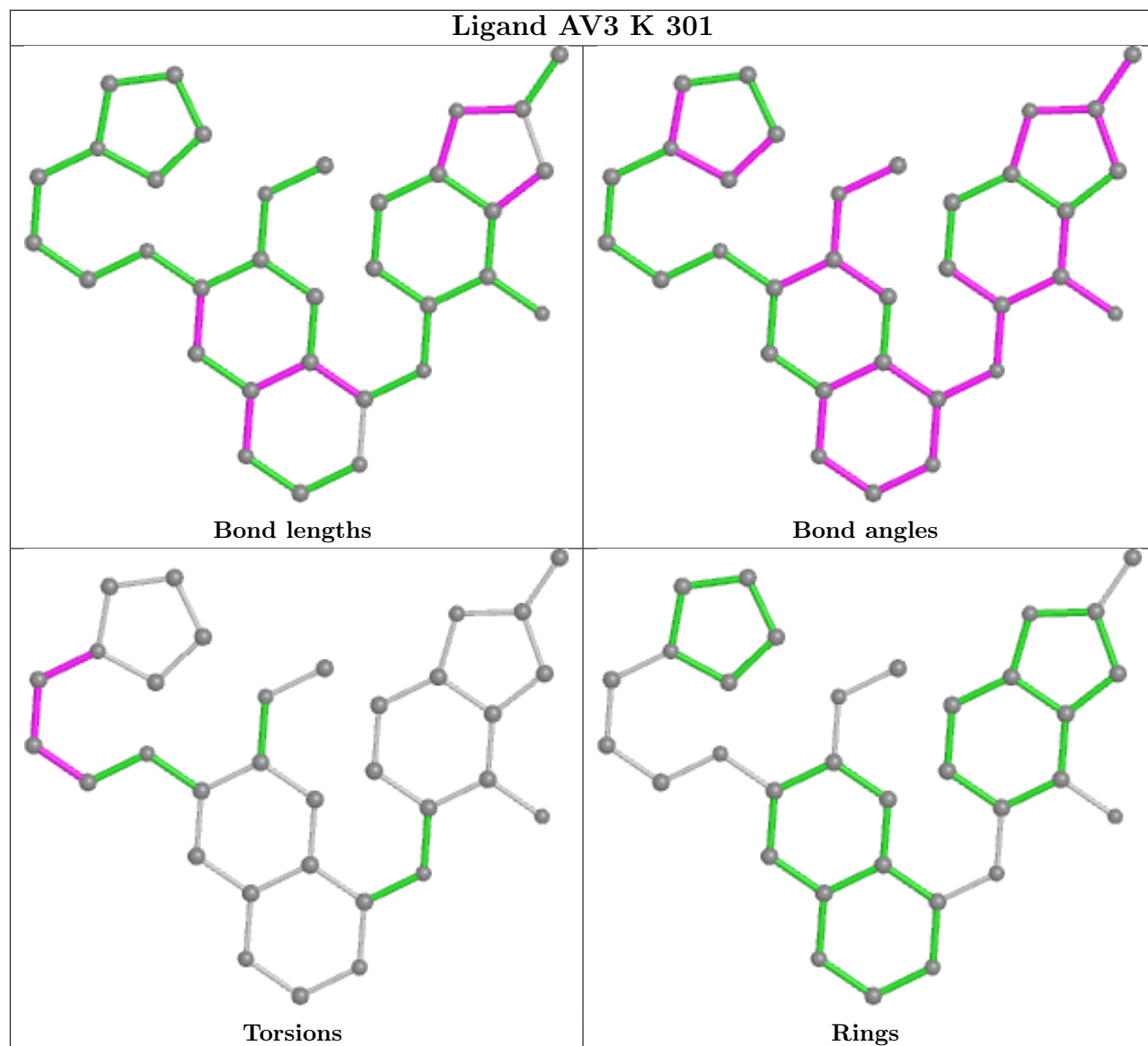
Continued on next page...

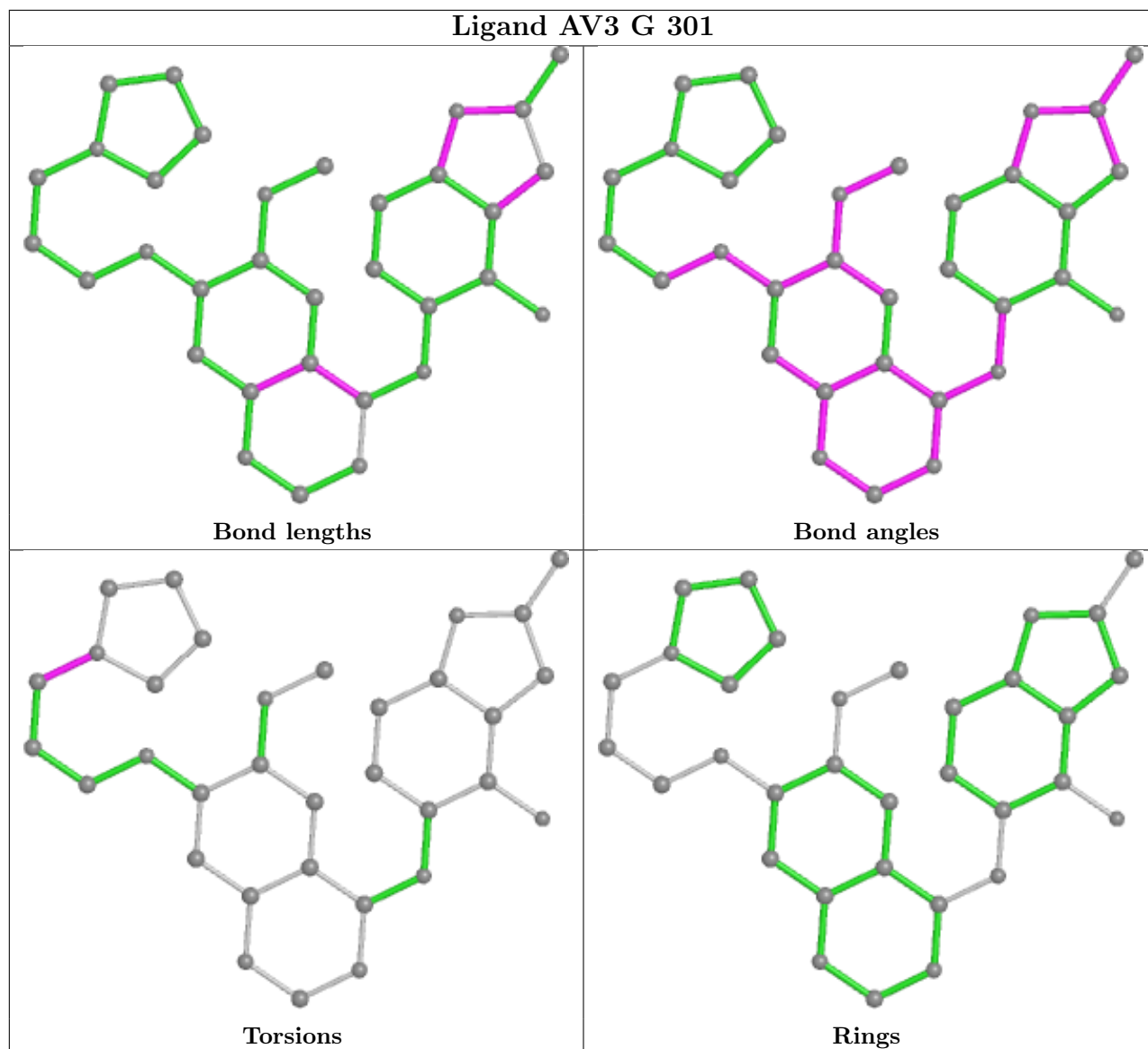
Continued from previous page...

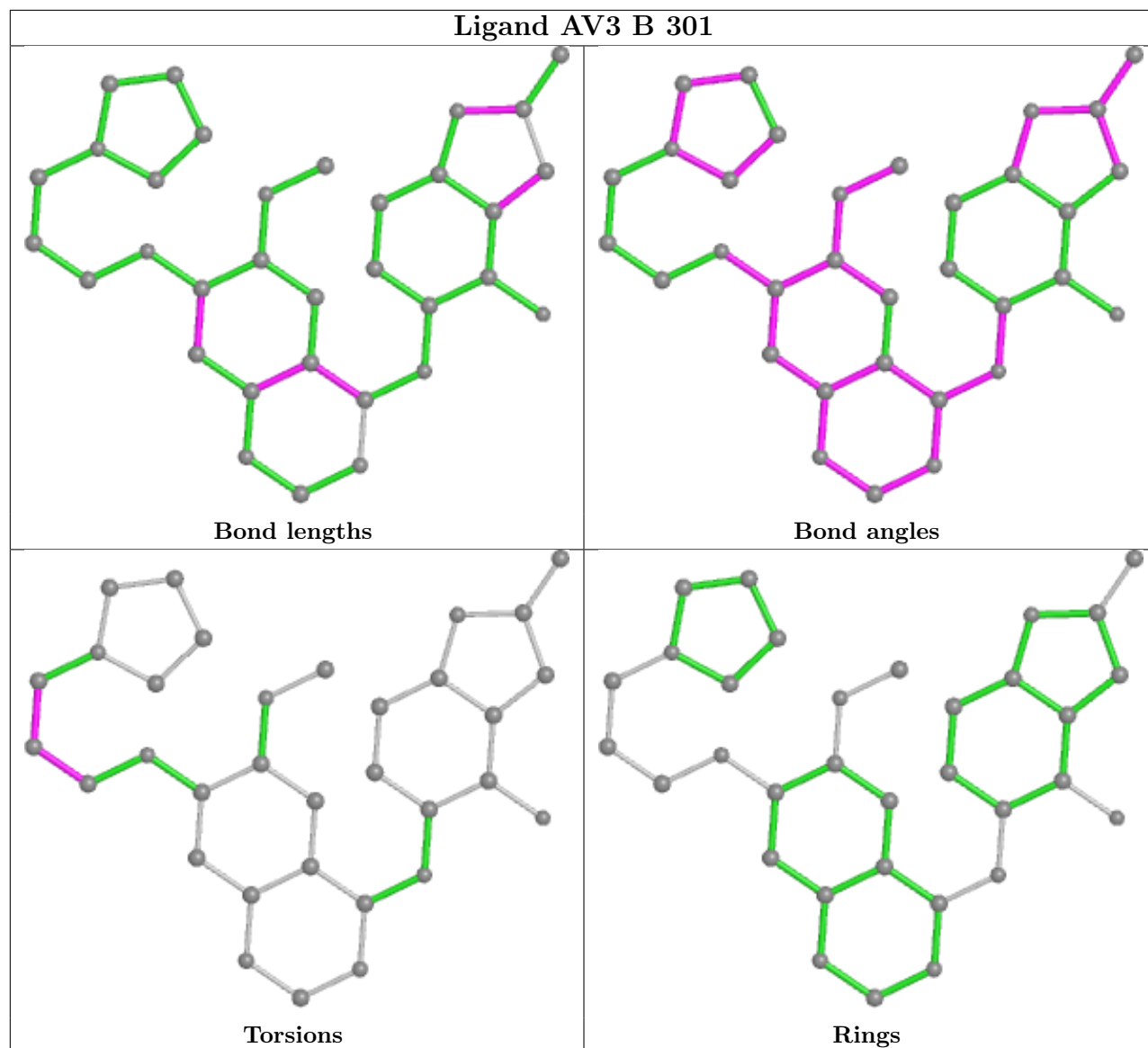
Mol	Chain	Res	Type	Clashes	Symm-Clashes
4	C	302	LEU	1	0
3	J	301	S0R	2	0
4	I	303	LEU	3	0
4	J	302	LEU	2	0
4	G	303	LEU	3	0
3	C	301	S0R	1	0
4	B	304	LEU	2	0
4	H	302	LEU	1	0
4	N	303	LEU	3	0
4	D	303	LEU	3	0

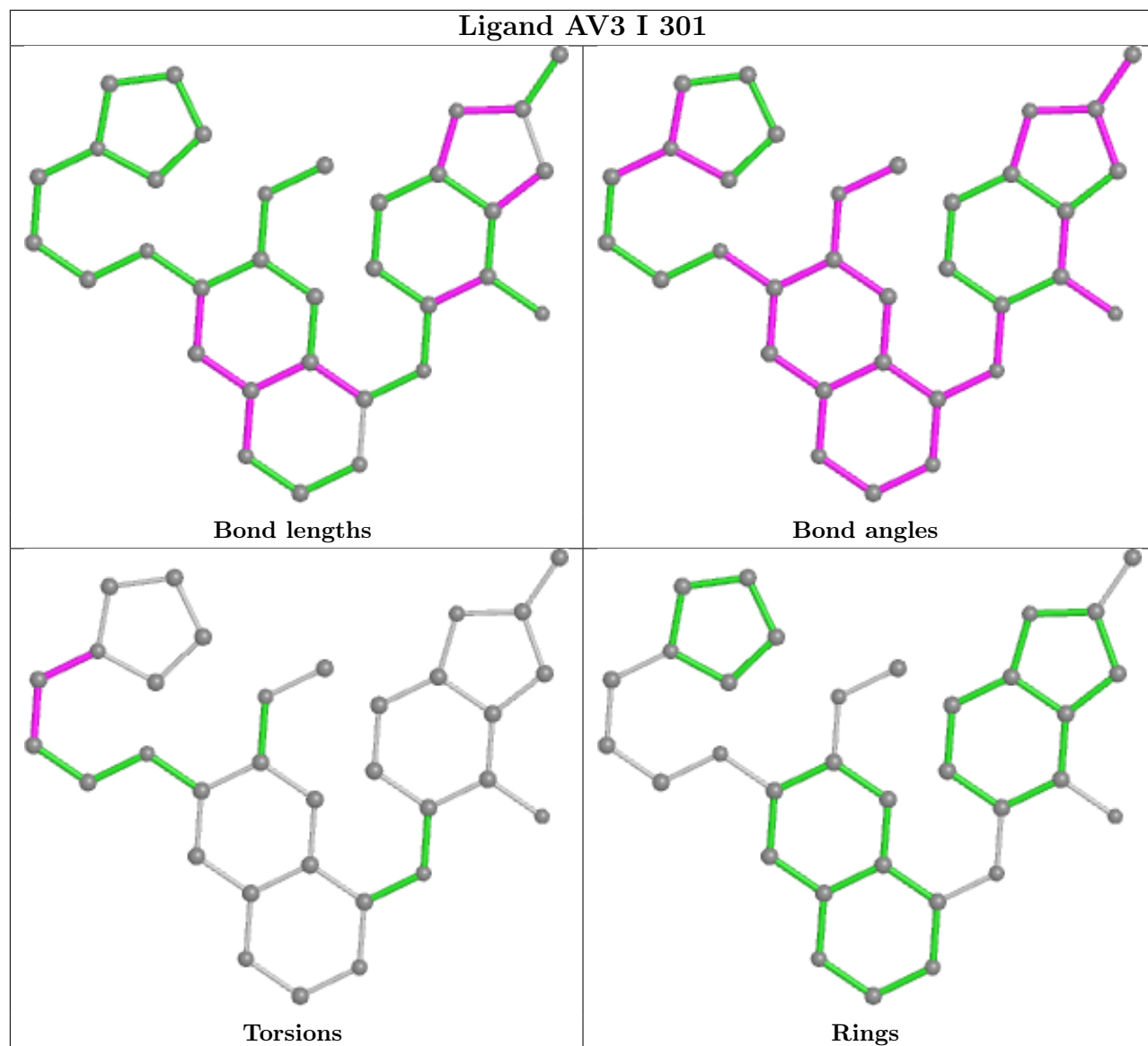
The following is a two-dimensional graphical depiction of Mogul quality analysis of bond lengths, bond angles, torsion angles, and ring geometry for all instances of the Ligand of Interest. In addition, ligands with molecular weight > 250 and outliers as shown on the validation Tables will also be included. For torsion angles, if less than 5% of the Mogul distribution of torsion angles is within 10 degrees of the torsion angle in question, then that torsion angle is considered an outlier. Any bond that is central to one or more torsion angles identified as an outlier by Mogul will be highlighted in the graph. For rings, the root-mean-square deviation (RMSD) between the ring in question and similar rings identified by Mogul is calculated over all ring torsion angles. If the average RMSD is greater than 60 degrees and the minimal RMSD between the ring in question and any Mogul-identified rings is also greater than 60 degrees, then that ring is considered an outlier. The outliers are highlighted in purple. The color gray indicates Mogul did not find sufficient equivalents in the CSD to analyse the geometry.

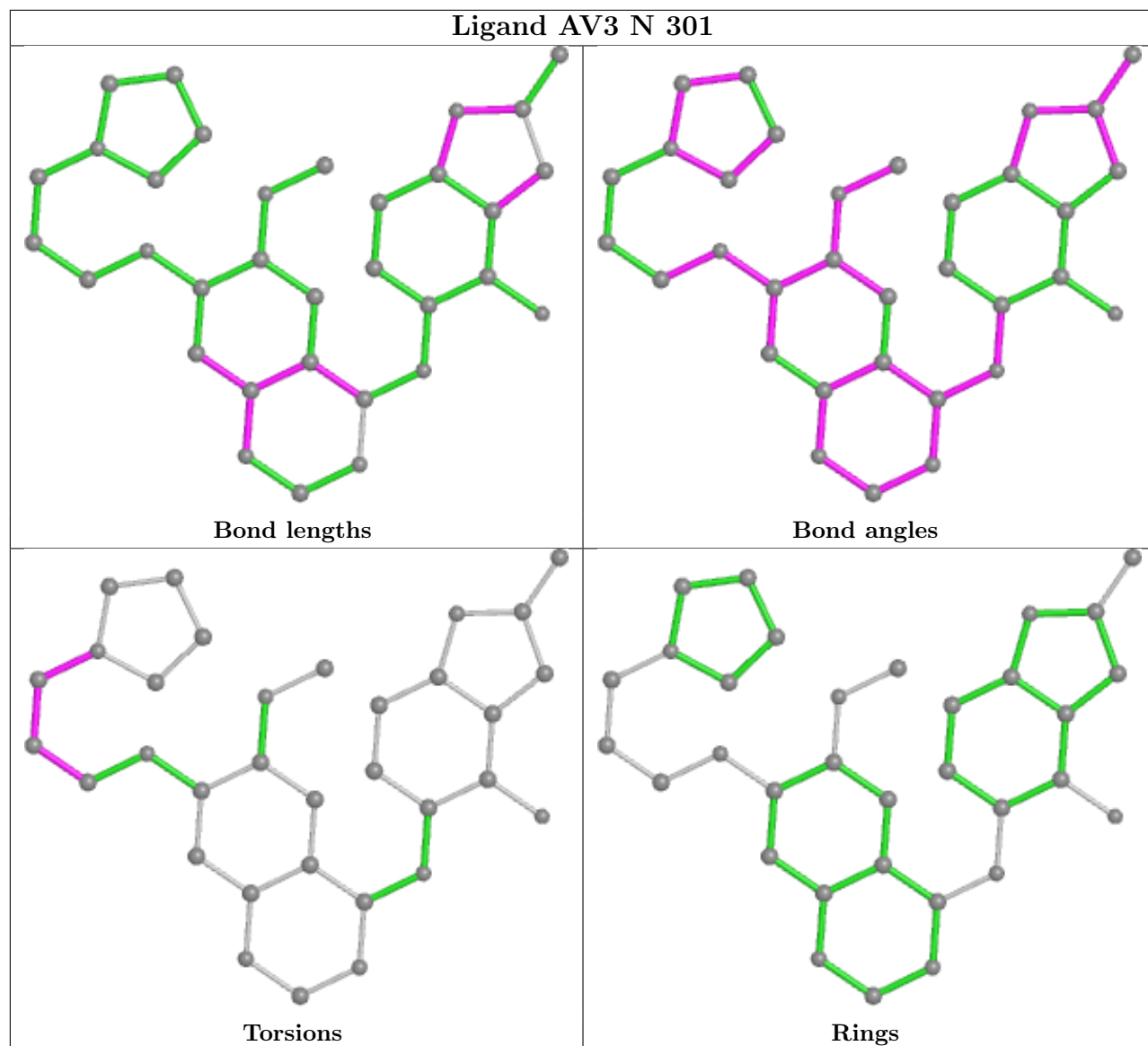


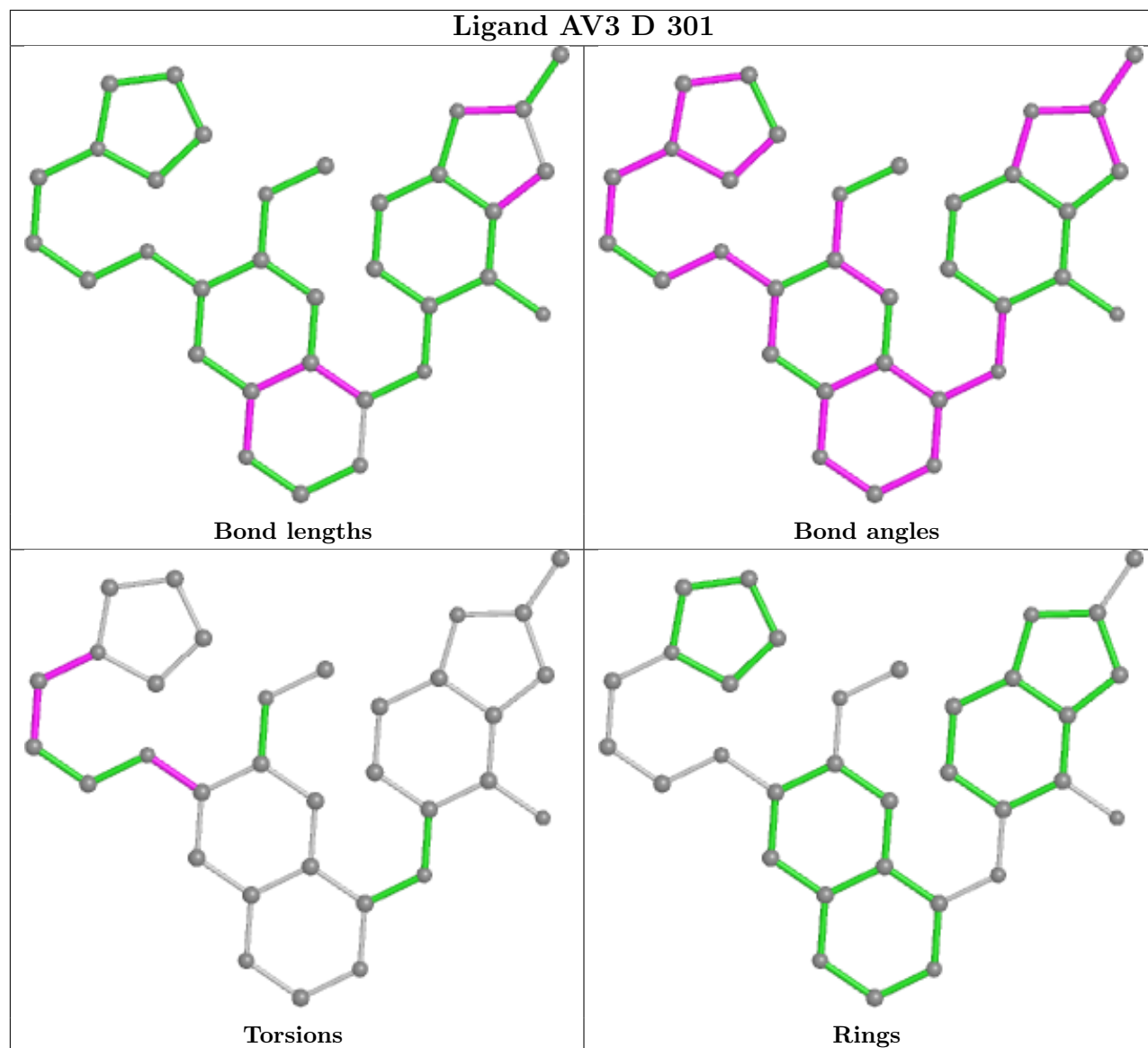












5.7 Other polymers [\(i\)](#)

There are no such residues in this entry.

5.8 Polymer linkage issues [\(i\)](#)

There are no chain breaks in this entry.

6 Fit of model and data [i](#)

6.1 Protein, DNA and RNA chains [i](#)

In the following table, the column labelled ‘#RSRZ > 2’ contains the number (and percentage) of RSRZ outliers, followed by percent RSRZ outliers for the chain as percentile scores relative to all X-ray entries and entries of similar resolution. The OWAB column contains the minimum, median, 95th percentile and maximum values of the occupancy-weighted average B-factor per residue. The column labelled ‘Q < 0.9’ lists the number of (and percentage) of residues with an average occupancy less than 0.9.

Mol	Chain	Analysed	<RSRZ>	#RSRZ>2	OWAB(Å ²)	Q<0.9
1	A	194/202 (96%)	-0.12	5 (2%) 56 57	26, 35, 52, 88	0
1	C	196/202 (97%)	-0.11	3 (1%) 73 76	25, 34, 53, 104	0
1	E	193/202 (95%)	-0.20	1 (0%) 91 92	25, 35, 51, 68	0
1	F	196/202 (97%)	-0.19	4 (2%) 65 67	25, 35, 53, 91	0
1	H	196/202 (97%)	-0.21	0 100 100	24, 35, 55, 85	0
1	J	195/202 (96%)	-0.28	3 (1%) 73 76	27, 37, 56, 79	0
1	L	193/202 (95%)	-0.25	2 (1%) 82 83	27, 37, 52, 67	0
2	B	177/194 (91%)	-0.15	3 (1%) 70 72	29, 39, 60, 77	0
2	D	175/194 (90%)	-0.28	2 (1%) 80 82	27, 36, 53, 69	0
2	G	176/194 (90%)	-0.24	0 100 100	26, 35, 58, 67	0
2	I	175/194 (90%)	-0.11	3 (1%) 70 72	25, 36, 57, 64	0
2	K	175/194 (90%)	-0.13	1 (0%) 89 91	29, 39, 61, 72	0
2	M	176/194 (90%)	-0.28	3 (1%) 70 72	27, 37, 56, 72	0
2	N	176/194 (90%)	-0.34	2 (1%) 80 82	27, 37, 58, 70	0
All	All	2593/2772 (93%)	-0.20	32 (1%) 79 80	24, 36, 56, 104	0

All (32) RSRZ outliers are listed below:

Mol	Chain	Res	Type	RSRZ
1	C	209	LEU	5.5
1	A	112	ALA	4.8
1	F	209	LEU	4.5
1	J	14	TYR	4.4
1	C	210	SER	4.2
2	I	57	SER	4.2
1	A	141	GLY	3.5
1	A	140	SER	3.2

Continued on next page...

Continued from previous page...

Mol	Chain	Res	Type	RSRZ
1	L	140	SER	3.2
1	J	69	ASP	2.9
2	B	57	SER	2.9
2	K	57	SER	2.8
1	A	69	ASP	2.7
1	F	113	ALA	2.7
2	I	55	ASP	2.7
1	A	113	ALA	2.6
1	F	112	ALA	2.5
1	C	140	SER	2.5
2	M	191	THR	2.4
2	N	191	THR	2.4
2	B	162	ILE	2.4
2	D	86	CYS	2.3
2	I	18	ASP	2.2
2	M	58	LYS	2.2
2	D	57	SER	2.2
1	L	69	ASP	2.2
1	J	140	SER	2.1
1	E	142	VAL	2.1
2	M	57	SER	2.1
1	F	69	ASP	2.1
2	B	155	ALA	2.1
2	N	54	GLU	2.1

6.2 Non-standard residues in protein, DNA, RNA chains [i](#)

There are no non-standard protein/DNA/RNA residues in this entry.

6.3 Carbohydrates [i](#)

There are no monosaccharides in this entry.

6.4 Ligands [i](#)

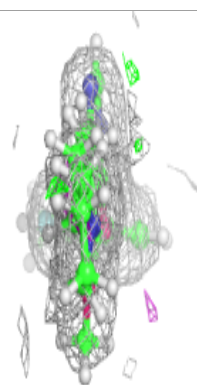
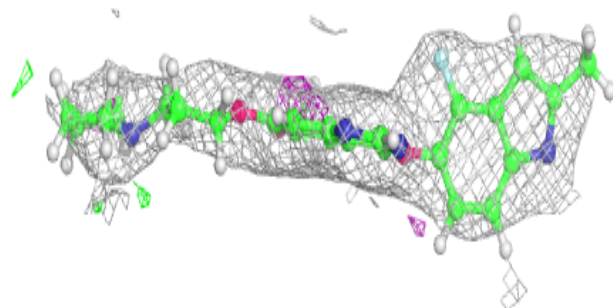
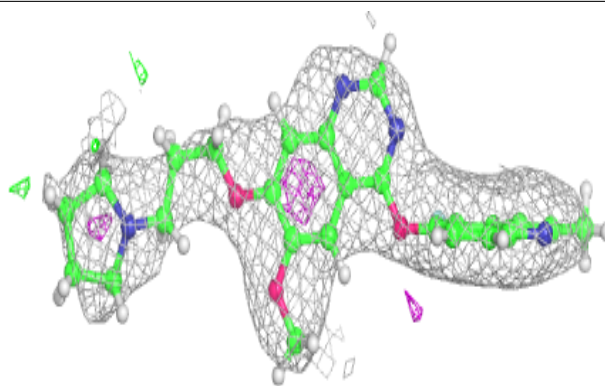
In the following table, the Atoms column lists the number of modelled atoms in the group and the number defined in the chemical component dictionary. The B-factors column lists the minimum, median, 95th percentile and maximum values of B factors of atoms in the group. The column labelled 'Q< 0.9' lists the number of atoms with occupancy less than 0.9.

Mol	Type	Chain	Res	Atoms	RSCC	RSR	B-factors(\AA^2)	Q<0.9
4	LEU	L	302	9/9	0.79	0.39	54,59,66,72	0
4	LEU	C	302	9/9	0.82	0.41	61,64,74,77	0
4	LEU	A	302	9/9	0.84	0.41	58,63,71,76	0
4	LEU	E	302	9/9	0.85	0.57	52,59,67,69	0
4	LEU	J	302	9/9	0.86	0.33	43,50,63,67	0
5	AV3	K	301	33/33	0.86	0.22	37,50,85,89	0
4	LEU	H	302	9/9	0.87	0.35	48,52,61,61	0
4	LEU	F	302	9/9	0.88	0.37	53,55,67,70	0
4	LEU	G	303	9/9	0.90	0.23	33,40,46,49	0
5	AV3	I	301	33/33	0.91	0.19	34,50,84,96	0
4	LEU	N	303	9/9	0.91	0.20	29,39,52,53	0
5	AV3	G	301	33/33	0.91	0.18	35,50,83,83	0
4	LEU	I	303	9/9	0.92	0.22	34,38,49,50	0
4	LEU	B	304	9/9	0.92	0.16	32,38,46,49	0
5	AV3	N	301	33/33	0.92	0.17	35,50,86,87	0
5	AV3	B	302	33/33	0.92	0.16	34,50,85,85	0
3	S0R	C	301	16/17	0.93	0.18	37,47,58,60	0
5	AV3	D	301	33/33	0.93	0.16	34,50,92,93	0
3	S0R	H	301	16/17	0.93	0.15	35,41,47,52	0
3	S0R	A	301	16/17	0.93	0.23	43,50,60,61	0
4	LEU	K	303	9/9	0.93	0.18	33,39,46,47	0
5	AV3	B	301	33/33	0.93	0.17	36,50,87,87	0
4	LEU	D	303	9/9	0.94	0.20	29,40,51,56	0
4	LEU	M	302	9/9	0.94	0.16	31,35,45,48	0
3	S0R	L	301	16/17	0.94	0.21	48,53,58,59	0
3	S0R	J	301	16/17	0.95	0.14	30,44,50,51	0
3	S0R	E	301	16/17	0.96	0.18	35,48,54,59	0
3	S0R	F	301	16/17	0.96	0.18	34,40,46,48	0
3	S0R	B	303	16/17	0.97	0.16	27,33,39,42	0
3	S0R	K	302	16/17	0.97	0.16	29,37,41,42	0
3	S0R	D	302	16/17	0.97	0.15	27,32,35,38	0
3	S0R	M	301	16/17	0.97	0.16	26,30,34,34	0
3	S0R	N	302	16/17	0.97	0.19	27,35,39,39	0
3	S0R	I	302	16/17	0.97	0.13	29,32,37,38	0
3	S0R	G	302	16/17	0.97	0.17	29,34,38,42	0

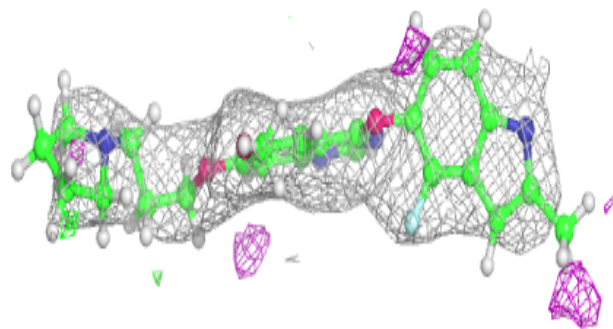
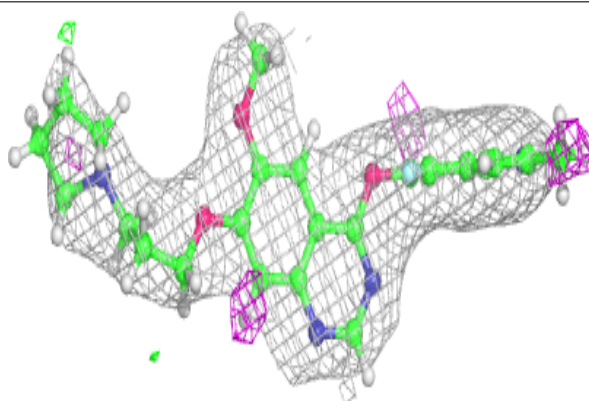
The following is a graphical depiction of the model fit to experimental electron density of all instances of the Ligand of Interest. In addition, ligands with molecular weight > 250 and outliers as shown on the geometry validation Tables will also be included. Each fit is shown from different orientation to approximate a three-dimensional view.

Electron density around AV3 K 301:

$2mF_o-DF_c$ (at 0.7 rmsd) in gray
 mF_o-DF_c (at 3 rmsd) in purple (negative)
and green (positive)

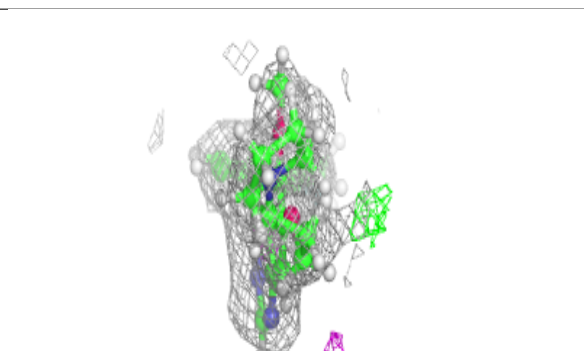
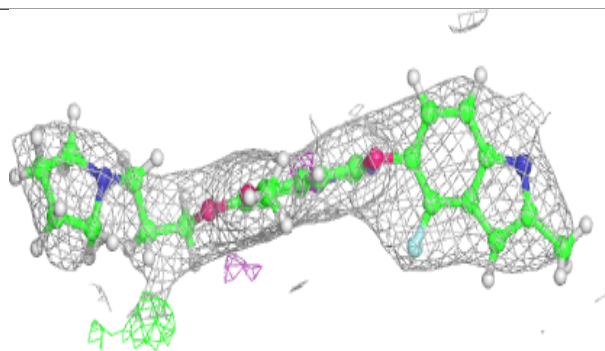
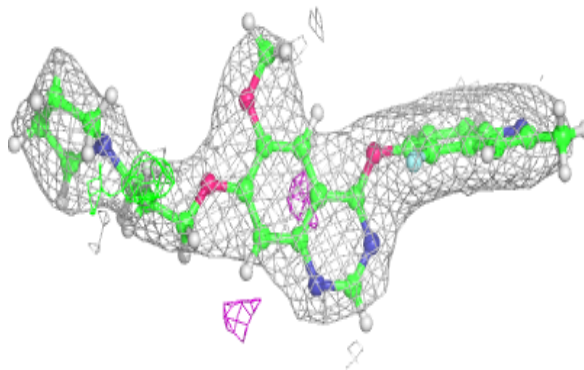
**Electron density around AV3 I 301:**

$2mF_o-DF_c$ (at 0.7 rmsd) in gray
 mF_o-DF_c (at 3 rmsd) in purple (negative)
and green (positive)

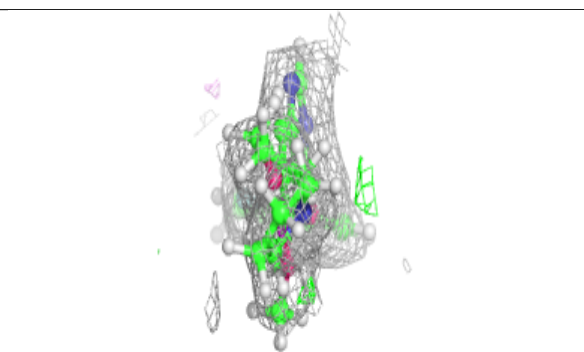
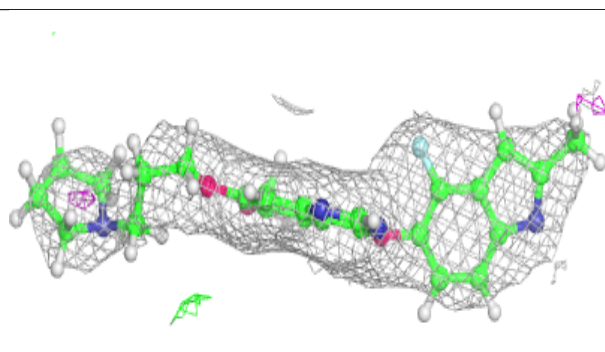
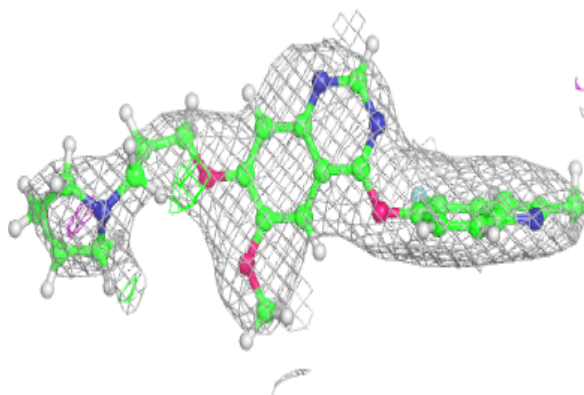


Electron density around AV3 G 301:

$2mF_o-DF_c$ (at 0.7 rmsd) in gray
 mF_o-DF_c (at 3 rmsd) in purple (negative)
and green (positive)

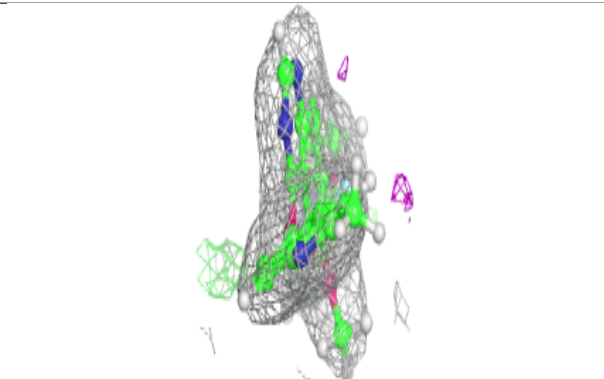
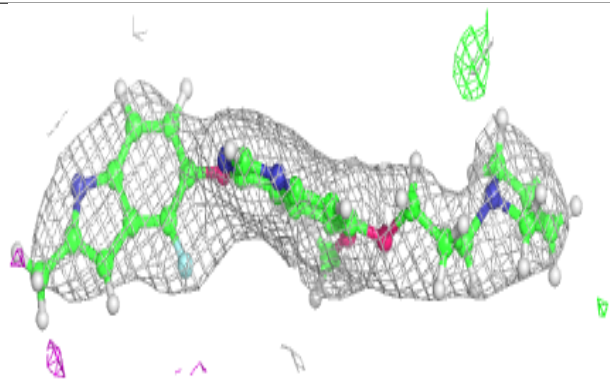
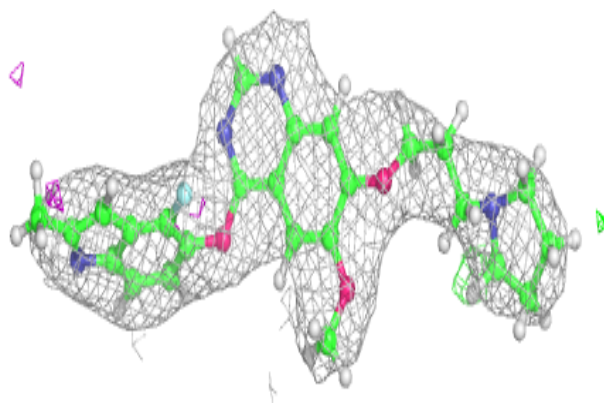
**Electron density around AV3 N 301:**

$2mF_o-DF_c$ (at 0.7 rmsd) in gray
 mF_o-DF_c (at 3 rmsd) in purple (negative)
and green (positive)

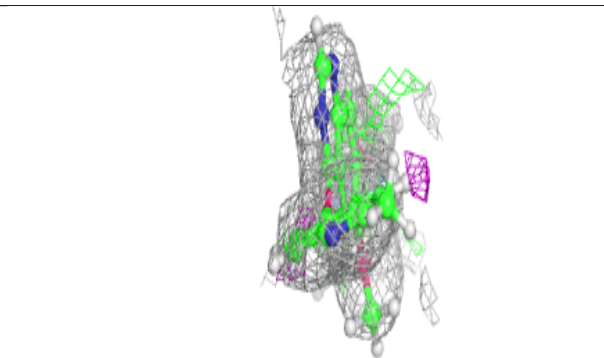
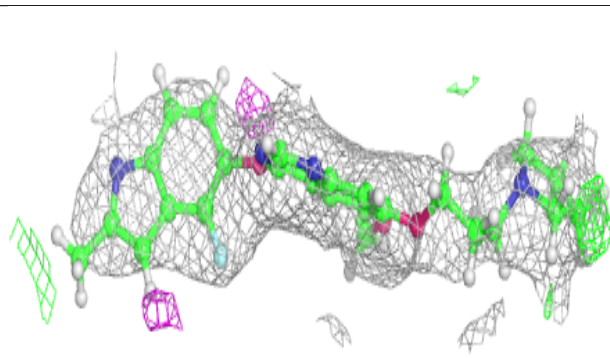
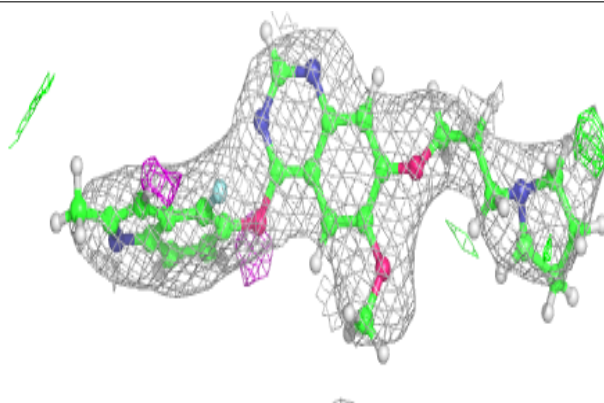


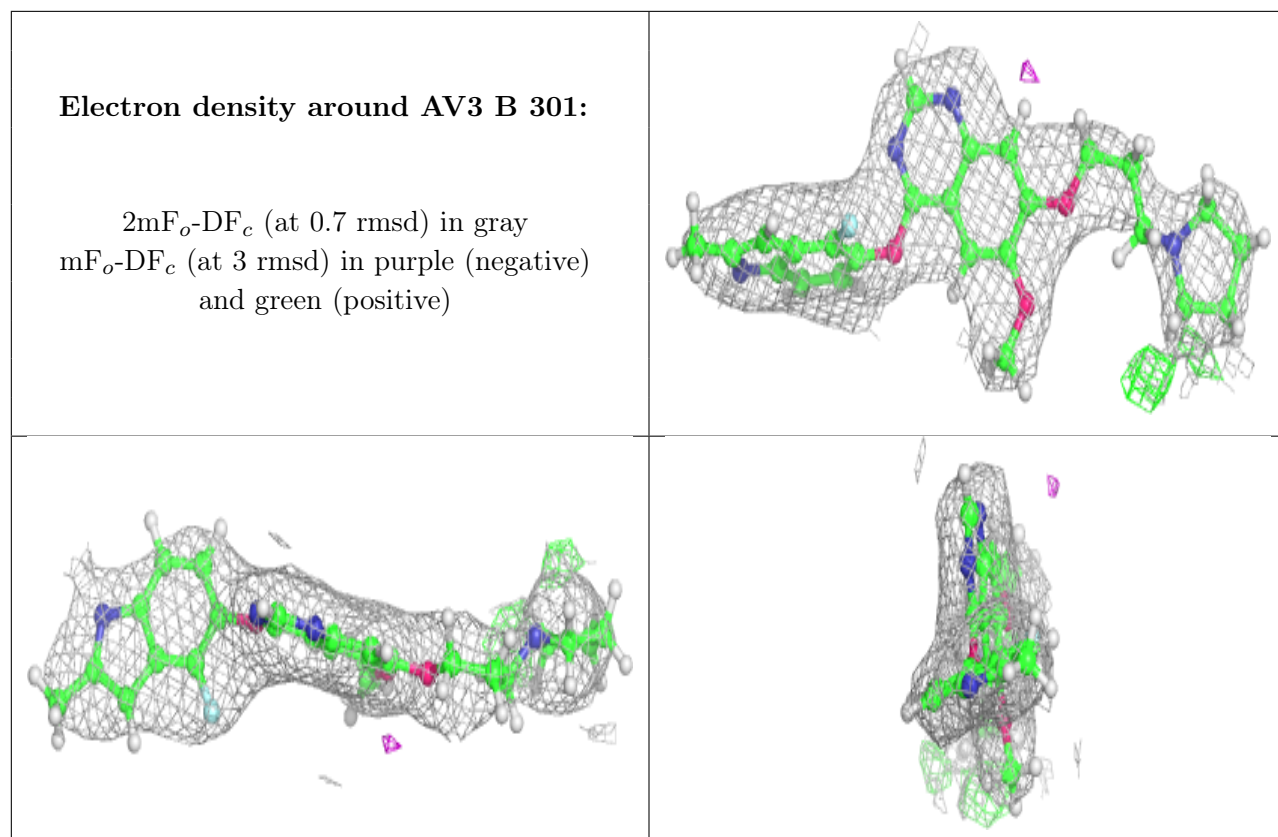
Electron density around AV3 B 302:

$2mF_o-DF_c$ (at 0.7 rmsd) in gray
 mF_o-DF_c (at 3 rmsd) in purple (negative)
and green (positive)

**Electron density around AV3 D 301:**

$2mF_o-DF_c$ (at 0.7 rmsd) in gray
 mF_o-DF_c (at 3 rmsd) in purple (negative)
and green (positive)





6.5 Other polymers [i](#)

There are no such residues in this entry.