



# Full wwPDB X-ray Structure Validation Report ⓘ

Aug 22, 2020 – 01:45 AM BST

PDB ID : 6IY9  
Title : Crystal structure of aminoglycoside 7"-phosphotransferase-Ia (APH(7")-Ia/HYG) from *Streptomyces hygrosopicus* complexed with hygromycin B  
Authors : Takenoya, M.; Shimamura, T.; Yamanaka, R.; Adachi, Y.; Ito, S.; Sasaki, Y.; Nakamura, A.; Yajima, S.  
Deposited on : 2018-12-14  
Resolution : 2.40 Å(reported)

This is a Full wwPDB X-ray Structure Validation Report for a publicly released PDB entry.

We welcome your comments at [validation@mail.wwpdb.org](mailto:validation@mail.wwpdb.org)

A user guide is available at

<https://www.wwpdb.org/validation/2017/XrayValidationReportHelp>

with specific help available everywhere you see the ⓘ symbol.

---

The following versions of software and data (see [references ⓘ](#)) were used in the production of this report:

MolProbity : 4.02b-467  
Mogul : 1.8.5 (274361), CSD as541be (2020)  
Xtriage (Phenix) : 1.13  
EDS : 2.13.1  
buster-report : 1.1.7 (2018)  
Percentile statistics : 20191225.v01 (using entries in the PDB archive December 25th 2019)  
Refmac : 5.8.0158  
CCP4 : 7.0.044 (Gargrove)  
Ideal geometry (proteins) : Engh & Huber (2001)  
Ideal geometry (DNA, RNA) : Parkinson et al. (1996)  
Validation Pipeline (wwPDB-VP) : 2.13.1

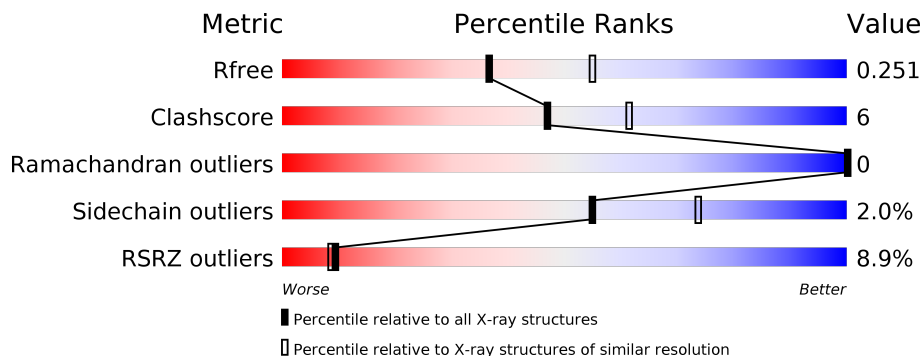
# 1 Overall quality at a glance

The following experimental techniques were used to determine the structure:

*X-RAY DIFFRACTION*

The reported resolution of this entry is 2.40 Å.

Percentile scores (ranging between 0-100) for global validation metrics of the entry are shown in the following graphic. The table shows the number of entries on which the scores are based.



Metric	Whole archive (#Entries)	Similar resolution (#Entries, resolution range(Å))
$R_{free}$	130704	3907 (2.40-2.40)
Clashscore	141614	4398 (2.40-2.40)
Ramachandran outliers	138981	4318 (2.40-2.40)
Sidechain outliers	138945	4319 (2.40-2.40)
RSRZ outliers	127900	3811 (2.40-2.40)

The table below summarises the geometric issues observed across the polymeric chains and their fit to the electron density. The red, orange, yellow and green segments on the lower bar indicate the fraction of residues that contain outliers for  $\geq 3$ , 2, 1 and 0 types of geometric quality criteria respectively. A grey segment represents the fraction of residues that are not modelled. The numeric value for each fraction is indicated below the corresponding segment, with a dot representing fractions  $\leq 5\%$ . The upper red bar (where present) indicates the fraction of residues that have poor fit to the electron density. The numeric value is given above the bar.

Mol	Chain	Length	Quality of chain
1	A	340	 8% 79% 16% 5%
1	B	340	 9% 79% 16% 5%

The following table lists non-polymeric compounds, carbohydrate monomers and non-standard residues in protein, DNA, RNA chains that are outliers for geometric or electron-density-fit criteria:

Mol	Type	Chain	Res	Chirality	Geometry	Clashes	Electron density
3	NHE	A	402	-	-	-	X

## 2 Entry composition [i](#)

There are 5 unique types of molecules in this entry. The entry contains 5282 atoms, of which 0 are hydrogens and 0 are deuteriums.

In the tables below, the ZeroOcc column contains the number of atoms modelled with zero occupancy, the AltConf column contains the number of residues with at least one atom in alternate conformation and the Trace column contains the number of residues modelled with at most 2 atoms.

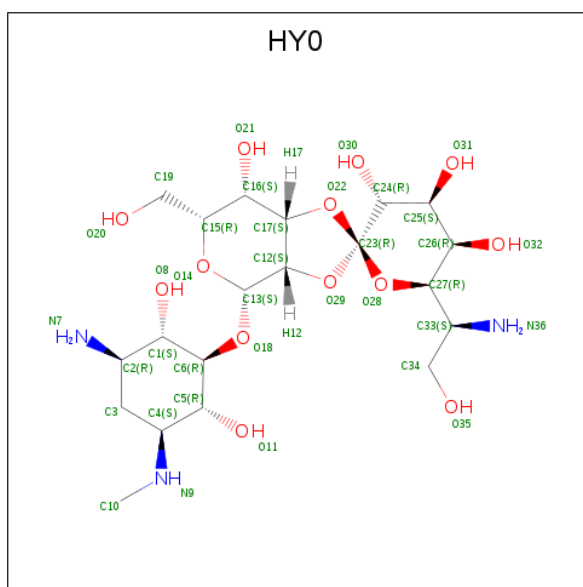
- Molecule 1 is a protein called Hygromycin-B 7<sup>o</sup>-O-kinase.

Mol	Chain	Residues	Atoms						ZeroOcc	AltConf	Trace
			Total	C	N	O	S	Se			
1	A	325	2573	1639	447	483	1	3	0	0	0
1	B	324	2564	1634	445	481	1	3	0	0	0

There are 18 discrepancies between the modelled and reference sequences:

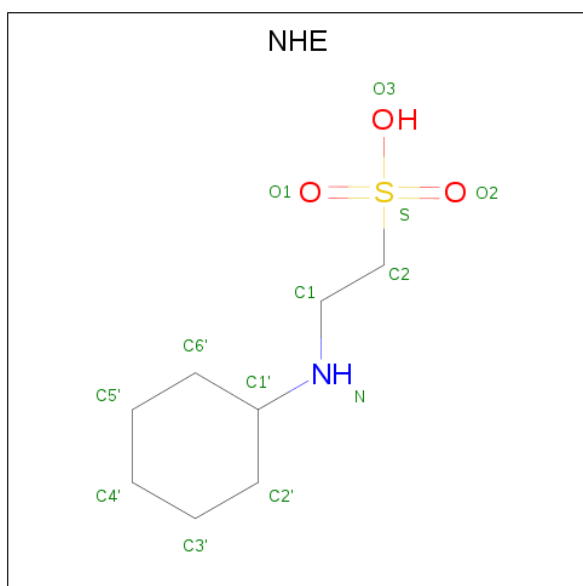
Chain	Residue	Modelled	Actual	Comment	Reference
A	63	GLY	ASP	engineered mutation	UNP P09979
A	333	LEU	-	expression tag	UNP P09979
A	334	GLU	-	expression tag	UNP P09979
A	335	HIS	-	expression tag	UNP P09979
A	336	HIS	-	expression tag	UNP P09979
A	337	HIS	-	expression tag	UNP P09979
A	338	HIS	-	expression tag	UNP P09979
A	339	HIS	-	expression tag	UNP P09979
A	340	HIS	-	expression tag	UNP P09979
B	63	GLY	ASP	engineered mutation	UNP P09979
B	333	LEU	-	expression tag	UNP P09979
B	334	GLU	-	expression tag	UNP P09979
B	335	HIS	-	expression tag	UNP P09979
B	336	HIS	-	expression tag	UNP P09979
B	337	HIS	-	expression tag	UNP P09979
B	338	HIS	-	expression tag	UNP P09979
B	339	HIS	-	expression tag	UNP P09979
B	340	HIS	-	expression tag	UNP P09979

- Molecule 2 is HYGROMYCIN B VARIANT (three-letter code: HY0) (formula: C<sub>20</sub>H<sub>37</sub>N<sub>3</sub>O<sub>13</sub>).



Mol	Chain	Residues	Atoms				ZeroOcc	AltConf
			Total	C	N	O		
2	A	1	36	20	3	13	0	0
2	B	1	36	20	3	13	0	0

- Molecule 3 is 2-[N-CYCLOHEXYLAMINO]ETHANE SULFONIC ACID (three-letter code: NHE) (formula:  $C_8H_{17}NO_3S$ ).



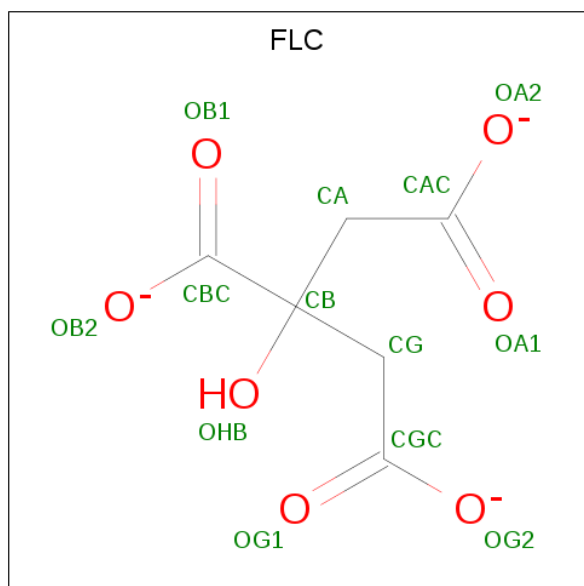
Mol	Chain	Residues	Atoms					ZeroOcc	AltConf
			Total	C	N	O	S		
3	A	1	13	8	1	3	1	0	0

*Continued on next page...*

Continued from previous page...

Mol	Chain	Residues	Atoms					ZeroOcc	AltConf
			Total	C	N	O	S		
3	B	1	13	8	1	3	1	0	0

- Molecule 4 is CITRATE ANION (three-letter code: FLC) (formula:  $C_6H_5O_7$ ).



Mol	Chain	Residues	Atoms			ZeroOcc	AltConf
			Total	C	O		
4	A	1	13	6	7	0	0
4	B	1	13	6	7	0	0

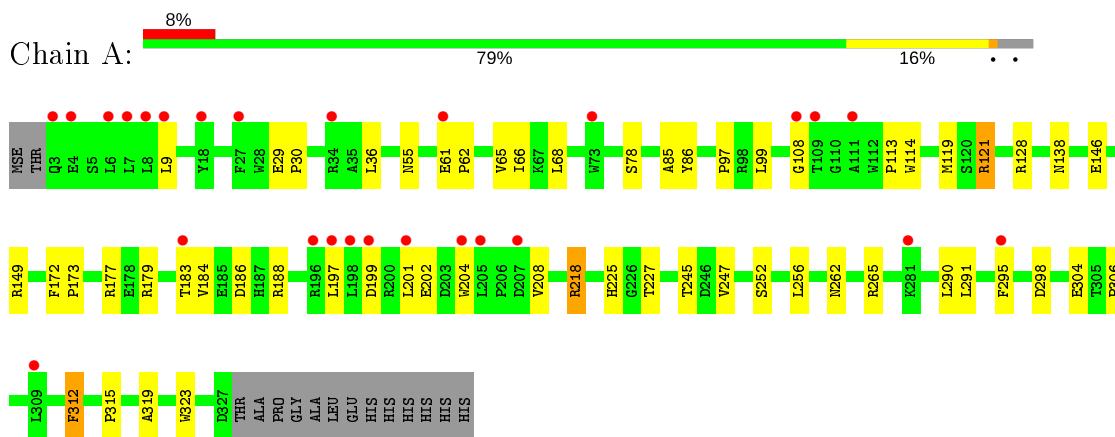
- Molecule 5 is water.

Mol	Chain	Residues	Atoms		ZeroOcc	AltConf
			Total	O		
5	A	9	9	9	0	0
5	B	12	12	12	0	0

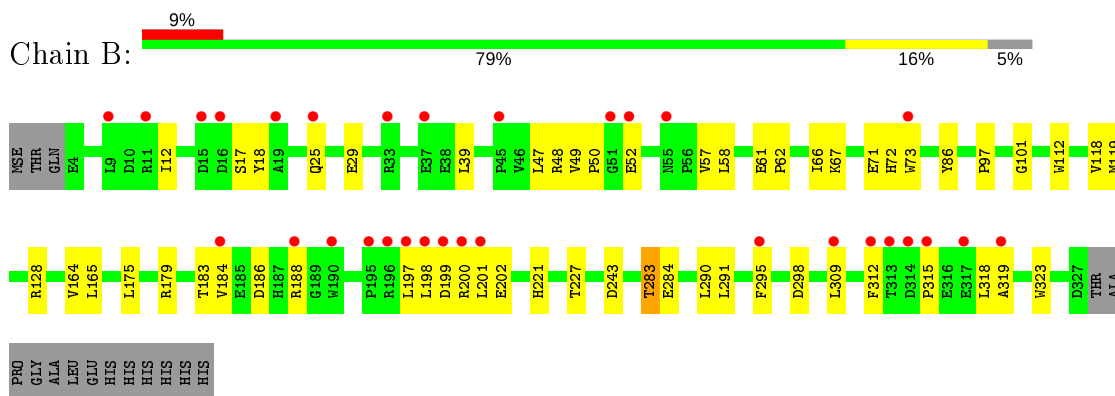
### 3 Residue-property plots [i](#)

These plots are drawn for all protein, RNA, DNA and oligosaccharide chains in the entry. The first graphic for a chain summarises the proportions of the various outlier classes displayed in the second graphic. The second graphic shows the sequence view annotated by issues in geometry and electron density. Residues are color-coded according to the number of geometric quality criteria for which they contain at least one outlier: green = 0, yellow = 1, orange = 2 and red = 3 or more. A red dot above a residue indicates a poor fit to the electron density ( $RSRZ > 2$ ). Stretches of 2 or more consecutive residues without any outlier are shown as a green connector. Residues present in the sample, but not in the model, are shown in grey.

- Molecule 1: Hygromycin-B 7'-O-kinase



- Molecule 1: Hygromycin-B 7'-O-kinase



## 4 Data and refinement statistics

Property	Value	Source
Space group	P 2 3	Depositor
Cell constants a, b, c, $\alpha$ , $\beta$ , $\gamma$	151.59Å 151.59Å 151.59Å 90.00° 90.00° 90.00°	Depositor
Resolution (Å)	47.90 – 2.40 47.94 – 2.40	Depositor EDS
% Data completeness (in resolution range)	100.0 (47.90-2.40) 100.0 (47.94-2.40)	Depositor EDS
$R_{merge}$	0.13	Depositor
$R_{sym}$	(Not available)	Depositor
$\langle I/\sigma(I) \rangle$ <sup>1</sup>	1.80 (at 2.39Å)	Xtrriage
Refinement program	PHENIX 1.15.2	Depositor
R, $R_{free}$	0.225 , 0.251 0.225 , 0.251	Depositor DCC
$R_{free}$ test set	2331 reflections (5.11%)	wwPDB-VP
Wilson B-factor (Å <sup>2</sup> )	68.5	Xtrriage
Anisotropy	0.000	Xtrriage
Bulk solvent $k_{sol}$ (e/Å <sup>3</sup> ), $B_{sol}$ (Å <sup>2</sup> )	0.34 , 72.4	EDS
L-test for twinning <sup>2</sup>	$\langle  L  \rangle = 0.50$ , $\langle L^2 \rangle = 0.33$	Xtrriage
Estimated twinning fraction	0.024 for l,-k,h	Xtrriage
$F_o, F_c$ correlation	0.95	EDS
Total number of atoms	5282	wwPDB-VP
Average B, all atoms (Å <sup>2</sup> )	103.0	wwPDB-VP

Xtrriage's analysis on translational NCS is as follows: *The largest off-origin peak in the Patterson function is 2.19% of the height of the origin peak. No significant pseudotranslation is detected.*

<sup>1</sup>Intensities estimated from amplitudes.

<sup>2</sup>Theoretical values of  $\langle |L| \rangle$ ,  $\langle L^2 \rangle$  for acentric reflections are 0.5, 0.333 respectively for untwinned datasets, and 0.375, 0.2 for perfectly twinned datasets.



## 5 Model quality [i](#)

### 5.1 Standard geometry [i](#)

Bond lengths and bond angles in the following residue types are not validated in this section: NHE, HY0, FLC

The Z score for a bond length (or angle) is the number of standard deviations the observed value is removed from the expected value. A bond length (or angle) with  $|Z| > 5$  is considered an outlier worth inspection. RMSZ is the root-mean-square of all Z scores of the bond lengths (or angles).

Mol	Chain	Bond lengths		Bond angles	
		RMSZ	# Z  >5	RMSZ	# Z  >5
1	A	0.26	0/2640	0.47	0/3603
1	B	0.27	0/2631	0.49	0/3591
All	All	0.27	0/5271	0.48	0/7194

There are no bond length outliers.

There are no bond angle outliers.

There are no chirality outliers.

There are no planarity outliers.

### 5.2 Too-close contacts [i](#)

In the following table, the Non-H and H(model) columns list the number of non-hydrogen atoms and hydrogen atoms in the chain respectively. The H(added) column lists the number of hydrogen atoms added and optimized by MolProbity. The Clashes column lists the number of clashes within the asymmetric unit, whereas Symm-Clashes lists symmetry related clashes.

Mol	Chain	Non-H	H(model)	H(added)	Clashes	Symm-Clashes
1	A	2573	0	2501	31	0
1	B	2564	0	2493	33	0
2	A	36	0	37	0	0
2	B	36	0	37	0	0
3	A	13	0	17	0	0
3	B	13	0	17	0	0
4	A	13	0	5	0	0
4	B	13	0	5	0	0
5	A	9	0	0	0	0
5	B	12	0	0	0	0
All	All	5282	0	5112	64	0

The all-atom clashscore is defined as the number of clashes found per 1000 atoms (including hydrogen atoms). The all-atom clashscore for this structure is 6.

All (64) close contacts within the same asymmetric unit are listed below, sorted by their clash magnitude.

Atom-1	Atom-2	Interatomic distance (Å)	Clash overlap (Å)
1:B:164:VAL:HG23	1:B:165:LEU:HG	1.69	0.75
1:A:225:HIS:HD2	1:A:227:THR:H	1.42	0.68
1:B:49:VAL:HG22	1:B:58:LEU:HB3	1.76	0.67
1:A:197:LEU:HG	1:A:315:PRO:HG3	1.77	0.67
1:A:291:LEU:HD22	1:A:319:ALA:HB2	1.80	0.63
1:B:183:THR:HG21	1:B:295:PHE:HB3	1.81	0.63
1:B:184:VAL:HG21	1:B:202:GLU:HG2	1.83	0.61
1:A:188:ARG:NH1	1:A:199:ASP:OD1	2.32	0.61
1:B:57:VAL:HG12	1:B:67:LYS:HG3	1.85	0.58
1:B:52:GLU:OE2	1:B:227:THR:OG1	2.21	0.58
1:B:291:LEU:HD22	1:B:319:ALA:HB2	1.84	0.57
1:A:184:VAL:HG21	1:A:202:GLU:HG2	1.87	0.56
1:A:78:SER:HB3	1:A:245:THR:HB	1.88	0.55
1:B:309:LEU:HD13	1:B:318:LEU:HD11	1.89	0.55
1:B:71:GLU:HB2	1:B:112:TRP:CD2	2.42	0.55
1:B:86:TYR:OH	1:B:97:PRO:HG2	2.06	0.55
1:A:183:THR:HG21	1:A:295:PHE:HB3	1.89	0.55
1:A:86:TYR:OH	1:A:97:PRO:HG2	2.08	0.54
1:B:179:ARG:NH2	1:B:186:ASP:OD2	2.34	0.53
1:A:179:ARG:NH2	1:A:186:ASP:OD2	2.33	0.53
1:A:61:GLU:HB3	1:A:62:PRO:HD3	1.91	0.53
1:A:265:ARG:HD2	1:A:306:PRO:HD3	1.89	0.53
1:B:188:ARG:NH1	1:B:199:ASP:OD1	2.41	0.52
1:A:179:ARG:HD3	1:A:298:ASP:HA	1.91	0.52
1:B:179:ARG:HD2	1:B:298:ASP:HA	1.92	0.52
1:A:108:GLY:HA3	1:A:113:PRO:HG3	1.92	0.52
1:A:36:LEU:HD11	1:A:66:ILE:HD11	1.92	0.52
1:B:175:LEU:HD21	1:B:298:ASP:HB2	1.94	0.49
1:A:262:ASN:ND2	1:A:304:GLU:HG3	2.27	0.49
1:B:72:HIS:HB2	1:B:73:TRP:CE3	2.47	0.49
1:B:12:ILE:HG23	1:B:17:SER:HB2	1.96	0.48
1:A:65:VAL:HG23	1:A:121:ARG:HG2	1.95	0.48
1:A:184:VAL:HG22	1:A:201:LEU:HD23	1.96	0.48
1:B:188:ARG:HG2	1:B:198:LEU:HD13	1.95	0.48
1:B:58:LEU:HD11	1:B:66:ILE:HB	1.96	0.47
1:A:146:GLU:OE1	1:A:149:ARG:NH1	2.47	0.47
1:B:48:ARG:O	1:B:50:PRO:HD3	2.15	0.47

*Continued on next page...*

Continued from previous page...

Atom-1	Atom-2	Interatomic distance (Å)	Clash overlap (Å)
1:A:55:ASN:HB3	1:A:68:LEU:O	2.15	0.46
1:B:179:ARG:CD	1:B:298:ASP:HA	2.45	0.46
1:A:290:LEU:HD23	1:A:290:LEU:HA	1.74	0.46
1:B:200:ARG:HD2	1:B:315:PRO:HD2	1.98	0.45
1:A:204:TRP:CH2	1:A:291:LEU:HD23	2.52	0.45
1:A:256:LEU:HD12	1:A:290:LEU:HD11	1.99	0.45
1:B:39:LEU:HD13	1:B:101:GLY:HA3	1.98	0.44
1:B:47:LEU:HD21	1:B:58:LEU:HD13	2.00	0.44
1:B:179:ARG:O	1:B:183:THR:OG1	2.34	0.44
1:A:290:LEU:HD13	1:A:323:TRP:CE3	2.53	0.43
1:A:218:ARG:HG3	1:A:252:SER:HB3	1.99	0.43
1:B:184:VAL:HG22	1:B:201:LEU:HD23	2.01	0.43
1:B:221:HIS:NE2	1:B:243:ASP:O	2.52	0.43
1:B:290:LEU:HD13	1:B:323:TRP:CE3	2.53	0.43
1:A:197:LEU:HB2	1:A:312:PHE:O	2.18	0.42
1:A:177:ARG:HA	1:A:208:VAL:HG21	2.01	0.42
1:A:29:GLU:HB3	1:A:30:PRO:HD3	2.02	0.42
1:B:66:ILE:HG12	1:B:118:VAL:HG22	2.01	0.42
1:A:172:PHE:HB3	1:A:173:PRO:HD3	2.02	0.42
1:B:290:LEU:HA	1:B:290:LEU:HD23	1.77	0.42
1:A:9:LEU:HD22	1:A:114:TRP:NE1	2.35	0.42
1:B:283:THR:HG22	1:B:284:GLU:H	1.84	0.42
1:B:197:LEU:HG	1:B:315:PRO:HD3	2.02	0.42
1:B:25:GLN:O	1:B:29:GLU:HB2	2.20	0.41
1:A:99:LEU:HA	1:A:99:LEU:HD23	1.89	0.41
1:A:85:ALA:HB2	1:A:247:VAL:HG21	2.03	0.40
1:B:61:GLU:HB2	1:B:62:PRO:HD3	2.03	0.40

There are no symmetry-related clashes.

## 5.3 Torsion angles [i](#)

### 5.3.1 Protein backbone [i](#)

In the following table, the Percentiles column shows the percent Ramachandran outliers of the chain as a percentile score with respect to all X-ray entries followed by that with respect to entries of similar resolution.

The Analysed column shows the number of residues for which the backbone conformation was analysed, and the total number of residues.

Mol	Chain	Analysed	Favoured	Allowed	Outliers	Percentiles	
1	A	323/340 (95%)	310 (96%)	13 (4%)	0	100	100
1	B	322/340 (95%)	305 (95%)	17 (5%)	0	100	100
All	All	645/680 (95%)	615 (95%)	30 (5%)	0	100	100

There are no Ramachandran outliers to report.

### 5.3.2 Protein sidechains [i](#)

In the following table, the Percentiles column shows the percent sidechain outliers of the chain as a percentile score with respect to all X-ray entries followed by that with respect to entries of similar resolution.

The Analysed column shows the number of residues for which the sidechain conformation was analysed, and the total number of residues.

Mol	Chain	Analysed	Rotameric	Outliers	Percentiles	
1	A	273/281 (97%)	267 (98%)	6 (2%)	52	71
1	B	272/281 (97%)	267 (98%)	5 (2%)	59	76
All	All	545/562 (97%)	534 (98%)	11 (2%)	55	74

All (11) residues with a non-rotameric sidechain are listed below:

Mol	Chain	Res	Type
1	A	119	MSE
1	A	121	ARG
1	A	128	ARG
1	A	138	ASN
1	A	218	ARG
1	A	312	PHE
1	B	18	TYR
1	B	119	MSE
1	B	128	ARG
1	B	283	THR
1	B	312	PHE

Some sidechains can be flipped to improve hydrogen bonding and reduce clashes. All (1) such sidechains are listed below:

Mol	Chain	Res	Type
1	A	225	HIS

### 5.3.3 RNA [i](#)

There are no RNA molecules in this entry.

## 5.4 Non-standard residues in protein, DNA, RNA chains [i](#)

There are no non-standard protein/DNA/RNA residues in this entry.

## 5.5 Carbohydrates [i](#)

There are no monosaccharides in this entry.

## 5.6 Ligand geometry [i](#)

6 ligands are modelled in this entry.

In the following table, the Counts columns list the number of bonds (or angles) for which Mogul statistics could be retrieved, the number of bonds (or angles) that are observed in the model and the number of bonds (or angles) that are defined in the Chemical Component Dictionary. The Link column lists molecule types, if any, to which the group is linked. The Z score for a bond length (or angle) is the number of standard deviations the observed value is removed from the expected value. A bond length (or angle) with  $|Z| > 2$  is considered an outlier worth inspection. RMSZ is the root-mean-square of all Z scores of the bond lengths (or angles).

Mol	Type	Chain	Res	Link	Bond lengths			Bond angles		
					Counts	RMSZ	# Z  > 2	Counts	RMSZ	# Z  > 2
2	HY0	B	401	-	35,39,39	0.50	1 (2%)	43,60,60	0.77	1 (2%)
3	NHE	B	403	-	13,13,13	2.53	2 (15%)	16,17,17	1.49	3 (18%)
3	NHE	A	402	-	13,13,13	2.50	2 (15%)	16,17,17	1.45	3 (18%)
4	FLC	A	403	-	3,12,12	0.78	0	3,17,17	0.16	0
4	FLC	B	402	-	3,12,12	0.80	0	3,17,17	0.24	0
2	HY0	A	401	-	35,39,39	0.49	1 (2%)	43,60,60	0.72	1 (2%)

In the following table, the Chirals column lists the number of chiral outliers, the number of chiral centers analysed, the number of these observed in the model and the number defined in the Chemical Component Dictionary. Similar counts are reported in the Torsion and Rings columns. '-' means no outliers of that kind were identified.

Mol	Type	Chain	Res	Link	Chirals	Torsions	Rings
2	HY0	B	401	-	-	0/12/87/87	0/4/4/4
3	NHE	B	403	-	-	4/7/15/15	0/1/1/1
3	NHE	A	402	-	-	5/7/15/15	0/1/1/1

*Continued on next page...*

*Continued from previous page...*

Mol	Type	Chain	Res	Link	Chirals	Torsions	Rings
4	FLC	A	403	-	-	0/6/16/16	-
4	FLC	B	402	-	-	0/6/16/16	-
2	HY0	A	401	-	-	0/12/87/87	0/4/4/4

All (6) bond length outliers are listed below:

Mol	Chain	Res	Type	Atoms	Z	Observed(Å)	Ideal(Å)
3	B	403	NHE	C2-S	-7.70	1.66	1.77
3	A	402	NHE	C2-S	-7.54	1.66	1.77
3	A	402	NHE	O3-S	4.63	1.64	1.47
3	B	403	NHE	O3-S	4.60	1.63	1.47
2	A	401	HY0	O28-C23	2.07	1.43	1.40
2	B	401	HY0	O28-C23	2.04	1.43	1.40

All (8) bond angle outliers are listed below:

Mol	Chain	Res	Type	Atoms	Z	Observed(°)	Ideal(°)
3	B	403	NHE	C1-N-C1'	3.94	121.87	114.14
3	A	402	NHE	C1-N-C1'	3.67	121.34	114.14
3	B	403	NHE	O2-S-C2	2.60	110.04	106.92
3	A	402	NHE	O2-S-C2	2.48	109.90	106.92
3	A	402	NHE	O3-S-C2	2.43	109.70	105.77
2	B	401	HY0	O14-C13-C12	2.27	114.01	109.51
2	A	401	HY0	O14-C13-C12	2.21	113.89	109.51
3	B	403	NHE	O1-S-C2	2.20	109.57	106.92

There are no chirality outliers.

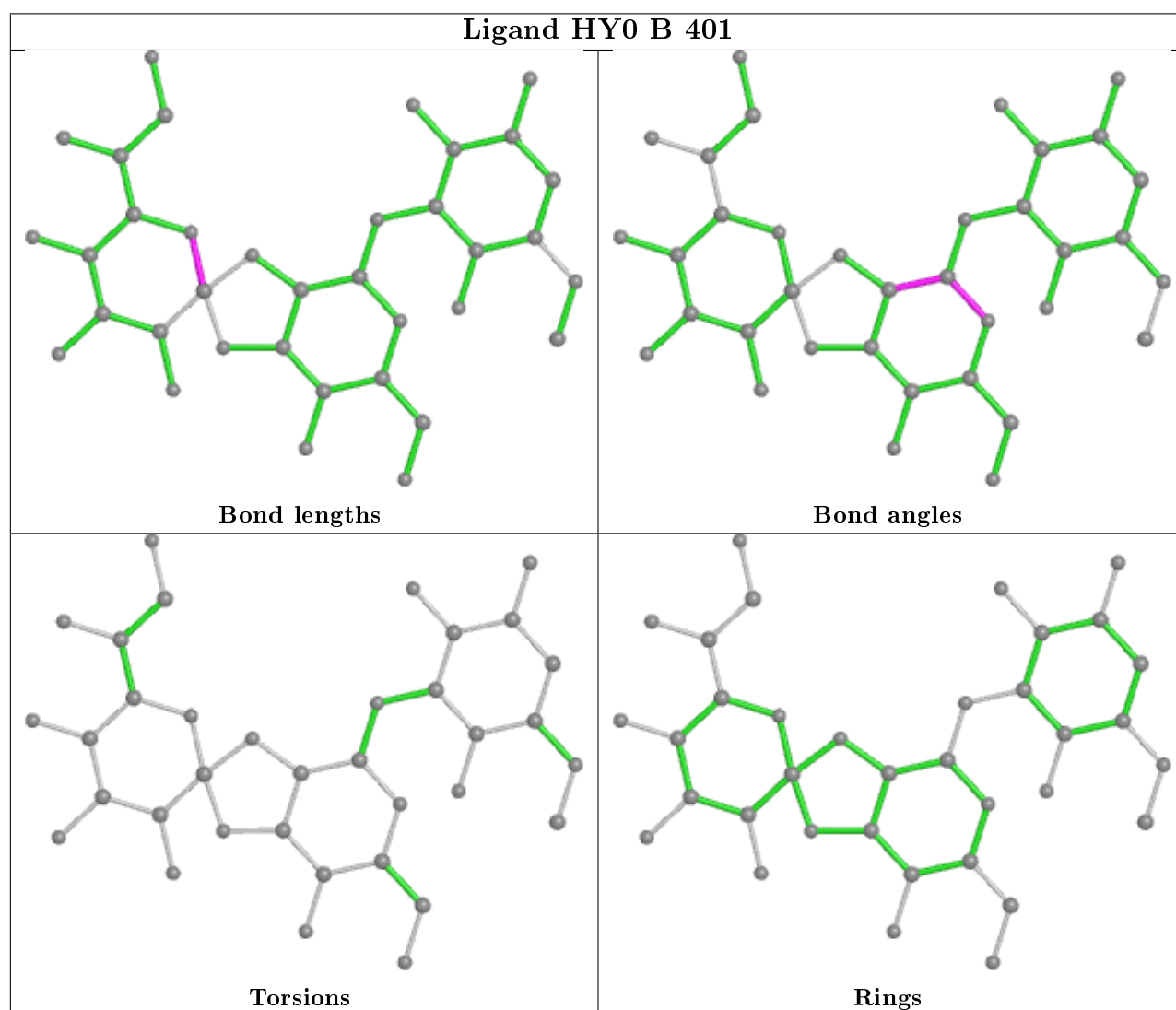
All (9) torsion outliers are listed below:

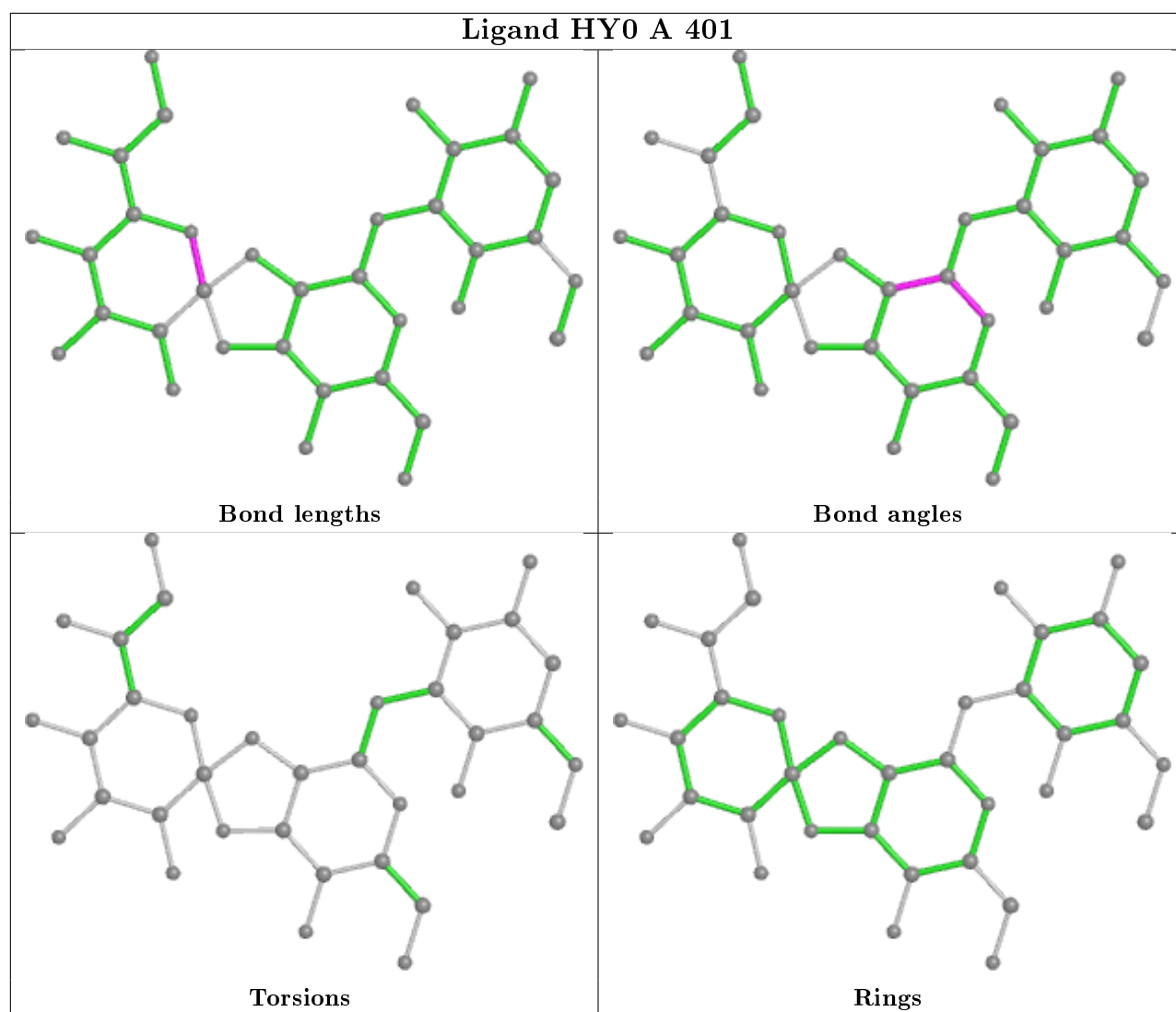
Mol	Chain	Res	Type	Atoms
3	B	403	NHE	C6'-C1'-N-C1
3	B	403	NHE	C1-C2-S-O2
3	A	402	NHE	C2-C1-N-C1'
3	A	402	NHE	N-C1-C2-S
3	A	402	NHE	C1-C2-S-O1
3	A	402	NHE	C1-C2-S-O2
3	A	402	NHE	C1-C2-S-O3
3	B	403	NHE	C2'-C1'-N-C1
3	B	403	NHE	C1-C2-S-O1

There are no ring outliers.

No monomer is involved in short contacts.

The following is a two-dimensional graphical depiction of Mogul quality analysis of bond lengths, bond angles, torsion angles, and ring geometry for all instances of the Ligand of Interest. In addition, ligands with molecular weight > 250 and outliers as shown on the validation Tables will also be included. For torsion angles, if less than 5% of the Mogul distribution of torsion angles is within 10 degrees of the torsion angle in question, then that torsion angle is considered an outlier. Any bond that is central to one or more torsion angles identified as an outlier by Mogul will be highlighted in the graph. For rings, the root-mean-square deviation (RMSD) between the ring in question and similar rings identified by Mogul is calculated over all ring torsion angles. If the average RMSD is greater than 60 degrees and the minimal RMSD between the ring in question and any Mogul-identified rings is also greater than 60 degrees, then that ring is considered an outlier. The outliers are highlighted in purple. The color gray indicates Mogul did not find sufficient equivalents in the CSD to analyse the geometry.





## 5.7 Other polymers [i](#)

There are no such residues in this entry.

## 5.8 Polymer linkage issues [i](#)

There are no chain breaks in this entry.



## 6 Fit of model and data

### 6.1 Protein, DNA and RNA chains

In the following table, the column labelled ‘#RSRZ> 2’ contains the number (and percentage) of RSRZ outliers, followed by percent RSRZ outliers for the chain as percentile scores relative to all X-ray entries and entries of similar resolution. The OWAB column contains the minimum, median, 95<sup>th</sup> percentile and maximum values of the occupancy-weighted average B-factor per residue. The column labelled ‘Q< 0.9’ lists the number of (and percentage) of residues with an average occupancy less than 0.9.

Mol	Chain	Analysed	<RSRZ>	#RSRZ>2	OWAB(Å <sup>2</sup> )	Q<0.9
1	A	322/340 (94%)	0.30	26 (8%) <b>12</b>   <b>11</b>	54, 97, 153, 207	0
1	B	321/340 (94%)	0.49	31 (9%) <b>7</b>   <b>7</b>	48, 98, 161, 207	0
All	All	643/680 (94%)	0.39	57 (8%) <b>9</b>   <b>9</b>	48, 97, 159, 207	0

All (57) RSRZ outliers are listed below:

Mol	Chain	Res	Type	RSRZ
1	B	51	GLY	6.8
1	A	7	LEU	6.6
1	B	196	ARG	6.0
1	B	309	LEU	5.9
1	A	197	LEU	5.7
1	A	6	LEU	5.6
1	B	197	LEU	5.2
1	B	201	LEU	5.1
1	A	27	PHE	5.0
1	B	198	LEU	5.0
1	A	201	LEU	4.8
1	A	9	LEU	4.3
1	B	19	ALA	4.2
1	A	4	GLU	3.7
1	A	73	TRP	3.6
1	B	315	PRO	3.5
1	B	15	ASP	3.4
1	B	188	ARG	3.4
1	B	312	PHE	3.3
1	A	183	THR	3.2
1	B	199	ASP	3.1
1	A	108	GLY	3.1
1	B	190	TRP	3.0
1	A	3	GLN	2.9

*Continued on next page...*

*Continued from previous page...*

Mol	Chain	Res	Type	RSRZ
1	A	196	ARG	2.8
1	A	205	LEU	2.8
1	B	195	PRO	2.7
1	B	313	THR	2.7
1	B	55	ASN	2.7
1	A	309	LEU	2.6
1	B	319	ALA	2.6
1	B	33	ARG	2.6
1	A	198	LEU	2.5
1	B	37	GLU	2.5
1	B	52	GLU	2.5
1	A	109	THR	2.4
1	B	317	GLU	2.3
1	B	73	TRP	2.3
1	B	11	ARG	2.3
1	B	184	VAL	2.3
1	A	61	GLU	2.3
1	A	295	PHE	2.3
1	B	314	ASP	2.2
1	A	8	LEU	2.2
1	B	45	PRO	2.2
1	A	111	ALA	2.2
1	A	204	TRP	2.2
1	A	281	LYS	2.2
1	B	295	PHE	2.2
1	B	25	GLN	2.1
1	B	9	LEU	2.1
1	A	34	ARG	2.1
1	A	207	ASP	2.1
1	B	200	ARG	2.1
1	A	18	TYR	2.1
1	B	16	ASP	2.1
1	A	199	ASP	2.0

## 6.2 Non-standard residues in protein, DNA, RNA chains [i](#)

There are no non-standard protein/DNA/RNA residues in this entry.

## 6.3 Carbohydrates [i](#)

There are no monosaccharides in this entry.

## 6.4 Ligands

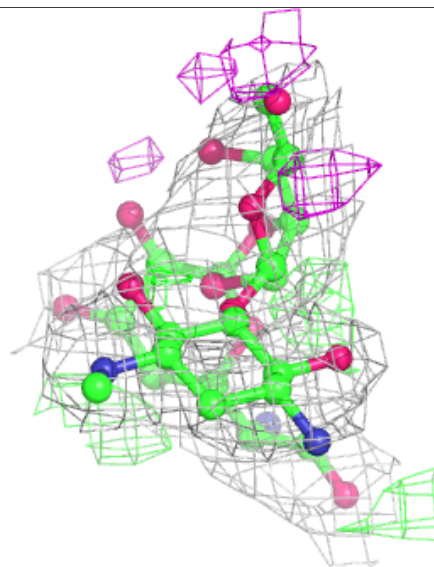
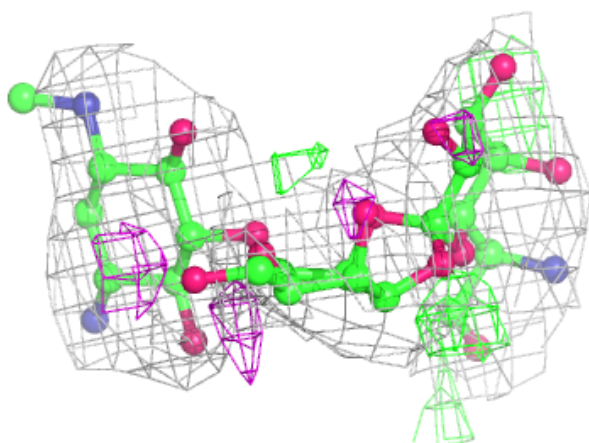
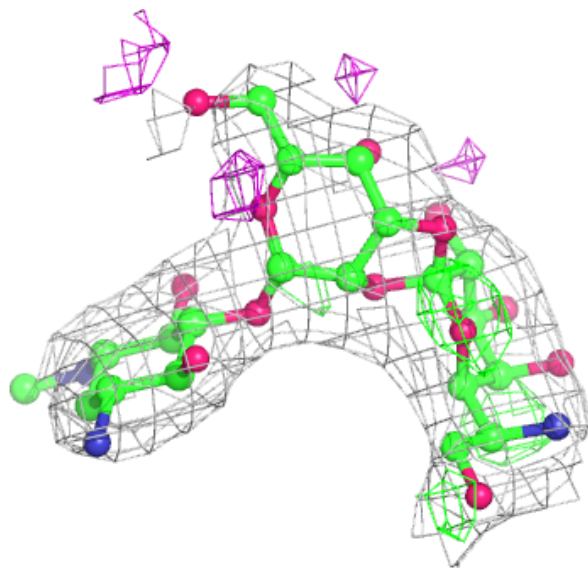
In the following table, the Atoms column lists the number of modelled atoms in the group and the number defined in the chemical component dictionary. The B-factors column lists the minimum, median, 95<sup>th</sup> percentile and maximum values of B factors of atoms in the group. The column labelled 'Q<0.9' lists the number of atoms with occupancy less than 0.9.

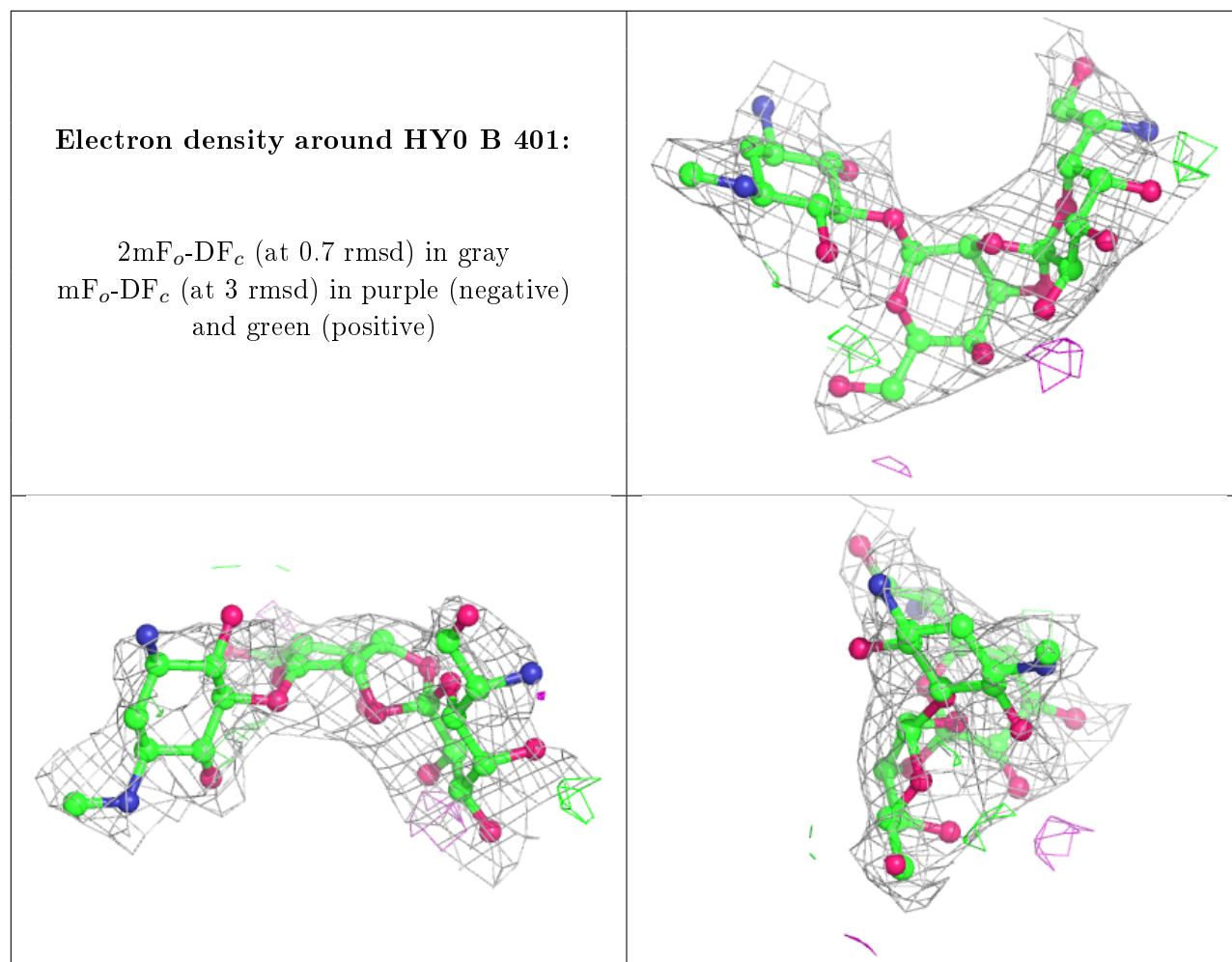
Mol	Type	Chain	Res	Atoms	RSCC	RSR	B-factors(Å <sup>2</sup> )	Q<0.9
3	NHE	A	402	13/13	0.71	0.41	107,120,198,200	0
3	NHE	B	403	13/13	0.82	0.23	79,112,165,167	0
2	HY0	A	401	36/36	0.87	0.17	75,105,126,131	0
2	HY0	B	401	36/36	0.89	0.16	99,120,143,152	0
4	FLC	B	402	13/13	0.90	0.13	51,60,67,74	0
4	FLC	A	403	13/13	0.94	0.11	55,66,83,86	0

The following is a graphical depiction of the model fit to experimental electron density of all instances of the Ligand of Interest. In addition, ligands with molecular weight > 250 and outliers as shown on the geometry validation Tables will also be included. Each fit is shown from different orientation to approximate a three-dimensional view.

**Electron density around HY0 A 401:**

$2mF_o-DF_c$  (at 0.7 rmsd) in gray  
 $mF_o-DF_c$  (at 3 rmsd) in purple (negative)  
and green (positive)





## 6.5 Other polymers [i](#)

There are no such residues in this entry.