



Full wwPDB EM Map/Model Validation Report ⓘ

Aug 20, 2020 – 01:49 PM BST

PDB ID : 6J0C
EMDB ID : EMD-9761
Title : Cryo-EM Structure of an Extracellular Contractile Injection System, PVC sheath complex in contracted state
Authors : Jiang, F.; Li, N.; Wang, X.; Cheng, J.; Huang, Y.; Yang, Y.; Yang, J.; Cai, B.; Wang, Y.; Jin, Q.; Gao, N.
Deposited on : 2018-12-23
Resolution : 3.70 Å(reported)

This is a Full wwPDB EM Map/Model Validation Report for a publicly released PDB entry.

We welcome your comments at validation@mail.wwpdb.org

A user guide is available at

<https://www.wwpdb.org/validation/2017/EMValidationReportHelp>

with specific help available everywhere you see the ⓘ symbol.

The following versions of software and data (see [references ⓘ](#)) were used in the production of this report:

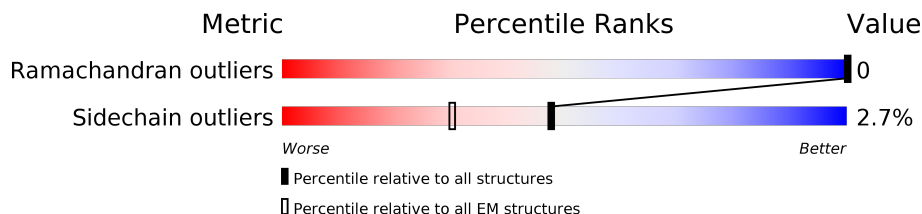
EMDB validation analysis : 0.0.0.dev33
MolProbity : 4.02b-467
Percentile statistics : 20191225.v01 (using entries in the PDB archive December 25th 2019)
Ideal geometry (proteins) : Engh & Huber (2001)
Ideal geometry (DNA, RNA) : Parkinson et al. (1996)
Validation Pipeline (wwPDB-VP) : 2.13

1 Overall quality at a glance

The following experimental techniques were used to determine the structure:
ELECTRON MICROSCOPY

The reported resolution of this entry is 3.70 Å.

Percentile scores (ranging between 0-100) for global validation metrics of the entry are shown in the following graphic. The table shows the number of entries on which the scores are based.



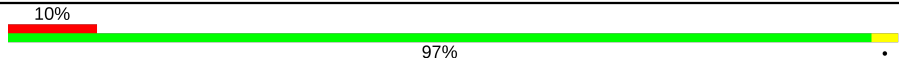
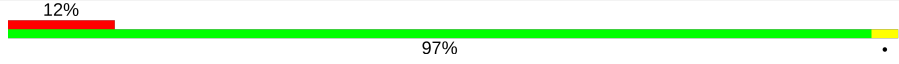
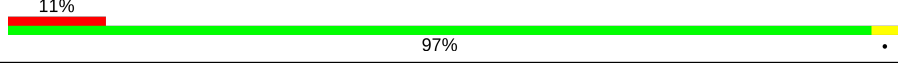
Metric	Whole archive (#Entries)	EM structures (#Entries)
Ramachandran outliers	154571	4023
Sidechain outliers	154315	3826

The table below summarises the geometric issues observed across the polymeric chains and their fit to the map. The red, orange, yellow and green segments on the bar indicate the fraction of residues that contain outliers for ≥ 3 , 2, 1 and 0 types of geometric quality criteria respectively. A grey segment represents the fraction of residues that are not modelled. The numeric value for each fraction is indicated below the corresponding segment, with a dot representing fractions $\leq 5\%$. The upper red bar (where present) indicates the fraction of residues that have poor fit to the EM map (all atom inclusion $< 40\%$). The numeric value is given above the bar.

Mol	Chain	Length	Quality of chain
1	A	355	10% (red), 97% (green), . (yellow)
1	B	355	8% (red), 97% (green), . (yellow)
1	C	355	9% (red), 97% (green), . (yellow)
1	D	355	10% (red), 97% (green), . (yellow)
1	E	355	9% (red), 97% (green), . (yellow)
1	F	355	10% (red), 97% (green), . (yellow)
1	a	355	10% (red), 97% (green), . (yellow)
1	b	355	12% (red), 97% (green), . (yellow)
1	c	355	11% (red), 97% (green), . (yellow)

Continued on next page...

Continued from previous page...

Mol	Chain	Length	Quality of chain
1	d	355	 10% 97%
1	e	355	 12% 97%
1	f	355	 11% 97%

2 Entry composition [i](#)

There is only 1 type of molecule in this entry. The entry contains 33108 atoms, of which 0 are hydrogens and 0 are deuteriums.

In the tables below, the AltConf column contains the number of residues with at least one atom in alternate conformation and the Trace column contains the number of residues modelled with at most 2 atoms.

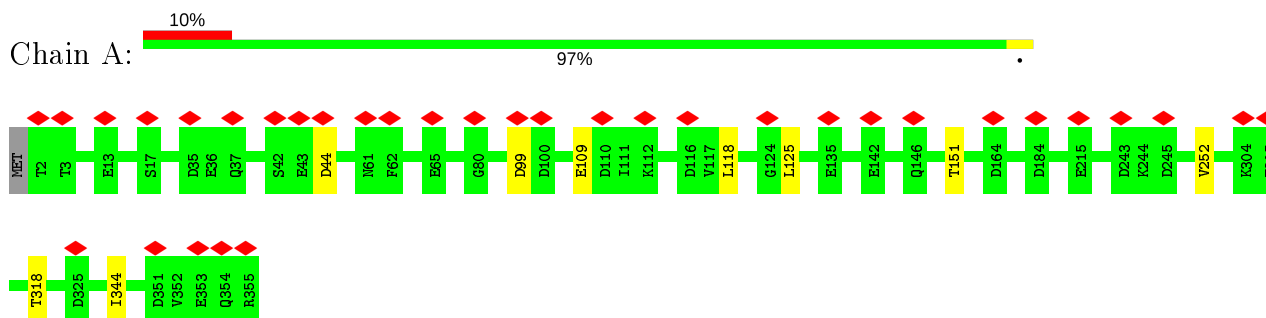
- Molecule 1 is a protein called Pvc2.

Mol	Chain	Residues	Atoms					AltConf	Trace
			Total	C	N	O	S		
1	A	354	2759	1760	457	533	9	0	0
1	B	354	2759	1760	457	533	9	0	0
1	C	354	2759	1760	457	533	9	0	0
1	D	354	2759	1760	457	533	9	0	0
1	E	354	2759	1760	457	533	9	0	0
1	F	354	2759	1760	457	533	9	0	0
1	a	354	2759	1760	457	533	9	0	0
1	b	354	2759	1760	457	533	9	0	0
1	c	354	2759	1760	457	533	9	0	0
1	d	354	2759	1760	457	533	9	0	0
1	e	354	2759	1760	457	533	9	0	0
1	f	354	2759	1760	457	533	9	0	0

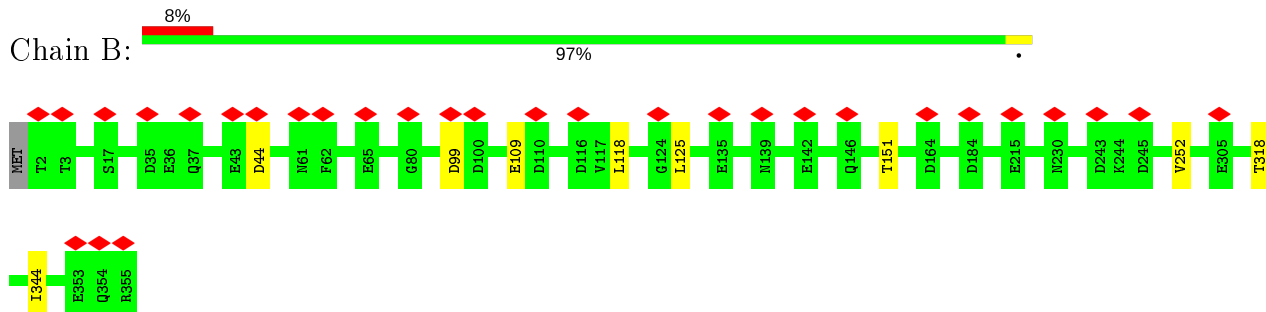
3 Residue-property plots [i](#)

These plots are drawn for all protein, RNA, DNA and oligosaccharide chains in the entry. The first graphic for a chain summarises the proportions of the various outlier classes displayed in the second graphic. The second graphic shows the sequence view annotated by issues in geometry and atom inclusion in map density. Residues are color-coded according to the number of geometric quality criteria for which they contain at least one outlier: green = 0, yellow = 1, orange = 2 and red = 3 or more. A red diamond above a residue indicates a poor fit to the EM map for this residue (all atom inclusion < 40%). Stretches of 2 or more consecutive residues without any outlier are shown as a green connector. Residues present in the sample, but not in the model, are shown in grey.

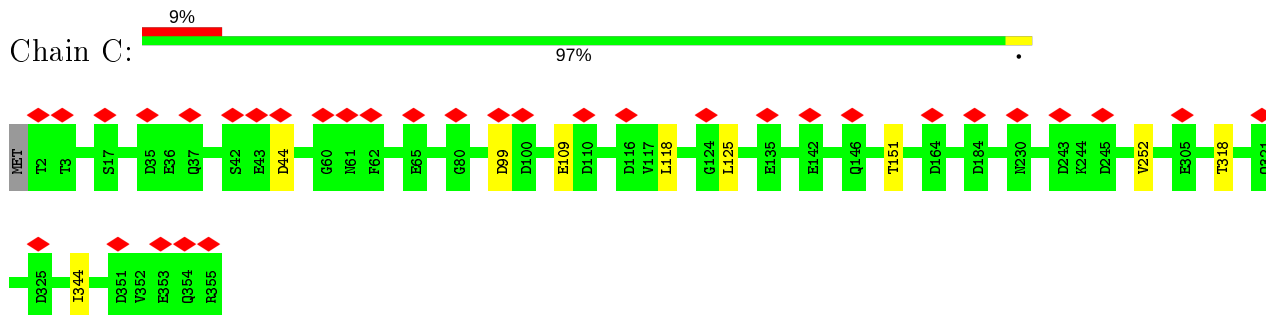
- Molecule 1: Pvc2



- Molecule 1: Pvc2

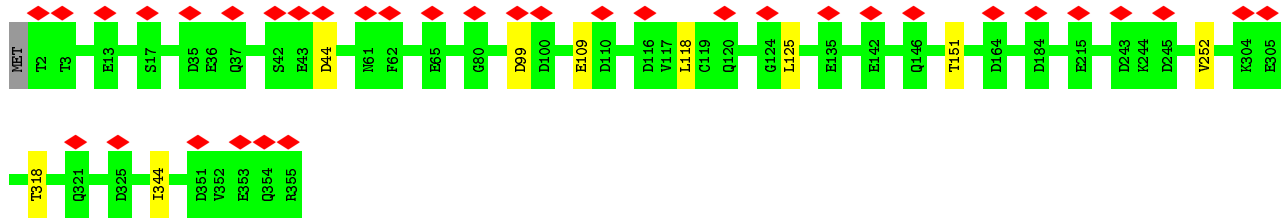


- Molecule 1: Pvc2

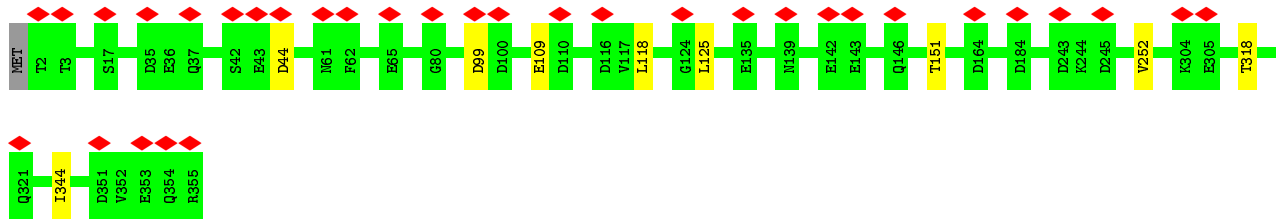


- Molecule 1: Pvc2

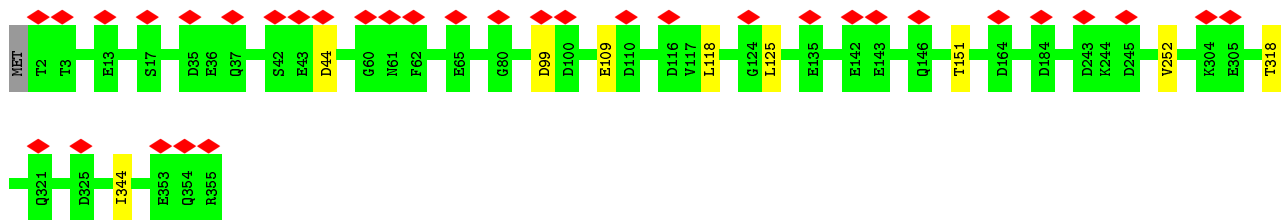




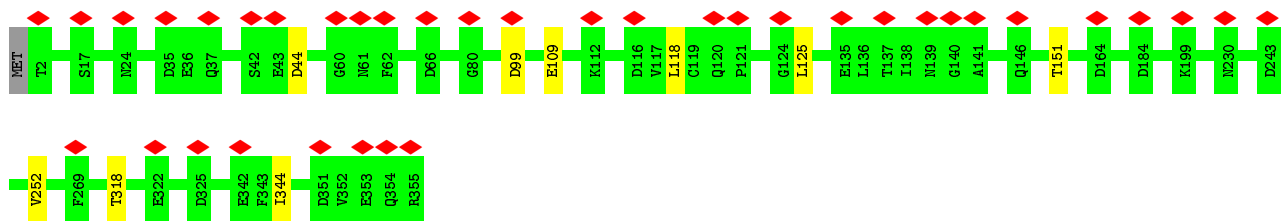
- Molecule 1: Pvc2



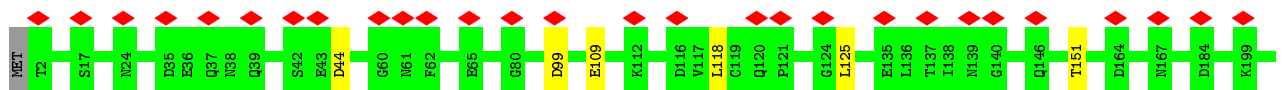
- Molecule 1: Pvc2

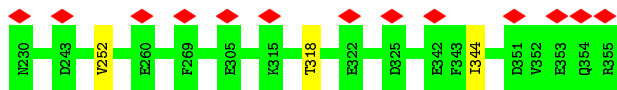


- Molecule 1: Pvc2

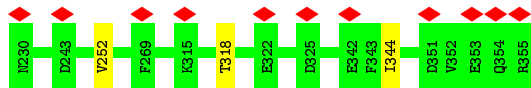
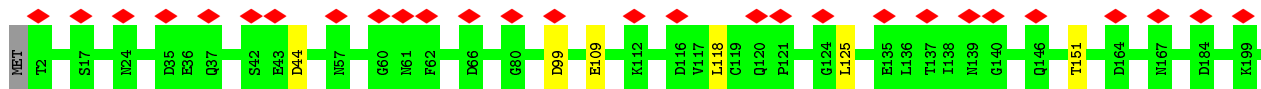


- Molecule 1: Pvc2

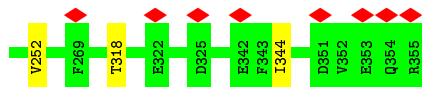
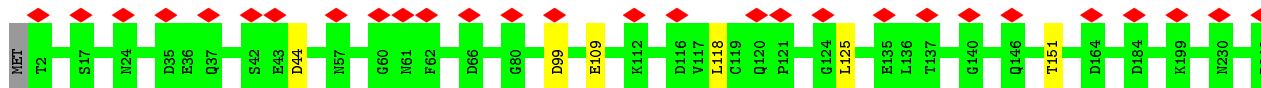




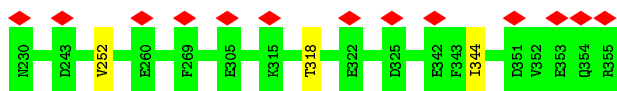
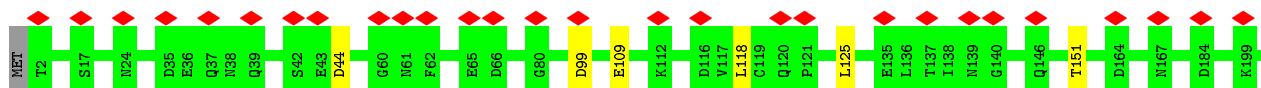
• Molecule 1: Pvc2



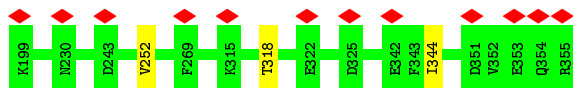
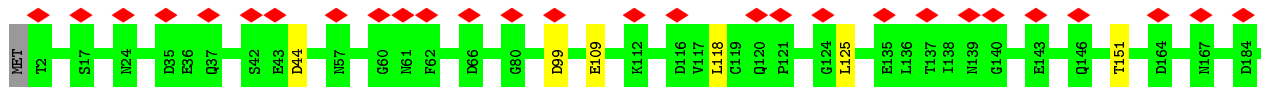
• Molecule 1: Pvc2



• Molecule 1: Pvc2



• Molecule 1: Pvc2



4 Experimental information

Property	Value	Source
EM reconstruction method	HELICAL	Depositor
Imposed symmetry	HELICAL, twist=31.4°, rise=17 Å, axial sym=C6	Depositor
Number of segments used	36000	Depositor
Resolution determination method	FSC 0.143 CUT-OFF	Depositor
CTF correction method	PHASE FLIPPING AND AMPLITUDE CORRECTION	Depositor
Microscope	FEI TITAN KRIOS	Depositor
Voltage (kV)	300	Depositor
Electron dose ($e^-/\text{Å}^2$)	46.4	Depositor
Minimum defocus (nm)	Not provided	Depositor
Maximum defocus (nm)	Not provided	Depositor
Magnification	Not provided	Depositor
Image detector	FEI FALCON II (4k x 4k)	Depositor
Maximum map value	0.513	Depositor
Minimum map value	-0.275	Depositor
Average map value	0.003	Depositor
Map value standard deviation	0.025	Depositor
Recommended contour level	0.1	Depositor
Map size (Å)	448.40002, 448.40002, 448.40002	Depositor
Map dimensions	400, 400, 400	Depositor
Map angles (°)	90.0, 90.0, 90.0	Depositor
Pixel spacing (Å)	1.121, 1.121, 1.121	Depositor

5 Model quality [i](#)

5.1 Standard geometry [i](#)

The Z score for a bond length (or angle) is the number of standard deviations the observed value is removed from the expected value. A bond length (or angle) with $|Z| > 5$ is considered an outlier worth inspection. RMSZ is the root-mean-square of all Z scores of the bond lengths (or angles).

Mol	Chain	Bond lengths		Bond angles	
		RMSZ	# Z >5	RMSZ	# Z >5
1	A	0.36	0/2819	0.56	1/3842 (0.0%)
1	B	0.36	0/2819	0.56	1/3842 (0.0%)
1	C	0.36	0/2819	0.56	1/3842 (0.0%)
1	D	0.36	0/2819	0.56	1/3842 (0.0%)
1	E	0.36	0/2819	0.56	1/3842 (0.0%)
1	F	0.36	0/2819	0.56	1/3842 (0.0%)
1	a	0.36	0/2819	0.56	1/3842 (0.0%)
1	b	0.36	0/2819	0.56	1/3842 (0.0%)
1	c	0.36	0/2819	0.56	1/3842 (0.0%)
1	d	0.36	0/2819	0.56	1/3842 (0.0%)
1	e	0.36	0/2819	0.56	1/3842 (0.0%)
1	f	0.36	0/2819	0.56	1/3842 (0.0%)
All	All	0.36	0/33828	0.56	12/46104 (0.0%)

There are no bond length outliers.

All (12) bond angle outliers are listed below:

Mol	Chain	Res	Type	Atoms	Z	Observed(°)	Ideal(°)
1	F	125	LEU	CA-CB-CG	7.26	131.99	115.30
1	e	125	LEU	CA-CB-CG	7.26	131.99	115.30
1	b	125	LEU	CA-CB-CG	7.25	131.98	115.30
1	D	125	LEU	CA-CB-CG	7.25	131.97	115.30
1	A	125	LEU	CA-CB-CG	7.25	131.97	115.30
1	a	125	LEU	CA-CB-CG	7.24	131.95	115.30
1	d	125	LEU	CA-CB-CG	7.24	131.95	115.30
1	C	125	LEU	CA-CB-CG	7.24	131.94	115.30
1	E	125	LEU	CA-CB-CG	7.24	131.94	115.30
1	c	125	LEU	CA-CB-CG	7.23	131.93	115.30
1	B	125	LEU	CA-CB-CG	7.23	131.92	115.30
1	f	125	LEU	CA-CB-CG	7.22	131.91	115.30

There are no chirality outliers.

There are no planarity outliers.

5.2 Too-close contacts [i](#)

Due to software issues we are unable to calculate clashes - this section is therefore empty.

5.3 Torsion angles [i](#)

5.3.1 Protein backbone [i](#)

In the following table, the Percentiles column shows the percent Ramachandran outliers of the chain as a percentile score with respect to all PDB entries followed by that with respect to all EM entries.

The Analysed column shows the number of residues for which the backbone conformation was analysed, and the total number of residues.

Mol	Chain	Analysed	Favoured	Allowed	Outliers	Percentiles	
1	A	352/355 (99%)	329 (94%)	23 (6%)	0	100	100
1	B	352/355 (99%)	329 (94%)	23 (6%)	0	100	100
1	C	352/355 (99%)	329 (94%)	23 (6%)	0	100	100
1	D	352/355 (99%)	329 (94%)	23 (6%)	0	100	100
1	E	352/355 (99%)	329 (94%)	23 (6%)	0	100	100
1	F	352/355 (99%)	329 (94%)	23 (6%)	0	100	100
1	a	352/355 (99%)	329 (94%)	23 (6%)	0	100	100
1	b	352/355 (99%)	329 (94%)	23 (6%)	0	100	100
1	c	352/355 (99%)	329 (94%)	23 (6%)	0	100	100
1	d	352/355 (99%)	329 (94%)	23 (6%)	0	100	100
1	e	352/355 (99%)	329 (94%)	23 (6%)	0	100	100
1	f	352/355 (99%)	329 (94%)	23 (6%)	0	100	100
All	All	4224/4260 (99%)	3948 (94%)	276 (6%)	0	100	100

There are no Ramachandran outliers to report.

5.3.2 Protein sidechains [i](#)

In the following table, the Percentiles column shows the percent sidechain outliers of the chain as a percentile score with respect to all PDB entries followed by that with respect to all EM entries.

The Analysed column shows the number of residues for which the sidechain conformation was analysed, and the total number of residues.

Mol	Chain	Analysed	Rotameric	Outliers	Percentiles	
1	A	291/294 (99%)	283 (97%)	8 (3%)	44	68
1	B	291/294 (99%)	283 (97%)	8 (3%)	44	68
1	C	291/294 (99%)	283 (97%)	8 (3%)	44	68
1	D	291/294 (99%)	283 (97%)	8 (3%)	44	68
1	E	291/294 (99%)	283 (97%)	8 (3%)	44	68
1	F	291/294 (99%)	283 (97%)	8 (3%)	44	68
1	a	291/294 (99%)	283 (97%)	8 (3%)	44	68
1	b	291/294 (99%)	283 (97%)	8 (3%)	44	68
1	c	291/294 (99%)	283 (97%)	8 (3%)	44	68
1	d	291/294 (99%)	283 (97%)	8 (3%)	44	68
1	e	291/294 (99%)	283 (97%)	8 (3%)	44	68
1	f	291/294 (99%)	283 (97%)	8 (3%)	44	68
All	All	3492/3528 (99%)	3396 (97%)	96 (3%)	48	68

All (96) residues with a non-rotameric sidechain are listed below:

Mol	Chain	Res	Type
1	A	44	ASP
1	A	99	ASP
1	A	109	GLU
1	A	118	LEU
1	A	151	THR
1	A	252	VAL
1	A	318	THR
1	A	344	ILE
1	B	44	ASP
1	B	99	ASP
1	B	109	GLU
1	B	118	LEU
1	B	151	THR
1	B	252	VAL
1	B	318	THR
1	B	344	ILE
1	C	44	ASP
1	C	99	ASP
1	C	109	GLU

Continued on next page...

Continued from previous page...

Mol	Chain	Res	Type
1	C	118	LEU
1	C	151	THR
1	C	252	VAL
1	C	318	THR
1	C	344	ILE
1	D	44	ASP
1	D	99	ASP
1	D	109	GLU
1	D	118	LEU
1	D	151	THR
1	D	252	VAL
1	D	318	THR
1	D	344	ILE
1	E	44	ASP
1	E	99	ASP
1	E	109	GLU
1	E	118	LEU
1	E	151	THR
1	E	252	VAL
1	E	318	THR
1	E	344	ILE
1	F	44	ASP
1	F	99	ASP
1	F	109	GLU
1	F	118	LEU
1	F	151	THR
1	F	252	VAL
1	F	318	THR
1	F	344	ILE
1	a	44	ASP
1	a	99	ASP
1	a	109	GLU
1	a	118	LEU
1	a	151	THR
1	a	252	VAL
1	a	318	THR
1	a	344	ILE
1	b	44	ASP
1	b	99	ASP
1	b	109	GLU
1	b	118	LEU
1	b	151	THR

Continued on next page...

Continued from previous page...

Mol	Chain	Res	Type
1	b	252	VAL
1	b	318	THR
1	b	344	ILE
1	c	44	ASP
1	c	99	ASP
1	c	109	GLU
1	c	118	LEU
1	c	151	THR
1	c	252	VAL
1	c	318	THR
1	c	344	ILE
1	d	44	ASP
1	d	99	ASP
1	d	109	GLU
1	d	118	LEU
1	d	151	THR
1	d	252	VAL
1	d	318	THR
1	d	344	ILE
1	e	44	ASP
1	e	99	ASP
1	e	109	GLU
1	e	118	LEU
1	e	151	THR
1	e	252	VAL
1	e	318	THR
1	e	344	ILE
1	f	44	ASP
1	f	99	ASP
1	f	109	GLU
1	f	118	LEU
1	f	151	THR
1	f	252	VAL
1	f	318	THR
1	f	344	ILE

Some sidechains can be flipped to improve hydrogen bonding and reduce clashes. All (56) such sidechains are listed below:

Mol	Chain	Res	Type
1	A	57	ASN
1	A	78	ASN
1	A	195	ASN

Continued on next page...

Continued from previous page...

Mol	Chain	Res	Type
1	A	246	ASN
1	B	57	ASN
1	B	63	ASN
1	B	78	ASN
1	B	195	ASN
1	B	246	ASN
1	C	57	ASN
1	C	78	ASN
1	C	195	ASN
1	C	246	ASN
1	D	57	ASN
1	D	78	ASN
1	D	195	ASN
1	D	246	ASN
1	E	57	ASN
1	E	78	ASN
1	E	195	ASN
1	E	246	ASN
1	F	57	ASN
1	F	78	ASN
1	F	195	ASN
1	F	246	ASN
1	a	57	ASN
1	a	63	ASN
1	a	78	ASN
1	a	195	ASN
1	a	246	ASN
1	a	350	GLN
1	b	57	ASN
1	b	78	ASN
1	b	195	ASN
1	b	246	ASN
1	b	350	GLN
1	c	57	ASN
1	c	78	ASN
1	c	195	ASN
1	c	246	ASN
1	c	350	GLN
1	d	57	ASN
1	d	78	ASN
1	d	195	ASN
1	d	246	ASN

Continued on next page...

Continued from previous page...

Mol	Chain	Res	Type
1	d	350	GLN
1	e	57	ASN
1	e	78	ASN
1	e	195	ASN
1	e	246	ASN
1	e	350	GLN
1	f	57	ASN
1	f	78	ASN
1	f	195	ASN
1	f	246	ASN
1	f	350	GLN

5.3.3 RNA [i](#)

There are no RNA molecules in this entry.

5.4 Non-standard residues in protein, DNA, RNA chains [i](#)

There are no non-standard protein/DNA/RNA residues in this entry.

5.5 Carbohydrates [i](#)

There are no monosaccharides in this entry.

5.6 Ligand geometry [i](#)

There are no ligands in this entry.

5.7 Other polymers [i](#)

There are no such residues in this entry.

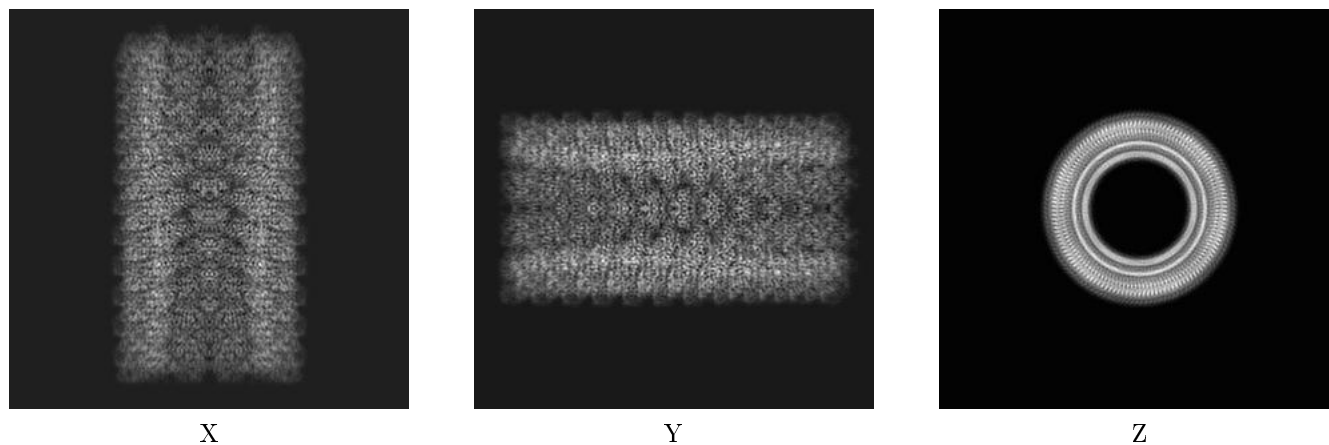
5.8 Polymer linkage issues [i](#)

There are no chain breaks in this entry.

6 Map visualisation [i](#)

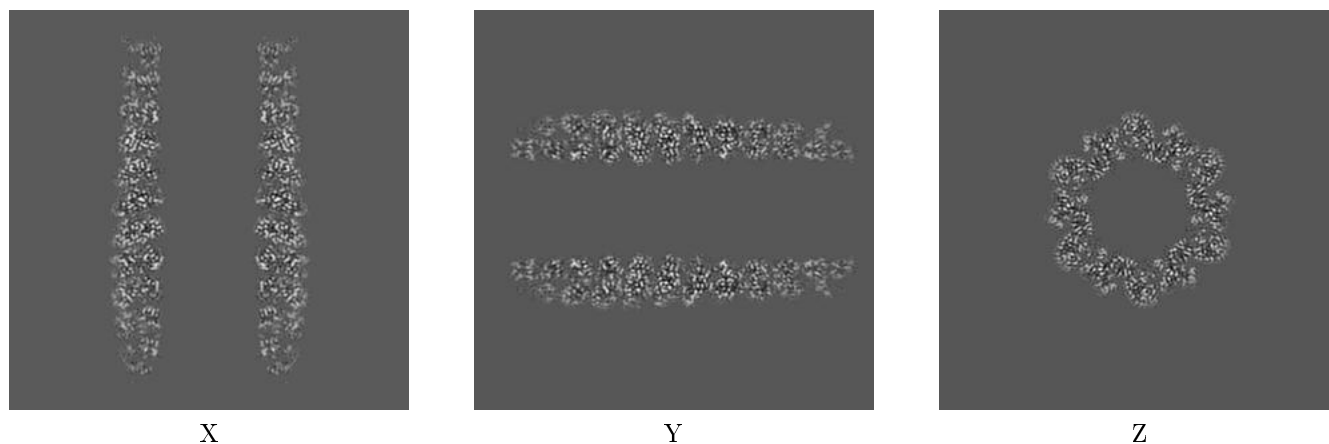
This section contains visualisations of the EMDB entry EMD-9761. These are intended to permit visual inspection of the internal detail of the map and identification of artifacts.

6.1 Orthogonal projections [i](#)



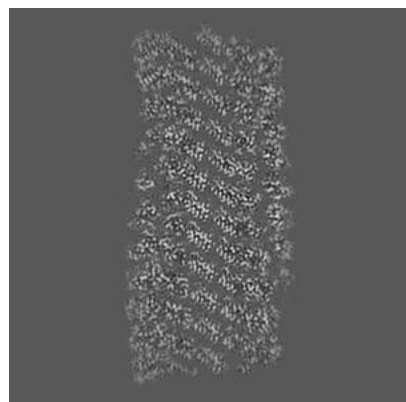
The images above show the map projected in three orthogonal projections, in greyscale.

6.2 Central slices [i](#)

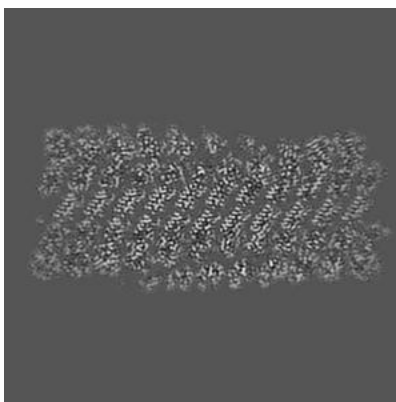


The images above show central slices of the map in three orthogonal directions, in greyscale.

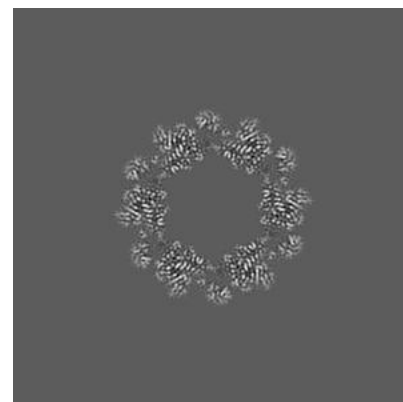
6.3 Largest variance slices [i](#)



X Index: 148



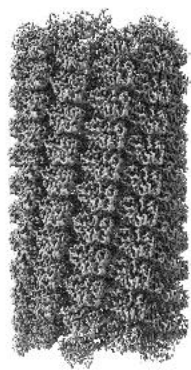
Y Index: 147



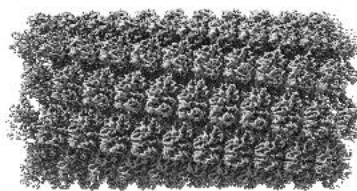
Z Index: 195

The images above show the highest variance slices of the map in three orthogonal directions, in greyscale.

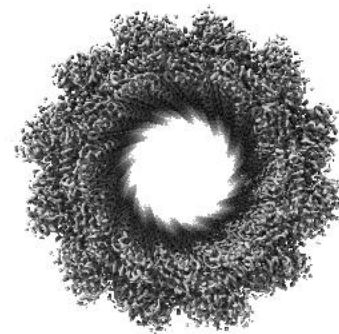
6.4 Orthogonal surface views [i](#)



X



Y



Z

The images above show the 3D surface view of the map at the recommended contour level 0.1. This in conjunction with the slice images can indicate whether an appropriate contour level has been selected.

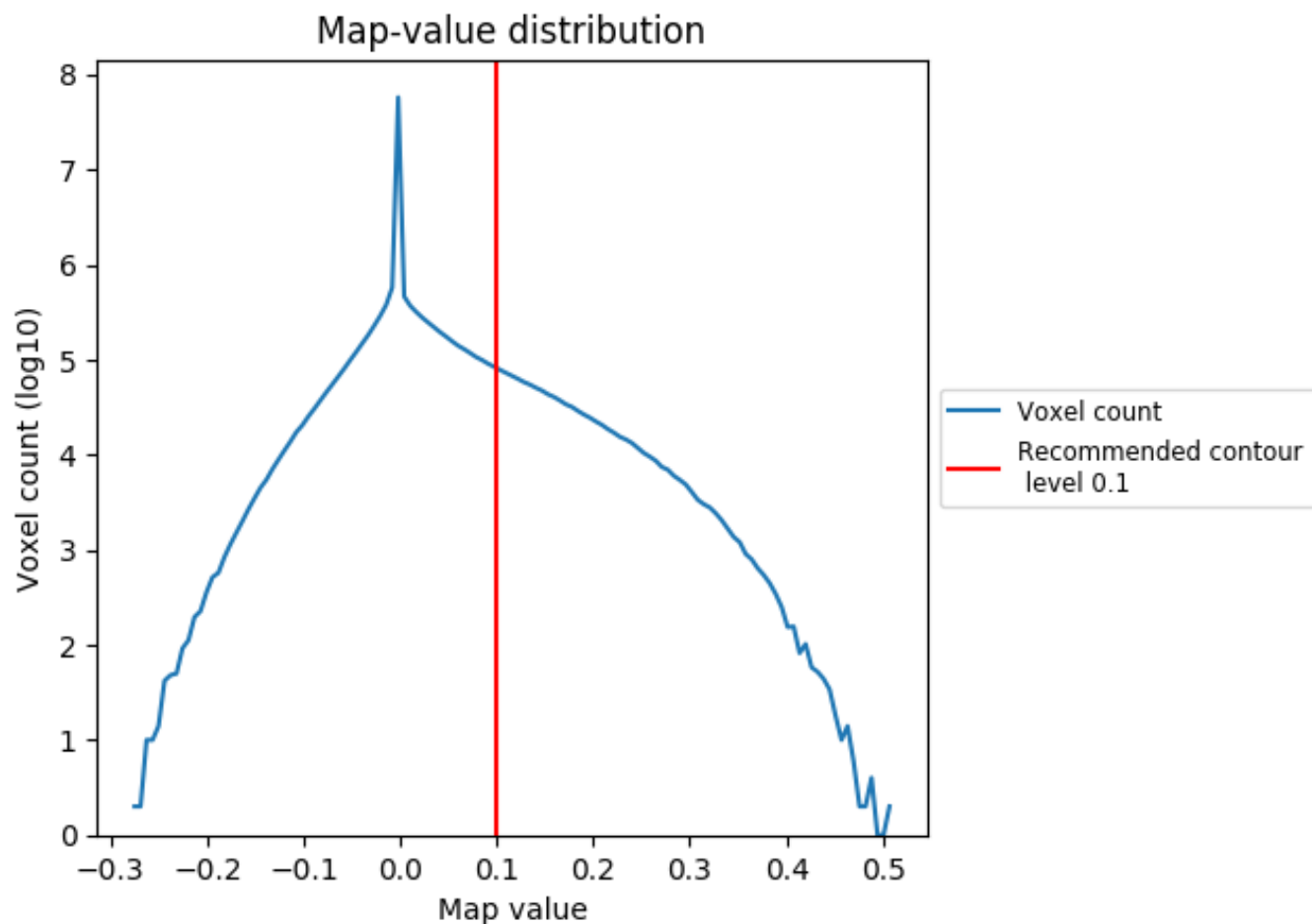
6.5 Mask visualisation [i](#)

This section was not generated. No masks were provided.

7 Map analysis [i](#)

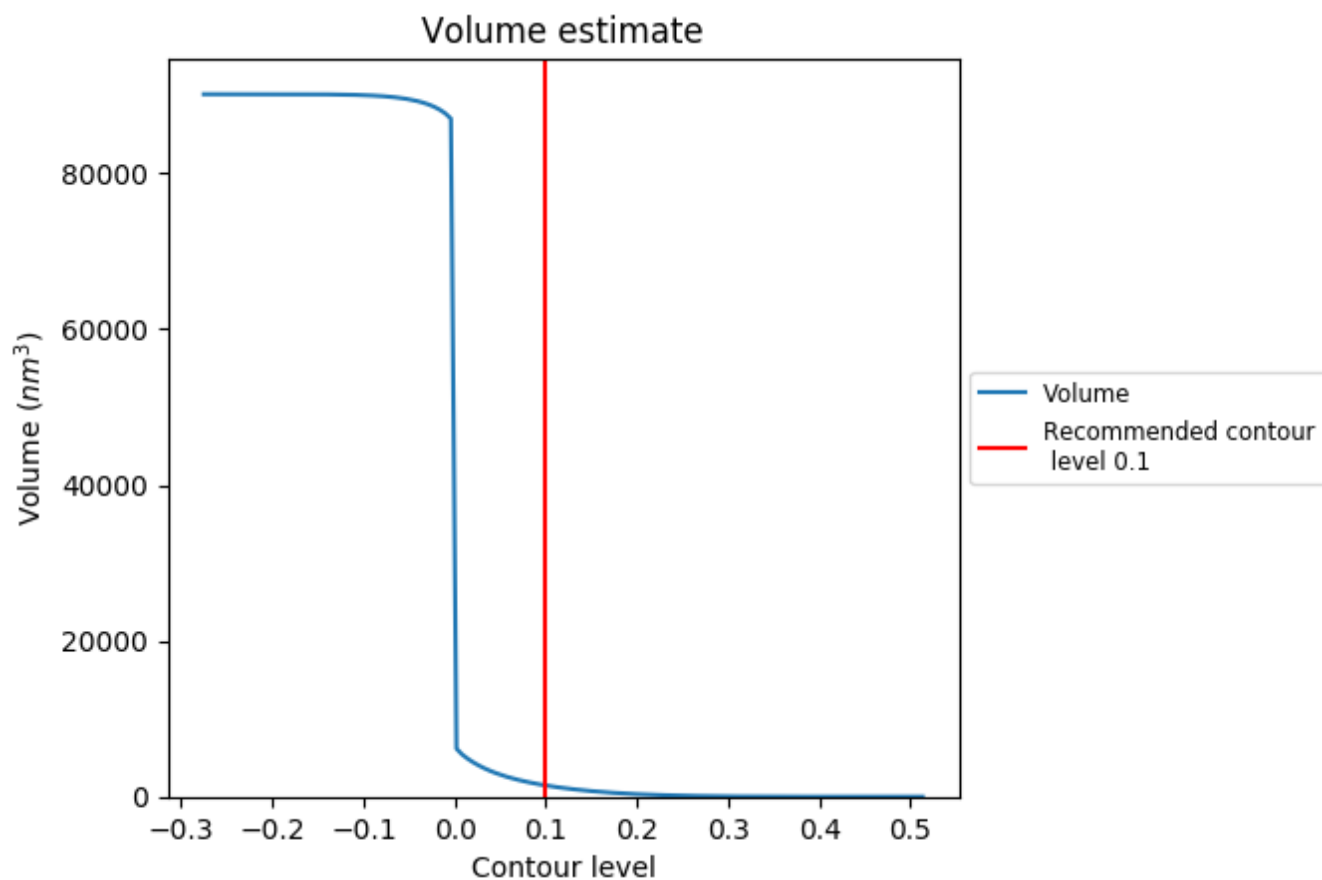
This section contains the results of statistical analysis of the map.

7.1 Map-value distribution [i](#)



The map-value distribution is plotted in 128 intervals along the x-axis. The y-axis is logarithmic. A spike in this graph at zero usually indicates that the volume has been masked.

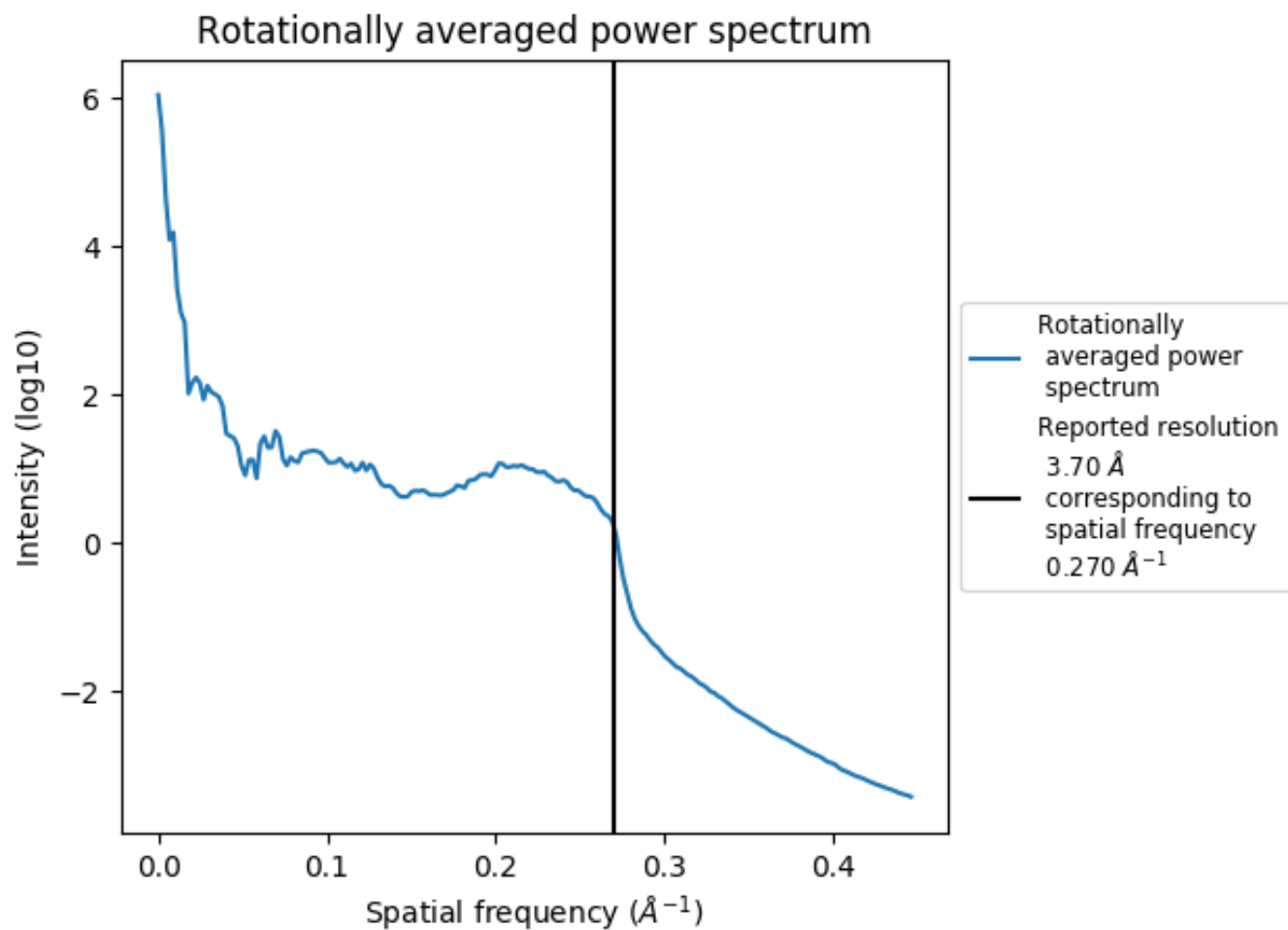
7.2 Volume estimate [i](#)



The volume at the recommended contour level is 1443 nm^3 ; this corresponds to an approximate mass of 1303 kDa.

The volume estimate graph shows how the enclosed volume varies with the contour level. The recommended contour level is shown as a vertical line and the intersection between the line and the curve gives the volume of the enclosed surface at the given level.

7.3 Rotationally averaged power spectrum [i](#)



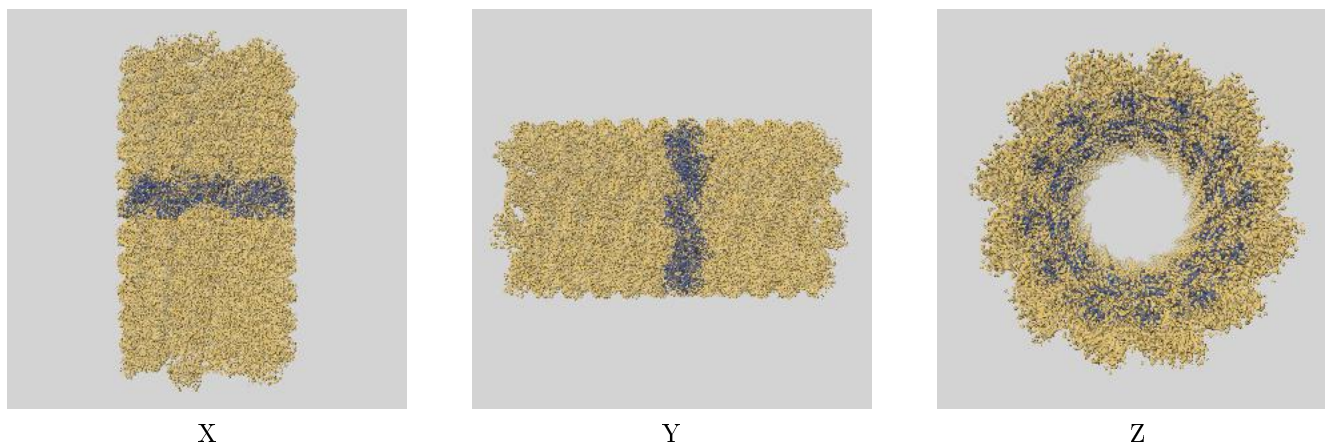
8 Fourier-Shell correlation

This section was not generated. No FSC curve or half maps provided.

9 Map-model fit [i](#)

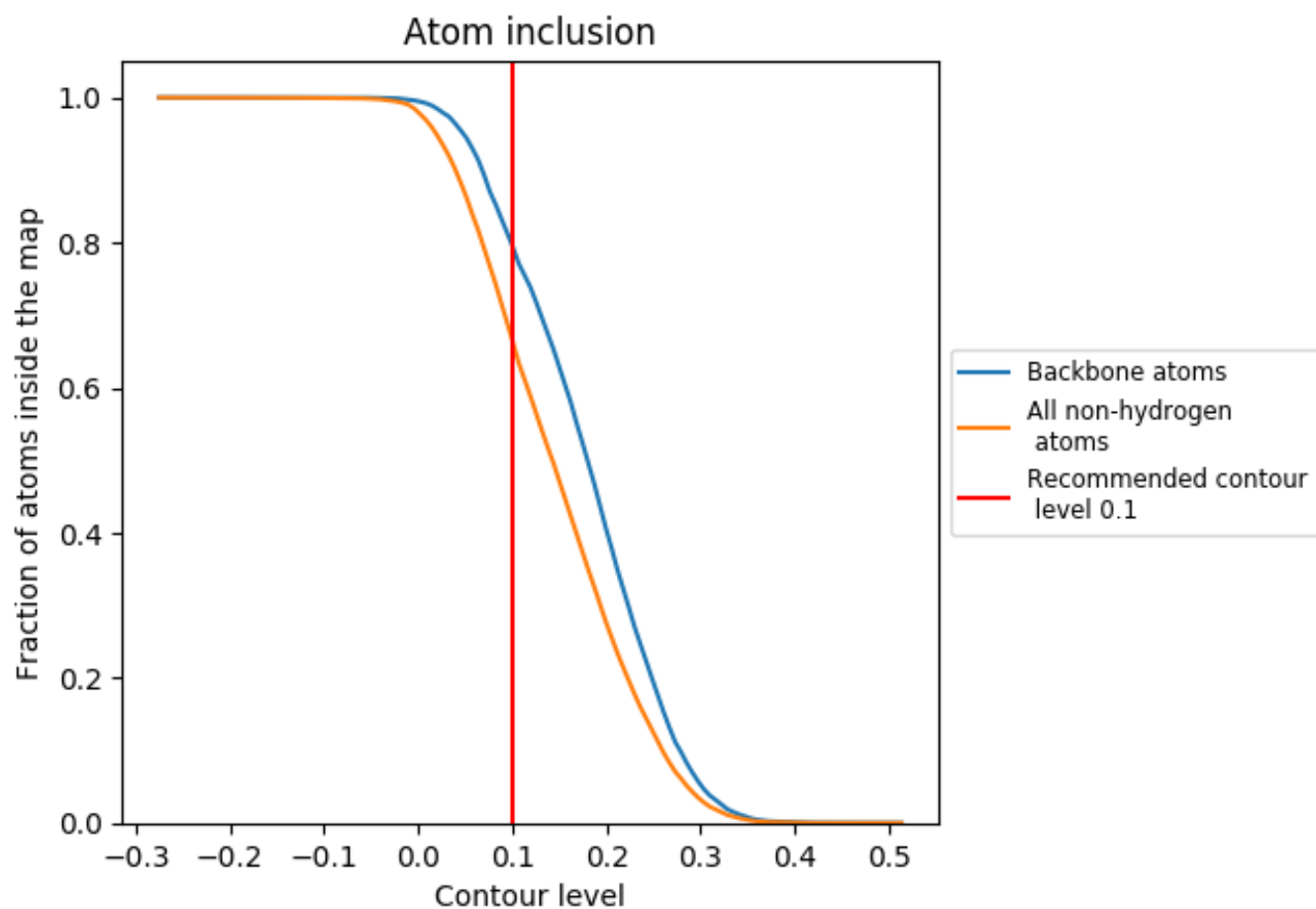
This section contains information regarding the fit between EMDB map EMD-9761 and PDB model 6J0C. Per-residue inclusion information can be found in section 3 on page 5.

9.1 Map-model overlay [i](#)



The images above show the 3D surface view of the map at the recommended contour level 0.1 at 50% transparency in yellow overlaid with a ribbon representation of the model coloured in blue. These images allow for the visual assessment of the quality of fit between the atomic model and the map.

9.2 Atom inclusion [i](#)



At the recommended contour level, 80% of all backbone atoms, 67% of all non-hydrogen atoms, are inside the map.