



Full wwPDB X-ray Structure Validation Report ⓘ

Oct 23, 2023 – 02:42 PM JST

PDB ID : 8J3O
Title : Formate dehydrogenase wild-type enzyme from *Candida dubliniensis* complexed with NADH
Authors : Ma, W.; Zheng, Y.C.; Geng, Q.; Chen, C.
Deposited on : 2023-04-17
Resolution : 2.65 Å(reported)

This is a Full wwPDB X-ray Structure Validation Report for a publicly released PDB entry.

We welcome your comments at validation@mail.wwpdb.org

A user guide is available at

<https://www.wwpdb.org/validation/2017/XrayValidationReportHelp>

with specific help available everywhere you see the ⓘ symbol.

The types of validation reports are described at

<http://www.wwpdb.org/validation/2017/FAQs#types>.

The following versions of software and data (see [references ⓘ](#)) were used in the production of this report:

MolProbity : 4.02b-467
Mogul : 1.8.5 (274361), CSD as541be (2020)
Xtriage (Phenix) : 1.13
EDS : 2.36
buster-report : 1.1.7 (2018)
Percentile statistics : 20191225.v01 (using entries in the PDB archive December 25th 2019)
Refmac : 5.8.0158
CCP4 : 7.0.044 (Gargrove)
Ideal geometry (proteins) : Engh & Huber (2001)
Ideal geometry (DNA, RNA) : Parkinson et al. (1996)
Validation Pipeline (wwPDB-VP) : 2.36

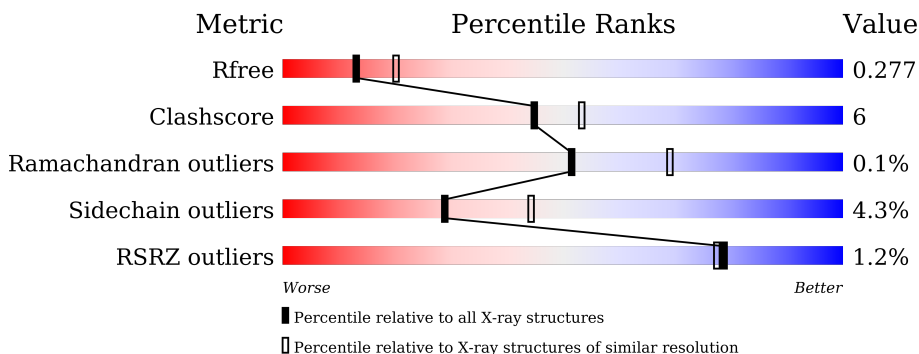
1 Overall quality at a glance

The following experimental techniques were used to determine the structure:

X-RAY DIFFRACTION





The reported resolution of this entry is 2.65 Å.

Percentile scores (ranging between 0-100) for global validation metrics of the entry are shown in the following graphic. The table shows the number of entries on which the scores are based.



Metric	Whole archive (#Entries)	Similar resolution (#Entries, resolution range(Å))
R_{free}	130704	1332 (2.68-2.64)
Clashscore	141614	1374 (2.68-2.64)
Ramachandran outliers	138981	1349 (2.68-2.64)
Sidechain outliers	138945	1349 (2.68-2.64)
RSRZ outliers	127900	1318 (2.68-2.64)

The table below summarises the geometric issues observed across the polymeric chains and their fit to the electron density. The red, orange, yellow and green segments of the lower bar indicate the fraction of residues that contain outliers for ≥ 3 , 2, 1 and 0 types of geometric quality criteria respectively. A grey segment represents the fraction of residues that are not modelled. The numeric value for each fraction is indicated below the corresponding segment, with a dot representing fractions $\leq 5\%$. The upper red bar (where present) indicates the fraction of residues that have poor fit to the electron density. The numeric value is given above the bar.

Mol	Chain	Length	Quality of chain
1	A	386	 2% 78% 17% ..
1	B	386	 2% 82% 13% ..
1	C	386	 % 81% 13% • 5%
1	D	386	 % 77% 16% • 5%

2 Entry composition [i](#)

There are 4 unique types of molecules in this entry. The entry contains 11731 atoms, of which 0 are hydrogens and 0 are deuteriums.

In the tables below, the ZeroOcc column contains the number of atoms modelled with zero occupancy, the AltConf column contains the number of residues with at least one atom in alternate conformation and the Trace column contains the number of residues modelled with at most 2 atoms.

- Molecule 1 is a protein called Formate dehydrogenase.

Mol	Chain	Residues	Atoms					ZeroOcc	AltConf	Trace
			Total	C	N	O	S			
1	A	372	2900	1847	490	551	12	0	0	0
1	B	373	2915	1855	495	553	12	0	1	0
1	C	367	2858	1820	484	542	12	0	0	0
1	D	365	2841	1808	482	539	12	0	0	0

There are 28 discrepancies between the modelled and reference sequences:

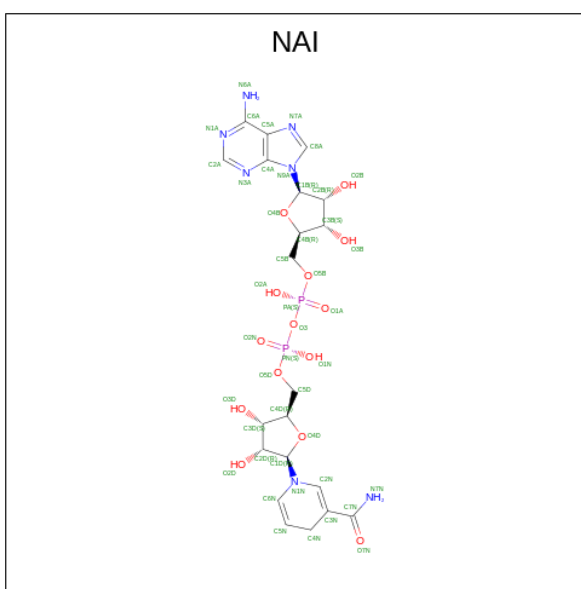
Chain	Residue	Modelled	Actual	Comment	Reference
A	-6	MET	-	initiating methionine	UNP B9WHT3
A	-5	HIS	-	expression tag	UNP B9WHT3
A	-4	HIS	-	expression tag	UNP B9WHT3
A	-3	HIS	-	expression tag	UNP B9WHT3
A	-2	HIS	-	expression tag	UNP B9WHT3
A	-1	HIS	-	expression tag	UNP B9WHT3
A	0	HIS	-	expression tag	UNP B9WHT3
B	-6	MET	-	initiating methionine	UNP B9WHT3
B	-5	HIS	-	expression tag	UNP B9WHT3
B	-4	HIS	-	expression tag	UNP B9WHT3
B	-3	HIS	-	expression tag	UNP B9WHT3
B	-2	HIS	-	expression tag	UNP B9WHT3
B	-1	HIS	-	expression tag	UNP B9WHT3
B	0	HIS	-	expression tag	UNP B9WHT3
C	-6	MET	-	initiating methionine	UNP B9WHT3
C	-5	HIS	-	expression tag	UNP B9WHT3
C	-4	HIS	-	expression tag	UNP B9WHT3
C	-3	HIS	-	expression tag	UNP B9WHT3
C	-2	HIS	-	expression tag	UNP B9WHT3
C	-1	HIS	-	expression tag	UNP B9WHT3
C	0	HIS	-	expression tag	UNP B9WHT3

Continued on next page...

Continued from previous page...

Chain	Residue	Modelled	Actual	Comment	Reference
D	-6	MET	-	initiating methionine	UNP B9WHT3
D	-5	HIS	-	expression tag	UNP B9WHT3
D	-4	HIS	-	expression tag	UNP B9WHT3
D	-3	HIS	-	expression tag	UNP B9WHT3
D	-2	HIS	-	expression tag	UNP B9WHT3
D	-1	HIS	-	expression tag	UNP B9WHT3
D	0	HIS	-	expression tag	UNP B9WHT3

- Molecule 2 is 1,4-DIHYDRONICOTINAMIDE ADENINE DINUCLEOTIDE (three-letter code: NAI) (formula: C₂₁H₂₉N₇O₁₄P₂) (labeled as "Ligand of Interest" by depositor).



Mol	Chain	Residues	Atoms				ZeroOcc	AltConf	
			Total	C	N	O			P
2	A	1	Total	C	N	O	P	0	0
			44	21	7	14	2		
2	B	1	Total	C	N	O	P	0	0
			44	21	7	14	2		
2	C	1	Total	C	N	O	P	0	0
			26	10	1	13	2		
2	D	1	Total	C	N	O	P	0	0
			44	21	7	14	2		

- Molecule 3 is MAGNESIUM ION (three-letter code: MG) (formula: Mg).

Mol	Chain	Residues	Atoms		ZeroOcc	AltConf
3	B	1	Total	Mg	0	0
			1	1		

Continued on next page...

Continued from previous page...

Mol	Chain	Residues	Atoms		ZeroOcc	AltConf
3	C	1	Total 1	Mg 1	0	0
3	D	1	Total 1	Mg 1	0	0

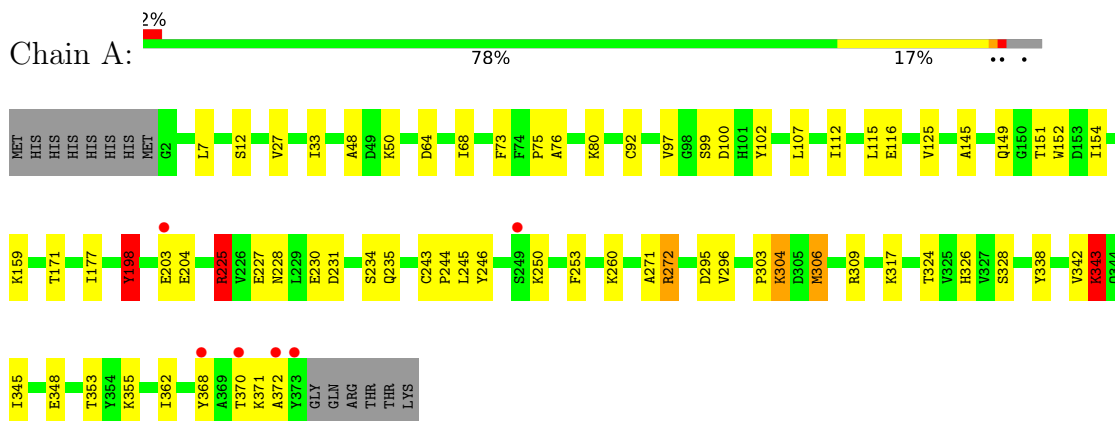
- Molecule 4 is water.

Mol	Chain	Residues	Atoms		ZeroOcc	AltConf
4	A	15	Total 15	O 15	0	0
4	B	16	Total 16	O 16	0	0
4	C	7	Total 7	O 7	0	0
4	D	18	Total 18	O 18	0	0

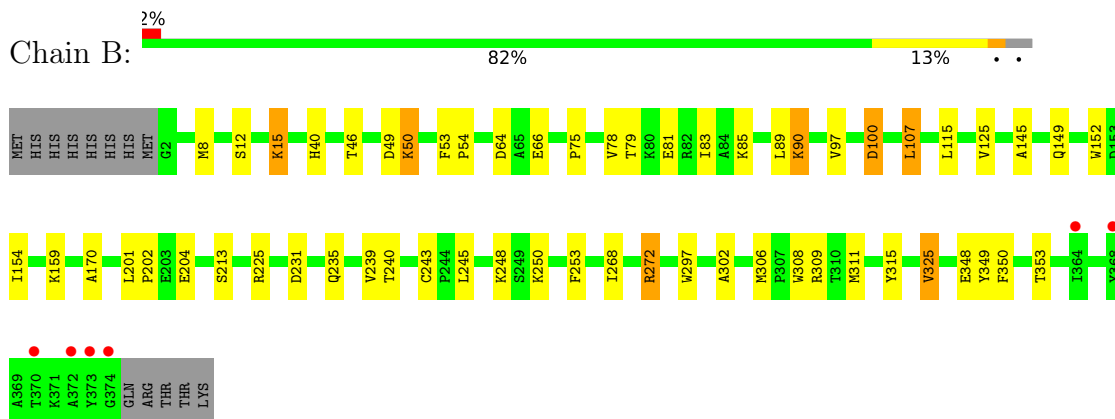
3 Residue-property plots

These plots are drawn for all protein, RNA, DNA and oligosaccharide chains in the entry. The first graphic for a chain summarises the proportions of the various outlier classes displayed in the second graphic. The second graphic shows the sequence view annotated by issues in geometry and electron density. Residues are color-coded according to the number of geometric quality criteria for which they contain at least one outlier: green = 0, yellow = 1, orange = 2 and red = 3 or more. A red dot above a residue indicates a poor fit to the electron density ($RSRZ > 2$). Stretches of 2 or more consecutive residues without any outlier are shown as a green connector. Residues present in the sample, but not in the model, are shown in grey.

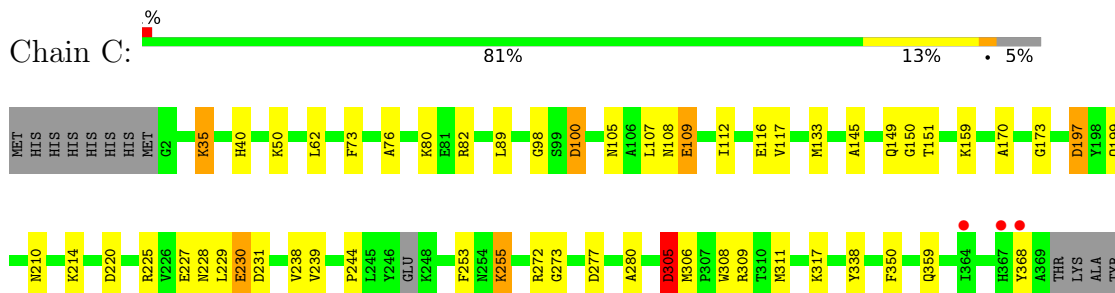
- Molecule 1: Formate dehydrogenase



- Molecule 1: Formate dehydrogenase



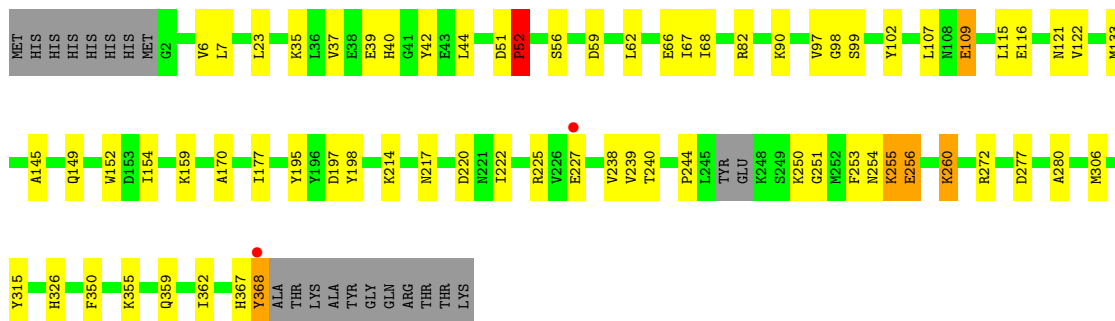
- Molecule 1: Formate dehydrogenase



GLY
GLN
ARG
THR
LYS

• Molecule 1: Formate dehydrogenase

Chain D: %



4 Data and refinement statistics

Property	Value	Source
Space group	P 1	Depositor
Cell constants a, b, c, α , β , γ	51.40Å 60.16Å 120.48Å 90.00° 90.00° 111.02°	Depositor
Resolution (Å)	44.58 – 2.65 47.98 – 2.65	Depositor EDS
% Data completeness (in resolution range)	98.1 (44.58-2.65) 98.1 (47.98-2.65)	Depositor EDS
R_{merge}	0.22	Depositor
R_{sym}	(Not available)	Depositor
$\langle I/\sigma(I) \rangle$ ¹	1.86 (at 2.65Å)	Xtrriage
Refinement program	PHENIX (1.19.2_4158: ???)	Depositor
R, R_{free}	0.226 , 0.278 0.225 , 0.277	Depositor DCC
R_{free} test set	1792 reflections (4.66%)	wwPDB-VP
Wilson B-factor (Å ²)	47.9	Xtrriage
Anisotropy	0.385	Xtrriage
Bulk solvent k_{sol} (e/Å ³), B_{sol} (Å ²)	0.33 , 20.7	EDS
L-test for twinning ²	$\langle L \rangle = 0.51$, $\langle L^2 \rangle = 0.35$	Xtrriage
Estimated twinning fraction	0.408 for -h,-k,l	Xtrriage
F_o, F_c correlation	0.93	EDS
Total number of atoms	11731	wwPDB-VP
Average B, all atoms (Å ²)	50.0	wwPDB-VP

Xtrriage's analysis on translational NCS is as follows: *The largest off-origin peak in the Patterson function is 5.38% of the height of the origin peak. No significant pseudotranslation is detected.*

¹Intensities estimated from amplitudes.

²Theoretical values of $\langle |L| \rangle$, $\langle L^2 \rangle$ for acentric reflections are 0.5, 0.333 respectively for untwinned datasets, and 0.375, 0.2 for perfectly twinned datasets.

5 Model quality [i](#)

5.1 Standard geometry [i](#)

Bond lengths and bond angles in the following residue types are not validated in this section: MG, NAI

The Z score for a bond length (or angle) is the number of standard deviations the observed value is removed from the expected value. A bond length (or angle) with $|Z| > 5$ is considered an outlier worth inspection. RMSZ is the root-mean-square of all Z scores of the bond lengths (or angles).

Mol	Chain	Bond lengths		Bond angles	
		RMSZ	# Z >5	RMSZ	# Z >5
1	A	0.31	0/2963	0.65	12/4019 (0.3%)
1	B	0.34	1/2978 (0.0%)	0.72	10/4038 (0.2%)
1	C	0.33	0/2919	0.68	10/3958 (0.3%)
1	D	0.38	2/2901 (0.1%)	0.73	8/3933 (0.2%)
All	All	0.34	3/11761 (0.0%)	0.70	40/15948 (0.3%)

Chiral center outliers are detected by calculating the chiral volume of a chiral center and verifying if the center is modelled as a planar moiety or with the opposite hand. A planarity outlier is detected by checking planarity of atoms in a peptide group, atoms in a mainchain group or atoms of a sidechain that are expected to be planar.

Mol	Chain	#Chirality outliers	#Planarity outliers
1	A	0	2
1	C	0	1
All	All	0	3

All (3) bond length outliers are listed below:

Mol	Chain	Res	Type	Atoms	Z	Observed(Å)	Ideal(Å)
1	D	260	LYS	CE-NZ	7.27	1.67	1.49
1	D	109	GLU	CD-OE2	-6.27	1.18	1.25
1	B	15	LYS	CD-CE	6.02	1.66	1.51

All (40) bond angle outliers are listed below:

Mol	Chain	Res	Type	Atoms	Z	Observed(°)	Ideal(°)
1	D	260	LYS	CD-CE-NZ	-15.09	77.00	111.70
1	D	52	PRO	CA-N-CD	-14.01	91.89	111.50
1	B	89	LEU	C-N-CA	10.41	147.73	121.70
1	B	15	LYS	CD-CE-NZ	-9.36	90.16	111.70

Continued on next page...

Continued from previous page...

Mol	Chain	Res	Type	Atoms	Z	Observed(°)	Ideal(°)
1	B	90	LYS	CD-CE-NZ	-9.34	90.21	111.70
1	B	325	VAL	CG1-CB-CG2	9.14	125.52	110.90
1	C	255	LYS	CG-CD-CE	-8.50	86.40	111.90
1	C	255	LYS	CB-CA-C	-8.16	94.07	110.40
1	B	15	LYS	CA-CB-CG	7.92	130.82	113.40
1	B	90	LYS	CA-CB-CG	7.70	130.33	113.40
1	A	198	TYR	CB-CG-CD2	-7.66	116.41	121.00
1	C	35	LYS	CA-CB-CG	7.30	129.47	113.40
1	B	15	LYS	CB-CG-CD	-7.24	92.77	111.60
1	D	52	PRO	CB-CA-C	7.06	129.65	112.00
1	A	355	LYS	CD-CE-NZ	-6.97	95.67	111.70
1	A	355	LYS	CA-CB-CG	-6.73	98.60	113.40
1	A	204	GLU	CB-CA-C	6.59	123.59	110.40
1	D	260	LYS	CB-CG-CD	6.45	128.38	111.60
1	A	304	LYS	CA-CB-CG	6.44	127.57	113.40
1	B	107	LEU	CB-CG-CD2	-6.31	100.27	111.00
1	D	260	LYS	CG-CD-CE	6.25	130.65	111.90
1	B	325	VAL	CA-CB-CG2	6.22	120.22	110.90
1	B	15	LYS	CG-CD-CE	-6.20	93.31	111.90
1	C	255	LYS	CD-CE-NZ	6.11	125.76	111.70
1	D	90	LYS	CB-CG-CD	6.07	127.39	111.60
1	A	198	TYR	CB-CG-CD1	5.91	124.54	121.00
1	C	109	GLU	CB-CA-C	-5.82	98.75	110.40
1	C	255	LYS	CB-CG-CD	5.76	126.58	111.60
1	A	198	TYR	CB-CA-C	-5.66	99.07	110.40
1	A	343	LYS	CB-CG-CD	5.40	125.65	111.60
1	A	343	LYS	CG-CD-CE	5.33	127.88	111.90
1	D	260	LYS	N-CA-CB	-5.29	101.07	110.60
1	C	35	LYS	CG-CD-CE	-5.27	96.09	111.90
1	C	230	GLU	CG-CD-OE2	-5.22	107.87	118.30
1	C	305	ASP	CB-CG-OD2	-5.21	113.61	118.30
1	D	260	LYS	CA-CB-CG	-5.14	102.10	113.40
1	A	204	GLU	CA-CB-CG	5.13	124.68	113.40
1	A	198	TYR	CA-CB-CG	5.09	123.07	113.40
1	A	204	GLU	N-CA-CB	-5.09	101.44	110.60
1	C	305	ASP	CB-CG-OD1	5.02	122.82	118.30

There are no chirality outliers.

All (3) planarity outliers are listed below:

Mol	Chain	Res	Type	Group
1	A	203	GLU	Peptide

Continued on next page...

Continued from previous page...

Mol	Chain	Res	Type	Group
1	A	225	ARG	Sidechain
1	C	109	GLU	Sidechain

5.2 Too-close contacts

In the following table, the Non-H and H(model) columns list the number of non-hydrogen atoms and hydrogen atoms in the chain respectively. The H(added) column lists the number of hydrogen atoms added and optimized by MolProbity. The Clashes column lists the number of clashes within the asymmetric unit, whereas Symm-Clashes lists symmetry-related clashes.

Mol	Chain	Non-H	H(model)	H(added)	Clashes	Symm-Clashes
1	A	2900	0	2888	45	0
1	B	2915	0	2902	33	1
1	C	2858	0	2847	33	1
1	D	2841	0	2832	41	0
2	A	44	0	27	5	0
2	B	44	0	27	6	0
2	C	26	0	15	2	0
2	D	44	0	26	7	0
3	B	1	0	0	0	0
3	C	1	0	0	0	0
3	D	1	0	0	0	0
4	A	15	0	0	0	1
4	B	16	0	0	0	0
4	C	7	0	0	0	0
4	D	18	0	0	2	1
All	All	11731	0	11564	150	2

The all-atom clashscore is defined as the number of clashes found per 1000 atoms (including hydrogen atoms). The all-atom clashscore for this structure is 6.

All (150) close contacts within the same asymmetric unit are listed below, sorted by their clash magnitude.

Atom-1	Atom-2	Interatomic distance (Å)	Clash overlap (Å)
1:D:109:GLU:OE2	4:D:501:HOH:O	1.91	0.86
1:A:225:ARG:NH1	1:A:227:GLU:HG2	1.94	0.83
1:B:50:LYS:NZ	1:B:75:PRO:O	2.13	0.82
1:A:244:PRO:HD3	2:A:401:NAI:H51A	1.61	0.80
1:C:62:LEU:HD11	1:C:82:ARG:HG2	1.68	0.76
1:C:100:ASP:OD2	1:C:272:ARG:HD3	1.87	0.74

Continued on next page...

Continued from previous page...

Atom-1	Atom-2	Interatomic distance (Å)	Clash overlap (Å)
1:A:198:TYR:OH	1:A:246:TYR:CZ	2.40	0.73
1:D:159:LYS:HD2	1:D:315:TYR:CZ	2.27	0.70
1:A:151:THR:O	1:C:309:ARG:NH2	2.25	0.69
1:D:62:LEU:HD11	1:D:82:ARG:HG2	1.74	0.68
1:A:198:TYR:OH	1:A:246:TYR:OH	1.82	0.67
1:A:225:ARG:HH12	1:A:227:GLU:HG2	1.58	0.67
1:C:228:ASN:OD1	1:C:230:GLU:HG2	1.95	0.66
1:D:197:ASP:OD1	2:D:401:NAI:O2B	2.12	0.66
1:D:256:GLU:O	1:D:260:LYS:HG3	1.95	0.66
1:B:79:THR:O	1:B:83:ILE:HG12	1.96	0.66
1:D:177:ILE:HD12	2:D:401:NAI:H51N	1.76	0.66
1:B:201:LEU:HD23	1:B:202:PRO:HD2	1.77	0.65
1:A:107:LEU:HD22	1:A:112:ILE:HG21	1.80	0.64
1:B:125:VAL:HG11	2:B:401:NAI:H5N	1.80	0.63
1:C:214:LYS:HG2	1:C:220:ASP:HA	1.78	0.63
1:A:33:ILE:HG22	1:A:343:LYS:HG3	1.79	0.63
1:C:305:ASP:N	1:C:305:ASP:OD1	2.32	0.62
1:A:145:ALA:O	1:A:149:GLN:HG2	1.98	0.62
1:A:245:LEU:HD11	1:A:250:LYS:HD2	1.82	0.62
1:B:125:VAL:HG21	2:B:401:NAI:H42N	1.82	0.61
1:B:152:TRP:NE1	1:B:154:ILE:HD11	2.16	0.60
1:C:105:ASN:HA	1:C:108:ASN:HB2	1.84	0.58
1:A:115:LEU:HB3	1:A:345:ILE:HD13	1.85	0.58
1:B:245:LEU:HD11	1:B:250:LYS:HD2	1.86	0.58
1:A:152:TRP:NE1	1:A:154:ILE:HD11	2.19	0.57
1:C:228:ASN:OD1	1:C:231:ASP:N	2.37	0.57
1:A:309:ARG:NH2	1:C:151:THR:O	2.36	0.57
1:C:225:ARG:HH11	1:C:227:GLU:HG2	1.68	0.57
1:C:197:ASP:HB3	1:C:199:GLN:O	2.05	0.56
1:D:98:GLY:N	1:D:116:GLU:OE2	2.36	0.56
1:C:225:ARG:NH1	1:C:227:GLU:HG2	2.21	0.56
1:A:50:LYS:NZ	1:A:75:PRO:O	2.27	0.55
1:A:230:GLU:CG	1:A:260:LYS:HD3	2.36	0.54
1:B:78:VAL:HG12	1:B:83:ILE:HD11	1.90	0.53
1:D:145:ALA:O	1:D:149:GLN:HG2	2.09	0.53
1:D:326:HIS:HE2	2:D:401:NAI:C7N	2.22	0.53
1:D:97:VAL:HB	2:D:401:NAI:H5N	1.90	0.53
1:D:367:HIS:O	1:D:368:TYR:HD1	1.92	0.53
1:B:83:ILE:HD12	1:B:107:LEU:HD21	1.92	0.52
1:A:244:PRO:HD2	2:A:401:NAI:C8A	2.39	0.52
1:D:170:ALA:O	1:D:239:VAL:HA	2.10	0.52

Continued on next page...

Continued from previous page...

Atom-1	Atom-2	Interatomic distance (Å)	Clash overlap (Å)
1:D:152:TRP:NE1	1:D:154:ILE:HD11	2.25	0.52
1:C:145:ALA:O	1:C:149:GLN:HG2	2.10	0.51
1:A:198:TYR:CZ	1:A:246:TYR:OH	2.54	0.51
1:D:116:GLU:CD	1:D:362:ILE:HD11	2.30	0.51
1:D:51:ASP:HB3	1:D:52:PRO:HD2	1.92	0.50
1:D:217:ASN:ND2	4:D:502:HOH:O	2.27	0.50
1:D:122:VAL:HG12	1:D:177:ILE:HG13	1.93	0.50
1:B:83:ILE:HD12	1:B:107:LEU:CD2	2.42	0.50
1:D:198:TYR:CZ	2:D:401:NAI:C5A	2.94	0.50
1:B:170:ALA:O	1:B:239:VAL:HA	2.12	0.50
1:D:37:VAL:HG11	1:D:44:LEU:HB2	1.93	0.49
1:A:27:VAL:HG21	1:A:48:ALA:HB2	1.94	0.49
1:D:56:SER:OG	1:D:59:ASP:OD2	2.27	0.49
1:B:302:ALA:O	1:B:309:ARG:NH1	2.46	0.49
1:B:83:ILE:CD1	1:B:107:LEU:HD21	2.43	0.48
1:D:99:SER:HB3	1:D:102:TYR:HD2	1.78	0.48
1:D:42:TYR:OH	1:D:66:GLU:OE2	2.18	0.48
1:C:277:ASP:HB3	1:C:280:ALA:HB3	1.95	0.48
1:A:370:THR:HG23	1:A:372:ALA:H	1.79	0.48
1:B:159:LYS:HD2	1:B:315:TYR:CZ	2.49	0.48
1:A:230:GLU:HG2	1:A:260:LYS:HD3	1.96	0.48
1:D:255:LYS:HB3	1:D:255:LYS:HE3	1.48	0.48
1:A:198:TYR:CE1	1:A:246:TYR:OH	2.67	0.47
1:C:40:HIS:CD2	1:C:350:PHE:HB3	2.49	0.47
1:C:210:ASN:O	1:C:214:LYS:HG3	2.14	0.47
1:D:250:LYS:HD3	1:D:251:GLY:N	2.29	0.47
1:C:228:ASN:HB3	1:C:231:ASP:HB2	1.97	0.47
1:D:40:HIS:CD2	1:D:350:PHE:HB3	2.50	0.47
1:B:348:GLU:OE1	1:B:353:THR:OG1	2.33	0.47
1:C:229:LEU:HB3	1:C:230:GLU:OE2	2.14	0.46
1:B:66:GLU:CG	1:B:90:LYS:HG3	2.45	0.46
1:D:159:LYS:HD2	1:D:315:TYR:CE1	2.50	0.46
1:A:272:ARG:HD3	1:A:272:ARG:HA	1.59	0.46
1:C:228:ASN:OD1	1:C:230:GLU:CG	2.64	0.46
1:B:231:ASP:O	1:B:235:GLN:HG3	2.16	0.46
1:C:117:VAL:HG11	1:C:338:TYR:HA	1.96	0.46
1:A:243:CYS:HB2	2:A:401:NAI:C5A	2.45	0.46
1:D:159:LYS:HD2	1:D:315:TYR:CE2	2.50	0.46
1:A:348:GLU:OE1	1:A:353:THR:OG1	2.33	0.46
1:A:230:GLU:HG3	1:A:260:LYS:HD3	1.97	0.46
1:A:97:VAL:HB	2:A:401:NAI:H5N	1.97	0.46

Continued on next page...

Continued from previous page...

Atom-1	Atom-2	Interatomic distance (Å)	Clash overlap (Å)
1:B:90:LYS:HD2	1:B:349:TYR:OH	2.16	0.46
1:A:304:LYS:HG2	1:C:150:GLY:O	2.15	0.45
1:D:98:GLY:HA3	1:D:272:ARG:HH12	1.82	0.45
1:B:159:LYS:HE2	1:B:159:LYS:HB3	1.65	0.45
1:A:125:VAL:HB	1:A:177:ILE:HD13	1.98	0.45
1:B:53:PHE:CE1	1:B:54:PRO:HB3	2.51	0.45
1:A:50:LYS:HD2	1:A:76:ALA:HA	1.99	0.45
1:C:173:GLY:HA2	2:C:401:NAI:H1B	1.98	0.45
1:A:231:ASP:O	1:A:235:GLN:HG3	2.17	0.45
1:B:8:MET:HG2	1:B:46:THR:HG23	1.98	0.45
1:D:277:ASP:HB3	1:D:280:ALA:HB3	1.98	0.45
1:B:81:GLU:H	1:B:81:GLU:CD	2.21	0.45
1:A:326:HIS:HE2	2:A:401:NAI:C7N	2.30	0.44
1:A:100:ASP:HB2	1:A:245:LEU:HD23	2.00	0.44
1:A:338:TYR:O	1:A:342:VAL:HG23	2.18	0.44
1:B:100:ASP:OD1	1:B:272[B]:ARG:HD3	2.18	0.44
1:D:133:MET:HG2	1:D:238:VAL:HG11	1.98	0.44
2:B:401:NAI:H51N	2:B:401:NAI:H6N	2.00	0.43
1:C:133:MET:HG2	1:C:238:VAL:HG11	1.98	0.43
1:C:244:PRO:HD3	2:C:401:NAI:H52A	2.00	0.43
1:D:35:LYS:HD3	1:D:39:GLU:OE1	2.18	0.43
1:B:308:TRP:HA	1:B:311:MET:HE2	1.99	0.43
1:A:303:PRO:O	1:A:306:MET:HB2	2.17	0.43
1:D:195:TYR:CZ	1:D:225:ARG:HB2	2.54	0.43
1:B:40:HIS:ND1	1:B:350:PHE:HB3	2.34	0.43
1:B:240:THR:HA	1:B:268:ILE:O	2.19	0.43
1:D:244:PRO:HD2	2:D:401:NAI:N3A	2.34	0.43
1:A:271:ALA:O	1:A:296:VAL:HG11	2.19	0.43
1:D:121:ASN:HD21	2:D:401:NAI:H5N	1.84	0.43
1:B:152:TRP:CD1	1:B:154:ILE:HD11	2.54	0.42
1:B:272[A]:ARG:NH1	1:B:297:TRP:O	2.52	0.42
1:D:102:TYR:HB3	1:D:107:LEU:HD11	2.01	0.42
1:C:98:GLY:N	1:C:116:GLU:OE2	2.43	0.42
1:C:170:ALA:O	1:C:239:VAL:HA	2.20	0.42
1:C:308:TRP:HA	1:C:311:MET:HE2	2.02	0.42
1:D:367:HIS:O	1:D:368:TYR:CD1	2.70	0.42
1:B:66:GLU:HG2	1:B:90:LYS:HG3	2.02	0.42
1:B:97:VAL:O	2:B:401:NAI:N7N	2.52	0.42
1:A:99:SER:HB3	1:A:102:TYR:HD2	1.85	0.42
1:A:228:ASN:OD1	1:A:231:ASP:OD1	2.38	0.42
1:B:145:ALA:O	1:B:149:GLN:HG2	2.20	0.42

Continued on next page...

Continued from previous page...

Atom-1	Atom-2	Interatomic distance (Å)	Clash overlap (Å)
1:C:107:LEU:HB3	1:C:112:ILE:HB	2.02	0.42
1:D:6:VAL:HG22	1:D:67:ILE:HB	2.01	0.42
1:A:92:CYS:HB3	1:A:102:TYR:CE1	2.54	0.41
1:C:272:ARG:HA	1:C:272:ARG:HD2	1.78	0.41
1:C:272:ARG:NH1	1:C:273:GLY:H	2.18	0.41
1:D:23:LEU:HD12	1:D:23:LEU:HA	1.89	0.41
1:A:295:ASP:OD2	1:A:328:SER:HB3	2.20	0.41
1:B:125:VAL:CG2	2:B:401:NAI:H42N	2.48	0.41
1:C:89:LEU:HD12	1:C:112:ILE:HG21	2.02	0.41
1:D:7:LEU:O	1:D:68:ILE:HA	2.20	0.41
1:D:214:LYS:HG2	1:D:220:ASP:HA	2.02	0.41
1:A:125:VAL:HG22	1:A:328:SER:OG	2.20	0.41
1:A:225:ARG:HH11	1:A:227:GLU:HG2	1.79	0.41
1:A:295:ASP:HA	1:A:324:THR:O	2.20	0.41
1:B:243:CYS:HB2	2:B:401:NAI:C5A	2.51	0.41
1:A:317:LYS:HB3	1:A:317:LYS:HE3	1.67	0.41
1:A:7:LEU:O	1:A:68:ILE:HA	2.21	0.40
1:C:50:LYS:HD2	1:C:76:ALA:HA	2.03	0.40
1:C:159:LYS:HE3	1:C:159:LYS:HB3	1.83	0.40
1:D:225:ARG:HE	1:D:227:GLU:HG2	1.86	0.40
1:A:116:GLU:OE1	1:A:362:ILE:HD11	2.20	0.40

All (2) symmetry-related close contacts are listed below. The label for Atom-2 includes the symmetry operator and encoded unit-cell translations to be applied.

Atom-1	Atom-2	Interatomic distance (Å)	Clash overlap (Å)
1:B:49:ASP:OD2	1:C:80:LYS:NZ[1_545]	1.95	0.25
4:A:511:HOH:O	4:D:501:HOH:O[1_556]	2.10	0.10

5.3 Torsion angles [i](#)

5.3.1 Protein backbone [i](#)

In the following table, the Percentiles column shows the percent Ramachandran outliers of the chain as a percentile score with respect to all X-ray entries followed by that with respect to entries of similar resolution.

The Analysed column shows the number of residues for which the backbone conformation was analysed, and the total number of residues.

Mol	Chain	Analysed	Favoured	Allowed	Outliers	Percentiles	
1	A	370/386 (96%)	356 (96%)	14 (4%)	0	100	100
1	B	372/386 (96%)	358 (96%)	14 (4%)	0	100	100
1	C	363/386 (94%)	349 (96%)	14 (4%)	0	100	100
1	D	361/386 (94%)	345 (96%)	14 (4%)	2 (1%)	25	37
All	All	1466/1544 (95%)	1408 (96%)	56 (4%)	2 (0%)	51	69

All (2) Ramachandran outliers are listed below:

Mol	Chain	Res	Type
1	D	52	PRO
1	D	256	GLU

5.3.2 Protein sidechains [i](#)

In the following table, the Percentiles column shows the percent sidechain outliers of the chain as a percentile score with respect to all X-ray entries followed by that with respect to entries of similar resolution.

The Analysed column shows the number of residues for which the sidechain conformation was analysed, and the total number of residues.

Mol	Chain	Analysed	Rotameric	Outliers	Percentiles	
1	A	307/320 (96%)	292 (95%)	15 (5%)	25	38
1	B	308/320 (96%)	292 (95%)	16 (5%)	23	36
1	C	303/320 (95%)	292 (96%)	11 (4%)	35	51
1	D	302/320 (94%)	291 (96%)	11 (4%)	35	51
All	All	1220/1280 (95%)	1167 (96%)	53 (4%)	29	44

All (53) residues with a non-rotameric sidechain are listed below:

Mol	Chain	Res	Type
1	A	12	SER
1	A	64	ASP
1	A	73	PHE
1	A	80	LYS
1	A	159	LYS
1	A	171	THR
1	A	198	TYR
1	A	225	ARG
1	A	234	SER

Continued on next page...

Continued from previous page...

Mol	Chain	Res	Type
1	A	253	PHE
1	A	272	ARG
1	A	306	MET
1	A	343	LYS
1	A	368	TYR
1	A	371	LYS
1	B	12	SER
1	B	15	LYS
1	B	50	LYS
1	B	64	ASP
1	B	85	LYS
1	B	100	ASP
1	B	115	LEU
1	B	204	GLU
1	B	213	SER
1	B	225	ARG
1	B	248	LYS
1	B	253	PHE
1	B	272[A]	ARG
1	B	272[B]	ARG
1	B	306	MET
1	B	325	VAL
1	C	35	LYS
1	C	73	PHE
1	C	100	ASP
1	C	197	ASP
1	C	253	PHE
1	C	255	LYS
1	C	305	ASP
1	C	306	MET
1	C	317	LYS
1	C	359	GLN
1	C	368	TYR
1	D	52	PRO
1	D	115	LEU
1	D	222	ILE
1	D	240	THR
1	D	253	PHE
1	D	254	ASN
1	D	255	LYS
1	D	306	MET
1	D	355	LYS

Continued on next page...

Continued from previous page...

Mol	Chain	Res	Type
1	D	359	GLN
1	D	368	TYR

Sometimes sidechains can be flipped to improve hydrogen bonding and reduce clashes. All (2) such sidechains are listed below:

Mol	Chain	Res	Type
1	A	228	ASN
1	B	105	ASN

5.3.3 RNA [i](#)

There are no RNA molecules in this entry.

5.4 Non-standard residues in protein, DNA, RNA chains [i](#)

There are no non-standard protein/DNA/RNA residues in this entry.

5.5 Carbohydrates [i](#)

There are no monosaccharides in this entry.

5.6 Ligand geometry [i](#)

Of 7 ligands modelled in this entry, 3 are monoatomic - leaving 4 for Mogul analysis.

In the following table, the Counts columns list the number of bonds (or angles) for which Mogul statistics could be retrieved, the number of bonds (or angles) that are observed in the model and the number of bonds (or angles) that are defined in the Chemical Component Dictionary. The Link column lists molecule types, if any, to which the group is linked. The Z score for a bond length (or angle) is the number of standard deviations the observed value is removed from the expected value. A bond length (or angle) with $|Z| > 2$ is considered an outlier worth inspection. RMSZ is the root-mean-square of all Z scores of the bond lengths (or angles).

Mol	Type	Chain	Res	Link	Bond lengths			Bond angles		
					Counts	RMSZ	$\# Z > 2$	Counts	RMSZ	$\# Z > 2$
2	NAI	C	401	-	24,27,48	0.39	0	30,41,73	0.54	0
2	NAI	B	401	-	42,48,48	0.49	0	47,73,73	0.75	2 (4%)
2	NAI	A	401	-	42,48,48	0.50	0	47,73,73	0.63	1 (2%)
2	NAI	D	401	-	42,48,48	0.51	0	47,73,73	0.74	1 (2%)

In the following table, the Chirals column lists the number of chiral outliers, the number of chiral centers analysed, the number of these observed in the model and the number defined in the Chemical Component Dictionary. Similar counts are reported in the Torsion and Rings columns. '-' means no outliers of that kind were identified.

Mol	Type	Chain	Res	Link	Chirals	Torsions	Rings
2	NAI	C	401	-	-	9/18/47/72	0/2/2/5
2	NAI	B	401	-	-	11/25/72/72	0/5/5/5
2	NAI	A	401	-	-	8/25/72/72	0/5/5/5
2	NAI	D	401	-	-	16/25/72/72	0/5/5/5

There are no bond length outliers.

All (4) bond angle outliers are listed below:

Mol	Chain	Res	Type	Atoms	Z	Observed(°)	Ideal(°)
2	B	401	NAI	C3N-C2N-N1N	-3.21	118.52	123.10
2	D	401	NAI	C5A-C6A-N6A	2.49	124.13	120.35
2	B	401	NAI	C5A-C6A-N6A	2.20	123.69	120.35
2	A	401	NAI	C5A-C6A-N6A	2.14	123.61	120.35

There are no chirality outliers.

All (44) torsion outliers are listed below:

Mol	Chain	Res	Type	Atoms
2	A	401	NAI	C5D-O5D-PN-O3
2	A	401	NAI	C5D-O5D-PN-O1N
2	B	401	NAI	C5B-O5B-PA-O1A
2	B	401	NAI	C2N-C3N-C7N-N7N
2	C	401	NAI	C5B-O5B-PA-O1A
2	C	401	NAI	C5B-O5B-PA-O2A
2	C	401	NAI	O4B-C4B-C5B-O5B
2	D	401	NAI	C5B-O5B-PA-O1A
2	D	401	NAI	C5B-O5B-PA-O2A
2	D	401	NAI	C5D-O5D-PN-O3
2	D	401	NAI	C5D-O5D-PN-O2N
2	B	401	NAI	O4D-C1D-N1N-C2N
2	A	401	NAI	O4D-C4D-C5D-O5D
2	A	401	NAI	C3D-C4D-C5D-O5D
2	C	401	NAI	C3B-C4B-C5B-O5B
2	D	401	NAI	O4B-C4B-C5B-O5B
2	D	401	NAI	C3B-C4B-C5B-O5B
2	D	401	NAI	O4D-C4D-C5D-O5D
2	D	401	NAI	C3D-C4D-C5D-O5D

Continued on next page...

Continued from previous page...

Mol	Chain	Res	Type	Atoms
2	D	401	NAI	C2D-C1D-N1N-C2N
2	D	401	NAI	C2D-C1D-N1N-C6N
2	A	401	NAI	O4B-C4B-C5B-O5B
2	B	401	NAI	O4D-C4D-C5D-O5D
2	A	401	NAI	C4B-C5B-O5B-PA
2	B	401	NAI	PN-O3-PA-O5B
2	C	401	NAI	PN-O3-PA-O5B
2	D	401	NAI	PN-O3-PA-O5B
2	D	401	NAI	O4D-C1D-N1N-C2N
2	B	401	NAI	C5B-O5B-PA-O3
2	C	401	NAI	C5B-O5B-PA-O3
2	D	401	NAI	C5B-O5B-PA-O3
2	C	401	NAI	C3D-C4D-C5D-O5D
2	C	401	NAI	PA-O3-PN-O2N
2	D	401	NAI	PA-O3-PN-O1N
2	D	401	NAI	O4D-C1D-N1N-C6N
2	B	401	NAI	C5B-O5B-PA-O2A
2	B	401	NAI	C5D-O5D-PN-O1N
2	B	401	NAI	C2D-C1D-N1N-C6N
2	A	401	NAI	O4D-C1D-N1N-C2N
2	A	401	NAI	C2D-C1D-N1N-C2N
2	B	401	NAI	O4B-C4B-C5B-O5B
2	C	401	NAI	O4D-C4D-C5D-O5D
2	B	401	NAI	C5D-O5D-PN-O3
2	D	401	NAI	PA-O3-PN-O2N

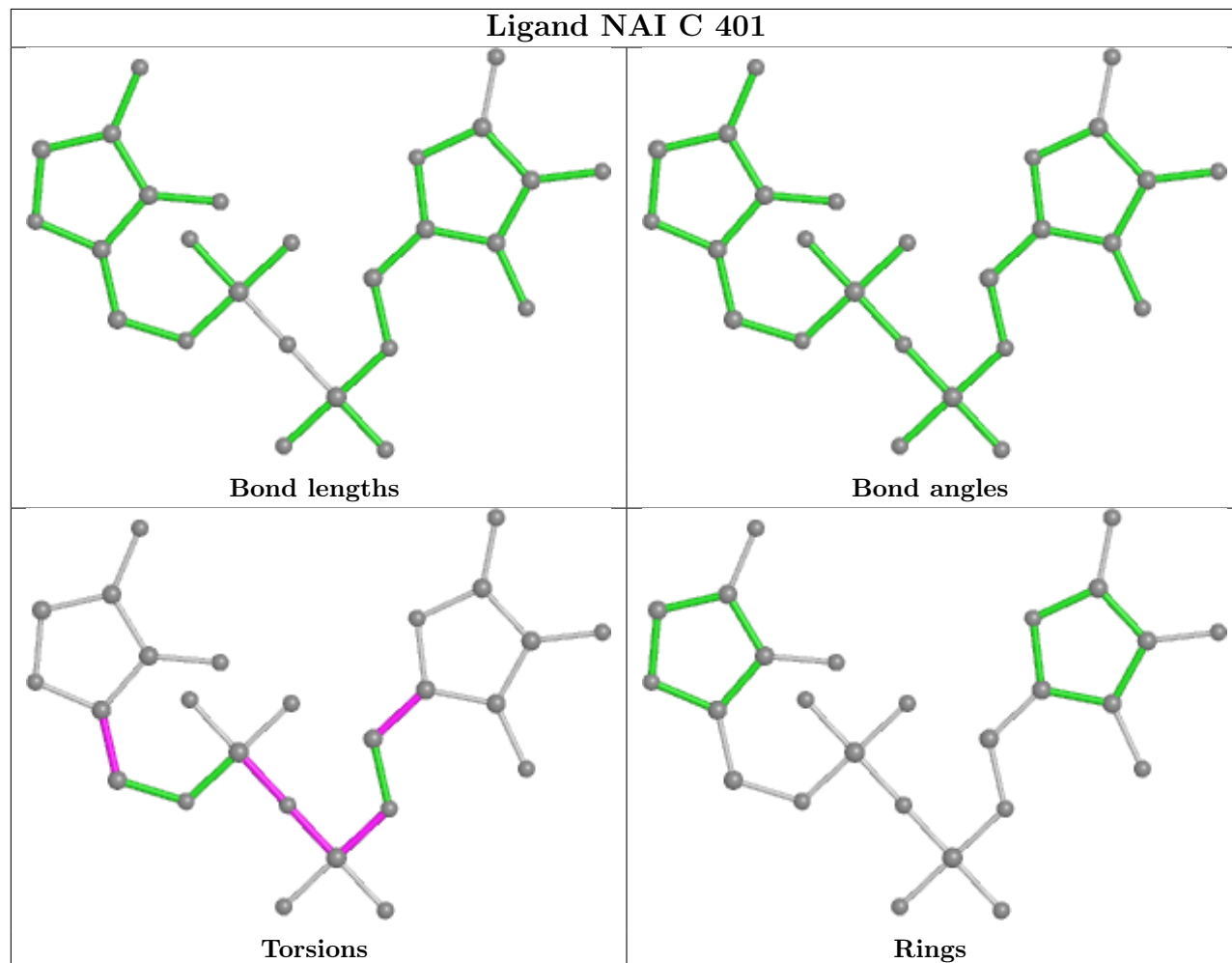
There are no ring outliers.

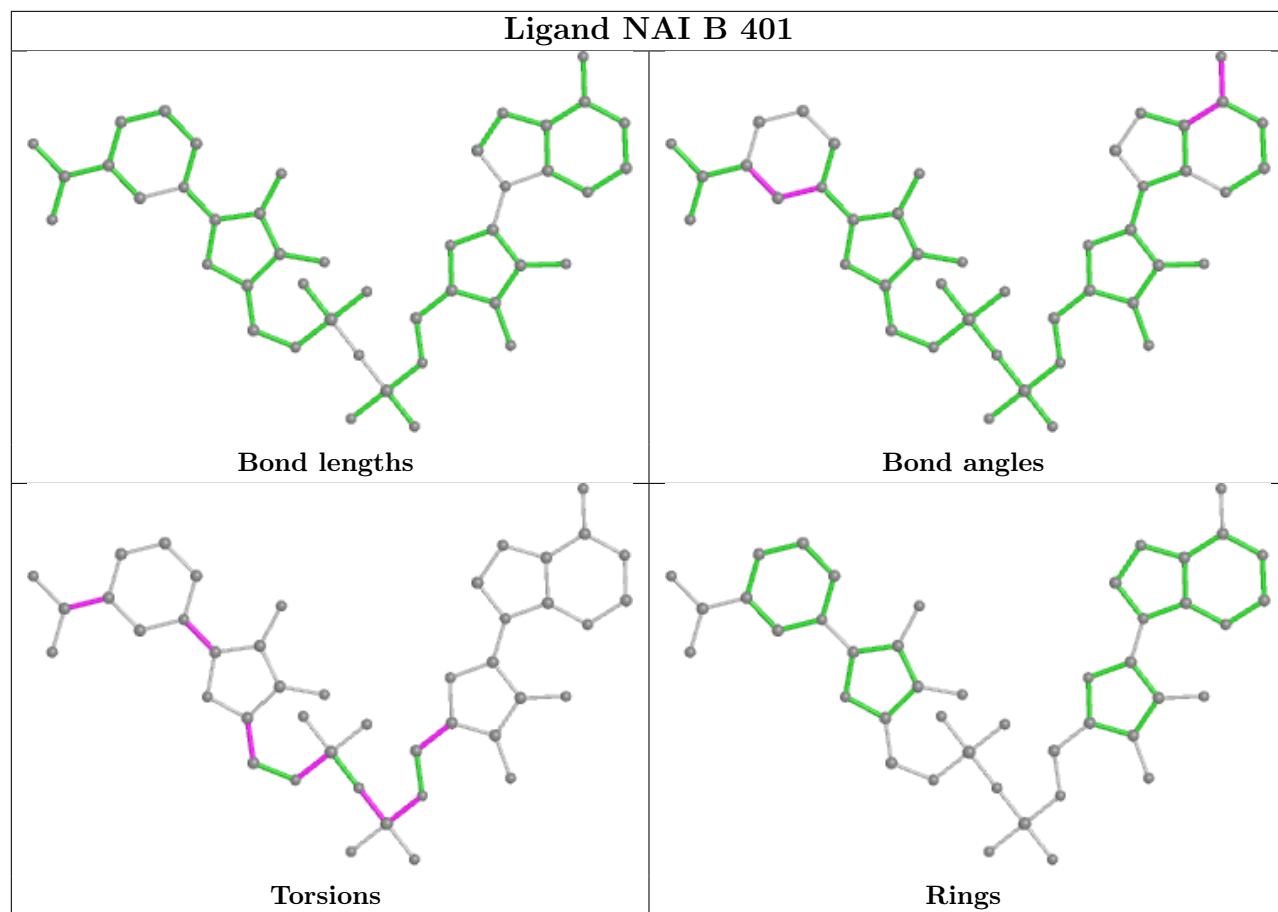
4 monomers are involved in 20 short contacts:

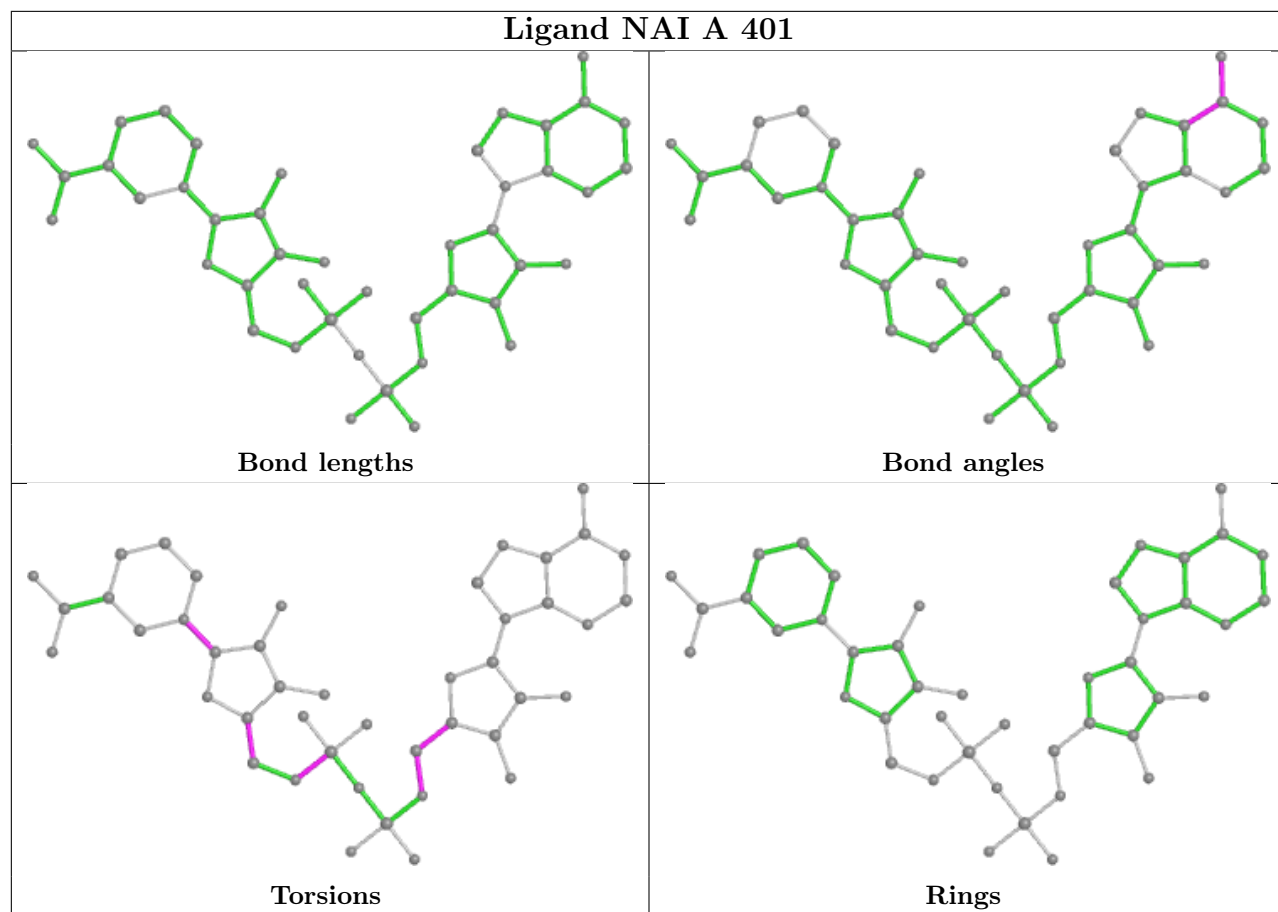
Mol	Chain	Res	Type	Clashes	Symm-Clashes
2	C	401	NAI	2	0
2	B	401	NAI	6	0
2	A	401	NAI	5	0
2	D	401	NAI	7	0

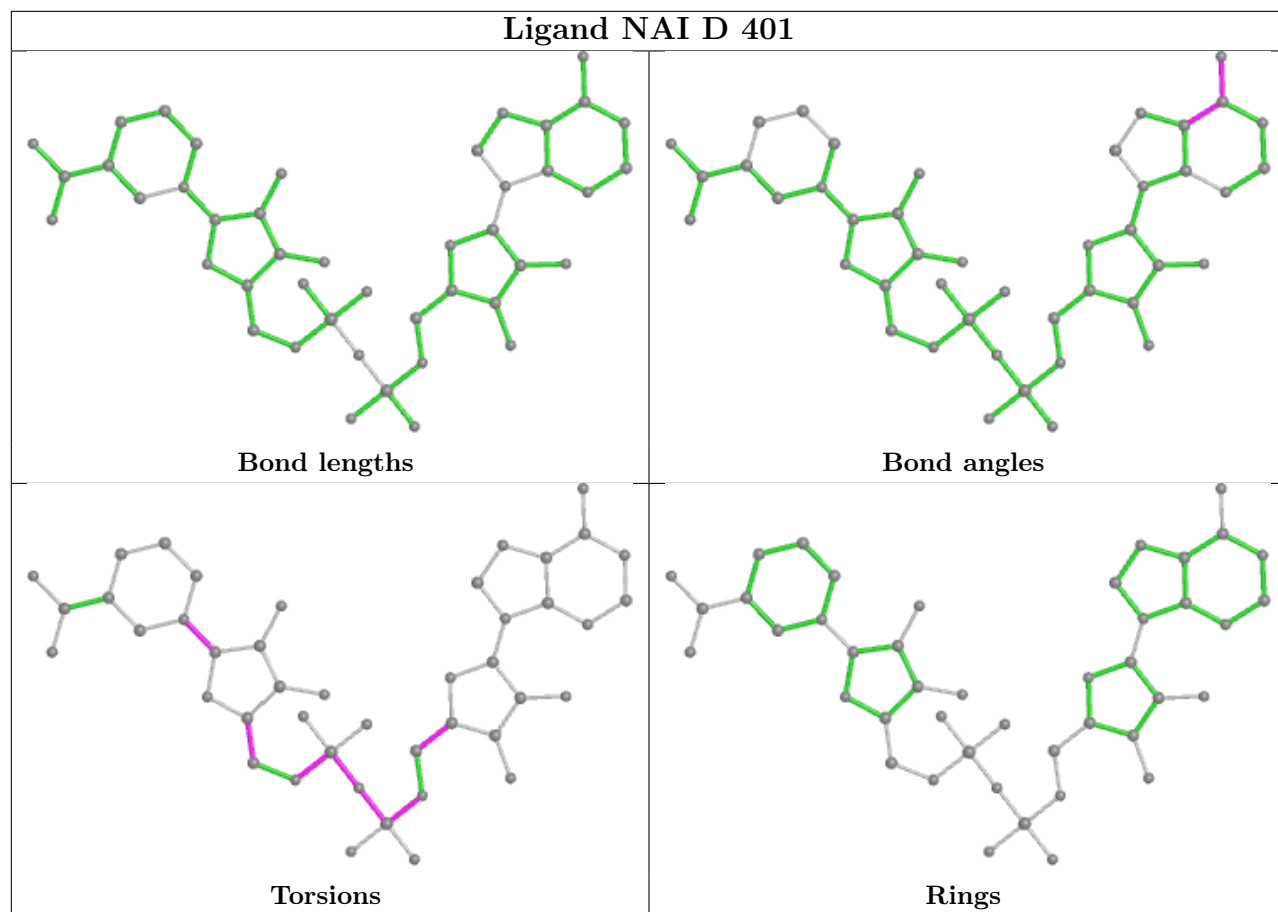
The following is a two-dimensional graphical depiction of Mogul quality analysis of bond lengths, bond angles, torsion angles, and ring geometry for all instances of the Ligand of Interest. In addition, ligands with molecular weight > 250 and outliers as shown on the validation Tables will also be included. For torsion angles, if less than 5% of the Mogul distribution of torsion angles is within 10 degrees of the torsion angle in question, then that torsion angle is considered an outlier. Any bond that is central to one or more torsion angles identified as an outlier by Mogul will be highlighted in the graph. For rings, the root-mean-square deviation (RMSD) between the ring

in question and similar rings identified by Mogul is calculated over all ring torsion angles. If the average RMSD is greater than 60 degrees and the minimal RMSD between the ring in question and any Mogul-identified rings is also greater than 60 degrees, then that ring is considered an outlier. The outliers are highlighted in purple. The color gray indicates Mogul did not find sufficient equivalents in the CSD to analyse the geometry.









5.7 Other polymers [i](#)

There are no such residues in this entry.

5.8 Polymer linkage issues [i](#)

There are no chain breaks in this entry.

6 Fit of model and data [i](#)

6.1 Protein, DNA and RNA chains [i](#)

In the following table, the column labelled ‘#RSRZ> 2’ contains the number (and percentage) of RSRZ outliers, followed by percent RSRZ outliers for the chain as percentile scores relative to all X-ray entries and entries of similar resolution. The OWAB column contains the minimum, median, 95th percentile and maximum values of the occupancy-weighted average B-factor per residue. The column labelled ‘Q< 0.9’ lists the number of (and percentage) of residues with an average occupancy less than 0.9.

Mol	Chain	Analysed	<RSRZ>	#RSRZ>2	OWAB(Å ²)	Q<0.9
1	A	372/386 (96%)	-0.40	6 (1%) 72 69	33, 45, 70, 108	0
1	B	373/386 (96%)	-0.39	6 (1%) 72 69	34, 46, 72, 109	0
1	C	367/386 (95%)	-0.36	3 (0%) 86 85	35, 49, 71, 105	0
1	D	365/386 (94%)	-0.40	2 (0%) 91 91	30, 48, 71, 103	0
All	All	1477/1544 (95%)	-0.39	17 (1%) 79 77	30, 47, 72, 109	0

All (17) RSRZ outliers are listed below:

Mol	Chain	Res	Type	RSRZ
1	A	372	ALA	7.5
1	B	372	ALA	7.0
1	C	367	HIS	4.7
1	A	373	TYR	3.7
1	A	368	TYR	3.6
1	B	373	TYR	3.4
1	C	364	ILE	3.1
1	B	370	THR	3.1
1	A	370	THR	2.9
1	B	374	GLY	2.7
1	B	368	TYR	2.7
1	C	368	TYR	2.7
1	D	368	TYR	2.6
1	A	203	GLU	2.5
1	B	364	ILE	2.4
1	A	249	SER	2.1
1	D	227	GLU	2.0

6.2 Non-standard residues in protein, DNA, RNA chains [i](#)

There are no non-standard protein/DNA/RNA residues in this entry.

6.3 Carbohydrates [i](#)

There are no monosaccharides in this entry.

6.4 Ligands [i](#)

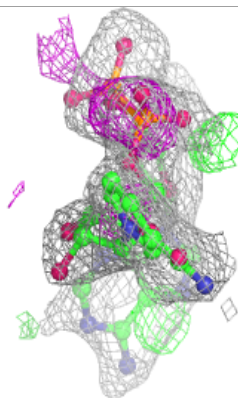
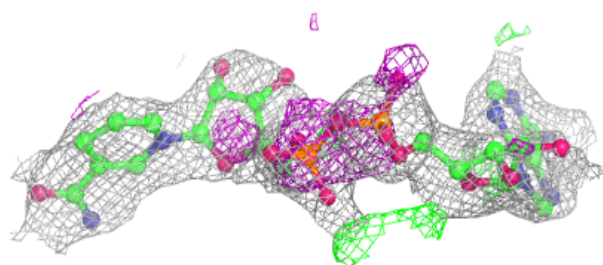
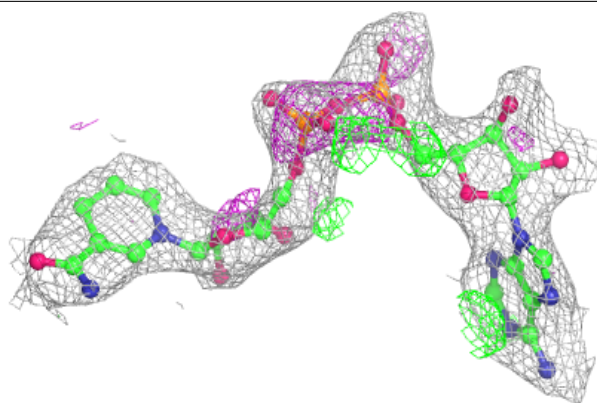
In the following table, the Atoms column lists the number of modelled atoms in the group and the number defined in the chemical component dictionary. The B-factors column lists the minimum, median, 95th percentile and maximum values of B factors of atoms in the group. The column labelled 'Q< 0.9' lists the number of atoms with occupancy less than 0.9.

Mol	Type	Chain	Res	Atoms	RSCC	RSR	B-factors(Å ²)	Q<0.9
2	NAI	D	401	44/44	0.85	0.22	47,70,80,83	0
2	NAI	A	401	44/44	0.88	0.29	41,72,83,101	0
2	NAI	C	401	26/44	0.89	0.31	61,70,75,80	0
2	NAI	B	401	44/44	0.90	0.29	49,68,76,79	0
3	MG	B	402	1/1	0.99	0.09	38,38,38,38	0
3	MG	C	402	1/1	0.99	0.06	39,39,39,39	0
3	MG	D	402	1/1	0.99	0.09	38,38,38,38	0

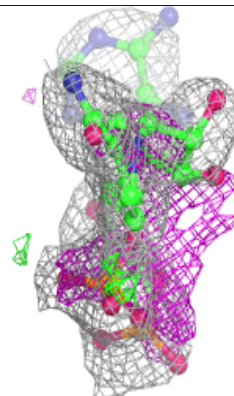
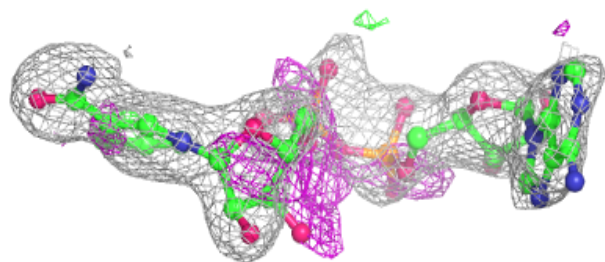
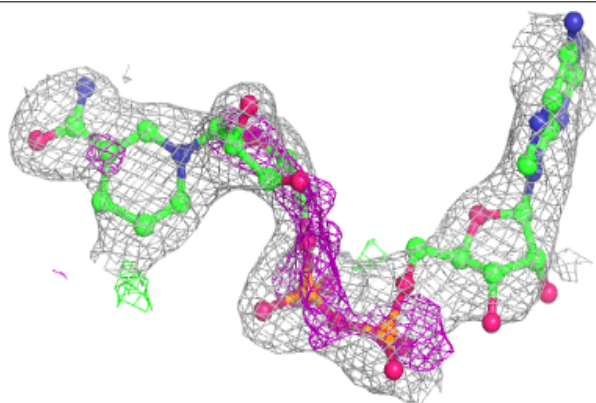
The following is a graphical depiction of the model fit to experimental electron density of all instances of the Ligand of Interest. In addition, ligands with molecular weight > 250 and outliers as shown on the geometry validation Tables will also be included. Each fit is shown from different orientation to approximate a three-dimensional view.

Electron density around NAI D 401:

$2mF_o-DF_c$ (at 0.7 rmsd) in gray
 mF_o-DF_c (at 3 rmsd) in purple (negative)
and green (positive)

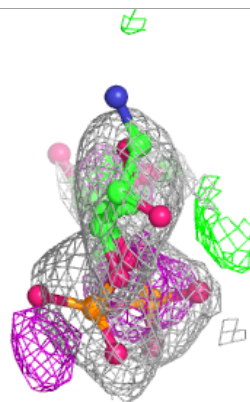
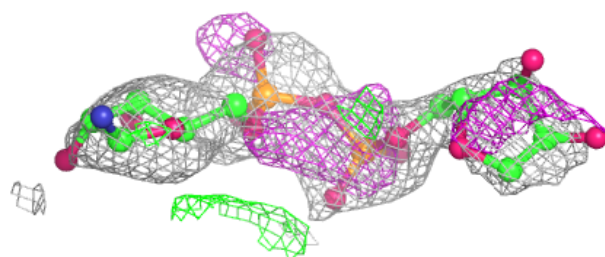
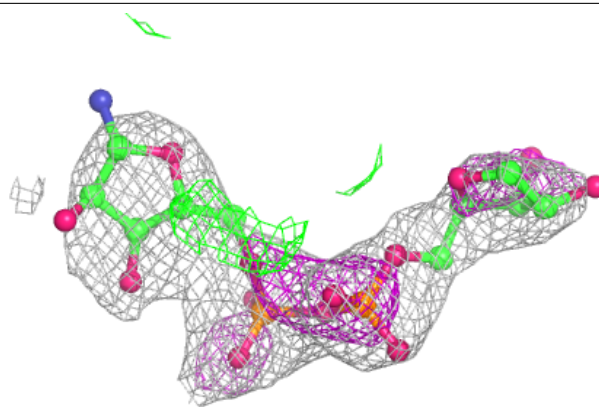
**Electron density around NAI A 401:**

$2mF_o-DF_c$ (at 0.7 rmsd) in gray
 mF_o-DF_c (at 3 rmsd) in purple (negative)
and green (positive)

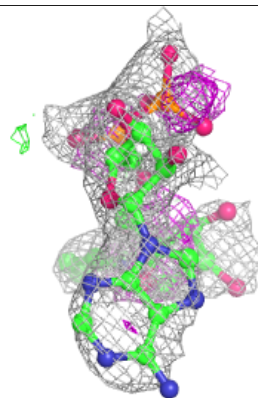
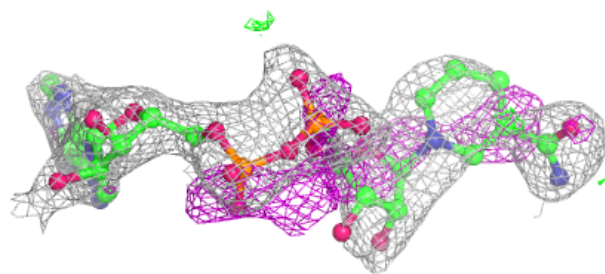
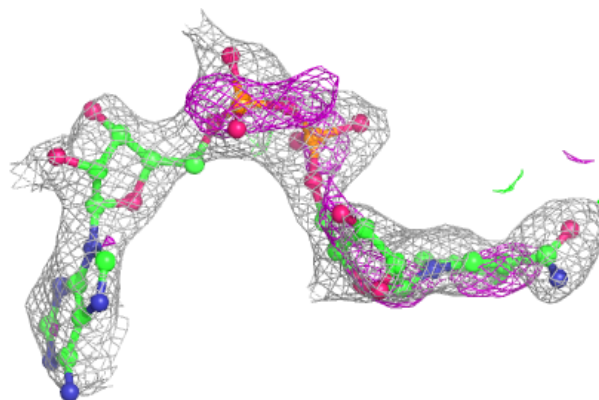


Electron density around NAI C 401:

$2mF_o-DF_c$ (at 0.7 rmsd) in gray
 mF_o-DF_c (at 3 rmsd) in purple (negative)
and green (positive)

**Electron density around NAI B 401:**

$2mF_o-DF_c$ (at 0.7 rmsd) in gray
 mF_o-DF_c (at 3 rmsd) in purple (negative)
and green (positive)



6.5 Other polymers [i](#)

There are no such residues in this entry.