



Full wwPDB X-ray Structure Validation Report ⓘ

Oct 30, 2023 – 10:07 AM JST

PDB ID : 8J3T
Title : Complex structure of human cytomegalovirus protease and a non-covalent small-molecule ligand
Authors : Yoshida, S.; Sako, Y.; Nikaido, E.; Ueda, T.; Kozono, I.; Ichihashi, Y.; Nakahashi, A.; Onishi, M.; Yamatsu, Y.; Kato, T.; Nishikawa, J.; Tachibana, Y.
Deposited on : 2023-04-18
Resolution : 2.90 Å(reported)

This is a Full wwPDB X-ray Structure Validation Report for a publicly released PDB entry.

We welcome your comments at validation@mail.wwpdb.org

A user guide is available at

<https://www.wwpdb.org/validation/2017/XrayValidationReportHelp>

with specific help available everywhere you see the ⓘ symbol.

The types of validation reports are described at

<http://www.wwpdb.org/validation/2017/FAQs#types>.

The following versions of software and data (see [references ⓘ](#)) were used in the production of this report:

MolProbity : 4.02b-467
Mogul : 1.8.5 (274361), CSD as541be (2020)
Xtriage (Phenix) : 1.13
EDS : 2.36
buster-report : 1.1.7 (2018)
Percentile statistics : 20191225.v01 (using entries in the PDB archive December 25th 2019)
Refmac : 5.8.0158
CCP4 : 7.0.044 (Gargrove)
Ideal geometry (proteins) : Engh & Huber (2001)
Ideal geometry (DNA, RNA) : Parkinson et al. (1996)
Validation Pipeline (wwPDB-VP) : 2.36

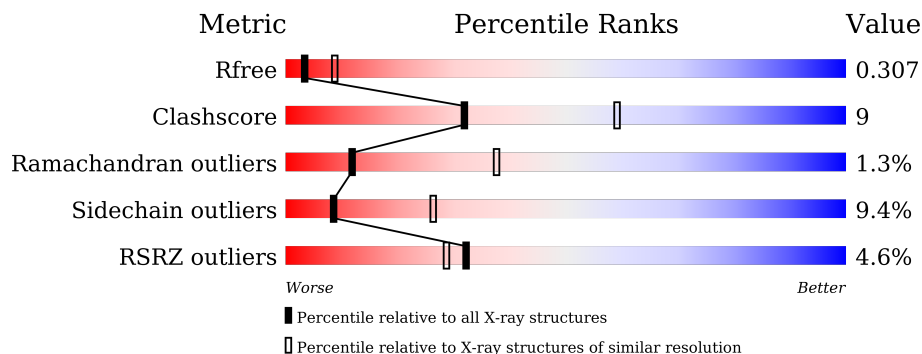
1 Overall quality at a glance

The following experimental techniques were used to determine the structure:

X-RAY DIFFRACTION

The reported resolution of this entry is 2.90 Å.

Percentile scores (ranging between 0-100) for global validation metrics of the entry are shown in the following graphic. The table shows the number of entries on which the scores are based.



Metric	Whole archive (#Entries)	Similar resolution (#Entries, resolution range(Å))
R_{free}	130704	1957 (2.90-2.90)
Clashscore	141614	2172 (2.90-2.90)
Ramachandran outliers	138981	2115 (2.90-2.90)
Sidechain outliers	138945	2117 (2.90-2.90)
RSRZ outliers	127900	1906 (2.90-2.90)

The table below summarises the geometric issues observed across the polymeric chains and their fit to the electron density. The red, orange, yellow and green segments of the lower bar indicate the fraction of residues that contain outliers for ≥ 3 , 2, 1 and 0 types of geometric quality criteria respectively. A grey segment represents the fraction of residues that are not modelled. The numeric value for each fraction is indicated below the corresponding segment, with a dot representing fractions $\leq 5\%$. The upper red bar (where present) indicates the fraction of residues that have poor fit to the electron density. The numeric value is given above the bar.

Mol	Chain	Length	Quality of chain
1	A	263	 3% 65% 13% • 19%
1	B	263	 5% 59% 14% • 24%

2 Entry composition i

There are 3 unique types of molecules in this entry. The entry contains 3185 atoms, of which 0 are hydrogens and 0 are deuteriums.

In the tables below, the ZeroOcc column contains the number of atoms modelled with zero occupancy, the AltConf column contains the number of residues with at least one atom in alternate conformation and the Trace column contains the number of residues modelled with at most 2 atoms.

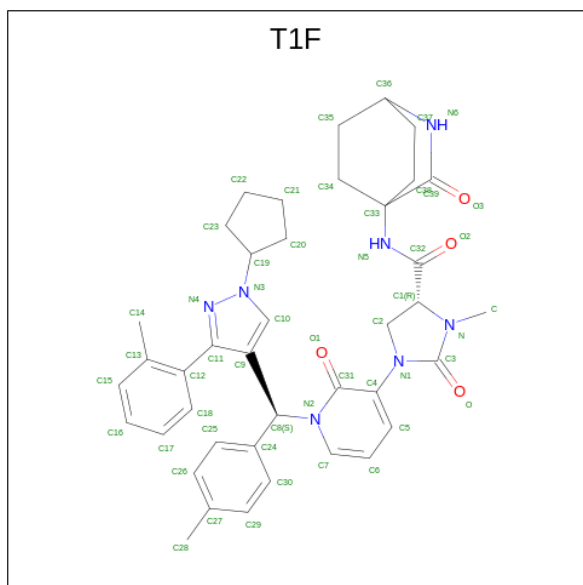
- Molecule 1 is a protein called Assemblin.

Mol	Chain	Residues	Atoms					ZeroOcc	AltConf	Trace
			Total	C	N	O	S			
1	A	213	1606	1016	287	299	4	0	0	0
1	B	201	1476	933	260	280	3	0	0	0

There are 16 discrepancies between the modelled and reference sequences:

Chain	Residue	Modelled	Actual	Comment	Reference
A	-6	MET	-	initiating methionine	UNP A0A0G2TMR2
A	-5	HIS	-	expression tag	UNP A0A0G2TMR2
A	-4	HIS	-	expression tag	UNP A0A0G2TMR2
A	-3	HIS	-	expression tag	UNP A0A0G2TMR2
A	-2	HIS	-	expression tag	UNP A0A0G2TMR2
A	-1	HIS	-	expression tag	UNP A0A0G2TMR2
A	0	HIS	-	expression tag	UNP A0A0G2TMR2
A	143	GLN	ALA	engineered mutation	UNP A0A0G2TMR2
B	-6	MET	-	initiating methionine	UNP A0A0G2TMR2
B	-5	HIS	-	expression tag	UNP A0A0G2TMR2
B	-4	HIS	-	expression tag	UNP A0A0G2TMR2
B	-3	HIS	-	expression tag	UNP A0A0G2TMR2
B	-2	HIS	-	expression tag	UNP A0A0G2TMR2
B	-1	HIS	-	expression tag	UNP A0A0G2TMR2
B	0	HIS	-	expression tag	UNP A0A0G2TMR2
B	143	GLN	ALA	engineered mutation	UNP A0A0G2TMR2

- Molecule 2 is (4R)-1-[1-[(S)-[1-cyclopentyl-3-(2-methylphenyl)pyrazol-4-yl]-(4-methylphenyl)methyl]-2-oxidanylidene-pyridin-3-yl]-3-methyl-2-oxidanylidene-N-(3-oxidanylidene-2-azabicyclo[2.2.2]octan-4-yl)imidazolidine-4-carboxamide (three-letter code: T1F) (formula: C₄₀H₄₅N₇O₄) (labeled as "Ligand of Interest" by depositor).



Mol	Chain	Residues	Atoms				ZeroOcc	AltConf
2	A	1	Total	C	N	O	0	0
			51	40	7	4		
2	B	1	Total	C	N	O	0	0
			51	40	7	4		

- Molecule 3 is water.

Mol	Chain	Residues	Atoms		ZeroOcc	AltConf
3	B	1	Total	O	0	0
			1	1		

4 Data and refinement statistics

Property	Value	Source
Space group	P 41 21 2	Depositor
Cell constants a, b, c, α , β , γ	76.36Å 76.36Å 215.03Å 90.00° 90.00° 90.00°	Depositor
Resolution (Å)	71.96 – 2.90 48.25 – 2.90	Depositor EDS
% Data completeness (in resolution range)	99.8 (71.96-2.90) 99.9 (48.25-2.90)	Depositor EDS
R_{merge}	0.12	Depositor
R_{sym}	(Not available)	Depositor
$\langle I/\sigma(I) \rangle$ ¹	3.73 (at 2.91Å)	Xtrriage
Refinement program	REFMAC 5.8.0218	Depositor
R, R_{free}	0.224 , 0.309 0.228 , 0.307	Depositor DCC
R_{free} test set	743 reflections (5.00%)	wwPDB-VP
Wilson B-factor (Å ²)	79.5	Xtrriage
Anisotropy	0.007	Xtrriage
Bulk solvent k_{sol} (e/Å ³), B_{sol} (Å ²)	0.30 , 47.5	EDS
L-test for twinning ²	$\langle L \rangle = 0.50$, $\langle L^2 \rangle = 0.33$	Xtrriage
Estimated twinning fraction	No twinning to report.	Xtrriage
F_o, F_c correlation	0.93	EDS
Total number of atoms	3185	wwPDB-VP
Average B, all atoms (Å ²)	80.0	wwPDB-VP

Xtrriage's analysis on translational NCS is as follows: *The largest off-origin peak in the Patterson function is 13.00% of the height of the origin peak. No significant pseudotranslation is detected.*

¹Intensities estimated from amplitudes.

²Theoretical values of $\langle |L| \rangle$, $\langle L^2 \rangle$ for acentric reflections are 0.5, 0.333 respectively for untwinned datasets, and 0.375, 0.2 for perfectly twinned datasets.

5 Model quality [i](#)

5.1 Standard geometry [i](#)

Bond lengths and bond angles in the following residue types are not validated in this section: T1F

The Z score for a bond length (or angle) is the number of standard deviations the observed value is removed from the expected value. A bond length (or angle) with $|Z| > 5$ is considered an outlier worth inspection. RMSZ is the root-mean-square of all Z scores of the bond lengths (or angles).

Mol	Chain	Bond lengths		Bond angles	
		RMSZ	# Z >5	RMSZ	# Z >5
1	A	0.54	0/1640	0.76	1/2230 (0.0%)
1	B	0.57	0/1505	0.76	0/2049
All	All	0.56	0/3145	0.76	1/4279 (0.0%)

Chiral center outliers are detected by calculating the chiral volume of a chiral center and verifying if the center is modelled as a planar moiety or with the opposite hand. A planarity outlier is detected by checking planarity of atoms in a peptide group, atoms in a mainchain group or atoms of a sidechain that are expected to be planar.

Mol	Chain	#Chirality outliers	#Planarity outliers
1	A	0	1

There are no bond length outliers.

All (1) bond angle outliers are listed below:

Mol	Chain	Res	Type	Atoms	Z	Observed($^{\circ}$)	Ideal($^{\circ}$)
1	A	163	VAL	CB-CA-C	-5.80	100.38	111.40

There are no chirality outliers.

All (1) planarity outliers are listed below:

Mol	Chain	Res	Type	Group
1	A	199	TRP	Peptide

5.2 Too-close contacts [i](#)

In the following table, the Non-H and H(model) columns list the number of non-hydrogen atoms and hydrogen atoms in the chain respectively. The H(added) column lists the number of hydrogen atoms added and optimized by MolProbity. The Clashes column lists the number of clashes within

the asymmetric unit, whereas Symm-Clashes lists symmetry-related clashes.

Mol	Chain	Non-H	H(model)	H(added)	Clashes	Symm-Clashes
1	A	1606	0	1529	29	0
1	B	1476	0	1373	28	0
2	A	51	0	0	0	0
2	B	51	0	0	4	0
3	B	1	0	0	0	0
All	All	3185	0	2902	54	0

The all-atom clashscore is defined as the number of clashes found per 1000 atoms (including hydrogen atoms). The all-atom clashscore for this structure is 9.

All (54) close contacts within the same asymmetric unit are listed below, sorted by their clash magnitude.

Atom-1	Atom-2	Interatomic distance (Å)	Clash overlap (Å)
1:B:113:SER:CB	1:B:114:PRO:CD	2.54	0.86
1:B:113:SER:CB	1:B:114:PRO:HD3	2.06	0.85
1:A:113:SER:CB	1:A:114:PRO:CD	2.53	0.85
1:A:113:SER:CB	1:A:114:PRO:HD3	2.17	0.73
1:B:188:THR:OG1	1:B:191:ASP:OD1	2.07	0.73
1:B:167:ARG:HA	1:B:167:ARG:NE	2.07	0.70
1:B:132:SER:HB3	2:B:601:T1F:O	1.96	0.65
1:A:167:ARG:CZ	1:A:237:LYS:HG2	2.29	0.63
1:B:92:ARG:NH2	1:B:214:PHE:O	2.29	0.62
1:B:59:LEU:HA	1:B:158:VAL:O	2.06	0.55
1:B:182:GLN:NE2	1:B:192:ARG:CZ	2.69	0.55
1:A:233:GLU:O	1:A:237:LYS:HB2	2.07	0.55
1:A:109:ARG:HH11	1:A:109:ARG:HG3	1.73	0.54
1:A:167:ARG:NE	1:A:237:LYS:HG2	2.24	0.53
1:A:167:ARG:CZ	1:A:167:ARG:HA	2.39	0.53
1:A:176:ASP:O	1:A:180:VAL:HG13	2.08	0.52
1:B:132:SER:CB	2:B:601:T1F:O	2.57	0.52
1:A:176:ASP:OD1	1:A:176:ASP:C	2.49	0.51
1:A:232:ARG:HH21	1:B:239:ARG:NE	2.08	0.50
1:B:182:GLN:HE22	1:B:192:ARG:CZ	2.25	0.50
1:A:176:ASP:OD1	1:A:178:GLU:N	2.45	0.49
1:A:235:LEU:HD11	1:B:230:TYR:HA	1.93	0.49
1:A:108:SER:O	1:A:109:ARG:C	2.51	0.48
1:A:105:GLU:OE2	1:A:109:ARG:NH1	2.46	0.48
1:A:168:GLY:N	1:A:241:ASP:OD1	2.27	0.47
1:A:226:VAL:HG11	1:B:127:SER:OG	2.13	0.47
1:B:228:ALA:HA	1:B:231:ILE:HD12	1.96	0.47

Continued on next page...

Continued from previous page...

Atom-1	Atom-2	Interatomic distance (Å)	Clash overlap (Å)
1:B:247:VAL:O	1:B:247:VAL:HG12	2.14	0.47
1:A:163:VAL:HG13	1:A:238:LEU:HD13	1.97	0.46
1:A:212:ASP:OD1	1:A:212:ASP:C	2.53	0.46
1:A:246:GLY:O	1:A:248:THR:N	2.49	0.46
1:B:96:ILE:HG21	1:B:221:LEU:HD12	1.98	0.45
1:B:115:LEU:HD22	1:B:253:TYR:CZ	2.52	0.45
1:B:225:SER:O	1:B:228:ALA:HB3	2.16	0.44
1:A:235:LEU:HD23	1:A:235:LEU:HA	1.82	0.44
1:A:242:LYS:NZ	1:A:256:ALA:OXT	2.47	0.44
1:B:62:ASN:ND2	2:B:601:T1F:C14	2.81	0.44
1:A:183:ARG:HD2	1:A:183:ARG:N	2.32	0.44
1:A:113:SER:CB	1:A:114:PRO:HD2	2.41	0.44
1:A:59:LEU:HD22	1:A:160:LEU:HG	1.99	0.44
1:B:167:ARG:NE	1:B:167:ARG:CA	2.78	0.44
1:B:242:LYS:C	1:B:244:LEU:H	2.21	0.44
1:A:185:PRO:HG2	1:A:246:GLY:HA3	2.00	0.43
1:A:180:VAL:O	1:A:183:ARG:HB2	2.19	0.43
1:B:191:ASP:OD1	1:B:191:ASP:N	2.53	0.42
1:B:235:LEU:HD12	1:B:235:LEU:HA	1.94	0.42
1:B:167:ARG:HA	1:B:167:ARG:CZ	2.49	0.42
1:B:184:PHE:HD2	1:B:245:VAL:CG1	2.33	0.42
1:A:20:LEU:HD23	1:A:20:LEU:HA	1.90	0.41
1:B:72:VAL:HG23	1:B:158:VAL:HG21	2.02	0.41
1:B:69:VAL:HG12	1:B:93:PHE:CG	2.56	0.41
1:A:23:TYR:CD2	1:A:81:GLY:HA2	2.55	0.41
1:B:63:HIS:NE2	2:B:601:T1F:O	2.38	0.41
1:A:196:ARG:HA	1:A:199:TRP:NE1	2.37	0.40

There are no symmetry-related clashes.

5.3 Torsion angles

5.3.1 Protein backbone

In the following table, the Percentiles column shows the percent Ramachandran outliers of the chain as a percentile score with respect to all X-ray entries followed by that with respect to entries of similar resolution.

The Analysed column shows the number of residues for which the backbone conformation was analysed, and the total number of residues.

Mol	Chain	Analysed	Favoured	Allowed	Outliers	Percentiles	
1	A	205/263 (78%)	185 (90%)	18 (9%)	2 (1%)	15	45
1	B	191/263 (73%)	163 (85%)	25 (13%)	3 (2%)	9	32
All	All	396/526 (75%)	348 (88%)	43 (11%)	5 (1%)	12	37

All (5) Ramachandran outliers are listed below:

Mol	Chain	Res	Type
1	A	113	SER
1	B	113	SER
1	B	79	ARG
1	B	108	SER
1	A	247	VAL

5.3.2 Protein sidechains [i](#)

In the following table, the Percentiles column shows the percent sidechain outliers of the chain as a percentile score with respect to all X-ray entries followed by that with respect to entries of similar resolution.

The Analysed column shows the number of residues for which the sidechain conformation was analysed, and the total number of residues.

Mol	Chain	Analysed	Rotameric	Outliers	Percentiles	
1	A	162/223 (73%)	149 (92%)	13 (8%)	12	33
1	B	146/223 (66%)	130 (89%)	16 (11%)	6	19
All	All	308/446 (69%)	279 (91%)	29 (9%)	8	26

All (29) residues with a non-rotameric sidechain are listed below:

Mol	Chain	Res	Type
1	A	33	LEU
1	A	59	LEU
1	A	66	THR
1	A	75	MET
1	A	84	CYS
1	A	131	LEU
1	A	180	VAL
1	A	183	ARG
1	A	185	PRO
1	A	222	LEU
1	A	224	ASN

Continued on next page...

Continued from previous page...

Mol	Chain	Res	Type
1	A	238	LEU
1	A	252	SER
1	B	26	SER
1	B	59	LEU
1	B	65	ASP
1	B	66	THR
1	B	72	VAL
1	B	103	LYS
1	B	131	LEU
1	B	157	HIS
1	B	167	ARG
1	B	183	ARG
1	B	191	ASP
1	B	222	LEU
1	B	225	SER
1	B	235	LEU
1	B	238	LEU
1	B	248	THR

Sometimes sidechains can be flipped to improve hydrogen bonding and reduce clashes. All (7) such sidechains are listed below:

Mol	Chain	Res	Type
1	A	62	ASN
1	A	224	ASN
1	B	25	GLN
1	B	62	ASN
1	B	71	HIS
1	B	76	GLN
1	B	182	GLN

5.3.3 RNA [i](#)

There are no RNA molecules in this entry.

5.4 Non-standard residues in protein, DNA, RNA chains [i](#)

There are no non-standard protein/DNA/RNA residues in this entry.

5.5 Carbohydrates [i](#)

There are no monosaccharides in this entry.

5.6 Ligand geometry [i](#)

2 ligands are modelled in this entry.

In the following table, the Counts columns list the number of bonds (or angles) for which Mogul statistics could be retrieved, the number of bonds (or angles) that are observed in the model and the number of bonds (or angles) that are defined in the Chemical Component Dictionary. The Link column lists molecule types, if any, to which the group is linked. The Z score for a bond length (or angle) is the number of standard deviations the observed value is removed from the expected value. A bond length (or angle) with $|Z| > 2$ is considered an outlier worth inspection. RMSZ is the root-mean-square of all Z scores of the bond lengths (or angles).

Mol	Type	Chain	Res	Link	Bond lengths			Bond angles		
					Counts	RMSZ	# Z > 2	Counts	RMSZ	# Z > 2
2	T1F	B	601	-	55,58,58	1.58	5 (9%)	66,87,87	2.73	18 (27%)
2	T1F	A	601	-	55,58,58	1.51	10 (18%)	66,87,87	2.43	12 (18%)

In the following table, the Chirals column lists the number of chiral outliers, the number of chiral centers analysed, the number of these observed in the model and the number defined in the Chemical Component Dictionary. Similar counts are reported in the Torsion and Rings columns. '-' means no outliers of that kind were identified.

Mol	Type	Chain	Res	Link	Chirals	Torsions	Rings
2	T1F	B	601	-	-	7/23/78/78	0/9/8/8
2	T1F	A	601	-	-	5/23/78/78	0/9/8/8

All (15) bond length outliers are listed below:

Mol	Chain	Res	Type	Atoms	Z	Observed(Å)	Ideal(Å)
2	B	601	T1F	C11-C9	7.62	1.49	1.40
2	A	601	T1F	C11-C9	6.39	1.48	1.40
2	B	601	T1F	C3-N1	-3.99	1.31	1.39
2	B	601	T1F	C12-C13	3.90	1.47	1.40
2	A	601	T1F	C12-C11	-3.64	1.45	1.49
2	B	601	T1F	C3-N	-3.29	1.31	1.36
2	A	601	T1F	C12-C13	3.26	1.46	1.40
2	A	601	T1F	C3-N1	-2.94	1.33	1.39
2	B	601	T1F	C24-C8	-2.77	1.49	1.52
2	A	601	T1F	C36-N6	-2.56	1.44	1.47

Continued on next page...

Continued from previous page...

Mol	Chain	Res	Type	Atoms	Z	Observed(Å)	Ideal(Å)
2	A	601	T1F	C3-N	-2.39	1.33	1.36
2	A	601	T1F	C11-N4	-2.36	1.33	1.35
2	A	601	T1F	C7-C6	2.21	1.40	1.35
2	A	601	T1F	C2-N1	-2.13	1.44	1.47
2	A	601	T1F	C31-N2	2.10	1.42	1.38

All (30) bond angle outliers are listed below:

Mol	Chain	Res	Type	Atoms	Z	Observed(°)	Ideal(°)
2	A	601	T1F	C10-N3-C19	13.64	137.56	125.48
2	B	601	T1F	C10-N3-C19	12.05	136.16	125.48
2	B	601	T1F	C33-C39-N6	-7.82	111.33	118.54
2	B	601	T1F	O3-C39-C33	6.81	125.43	119.15
2	B	601	T1F	C1-N-C3	-6.56	105.07	112.04
2	B	601	T1F	C1-C2-N1	-5.64	98.21	102.51
2	A	601	T1F	C33-C39-N6	-5.60	113.38	118.54
2	A	601	T1F	C2-N1-C3	5.24	116.00	111.47
2	B	601	T1F	C10-N3-N4	4.58	114.44	111.70
2	B	601	T1F	C23-C19-N3	4.26	118.58	113.44
2	A	601	T1F	C7-N2-C31	-4.26	119.08	122.24
2	A	601	T1F	O3-C39-C33	4.23	123.05	119.15
2	B	601	T1F	C-N-C3	3.81	129.06	121.96
2	A	601	T1F	C10-N3-N4	3.80	113.97	111.70
2	B	601	T1F	C33-N5-C32	3.69	128.37	122.13
2	A	601	T1F	O1-C31-C4	-3.64	117.31	122.45
2	B	601	T1F	C24-C8-C9	3.62	121.44	112.48
2	B	601	T1F	C38-C33-N5	2.80	114.92	109.59
2	A	601	T1F	C4-C31-N2	2.66	119.48	115.49
2	B	601	T1F	O2-C32-N5	2.62	128.74	123.14
2	A	601	T1F	C-N-C3	2.62	126.85	121.96
2	A	601	T1F	C9-C10-N3	-2.59	104.47	107.59
2	A	601	T1F	C24-C8-C9	2.57	118.84	112.48
2	B	601	T1F	C9-C10-N3	-2.52	104.55	107.59
2	B	601	T1F	C32-C1-N	2.39	118.61	112.62
2	B	601	T1F	C4-C31-N2	2.31	118.96	115.49
2	A	601	T1F	C1-C2-N1	-2.26	100.79	102.51
2	B	601	T1F	C2-C1-C32	2.24	115.27	110.56
2	B	601	T1F	C22-C23-C19	-2.08	99.72	104.32
2	B	601	T1F	C35-C36-C37	-2.01	107.34	110.82

There are no chirality outliers.

All (12) torsion outliers are listed below:

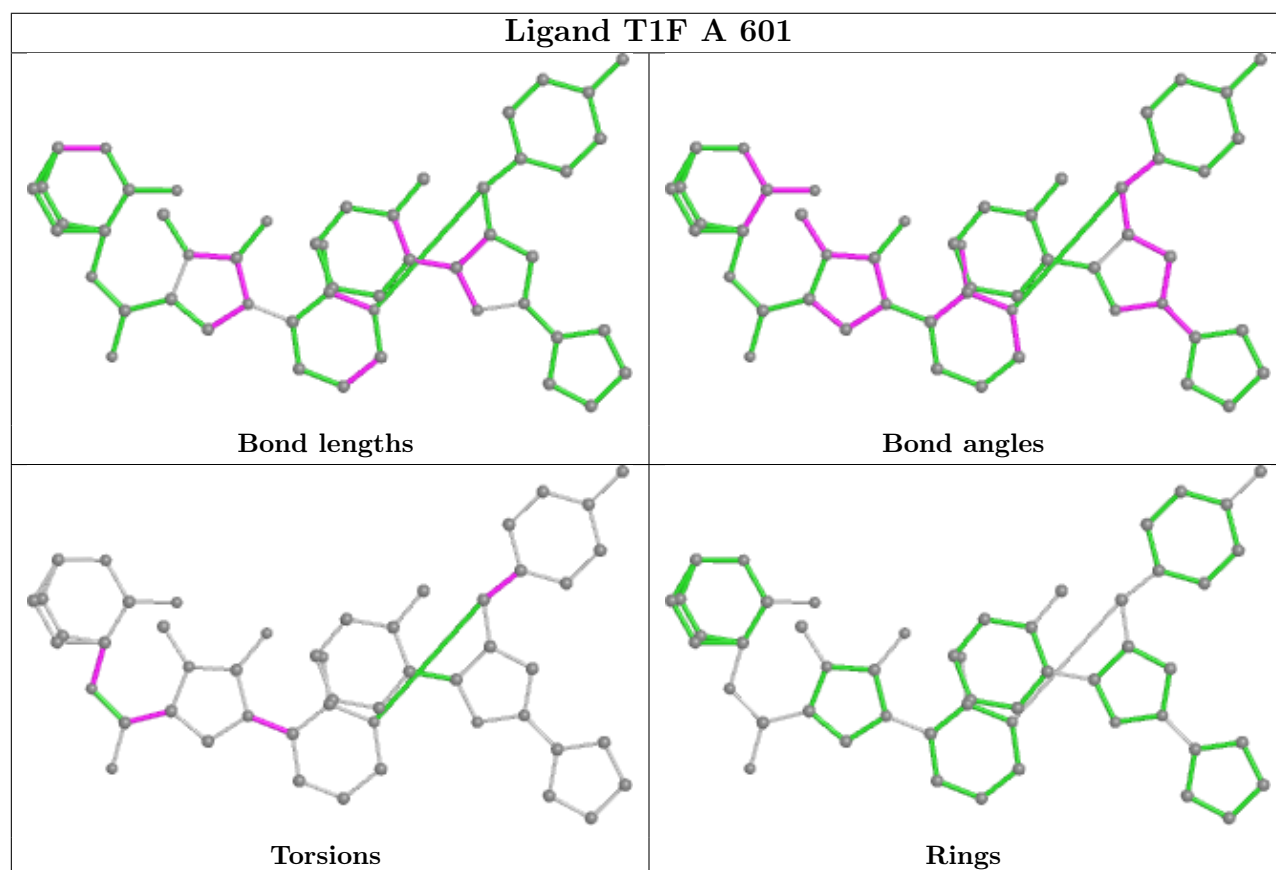
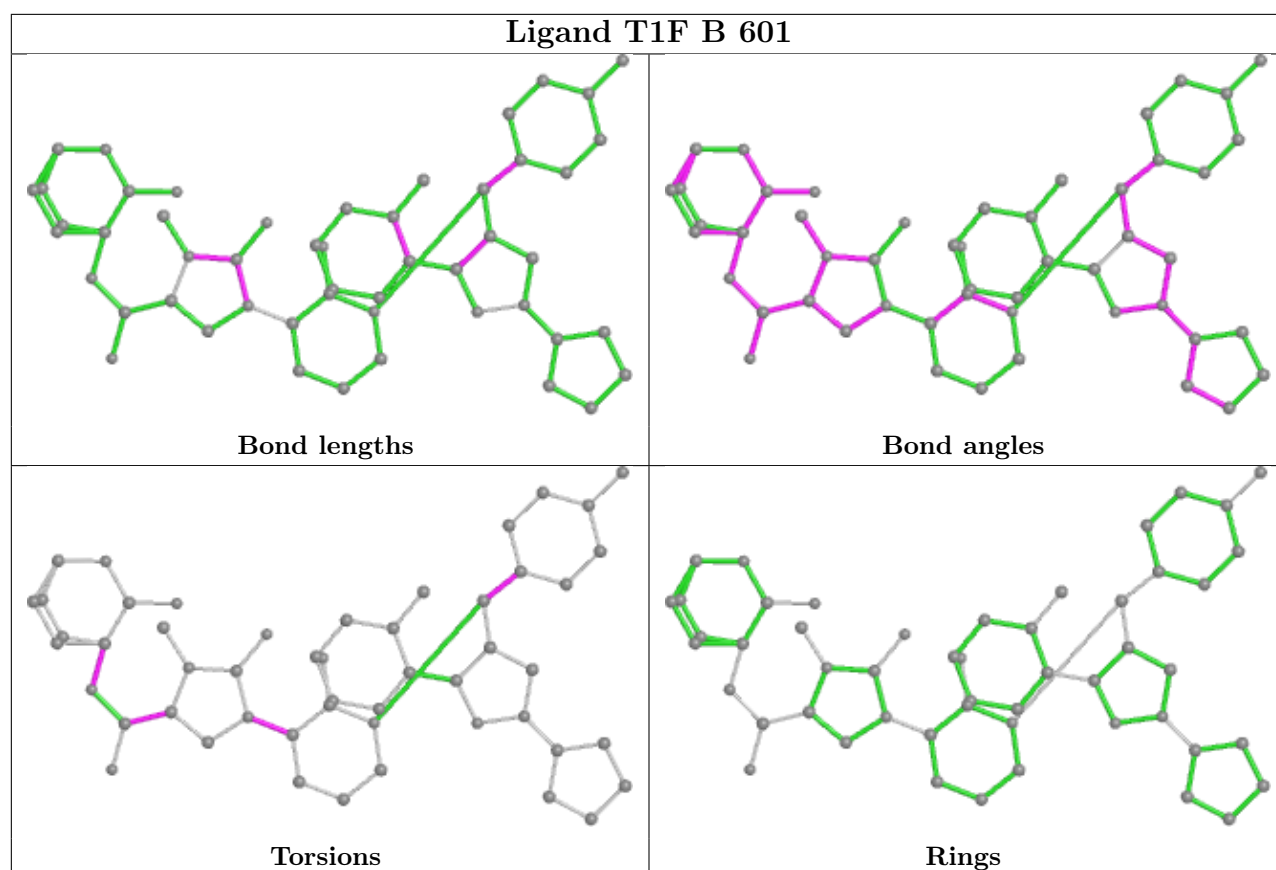
Mol	Chain	Res	Type	Atoms
2	A	601	T1F	C5-C4-N1-C2
2	B	601	T1F	C5-C4-N1-C3
2	B	601	T1F	N-C1-C32-N5
2	B	601	T1F	N-C1-C32-O2
2	A	601	T1F	C39-C33-N5-C32
2	B	601	T1F	C39-C33-N5-C32
2	A	601	T1F	N-C1-C32-N5
2	B	601	T1F	C2-C1-C32-N5
2	A	601	T1F	N-C1-C32-O2
2	B	601	T1F	C25-C24-C8-N2
2	A	601	T1F	C25-C24-C8-N2
2	B	601	T1F	C2-C1-C32-O2

There are no ring outliers.

1 monomer is involved in 4 short contacts:

Mol	Chain	Res	Type	Clashes	Symm-Clashes
2	B	601	T1F	4	0

The following is a two-dimensional graphical depiction of Mogul quality analysis of bond lengths, bond angles, torsion angles, and ring geometry for all instances of the Ligand of Interest. In addition, ligands with molecular weight > 250 and outliers as shown on the validation Tables will also be included. For torsion angles, if less than 5% of the Mogul distribution of torsion angles is within 10 degrees of the torsion angle in question, then that torsion angle is considered an outlier. Any bond that is central to one or more torsion angles identified as an outlier by Mogul will be highlighted in the graph. For rings, the root-mean-square deviation (RMSD) between the ring in question and similar rings identified by Mogul is calculated over all ring torsion angles. If the average RMSD is greater than 60 degrees and the minimal RMSD between the ring in question and any Mogul-identified rings is also greater than 60 degrees, then that ring is considered an outlier. The outliers are highlighted in purple. The color gray indicates Mogul did not find sufficient equivalents in the CSD to analyse the geometry.



5.7 Other polymers [i](#)

There are no such residues in this entry.

5.8 Polymer linkage issues [i](#)

There are no chain breaks in this entry.

6 Fit of model and data [i](#)

6.1 Protein, DNA and RNA chains [i](#)

In the following table, the column labelled ‘#RSRZ > 2’ contains the number (and percentage) of RSRZ outliers, followed by percent RSRZ outliers for the chain as percentile scores relative to all X-ray entries and entries of similar resolution. The OWAB column contains the minimum, median, 95th percentile and maximum values of the occupancy-weighted average B-factor per residue. The column labelled ‘Q < 0.9’ lists the number of (and percentage) of residues with an average occupancy less than 0.9.

Mol	Chain	Analysed	<RSRZ>	#RSRZ>2	OWAB(Å ²)	Q<0.9
1	A	213/263 (80%)	0.07	7 (3%) 46 41	50, 73, 114, 136	0
1	B	201/263 (76%)	0.22	12 (5%) 21 18	52, 84, 124, 141	0
All	All	414/526 (78%)	0.14	19 (4%) 32 29	50, 78, 120, 141	0

All (19) RSRZ outliers are listed below:

Mol	Chain	Res	Type	RSRZ
1	B	20	LEU	4.3
1	A	155	PHE	3.8
1	B	19	PHE	3.8
1	B	82	LEU	3.7
1	A	42	TRP	3.4
1	B	155	PHE	3.2
1	B	22	ARG	3.1
1	A	39	VAL	3.1
1	B	21	ALA	3.1
1	B	23	TYR	3.1
1	B	250	ARG	2.7
1	B	168	GLY	2.6
1	B	249	GLU	2.5
1	A	40	GLU	2.4
1	A	41	HIS	2.4
1	B	195	LEU	2.3
1	A	154	PRO	2.3
1	B	24	ASP	2.2
1	A	197	ALA	2.2

6.2 Non-standard residues in protein, DNA, RNA chains [i](#)

There are no non-standard protein/DNA/RNA residues in this entry.

6.3 Carbohydrates [i](#)

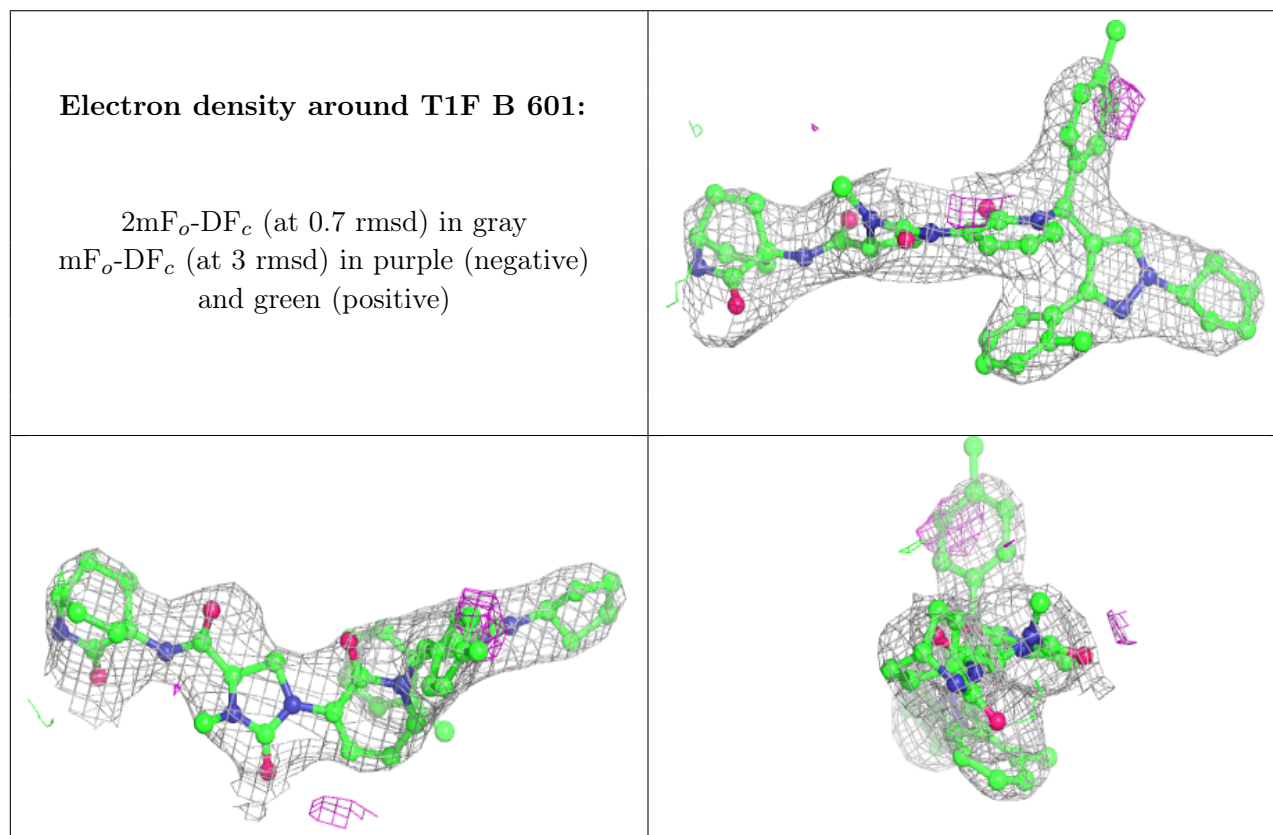
There are no monosaccharides in this entry.

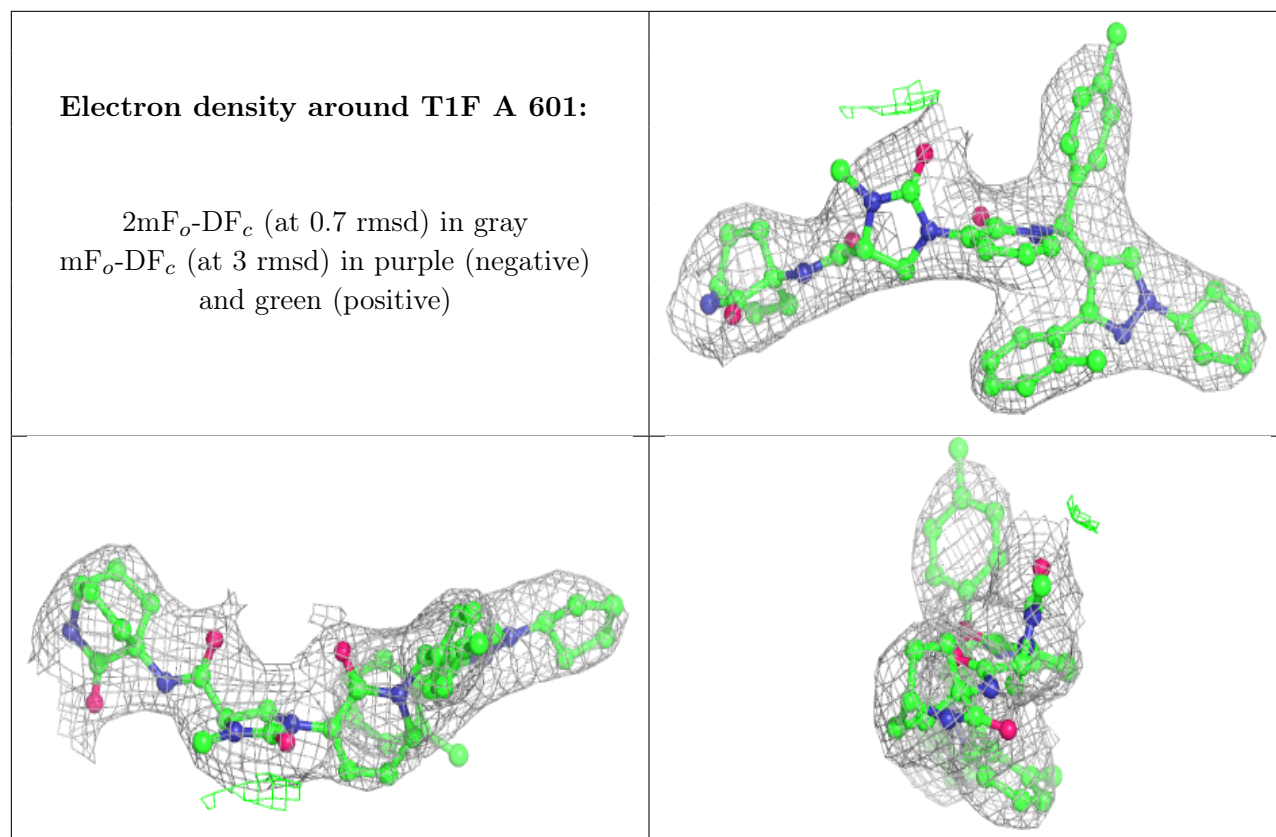
6.4 Ligands [i](#)

In the following table, the Atoms column lists the number of modelled atoms in the group and the number defined in the chemical component dictionary. The B-factors column lists the minimum, median, 95th percentile and maximum values of B factors of atoms in the group. The column labelled 'Q< 0.9' lists the number of atoms with occupancy less than 0.9.

Mol	Type	Chain	Res	Atoms	RSCC	RSR	B-factors(Å ²)	Q<0.9
2	T1F	B	601	51/51	0.92	0.30	68,90,118,121	0
2	T1F	A	601	51/51	0.95	0.20	60,71,84,93	0

The following is a graphical depiction of the model fit to experimental electron density of all instances of the Ligand of Interest. In addition, ligands with molecular weight > 250 and outliers as shown on the geometry validation Tables will also be included. Each fit is shown from different orientation to approximate a three-dimensional view.





6.5 Other polymers [i](#)

There are no such residues in this entry.