



Full wwPDB X-ray Structure Validation Report ⓘ

May 29, 2020 – 02:47 pm BST

PDB ID : 2J9X
Title : Tryptophan Synthase in complex with GP, alpha-D,L-glycerol-phosphate, Cs, pH6.5 - alpha aminoacrylate form - (GP)E(A-A)
Authors : Ngo, H.; Kimmich, N.; Harris, R.; Niks, D.; Blumenstein, L.; Kulik, V.; Barends, T.R.; Schlichting, I.; Dunn, M.F.
Deposited on : 2006-11-16
Resolution : 1.90 Å(reported)

This is a Full wwPDB X-ray Structure Validation Report for a publicly released PDB entry.

We welcome your comments at validation@mail.wwpdb.org

A user guide is available at

<https://www.wwpdb.org/validation/2017/XrayValidationReportHelp>

with specific help available everywhere you see the ⓘ symbol.

The following versions of software and data (see [references ⓘ](#)) were used in the production of this report:

MolProbity : 4.02b-467
Mogul : 1.8.5 (274361), CSD as541be (2020)
Xtriage (Phenix) : 1.13
EDS : 2.11
buster-report : 1.1.7 (2018)
Percentile statistics : 20191225.v01 (using entries in the PDB archive December 25th 2019)
Refmac : 5.8.0158
CCP4 : 7.0.044 (Gargrove)
Ideal geometry (proteins) : Engh & Huber (2001)
Ideal geometry (DNA, RNA) : Parkinson et al. (1996)
Validation Pipeline (wwPDB-VP) : 2.11

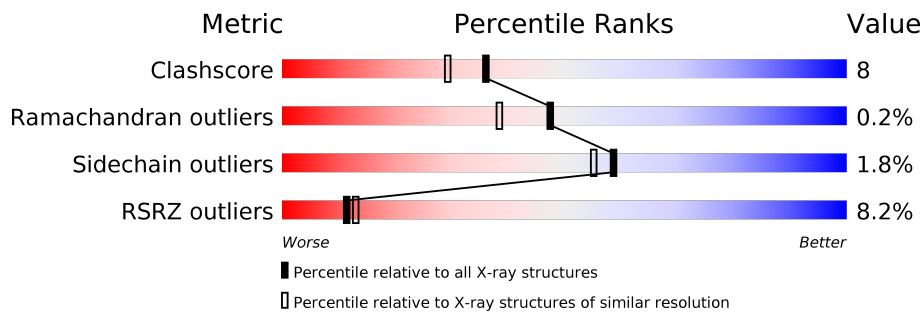
1 Overall quality at a glance

The following experimental techniques were used to determine the structure:

X-RAY DIFFRACTION

The reported resolution of this entry is 1.90 Å.

Percentile scores (ranging between 0-100) for global validation metrics of the entry are shown in the following graphic. The table shows the number of entries on which the scores are based.



Metric	Whole archive (#Entries)	Similar resolution (#Entries, resolution range(Å))
Clashscore	141614	6847 (1.90-1.90)
Ramachandran outliers	138981	6760 (1.90-1.90)
Sidechain outliers	138945	6760 (1.90-1.90)
RSRZ outliers	127900	6082 (1.90-1.90)

The table below summarises the geometric issues observed across the polymeric chains and their fit to the electron density. The red, orange, yellow and green segments on the lower bar indicate the fraction of residues that contain outliers for ≥ 3 , 2, 1 and 0 types of geometric quality criteria respectively. A grey segment represents the fraction of residues that are not modelled. The numeric value for each fraction is indicated below the corresponding segment, with a dot representing fractions $\leq 5\%$. The upper red bar (where present) indicates the fraction of residues that have poor fit to the electron density. The numeric value is given above the bar.

Mol	Chain	Length	Quality of chain
1	A	268	
2	B	396	

The following table lists non-polymeric compounds, carbohydrate monomers and non-standard residues in protein, DNA, RNA chains that are outliers for geometric or electron-density-fit criteria:

Mol	Type	Chain	Res	Chirality	Geometry	Clashes	Electron density
3	G3P	A	1268	X	-	-	-

2 Entry composition [i](#)

There are 7 unique types of molecules in this entry. The entry contains 5345 atoms, of which 0 are hydrogens and 0 are deuteriums.

In the tables below, the ZeroOcc column contains the number of atoms modelled with zero occupancy, the AltConf column contains the number of residues with at least one atom in alternate conformation and the Trace column contains the number of residues modelled with at most 2 atoms.

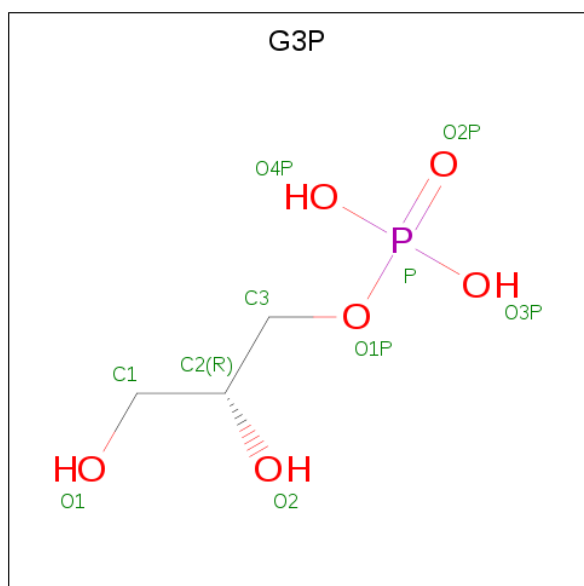
- Molecule 1 is a protein called TRYPTOPHAN SYNTHASE ALPHA CHAIN.

Mol	Chain	Residues	Atoms					ZeroOcc	AltConf	Trace
			Total	C	N	O	S			
1	A	264	Total 1919	C 1223	N 331	O 358	S 7	0	0	1

- Molecule 2 is a protein called TRYPTOPHAN SYNTHASE BETA CHAIN.

Mol	Chain	Residues	Atoms					ZeroOcc	AltConf	Trace
			Total	C	N	O	S			
2	B	395	Total 2962	C 1861	N 522	O 560	S 19	0	0	1

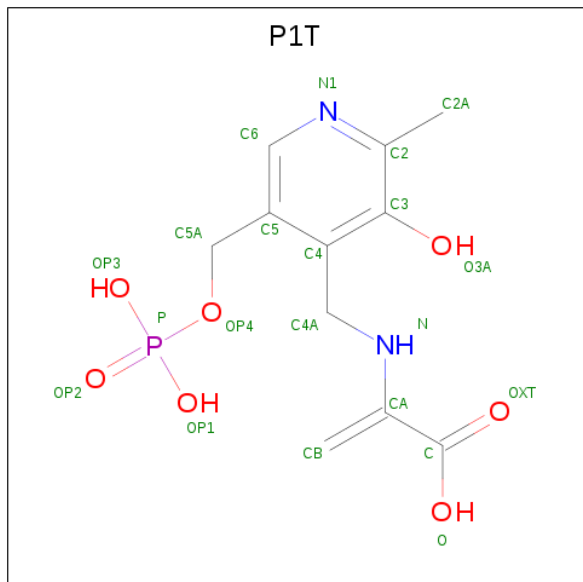
- Molecule 3 is SN-GLYCEROL-3-PHOSPHATE (three-letter code: G3P) (formula: C₃H₉O₆P).



Mol	Chain	Residues	Atoms				ZeroOcc	AltConf
			Total	C	O	P		
3	A	1	Total 10	C 3	O 6	P 1	0	0

- Molecule 4 is 2-[(3-HYDROXY-2-METHYL-5-[(PHOSPHONOXY)METHYL]PY

RIDIN-4-YL}METHYL)AMINO]ACRYLIC ACID (three-letter code: P1T) (formula: $C_{11}H_{15}N_2O_7P$).



Mol	Chain	Residues	Atoms					ZeroOcc	AltConf
			Total	C	N	O	P		
4	B	1	21	11	2	7	1	0	0

- Molecule 5 is CESIUM ION (three-letter code: CS) (formula: Cs).

Mol	Chain	Residues	Atoms		ZeroOcc	AltConf
			Total	Cs		
5	B	3	3	3	0	0

- Molecule 6 is DIMETHYL SULFOXIDE (three-letter code: DMS) (formula: C_2H_6OS).



Mol	Chain	Residues	Atoms				ZeroOcc	AltConf
6	B	1	Total	C	O	S	0	0
			4	2	1	1		
6	B	1	Total	C	O	S	0	0
			4	2	1	1		
6	B	1	Total	C	O	S	0	0
			4	2	1	1		

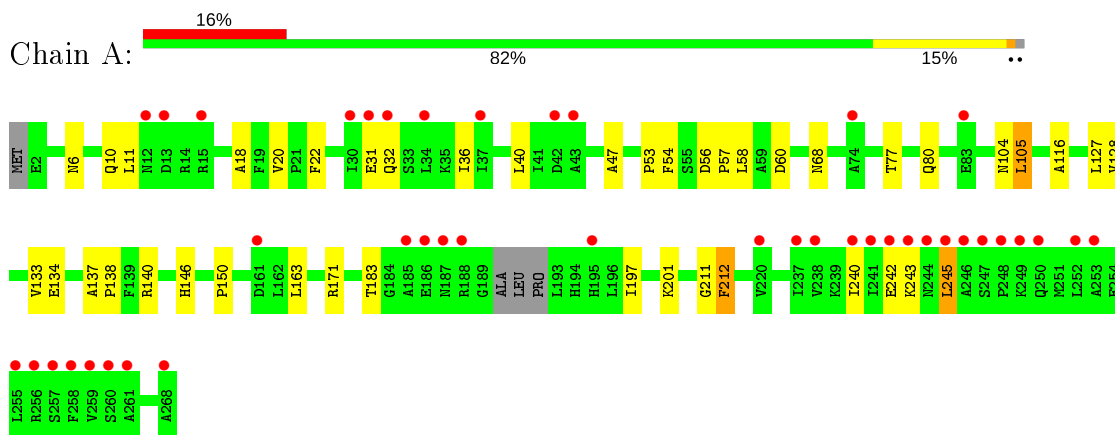
- Molecule 7 is water.

Mol	Chain	Residues	Atoms		ZeroOcc	AltConf
7	A	140	Total	O	0	0
			140	140		
7	B	278	Total	O	0	0
			278	278		

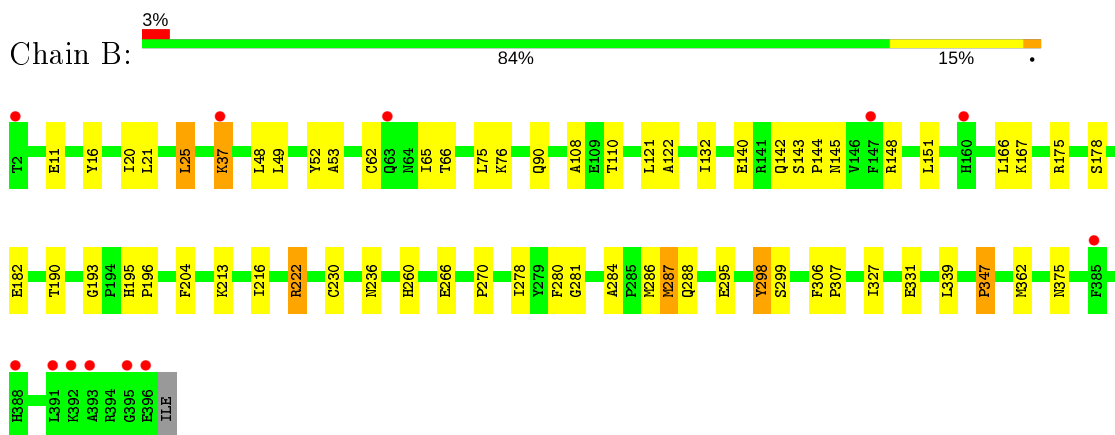
3 Residue-property plots [i](#)

These plots are drawn for all protein, RNA and DNA chains in the entry. The first graphic for a chain summarises the proportions of the various outlier classes displayed in the second graphic. The second graphic shows the sequence view annotated by issues in geometry and electron density. Residues are color-coded according to the number of geometric quality criteria for which they contain at least one outlier: green = 0, yellow = 1, orange = 2 and red = 3 or more. A red dot above a residue indicates a poor fit to the electron density ($RSRZ > 2$). Stretches of 2 or more consecutive residues without any outlier are shown as a green connector. Residues present in the sample, but not in the model, are shown in grey.

- Molecule 1: TRYPTOPHAN SYNTHASE ALPHA CHAIN



- Molecule 2: TRYPTOPHAN SYNTHASE BETA CHAIN



4 Data and refinement statistics

Property	Value	Source
Space group	C 1 2 1	Depositor
Cell constants a, b, c, α , β , γ	183.21Å 59.62Å 67.39Å 90.00° 94.63° 90.00°	Depositor
Resolution (Å)	19.63 – 1.90 19.63 – 1.68	Depositor EDS
% Data completeness (in resolution range)	96.8 (19.63-1.90) 89.1 (19.63-1.68)	Depositor EDS
R_{merge}	0.10	Depositor
R_{sym}	(Not available)	Depositor
$\langle I/\sigma(I) \rangle$ ¹	1.13 (at 1.67Å)	Xtrriage
Refinement program	CNS 1.1	Depositor
R, R_{free}	0.215 , 0.240 0.210 , (Not available)	Depositor DCC
R_{free} test set	No test flags present.	wwPDB-VP
Wilson B-factor (Å ²)	11.9	Xtrriage
Anisotropy	0.931	Xtrriage
Bulk solvent k_{sol} (e/Å ³), B_{sol} (Å ²)	0.38 , 46.2	EDS
L-test for twinning ²	$\langle L \rangle = 0.48$, $\langle L^2 \rangle = 0.31$	Xtrriage
Estimated twinning fraction	No twinning to report.	Xtrriage
F_o, F_c correlation	0.93	EDS
Total number of atoms	5345	wwPDB-VP
Average B, all atoms (Å ²)	17.0	wwPDB-VP

Xtrriage's analysis on translational NCS is as follows: *The largest off-origin peak in the Patterson function is 5.36% of the height of the origin peak. No significant pseudotranslation is detected.*

¹Intensities estimated from amplitudes.

²Theoretical values of $\langle |L| \rangle$, $\langle L^2 \rangle$ for acentric reflections are 0.5, 0.333 respectively for untwinned datasets, and 0.375, 0.2 for perfectly twinned datasets.

5 Model quality i

5.1 Standard geometry i

Bond lengths and bond angles in the following residue types are not validated in this section: CS, G3P, DMS, P1T

The Z score for a bond length (or angle) is the number of standard deviations the observed value is removed from the expected value. A bond length (or angle) with $|Z| > 5$ is considered an outlier worth inspection. RMSZ is the root-mean-square of all Z scores of the bond lengths (or angles).

Mol	Chain	Bond lengths		Bond angles	
		RMSZ	$\# Z > 5$	RMSZ	$\# Z > 5$
1	A	0.34	0/1955	0.60	0/2664
2	B	0.41	1/3020 (0.0%)	0.67	1/4084 (0.0%)
All	All	0.39	1/4975 (0.0%)	0.64	1/6748 (0.0%)

Chiral center outliers are detected by calculating the chiral volume of a chiral center and verifying if the center is modelled as a planar moiety or with the opposite hand. A planarity outlier is detected by checking planarity of atoms in a peptide group, atoms in a mainchain group or atoms of a sidechain that are expected to be planar.

Mol	Chain	#Chirality outliers	#Planarity outliers
2	B	0	1

All (1) bond length outliers are listed below:

Mol	Chain	Res	Type	Atoms	Z	Observed(Å)	Ideal(Å)
2	B	140	GLU	CD-OE2	6.94	1.33	1.25

All (1) bond angle outliers are listed below:

Mol	Chain	Res	Type	Atoms	Z	Observed(°)	Ideal(°)
2	B	287	MET	N-CA-C	-6.29	94.01	111.00

There are no chirality outliers.

All (1) planarity outliers are listed below:

Mol	Chain	Res	Type	Group
2	B	298	TYR	Sidechain

5.2 Too-close contacts [i](#)

In the following table, the Non-H and H(model) columns list the number of non-hydrogen atoms and hydrogen atoms in the chain respectively. The H(added) column lists the number of hydrogen atoms added and optimized by MolProbity. The Clashes column lists the number of clashes within the asymmetric unit, whereas Symm-Clashes lists symmetry related clashes.

Mol	Chain	Non-H	H(model)	H(added)	Clashes	Symm-Clashes
1	A	1919	0	1888	37	0
2	B	2962	0	2923	44	0
3	A	10	0	7	2	0
4	B	21	0	10	2	0
5	B	3	0	0	0	1
6	B	12	0	18	2	0
7	A	140	0	0	3	0
7	B	278	0	0	6	0
All	All	5345	0	4846	78	1

The all-atom clashscore is defined as the number of clashes found per 1000 atoms (including hydrogen atoms). The all-atom clashscore for this structure is 8.

All (78) close contacts within the same asymmetric unit are listed below, sorted by their clash magnitude.

Atom-1	Atom-2	Interatomic distance (Å)	Clash overlap (Å)
1:A:211:GLY:O	1:A:212:PHE:HB2	1.80	0.81
1:A:58:LEU:HD22	7:B:2203:HOH:O	1.96	0.65
1:A:242:GLU:HA	1:A:245:LEU:HD13	1.79	0.63
1:A:54:PHE:H	1:A:68:ASN:ND2	1.96	0.63
2:B:145:ASN:HD21	2:B:148:ARG:HH21	1.44	0.62
2:B:16:TYR:O	2:B:281:GLY:HA2	2.00	0.62
2:B:260:HIS:HD2	2:B:266:GLU:OE1	1.85	0.60
2:B:37:LYS:HA	2:B:37:LYS:HE3	1.85	0.58
2:B:222:ARG:HH11	2:B:222:ARG:HB2	1.68	0.58
2:B:270:PRO:HB3	2:B:287:MET:HG3	1.87	0.57
2:B:145:ASN:ND2	2:B:148:ARG:HH21	2.03	0.57
1:A:54:PHE:H	1:A:68:ASN:HD22	1.52	0.56
1:A:11:LEU:CD1	1:A:18:ALA:HB2	2.35	0.56
2:B:62:CYS:O	7:B:2057:HOH:O	2.18	0.55
2:B:21:LEU:HD21	2:B:178:SER:HA	1.88	0.55
1:A:183:THR:HG22	3:A:1268:G3P:H32	1.89	0.54
1:A:32:GLN:HE21	1:A:32:GLN:HA	1.72	0.53
2:B:167:LYS:HD2	2:B:307:PRO:HG3	1.90	0.53
2:B:48:LEU:O	2:B:52:TYR:HB3	2.09	0.53

Continued on next page...

Continued from previous page...

Atom-1	Atom-2	Interatomic distance (Å)	Clash overlap (Å)
2:B:110:THR:HA	4:B:1396:P1T:OXT	2.10	0.52
2:B:108:ALA:HB3	2:B:132:ILE:HD13	1.91	0.52
1:A:31:GLU:HG2	7:A:2016:HOH:O	2.11	0.51
1:A:36:ILE:O	1:A:40:LEU:HD13	2.10	0.51
2:B:182:GLU:HB2	6:B:1401:DMS:O	2.11	0.51
1:A:32:GLN:HA	1:A:32:GLN:NE2	2.26	0.51
2:B:49:LEU:O	2:B:53:ALA:HB3	2.11	0.50
1:A:53:PRO:HB2	7:A:2058:HOH:O	2.11	0.50
2:B:108:ALA:HB3	2:B:132:ILE:CD1	2.42	0.49
2:B:11:GLU:HG2	7:B:2016:HOH:O	2.12	0.49
2:B:213:LYS:O	2:B:216:ILE:HG22	2.13	0.48
1:A:11:LEU:HD13	1:A:18:ALA:HB2	1.96	0.48
2:B:195:HIS:ND1	2:B:196:PRO:HA	2.29	0.48
2:B:288:GLN:HA	2:B:295:GLU:HG3	1.95	0.48
2:B:327:ILE:HG23	2:B:331:GLU:HB2	1.95	0.48
1:A:197:ILE:O	1:A:201:LYS:HG3	2.14	0.47
1:A:56:ASP:O	1:A:58:LEU:HD13	2.14	0.47
2:B:90:GLN:HA	2:B:204:PHE:HB3	1.96	0.47
2:B:190:THR:HB	7:B:2075:HOH:O	2.15	0.47
1:A:150:PRO:HD2	1:A:171:ARG:HB2	1.97	0.47
2:B:62:CYS:HB3	2:B:65:ILE:HG12	1.97	0.46
1:A:240:ILE:HA	1:A:243:LYS:HD3	1.98	0.46
1:A:133:VAL:HG22	1:A:134:GLU:OE1	2.16	0.46
2:B:25:LEU:HG	2:B:195:HIS:O	2.16	0.46
1:A:104:ASN:HD22	2:B:278:ILE:H	1.64	0.45
2:B:167:LYS:HE3	7:B:2214:HOH:O	2.17	0.45
2:B:142:GLN:NE2	7:B:2126:HOH:O	2.49	0.45
1:A:140:ARG:NH2	7:A:2097:HOH:O	2.49	0.45
2:B:175:ARG:HB3	6:B:1402:DMS:H21	1.99	0.45
1:A:22:PHE:CD1	1:A:22:PHE:C	2.90	0.45
2:B:76:LYS:HB3	2:B:375:ASN:HD22	1.82	0.44
1:A:104:ASN:ND2	2:B:278:ILE:H	2.14	0.44
2:B:339:LEU:HD23	2:B:347:PRO:HD3	1.99	0.44
2:B:230:CYS:SG	4:B:1396:P1T:H6	2.58	0.44
1:A:116:ALA:HA	1:A:146:HIS:CD2	2.53	0.43
1:A:20:VAL:HG22	1:A:47:ALA:HB3	1.99	0.43
2:B:145:ASN:HD22	2:B:148:ARG:HE	1.66	0.43
1:A:54:PHE:O	1:A:57:PRO:HD3	2.18	0.43
1:A:240:ILE:HA	1:A:243:LYS:HG2	2.01	0.43
1:A:53:PRO:HA	1:A:68:ASN:ND2	2.33	0.43
1:A:212:PHE:HA	3:A:1268:G3P:O4P	2.19	0.42

Continued on next page...

Continued from previous page...

Atom-1	Atom-2	Interatomic distance (Å)	Clash overlap (Å)
1:A:137:ALA:HB3	1:A:138:PRO:CD	2.49	0.42
1:A:32:GLN:O	1:A:36:ILE:HG13	2.20	0.42
2:B:298:TYR:CG	2:B:299:SER:N	2.86	0.42
1:A:105:LEU:HD12	1:A:105:LEU:HA	1.87	0.42
1:A:77:THR:OG1	1:A:80:GLN:HG3	2.19	0.42
1:A:60:ASP:HA	1:A:183:THR:OG1	2.20	0.42
2:B:143:SER:OG	2:B:144:PRO:HD3	2.19	0.41
2:B:193:GLY:HA2	2:B:280:PHE:O	2.20	0.41
2:B:66:THR:HA	2:B:362:MET:SD	2.60	0.41
2:B:121:LEU:HD12	2:B:122:ALA:N	2.36	0.41
2:B:166:LEU:HD23	2:B:306:PHE:HB2	2.03	0.41
1:A:211:GLY:O	1:A:212:PHE:CB	2.60	0.41
2:B:284:ALA:O	2:B:286:MET:HG2	2.20	0.41
1:A:56:ASP:OD1	2:B:167:LYS:HE2	2.20	0.41
2:B:20:ILE:HG13	2:B:20:ILE:O	2.21	0.40
1:A:127:LEU:HD23	1:A:128:VAL:N	2.37	0.40
2:B:62:CYS:SG	2:B:75:LEU:HG	2.60	0.40
1:A:6:ASN:O	1:A:10:GLN:HG3	2.21	0.40

All (1) symmetry-related close contacts are listed below. The label for Atom-2 includes the symmetry operator and encoded unit-cell translations to be applied.

Atom-1	Atom-2	Interatomic distance (Å)	Clash overlap (Å)
5:B:1398:CS:CS	5:B:1398:CS:CS[2_655]	1.11	1.09

5.3 Torsion angles [i](#)

5.3.1 Protein backbone [i](#)

In the following table, the Percentiles column shows the percent Ramachandran outliers of the chain as a percentile score with respect to all X-ray entries followed by that with respect to entries of similar resolution.

The Analysed column shows the number of residues for which the backbone conformation was analysed, and the total number of residues.

Mol	Chain	Analysed	Favoured	Allowed	Outliers	Percentiles
1	A	260/268 (97%)	254 (98%)	5 (2%)	1 (0%)	34 24
2	B	393/396 (99%)	380 (97%)	13 (3%)	0	100 100

Continued on next page...

Continued from previous page...

Mol	Chain	Analysed	Favoured	Allowed	Outliers	Percentiles
All	All	653/664 (98%)	634 (97%)	18 (3%)	1 (0%)	47 38

All (1) Ramachandran outliers are listed below:

Mol	Chain	Res	Type
1	A	212	PHE

5.3.2 Protein sidechains [i](#)

In the following table, the Percentiles column shows the percent sidechain outliers of the chain as a percentile score with respect to all X-ray entries followed by that with respect to entries of similar resolution.

The Analysed column shows the number of residues for which the sidechain conformation was analysed, and the total number of residues.

Mol	Chain	Analysed	Rotameric	Outliers	Percentiles
1	A	190/208 (91%)	187 (98%)	3 (2%)	62 60
2	B	303/310 (98%)	297 (98%)	6 (2%)	55 51
All	All	493/518 (95%)	484 (98%)	9 (2%)	59 55

All (9) residues with a non-rotameric sidechain are listed below:

Mol	Chain	Res	Type
1	A	105	LEU
1	A	163	LEU
1	A	245	LEU
2	B	25	LEU
2	B	37	LYS
2	B	151	LEU
2	B	222	ARG
2	B	236	ASN
2	B	347	PRO

Some sidechains can be flipped to improve hydrogen bonding and reduce clashes. All (14) such sidechains are listed below:

Mol	Chain	Res	Type
1	A	10	GLN
1	A	32	GLN
1	A	68	ASN

Continued on next page...

Continued from previous page...

Mol	Chain	Res	Type
1	A	104	ASN
1	A	146	HIS
1	A	210	GLN
1	A	250	GLN
2	B	26	ASN
2	B	42	GLN
2	B	64	ASN
2	B	145	ASN
2	B	236	ASN
2	B	260	HIS
2	B	375	ASN

5.3.3 RNA [i](#)

There are no RNA molecules in this entry.

5.4 Non-standard residues in protein, DNA, RNA chains [i](#)

There are no non-standard protein/DNA/RNA residues in this entry.

5.5 Carbohydrates [i](#)

There are no carbohydrates in this entry.

5.6 Ligand geometry [i](#)

Of 8 ligands modelled in this entry, 3 are monoatomic - leaving 5 for Mogul analysis.

In the following table, the Counts columns list the number of bonds (or angles) for which Mogul statistics could be retrieved, the number of bonds (or angles) that are observed in the model and the number of bonds (or angles) that are defined in the Chemical Component Dictionary. The Link column lists molecule types, if any, to which the group is linked. The Z score for a bond length (or angle) is the number of standard deviations the observed value is removed from the expected value. A bond length (or angle) with $|Z| > 2$ is considered an outlier worth inspection. RMSZ is the root-mean-square of all Z scores of the bond lengths (or angles).

Mol	Type	Chain	Res	Link	Bond lengths			Bond angles		
					Counts	RMSZ	$\# Z > 2$	Counts	RMSZ	$\# Z > 2$
6	DMS	B	1401	-	3,3,3	0.25	0	3,3,3	0.61	0
6	DMS	B	1400	-	3,3,3	0.20	0	3,3,3	0.67	0
6	DMS	B	1402	-	3,3,3	0.18	0	3,3,3	0.64	0

Mol	Type	Chain	Res	Link	Bond lengths			Bond angles		
					Counts	RMSZ	# Z > 2	Counts	RMSZ	# Z > 2
3	G3P	A	1268	-	9,9,9	2.83	1 (11%)	11,12,12	1.28	1 (9%)
4	P1T	B	1396	-	18,21,21	5.73	13 (72%)	23,30,30	3.44	8 (34%)

In the following table, the Chirals column lists the number of chiral outliers, the number of chiral centers analysed, the number of these observed in the model and the number defined in the Chemical Component Dictionary. Similar counts are reported in the Torsion and Rings columns. '-' means no outliers of that kind were identified.

Mol	Type	Chain	Res	Link	Chirals	Torsions	Rings
3	G3P	A	1268	-	1/1/2/2	3/8/8/8	-
4	P1T	B	1396	-	-	4/10/15/15	0/1/1/1

All (14) bond length outliers are listed below:

Mol	Chain	Res	Type	Atoms	Z	Observed(Å)	Ideal(Å)
4	B	1396	P1T	C4A-N	-11.27	1.24	1.46
4	B	1396	P1T	C5-C4	9.96	1.54	1.40
4	B	1396	P1T	CB-CA	9.16	1.54	1.33
4	B	1396	P1T	C3-C4	8.50	1.53	1.40
3	A	1268	G3P	O1P-C3	-7.99	1.14	1.44
4	B	1396	P1T	C2A-C2	-6.26	1.39	1.50
4	B	1396	P1T	P-OP4	-6.18	1.40	1.60
4	B	1396	P1T	C3-C2	5.97	1.46	1.40
4	B	1396	P1T	C-CA	-5.64	1.43	1.52
4	B	1396	P1T	C2-N1	5.05	1.43	1.33
4	B	1396	P1T	C6-N1	3.27	1.41	1.34
4	B	1396	P1T	P-OP3	-2.93	1.43	1.54
4	B	1396	P1T	C6-C5	2.75	1.43	1.37
4	B	1396	P1T	P-OP2	-2.20	1.43	1.50

All (9) bond angle outliers are listed below:

Mol	Chain	Res	Type	Atoms	Z	Observed(°)	Ideal(°)
4	B	1396	P1T	C4-C4A-N	10.61	132.92	111.22
4	B	1396	P1T	OP3-P-OP4	7.57	126.89	106.73
4	B	1396	P1T	C6-N1-C2	4.83	128.11	119.17
4	B	1396	P1T	OP4-C5A-C5	4.12	117.21	109.35
4	B	1396	P1T	O3A-C3-C2	3.63	125.41	117.49
4	B	1396	P1T	C4A-N-CA	3.61	133.94	125.82
4	B	1396	P1T	C3-C2-N1	-2.94	116.97	120.77
4	B	1396	P1T	C5-C6-N1	-2.92	118.96	123.82

Continued on next page...

Continued from previous page...

Mol	Chain	Res	Type	Atoms	Z	Observed(°)	Ideal(°)
3	A	1268	G3P	O2-C2-C1	2.38	119.62	109.12

All (1) chirality outliers are listed below:

Mol	Chain	Res	Type	Atom
3	A	1268	G3P	C2

All (7) torsion outliers are listed below:

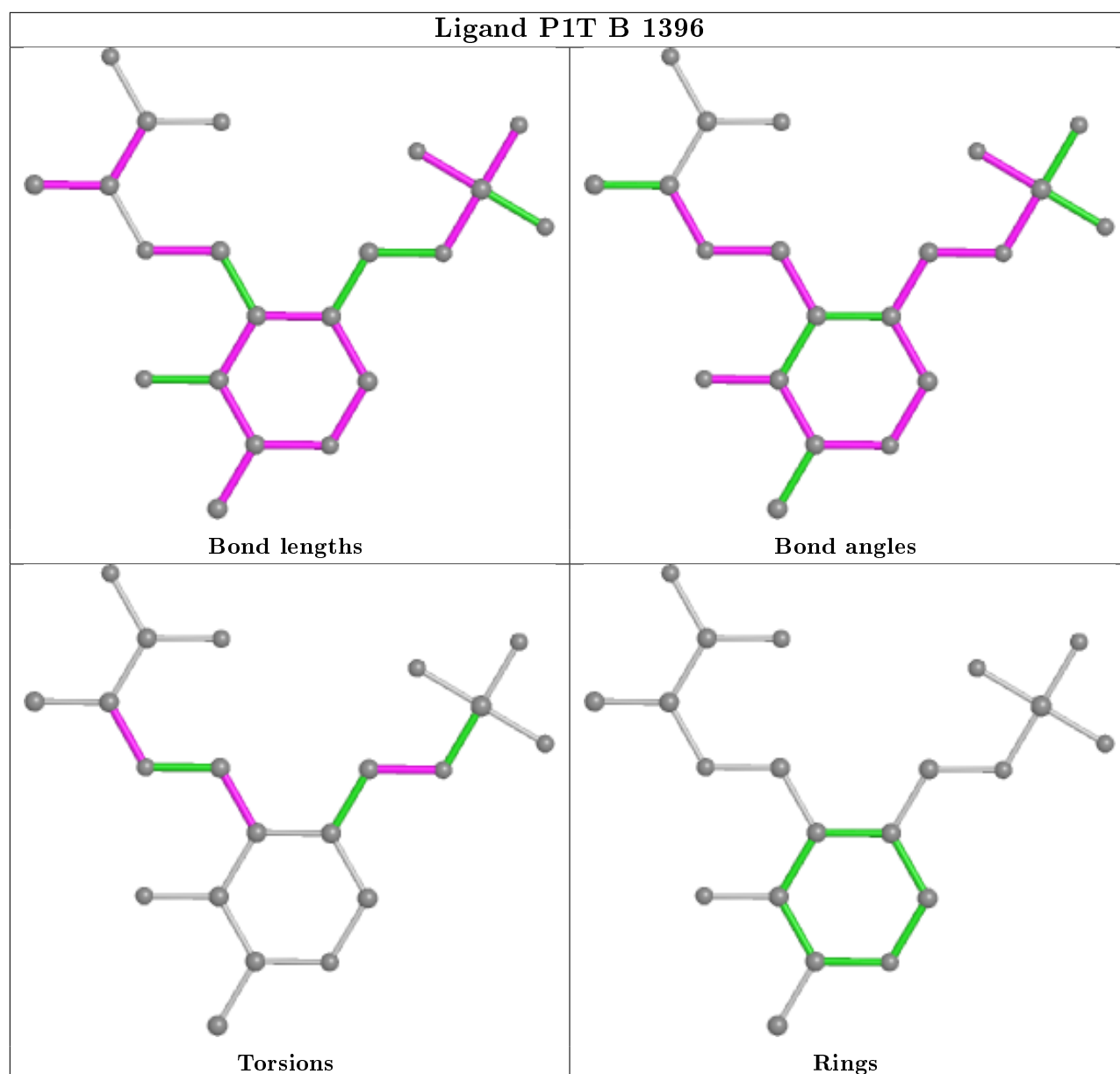
Mol	Chain	Res	Type	Atoms
4	B	1396	P1T	C5-C4-C4A-N
4	B	1396	P1T	C-CA-N-C4A
3	A	1268	G3P	O1-C1-C2-C3
3	A	1268	G3P	O1-C1-C2-O2
3	A	1268	G3P	C2-C3-O1P-P
4	B	1396	P1T	C3-C4-C4A-N
4	B	1396	P1T	C5-C5A-OP4-P

There are no ring outliers.

4 monomers are involved in 6 short contacts:

Mol	Chain	Res	Type	Clashes	Symm-Clashes
6	B	1401	DMS	1	0
6	B	1402	DMS	1	0
3	A	1268	G3P	2	0
4	B	1396	P1T	2	0

The following is a two-dimensional graphical depiction of Mogul quality analysis of bond lengths, bond angles, torsion angles, and ring geometry for all instances of the Ligand of Interest. In addition, ligands with molecular weight > 250 and outliers as shown on the validation Tables will also be included. For torsion angles, if less than 5% of the Mogul distribution of torsion angles is within 10 degrees of the torsion angle in question, then that torsion angle is considered an outlier. Any bond that is central to one or more torsion angles identified as an outlier by Mogul will be highlighted in the graph. For rings, the root-mean-square deviation (RMSD) between the ring in question and similar rings identified by Mogul is calculated over all ring torsion angles. If the average RMSD is greater than 60 degrees and the minimal RMSD between the ring in question and any Mogul-identified rings is also greater than 60 degrees, then that ring is considered an outlier. The outliers are highlighted in purple. The color gray indicates Mogul did not find sufficient equivalents in the CSD to analyse the geometry.



5.7 Other polymers [i](#)

There are no such residues in this entry.

5.8 Polymer linkage issues [i](#)

There are no chain breaks in this entry.

6 Fit of model and data

6.1 Protein, DNA and RNA chains

In the following table, the column labelled ‘#RSRZ> 2’ contains the number (and percentage) of RSRZ outliers, followed by percent RSRZ outliers for the chain as percentile scores relative to all X-ray entries and entries of similar resolution. The OWAB column contains the minimum, median, 95th percentile and maximum values of the occupancy-weighted average B-factor per residue. The column labelled ‘Q< 0.9’ lists the number of (and percentage) of residues with an average occupancy less than 0.9.

Mol	Chain	Analysed	<RSRZ>	#RSRZ>2	OWAB(Å ²)	Q<0.9
1	A	264/268 (98%)	0.90	42 (15%) 1 2	9, 23, 38, 45	0
2	B	395/396 (99%)	0.02	12 (3%) 50 53	2, 10, 22, 51	0
All	All	659/664 (99%)	0.37	54 (8%) 11 13	2, 15, 35, 51	0

All (54) RSRZ outliers are listed below:

Mol	Chain	Res	Type	RSRZ
1	A	247	SER	6.7
2	B	2	THR	5.6
1	A	268	ALA	5.6
1	A	248	PRO	4.8
1	A	246	ALA	4.6
1	A	30	ILE	4.1
1	A	253	ALA	4.0
1	A	15	ARG	3.5
1	A	255	LEU	3.4
1	A	13	ASP	3.4
1	A	43	ALA	3.4
1	A	31	GLU	3.4
1	A	245	LEU	3.2
1	A	187	ASN	3.2
1	A	257	SER	3.0
1	A	188	ARG	3.0
1	A	249	LYS	3.0
2	B	393	ALA	3.0
2	B	396	GLU	3.0
1	A	252	LEU	2.9
1	A	241	ILE	2.9
1	A	74	ALA	2.9
2	B	392	LYS	2.9
1	A	259	VAL	2.9

Continued on next page...

Continued from previous page...

Mol	Chain	Res	Type	RSRZ
1	A	195	HIS	2.8
2	B	37	LYS	2.7
1	A	240	ILE	2.7
1	A	258	PHE	2.6
1	A	244	ASN	2.6
1	A	37	ILE	2.6
2	B	147	PHE	2.6
2	B	391	LEU	2.6
1	A	42	ASP	2.5
1	A	250	GLN	2.5
1	A	260	SER	2.4
2	B	388	HIS	2.4
1	A	261	ALA	2.3
1	A	238	VAL	2.3
1	A	34	LEU	2.3
1	A	12	ASN	2.3
2	B	385	PHE	2.3
1	A	186	GLU	2.2
1	A	256	ARG	2.2
1	A	242	GLU	2.2
1	A	185	ALA	2.2
1	A	83	GLU	2.2
1	A	237	ILE	2.1
1	A	220	VAL	2.1
1	A	243	LYS	2.1
2	B	63	GLN	2.1
2	B	395	GLY	2.1
1	A	161	ASP	2.0
1	A	32	GLN	2.0
2	B	160	HIS	2.0

6.2 Non-standard residues in protein, DNA, RNA chains [i](#)

There are no non-standard protein/DNA/RNA residues in this entry.

6.3 Carbohydrates [i](#)

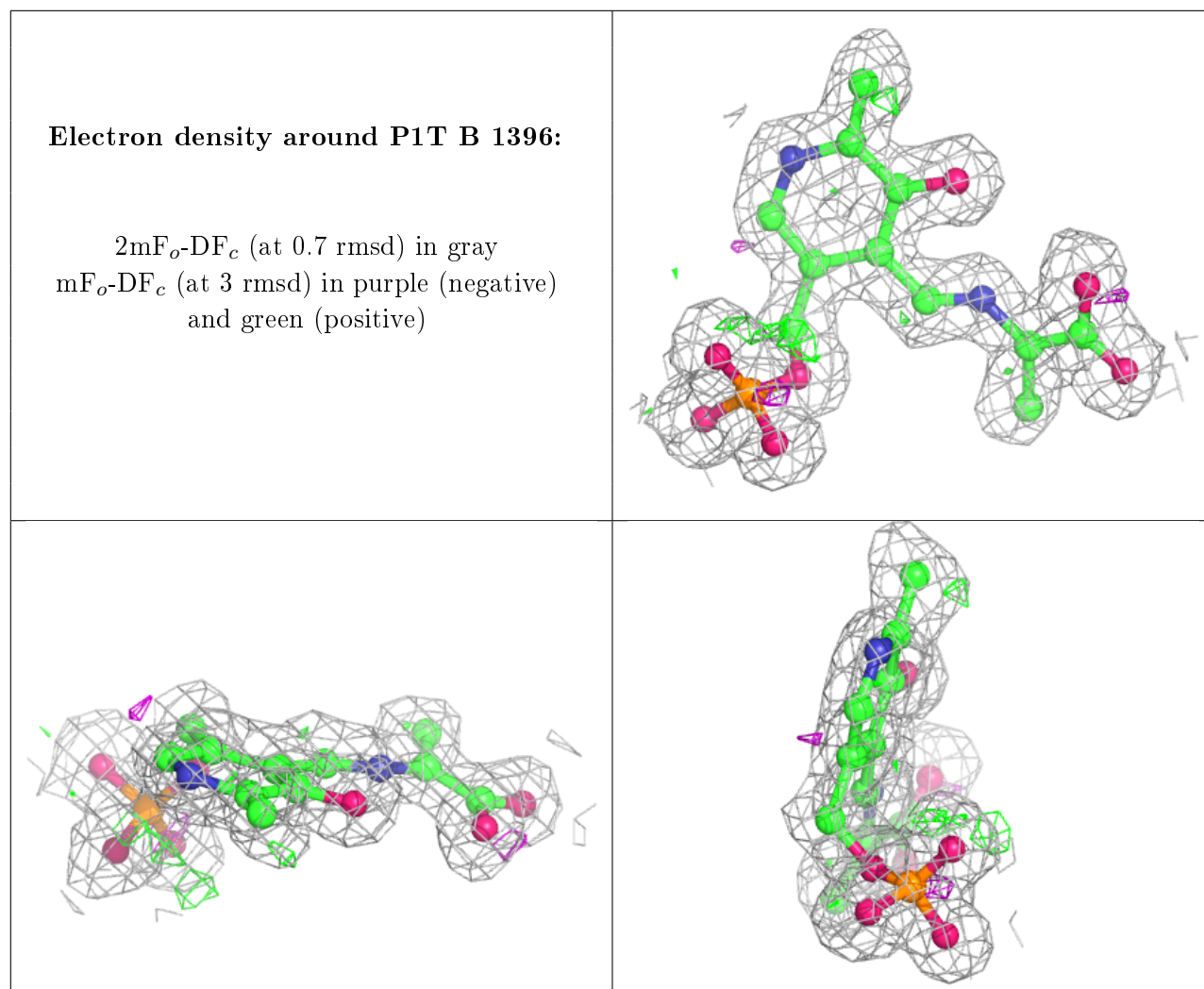
There are no carbohydrates in this entry.

6.4 Ligands

In the following table, the Atoms column lists the number of modelled atoms in the group and the number defined in the chemical component dictionary. The B-factors column lists the minimum, median, 95th percentile and maximum values of B factors of atoms in the group. The column labelled 'Q< 0.9' lists the number of atoms with occupancy less than 0.9.

Mol	Type	Chain	Res	Atoms	RSCC	RSR	B-factors(\AA^2)	Q<0.9
6	DMS	B	1402	4/4	0.81	0.22	38,38,39,39	4
6	DMS	B	1400	4/4	0.81	0.22	27,28,28,29	0
3	G3P	A	1268	10/10	0.89	0.14	21,24,26,26	0
5	CS	B	1397	1/1	0.94	0.18	9,9,9,9	1
5	CS	B	1398	1/1	0.94	0.15	28,28,28,28	0
6	DMS	B	1401	4/4	0.96	0.16	31,31,31,32	0
4	P1T	B	1396	21/21	0.96	0.09	3,5,9,10	0
5	CS	B	1399	1/1	0.99	0.25	30,30,30,30	1

The following is a graphical depiction of the model fit to experimental electron density of all instances of the Ligand of Interest. In addition, ligands with molecular weight > 250 and outliers as shown on the geometry validation Tables will also be included. Each fit is shown from different orientation to approximate a three-dimensional view.



6.5 Other polymers [\(i\)](#)

There are no such residues in this entry.