



# Full wwPDB X-ray Structure Validation Report ⓘ

Sep 10, 2023 – 11:06 AM EDT

PDB ID : 4J96  
Title : Crystal Structure of FGF Receptor 2 (FGFR2) Kinase Domain Harboring the Pathogenic Gain-of-Function K659M Mutation Identified in Cervical Cancer.  
Authors : Chen, H.; Mohammadi, M.  
Deposited on : 2013-02-15  
Resolution : 2.30 Å(reported)

This is a Full wwPDB X-ray Structure Validation Report for a publicly released PDB entry.

We welcome your comments at [validation@mail.wwpdb.org](mailto:validation@mail.wwpdb.org)

A user guide is available at

<https://www.wwpdb.org/validation/2017/XrayValidationReportHelp>

with specific help available everywhere you see the ⓘ symbol.

The types of validation reports are described at

<http://www.wwpdb.org/validation/2017/FAQs#types>.

---

The following versions of software and data (see [references ⓘ](#)) were used in the production of this report:

MolProbity : 4.02b-467  
Mogul : 1.8.5 (274361), CSD as541be (2020)  
Xtriage (Phenix) : 1.13  
EDS : 2.35.1  
buster-report : 1.1.7 (2018)  
Percentile statistics : 20191225.v01 (using entries in the PDB archive December 25th 2019)  
Refmac : 5.8.0158  
CCP4 : 7.0.044 (Gargrove)  
Ideal geometry (proteins) : Engh & Huber (2001)  
Ideal geometry (DNA, RNA) : Parkinson et al. (1996)  
Validation Pipeline (wwPDB-VP) : 2.35.1

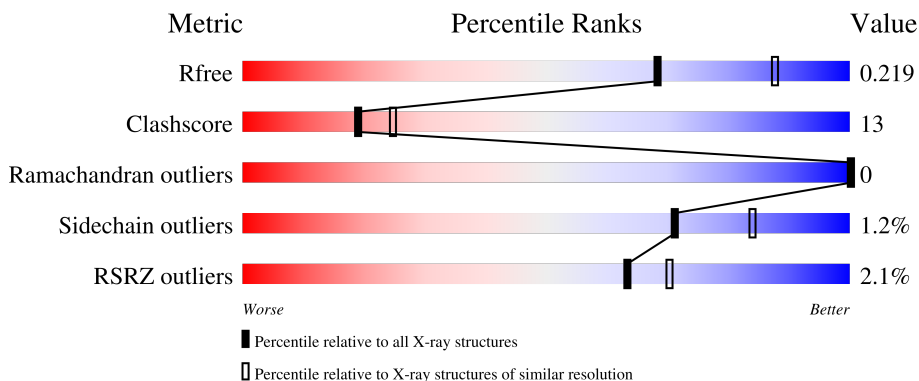
# 1 Overall quality at a glance

The following experimental techniques were used to determine the structure:

*X-RAY DIFFRACTION*

The reported resolution of this entry is 2.30 Å.

Percentile scores (ranging between 0-100) for global validation metrics of the entry are shown in the following graphic. The table shows the number of entries on which the scores are based.



Metric	Whole archive (#Entries)	Similar resolution (#Entries, resolution range(Å))
$R_{free}$	130704	5042 (2.30-2.30)
Clashscore	141614	5643 (2.30-2.30)
Ramachandran outliers	138981	5575 (2.30-2.30)
Sidechain outliers	138945	5575 (2.30-2.30)
RSRZ outliers	127900	4938 (2.30-2.30)

The table below summarises the geometric issues observed across the polymeric chains and their fit to the electron density. The red, orange, yellow and green segments of the lower bar indicate the fraction of residues that contain outliers for  $\geq 3$ , 2, 1 and 0 types of geometric quality criteria respectively. A grey segment represents the fraction of residues that are not modelled. The numeric value for each fraction is indicated below the corresponding segment, with a dot representing fractions  $\leq 5\%$ . The upper red bar (where present) indicates the fraction of residues that have poor fit to the electron density. The numeric value is given above the bar.

Mol	Chain	Length	Quality of chain
1	A	324	 2% 72% 19% • 7%
1	B	324	 2% 72% 20% • 6%

The following table lists non-polymeric compounds, carbohydrate monomers and non-standard residues in protein, DNA, RNA chains that are outliers for geometric or electron-density-fit criteria:

Mol	Type	Chain	Res	Chirality	Geometry	Clashes	Electron density
3	FLC	B	804	-	-	X	-

## 2 Entry composition i

There are 6 unique types of molecules in this entry. The entry contains 5124 atoms, of which 27 are hydrogens and 0 are deuteriums.

In the tables below, the ZeroOcc column contains the number of atoms modelled with zero occupancy, the AltConf column contains the number of residues with at least one atom in alternate conformation and the Trace column contains the number of residues modelled with at most 2 atoms.

- Molecule 1 is a protein called Fibroblast growth factor receptor 2.

Mol	Chain	Residues	Atoms					ZeroOcc	AltConf	Trace
			Total	C	N	O	S			
1	A	302	2396	1523	401	449	23	0	2	0
1	B	305	2445	1553	412	456	24	0	4	0

There are 30 discrepancies between the modelled and reference sequences:

Chain	Residue	Modelled	Actual	Comment	Reference
A	445	MET	-	expression tag	UNP P21802
A	446	GLY	-	expression tag	UNP P21802
A	447	SER	-	expression tag	UNP P21802
A	448	SER	-	expression tag	UNP P21802
A	449	HIS	-	expression tag	UNP P21802
A	450	HIS	-	expression tag	UNP P21802
A	451	HIS	-	expression tag	UNP P21802
A	452	HIS	-	expression tag	UNP P21802
A	453	HIS	-	expression tag	UNP P21802
A	454	HIS	-	expression tag	UNP P21802
A	455	SER	-	expression tag	UNP P21802
A	456	GLN	-	expression tag	UNP P21802
A	457	ASP	-	expression tag	UNP P21802
A	491	ALA	CYS	engineered mutation	UNP P21802
A	659	MET	LYS	engineered mutation	UNP P21802
B	445	MET	-	expression tag	UNP P21802
B	446	GLY	-	expression tag	UNP P21802
B	447	SER	-	expression tag	UNP P21802
B	448	SER	-	expression tag	UNP P21802
B	449	HIS	-	expression tag	UNP P21802
B	450	HIS	-	expression tag	UNP P21802
B	451	HIS	-	expression tag	UNP P21802
B	452	HIS	-	expression tag	UNP P21802
B	453	HIS	-	expression tag	UNP P21802
B	454	HIS	-	expression tag	UNP P21802

*Continued on next page...*

Continued from previous page...

Chain	Residue	Modelled	Actual	Comment	Reference
B	455	SER	-	expression tag	UNP P21802
B	456	GLN	-	expression tag	UNP P21802
B	457	ASP	-	expression tag	UNP P21802
B	491	ALA	CYS	engineered mutation	UNP P21802
B	659	MET	LYS	engineered mutation	UNP P21802

- Molecule 2 is SULFATE ION (three-letter code: SO4) (formula: O<sub>4</sub>S).



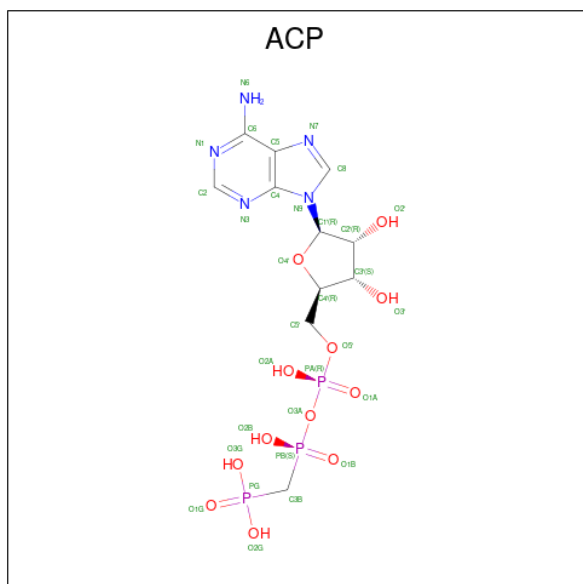
Mol	Chain	Residues	Atoms			ZeroOcc	AltConf
			Total	O	S		
2	A	1	5	4	1	0	0
2	B	1	5	4	1	0	0
2	B	1	5	4	1	0	0

- Molecule 3 is CITRATE ANION (three-letter code: FLC) (formula: C<sub>6</sub>H<sub>5</sub>O<sub>7</sub>).



Mol	Chain	Residues	Atoms				ZeroOcc	AltConf
			Total	C	H	O		
3	A	1	18	6	5	7	0	0
3	B	1	18	6	5	7	0	0

- Molecule 4 is PHOSPHOMETHYLPHOSPHONIC ACID ADENYLATE ESTER (three-letter code: ACP) (formula:  $C_{11}H_{18}N_5O_{12}P_3$ ).



Mol	Chain	Residues	Atoms					ZeroOcc	AltConf	
			Total	C	H	N	O			P
4	B	1	48	11	17	5	12	3	0	0

- Molecule 5 is MAGNESIUM ION (three-letter code: MG) (formula: Mg).

Mol	Chain	Residues	Atoms		ZeroOcc	AltConf
5	B	1	Total 1	Mg 1	0	0

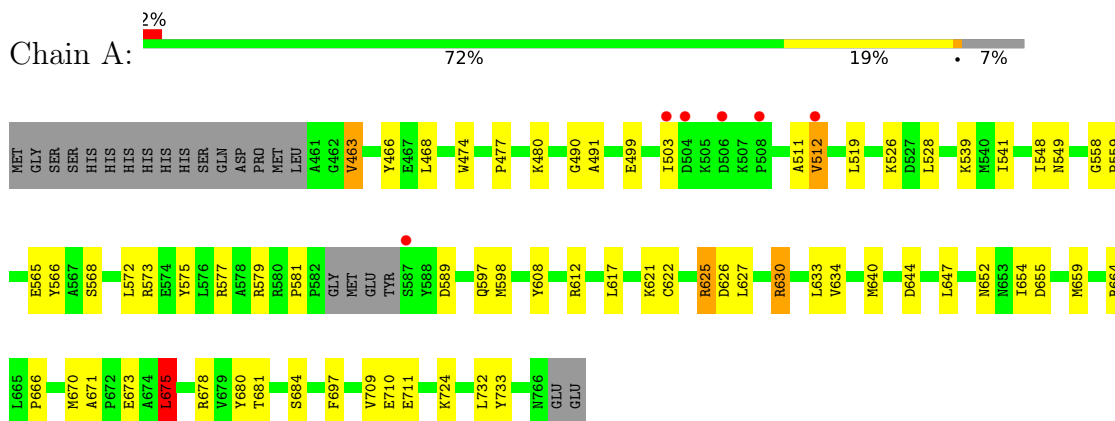
- Molecule 6 is water.

Mol	Chain	Residues	Atoms		ZeroOcc	AltConf
6	A	85	Total 85	O 85	0	0
6	B	98	Total 98	O 98	0	0

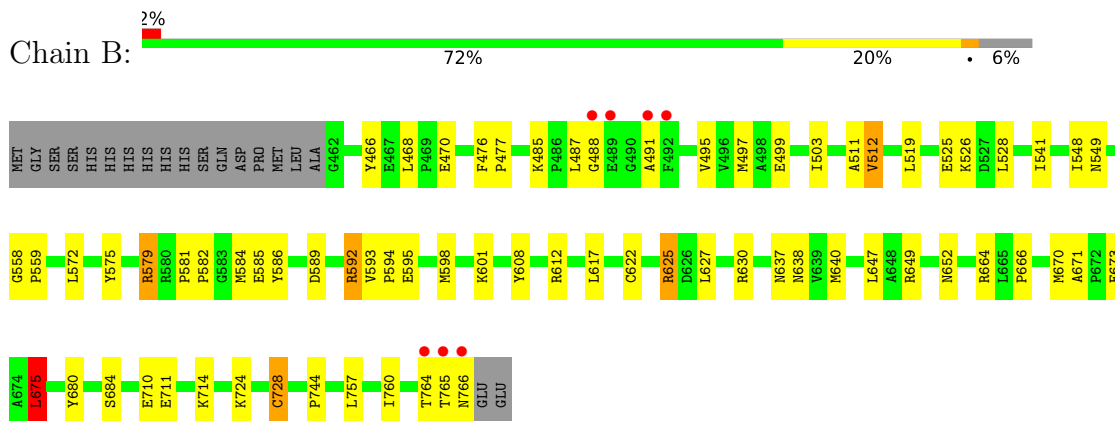
### 3 Residue-property plots [i](#)

These plots are drawn for all protein, RNA, DNA and oligosaccharide chains in the entry. The first graphic for a chain summarises the proportions of the various outlier classes displayed in the second graphic. The second graphic shows the sequence view annotated by issues in geometry and electron density. Residues are color-coded according to the number of geometric quality criteria for which they contain at least one outlier: green = 0, yellow = 1, orange = 2 and red = 3 or more. A red dot above a residue indicates a poor fit to the electron density ( $RSRZ > 2$ ). Stretches of 2 or more consecutive residues without any outlier are shown as a green connector. Residues present in the sample, but not in the model, are shown in grey.

- Molecule 1: Fibroblast growth factor receptor 2



- Molecule 1: Fibroblast growth factor receptor 2





## 4 Data and refinement statistics

Property	Value	Source
Space group	P 43 2 2	Depositor
Cell constants a, b, c, $\alpha$ , $\beta$ , $\gamma$	73.85Å 73.85Å 310.72Å 90.00° 90.00° 90.00°	Depositor
Resolution (Å)	47.55 – 2.30 47.55 – 2.30	Depositor EDS
% Data completeness (in resolution range)	99.7 (47.55-2.30) 96.3 (47.55-2.30)	Depositor EDS
$R_{merge}$	(Not available)	Depositor
$R_{sym}$	0.11	Depositor
$\langle I/\sigma(I) \rangle$ <sup>1</sup>	4.03 (at 2.29Å)	Xtrriage
Refinement program	PHENIX (phenix.refine: 1.8.1_1168)	Depositor
R, $R_{free}$	0.176 , 0.219 0.179 , 0.219	Depositor DCC
$R_{free}$ test set	2000 reflections (5.05%)	wwPDB-VP
Wilson B-factor (Å <sup>2</sup> )	39.6	Xtrriage
Anisotropy	0.202	Xtrriage
Bulk solvent $k_{sol}$ (e/Å <sup>3</sup> ), $B_{sol}$ (Å <sup>2</sup> )	0.36 , 34.9	EDS
L-test for twinning <sup>2</sup>	$\langle  L  \rangle = 0.48$ , $\langle L^2 \rangle = 0.31$	Xtrriage
Estimated twinning fraction	No twinning to report.	Xtrriage
$F_o, F_c$ correlation	0.95	EDS
Total number of atoms	5124	wwPDB-VP
Average B, all atoms (Å <sup>2</sup> )	39.0	wwPDB-VP

Xtrriage's analysis on translational NCS is as follows: *The largest off-origin peak in the Patterson function is 4.07% of the height of the origin peak. No significant pseudotranslation is detected.*

<sup>1</sup>Intensities estimated from amplitudes.

<sup>2</sup>Theoretical values of  $\langle |L| \rangle$ ,  $\langle L^2 \rangle$  for acentric reflections are 0.5, 0.333 respectively for untwinned datasets, and 0.375, 0.2 for perfectly twinned datasets.

## 5 Model quality [i](#)

### 5.1 Standard geometry [i](#)

Bond lengths and bond angles in the following residue types are not validated in this section: FLC, ACP, MG, SO4

The Z score for a bond length (or angle) is the number of standard deviations the observed value is removed from the expected value. A bond length (or angle) with  $|Z| > 5$  is considered an outlier worth inspection. RMSZ is the root-mean-square of all Z scores of the bond lengths (or angles).

Mol	Chain	Bond lengths		Bond angles	
		RMSZ	# $ Z  > 5$	RMSZ	# $ Z  > 5$
1	A	0.63	0/2453	0.68	3/3323 (0.1%)
1	B	0.66	1/2507 (0.0%)	0.72	4/3393 (0.1%)
All	All	0.64	1/4960 (0.0%)	0.70	7/6716 (0.1%)

All (1) bond length outliers are listed below:

Mol	Chain	Res	Type	Atoms	Z	Observed(Å)	Ideal(Å)
1	B	728	CYS	CB-SG	-5.44	1.73	1.81

All (7) bond angle outliers are listed below:

Mol	Chain	Res	Type	Atoms	Z	Observed(°)	Ideal(°)
1	B	625	ARG	NE-CZ-NH2	-6.49	117.06	120.30
1	A	625	ARG	NE-CZ-NH2	-5.76	117.42	120.30
1	A	630	ARG	CG-CD-NE	-5.51	100.23	111.80
1	A	675	LEU	CA-CB-CG	5.43	127.78	115.30
1	B	625	ARG	NE-CZ-NH1	5.39	123.00	120.30
1	B	675	LEU	CA-CB-CG	5.32	127.53	115.30
1	B	579	ARG	NE-CZ-NH2	-5.10	117.75	120.30

There are no chirality outliers.

There are no planarity outliers.

### 5.2 Too-close contacts [i](#)

In the following table, the Non-H and H(model) columns list the number of non-hydrogen atoms and hydrogen atoms in the chain respectively. The H(added) column lists the number of hydrogen atoms added and optimized by MolProbity. The Clashes column lists the number of clashes within the asymmetric unit, whereas Symm-Clashes lists symmetry-related clashes.

Mol	Chain	Non-H	H(model)	H(added)	Clashes	Symm-Clashes
1	A	2396	0	2362	61	0
1	B	2445	0	2423	74	0
2	A	5	0	0	0	0
2	B	10	0	0	1	0
3	A	13	5	5	3	0
3	B	13	5	5	5	0
4	B	31	17	14	3	0
5	B	1	0	0	0	0
6	A	85	0	0	7	0
6	B	98	0	0	8	0
All	All	5097	27	4809	126	0

The all-atom clashscore is defined as the number of clashes found per 1000 atoms (including hydrogen atoms). The all-atom clashscore for this structure is 13.

All (126) close contacts within the same asymmetric unit are listed below, sorted by their clash magnitude.

Atom-1	Atom-2	Interatomic distance (Å)	Clash overlap (Å)
1:B:581:PRO:HD2	1:B:584:MET:HE3	1.11	1.10
1:B:581:PRO:HD2	1:B:584:MET:CE	1.84	1.07
1:A:572:LEU:HD13	1:A:640:MET:HE1	1.36	1.05
1:B:572:LEU:HD13	1:B:640:MET:HE1	1.37	1.03
1:A:572:LEU:HD13	1:A:640:MET:CE	1.91	0.98
1:B:760:ILE:HB	6:B:965:HOH:O	1.70	0.91
1:B:572:LEU:HD13	1:B:640:MET:CE	2.01	0.91
1:B:572:LEU:CD1	1:B:640:MET:HE1	2.05	0.86
1:B:581:PRO:CD	1:B:584:MET:HE3	2.04	0.85
1:A:572:LEU:CD1	1:A:640:MET:HE1	2.07	0.83
1:B:765:THR:O	1:B:766:ASN:HB2	1.79	0.83
1:B:760:ILE:O	1:B:764:THR:HG23	1.79	0.82
1:A:630:ARG:NH2	1:A:666:PRO:HG2	1.96	0.80
1:B:757:LEU:HA	6:B:965:HOH:O	1.82	0.79
1:B:485:LYS:HE2	1:B:497:MET:CE	2.13	0.78
1:B:652:ASN:HB2	6:B:982:HOH:O	1.83	0.77
1:A:491:ALA:HB1	1:B:491:ALA:HB2	1.67	0.77
1:B:608:TYR:CZ	1:B:612:ARG:HD2	2.21	0.76
1:B:582:PRO:HG2	1:B:592:ARG:HB2	1.68	0.75
1:B:488:GLY:HA3	4:B:803:ACP:C5'	2.18	0.74
1:B:541:ILE:HD13	1:B:617:LEU:HD11	1.70	0.73
1:A:549:ASN:HB2	1:A:565:GLU:OE2	1.88	0.73
1:B:724:LYS:HE3	1:B:728:CYS:O	1.88	0.73
1:A:575:TYR:O	1:A:579:ARG:HG2	1.88	0.73

*Continued on next page...*

*Continued from previous page...*

Atom-1	Atom-2	Interatomic distance (Å)	Clash overlap (Å)
1:B:585:GLU:HG2	1:B:586:TYR:CD1	2.23	0.72
1:A:711:GLU:OE2	1:B:558:GLY:HA2	1.91	0.71
1:B:595:GLU:OE1	1:B:595:GLU:N	2.18	0.70
1:B:630:ARG:NH2	1:B:666:PRO:HG2	2.07	0.69
1:A:644:ASP:OD2	6:A:971:HOH:O	2.12	0.67
1:A:654:ILE:O	1:A:655:ASP:HB2	1.93	0.66
1:B:485:LYS:HE2	1:B:497:MET:HE3	1.77	0.66
1:A:608:TYR:CZ	1:A:612:ARG:HD2	2.30	0.66
1:B:485:LYS:HE2	1:B:497:MET:HE1	1.77	0.65
1:A:579:ARG:HB2	1:A:598:MET:HG2	1.80	0.63
1:B:488:GLY:HA3	4:B:803:ACP:H5'2	1.80	0.62
1:B:670:MET:SD	1:B:675:LEU:HD13	2.38	0.62
1:A:724:LYS:NZ	6:A:979:HOH:O	2.32	0.62
1:A:466:TYR:CE2	1:A:468:LEU:HD23	2.35	0.62
1:A:572:LEU:HD13	1:A:640:MET:HE3	1.81	0.61
1:B:575:TYR:CE2	1:B:579:ARG:NH2	2.69	0.61
1:A:503:ILE:HG22	1:A:512:VAL:HG13	1.81	0.60
1:A:559:PRO:HA	1:B:710:GLU:CG	2.31	0.60
1:B:649:ARG:HH21	3:B:804:FLC:HG2	1.64	0.60
1:B:499:GLU:OE2	6:B:974:HOH:O	2.17	0.58
1:A:710:GLU:CG	1:B:559:PRO:HA	2.34	0.57
1:B:664:ARG:HH21	3:B:804:FLC:HG1	1.68	0.57
1:A:678:ARG:NH2	1:B:525:GLU:OE2	2.32	0.57
1:A:490:GLY:HA3	6:A:913:HOH:O	2.05	0.57
1:A:709:VAL:HG13	6:A:954:HOH:O	2.04	0.56
1:B:630:ARG:HH22	1:B:666:PRO:HG2	1.68	0.56
1:A:625:ARG:HD3	1:A:647:LEU:O	2.06	0.56
1:B:601:LYS:HE3	1:B:765:THR:OG1	2.06	0.56
1:B:625:ARG:HD3	1:B:647:LEU:O	2.06	0.56
1:A:499:GLU:HG3	1:A:511:ALA:HB1	1.89	0.54
1:B:541:ILE:CD1	1:B:617:LEU:HD11	2.35	0.54
1:A:664:ARG:NH2	3:A:802:FLC:OA2	2.34	0.54
1:A:463:VAL:HG13	1:A:528:LEU:HD23	1.90	0.53
1:B:664:ARG:HH21	3:B:804:FLC:HA1	1.74	0.53
1:A:681:THR:HB	6:A:936:HOH:O	2.08	0.53
1:B:541:ILE:HD11	1:B:622[B]:CYS:SG	2.49	0.53
1:A:541:ILE:HD13	1:A:617:LEU:HD11	1.91	0.52
1:B:585:GLU:H	1:B:585:GLU:CD	2.13	0.52
1:B:499:GLU:HG3	1:B:511:ALA:HB1	1.92	0.52
1:B:503:ILE:HG22	1:B:512:VAL:CG1	2.40	0.52
1:A:526:LYS:NZ	3:A:802:FLC:OA1	2.33	0.51

*Continued on next page...*

*Continued from previous page...*

Atom-1	Atom-2	Interatomic distance (Å)	Clash overlap (Å)
1:A:519:LEU:HD11	1:A:528:LEU:HD13	1.92	0.51
1:A:491:ALA:HB1	1:B:491:ALA:CB	2.38	0.51
1:B:608:TYR:CE2	1:B:612:ARG:HD2	2.45	0.51
1:B:585:GLU:HG2	1:B:586:TYR:HD1	1.72	0.50
1:B:549:ASN:HB3	6:B:907:HOH:O	2.12	0.49
1:B:572:LEU:HD22	1:B:640:MET:CE	2.42	0.49
1:A:621:LYS:HD2	1:A:652:ASN:OD1	2.13	0.49
1:A:581:PRO:HA	1:A:597:GLN:NE2	2.28	0.49
1:A:573:ARG:O	1:A:577:ARG:HG3	2.13	0.48
1:B:466:TYR:CE2	1:B:468:LEU:HD13	2.49	0.48
1:B:488:GLY:HA3	4:B:803:ACP:H5'1	1.94	0.48
1:A:558:GLY:HA2	1:B:711:GLU:OE2	2.13	0.48
1:B:582:PRO:HG2	1:B:592:ARG:CB	2.41	0.47
1:A:559:PRO:HA	1:B:710:GLU:HG3	1.96	0.47
1:A:549:ASN:ND2	1:A:565:GLU:OE2	2.41	0.47
1:A:625:ARG:HH22	3:A:802:FLC:CGC	2.27	0.47
1:B:526:LYS:HE3	1:B:664:ARG:NH2	2.29	0.47
1:A:710:GLU:HG3	1:B:559:PRO:HA	1.97	0.47
1:B:519:LEU:HD11	1:B:528:LEU:HD13	1.97	0.46
1:A:541:ILE:HD11	1:A:622[B]:CYS:SG	2.56	0.46
1:A:630:ARG:HH22	1:A:666:PRO:HG2	1.74	0.46
1:B:680:TYR:CE1	1:B:684:SER:HB2	2.51	0.46
1:A:627:LEU:HA	1:A:627:LEU:HD12	1.81	0.46
1:A:675:LEU:O	1:A:678:ARG:NH2	2.44	0.45
1:A:589:ASP:HA	6:A:944:HOH:O	2.16	0.45
1:B:487:LEU:HD12	1:B:495:VAL:HG12	1.98	0.45
1:B:637:ASN:HB2	2:B:802:SO4:O2	2.17	0.45
1:A:477:PRO:HG2	1:A:480:LYS:HG3	1.98	0.44
1:A:724:LYS:HG3	1:A:733:TYR:HB2	1.99	0.44
1:B:548:ILE:HD12	1:B:548:ILE:HA	1.88	0.43
1:B:503:ILE:HG22	1:B:512:VAL:HG13	2.01	0.43
1:A:671:ALA:HB1	1:A:673:GLU:OE2	2.19	0.43
1:B:673:GLU:CG	1:B:744:PRO:HG3	2.49	0.43
1:B:724:LYS:CE	1:B:728:CYS:O	2.63	0.43
1:B:470:GLU:HA	6:B:925:HOH:O	2.18	0.43
1:A:575:TYR:CE2	1:A:634:VAL:HG11	2.54	0.43
1:A:680:TYR:CE1	1:A:684:SER:HB2	2.53	0.43
1:A:697:PHE:CZ	1:A:732:LEU:HD13	2.54	0.43
1:B:627:LEU:HD12	1:B:627:LEU:HA	1.91	0.43
1:A:626:ASP:OD1	1:A:630:ARG:NH2	2.52	0.43
1:B:476:PHE:CD1	1:B:477:PRO:HD2	2.54	0.43

*Continued on next page...*

Continued from previous page...

Atom-1	Atom-2	Interatomic distance (Å)	Clash overlap (Å)
1:A:659:MET:HB2	1:A:678:ARG:HD3	2.01	0.42
1:A:526:LYS:NZ	6:A:918:HOH:O	2.52	0.42
1:B:664:ARG:NH2	3:B:804:FLC:HA1	2.34	0.42
1:A:477:PRO:HG2	1:A:480:LYS:CG	2.49	0.42
1:B:664:ARG:N	3:B:804:FLC:OA2	2.52	0.42
1:A:724:LYS:HG3	1:A:733:TYR:CB	2.49	0.42
1:B:589:ASP:O	6:B:917:HOH:O	2.22	0.42
1:A:566:TYR:CE2	1:A:568:SER:HB3	2.55	0.42
1:B:593:VAL:HA	1:B:594:PRO:HD3	1.86	0.42
1:A:474:TRP:CD1	1:A:539:LYS:HE2	2.55	0.42
1:B:638:ASN:ND2	6:B:945:HOH:O	2.51	0.42
1:A:463:VAL:CG1	1:A:528:LEU:HD23	2.51	0.41
1:A:548:ILE:HD13	1:A:548:ILE:HA	1.84	0.41
1:A:548:ILE:HG13	1:A:633:LEU:HD12	2.02	0.41
1:A:670:MET:SD	1:A:675:LEU:HD13	2.60	0.41
1:B:579:ARG:HG3	1:B:598:MET:HG2	2.03	0.41
1:B:714:LYS:HB3	1:B:714:LYS:HE2	1.89	0.41
1:A:463:VAL:HG21	1:A:528:LEU:HG	2.02	0.41
1:B:581:PRO:HA	1:B:582:PRO:HD2	1.89	0.40
1:B:671:ALA:HB1	1:B:673:GLU:OE2	2.20	0.40

There are no symmetry-related clashes.

## 5.3 Torsion angles [i](#)

### 5.3.1 Protein backbone [i](#)

In the following table, the Percentiles column shows the percent Ramachandran outliers of the chain as a percentile score with respect to all X-ray entries followed by that with respect to entries of similar resolution.

The Analysed column shows the number of residues for which the backbone conformation was analysed, and the total number of residues.

Mol	Chain	Analysed	Favoured	Allowed	Outliers	Percentiles	
1	A	300/324 (93%)	293 (98%)	7 (2%)	0	100	100
1	B	307/324 (95%)	303 (99%)	4 (1%)	0	100	100
All	All	607/648 (94%)	596 (98%)	11 (2%)	0	100	100

There are no Ramachandran outliers to report.

### 5.3.2 Protein sidechains [i](#)

In the following table, the Percentiles column shows the percent sidechain outliers of the chain as a percentile score with respect to all X-ray entries followed by that with respect to entries of similar resolution.

The Analysed column shows the number of residues for which the sidechain conformation was analysed, and the total number of residues.

Mol	Chain	Analysed	Rotameric	Outliers	Percentiles	
1	A	260/284 (92%)	257 (99%)	3 (1%)	71	84
1	B	267/284 (94%)	264 (99%)	3 (1%)	73	86
All	All	527/568 (93%)	521 (99%)	6 (1%)	71	86

All (6) residues with a non-rotameric sidechain are listed below:

Mol	Chain	Res	Type
1	A	463	VAL
1	A	512	VAL
1	A	675	LEU
1	B	512	VAL
1	B	592	ARG
1	B	675	LEU

Sometimes sidechains can be flipped to improve hydrogen bonding and reduce clashes. All (1) such sidechains are listed below:

Mol	Chain	Res	Type
1	A	597	GLN

### 5.3.3 RNA [i](#)

There are no RNA molecules in this entry.

## 5.4 Non-standard residues in protein, DNA, RNA chains [i](#)

There are no non-standard protein/DNA/RNA residues in this entry.

## 5.5 Carbohydrates [i](#)

There are no monosaccharides in this entry.

## 5.6 Ligand geometry

Of 7 ligands modelled in this entry, 1 is monoatomic - leaving 6 for Mogul analysis.

In the following table, the Counts columns list the number of bonds (or angles) for which Mogul statistics could be retrieved, the number of bonds (or angles) that are observed in the model and the number of bonds (or angles) that are defined in the Chemical Component Dictionary. The Link column lists molecule types, if any, to which the group is linked. The Z score for a bond length (or angle) is the number of standard deviations the observed value is removed from the expected value. A bond length (or angle) with  $|Z| > 2$  is considered an outlier worth inspection. RMSZ is the root-mean-square of all Z scores of the bond lengths (or angles).

Mol	Type	Chain	Res	Link	Bond lengths			Bond angles		
					Counts	RMSZ	# Z  > 2	Counts	RMSZ	# Z  > 2
2	SO4	B	801	-	4,4,4	0.17	0	6,6,6	0.24	0
4	ACP	B	803	5	27,33,33	2.00	7 (25%)	32,52,52	1.53	4 (12%)
2	SO4	B	802	-	4,4,4	0.13	0	6,6,6	0.17	0
3	FLC	B	804	-	12,12,12	1.97	3 (25%)	17,17,17	1.54	4 (23%)
2	SO4	A	801	-	4,4,4	0.15	0	6,6,6	0.15	0
3	FLC	A	802	-	12,12,12	1.57	3 (25%)	17,17,17	1.68	4 (23%)

In the following table, the Chirals column lists the number of chiral outliers, the number of chiral centers analysed, the number of these observed in the model and the number defined in the Chemical Component Dictionary. Similar counts are reported in the Torsion and Rings columns. '-' means no outliers of that kind were identified.

Mol	Type	Chain	Res	Link	Chirals	Torsions	Rings
4	ACP	B	803	5	-	5/15/38/38	0/3/3/3
3	FLC	A	802	-	-	8/16/16/16	-
3	FLC	B	804	-	-	6/16/16/16	-

All (13) bond length outliers are listed below:

Mol	Chain	Res	Type	Atoms	Z	Observed(Å)	Ideal(Å)
4	B	803	ACP	C2'-C1'	-4.59	1.46	1.53
4	B	803	ACP	C2'-C3'	-4.17	1.41	1.53
4	B	803	ACP	O4'-C1'	4.09	1.46	1.41
4	B	803	ACP	C2-N3	4.02	1.38	1.32
3	B	804	FLC	CA-CB	-3.95	1.48	1.53
3	B	804	FLC	CG-CB	-3.68	1.49	1.53
4	B	803	ACP	C6-N6	3.16	1.45	1.34
4	B	803	ACP	C3'-C4'	-2.88	1.45	1.53
3	A	802	FLC	CA-CB	-2.74	1.50	1.53
3	A	802	FLC	OHB-CB	-2.55	1.38	1.43

*Continued on next page...*



*Continued from previous page...*

Mol	Chain	Res	Type	Atoms	Z	Observed(Å)	Ideal(Å)
3	B	804	FLC	OB1-CBC	2.25	1.29	1.22
3	A	802	FLC	OB1-CBC	2.23	1.29	1.22
4	B	803	ACP	C2-N1	2.13	1.37	1.33

All (12) bond angle outliers are listed below:

Mol	Chain	Res	Type	Atoms	Z	Observed(°)	Ideal(°)
4	B	803	ACP	N3-C2-N1	-5.34	120.33	128.68
3	B	804	FLC	OHB-CB-CBC	3.57	113.87	108.86
3	A	802	FLC	CG-CB-CBC	3.48	117.59	110.11
3	A	802	FLC	OB1-CBC-CB	2.81	126.23	122.25
3	A	802	FLC	OG2-CGC-CG	2.48	122.31	114.35
4	B	803	ACP	C3'-C2'-C1'	2.39	104.58	100.98
3	B	804	FLC	CB-CA-CAC	-2.22	108.43	113.81
3	A	802	FLC	OG2-CGC-OG1	-2.22	117.76	123.30
3	B	804	FLC	OB2-CBC-CB	2.21	116.89	113.05
3	B	804	FLC	CB-CG-CGC	-2.19	108.52	113.81
4	B	803	ACP	C1'-N9-C4	-2.12	122.92	126.64
4	B	803	ACP	PB-O3A-PA	-2.12	125.84	132.56

There are no chirality outliers.

All (19) torsion outliers are listed below:

Mol	Chain	Res	Type	Atoms
3	A	802	FLC	CG-CB-CBC-OB1
3	A	802	FLC	CG-CB-CBC-OB2
3	A	802	FLC	OHB-CB-CBC-OB1
3	A	802	FLC	OHB-CB-CBC-OB2
3	B	804	FLC	CG-CB-CBC-OB1
3	B	804	FLC	CG-CB-CBC-OB2
3	B	804	FLC	OHB-CB-CBC-OB1
3	B	804	FLC	OHB-CB-CBC-OB2
4	B	803	ACP	PG-C3B-PB-O1B
4	B	803	ACP	PG-C3B-PB-O2B
4	B	803	ACP	PG-C3B-PB-O3A
3	A	802	FLC	CAC-CA-CB-CBC
3	B	804	FLC	CA-CB-CBC-OB1
3	B	804	FLC	CA-CB-CBC-OB2
4	B	803	ACP	PB-C3B-PG-O3G
3	A	802	FLC	CAC-CA-CB-CG
3	A	802	FLC	CB-CA-CAC-OA2
3	A	802	FLC	CB-CA-CAC-OA1

*Continued on next page...*

Continued from previous page...

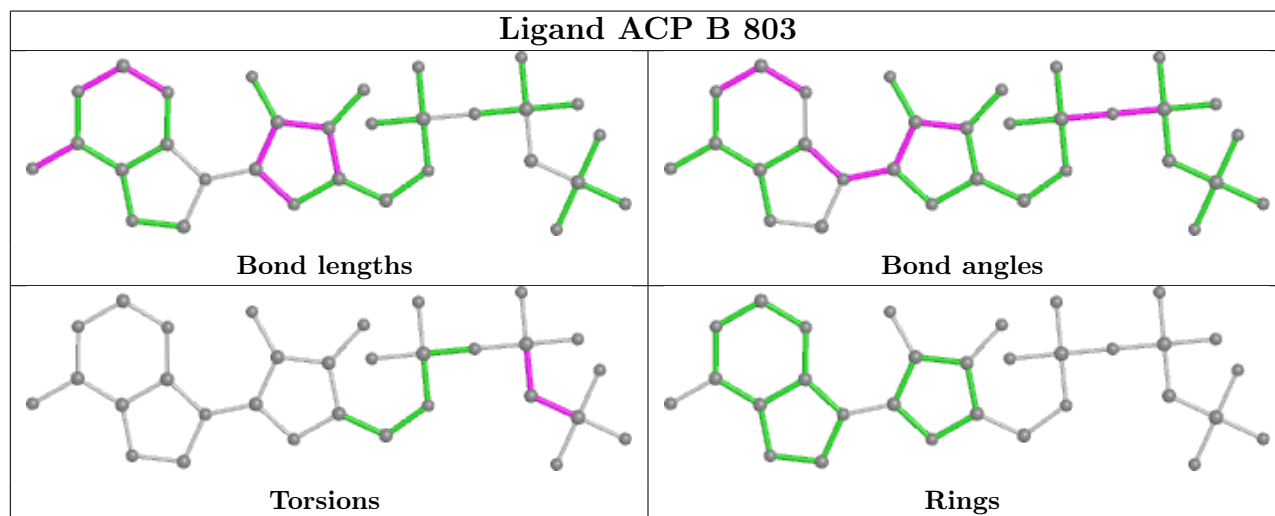
Mol	Chain	Res	Type	Atoms
4	B	803	ACP	PB-C3B-PG-O1G

There are no ring outliers.

4 monomers are involved in 12 short contacts:

Mol	Chain	Res	Type	Clashes	Symm-Clashes
4	B	803	ACP	3	0
2	B	802	SO4	1	0
3	B	804	FLC	5	0
3	A	802	FLC	3	0

The following is a two-dimensional graphical depiction of Mogul quality analysis of bond lengths, bond angles, torsion angles, and ring geometry for all instances of the Ligand of Interest. In addition, ligands with molecular weight > 250 and outliers as shown on the validation Tables will also be included. For torsion angles, if less than 5% of the Mogul distribution of torsion angles is within 10 degrees of the torsion angle in question, then that torsion angle is considered an outlier. Any bond that is central to one or more torsion angles identified as an outlier by Mogul will be highlighted in the graph. For rings, the root-mean-square deviation (RMSD) between the ring in question and similar rings identified by Mogul is calculated over all ring torsion angles. If the average RMSD is greater than 60 degrees and the minimal RMSD between the ring in question and any Mogul-identified rings is also greater than 60 degrees, then that ring is considered an outlier. The outliers are highlighted in purple. The color gray indicates Mogul did not find sufficient equivalents in the CSD to analyse the geometry.



## 5.7 Other polymers [i](#)

There are no such residues in this entry.

## 5.8 Polymer linkage issues

There are no chain breaks in this entry.

## 6 Fit of model and data [i](#)

### 6.1 Protein, DNA and RNA chains [i](#)

In the following table, the column labelled ‘#RSRZ > 2’ contains the number (and percentage) of RSRZ outliers, followed by percent RSRZ outliers for the chain as percentile scores relative to all X-ray entries and entries of similar resolution. The OWAB column contains the minimum, median, 95<sup>th</sup> percentile and maximum values of the occupancy-weighted average B-factor per residue. The column labelled ‘Q < 0.9’ lists the number of (and percentage) of residues with an average occupancy less than 0.9.

Mol	Chain	Analysed	<RSRZ>	#RSRZ>2	OWAB(Å <sup>2</sup> )	Q<0.9
1	A	302/324 (93%)	-0.11	6 (1%) 65 71	21, 37, 64, 97	0
1	B	305/324 (94%)	-0.12	7 (2%) 60 67	18, 32, 64, 112	0
All	All	607/648 (93%)	-0.11	13 (2%) 63 70	18, 35, 66, 112	0

All (13) RSRZ outliers are listed below:

Mol	Chain	Res	Type	RSRZ
1	B	492	PHE	4.9
1	A	506	ASP	3.8
1	B	491	ALA	3.4
1	B	764	THR	3.3
1	B	765	THR	3.2
1	A	503	ILE	2.9
1	B	488	GLY	2.8
1	A	508	PRO	2.7
1	A	504	ASP	2.6
1	A	587	SER	2.5
1	B	489	GLU	2.4
1	B	766	ASN	2.3
1	A	512	VAL	2.1

### 6.2 Non-standard residues in protein, DNA, RNA chains [i](#)

There are no non-standard protein/DNA/RNA residues in this entry.

### 6.3 Carbohydrates [i](#)

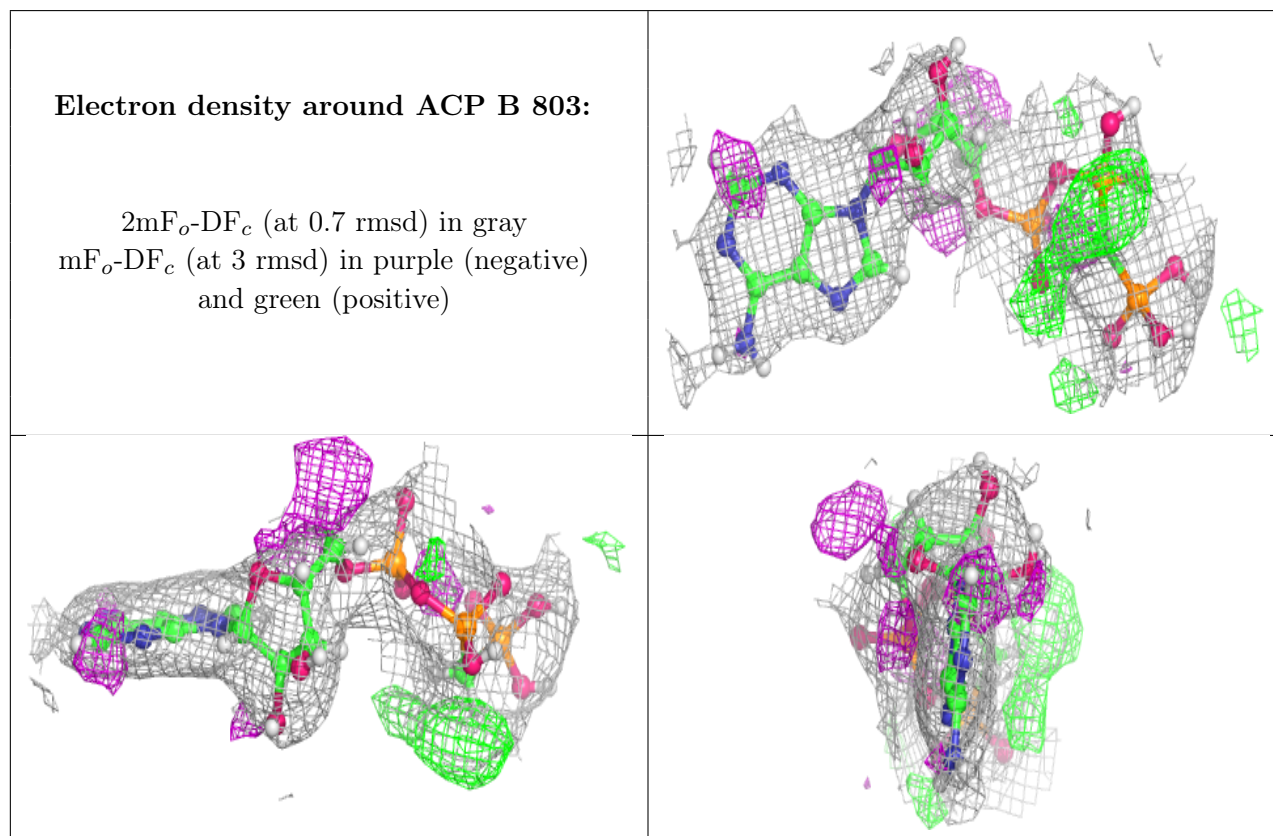
There are no monosaccharides in this entry.

## 6.4 Ligands [i](#)

In the following table, the Atoms column lists the number of modelled atoms in the group and the number defined in the chemical component dictionary. The B-factors column lists the minimum, median, 95<sup>th</sup> percentile and maximum values of B factors of atoms in the group. The column labelled 'Q< 0.9' lists the number of atoms with occupancy less than 0.9.

Mol	Type	Chain	Res	Atoms	RSCC	RSR	B-factors(Å <sup>2</sup> )	Q<0.9
2	SO4	B	802	5/5	0.81	0.22	105,107,108,112	0
3	FLC	B	804	13/13	0.81	0.19	30,80,100,102	0
3	FLC	A	802	13/13	0.84	0.21	53,70,88,88	0
4	ACP	B	803	31/31	0.92	0.15	27,56,121,164	0
5	MG	B	805	1/1	0.92	0.15	60,60,60,60	0
2	SO4	B	801	5/5	0.94	0.15	83,85,88,88	0
2	SO4	A	801	5/5	0.97	0.12	71,74,77,78	0

The following is a graphical depiction of the model fit to experimental electron density of all instances of the Ligand of Interest. In addition, ligands with molecular weight > 250 and outliers as shown on the geometry validation Tables will also be included. Each fit is shown from different orientation to approximate a three-dimensional view.



## 6.5 Other polymers [i](#)

There are no such residues in this entry.