



# Full wwPDB X-ray Structure Validation Report ⓘ

Sep 20, 2023 – 01:37 AM EDT

PDB ID : 5JAB  
Title : Structure of the biliverdin reductase Rv2074 from Mycobacterium tuberculosis in complex with F420  
Authors : Ahmed, F.H.; Carr, P.D.; Jackson, C.J.  
Deposited on : 2016-04-12  
Resolution : 1.65 Å(reported)

This is a Full wwPDB X-ray Structure Validation Report for a publicly released PDB entry.

We welcome your comments at [validation@mail.wwpdb.org](mailto:validation@mail.wwpdb.org)

A user guide is available at

<https://www.wwpdb.org/validation/2017/XrayValidationReportHelp>

with specific help available everywhere you see the ⓘ symbol.

The types of validation reports are described at

<http://www.wwpdb.org/validation/2017/FAQs#types>.

---

The following versions of software and data (see [references ⓘ](#)) were used in the production of this report:

MolProbity : 4.02b-467  
Mogul : 1.8.5 (274361), CSD as541be (2020)  
Xtriage (Phenix) : 1.13  
EDS : 2.35.1  
buster-report : 1.1.7 (2018)  
Percentile statistics : 20191225.v01 (using entries in the PDB archive December 25th 2019)  
Refmac : 5.8.0158  
CCP4 : 7.0.044 (Gargrove)  
Ideal geometry (proteins) : Engh & Huber (2001)  
Ideal geometry (DNA, RNA) : Parkinson et al. (1996)  
Validation Pipeline (wwPDB-VP) : 2.35.1

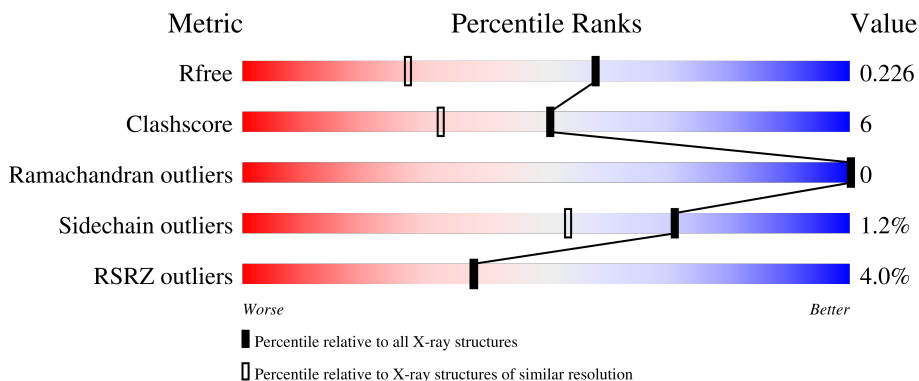
# 1 Overall quality at a glance

The following experimental techniques were used to determine the structure:

*X-RAY DIFFRACTION*

The reported resolution of this entry is 1.65 Å.

Percentile scores (ranging between 0-100) for global validation metrics of the entry are shown in the following graphic. The table shows the number of entries on which the scores are based.



Metric	Whole archive (#Entries)	Similar resolution (#Entries, resolution range(Å))
$R_{free}$	130704	1827 (1.66-1.66)
Clashscore	141614	1931 (1.66-1.66)
Ramachandran outliers	138981	1891 (1.66-1.66)
Sidechain outliers	138945	1891 (1.66-1.66)
RSRZ outliers	127900	1791 (1.66-1.66)

The table below summarises the geometric issues observed across the polymeric chains and their fit to the electron density. The red, orange, yellow and green segments of the lower bar indicate the fraction of residues that contain outliers for  $\geq 3$ , 2, 1 and 0 types of geometric quality criteria respectively. A grey segment represents the fraction of residues that are not modelled. The numeric value for each fraction is indicated below the corresponding segment, with a dot representing fractions  $\leq 5\%$ . The upper red bar (where present) indicates the fraction of residues that have poor fit to the electron density. The numeric value is given above the bar.

Mol	Chain	Length	Quality of chain
1	A	135	 4% 89% 10%
1	B	135	 % 85% 7% 6%
1	C	135	 3% 82% 11% 6%
1	D	135	 7% 91% 7%

## 2 Entry composition [i](#)

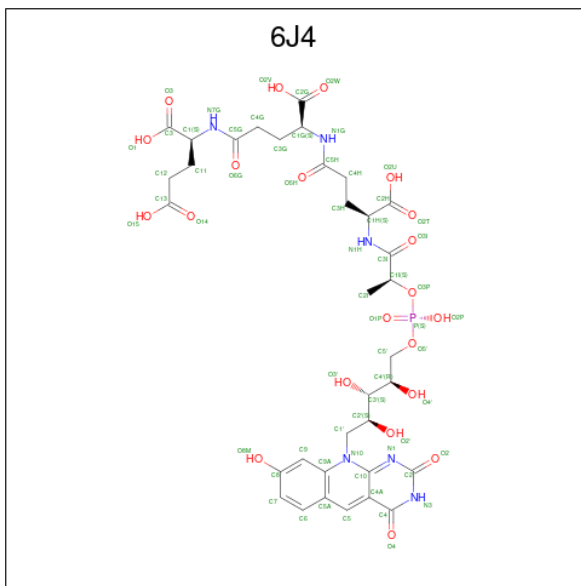
There are 4 unique types of molecules in this entry. The entry contains 5032 atoms, of which 0 are hydrogens and 0 are deuteriums.

In the tables below, the ZeroOcc column contains the number of atoms modelled with zero occupancy, the AltConf column contains the number of residues with at least one atom in alternate conformation and the Trace column contains the number of residues modelled with at most 2 atoms.

- Molecule 1 is a protein called Biliverdin reductase Rv2074.

Mol	Chain	Residues	Atoms					ZeroOcc	AltConf	Trace
			Total	C	N	O	S			
1	A	135	Total 1070	C 661	N 203	O 202	S 4	0	5	0
1	B	127	Total 1012	C 628	N 194	O 189	S 1	0	5	0
1	C	127	Total 1006	C 621	N 196	O 188	S 1	0	3	0
1	D	134	Total 1038	C 642	N 197	O 197	S 2	0	2	0

- Molecule 2 is COENZYME F420-3 (three-letter code: 6J4) (formula: C<sub>34</sub>H<sub>43</sub>N<sub>6</sub>O<sub>21</sub>P).



Mol	Chain	Residues	Atoms					ZeroOcc	AltConf
			Total	C	N	O	P		
2	A	1	Total 62	C 34	N 6	O 21	P 1	0	0
2	B	1	Total 62	C 34	N 6	O 21	P 1	0	0

*Continued on next page...*

*Continued from previous page...*

Mol	Chain	Residues	Atoms					ZeroOcc	AltConf
2	C	1	Total	C	N	O	P	0	0
			62	34	6	21	1		
2	D	1	Total	C	N	O	P	0	0
			62	34	6	21	1		

- Molecule 3 is CHLORIDE ION (three-letter code: CL) (formula: Cl).

Mol	Chain	Residues	Atoms		ZeroOcc	AltConf
3	A	1	Total	Cl	0	0
			1	1		
3	B	1	Total	Cl	0	0
			1	1		
3	C	1	Total	Cl	0	0
			1	1		
3	D	1	Total	Cl	0	0
			1	1		

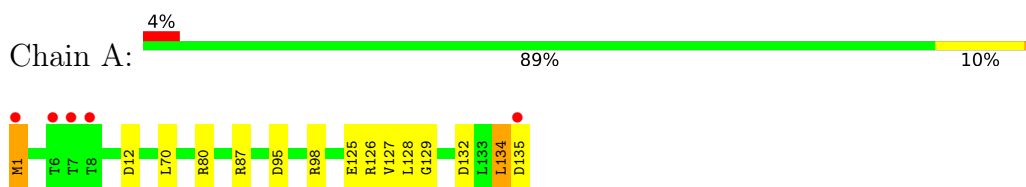
- Molecule 4 is water.

Mol	Chain	Residues	Atoms		ZeroOcc	AltConf
4	A	187	Total	O	0	0
			187	187		
4	B	157	Total	O	0	0
			157	157		
4	C	158	Total	O	0	0
			158	158		
4	D	152	Total	O	0	0
			152	152		

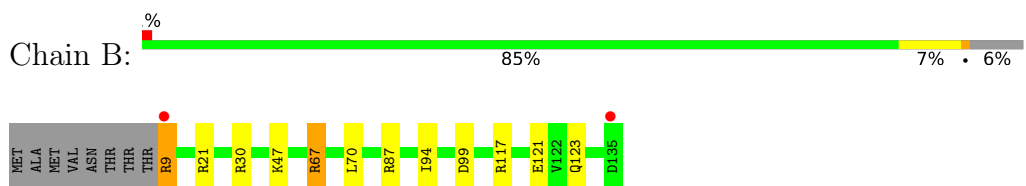
### 3 Residue-property plots [i](#)

These plots are drawn for all protein, RNA, DNA and oligosaccharide chains in the entry. The first graphic for a chain summarises the proportions of the various outlier classes displayed in the second graphic. The second graphic shows the sequence view annotated by issues in geometry and electron density. Residues are color-coded according to the number of geometric quality criteria for which they contain at least one outlier: green = 0, yellow = 1, orange = 2 and red = 3 or more. A red dot above a residue indicates a poor fit to the electron density ( $RSRZ > 2$ ). Stretches of 2 or more consecutive residues without any outlier are shown as a green connector. Residues present in the sample, but not in the model, are shown in grey.

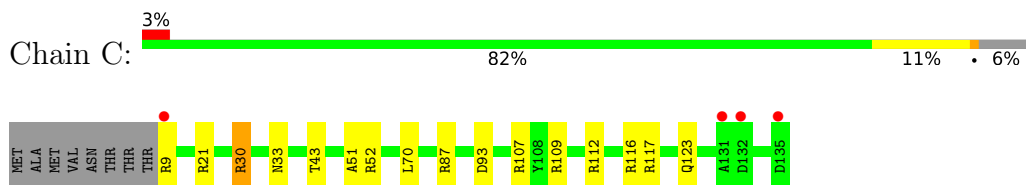
- Molecule 1: Biliverdin reductase Rv2074



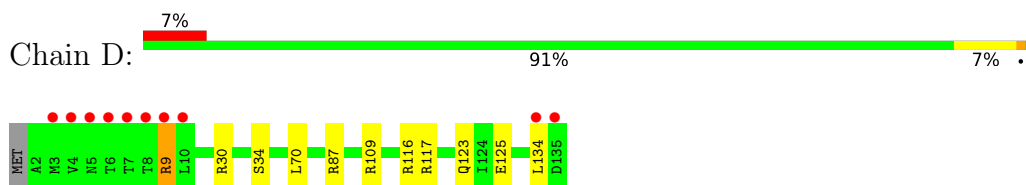
- Molecule 1: Biliverdin reductase Rv2074



- Molecule 1: Biliverdin reductase Rv2074



- Molecule 1: Biliverdin reductase Rv2074



## 4 Data and refinement statistics

Property	Value	Source
Space group	P 2 21 21	Depositor
Cell constants a, b, c, $\alpha$ , $\beta$ , $\gamma$	61.76Å 88.62Å 98.62Å 90.00° 90.00° 90.00°	Depositor
Resolution (Å)	65.92 – 1.65 61.76 – 1.65	Depositor EDS
% Data completeness (in resolution range)	100.0 (65.92-1.65) 100.0 (61.76-1.65)	Depositor EDS
$R_{merge}$	0.18	Depositor
$R_{sym}$	(Not available)	Depositor
$\langle I/\sigma(I) \rangle$ <sup>1</sup>	1.85 (at 1.65Å)	Xtrriage
Refinement program	REFMAC 5.8.0073	Depositor
R, $R_{free}$	0.178 , 0.217 0.190 , 0.226	Depositor DCC
$R_{free}$ test set	3266 reflections (4.96%)	wwPDB-VP
Wilson B-factor (Å <sup>2</sup> )	17.1	Xtrriage
Anisotropy	0.051	Xtrriage
Bulk solvent $k_{sol}$ (e/Å <sup>3</sup> ), $B_{sol}$ (Å <sup>2</sup> )	0.35 , 44.8	EDS
L-test for twinning <sup>2</sup>	$\langle  L  \rangle = 0.49$ , $\langle L^2 \rangle = 0.32$	Xtrriage
Estimated twinning fraction	No twinning to report.	Xtrriage
$F_o, F_c$ correlation	0.96	EDS
Total number of atoms	5032	wwPDB-VP
Average B, all atoms (Å <sup>2</sup> )	21.0	wwPDB-VP

Xtrriage's analysis on translational NCS is as follows: *The largest off-origin peak in the Patterson function is 6.17% of the height of the origin peak. No significant pseudotranslation is detected.*

<sup>1</sup>Intensities estimated from amplitudes.

<sup>2</sup>Theoretical values of  $\langle |L| \rangle$ ,  $\langle L^2 \rangle$  for acentric reflections are 0.5, 0.333 respectively for untwinned datasets, and 0.375, 0.2 for perfectly twinned datasets.

## 5 Model quality [i](#)

### 5.1 Standard geometry [i](#)

Bond lengths and bond angles in the following residue types are not validated in this section: CL, 6J4

The Z score for a bond length (or angle) is the number of standard deviations the observed value is removed from the expected value. A bond length (or angle) with  $|Z| > 5$  is considered an outlier worth inspection. RMSZ is the root-mean-square of all Z scores of the bond lengths (or angles).

Mol	Chain	Bond lengths		Bond angles	
		RMSZ	# Z  >5	RMSZ	# Z  >5
1	A	0.94	0/1092	1.07	5/1480 (0.3%)
1	B	0.92	0/1038	1.10	6/1407 (0.4%)
1	C	0.94	0/1026	1.08	6/1392 (0.4%)
1	D	0.89	0/1058	0.99	3/1438 (0.2%)
All	All	0.92	0/4214	1.06	20/5717 (0.3%)

Chiral center outliers are detected by calculating the chiral volume of a chiral center and verifying if the center is modelled as a planar moiety or with the opposite hand. A planarity outlier is detected by checking planarity of atoms in a peptide group, atoms in a mainchain group or atoms of a sidechain that are expected to be planar.

Mol	Chain	#Chirality outliers	#Planarity outliers
1	A	0	2
1	D	0	1
All	All	0	3

There are no bond length outliers.

All (20) bond angle outliers are listed below:

Mol	Chain	Res	Type	Atoms	Z	Observed(°)	Ideal(°)
1	A	98[A]	ARG	NE-CZ-NH1	-7.64	116.48	120.30
1	A	98[B]	ARG	NE-CZ-NH1	-7.64	116.48	120.30
1	C	30	ARG	NE-CZ-NH2	-6.75	116.93	120.30
1	B	99	ASP	CB-CG-OD2	-6.60	112.36	118.30
1	C	87	ARG	NE-CZ-NH2	-6.55	117.02	120.30
1	C	52	ARG	NE-CZ-NH1	6.54	123.57	120.30
1	C	93	ASP	CB-CG-OD1	6.40	124.06	118.30
1	B	67	ARG	NE-CZ-NH1	6.19	123.40	120.30
1	A	95	ASP	CB-CG-OD1	6.13	123.82	118.30
1	C	117	ARG	NE-CZ-NH2	-5.95	117.33	120.30

*Continued on next page...*

*Continued from previous page...*

Mol	Chain	Res	Type	Atoms	Z	Observed(°)	Ideal(°)
1	D	30	ARG	NE-CZ-NH1	-5.91	117.34	120.30
1	A	132	ASP	CB-CG-OD1	5.68	123.41	118.30
1	B	21	ARG	NE-CZ-NH2	5.57	123.08	120.30
1	B	30	ARG	NE-CZ-NH2	-5.47	117.56	120.30
1	C	87	ARG	NE-CZ-NH1	5.32	122.96	120.30
1	B	67	ARG	NE-CZ-NH2	-5.23	117.68	120.30
1	B	117	ARG	NE-CZ-NH2	-5.11	117.74	120.30
1	D	117	ARG	NE-CZ-NH1	5.08	122.84	120.30
1	D	117	ARG	NE-CZ-NH2	-5.06	117.77	120.30
1	A	80	ARG	NE-CZ-NH2	-5.04	117.78	120.30

There are no chirality outliers.

All (3) planarity outliers are listed below:

Mol	Chain	Res	Type	Group
1	A	134	LEU	Peptide
1	D	134	LEU	Peptide

## 5.2 Too-close contacts [i](#)

In the following table, the Non-H and H(model) columns list the number of non-hydrogen atoms and hydrogen atoms in the chain respectively. The H(added) column lists the number of hydrogen atoms added and optimized by MolProbity. The Clashes column lists the number of clashes within the asymmetric unit, whereas Symm-Clashes lists symmetry-related clashes.

Mol	Chain	Non-H	H(model)	H(added)	Clashes	Symm-Clashes
1	A	1070	0	1094	21	0
1	B	1012	0	1036	9	0
1	C	1006	0	1020	11	0
1	D	1038	0	1055	8	0
2	A	62	0	0	0	0
2	B	62	0	0	1	0
2	C	62	0	0	0	0
2	D	62	0	0	0	0
3	A	1	0	0	0	0
3	B	1	0	0	0	0
3	C	1	0	0	0	0
3	D	1	0	0	0	0
4	A	187	0	0	7	1
4	B	157	0	0	7	3
4	C	158	0	0	5	0

*Continued on next page...*



*Continued from previous page...*

Mol	Chain	Non-H	H(model)	H(added)	Clashes	Symm-Clashes
4	D	152	0	0	4	2
All	All	5032	0	4205	49	3

The all-atom clashscore is defined as the number of clashes found per 1000 atoms (including hydrogen atoms). The all-atom clashscore for this structure is 6.

All (49) close contacts within the same asymmetric unit are listed below, sorted by their clash magnitude.

Atom-1	Atom-2	Interatomic distance (Å)	Clash overlap (Å)
1:A:1[B]:MET:HG2	1:A:134:LEU:CD1	1.75	1.15
1:A:1[B]:MET:CG	1:A:134:LEU:HD12	1.90	1.02
1:A:1[B]:MET:HG2	1:A:134:LEU:HD12	0.96	0.93
1:A:87:ARG:NH1	4:A:301:HOH:O	2.07	0.85
1:B:121[A]:GLU:OE2	4:B:301:HOH:O	1.98	0.81
1:B:67:ARG:HD2	4:B:326:HOH:O	1.79	0.80
1:B:47[B]:LYS:CA	1:B:47[B]:LYS:HE2	2.15	0.77
1:C:116[B]:ARG:HH11	1:C:116[B]:ARG:HG2	1.54	0.72
1:C:30:ARG:HG2	4:C:392:HOH:O	1.89	0.71
1:A:1[B]:MET:SD	2:B:201:6J4:O2T	2.50	0.70
1:A:1[B]:MET:HE1	1:A:129:GLY:O	1.93	0.69
1:A:12:ASP:OD1	4:A:302:HOH:O	2.10	0.68
1:C:9:ARG:NH1	4:C:302:HOH:O	2.15	0.67
1:A:1[B]:MET:CE	1:A:129:GLY:O	2.43	0.66
1:A:1[B]:MET:N	1:A:127:VAL:O	2.27	0.66
1:C:116[B]:ARG:HH11	1:C:116[B]:ARG:CG	2.09	0.65
1:A:135[A]:ASP:HB2	4:A:336:HOH:O	1.97	0.63
1:B:47[B]:LYS:HE2	1:B:47[B]:LYS:HA	1.81	0.63
1:C:21:ARG:HG2	1:C:107:ARG:O	2.00	0.62
1:D:9:ARG:NH2	4:D:301:HOH:O	2.34	0.59
1:D:9:ARG:HG2	1:D:9:ARG:O	2.02	0.59
1:D:70:LEU:C	1:D:70:LEU:HD12	2.24	0.58
1:A:1[B]:MET:CE	4:B:362:HOH:O	2.52	0.56
1:D:116:ARG:HD2	4:D:343:HOH:O	2.06	0.55
1:D:109:ARG:NH2	4:D:304:HOH:O	2.39	0.55
1:C:112[B]:ARG:CG	4:C:301:HOH:O	2.55	0.55
1:B:47[B]:LYS:HA	1:B:47[B]:LYS:CE	2.34	0.53
1:C:33:ASN:HB3	4:C:312:HOH:O	2.07	0.53
1:A:125:GLU:HG3	4:A:365:HOH:O	2.10	0.51
1:A:135[A]:ASP:CB	4:A:336:HOH:O	2.57	0.50
1:A:70:LEU:C	1:A:70:LEU:HD12	2.32	0.50
1:B:94:ILE:CD1	4:B:359:HOH:O	2.59	0.49

*Continued on next page...*

Continued from previous page...

Atom-1	Atom-2	Interatomic distance (Å)	Clash overlap (Å)
1:B:9:ARG:HB2	4:B:431:HOH:O	2.12	0.49
1:A:1[A]:MET:HG2	1:A:128:LEU:HD23	1.95	0.48
1:D:87:ARG:NH2	1:D:123:GLN:HG2	2.28	0.48
1:A:125:GLU:CD	4:A:365:HOH:O	2.52	0.48
1:C:43:THR:O	1:C:51:ALA:HA	2.15	0.46
1:D:87:ARG:NH1	1:D:125:GLU:OE2	2.43	0.46
1:A:1[B]:MET:HE3	4:B:364:HOH:O	2.17	0.44
1:A:125:GLU:CG	4:A:365:HOH:O	2.66	0.43
1:A:1[B]:MET:HE2	1:A:129:GLY:O	2.17	0.43
1:A:1[B]:MET:HE3	4:B:362:HOH:O	2.16	0.43
1:D:34:SER:HB2	4:D:425:HOH:O	2.19	0.42
1:B:70:LEU:HD23	1:B:87:ARG:HD3	2.00	0.42
1:C:123:GLN:HG3	4:C:321:HOH:O	2.19	0.42
1:C:116[B]:ARG:CG	1:C:116[B]:ARG:NH1	2.77	0.41
1:C:70:LEU:HD12	1:C:70:LEU:C	2.41	0.41
1:A:1[A]:MET:SD	1:A:126:ARG:NE	2.79	0.40

All (3) symmetry-related close contacts are listed below. The label for Atom-2 includes the symmetry operator and encoded unit-cell translations to be applied.

Atom-1	Atom-2	Interatomic distance (Å)	Clash overlap (Å)
4:A:463:HOH:O	4:B:457:HOH:O[4_694]	2.13	0.07
4:B:427:HOH:O	4:D:386:HOH:O[2_5105]	2.17	0.03
4:B:361:HOH:O	4:D:351:HOH:O[2_5105]	2.18	0.02

## 5.3 Torsion angles [i](#)

### 5.3.1 Protein backbone [i](#)

In the following table, the Percentiles column shows the percent Ramachandran outliers of the chain as a percentile score with respect to all X-ray entries followed by that with respect to entries of similar resolution.

The Analysed column shows the number of residues for which the backbone conformation was analysed, and the total number of residues.

Mol	Chain	Analysed	Favoured	Allowed	Outliers	Percentiles	
1	A	136/135 (101%)	135 (99%)	1 (1%)	0	100	100
1	B	130/135 (96%)	128 (98%)	2 (2%)	0	100	100

Continued on next page...

Continued from previous page...

Mol	Chain	Analysed	Favoured	Allowed	Outliers	Percentiles	
1	C	128/135 (95%)	127 (99%)	1 (1%)	0	100	100
1	D	134/135 (99%)	132 (98%)	2 (2%)	0	100	100
All	All	528/540 (98%)	522 (99%)	6 (1%)	0	100	100

There are no Ramachandran outliers to report.

### 5.3.2 Protein sidechains [i](#)

In the following table, the Percentiles column shows the percent sidechain outliers of the chain as a percentile score with respect to all X-ray entries followed by that with respect to entries of similar resolution.

The Analysed column shows the number of residues for which the sidechain conformation was analysed, and the total number of residues.

Mol	Chain	Analysed	Rotameric	Outliers	Percentiles	
1	A	116/111 (104%)	114 (98%)	2 (2%)	60	39
1	B	109/111 (98%)	107 (98%)	2 (2%)	59	36
1	C	107/111 (96%)	106 (99%)	1 (1%)	78	66
1	D	112/111 (101%)	111 (99%)	1 (1%)	78	66
All	All	444/444 (100%)	438 (99%)	6 (1%)	71	46

All (6) residues with a non-rotameric sidechain are listed below:

Mol	Chain	Res	Type
1	A	1[A]	MET
1	A	1[B]	MET
1	B	9	ARG
1	B	123	GLN
1	C	109	ARG
1	D	9	ARG

Sometimes sidechains can be flipped to improve hydrogen bonding and reduce clashes. All (1) such sidechains are listed below:

Mol	Chain	Res	Type
1	D	106	GLN

### 5.3.3 RNA [i](#)

There are no RNA molecules in this entry.

## 5.4 Non-standard residues in protein, DNA, RNA chains [i](#)

There are no non-standard protein/DNA/RNA residues in this entry.

## 5.5 Carbohydrates [i](#)

There are no monosaccharides in this entry.

## 5.6 Ligand geometry [i](#)

Of 8 ligands modelled in this entry, 4 are monoatomic - leaving 4 for Mogul analysis.

In the following table, the Counts columns list the number of bonds (or angles) for which Mogul statistics could be retrieved, the number of bonds (or angles) that are observed in the model and the number of bonds (or angles) that are defined in the Chemical Component Dictionary. The Link column lists molecule types, if any, to which the group is linked. The Z score for a bond length (or angle) is the number of standard deviations the observed value is removed from the expected value. A bond length (or angle) with  $|Z| > 2$  is considered an outlier worth inspection. RMSZ is the root-mean-square of all Z scores of the bond lengths (or angles).

Mol	Type	Chain	Res	Link	Bond lengths			Bond angles		
					Counts	RMSZ	# Z  > 2	Counts	RMSZ	# Z  > 2
2	6J4	B	201	-	63,64,64	1.26	4 (6%)	85,91,91	1.40	9 (10%)
2	6J4	D	201	-	63,64,64	1.29	8 (12%)	85,91,91	1.64	21 (24%)
2	6J4	A	201	-	63,64,64	1.17	6 (9%)	85,91,91	1.75	20 (23%)
2	6J4	C	201	-	63,64,64	1.08	4 (6%)	85,91,91	1.45	14 (16%)

In the following table, the Chirals column lists the number of chiral outliers, the number of chiral centers analysed, the number of these observed in the model and the number defined in the Chemical Component Dictionary. Similar counts are reported in the Torsion and Rings columns. '-' means no outliers of that kind were identified.

Mol	Type	Chain	Res	Link	Chirals	Torsions	Rings
2	6J4	B	201	-	-	9/66/66/66	0/3/3/3
2	6J4	D	201	-	-	8/66/66/66	0/3/3/3
2	6J4	A	201	-	-	8/66/66/66	0/3/3/3
2	6J4	C	201	-	-	7/66/66/66	0/3/3/3

All (22) bond length outliers are listed below:

Mol	Chain	Res	Type	Atoms	Z	Observed(Å)	Ideal(Å)
2	B	201	6J4	C5A-C9A	5.16	1.49	1.41
2	C	201	6J4	C1'-C2'	-4.10	1.46	1.52
2	D	201	6J4	C1'-C2'	-3.23	1.48	1.52
2	D	201	6J4	C5-C4A	3.05	1.42	1.36
2	A	201	6J4	C5A-C9A	2.93	1.46	1.41
2	B	201	6J4	C5-C4A	2.75	1.41	1.36
2	B	201	6J4	C5A-C5	-2.73	1.38	1.43
2	D	201	6J4	C5A-C9A	2.67	1.45	1.41
2	A	201	6J4	C4A-C4	2.60	1.49	1.45
2	C	201	6J4	C5A-C9A	2.52	1.45	1.41
2	C	201	6J4	C2-N3	-2.50	1.33	1.39
2	D	201	6J4	C1-C3	-2.50	1.46	1.52
2	C	201	6J4	C1'-N10	-2.42	1.42	1.48
2	A	201	6J4	C5-C4A	2.38	1.40	1.36
2	A	201	6J4	C9-C8	-2.37	1.35	1.39
2	D	201	6J4	O3I-C3I	-2.35	1.18	1.23
2	D	201	6J4	O1-C3	-2.27	1.23	1.30
2	D	201	6J4	C2-N3	-2.23	1.33	1.39
2	B	201	6J4	C4-N3	-2.16	1.34	1.38
2	D	201	6J4	C9A-N10	2.15	1.44	1.41
2	A	201	6J4	P-O2P	-2.09	1.45	1.55
2	A	201	6J4	C2-N3	-2.01	1.34	1.39

All (64) bond angle outliers are listed below:

Mol	Chain	Res	Type	Atoms	Z	Observed(°)	Ideal(°)
2	A	201	6J4	C5A-C5-C4A	-5.62	116.67	122.10
2	B	201	6J4	O2-C2-N1	-5.02	113.51	121.83
2	D	201	6J4	O6G-C5G-C4G	-4.76	113.31	122.02
2	A	201	6J4	O4-C4-C4A	-4.18	116.19	125.99
2	C	201	6J4	C5A-C5-C4A	-3.91	118.33	122.10
2	C	201	6J4	O2-C2-N1	-3.86	115.44	121.83
2	D	201	6J4	O5H-C5H-C4H	-3.67	115.31	122.02
2	A	201	6J4	C9A-C5A-C5	3.63	122.62	119.30
2	A	201	6J4	C1'-N10-C9A	3.59	126.50	120.51
2	D	201	6J4	C4-C4A-C10	-3.54	115.63	117.48
2	A	201	6J4	O2-C2-N1	-3.51	116.01	121.83
2	A	201	6J4	O4-C4-N3	3.51	126.84	120.12
2	D	201	6J4	O4-C4-C4A	-3.34	118.16	125.99
2	D	201	6J4	O2P-P-O3P	-3.14	94.40	106.78
2	D	201	6J4	O2-C2-N1	-3.11	116.67	121.83
2	C	201	6J4	O4-C4-C4A	-3.09	118.74	125.99

*Continued on next page...*

*Continued from previous page...*

Mol	Chain	Res	Type	Atoms	Z	Observed(°)	Ideal(°)
2	C	201	6J4	O1-C3-O3	-3.03	117.20	124.09
2	A	201	6J4	O6G-C5G-C4G	-2.90	116.72	122.02
2	D	201	6J4	C3G-C1G-N1G	-2.86	105.09	110.88
2	D	201	6J4	C4G-C5G-N7G	2.86	120.79	115.83
2	C	201	6J4	O5H-C5H-C4H	-2.84	116.83	122.02
2	A	201	6J4	C4-C4A-C10	-2.77	116.03	117.48
2	D	201	6J4	C11-C1-C3	-2.71	103.82	110.35
2	A	201	6J4	C7-C6-C5A	-2.70	118.08	121.74
2	A	201	6J4	C4A-C10-N1	-2.66	120.21	125.29
2	A	201	6J4	C6-C7-C8	2.65	122.78	119.88
2	D	201	6J4	C4A-C10-N1	-2.63	120.26	125.29
2	A	201	6J4	C10-N1-C2	2.61	122.13	116.90
2	A	201	6J4	O2P-P-O5'	2.61	119.87	107.75
2	D	201	6J4	O1-C3-O3	-2.59	118.21	124.09
2	D	201	6J4	C4A-C4-N3	2.59	118.82	114.35
2	B	201	6J4	O6G-C5G-N7G	2.52	127.21	122.95
2	D	201	6J4	O2P-P-O1P	2.49	124.55	112.24
2	C	201	6J4	O6G-C5G-C4G	-2.45	117.53	122.02
2	B	201	6J4	C5A-C9A-N10	-2.45	116.66	118.89
2	D	201	6J4	C4-N3-C2	-2.42	121.17	125.64
2	A	201	6J4	O3P-P-O1P	-2.40	100.47	109.47
2	B	201	6J4	O2P-P-O1P	2.39	124.03	112.24
2	C	201	6J4	O2P-P-O1P	2.38	124.03	112.24
2	C	201	6J4	C3H-C1H-C2H	2.35	116.01	110.35
2	C	201	6J4	O4-C4-N3	2.34	124.60	120.12
2	B	201	6J4	C7-C6-C5A	-2.33	118.58	121.74
2	B	201	6J4	O2'-C2'-C1'	-2.32	104.18	109.80
2	D	201	6J4	C11-C1-N7G	2.31	115.55	110.88
2	C	201	6J4	O3I-C3I-N1H	2.28	127.16	122.93
2	B	201	6J4	C7-C8-C9	2.27	122.67	120.17
2	A	201	6J4	C1I-C3I-N1H	-2.27	111.15	118.28
2	C	201	6J4	N3-C2-N1	2.24	123.79	119.38
2	A	201	6J4	O2P-P-O3P	-2.19	98.15	106.78
2	B	201	6J4	O2-C2-N3	2.19	122.89	118.65
2	C	201	6J4	O4'-C4'-C3'	2.17	114.36	109.10
2	C	201	6J4	O1-C3-C1	2.16	120.58	113.40
2	A	201	6J4	C5'-C4'-C3'	-2.16	108.03	112.20
2	B	201	6J4	O5H-C5H-N1G	2.16	126.59	122.95
2	A	201	6J4	O1-C3-O3	-2.13	119.26	124.09
2	D	201	6J4	N3-C2-N1	2.12	123.54	119.38
2	D	201	6J4	C5'-C4'-C3'	-2.11	108.13	112.20
2	D	201	6J4	O1-C3-C1	2.08	120.33	113.40

*Continued on next page...*

*Continued from previous page...*

Mol	Chain	Res	Type	Atoms	Z	Observed(°)	Ideal(°)
2	D	201	6J4	C4H-C5H-N1G	2.08	119.45	115.83
2	A	201	6J4	C6-C5A-C5	-2.08	118.86	122.98
2	D	201	6J4	O2V-C2G-C1G	2.08	120.33	113.40
2	A	201	6J4	O4'-C4'-C3'	2.07	114.12	109.10
2	D	201	6J4	O2V-C2G-O2W	-2.06	119.41	124.09
2	C	201	6J4	C3H-C1H-N1H	-2.05	106.72	110.88

There are no chirality outliers.

All (32) torsion outliers are listed below:

Mol	Chain	Res	Type	Atoms
2	A	201	6J4	C5'-O5'-P-O1P
2	B	201	6J4	C5'-O5'-P-O3P
2	B	201	6J4	C5'-O5'-P-O1P
2	C	201	6J4	C5'-O5'-P-O1P
2	C	201	6J4	C5'-O5'-P-O2P
2	D	201	6J4	C5'-O5'-P-O3P
2	D	201	6J4	C5'-O5'-P-O1P
2	A	201	6J4	C5'-O5'-P-O3P
2	C	201	6J4	C5'-O5'-P-O3P
2	D	201	6J4	C2'-C3'-C4'-C5'
2	A	201	6J4	O3'-C3'-C4'-O4'
2	B	201	6J4	C2'-C3'-C4'-O4'
2	A	201	6J4	O3'-C3'-C4'-C5'
2	A	201	6J4	C2'-C3'-C4'-O4'
2	C	201	6J4	C2'-C3'-C4'-O4'
2	D	201	6J4	C2'-C3'-C4'-O4'
2	B	201	6J4	C2'-C3'-C4'-C5'
2	C	201	6J4	C2'-C3'-C4'-C5'
2	A	201	6J4	C5'-O5'-P-O2P
2	B	201	6J4	C5'-O5'-P-O2P
2	D	201	6J4	C5'-O5'-P-O2P
2	B	201	6J4	O3'-C3'-C4'-O4'
2	D	201	6J4	O3'-C3'-C4'-C5'
2	A	201	6J4	C11-C12-C13-O14
2	B	201	6J4	C11-C12-C13-O14
2	A	201	6J4	C11-C12-C13-O15
2	C	201	6J4	O3'-C3'-C4'-O4'
2	B	201	6J4	O3'-C3'-C4'-C5'
2	D	201	6J4	C11-C12-C13-O15
2	D	201	6J4	C11-C12-C13-O14
2	C	201	6J4	O3'-C3'-C4'-C5'

*Continued on next page...*

*Continued from previous page...*

Mol	Chain	Res	Type	Atoms
2	B	201	6J4	C11-C12-C13-O15

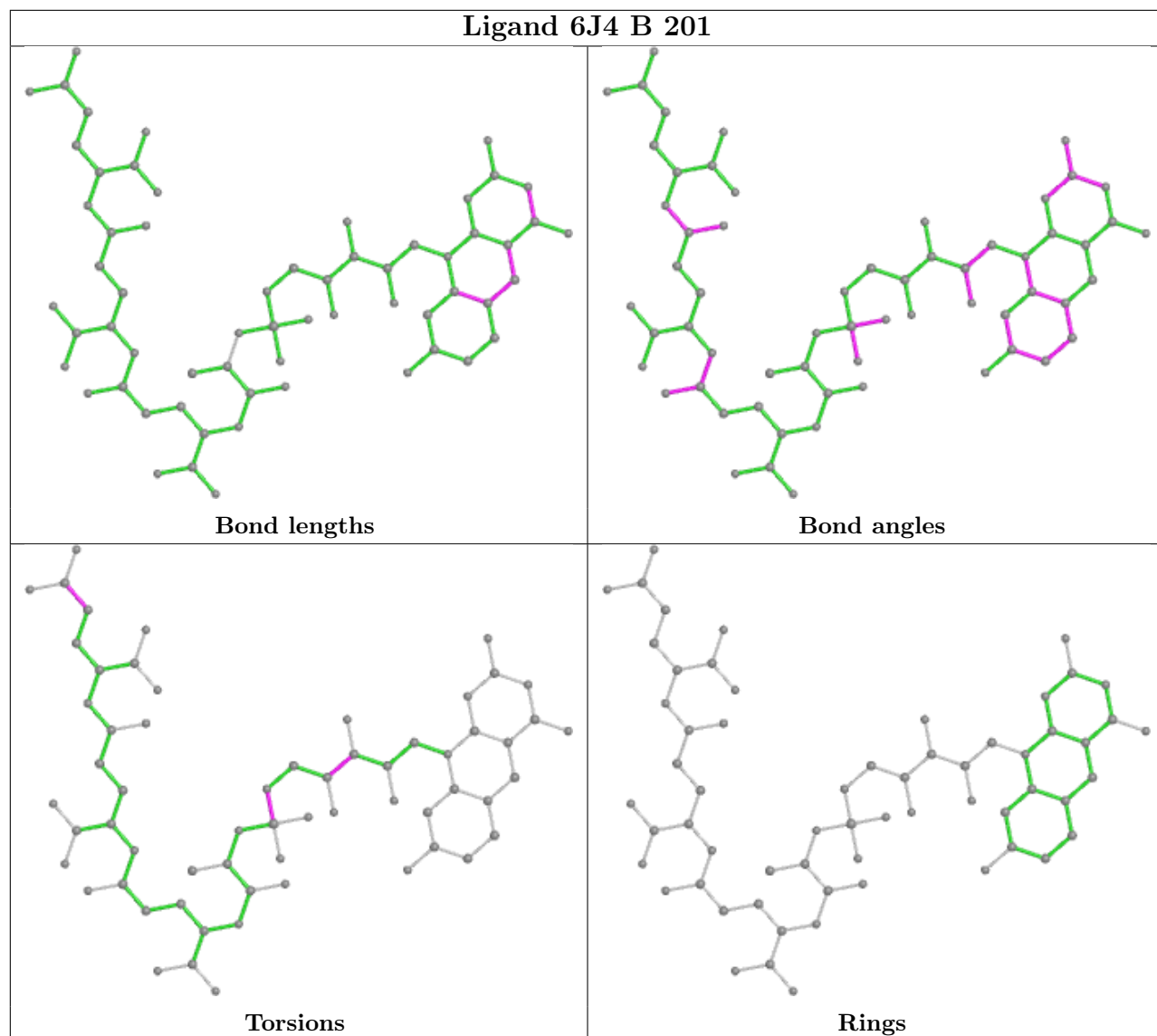
There are no ring outliers.

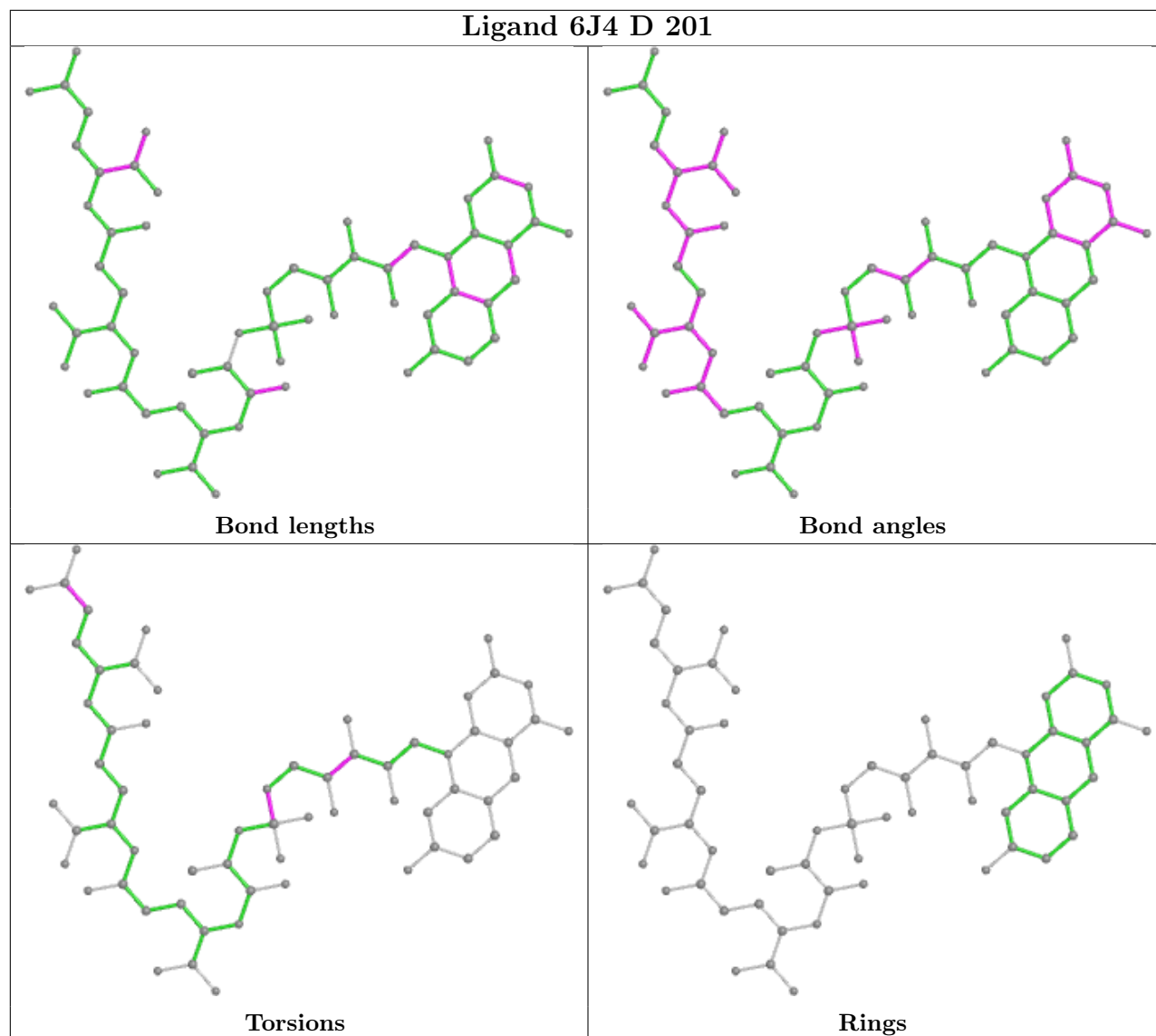
1 monomer is involved in 1 short contact:

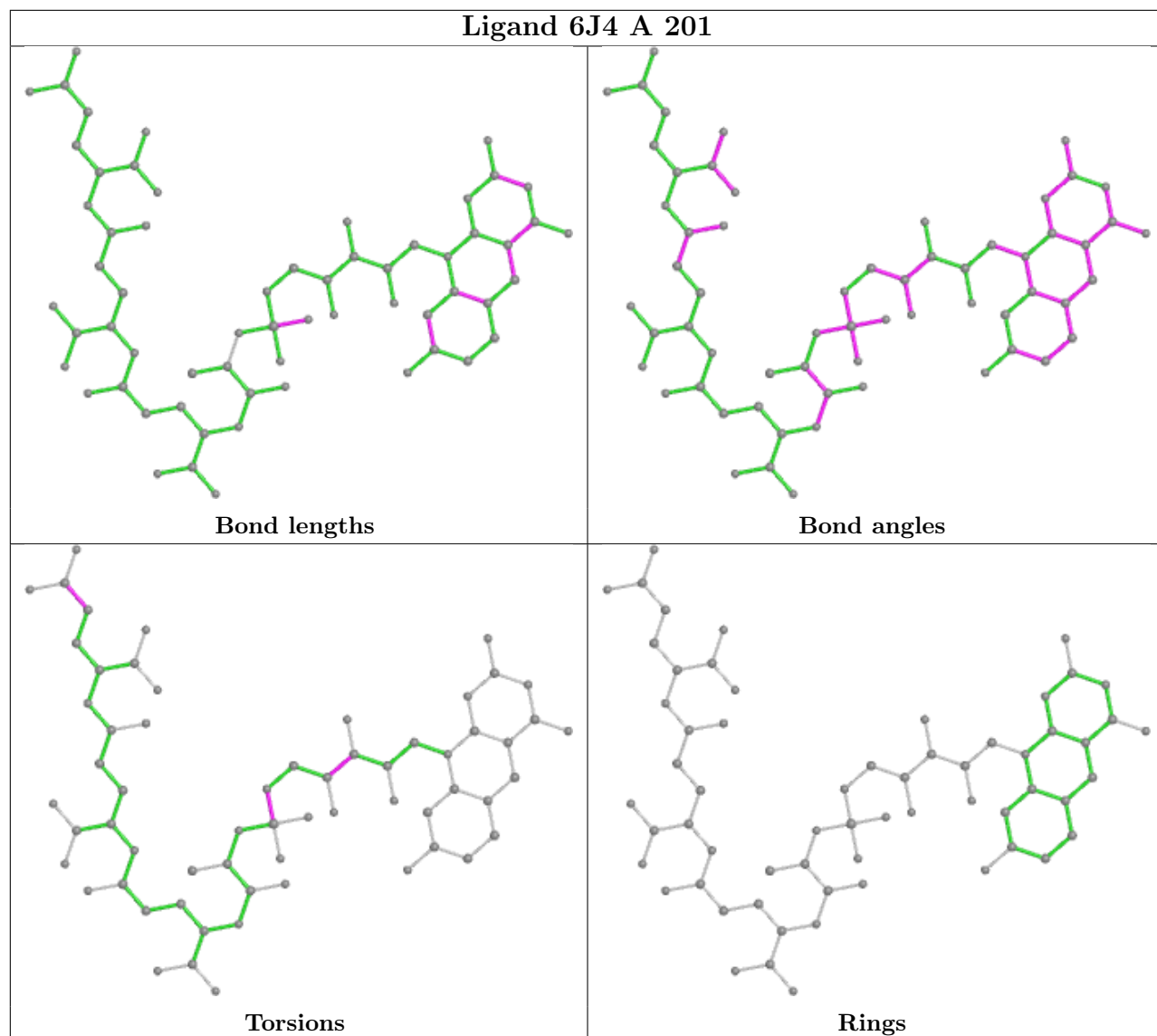
Mol	Chain	Res	Type	Clashes	Symm-Clashes
2	B	201	6J4	1	0

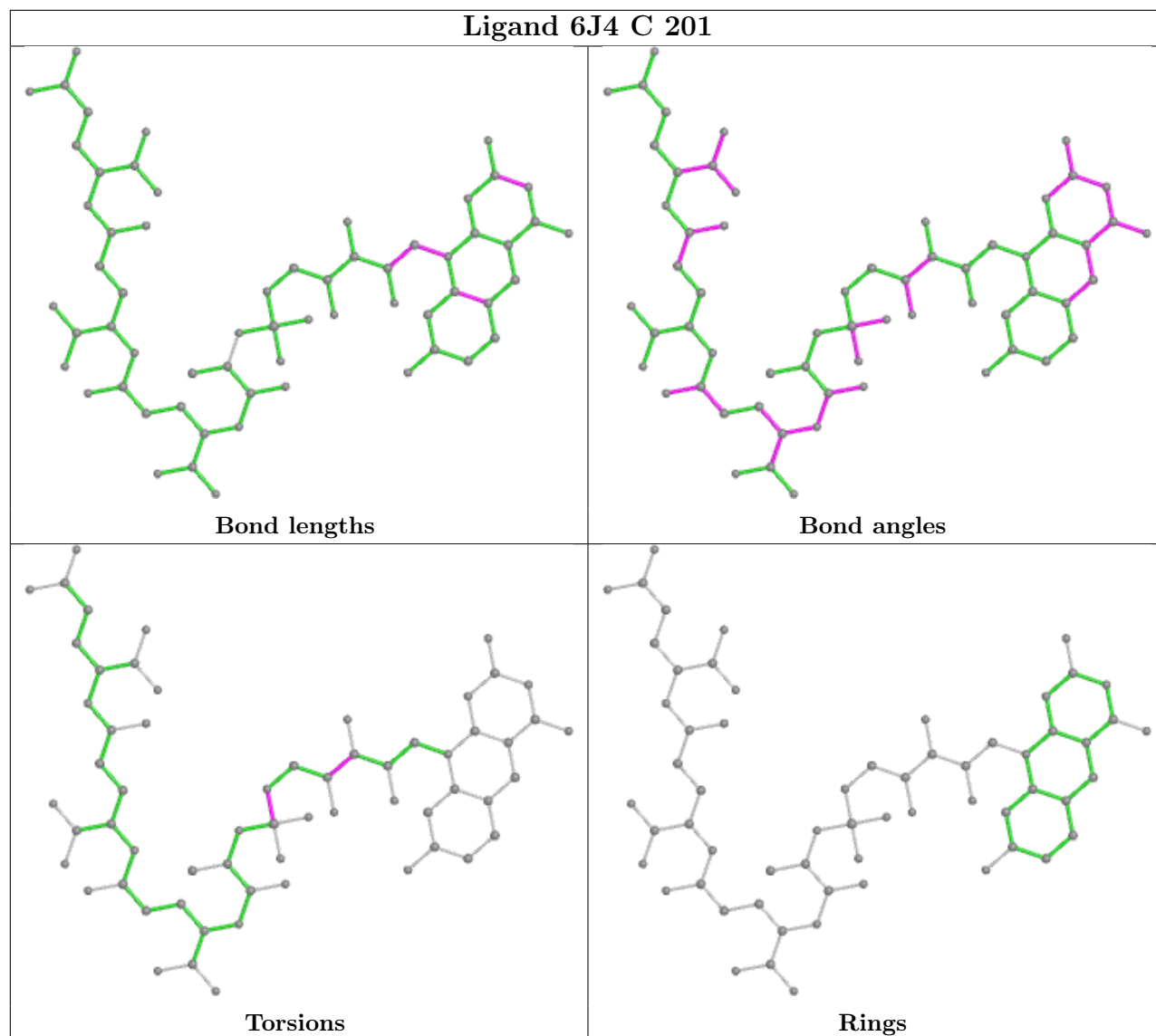
The following is a two-dimensional graphical depiction of Mogul quality analysis of bond lengths, bond angles, torsion angles, and ring geometry for all instances of the Ligand of Interest. In addition, ligands with molecular weight > 250 and outliers as shown on the validation Tables will also be included. For torsion angles, if less than 5% of the Mogul distribution of torsion angles is within 10 degrees of the torsion angle in question, then that torsion angle is considered an outlier. Any bond that is central to one or more torsion angles identified as an outlier by Mogul will be highlighted in the graph. For rings, the root-mean-square deviation (RMSD) between the ring in question and similar rings identified by Mogul is calculated over all ring torsion angles. If the average RMSD is greater than 60 degrees and the minimal RMSD between the ring in question and any Mogul-identified rings is also greater than 60 degrees, then that ring is considered an outlier. The outliers are highlighted in purple. The color gray indicates Mogul did not find sufficient equivalents in the CSD to analyse the geometry.











## 5.7 Other polymers [\(i\)](#)

There are no such residues in this entry.

## 5.8 Polymer linkage issues [\(i\)](#)

There are no chain breaks in this entry.

## 6 Fit of model and data

### 6.1 Protein, DNA and RNA chains

In the following table, the column labelled ‘#RSRZ > 2’ contains the number (and percentage) of RSRZ outliers, followed by percent RSRZ outliers for the chain as percentile scores relative to all X-ray entries and entries of similar resolution. The OWAB column contains the minimum, median, 95<sup>th</sup> percentile and maximum values of the occupancy-weighted average B-factor per residue. The column labelled ‘Q < 0.9’ lists the number of (and percentage) of residues with an average occupancy less than 0.9.

Mol	Chain	Analysed	<RSRZ>	#RSRZ>2	OWAB(Å <sup>2</sup> )	Q<0.9
1	A	135/135 (100%)	0.03	5 (3%) 41 41	9, 15, 34, 49	0
1	B	127/135 (94%)	-0.09	2 (1%) 72 75	8, 15, 32, 53	0
1	C	127/135 (94%)	-0.03	4 (3%) 49 49	11, 18, 35, 63	0
1	D	134/135 (99%)	0.37	10 (7%) 14 14	12, 19, 54, 71	0
All	All	523/540 (96%)	0.08	21 (4%) 38 38	8, 17, 37, 71	0

All (21) RSRZ outliers are listed below:

Mol	Chain	Res	Type	RSRZ
1	D	7	THR	8.7
1	D	8	THR	7.1
1	D	6	THR	6.5
1	D	5	ASN	6.4
1	D	135	ASP	5.9
1	D	3	MET	5.5
1	D	4	VAL	4.9
1	D	9	ARG	4.1
1	A	7	THR	4.0
1	A	1[A]	MET	3.8
1	B	135	ASP	3.5
1	A	135[A]	ASP	3.4
1	B	9	ARG	3.2
1	C	132	ASP	2.6
1	C	9	ARG	2.4
1	C	135	ASP	2.4
1	A	6	THR	2.4
1	C	131	ALA	2.3
1	D	134	LEU	2.2
1	D	10	LEU	2.2
1	A	8	THR	2.0

## 6.2 Non-standard residues in protein, DNA, RNA chains [i](#)

There are no non-standard protein/DNA/RNA residues in this entry.

## 6.3 Carbohydrates [i](#)

There are no monosaccharides in this entry.

## 6.4 Ligands [i](#)

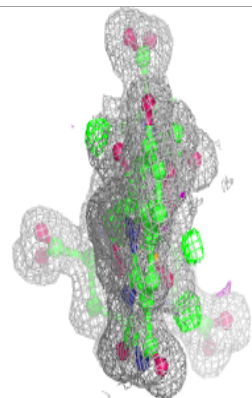
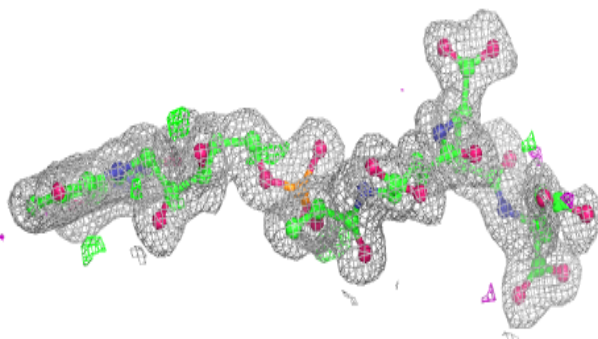
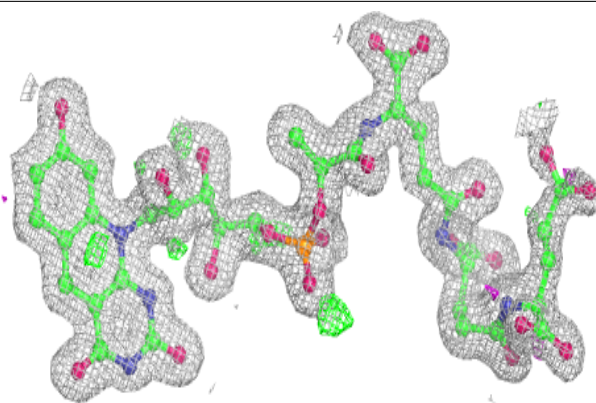
In the following table, the Atoms column lists the number of modelled atoms in the group and the number defined in the chemical component dictionary. The B-factors column lists the minimum, median, 95<sup>th</sup> percentile and maximum values of B factors of atoms in the group. The column labelled 'Q< 0.9' lists the number of atoms with occupancy less than 0.9.

Mol	Type	Chain	Res	Atoms	RSCC	RSR	B-factors(Å <sup>2</sup> )	Q<0.9
2	6J4	A	201	62/62	0.94	0.10	11,17,34,56	0
2	6J4	B	201	62/62	0.94	0.11	9,15,39,63	0
2	6J4	D	201	62/62	0.94	0.10	14,20,37,53	0
2	6J4	C	201	62/62	0.95	0.10	11,16,43,57	0
3	CL	B	202	1/1	0.98	0.06	23,23,23,23	0
3	CL	A	202	1/1	0.99	0.05	21,21,21,21	0
3	CL	C	202	1/1	0.99	0.04	18,18,18,18	0
3	CL	D	202	1/1	0.99	0.04	21,21,21,21	0

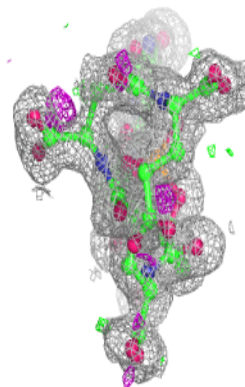
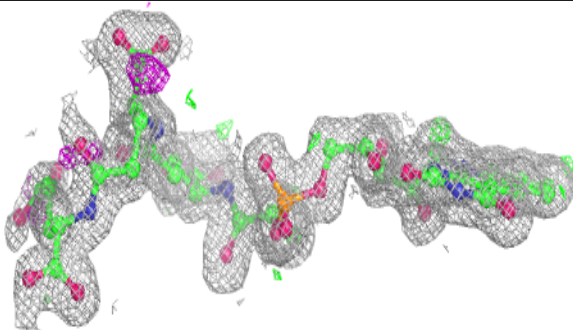
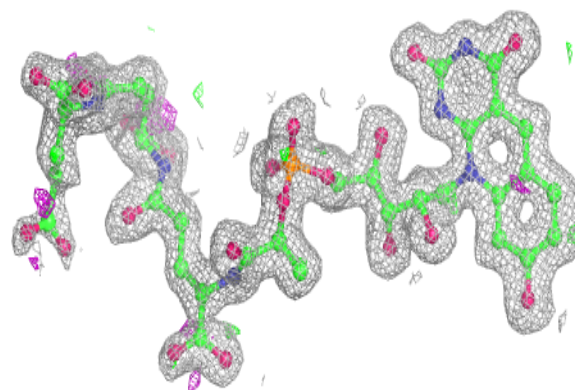
The following is a graphical depiction of the model fit to experimental electron density of all instances of the Ligand of Interest. In addition, ligands with molecular weight > 250 and outliers as shown on the geometry validation Tables will also be included. Each fit is shown from different orientation to approximate a three-dimensional view.

**Electron density around 6J4 A 201:**

$2mF_o-DF_c$  (at 0.7 rmsd) in gray  
 $mF_o-DF_c$  (at 3 rmsd) in purple (negative)  
and green (positive)

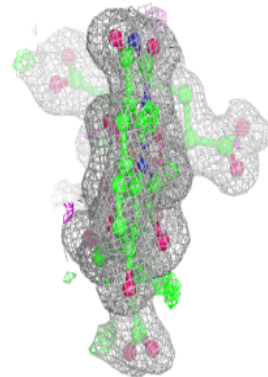
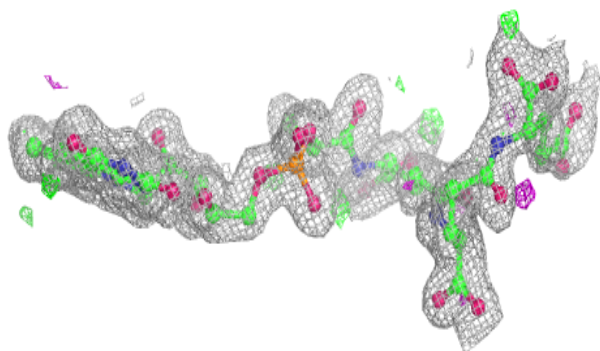
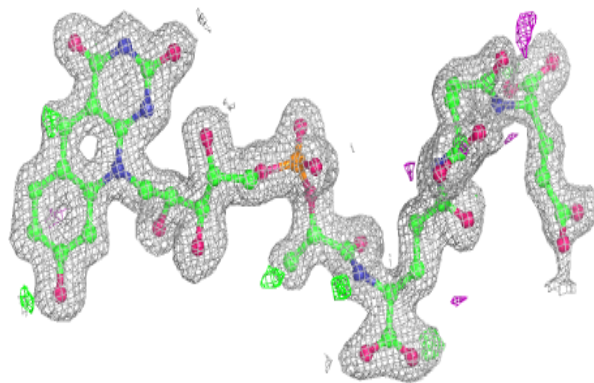
**Electron density around 6J4 B 201:**

$2mF_o-DF_c$  (at 0.7 rmsd) in gray  
 $mF_o-DF_c$  (at 3 rmsd) in purple (negative)  
and green (positive)

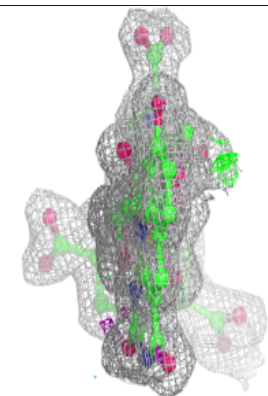
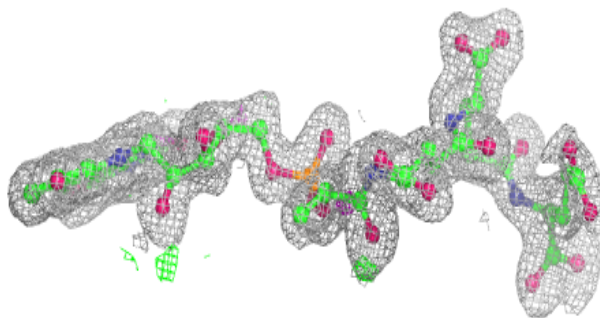
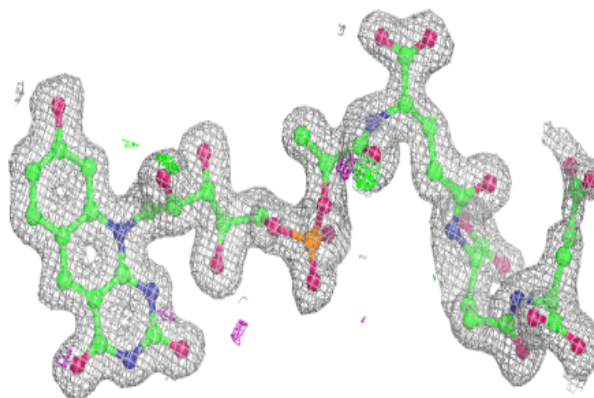


**Electron density around 6J4 D 201:**

$2mF_o-DF_c$  (at 0.7 rmsd) in gray  
 $mF_o-DF_c$  (at 3 rmsd) in purple (negative)  
and green (positive)

**Electron density around 6J4 C 201:**

$2mF_o-DF_c$  (at 0.7 rmsd) in gray  
 $mF_o-DF_c$  (at 3 rmsd) in purple (negative)  
and green (positive)





## 6.5 Other polymers [i](#)

There are no such residues in this entry.