



wwPDB EM Validation Summary Report ⓘ

Feb 13, 2024 – 05:33 PM EST

PDB ID : 3JBH
EMDB ID : EMD-1950
Title : TWO HEAVY MEROMYOSIN INTERACTING-HEADS MOTIFS FLEXIBLE DOCKED INTO TARANTULA THICK FILAMENT 3D-MAP ALLOWS IN DEPTH STUDY OF INTRA- AND INTERMOLECULAR INTERACTIONS
Authors : Alamo, L.; Qi, D.; Wriggers, W.; Pinto, A.; Zhu, J.; Bilbao, A.; Gillilan, R.E.; Hu, S.; Padron, R.
Deposited on : 2015-09-01
Resolution : 20.00 Å (reported)
Based on initial model : 3DTP

This is a wwPDB EM Validation Summary Report for a publicly released PDB entry.

We welcome your comments at validation@mail.wwpdb.org

A user guide is available at

<https://www.wwpdb.org/validation/2017/EMValidationReportHelp>

with specific help available everywhere you see the ⓘ symbol.

The types of validation reports are described at

<http://www.wwpdb.org/validation/2017/FAQs#types>.

The following versions of software and data (see [references ⓘ](#)) were used in the production of this report:

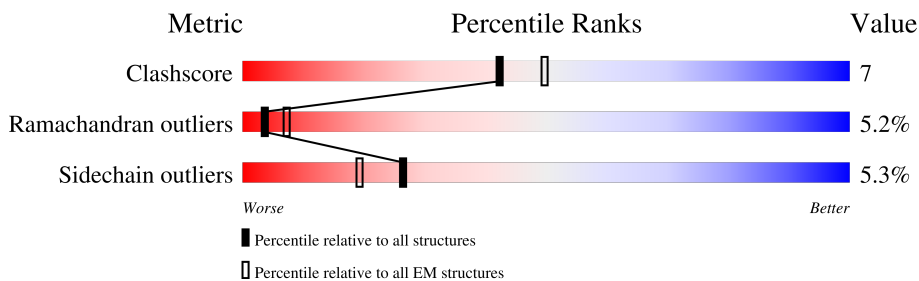
EMDB validation analysis : 0.0.1.dev70
MolProbity : 4.02b-467
Percentile statistics : 20191225.v01 (using entries in the PDB archive December 25th 2019)
MapQ : 1.9.9
Ideal geometry (proteins) : Engh & Huber (2001)
Ideal geometry (DNA, RNA) : Parkinson et al. (1996)
Validation Pipeline (wwPDB-VP) : 2.36

1 Overall quality at a glance

The following experimental techniques were used to determine the structure:
ELECTRON MICROSCOPY

The reported resolution of this entry is 20.00 Å.

Percentile scores (ranging between 0-100) for global validation metrics of the entry are shown in the following graphic. The table shows the number of entries on which the scores are based.






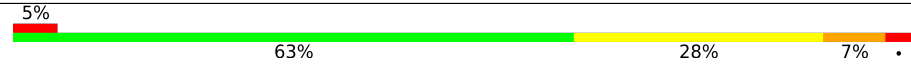
Metric	Whole archive (#Entries)	EM structures (#Entries)
Clashscore	158937	4297
Ramachandran outliers	154571	4023
Sidechain outliers	154315	3826

The table below summarises the geometric issues observed across the polymeric chains and their fit to the map. The red, orange, yellow and green segments of the bar indicate the fraction of residues that contain outliers for ≥ 3 , 2, 1 and 0 types of geometric quality criteria respectively. A grey segment represents the fraction of residues that are not modelled. The numeric value for each fraction is indicated below the corresponding segment, with a dot representing fractions $\leq 5\%$. The upper red bar (where present) indicates the fraction of residues that have poor fit to the EM map (all-atom inclusion $< 40\%$). The numeric value is given above the bar.

Mol	Chain	Length	Quality of chain
1	A	1953	
1	B	1953	
1	G	1953	
1	H	1953	
2	C	156	
2	D	156	
2	I	156	
2	J	156	

Continued on next page...

Continued from previous page...

Mol	Chain	Length	Quality of chain
3	E	196	 <p>73% 24%</p>
3	F	196	 <p>5% 64% 29% 6%</p>
3	K	196	 <p>78% 19%</p>
3	L	196	 <p>5% 63% 28% 7%</p>

2 Entry composition [i](#)

There are 3 unique types of molecules in this entry. The entry contains 41968 atoms, of which 0 are hydrogens and 0 are deuteriums.

In the tables below, the AltConf column contains the number of residues with at least one atom in alternate conformation and the Trace column contains the number of residues modelled with at most 2 atoms.

- Molecule 1 is a protein called MYOSIN 2 HEAVY CHAIN STRIATED MUSCLE.

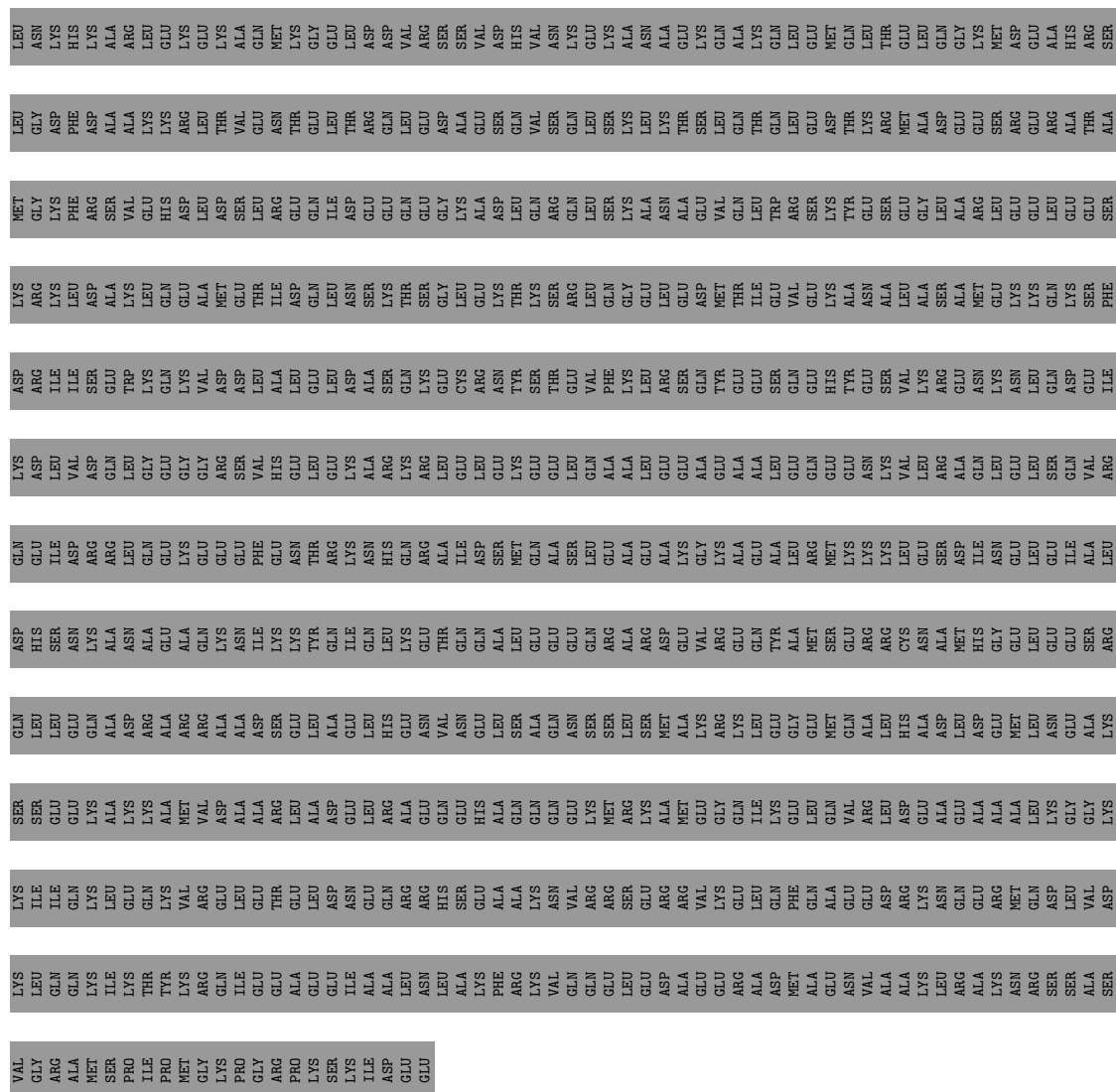
Mol	Chain	Residues	Atoms					AltConf	Trace
			Total	C	N	O	S		
1	A	962	Total 7721	C 4907	N 1334	O 1450	S 30	0	0
1	B	964	Total 7739	C 4918	N 1338	O 1453	S 30	0	0
1	G	962	Total 7721	C 4907	N 1334	O 1450	S 30	0	0
1	H	964	Total 7739	C 4918	N 1338	O 1453	S 30	0	0

- Molecule 2 is a protein called MYOSIN 2 ESSENTIAL LIGHT CHAIN STRIATED MUSCLE.

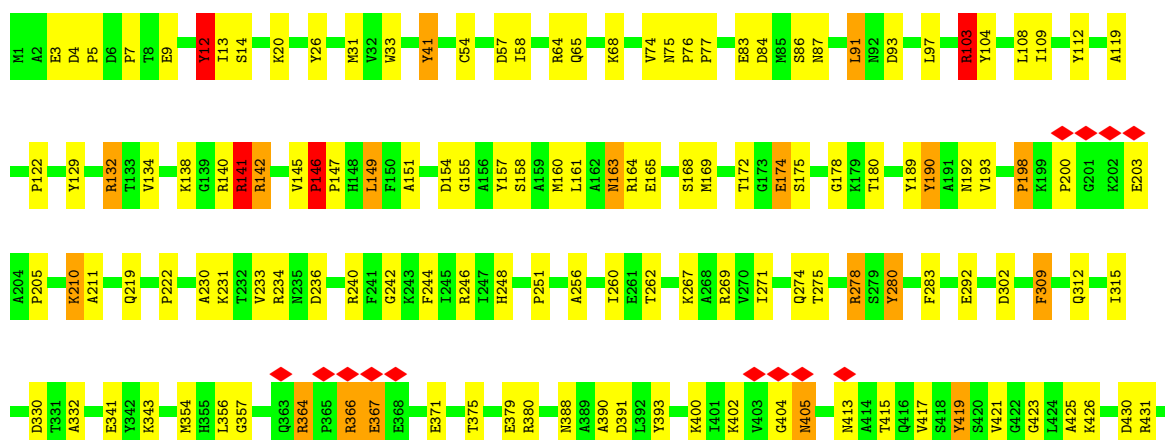
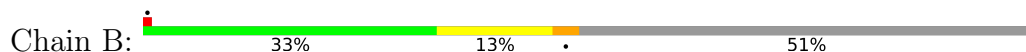
Mol	Chain	Residues	Atoms					AltConf	Trace
			Total	C	N	O	S		
2	C	156	Total 1233	C 779	N 199	O 247	S 8	0	0
2	D	156	Total 1233	C 779	N 199	O 247	S 8	0	0
2	I	156	Total 1233	C 779	N 199	O 247	S 8	0	0
2	J	156	Total 1233	C 779	N 199	O 247	S 8	0	0

- Molecule 3 is a protein called MYOSIN 2 REGULATORY LIGHT CHAIN STRIATED MUSCLE.

Mol	Chain	Residues	Atoms					AltConf	Trace
			Total	C	N	O	S		
3	E	196	Total 1529	C 952	N 257	O 314	S 6	0	0
3	F	196	Total 1529	C 952	N 257	O 314	S 6	0	0
3	K	196	Total 1529	C 952	N 257	O 314	S 6	0	0
3	L	196	Total 1529	C 952	N 257	O 314	S 6	0	0




● Molecule 1: MYOSIN 2 HEAVY CHAIN STRIATED MUSCLE

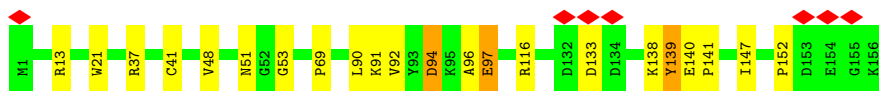


LEU	GLN	GLY	TRP	LYS	VAL	ALA	ARG	ALA	ASP	ASP	ASP	ASP	ASP	ASP	ASP	ASP	ASP	ASP	ASP
GLU	GLY	GLY	LYS	LEU	GLU	THR	LEU	THR	GLU	GLY	GLY	GLY	GLY	GLY	GLY	GLY	GLY	GLY	GLY
LEU	GLY	GLY	GLN	GLY	HIS	THR	GLY	THR	GLY	GLY	GLY	GLY	GLY	GLY	GLY	GLY	GLY	GLY	GLY
LEU	GLY	GLY	GLN	GLY	GLY	THR	GLY	THR	GLY	GLY	GLY	GLY	GLY	GLY	GLY	GLY	GLY	GLY	GLY
LEU	GLY	GLY	GLY	GLY	GLY	THR	GLY	THR	GLY	GLY	GLY	GLY	GLY	GLY	GLY	GLY	GLY	GLY	GLY
LEU	GLY	GLY	GLY	GLY	GLY	THR	GLY	THR	GLY	GLY	GLY	GLY	GLY	GLY	GLY	GLY	GLY	GLY	GLY
LEU	GLY	GLY	GLY	GLY	GLY	THR	GLY	THR	GLY	GLY	GLY	GLY	GLY	GLY	GLY	GLY	GLY	GLY	GLY
LEU	GLY	GLY	GLY	GLY	GLY	THR	GLY	THR	GLY	GLY	GLY	GLY	GLY	GLY	GLY	GLY	GLY	GLY	GLY
LEU	GLY	GLY	GLY	GLY	GLY	THR	GLY	THR	GLY	GLY	GLY	GLY	GLY	GLY	GLY	GLY	GLY	GLY	GLY
LEU	GLY	GLY	GLY	GLY	GLY	THR	GLY	THR	GLY	GLY	GLY	GLY	GLY	GLY	GLY	GLY	GLY	GLY	GLY


LYS	THR	LYS	GLN	ILE	GLU	ALA	GLU	ILE	LEU	ASN	LEU	ALA	LYS	PHE	ARG	LYS	VAL	GLN	GLU	LEU	GLU	ASP	ALA	GLU	ARG	ALA	ASP	MET	ALA	ASN	VAL	ALA	LYS	LEU	ARG	ALA	LYS	ASN	ARG	SER	SER	ALA	SER	VAL	GLY	ARG	ALA	MET	SER						
PRO	ILE	PRO	MET	GLY	LYS	PRO	GLY	PRO	ARG	LYS	PRO	ALA	LYS	SER	ILE	ILE	ASP	GLU	GLU																																				

- Molecule 2: MYOSIN 2 ESSENTIAL LIGHT CHAIN STRIATED MUSCLE

Chain C:  86% 12%




- Molecule 2: MYOSIN 2 ESSENTIAL LIGHT CHAIN STRIATED MUSCLE

Chain D:  83% 15%



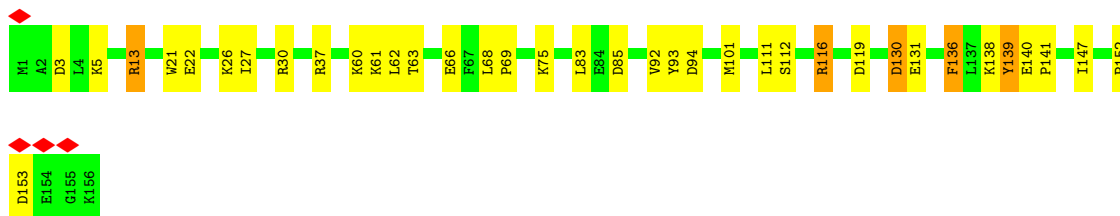
- Molecule 2: MYOSIN 2 ESSENTIAL LIGHT CHAIN STRIATED MUSCLE

Chain I:  83% 15%



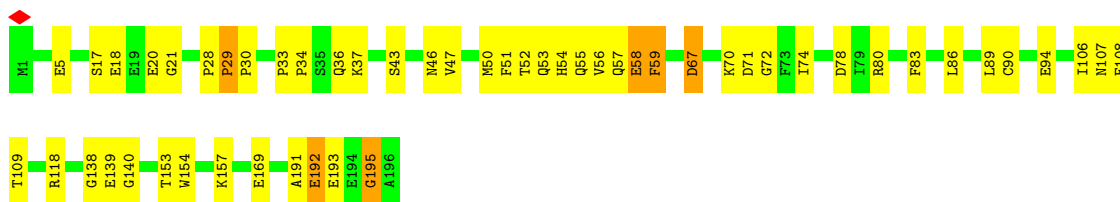
- Molecule 2: MYOSIN 2 ESSENTIAL LIGHT CHAIN STRIATED MUSCLE

Chain J:  76% 21%

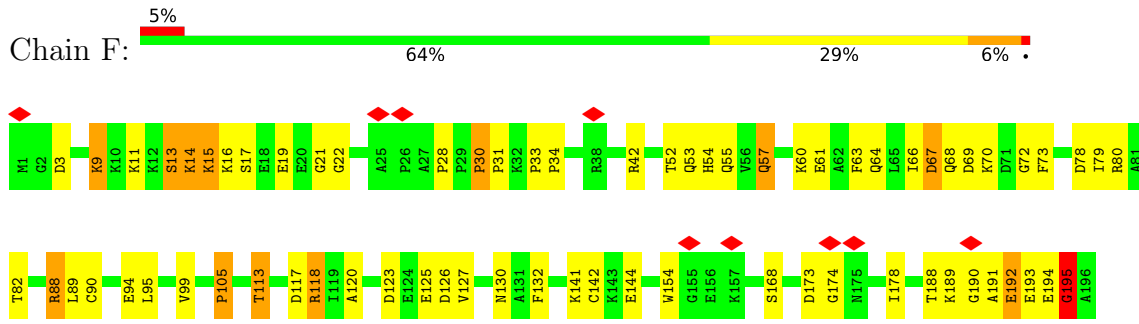


- Molecule 3: MYOSIN 2 REGULATORY LIGHT CHAIN STRIATED MUSCLE

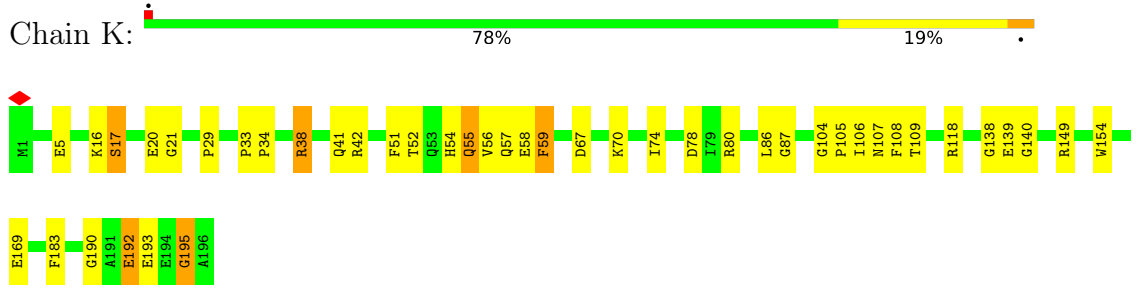
Chain E:  73% 24%



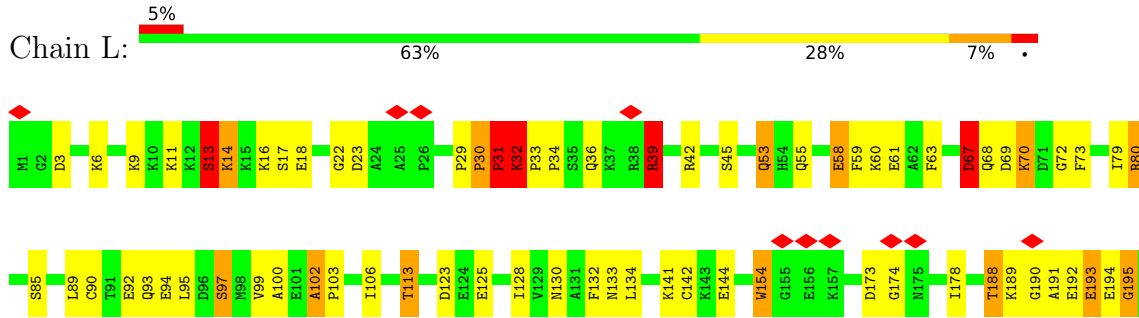
- Molecule 3: MYOSIN 2 REGULATORY LIGHT CHAIN STRIATED MUSCLE



• Molecule 3: MYOSIN 2 REGULATORY LIGHT CHAIN STRIATED MUSCLE



• Molecule 3: MYOSIN 2 REGULATORY LIGHT CHAIN STRIATED MUSCLE



4 Experimental information

Property	Value	Source
EM reconstruction method	HELICAL	Depositor
Imposed symmetry	HELICAL, twist=30°, rise=100 Å, axial sym=C4	Depositor
Number of segments used	Not provided	
Resolution determination method	FSC 0.5 CUT-OFF	Depositor
CTF correction method	Not provided	
Microscope	FEI/PHILIPS CM120T	Depositor
Voltage (kV)	120	Depositor
Electron dose ($e^-/\text{Å}^2$)	Not provided	
Minimum defocus (nm)	1950	Depositor
Maximum defocus (nm)	1950	Depositor
Magnification	35000	Depositor
Image detector	KODAK SO-163 FILM	Depositor
Maximum map value	247.077	Depositor
Minimum map value	-0.037	Depositor
Average map value	10.023	Depositor
Map value standard deviation	28.567	Depositor
Recommended contour level	25.0	Depositor
Map size (Å)	620, 620, 620.5	wwPDB
Map dimensions	250, 250, 250	wwPDB
Map angles (°)	90, 90, 90	wwPDB
Pixel spacing (Å)	2.48, 2.48, 2.482	Depositor

5 Model quality [i](#)

5.1 Standard geometry [i](#)

The Z score for a bond length (or angle) is the number of standard deviations the observed value is removed from the expected value. A bond length (or angle) with $|Z| > 5$ is considered an outlier worth inspection. RMSZ is the root-mean-square of all Z scores of the bond lengths (or angles).

Mol	Chain	Bond lengths		Bond angles	
		RMSZ	# Z >5	RMSZ	# Z >5
1	A	0.65	0/7867	1.36	93/10591 (0.9%)
1	B	0.64	0/7885	1.35	68/10614 (0.6%)
1	G	0.64	0/7867	1.33	75/10591 (0.7%)
1	H	0.64	0/7885	1.34	64/10614 (0.6%)
2	C	0.66	0/1251	1.20	6/1674 (0.4%)
2	D	0.66	0/1251	1.19	8/1674 (0.5%)
2	I	0.64	0/1251	1.21	9/1674 (0.5%)
2	J	0.65	0/1251	1.21	7/1674 (0.4%)
3	E	0.64	0/1554	1.20	10/2081 (0.5%)
3	F	0.64	0/1554	1.30	11/2081 (0.5%)
3	K	0.65	0/1554	1.24	9/2081 (0.4%)
3	L	0.69	0/1554	1.40	17/2081 (0.8%)
All	All	0.65	0/42724	1.32	377/57430 (0.7%)

Chiral center outliers are detected by calculating the chiral volume of a chiral center and verifying if the center is modelled as a planar moiety or with the opposite hand. A planarity outlier is detected by checking planarity of atoms in a peptide group, atoms in a mainchain group or atoms of a sidechain that are expected to be planar.

Mol	Chain	#Chirality outliers	#Planarity outliers
1	A	0	32
1	B	0	20
1	G	0	25
1	H	0	19
2	D	0	1
2	I	0	1
2	J	0	4
3	E	0	1
3	F	0	3
3	K	0	2
3	L	0	8
All	All	0	116

There are no bond length outliers.

The worst 5 of 377 bond angle outliers are listed below:

Mol	Chain	Res	Type	Atoms	Z	Observed(°)	Ideal(°)
1	A	365	PRO	CA-N-CD	-13.39	92.75	111.50
1	B	380	ARG	NE-CZ-NH1	-12.71	113.94	120.30
1	G	140	ARG	NE-CZ-NH1	-10.79	114.91	120.30
1	B	654	ARG	NE-CZ-NH1	-10.67	114.97	120.30
1	G	367	GLU	CA-C-N	10.62	140.56	117.20

There are no chirality outliers.

5 of 116 planarity outliers are listed below:

Mol	Chain	Res	Type	Group
1	A	110	TYR	Sidechain
1	A	142	ARG	Sidechain
1	A	157	TYR	Sidechain
1	A	41	TYR	Sidechain
1	A	64	ARG	Sidechain

5.2 Too-close contacts [i](#)

In the following table, the Non-H and H(model) columns list the number of non-hydrogen atoms and hydrogen atoms in the chain respectively. The H(added) column lists the number of hydrogen atoms added and optimized by MolProbity. The Clashes column lists the number of clashes within the asymmetric unit, whereas Symm-Clashes lists symmetry-related clashes.

Mol	Chain	Non-H	H(model)	H(added)	Clashes	Symm-Clashes
1	A	7721	0	7778	123	0
1	B	7739	0	7799	165	0
1	G	7721	0	7778	108	0
1	H	7739	0	7799	130	0
2	C	1233	0	1227	9	0
2	D	1233	0	1227	9	0
2	I	1233	0	1227	10	0
2	J	1233	0	1227	14	0
3	E	1529	0	1491	27	0
3	F	1529	0	1491	28	0
3	K	1529	0	1491	23	0
3	L	1529	0	1491	47	0
All	All	41968	0	42026	606	0

The all-atom clashscore is defined as the number of clashes found per 1000 atoms (including

hydrogen atoms). The all-atom clashscore for this structure is 7.

The worst 5 of 606 close contacts within the same asymmetric unit are listed below, sorted by their clash magnitude.

Atom-1	Atom-2	Interatomic distance (Å)	Clash overlap (Å)
1:B:641:LYS:HE3	1:B:642:LYS:NZ	1.21	1.52
1:B:641:LYS:CE	1:B:642:LYS:NZ	2.16	1.08
1:A:364:ARG:HA	3:L:31:PRO:HG2	1.42	1.00
1:B:641:LYS:CE	1:B:642:LYS:HZ1	1.70	0.99
1:A:364:ARG:HA	3:L:31:PRO:CG	1.95	0.94

There are no symmetry-related clashes.

5.3 Torsion angles [i](#)

5.3.1 Protein backbone [i](#)

In the following table, the Percentiles column shows the percent Ramachandran outliers of the chain as a percentile score with respect to all PDB entries followed by that with respect to all EM entries.

The Analysed column shows the number of residues for which the backbone conformation was analysed, and the total number of residues.

Mol	Chain	Analysed	Favoured	Allowed	Outliers	Percentiles	
1	A	960/1953 (49%)	772 (80%)	149 (16%)	39 (4%)	3	23
1	B	962/1953 (49%)	779 (81%)	128 (13%)	55 (6%)	1	18
1	G	960/1953 (49%)	783 (82%)	136 (14%)	41 (4%)	2	22
1	H	962/1953 (49%)	779 (81%)	125 (13%)	58 (6%)	1	17
2	C	154/156 (99%)	137 (89%)	13 (8%)	4 (3%)	5	31
2	D	154/156 (99%)	139 (90%)	11 (7%)	4 (3%)	5	31
2	I	154/156 (99%)	135 (88%)	16 (10%)	3 (2%)	8	38
2	J	154/156 (99%)	131 (85%)	19 (12%)	4 (3%)	5	31
3	E	194/196 (99%)	139 (72%)	40 (21%)	15 (8%)	1	13
3	F	194/196 (99%)	136 (70%)	41 (21%)	17 (9%)	1	11
3	K	194/196 (99%)	144 (74%)	37 (19%)	13 (7%)	1	15
3	L	194/196 (99%)	129 (66%)	46 (24%)	19 (10%)	0	10
All	All	5236/9220 (57%)	4203 (80%)	761 (14%)	272 (5%)	4	19

5 of 272 Ramachandran outliers are listed below:

Mol	Chain	Res	Type
1	A	6	ASP
1	A	22	GLN
1	A	138	LYS
1	A	269	ARG
1	A	310	VAL

5.3.2 Protein sidechains [i](#)

In the following table, the Percentiles column shows the percent sidechain outliers of the chain as a percentile score with respect to all PDB entries followed by that with respect to all EM entries.

The Analysed column shows the number of residues for which the sidechain conformation was analysed, and the total number of residues.

Mol	Chain	Analysed	Rotameric	Outliers	Percentiles	
1	A	833/1689 (49%)	792 (95%)	41 (5%)	25	50
1	B	835/1689 (49%)	780 (93%)	55 (7%)	16	41
1	G	833/1689 (49%)	798 (96%)	35 (4%)	30	54
1	H	835/1689 (49%)	785 (94%)	50 (6%)	19	44
2	C	132/132 (100%)	126 (96%)	6 (4%)	27	52
2	D	132/132 (100%)	126 (96%)	6 (4%)	27	52
2	I	132/132 (100%)	127 (96%)	5 (4%)	33	57
2	J	132/132 (100%)	125 (95%)	7 (5%)	22	47
3	E	164/164 (100%)	157 (96%)	7 (4%)	29	53
3	F	164/164 (100%)	150 (92%)	14 (8%)	10	33
3	K	164/164 (100%)	160 (98%)	4 (2%)	49	69
3	L	164/164 (100%)	154 (94%)	10 (6%)	18	44
All	All	4520/7940 (57%)	4280 (95%)	240 (5%)	26	47

5 of 240 residues with a non-rotameric sidechain are listed below:

Mol	Chain	Res	Type
3	F	3	ASP
2	J	94	ASP
1	G	470	PHE
2	J	63	THR

Continued on next page...

Continued from previous page...

Mol	Chain	Res	Type
3	L	97	SER

Sometimes sidechains can be flipped to improve hydrogen bonding and reduce clashes. 5 of 31 such sidechains are listed below:

Mol	Chain	Res	Type
3	F	130	ASN
2	I	51	ASN
1	G	665	HIS
3	K	55	GLN
1	H	546	GLN

5.3.3 RNA [i](#)

There are no RNA molecules in this entry.

5.4 Non-standard residues in protein, DNA, RNA chains [i](#)

There are no non-standard protein/DNA/RNA residues in this entry.

5.5 Carbohydrates [i](#)

There are no monosaccharides in this entry.

5.6 Ligand geometry [i](#)

There are no ligands in this entry.

5.7 Other polymers [i](#)

There are no such residues in this entry.

5.8 Polymer linkage issues [i](#)

There are no chain breaks in this entry.

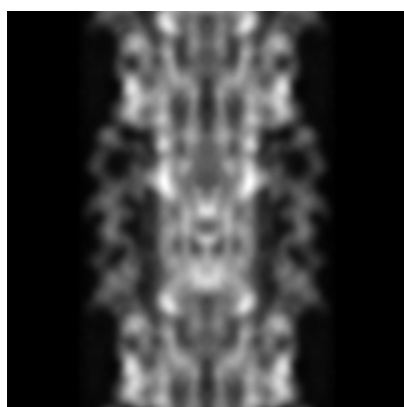
6 Map visualisation [i](#)

This section contains visualisations of the EMDB entry EMD-1950. These allow visual inspection of the internal detail of the map and identification of artifacts.

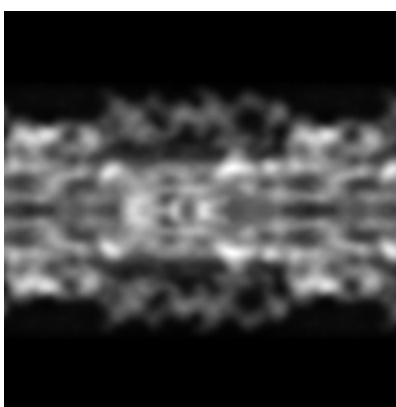
No raw map or half-maps were deposited for this entry and therefore no images, graphs, etc. pertaining to the raw map can be shown.

6.1 Orthogonal projections [i](#)

6.1.1 Primary map



X



Y

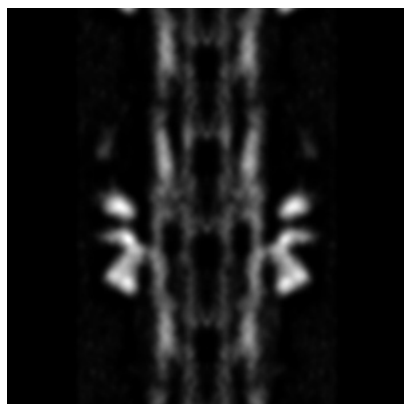


Z

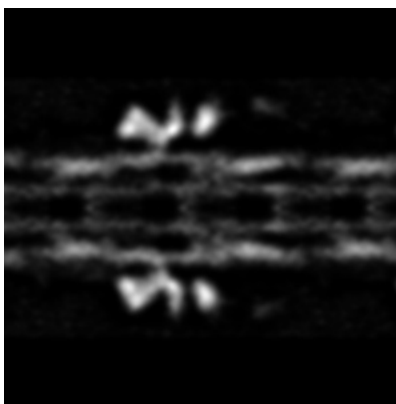
The images above show the map projected in three orthogonal directions.

6.2 Central slices [i](#)

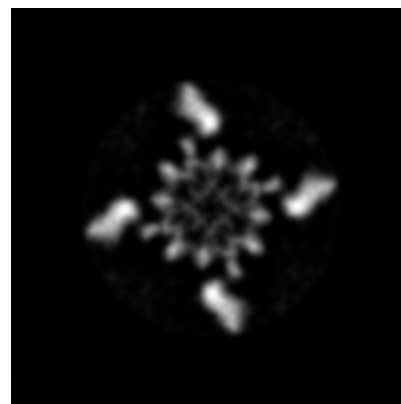
6.2.1 Primary map



X Index: 125



Y Index: 125

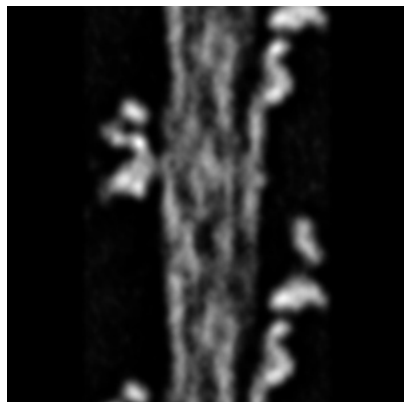


Z Index: 125

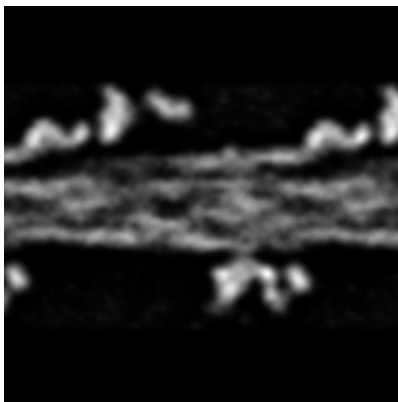
The images above show central slices of the map in three orthogonal directions.

6.3 Largest variance slices [\(i\)](#)

6.3.1 Primary map



X Index: 150



Y Index: 99

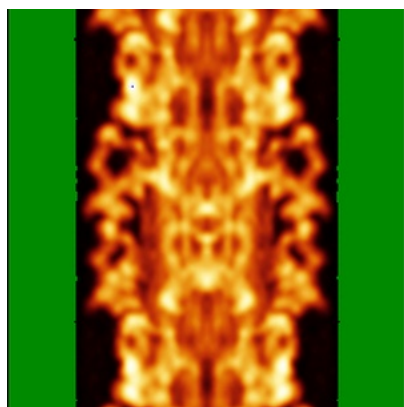


Z Index: 200

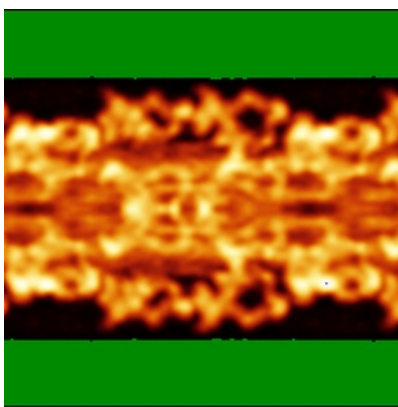
The images above show the largest variance slices of the map in three orthogonal directions.

6.4 Orthogonal standard-deviation projections (False-color) [\(i\)](#)

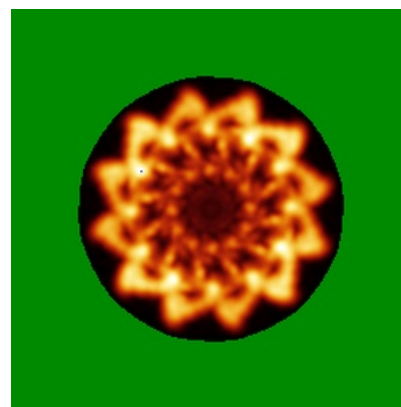
6.4.1 Primary map



X



Y

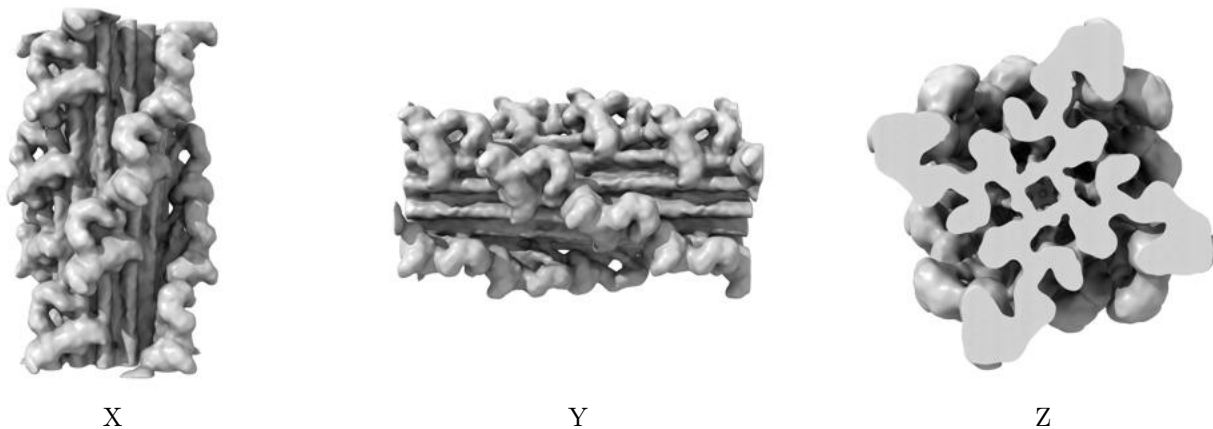


Z

The images above show the map standard deviation projections with false color in three orthogonal directions. Minimum values are shown in green, max in blue, and dark to light orange shades represent small to large values respectively.

6.5 Orthogonal surface views [i](#)

6.5.1 Primary map



The images above show the 3D surface view of the map at the recommended contour level 25.0. These images, in conjunction with the slice images, may facilitate assessment of whether an appropriate contour level has been provided.

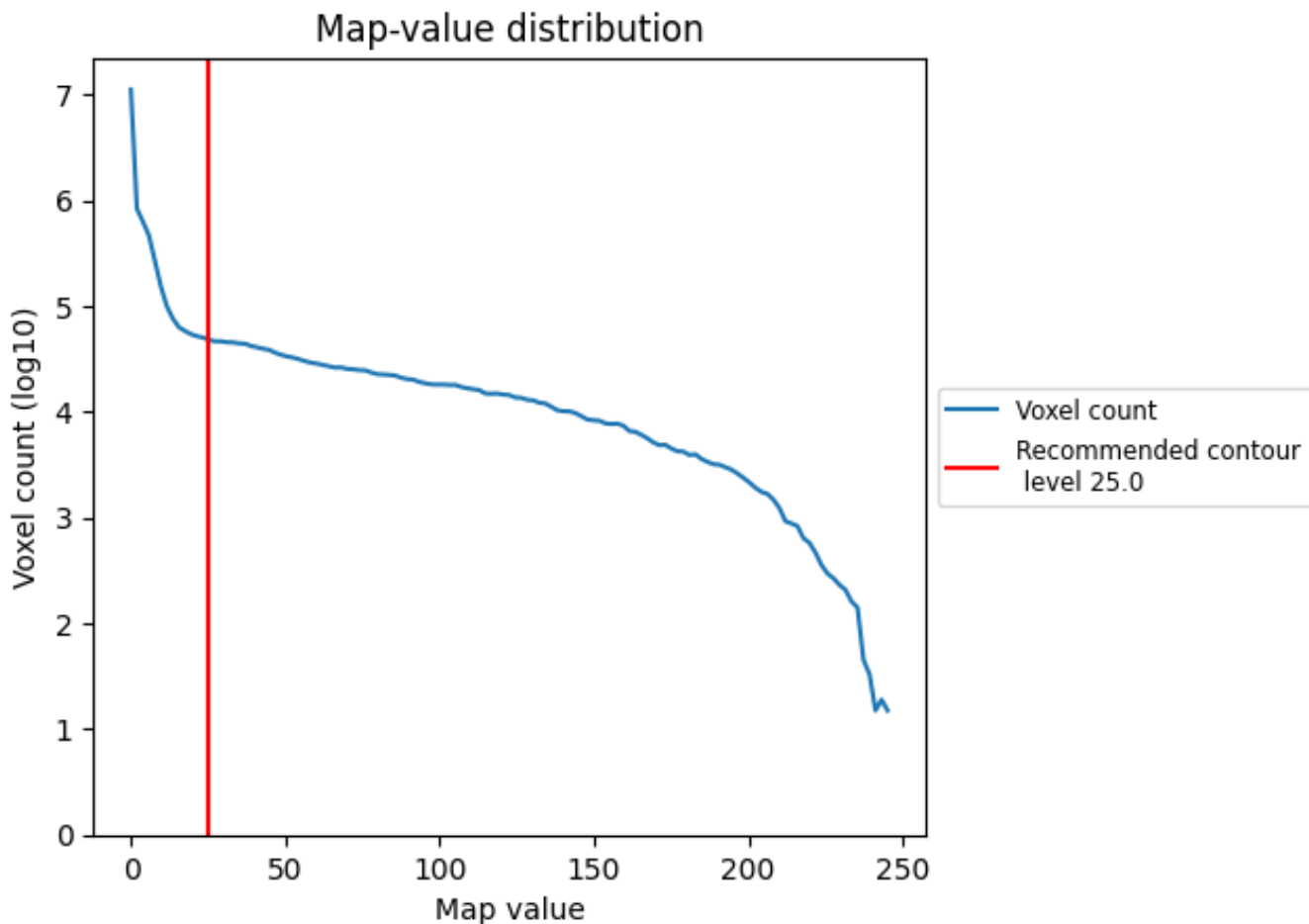
6.6 Mask visualisation [i](#)

This section was not generated. No masks/segmentation were deposited.

7 Map analysis [i](#)

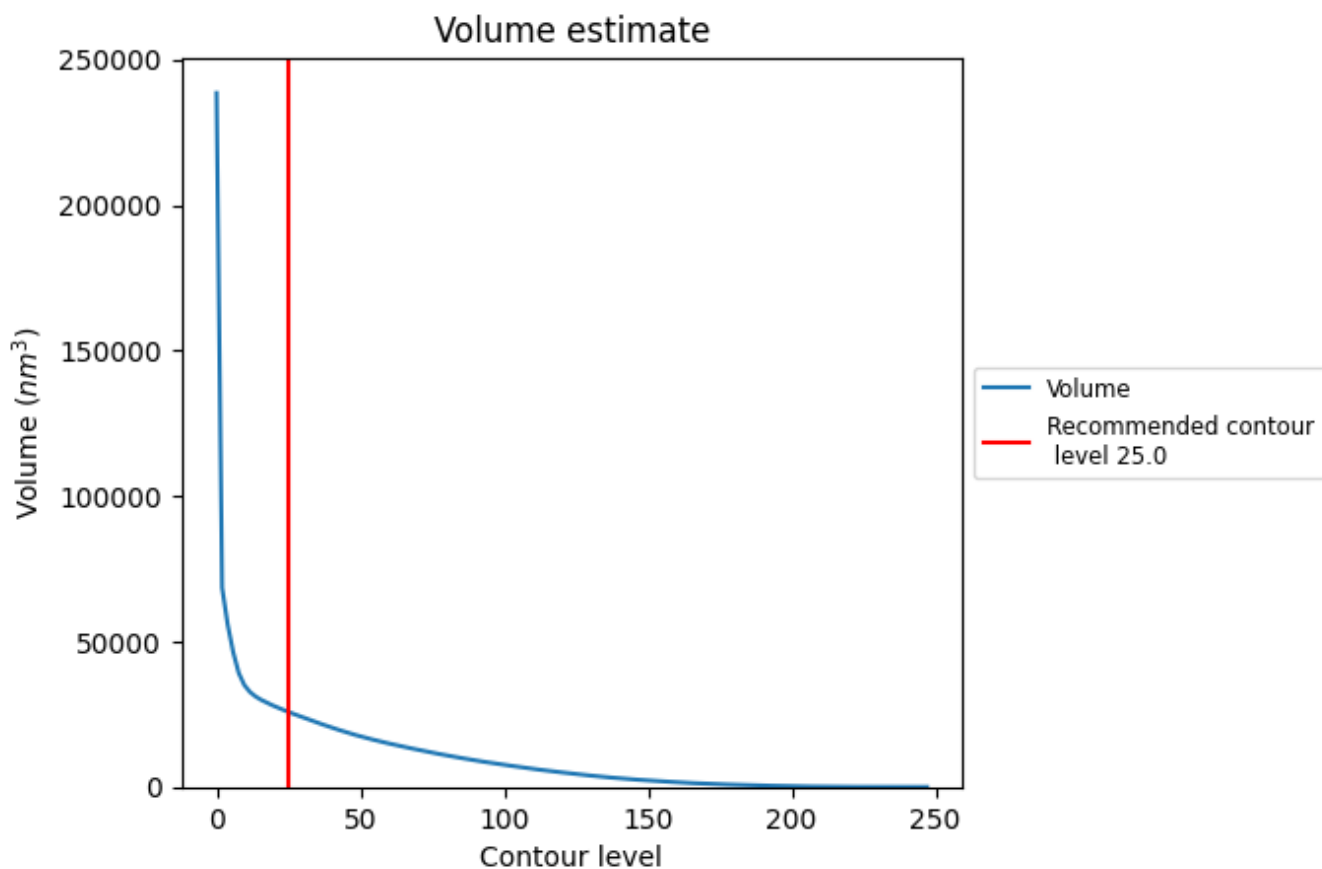
This section contains the results of statistical analysis of the map.

7.1 Map-value distribution [i](#)



The map-value distribution is plotted in 128 intervals along the x-axis. The y-axis is logarithmic. A spike in this graph at zero usually indicates that the volume has been masked.

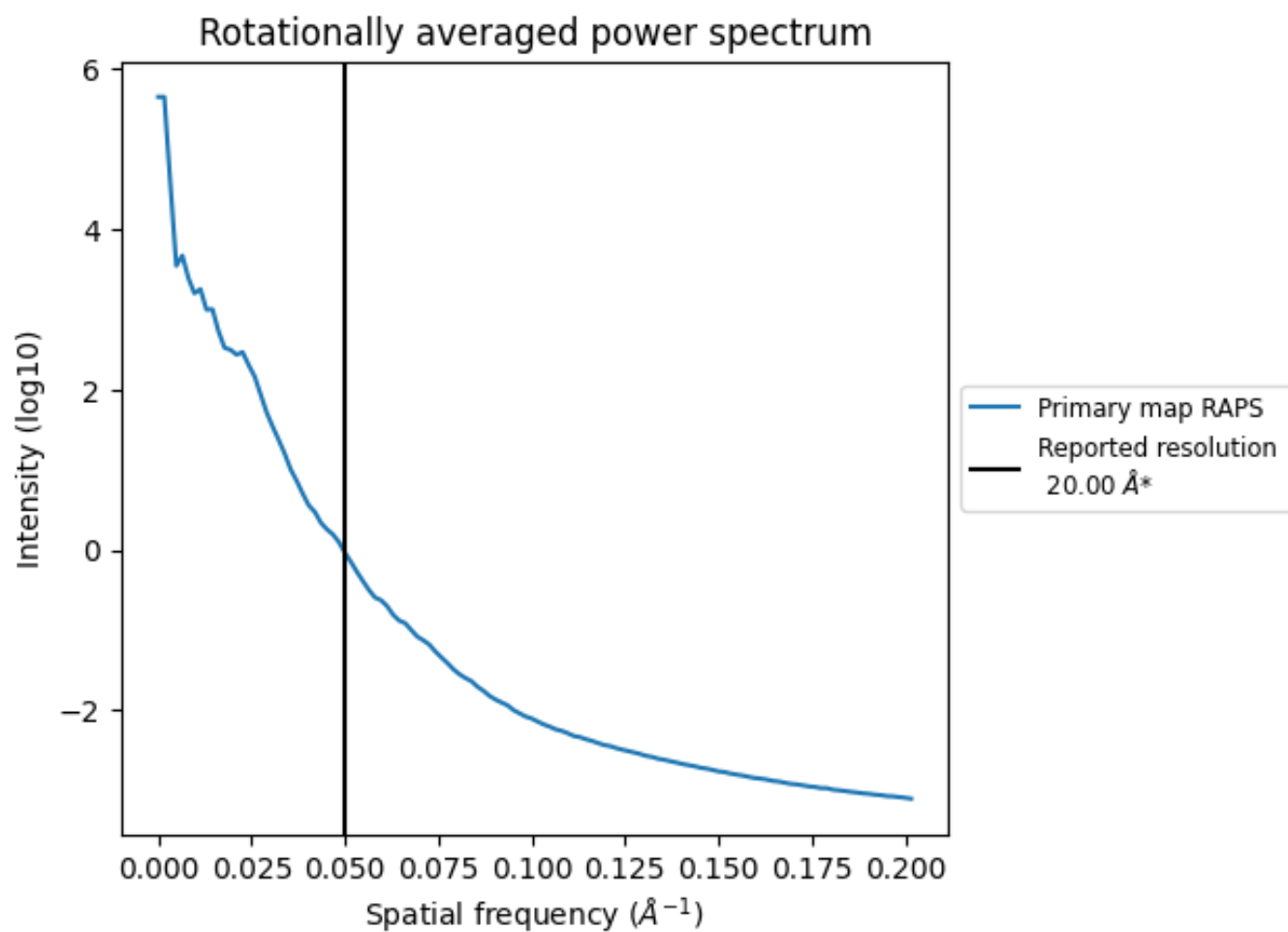
7.2 Volume estimate [i](#)



The volume at the recommended contour level is 25767 nm^3 ; this corresponds to an approximate mass of 23276 kDa.

The volume estimate graph shows how the enclosed volume varies with the contour level. The recommended contour level is shown as a vertical line and the intersection between the line and the curve gives the volume of the enclosed surface at the given level.

7.3 Rotationally averaged power spectrum [i](#)



*Reported resolution corresponds to spatial frequency of 0.050 Å⁻¹

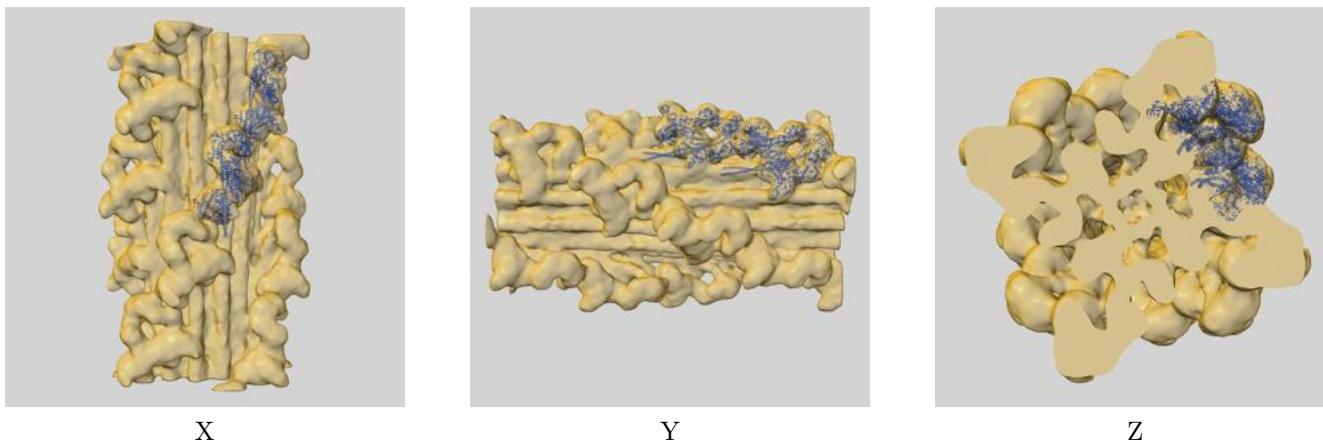
8 Fourier-Shell correlation

This section was not generated. No FSC curve or half-maps provided.

9 Map-model fit [i](#)

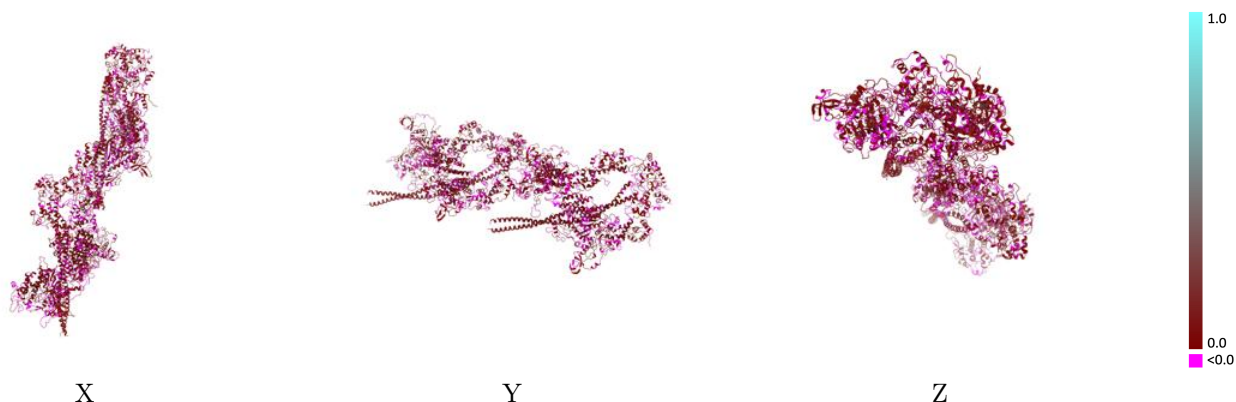
This section contains information regarding the fit between EMDB map EMD-1950 and PDB model 3JBH. Per-residue inclusion information can be found in section 3 on page 5.

9.1 Map-model overlay [i](#)



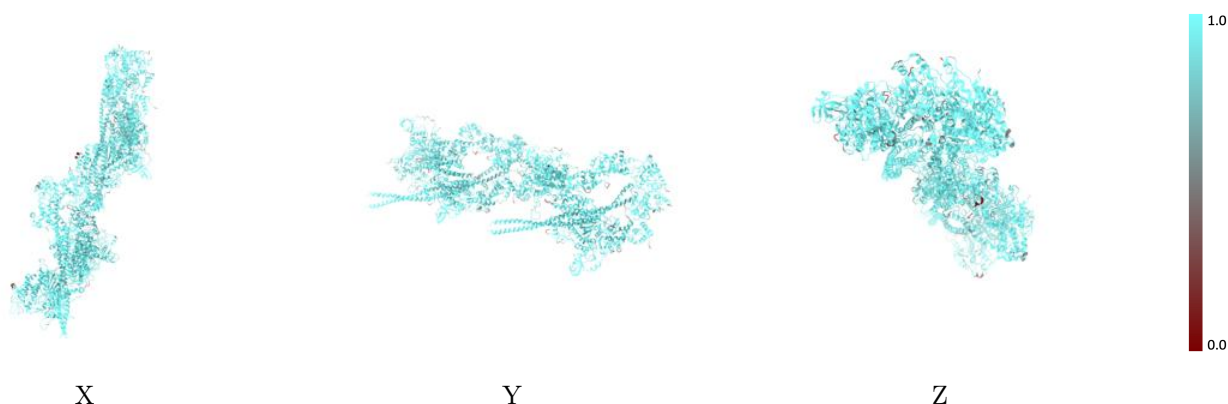
The images above show the 3D surface view of the map at the recommended contour level 25.0 at 50% transparency in yellow overlaid with a ribbon representation of the model coloured in blue. These images allow for the visual assessment of the quality of fit between the atomic model and the map.

9.2 Q-score mapped to coordinate model [\(i\)](#)



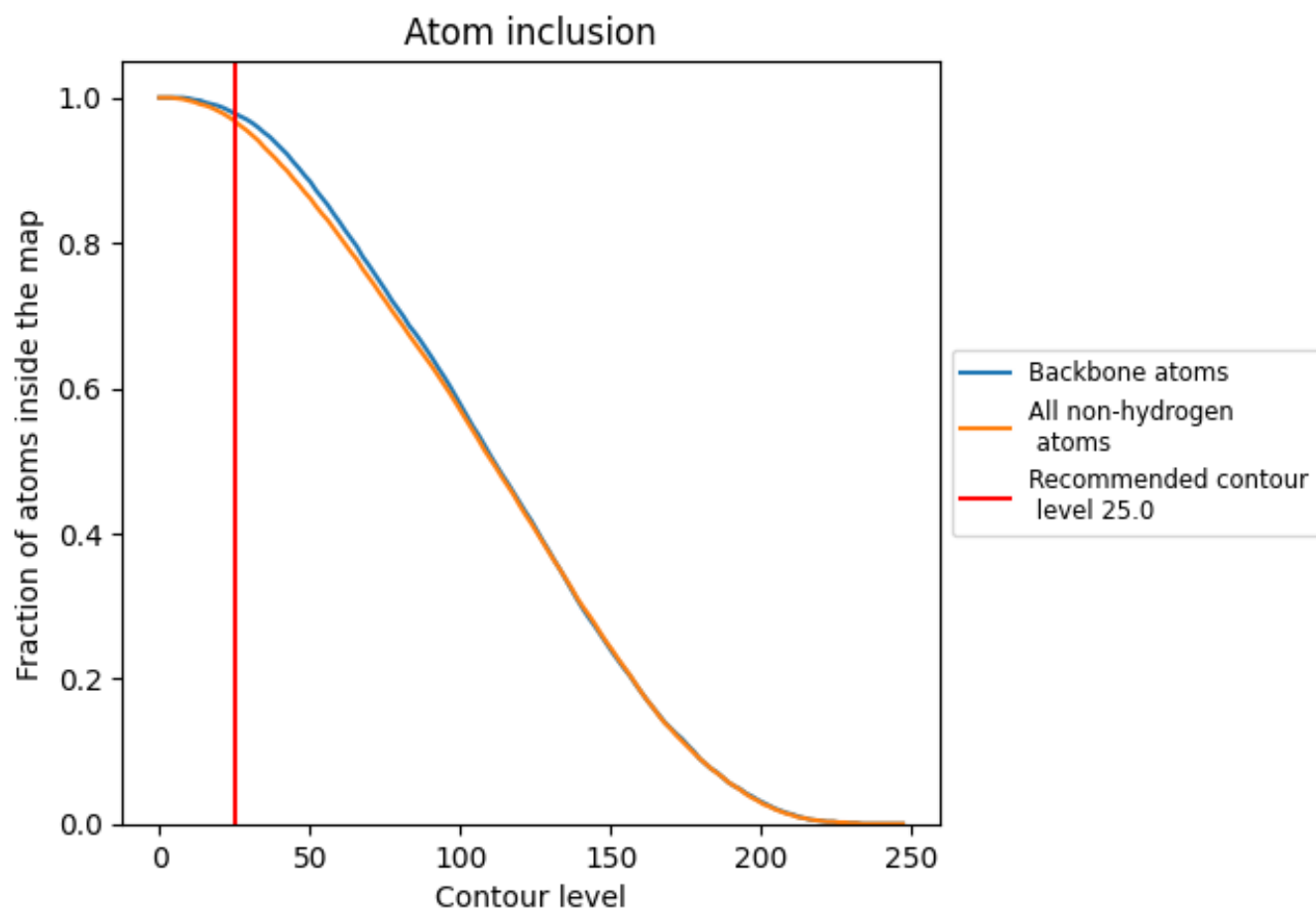
The images above show the model with each residue coloured according to its Q-score. This shows their resolvability in the map with higher Q-score values reflecting better resolvability. Please note: Q-score is calculating the resolvability of atoms, and thus high values are only expected at resolutions at which atoms can be resolved. Low Q-score values may therefore be expected for many entries.

9.3 Atom inclusion mapped to coordinate model [\(i\)](#)



The images above show the model with each residue coloured according to its atom inclusion. This shows to what extent they are inside the map at the recommended contour level (25.0).

























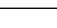
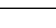
9.4 Atom inclusion [i](#)



At the recommended contour level, 98% of all backbone atoms, 97% of all non-hydrogen atoms, are inside the map.

9.5 Map-model fit summary [i](#)

The table lists the average atom inclusion at the recommended contour level (25.0) and Q-score for the entire model and for each chain.

Chain	Atom inclusion	Q-score
All	 0.9680	 0.0440
A	 0.9730	 0.0440
B	 0.9670	 0.0430
C	 0.9540	 0.0530
D	 0.9590	 0.0410
E	 0.9720	 0.0430
F	 0.9460	 0.0440
G	 0.9770	 0.0460
H	 0.9680	 0.0430
I	 0.9550	 0.0520
J	 0.9610	 0.0380
K	 0.9680	 0.0440
L	 0.9440	 0.0440

