



Full wwPDB EM Validation Report ⓘ

Apr 29, 2024 – 10:24 PM JST

PDB ID : 8JCB
EMDB ID : EMD-36156
Title : Vgamma5 Vdelta1 T cell receptor complex
Authors : Xin, W.; Huang, B.; Chi, X.; Xu, M.; Zhang, Y.; Li, X.; Su, Q.; Zhou, Q.
Deposited on : 2023-05-10
Resolution : 9.50 Å (reported)

This is a Full wwPDB EM Validation Report for a publicly released PDB entry.

We welcome your comments at validation@mail.wwpdb.org

A user guide is available at

<https://www.wwpdb.org/validation/2017/EMValidationReportHelp>

with specific help available everywhere you see the ⓘ symbol.

The types of validation reports are described at

<http://www.wwpdb.org/validation/2017/FAQs#types>.

The following versions of software and data (see [references ⓘ](#)) were used in the production of this report:

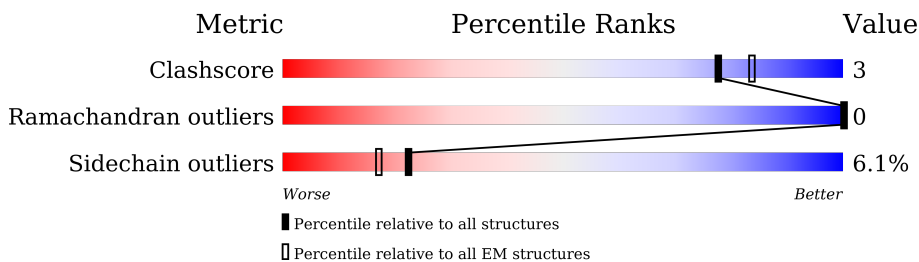
EMDB validation analysis : 0.0.1.dev92
MolProbity : 4.02b-467
Percentile statistics : 20191225.v01 (using entries in the PDB archive December 25th 2019)
MapQ : 1.9.13
Ideal geometry (proteins) : Engh & Huber (2001)
Ideal geometry (DNA, RNA) : Parkinson et al. (1996)
Validation Pipeline (wwPDB-VP) : 2.36.2

1 Overall quality at a glance i

The following experimental techniques were used to determine the structure:
ELECTRON MICROSCOPY

The reported resolution of this entry is 9.50 Å.

Percentile scores (ranging between 0-100) for global validation metrics of the entry are shown in the following graphic. The table shows the number of entries on which the scores are based.



Metric	Whole archive (#Entries)	EM structures (#Entries)
Clashscore	158937	4297
Ramachandran outliers	154571	4023
Sidechain outliers	154315	3826

The table below summarises the geometric issues observed across the polymeric chains and their fit to the map. The red, orange, yellow and green segments of the bar indicate the fraction of residues that contain outliers for ≥ 3 , 2, 1 and 0 types of geometric quality criteria respectively. A grey segment represents the fraction of residues that are not modelled. The numeric value for each fraction is indicated below the corresponding segment, with a dot representing fractions $\leq 5\%$. The upper red bar (where present) indicates the fraction of residues that have poor fit to the EM map (all-atom inclusion $< 40\%$). The numeric value is given above the bar.

Mol	Chain	Length	Quality of chain
1	A	195	15% 84%
1	B	195	12% 86%
1	a	195	16% 84%
1	b	195	14% 86%
2	D	171	20% 46% 15% 39%
2	d	171	20% 61% 39%
3	E	207	10% 53% 5% 42%
3	F	207	10% 47% 10% 43%

Continued on next page...

Continued from previous page...

Mol	Chain	Length	Quality of chain
3	e	207	<p>11% 58% 42%</p>
3	f	207	<p>30% 57% 43%</p>
4	G	182	<p>1% 56% 7% 37%</p>
4	g	182	<p>15% 63% 37%</p>
5	M	307	<p>1% 59% 15% 24%</p>
5	m	307	<p>6% 66% 9% 24%</p>
6	N	331	<p>1% 57% 17% 24%</p>
6	n	331	<p>1% 67% 8% 24%</p>

2 Entry composition i

There are 6 unique types of molecules in this entry. The entry contains 15950 atoms, of which 0 are hydrogens and 0 are deuteriums.

In the tables below, the AltConf column contains the number of residues with at least one atom in alternate conformation and the Trace column contains the number of residues modelled with at most 2 atoms.

- Molecule 1 is a protein called T-cell surface glycoprotein CD3 zeta chain.

Mol	Chain	Residues	Atoms					AltConf	Trace
			Total	C	N	O	S		
1	A	31	251	175	36	39	1	0	0
1	B	28	226	157	33	35	1	0	0
1	a	31	251	175	36	39	1	0	0
1	b	28	226	157	33	35	1	0	0

There are 124 discrepancies between the modelled and reference sequences:

Chain	Residue	Modelled	Actual	Comment	Reference
A	165	ALA	-	expression tag	UNP P20963
A	166	ALA	-	expression tag	UNP P20963
A	167	ALA	-	expression tag	UNP P20963
A	168	TRP	-	expression tag	UNP P20963
A	169	SER	-	expression tag	UNP P20963
A	170	HIS	-	expression tag	UNP P20963
A	171	PRO	-	expression tag	UNP P20963
A	172	GLN	-	expression tag	UNP P20963
A	173	PHE	-	expression tag	UNP P20963
A	174	GLU	-	expression tag	UNP P20963
A	175	LYS	-	expression tag	UNP P20963
A	176	GLY	-	expression tag	UNP P20963
A	177	GLY	-	expression tag	UNP P20963
A	178	GLY	-	expression tag	UNP P20963
A	179	SER	-	expression tag	UNP P20963
A	180	GLY	-	expression tag	UNP P20963
A	181	GLY	-	expression tag	UNP P20963
A	182	GLY	-	expression tag	UNP P20963
A	183	SER	-	expression tag	UNP P20963
A	184	GLY	-	expression tag	UNP P20963
A	185	GLY	-	expression tag	UNP P20963
A	186	SER	-	expression tag	UNP P20963

Continued on next page...

Continued from previous page...

Chain	Residue	Modelled	Actual	Comment	Reference
A	187	ALA	-	expression tag	UNP P20963
A	188	TRP	-	expression tag	UNP P20963
A	189	SER	-	expression tag	UNP P20963
A	190	HIS	-	expression tag	UNP P20963
A	191	PRO	-	expression tag	UNP P20963
A	192	GLN	-	expression tag	UNP P20963
A	193	PHE	-	expression tag	UNP P20963
A	194	GLU	-	expression tag	UNP P20963
A	195	LYS	-	expression tag	UNP P20963
B	165	ALA	-	expression tag	UNP P20963
B	166	ALA	-	expression tag	UNP P20963
B	167	ALA	-	expression tag	UNP P20963
B	168	TRP	-	expression tag	UNP P20963
B	169	SER	-	expression tag	UNP P20963
B	170	HIS	-	expression tag	UNP P20963
B	171	PRO	-	expression tag	UNP P20963
B	172	GLN	-	expression tag	UNP P20963
B	173	PHE	-	expression tag	UNP P20963
B	174	GLU	-	expression tag	UNP P20963
B	175	LYS	-	expression tag	UNP P20963
B	176	GLY	-	expression tag	UNP P20963
B	177	GLY	-	expression tag	UNP P20963
B	178	GLY	-	expression tag	UNP P20963
B	179	SER	-	expression tag	UNP P20963
B	180	GLY	-	expression tag	UNP P20963
B	181	GLY	-	expression tag	UNP P20963
B	182	GLY	-	expression tag	UNP P20963
B	183	SER	-	expression tag	UNP P20963
B	184	GLY	-	expression tag	UNP P20963
B	185	GLY	-	expression tag	UNP P20963
B	186	SER	-	expression tag	UNP P20963
B	187	ALA	-	expression tag	UNP P20963
B	188	TRP	-	expression tag	UNP P20963
B	189	SER	-	expression tag	UNP P20963
B	190	HIS	-	expression tag	UNP P20963
B	191	PRO	-	expression tag	UNP P20963
B	192	GLN	-	expression tag	UNP P20963
B	193	PHE	-	expression tag	UNP P20963
B	194	GLU	-	expression tag	UNP P20963
B	195	LYS	-	expression tag	UNP P20963
a	165	ALA	-	expression tag	UNP P20963
a	166	ALA	-	expression tag	UNP P20963

Continued on next page...

Continued from previous page...

Chain	Residue	Modelled	Actual	Comment	Reference
a	167	ALA	-	expression tag	UNP P20963
a	168	TRP	-	expression tag	UNP P20963
a	169	SER	-	expression tag	UNP P20963
a	170	HIS	-	expression tag	UNP P20963
a	171	PRO	-	expression tag	UNP P20963
a	172	GLN	-	expression tag	UNP P20963
a	173	PHE	-	expression tag	UNP P20963
a	174	GLU	-	expression tag	UNP P20963
a	175	LYS	-	expression tag	UNP P20963
a	176	GLY	-	expression tag	UNP P20963
a	177	GLY	-	expression tag	UNP P20963
a	178	GLY	-	expression tag	UNP P20963
a	179	SER	-	expression tag	UNP P20963
a	180	GLY	-	expression tag	UNP P20963
a	181	GLY	-	expression tag	UNP P20963
a	182	GLY	-	expression tag	UNP P20963
a	183	SER	-	expression tag	UNP P20963
a	184	GLY	-	expression tag	UNP P20963
a	185	GLY	-	expression tag	UNP P20963
a	186	SER	-	expression tag	UNP P20963
a	187	ALA	-	expression tag	UNP P20963
a	188	TRP	-	expression tag	UNP P20963
a	189	SER	-	expression tag	UNP P20963
a	190	HIS	-	expression tag	UNP P20963
a	191	PRO	-	expression tag	UNP P20963
a	192	GLN	-	expression tag	UNP P20963
a	193	PHE	-	expression tag	UNP P20963
a	194	GLU	-	expression tag	UNP P20963
a	195	LYS	-	expression tag	UNP P20963
b	165	ALA	-	expression tag	UNP P20963
b	166	ALA	-	expression tag	UNP P20963
b	167	ALA	-	expression tag	UNP P20963
b	168	TRP	-	expression tag	UNP P20963
b	169	SER	-	expression tag	UNP P20963
b	170	HIS	-	expression tag	UNP P20963
b	171	PRO	-	expression tag	UNP P20963
b	172	GLN	-	expression tag	UNP P20963
b	173	PHE	-	expression tag	UNP P20963
b	174	GLU	-	expression tag	UNP P20963
b	175	LYS	-	expression tag	UNP P20963
b	176	GLY	-	expression tag	UNP P20963
b	177	GLY	-	expression tag	UNP P20963

Continued on next page...

Continued from previous page...

Chain	Residue	Modelled	Actual	Comment	Reference
b	178	GLY	-	expression tag	UNP P20963
b	179	SER	-	expression tag	UNP P20963
b	180	GLY	-	expression tag	UNP P20963
b	181	GLY	-	expression tag	UNP P20963
b	182	GLY	-	expression tag	UNP P20963
b	183	SER	-	expression tag	UNP P20963
b	184	GLY	-	expression tag	UNP P20963
b	185	GLY	-	expression tag	UNP P20963
b	186	SER	-	expression tag	UNP P20963
b	187	ALA	-	expression tag	UNP P20963
b	188	TRP	-	expression tag	UNP P20963
b	189	SER	-	expression tag	UNP P20963
b	190	HIS	-	expression tag	UNP P20963
b	191	PRO	-	expression tag	UNP P20963
b	192	GLN	-	expression tag	UNP P20963
b	193	PHE	-	expression tag	UNP P20963
b	194	GLU	-	expression tag	UNP P20963
b	195	LYS	-	expression tag	UNP P20963

- Molecule 2 is a protein called T-cell surface glycoprotein CD3 delta chain.

Mol	Chain	Residues	Atoms					AltConf	Trace
			Total	C	N	O	S		
2	D	105	817	521	135	155	6	0	0
2	d	105	817	521	135	155	6	0	0

- Molecule 3 is a protein called T-cell surface glycoprotein CD3 epsilon chain.

Mol	Chain	Residues	Atoms					AltConf	Trace
			Total	C	N	O	S		
3	E	121	959	609	151	191	8	0	0
3	F	118	933	594	148	183	8	0	0
3	e	121	959	609	151	191	8	0	0
3	f	118	933	594	148	183	8	0	0

- Molecule 4 is a protein called T-cell surface glycoprotein CD3 gamma chain.

Mol	Chain	Residues	Atoms					AltConf	Trace
			Total	C	N	O	S		
4	G	115	907	582	150	168	7	0	0
4	g	115	907	582	150	168	7	0	0

- Molecule 5 is a protein called T cell receptor delta variable 1,T cell receptor delta constant.

Mol	Chain	Residues	Atoms					AltConf	Trace
			Total	C	N	O	S		
5	M	233	1844	1187	308	339	10	0	0
5	m	233	1844	1187	308	339	10	0	0

There are 120 discrepancies between the modelled and reference sequences:

Chain	Residue	Modelled	Actual	Comment	Reference
M	-16	MET	-	initiating methionine	UNP A0A1B0GX56
M	-15	ASP	-	expression tag	UNP A0A1B0GX56
M	-14	MET	-	expression tag	UNP A0A1B0GX56
M	-13	ARG	-	expression tag	UNP A0A1B0GX56
M	-12	VAL	-	expression tag	UNP A0A1B0GX56
M	-11	PRO	-	expression tag	UNP A0A1B0GX56
M	-10	ALA	-	expression tag	UNP A0A1B0GX56
M	-9	GLN	-	expression tag	UNP A0A1B0GX56
M	-8	LEU	-	expression tag	UNP A0A1B0GX56
M	-7	LEU	-	expression tag	UNP A0A1B0GX56
M	-6	GLY	-	expression tag	UNP A0A1B0GX56
M	-5	LEU	-	expression tag	UNP A0A1B0GX56
M	-4	LEU	-	expression tag	UNP A0A1B0GX56
M	-3	LEU	-	expression tag	UNP A0A1B0GX56
M	-2	LEU	-	expression tag	UNP A0A1B0GX56
M	-1	TRP	-	expression tag	UNP A0A1B0GX56
M	0	LEU	-	expression tag	UNP A0A1B0GX56
M	1	SER	-	expression tag	UNP A0A1B0GX56
M	2	GLY	-	expression tag	UNP A0A1B0GX56
M	3	ALA	-	expression tag	UNP A0A1B0GX56
M	4	ARG	-	expression tag	UNP A0A1B0GX56
M	5	CYS	-	expression tag	UNP A0A1B0GX56
M	6	MET	-	expression tag	UNP A0A1B0GX56
M	7	ASP	-	expression tag	UNP A0A1B0GX56
M	8	TYR	-	expression tag	UNP A0A1B0GX56
M	9	LYS	-	expression tag	UNP A0A1B0GX56
M	10	ASP	-	expression tag	UNP A0A1B0GX56

Continued on next page...

Continued from previous page...

Chain	Residue	Modelled	Actual	Comment	Reference
M	11	ASP	-	expression tag	UNP A0A1B0GX56
M	12	ASP	-	expression tag	UNP A0A1B0GX56
M	13	ASP	-	expression tag	UNP A0A1B0GX56
M	14	LYS	-	expression tag	UNP A0A1B0GX56
M	15	GLY	-	expression tag	UNP A0A1B0GX56
M	16	GLY	-	expression tag	UNP A0A1B0GX56
M	17	SER	-	expression tag	UNP A0A1B0GX56
M	18	GLU	-	expression tag	UNP A0A1B0GX56
M	19	THR	-	expression tag	UNP A0A1B0GX56
M	20	GLY	-	expression tag	UNP A0A1B0GX56
M	115	ASP	-	linker	UNP A0A1B0GX56
M	116	PRO	-	linker	UNP A0A1B0GX56
M	117	GLY	-	linker	UNP A0A1B0GX56
M	118	GLY	-	linker	UNP A0A1B0GX56
M	119	LEU	-	linker	UNP A0A1B0GX56
M	120	ASN	-	linker	UNP A0A1B0GX56
M	121	THR	-	linker	UNP A0A1B0GX56
M	122	ASP	-	linker	UNP A0A1B0GX56
M	123	LYS	-	linker	UNP A0A1B0GX56
M	124	LEU	-	linker	UNP A0A1B0GX56
M	125	ILE	-	linker	UNP A0A1B0GX56
M	126	PHE	-	linker	UNP A0A1B0GX56
M	127	GLY	-	linker	UNP A0A1B0GX56
M	128	LYS	-	linker	UNP A0A1B0GX56
M	129	GLY	-	linker	UNP A0A1B0GX56
M	130	THR	-	linker	UNP A0A1B0GX56
M	131	ARG	-	linker	UNP A0A1B0GX56
M	132	VAL	-	linker	UNP A0A1B0GX56
M	133	THR	-	linker	UNP A0A1B0GX56
M	134	VAL	-	linker	UNP A0A1B0GX56
M	135	GLU	-	linker	UNP A0A1B0GX56
M	136	PRO	-	linker	UNP A0A1B0GX56
M	137	ARG	-	linker	UNP A0A1B0GX56
m	-16	MET	-	initiating methionine	UNP A0A1B0GX56
m	-15	ASP	-	expression tag	UNP A0A1B0GX56
m	-14	MET	-	expression tag	UNP A0A1B0GX56
m	-13	ARG	-	expression tag	UNP A0A1B0GX56
m	-12	VAL	-	expression tag	UNP A0A1B0GX56
m	-11	PRO	-	expression tag	UNP A0A1B0GX56
m	-10	ALA	-	expression tag	UNP A0A1B0GX56
m	-9	GLN	-	expression tag	UNP A0A1B0GX56
m	-8	LEU	-	expression tag	UNP A0A1B0GX56

Continued on next page...

Continued from previous page...

Chain	Residue	Modelled	Actual	Comment	Reference
m	-7	LEU	-	expression tag	UNP A0A1B0GX56
m	-6	GLY	-	expression tag	UNP A0A1B0GX56
m	-5	LEU	-	expression tag	UNP A0A1B0GX56
m	-4	LEU	-	expression tag	UNP A0A1B0GX56
m	-3	LEU	-	expression tag	UNP A0A1B0GX56
m	-2	LEU	-	expression tag	UNP A0A1B0GX56
m	-1	TRP	-	expression tag	UNP A0A1B0GX56
m	0	LEU	-	expression tag	UNP A0A1B0GX56
m	1	SER	-	expression tag	UNP A0A1B0GX56
m	2	GLY	-	expression tag	UNP A0A1B0GX56
m	3	ALA	-	expression tag	UNP A0A1B0GX56
m	4	ARG	-	expression tag	UNP A0A1B0GX56
m	5	CYS	-	expression tag	UNP A0A1B0GX56
m	6	MET	-	expression tag	UNP A0A1B0GX56
m	7	ASP	-	expression tag	UNP A0A1B0GX56
m	8	TYR	-	expression tag	UNP A0A1B0GX56
m	9	LYS	-	expression tag	UNP A0A1B0GX56
m	10	ASP	-	expression tag	UNP A0A1B0GX56
m	11	ASP	-	expression tag	UNP A0A1B0GX56
m	12	ASP	-	expression tag	UNP A0A1B0GX56
m	13	ASP	-	expression tag	UNP A0A1B0GX56
m	14	LYS	-	expression tag	UNP A0A1B0GX56
m	15	GLY	-	expression tag	UNP A0A1B0GX56
m	16	GLY	-	expression tag	UNP A0A1B0GX56
m	17	SER	-	expression tag	UNP A0A1B0GX56
m	18	GLU	-	expression tag	UNP A0A1B0GX56
m	19	THR	-	expression tag	UNP A0A1B0GX56
m	20	GLY	-	expression tag	UNP A0A1B0GX56
m	115	ASP	-	linker	UNP A0A1B0GX56
m	116	PRO	-	linker	UNP A0A1B0GX56
m	117	GLY	-	linker	UNP A0A1B0GX56
m	118	GLY	-	linker	UNP A0A1B0GX56
m	119	LEU	-	linker	UNP A0A1B0GX56
m	120	ASN	-	linker	UNP A0A1B0GX56
m	121	THR	-	linker	UNP A0A1B0GX56
m	122	ASP	-	linker	UNP A0A1B0GX56
m	123	LYS	-	linker	UNP A0A1B0GX56
m	124	LEU	-	linker	UNP A0A1B0GX56
m	125	ILE	-	linker	UNP A0A1B0GX56
m	126	PHE	-	linker	UNP A0A1B0GX56
m	127	GLY	-	linker	UNP A0A1B0GX56
m	128	LYS	-	linker	UNP A0A1B0GX56

Continued on next page...

Continued from previous page...

Chain	Residue	Modelled	Actual	Comment	Reference
m	129	GLY	-	linker	UNP A0A1B0GX56
m	130	THR	-	linker	UNP A0A1B0GX56
m	131	ARG	-	linker	UNP A0A1B0GX56
m	132	VAL	-	linker	UNP A0A1B0GX56
m	133	THR	-	linker	UNP A0A1B0GX56
m	134	VAL	-	linker	UNP A0A1B0GX56
m	135	GLU	-	linker	UNP A0A1B0GX56
m	136	PRO	-	linker	UNP A0A1B0GX56
m	137	ARG	-	linker	UNP A0A1B0GX56

- Molecule 6 is a protein called T cell receptor gamma variable 5,T cell receptor gamma constant 1.

Mol	Chain	Residues	Atoms					AltConf	Trace
6	N	250	Total	C	N	O	S	0	0
			2038	1318	337	374	9		
6	n	250	Total	C	N	O	S	0	0
			2038	1318	337	374	9		

There are 116 discrepancies between the modelled and reference sequences:

Chain	Residue	Modelled	Actual	Comment	Reference
N	-33	MET	-	initiating methionine	UNP A0A0B4J1U4
N	-32	ASP	-	expression tag	UNP A0A0B4J1U4
N	-31	MET	-	expression tag	UNP A0A0B4J1U4
N	-30	ARG	-	expression tag	UNP A0A0B4J1U4
N	-29	VAL	-	expression tag	UNP A0A0B4J1U4
N	-28	PRO	-	expression tag	UNP A0A0B4J1U4
N	-27	ALA	-	expression tag	UNP A0A0B4J1U4
N	-26	GLN	-	expression tag	UNP A0A0B4J1U4
N	-25	LEU	-	expression tag	UNP A0A0B4J1U4
N	-24	LEU	-	expression tag	UNP A0A0B4J1U4
N	-23	GLY	-	expression tag	UNP A0A0B4J1U4
N	-22	LEU	-	expression tag	UNP A0A0B4J1U4
N	-21	LEU	-	expression tag	UNP A0A0B4J1U4
N	-20	LEU	-	expression tag	UNP A0A0B4J1U4
N	-19	LEU	-	expression tag	UNP A0A0B4J1U4
N	-18	TRP	-	expression tag	UNP A0A0B4J1U4
N	-17	LEU	-	expression tag	UNP A0A0B4J1U4
N	-16	SER	-	expression tag	UNP A0A0B4J1U4
N	-15	GLY	-	expression tag	UNP A0A0B4J1U4
N	-14	ALA	-	expression tag	UNP A0A0B4J1U4

Continued on next page...

Continued from previous page...

Chain	Residue	Modelled	Actual	Comment	Reference
N	-13	ARG	-	expression tag	UNP A0A0B4J1U4
N	-12	CYS	-	expression tag	UNP A0A0B4J1U4
N	-11	MET	-	expression tag	UNP A0A0B4J1U4
N	-10	ASP	-	expression tag	UNP A0A0B4J1U4
N	-9	TYR	-	expression tag	UNP A0A0B4J1U4
N	-8	LYS	-	expression tag	UNP A0A0B4J1U4
N	-7	ASP	-	expression tag	UNP A0A0B4J1U4
N	-6	ASP	-	expression tag	UNP A0A0B4J1U4
N	-5	ASP	-	expression tag	UNP A0A0B4J1U4
N	-4	ASP	-	expression tag	UNP A0A0B4J1U4
N	-3	LYS	-	expression tag	UNP A0A0B4J1U4
N	-2	GLY	-	expression tag	UNP A0A0B4J1U4
N	-1	GLY	-	expression tag	UNP A0A0B4J1U4
N	0	SER	-	expression tag	UNP A0A0B4J1U4
N	1	GLU	-	expression tag	UNP A0A0B4J1U4
N	2	THR	-	expression tag	UNP A0A0B4J1U4
N	3	GLY	-	expression tag	UNP A0A0B4J1U4
N	104	GLY	-	linker	UNP A0A0B4J1U4
N	105	ASN	-	linker	UNP A0A0B4J1U4
N	106	PRO	-	linker	UNP A0A0B4J1U4
N	107	LYS	-	linker	UNP A0A0B4J1U4
N	108	THR	-	linker	UNP A0A0B4J1U4
N	109	HIS	-	linker	UNP A0A0B4J1U4
N	110	TYR	-	linker	UNP A0A0B4J1U4
N	111	TYR	-	linker	UNP A0A0B4J1U4
N	112	LYS	-	linker	UNP A0A0B4J1U4
N	113	LYS	-	linker	UNP A0A0B4J1U4
N	114	LEU	-	linker	UNP A0A0B4J1U4
N	115	PHE	-	linker	UNP A0A0B4J1U4
N	116	GLY	-	linker	UNP A0A0B4J1U4
N	117	SER	-	linker	UNP A0A0B4J1U4
N	118	GLY	-	linker	UNP A0A0B4J1U4
N	119	THR	-	linker	UNP A0A0B4J1U4
N	120	THR	-	linker	UNP A0A0B4J1U4
N	121	LEU	-	linker	UNP A0A0B4J1U4
N	122	VAL	-	linker	UNP A0A0B4J1U4
N	123	VAL	-	linker	UNP A0A0B4J1U4
N	124	THR	-	linker	UNP A0A0B4J1U4
n	-33	MET	-	initiating methionine	UNP A0A0B4J1U4
n	-32	ASP	-	expression tag	UNP A0A0B4J1U4
n	-31	MET	-	expression tag	UNP A0A0B4J1U4
n	-30	ARG	-	expression tag	UNP A0A0B4J1U4

Continued on next page...

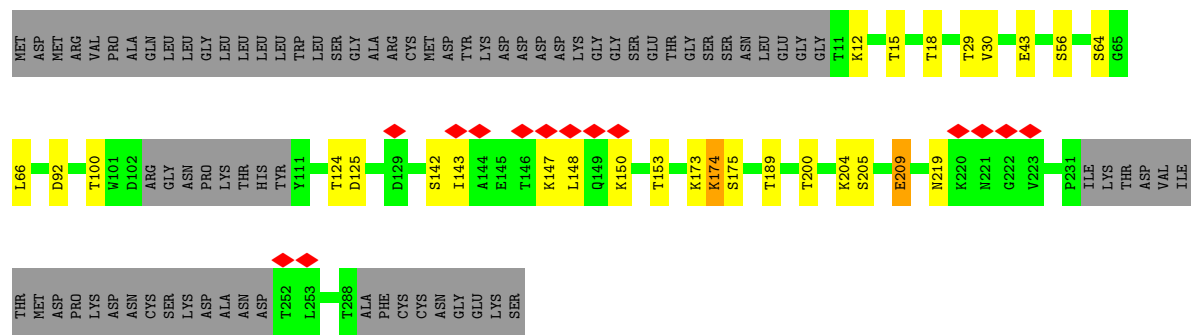
Continued from previous page...

Chain	Residue	Modelled	Actual	Comment	Reference
n	-29	VAL	-	expression tag	UNP A0A0B4J1U4
n	-28	PRO	-	expression tag	UNP A0A0B4J1U4
n	-27	ALA	-	expression tag	UNP A0A0B4J1U4
n	-26	GLN	-	expression tag	UNP A0A0B4J1U4
n	-25	LEU	-	expression tag	UNP A0A0B4J1U4
n	-24	LEU	-	expression tag	UNP A0A0B4J1U4
n	-23	GLY	-	expression tag	UNP A0A0B4J1U4
n	-22	LEU	-	expression tag	UNP A0A0B4J1U4
n	-21	LEU	-	expression tag	UNP A0A0B4J1U4
n	-20	LEU	-	expression tag	UNP A0A0B4J1U4
n	-19	LEU	-	expression tag	UNP A0A0B4J1U4
n	-18	TRP	-	expression tag	UNP A0A0B4J1U4
n	-17	LEU	-	expression tag	UNP A0A0B4J1U4
n	-16	SER	-	expression tag	UNP A0A0B4J1U4
n	-15	GLY	-	expression tag	UNP A0A0B4J1U4
n	-14	ALA	-	expression tag	UNP A0A0B4J1U4
n	-13	ARG	-	expression tag	UNP A0A0B4J1U4
n	-12	CYS	-	expression tag	UNP A0A0B4J1U4
n	-11	MET	-	expression tag	UNP A0A0B4J1U4
n	-10	ASP	-	expression tag	UNP A0A0B4J1U4
n	-9	TYR	-	expression tag	UNP A0A0B4J1U4
n	-8	LYS	-	expression tag	UNP A0A0B4J1U4
n	-7	ASP	-	expression tag	UNP A0A0B4J1U4
n	-6	ASP	-	expression tag	UNP A0A0B4J1U4
n	-5	ASP	-	expression tag	UNP A0A0B4J1U4
n	-4	ASP	-	expression tag	UNP A0A0B4J1U4
n	-3	LYS	-	expression tag	UNP A0A0B4J1U4
n	-2	GLY	-	expression tag	UNP A0A0B4J1U4
n	-1	GLY	-	expression tag	UNP A0A0B4J1U4
n	0	SER	-	expression tag	UNP A0A0B4J1U4
n	1	GLU	-	expression tag	UNP A0A0B4J1U4
n	2	THR	-	expression tag	UNP A0A0B4J1U4
n	3	GLY	-	expression tag	UNP A0A0B4J1U4
n	104	GLY	-	linker	UNP A0A0B4J1U4
n	105	ASN	-	linker	UNP A0A0B4J1U4
n	106	PRO	-	linker	UNP A0A0B4J1U4
n	107	LYS	-	linker	UNP A0A0B4J1U4
n	108	THR	-	linker	UNP A0A0B4J1U4
n	109	HIS	-	linker	UNP A0A0B4J1U4
n	110	TYR	-	linker	UNP A0A0B4J1U4
n	111	TYR	-	linker	UNP A0A0B4J1U4
n	112	LYS	-	linker	UNP A0A0B4J1U4

Continued on next page...

Continued from previous page...

Chain	Residue	Modelled	Actual	Comment	Reference
n	113	LYS	-	linker	UNP A0A0B4J1U4
n	114	LEU	-	linker	UNP A0A0B4J1U4
n	115	PHE	-	linker	UNP A0A0B4J1U4
n	116	GLY	-	linker	UNP A0A0B4J1U4
n	117	SER	-	linker	UNP A0A0B4J1U4
n	118	GLY	-	linker	UNP A0A0B4J1U4
n	119	THR	-	linker	UNP A0A0B4J1U4
n	120	THR	-	linker	UNP A0A0B4J1U4
n	121	LEU	-	linker	UNP A0A0B4J1U4
n	122	VAL	-	linker	UNP A0A0B4J1U4
n	123	VAL	-	linker	UNP A0A0B4J1U4
n	124	THR	-	linker	UNP A0A0B4J1U4



4 Experimental information

Property	Value	Source
EM reconstruction method	SINGLE PARTICLE	Depositor
Imposed symmetry	POINT, Not provided	
Number of particles used	325186	Depositor
Resolution determination method	FSC 0.143 CUT-OFF	Depositor
CTF correction method	PHASE FLIPPING AND AMPLITUDE CORRECTION	Depositor
Microscope	FEI TITAN KRIOS	Depositor
Voltage (kV)	300	Depositor
Electron dose ($e^-/\text{\AA}^2$)	50	Depositor
Minimum defocus (nm)	1200	Depositor
Maximum defocus (nm)	2000	Depositor
Magnification	Not provided	
Image detector	GATAN K3 BIOQUANTUM (6k x 4k)	Depositor
Maximum map value	0.021	Depositor
Minimum map value	-0.007	Depositor
Average map value	0.000	Depositor
Map value standard deviation	0.002	Depositor
Recommended contour level	0.0046	Depositor
Map size (Å)	275.712, 275.712, 275.712	wwPDB
Map dimensions	256, 256, 256	wwPDB
Map angles (°)	90.0, 90.0, 90.0	wwPDB
Pixel spacing (Å)	1.077, 1.077, 1.077	Depositor

5 Model quality i

5.1 Standard geometry i

The Z score for a bond length (or angle) is the number of standard deviations the observed value is removed from the expected value. A bond length (or angle) with $|Z| > 5$ is considered an outlier worth inspection. RMSZ is the root-mean-square of all Z scores of the bond lengths (or angles).

Mol	Chain	Bond lengths		Bond angles	
		RMSZ	# Z >5	RMSZ	# Z >5
1	A	0.38	0/256	0.65	0/346
1	B	0.36	0/230	0.70	0/311
1	a	0.38	0/256	0.65	0/346
1	b	0.36	0/230	0.70	0/311
2	D	0.36	0/829	0.66	1/1127 (0.1%)
2	d	0.35	0/829	0.66	1/1127 (0.1%)
3	E	0.37	0/980	0.63	0/1331
3	F	0.34	0/953	0.60	0/1294
3	e	0.37	0/980	0.63	0/1331
3	f	0.34	0/953	0.60	0/1294
4	G	0.36	0/925	0.58	0/1244
4	g	0.36	0/925	0.58	0/1244
5	M	0.41	0/1880	0.62	2/2537 (0.1%)
5	m	0.41	0/1880	0.62	2/2537 (0.1%)
6	N	0.42	0/2087	0.61	2/2834 (0.1%)
6	n	0.43	0/2087	0.63	3/2834 (0.1%)
All	All	0.39	0/16280	0.62	11/22048 (0.0%)

There are no bond length outliers.

All (11) bond angle outliers are listed below:

Mol	Chain	Res	Type	Atoms	Z	Observed(°)	Ideal(°)
5	m	104	GLU	CA-CB-CG	7.27	129.40	113.40
5	M	104	GLU	CA-CB-CG	7.25	129.35	113.40
5	M	134	VAL	C-N-CA	6.09	136.94	121.70
5	m	134	VAL	C-N-CA	6.08	136.91	121.70
6	n	219	ASN	CB-CA-C	-5.98	98.45	110.40
6	n	209	GLU	CA-CB-CG	5.47	125.44	113.40
6	N	209	GLU	CA-CB-CG	5.47	125.43	113.40
6	n	174	LYS	CA-CB-CG	5.32	125.11	113.40
6	N	174	LYS	CA-CB-CG	5.31	125.09	113.40
2	D	29	LEU	CA-CB-CG	5.21	127.29	115.30
2	d	29	LEU	CA-CB-CG	5.21	127.29	115.30

There are no chirality outliers.

There are no planarity outliers.

5.2 Too-close contacts [i](#)

In the following table, the Non-H and H(model) columns list the number of non-hydrogen atoms and hydrogen atoms in the chain respectively. The H(added) column lists the number of hydrogen atoms added and optimized by MolProbity. The Clashes column lists the number of clashes within the asymmetric unit, whereas Symm-Clashes lists symmetry-related clashes.

Mol	Chain	Non-H	H(model)	H(added)	Clashes	Symm-Clashes
1	A	251	0	275	2	0
1	B	226	0	250	4	0
1	a	251	0	275	0	0
1	b	226	0	250	0	0
2	D	817	0	828	19	0
2	d	817	0	828	0	0
3	E	959	0	919	8	0
3	F	933	0	897	12	0
3	e	959	0	919	0	0
3	f	933	0	897	0	0
4	G	907	0	897	8	0
4	g	907	0	897	0	0
5	M	1844	0	1884	19	0
5	m	1844	0	1884	0	0
6	N	2038	0	2052	28	0
6	n	2038	0	2052	0	0
All	All	15950	0	16004	92	0

The all-atom clashscore is defined as the number of clashes found per 1000 atoms (including hydrogen atoms). The all-atom clashscore for this structure is 3.

All (92) close contacts within the same asymmetric unit are listed below, sorted by their clash magnitude.

Atom-1	Atom-2	Interatomic distance (Å)	Clash overlap (Å)
5:M:151:ASN:ND2	6:N:138:ILE:O	2.37	0.64
2:D:66:ASP:HB3	2:D:68:ARG:HH21	1.63	0.64
5:M:82:ARG:NH2	5:M:105:ASP:OD2	2.33	0.62
2:D:85:THR:HG21	3:E:33:GLN:HE22	1.65	0.62
6:N:139:PHE:HB2	6:N:155:LEU:HB3	1.81	0.62
2:D:68:ARG:HA	2:D:88:VAL:O	2.00	0.62
2:D:55:ILE:HG23	2:D:56:THR:HG23	1.83	0.61

Continued on next page...

Continued from previous page...

Atom-1	Atom-2	Interatomic distance (Å)	Clash overlap (Å)
5:M:35:VAL:HG12	5:M:36:ARG:HG2	1.82	0.61
6:N:37:HIS:HD2	6:N:49:ARG:HH21	1.50	0.60
6:N:219:ASN:HD22	6:N:224:ASP:HA	1.94	0.60
2:D:47:THR:O	2:D:71:TYR:OH	2.21	0.59
6:N:219:ASN:ND2	6:N:224:ASP:HA	2.50	0.58
5:M:22:GLN:NE2	5:M:47:THR:OG1	2.37	0.58
6:N:39:TYR:OH	6:N:113:LYS:NZ	2.37	0.56
4:G:135:PHE:HB3	5:M:288:PHE:HZ	1.71	0.56
2:D:100:ASP:HB2	2:D:103:THR:HG22	1.88	0.56
6:N:268:LEU:O	6:N:272:LYS:NZ	2.40	0.55
4:G:37:GLN:NE2	4:G:41:SER:O	2.40	0.54
6:N:205:SER:O	6:N:205:SER:OG	2.26	0.54
6:N:20:SER:OG	6:N:21:SER:N	2.41	0.54
5:M:122:ASP:N	5:M:122:ASP:OD1	2.41	0.54
3:F:145:LEU:HD11	4:G:129:LEU:HD23	1.90	0.53
2:D:68:ARG:NH2	2:D:90:TYR:O	2.42	0.53
5:M:145:SER:O	5:M:145:SER:OG	2.25	0.53
3:E:34:THR:O	3:E:51:GLN:NE2	2.43	0.52
4:G:104:CYS:SG	4:G:105:GLN:N	2.83	0.52
3:F:75:ILE:HD11	3:F:84:LEU:HD23	1.92	0.51
5:M:144:PRO:HD2	5:M:217:VAL:HG21	1.93	0.51
4:G:86:GLN:OE1	4:G:93:LYS:NZ	2.44	0.51
3:F:38:VAL:HG23	3:F:47:LEU:HB3	1.94	0.49
5:M:77:ASN:ND2	5:M:85:VAL:O	2.46	0.49
3:F:57:ILE:HA	3:F:100:PRO:HA	1.94	0.48
4:G:56:PHE:HB2	4:G:86:GLN:HG3	1.95	0.48
4:G:30:LEU:HD13	4:G:48:ALA:HB2	1.95	0.48
5:M:28:GLN:OE1	5:M:42:ASN:ND2	2.41	0.48
6:N:155:LEU:HD13	6:N:198:TRP:HB3	1.96	0.48
3:F:127:VAL:HA	3:F:130:VAL:HG12	1.96	0.47
5:M:283:LEU:HB2	6:N:280:ILE:HD12	1.96	0.47
5:M:40:THR:HG23	5:M:97:THR:HG23	1.97	0.47
1:A:28:ASP:HB3	6:N:255:LEU:HD21	1.98	0.46
2:D:93:CYS:O	3:E:117:ARG:NH1	2.49	0.46
6:N:63:GLU:HG2	6:N:65:GLY:H	1.81	0.46
2:D:77:ASP:N	2:D:77:ASP:OD1	2.42	0.46
6:N:43:GLU:H	6:N:43:GLU:HG3	1.61	0.46
6:N:153:THR:OG1	6:N:200:THR:OG1	2.24	0.46
5:M:73:SER:O	5:M:73:SER:OG	2.31	0.45
3:E:38:VAL:HG22	3:E:47:LEU:HD22	1.98	0.45
6:N:184:GLY:O	6:N:195:LYS:NZ	2.45	0.45

Continued on next page...

Continued from previous page...

Atom-1	Atom-2	Interatomic distance (Å)	Clash overlap (Å)
2:D:55:ILE:HD12	2:D:55:ILE:HA	1.90	0.45
2:D:28:GLU:OE1	2:D:63:ARG:NE	2.50	0.45
6:N:220:LYS:H	6:N:220:LYS:HG3	2.53	0.45
2:D:25:PRO:HG2	2:D:36:ASN:HB3	1.99	0.45
2:D:29:LEU:HD23	2:D:30:GLU:H	1.83	0.45
3:F:95:TYR:HB3	3:F:111:TYR:HD2	1.82	0.45
3:F:100:PRO:O	3:F:103:SER:OG	2.33	0.45
1:A:46:LEU:HD23	1:A:46:LEU:HA	1.84	0.44
2:D:52:LEU:HD23	2:D:54:ASP:H	1.83	0.44
6:N:163:PRO:HD2	6:N:216:HIS:CE1	2.53	0.44
3:F:115:ARG:HD3	3:F:115:ARG:HA	1.89	0.43
5:M:167:ILE:HD12	5:M:212:HIS:HB2	2.00	0.43
2:D:76:THR:HG23	2:D:79:TYR:H	1.83	0.43
3:F:40:ILE:HG12	3:F:45:VAL:HG13	2.01	0.43
6:N:133:SER:OG	6:N:218:ASN:O	2.31	0.43
2:D:76:THR:OG1	2:D:77:ASP:N	2.52	0.42
5:M:92:LYS:HD3	5:M:92:LYS:HA	1.89	0.42
3:F:36:TYR:HD2	3:F:112:LEU:HD12	1.85	0.42
6:N:25:THR:HB	6:N:82:ILE:HG12	2.02	0.42
5:M:52:TYR:OH	5:M:89:LYS:NZ	2.41	0.42
5:M:169:ILE:HD12	5:M:182:PRO:HB3	2.01	0.42
2:D:57:ARG:HD2	2:D:57:ARG:HA	1.90	0.42
6:N:22:ALA:HB2	6:N:88:LEU:HD11	2.02	0.42
1:B:43:GLY:O	1:B:47:THR:OG1	2.38	0.42
3:F:35:PRO:HA	3:F:110:PHE:HZ	1.85	0.42
5:M:23:LYS:HB3	5:M:23:LYS:HE3	1.86	0.41
2:D:60:LEU:HD23	2:D:60:LEU:HA	1.88	0.41
3:E:64:LYS:HE2	3:E:64:LYS:HB3	1.95	0.41
3:F:144:LEU:HD12	3:F:144:LEU:HA	1.93	0.41
5:M:262:MET:HG3	6:N:259:ASN:HB3	2.02	0.41
6:N:255:LEU:HA	6:N:258:THR:HG22	2.02	0.41
3:E:56:GLU:OE2	3:E:101:ARG:NH1	2.50	0.41
6:N:37:HIS:CD2	6:N:49:ARG:HH21	2.34	0.41
1:B:51:LEU:HD23	1:B:51:LEU:HA	1.93	0.41
6:N:125:ASP:OD1	6:N:125:ASP:N	2.54	0.41
4:G:33:VAL:HG22	4:G:44:LEU:HD23	2.03	0.41
6:N:255:LEU:HA	6:N:255:LEU:HD12	1.94	0.41
6:N:260:THR:HA	6:N:263:TYR:HB3	2.03	0.40
3:E:104:LYS:HA	3:E:105:PRO:HD3	1.98	0.40
6:N:17:PRO:HB3	6:N:126:LYS:HG2	2.03	0.40
3:E:104:LYS:HE3	3:E:104:LYS:HB3	1.89	0.40

Continued on next page...

Continued from previous page...

Atom-1	Atom-2	Interatomic distance (Å)	Clash overlap (Å)
1:B:30:LYS:HB3	1:B:30:LYS:HE2	1.84	0.40
1:B:39:LEU:HD23	1:B:39:LEU:HA	1.97	0.40
2:D:64:ILE:HG12	2:D:94:GLN:HE21	1.87	0.40

There are no symmetry-related clashes.

5.3 Torsion angles [i](#)

5.3.1 Protein backbone [i](#)

In the following table, the Percentiles column shows the percent Ramachandran outliers of the chain as a percentile score with respect to all PDB entries followed by that with respect to all EM entries.

The Analysed column shows the number of residues for which the backbone conformation was analysed, and the total number of residues.

Mol	Chain	Analysed	Favoured	Allowed	Outliers	Percentiles	
1	A	29/195 (15%)	29 (100%)	0	0	100	100
1	B	26/195 (13%)	23 (88%)	3 (12%)	0	100	100
1	a	29/195 (15%)	29 (100%)	0	0	100	100
1	b	26/195 (13%)	23 (88%)	3 (12%)	0	100	100
2	D	103/171 (60%)	92 (89%)	11 (11%)	0	100	100
2	d	103/171 (60%)	92 (89%)	11 (11%)	0	100	100
3	E	119/207 (58%)	109 (92%)	10 (8%)	0	100	100
3	F	114/207 (55%)	101 (89%)	13 (11%)	0	100	100
3	e	119/207 (58%)	109 (92%)	10 (8%)	0	100	100
3	f	114/207 (55%)	101 (89%)	13 (11%)	0	100	100
4	G	113/182 (62%)	100 (88%)	13 (12%)	0	100	100
4	g	113/182 (62%)	100 (88%)	13 (12%)	0	100	100
5	M	227/307 (74%)	208 (92%)	19 (8%)	0	100	100
5	m	227/307 (74%)	208 (92%)	19 (8%)	0	100	100
6	N	244/331 (74%)	213 (87%)	31 (13%)	0	100	100
6	n	244/331 (74%)	212 (87%)	32 (13%)	0	100	100
All	All	1950/3590 (54%)	1749 (90%)	201 (10%)	0	100	100

There are no Ramachandran outliers to report.

5.3.2 Protein sidechains [i](#)

In the following table, the Percentiles column shows the percent sidechain outliers of the chain as a percentile score with respect to all PDB entries followed by that with respect to all EM entries.

The Analysed column shows the number of residues for which the sidechain conformation was analysed, and the total number of residues.

Mol	Chain	Analysed	Rotameric	Outliers	Percentiles	
1	A	28/154 (18%)	28 (100%)	0	100	100
1	B	25/154 (16%)	25 (100%)	0	100	100
1	a	28/154 (18%)	28 (100%)	0	100	100
1	b	25/154 (16%)	25 (100%)	0	100	100
2	D	93/147 (63%)	93 (100%)	0	100	100
2	d	93/147 (63%)	93 (100%)	0	100	100
3	E	109/177 (62%)	109 (100%)	0	100	100
3	F	106/177 (60%)	106 (100%)	0	100	100
3	e	109/177 (62%)	109 (100%)	0	100	100
3	f	106/177 (60%)	106 (100%)	0	100	100
4	G	97/155 (63%)	97 (100%)	0	100	100
4	g	97/155 (63%)	97 (100%)	0	100	100
5	M	209/272 (77%)	181 (87%)	28 (13%)	4	17
5	m	209/272 (77%)	181 (87%)	28 (13%)	4	17
6	N	231/299 (77%)	204 (88%)	27 (12%)	5	21
6	n	231/299 (77%)	204 (88%)	27 (12%)	5	21
All	All	1796/3070 (58%)	1686 (94%)	110 (6%)	22	44

All (110) residues with a non-rotameric sidechain are listed below:

Mol	Chain	Res	Type
5	M	30	SER
5	M	32	SER
5	M	36	ARG
5	M	40	THR
5	M	44	LEU
5	M	51	SER

Continued on next page...

Continued from previous page...

Mol	Chain	Res	Type
5	M	73	SER
5	M	84	SER
5	M	88	LYS
5	M	97	THR
5	M	104	GLU
5	M	121	THR
5	M	122	ASP
5	M	130	THR
5	M	133	THR
5	M	143	LYS
5	M	145	SER
5	M	153	THR
5	M	174	SER
5	M	178	THR
5	M	185	VAL
5	M	201	GLU
5	M	205	SER
5	M	207	THR
5	M	213	ASP
5	M	215	LYS
5	M	220	THR
5	M	224	VAL
6	N	12	LYS
6	N	15	THR
6	N	18	THR
6	N	29	THR
6	N	30	VAL
6	N	43	GLU
6	N	56	SER
6	N	64	SER
6	N	66	LEU
6	N	92	ASP
6	N	100	THR
6	N	124	THR
6	N	125	ASP
6	N	142	SER
6	N	143	ILE
6	N	147	LYS
6	N	148	LEU
6	N	150	LYS
6	N	153	THR
6	N	173	LYS

Continued on next page...

Continued from previous page...

Mol	Chain	Res	Type
6	N	174	LYS
6	N	175	SER
6	N	189	THR
6	N	200	THR
6	N	204	LYS
6	N	205	SER
6	N	209	GLU
5	m	30	SER
5	m	32	SER
5	m	36	ARG
5	m	40	THR
5	m	44	LEU
5	m	51	SER
5	m	73	SER
5	m	84	SER
5	m	88	LYS
5	m	97	THR
5	m	104	GLU
5	m	121	THR
5	m	122	ASP
5	m	130	THR
5	m	133	THR
5	m	143	LYS
5	m	145	SER
5	m	153	THR
5	m	174	SER
5	m	178	THR
5	m	185	VAL
5	m	201	GLU
5	m	205	SER
5	m	207	THR
5	m	213	ASP
5	m	215	LYS
5	m	220	THR
5	m	224	VAL
6	n	12	LYS
6	n	15	THR
6	n	18	THR
6	n	29	THR
6	n	30	VAL
6	n	43	GLU
6	n	56	SER

Continued on next page...

Continued from previous page...

Mol	Chain	Res	Type
6	n	64	SER
6	n	66	LEU
6	n	92	ASP
6	n	100	THR
6	n	124	THR
6	n	125	ASP
6	n	142	SER
6	n	143	ILE
6	n	147	LYS
6	n	148	LEU
6	n	150	LYS
6	n	153	THR
6	n	173	LYS
6	n	174	LYS
6	n	175	SER
6	n	189	THR
6	n	200	THR
6	n	204	LYS
6	n	205	SER
6	n	209	GLU

Sometimes sidechains can be flipped to improve hydrogen bonding and reduce clashes. All (23) such sidechains are listed below:

Mol	Chain	Res	Type
3	E	33	GLN
3	E	81	HIS
3	E	109	ASN
4	G	29	HIS
5	M	22	GLN
5	M	77	ASN
5	M	102	GLN
5	M	280	ASN
6	N	37	HIS
6	N	42	GLN
6	N	48	GLN
3	e	33	GLN
3	e	81	HIS
3	e	109	ASN
3	f	121	ASN
4	g	29	HIS
5	m	22	GLN
5	m	77	ASN

Continued on next page...

Continued from previous page...

Mol	Chain	Res	Type
5	m	102	GLN
5	m	280	ASN
6	n	37	HIS
6	n	42	GLN
6	n	48	GLN

5.3.3 RNA [i](#)

There are no RNA molecules in this entry.

5.4 Non-standard residues in protein, DNA, RNA chains [i](#)

There are no non-standard protein/DNA/RNA residues in this entry.

5.5 Carbohydrates [i](#)

There are no monosaccharides in this entry.

5.6 Ligand geometry [i](#)

There are no ligands in this entry.

5.7 Other polymers [i](#)

There are no such residues in this entry.

5.8 Polymer linkage issues [i](#)

There are no chain breaks in this entry.

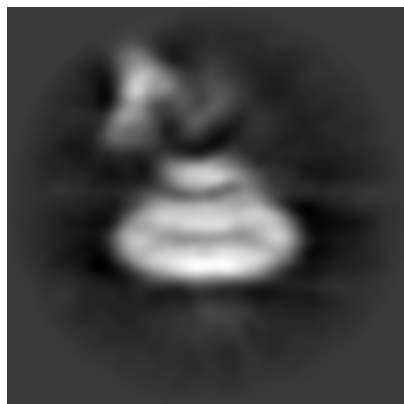
6 Map visualisation [i](#)

This section contains visualisations of the EMDB entry EMD-36156. These allow visual inspection of the internal detail of the map and identification of artifacts.

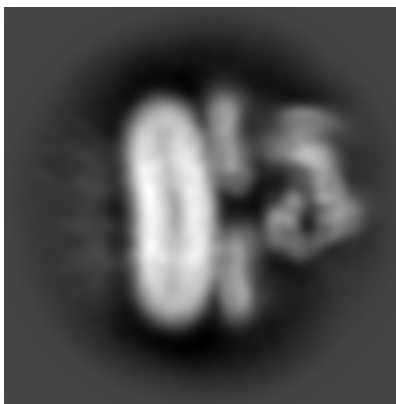
Images derived from a raw map, generated by summing the deposited half-maps, are presented below the corresponding image components of the primary map to allow further visual inspection and comparison with those of the primary map.

6.1 Orthogonal projections [i](#)

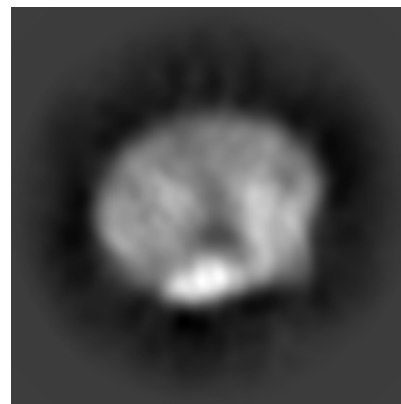
6.1.1 Primary map



X

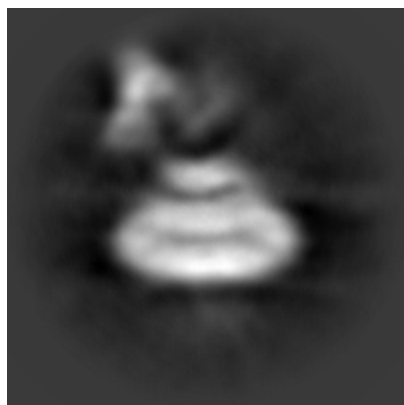


Y

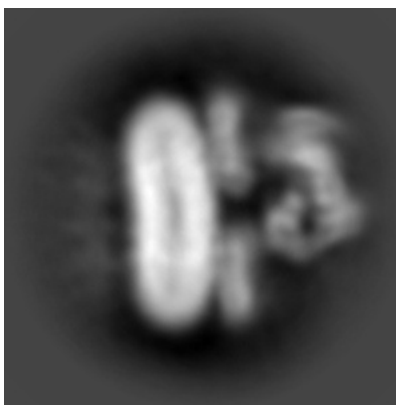


Z

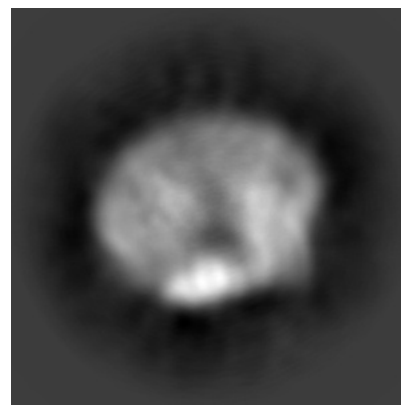
6.1.2 Raw map



X



Y

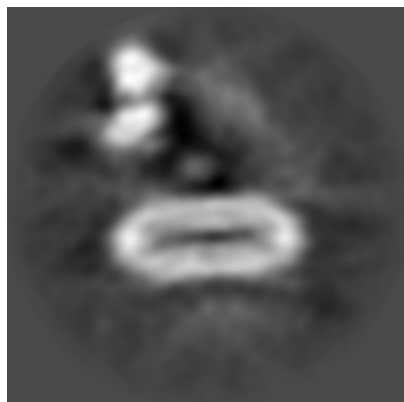


Z

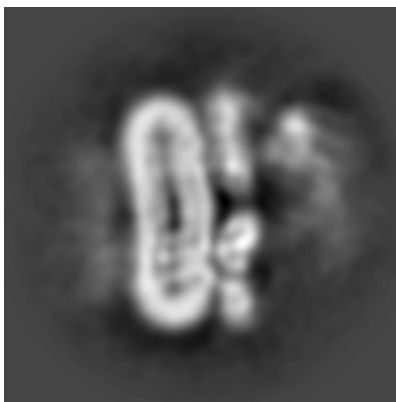
The images above show the map projected in three orthogonal directions.

6.2 Central slices [i](#)

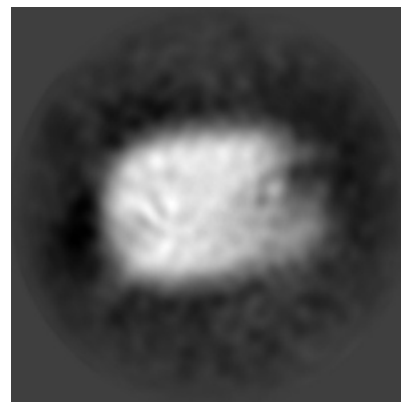
6.2.1 Primary map



X Index: 128

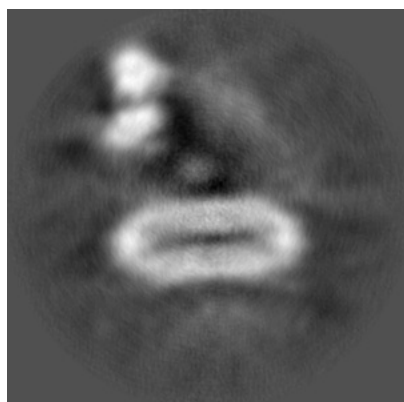


Y Index: 128

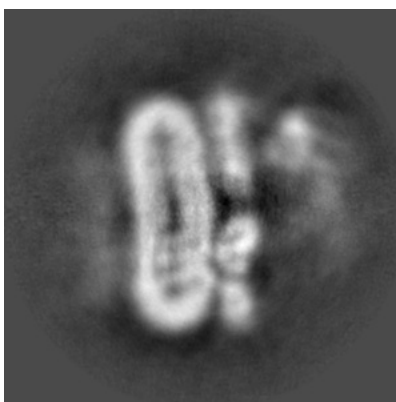


Z Index: 128

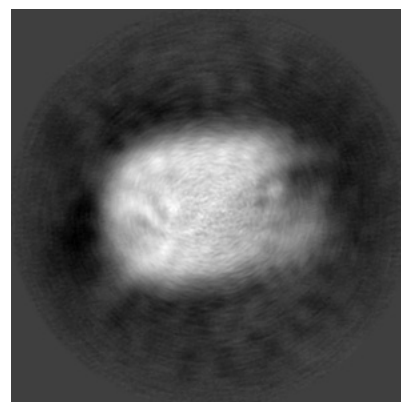
6.2.2 Raw map



X Index: 128



Y Index: 128

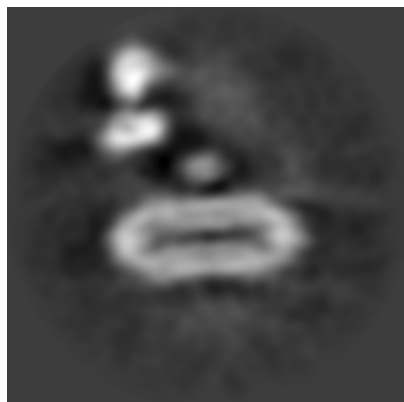


Z Index: 128

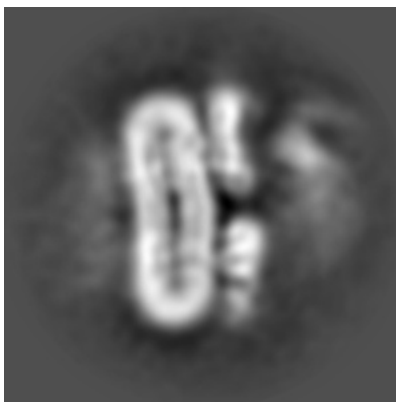
The images above show central slices of the map in three orthogonal directions.

6.3 Largest variance slices [i](#)

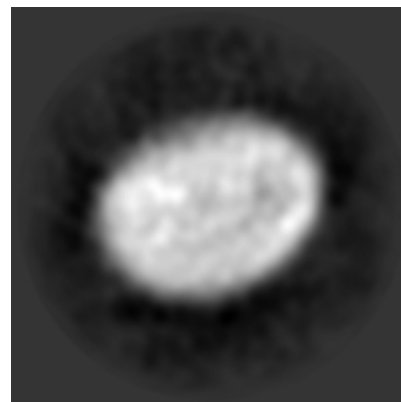
6.3.1 Primary map



X Index: 121

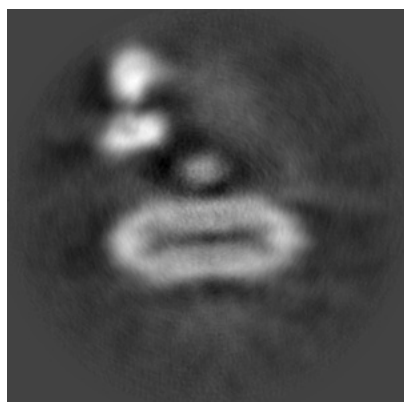


Y Index: 136

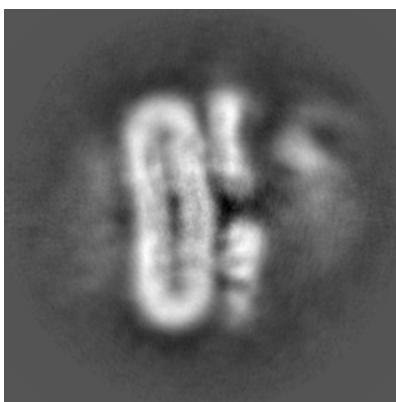


Z Index: 92

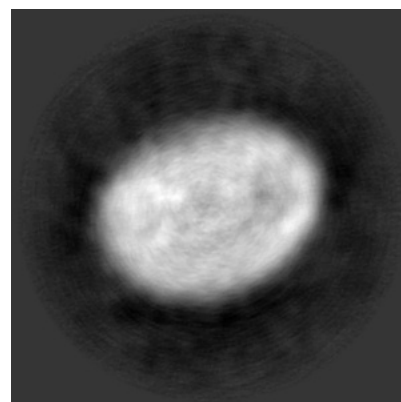
6.3.2 Raw map



X Index: 121



Y Index: 136

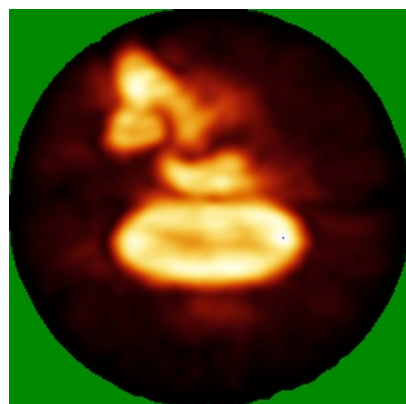


Z Index: 92

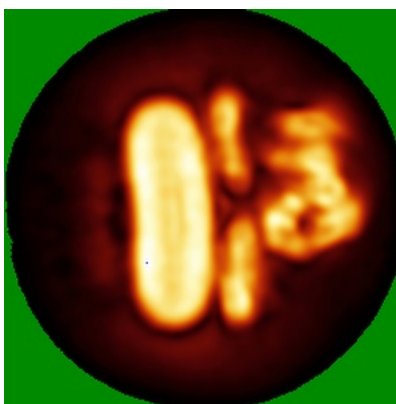
The images above show the largest variance slices of the map in three orthogonal directions.

6.4 Orthogonal standard-deviation projections (False-color) [i](#)

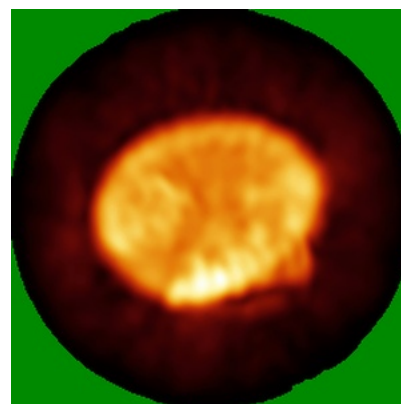
6.4.1 Primary map



X



Y

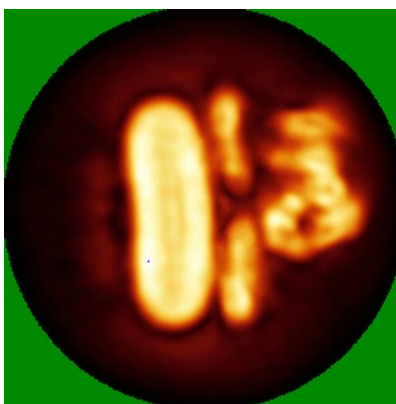


Z

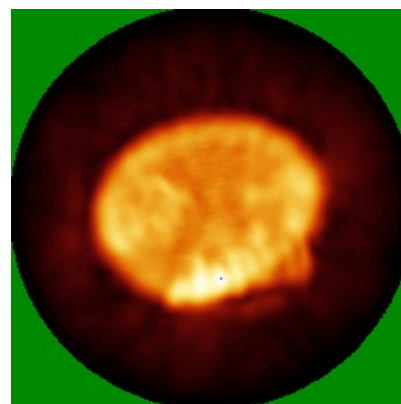
6.4.2 Raw map



X



Y

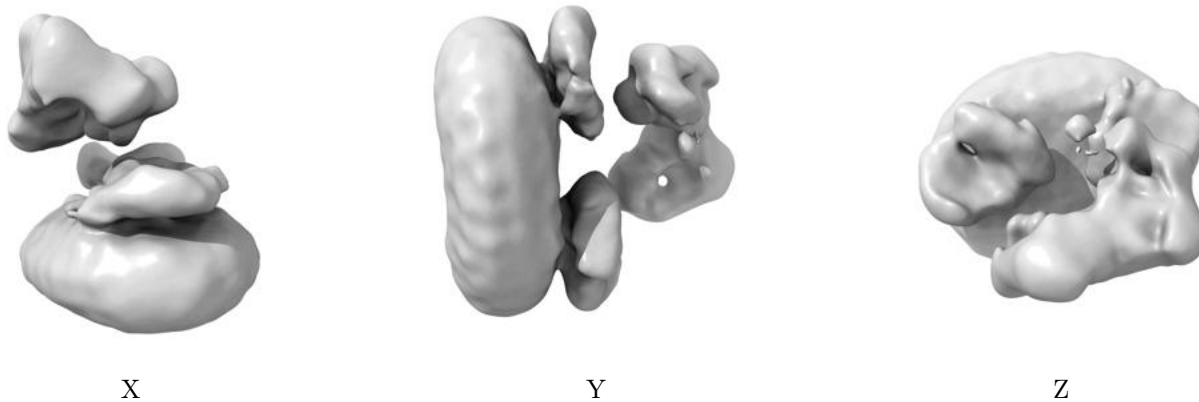


Z

The images above show the map standard deviation projections with false color in three orthogonal directions. Minimum values are shown in green, max in blue, and dark to light orange shades represent small to large values respectively.

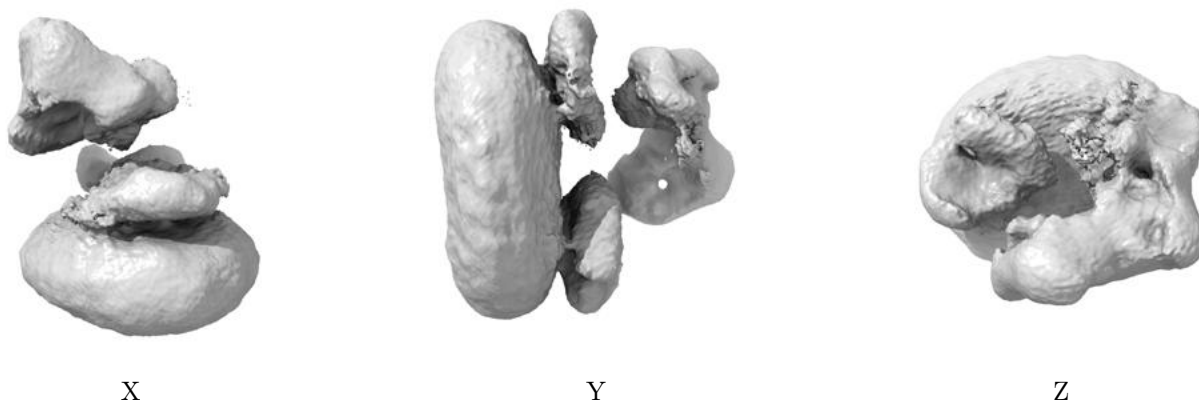
6.5 Orthogonal surface views [i](#)

6.5.1 Primary map



The images above show the 3D surface view of the map at the recommended contour level 0.0046. These images, in conjunction with the slice images, may facilitate assessment of whether an appropriate contour level has been provided.

6.5.2 Raw map



These images show the 3D surface of the raw map. The raw map's contour level was selected so that its surface encloses the same volume as the primary map does at its recommended contour level.

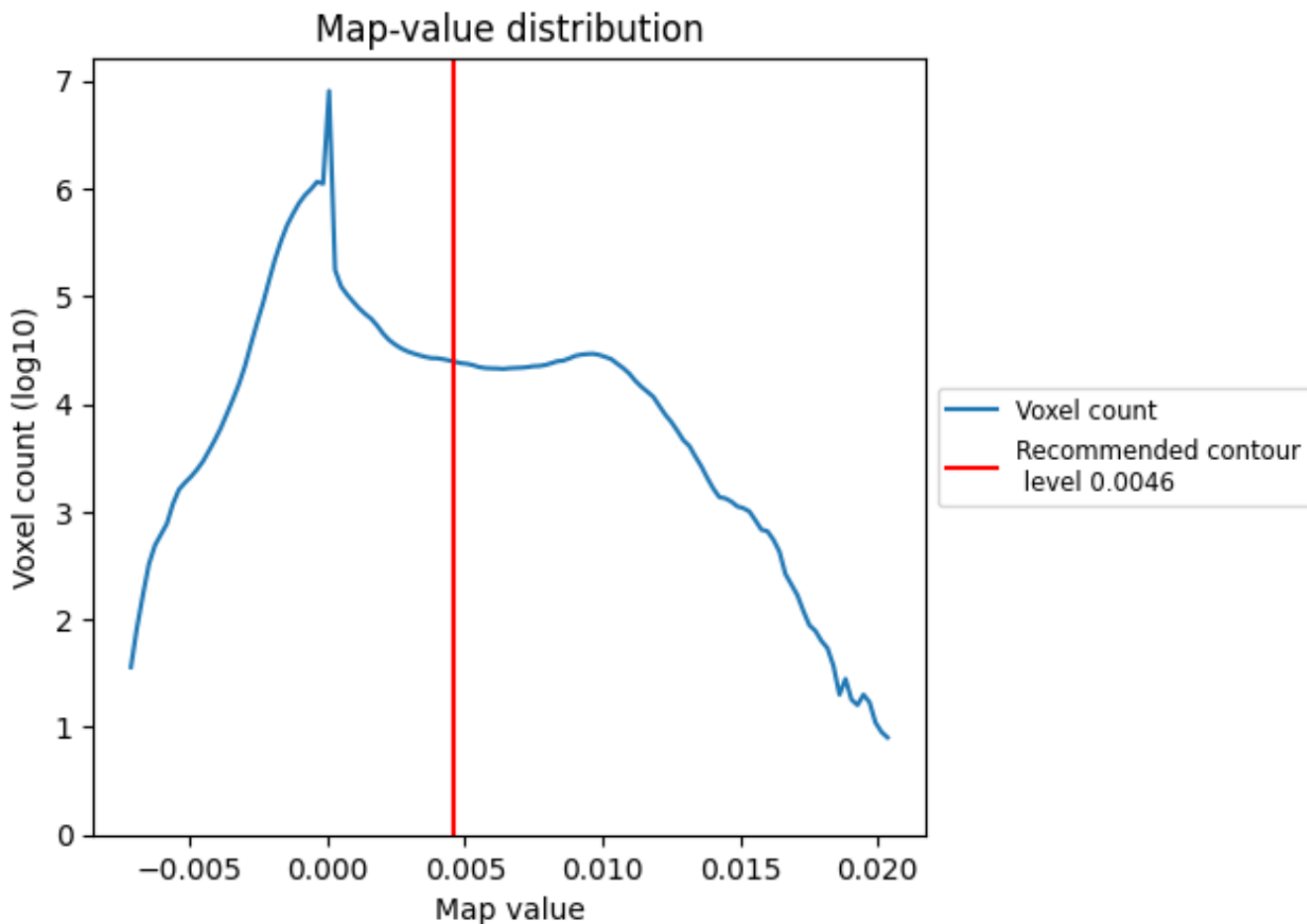
6.6 Mask visualisation [i](#)

This section was not generated. No masks/segmentation were deposited.

7 Map analysis [i](#)

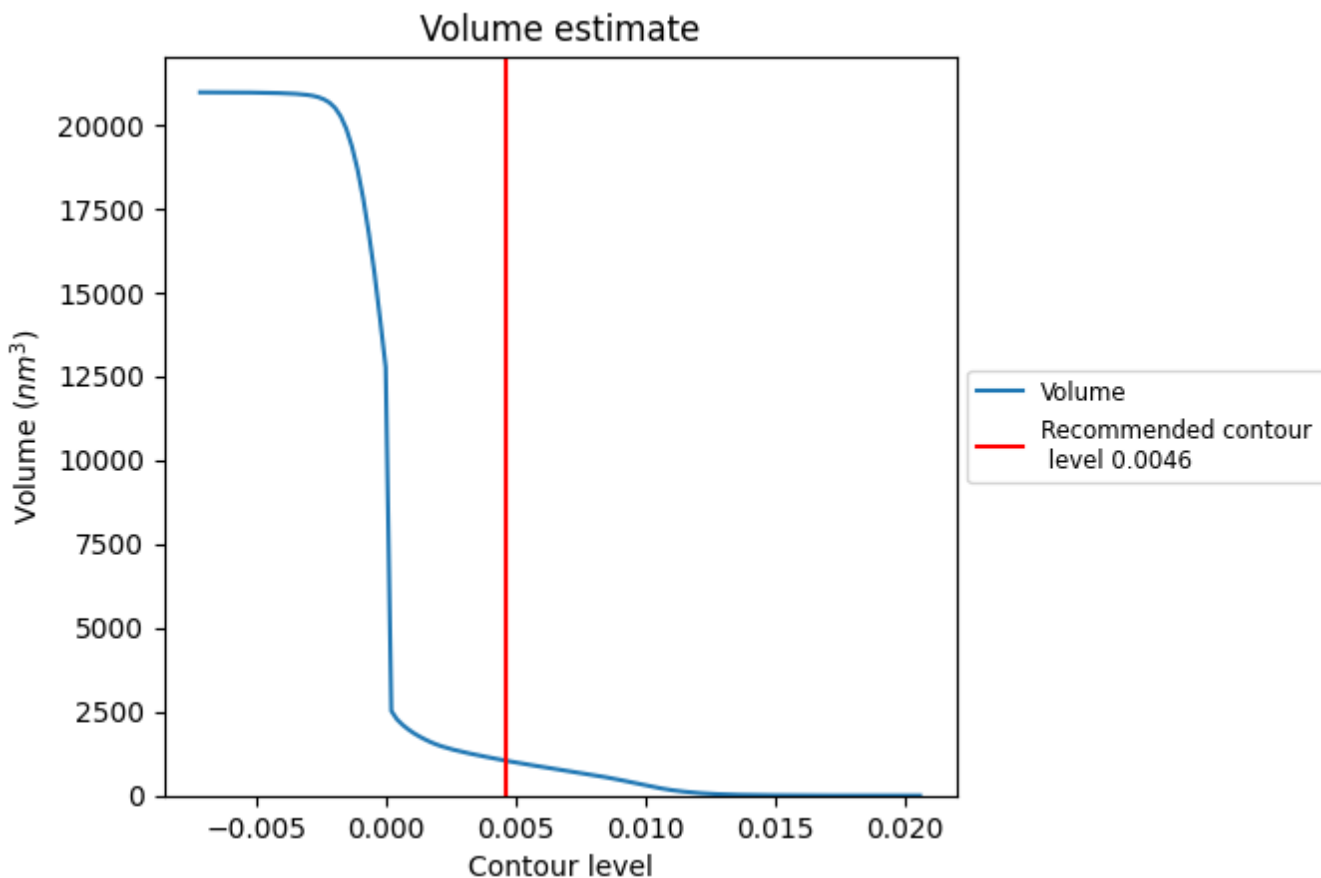
This section contains the results of statistical analysis of the map.

7.1 Map-value distribution [i](#)



The map-value distribution is plotted in 128 intervals along the x-axis. The y-axis is logarithmic. A spike in this graph at zero usually indicates that the volume has been masked.

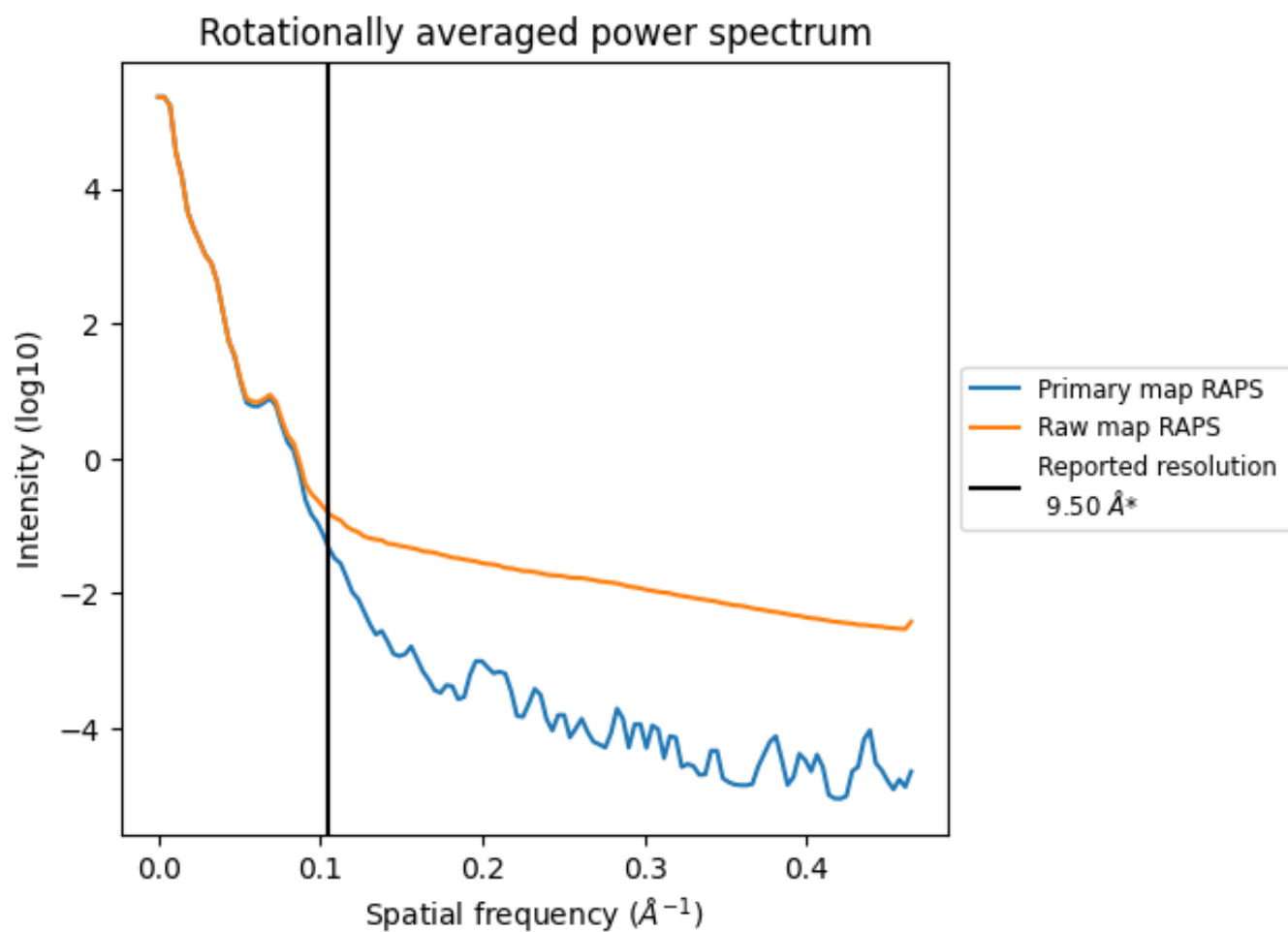
7.2 Volume estimate [\(i\)](#)



The volume at the recommended contour level is 1044 nm³; this corresponds to an approximate mass of 943 kDa.

The volume estimate graph shows how the enclosed volume varies with the contour level. The recommended contour level is shown as a vertical line and the intersection between the line and the curve gives the volume of the enclosed surface at the given level.

7.3 Rotationally averaged power spectrum i

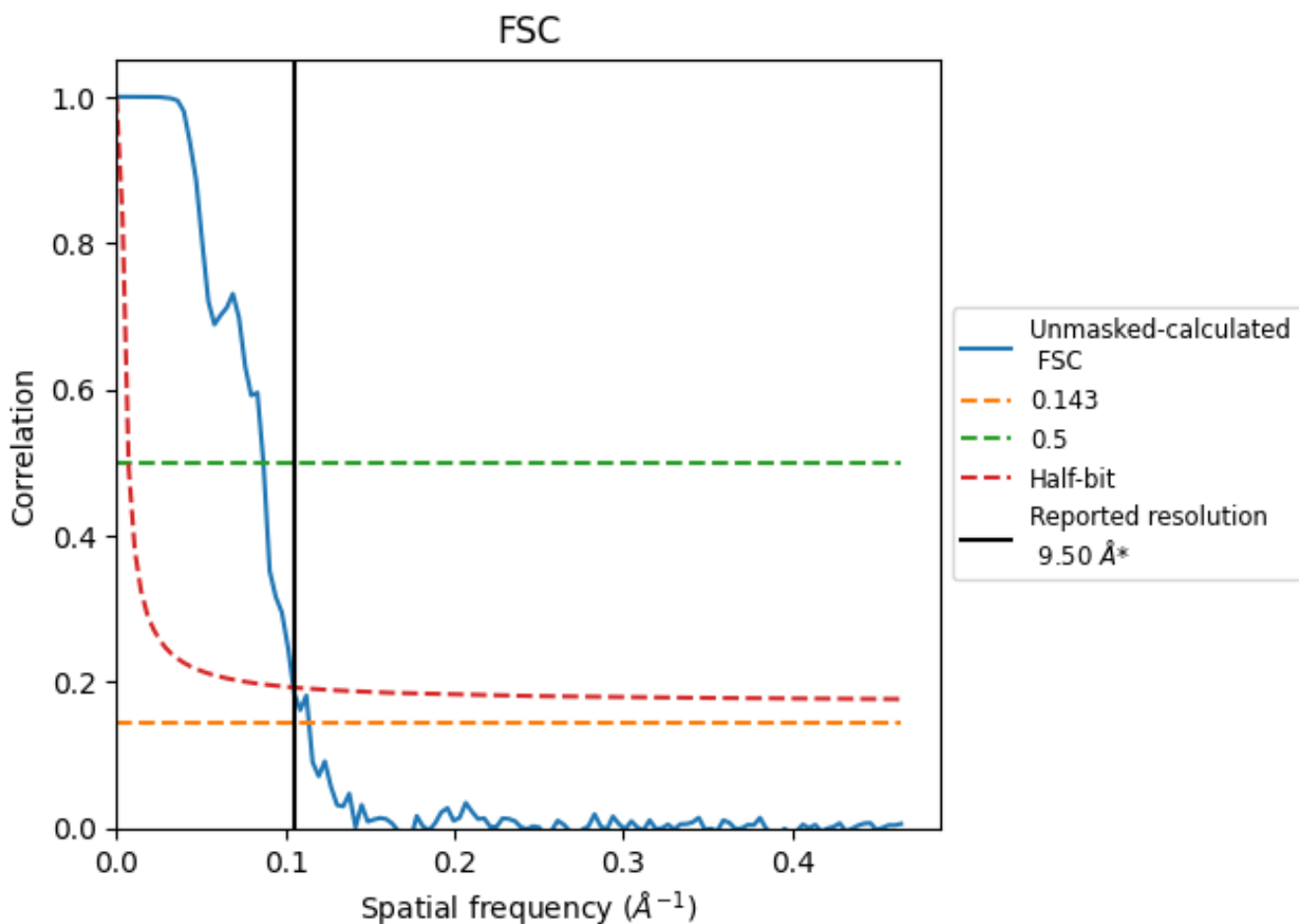


*Reported resolution corresponds to spatial frequency of 0.105 Å⁻¹

8 Fourier-Shell correlation [i](#)

Fourier-Shell Correlation (FSC) is the most commonly used method to estimate the resolution of single-particle and subtomogram-averaged maps. The shape of the curve depends on the imposed symmetry, mask and whether or not the two 3D reconstructions used were processed from a common reference. The reported resolution is shown as a black line. A curve is displayed for the half-bit criterion in addition to lines showing the 0.143 gold standard cut-off and 0.5 cut-off.

8.1 FSC [i](#)



*Reported resolution corresponds to spatial frequency of 0.105 Å⁻¹

8.2 Resolution estimates [i](#)

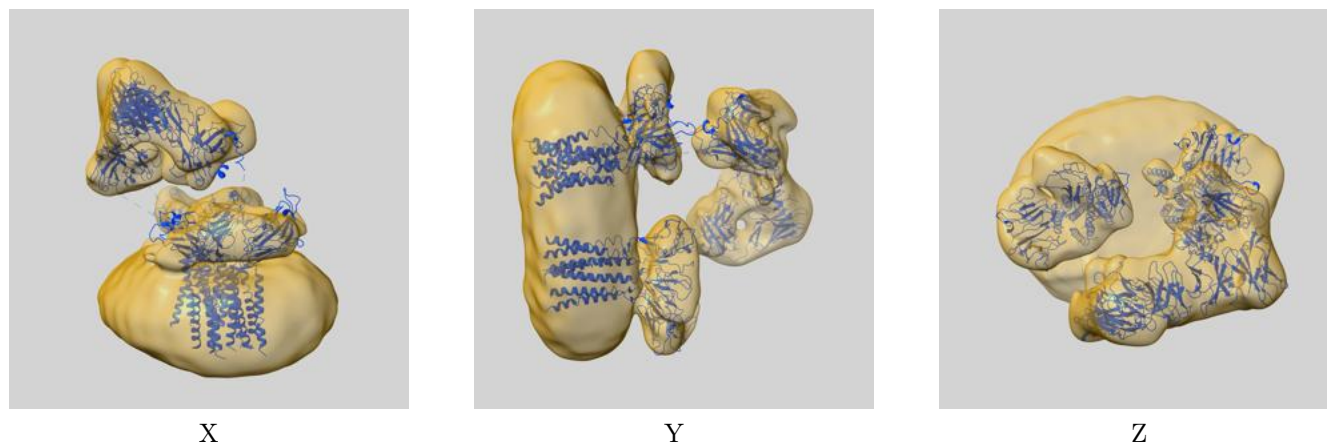
Resolution estimate (Å)	Estimation criterion (FSC cut-off)		
	0.143	0.5	Half-bit
Reported by author	9.50	-	-
Author-provided FSC curve	-	-	-
Unmasked-calculated*	8.78	11.49	9.55

*Resolution estimate based on FSC curve calculated by comparison of deposited half-maps.

9 Map-model fit [i](#)

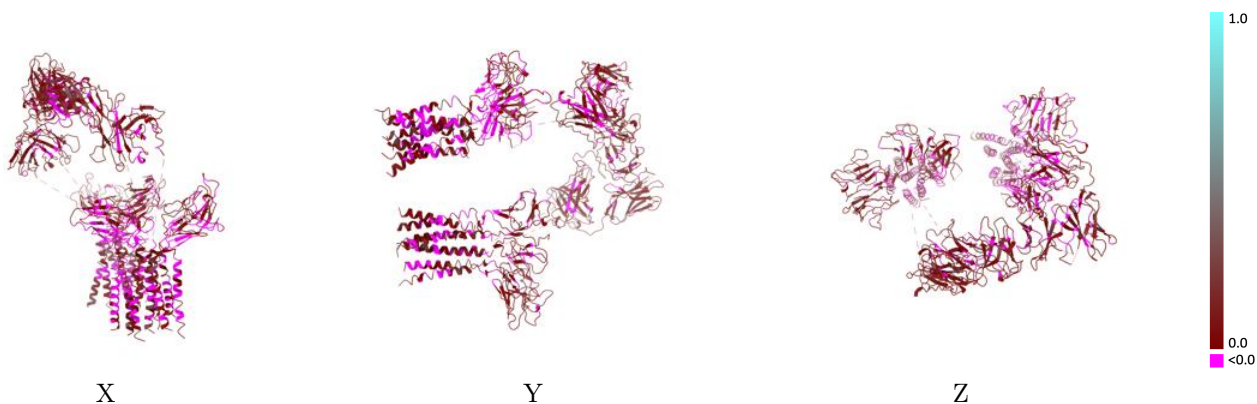
This section contains information regarding the fit between EMDB map EMD-36156 and PDB model 8JCB. Per-residue inclusion information can be found in section 3 on page 15.

9.1 Map-model overlay [i](#)



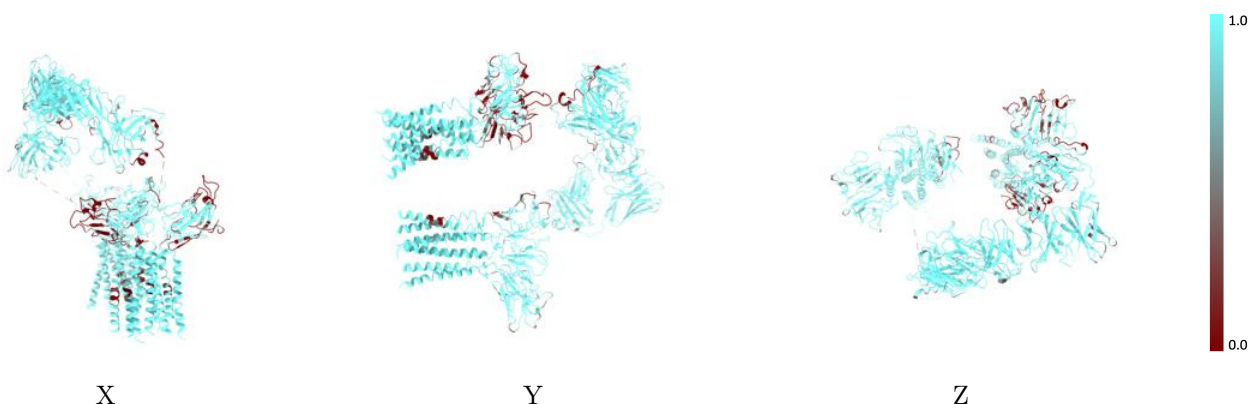
The images above show the 3D surface view of the map at the recommended contour level 0.0046 at 50% transparency in yellow overlaid with a ribbon representation of the model coloured in blue. These images allow for the visual assessment of the quality of fit between the atomic model and the map.

9.2 Q-score mapped to coordinate model [\(i\)](#)



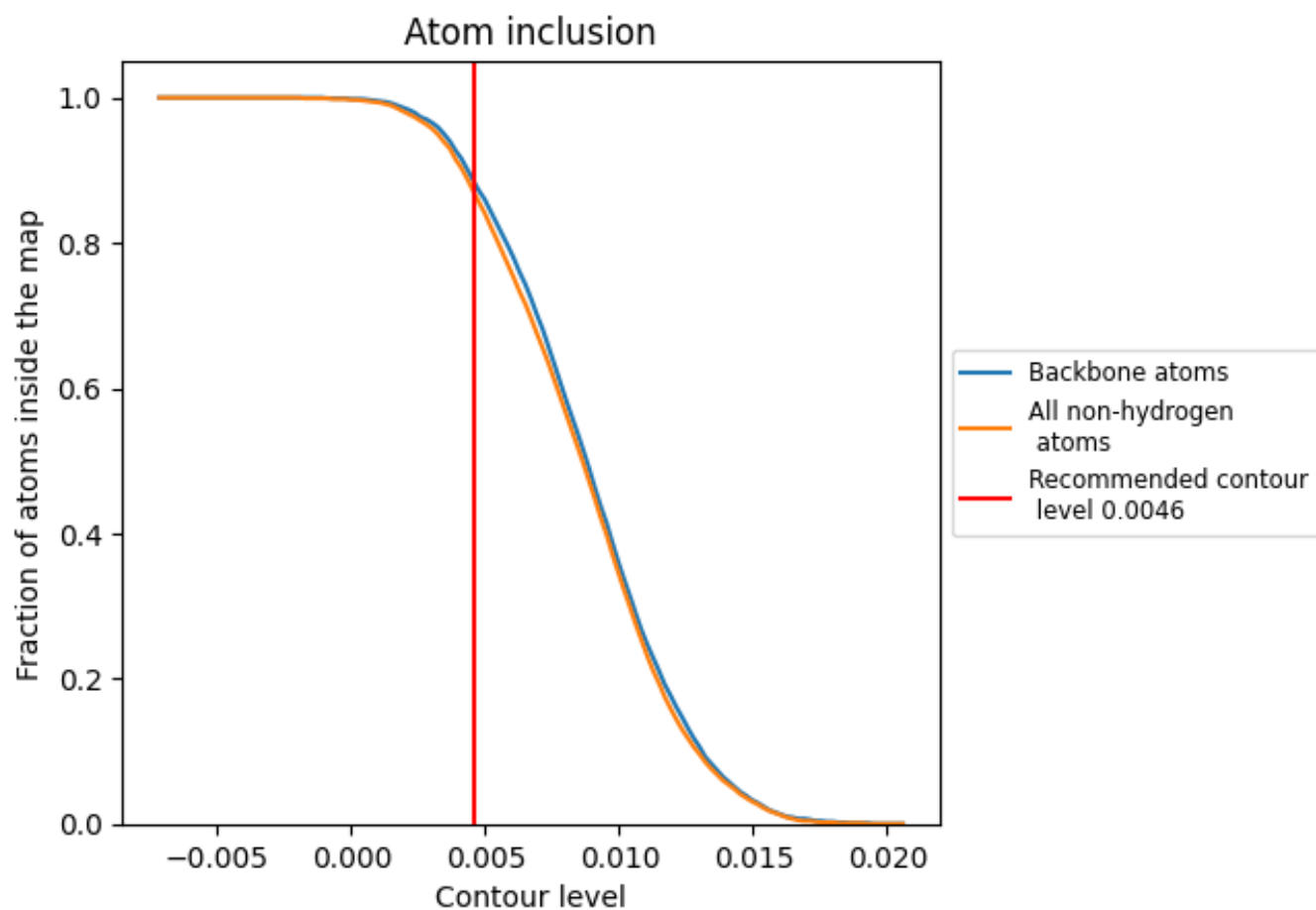
The images above show the model with each residue coloured according to its Q-score. This shows their resolvability in the map with higher Q-score values reflecting better resolvability. Please note: Q-score is calculating the resolvability of atoms, and thus high values are only expected at resolutions at which atoms can be resolved. Low Q-score values may therefore be expected for many entries.

9.3 Atom inclusion mapped to coordinate model [\(i\)](#)



The images above show the model with each residue coloured according to its atom inclusion. This shows to what extent they are inside the map at the recommended contour level (0.0046).



































9.4 Atom inclusion [i](#)



At the recommended contour level, 88% of all backbone atoms, 87% of all non-hydrogen atoms, are inside the map.

9.5 Map-model fit summary

The table lists the average atom inclusion at the recommended contour level (0.0046) and Q-score for the entire model and for each chain.

Chain	Atom inclusion	Q-score
All	 0.8680	 0.0640
A	 0.9960	 0.0640
B	 0.9910	 0.0600
D	 0.9630	 0.0850
E	 0.9490	 0.0870
F	 0.8200	 0.0690
G	 0.9450	 0.0690
M	 0.9620	 0.0890
N	 0.9700	 0.0890
a	 0.8780	 0.0290
b	 0.8740	 0.0590
d	 0.6300	 0.0250
e	 0.7870	 0.0200
f	 0.4730	 0.0020
g	 0.7230	 0.0130
m	 0.8870	 0.0740
n	 0.9250	 0.0750

