



Full wwPDB X-ray Structure Validation Report ⓘ

Dec 2, 2023 – 03:02 pm GMT

PDB ID : 2JGL
Title : Crystal structure of mouse acetylcholinesterase inhibited by aged VX and sarin
Authors : Hornberg, A.; Tunemalm, A.-K.; Ekstrom, F.
Deposited on : 2007-02-13
Resolution : 2.60 Å(reported)

This is a Full wwPDB X-ray Structure Validation Report for a publicly released PDB entry.

We welcome your comments at validation@mail.wwpdb.org

A user guide is available at

<https://www.wwpdb.org/validation/2017/XrayValidationReportHelp>

with specific help available everywhere you see the ⓘ symbol.

The types of validation reports are described at

<http://www.wwpdb.org/validation/2017/FAQs#types>.

The following versions of software and data (see [references ⓘ](#)) were used in the production of this report:

MolProbity : 4.02b-467
Mogul : 1.8.4, CSD as541be (2020)
Xtriage (Phenix) : 1.13
EDS : 2.36
buster-report : 1.1.7 (2018)
Percentile statistics : 20191225.v01 (using entries in the PDB archive December 25th 2019)
Refmac : 5.8.0158
CCP4 : 7.0.044 (Gargrove)
Ideal geometry (proteins) : Engh & Huber (2001)
Ideal geometry (DNA, RNA) : Parkinson et al. (1996)
Validation Pipeline (wwPDB-VP) : 2.36

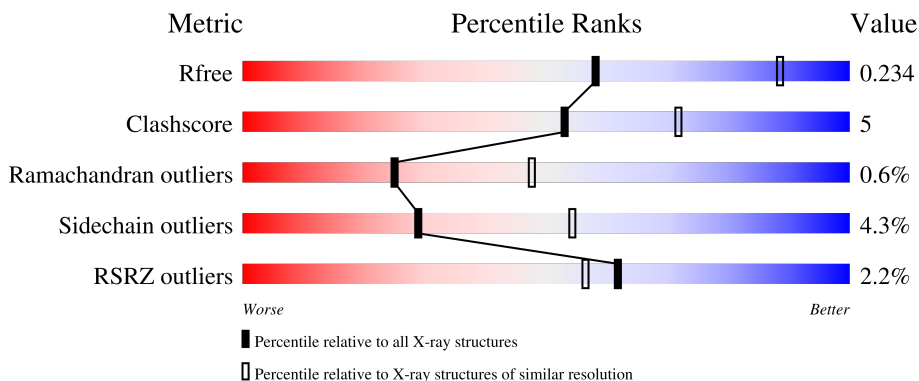
1 Overall quality at a glance

The following experimental techniques were used to determine the structure:

X-RAY DIFFRACTION


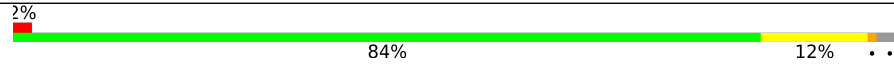
The reported resolution of this entry is 2.60 Å.

Percentile scores (ranging between 0-100) for global validation metrics of the entry are shown in the following graphic. The table shows the number of entries on which the scores are based.



Metric	Whole archive (#Entries)	Similar resolution (#Entries, resolution range(Å))
R_{free}	130704	3163 (2.60-2.60)
Clashscore	141614	3518 (2.60-2.60)
Ramachandran outliers	138981	3455 (2.60-2.60)
Sidechain outliers	138945	3455 (2.60-2.60)
RSRZ outliers	127900	3104 (2.60-2.60)

The table below summarises the geometric issues observed across the polymeric chains and their fit to the electron density. The red, orange, yellow and green segments of the lower bar indicate the fraction of residues that contain outliers for ≥ 3 , 2, 1 and 0 types of geometric quality criteria respectively. A grey segment represents the fraction of residues that are not modelled. The numeric value for each fraction is indicated below the corresponding segment, with a dot representing fractions $\leq 5\%$. The upper red bar (where present) indicates the fraction of residues that have poor fit to the electron density. The numeric value is given above the bar.

Mol	Chain	Length	Quality of chain
1	A	548	
1	B	548	

The following table lists non-polymeric compounds, carbohydrate monomers and non-standard residues in protein, DNA, RNA chains that are outliers for geometric or electron-density-fit criteria:

Mol	Type	Chain	Res	Chirality	Geometry	Clashes	Electron density
2	NAG	A	1543	-	-	-	X
5	P6G	B	1546	-	X	-	-

2 Entry composition [i](#)

There are 6 unique types of molecules in this entry. The entry contains 8712 atoms, of which 0 are hydrogens and 0 are deuteriums.

In the tables below, the ZeroOcc column contains the number of atoms modelled with zero occupancy, the AltConf column contains the number of residues with at least one atom in alternate conformation and the Trace column contains the number of residues modelled with at most 2 atoms.

- Molecule 1 is a protein called ACETYLCHOLINESTERASE.

Mol	Chain	Residues	Atoms					ZeroOcc	AltConf	Trace	
			Total	C	N	O	P				S
1	A	535	Total 4181	C 2680	N 725	O 761	P 1	S 14	0	0	0
1	B	534	Total 4163	C 2671	N 719	O 758	P 1	S 14	0	0	1

- Molecule 2 is 2-acetamido-2-deoxy-beta-D-glucopyranose (three-letter code: NAG) (formula: $C_8H_{15}NO_6$).



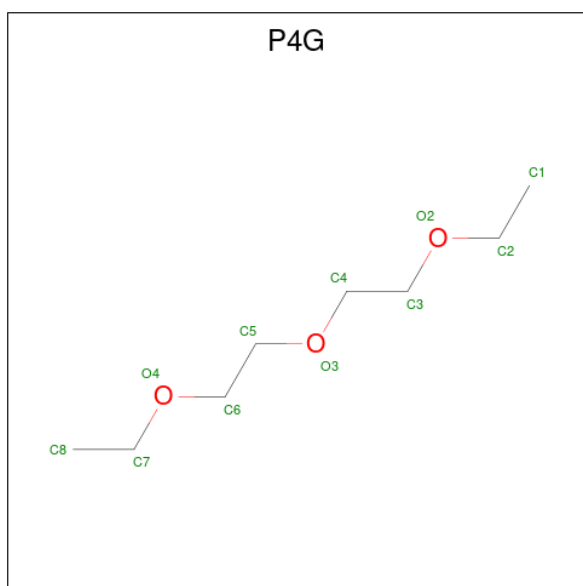
Mol	Chain	Residues	Atoms				ZeroOcc	AltConf
			Total	C	N	O		
2	A	1	Total 14	C 8	N 1	O 5	0	0

- Molecule 3 is TRIETHYLENE GLYCOL (three-letter code: PGE) (formula: $C_6H_{14}O_4$).



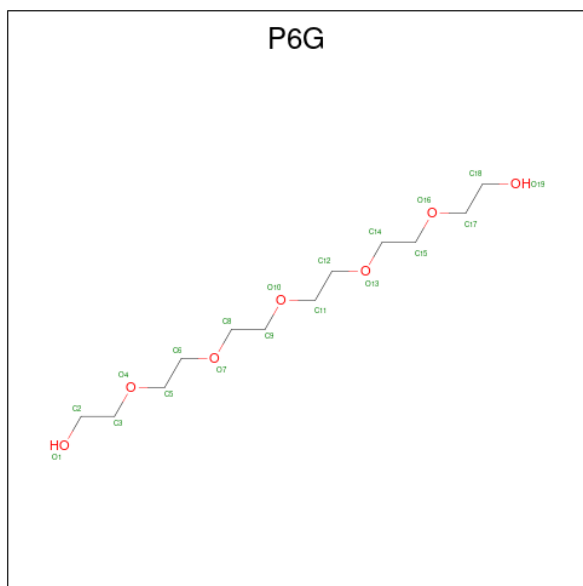
Mol	Chain	Residues	Atoms			ZeroOcc	AltConf
3	A	1	Total	C	O	0	0
			9	6	3		
3	B	1	Total	C	O	0	0
			9	6	3		

- Molecule 4 is 1-ETHOXY-2-(2-ETHOXYETHOXY)ETHANE (three-letter code: P4G) (formula: C₈H₁₈O₃).



Mol	Chain	Residues	Atoms			ZeroOcc	AltConf
4	B	1	Total	C	O	0	0
			11	8	3		

- Molecule 5 is HEXAETHYLENE GLYCOL (three-letter code: P6G) (formula: $C_{12}H_{26}O_7$).



Mol	Chain	Residues	Atoms		ZeroOcc	AltConf	
5	B	1	Total	C	O	0	0
			19	12	7		

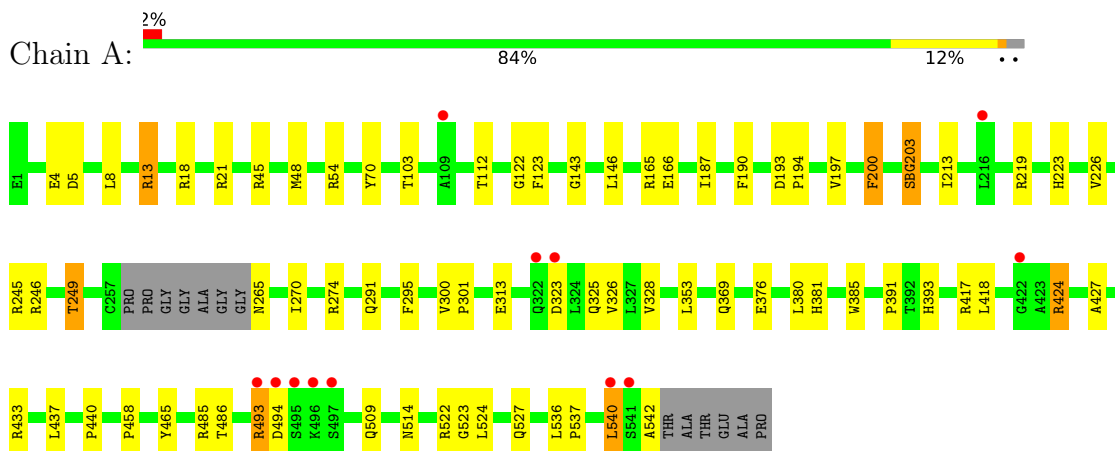
- Molecule 6 is water.

Mol	Chain	Residues	Atoms		ZeroOcc	AltConf
6	A	173	Total	O	0	0
			173	173		
6	B	133	Total	O	0	0
			133	133		

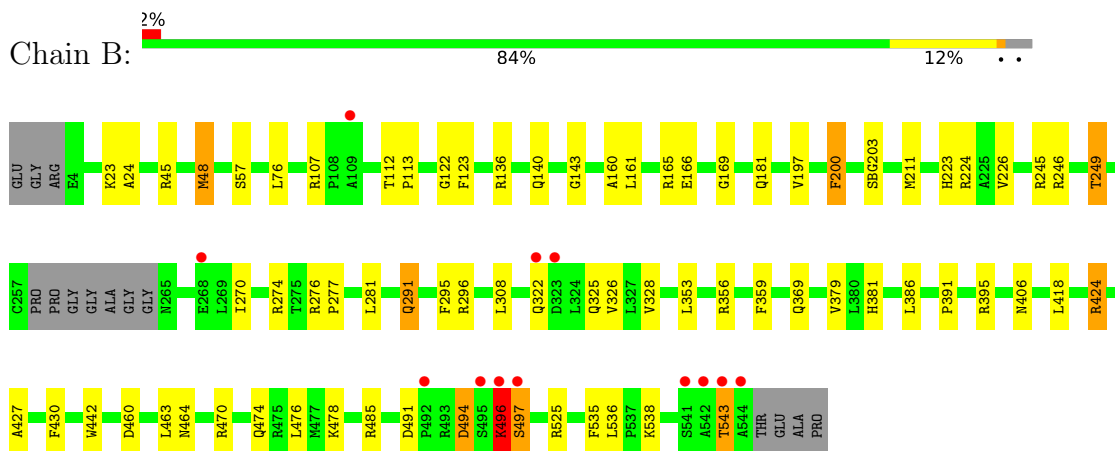
3 Residue-property plots

These plots are drawn for all protein, RNA, DNA and oligosaccharide chains in the entry. The first graphic for a chain summarises the proportions of the various outlier classes displayed in the second graphic. The second graphic shows the sequence view annotated by issues in geometry and electron density. Residues are color-coded according to the number of geometric quality criteria for which they contain at least one outlier: green = 0, yellow = 1, orange = 2 and red = 3 or more. A red dot above a residue indicates a poor fit to the electron density ($RSRZ > 2$). Stretches of 2 or more consecutive residues without any outlier are shown as a green connector. Residues present in the sample, but not in the model, are shown in grey.

- Molecule 1: ACETYLCHOLINESTERASE



- Molecule 1: ACETYLCHOLINESTERASE



4 Data and refinement statistics

Property	Value	Source
Space group	P 21 21 21	Depositor
Cell constants a, b, c, α , β , γ	79.58Å 111.49Å 227.22Å 90.00° 90.00° 90.00°	Depositor
Resolution (Å)	20.44 – 2.60 20.44 – 2.60	Depositor EDS
% Data completeness (in resolution range)	100.0 (20.44-2.60) 100.0 (20.44-2.60)	Depositor EDS
R_{merge}	0.08	Depositor
R_{sym}	(Not available)	Depositor
$\langle I/\sigma(I) \rangle$ ¹	4.69 (at 2.60Å)	Xtrriage
Refinement program	REFMAC 5.2.0019	Depositor
R, R_{free}	0.199 , 0.240 0.194 , 0.234	Depositor DCC
R_{free} test set	1246 reflections (1.98%)	wwPDB-VP
Wilson B-factor (Å ²)	47.5	Xtrriage
Anisotropy	0.032	Xtrriage
Bulk solvent k_{sol} (e/Å ³), B_{sol} (Å ²)	0.35 , 35.3	EDS
L-test for twinning ²	$\langle L \rangle = 0.49$, $\langle L^2 \rangle = 0.32$	Xtrriage
Estimated twinning fraction	No twinning to report.	Xtrriage
F_o, F_c correlation	0.94	EDS
Total number of atoms	8712	wwPDB-VP
Average B, all atoms (Å ²)	41.0	wwPDB-VP

Xtrriage's analysis on translational NCS is as follows: *The largest off-origin peak in the Patterson function is 2.66% of the height of the origin peak. No significant pseudotranslation is detected.*

¹Intensities estimated from amplitudes.

²Theoretical values of $\langle |L| \rangle$, $\langle L^2 \rangle$ for acentric reflections are 0.5, 0.333 respectively for untwinned datasets, and 0.375, 0.2 for perfectly twinned datasets.

5 Model quality

5.1 Standard geometry

Bond lengths and bond angles in the following residue types are not validated in this section: SBG, PGE, P4G, NAG, P6G

The Z score for a bond length (or angle) is the number of standard deviations the observed value is removed from the expected value. A bond length (or angle) with $|Z| > 5$ is considered an outlier worth inspection. RMSZ is the root-mean-square of all Z scores of the bond lengths (or angles).

Mol	Chain	Bond lengths		Bond angles	
		RMSZ	# Z >5	RMSZ	# Z >5
1	A	0.58	0/4293	0.66	0/5864
1	B	0.58	0/4275	0.66	0/5842
All	All	0.58	0/8568	0.66	0/11706

There are no bond length outliers.

There are no bond angle outliers.

There are no chirality outliers.

There are no planarity outliers.

5.2 Too-close contacts

In the following table, the Non-H and H(model) columns list the number of non-hydrogen atoms and hydrogen atoms in the chain respectively. The H(added) column lists the number of hydrogen atoms added and optimized by MolProbity. The Clashes column lists the number of clashes within the asymmetric unit, whereas Symm-Clashes lists symmetry-related clashes.

Mol	Chain	Non-H	H(model)	H(added)	Clashes	Symm-Clashes
1	A	4181	0	4066	48	1
1	B	4163	0	4049	44	1
2	A	14	0	13	0	0
3	A	9	0	11	1	0
3	B	9	0	11	0	0
4	B	11	0	18	0	0
5	B	19	0	24	3	0
6	A	173	0	0	12	0
6	B	133	0	0	8	0
All	All	8712	0	8192	90	1

The all-atom clashscore is defined as the number of clashes found per 1000 atoms (including

hydrogen atoms). The all-atom clashscore for this structure is 5.

All (90) close contacts within the same asymmetric unit are listed below, sorted by their clash magnitude.

Atom-1	Atom-2	Interatomic distance (Å)	Clash overlap (Å)
1:B:496:LYS:HA	6:B:2111:HOH:O	1.52	1.10
1:B:424:ARG:HH11	1:B:424:ARG:HG3	1.15	1.07
1:B:197:VAL:H	1:B:223:HIS:HD2	1.05	1.00
1:B:245:ARG:O	1:B:249:THR:HG23	1.63	0.98
1:B:197:VAL:H	1:B:223:HIS:CD2	1.93	0.87
1:B:424:ARG:HG3	1:B:424:ARG:NH1	1.84	0.81
1:A:197:VAL:H	1:A:223:HIS:HD2	1.28	0.79
1:A:48:MET:HE1	1:A:165:ARG:O	1.85	0.77
1:B:491:ASP:HB3	1:B:494:ASP:HB3	1.65	0.76
1:A:514:ASN:HB2	6:A:2161:HOH:O	1.84	0.76
1:B:424:ARG:HH11	1:B:424:ARG:CG	1.98	0.73
1:B:112:THR:HG21	1:B:143:GLY:O	1.97	0.64
1:A:197:VAL:H	1:A:223:HIS:CD2	2.16	0.63
1:A:369:GLN:HB2	6:A:2111:HOH:O	1.97	0.63
1:B:181:GLN:HG2	6:B:2054:HOH:O	1.99	0.62
1:A:380:LEU:HD23	1:A:385:TRP:HZ2	1.64	0.62
1:A:537:PRO:O	1:A:540:LEU:HB3	1.99	0.62
1:B:369:GLN:HB2	6:B:2092:HOH:O	2.00	0.62
1:A:323:ASP:HA	6:A:2120:HOH:O	1.99	0.61
1:B:381:HIS:CE1	5:B:1546:P6G:H181	2.35	0.61
1:B:460:ASP:HB3	1:B:463:LEU:HD12	1.82	0.60
1:B:296:ARG:NH2	1:B:406:ASN:OD1	2.35	0.59
1:A:265:ASN:HA	6:A:2103:HOH:O	2.02	0.59
1:B:211:MET:HG2	1:B:308:LEU:HD21	1.84	0.59
1:A:245:ARG:O	1:A:249:THR:HG22	2.03	0.58
1:A:166:GLU:HB2	1:A:270:ILE:HD13	1.88	0.56
1:A:245:ARG:O	1:A:249:THR:CG2	2.53	0.56
1:B:291:GLN:HE22	1:B:369:GLN:NE2	2.05	0.55
1:B:470:ARG:O	1:B:474:GLN:HG3	2.07	0.55
1:A:213:ILE:O	1:A:219:ARG:HD3	2.07	0.54
1:B:197:VAL:N	1:B:223:HIS:HD2	1.89	0.54
1:B:353:LEU:HB3	1:B:391:PRO:HB2	1.87	0.54
1:B:328:VAL:O	1:B:427:ALA:HA	2.08	0.54
1:B:166:GLU:HG2	1:B:270:ILE:HD13	1.93	0.50
1:B:200:PHE:CB	1:B:226:VAL:HB	2.41	0.50
1:A:393:HIS:HD2	6:A:2135:HOH:O	1.95	0.49
1:A:523:GLY:HA3	1:B:386:LEU:HD21	1.95	0.49
1:B:76:LEU:HD23	6:B:2083:HOH:O	2.13	0.48

Continued on next page...

Continued from previous page...

Atom-1	Atom-2	Interatomic distance (Å)	Clash overlap (Å)
1:B:430:PHE:HE2	1:B:476:LEU:HD11	1.79	0.48
1:A:540:LEU:C	1:A:542:ALA:H	2.16	0.48
1:B:326:VAL:HG21	1:B:418:LEU:HD13	1.95	0.48
3:A:1544:PGE:H6	6:A:2110:HOH:O	2.13	0.48
1:A:380:LEU:HD23	1:A:385:TRP:CZ2	2.46	0.47
1:A:313:GLU:HB2	6:A:2089:HOH:O	2.13	0.47
1:A:433:ARG:CZ	1:A:437:LEU:HD23	2.44	0.47
1:B:496:LYS:HB3	6:B:2110:HOH:O	2.14	0.47
1:A:274:ARG:HD3	6:A:2105:HOH:O	2.14	0.47
1:A:326:VAL:HG11	1:A:418:LEU:HD23	1.96	0.46
1:A:485:ARG:NH1	6:A:2156:HOH:O	2.47	0.46
1:B:24:ALA:HB3	1:B:140:GLN:HG3	1.97	0.46
1:B:291:GLN:HE21	1:B:291:GLN:HB2	1.62	0.46
1:B:496:LYS:CB	6:B:2110:HOH:O	2.64	0.46
1:A:458:PRO:HA	1:A:465:TYR:CD2	2.51	0.46
1:A:381:HIS:HA	5:B:1546:P6G:H31	1.98	0.46
1:B:160:ALA:HB2	1:B:169:GLY:CA	2.46	0.45
1:A:527:GLN:HE21	5:B:1546:P6G:H171	1.81	0.45
1:A:328:VAL:O	1:A:427:ALA:HA	2.17	0.45
1:B:166:GLU:HG2	1:B:270:ILE:CD1	2.48	0.44
1:B:224:ARG:HG2	1:B:325:GLN:HB2	1.98	0.44
1:B:359:PHE:HE1	1:B:379:VAL:HG13	1.82	0.44
1:A:200:PHE:CB	1:A:226:VAL:HB	2.48	0.44
1:B:200:PHE:HB2	1:B:226:VAL:HB	1.98	0.44
1:A:103:THR:HG21	1:A:190:PHE:HB3	1.99	0.44
1:B:113:PRO:HG2	1:B:485:ARG:HG2	2.00	0.44
1:A:5:ASP:HB3	1:A:8:LEU:HD12	2.00	0.44
1:B:395:ARG:CZ	1:B:442:TRP:HB2	2.48	0.43
1:A:48:MET:HE1	1:A:166:GLU:HA	2.01	0.43
1:A:300:VAL:HB	1:A:301:PRO:HD2	2.01	0.43
1:B:276:ARG:HA	1:B:277:PRO:HD2	1.91	0.42
1:A:219:ARG:HD2	1:A:219:ARG:HA	1.77	0.42
1:A:424:ARG:HD2	6:A:2139:HOH:O	2.19	0.42
1:A:193:ASP:HA	1:A:194:PRO:HD2	1.91	0.42
1:A:353:LEU:HB3	1:A:391:PRO:HB2	2.00	0.42
1:A:509:GLN:HB2	6:A:2160:HOH:O	2.18	0.42
1:A:323:ASP:HB2	6:A:2121:HOH:O	2.20	0.42
1:B:464:ASN:ND2	6:B:2106:HOH:O	2.47	0.42
1:A:433:ARG:NH2	1:A:440:PRO:O	2.52	0.42
1:A:112:THR:HG21	1:A:143:GLY:O	2.20	0.41
1:A:122:GLY:H	1:A:203:SBG:H1	1.68	0.41

Continued on next page...

Continued from previous page...

Atom-1	Atom-2	Interatomic distance (Å)	Clash overlap (Å)
1:A:417:ARG:HA	1:A:417:ARG:HD2	1.85	0.41
1:A:522:ARG:HE	1:A:522:ARG:HB3	1.64	0.41
1:A:376:GLU:CG	1:B:538:LYS:HE3	2.50	0.41
1:B:274:ARG:HD3	6:B:2073:HOH:O	2.20	0.41
1:A:122:GLY:O	1:A:123:PHE:HB2	2.21	0.41
1:A:187:ILE:HD12	1:A:187:ILE:HA	1.95	0.41
1:A:4:GLU:OE2	1:A:18:ARG:HD3	2.21	0.41
1:A:485:ARG:HB3	1:A:486:THR:HG23	2.03	0.41
1:B:48:MET:HE1	1:B:165:ARG:O	2.21	0.41
1:A:380:LEU:HD13	1:B:535:PHE:HB2	2.02	0.41
1:B:122:GLY:O	1:B:123:PHE:HB2	2.22	0.40

All (1) symmetry-related close contacts are listed below. The label for Atom-2 includes the symmetry operator and encoded unit-cell translations to be applied.

Atom-1	Atom-2	Interatomic distance (Å)	Clash overlap (Å)
1:A:13:ARG:NH1	1:B:57:SER:O[2_555]	2.03	0.17

5.3 Torsion angles [i](#)

5.3.1 Protein backbone [i](#)

In the following table, the Percentiles column shows the percent Ramachandran outliers of the chain as a percentile score with respect to all X-ray entries followed by that with respect to entries of similar resolution.

The Analysed column shows the number of residues for which the backbone conformation was analysed, and the total number of residues.

Mol	Chain	Analysed	Favoured	Allowed	Outliers	Percentiles	
1	A	530/548 (97%)	501 (94%)	26 (5%)	3 (1%)	25	47
1	B	529/548 (96%)	507 (96%)	19 (4%)	3 (1%)	25	47
All	All	1059/1096 (97%)	1008 (95%)	45 (4%)	6 (1%)	25	47

All (6) Ramachandran outliers are listed below:

Mol	Chain	Res	Type
1	A	494	ASP
1	B	496	LYS

Continued on next page...

Continued from previous page...

Mol	Chain	Res	Type
1	B	543	THR
1	B	497	SER
1	A	493	ARG
1	A	540	LEU

5.3.2 Protein sidechains [i](#)

In the following table, the Percentiles column shows the percent sidechain outliers of the chain as a percentile score with respect to all X-ray entries followed by that with respect to entries of similar resolution.

The Analysed column shows the number of residues for which the sidechain conformation was analysed, and the total number of residues.

Mol	Chain	Analysed	Rotameric	Outliers	Percentiles	
1	A	438/445 (98%)	422 (96%)	16 (4%)	34	60
1	B	437/445 (98%)	415 (95%)	22 (5%)	24	47
All	All	875/890 (98%)	837 (96%)	38 (4%)	29	54

All (38) residues with a non-rotameric sidechain are listed below:

Mol	Chain	Res	Type
1	A	13	ARG
1	A	21	ARG
1	A	45	ARG
1	A	54	ARG
1	A	70	TYR
1	A	146	LEU
1	A	200	PHE
1	A	246	ARG
1	A	249	THR
1	A	291	GLN
1	A	295	PHE
1	A	325	GLN
1	A	424	ARG
1	A	493	ARG
1	A	524	LEU
1	A	536	LEU
1	B	23	LYS
1	B	45	ARG
1	B	48	MET

Continued on next page...

Continued from previous page...

Mol	Chain	Res	Type
1	B	107	ARG
1	B	136	ARG
1	B	161	LEU
1	B	200	PHE
1	B	246	ARG
1	B	249	THR
1	B	281	LEU
1	B	291	GLN
1	B	295	PHE
1	B	322	GLN
1	B	356	ARG
1	B	424	ARG
1	B	478	LYS
1	B	494	ASP
1	B	496	LYS
1	B	497	SER
1	B	525	ARG
1	B	536	LEU
1	B	543	THR

Sometimes sidechains can be flipped to improve hydrogen bonding and reduce clashes. All (5) such sidechains are listed below:

Mol	Chain	Res	Type
1	A	223	HIS
1	A	287	HIS
1	A	291	GLN
1	B	223	HIS
1	B	291	GLN

5.3.3 RNA [i](#)

There are no RNA molecules in this entry.

5.4 Non-standard residues in protein, DNA, RNA chains [i](#)

2 non-standard protein/DNA/RNA residues are modelled in this entry.

In the following table, the Counts columns list the number of bonds (or angles) for which Mogul statistics could be retrieved, the number of bonds (or angles) that are observed in the model and the number of bonds (or angles) that are defined in the Chemical Component Dictionary. The Link column lists molecule types, if any, to which the group is linked. The Z score for a bond

length (or angle) is the number of standard deviations the observed value is removed from the expected value. A bond length (or angle) with $|Z| > 2$ is considered an outlier worth inspection. RMSZ is the root-mean-square of all Z scores of the bond lengths (or angles).

Mol	Type	Chain	Res	Link	Bond lengths			Bond angles		
					Counts	RMSZ	# Z > 2	Counts	RMSZ	# Z > 2
1	SBG	B	203	1	8,9,10	1.26	1 (12%)	5,12,14	4.11	4 (80%)
1	SBG	A	203	1	8,9,10	1.45	1 (12%)	5,12,14	3.18	3 (60%)

In the following table, the Chirals column lists the number of chiral outliers, the number of chiral centers analysed, the number of these observed in the model and the number defined in the Chemical Component Dictionary. Similar counts are reported in the Torsion and Rings columns. '-' means no outliers of that kind were identified.

Mol	Type	Chain	Res	Link	Chirals	Torsions	Rings
1	SBG	B	203	1	-	2/5/8/10	-
1	SBG	A	203	1	-	1/5/8/10	-

All (2) bond length outliers are listed below:

Mol	Chain	Res	Type	Atoms	Z	Observed(Å)	Ideal(Å)
1	A	203	SBG	P1-OG	3.03	1.61	1.57
1	B	203	SBG	P1-OG	2.49	1.61	1.57

All (7) bond angle outliers are listed below:

Mol	Chain	Res	Type	Atoms	Z	Observed(°)	Ideal(°)
1	B	203	SBG	OG-P1-C1	-6.65	87.74	105.44
1	A	203	SBG	OG-P1-C1	-5.09	91.90	105.44
1	A	203	SBG	OG-CB-CA	4.20	112.23	108.14
1	B	203	SBG	OG-CB-CA	4.13	112.17	108.14
1	B	203	SBG	OG-P1-O2	3.34	122.26	111.76
1	B	203	SBG	O1-P1-O2	3.33	119.69	111.58
1	A	203	SBG	O1-P1-O2	2.62	117.95	111.58

There are no chirality outliers.

All (3) torsion outliers are listed below:

Mol	Chain	Res	Type	Atoms
1	B	203	SBG	CB-OG-P1-O2
1	A	203	SBG	N-CA-CB-OG
1	B	203	SBG	N-CA-CB-OG

There are no ring outliers.

1 monomer is involved in 1 short contact:

Mol	Chain	Res	Type	Clashes	Symm-Clashes
1	A	203	SBG	1	0

5.5 Carbohydrates [i](#)

There are no monosaccharides in this entry.

5.6 Ligand geometry [i](#)

5 ligands are modelled in this entry.

In the following table, the Counts columns list the number of bonds (or angles) for which Mogul statistics could be retrieved, the number of bonds (or angles) that are observed in the model and the number of bonds (or angles) that are defined in the Chemical Component Dictionary. The Link column lists molecule types, if any, to which the group is linked. The Z score for a bond length (or angle) is the number of standard deviations the observed value is removed from the expected value. A bond length (or angle) with $|Z| > 2$ is considered an outlier worth inspection. RMSZ is the root-mean-square of all Z scores of the bond lengths (or angles).

Mol	Type	Chain	Res	Link	Bond lengths			Bond angles		
					Counts	RMSZ	# Z > 2	Counts	RMSZ	# Z > 2
3	PGE	B	1544	-	8,8,9	1.24	1 (12%)	7,7,8	0.59	0
2	NAG	A	1543	1	14,14,15	0.81	1 (7%)	17,19,21	2.12	5 (29%)
5	P6G	B	1546	-	18,18,18	1.73	5 (27%)	17,17,17	2.18	10 (58%)
3	PGE	A	1544	-	8,8,9	0.55	0	7,7,8	0.32	0
4	P4G	B	1545	-	10,10,10	0.64	0	9,9,9	0.32	0

In the following table, the Chirals column lists the number of chiral outliers, the number of chiral centers analysed, the number of these observed in the model and the number defined in the Chemical Component Dictionary. Similar counts are reported in the Torsion and Rings columns. '-' means no outliers of that kind were identified.

Mol	Type	Chain	Res	Link	Chirals	Torsions	Rings
3	PGE	B	1544	-	-	5/6/6/7	-
2	NAG	A	1543	1	-	3/6/23/26	0/1/1/1
5	P6G	B	1546	-	-	7/16/16/16	-
3	PGE	A	1544	-	-	4/6/6/7	-
4	P4G	B	1545	-	-	3/8/8/8	-

All (7) bond length outliers are listed below:

Mol	Chain	Res	Type	Atoms	Z	Observed(Å)	Ideal(Å)
5	B	1546	P6G	C9-C8	-3.01	1.33	1.49
5	B	1546	P6G	C3-C2	-2.85	1.34	1.49
5	B	1546	P6G	C15-C14	-2.85	1.34	1.49
3	B	1544	PGE	C1-C2	2.74	1.68	1.46
5	B	1546	P6G	C17-C18	-2.69	1.35	1.49
5	B	1546	P6G	C6-C5	-2.63	1.35	1.49
2	A	1543	NAG	C1-C2	2.02	1.55	1.52

All (15) bond angle outliers are listed below:

Mol	Chain	Res	Type	Atoms	Z	Observed(°)	Ideal(°)
2	A	1543	NAG	C1-O5-C5	6.84	121.46	112.19
5	B	1546	P6G	O7-C6-C5	3.18	124.72	110.39
5	B	1546	P6G	O4-C5-C6	3.00	123.91	110.39
5	B	1546	P6G	O13-C14-C15	2.81	123.08	110.39
5	B	1546	P6G	O7-C8-C9	2.77	122.87	110.39
5	B	1546	P6G	O16-C15-C14	2.64	122.30	110.39
5	B	1546	P6G	O4-C3-C2	2.47	120.93	110.07
2	A	1543	NAG	O5-C5-C6	2.38	110.94	107.20
5	B	1546	P6G	C17-O16-C15	2.32	123.35	113.29
2	A	1543	NAG	C2-N2-C7	-2.19	119.79	122.90
5	B	1546	P6G	O19-C18-C17	2.18	124.48	111.81
2	A	1543	NAG	O3-C3-C2	2.18	113.98	109.47
5	B	1546	P6G	O10-C9-C8	2.14	120.05	110.39
5	B	1546	P6G	C5-O4-C3	2.07	122.27	113.29
2	A	1543	NAG	O4-C4-C5	2.00	114.28	109.30

There are no chirality outliers.

All (22) torsion outliers are listed below:

Mol	Chain	Res	Type	Atoms
2	A	1543	NAG	C8-C7-N2-C2
2	A	1543	NAG	O7-C7-N2-C2
3	A	1544	PGE	O2-C3-C4-O3
3	B	1544	PGE	O2-C3-C4-O3
5	B	1546	P6G	O13-C14-C15-O16
5	B	1546	P6G	O4-C5-C6-O7
5	B	1546	P6G	O7-C8-C9-O10
4	B	1545	P4G	O2-C3-C4-O3
3	B	1544	PGE	O3-C5-C6-O4
3	A	1544	PGE	C1-C2-O2-C3

Continued on next page...

Continued from previous page...

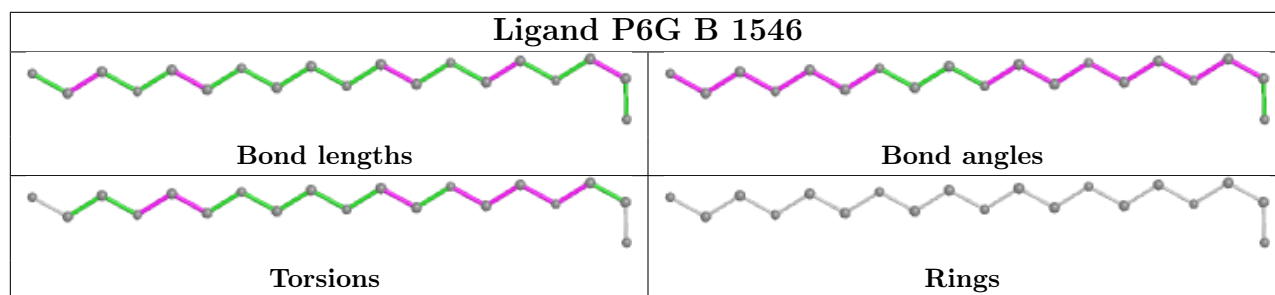
Mol	Chain	Res	Type	Atoms
3	B	1544	PGE	C1-C2-O2-C3
4	B	1545	P4G	C6-C5-O3-C4
5	B	1546	P6G	C2-C3-O4-C5
3	B	1544	PGE	C3-C4-O3-C5
2	A	1543	NAG	C4-C5-C6-O6
5	B	1546	P6G	C6-C5-O4-C3
3	B	1544	PGE	C4-C3-O2-C2
3	A	1544	PGE	C4-C3-O2-C2
5	B	1546	P6G	C5-C6-O7-C8
5	B	1546	P6G	C14-C15-O16-C17
3	A	1544	PGE	C3-C4-O3-C5
4	B	1545	P4G	C8-C7-O4-C6

There are no ring outliers.

2 monomers are involved in 4 short contacts:

Mol	Chain	Res	Type	Clashes	Symm-Clashes
5	B	1546	P6G	3	0
3	A	1544	PGE	1	0

The following is a two-dimensional graphical depiction of Mogul quality analysis of bond lengths, bond angles, torsion angles, and ring geometry for all instances of the Ligand of Interest. In addition, ligands with molecular weight > 250 and outliers as shown on the validation Tables will also be included. For torsion angles, if less than 5% of the Mogul distribution of torsion angles is within 10 degrees of the torsion angle in question, then that torsion angle is considered an outlier. Any bond that is central to one or more torsion angles identified as an outlier by Mogul will be highlighted in the graph. For rings, the root-mean-square deviation (RMSD) between the ring in question and similar rings identified by Mogul is calculated over all ring torsion angles. If the average RMSD is greater than 60 degrees and the minimal RMSD between the ring in question and any Mogul-identified rings is also greater than 60 degrees, then that ring is considered an outlier. The outliers are highlighted in purple. The color gray indicates Mogul did not find sufficient equivalents in the CSD to analyse the geometry.



5.7 Other polymers [i](#)

There are no such residues in this entry.

5.8 Polymer linkage issues [i](#)

There are no chain breaks in this entry.

6 Fit of model and data

6.1 Protein, DNA and RNA chains

In the following table, the column labelled ‘#RSRZ > 2’ contains the number (and percentage) of RSRZ outliers, followed by percent RSRZ outliers for the chain as percentile scores relative to all X-ray entries and entries of similar resolution. The OWAB column contains the minimum, median, 95th percentile and maximum values of the occupancy-weighted average B-factor per residue. The column labelled ‘Q < 0.9’ lists the number of (and percentage) of residues with an average occupancy less than 0.9.

Mol	Chain	Analysed	<RSRZ>	#RSRZ>2	OWAB(Å ²)	Q<0.9
1	A	534/548 (97%)	-0.53	12 (2%) 62 56	21, 37, 56, 80	0
1	B	533/548 (97%)	-0.41	12 (2%) 60 54	27, 42, 62, 85	0
All	All	1067/1096 (97%)	-0.47	24 (2%) 62 56	21, 39, 60, 85	0

All (24) RSRZ outliers are listed below:

Mol	Chain	Res	Type	RSRZ
1	B	544	ALA	7.2
1	B	497	SER	5.6
1	B	543	THR	4.6
1	B	541	SER	4.4
1	A	493	ARG	4.4
1	A	494	ASP	4.1
1	B	542	ALA	3.7
1	A	495	SER	3.1
1	B	323	ASP	3.1
1	A	496	LYS	3.1
1	A	323	ASP	2.9
1	A	541	SER	2.9
1	A	322	GLN	2.9
1	B	268	GLU	2.8
1	A	497	SER	2.7
1	B	495	SER	2.5
1	A	422	GLY	2.4
1	A	109	ALA	2.3
1	A	540	LEU	2.2
1	B	322	GLN	2.2
1	A	216	LEU	2.2
1	B	109	ALA	2.2
1	B	492	PRO	2.2
1	B	496	LYS	2.1

6.2 Non-standard residues in protein, DNA, RNA chains [i](#)

In the following table, the Atoms column lists the number of modelled atoms in the group and the number defined in the chemical component dictionary. The B-factors column lists the minimum, median, 95th percentile and maximum values of B factors of atoms in the group. The column labelled 'Q< 0.9' lists the number of atoms with occupancy less than 0.9.

Mol	Type	Chain	Res	Atoms	RSCC	RSR	B-factors(Å ²)	Q<0.9
1	SBG	B	203	10/11	0.97	0.10	31,32,35,35	0
1	SBG	A	203	10/11	0.98	0.08	25,27,29,30	0

6.3 Carbohydrates [i](#)

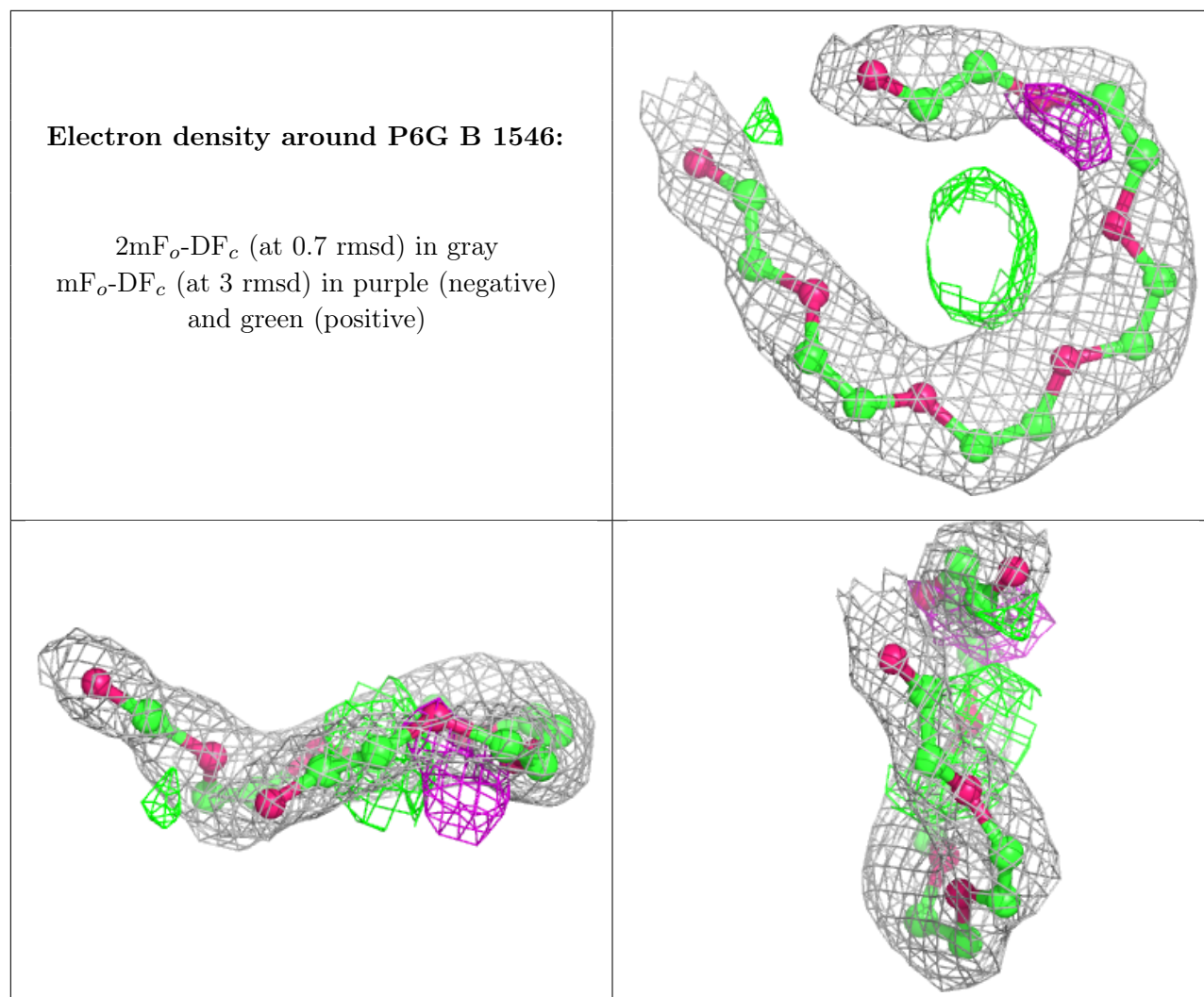
There are no monosaccharides in this entry.

6.4 Ligands [i](#)

In the following table, the Atoms column lists the number of modelled atoms in the group and the number defined in the chemical component dictionary. The B-factors column lists the minimum, median, 95th percentile and maximum values of B factors of atoms in the group. The column labelled 'Q< 0.9' lists the number of atoms with occupancy less than 0.9.

Mol	Type	Chain	Res	Atoms	RSCC	RSR	B-factors(Å ²)	Q<0.9
4	P4G	B	1545	11/11	0.59	0.25	87,89,90,91	0
2	NAG	A	1543	14/15	0.73	0.40	66,71,77,78	0
3	PGE	A	1544	9/10	0.83	0.25	71,74,77,78	0
5	P6G	B	1546	19/19	0.85	0.24	53,62,67,68	0
3	PGE	B	1544	9/10	0.87	0.31	81,84,85,86	0

The following is a graphical depiction of the model fit to experimental electron density of all instances of the Ligand of Interest. In addition, ligands with molecular weight > 250 and outliers as shown on the geometry validation Tables will also be included. Each fit is shown from different orientation to approximate a three-dimensional view.



6.5 Other polymers [i](#)

There are no such residues in this entry.