



Full wwPDB X-ray Structure Validation Report ⓘ

Nov 15, 2023 – 03:21 PM JST

PDB ID : 6JJ9
Title : Crystal structure of OsHXK6-Glc-ATP-Mg²⁺ complex
Authors : He, C.; Wei, P.; Chen, J.; Wang, H.; Wan, Y.; Zhou, J.; Zhu, Y.; Huang, W.; Yin, L.
Deposited on : 2019-02-25
Resolution : 3.00 Å(reported)

This is a Full wwPDB X-ray Structure Validation Report for a publicly released PDB entry.

We welcome your comments at validation@mail.wwpdb.org

A user guide is available at

<https://www.wwpdb.org/validation/2017/XrayValidationReportHelp>

with specific help available everywhere you see the ⓘ symbol.

The types of validation reports are described at

<http://www.wwpdb.org/validation/2017/FAQs#types>.

The following versions of software and data (see [references ⓘ](#)) were used in the production of this report:

MolProbity : 4.02b-467
Mogul : 1.8.5 (274361), CSD as541be (2020)
Xtriage (Phenix) : 1.13
EDS : 2.36
buster-report : 1.1.7 (2018)
Percentile statistics : 20191225.v01 (using entries in the PDB archive December 25th 2019)
Refmac : 5.8.0158
CCP4 : 7.0.044 (Gargrove)
Ideal geometry (proteins) : Engh & Huber (2001)
Ideal geometry (DNA, RNA) : Parkinson et al. (1996)
Validation Pipeline (wwPDB-VP) : 2.36

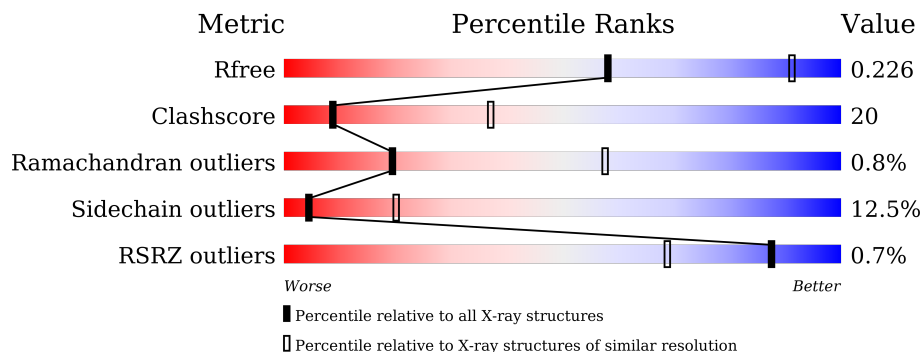
1 Overall quality at a glance

The following experimental techniques were used to determine the structure:

X-RAY DIFFRACTION

The reported resolution of this entry is 3.00 Å.

Percentile scores (ranging between 0-100) for global validation metrics of the entry are shown in the following graphic. The table shows the number of entries on which the scores are based.



Metric	Whole archive (#Entries)	Similar resolution (#Entries, resolution range(Å))
R_{free}	130704	2092 (3.00-3.00)
Clashscore	141614	2416 (3.00-3.00)
Ramachandran outliers	138981	2333 (3.00-3.00)
Sidechain outliers	138945	2336 (3.00-3.00)
RSRZ outliers	127900	1990 (3.00-3.00)

The table below summarises the geometric issues observed across the polymeric chains and their fit to the electron density. The red, orange, yellow and green segments of the lower bar indicate the fraction of residues that contain outliers for ≥ 3 , 2, 1 and 0 types of geometric quality criteria respectively. A grey segment represents the fraction of residues that are not modelled. The numeric value for each fraction is indicated below the corresponding segment, with a dot representing fractions $\leq 5\%$. The upper red bar (where present) indicates the fraction of residues that have poor fit to the electron density. The numeric value is given above the bar.

Mol	Chain	Length	Quality of chain
1	A	465	 % 68% 26% 6%
1	C	465	 % 65% 28% 7%
1	E	465	 % 65% 29% 5%

2 Entry composition [i](#)

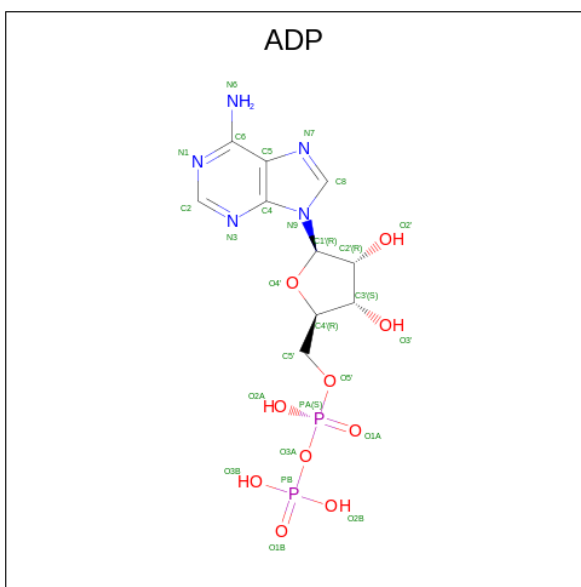
There are 5 unique types of molecules in this entry. The entry contains 10902 atoms, of which 0 are hydrogens and 0 are deuteriums.

In the tables below, the ZeroOcc column contains the number of atoms modelled with zero occupancy, the AltConf column contains the number of residues with at least one atom in alternate conformation and the Trace column contains the number of residues modelled with at most 2 atoms.

- Molecule 1 is a protein called Hexokinase-6.

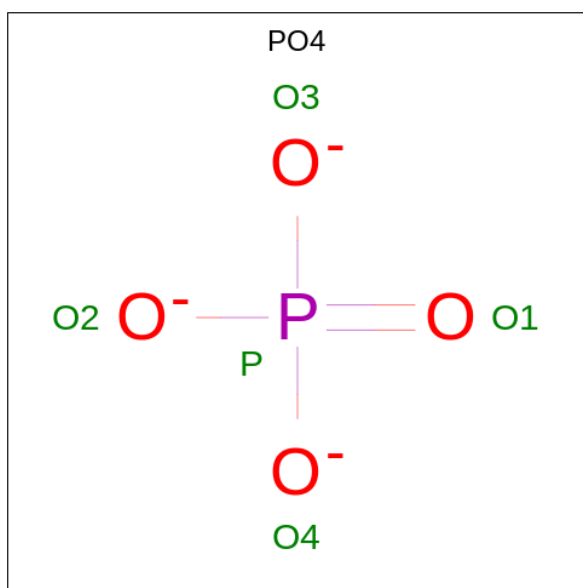
Mol	Chain	Residues	Atoms					ZeroOcc	AltConf	Trace
			Total	C	N	O	S			
1	C	465	Total 3589	C 2257	N 634	O 683	S 15	0	0	0
1	A	465	Total 3589	C 2257	N 634	O 683	S 15	0	0	0
1	E	465	Total 3589	C 2257	N 634	O 683	S 15	0	0	0

- Molecule 2 is ADENOSINE-5'-DIPHOSPHATE (three-letter code: ADP) (formula: $C_{10}H_{15}N_5O_{10}P_2$).



Mol	Chain	Residues	Atoms					ZeroOcc	AltConf
			Total	C	N	O	P		
2	C	1	Total 27	C 10	N 5	O 10	P 2	0	0
2	A	1	Total 27	C 10	N 5	O 10	P 2	0	0
2	E	1	Total 27	C 10	N 5	O 10	P 2	0	0

- Molecule 3 is PHOSPHATE ION (three-letter code: PO4) (formula: O₄P).

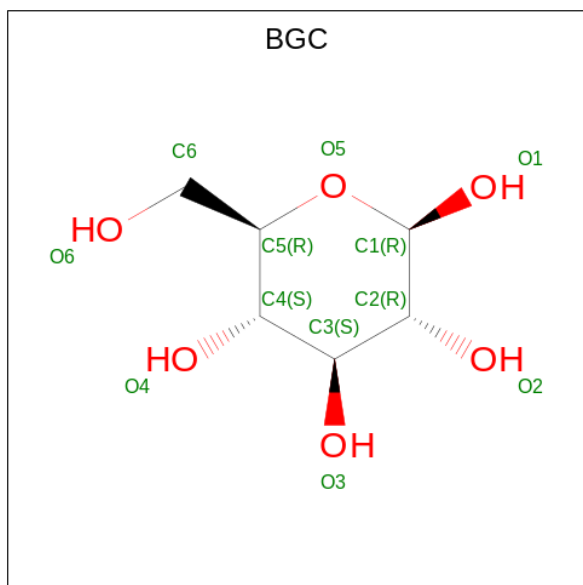


Mol	Chain	Residues	Atoms	ZeroOcc	AltConf
3	C	1	Total O P 5 4 1	0	0
3	A	1	Total O P 5 4 1	0	0
3	E	1	Total O P 5 4 1	0	0

- Molecule 4 is MAGNESIUM ION (three-letter code: MG) (formula: Mg).

Mol	Chain	Residues	Atoms	ZeroOcc	AltConf
4	C	1	Total Mg 1 1	0	0
4	A	1	Total Mg 1 1	0	0
4	E	1	Total Mg 1 1	0	0

- Molecule 5 is beta-D-glucopyranose (three-letter code: BGC) (formula: C₆H₁₂O₆).

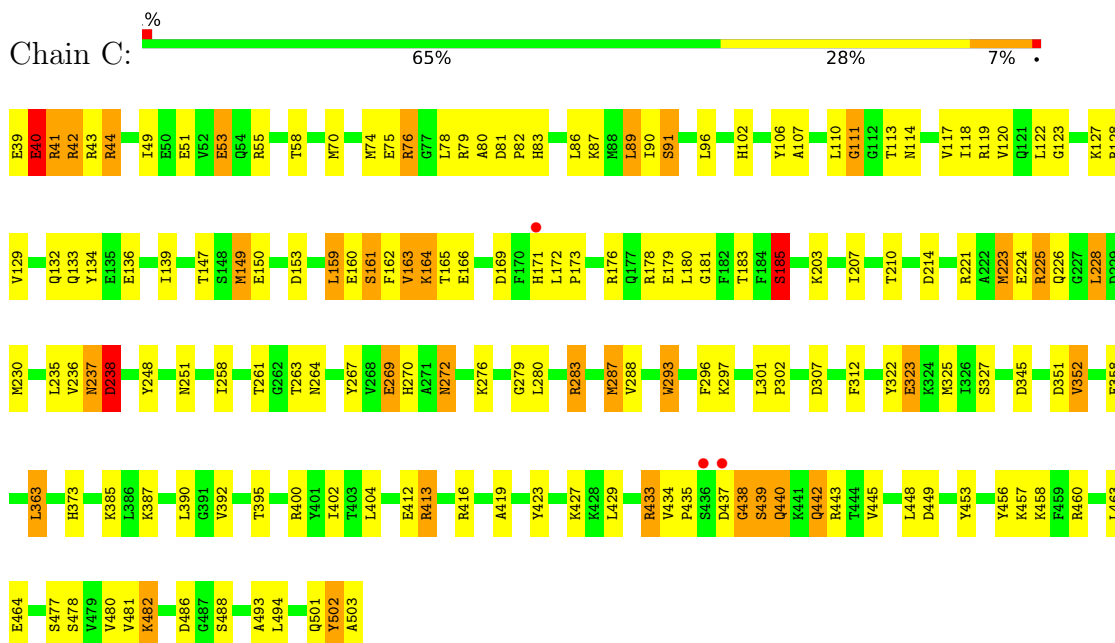


Mol	Chain	Residues	Atoms	ZeroOcc	AltConf
5	C	1	Total C O 12 6 6	0	0
5	A	1	Total C O 12 6 6	0	0
5	E	1	Total C O 12 6 6	0	0

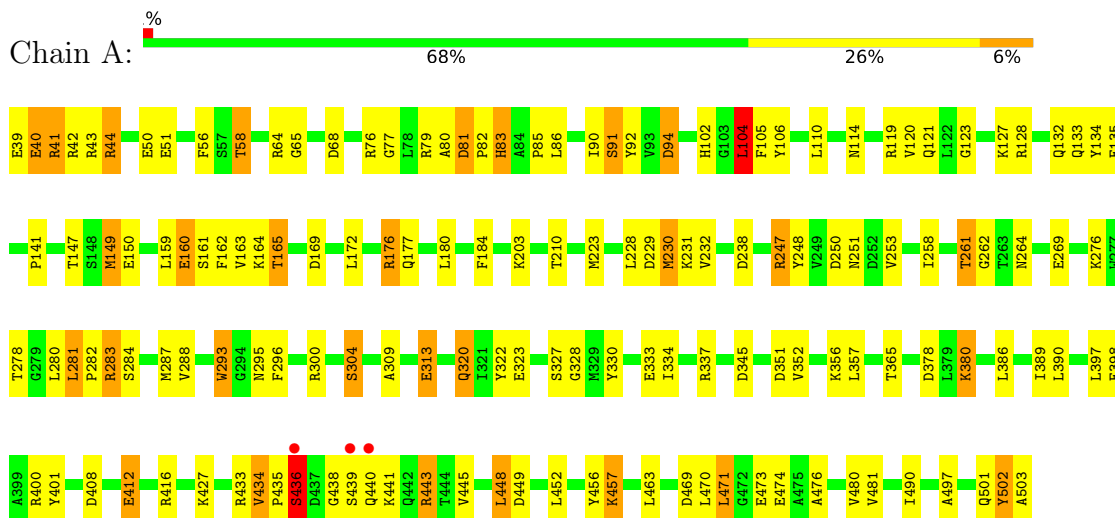
3 Residue-property plots

These plots are drawn for all protein, RNA, DNA and oligosaccharide chains in the entry. The first graphic for a chain summarises the proportions of the various outlier classes displayed in the second graphic. The second graphic shows the sequence view annotated by issues in geometry and electron density. Residues are color-coded according to the number of geometric quality criteria for which they contain at least one outlier: green = 0, yellow = 1, orange = 2 and red = 3 or more. A red dot above a residue indicates a poor fit to the electron density ($RSRZ > 2$). Stretches of 2 or more consecutive residues without any outlier are shown as a green connector. Residues present in the sample, but not in the model, are shown in grey.

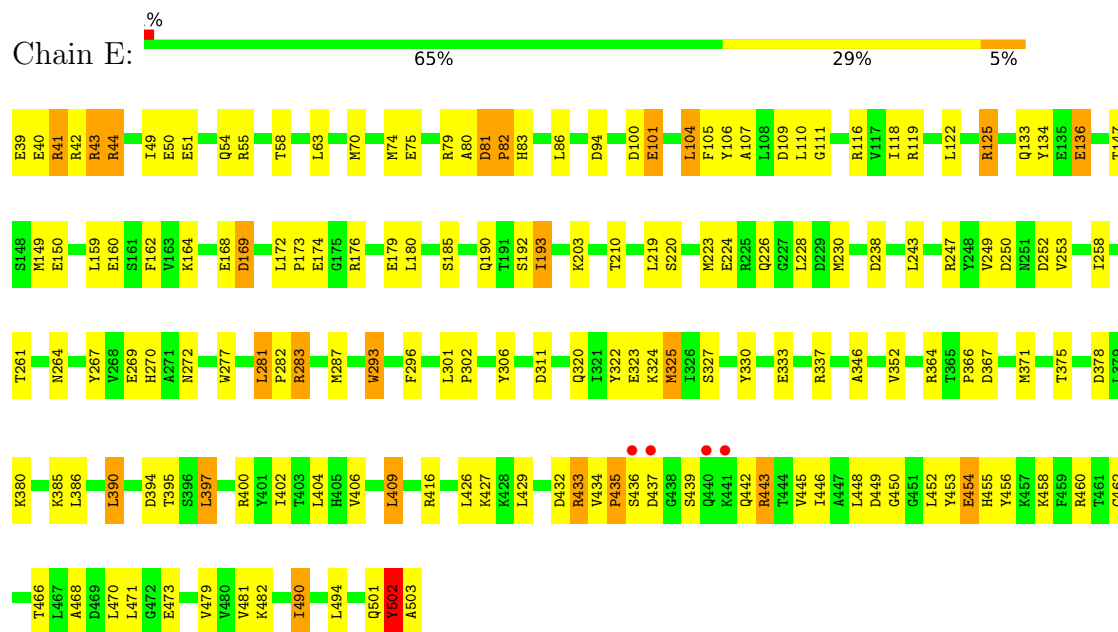
- Molecule 1: Hexokinase-6



- Molecule 1: Hexokinase-6



- Molecule 1: Hexokinase-6



4 Data and refinement statistics i

Property	Value	Source
Space group	P 32 2 1	Depositor
Cell constants a, b, c, α , β , γ	131.12Å 131.12Å 186.19Å 90.00° 90.00° 120.00°	Depositor
Resolution (Å)	43.07 – 3.00 48.47 – 3.00	Depositor EDS
% Data completeness (in resolution range)	100.0 (43.07-3.00) 99.2 (48.47-3.00)	Depositor EDS
R_{merge}	0.02	Depositor
R_{sym}	(Not available)	Depositor
$\langle I/\sigma(I) \rangle$ ¹	7.44 (at 3.01Å)	Xtrriage
Refinement program	PHENIX (1.10.1_2155: ???)	Depositor
R, R_{free}	0.206 , 0.242 0.203 , 0.226	Depositor DCC
R_{free} test set	1989 reflections (5.28%)	wwPDB-VP
Wilson B-factor (Å ²)	58.8	Xtrriage
Anisotropy	0.069	Xtrriage
Bulk solvent k_{sol} (e/Å ³), B_{sol} (Å ²)	0.34 , 28.8	EDS
L-test for twinning ²	$\langle L \rangle = 0.49$, $\langle L^2 \rangle = 0.32$	Xtrriage
Estimated twinning fraction	0.020 for -h,-k,l	Xtrriage
F_o, F_c correlation	0.93	EDS
Total number of atoms	10902	wwPDB-VP
Average B, all atoms (Å ²)	31.0	wwPDB-VP

Xtrriage's analysis on translational NCS is as follows: *The largest off-origin peak in the Patterson function is 2.38% of the height of the origin peak. No significant pseudotranslation is detected.*

¹Intensities estimated from amplitudes.

²Theoretical values of $\langle |L| \rangle$, $\langle L^2 \rangle$ for acentric reflections are 0.5, 0.333 respectively for untwinned datasets, and 0.375, 0.2 for perfectly twinned datasets.

5 Model quality i

5.1 Standard geometry i

Bond lengths and bond angles in the following residue types are not validated in this section: MG, BGC, ADP, PO4

The Z score for a bond length (or angle) is the number of standard deviations the observed value is removed from the expected value. A bond length (or angle) with $|Z| > 5$ is considered an outlier worth inspection. RMSZ is the root-mean-square of all Z scores of the bond lengths (or angles).

Mol	Chain	Bond lengths		Bond angles	
		RMSZ	# Z >5	RMSZ	# Z >5
1	A	1.04	1/3652 (0.0%)	0.81	7/4936 (0.1%)
1	C	1.17	4/3652 (0.1%)	0.86	7/4936 (0.1%)
1	E	0.90	3/3652 (0.1%)	0.76	7/4936 (0.1%)
All	All	1.04	8/10956 (0.1%)	0.81	21/14808 (0.1%)

All (8) bond length outliers are listed below:

Mol	Chain	Res	Type	Atoms	Z	Observed(Å)	Ideal(Å)
1	C	323	GLU	CD-OE2	-7.31	1.17	1.25
1	C	323	GLU	CD-OE1	-7.30	1.17	1.25
1	C	269	GLU	CD-OE1	-5.46	1.19	1.25
1	E	306	TYR	CE1-CZ	-5.39	1.31	1.38
1	A	269	GLU	CD-OE1	-5.35	1.19	1.25
1	E	267	TYR	CE1-CZ	-5.21	1.31	1.38
1	C	248	TYR	CE1-CZ	-5.14	1.31	1.38
1	E	323	GLU	CD-OE1	-5.12	1.20	1.25

All (21) bond angle outliers are listed below:

Mol	Chain	Res	Type	Atoms	Z	Observed(°)	Ideal(°)
1	A	278	THR	N-CA-C	-7.93	89.59	111.00
1	C	363	LEU	CA-CB-CG	7.11	131.65	115.30
1	A	463	LEU	CA-CB-CG	6.88	131.12	115.30
1	C	438	GLY	N-CA-C	-6.31	97.33	113.10
1	E	502	TYR	CB-CG-CD1	-6.21	117.28	121.00
1	C	181	GLY	N-CA-C	-6.16	97.70	113.10
1	E	502	TYR	CA-CB-CG	6.14	125.08	113.40
1	C	111	GLY	N-CA-C	-5.90	98.35	113.10
1	E	81	ASP	C-N-CD	5.84	140.67	128.40
1	E	502	TYR	CB-CG-CD2	5.69	124.41	121.00

Continued on next page...

Continued from previous page...

Mol	Chain	Res	Type	Atoms	Z	Observed(°)	Ideal(°)
1	A	81	ASP	C-N-CD	5.46	139.87	128.40
1	C	238	ASP	CB-CG-OD1	5.41	123.16	118.30
1	C	502	TYR	N-CA-C	5.39	125.56	111.00
1	A	434	VAL	C-N-CD	5.23	139.39	128.40
1	A	104	LEU	CA-CB-CG	5.16	127.17	115.30
1	A	471	LEU	CA-CB-CG	5.12	127.09	115.30
1	A	443	ARG	N-CA-C	-5.12	97.19	111.00
1	E	502	TYR	N-CA-CB	5.08	119.75	110.60
1	C	40	GLU	N-CA-C	-5.08	97.28	111.00
1	E	502	TYR	CB-CA-C	5.05	120.50	110.40
1	E	82	PRO	CA-N-CD	-5.04	104.44	111.50

There are no chirality outliers.

There are no planarity outliers.

5.2 Too-close contacts

In the following table, the Non-H and H(model) columns list the number of non-hydrogen atoms and hydrogen atoms in the chain respectively. The H(added) column lists the number of hydrogen atoms added and optimized by MolProbity. The Clashes column lists the number of clashes within the asymmetric unit, whereas Symm-Clashes lists symmetry-related clashes.

Mol	Chain	Non-H	H(model)	H(added)	Clashes	Symm-Clashes
1	A	3589	0	3582	133	2
1	C	3589	0	3581	169	3
1	E	3589	0	3575	144	0
2	A	27	0	12	3	0
2	C	27	0	12	0	0
2	E	27	0	12	3	0
3	A	5	0	0	0	0
3	C	5	0	0	0	0
3	E	5	0	0	0	0
4	A	1	0	0	0	0
4	C	1	0	0	0	0
4	E	1	0	0	0	0
5	A	12	0	11	4	0
5	C	12	0	11	5	0
5	E	12	0	11	2	0
All	All	10902	0	10807	444	3

The all-atom clashscore is defined as the number of clashes found per 1000 atoms (including

hydrogen atoms). The all-atom clashscore for this structure is 20.

All (444) close contacts within the same asymmetric unit are listed below, sorted by their clash magnitude.

Atom-1	Atom-2	Interatomic distance (Å)	Clash overlap (Å)
1:C:176:ARG:HG2	1:C:503:ALA:CB	1.39	1.51
1:E:435:PRO:HG2	1:E:436:SER:CB	1.55	1.36
1:C:166:GLU:OE1	1:C:178:ARG:NH1	1.57	1.33
1:A:160:GLU:OE2	1:A:164:LYS:HE3	1.27	1.33
1:A:176:ARG:CD	1:A:503:ALA:HA	1.56	1.32
1:A:176:ARG:HD3	1:A:503:ALA:CA	1.58	1.31
1:C:176:ARG:CG	1:C:503:ALA:HB1	1.62	1.29
1:E:436:SER:OG	1:E:437:ASP:OD2	1.53	1.25
1:E:119:ARG:NH1	1:E:133:GLN:OE1	1.71	1.22
1:A:119:ARG:NH1	1:A:133:GLN:OE1	1.82	1.13
1:E:435:PRO:HB2	1:E:436:SER:HA	1.20	1.12
1:E:367:ASP:OD1	1:E:385:LYS:NZ	1.83	1.12
1:E:435:PRO:CB	1:E:436:SER:HA	1.79	1.11
1:C:435:PRO:HG3	1:C:440:GLN:O	1.51	1.10
1:E:433:ARG:HB3	1:E:433:ARG:HH21	1.16	1.09
1:C:78:LEU:O	1:C:276:LYS:HG2	1.55	1.06
1:A:231:LYS:NZ	1:A:501:GLN:HE21	1.52	1.06
1:C:42:ARG:HB2	1:C:42:ARG:HH21	1.14	1.06
1:C:433:ARG:HH21	1:C:433:ARG:HB3	1.16	1.05
1:C:173:PRO:HB2	1:C:176:ARG:HD2	1.06	1.05
1:C:437:ASP:HB2	1:C:439:SER:CB	1.89	1.02
1:E:409:LEU:HD12	1:E:409:LEU:H	1.24	1.01
1:A:91:SER:OG	1:A:288:VAL:O	1.80	1.00
1:A:261:THR:O	1:A:327:SER:OG	1.78	1.00
1:E:435:PRO:HG2	1:E:436:SER:CA	1.92	0.99
1:C:119:ARG:NH1	1:C:133:GLN:OE1	1.96	0.98
1:E:435:PRO:HG2	1:E:436:SER:HB2	1.44	0.97
1:C:51:GLU:O	1:C:55:ARG:HG2	1.64	0.97
1:C:437:ASP:HB2	1:C:439:SER:HB2	1.46	0.97
1:E:435:PRO:HG2	1:E:436:SER:HB3	1.47	0.96
1:E:436:SER:HB2	1:E:437:ASP:HA	1.48	0.96
1:C:173:PRO:CB	1:C:176:ARG:HD2	1.96	0.95
1:A:231:LYS:HZ2	1:A:501:GLN:HE21	1.14	0.94
1:A:120:VAL:HG12	1:A:132:GLN:HG3	1.50	0.94
1:C:287:MET:HE2	1:C:287:MET:HA	1.49	0.93
1:C:173:PRO:HB2	1:C:176:ARG:CD	1.99	0.93
1:E:281:LEU:HD22	1:E:282:PRO:HD2	1.51	0.92
1:C:434:VAL:HG12	1:C:435:PRO:HD2	1.49	0.92

Continued on next page...

Continued from previous page...

Atom-1	Atom-2	Interatomic distance (Å)	Clash overlap (Å)
1:E:435:PRO:CG	1:E:436:SER:HA	2.01	0.91
1:C:280:LEU:H	1:C:280:LEU:HD23	1.33	0.91
1:C:42:ARG:HB2	1:C:42:ARG:NH2	1.86	0.91
1:C:283:ARG:H	1:C:283:ARG:HD3	1.33	0.90
1:E:283:ARG:H	1:E:283:ARG:HD3	1.32	0.90
1:A:231:LYS:NZ	1:A:501:GLN:NE2	2.21	0.88
1:E:436:SER:CB	1:E:437:ASP:HA	1.98	0.88
1:E:435:PRO:CG	1:E:436:SER:CB	2.49	0.88
1:E:406:VAL:HA	1:E:409:LEU:HD13	1.54	0.87
1:E:435:PRO:HB2	1:E:436:SER:CA	2.04	0.87
1:E:433:ARG:HH21	1:E:433:ARG:CB	1.88	0.87
1:E:179:GLU:OE2	1:E:501:GLN:HG3	1.75	0.86
1:A:160:GLU:OE2	1:A:164:LYS:CE	2.20	0.86
1:C:51:GLU:HG2	1:C:55:ARG:HD3	1.54	0.86
1:C:423:TYR:O	1:C:427:LYS:HG3	1.76	0.85
1:E:435:PRO:CB	1:E:436:SER:CA	2.54	0.85
1:C:434:VAL:CG1	1:C:435:PRO:HD2	2.05	0.85
1:E:435:PRO:CG	1:E:436:SER:CA	2.54	0.84
1:A:261:THR:CG2	2:A:601:ADP:O3B	2.26	0.83
1:E:281:LEU:HD22	1:E:282:PRO:CD	2.07	0.83
1:C:176:ARG:CG	1:C:503:ALA:CB	2.34	0.83
1:A:41:ARG:HG3	1:A:41:ARG:HH11	1.42	0.83
1:A:90:ILE:CG2	1:A:287:MET:CE	2.56	0.83
1:A:501:GLN:N	1:A:502:TYR:HA	1.91	0.83
1:A:44:ARG:HD3	1:A:345:ASP:O	1.79	0.82
1:A:501:GLN:H	1:A:502:TYR:HA	1.44	0.82
1:C:433:ARG:HH21	1:C:433:ARG:CB	1.92	0.82
1:C:433:ARG:HB3	1:C:433:ARG:NH2	1.94	0.82
1:E:320:GLN:O	1:E:324:LYS:HG3	1.79	0.82
1:C:114:ASN:HD22	1:C:136:GLU:CD	1.82	0.82
1:C:437:ASP:H	1:C:438:GLY:C	1.83	0.82
1:C:76:ARG:HG2	1:C:76:ARG:HH11	1.45	0.82
1:C:91:SER:OG	1:C:288:VAL:O	1.96	0.81
1:A:104:LEU:HB2	1:A:121:GLN:OE1	1.79	0.81
1:A:128:ARG:NH2	1:A:248:TYR:O	2.13	0.81
1:C:435:PRO:CG	1:C:440:GLN:O	2.28	0.81
1:C:437:ASP:HB2	1:C:439:SER:HB3	1.61	0.81
1:A:247:ARG:NH2	1:A:253:VAL:O	2.14	0.81
1:A:39:GLU:HG3	1:A:40:GLU:H	1.46	0.79
1:A:90:ILE:HG22	1:A:287:MET:HE3	1.65	0.79
1:C:179:GLU:OE2	1:C:501:GLN:HG3	1.81	0.79

Continued on next page...

Continued from previous page...

Atom-1	Atom-2	Interatomic distance (Å)	Clash overlap (Å)
1:C:180:LEU:HD22	1:C:223:MET:HE1	1.63	0.79
1:C:176:ARG:HG2	1:C:503:ALA:HB2	1.62	0.79
1:E:43:ARG:HG3	1:E:44:ARG:N	1.99	0.78
1:A:90:ILE:CG2	1:A:287:MET:HE3	2.14	0.78
1:A:58:THR:O	1:A:416:ARG:NH1	2.17	0.77
1:C:439:SER:OG	1:C:440:GLN:N	2.17	0.77
1:C:269:GLU:HG3	1:C:270:HIS:N	1.98	0.77
1:A:231:LYS:HZ2	1:A:501:GLN:NE2	1.81	0.77
1:A:448:LEU:HD13	1:A:481:VAL:HG13	1.66	0.77
1:C:448:LEU:HD13	1:C:481:VAL:HG13	1.67	0.76
1:C:437:ASP:CB	1:C:439:SER:HB2	2.15	0.76
1:C:437:ASP:N	1:C:438:GLY:O	2.17	0.75
1:E:261:THR:O	1:E:327:SER:OG	2.04	0.75
1:E:250:ASP:OD1	1:E:443:ARG:NH2	2.18	0.75
1:C:76:ARG:HG2	1:C:76:ARG:NH1	1.98	0.75
1:E:371:MET:CE	1:E:386:LEU:HG	2.16	0.75
1:E:471:LEU:HD11	1:E:479:VAL:HG21	1.67	0.74
1:A:231:LYS:HZ3	1:A:501:GLN:HE21	1.33	0.74
1:C:280:LEU:H	1:C:280:LEU:CD2	1.98	0.74
1:C:434:VAL:HG12	1:C:435:PRO:CD	2.17	0.74
1:A:39:GLU:HG3	1:A:40:GLU:N	2.01	0.74
1:A:434:VAL:HG21	1:A:474:GLU:OE2	1.87	0.74
1:C:287:MET:HA	1:C:287:MET:CE	2.16	0.74
1:C:261:THR:O	1:C:327:SER:OG	2.06	0.73
1:A:261:THR:HG23	2:A:601:ADP:O3B	1.87	0.73
1:C:110:LEU:O	1:C:185:SER:OG	2.05	0.73
1:E:409:LEU:H	1:E:409:LEU:CD1	2.01	0.73
1:C:283:ARG:H	1:C:283:ARG:CD	1.97	0.72
1:E:448:LEU:HD13	1:E:481:VAL:HG13	1.71	0.72
1:C:114:ASN:ND2	1:C:136:GLU:CD	2.43	0.72
1:A:250:ASP:OD1	1:A:443:ARG:NH2	2.23	0.71
1:E:79:ARG:O	1:E:80:ALA:HB3	1.90	0.71
1:E:409:LEU:HD12	1:E:409:LEU:N	2.03	0.71
1:C:437:ASP:H	1:C:438:GLY:CA	2.03	0.71
1:A:90:ILE:CG2	1:A:287:MET:HE2	2.20	0.71
1:E:100:ASP:OD2	1:E:125:ARG:HD3	1.90	0.71
1:A:41:ARG:HH11	1:A:41:ARG:CG	2.04	0.70
1:E:160:GLU:OE2	1:E:164:LYS:HE3	1.90	0.70
1:A:64:ARG:NH1	1:A:470:LEU:O	2.24	0.70
1:A:90:ILE:HG23	1:A:287:MET:CE	2.20	0.70
1:A:323:GLU:OE2	5:A:604:BGC:O1	2.10	0.70

Continued on next page...

Continued from previous page...

Atom-1	Atom-2	Interatomic distance (Å)	Clash overlap (Å)
1:C:58:THR:O	1:C:416:ARG:NH1	2.24	0.69
1:C:176:ARG:HG2	1:C:503:ALA:HB1	0.70	0.69
1:E:433:ARG:HB3	1:E:433:ARG:NH2	1.99	0.69
1:E:193:ILE:HG13	1:E:193:ILE:O	1.90	0.69
1:E:435:PRO:CG	1:E:436:SER:HB2	2.18	0.69
1:C:301:LEU:HD13	1:C:325:MET:HE3	1.74	0.69
1:A:90:ILE:HG23	1:A:287:MET:HE2	1.75	0.69
1:C:269:GLU:HG3	1:C:270:HIS:H	1.56	0.69
1:A:438:GLY:N	1:A:439:SER:HA	2.08	0.69
1:A:176:ARG:HD3	1:A:503:ALA:HA	0.74	0.68
1:C:501:GLN:N	1:C:502:TYR:HA	2.08	0.68
1:C:437:ASP:N	1:C:438:GLY:CA	2.56	0.67
1:A:68:ASP:OD2	1:A:427:LYS:NZ	2.27	0.67
1:E:436:SER:CB	1:E:437:ASP:CA	2.73	0.67
1:E:147:THR:HB	1:E:150:GLU:HG3	1.75	0.66
1:C:147:THR:HG22	1:C:149:MET:H	1.60	0.66
1:E:501:GLN:N	1:E:502:TYR:HA	2.11	0.66
1:C:238:ASP:OD1	5:C:604:BGC:O4	2.06	0.65
1:E:311:ASP:OD1	1:E:324:LYS:NZ	2.29	0.65
1:A:378:ASP:OD1	1:A:380:LYS:NZ	2.30	0.65
1:C:44:ARG:HG2	1:C:345:ASP:O	1.96	0.65
1:C:301:LEU:HD13	1:C:325:MET:CE	2.26	0.65
1:A:160:GLU:CD	1:A:164:LYS:HE3	2.14	0.64
1:C:120:VAL:HG12	1:C:132:GLN:HG3	1.79	0.64
1:E:203:LYS:NZ	5:E:604:BGC:O6	2.28	0.64
1:C:437:ASP:N	1:C:438:GLY:HA2	2.13	0.64
1:C:180:LEU:HD22	1:C:223:MET:CE	2.28	0.64
1:A:330:TYR:O	1:A:334:ILE:HG13	1.97	0.64
1:C:236:VAL:C	1:C:237:ASN:O	2.29	0.63
1:A:231:LYS:HZ3	1:A:501:GLN:NE2	1.93	0.63
1:A:77:GLY:O	1:A:276:LYS:HE2	1.98	0.63
1:E:453:TYR:CE1	1:E:460:ARG:HG3	2.34	0.62
1:C:49:ILE:O	1:C:53:GLU:CG	2.48	0.62
1:E:473:GLU:OE1	1:E:473:GLU:N	2.25	0.62
1:A:258:ILE:HD13	1:A:449:ASP:HB3	1.81	0.61
1:A:436:SER:O	1:A:439:SER:HB2	2.00	0.61
1:C:49:ILE:O	1:C:53:GLU:HG3	2.00	0.61
1:E:283:ARG:HD3	1:E:283:ARG:N	2.10	0.61
1:E:101:GLU:HG3	1:E:494:LEU:HD22	1.82	0.61
1:A:82:PRO:O	1:A:83:HIS:HB2	2.01	0.61
1:A:90:ILE:HG22	1:A:287:MET:CE	2.24	0.61

Continued on next page...

Continued from previous page...

Atom-1	Atom-2	Interatomic distance (Å)	Clash overlap (Å)
1:C:437:ASP:N	1:C:438:GLY:C	2.54	0.60
1:C:40:GLU:O	1:C:42:ARG:N	2.34	0.60
1:C:438:GLY:O	1:C:439:SER:HB3	2.01	0.60
1:C:76:ARG:HH11	1:C:76:ARG:CG	2.13	0.60
1:E:58:THR:O	1:E:416:ARG:NH1	2.34	0.60
1:A:238:ASP:OD2	5:A:604:BGC:H6C1	2.01	0.60
1:E:434:VAL:HG23	1:E:434:VAL:O	2.01	0.60
1:C:129:VAL:HG13	1:C:129:VAL:O	2.00	0.60
1:C:49:ILE:HD11	1:C:402:ILE:HG23	1.84	0.59
1:C:159:LEU:HD13	1:C:223:MET:HE2	1.84	0.59
1:C:373:HIS:NE2	1:C:458:LYS:HG3	2.18	0.59
1:E:106:TYR:HB2	1:E:230:MET:CE	2.32	0.59
1:A:92:TYR:H	1:A:287:MET:HE3	1.67	0.59
1:C:264:ASN:CB	5:C:604:BGC:H5	2.32	0.59
1:C:351:ASP:O	1:C:352:VAL:HG12	2.03	0.59
1:C:87:LYS:HB3	1:C:89:LEU:HD21	1.84	0.59
1:C:161:SER:O	1:C:165:THR:HG23	2.02	0.59
1:E:371:MET:HE1	1:E:386:LEU:HG	1.82	0.58
1:C:159:LEU:O	1:C:163:VAL:HG13	2.03	0.58
1:E:501:GLN:H	1:E:502:TYR:HA	1.68	0.58
1:C:147:THR:HB	1:C:150:GLU:HG3	1.84	0.58
1:C:264:ASN:HB2	5:C:604:BGC:H5	1.84	0.58
1:A:162:PHE:O	1:A:165:THR:CG2	2.52	0.58
1:C:228:LEU:HD22	1:C:230:MET:HG3	1.85	0.57
1:C:51:GLU:CG	1:C:55:ARG:HD3	2.30	0.57
1:C:113:THR:O	1:C:113:THR:HG22	2.05	0.57
1:A:147:THR:HB	1:A:150:GLU:HG3	1.86	0.57
1:C:412:GLU:O	1:C:416:ARG:HG3	2.04	0.57
1:E:180:LEU:HD22	1:E:223:MET:HE1	1.87	0.57
1:E:261:THR:OG1	2:E:601:ADP:O1B	2.12	0.57
1:E:502:TYR:O	1:E:503:ALA:HB3	2.05	0.57
1:E:406:VAL:CA	1:E:409:LEU:HD13	2.30	0.56
1:A:176:ARG:CD	1:A:503:ALA:CA	2.41	0.56
1:E:434:VAL:HA	1:E:435:PRO:O	2.06	0.56
1:A:282:PRO:O	1:A:283:ARG:C	2.39	0.56
1:E:471:LEU:CD1	1:E:479:VAL:HG21	2.36	0.56
1:A:94:ASP:OD1	1:A:94:ASP:N	2.37	0.56
1:A:333:GLU:O	1:A:337:ARG:HG3	2.05	0.56
1:E:106:TYR:HB2	1:E:230:MET:HE1	1.88	0.56
1:A:79:ARG:O	1:A:80:ALA:HB3	2.05	0.56
1:A:203:LYS:NZ	5:A:604:BGC:O6	2.38	0.56

Continued on next page...

Continued from previous page...

Atom-1	Atom-2	Interatomic distance (Å)	Clash overlap (Å)
1:C:123:GLY:N	1:C:128:ARG:O	2.22	0.56
1:C:280:LEU:HD23	1:C:280:LEU:N	2.11	0.56
1:A:147:THR:HG22	1:A:149:MET:H	1.70	0.56
1:A:352:VAL:O	1:A:352:VAL:HG23	2.03	0.56
1:C:176:ARG:NE	1:C:503:ALA:HB2	2.21	0.56
1:A:309:ALA:O	1:A:313:GLU:HG3	2.06	0.55
1:C:75:GLU:O	1:C:79:ARG:HG2	2.07	0.55
1:E:283:ARG:H	1:E:283:ARG:CD	2.13	0.55
1:C:258:ILE:HD13	1:C:449:ASP:HB3	1.89	0.55
1:A:119:ARG:NH2	1:A:162:PHE:O	2.39	0.55
1:A:380:LYS:NZ	1:A:380:LYS:HB3	2.22	0.55
1:E:433:ARG:HH21	1:E:433:ARG:CG	2.19	0.55
1:E:296:PHE:O	1:E:322:TYR:HB2	2.07	0.55
1:C:40:GLU:O	1:C:41:ARG:C	2.42	0.55
1:E:109:ASP:HB3	1:E:116:ARG:HG3	1.89	0.55
1:E:243:LEU:CD1	1:E:253:VAL:HG12	2.36	0.55
1:E:180:LEU:HD22	1:E:223:MET:CE	2.38	0.54
1:E:258:ILE:HD13	1:E:449:ASP:HB3	1.88	0.54
1:C:237:ASN:CG	1:C:238:ASP:H	2.09	0.54
1:E:119:ARG:NH2	1:E:162:PHE:O	2.41	0.54
1:C:51:GLU:O	1:C:55:ARG:CG	2.46	0.54
1:C:236:VAL:O	1:C:237:ASN:O	2.25	0.54
1:A:320:GLN:NE2	1:A:323:GLU:OE1	2.38	0.54
1:E:269:GLU:HG3	1:E:270:HIS:N	2.23	0.54
1:C:106:TYR:OH	1:C:166:GLU:HG3	2.08	0.54
1:E:104:LEU:HD22	1:E:105:PHE:N	2.23	0.54
1:E:40:GLU:O	1:E:42:ARG:N	2.40	0.54
1:E:490:ILE:HD12	1:E:494:LEU:HD11	1.90	0.54
1:C:442:GLN:O	1:C:478:SER:HB2	2.08	0.53
1:E:82:PRO:O	1:E:83:HIS:HB2	2.07	0.53
1:C:224:GLU:O	1:C:226:GLN:N	2.40	0.53
1:E:58:THR:HG22	1:E:302:PRO:HG3	1.91	0.53
1:C:118:ILE:HG22	1:C:119:ARG:N	2.23	0.53
1:E:40:GLU:O	1:E:41:ARG:C	2.45	0.53
1:A:119:ARG:HH22	1:A:165:THR:HG23	1.74	0.53
1:A:176:ARG:HD3	1:A:503:ALA:CB	2.33	0.53
1:E:169:ASP:OD1	1:E:169:ASP:N	2.39	0.53
1:A:247:ARG:O	1:A:247:ARG:HG3	2.07	0.53
1:A:397:LEU:O	1:A:401:TYR:HD1	1.92	0.53
1:C:224:GLU:C	1:C:226:GLN:H	2.12	0.52
1:E:224:GLU:C	1:E:226:GLN:H	2.13	0.52

Continued on next page...

Continued from previous page...

Atom-1	Atom-2	Interatomic distance (Å)	Clash overlap (Å)
1:E:432:ASP:OD1	1:E:432:ASP:N	2.31	0.52
1:A:160:GLU:HG3	1:A:161:SER:N	2.23	0.52
1:A:457:LYS:NZ	1:A:457:LYS:CB	2.72	0.52
1:E:101:GLU:HG3	1:E:494:LEU:CD2	2.40	0.52
1:C:453:TYR:CE1	1:C:460:ARG:HG3	2.45	0.52
1:A:56:PHE:HE1	1:A:304:SER:HG	1.57	0.52
1:C:434:VAL:HG13	1:C:435:PRO:HD2	1.91	0.51
1:A:39:GLU:CG	1:A:40:GLU:N	2.70	0.51
1:C:163:VAL:O	1:C:166:GLU:HB2	2.11	0.51
1:C:312:PHE:CE2	1:A:141:PRO:HD3	2.46	0.51
1:C:437:ASP:H	1:C:438:GLY:HA2	1.70	0.51
1:A:433:ARG:O	1:A:433:ARG:HG3	2.11	0.51
1:E:261:THR:OG1	2:E:601:ADP:O3'	2.23	0.51
1:C:55:ARG:HD2	1:C:55:ARG:N	2.24	0.51
1:C:134:TYR:CD1	1:C:134:TYR:C	2.85	0.51
1:A:281:LEU:O	1:A:282:PRO:C	2.47	0.51
1:E:468:ALA:O	1:E:471:LEU:O	2.29	0.50
1:A:162:PHE:O	1:A:165:THR:HG22	2.10	0.50
1:A:436:SER:C	1:A:439:SER:HA	2.32	0.50
1:E:220:SER:O	1:E:224:GLU:HG3	2.12	0.50
1:A:357:LEU:HB2	1:A:390:LEU:HD22	1.94	0.50
1:C:58:THR:OG1	1:C:416:ARG:HD3	2.12	0.50
1:E:106:TYR:CB	1:E:230:MET:HE1	2.42	0.50
1:C:102:HIS:HA	1:C:122:LEU:O	2.12	0.50
1:E:180:LEU:CD2	1:E:223:MET:HE3	2.42	0.50
1:C:127:LYS:O	1:C:128:ARG:HB2	2.12	0.50
1:A:438:GLY:N	1:A:439:SER:CA	2.73	0.50
1:E:101:GLU:HB2	1:E:122:LEU:HD13	1.94	0.50
1:A:134:TYR:C	1:A:134:TYR:CD1	2.85	0.49
1:E:134:TYR:CD1	1:E:134:TYR:C	2.86	0.49
1:A:120:VAL:HG11	1:A:490:ILE:HD13	1.93	0.49
1:E:252:ASP:CB	1:E:445:VAL:HG23	2.43	0.49
1:C:49:ILE:O	1:C:53:GLU:HG2	2.12	0.49
1:C:437:ASP:CA	1:C:438:GLY:C	2.80	0.49
1:E:49:ILE:HD11	1:E:402:ILE:HG23	1.94	0.49
1:C:79:ARG:O	1:C:80:ALA:HB3	2.11	0.49
1:A:378:ASP:O	1:A:400:ARG:NH2	2.45	0.49
1:A:471:LEU:HD13	1:A:476:ALA:HA	1.94	0.49
1:C:111:GLY:HA3	1:C:114:ASN:O	2.12	0.49
1:E:147:THR:HG22	1:E:149:MET:H	1.77	0.49
1:C:40:GLU:C	1:C:42:ARG:N	2.63	0.49

Continued on next page...

Continued from previous page...

Atom-1	Atom-2	Interatomic distance (Å)	Clash overlap (Å)
1:C:153:ASP:OD1	1:C:225:ARG:NH2	2.29	0.49
1:C:280:LEU:HG	1:C:280:LEU:O	2.13	0.49
1:C:390:LEU:HB2	1:C:392:VAL:HG22	1.94	0.49
1:C:287:MET:HE2	1:C:287:MET:CA	2.32	0.49
1:A:134:TYR:CD1	1:A:135:GLU:N	2.81	0.49
1:E:224:GLU:O	1:E:226:GLN:N	2.46	0.49
1:A:408:ASP:O	1:A:412:GLU:HB2	2.13	0.49
1:A:501:GLN:N	1:A:502:TYR:CA	2.72	0.49
1:E:107:ALA:HB3	1:E:118:ILE:HB	1.94	0.49
1:C:224:GLU:C	1:C:226:GLN:N	2.66	0.48
1:C:107:ALA:HB2	1:C:493:ALA:HB2	1.96	0.48
1:C:283:ARG:CD	1:C:283:ARG:N	2.72	0.48
1:C:173:PRO:HD2	1:C:176:ARG:HD3	1.96	0.48
1:E:41:ARG:HD2	1:E:346:ALA:O	2.13	0.48
1:C:87:LYS:HB3	1:C:89:LEU:CD2	2.44	0.48
1:C:147:THR:HG22	1:C:149:MET:N	2.28	0.48
1:E:224:GLU:C	1:E:226:GLN:N	2.67	0.48
1:C:443:ARG:NH2	1:C:445:VAL:HG21	2.27	0.48
1:E:462:CYS:O	1:E:466:THR:OG1	2.25	0.48
1:E:470:LEU:HA	1:E:470:LEU:HD23	1.74	0.48
1:E:454:GLU:OE1	1:E:455:HIS:CE1	2.66	0.48
1:E:450:GLY:O	1:E:454:GLU:HB2	2.13	0.48
1:C:114:ASN:ND2	1:C:136:GLU:OE1	2.47	0.47
1:C:122:LEU:CD1	1:C:494:LEU:HD23	2.44	0.47
1:A:162:PHE:O	1:A:165:THR:HG23	2.13	0.47
1:A:65:GLY:O	1:A:300:ARG:NH1	2.47	0.47
1:A:380:LYS:HB3	1:A:380:LYS:HZ2	1.78	0.47
1:E:364:ARG:HB3	1:E:366:PRO:HD2	1.96	0.47
1:A:134:TYR:HD1	1:A:135:GLU:N	2.12	0.47
1:A:165:THR:O	1:A:165:THR:OG1	2.27	0.47
1:A:176:ARG:CD	1:A:503:ALA:C	2.83	0.47
1:E:50:GLU:O	1:E:54:GLN:HG2	2.14	0.47
1:E:70:MET:O	1:E:74:MET:HG3	2.15	0.47
1:C:287:MET:CE	1:C:287:MET:CA	2.85	0.47
1:C:307:ASP:OD2	1:C:413:ARG:NH2	2.48	0.47
1:E:79:ARG:O	1:E:80:ALA:CB	2.59	0.47
1:A:106:TYR:CE1	1:A:163:VAL:HG12	2.50	0.47
1:E:473:GLU:H	1:E:473:GLU:CD	2.17	0.46
1:C:166:GLU:CD	1:C:178:ARG:NH1	2.54	0.46
1:A:434:VAL:CG2	1:A:474:GLU:OE2	2.59	0.46
1:E:116:ARG:HE	1:E:136:GLU:HG3	1.80	0.46

Continued on next page...

Continued from previous page...

Atom-1	Atom-2	Interatomic distance (Å)	Clash overlap (Å)
1:E:301:LEU:HD22	1:E:325:MET:HE1	1.98	0.46
1:A:110:LEU:HD23	1:A:184:PHE:CD1	2.51	0.46
1:C:482:LYS:HE2	1:C:482:LYS:HB3	1.61	0.46
1:E:433:ARG:NH2	1:E:433:ARG:CG	2.78	0.46
1:E:490:ILE:CD1	1:E:494:LEU:HG	2.46	0.46
1:C:267:TYR:HD1	1:C:429:LEU:HD21	1.80	0.46
1:C:269:GLU:CG	1:C:270:HIS:H	2.26	0.46
1:E:397:LEU:HD22	1:E:397:LEU:O	2.15	0.46
1:C:110:LEU:HD12	1:C:139:ILE:HD11	1.98	0.46
1:E:277:TRP:HA	1:E:277:TRP:CE3	2.51	0.46
1:C:43:ARG:C	1:C:43:ARG:CD	2.85	0.45
1:A:86:LEU:HD22	1:A:293:TRP:HA	1.97	0.45
1:A:180:LEU:HD23	1:A:232:VAL:HG22	1.98	0.45
1:C:39:GLU:HB2	1:C:41:ARG:HG2	1.98	0.45
1:E:147:THR:HG22	1:E:149:MET:N	2.32	0.45
1:A:105:PHE:CZ	1:A:497:ALA:HA	2.51	0.45
1:E:490:ILE:HD12	1:E:494:LEU:CD1	2.46	0.45
1:E:455:HIS:HB3	2:E:601:ADP:N6	2.31	0.45
1:A:120:VAL:CG1	1:A:132:GLN:HG3	2.33	0.45
1:A:445:VAL:HG22	1:A:480:VAL:HB	1.98	0.45
1:E:250:ASP:CG	1:E:443:ARG:HH21	2.20	0.45
1:A:110:LEU:HD23	1:A:184:PHE:CE1	2.51	0.45
1:C:58:THR:HG22	1:C:302:PRO:HG3	1.97	0.45
1:C:159:LEU:HD13	1:C:223:MET:CE	2.47	0.45
1:C:70:MET:O	1:C:74:MET:HG3	2.17	0.44
1:C:176:ARG:CB	1:C:503:ALA:HB1	2.39	0.44
1:C:264:ASN:HB3	5:C:604:BGC:H5	1.99	0.44
1:A:440:GLN:HA	1:A:440:GLN:OE1	2.17	0.44
1:C:43:ARG:HD2	1:C:44:ARG:N	2.32	0.44
1:C:296:PHE:O	1:C:322:TYR:HB2	2.17	0.44
1:C:263:THR:HG22	1:C:323:GLU:HG3	1.99	0.44
1:C:373:HIS:CD2	1:C:458:LYS:HG3	2.52	0.44
1:A:102:HIS:HD2	1:A:123:GLY:O	2.00	0.44
1:A:262:GLY:HA2	1:A:327:SER:HG	1.82	0.44
1:A:90:ILE:HG23	1:A:287:MET:HE3	1.90	0.44
1:E:264:ASN:HA	1:E:293:TRP:CD1	2.52	0.44
1:C:351:ASP:C	1:C:352:VAL:CG1	2.85	0.44
1:A:92:TYR:H	1:A:287:MET:CE	2.31	0.44
1:A:328:GLY:O	1:A:365:THR:OG1	2.32	0.44
1:C:373:HIS:NE2	1:C:457:LYS:HB3	2.33	0.43
1:E:180:LEU:CD2	1:E:223:MET:CE	2.96	0.43

Continued on next page...

Continued from previous page...

Atom-1	Atom-2	Interatomic distance (Å)	Clash overlap (Å)
1:C:160:GLU:OE2	1:C:164:LYS:HD2	2.18	0.43
1:C:237:ASN:CG	1:C:238:ASP:N	2.72	0.43
1:A:91:SER:O	1:A:92:TYR:HB2	2.18	0.43
1:A:264:ASN:ND2	5:A:604:BGC:O4	2.43	0.43
1:E:502:TYR:O	1:E:503:ALA:CB	2.66	0.43
1:E:110:LEU:O	1:E:185:SER:N	2.46	0.43
1:E:426:LEU:HD21	1:E:446:ILE:HD11	1.99	0.43
1:A:92:TYR:HA	1:A:287:MET:HE1	1.99	0.43
1:A:147:THR:HG22	1:A:149:MET:N	2.32	0.43
1:C:96:LEU:HD23	1:C:96:LEU:HA	1.87	0.43
1:E:283:ARG:N	1:E:283:ARG:CD	2.77	0.43
1:C:119:ARG:NH2	1:C:162:PHE:O	2.52	0.43
1:C:434:VAL:CG1	1:C:435:PRO:CD	2.85	0.43
1:A:76:ARG:HH21	1:A:85:PRO:HD3	1.83	0.43
1:A:397:LEU:HD11	1:A:401:TYR:HE1	1.83	0.43
1:E:250:ASP:CG	1:E:443:ARG:NH2	2.72	0.43
1:A:436:SER:O	1:A:439:SER:HA	2.19	0.43
1:A:176:ARG:HH11	1:A:176:ARG:CG	2.31	0.42
1:C:445:VAL:HG22	1:C:480:VAL:HB	2.02	0.42
1:E:252:ASP:HB3	1:E:445:VAL:HG23	2.00	0.42
1:C:267:TYR:CD1	1:C:429:LEU:HD21	2.53	0.42
1:A:127:LYS:HD3	1:A:127:LYS:HA	1.73	0.42
1:A:247:ARG:HA	1:A:250:ASP:O	2.19	0.42
1:A:261:THR:HG23	2:A:601:ADP:PB	2.60	0.42
1:C:223:MET:HG2	1:C:228:LEU:HD13	2.01	0.42
1:A:295:ASN:HA	1:A:320:GLN:HA	2.01	0.42
1:A:356:LYS:HD3	1:A:389:ILE:O	2.19	0.42
1:E:324:LYS:HA	1:E:330:TYR:CD1	2.53	0.42
1:E:174:GLU:H	1:E:174:GLU:HG3	1.58	0.42
1:E:86:LEU:HD21	1:E:296:PHE:HB2	2.02	0.42
1:A:457:LYS:NZ	1:A:457:LYS:HB2	2.34	0.42
1:E:94:ASP:N	1:E:94:ASP:OD1	2.46	0.42
1:C:51:GLU:O	1:C:51:GLU:HG2	2.19	0.42
1:C:207:ILE:HD13	1:C:207:ILE:HG21	1.85	0.42
1:C:264:ASN:HA	1:C:293:TRP:CD1	2.55	0.42
1:C:283:ARG:HD3	1:C:283:ARG:N	2.17	0.42
1:A:40:GLU:O	1:A:43:ARG:HG3	2.20	0.42
1:A:180:LEU:HD22	1:A:223:MET:CE	2.50	0.42
1:E:247:ARG:HA	1:E:250:ASP:O	2.20	0.42
1:C:358:GLU:OE2	1:A:356:LYS:HE3	2.20	0.41
1:E:110:LEU:HA	1:E:111:GLY:HA3	1.70	0.41

Continued on next page...

Continued from previous page...

Atom-1	Atom-2	Interatomic distance (Å)	Clash overlap (Å)
1:A:457:LYS:HB2	1:A:457:LYS:HZ2	1.85	0.41
1:E:238:ASP:OD2	5:E:604:BGC:H6C1	2.20	0.41
1:E:434:VAL:CA	1:E:435:PRO:O	2.68	0.41
1:C:106:TYR:CD1	1:C:119:ARG:HB2	2.56	0.41
1:E:40:GLU:C	1:E:42:ARG:N	2.74	0.41
1:E:253:VAL:HA	1:E:445:VAL:HB	2.01	0.41
1:E:378:ASP:O	1:E:400:ARG:NH2	2.47	0.41
1:E:445:VAL:HG12	1:E:446:ILE:N	2.35	0.41
1:C:90:ILE:H	1:C:90:ILE:HG12	1.65	0.41
1:C:183:THR:HG21	1:C:488:SER:HB2	2.02	0.41
1:E:352:VAL:O	1:E:352:VAL:HG23	2.19	0.41
1:C:301:LEU:HD13	1:C:325:MET:HE1	2.01	0.41
1:A:163:VAL:HG11	1:A:230:MET:HE3	2.03	0.41
1:E:43:ARG:HG3	1:E:44:ARG:H	1.83	0.41
1:E:104:LEU:HD22	1:E:104:LEU:C	2.41	0.41
1:E:173:PRO:HB2	1:E:176:ARG:HG3	2.03	0.41
1:C:82:PRO:O	1:C:83:HIS:HB2	2.20	0.41
1:C:160:GLU:OE2	1:C:164:LYS:HE2	2.21	0.41
1:A:282:PRO:O	1:A:284:SER:N	2.53	0.41
1:A:386:LEU:O	1:A:390:LEU:HB2	2.19	0.41
1:E:190:GLN:HG3	1:E:192:SER:O	2.21	0.41
1:E:333:GLU:O	1:E:337:ARG:HG3	2.21	0.41
1:C:118:ILE:CG2	1:C:119:ARG:N	2.83	0.40
1:A:296:PHE:O	1:A:322:TYR:HB2	2.20	0.40
1:A:436:SER:O	1:A:439:SER:CB	2.67	0.40
1:C:236:VAL:HG23	1:C:237:ASN:O	2.21	0.40
1:C:185:SER:O	5:C:604:BGC:O3	2.40	0.40
1:E:58:THR:HB	1:E:63:LEU:HD21	2.03	0.40
1:E:386:LEU:HD22	1:E:390:LEU:HD11	2.02	0.40
1:E:247:ARG:NH2	1:E:253:VAL:O	2.53	0.40
1:E:293:TRP:CD1	1:E:293:TRP:C	2.95	0.40
1:E:473:GLU:N	1:E:473:GLU:CD	2.72	0.40
1:C:122:LEU:HD11	1:C:494:LEU:HD23	2.02	0.40
1:C:419:ALA:HB2	1:C:463:LEU:HD22	2.03	0.40
1:A:176:ARG:CG	1:A:176:ARG:NH1	2.84	0.40
1:A:337:ARG:HH11	1:A:337:ARG:HD3	1.72	0.40
1:E:243:LEU:HD12	1:E:253:VAL:HG12	2.03	0.40

All (3) symmetry-related close contacts are listed below. The label for Atom-2 includes the symmetry operator and encoded unit-cell translations to be applied.

Atom-1	Atom-2	Interatomic distance (Å)	Clash overlap (Å)
1:C:464:GLU:OE1	1:A:283:ARG:NH1[5_685]	1.46	0.74
1:C:477:SER:O	1:A:281:LEU:CD1[5_685]	1.59	0.61
1:C:272:ASN:ND2	1:C:272:ASN:ND2[4_555]	1.87	0.33

5.3 Torsion angles [i](#)

5.3.1 Protein backbone [i](#)

In the following table, the Percentiles column shows the percent Ramachandran outliers of the chain as a percentile score with respect to all X-ray entries followed by that with respect to entries of similar resolution.

The Analysed column shows the number of residues for which the backbone conformation was analysed, and the total number of residues.

Mol	Chain	Analysed	Favoured	Allowed	Outliers	Percentiles
1	A	463/465 (100%)	444 (96%)	17 (4%)	2 (0%)	34 72
1	C	463/465 (100%)	438 (95%)	18 (4%)	7 (2%)	10 42
1	E	463/465 (100%)	438 (95%)	23 (5%)	2 (0%)	34 72
All	All	1389/1395 (100%)	1320 (95%)	58 (4%)	11 (1%)	19 57

All (11) Ramachandran outliers are listed below:

Mol	Chain	Res	Type
1	C	439	SER
1	E	435	PRO
1	A	435	PRO
1	E	41	ARG
1	C	225	ARG
1	C	237	ASN
1	C	486	ASP
1	C	41	ARG
1	C	185	SER
1	A	436	SER
1	C	279	GLY

5.3.2 Protein sidechains [i](#)

In the following table, the Percentiles column shows the percent sidechain outliers of the chain as a percentile score with respect to all X-ray entries followed by that with respect to entries of similar resolution.

The Analysed column shows the number of residues for which the sidechain conformation was analysed, and the total number of residues.

Mol	Chain	Analysed	Rotameric	Outliers	Percentiles	
1	A	377/377 (100%)	329 (87%)	48 (13%)	4	19
1	C	377/377 (100%)	331 (88%)	46 (12%)	5	21
1	E	377/377 (100%)	330 (88%)	47 (12%)	4	20
All	All	1131/1131 (100%)	990 (88%)	141 (12%)	4	20

All (141) residues with a non-rotameric sidechain are listed below:

Mol	Chain	Res	Type
1	C	40	GLU
1	C	42	ARG
1	C	44	ARG
1	C	53	GLU
1	C	76	ARG
1	C	81	ASP
1	C	86	LEU
1	C	89	LEU
1	C	91	SER
1	C	117	VAL
1	C	149	MET
1	C	159	LEU
1	C	161	SER
1	C	163	VAL
1	C	164	LYS
1	C	169	ASP
1	C	171	HIS
1	C	172	LEU
1	C	185	SER
1	C	203	LYS
1	C	210	THR
1	C	214	ASP
1	C	221	ARG
1	C	223	MET
1	C	228	LEU
1	C	235	LEU
1	C	238	ASP
1	C	251	ASN
1	C	272	ASN
1	C	283	ARG
1	C	287	MET

Continued on next page...

Continued from previous page...

Mol	Chain	Res	Type
1	C	293	TRP
1	C	297	LYS
1	C	352	VAL
1	C	363	LEU
1	C	385	LYS
1	C	387	LYS
1	C	395	THR
1	C	400	ARG
1	C	404	LEU
1	C	413	ARG
1	C	433	ARG
1	C	440	GLN
1	C	442	GLN
1	C	456	TYR
1	C	482	LYS
1	A	40	GLU
1	A	41	ARG
1	A	42	ARG
1	A	44	ARG
1	A	50	GLU
1	A	51	GLU
1	A	58	THR
1	A	81	ASP
1	A	83	HIS
1	A	91	SER
1	A	94	ASP
1	A	104	LEU
1	A	114	ASN
1	A	149	MET
1	A	159	LEU
1	A	160	GLU
1	A	165	THR
1	A	169	ASP
1	A	172	LEU
1	A	176	ARG
1	A	177	GLN
1	A	210	THR
1	A	228	LEU
1	A	229	ASP
1	A	230	MET
1	A	247	ARG
1	A	251	ASN

Continued on next page...

Continued from previous page...

Mol	Chain	Res	Type
1	A	261	THR
1	A	280	LEU
1	A	281	LEU
1	A	283	ARG
1	A	293	TRP
1	A	304	SER
1	A	313	GLU
1	A	320	GLN
1	A	351	ASP
1	A	380	LYS
1	A	398	GLU
1	A	412	GLU
1	A	436	SER
1	A	441	LYS
1	A	448	LEU
1	A	452	LEU
1	A	456	TYR
1	A	457	LYS
1	A	469	ASP
1	A	473	GLU
1	A	502	TYR
1	E	39	GLU
1	E	43	ARG
1	E	44	ARG
1	E	51	GLU
1	E	55	ARG
1	E	75	GLU
1	E	81	ASP
1	E	101	GLU
1	E	104	LEU
1	E	125	ARG
1	E	136	GLU
1	E	159	LEU
1	E	168	GLU
1	E	169	ASP
1	E	172	LEU
1	E	193	ILE
1	E	210	THR
1	E	219	LEU
1	E	228	LEU
1	E	249	VAL
1	E	272	ASN

Continued on next page...

Continued from previous page...

Mol	Chain	Res	Type
1	E	281	LEU
1	E	283	ARG
1	E	287	MET
1	E	293	TRP
1	E	325	MET
1	E	375	THR
1	E	380	LYS
1	E	390	LEU
1	E	394	ASP
1	E	395	THR
1	E	397	LEU
1	E	404	LEU
1	E	409	LEU
1	E	427	LYS
1	E	429	LEU
1	E	433	ARG
1	E	439	SER
1	E	442	GLN
1	E	443	ARG
1	E	452	LEU
1	E	454	GLU
1	E	456	TYR
1	E	458	LYS
1	E	482	LYS
1	E	490	ILE
1	E	502	TYR

Sometimes sidechains can be flipped to improve hydrogen bonding and reduce clashes. All (8) such sidechains are listed below:

Mol	Chain	Res	Type
1	C	114	ASN
1	A	102	HIS
1	A	114	ASN
1	A	177	GLN
1	A	226	GLN
1	A	501	GLN
1	E	83	HIS
1	E	455	HIS

5.3.3 RNA [i](#)

There are no RNA molecules in this entry.

5.4 Non-standard residues in protein, DNA, RNA chains [i](#)

There are no non-standard protein/DNA/RNA residues in this entry.

5.5 Carbohydrates [i](#)

There are no monosaccharides in this entry.

5.6 Ligand geometry [i](#)

Of 12 ligands modelled in this entry, 3 are monoatomic - leaving 9 for Mogul analysis.

In the following table, the Counts columns list the number of bonds (or angles) for which Mogul statistics could be retrieved, the number of bonds (or angles) that are observed in the model and the number of bonds (or angles) that are defined in the Chemical Component Dictionary. The Link column lists molecule types, if any, to which the group is linked. The Z score for a bond length (or angle) is the number of standard deviations the observed value is removed from the expected value. A bond length (or angle) with $|Z| > 2$ is considered an outlier worth inspection. RMSZ is the root-mean-square of all Z scores of the bond lengths (or angles).

Mol	Type	Chain	Res	Link	Bond lengths			Bond angles		
					Counts	RMSZ	# Z > 2	Counts	RMSZ	# Z > 2
2	ADP	C	601	4	24,29,29	1.95	10 (41%)	29,45,45	1.39	5 (17%)
5	BGC	C	604	-	12,12,12	1.21	1 (8%)	17,17,17	0.84	0
3	PO4	C	602	-	4,4,4	0.92	0	6,6,6	0.43	0
2	ADP	A	601	4	24,29,29	2.02	10 (41%)	29,45,45	1.81	6 (20%)
3	PO4	A	602	-	4,4,4	0.91	0	6,6,6	0.43	0
5	BGC	A	604	-	12,12,12	1.41	1 (8%)	17,17,17	2.35	8 (47%)
3	PO4	E	602	-	4,4,4	0.91	0	6,6,6	0.43	0
2	ADP	E	601	4	24,29,29	0.96	1 (4%)	29,45,45	1.51	4 (13%)
5	BGC	E	604	-	12,12,12	1.16	1 (8%)	17,17,17	0.88	0

In the following table, the Chirals column lists the number of chiral outliers, the number of chiral centers analysed, the number of these observed in the model and the number defined in the Chemical Component Dictionary. Similar counts are reported in the Torsion and Rings columns. '2' means no outliers of that kind were identified.

Mol	Type	Chain	Res	Link	Chirals	Torsions	Rings
2	ADP	C	601	4	-	3/12/32/32	0/3/3/3
5	BGC	C	604	-	-	2/2/22/22	0/1/1/1
2	ADP	A	601	4	-	4/12/32/32	0/3/3/3
5	BGC	A	604	-	-	2/2/22/22	0/1/1/1
2	ADP	E	601	4	-	1/12/32/32	0/3/3/3
5	BGC	E	604	-	-	2/2/22/22	0/1/1/1

All (24) bond length outliers are listed below:

Mol	Chain	Res	Type	Atoms	Z	Observed(Å)	Ideal(Å)
2	A	601	ADP	C2'-C1'	-4.21	1.47	1.53
2	A	601	ADP	PB-O3B	-3.21	1.42	1.54
5	C	604	BGC	O5-C1	3.13	1.50	1.42
2	C	601	ADP	C2'-C1'	-3.12	1.49	1.53
2	C	601	ADP	O4'-C4'	-3.08	1.38	1.45
2	C	601	ADP	PB-O2B	-2.99	1.43	1.54
2	A	601	ADP	PB-O2B	-2.97	1.43	1.54
5	E	604	BGC	O5-C1	2.91	1.50	1.42
5	A	604	BGC	O1-C1	-2.82	1.30	1.39
2	C	601	ADP	C4-N3	-2.78	1.31	1.35
2	C	601	ADP	PB-O3B	-2.71	1.44	1.54
2	C	601	ADP	C5-N7	-2.58	1.30	1.39
2	C	601	ADP	PA-O2A	-2.58	1.43	1.55
2	A	601	ADP	PA-O2A	-2.54	1.43	1.55
2	E	601	ADP	C5-C4	2.50	1.47	1.40
2	A	601	ADP	O4'-C4'	-2.49	1.39	1.45
2	A	601	ADP	C3'-C4'	-2.30	1.47	1.53
2	C	601	ADP	C2-N1	-2.23	1.29	1.33
2	C	601	ADP	C3'-C4'	-2.17	1.47	1.53
2	A	601	ADP	C2'-C3'	-2.12	1.47	1.53
2	A	601	ADP	C5-N7	-2.11	1.32	1.39
2	C	601	ADP	PA-O1A	-2.05	1.43	1.50
2	A	601	ADP	C8-N7	-2.01	1.31	1.34
2	A	601	ADP	O3'-C3'	-2.01	1.38	1.43

All (23) bond angle outliers are listed below:

Mol	Chain	Res	Type	Atoms	Z	Observed(°)	Ideal(°)
5	A	604	BGC	O5-C1-C2	-5.69	100.13	110.28
2	A	601	ADP	C3'-C2'-C1'	5.07	108.61	100.98
2	A	601	ADP	O3'-C3'-C2'	-4.32	97.86	111.82
5	A	604	BGC	C1-C2-C3	-3.69	102.66	110.31

Continued on next page...

Continued from previous page...

Mol	Chain	Res	Type	Atoms	Z	Observed(°)	Ideal(°)
2	E	601	ADP	PA-O3A-PB	-3.59	120.51	132.83
2	E	601	ADP	C3'-C2'-C1'	3.53	106.30	100.98
2	C	601	ADP	N3-C2-N1	-3.43	123.32	128.68
2	E	601	ADP	N3-C2-N1	-3.19	123.70	128.68
2	A	601	ADP	N3-C2-N1	-3.12	123.81	128.68
2	A	601	ADP	O2'-C2'-C3'	-3.11	101.78	111.82
5	A	604	BGC	C4-C3-C2	3.09	116.22	110.82
5	A	604	BGC	O4-C4-C3	-2.76	103.96	110.35
2	E	601	ADP	C4-C5-N7	-2.66	106.63	109.40
2	C	601	ADP	N6-C6-N1	2.63	124.04	118.57
2	A	601	ADP	C4-C5-N7	-2.58	106.72	109.40
2	C	601	ADP	O3B-PB-O2B	2.51	117.22	107.64
5	A	604	BGC	O2-C2-C1	2.44	114.82	109.16
5	A	604	BGC	O2-C2-C3	2.42	115.95	110.35
2	C	601	ADP	C5-C6-N6	-2.36	116.76	120.35
5	A	604	BGC	C1-O5-C5	-2.20	109.50	113.66
2	C	601	ADP	C3'-C2'-C1'	2.16	104.23	100.98
5	A	604	BGC	O3-C3-C4	-2.14	105.41	110.35
2	A	601	ADP	O4'-C1'-C2'	-2.07	103.90	106.93

There are no chirality outliers.

All (14) torsion outliers are listed below:

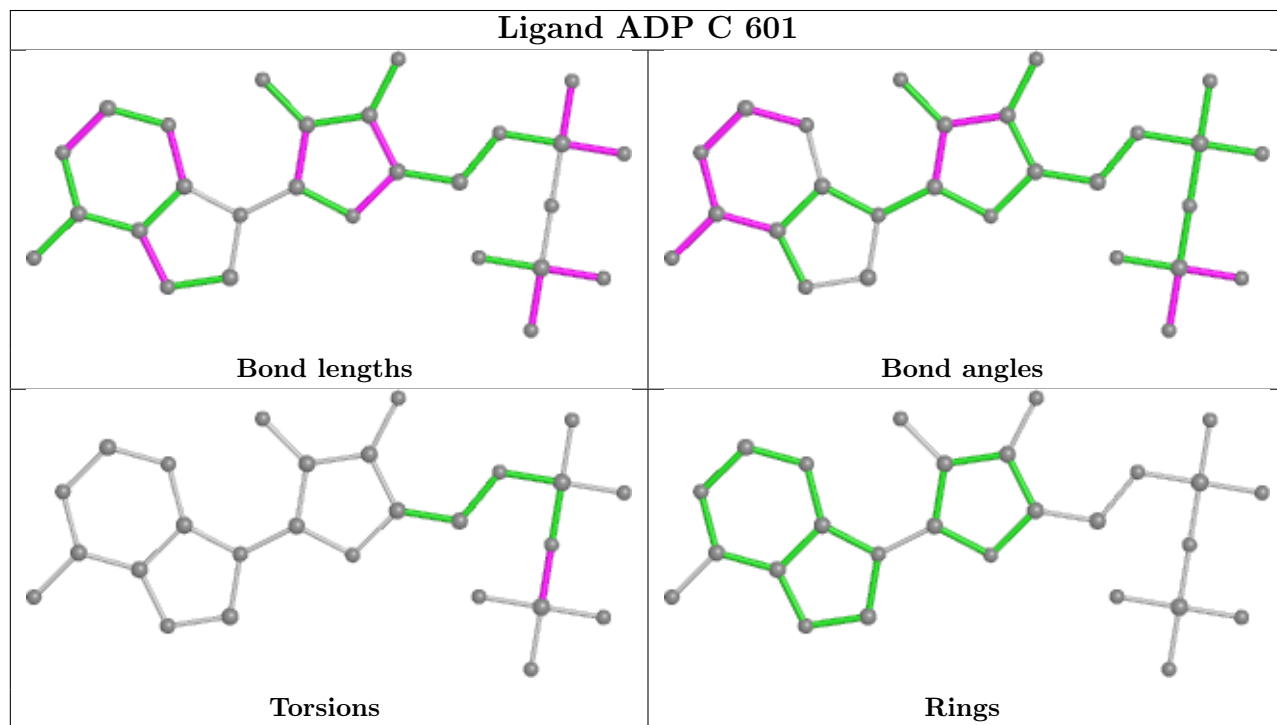
Mol	Chain	Res	Type	Atoms
2	A	601	ADP	C5'-O5'-PA-O1A
5	A	604	BGC	O5-C5-C6-O6
5	E	604	BGC	O5-C5-C6-O6
5	A	604	BGC	C4-C5-C6-O6
5	E	604	BGC	C4-C5-C6-O6
2	C	601	ADP	PA-O3A-PB-O1B
5	C	604	BGC	C4-C5-C6-O6
2	A	601	ADP	C5'-O5'-PA-O3A
2	E	601	ADP	C3'-C4'-C5'-O5'
5	C	604	BGC	O5-C5-C6-O6
2	A	601	ADP	PB-O3A-PA-O2A
2	C	601	ADP	PA-O3A-PB-O2B
2	C	601	ADP	PA-O3A-PB-O3B
2	A	601	ADP	PA-O3A-PB-O3B

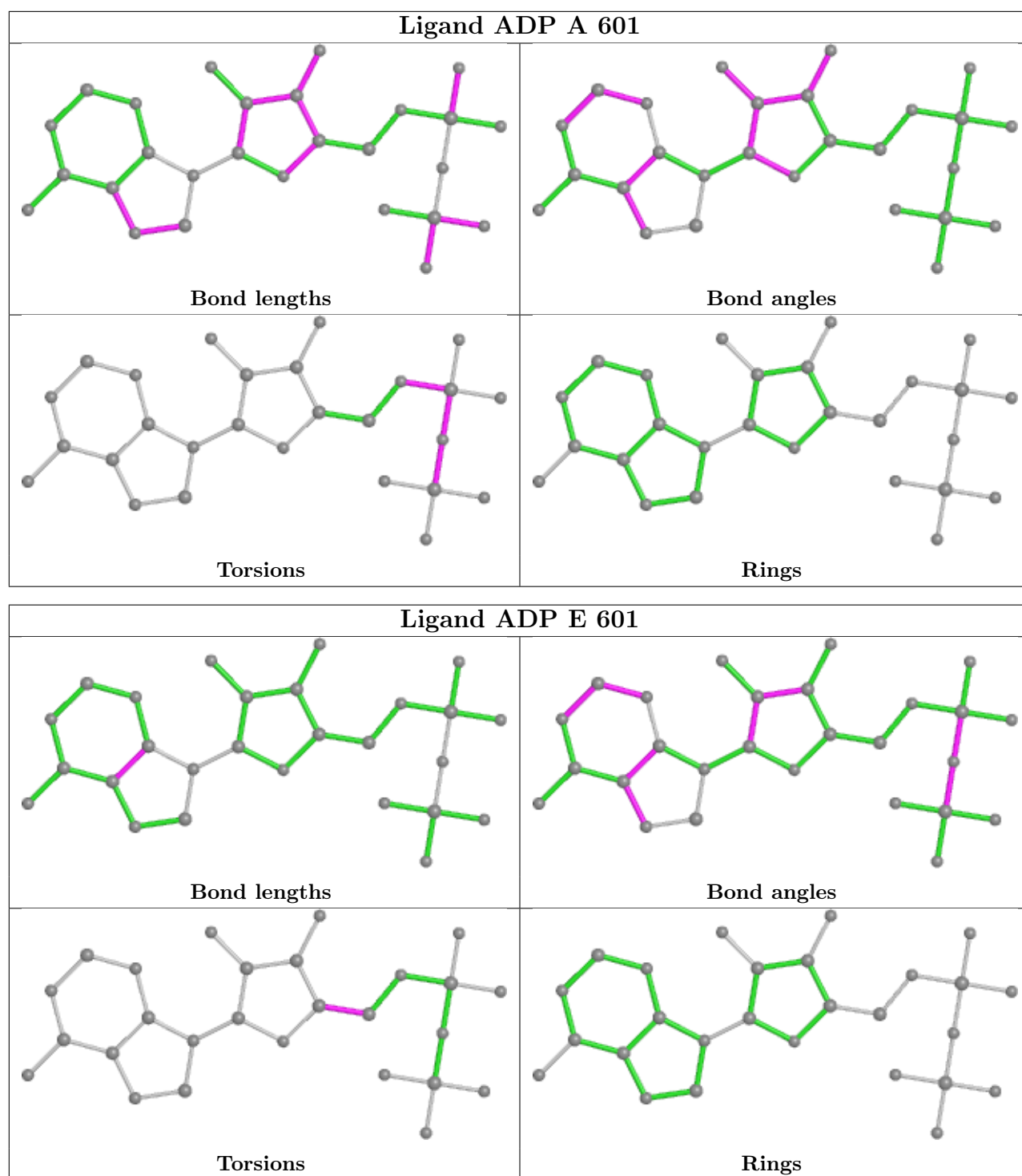
There are no ring outliers.

5 monomers are involved in 17 short contacts:

Mol	Chain	Res	Type	Clashes	Symm-Clashes
5	C	604	BGC	5	0
2	A	601	ADP	3	0
5	A	604	BGC	4	0
2	E	601	ADP	3	0
5	E	604	BGC	2	0

The following is a two-dimensional graphical depiction of Mogul quality analysis of bond lengths, bond angles, torsion angles, and ring geometry for all instances of the Ligand of Interest. In addition, ligands with molecular weight > 250 and outliers as shown on the validation Tables will also be included. For torsion angles, if less than 5% of the Mogul distribution of torsion angles is within 10 degrees of the torsion angle in question, then that torsion angle is considered an outlier. Any bond that is central to one or more torsion angles identified as an outlier by Mogul will be highlighted in the graph. For rings, the root-mean-square deviation (RMSD) between the ring in question and similar rings identified by Mogul is calculated over all ring torsion angles. If the average RMSD is greater than 60 degrees and the minimal RMSD between the ring in question and any Mogul-identified rings is also greater than 60 degrees, then that ring is considered an outlier. The outliers are highlighted in purple. The color gray indicates Mogul did not find sufficient equivalents in the CSD to analyse the geometry.





5.7 Other polymers [\(i\)](#)

There are no such residues in this entry.

5.8 Polymer linkage issues

There are no chain breaks in this entry.

6 Fit of model and data [i](#)

6.1 Protein, DNA and RNA chains [i](#)

In the following table, the column labelled '#RSRZ > 2' contains the number (and percentage) of RSRZ outliers, followed by percent RSRZ outliers for the chain as percentile scores relative to all X-ray entries and entries of similar resolution. The OWAB column contains the minimum, median, 95th percentile and maximum values of the occupancy-weighted average B-factor per residue. The column labelled 'Q < 0.9' lists the number of (and percentage) of residues with an average occupancy less than 0.9.

Mol	Chain	Analysed	<RSRZ>	#RSRZ>2	OWAB(Å ²)	Q<0.9
1	A	465/465 (100%)	-0.34	3 (0%) 89 72	12, 25, 52, 114	0
1	C	465/465 (100%)	-0.27	3 (0%) 89 72	12, 25, 52, 75	0
1	E	465/465 (100%)	-0.27	4 (0%) 84 63	17, 35, 58, 120	0
All	All	1395/1395 (100%)	-0.29	10 (0%) 87 69	12, 28, 55, 120	0

All (10) RSRZ outliers are listed below:

Mol	Chain	Res	Type	RSRZ
1	A	436	SER	4.2
1	C	436	SER	4.1
1	E	437	ASP	3.7
1	E	436	SER	3.3
1	A	440	GLN	3.0
1	A	439	SER	2.9
1	E	441	LYS	2.6
1	C	437	ASP	2.3
1	E	440	GLN	2.3
1	C	171	HIS	2.0

6.2 Non-standard residues in protein, DNA, RNA chains [i](#)

There are no non-standard protein/DNA/RNA residues in this entry.

6.3 Carbohydrates [i](#)

There are no monosaccharides in this entry.

6.4 Ligands

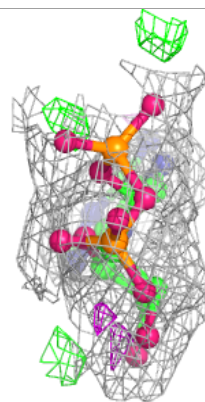
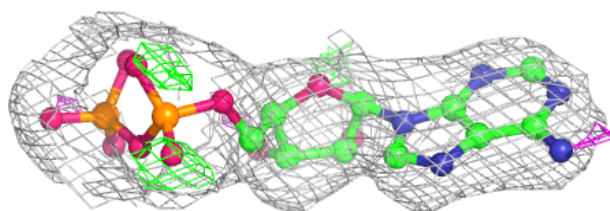
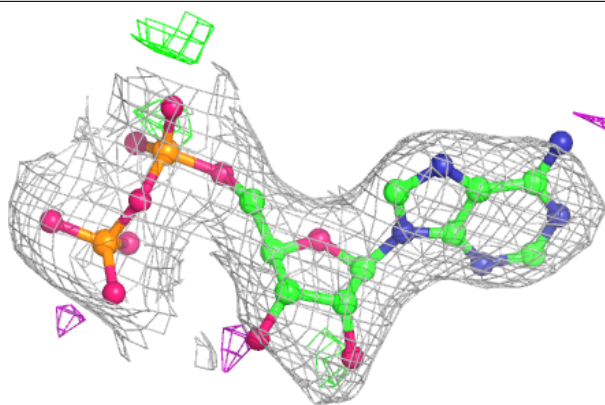
In the following table, the Atoms column lists the number of modelled atoms in the group and the number defined in the chemical component dictionary. The B-factors column lists the minimum, median, 95th percentile and maximum values of B factors of atoms in the group. The column labelled 'Q< 0.9' lists the number of atoms with occupancy less than 0.9.

Mol	Type	Chain	Res	Atoms	RSCC	RSR	B-factors(Å ²)	Q<0.9
4	MG	E	603	1/1	0.69	0.30	39,39,39,39	0
4	MG	A	603	1/1	0.91	0.44	41,41,41,41	0
2	ADP	E	601	27/27	0.92	0.19	19,25,35,56	0
3	PO4	E	602	5/5	0.92	0.17	32,36,39,41	0
3	PO4	C	602	5/5	0.94	0.20	27,28,36,41	0
5	BGC	C	604	12/12	0.94	0.23	12,13,22,23	0
5	BGC	A	604	12/12	0.94	0.19	13,14,22,22	0
3	PO4	A	602	5/5	0.96	0.14	27,30,50,51	0
4	MG	C	603	1/1	0.96	0.58	43,43,43,43	0
5	BGC	E	604	12/12	0.96	0.21	18,20,25,30	0
2	ADP	C	601	27/27	0.97	0.17	14,17,26,35	0
2	ADP	A	601	27/27	0.97	0.14	13,17,29,38	0

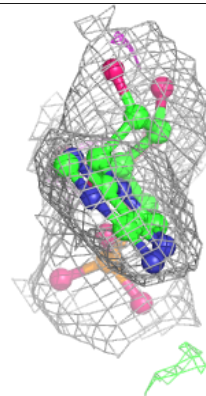
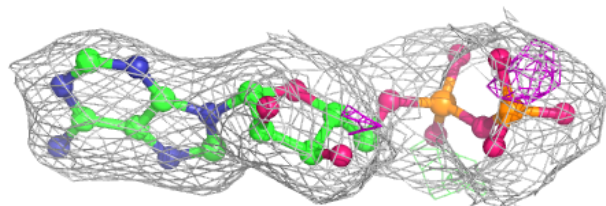
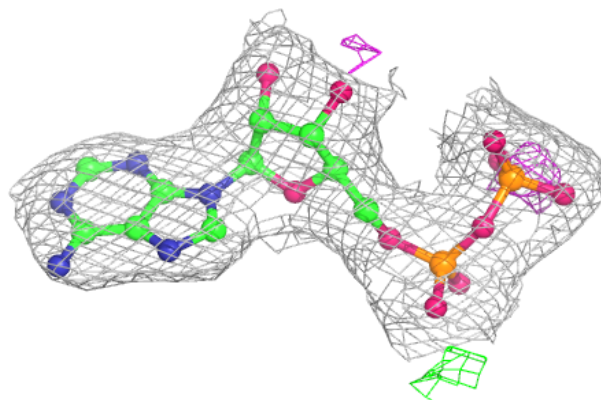
The following is a graphical depiction of the model fit to experimental electron density of all instances of the Ligand of Interest. In addition, ligands with molecular weight > 250 and outliers as shown on the geometry validation Tables will also be included. Each fit is shown from different orientation to approximate a three-dimensional view.

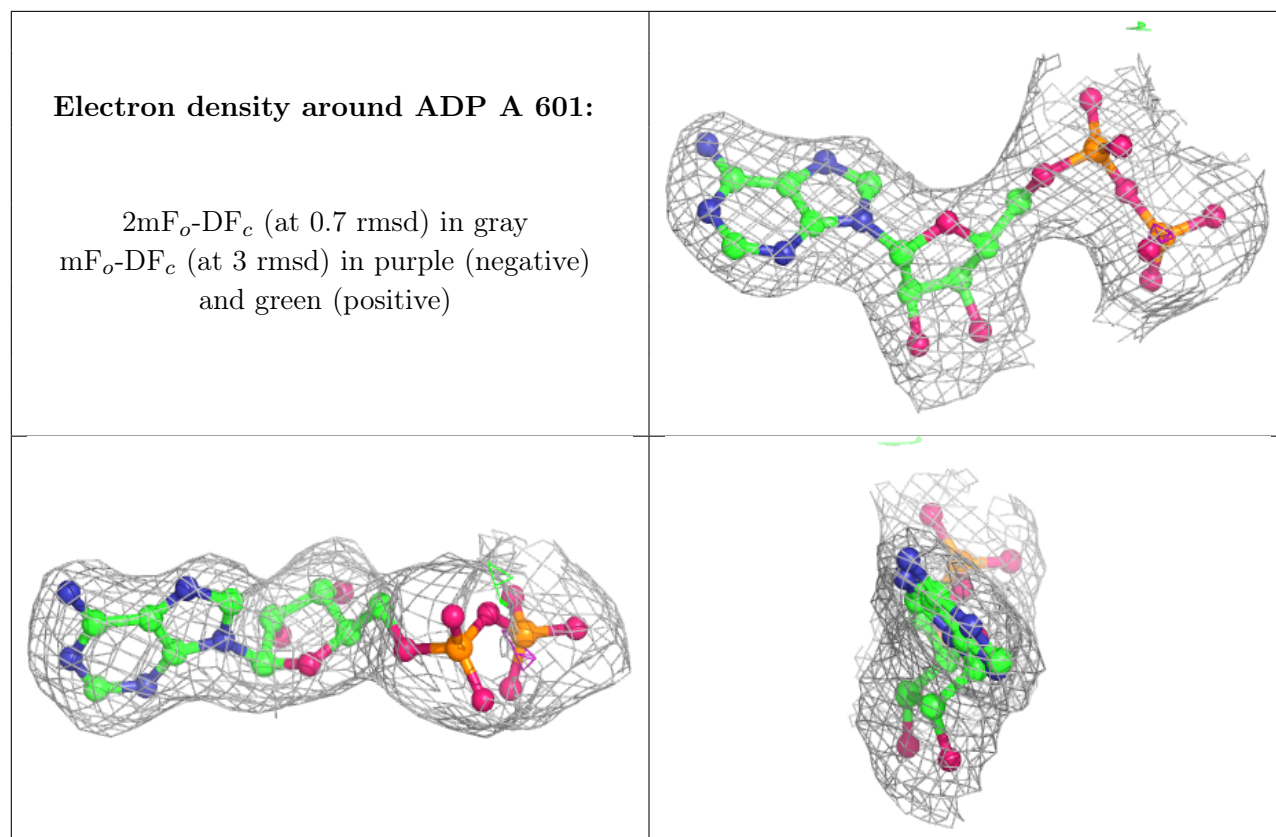
Electron density around ADP E 601:

$2mF_o-DF_c$ (at 0.7 rmsd) in gray
 mF_o-DF_c (at 3 rmsd) in purple (negative)
and green (positive)

**Electron density around ADP C 601:**

$2mF_o-DF_c$ (at 0.7 rmsd) in gray
 mF_o-DF_c (at 3 rmsd) in purple (negative)
and green (positive)





6.5 Other polymers [i](#)

There are no such residues in this entry.