



wwPDB NMR Structure Validation Summary Report ⓘ

Jun 24, 2024 – 11:35 AM EDT

PDB ID : 7JK8
BMRB ID : 50411
Title : EmrE S64V mutant bound to tetra(4-fluorophenyl)phosphonium at pH 5.8
Authors : Shcherbakov, A.A.; Hisao, G.; Mandala, V.S.; Thomas, N.E.; Soltani, M.;
Salter, E.A.; Davis Jr., J.H.; Henzler-Wildman, K.A.; Hong, M.
Deposited on : 2020-07-27

This is a wwPDB NMR Structure Validation Summary Report for a publicly released PDB entry.

We welcome your comments at validation@mail.wwpdb.org

A user guide is available at

<https://www.wwpdb.org/validation/2017/NMRValidationReportHelp>

with specific help available everywhere you see the ⓘ symbol.

The types of validation reports are described at

<http://www.wwpdb.org/validation/2017/FAQs#types>.

The following versions of software and data (see [references ⓘ](#)) were used in the production of this report:

MolProbity : 4.02b-467
Mogul : 2022.3.0, CSD as543be (2022)
buster-report : 1.1.7 (2018)
Percentile statistics : 20191225.v01 (using entries in the PDB archive December 25th 2019)
wwPDB-RCI : v_1n_11_5_13_A (Berjanski et al., 2005)
PANAV : Wang et al. (2010)
wwPDB-ShiftChecker : v1.2
Ideal geometry (proteins) : Engh & Huber (2001)
Ideal geometry (DNA, RNA) : Parkinson et al. (1996)
Validation Pipeline (wwPDB-VP) : 2.37.1

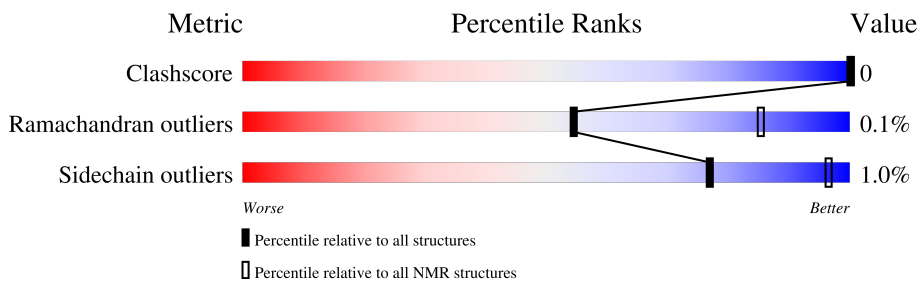
1 Overall quality at a glance

The following experimental techniques were used to determine the structure:

SOLID-STATE NMR

The overall completeness of chemical shifts assignment is 25%.

Percentile scores (ranging between 0-100) for global validation metrics of the entry are shown in the following graphic. The table shows the number of entries on which the scores are based.



Metric	Whole archive (#Entries)	NMR archive (#Entries)
Clashscore	158937	12864
Ramachandran outliers	154571	11451
Sidechain outliers	154315	11428

The table below summarises the geometric issues observed across the polymeric chains and their fit to the experimental data. The red, orange, yellow and green segments indicate the fraction of residues that contain outliers for ≥ 3 , 2, 1 and 0 types of geometric quality criteria. A cyan segment indicates the fraction of residues that are not part of the well-defined cores, and a grey segment represents the fraction of residues that are not modelled. The numeric value for each fraction is indicated below the corresponding segment, with a dot representing fractions $\leq 5\%$

Mol	Chain	Length	Quality of chain
1	A	110	
1	B	110	

2 Ensemble composition and analysis

This entry contains 10 models. Model 7 is the overall representative, medoid model (most similar to other models). The authors have identified model 1 as representative, based on the following criterion: *lowest energy*.

The following residues are included in the computation of the global validation metrics.

Well-defined (core) protein residues			
Well-defined core	Residue range (total)	Backbone RMSD (Å)	Medoid model
1	A:4-A:105, B:4-B:23, B:31-B:105 (197)	1.32	7

Ill-defined regions of proteins are excluded from the global statistics.

Ligands and non-protein polymers are included in the analysis.

The models can be grouped into 3 clusters and 2 single-model clusters were found.

Cluster number	Models
1	3, 4, 6, 7
2	2, 8
3	1, 10
Single-model clusters	5; 9

3 Entry composition [i](#)

There are 2 unique types of molecules in this entry. The entry contains 3239 atoms, of which 1654 are hydrogens and 0 are deuteriums.

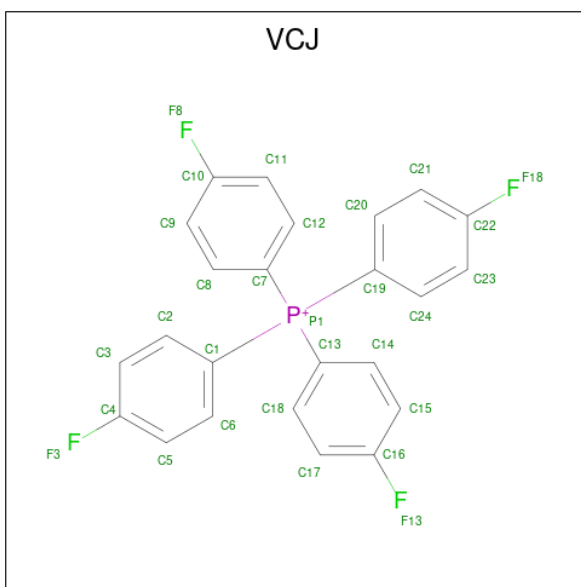
- Molecule 1 is a protein called Multidrug SMR transporter.

Mol	Chain	Residues	Atoms					Trace	
			Total	C	H	N	O		S
1	A	102	1597	528	819	116	128	6	0
1	B	102	1597	528	819	116	128	6	0

There are 2 discrepancies between the modelled and reference sequences:

Chain	Residue	Modelled	Actual	Comment	Reference
A	64	VAL	SER	engineered mutation	UNP A0A2X7QID6
B	64	VAL	SER	engineered mutation	UNP A0A2X7QID6

- Molecule 2 is tetrakis(4-fluorophenyl)phosphonium (three-letter code: VCJ) (formula: $C_{24}H_{16}F_4P$).



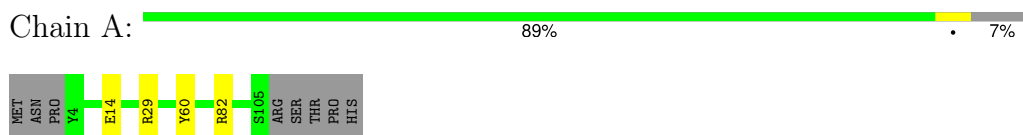
Mol	Chain	Residues	Atoms				
			Total	C	F	H	P
2	A	1	45	24	4	16	1

4 Residue-property plots

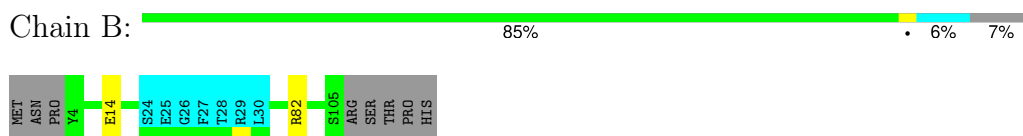
4.1 Average score per residue in the NMR ensemble

These plots are provided for all protein, RNA, DNA and oligosaccharide chains in the entry. The first graphic is the same as shown in the summary in section 1 of this report. The second graphic shows the sequence where residues are colour-coded according to the number of geometric quality criteria for which they contain at least one outlier: green = 0, yellow = 1, orange = 2 and red = 3 or more. Stretches of 2 or more consecutive residues without any outliers are shown as green connectors. Residues which are classified as ill-defined in the NMR ensemble, are shown in cyan with an underline colour-coded according to the previous scheme. Residues which were present in the experimental sample, but not modelled in the final structure are shown in grey.

- Molecule 1: Multidrug SMR transporter



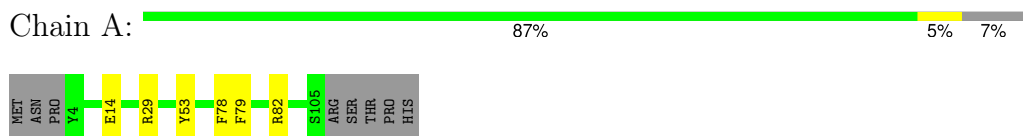
- Molecule 1: Multidrug SMR transporter



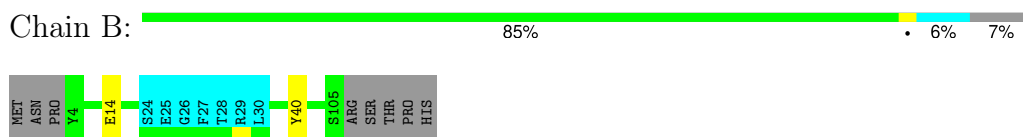
4.2 Residue scores for the representative (medoid) model from the NMR ensemble

The representative model is number 7. Colouring as in section 4.1 above.

- Molecule 1: Multidrug SMR transporter



- Molecule 1: Multidrug SMR transporter



5 Refinement protocol and experimental data overview

The models were refined using the following method: *molecular dynamics*.

Of the 160 calculated structures, 10 were deposited, based on the following criterion: *structures with the least restraint violations*.

The following table shows the software used for structure solution, optimisation and refinement.

Software name	Classification	Version
GROMACS	refinement	2019.1
HADDOCK WEBSERVER	structure solution	2.4
TopSpin	structure solution	2.1-4.0
NMRFAM-SPARKY	structure solution	1.414
1.470	structure solution	

The following table shows chemical shift validation statistics as aggregates over all chemical shift files. Detailed validation can be found in section 7 of this report.

Chemical shift file(s)	working_cs.cif
Number of chemical shift lists	1
Total number of shifts	727
Number of shifts mapped to atoms	714
Number of unparsed shifts	0
Number of shifts with mapping errors	13
Number of shifts with mapping warnings	0
Assignment completeness (well-defined parts)	25%

Note: This is a solid-state NMR structure, where hydrogen atoms are typically not assigned a chemical shift value, which may lead to lower completeness of assignment measure.

6 Model quality i

6.1 Standard geometry i

Bond lengths and bond angles in the following residue types are not validated in this section: VCJ

The Z score for a bond length (or angle) is the number of standard deviations the observed value is removed from the expected value. A bond length (or angle) with $|Z| > 5$ is considered an outlier worth inspection. RMSZ is the (average) root-mean-square of all Z scores of the bond lengths (or angles).

Mol	Chain	Bond lengths		Bond angles	
		RMSZ	#Z>5	RMSZ	#Z>5
1	A	0.82±0.01	1±0/798 (0.1± 0.0%)	0.99±0.03	4±1/1090 (0.4± 0.1%)
1	B	0.81±0.01	1±0/741 (0.1± 0.0%)	0.94±0.03	2±1/1014 (0.2± 0.1%)
All	All	0.81	20/15390 (0.1%)	0.97	63/21040 (0.3%)

Chiral center outliers are detected by calculating the chiral volume of a chiral center and verifying if the center is modelled as a planar moiety or with the opposite hand. A planarity outlier is detected by checking planarity of atoms in a peptide group, atoms in a mainchain group or atoms of a sidechain that are expected to be planar.

Mol	Chain	Chirality	Planarity
1	A	0.0±0.0	0.4±0.7
1	B	0.0±0.0	0.1±0.3
All	All	0	5

All unique bond outliers are listed below. They are sorted according to the Z-score of the worst occurrence in the ensemble.

Mol	Chain	Res	Type	Atoms	Z	Observed(Å)	Ideal(Å)	Models	
								Worst	Total
1	B	14	GLU	CD-OE2	11.45	1.38	1.25	9	10
1	A	14	GLU	CD-OE2	11.10	1.37	1.25	4	10

5 of 14 unique angle outliers are listed below. They are sorted according to the Z-score of the worst occurrence in the ensemble.

Mol	Chain	Res	Type	Atoms	Z	Observed(°)	Ideal(°)	Models	
								Worst	Total
1	A	29	ARG	NE-CZ-NH1	12.60	126.60	120.30	1	8
1	B	82	ARG	NE-CZ-NH1	9.63	125.11	120.30	3	8
1	A	60	TYR	CB-CG-CD1	-8.58	115.85	121.00	10	5
1	A	82	ARG	NE-CZ-NH1	8.37	124.49	120.30	4	8

Continued on next page...

Continued from previous page...

Mol	Chain	Res	Type	Atoms	Z	Observed(°)	Ideal(°)	Models	
								Worst	Total
1	A	60	TYR	CB-CG-CD2	7.71	125.63	121.00	10	5

There are no chirality outliers.

All unique planar outliers are listed below. They are sorted by the frequency of occurrence in the ensemble.

Mol	Chain	Res	Type	Group	Models (Total)
1	A	82	ARG	Sidechain	2
1	A	6	TYR	Sidechain	1
1	B	60	TYR	Sidechain	1
1	A	60	TYR	Sidechain	1

6.2 Too-close contacts [i](#)

In the following table, the Non-H and H(model) columns list the number of non-hydrogen atoms and hydrogen atoms in each chain respectively. The H(added) column lists the number of hydrogen atoms added and optimized by MolProbity. The Clashes column lists the number of clashes averaged over the ensemble.

Mol	Chain	Non-H	H(model)	H(added)	Clashes
All	All	15290	16000	15800	-

The all-atom clashscore is defined as the number of clashes found per 1000 atoms (including hydrogen atoms). The all-atom clashscore for this structure is -.

There are no clashes.

6.3 Torsion angles [i](#)

6.3.1 Protein backbone [i](#)

In the following table, the Percentiles column shows the percent Ramachandran outliers of the chain as a percentile score with respect to all PDB entries followed by that with respect to all NMR entries. The Analysed column shows the number of residues for which the backbone conformation was analysed and the total number of residues.

Mol	Chain	Analysed	Favoured	Allowed	Outliers	Percentiles
1	A	100/110 (91%)	98±1 (98±1%)	2±1 (2±1%)	0±0 (0±0%)	54 85
1	B	93/110 (85%)	92±1 (99±1%)	1±1 (1±1%)	0±0 (0±0%)	100 100

Continued on next page...

Continued from previous page...

Mol	Chain	Analysed	Favoured	Allowed	Outliers	Percentiles
All	All	1930/2200 (88%)	1896 (98%)	33 (2%)	1 (0%)	54 85

All 1 unique Ramachandran outliers are listed below.

Mol	Chain	Res	Type	Models (Total)
1	A	78	PHE	1

6.3.2 Protein sidechains [i](#)

In the following table, the Percentiles column shows the percent sidechain outliers of the chain as a percentile score with respect to all PDB entries followed by that with respect to all NMR entries. The Analysed column shows the number of residues for which the sidechain conformation was analysed and the total number of residues.

Mol	Chain	Analysed	Rotameric	Outliers	Percentiles
1	A	81/89 (91%)	80±1 (99±1%)	1±1 (1±1%)	72 96
1	B	75/89 (84%)	74±0 (99±1%)	0±0 (1±1%)	84 97
All	All	1560/1780 (88%)	1545 (99%)	15 (1%)	77 96

5 of 11 unique residues with a non-rotameric sidechain are listed below. They are sorted by the frequency of occurrence in the ensemble.

Mol	Chain	Res	Type	Models (Total)
1	A	14	GLU	4
1	A	50	THR	2
1	A	29	ARG	1
1	A	73	LEU	1
1	B	22	LYS	1

6.3.3 RNA [i](#)

There are no RNA molecules in this entry.

6.4 Non-standard residues in protein, DNA, RNA chains [i](#)

There are no non-standard protein/DNA/RNA residues in this entry.

6.5 Carbohydrates [i](#)

There are no monosaccharides in this entry.

6.6 Ligand geometry [i](#)

1 ligand is modelled in this entry.

In the following table, the Counts columns list the number of bonds for which Mogul statistics could be retrieved, the number of bonds that are observed in the model and the number of bonds that are defined in the chemical component dictionary. The Link column lists molecule types, if any, to which the group is linked. The Z score for a bond length is the number of standard deviations the observed value is removed from the expected value. A bond length with $|Z| > 2$ is considered an outlier worth inspection. RMSZ is the average root-mean-square of all Z scores of the bond lengths.

Mol	Type	Chain	Res	Link	Bond lengths		
					Counts	RMSZ	#Z>2
2	VCJ	A	201	-	32,32,32	1.53±0.04	11±1 (33±3%)

In the following table, the Counts columns list the number of angles for which Mogul statistics could be retrieved, the number of angles that are observed in the model and the number of angles that are defined in the chemical component dictionary. The Link column lists molecule types, if any, to which the group is linked. The Z score for a bond angle is the number of standard deviations the observed value is removed from the expected value. A bond angle with $|Z| > 2$ is considered an outlier worth inspection. RMSZ is the average root-mean-square of all Z scores of the bond angles.

Mol	Type	Chain	Res	Link	Bond angles		
					Counts	RMSZ	#Z>2
2	VCJ	A	201	-	46,46,46	0.81±0.07	1±1 (1±1%)

In the following table, the Chirals column lists the number of chiral outliers, the number of chiral centers analysed, the number of these observed in the model and the number defined in the chemical component dictionary. Similar counts are reported in the Torsion and Rings columns. '-' means no outliers of that kind were identified.

Mol	Type	Chain	Res	Link	Chirals	Torsions	Rings
2	VCJ	A	201	-	-	0±0,24,24,24	0±0,4,4,4

5 of 12 unique bond outliers are listed below. They are sorted according to the Z-score of the worst occurrence in the ensemble.

Mol	Chain	Res	Type	Atoms	Z	Observed(Å)	Ideal(Å)	Models	
								Worst	Total
2	A	201	VCJ	P1-C13	2.94	1.85	1.79	1	10
2	A	201	VCJ	P1-C19	2.65	1.84	1.79	10	6
2	A	201	VCJ	P1-C1	2.57	1.84	1.79	3	8
2	A	201	VCJ	C2-C1	2.56	1.43	1.39	10	10
2	A	201	VCJ	C20-C19	2.49	1.43	1.39	10	10

All unique angle outliers are listed below. They are sorted according to the Z-score of the worst occurrence in the ensemble.

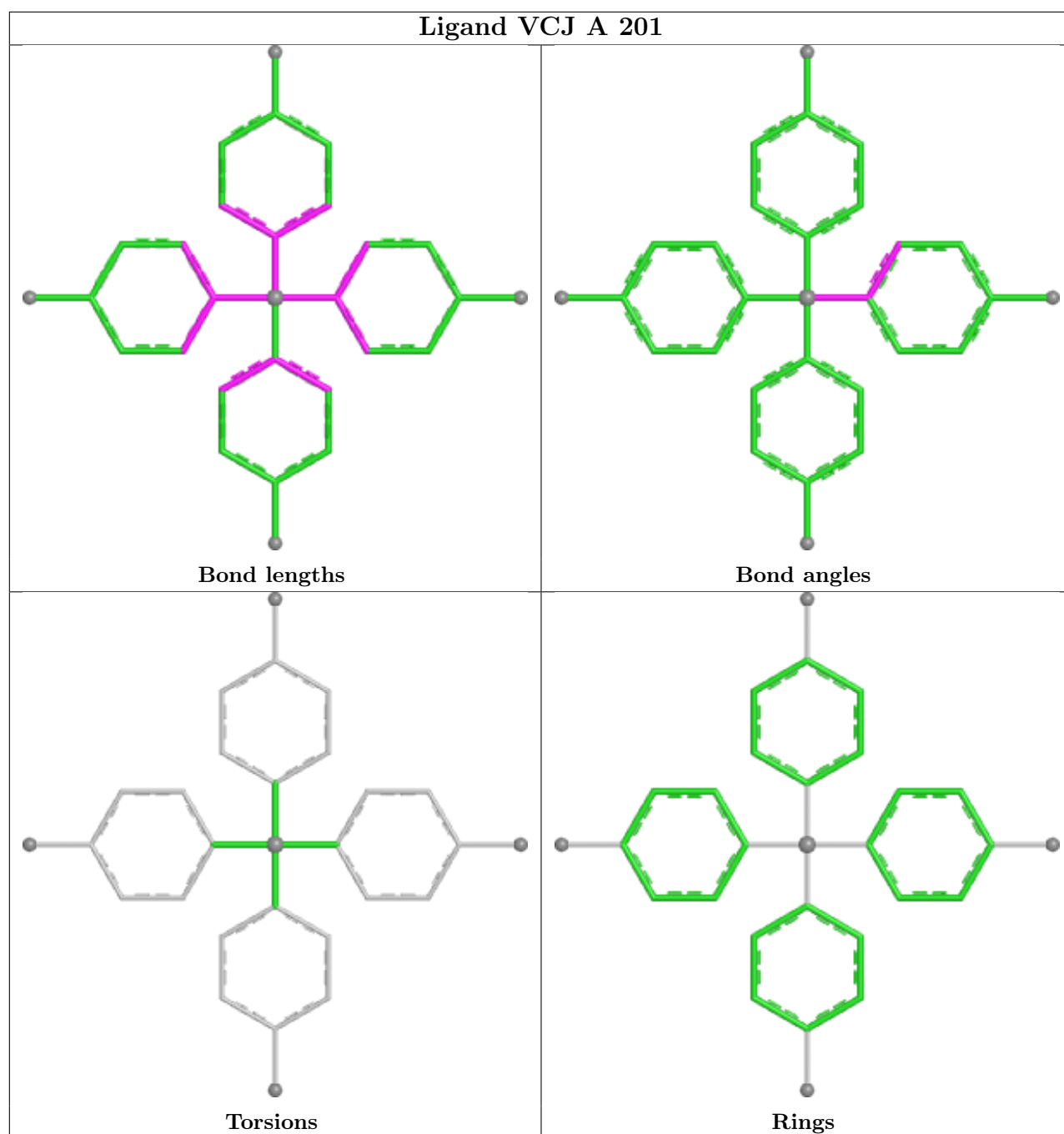
Mol	Chain	Res	Type	Atoms	Z	Observed(°)	Ideal(°)	Models	
								Worst	Total
2	A	201	VCJ	P1-C7-C12	2.63	124.70	120.05	2	1
2	A	201	VCJ	P1-C19-C24	2.53	124.53	120.05	10	3
2	A	201	VCJ	P1-C13-C18	2.46	124.40	120.05	3	1
2	A	201	VCJ	P1-C13-C14	2.40	124.30	120.05	1	2
2	A	201	VCJ	P1-C7-C8	2.27	124.07	120.05	9	1

There are no chirality outliers.

There are no torsion outliers.

There are no ring outliers.

The following is a two-dimensional graphical depiction of Mogul quality analysis of bond lengths, bond angles, torsion angles, and ring geometry for all instances of the Ligand of Interest. In addition, ligands with molecular weight > 250 and outliers as shown on the validation Tables will also be included. For torsion angles, if less than 5% of the Mogul distribution of torsion angles is within 10 degrees of the torsion angle in question, then that torsion angle is considered an outlier. Any bond that is central to one or more torsion angles identified as an outlier by Mogul will be highlighted in the graph. For rings, the root-mean-square deviation (RMSD) between the ring in question and similar rings identified by Mogul is calculated over all ring torsion angles. If the average RMSD is greater than 60 degrees and the minimal RMSD between the ring in question and any Mogul-identified rings is also greater than 60 degrees, then that ring is considered an outlier. The outliers are highlighted in purple. The color gray indicates Mogul did not find sufficient equivalents in the CSD to analyse the geometry.



6.7 Other polymers [\(i\)](#)

There are no such molecules in this entry.

6.8 Polymer linkage issues [\(i\)](#)

There are no chain breaks in this entry.

7 Chemical shift validation

The completeness of assignment taking into account all chemical shift lists is 25% for the well-defined parts and 25% for the entire structure.

7.1 Chemical shift list 1

File name: working_cs.cif

Chemical shift list name: 50411

7.1.1 Bookkeeping

The following table shows the results of parsing the chemical shift list and reports the number of nuclei with statistically unusual chemical shifts.

Total number of shifts	727
Number of shifts mapped to atoms	714
Number of unparsed shifts	0
Number of shifts with mapping errors	13
Number of shifts with mapping warnings	0
Number of shift outliers (ShiftChecker)	0

The following assigned chemical shifts were not mapped to the molecules present in the coordinate file.

- No matching atom found in the structure. First 5 (of 13) occurrences are reported below.

List ID	Chain	Res	Type	Atom	Shift Data		
					Value	Uncertainty	Ambiguity
1	A	3	PRO	C	177.689	0	1
1	A	3	PRO	CA	64.223	0	1
1	A	106	ARG	CA	55.815	0	1
1	A	106	ARG	H	9.431	0.03	1
1	A	106	ARG	N	127.5	0.02	1
1	B	3	PRO	C	177.785	0	1
1	B	3	PRO	CA	64.223	0	1
1	B	106	ARG	C	176.941	0	1
1	B	106	ARG	CA	54.439	0.1	1
1	B	106	ARG	CB	29.958	0	1
1	B	106	ARG	CG	26.933	0	1
1	B	106	ARG	H	9.948	0.03	1
1	B	106	ARG	N	129.385	0.17	1

7.1.2 Chemical shift referencing [i](#)

The following table shows the suggested chemical shift referencing corrections.

Nucleus	# values	Correction \pm precision, ppm	Suggested action
$^{13}\text{C}_\alpha$	166	-1.00 ± 0.20	Should be checked
$^{13}\text{C}_\beta$	77	0.74 ± 0.13	Should be checked
$^{13}\text{C}'$	166	-0.41 ± 0.11	None needed (< 0.5 ppm)
^{15}N	133	1.73 ± 0.29	Should be applied

7.1.3 Completeness of resonance assignments [i](#)

The following table shows the completeness of the chemical shift assignments for the well-defined regions of the structure. The overall completeness is 25%, i.e. 695 atoms were assigned a chemical shift out of a possible 2732. 0 out of 43 assigned methyl groups (LEU and VAL) were assigned stereospecifically.

	Total	^1H	^{13}C	^{15}N
Backbone	569/996 (57%)	126/411 (31%)	315/394 (80%)	128/191 (67%)
Sidechain	119/1460 (8%)	0/994 (0%)	119/449 (27%)	0/17 (0%)
Aromatic	7/276 (3%)	2/133 (2%)	3/135 (2%)	2/8 (25%)
Overall	695/2732 (25%)	128/1538 (8%)	437/978 (45%)	130/216 (60%)

Note: This is a solid-state NMR structure, where hydrogen atoms are typically not assigned a chemical shift value, which may lead to lower completeness of assignment measure.

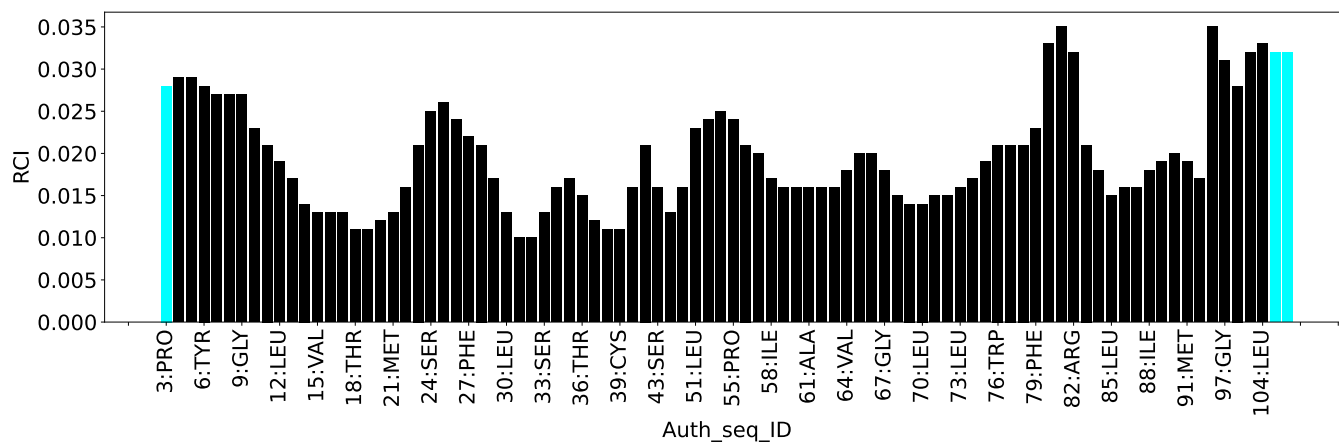
7.1.4 Statistically unusual chemical shifts [i](#)

There are no statistically unusual chemical shifts.

7.1.5 Random Coil Index (RCI) plots [i](#)

The image below reports *random coil index* values for the protein chains in the structure. The height of each bar gives a probability of a given residue to be disordered, as predicted from the available chemical shifts and the amino acid sequence. A value above 0.2 is an indication of significant predicted disorder. The colour of the bar shows whether the residue is in the well-defined core (black) or in the ill-defined residue ranges (cyan), as described in section 2 on ensemble composition. If well-defined core and ill-defined regions are not identified then it is shown as gray bars.

Random coil index (RCI) for chain A:



Random coil index (RCI) for chain B:

