



Full wwPDB EM Validation Report ⓘ

Dec 13, 2022 – 04:59 PM JST

PDB ID : 6JMQ
EMDB ID : EMD-9849
Title : LAT1-CD98hc complex bound to MEM-108 Fab
Authors : Lee, Y.; Nishizawa, T.; Kusakizako, T.; Oda, K.; Ishitani, R.; Nakane, T.; Nureki, O.
Deposited on : 2019-03-13
Resolution : 3.31 Å(reported)

This is a Full wwPDB EM Validation Report for a publicly released PDB entry.

We welcome your comments at validation@mail.wwpdb.org

A user guide is available at

<https://www.wwpdb.org/validation/2017/EMValidationReportHelp>

with specific help available everywhere you see the ⓘ symbol.

The types of validation reports are described at

<http://www.wwpdb.org/validation/2017/FAQs#types>.

The following versions of software and data (see [references ⓘ](#)) were used in the production of this report:

EMDB validation analysis : **FAILED**
Mogul : 1.8.5 (274361), CSD as541be (2020)
MolProbity : 4.02b-467
buster-report : 1.1.7 (2018)
Percentile statistics : 20191225.v01 (using entries in the PDB archive December 25th 2019)
MapQ : **FAILED**
Ideal geometry (proteins) : Engh & Huber (2001)
Ideal geometry (DNA, RNA) : Parkinson et al. (1996)
Validation Pipeline (wwPDB-VP) : 2.31.3

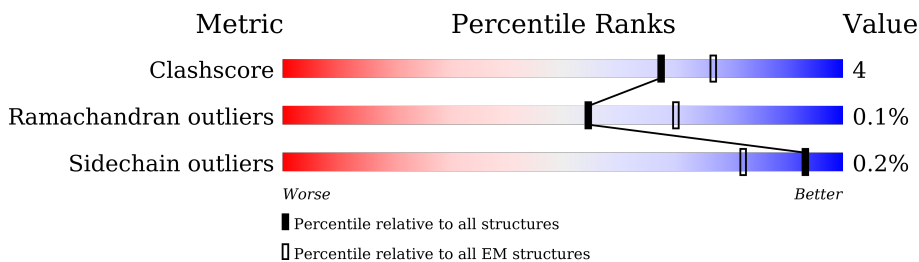
1 Overall quality at a glance

The following experimental techniques were used to determine the structure:

ELECTRON MICROSCOPY

The reported resolution of this entry is 3.31 Å.

Percentile scores (ranging between 0-100) for global validation metrics of the entry are shown in the following graphic. The table shows the number of entries on which the scores are based.



Metric	Whole archive (#Entries)	EM structures (#Entries)
Clashscore	158937	4297
Ramachandran outliers	154571	4023
Sidechain outliers	154315	3826

The table below summarises the geometric issues observed across the polymeric chains and their fit to the map. The red, orange, yellow and green segments of the bar indicate the fraction of residues that contain outliers for ≥ 3 , 2, 1 and 0 types of geometric quality criteria respectively. A grey segment represents the fraction of residues that are not modelled. The numeric value for each fraction is indicated below the corresponding segment, with a dot representing fractions $\leq 5\%$

Mol	Chain	Length	Quality of chain
1	A	515	
2	B	631	
3	C	219	
4	D	219	
5	E	2	

2 Entry composition

There are 7 unique types of molecules in this entry. The entry contains 9950 atoms, of which 0 are hydrogens and 0 are deuteriums.

In the tables below, the AltConf column contains the number of residues with at least one atom in alternate conformation and the Trace column contains the number of residues modelled with at most 2 atoms.

- Molecule 1 is a protein called Large neutral amino acids transporter small subunit 1.

Mol	Chain	Residues	Atoms					AltConf	Trace
			Total	C	N	O	S		
1	A	403	3101	2093	468	525	15	0	0

There are 8 discrepancies between the modelled and reference sequences:

Chain	Residue	Modelled	Actual	Comment	Reference
A	508	ASP	-	expression tag	UNP Q01650
A	509	TYR	-	expression tag	UNP Q01650
A	510	LYS	-	expression tag	UNP Q01650
A	511	ASP	-	expression tag	UNP Q01650
A	512	ASP	-	expression tag	UNP Q01650
A	513	ASP	-	expression tag	UNP Q01650
A	514	ASP	-	expression tag	UNP Q01650
A	515	LYS	-	expression tag	UNP Q01650

- Molecule 2 is a protein called 4F2 cell-surface antigen heavy chain.

Mol	Chain	Residues	Atoms					AltConf	Trace
			Total	C	N	O	S		
2	B	451	3520	2248	605	660	7	0	0

There are 2 discrepancies between the modelled and reference sequences:

Chain	Residue	Modelled	Actual	Comment	Reference
B	0	GLY	-	expression tag	UNP P08195
B	1	SER	-	expression tag	UNP P08195

- Molecule 3 is a protein called Antibody.

Mol	Chain	Residues	Atoms					AltConf	Trace
			Total	C	N	O	S		
3	C	214	1526	960	260	300	6	0	0

- Molecule 4 is a protein called Antibody.

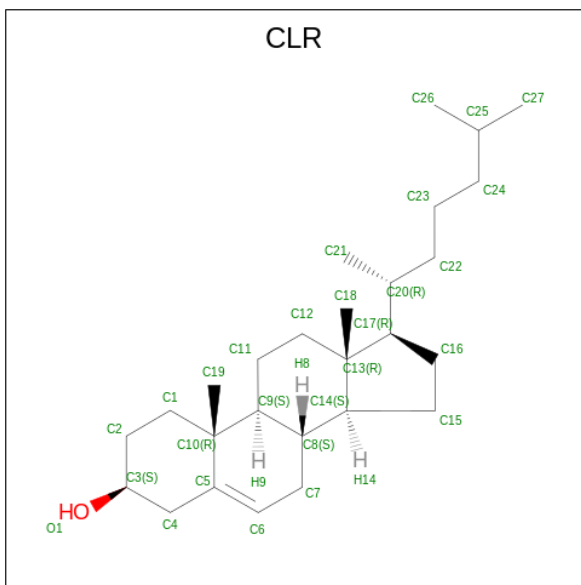
Mol	Chain	Residues	Atoms					AltConf	Trace
			Total	C	N	O	S		
4	D	219	1593	992	268	326	7	0	0

- Molecule 5 is an oligosaccharide called 2-acetamido-2-deoxy-beta-D-glucopyranose-(1-4)-2-acetamido-2-deoxy-beta-D-glucopyranose.



Mol	Chain	Residues	Atoms				AltConf	Trace
			Total	C	N	O		
5	E	2	28	16	2	10	0	0

- Molecule 6 is CHOLESTEROL (three-letter code: CLR) (formula: C₂₇H₄₆O).



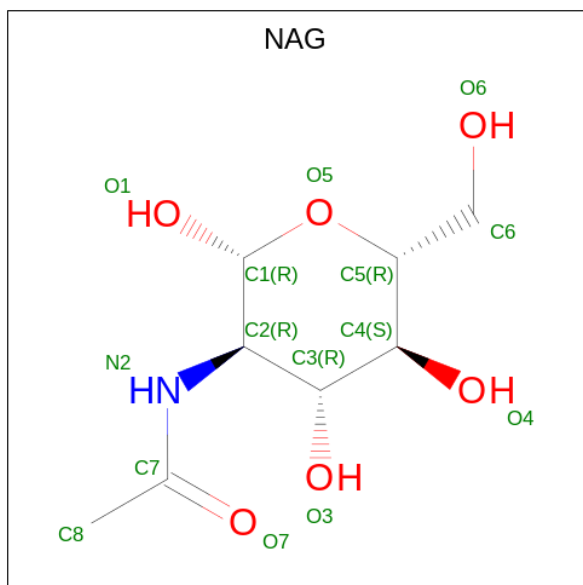
Mol	Chain	Residues	Atoms			AltConf
			Total	C	O	
6	A	1	112	108	4	0
6	A	1	112	108	4	0
6	A	1	112	108	4	0
6	A	1	112	108	4	0

Continued on next page...

Continued from previous page...


Mol	Chain	Residues	Atoms			AltConf
			Total	C	O	
6	B	1	28	27	1	0

- Molecule 7 is 2-acetamido-2-deoxy-beta-D-glucopyranose (three-letter code: NAG) (formula: $C_8H_{15}NO_6$).



Mol	Chain	Residues	Atoms				AltConf
			Total	C	N	O	
7	B	1	42	24	3	15	0
7	B	1	42	24	3	15	0
7	B	1	42	24	3	15	0

- Molecule 4: Antibody

Chain D:  89% 11%



- Molecule 5: 2-acetamido-2-deoxy-beta-D-glucopyranose-(1-4)-2-acetamido-2-deoxy-beta-D-glucopyranose

Chain E:  100%



4 Experimental information

Property	Value	Source
EM reconstruction method	SINGLE PARTICLE	Depositor
Imposed symmetry	POINT, C1	Depositor
Number of particles used	250712	Depositor
Resolution determination method	FSC 0.143 CUT-OFF	Depositor
CTF correction method	PHASE FLIPPING AND AMPLITUDE CORRECTION	Depositor
Microscope	FEI TITAN KRIOS	Depositor
Voltage (kV)	300	Depositor
Electron dose ($e^-/\text{\AA}^2$)	7.14	Depositor
Minimum defocus (nm)	Not provided	
Maximum defocus (nm)	Not provided	
Magnification	Not provided	
Image detector	FEI FALCON III (4k x 4k)	Depositor

5 Model quality [i](#)

5.1 Standard geometry [i](#)

Bond lengths and bond angles in the following residue types are not validated in this section: NAG, CLR

The Z score for a bond length (or angle) is the number of standard deviations the observed value is removed from the expected value. A bond length (or angle) with $|Z| > 5$ is considered an outlier worth inspection. RMSZ is the root-mean-square of all Z scores of the bond lengths (or angles).

Mol	Chain	Bond lengths		Bond angles	
		RMSZ	# Z >5	RMSZ	# Z >5
1	A	0.29	0/3184	0.54	1/4356 (0.0%)
2	B	0.29	0/3601	0.53	0/4886
3	C	0.31	0/1403	0.55	0/1914
4	D	0.29	0/1456	0.50	0/1972
All	All	0.29	0/9644	0.53	1/13128 (0.0%)

There are no bond length outliers.

All (1) bond angle outliers are listed below:

Mol	Chain	Res	Type	Atoms	Z	Observed(°)	Ideal(°)
1	A	435	LEU	CA-CB-CG	5.23	127.33	115.30

There are no chirality outliers.

There are no planarity outliers.

5.2 Too-close contacts [i](#)

In the following table, the Non-H and H(model) columns list the number of non-hydrogen atoms and hydrogen atoms in the chain respectively. The H(added) column lists the number of hydrogen atoms added and optimized by MolProbity. The Clashes column lists the number of clashes within the asymmetric unit, whereas Symm-Clashes lists symmetry-related clashes.

Mol	Chain	Non-H	H(model)	H(added)	Clashes	Symm-Clashes
1	A	3101	0	3214	25	0
2	B	3520	0	3500	27	0
3	C	1526	0	1403	14	0
4	D	1593	0	1413	12	0
5	E	28	0	25	0	0
6	A	112	0	184	2	0

Continued on next page...

Continued from previous page...

Mol	Chain	Non-H	H(model)	H(added)	Clashes	Symm-Clashes
6	B	28	0	46	1	0
7	B	42	0	39	0	0
All	All	9950	0	9824	77	0

The all-atom clashscore is defined as the number of clashes found per 1000 atoms (including hydrogen atoms). The all-atom clashscore for this structure is 4.

All (77) close contacts within the same asymmetric unit are listed below, sorted by their clash magnitude.

Atom-1	Atom-2	Interatomic distance (Å)	Clash overlap (Å)
2:B:361:ALA:HA	2:B:395:ASN:HD21	1.60	0.66
1:A:106:LEU:HD13	1:A:415:MET:HB3	1.80	0.62
2:B:600:GLN:HB2	2:B:620:GLU:HG3	1.82	0.62
1:A:141:ARG:HE	1:A:346:SER:HB2	1.68	0.59
2:B:430:TRP:HE1	2:B:463:THR:HG23	1.69	0.58
2:B:231:GLN:HE22	2:B:237:GLY:H	1.52	0.57
3:C:67:LEU:HD23	3:C:80:LEU:HD11	1.85	0.57
1:A:97:ILE:HD11	1:A:279:ILE:HA	1.88	0.56
1:A:390:SER:OG	1:A:391:LYS:N	2.39	0.55
1:A:164:CYS:N	2:B:210:CYS:SG	2.80	0.55
3:C:90:THR:HG22	3:C:116:VAL:H	1.73	0.54
2:B:326:VAL:HA	2:B:329:LYS:HB2	1.90	0.54
3:C:39:GLN:HB2	3:C:45:LEU:HD23	1.89	0.54
4:D:20:THR:HG22	4:D:80:THR:HG23	1.90	0.54
2:B:454:GLN:NE2	2:B:470:ASP:O	2.40	0.54
2:B:504:SER:OG	2:B:505:ALA:N	2.41	0.53
1:A:158:LYS:HG2	1:A:310:ALA:HB3	1.90	0.53
3:C:66:ARG:HG3	3:C:67:LEU:HD12	1.90	0.52
3:C:66:ARG:NH1	3:C:89:ASP:OD2	2.42	0.52
3:C:29:LEU:HD22	3:C:76:SER:HA	1.92	0.52
4:D:201:GLU:HG2	4:D:212:VAL:HG22	1.92	0.52
2:B:267:ASN:O	2:B:313:ARG:NH1	2.43	0.51
2:B:188:LEU:O	2:B:192:GLY:N	2.42	0.51
4:D:126:PRO:HD3	4:D:138:VAL:HG12	1.94	0.50
2:B:471:GLU:HG2	2:B:472:ILE:HG23	1.94	0.49
4:D:155:LYS:HB2	4:D:199:THR:HB	1.94	0.49
4:D:157:ASP:HB3	4:D:197:SER:HB3	1.94	0.49
4:D:11:LEU:HD13	4:D:19:VAL:HG21	1.96	0.48
1:A:244:VAL:HG11	1:A:449:VAL:HB	1.95	0.48
4:D:23:CYS:SG	4:D:24:UNK:N	2.86	0.48
1:A:135:ILE:HD12	1:A:465:ILE:HD12	1.96	0.48

Continued on next page...

Continued from previous page...

Atom-1	Atom-2	Interatomic distance (Å)	Clash overlap (Å)
4:D:130:GLN:HE22	4:D:137:SER:HB2	1.79	0.48
1:A:460:ILE:HG21	6:A:603:CLR:H193	1.96	0.48
1:A:207:ALA:HB2	1:A:330:PHE:HB3	1.96	0.47
1:A:239:ASP:HB3	1:A:242:ASN:HB2	1.96	0.47
2:B:568:ASN:HB2	2:B:616:LEU:HD22	1.96	0.47
1:A:416:ILE:HA	1:A:419:ARG:HG2	1.97	0.47
3:C:9:PRO:HG2	3:C:154:PRO:HG3	1.98	0.46
1:A:385:LEU:HB2	6:A:602:CLR:H213	1.98	0.46
2:B:451:ARG:HG2	2:B:519:LEU:HD13	1.96	0.46
1:A:72:PRO:HA	1:A:75:VAL:HG12	1.96	0.46
2:B:261:LEU:HD13	2:B:304:VAL:HG13	1.98	0.46
2:B:389:LEU:HD11	2:B:425:ALA:HB1	1.98	0.46
2:B:440:LEU:HD11	2:B:487:PRO:HG3	1.98	0.46
3:C:128:PRO:HG3	3:C:213:LYS:HB3	1.98	0.45
1:A:273:ASN:O	1:A:277:ALA:N	2.45	0.45
1:A:392:ASP:OD1	1:A:395:SER:N	2.50	0.45
2:B:286:SER:OG	2:B:287:LYS:N	2.49	0.45
4:D:12:VAL:HG22	4:D:113:LYS:HG3	1.98	0.45
2:B:349:ASP:OD1	2:B:437:GLN:NE2	2.49	0.45
1:A:92:CYS:HA	1:A:95:PHE:HB3	2.00	0.44
1:A:51:THR:OG1	1:A:52:LEU:N	2.50	0.44
2:B:492:ASP:N	2:B:492:ASP:OD1	2.50	0.44
2:B:251:LEU:HD21	2:B:259:LEU:HD13	1.99	0.44
1:A:284:ILE:HD12	1:A:284:ILE:HA	1.92	0.43
3:C:43:LYS:HB3	3:C:43:LYS:HE2	1.79	0.43
6:B:701:CLR:H162	6:B:701:CLR:H222	1.71	0.43
1:A:141:ARG:NH1	1:A:345:THR:OG1	2.52	0.43
2:B:544:PHE:HE1	2:B:578:LEU:HD23	1.84	0.43
4:D:204:HIS:CE1	4:D:206:THR:HG1	2.37	0.43
4:D:127:SER:OG	4:D:128:SER:N	2.53	0.42
1:A:430:LYS:HE3	1:A:430:LYS:HB3	1.82	0.42
3:C:40:PRO:HG2	3:C:43:LYS:HB2	2.01	0.42
2:B:325:THR:O	2:B:329:LYS:N	2.52	0.42
3:C:160:ASN:HD21	3:C:198:VAL:HA	1.85	0.42
3:C:71:LYS:HA	3:C:78:VAL:HA	2.02	0.42
2:B:250:TYR:O	2:B:253:SER:OG	2.30	0.42
1:A:97:ILE:HD12	1:A:283:PRO:HD3	2.03	0.41
1:A:177:LEU:HD21	2:B:196:MET:HB3	2.02	0.41
3:C:68:SER:HB3	3:C:81:LYS:HB2	2.03	0.41
3:C:213:LYS:HA	3:C:213:LYS:HD3	1.76	0.41
2:B:269:LYS:HB2	2:B:269:LYS:HE3	1.89	0.41

Continued on next page...

Continued from previous page...

Atom-1	Atom-2	Interatomic distance (Å)	Clash overlap (Å)
1:A:282:LEU:HA	1:A:285:VAL:HG12	2.03	0.40
1:A:300:LEU:HD22	1:A:304:GLN:HG2	2.02	0.40
2:B:218:TRP:HH2	2:B:305:ILE:HD11	1.86	0.40
2:B:565:VAL:HG22	2:B:623:LEU:HD13	2.03	0.40
4:D:191:GLU:OE1	4:D:194:ARG:NH2	2.52	0.40

There are no symmetry-related clashes.

5.3 Torsion angles [i](#)

5.3.1 Protein backbone [i](#)

In the following table, the Percentiles column shows the percent Ramachandran outliers of the chain as a percentile score with respect to all PDB entries followed by that with respect to all EM entries.

The Analysed column shows the number of residues for which the backbone conformation was analysed, and the total number of residues.

Mol	Chain	Analysed	Favoured	Allowed	Outliers	Percentiles	
1	A	397/515 (77%)	378 (95%)	18 (4%)	1 (0%)	41	71
2	B	449/631 (71%)	427 (95%)	22 (5%)	0	100	100
3	C	179/219 (82%)	170 (95%)	9 (5%)	0	100	100
4	D	184/219 (84%)	181 (98%)	3 (2%)	0	100	100
All	All	1209/1584 (76%)	1156 (96%)	52 (4%)	1 (0%)	54	81

All (1) Ramachandran outliers are listed below:

Mol	Chain	Res	Type
1	A	428	PRO

5.3.2 Protein sidechains [i](#)

In the following table, the Percentiles column shows the percent sidechain outliers of the chain as a percentile score with respect to all PDB entries followed by that with respect to all EM entries.

The Analysed column shows the number of residues for which the sidechain conformation was analysed, and the total number of residues.

Mol	Chain	Analysed	Rotameric	Outliers	Percentiles	
1	A	336/427 (79%)	334 (99%)	2 (1%)	86	92
2	B	378/514 (74%)	378 (100%)	0	100	100
3	C	162/162 (100%)	162 (100%)	0	100	100
4	D	165/166 (99%)	165 (100%)	0	100	100
All	All	1041/1269 (82%)	1039 (100%)	2 (0%)	93	97

All (2) residues with a non-rotameric sidechain are listed below:

Mol	Chain	Res	Type
1	A	134	TRP
1	A	454	THR

Sometimes sidechains can be flipped to improve hydrogen bonding and reduce clashes. All (10) such sidechains are listed below:

Mol	Chain	Res	Type
1	A	218	GLN
1	A	293	ASN
2	B	231	GLN
2	B	395	ASN
2	B	542	HIS
2	B	560	ASN
3	C	83	ASN
3	C	86	GLN
4	D	130	GLN
4	D	144	ASN

5.3.3 RNA [i](#)

There are no RNA molecules in this entry.

5.4 Non-standard residues in protein, DNA, RNA chains [i](#)

There are no non-standard protein/DNA/RNA residues in this entry.

5.5 Carbohydrates [i](#)

2 monosaccharides are modelled in this entry.

In the following table, the Counts columns list the number of bonds (or angles) for which Mogul statistics could be retrieved, the number of bonds (or angles) that are observed in the model and the number of bonds (or angles) that are defined in the Chemical Component Dictionary. The Link column lists molecule types, if any, to which the group is linked. The Z score for a bond length (or angle) is the number of standard deviations the observed value is removed from the expected value. A bond length (or angle) with $|Z| > 2$ is considered an outlier worth inspection. RMSZ is the root-mean-square of all Z scores of the bond lengths (or angles).

Mol	Type	Chain	Res	Link	Bond lengths			Bond angles		
					Counts	RMSZ	# Z > 2	Counts	RMSZ	# Z > 2
5	NAG	E	1	2,5	14,14,15	0.22	0	17,19,21	0.50	0
5	NAG	E	2	5	14,14,15	0.25	0	17,19,21	0.47	0

In the following table, the Chirals column lists the number of chiral outliers, the number of chiral centers analysed, the number of these observed in the model and the number defined in the Chemical Component Dictionary. Similar counts are reported in the Torsion and Rings columns. '-' means no outliers of that kind were identified.

Mol	Type	Chain	Res	Link	Chirals	Torsions	Rings
5	NAG	E	1	2,5	-	1/6/23/26	0/1/1/1
5	NAG	E	2	5	-	2/6/23/26	0/1/1/1

There are no bond length outliers.

There are no bond angle outliers.

There are no chirality outliers.

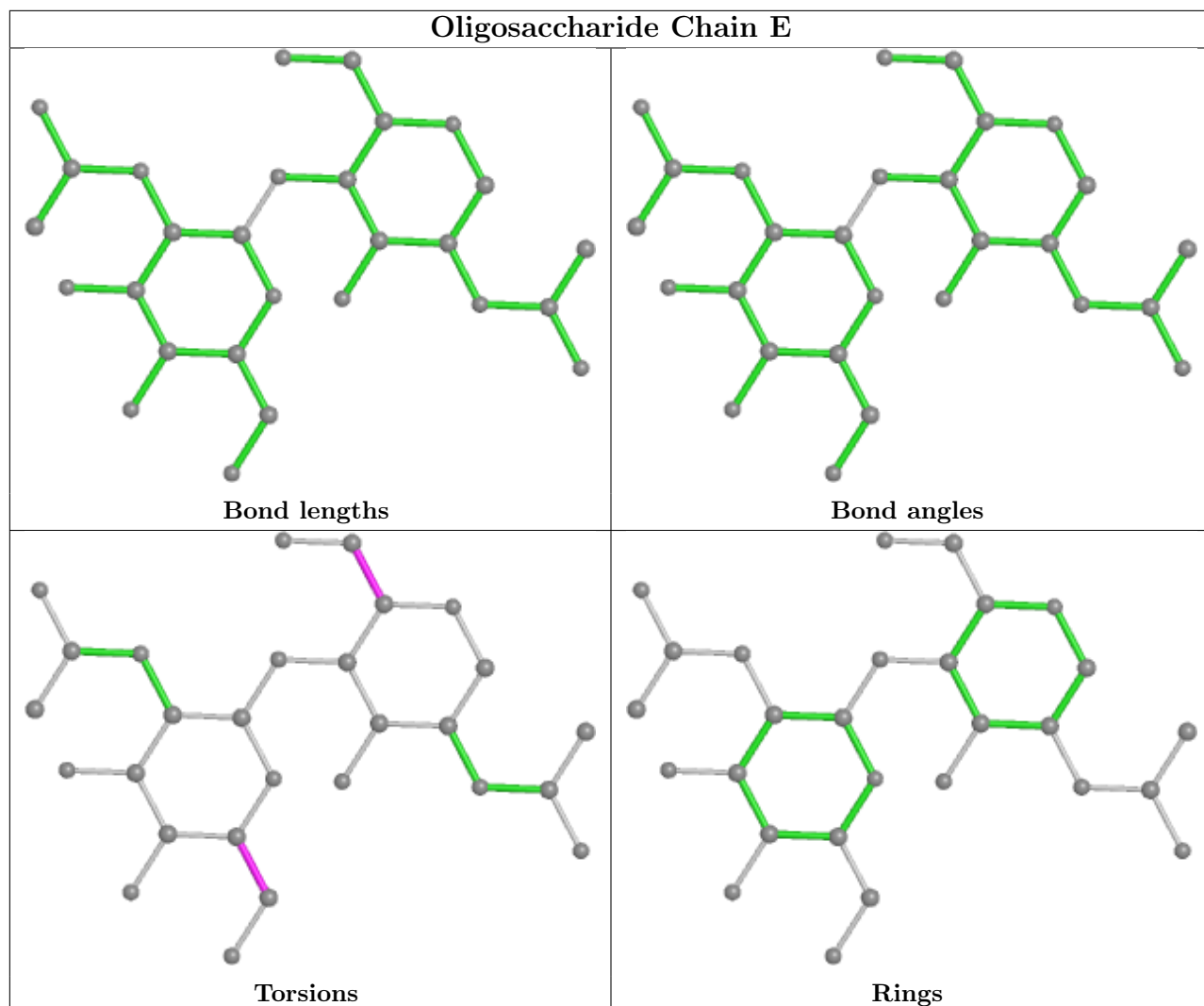
All (3) torsion outliers are listed below:

Mol	Chain	Res	Type	Atoms
5	E	2	NAG	O5-C5-C6-O6
5	E	2	NAG	C4-C5-C6-O6
5	E	1	NAG	O5-C5-C6-O6

There are no ring outliers.

No monomer is involved in short contacts.

The following is a two-dimensional graphical depiction of Mogul quality analysis of bond lengths, bond angles, torsion angles, and ring geometry for oligosaccharide.



5.6 Ligand geometry [i](#)

8 ligands are modelled in this entry.

In the following table, the Counts columns list the number of bonds (or angles) for which Mogul statistics could be retrieved, the number of bonds (or angles) that are observed in the model and the number of bonds (or angles) that are defined in the Chemical Component Dictionary. The Link column lists molecule types, if any, to which the group is linked. The Z score for a bond length (or angle) is the number of standard deviations the observed value is removed from the expected value. A bond length (or angle) with $|Z| > 2$ is considered an outlier worth inspection. RMSZ is the root-mean-square of all Z scores of the bond lengths (or angles).

Mol	Type	Chain	Res	Link	Bond lengths			Bond angles		
					Counts	RMSZ	$\# Z > 2$	Counts	RMSZ	$\# Z > 2$
6	CLR	A	601	-	31,31,31	0.34	0	48,48,48	0.47	0
6	CLR	A	602	-	31,31,31	0.29	0	48,48,48	0.48	0
6	CLR	B	701	-	31,31,31	0.33	0	48,48,48	0.48	0
6	CLR	A	604	-	31,31,31	0.32	0	48,48,48	0.46	0

Mol	Type	Chain	Res	Link	Bond lengths			Bond angles		
					Counts	RMSZ	# Z > 2	Counts	RMSZ	# Z > 2
7	NAG	B	705	2	14,14,15	0.36	0	17,19,21	0.43	0
7	NAG	B	704	2	14,14,15	1.46	2 (14%)	17,19,21	1.36	1 (5%)
6	CLR	A	603	-	31,31,31	0.33	0	48,48,48	0.53	0
7	NAG	B	706	2	14,14,15	0.48	0	17,19,21	0.63	0

In the following table, the Chirals column lists the number of chiral outliers, the number of chiral centers analysed, the number of these observed in the model and the number defined in the Chemical Component Dictionary. Similar counts are reported in the Torsion and Rings columns. '-' means no outliers of that kind were identified.

Mol	Type	Chain	Res	Link	Chirals	Torsions	Rings
6	CLR	A	601	-	-	0/10/68/68	0/4/4/4
6	CLR	A	602	-	-	4/10/68/68	0/4/4/4
6	CLR	B	701	-	-	4/10/68/68	0/4/4/4
6	CLR	A	604	-	-	4/10/68/68	0/4/4/4
7	NAG	B	705	2	-	2/6/23/26	0/1/1/1
7	NAG	B	704	2	-	2/6/23/26	0/1/1/1
6	CLR	A	603	-	-	0/10/68/68	0/4/4/4
7	NAG	B	706	2	-	4/6/23/26	0/1/1/1

All (2) bond length outliers are listed below:

Mol	Chain	Res	Type	Atoms	Z	Observed(Å)	Ideal(Å)
7	B	704	NAG	O5-C1	4.61	1.51	1.43
7	B	704	NAG	C1-C2	2.56	1.56	1.52

All (1) bond angle outliers are listed below:

Mol	Chain	Res	Type	Atoms	Z	Observed(°)	Ideal(°)
7	B	704	NAG	C1-O5-C5	5.25	119.31	112.19

There are no chirality outliers.

All (20) torsion outliers are listed below:

Mol	Chain	Res	Type	Atoms
7	B	706	NAG	O5-C5-C6-O6
7	B	706	NAG	C4-C5-C6-O6
7	B	705	NAG	C4-C5-C6-O6
7	B	704	NAG	C4-C5-C6-O6
7	B	706	NAG	C8-C7-N2-C2

Continued on next page...

Continued from previous page...

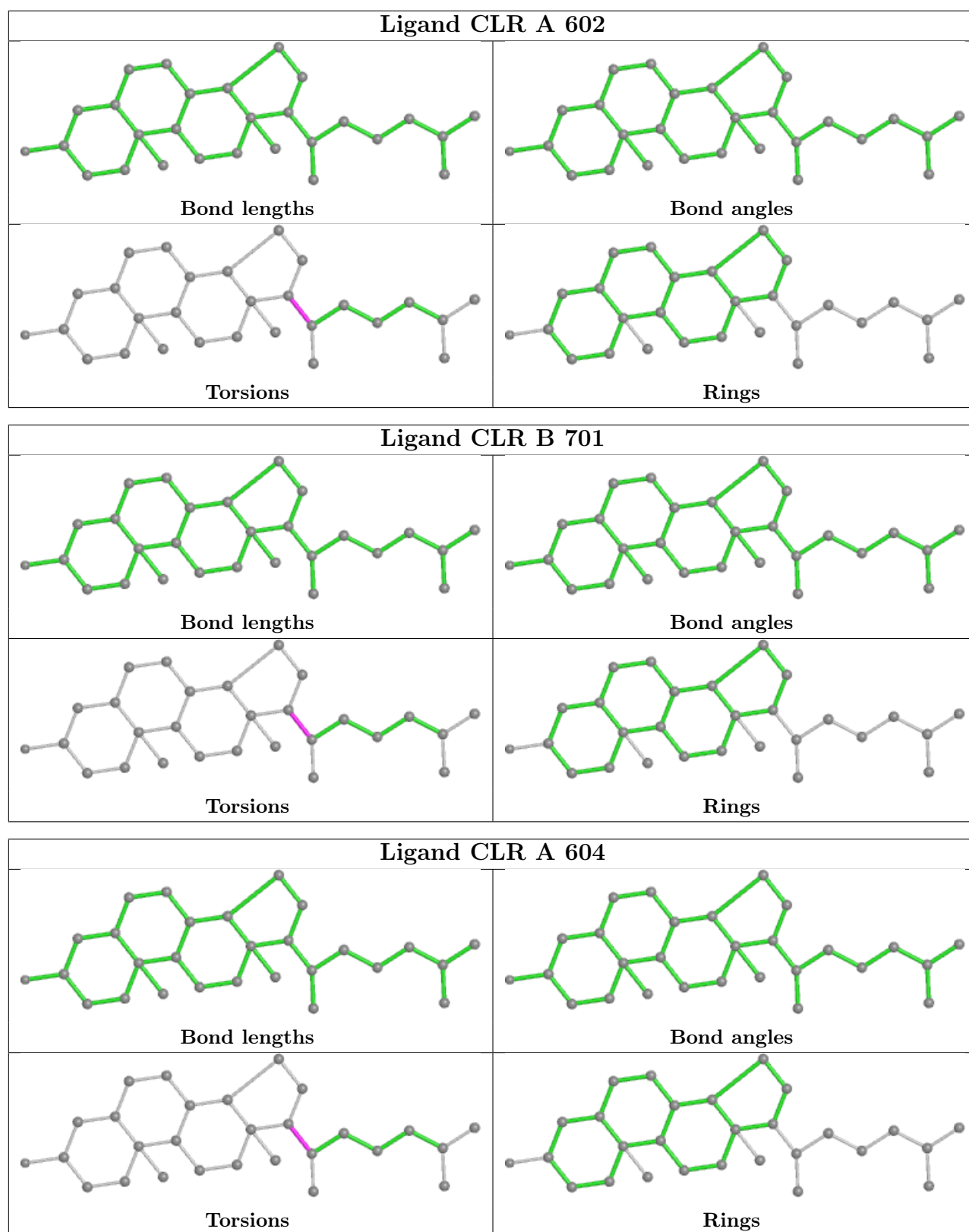
Mol	Chain	Res	Type	Atoms
7	B	706	NAG	O7-C7-N2-C2
7	B	705	NAG	O5-C5-C6-O6
6	A	602	CLR	C13-C17-C20-C22
7	B	704	NAG	O5-C5-C6-O6
6	A	602	CLR	C16-C17-C20-C21
6	A	602	CLR	C13-C17-C20-C21
6	A	602	CLR	C16-C17-C20-C22
6	A	604	CLR	C16-C17-C20-C22
6	A	604	CLR	C13-C17-C20-C22
6	B	701	CLR	C16-C17-C20-C22
6	A	604	CLR	C13-C17-C20-C21
6	B	701	CLR	C13-C17-C20-C22
6	A	604	CLR	C16-C17-C20-C21
6	B	701	CLR	C13-C17-C20-C21
6	B	701	CLR	C16-C17-C20-C21

There are no ring outliers.

3 monomers are involved in 3 short contacts:

Mol	Chain	Res	Type	Clashes	Symm-Clashes
6	A	602	CLR	1	0
6	B	701	CLR	1	0
6	A	603	CLR	1	0

The following is a two-dimensional graphical depiction of Mogul quality analysis of bond lengths, bond angles, torsion angles, and ring geometry for all instances of the Ligand of Interest. In addition, ligands with molecular weight > 250 and outliers as shown on the validation Tables will also be included. For torsion angles, if less than 5% of the Mogul distribution of torsion angles is within 10 degrees of the torsion angle in question, then that torsion angle is considered an outlier. Any bond that is central to one or more torsion angles identified as an outlier by Mogul will be highlighted in the graph. For rings, the root-mean-square deviation (RMSD) between the ring in question and similar rings identified by Mogul is calculated over all ring torsion angles. If the average RMSD is greater than 60 degrees and the minimal RMSD between the ring in question and any Mogul-identified rings is also greater than 60 degrees, then that ring is considered an outlier. The outliers are highlighted in purple. The color gray indicates Mogul did not find sufficient equivalents in the CSD to analyse the geometry.



5.7 Other polymers [\(i\)](#)

There are no such residues in this entry.

5.8 Polymer linkage issues

There are no chain breaks in this entry.