



Full wwPDB X-ray Structure Validation Report ⓘ

Jan 3, 2024 – 04:28 pm GMT

PDB ID : 5JOV
Title : Bacteroides ovatus Xyloglucan PUL GH31 with bound 5FIdoF
Authors : Thompson, A.J.; Hemsworth, G.R.; Stepper, J.; Sobala, L.F.; Coyle, T.; Larsbrink, J.; Spadiut, O.; Stubbs, K.A.; Brumer, H.; Davies, G.J.
Deposited on : 2016-05-03
Resolution : 1.50 Å(reported)

This is a Full wwPDB X-ray Structure Validation Report for a publicly released PDB entry.

We welcome your comments at validation@mail.wwpdb.org

A user guide is available at

<https://www.wwpdb.org/validation/2017/XrayValidationReportHelp>

with specific help available everywhere you see the ⓘ symbol.

The types of validation reports are described at

<http://www.wwpdb.org/validation/2017/FAQs#types>.

The following versions of software and data (see [references ⓘ](#)) were used in the production of this report:

MolProbity : 4.02b-467
Mogul : 1.8.4, CSD as541be (2020)
Xtrriage (Phenix) : 1.13
EDS : 2.36
Percentile statistics : 20191225.v01 (using entries in the PDB archive December 25th 2019)
Refmac : 5.8.0158
CCP4 : 7.0.044 (Gargrove)
Ideal geometry (proteins) : Engh & Huber (2001)
Ideal geometry (DNA, RNA) : Parkinson et al. (1996)
Validation Pipeline (wwPDB-VP) : 2.36

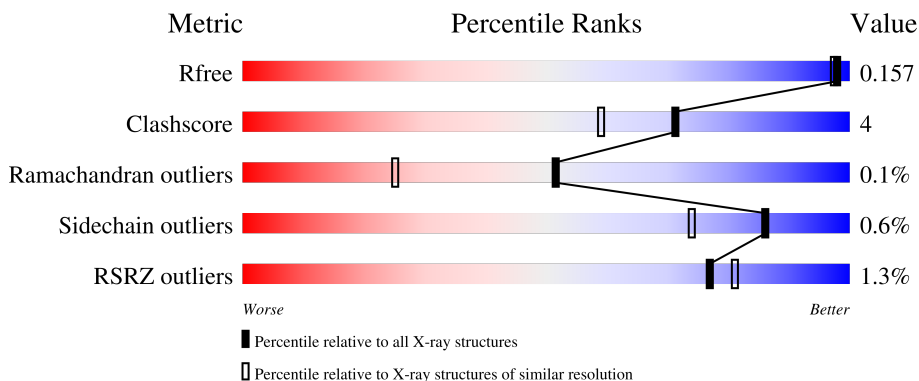
1 Overall quality at a glance

The following experimental techniques were used to determine the structure:

X-RAY DIFFRACTION


The reported resolution of this entry is 1.50 Å.

Percentile scores (ranging between 0-100) for global validation metrics of the entry are shown in the following graphic. The table shows the number of entries on which the scores are based.



Metric	Whole archive (#Entries)	Similar resolution (#Entries, resolution range(Å))
R_{free}	130704	2936 (1.50-1.50)
Clashscore	141614	3144 (1.50-1.50)
Ramachandran outliers	138981	3066 (1.50-1.50)
Sidechain outliers	138945	3064 (1.50-1.50)
RSRZ outliers	127900	2884 (1.50-1.50)

The table below summarises the geometric issues observed across the polymeric chains and their fit to the electron density. The red, orange, yellow and green segments of the lower bar indicate the fraction of residues that contain outliers for ≥ 3 , 2, 1 and 0 types of geometric quality criteria respectively. A grey segment represents the fraction of residues that are not modelled. The numeric value for each fraction is indicated below the corresponding segment, with a dot representing fractions $\leq 5\%$. The upper red bar (where present) indicates the fraction of residues that have poor fit to the electron density. The numeric value is given above the bar.

Mol	Chain	Length	Quality of chain
1	A	955	

2 Entry composition [i](#)

There are 6 unique types of molecules in this entry. The entry contains 9380 atoms, of which 0 are hydrogens and 0 are deuteriums.

In the tables below, the ZeroOcc column contains the number of atoms modelled with zero occupancy, the AltConf column contains the number of residues with at least one atom in alternate conformation and the Trace column contains the number of residues modelled with at most 2 atoms.

- Molecule 1 is a protein called Alpha-xylosidase BoGH31A.

Mol	Chain	Residues	Atoms					ZeroOcc	AltConf	Trace
			Total	C	N	O	S			
1	A	949	7858	5066	1299	1450	43	0	36	0

There are 22 discrepancies between the modelled and reference sequences:

Chain	Residue	Modelled	Actual	Comment	Reference
A	0	MET	-	initiating methionine	UNP A7LXT0
A	1	GLY	-	expression tag	UNP A7LXT0
A	2	SER	-	expression tag	UNP A7LXT0
A	3	SER	-	expression tag	UNP A7LXT0
A	4	HIS	-	expression tag	UNP A7LXT0
A	5	HIS	-	expression tag	UNP A7LXT0
A	6	HIS	-	expression tag	UNP A7LXT0
A	7	HIS	-	expression tag	UNP A7LXT0
A	8	HIS	-	expression tag	UNP A7LXT0
A	9	HIS	-	expression tag	UNP A7LXT0
A	10	SER	-	expression tag	UNP A7LXT0
A	11	SER	-	expression tag	UNP A7LXT0
A	12	GLY	-	expression tag	UNP A7LXT0
A	13	LEU	-	expression tag	UNP A7LXT0
A	14	GLU	-	expression tag	UNP A7LXT0
A	15	VAL	-	expression tag	UNP A7LXT0
A	16	LEU	-	expression tag	UNP A7LXT0
A	17	PHE	-	expression tag	UNP A7LXT0
A	18	GLN	-	expression tag	UNP A7LXT0
A	19	GLY	-	expression tag	UNP A7LXT0
A	20	PRO	-	expression tag	UNP A7LXT0
A	21	ALA	-	expression tag	UNP A7LXT0

- Molecule 2 is NICKEL (II) ION (three-letter code: NI) (formula: Ni).

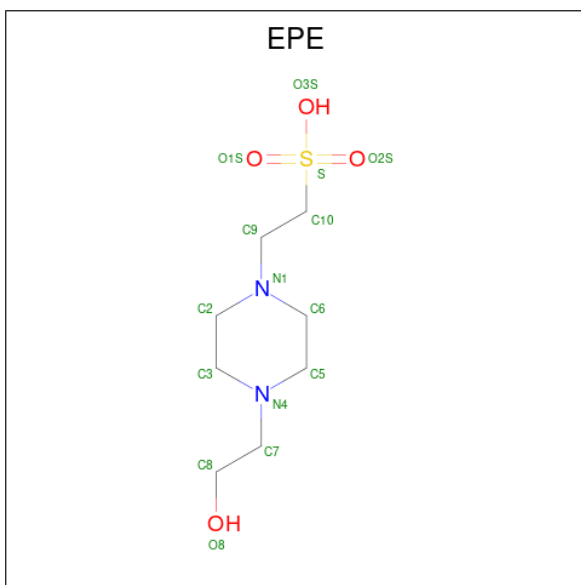
Mol	Chain	Residues	Atoms	ZeroOcc	AltConf
2	A	1	Total Ni 1 1	0	0

- Molecule 3 is 1,2-ETHANEDIOL (three-letter code: EDO) (formula: C₂H₆O₂).



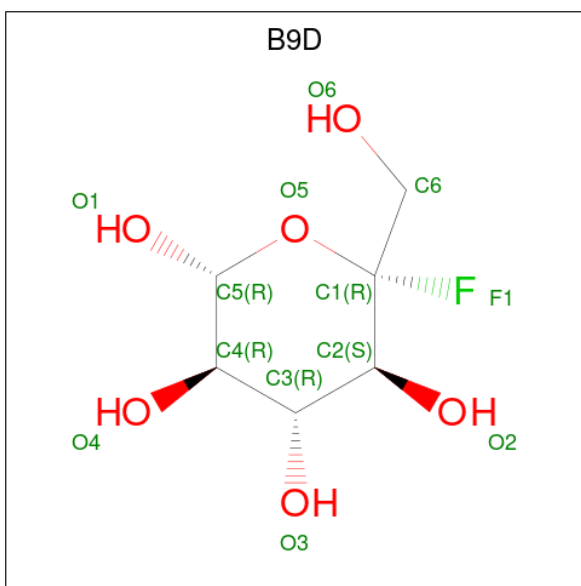
Mol	Chain	Residues	Atoms	ZeroOcc	AltConf
3	A	1	Total C O 4 2 2	0	0
3	A	1	Total C O 4 2 2	0	0
3	A	1	Total C O 4 2 2	0	0
3	A	1	Total C O 4 2 2	0	0
3	A	1	Total C O 4 2 2	0	0

- Molecule 4 is 4-(2-HYDROXYETHYL)-1-PIPERAZINE ETHANESULFONIC ACID (three-letter code: EPE) (formula: C₈H₁₈N₂O₄S).



Mol	Chain	Residues	Atoms					ZeroOcc	AltConf
			Total	C	N	O	S		
4	A	1	15	8	2	4	1	0	0

- Molecule 5 is 5-fluoro-alpha-L-idopyranose (three-letter code: B9D) (formula: C₆H₁₁FO₆).



Mol	Chain	Residues	Atoms				ZeroOcc	AltConf
			Total	C	F	O		
5	A	1	12	6	1	5	0	0

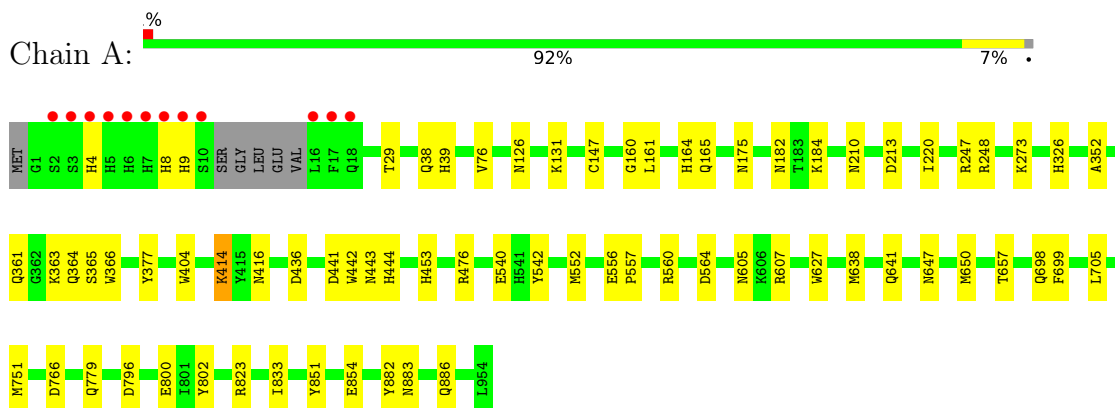
- Molecule 6 is water.

Mol	Chain	Residues	Atoms		ZeroOcc	AltConf
6	A	1466	Total 1474	O 1474	0	8

3 Residue-property plots [i](#)

These plots are drawn for all protein, RNA, DNA and oligosaccharide chains in the entry. The first graphic for a chain summarises the proportions of the various outlier classes displayed in the second graphic. The second graphic shows the sequence view annotated by issues in geometry and electron density. Residues are color-coded according to the number of geometric quality criteria for which they contain at least one outlier: green = 0, yellow = 1, orange = 2 and red = 3 or more. A red dot above a residue indicates a poor fit to the electron density ($RSRZ > 2$). Stretches of 2 or more consecutive residues without any outlier are shown as a green connector. Residues present in the sample, but not in the model, are shown in grey.

- Molecule 1: Alpha-xylosidase BoGH31A



4 Data and refinement statistics

Property	Value	Source
Space group	P 21 21 21	Depositor
Cell constants a, b, c, α , β , γ	76.91Å 108.45Å 144.85Å 90.00° 90.00° 90.00°	Depositor
Resolution (Å)	48.28 – 1.50 47.42 – 1.50	Depositor EDS
% Data completeness (in resolution range)	99.7 (48.28-1.50) 99.7 (47.42-1.50)	Depositor EDS
R_{merge}	0.09	Depositor
R_{sym}	(Not available)	Depositor
$\langle I/\sigma(I) \rangle$ ¹	0.98 (at 1.50Å)	Xtrriage
Refinement program	REFMAC 5.8.0131	Depositor
R, R_{free}	0.107 , 0.147 0.125 , 0.157	Depositor DCC
R_{free} test set	9749 reflections (5.04%)	wwPDB-VP
Wilson B-factor (Å ²)	15.6	Xtrriage
Anisotropy	0.573	Xtrriage
Bulk solvent k_{sol} (e/Å ³), B_{sol} (Å ²)	0.30 , 46.1	EDS
L-test for twinning ²	$\langle L \rangle = 0.47$, $\langle L^2 \rangle = 0.30$	Xtrriage
Estimated twinning fraction	No twinning to report.	Xtrriage
F_o, F_c correlation	0.98	EDS
Total number of atoms	9380	wwPDB-VP
Average B, all atoms (Å ²)	21.0	wwPDB-VP

Xtrriage's analysis on translational NCS is as follows: *The largest off-origin peak in the Patterson function is 3.20% of the height of the origin peak. No significant pseudotranslation is detected.*

¹Intensities estimated from amplitudes.

²Theoretical values of $\langle |L| \rangle$, $\langle L^2 \rangle$ for acentric reflections are 0.5, 0.333 respectively for untwinned datasets, and 0.375, 0.2 for perfectly twinned datasets.

5 Model quality [i](#)

5.1 Standard geometry [i](#)

Bond lengths and bond angles in the following residue types are not validated in this section: EPE, B9D, NI, EDO

The Z score for a bond length (or angle) is the number of standard deviations the observed value is removed from the expected value. A bond length (or angle) with $|Z| > 5$ is considered an outlier worth inspection. RMSZ is the root-mean-square of all Z scores of the bond lengths (or angles).

Mol	Chain	Bond lengths		Bond angles	
		RMSZ	# Z >5	RMSZ	# Z >5
1	A	0.71	0/8195	0.80	12/11104 (0.1%)

There are no bond length outliers.

All (12) bond angle outliers are listed below:

Mol	Chain	Res	Type	Atoms	Z	Observed(°)	Ideal(°)
1	A	248	ARG	NE-CZ-NH1	9.38	124.99	120.30
1	A	248	ARG	NE-CZ-NH2	-8.07	116.27	120.30
1	A	766	ASP	CB-CG-OD1	-7.82	111.26	118.30
1	A	213[A]	ASP	CB-CG-OD1	7.15	124.74	118.30
1	A	213[B]	ASP	CB-CG-OD1	7.15	124.74	118.30
1	A	213[A]	ASP	CB-CG-OD2	-6.99	112.01	118.30
1	A	213[B]	ASP	CB-CG-OD2	-6.99	112.01	118.30
1	A	766	ASP	CB-CG-OD2	6.90	124.51	118.30
1	A	699	PHE	CB-CG-CD1	5.94	124.96	120.80
1	A	247	ARG	NE-CZ-NH2	-5.84	117.38	120.30
1	A	564	ASP	CB-CG-OD1	5.76	123.48	118.30
1	A	796	ASP	CB-CG-OD1	5.40	123.16	118.30

There are no chirality outliers.

There are no planarity outliers.

5.2 Too-close contacts [i](#)

In the following table, the Non-H and H(model) columns list the number of non-hydrogen atoms and hydrogen atoms in the chain respectively. The H(added) column lists the number of hydrogen atoms added and optimized by MolProbity. The Clashes column lists the number of clashes within the asymmetric unit, whereas Symm-Clashes lists symmetry-related clashes.

Mol	Chain	Non-H	H(model)	H(added)	Clashes	Symm-Clashes
1	A	7858	0	7554	53	0
2	A	1	0	0	0	0
3	A	20	0	28	1	0
4	A	15	0	18	1	0
5	A	12	0	8	0	0
6	A	1474	0	0	23	1
All	All	9380	0	7608	55	1

The all-atom clashscore is defined as the number of clashes found per 1000 atoms (including hydrogen atoms). The all-atom clashscore for this structure is 4.

All (55) close contacts within the same asymmetric unit are listed below, sorted by their clash magnitude.

Atom-1	Atom-2	Interatomic distance (Å)	Clash overlap (Å)
1:A:147[B]:CYS:SG	6:A:1102:HOH:O	1.93	1.21
1:A:800[A]:GLU:OE2	1:A:823[A]:ARG:HD3	1.54	1.07
1:A:605[B]:ASN:ND2	6:A:1101:HOH:O	1.93	1.01
1:A:273[A]:LYS:HG3	6:A:2071:HOH:O	1.68	0.92
1:A:800[A]:GLU:CD	1:A:823[A]:ARG:HD3	1.93	0.86
1:A:540:GLU:HG2	6:A:2126:HOH:O	1.84	0.77
1:A:779:GLN:HE22	1:A:802:TYR:H	1.34	0.76
1:A:751[B]:MET:HE2	6:A:1542:HOH:O	1.84	0.75
1:A:364:GLN:HE21	1:A:366:TRP:HE1	1.32	0.75
1:A:476[B]:ARG:NH2	6:A:1103:HOH:O	2.14	0.73
1:A:9:HIS:H	1:A:38:GLN:HE22	1.37	0.72
1:A:365[B]:SER:OG	6:A:1102:HOH:O	2.13	0.67
1:A:638[B]:MET:CE	6:A:1331:HOH:O	2.44	0.65
1:A:444:HIS:HE1	1:A:542:TYR:OH	1.81	0.63
1:A:175:ASN:HD21	1:A:361:GLN:HE22	1.49	0.60
1:A:800[A]:GLU:OE2	1:A:823[A]:ARG:CD	2.39	0.58
1:A:39[B]:HIS:CE1	6:A:1118:HOH:O	2.57	0.57
1:A:453:HIS:HE1	6:A:1516:HOH:O	1.88	0.56
1:A:638[B]:MET:HE1	6:A:1331:HOH:O	2.05	0.56
4:A:1007:EPE:H91	6:A:1339:HOH:O	2.04	0.56
1:A:160:GLY:H	1:A:647:ASN:HD22	1.54	0.55
1:A:326:HIS:HD2	6:A:2231:HOH:O	1.89	0.55
1:A:175:ASN:ND2	1:A:210:ASN:H	2.04	0.55
1:A:29:THR:HG23	6:A:1689:HOH:O	2.08	0.54
1:A:161:LEU:O	1:A:164:HIS:HE1	1.90	0.54
1:A:560[A]:ARG:NH1	6:A:1108:HOH:O	2.41	0.53
1:A:4:HIS:O	1:A:8:HIS:HD2	1.92	0.52
1:A:607:ARG:HA	1:A:882:TYR:CE2	2.46	0.51

Continued on next page...

Continued from previous page...

Atom-1	Atom-2	Interatomic distance (Å)	Clash overlap (Å)
1:A:540:GLU:CG	6:A:2126:HOH:O	2.50	0.50
1:A:220:ILE:HD11	1:A:352:ALA:HB3	1.94	0.50
1:A:605[B]:ASN:ND2	1:A:883:ASN:OD1	2.40	0.50
1:A:560[B]:ARG:NH2	6:A:1113:HOH:O	2.45	0.49
1:A:442:TRP:CE3	1:A:443:ASN:HB2	2.48	0.49
1:A:414[B]:LYS:NZ	1:A:416:ASN:OD1	2.46	0.48
1:A:823[A]:ARG:NH1	6:A:1115:HOH:O	2.46	0.48
3:A:1003:EDO:H22	6:A:2151:HOH:O	2.13	0.48
1:A:886:GLN:NE2	6:A:1116:HOH:O	2.47	0.47
1:A:364:GLN:NE2	1:A:366:TRP:HE1	2.06	0.47
1:A:638[B]:MET:HE3	6:A:1331:HOH:O	2.09	0.47
1:A:657:THR:HB	1:A:705:LEU:HB2	1.99	0.45
1:A:175:ASN:HD22	1:A:210:ASN:H	1.66	0.44
1:A:441:ASP:O	1:A:444:HIS:HD2	2.00	0.44
1:A:126:ASN:HD21	1:A:363:LYS:NZ	2.16	0.44
1:A:164:HIS:HD2	1:A:184:LYS:NZ	2.15	0.43
1:A:164:HIS:HD2	1:A:184:LYS:HZ2	1.67	0.42
1:A:560[B]:ARG:HD2	6:A:2013:HOH:O	2.17	0.42
1:A:698:GLN:HB3	1:A:833:ILE:HB	2.02	0.42
1:A:273[A]:LYS:CG	6:A:2071:HOH:O	2.47	0.42
1:A:404:TRP:CD2	1:A:476[B]:ARG:HG3	2.54	0.42
1:A:414[B]:LYS:HD2	1:A:443:ASN:HB3	2.01	0.41
1:A:556:GLU:N	1:A:557:PRO:HA	2.36	0.41
1:A:165:GLN:HE22	1:A:641:GLN:HE22	1.69	0.40
1:A:76:VAL:HG21	1:A:377:TYR:CZ	2.57	0.40
1:A:851:TYR:CZ	1:A:854:GLU:HG3	2.56	0.40

All (1) symmetry-related close contacts are listed below. The label for Atom-2 includes the symmetry operator and encoded unit-cell translations to be applied.

Atom-1	Atom-2	Interatomic distance (Å)	Clash overlap (Å)
6:A:1758:HOH:O	6:A:2220:HOH:O[4_475]	2.14	0.06

5.3 Torsion angles [i](#)

5.3.1 Protein backbone [i](#)

In the following table, the Percentiles column shows the percent Ramachandran outliers of the chain as a percentile score with respect to all X-ray entries followed by that with respect to entries of similar resolution.

The Analysed column shows the number of residues for which the backbone conformation was analysed, and the total number of residues.

Mol	Chain	Analysed	Favoured	Allowed	Outliers	Percentiles
1	A	981/955 (103%)	963 (98%)	17 (2%)	1 (0%)	51 25

All (1) Ramachandran outliers are listed below:

Mol	Chain	Res	Type
1	A	182	ASN

5.3.2 Protein sidechains [i](#)

In the following table, the Percentiles column shows the percent sidechain outliers of the chain as a percentile score with respect to all X-ray entries followed by that with respect to entries of similar resolution.

The Analysed column shows the number of residues for which the sidechain conformation was analysed, and the total number of residues.

Mol	Chain	Analysed	Rotameric	Outliers	Percentiles
1	A	828/813 (102%)	821 (99%)	7 (1%)	81 66

All (7) residues with a non-rotameric sidechain are listed below:

Mol	Chain	Res	Type
1	A	131	LYS
1	A	414[A]	LYS
1	A	414[B]	LYS
1	A	436	ASP
1	A	627	TRP
1	A	650[A]	MET
1	A	650[B]	MET

Sometimes sidechains can be flipped to improve hydrogen bonding and reduce clashes. All (18) such sidechains are listed below:

Mol	Chain	Res	Type
1	A	8	HIS
1	A	38	GLN
1	A	72	GLN
1	A	79	GLN
1	A	126	ASN
1	A	148	GLN

Continued on next page...

Continued from previous page...

Mol	Chain	Res	Type
1	A	164	HIS
1	A	175	ASN
1	A	304	ASN
1	A	326	HIS
1	A	364	GLN
1	A	444	HIS
1	A	453	HIS
1	A	498	ASN
1	A	591	ASN
1	A	641	GLN
1	A	647	ASN
1	A	779	GLN

5.3.3 RNA [i](#)

There are no RNA molecules in this entry.

5.4 Non-standard residues in protein, DNA, RNA chains [i](#)

There are no non-standard protein/DNA/RNA residues in this entry.

5.5 Carbohydrates [i](#)

There are no monosaccharides in this entry.

5.6 Ligand geometry [i](#)

Of 8 ligands modelled in this entry, 1 is monoatomic - leaving 7 for Mogul analysis.

In the following table, the Counts columns list the number of bonds (or angles) for which Mogul statistics could be retrieved, the number of bonds (or angles) that are observed in the model and the number of bonds (or angles) that are defined in the Chemical Component Dictionary. The Link column lists molecule types, if any, to which the group is linked. The Z score for a bond length (or angle) is the number of standard deviations the observed value is removed from the expected value. A bond length (or angle) with $|Z| > 2$ is considered an outlier worth inspection. RMSZ is the root-mean-square of all Z scores of the bond lengths (or angles).

Mol	Type	Chain	Res	Link	Bond lengths			Bond angles		
					Counts	RMSZ	# Z > 2	Counts	RMSZ	# Z > 2
4	EPE	A	1007	-	15,15,15	1.48	1 (6%)	18,20,20	1.25	2 (11%)

Mol	Type	Chain	Res	Link	Bond lengths			Bond angles		
					Counts	RMSZ	# Z > 2	Counts	RMSZ	# Z > 2
3	EDO	A	1003	-	3,3,3	2.00	1 (33%)	2,2,2	0.23	0
3	EDO	A	1005	-	3,3,3	0.28	0	2,2,2	0.03	0
3	EDO	A	1006	-	3,3,3	0.75	0	2,2,2	0.72	0
3	EDO	A	1002	-	3,3,3	0.57	0	2,2,2	0.45	0
5	B9D	A	1008	1	9,12,13	1.31	1 (11%)	14,18,20	1.76	4 (28%)
3	EDO	A	1004	-	3,3,3	0.68	0	2,2,2	0.32	0

In the following table, the Chirals column lists the number of chiral outliers, the number of chiral centers analysed, the number of these observed in the model and the number defined in the Chemical Component Dictionary. Similar counts are reported in the Torsion and Rings columns. '-' means no outliers of that kind were identified.

Mol	Type	Chain	Res	Link	Chirals	Torsions	Rings
4	EPE	A	1007	-	-	6/9/19/19	0/1/1/1
3	EDO	A	1003	-	-	1/1/1/1	-
3	EDO	A	1005	-	-	1/1/1/1	-
3	EDO	A	1006	-	-	0/1/1/1	-
3	EDO	A	1002	-	-	0/1/1/1	-
5	B9D	A	1008	1	-	0/2/23/26	0/1/1/1
3	EDO	A	1004	-	-	1/1/1/1	-

All (3) bond length outliers are listed below:

Mol	Chain	Res	Type	Atoms	Z	Observed(Å)	Ideal(Å)
4	A	1007	EPE	C10-S	-4.63	1.70	1.77
3	A	1003	EDO	O2-C2	-2.94	1.26	1.42
5	A	1008	B9D	O5-C5	-2.63	1.40	1.43

All (6) bond angle outliers are listed below:

Mol	Chain	Res	Type	Atoms	Z	Observed(°)	Ideal(°)
5	A	1008	B9D	C4-C3-C2	-3.68	106.36	110.48
4	A	1007	EPE	O2S-S-C10	-3.31	102.93	106.92
4	A	1007	EPE	O3S-S-C10	2.77	110.25	105.77
5	A	1008	B9D	C6-C1-C2	2.56	116.81	112.02
5	A	1008	B9D	C5-C4-C3	2.44	112.66	109.67
5	A	1008	B9D	C5-O5-C1	2.38	118.24	113.73

There are no chirality outliers.

All (9) torsion outliers are listed below:

Mol	Chain	Res	Type	Atoms
4	A	1007	EPE	C10-C9-N1-C6
4	A	1007	EPE	N4-C7-C8-O8
4	A	1007	EPE	C9-C10-S-O1S
4	A	1007	EPE	C9-C10-S-O3S
3	A	1003	EDO	O1-C1-C2-O2
4	A	1007	EPE	C10-C9-N1-C2
4	A	1007	EPE	C9-C10-S-O2S
3	A	1004	EDO	O1-C1-C2-O2
3	A	1005	EDO	O1-C1-C2-O2

There are no ring outliers.

2 monomers are involved in 2 short contacts:

Mol	Chain	Res	Type	Clashes	Symm-Clashes
4	A	1007	EPE	1	0
3	A	1003	EDO	1	0

5.7 Other polymers [i](#)

There are no such residues in this entry.

5.8 Polymer linkage issues [i](#)

There are no chain breaks in this entry.

6 Fit of model and data [i](#)

6.1 Protein, DNA and RNA chains [i](#)

In the following table, the column labelled ‘#RSRZ> 2’ contains the number (and percentage) of RSRZ outliers, followed by percent RSRZ outliers for the chain as percentile scores relative to all X-ray entries and entries of similar resolution. The OWAB column contains the minimum, median, 95th percentile and maximum values of the occupancy-weighted average B-factor per residue. The column labelled ‘Q< 0.9’ lists the number of (and percentage) of residues with an average occupancy less than 0.9.

Mol	Chain	Analysed	<RSRZ>	#RSRZ>2	OWAB(Å ²)	Q<0.9
1	A	949/955 (99%)	-0.61	12 (1%) 77 81	11, 17, 31, 61	0

All (12) RSRZ outliers are listed below:

Mol	Chain	Res	Type	RSRZ
1	A	16	LEU	7.3
1	A	5	HIS	4.1
1	A	18	GLN	3.5
1	A	8	HIS	3.3
1	A	9	HIS	3.1
1	A	17	PHE	3.0
1	A	3[A]	SER	2.8
1	A	2	SER	2.8
1	A	7	HIS	2.8
1	A	4	HIS	2.3
1	A	10	SER	2.2
1	A	6	HIS	2.0

6.2 Non-standard residues in protein, DNA, RNA chains [i](#)

There are no non-standard protein/DNA/RNA residues in this entry.

6.3 Carbohydrates [i](#)

There are no monosaccharides in this entry.

6.4 Ligands [i](#)

In the following table, the Atoms column lists the number of modelled atoms in the group and the number defined in the chemical component dictionary. The B-factors column lists the minimum,

median, 95th percentile and maximum values of B factors of atoms in the group. The column labelled 'Q< 0.9' lists the number of atoms with occupancy less than 0.9.

Mol	Type	Chain	Res	Atoms	RSCC	RSR	B-factors(\AA^2)	Q<0.9
3	EDO	A	1006	4/4	0.90	0.19	26,27,27,42	0
3	EDO	A	1003	4/4	0.96	0.11	15,20,22,31	0
3	EDO	A	1002	4/4	0.96	0.14	18,35,37,47	0
4	EPE	A	1007	15/15	0.96	0.14	30,46,62,63	0
3	EDO	A	1005	4/4	0.97	0.14	18,29,30,34	0
3	EDO	A	1004	4/4	0.98	0.17	18,33,35,49	0
5	B9D	A	1008	12/13	0.98	0.04	15,16,17,18	0
2	NI	A	1001	1/1	1.00	0.04	24,24,24,24	0

6.5 Other polymers [i](#)

There are no such residues in this entry.