



Full wwPDB X-ray Structure Validation Report ⓘ

Aug 28, 2023 – 12:34 AM EDT

PDB ID : 3JQ9
Title : Crystal structure of pteridine reductase 1 (PTR1) from Trypanosoma brucei in ternary complex with cofactor (NADP+) and inhibitor 2-amino-6-(1,3-benzodioxol-5-yl)-4-oxo-4,7-dihydro-3H-pyrrolo[2,3-d]pyrimidine-5-carbonitrile (AX1)
Authors : Tulloch, L.B.; Hunter, W.N.
Deposited on : 2009-09-06
Resolution : 2.30 Å(reported)

This is a Full wwPDB X-ray Structure Validation Report for a publicly released PDB entry.

We welcome your comments at validation@mail.wwpdb.org

A user guide is available at

<https://www.wwpdb.org/validation/2017/XrayValidationReportHelp>

with specific help available everywhere you see the ⓘ symbol.

The types of validation reports are described at

<http://www.wwpdb.org/validation/2017/FAQs#types>.

The following versions of software and data (see [references](#) ①) were used in the production of this report:

MolProbity : 4.02b-467
Mogul : 1.8.5 (274361), CSD as541be (2020)
Xtrriage (Phenix) : 1.13
EDS : 2.35
buster-report : 1.1.7 (2018)
Percentile statistics : 20191225.v01 (using entries in the PDB archive December 25th 2019)
Refmac : 5.8.0158
CCP4 : 7.0.044 (Gargrove)
Ideal geometry (proteins) : Engh & Huber (2001)
Ideal geometry (DNA, RNA) : Parkinson et al. (1996)
Validation Pipeline (wwPDB-VP) : 2.35

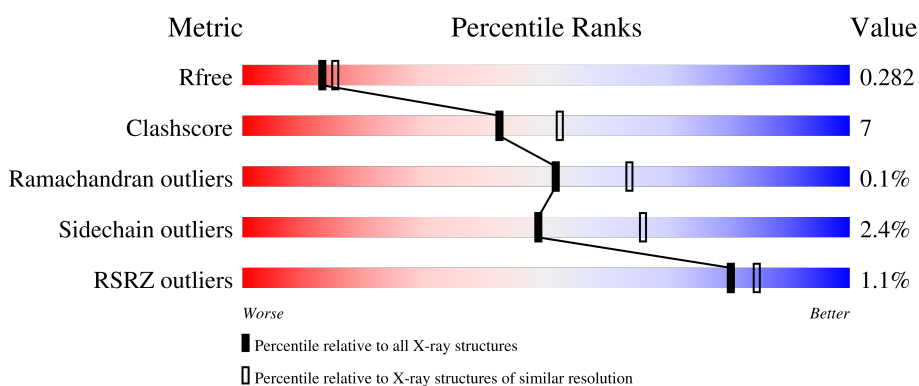
1 Overall quality at a glance i

The following experimental techniques were used to determine the structure:

X-RAY DIFFRACTION

The reported resolution of this entry is 2.30 Å.

Percentile scores (ranging between 0-100) for global validation metrics of the entry are shown in the following graphic. The table shows the number of entries on which the scores are based.



Metric	Whole archive (#Entries)	Similar resolution (#Entries, resolution range(Å))
R_{free}	130704	5042 (2.30-2.30)
Clashscore	141614	5643 (2.30-2.30)
Ramachandran outliers	138981	5575 (2.30-2.30)
Sidechain outliers	138945	5575 (2.30-2.30)
RSRZ outliers	127900	4938 (2.30-2.30)

The table below summarises the geometric issues observed across the polymeric chains and their fit to the electron density. The red, orange, yellow and green segments of the lower bar indicate the fraction of residues that contain outliers for ≥ 3 , 2, 1 and 0 types of geometric quality criteria respectively. A grey segment represents the fraction of residues that are not modelled. The numeric value for each fraction is indicated below the corresponding segment, with a dot representing fractions $\leq 5\%$. The upper red bar (where present) indicates the fraction of residues that have poor fit to the electron density. The numeric value is given above the bar.

Mol	Chain	Length	Quality of chain
1	A	288	
1	B	288	
2	C	288	
2	D	288	

2 Entry composition i

There are 5 unique types of molecules in this entry. The entry contains 8001 atoms, of which 0 are hydrogens and 0 are deuteriums.

In the tables below, the ZeroOcc column contains the number of atoms modelled with zero occupancy, the AltConf column contains the number of residues with at least one atom in alternate conformation and the Trace column contains the number of residues modelled with at most 2 atoms.

- Molecule 1 is a protein called Pteridine reductase 1.

Mol	Chain	Residues	Atoms					ZeroOcc	AltConf	Trace
			Total	C	N	O	S			
1	A	249	1879	1183	330	354	12	0	6	0
1	B	248	1893	1188	330	364	11	0	12	0

There are 40 discrepancies between the modelled and reference sequences:

Chain	Residue	Modelled	Actual	Comment	Reference
A	-19	MET	-	expression tag	UNP Q581W1
A	-18	GLY	-	expression tag	UNP Q581W1
A	-17	SER	-	expression tag	UNP Q581W1
A	-16	SER	-	expression tag	UNP Q581W1
A	-15	HIS	-	expression tag	UNP Q581W1
A	-14	HIS	-	expression tag	UNP Q581W1
A	-13	HIS	-	expression tag	UNP Q581W1
A	-12	HIS	-	expression tag	UNP Q581W1
A	-11	HIS	-	expression tag	UNP Q581W1
A	-10	HIS	-	expression tag	UNP Q581W1
A	-9	SER	-	expression tag	UNP Q581W1
A	-8	SER	-	expression tag	UNP Q581W1
A	-7	GLY	-	expression tag	UNP Q581W1
A	-6	LEU	-	expression tag	UNP Q581W1
A	-5	VAL	-	expression tag	UNP Q581W1
A	-4	PRO	-	expression tag	UNP Q581W1
A	-3	ARG	-	expression tag	UNP Q581W1
A	-2	GLY	-	expression tag	UNP Q581W1
A	-1	SER	-	expression tag	UNP Q581W1
A	0	HIS	-	expression tag	UNP Q581W1
B	-19	MET	-	expression tag	UNP Q581W1
B	-18	GLY	-	expression tag	UNP Q581W1
B	-17	SER	-	expression tag	UNP Q581W1
B	-16	SER	-	expression tag	UNP Q581W1
B	-15	HIS	-	expression tag	UNP Q581W1

Continued on next page...

Continued from previous page...

Chain	Residue	Modelled	Actual	Comment	Reference
B	-14	HIS	-	expression tag	UNP Q581W1
B	-13	HIS	-	expression tag	UNP Q581W1
B	-12	HIS	-	expression tag	UNP Q581W1
B	-11	HIS	-	expression tag	UNP Q581W1
B	-10	HIS	-	expression tag	UNP Q581W1
B	-9	SER	-	expression tag	UNP Q581W1
B	-8	SER	-	expression tag	UNP Q581W1
B	-7	GLY	-	expression tag	UNP Q581W1
B	-6	LEU	-	expression tag	UNP Q581W1
B	-5	VAL	-	expression tag	UNP Q581W1
B	-4	PRO	-	expression tag	UNP Q581W1
B	-3	ARG	-	expression tag	UNP Q581W1
B	-2	GLY	-	expression tag	UNP Q581W1
B	-1	SER	-	expression tag	UNP Q581W1
B	0	HIS	-	expression tag	UNP Q581W1

- Molecule 2 is a protein called Pteridine reductase 1.

Mol	Chain	Residues	Atoms					ZeroOcc	AltConf	Trace
			Total	C	N	O	S			
2	C	249	1871	1176	330	354	11	0	10	0
2	D	249	1864	1172	328	353	11	0	7	0

There are 40 discrepancies between the modelled and reference sequences:

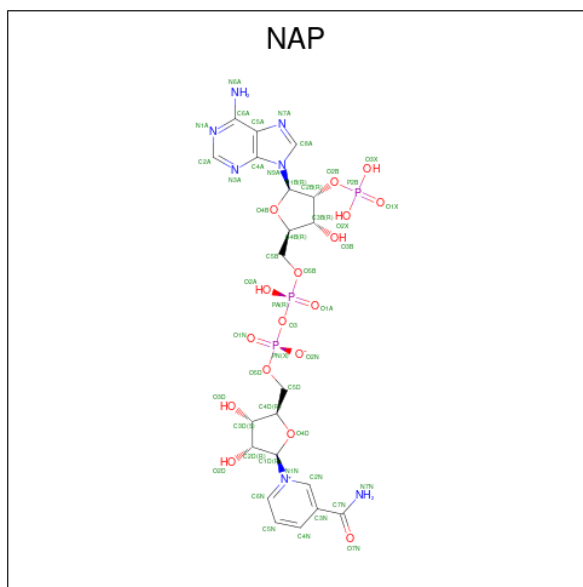
Chain	Residue	Modelled	Actual	Comment	Reference
C	-19	MET	-	expression tag	UNP Q581W1
C	-18	GLY	-	expression tag	UNP Q581W1
C	-17	SER	-	expression tag	UNP Q581W1
C	-16	SER	-	expression tag	UNP Q581W1
C	-15	HIS	-	expression tag	UNP Q581W1
C	-14	HIS	-	expression tag	UNP Q581W1
C	-13	HIS	-	expression tag	UNP Q581W1
C	-12	HIS	-	expression tag	UNP Q581W1
C	-11	HIS	-	expression tag	UNP Q581W1
C	-10	HIS	-	expression tag	UNP Q581W1
C	-9	SER	-	expression tag	UNP Q581W1
C	-8	SER	-	expression tag	UNP Q581W1
C	-7	GLY	-	expression tag	UNP Q581W1
C	-6	LEU	-	expression tag	UNP Q581W1
C	-5	VAL	-	expression tag	UNP Q581W1

Continued on next page...

Continued from previous page...

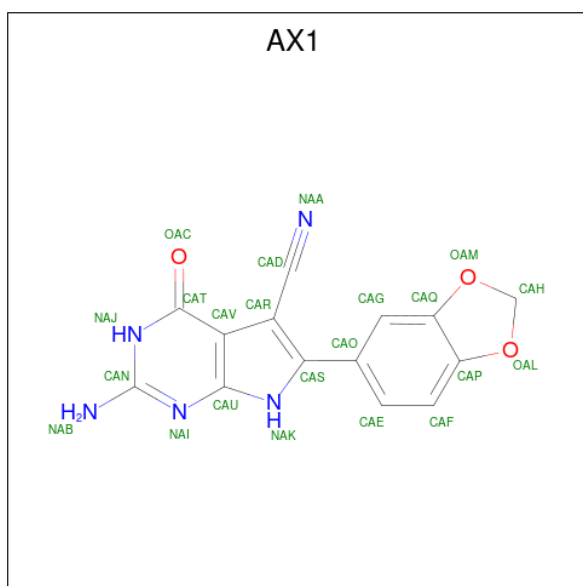
Chain	Residue	Modelled	Actual	Comment	Reference
C	-4	PRO	-	expression tag	UNP Q581W1
C	-3	ARG	-	expression tag	UNP Q581W1
C	-2	GLY	-	expression tag	UNP Q581W1
C	-1	SER	-	expression tag	UNP Q581W1
C	0	HIS	-	expression tag	UNP Q581W1
D	-19	MET	-	expression tag	UNP Q581W1
D	-18	GLY	-	expression tag	UNP Q581W1
D	-17	SER	-	expression tag	UNP Q581W1
D	-16	SER	-	expression tag	UNP Q581W1
D	-15	HIS	-	expression tag	UNP Q581W1
D	-14	HIS	-	expression tag	UNP Q581W1
D	-13	HIS	-	expression tag	UNP Q581W1
D	-12	HIS	-	expression tag	UNP Q581W1
D	-11	HIS	-	expression tag	UNP Q581W1
D	-10	HIS	-	expression tag	UNP Q581W1
D	-9	SER	-	expression tag	UNP Q581W1
D	-8	SER	-	expression tag	UNP Q581W1
D	-7	GLY	-	expression tag	UNP Q581W1
D	-6	LEU	-	expression tag	UNP Q581W1
D	-5	VAL	-	expression tag	UNP Q581W1
D	-4	PRO	-	expression tag	UNP Q581W1
D	-3	ARG	-	expression tag	UNP Q581W1
D	-2	GLY	-	expression tag	UNP Q581W1
D	-1	SER	-	expression tag	UNP Q581W1
D	0	HIS	-	expression tag	UNP Q581W1

- Molecule 3 is NADP NICOTINAMIDE-ADENINE-DINUCLEOTIDE PHOSPHATE (three-letter code: NAP) (formula: C₂₁H₂₈N₇O₁₇P₃).



Mol	Chain	Residues	Atoms					ZeroOcc	AltConf	
			Total	C	N	O	P			
3	A	1	Total	48	21	7	17	3	0	0
3	B	1	Total	48	21	7	17	3	0	0
3	C	1	Total	48	21	7	17	3	0	0
3	D	1	Total	48	21	7	17	3	0	0

- Molecule 4 is 2-amino-6-(1,3-benzodioxol-5-yl)-4-oxo-4,7-dihydro-3H-pyrrolo[2,3-d]pyrimidin-5-carbonitrile (three-letter code: AX1) (formula: C₁₄H₉N₅O₃).



Mol	Chain	Residues	Atoms				ZeroOcc	AltConf
4	A	1	Total	C	N	O	0	0
			22	14	5	3		
4	B	1	Total	C	N	O	0	0
			22	14	5	3		
4	C	1	Total	C	N	O	0	0
			22	14	5	3		
4	D	1	Total	C	N	O	0	0
			22	14	5	3		

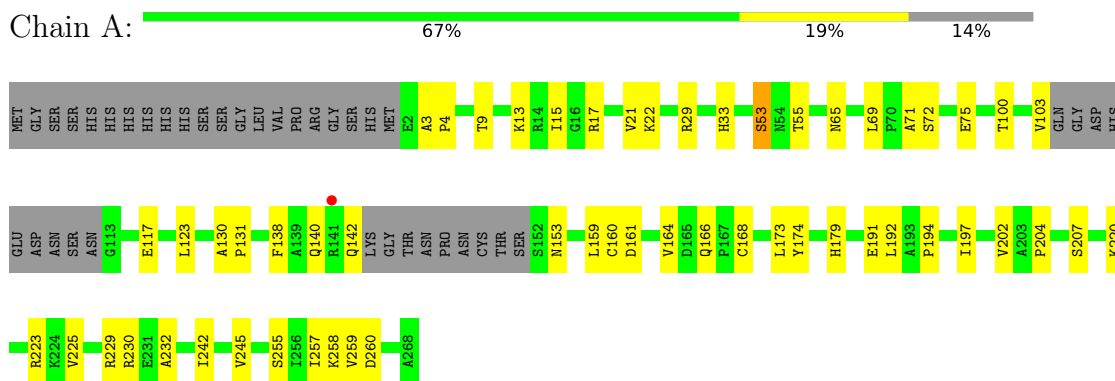
- Molecule 5 is water.

Mol	Chain	Residues	Atoms		ZeroOcc	AltConf
5	A	66	Total	O	0	0
			66	66		
5	B	52	Total	O	0	0
			52	52		
5	C	44	Total	O	0	0
			44	44		
5	D	52	Total	O	0	0
			52	52		

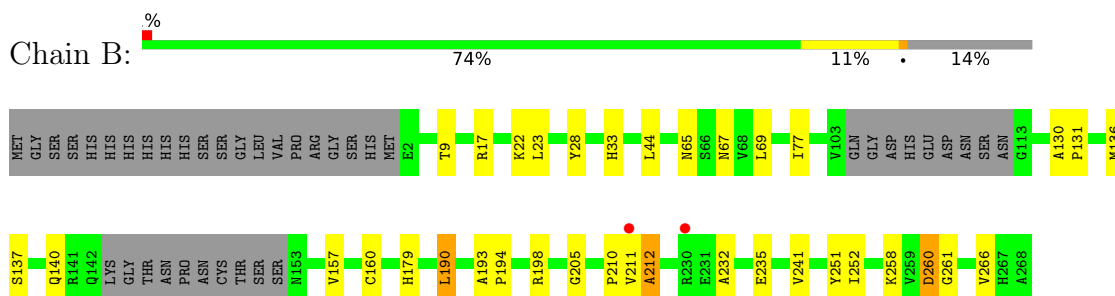
3 Residue-property plots [i](#)

These plots are drawn for all protein, RNA, DNA and oligosaccharide chains in the entry. The first graphic for a chain summarises the proportions of the various outlier classes displayed in the second graphic. The second graphic shows the sequence view annotated by issues in geometry and electron density. Residues are color-coded according to the number of geometric quality criteria for which they contain at least one outlier: green = 0, yellow = 1, orange = 2 and red = 3 or more. A red dot above a residue indicates a poor fit to the electron density ($RSRZ > 2$). Stretches of 2 or more consecutive residues without any outlier are shown as a green connector. Residues present in the sample, but not in the model, are shown in grey.

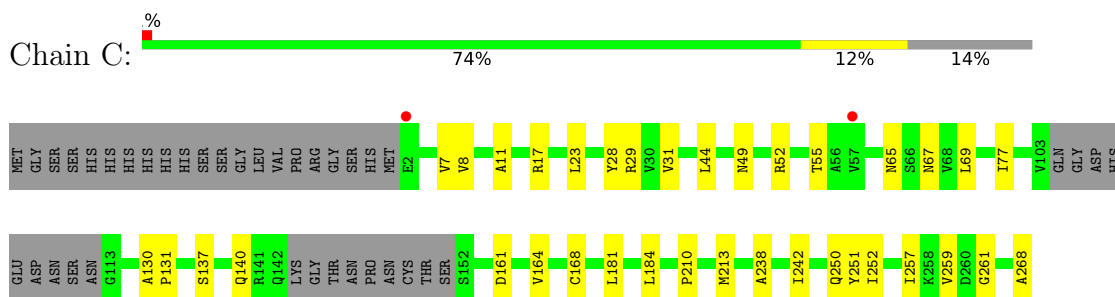
- Molecule 1: Pteridine reductase 1



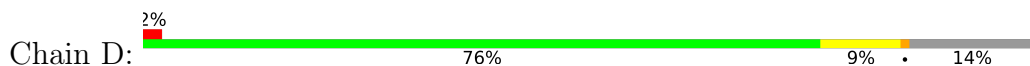
- Molecule 1: Pteridine reductase 1

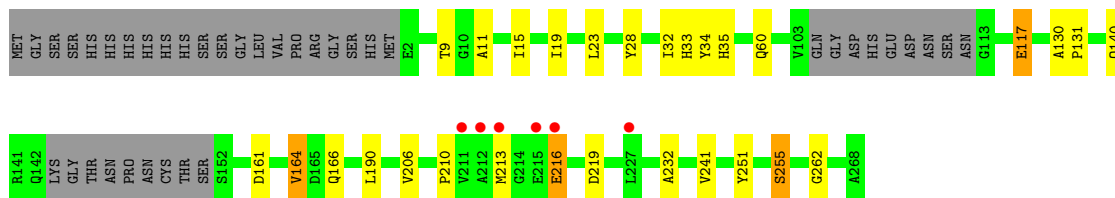


- Molecule 2: Pteridine reductase 1



- Molecule 2: Pteridine reductase 1





4 Data and refinement statistics i

Property	Value	Source
Space group	P 1 21 1	Depositor
Cell constants a, b, c, α , β , γ	74.25Å 89.20Å 84.57Å 90.00° 115.69° 90.00°	Depositor
Resolution (Å)	76.25 – 2.30 76.21 – 2.30	Depositor EDS
% Data completeness (in resolution range)	90.7 (76.25-2.30) 90.7 (76.21-2.30)	Depositor EDS
R_{merge}	0.07	Depositor
R_{sym}	0.07	Depositor
$\langle I/\sigma(I) \rangle$ ¹	2.27 (at 2.29Å)	Xtrriage
Refinement program	REFMAC	Depositor
R, R_{free}	0.231 , 0.286 0.229 , 0.282	Depositor DCC
R_{free} test set	2036 reflections (5.07%)	wwPDB-VP
Wilson B-factor (Å ²)	31.9	Xtrriage
Anisotropy	0.955	Xtrriage
Bulk solvent k_{sol} (e/Å ³), B_{sol} (Å ²)	0.36 , 52.8	EDS
L-test for twinning ²	$\langle L \rangle = 0.45$, $\langle L^2 \rangle = 0.28$	Xtrriage
Estimated twinning fraction	0.042 for h,-k,-h-l	Xtrriage
F_o, F_c correlation	0.94	EDS
Total number of atoms	8001	wwPDB-VP
Average B, all atoms (Å ²)	41.0	wwPDB-VP

Xtrriage's analysis on translational NCS is as follows: *The analyses of the Patterson function reveals a significant off-origin peak that is 29.11 % of the origin peak, indicating pseudo-translational symmetry. The chance of finding a peak of this or larger height randomly in a structure without pseudo-translational symmetry is equal to 1.6385e-03. The detected translational NCS is most likely also responsible for the elevated intensity ratio.*

¹Intensities estimated from amplitudes.

²Theoretical values of $\langle |L| \rangle$, $\langle L^2 \rangle$ for acentric reflections are 0.5, 0.333 respectively for untwinned datasets, and 0.375, 0.2 for perfectly twinned datasets.

5 Model quality [i](#)

5.1 Standard geometry [i](#)

Bond lengths and bond angles in the following residue types are not validated in this section: CSX, AX1, NAP

The Z score for a bond length (or angle) is the number of standard deviations the observed value is removed from the expected value. A bond length (or angle) with $|Z| > 5$ is considered an outlier worth inspection. RMSZ is the root-mean-square of all Z scores of the bond lengths (or angles).

Mol	Chain	Bond lengths		Bond angles	
		RMSZ	# $ Z > 5$	RMSZ	# $ Z > 5$
1	A	0.94	2/1921 (0.1%)	0.49	0/2604
1	B	0.36	0/1932	0.53	0/2620
2	C	0.36	0/1898	0.51	0/2573
2	D	0.36	0/1889	0.51	0/2560
All	All	0.56	2/7640 (0.0%)	0.51	0/10357

All (2) bond length outliers are listed below:

Mol	Chain	Res	Type	Atoms	Z	Observed(Å)	Ideal(Å)
1	A	53[A]	SER	CB-OG	26.68	1.76	1.42
1	A	53[B]	SER	CB-OG	26.68	1.76	1.42

There are no bond angle outliers.

There are no chirality outliers.

There are no planarity outliers.

5.2 Too-close contacts [i](#)

In the following table, the Non-H and H(model) columns list the number of non-hydrogen atoms and hydrogen atoms in the chain respectively. The H(added) column lists the number of hydrogen atoms added and optimized by MolProbity. The Clashes column lists the number of clashes within the asymmetric unit, whereas Symm-Clashes lists symmetry-related clashes.

Mol	Chain	Non-H	H(model)	H(added)	Clashes	Symm-Clashes
1	A	1879	0	1918	32	0
1	B	1893	0	1911	31	0
2	C	1871	0	1901	27	0
2	D	1864	0	1895	20	0
3	A	48	0	25	1	0

Continued on next page...

Continued from previous page...

Mol	Chain	Non-H	H(model)	H(added)	Clashes	Symm-Clashes
3	B	48	0	25	1	0
3	C	48	0	25	0	0
3	D	48	0	25	1	0
4	A	22	0	9	3	0
4	B	22	0	9	3	0
4	C	22	0	9	6	0
4	D	22	0	9	3	0
5	A	66	0	0	6	0
5	B	52	0	0	5	0
5	C	44	0	0	6	0
5	D	52	0	0	2	0
All	All	8001	0	7761	108	0

The all-atom clashscore is defined as the number of clashes found per 1000 atoms (including hydrogen atoms). The all-atom clashscore for this structure is 7.

All (108) close contacts within the same asymmetric unit are listed below, sorted by their clash magnitude.

Atom-1	Atom-2	Interatomic distance (Å)	Clash overlap (Å)
1:A:53[A]:SER:OG	1:A:53[A]:SER:CB	1.76	1.31
1:A:258:LYS:HB3	5:A:332:HOH:O	1.75	0.86
1:B:258:LYS:HD2	5:B:305:HOH:O	1.78	0.82
1:B:211:VAL:HB	1:B:212:ALA:HB2	1.62	0.81
2:D:15:ILE:O	2:D:19:ILE:HG12	1.81	0.81
2:D:35:HIS:HB3	3:D:269:NAP:O3X	1.86	0.76
4:B:270:AX1:HAE	4:B:270:AX1:CAD	2.16	0.75
2:D:9:THR:HA	2:D:33:HIS:HB3	1.68	0.75
1:A:22:LYS:HG2	1:A:242:ILE:HG13	1.69	0.74
2:C:7:VAL:HG23	2:C:31:VAL:HB	1.69	0.74
4:A:270:AX1:CAD	4:A:270:AX1:HAE	2.18	0.74
2:C:168[B]:CSX:HG	4:C:270:AX1:HAHA	1.52	0.73
2:C:8:VAL:O	5:C:302:HOH:O	2.06	0.72
2:C:259:VAL:HA	5:C:327:HOH:O	1.88	0.72
1:A:220:LYS:HA	1:A:223:ARG:HD2	1.75	0.69
1:B:9:THR:HA	1:B:33:HIS:HB3	1.81	0.63
2:D:206:VAL:CG2	4:D:270:AX1:HAF	2.29	0.62
1:A:257:ILE:HG13	5:A:313:HOH:O	2.00	0.61
1:A:9:THR:HA	1:A:33:HIS:HB3	1.82	0.61
1:B:22:LYS:NZ	1:B:235[B]:GLU:HG3	2.15	0.61
1:B:211:VAL:N	1:B:212:ALA:HB3	2.16	0.60
1:A:225:VAL:O	1:A:229:ARG:HD3	2.02	0.60

Continued on next page...

Continued from previous page...

Atom-1	Atom-2	Interatomic distance (Å)	Clash overlap (Å)
5:A:284:HOH:O	1:B:190:LEU:HD11	2.02	0.60
1:B:258:LYS:HB2	2:D:255:SER:OG	2.02	0.59
4:C:270:AX1:HAE	4:C:270:AX1:CAD	2.32	0.59
2:D:206:VAL:HG23	4:D:270:AX1:HAF	1.84	0.58
2:C:130:ALA:HB3	2:C:131:PRO:HD3	1.83	0.58
1:A:100:THR:HG21	1:A:173:LEU:HD12	1.84	0.58
4:A:270:AX1:CAD	4:A:270:AX1:CAE	2.82	0.57
1:B:23:LEU:O	1:B:28:TYR:HB2	2.05	0.56
4:B:270:AX1:CAD	4:B:270:AX1:CAE	2.81	0.56
1:A:130:ALA:HB3	1:A:131:PRO:HD3	1.87	0.55
2:C:11:ALA:HB3	5:C:302:HOH:O	2.06	0.55
1:A:153:ASN:ND2	1:A:245:VAL:O	2.40	0.55
1:A:22:LYS:HG2	1:A:242:ILE:CG1	2.36	0.53
2:D:210:PRO:HG2	2:D:213:MET:HB2	1.89	0.53
2:C:210:PRO:HG2	2:C:213:MET:HG3	1.90	0.53
2:D:161:ASP:HB3	2:D:164:VAL:HG13	1.91	0.52
1:B:210:PRO:HD3	4:B:270:AX1:NAA	2.24	0.52
1:B:211:VAL:CB	1:B:212:ALA:HB2	2.39	0.52
2:C:161:ASP:HB3	2:C:164:VAL:HG13	1.92	0.51
1:A:72:SER:HB3	5:A:304:HOH:O	2.11	0.51
1:A:260:ASP:CG	5:A:332:HOH:O	2.48	0.51
1:B:130:ALA:HB3	1:B:131:PRO:HD3	1.93	0.51
2:C:67:ASN:HD22	2:D:117:GLU:HG3	1.75	0.51
1:A:15:ILE:HD11	1:A:207:SER:HB3	1.92	0.50
1:A:71:ALA:O	1:A:75:GLU:HG2	2.12	0.50
1:B:160:CYS:O	3:B:269:NAP:H6N	2.12	0.49
1:B:232:ALA:HB2	2:D:251:TYR:CE2	2.47	0.49
4:C:270:AX1:CAD	4:C:270:AX1:CAE	2.91	0.49
2:C:210:PRO:HD3	4:C:270:AX1:NAA	2.27	0.49
1:A:17:ARG:O	1:A:21:VAL:HG23	2.12	0.49
1:B:211:VAL:N	1:B:212:ALA:CB	2.75	0.49
1:B:258:LYS:NZ	5:B:277:HOH:O	2.46	0.48
1:A:160:CYS:O	3:A:269:NAP:H6N	2.14	0.48
1:B:193:ALA:HB3	1:B:194:PRO:HD3	1.95	0.48
1:A:65:ASN:HA	1:A:69:LEU:HD22	1.96	0.48
1:A:123:LEU:HD22	1:A:174:TYR:HB2	1.95	0.48
1:A:257:ILE:HG12	2:C:257:ILE:HG12	1.95	0.47
2:C:140:GLN:NE2	5:C:323:HOH:O	2.47	0.47
1:A:117:GLU:HG3	1:B:67:ASN:HD22	1.79	0.47
1:B:198:ARG:HD2	1:B:252:ILE:O	2.16	0.46
2:D:34[A]:TYR:CZ	2:D:60:GLN:HB2	2.51	0.46

Continued on next page...

Continued from previous page...

Atom-1	Atom-2	Interatomic distance (Å)	Clash overlap (Å)
1:B:9:THR:HG21	5:B:282:HOH:O	2.16	0.46
2:D:219:ASP:HB3	5:D:281:HOH:O	2.16	0.46
1:A:258:LYS:HD2	5:A:332:HOH:O	2.16	0.46
2:C:65:ASN:HA	2:C:69:LEU:HD22	1.98	0.46
2:D:130:ALA:HB3	2:D:131:PRO:HD3	1.98	0.46
1:B:77:ILE:HG13	1:B:137:SER:HB2	1.98	0.45
2:C:23:LEU:O	2:C:28:TYR:HB2	2.17	0.45
1:B:261:GLY:N	5:B:322:HOH:O	2.47	0.45
2:D:11:ALA:HB3	2:D:32:ILE:HG23	1.99	0.45
1:A:168:CYS:SG	4:A:270:AX1:HAHA	2.57	0.44
1:B:205:GLY:HA3	1:B:260:ASP:HB2	1.98	0.44
2:C:181:LEU:HD12	2:C:184:LEU:HD23	1.99	0.44
2:D:210:PRO:HD3	4:D:270:AX1:NAA	2.32	0.44
2:D:23:LEU:O	2:D:28:TYR:HB2	2.17	0.44
1:A:259:VAL:HG22	2:C:252:ILE:HG12	2.00	0.44
1:B:251:TYR:CE2	2:D:232:ALA:HB2	2.53	0.44
1:B:266:VAL:HB	2:C:268:ALA:HB2	2.00	0.43
2:C:77:ILE:HG13	2:C:137:SER:HB2	2.01	0.43
1:B:157:VAL:HG11	1:B:241:VAL:HG13	2.00	0.43
1:B:65:ASN:HA	1:B:69:LEU:HD22	2.00	0.43
2:C:29:ARG:HG2	2:C:55:THR:HG22	2.01	0.43
2:C:11:ALA:CB	5:C:302:HOH:O	2.63	0.43
2:C:261:GLY:N	5:C:306:HOH:O	2.51	0.43
2:D:19:ILE:HD12	2:D:241:VAL:HG21	2.00	0.43
1:B:211:VAL:CA	1:B:212:ALA:CB	2.97	0.43
2:C:49:ASN:HA	2:C:52:ARG:O	2.19	0.42
1:A:191:GLU:O	1:A:194:PRO:HD2	2.19	0.42
2:C:238:ALA:O	2:C:242:ILE:HG12	2.20	0.42
1:A:29:ARG:HG2	1:A:55:THR:HG22	2.01	0.42
1:A:202:VAL:O	1:A:204:PRO:HD3	2.20	0.41
1:A:3:ALA:HA	1:A:4:PRO:HD3	1.88	0.41
1:A:138:PHE:O	1:A:142:GLN:HG2	2.19	0.41
1:B:17:ARG:HG3	1:B:44:LEU:HD22	2.03	0.41
1:A:232:ALA:HB2	2:C:251:TYR:CE2	2.55	0.41
2:C:17[B]:ARG:HH11	2:C:44:LEU:HB2	1.85	0.41
1:B:22:LYS:HZ1	1:B:235[B]:GLU:HG3	1.86	0.41
1:B:136:MET:O	1:B:140:GLN:HB2	2.21	0.41
2:C:17[B]:ARG:HG3	2:C:44:LEU:HD22	2.03	0.41
2:D:262:GLY:HA2	5:D:271:HOH:O	2.21	0.41
1:A:192:LEU:HB3	1:A:197:ILE:HB	2.03	0.40
2:C:168[A]:CSX:HG	4:C:270:AX1:HAHA	1.85	0.40

Continued on next page...

Continued from previous page...

Atom-1	Atom-2	Interatomic distance (Å)	Clash overlap (Å)
1:A:161:ASP:HB3	1:A:164:VAL:HG13	2.02	0.40
1:B:260:ASP:CG	5:B:305:HOH:O	2.59	0.40

There are no symmetry-related clashes.

5.3 Torsion angles [i](#)

5.3.1 Protein backbone [i](#)

In the following table, the Percentiles column shows the percent Ramachandran outliers of the chain as a percentile score with respect to all X-ray entries followed by that with respect to entries of similar resolution.

The Analysed column shows the number of residues for which the backbone conformation was analysed, and the total number of residues.

Mol	Chain	Analysed	Favoured	Allowed	Outliers	Percentiles	
1	A	248/288 (86%)	237 (96%)	11 (4%)	0	100	100
1	B	250/288 (87%)	239 (96%)	10 (4%)	1 (0%)	34	42
2	C	245/288 (85%)	234 (96%)	11 (4%)	0	100	100
2	D	244/288 (85%)	234 (96%)	10 (4%)	0	100	100
All	All	987/1152 (86%)	944 (96%)	42 (4%)	1 (0%)	51	64

All (1) Ramachandran outliers are listed below:

Mol	Chain	Res	Type
1	B	212	ALA

5.3.2 Protein sidechains [i](#)

In the following table, the Percentiles column shows the percent sidechain outliers of the chain as a percentile score with respect to all X-ray entries followed by that with respect to entries of similar resolution.

The Analysed column shows the number of residues for which the sidechain conformation was analysed, and the total number of residues.

Mol	Chain	Analysed	Rotameric	Outliers	Percentiles	
1	A	202/231 (87%)	193 (96%)	9 (4%)	27	39

Continued on next page...

Continued from previous page...

Mol	Chain	Analysed	Rotameric	Outliers	Percentiles	
1	B	204/231 (88%)	201 (98%)	3 (2%)	65	79
2	C	199/230 (86%)	198 (100%)	1 (0%)	88	95
2	D	198/230 (86%)	191 (96%)	7 (4%)	36	50
All	All	803/922 (87%)	783 (98%)	20 (2%)	49	65

All (20) residues with a non-rotameric sidechain are listed below:

Mol	Chain	Res	Type
1	A	13[A]	LYS
1	A	13[B]	LYS
1	A	103	VAL
1	A	140	GLN
1	A	159	LEU
1	A	166	GLN
1	A	179	HIS
1	A	230	ARG
1	A	255	SER
1	B	179	HIS
1	B	190	LEU
1	B	260	ASP
2	C	250	GLN
2	D	117	GLU
2	D	140	GLN
2	D	164	VAL
2	D	166	GLN
2	D	190	LEU
2	D	216	GLU
2	D	255	SER

Sometimes sidechains can be flipped to improve hydrogen bonding and reduce clashes. All (14) such sidechains are listed below:

Mol	Chain	Res	Type
1	A	25	GLN
1	A	166	GLN
1	A	175	ASN
1	A	186	GLN
1	A	267	HIS
1	B	65	ASN
1	B	67	ASN
1	B	175	ASN

Continued on next page...

Continued from previous page...

Mol	Chain	Res	Type
1	B	186	GLN
2	C	67	ASN
2	C	140	GLN
2	C	186	GLN
2	D	166	GLN
2	D	186	GLN

5.3.3 RNA [i](#)

There are no RNA molecules in this entry.

5.4 Non-standard residues in protein, DNA, RNA chains [i](#)

3 non-standard protein/DNA/RNA residues are modelled in this entry.

In the following table, the Counts columns list the number of bonds (or angles) for which Mogul statistics could be retrieved, the number of bonds (or angles) that are observed in the model and the number of bonds (or angles) that are defined in the Chemical Component Dictionary. The Link column lists molecule types, if any, to which the group is linked. The Z score for a bond length (or angle) is the number of standard deviations the observed value is removed from the expected value. A bond length (or angle) with $|Z| > 2$ is considered an outlier worth inspection. RMSZ is the root-mean-square of all Z scores of the bond lengths (or angles).

Mol	Type	Chain	Res	Link	Bond lengths			Bond angles		
					Counts	RMSZ	# Z > 2	Counts	RMSZ	# Z > 2
2	CSX	C	168[A]	-	3,6,7	0.60	0	1,6,8	0.51	0
2	CSX	C	168[B]	-	3,6,7	0.60	0	1,6,8	0.51	0
2	CSX	D	168	2	3,6,7	0.61	0	1,6,8	0.12	0

In the following table, the Chirals column lists the number of chiral outliers, the number of chiral centers analysed, the number of these observed in the model and the number defined in the Chemical Component Dictionary. Similar counts are reported in the Torsion and Rings columns. '-' means no outliers of that kind were identified.

Mol	Type	Chain	Res	Link	Chirals	Torsions	Rings
2	CSX	C	168[A]	-	-	0/1/5/7	-
2	CSX	C	168[B]	-	-	0/1/5/7	-
2	CSX	D	168	2	-	0/1/5/7	-

There are no bond length outliers.

There are no bond angle outliers.

There are no chirality outliers.

There are no torsion outliers.

There are no ring outliers.

2 monomers are involved in 2 short contacts:

Mol	Chain	Res	Type	Clashes	Symm-Clashes
2	C	168[A]	CSX	1	0
2	C	168[B]	CSX	1	0

5.5 Carbohydrates [i](#)

There are no monosaccharides in this entry.

5.6 Ligand geometry [i](#)

8 ligands are modelled in this entry.

In the following table, the Counts columns list the number of bonds (or angles) for which Mogul statistics could be retrieved, the number of bonds (or angles) that are observed in the model and the number of bonds (or angles) that are defined in the Chemical Component Dictionary. The Link column lists molecule types, if any, to which the group is linked. The Z score for a bond length (or angle) is the number of standard deviations the observed value is removed from the expected value. A bond length (or angle) with $|Z| > 2$ is considered an outlier worth inspection. RMSZ is the root-mean-square of all Z scores of the bond lengths (or angles).

Mol	Type	Chain	Res	Link	Bond lengths			Bond angles		
					Counts	RMSZ	# Z > 2	Counts	RMSZ	# Z > 2
3	NAP	A	269	-	45,52,52	1.80	4 (8%)	56,80,80	1.20	3 (5%)
4	AX1	A	270	-	21,25,25	1.22	2 (9%)	22,37,37	1.92	4 (18%)
4	AX1	B	270	-	21,25,25	1.26	2 (9%)	22,37,37	1.80	4 (18%)
4	AX1	D	270	-	21,25,25	1.26	2 (9%)	22,37,37	1.77	4 (18%)
3	NAP	B	269	-	45,52,52	1.81	4 (8%)	56,80,80	1.11	2 (3%)
4	AX1	C	270	-	21,25,25	1.20	1 (4%)	22,37,37	1.82	4 (18%)
3	NAP	C	269	-	45,52,52	1.71	4 (8%)	56,80,80	1.00	2 (3%)
3	NAP	D	269	-	45,52,52	1.78	4 (8%)	56,80,80	1.07	1 (1%)

In the following table, the Chirals column lists the number of chiral outliers, the number of chiral centers analysed, the number of these observed in the model and the number defined in the Chemical Component Dictionary. Similar counts are reported in the Torsion and Rings columns. '-' means no outliers of that kind were identified.

Mol	Type	Chain	Res	Link	Chirals	Torsions	Rings
3	NAP	A	269	-	-	4/31/67/67	0/5/5/5
4	AX1	A	270	-	-	0/0/12/12	0/4/4/4
4	AX1	B	270	-	-	0/0/12/12	0/4/4/4
4	AX1	D	270	-	-	0/0/12/12	0/4/4/4
3	NAP	B	269	-	-	1/31/67/67	0/5/5/5
4	AX1	C	270	-	-	0/0/12/12	0/4/4/4
3	NAP	C	269	-	-	0/31/67/67	0/5/5/5
3	NAP	D	269	-	-	2/31/67/67	0/5/5/5

All (23) bond length outliers are listed below:

Mol	Chain	Res	Type	Atoms	Z	Observed(Å)	Ideal(Å)
3	B	269	NAP	O7N-C7N	9.21	1.41	1.24
3	A	269	NAP	O7N-C7N	9.05	1.41	1.24
3	D	269	NAP	O7N-C7N	9.03	1.41	1.24
3	C	269	NAP	O7N-C7N	8.64	1.40	1.24
3	C	269	NAP	C2A-N3A	4.38	1.39	1.32
3	D	269	NAP	C2A-N3A	4.27	1.39	1.32
3	B	269	NAP	C2A-N3A	4.16	1.38	1.32
3	A	269	NAP	C2A-N3A	4.06	1.38	1.32
3	A	269	NAP	C2N-N1N	4.04	1.39	1.35
4	A	270	AX1	CAV-CAT	-3.65	1.39	1.47
3	B	269	NAP	C2N-N1N	3.65	1.39	1.35
4	B	270	AX1	CAV-CAT	-3.52	1.40	1.47
4	D	270	AX1	CAV-CAT	-3.51	1.40	1.47
4	C	270	AX1	CAV-CAT	-3.51	1.40	1.47
3	D	269	NAP	C2N-N1N	3.16	1.38	1.35
3	C	269	NAP	C2A-N1A	2.86	1.39	1.33
3	A	269	NAP	C2A-N1A	2.81	1.39	1.33
3	B	269	NAP	C2A-N1A	2.69	1.38	1.33
3	C	269	NAP	C2N-N1N	2.56	1.38	1.35
3	D	269	NAP	C2A-N1A	2.53	1.38	1.33
4	D	270	AX1	CAG-CAQ	2.17	1.40	1.36
4	B	270	AX1	CAG-CAQ	2.11	1.40	1.36
4	A	270	AX1	CAG-CAQ	2.05	1.40	1.36

All (24) bond angle outliers are listed below:

Mol	Chain	Res	Type	Atoms	Z	Observed(°)	Ideal(°)
3	D	269	NAP	N3A-C2A-N1A	-5.72	119.73	128.68
3	A	269	NAP	N3A-C2A-N1A	-5.58	119.95	128.68
3	B	269	NAP	N3A-C2A-N1A	-5.55	120.01	128.68
3	C	269	NAP	N3A-C2A-N1A	-5.19	120.57	128.68

Continued on next page...

Continued from previous page...

Mol	Chain	Res	Type	Atoms	Z	Observed(°)	Ideal(°)
4	A	270	AX1	OAM-CAQ-CAG	4.56	131.76	128.11
4	B	270	AX1	OAM-CAQ-CAG	4.55	131.75	128.11
4	D	270	AX1	OAM-CAQ-CAG	4.48	131.69	128.11
4	C	270	AX1	CAV-CAT-NAJ	4.21	118.92	115.36
4	C	270	AX1	OAM-CAQ-CAG	4.18	131.45	128.11
4	A	270	AX1	CAV-CAT-NAJ	4.15	118.87	115.36
3	A	269	NAP	C3N-C7N-N7N	4.02	122.57	117.75
4	D	270	AX1	CAV-CAT-NAJ	3.94	118.70	115.36
4	B	270	AX1	CAV-CAT-NAJ	3.90	118.66	115.36
4	D	270	AX1	CAN-NAJ-CAT	-3.41	118.81	125.10
4	B	270	AX1	CAN-NAJ-CAT	-3.32	118.98	125.10
4	A	270	AX1	CAN-NAJ-CAT	-3.27	119.07	125.10
4	A	270	AX1	OAL-CAH-OAM	-3.25	102.89	108.08
4	C	270	AX1	CAN-NAJ-CAT	-3.10	119.38	125.10
4	C	270	AX1	OAL-CAH-OAM	-2.78	103.64	108.08
4	B	270	AX1	OAL-CAH-OAM	-2.64	103.87	108.08
3	B	269	NAP	C3D-C2D-C1D	2.45	104.67	100.98
3	A	269	NAP	O7N-C7N-N7N	-2.28	119.33	122.58
4	D	270	AX1	OAL-CAH-OAM	-2.27	104.46	108.08
3	C	269	NAP	C3N-C7N-N7N	2.04	120.20	117.75

There are no chirality outliers.

All (7) torsion outliers are listed below:

Mol	Chain	Res	Type	Atoms
3	A	269	NAP	C5B-O5B-PA-O1A
3	A	269	NAP	C5B-O5B-PA-O3
3	A	269	NAP	O4B-C4B-C5B-O5B
3	A	269	NAP	O4D-C4D-C5D-O5D
3	D	269	NAP	PN-O3-PA-O1A
3	D	269	NAP	PN-O3-PA-O2A
3	B	269	NAP	C5B-O5B-PA-O1A

There are no ring outliers.

7 monomers are involved in 18 short contacts:

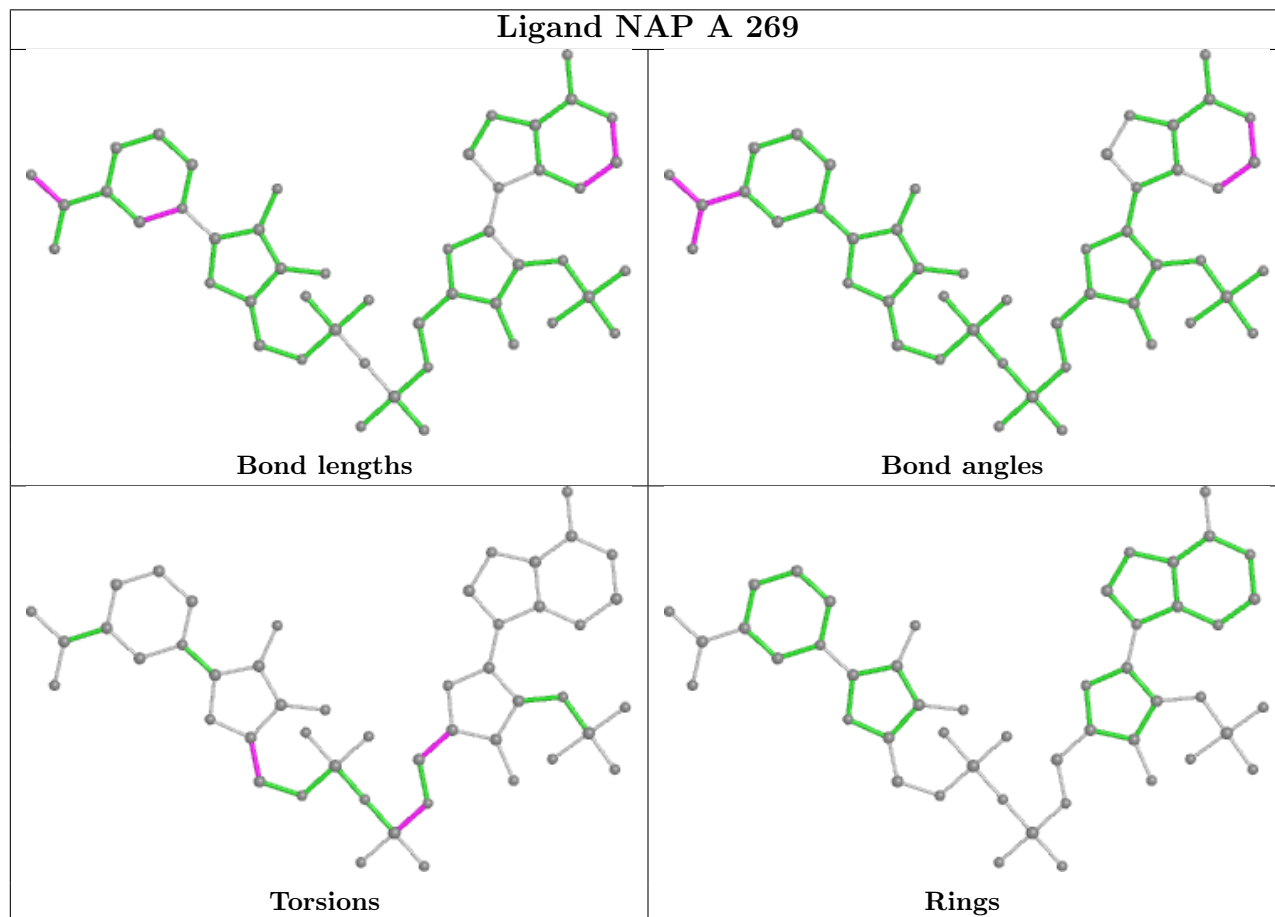
Mol	Chain	Res	Type	Clashes	Symm-Clashes
3	A	269	NAP	1	0
4	A	270	AX1	3	0
4	B	270	AX1	3	0
4	D	270	AX1	3	0

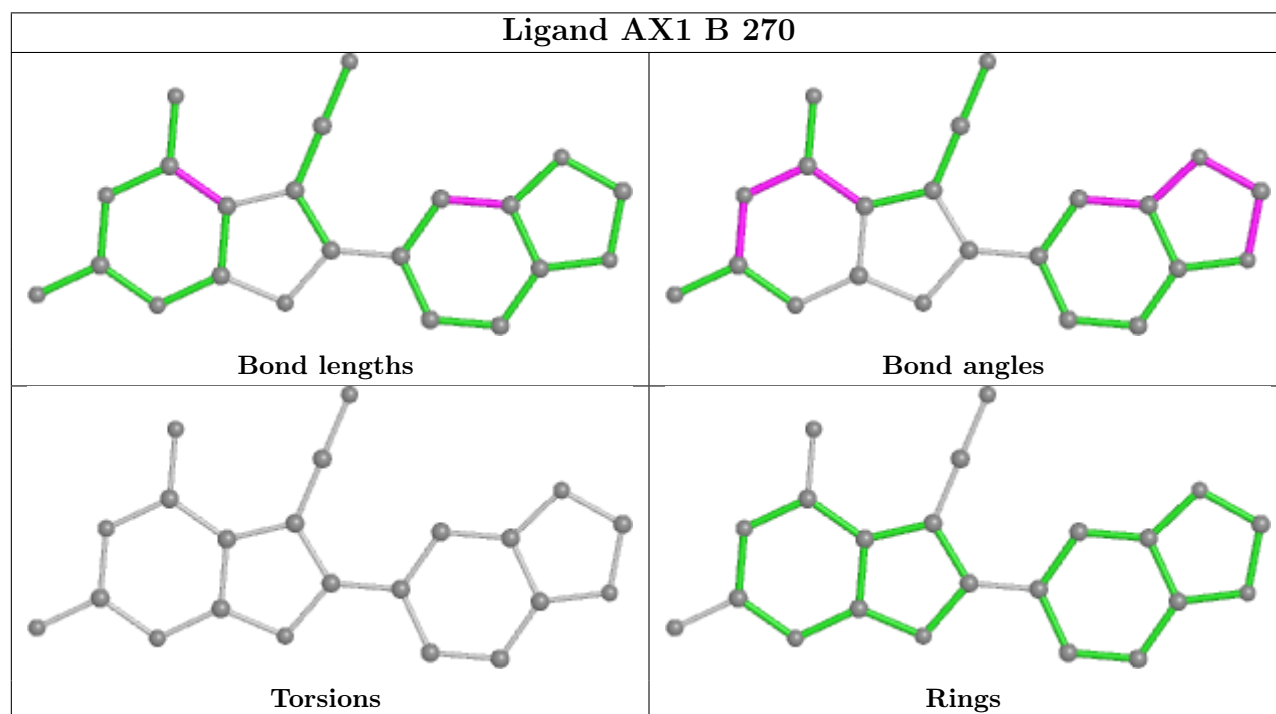
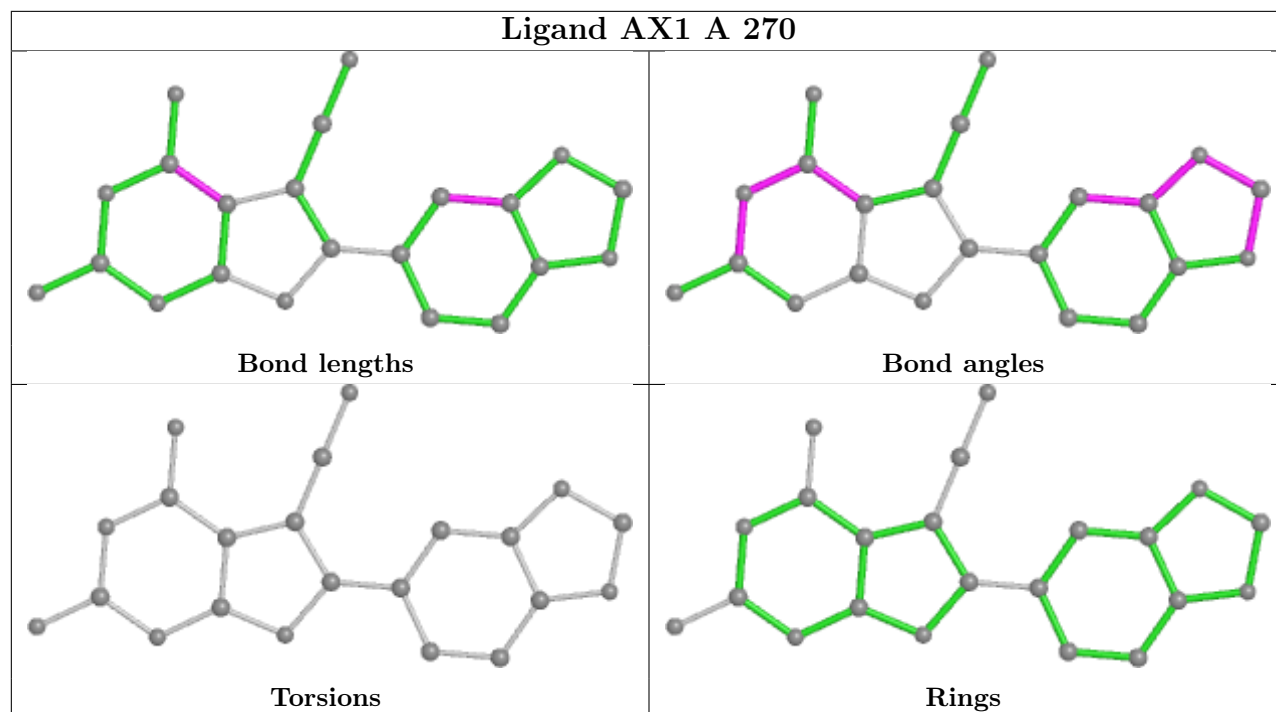
Continued on next page...

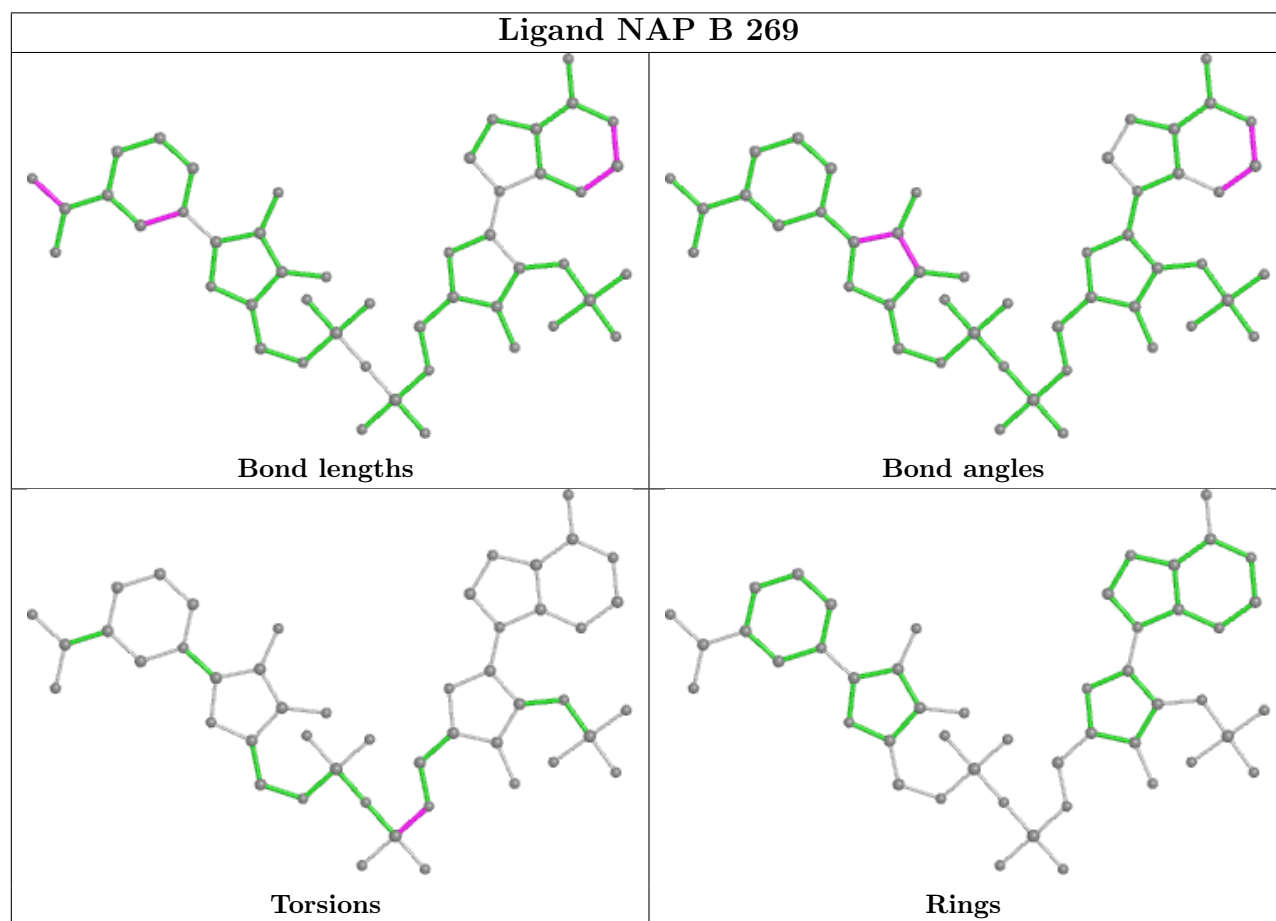
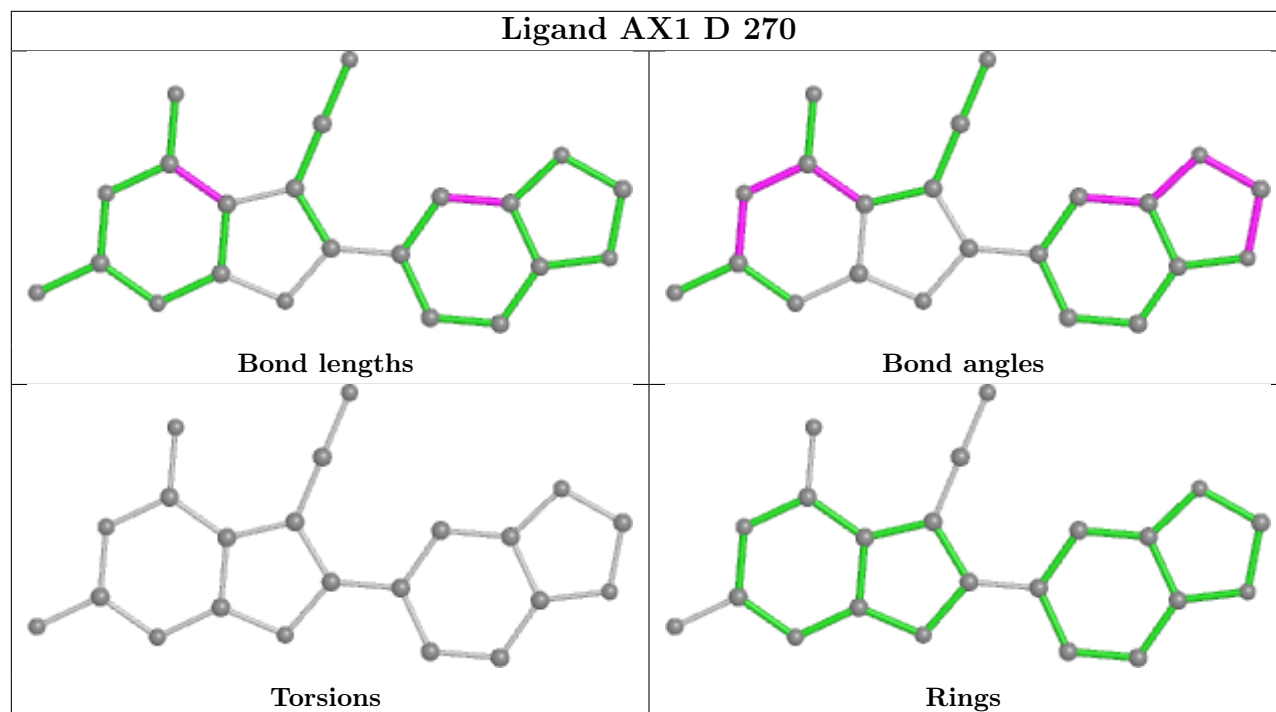
Continued from previous page...

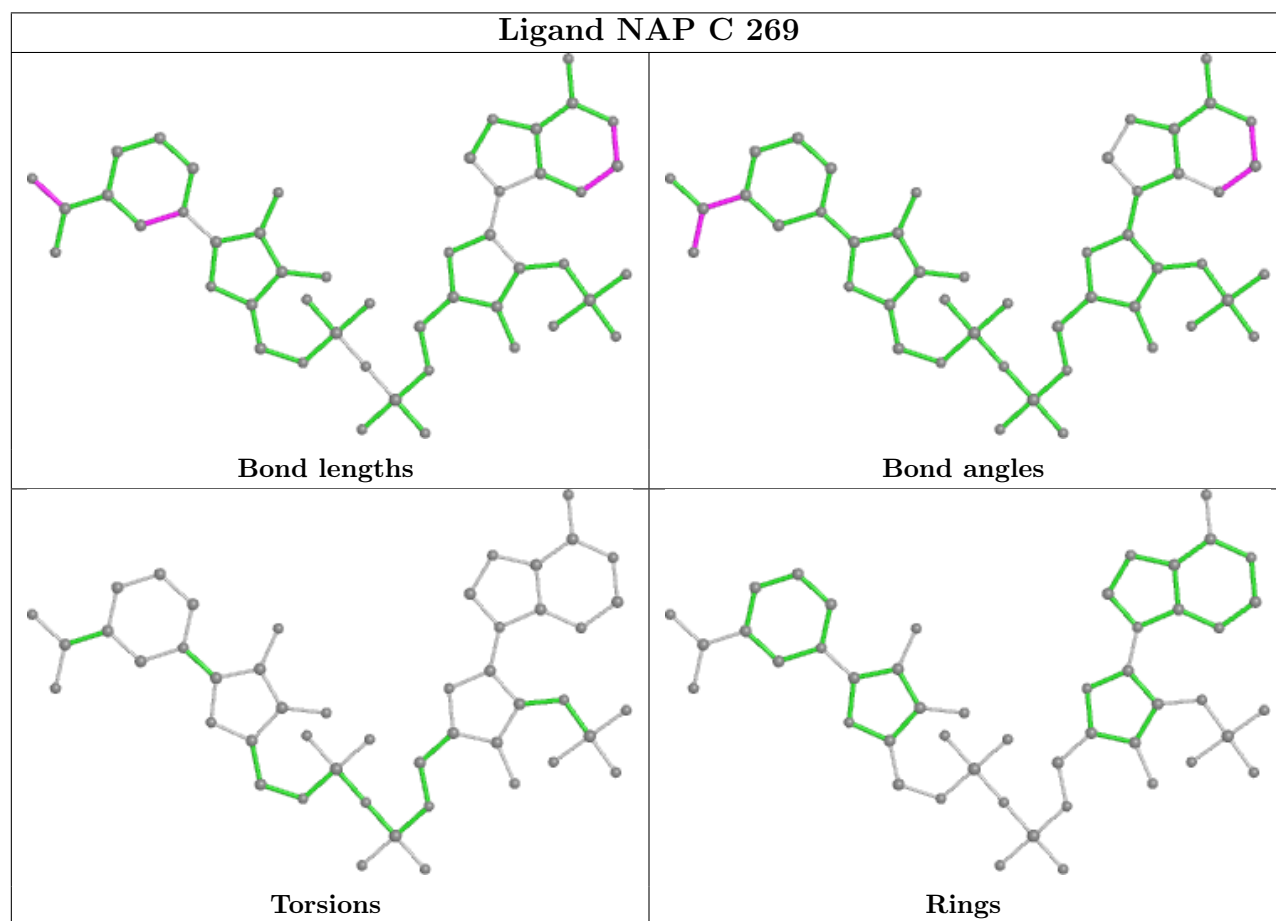
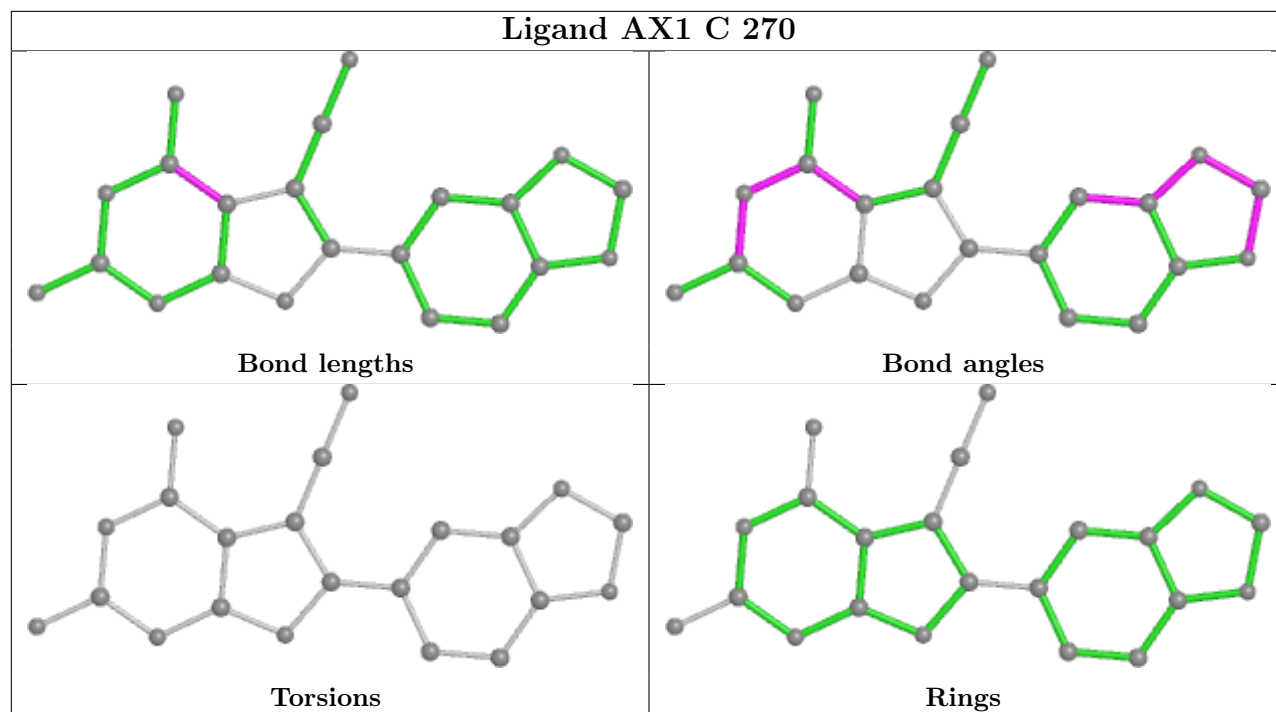
Mol	Chain	Res	Type	Clashes	Symm-Clashes
3	B	269	NAP	1	0
4	C	270	AX1	6	0
3	D	269	NAP	1	0

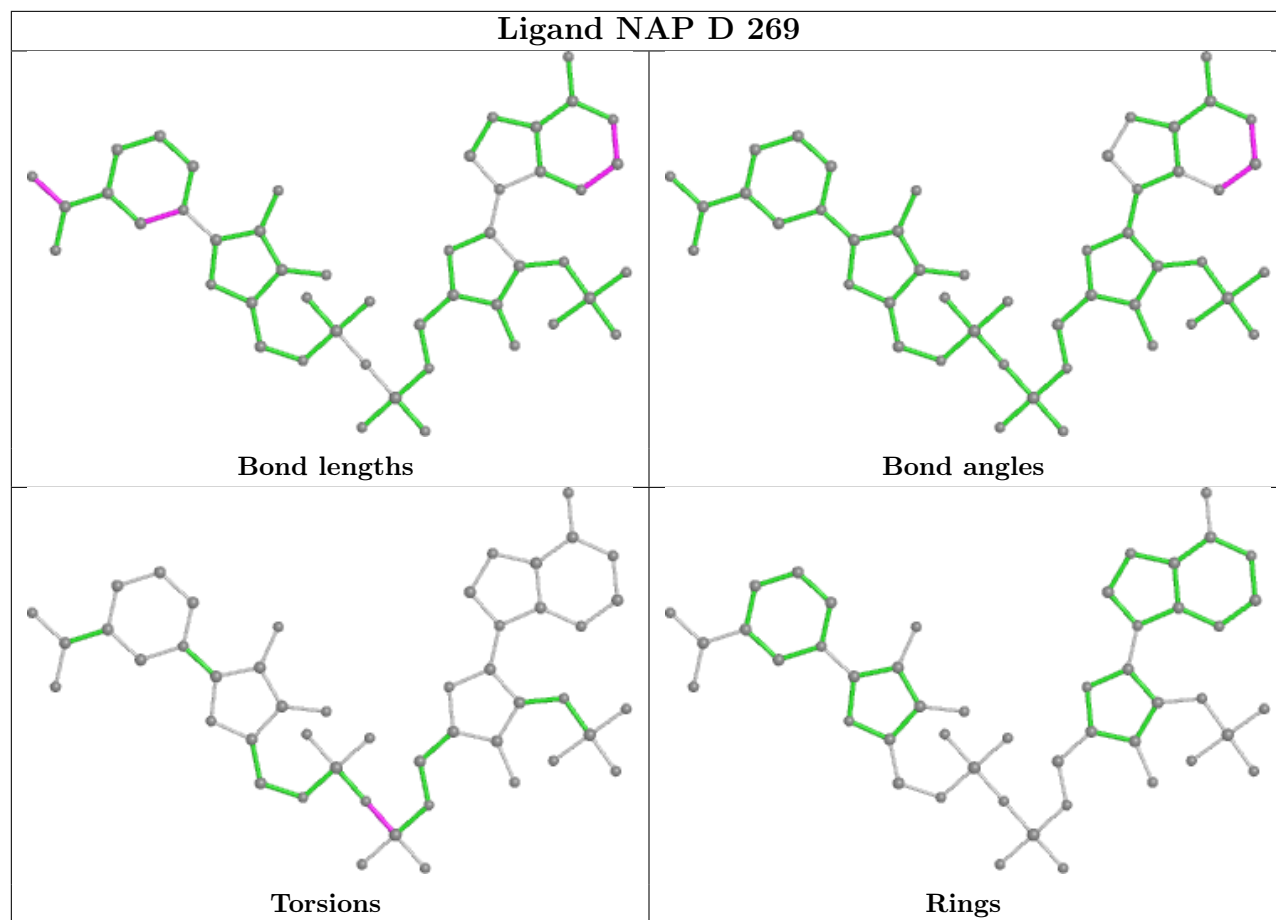
The following is a two-dimensional graphical depiction of Mogul quality analysis of bond lengths, bond angles, torsion angles, and ring geometry for all instances of the Ligand of Interest. In addition, ligands with molecular weight > 250 and outliers as shown on the validation Tables will also be included. For torsion angles, if less than 5% of the Mogul distribution of torsion angles is within 10 degrees of the torsion angle in question, then that torsion angle is considered an outlier. Any bond that is central to one or more torsion angles identified as an outlier by Mogul will be highlighted in the graph. For rings, the root-mean-square deviation (RMSD) between the ring in question and similar rings identified by Mogul is calculated over all ring torsion angles. If the average RMSD is greater than 60 degrees and the minimal RMSD between the ring in question and any Mogul-identified rings is also greater than 60 degrees, then that ring is considered an outlier. The outliers are highlighted in purple. The color gray indicates Mogul did not find sufficient equivalents in the CSD to analyse the geometry.











5.7 Other polymers [i](#)

There are no such residues in this entry.

5.8 Polymer linkage issues [i](#)

There are no chain breaks in this entry.

6 Fit of model and data [i](#)

6.1 Protein, DNA and RNA chains [i](#)

In the following table, the column labelled ‘#RSRZ> 2’ contains the number (and percentage) of RSRZ outliers, followed by percent RSRZ outliers for the chain as percentile scores relative to all X-ray entries and entries of similar resolution. The OWAB column contains the minimum, median, 95th percentile and maximum values of the occupancy-weighted average B-factor per residue. The column labelled ‘Q< 0.9’ lists the number of (and percentage) of residues with an average occupancy less than 0.9.

Mol	Chain	Analysed	<RSRZ>	#RSRZ>2	OWAB(Å ²)	Q<0.9
1	A	249/288 (86%)	-0.08	1 (0%) 92 95	20, 39, 56, 73	2 (0%)
1	B	248/288 (86%)	0.01	2 (0%) 86 89	26, 40, 58, 70	1 (0%)
2	C	248/288 (86%)	-0.04	2 (0%) 86 89	25, 40, 58, 74	2 (0%)
2	D	248/288 (86%)	-0.04	6 (2%) 59 66	21, 39, 58, 78	2 (0%)
All	All	993/1152 (86%)	-0.04	11 (1%) 80 85	20, 40, 58, 78	7 (0%)

All (11) RSRZ outliers are listed below:

Mol	Chain	Res	Type	RSRZ
1	B	211	VAL	4.6
2	D	211	VAL	4.0
2	D	212	ALA	3.7
2	D	216	GLU	2.8
2	C	57	VAL	2.7
2	C	2	GLU	2.7
1	A	141	ARG	2.4
2	D	227	LEU	2.3
1	B	230	ARG	2.2
2	D	213	MET	2.1
2	D	215	GLU	2.0

6.2 Non-standard residues in protein, DNA, RNA chains [i](#)

In the following table, the Atoms column lists the number of modelled atoms in the group and the number defined in the chemical component dictionary. The B-factors column lists the minimum, median, 95th percentile and maximum values of B factors of atoms in the group. The column labelled ‘Q< 0.9’ lists the number of atoms with occupancy less than 0.9.

Mol	Type	Chain	Res	Atoms	RSCC	RSR	B-factors(Å ²)	Q<0.9
2	CSX	D	168	7/8	0.88	0.13	37,39,39,40	1

Continued on next page...

Continued from previous page...

Mol	Type	Chain	Res	Atoms	RSCC	RSR	B-factors(\AA^2)	Q<0.9
2	CSX	C	168[B]	7/8	0.90	0.12	36,38,39,39	2
2	CSX	C	168[A]	7/8	0.90	0.12	36,38,39,39	2

6.3 Carbohydrates [i](#)

There are no monosaccharides in this entry.

6.4 Ligands [i](#)

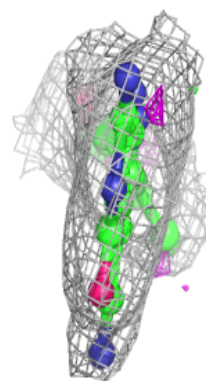
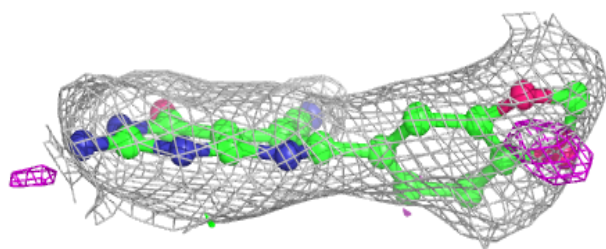
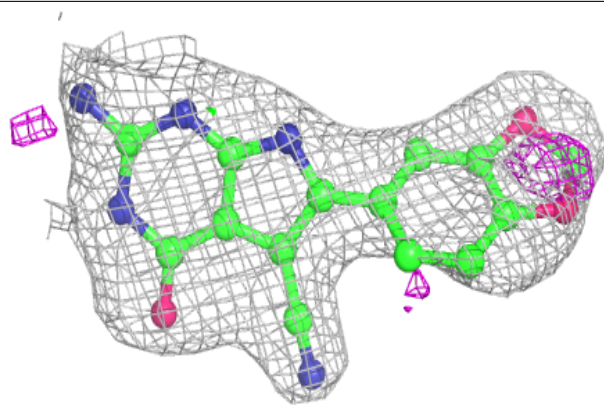
In the following table, the Atoms column lists the number of modelled atoms in the group and the number defined in the chemical component dictionary. The B-factors column lists the minimum, median, 95th percentile and maximum values of B factors of atoms in the group. The column labelled 'Q< 0.9' lists the number of atoms with occupancy less than 0.9.

Mol	Type	Chain	Res	Atoms	RSCC	RSR	B-factors(\AA^2)	Q<0.9
4	AX1	D	270	22/22	0.86	0.16	45,47,53,53	0
4	AX1	B	270	22/22	0.89	0.16	34,39,43,44	0
4	AX1	A	270	22/22	0.92	0.15	40,43,51,53	0
4	AX1	C	270	22/22	0.94	0.13	33,36,44,45	0
3	NAP	D	269	48/48	0.95	0.13	20,38,44,47	0
3	NAP	C	269	48/48	0.96	0.11	18,40,47,50	0
3	NAP	B	269	48/48	0.96	0.11	12,35,42,49	0
3	NAP	A	269	48/48	0.97	0.11	10,40,45,50	0

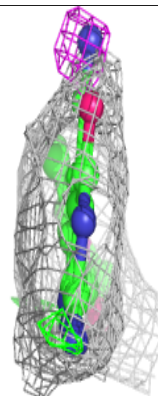
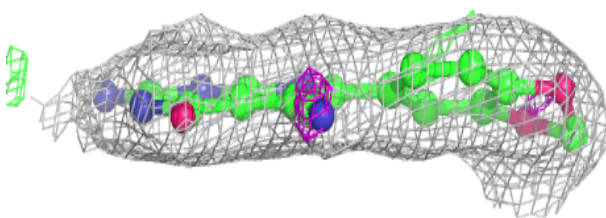
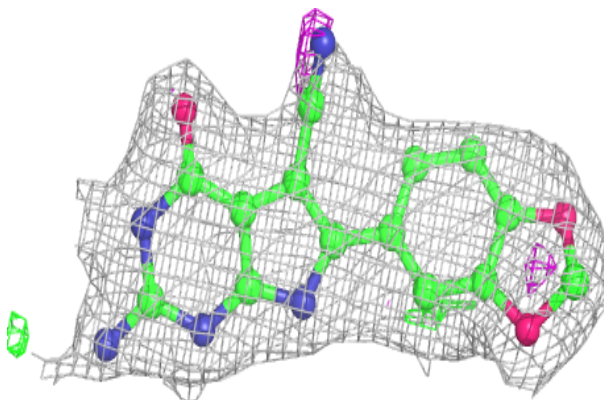
The following is a graphical depiction of the model fit to experimental electron density of all instances of the Ligand of Interest. In addition, ligands with molecular weight > 250 and outliers as shown on the geometry validation Tables will also be included. Each fit is shown from different orientation to approximate a three-dimensional view.

Electron density around AX1 D 270:

$2mF_o-DF_c$ (at 0.7 rmsd) in gray
 mF_o-DF_c (at 3 rmsd) in purple (negative)
and green (positive)

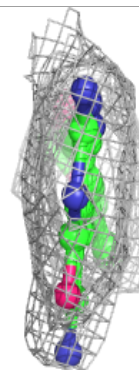
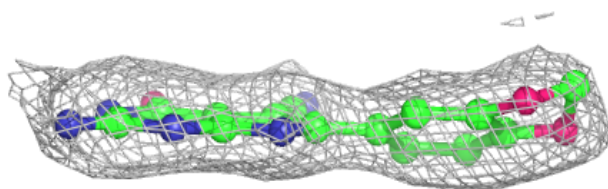
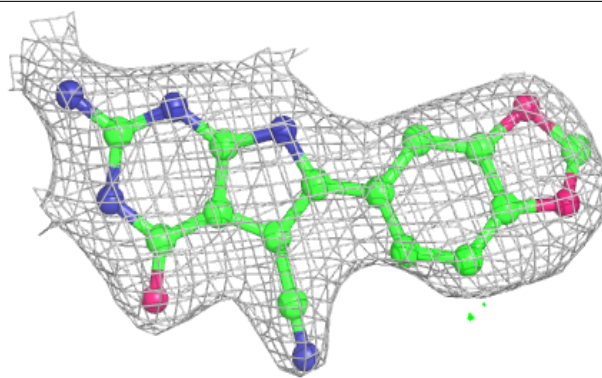
**Electron density around AX1 B 270:**

$2mF_o-DF_c$ (at 0.7 rmsd) in gray
 mF_o-DF_c (at 3 rmsd) in purple (negative)
and green (positive)

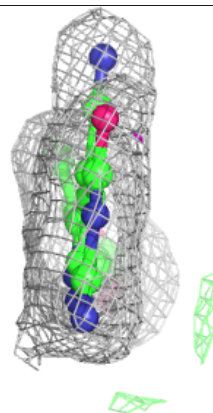
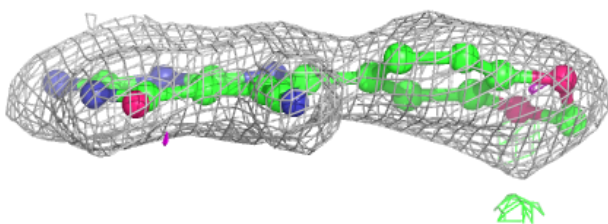
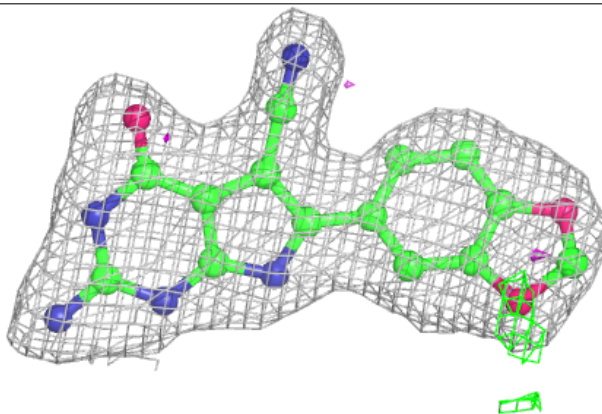


Electron density around AX1 A 270:

$2mF_o-DF_c$ (at 0.7 rmsd) in gray
 mF_o-DF_c (at 3 rmsd) in purple (negative)
and green (positive)

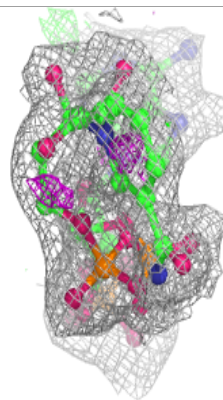
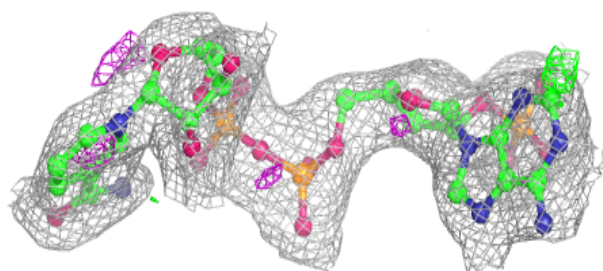
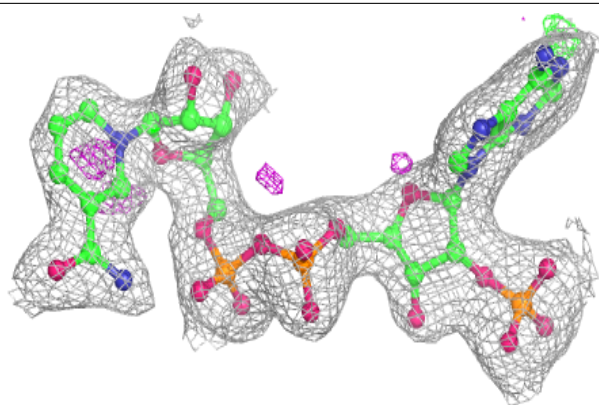
**Electron density around AX1 C 270:**

$2mF_o-DF_c$ (at 0.7 rmsd) in gray
 mF_o-DF_c (at 3 rmsd) in purple (negative)
and green (positive)

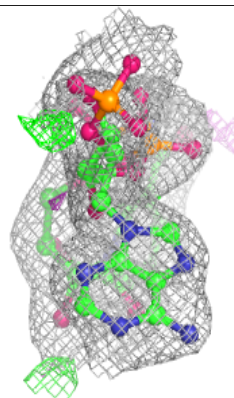
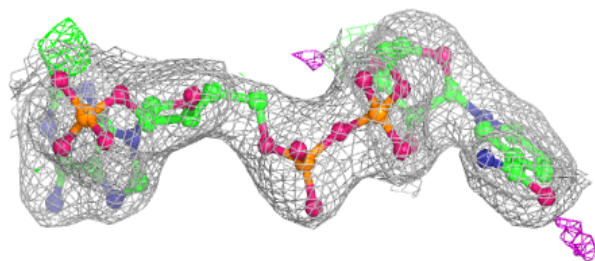
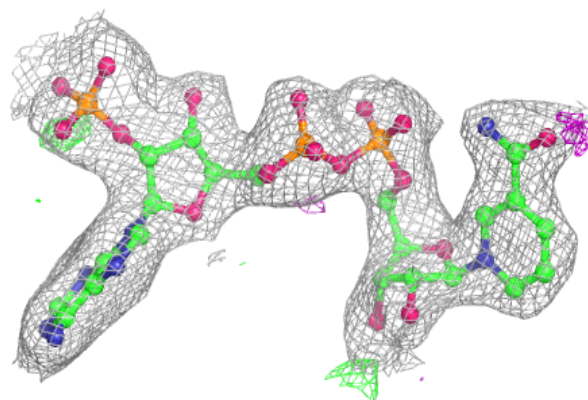


Electron density around NAP D 269:

$2mF_o-DF_c$ (at 0.7 rmsd) in gray
 mF_o-DF_c (at 3 rmsd) in purple (negative)
and green (positive)

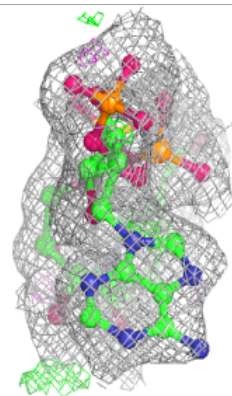
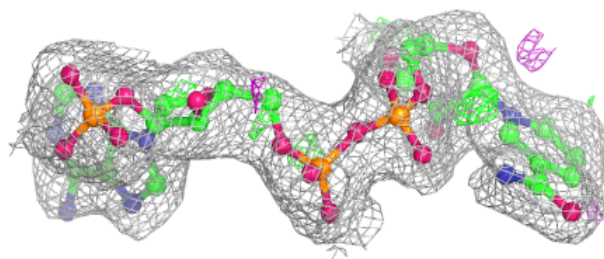
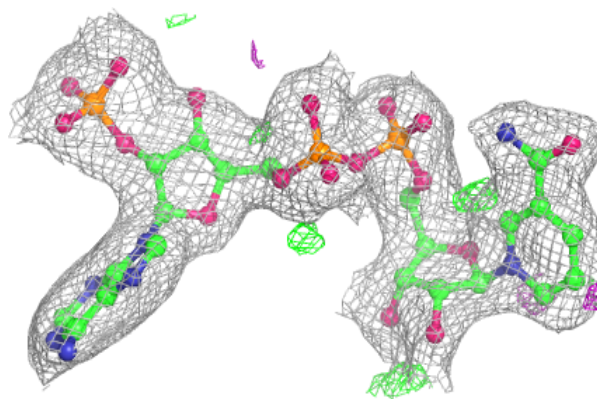
**Electron density around NAP C 269:**

$2mF_o-DF_c$ (at 0.7 rmsd) in gray
 mF_o-DF_c (at 3 rmsd) in purple (negative)
and green (positive)

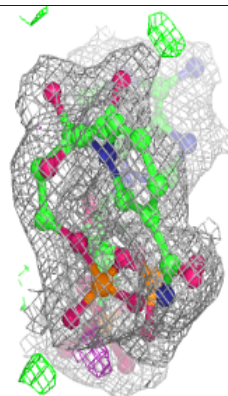
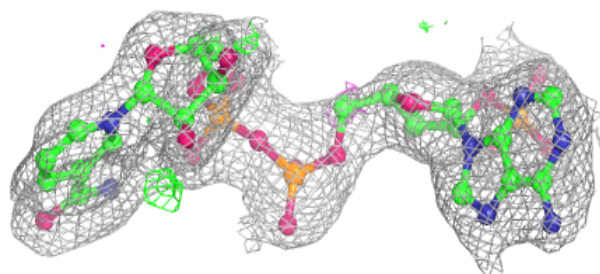
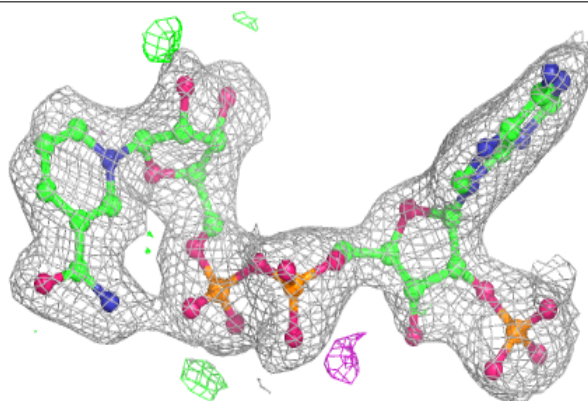


Electron density around NAP B 269:

$2mF_o-DF_c$ (at 0.7 rmsd) in gray
 mF_o-DF_c (at 3 rmsd) in purple (negative)
and green (positive)

**Electron density around NAP A 269:**

$2mF_o-DF_c$ (at 0.7 rmsd) in gray
 mF_o-DF_c (at 3 rmsd) in purple (negative)
and green (positive)



6.5 Other polymers [i](#)

There are no such residues in this entry.