



# Full wwPDB X-ray Structure Validation Report ⓘ

Jan 2, 2024 – 02:59 pm GMT

PDB ID : 5JQB  
Title : Crystal structure of Ebola glycoprotein in complex with ibuprofen  
Authors : Zhao, Y.; Ren, J.; Stuart, D.I.  
Deposited on : 2016-05-04  
Resolution : 2.68 Å(reported)

This is a Full wwPDB X-ray Structure Validation Report for a publicly released PDB entry.

We welcome your comments at [validation@mail.wwpdb.org](mailto:validation@mail.wwpdb.org)

A user guide is available at

<https://www.wwpdb.org/validation/2017/XrayValidationReportHelp>

with specific help available everywhere you see the ⓘ symbol.

The types of validation reports are described at

<http://www.wwpdb.org/validation/2017/FAQs#types>.

---

The following versions of software and data (see [references ⓘ](#)) were used in the production of this report:

MolProbity : 4.02b-467  
Mogul : 1.8.4, CSD as541be (2020)  
Xtriage (Phenix) : 1.13  
EDS : 2.36  
Percentile statistics : 20191225.v01 (using entries in the PDB archive December 25th 2019)  
Refmac : 5.8.0158  
CCP4 : 7.0.044 (Gargrove)  
Ideal geometry (proteins) : Engh & Huber (2001)  
Ideal geometry (DNA, RNA) : Parkinson et al. (1996)  
Validation Pipeline (wwPDB-VP) : 2.36

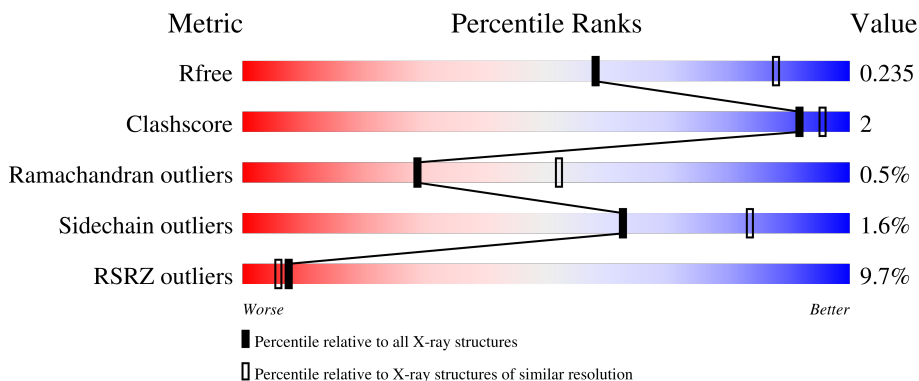
# 1 Overall quality at a glance

The following experimental techniques were used to determine the structure:

*X-RAY DIFFRACTION*

The reported resolution of this entry is 2.68 Å.

Percentile scores (ranging between 0-100) for global validation metrics of the entry are shown in the following graphic. The table shows the number of entries on which the scores are based.



Metric	Whole archive (#Entries)	Similar resolution (#Entries, resolution range(Å))
$R_{free}$	130704	3863 (2.70-2.66)
Clashscore	141614	4210 (2.70-2.66)
Ramachandran outliers	138981	4141 (2.70-2.66)
Sidechain outliers	138945	4141 (2.70-2.66)
RSRZ outliers	127900	3780 (2.70-2.66)

The table below summarises the geometric issues observed across the polymeric chains and their fit to the electron density. The red, orange, yellow and green segments of the lower bar indicate the fraction of residues that contain outliers for  $\geq 3$ , 2, 1 and 0 types of geometric quality criteria respectively. A grey segment represents the fraction of residues that are not modelled. The numeric value for each fraction is indicated below the corresponding segment, with a dot representing fractions  $\leq 5\%$ . The upper red bar (where present) indicates the fraction of residues that have poor fit to the electron density. The numeric value is given above the bar.

Mol	Chain	Length	Quality of chain
1	A	330	 5% 74% 22%
2	B	168	 13% 73% 5% 22%
3	C	3	 33% 67%

The following table lists non-polymeric compounds, carbohydrate monomers and non-standard residues in protein, DNA, RNA chains that are outliers for geometric or electron-density-fit criteria:

Mol	Type	Chain	Res	Chirality	Geometry	Clashes	Electron density
3	BMA	C	3	-	-	-	X
4	NAG	A	602	-	-	-	X

## 2 Entry composition [i](#)

There are 7 unique types of molecules in this entry. The entry contains 3238 atoms, of which 0 are hydrogens and 0 are deuteriums.

In the tables below, the ZeroOcc column contains the number of atoms modelled with zero occupancy, the AltConf column contains the number of residues with at least one atom in alternate conformation and the Trace column contains the number of residues modelled with at most 2 atoms.

- Molecule 1 is a protein called Envelope glycoprotein 1,Envelope glycoprotein 1,Envelope glycoprotein 1.

Mol	Chain	Residues	Atoms					ZeroOcc	AltConf	Trace
			Total	C	N	O	S			
1	A	257	1985	1266	334	380	5	0	0	0

There are 5 discrepancies between the modelled and reference sequences:

Chain	Residue	Modelled	Actual	Comment	Reference
A	28	GLU	-	expression tag	UNP Q05320
A	29	THR	-	expression tag	UNP Q05320
A	30	GLY	-	expression tag	UNP Q05320
A	31	ARG	-	expression tag	UNP Q05320
A	42	ALA	THR	engineered mutation	UNP Q05320

- Molecule 2 is a protein called Envelope glycoprotein 2.

Mol	Chain	Residues	Atoms					ZeroOcc	AltConf	Trace
			Total	C	N	O	S			
2	B	131	1040	663	179	192	6	0	0	0

There are 37 discrepancies between the modelled and reference sequences:

Chain	Residue	Modelled	Actual	Comment	Reference
B	633	GLY	-	expression tag	UNP Q05320
B	634	SER	-	expression tag	UNP Q05320
B	635	GLY	-	expression tag	UNP Q05320
B	636	TYR	-	expression tag	UNP Q05320
B	637	ILE	-	expression tag	UNP Q05320
B	638	PRO	-	expression tag	UNP Q05320
B	639	GLU	-	expression tag	UNP Q05320
B	640	ALA	-	expression tag	UNP Q05320
B	641	PRO	-	expression tag	UNP Q05320
B	642	ARG	-	expression tag	UNP Q05320

*Continued on next page...*

Continued from previous page...

Chain	Residue	Modelled	Actual	Comment	Reference
B	643	ASP	-	expression tag	UNP Q05320
B	644	GLY	-	expression tag	UNP Q05320
B	645	GLN	-	expression tag	UNP Q05320
B	646	ALA	-	expression tag	UNP Q05320
B	647	TYR	-	expression tag	UNP Q05320
B	648	VAL	-	expression tag	UNP Q05320
B	649	ARG	-	expression tag	UNP Q05320
B	650	LYS	-	expression tag	UNP Q05320
B	651	ASP	-	expression tag	UNP Q05320
B	652	GLY	-	expression tag	UNP Q05320
B	653	GLU	-	expression tag	UNP Q05320
B	654	TRP	-	expression tag	UNP Q05320
B	655	VAL	-	expression tag	UNP Q05320
B	656	LEU	-	expression tag	UNP Q05320
B	657	LEU	-	expression tag	UNP Q05320
B	658	SER	-	expression tag	UNP Q05320
B	659	THR	-	expression tag	UNP Q05320
B	660	PHE	-	expression tag	UNP Q05320
B	661	LEU	-	expression tag	UNP Q05320
B	662	GLY	-	expression tag	UNP Q05320
B	663	THR	-	expression tag	UNP Q05320
B	664	HIS	-	expression tag	UNP Q05320
B	665	HIS	-	expression tag	UNP Q05320
B	666	HIS	-	expression tag	UNP Q05320
B	667	HIS	-	expression tag	UNP Q05320
B	668	HIS	-	expression tag	UNP Q05320
B	669	HIS	-	expression tag	UNP Q05320

- Molecule 3 is an oligosaccharide called beta-D-mannopyranose-(1-4)-2-acetamido-2-deoxy-beta-D-glucopyranose-(1-4)-2-acetamido-2-deoxy-beta-D-glucopyranose.



Mol	Chain	Residues	Atoms				ZeroOcc	AltConf	Trace
			Total	C	N	O			
3	C	3	39	22	2	15	0	0	0

- Molecule 4 is 2-acetamido-2-deoxy-beta-D-glucopyranose (three-letter code: NAG) (formula: C<sub>8</sub>H<sub>15</sub>NO<sub>6</sub>).



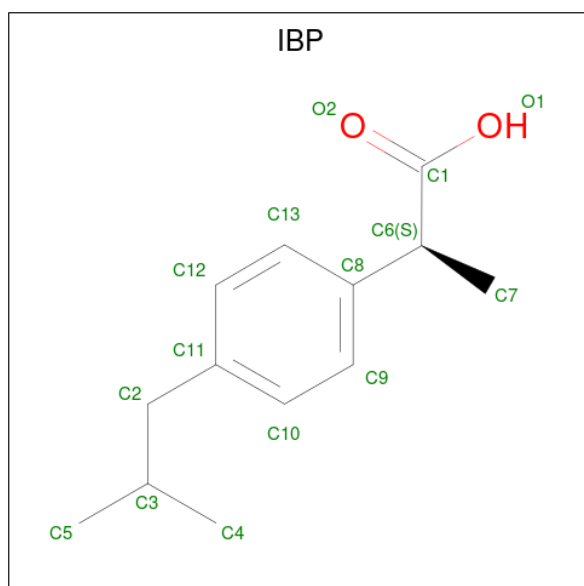
Mol	Chain	Residues	Atoms				ZeroOcc	AltConf
			Total	C	N	O		
4	A	1	Total	C	N	O	0	0
			14	8	1	5		
4	A	1	Total	C	N	O	0	0
			14	8	1	5		
4	A	1	Total	C	N	O	0	0
			14	8	1	5		
4	A	1	Total	C	N	O	0	0
			14	8	1	5		

- Molecule 5 is GLYCEROL (three-letter code: GOL) (formula:  $C_3H_8O_3$ ).



Mol	Chain	Residues	Atoms	ZeroOcc	AltConf
5	A	1	Total C O 6 3 3	0	0
5	A	1	Total C O 6 3 3	0	0
5	A	1	Total C O 6 3 3	0	0
5	B	1	Total C O 6 3 3	0	0
5	B	1	Total C O 6 3 3	0	0

- Molecule 6 is IBUPROFEN (three-letter code: IBP) (formula: C<sub>13</sub>H<sub>18</sub>O<sub>2</sub>).



Mol	Chain	Residues	Atoms	ZeroOcc	AltConf
6	B	1	Total C O 15 13 2	0	0

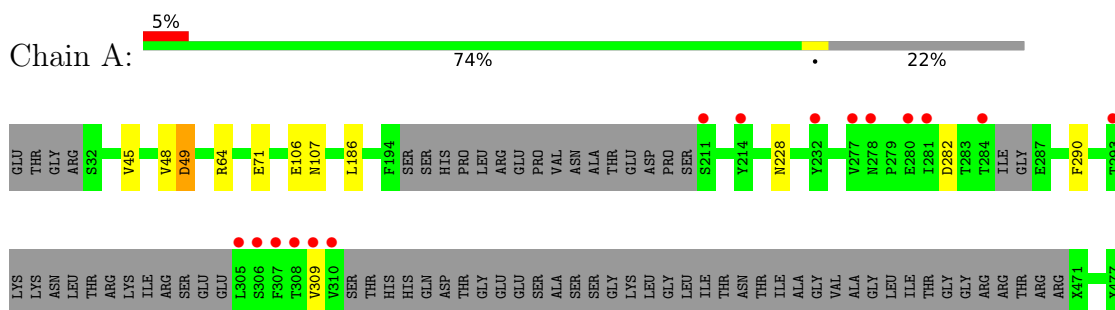
- Molecule 7 is water.

Mol	Chain	Residues	Atoms	ZeroOcc	AltConf
7	A	40	Total O 40 40	0	0
7	B	33	Total O 33 33	0	0

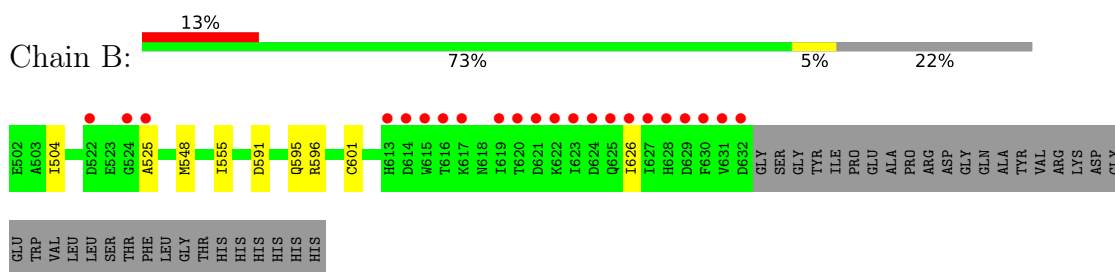
### 3 Residue-property plots [i](#)

These plots are drawn for all protein, RNA, DNA and oligosaccharide chains in the entry. The first graphic for a chain summarises the proportions of the various outlier classes displayed in the second graphic. The second graphic shows the sequence view annotated by issues in geometry and electron density. Residues are color-coded according to the number of geometric quality criteria for which they contain at least one outlier: green = 0, yellow = 1, orange = 2 and red = 3 or more. A red dot above a residue indicates a poor fit to the electron density ( $RSRZ > 2$ ). Stretches of 2 or more consecutive residues without any outlier are shown as a green connector. Residues present in the sample, but not in the model, are shown in grey.

- Molecule 1: Envelope glycoprotein 1,Envelope glycoprotein 1,Envelope glycoprotein 1



- Molecule 2: Envelope glycoprotein 2



- Molecule 3: beta-D-mannopyranose-(1-4)-2-acetamido-2-deoxy-beta-D-glucopyranose-(1-4)-2-acetamido-2-deoxy-beta-D-glucopyranose





## 4 Data and refinement statistics

Property	Value	Source
Space group	H 3 2	Depositor
Cell constants a, b, c, $\alpha$ , $\beta$ , $\gamma$	113.76Å 113.76Å 306.15Å 90.00° 90.00° 120.00°	Depositor
Resolution (Å)	82.84 – 2.68 82.84 – 2.68	Depositor EDS
% Data completeness (in resolution range)	99.9 (82.84-2.68) 99.9 (82.84-2.68)	Depositor EDS
$R_{merge}$	0.13	Depositor
$R_{sym}$	(Not available)	Depositor
$\langle I/\sigma(I) \rangle$ <sup>1</sup>	1.67 (at 2.69Å)	Xtrriage
Refinement program	REFMAC 5.8.0135	Depositor
R, $R_{free}$	0.199 , 0.234 0.200 , 0.235	Depositor DCC
$R_{free}$ test set	1107 reflections (5.07%)	wwPDB-VP
Wilson B-factor (Å <sup>2</sup> )	59.3	Xtrriage
Anisotropy	0.398	Xtrriage
Bulk solvent $k_{sol}$ (e/Å <sup>3</sup> ), $B_{sol}$ (Å <sup>2</sup> )	0.35 , 50.2	EDS
L-test for twinning <sup>2</sup>	$\langle  L  \rangle = 0.49$ , $\langle L^2 \rangle = 0.32$	Xtrriage
Estimated twinning fraction	No twinning to report.	Xtrriage
$F_o, F_c$ correlation	0.94	EDS
Total number of atoms	3238	wwPDB-VP
Average B, all atoms (Å <sup>2</sup> )	74.0	wwPDB-VP

Xtrriage's analysis on translational NCS is as follows: *The largest off-origin peak in the Patterson function is 3.18% of the height of the origin peak. No significant pseudotranslation is detected.*

<sup>1</sup>Intensities estimated from amplitudes.

<sup>2</sup>Theoretical values of  $\langle |L| \rangle$ ,  $\langle L^2 \rangle$  for acentric reflections are 0.5, 0.333 respectively for untwinned datasets, and 0.375, 0.2 for perfectly twinned datasets.

## 5 Model quality

### 5.1 Standard geometry

Bond lengths and bond angles in the following residue types are not validated in this section: NAG, GOL, IBP, BMA

The Z score for a bond length (or angle) is the number of standard deviations the observed value is removed from the expected value. A bond length (or angle) with  $|Z| > 5$  is considered an outlier worth inspection. RMSZ is the root-mean-square of all Z scores of the bond lengths (or angles).

Mol	Chain	Bond lengths		Bond angles	
		RMSZ	# Z  >5	RMSZ	# Z  >5
1	A	0.39	0/1996	0.63	0/2714
2	B	0.40	0/1066	0.56	0/1453
All	All	0.39	0/3062	0.61	0/4167

There are no bond length outliers.

There are no bond angle outliers.

There are no chirality outliers.

There are no planarity outliers.

### 5.2 Too-close contacts

In the following table, the Non-H and H(model) columns list the number of non-hydrogen atoms and hydrogen atoms in the chain respectively. The H(added) column lists the number of hydrogen atoms added and optimized by MolProbity. The Clashes column lists the number of clashes within the asymmetric unit, whereas Symm-Clashes lists symmetry-related clashes.

Mol	Chain	Non-H	H(model)	H(added)	Clashes	Symm-Clashes
1	A	1985	0	1881	8	0
2	B	1040	0	1003	6	0
3	C	39	0	34	0	0
4	A	56	0	52	0	0
5	A	18	0	24	0	0
5	B	12	0	16	0	0
6	B	15	0	17	0	0
7	A	40	0	0	0	0
7	B	33	0	0	1	0
All	All	3238	0	3027	10	0

The all-atom clashscore is defined as the number of clashes found per 1000 atoms (including

hydrogen atoms). The all-atom clashscore for this structure is 2.

All (10) close contacts within the same asymmetric unit are listed below, sorted by their clash magnitude.

Atom-1	Atom-2	Interatomic distance (Å)	Clash overlap (Å)
1:A:45:VAL:HG23	2:B:504:ILE:HD13	1.85	0.58
1:A:106:GLU:HG3	1:A:290:PHE:CD1	2.39	0.57
1:A:106:GLU:HG3	1:A:290:PHE:CG	2.40	0.56
1:A:49:ASP:HA	2:B:595:GLN:HG3	1.92	0.50
1:A:64:ARG:HG3	1:A:186:LEU:HD11	1.96	0.47
1:A:48:VAL:HG21	2:B:591:ASP:HB3	2.00	0.44
2:B:548:MET:HG2	2:B:555:ILE:HD11	2.00	0.43
2:B:596:ARG:NE	7:B:801:HOH:O	2.52	0.42
1:A:71:GLU:OE2	1:A:107:ASN:N	2.45	0.42
1:A:45:VAL:HG23	2:B:504:ILE:CD1	2.49	0.42

There are no symmetry-related clashes.

## 5.3 Torsion angles [i](#)

### 5.3.1 Protein backbone [i](#)

In the following table, the Percentiles column shows the percent Ramachandran outliers of the chain as a percentile score with respect to all X-ray entries followed by that with respect to entries of similar resolution.

The Analysed column shows the number of residues for which the backbone conformation was analysed, and the total number of residues.

Mol	Chain	Analysed	Favoured	Allowed	Outliers	Percentiles	
1	A	242/330 (73%)	235 (97%)	7 (3%)	0	100	100
2	B	129/168 (77%)	119 (92%)	8 (6%)	2 (2%)	9	22
All	All	371/498 (74%)	354 (95%)	15 (4%)	2 (0%)	29	52

All (2) Ramachandran outliers are listed below:

Mol	Chain	Res	Type
2	B	525	ALA
2	B	626	ILE

### 5.3.2 Protein sidechains [i](#)

In the following table, the Percentiles column shows the percent sidechain outliers of the chain as a percentile score with respect to all X-ray entries followed by that with respect to entries of similar resolution.

The Analysed column shows the number of residues for which the sidechain conformation was analysed, and the total number of residues.

Mol	Chain	Analysed	Rotameric	Outliers	Percentiles	
1	A	209/273 (77%)	205 (98%)	4 (2%)	57	80
2	B	110/140 (79%)	109 (99%)	1 (1%)	78	91
All	All	319/413 (77%)	314 (98%)	5 (2%)	62	83

All (5) residues with a non-rotameric sidechain are listed below:

Mol	Chain	Res	Type
1	A	49	ASP
1	A	228	ASN
1	A	282	ASP
1	A	309	VAL
2	B	601	CYS

Sometimes sidechains can be flipped to improve hydrogen bonding and reduce clashes. All (3) such sidechains are listed below:

Mol	Chain	Res	Type
1	A	73	ASN
1	A	139	HIS
2	B	508	GLN

### 5.3.3 RNA [i](#)

There are no RNA molecules in this entry.

## 5.4 Non-standard residues in protein, DNA, RNA chains [i](#)

There are no non-standard protein/DNA/RNA residues in this entry.

## 5.5 Carbohydrates [i](#)

3 monosaccharides are modelled in this entry.

In the following table, the Counts columns list the number of bonds (or angles) for which Mogul statistics could be retrieved, the number of bonds (or angles) that are observed in the model and the number of bonds (or angles) that are defined in the Chemical Component Dictionary. The Link column lists molecule types, if any, to which the group is linked. The Z score for a bond length (or angle) is the number of standard deviations the observed value is removed from the expected value. A bond length (or angle) with  $|Z| > 2$  is considered an outlier worth inspection. RMSZ is the root-mean-square of all Z scores of the bond lengths (or angles).

Mol	Type	Chain	Res	Link	Bond lengths			Bond angles		
					Counts	RMSZ	$\# Z  > 2$	Counts	RMSZ	$\# Z  > 2$
3	NAG	C	1	2,3	14,14,15	0.30	0	17,19,21	0.94	1 (5%)
3	NAG	C	2	3	14,14,15	0.38	0	17,19,21	0.89	1 (5%)
3	BMA	C	3	3	11,11,12	0.36	0	15,15,17	0.67	0

In the following table, the Chirals column lists the number of chiral outliers, the number of chiral centers analysed, the number of these observed in the model and the number defined in the Chemical Component Dictionary. Similar counts are reported in the Torsion and Rings columns. '-' means no outliers of that kind were identified.

Mol	Type	Chain	Res	Link	Chirals	Torsions	Rings
3	NAG	C	1	2,3	-	0/6/23/26	0/1/1/1
3	NAG	C	2	3	-	0/6/23/26	0/1/1/1
3	BMA	C	3	3	-	0/2/19/22	0/1/1/1

There are no bond length outliers.

All (2) bond angle outliers are listed below:

Mol	Chain	Res	Type	Atoms	Z	Observed( $^{\circ}$ )	Ideal( $^{\circ}$ )
3	C	2	NAG	C1-O5-C5	2.78	115.96	112.19
3	C	1	NAG	O5-C1-C2	-2.06	108.04	111.29

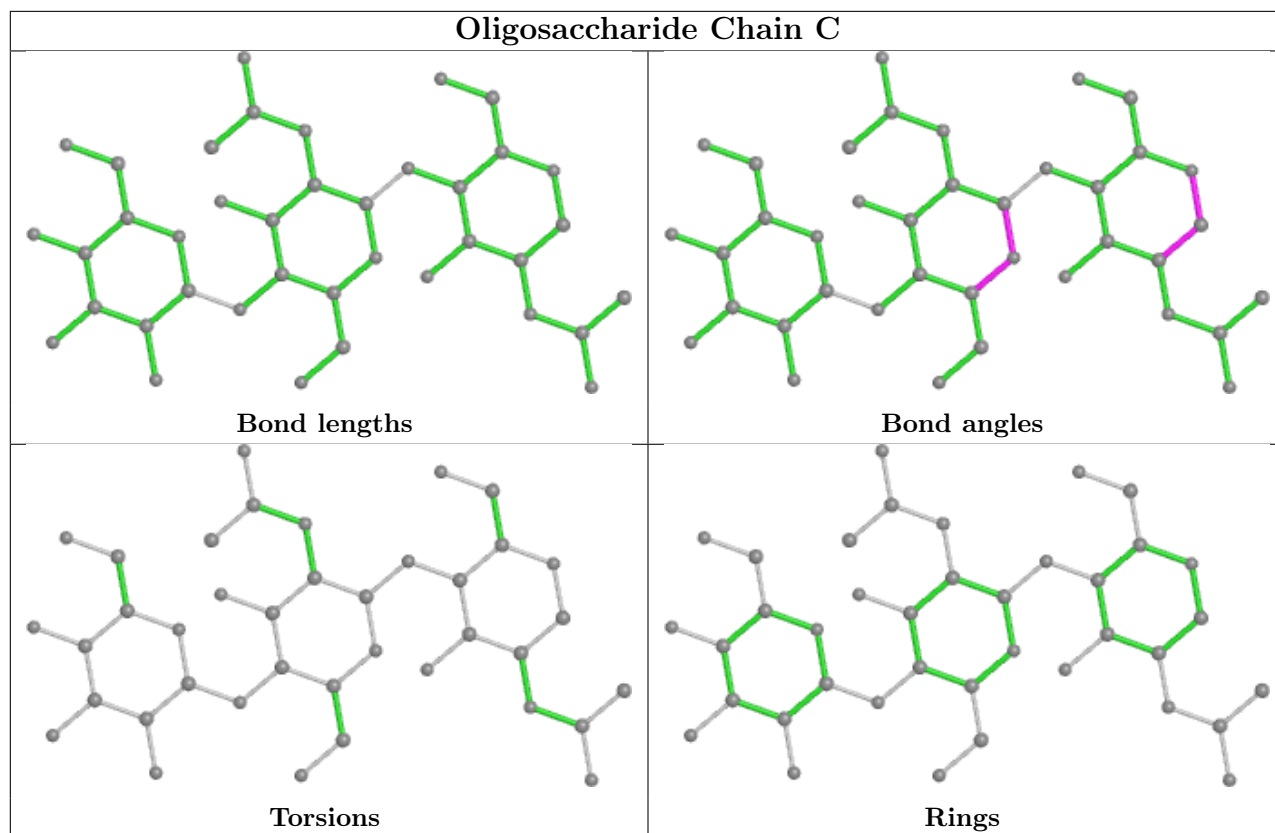
There are no chirality outliers.

There are no torsion outliers.

There are no ring outliers.

No monomer is involved in short contacts.

The following is a two-dimensional graphical depiction of Mogul quality analysis of bond lengths, bond angles, torsion angles, and ring geometry for oligosaccharide.



## 5.6 Ligand geometry [i](#)

10 ligands are modelled in this entry.

In the following table, the Counts columns list the number of bonds (or angles) for which Mogul statistics could be retrieved, the number of bonds (or angles) that are observed in the model and the number of bonds (or angles) that are defined in the Chemical Component Dictionary. The Link column lists molecule types, if any, to which the group is linked. The Z score for a bond length (or angle) is the number of standard deviations the observed value is removed from the expected value. A bond length (or angle) with  $|Z| > 2$  is considered an outlier worth inspection. RMSZ is the root-mean-square of all Z scores of the bond lengths (or angles).

Mol	Type	Chain	Res	Link	Bond lengths			Bond angles		
					Counts	RMSZ	$\# Z  > 2$	Counts	RMSZ	$\# Z  > 2$
6	IBP	B	706	-	15,15,15	0.90	1 (6%)	20,20,20	0.90	0
5	GOL	B	701	-	5,5,5	0.25	0	5,5,5	0.32	0
4	NAG	A	602	1	14,14,15	0.39	0	17,19,21	1.01	0
4	NAG	A	604	1	14,14,15	0.57	0	17,19,21	2.39	3 (17%)
5	GOL	B	702	-	5,5,5	0.31	0	5,5,5	0.19	0
5	GOL	A	607	-	5,5,5	0.38	0	5,5,5	0.25	0
5	GOL	A	606	-	5,5,5	0.40	0	5,5,5	0.23	0
4	NAG	A	601	1	14,14,15	0.23	0	17,19,21	0.79	0
4	NAG	A	603	1	14,14,15	0.29	0	17,19,21	0.76	0

Mol	Type	Chain	Res	Link	Bond lengths			Bond angles		
					Counts	RMSZ	# Z  > 2	Counts	RMSZ	# Z  > 2
5	GOL	A	605	-	5,5,5	0.36	0	5,5,5	0.33	0

In the following table, the Chirals column lists the number of chiral outliers, the number of chiral centers analysed, the number of these observed in the model and the number defined in the Chemical Component Dictionary. Similar counts are reported in the Torsion and Rings columns. '-' means no outliers of that kind were identified.

Mol	Type	Chain	Res	Link	Chirals	Torsions	Rings
6	IBP	B	706	-	-	2/12/12/12	0/1/1/1
5	GOL	B	701	-	-	0/4/4/4	-
4	NAG	A	602	1	-	0/6/23/26	0/1/1/1
4	NAG	A	604	1	-	0/6/23/26	0/1/1/1
5	GOL	B	702	-	-	1/4/4/4	-
5	GOL	A	607	-	-	4/4/4/4	-
5	GOL	A	606	-	-	4/4/4/4	-
4	NAG	A	601	1	-	0/6/23/26	0/1/1/1
4	NAG	A	603	1	-	0/6/23/26	0/1/1/1
5	GOL	A	605	-	-	2/4/4/4	-

All (1) bond length outliers are listed below:

Mol	Chain	Res	Type	Atoms	Z	Observed(Å)	Ideal(Å)
6	B	706	IBP	C8-C6	-2.10	1.49	1.52

All (3) bond angle outliers are listed below:

Mol	Chain	Res	Type	Atoms	Z	Observed(°)	Ideal(°)
4	A	604	NAG	C1-O5-C5	8.79	124.10	112.19
4	A	604	NAG	O5-C1-C2	2.45	115.16	111.29
4	A	604	NAG	C4-C3-C2	-2.23	107.74	111.02

There are no chirality outliers.

All (13) torsion outliers are listed below:

Mol	Chain	Res	Type	Atoms
5	A	605	GOL	O1-C1-C2-C3
5	A	606	GOL	O1-C1-C2-C3
5	A	607	GOL	C1-C2-C3-O3
6	B	706	IBP	C12-C11-C2-C3
5	A	606	GOL	O1-C1-C2-O2

*Continued on next page...*

*Continued from previous page...*

Mol	Chain	Res	Type	Atoms
6	B	706	IBP	C10-C11-C2-C3
5	A	606	GOL	C1-C2-C3-O3
5	A	607	GOL	O1-C1-C2-C3
5	A	607	GOL	O2-C2-C3-O3
5	A	607	GOL	O1-C1-C2-O2
5	A	605	GOL	O1-C1-C2-O2
5	A	606	GOL	O2-C2-C3-O3
5	B	702	GOL	O1-C1-C2-O2

There are no ring outliers.

No monomer is involved in short contacts.

## 5.7 Other polymers [i](#)

There are no such residues in this entry.

## 5.8 Polymer linkage issues [i](#)

There are no chain breaks in this entry.



## 6 Fit of model and data

### 6.1 Protein, DNA and RNA chains

In the following table, the column labelled ‘#RSRZ > 2’ contains the number (and percentage) of RSRZ outliers, followed by percent RSRZ outliers for the chain as percentile scores relative to all X-ray entries and entries of similar resolution. The OWAB column contains the minimum, median, 95<sup>th</sup> percentile and maximum values of the occupancy-weighted average B-factor per residue. The column labelled ‘Q < 0.9’ lists the number of (and percentage) of residues with an average occupancy less than 0.9.

Mol	Chain	Analysed	<RSRZ>	#RSRZ>2	OWAB(Å <sup>2</sup> )	Q<0.9
1	A	250/330 (75%)	0.44	15 (6%) 21 20	42, 63, 130, 145	0
2	B	131/168 (77%)	0.90	22 (16%) 1 1	46, 59, 159, 166	0
All	All	381/498 (76%)	0.60	37 (9%) 7 6	42, 62, 142, 166	0

All (37) RSRZ outliers are listed below:

Mol	Chain	Res	Type	RSRZ
2	B	615	TRP	6.9
2	B	619	ILE	6.5
2	B	626	ILE	6.5
2	B	627	ILE	6.3
2	B	613	HIS	6.0
2	B	630	PHE	5.5
1	A	307	PHE	5.5
2	B	620	THR	5.4
2	B	632	ASP	5.2
1	A	309	VAL	5.1
2	B	631	VAL	4.8
2	B	628	HIS	4.5
1	A	305	LEU	4.5
2	B	623	ILE	4.4
2	B	621	ASP	4.3
2	B	525	ALA	3.9
1	A	306	SER	3.9
2	B	616	THR	3.9
2	B	522	ASP	3.8
1	A	293	THR	3.8
1	A	284	THR	3.1
1	A	308	THR	3.1
2	B	625	GLN	3.0
2	B	622	LYS	3.0

*Continued on next page...*

*Continued from previous page...*

Mol	Chain	Res	Type	RSRZ
2	B	629	ASP	3.0
1	A	277	VAL	2.9
1	A	310	VAL	2.9
1	A	211	SER	2.8
1	A	281	ILE	2.8
2	B	617	LYS	2.6
2	B	614	ASP	2.6
1	A	280	GLU	2.6
1	A	278	ASN	2.4
1	A	232	TYR	2.3
2	B	524	GLY	2.2
2	B	624	ASP	2.2
1	A	214	TYR	2.1

## 6.2 Non-standard residues in protein, DNA, RNA chains [i](#)

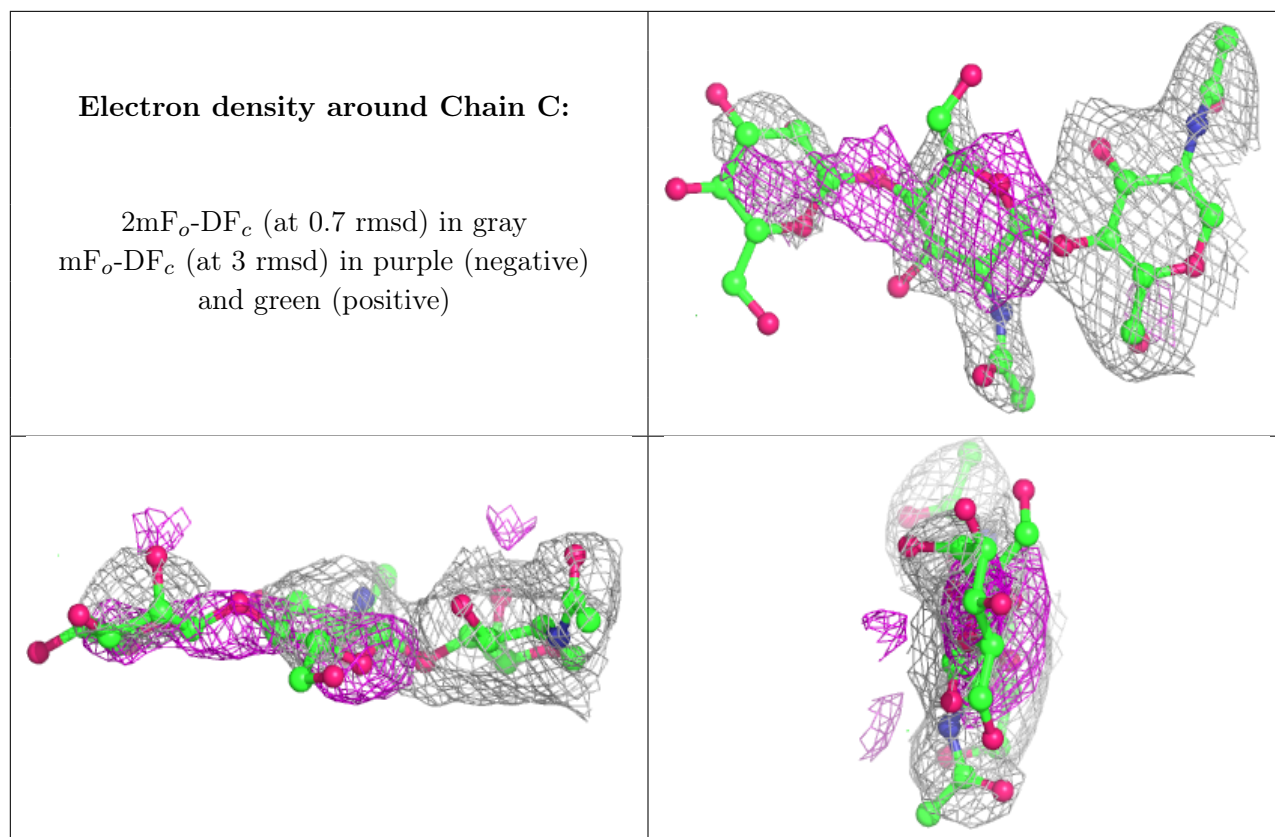
There are no non-standard protein/DNA/RNA residues in this entry.

## 6.3 Carbohydrates [i](#)

In the following table, the Atoms column lists the number of modelled atoms in the group and the number defined in the chemical component dictionary. The B-factors column lists the minimum, median, 95<sup>th</sup> percentile and maximum values of B factors of atoms in the group. The column labelled 'Q< 0.9' lists the number of atoms with occupancy less than 0.9.

Mol	Type	Chain	Res	Atoms	RSCC	RSR	B-factors(Å <sup>2</sup> )	Q<0.9
3	BMA	C	3	11/12	0.64	0.66	130,134,137,138	0
3	NAG	C	2	14/15	0.80	0.53	97,104,113,124	0
3	NAG	C	1	14/15	0.96	0.19	54,57,63,79	0

The following is a graphical depiction of the model fit to experimental electron density for oligosaccharide. Each fit is shown from different orientation to approximate a three-dimensional view.



## 6.4 Ligands [i](#)

In the following table, the Atoms column lists the number of modelled atoms in the group and the number defined in the chemical component dictionary. The B-factors column lists the minimum, median, 95<sup>th</sup> percentile and maximum values of B factors of atoms in the group. The column labelled 'Q< 0.9' lists the number of atoms with occupancy less than 0.9.

Mol	Type	Chain	Res	Atoms	RSCC	RSR	B-factors(Å <sup>2</sup> )	Q<0.9
4	NAG	A	602	14/15	0.70	0.43	124,130,133,133	0
5	GOL	A	607	6/6	0.79	0.31	84,85,87,87	0
5	GOL	A	606	6/6	0.80	0.17	83,86,87,87	0
4	NAG	A	604	14/15	0.82	0.44	100,106,109,110	0
6	IBP	B	706	15/15	0.87	0.45	85,93,106,107	0
5	GOL	B	702	6/6	0.89	0.26	87,89,90,91	0
4	NAG	A	603	14/15	0.90	0.17	93,101,107,108	0
5	GOL	B	701	6/6	0.93	0.24	70,71,72,72	0
5	GOL	A	605	6/6	0.96	0.37	56,58,59,60	0
4	NAG	A	601	14/15	0.96	0.16	69,74,77,78	0

## 6.5 Other polymers [i](#)

There are no such residues in this entry.