



wwPDB X-ray Structure Validation Summary Report ⓘ

Sep 11, 2023 – 03:10 AM EDT

PDB ID : 4K7G
Title : Crystal structure of a 3-hydroxyproline dehydratase from agrobacterium vitis, target efi-506470, with bound pyrrole 2-carboxylate, ordered active site
Authors : Vetting, M.W.; Toro, R.; Bhosle, R.; Al Obaidi, N.F.; Morisco, L.L.; Wasserman, S.R.; Sojitra, S.; Stead, M.; Washington, E.; Scott Glenn, A.; Chowdhury, S.; Evans, B.; Hammonds, J.; Hillerich, B.; Love, J.; Seidel, R.D.; Imker, H.J.; Gerlt, J.A.; Almo, S.C.; Enzyme Function Initiative (EFI)
Deposited on : 2013-04-17
Resolution : 2.00 Å(reported)

This is a wwPDB X-ray Structure Validation Summary Report for a publicly released PDB entry.

We welcome your comments at validation@mail.wwpdb.org

A user guide is available at

<https://www.wwpdb.org/validation/2017/XrayValidationReportHelp>

with specific help available everywhere you see the ⓘ symbol.

The types of validation reports are described at

<http://www.wwpdb.org/validation/2017/FAQs#types>.

The following versions of software and data (see [references ⓘ](#)) were used in the production of this report:

MolProbity : 4.02b-467
Mogul : 1.8.5 (274361), CSD as541be (2020)
Xtriage (Phenix) : 1.13
EDS : 2.35.1
Percentile statistics : 20191225.v01 (using entries in the PDB archive December 25th 2019)
Refmac : 5.8.0158
CCP4 : 7.0.044 (Gargrove)
Ideal geometry (proteins) : Engh & Huber (2001)
Ideal geometry (DNA, RNA) : Parkinson et al. (1996)

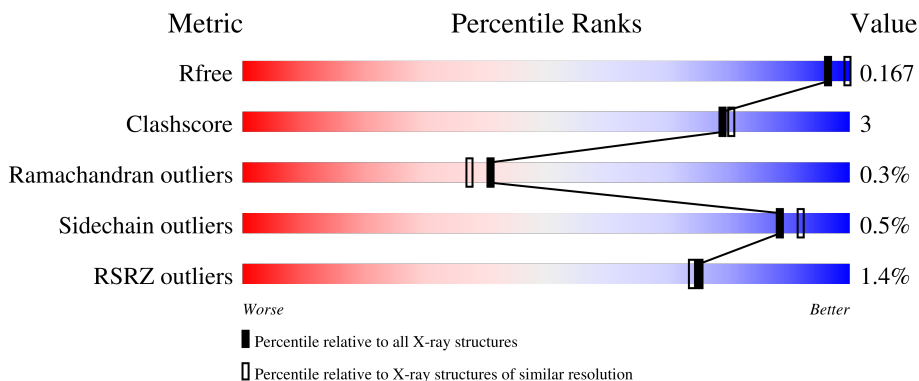
1 Overall quality at a glance

The following experimental techniques were used to determine the structure:

X-RAY DIFFRACTION

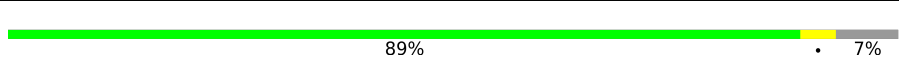
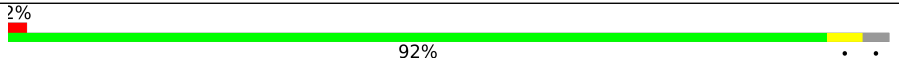
The reported resolution of this entry is 2.00 Å.

Percentile scores (ranging between 0-100) for global validation metrics of the entry are shown in the following graphic. The table shows the number of entries on which the scores are based.



Metric	Whole archive (#Entries)	Similar resolution (#Entries, resolution range(Å))
R_{free}	130704	8085 (2.00-2.00)
Clashscore	141614	9178 (2.00-2.00)
Ramachandran outliers	138981	9054 (2.00-2.00)
Sidechain outliers	138945	9053 (2.00-2.00)
RSRZ outliers	127900	7900 (2.00-2.00)

The table below summarises the geometric issues observed across the polymeric chains and their fit to the electron density. The red, orange, yellow and green segments of the lower bar indicate the fraction of residues that contain outliers for ≥ 3 , 2, 1 and 0 types of geometric quality criteria respectively. A grey segment represents the fraction of residues that are not modelled. The numeric value for each fraction is indicated below the corresponding segment, with a dot representing fractions $\leq 5\%$. The upper red bar (where present) indicates the fraction of residues that have poor fit to the electron density. The numeric value is given above the bar.

Mol	Chain	Length	Quality of chain
1	B	364	 89% 7%
1	D	364	 2% 92%

2 Entry composition [i](#)

There are 5 unique types of molecules in this entry. The entry contains 11146 atoms, of which 5163 are hydrogens and 0 are deuteriums.

In the tables below, the ZeroOcc column contains the number of atoms modelled with zero occupancy, the AltConf column contains the number of residues with at least one atom in alternate conformation and the Trace column contains the number of residues modelled with at most 2 atoms.

- Molecule 1 is a protein called 3-hydroxyproline dehydratase.

Mol	Chain	Residues	Atoms					ZeroOcc	AltConf	Trace	
			Total	C	H	N	O				S
1	B	338	5031	1584	2515	433	484	15	0	0	0
1	D	352	5274	1661	2635	454	508	16	0	2	0

There are 44 discrepancies between the modelled and reference sequences:

Chain	Residue	Modelled	Actual	Comment	Reference
B	-21	MET	-	expression tag	UNP B9K4G4
B	-20	HIS	-	expression tag	UNP B9K4G4
B	-19	HIS	-	expression tag	UNP B9K4G4
B	-18	HIS	-	expression tag	UNP B9K4G4
B	-17	HIS	-	expression tag	UNP B9K4G4
B	-16	HIS	-	expression tag	UNP B9K4G4
B	-15	HIS	-	expression tag	UNP B9K4G4
B	-14	SER	-	expression tag	UNP B9K4G4
B	-13	SER	-	expression tag	UNP B9K4G4
B	-12	GLY	-	expression tag	UNP B9K4G4
B	-11	VAL	-	expression tag	UNP B9K4G4
B	-10	ASP	-	expression tag	UNP B9K4G4
B	-9	LEU	-	expression tag	UNP B9K4G4
B	-8	GLY	-	expression tag	UNP B9K4G4
B	-7	THR	-	expression tag	UNP B9K4G4
B	-6	GLU	-	expression tag	UNP B9K4G4
B	-5	ASN	-	expression tag	UNP B9K4G4
B	-4	LEU	-	expression tag	UNP B9K4G4
B	-3	TYR	-	expression tag	UNP B9K4G4
B	-2	PHE	-	expression tag	UNP B9K4G4
B	-1	GLN	-	expression tag	UNP B9K4G4
B	0	SER	-	expression tag	UNP B9K4G4
D	-21	MET	-	expression tag	UNP B9K4G4
D	-20	HIS	-	expression tag	UNP B9K4G4
D	-19	HIS	-	expression tag	UNP B9K4G4

Continued on next page...

Continued from previous page...

Chain	Residue	Modelled	Actual	Comment	Reference
D	-18	HIS	-	expression tag	UNP B9K4G4
D	-17	HIS	-	expression tag	UNP B9K4G4
D	-16	HIS	-	expression tag	UNP B9K4G4
D	-15	HIS	-	expression tag	UNP B9K4G4
D	-14	SER	-	expression tag	UNP B9K4G4
D	-13	SER	-	expression tag	UNP B9K4G4
D	-12	GLY	-	expression tag	UNP B9K4G4
D	-11	VAL	-	expression tag	UNP B9K4G4
D	-10	ASP	-	expression tag	UNP B9K4G4
D	-9	LEU	-	expression tag	UNP B9K4G4
D	-8	GLY	-	expression tag	UNP B9K4G4
D	-7	THR	-	expression tag	UNP B9K4G4
D	-6	GLU	-	expression tag	UNP B9K4G4
D	-5	ASN	-	expression tag	UNP B9K4G4
D	-4	LEU	-	expression tag	UNP B9K4G4
D	-3	TYR	-	expression tag	UNP B9K4G4
D	-2	PHE	-	expression tag	UNP B9K4G4
D	-1	GLN	-	expression tag	UNP B9K4G4
D	0	SER	-	expression tag	UNP B9K4G4

- Molecule 2 is CITRIC ACID (three-letter code: CIT) (formula: C₆H₈O₇).



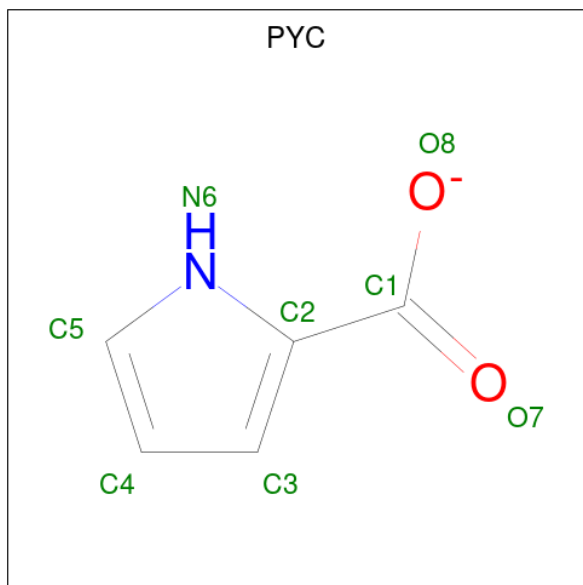
Mol	Chain	Residues	Atoms				ZeroOcc	AltConf
			Total	C	H	O		
2	B	1	18	6	5	7	0	0
2	B	1	18	6	5	7	0	0

- Molecule 3 is ACETATE ION (three-letter code: ACT) (formula: $C_2H_3O_2$).



Mol	Chain	Residues	Atoms				ZeroOcc	AltConf
			Total	C	H	O		
3	B	1	7	2	3	2	0	0

- Molecule 4 is PYRROLE-2-CARBOXYLATE (three-letter code: PYC) (formula: $C_5H_4NO_2$).



Mol	Chain	Residues	Atoms				ZeroOcc	AltConf
			Total	C	N	O		
4	B	1	8	5	1	2	0	0
4	D	1	8	5	1	2	0	0


- Molecule 5 is water.

Mol	Chain	Residues	Atoms		ZeroOcc	AltConf
5	B	433	Total 435	O 435	0	2
5	D	347	Total 347	O 347	0	0

3 Residue-property plots [i](#)

These plots are drawn for all protein, RNA, DNA and oligosaccharide chains in the entry. The first graphic for a chain summarises the proportions of the various outlier classes displayed in the second graphic. The second graphic shows the sequence view annotated by issues in geometry and electron density. Residues are color-coded according to the number of geometric quality criteria for which they contain at least one outlier: green = 0, yellow = 1, orange = 2 and red = 3 or more. A red dot above a residue indicates a poor fit to the electron density ($RSRZ > 2$). Stretches of 2 or more consecutive residues without any outlier are shown as a green connector. Residues present in the sample, but not in the model, are shown in grey.

- Molecule 1: 3-hydroxyproline dehydratase

Chain B:  89% 7%



- Molecule 1: 3-hydroxyproline dehydratase

Chain D:  92% 2%



4 Data and refinement statistics

Property	Value	Source
Space group	P 43 21 2	Depositor
Cell constants a, b, c, α , β , γ	122.58Å 122.58Å 167.59Å 90.00° 90.00° 90.00°	Depositor
Resolution (Å)	32.98 – 2.00 33.32 – 2.00	Depositor EDS
% Data completeness (in resolution range)	100.0 (32.98-2.00) 100.0 (33.32-2.00)	Depositor EDS
R_{merge}	0.17	Depositor
R_{sym}	0.17	Depositor
$\langle I/\sigma(I) \rangle$ ¹	2.86 (at 2.00Å)	Xtrriage
Refinement program	PHENIX 1.8.1_1168	Depositor
R, R_{free}	0.136 , 0.166 0.139 , 0.167	Depositor DCC
R_{free} test set	4336 reflections (5.01%)	wwPDB-VP
Wilson B-factor (Å ²)	22.8	Xtrriage
Anisotropy	0.400	Xtrriage
Bulk solvent k_{sol} (e/Å ³), B_{sol} (Å ²)	0.41 , 59.2	EDS
L-test for twinning ²	$\langle L \rangle = 0.48$, $\langle L^2 \rangle = 0.31$	Xtrriage
Estimated twinning fraction	No twinning to report.	Xtrriage
F_o, F_c correlation	0.97	EDS
Total number of atoms	11146	wwPDB-VP
Average B, all atoms (Å ²)	27.0	wwPDB-VP

Xtrriage's analysis on translational NCS is as follows: *The largest off-origin peak in the Patterson function is 2.87% of the height of the origin peak. No significant pseudotranslation is detected.*

¹Intensities estimated from amplitudes.

²Theoretical values of $\langle |L| \rangle$, $\langle L^2 \rangle$ for acentric reflections are 0.5, 0.333 respectively for untwinned datasets, and 0.375, 0.2 for perfectly twinned datasets.

5 Model quality [i](#)

5.1 Standard geometry [i](#)

Bond lengths and bond angles in the following residue types are not validated in this section: ACT, CIT, PYC

The Z score for a bond length (or angle) is the number of standard deviations the observed value is removed from the expected value. A bond length (or angle) with $|Z| > 5$ is considered an outlier worth inspection. RMSZ is the root-mean-square of all Z scores of the bond lengths (or angles).

Mol	Chain	Bond lengths		Bond angles	
		RMSZ	# Z >5	RMSZ	# Z >5
1	B	0.54	0/2568	0.71	1/3497 (0.0%)
1	D	0.47	0/2699	0.63	1/3674 (0.0%)
All	All	0.51	0/5267	0.67	2/7171 (0.0%)

There are no bond length outliers.

All (2) bond angle outliers are listed below:

Mol	Chain	Res	Type	Atoms	Z	Observed(°)	Ideal(°)
1	B	39	ARG	NE-CZ-NH2	-5.81	117.40	120.30
1	D	252	ASP	CB-CG-OD1	5.27	123.04	118.30

There are no chirality outliers.

There are no planarity outliers.

5.2 Too-close contacts [i](#)

In the following table, the Non-H and H(model) columns list the number of non-hydrogen atoms and hydrogen atoms in the chain respectively. The H(added) column lists the number of hydrogen atoms added and optimized by MolProbity. The Clashes column lists the number of clashes within the asymmetric unit, whereas Symm-Clashes lists symmetry-related clashes.

Mol	Chain	Non-H	H(model)	H(added)	Clashes	Symm-Clashes
1	B	2516	2515	2507	15	0
1	D	2639	2635	2624	11	0
2	B	26	10	10	2	0
3	B	4	3	3	1	0
4	B	8	0	4	0	0
4	D	8	0	4	0	0
5	B	435	0	0	6	1

Continued on next page...

Continued from previous page...

Mol	Chain	Non-H	H(model)	H(added)	Clashes	Symm-Clashes
5	D	347	0	0	5	0
All	All	5983	5163	5152	29	1

The all-atom clashscore is defined as the number of clashes found per 1000 atoms (including hydrogen atoms). The all-atom clashscore for this structure is 3.

The worst 5 of 29 close contacts within the same asymmetric unit are listed below, sorted by their clash magnitude.

Atom-1	Atom-2	Interatomic distance (Å)	Clash overlap (Å)
1:B:85:ASP:OD2	5:B:1411:HOH:O	1.93	0.84
1:B:247:ARG:NH2	5:B:1411:HOH:O	2.07	0.77
1:B:185:SER:O	1:B:190:GLU:OE1	2.10	0.70
1:B:185:SER:N	1:B:190:GLU:OE1	2.25	0.68
1:B:294:ASP:OD2	5:B:1322:HOH:O	2.10	0.68

All (1) symmetry-related close contacts are listed below. The label for Atom-2 includes the symmetry operator and encoded unit-cell translations to be applied.

Atom-1	Atom-2	Interatomic distance (Å)	Clash overlap (Å)
5:B:1219:HOH:O	5:B:1324:HOH:O[4_455]	2.19	0.01

5.3 Torsion angles [i](#)

5.3.1 Protein backbone [i](#)

In the following table, the Percentiles column shows the percent Ramachandran outliers of the chain as a percentile score with respect to all X-ray entries followed by that with respect to entries of similar resolution.

The Analysed column shows the number of residues for which the backbone conformation was analysed, and the total number of residues.

Mol	Chain	Analysed	Favoured	Allowed	Outliers	Percentiles	
1	B	336/364 (92%)	329 (98%)	6 (2%)	1 (0%)	41	37
1	D	352/364 (97%)	345 (98%)	6 (2%)	1 (0%)	41	37
All	All	688/728 (94%)	674 (98%)	12 (2%)	2 (0%)	41	37

All (2) Ramachandran outliers are listed below:

Mol	Chain	Res	Type
1	B	249	GLY
1	D	249	GLY

5.3.2 Protein sidechains [i](#)

In the following table, the Percentiles column shows the percent sidechain outliers of the chain as a percentile score with respect to all X-ray entries followed by that with respect to entries of similar resolution.

The Analysed column shows the number of residues for which the sidechain conformation was analysed, and the total number of residues.

Mol	Chain	Analysed	Rotameric	Outliers	Percentiles
1	B	273/297 (92%)	272 (100%)	1 (0%)	91 93
1	D	288/297 (97%)	286 (99%)	2 (1%)	84 88
All	All	561/594 (94%)	558 (100%)	3 (0%)	88 92

All (3) residues with a non-rotameric sidechain are listed below:

Mol	Chain	Res	Type
1	B	5	LYS
1	D	-7	THR
1	D	290	LYS

Sometimes sidechains can be flipped to improve hydrogen bonding and reduce clashes. There are no such sidechains identified.

5.3.3 RNA [i](#)

There are no RNA molecules in this entry.

5.4 Non-standard residues in protein, DNA, RNA chains [i](#)

There are no non-standard protein/DNA/RNA residues in this entry.

5.5 Carbohydrates [i](#)

There are no monosaccharides in this entry.

5.6 Ligand geometry

5 ligands are modelled in this entry.

In the following table, the Counts columns list the number of bonds (or angles) for which Mogul statistics could be retrieved, the number of bonds (or angles) that are observed in the model and the number of bonds (or angles) that are defined in the Chemical Component Dictionary. The Link column lists molecule types, if any, to which the group is linked. The Z score for a bond length (or angle) is the number of standard deviations the observed value is removed from the expected value. A bond length (or angle) with $|Z| > 2$ is considered an outlier worth inspection. RMSZ is the root-mean-square of all Z scores of the bond lengths (or angles).

Mol	Type	Chain	Res	Link	Bond lengths			Bond angles		
					Counts	RMSZ	# Z > 2	Counts	RMSZ	# Z > 2
2	CIT	B	901	-	12,12,12	1.18	0	17,17,17	1.48	2 (11%)
3	ACT	B	902	-	3,3,3	0.93	0	3,3,3	1.28	0
4	PYC	D	401	-	8,8,8	0.87	0	8,10,10	0.99	0
4	PYC	B	904	-	8,8,8	0.90	0	8,10,10	1.25	1 (12%)
2	CIT	B	903	-	12,12,12	1.44	2 (16%)	17,17,17	1.87	5 (29%)

In the following table, the Chirals column lists the number of chiral outliers, the number of chiral centers analysed, the number of these observed in the model and the number defined in the Chemical Component Dictionary. Similar counts are reported in the Torsion and Rings columns. '-' means no outliers of that kind were identified.

Mol	Type	Chain	Res	Link	Chirals	Torsions	Rings
2	CIT	B	901	-	-	0/16/16/16	-
4	PYC	B	904	-	-	0/2/4/4	0/1/1/1
2	CIT	B	903	-	-	0/16/16/16	-
4	PYC	D	401	-	-	0/2/4/4	0/1/1/1

All (2) bond length outliers are listed below:

Mol	Chain	Res	Type	Atoms	Z	Observed(Å)	Ideal(Å)
2	B	903	CIT	C3-C6	-2.90	1.50	1.53
2	B	903	CIT	O7-C3	2.23	1.47	1.43

The worst 5 of 8 bond angle outliers are listed below:

Mol	Chain	Res	Type	Atoms	Z	Observed(°)	Ideal(°)
2	B	903	CIT	O6-C6-C3	4.18	120.32	113.05
2	B	901	CIT	O6-C6-C3	3.26	118.71	113.05
2	B	903	CIT	O7-C3-C6	-2.96	104.70	108.86
2	B	903	CIT	O5-C6-C3	-2.73	118.39	122.25

Continued on next page...

Continued from previous page...

Mol	Chain	Res	Type	Atoms	Z	Observed(°)	Ideal(°)
4	B	904	PYC	O8-C1-C2	2.09	119.44	114.69

There are no chirality outliers.

There are no torsion outliers.

There are no ring outliers.

3 monomers are involved in 3 short contacts:

Mol	Chain	Res	Type	Clashes	Symm-Clashes
2	B	901	CIT	1	0
3	B	902	ACT	1	0
2	B	903	CIT	1	0

5.7 Other polymers [i](#)

There are no such residues in this entry.

5.8 Polymer linkage issues [i](#)

There are no chain breaks in this entry.

6 Fit of model and data [i](#)

6.1 Protein, DNA and RNA chains [i](#)

In the following table, the column labelled ‘#RSRZ > 2’ contains the number (and percentage) of RSRZ outliers, followed by percent RSRZ outliers for the chain as percentile scores relative to all X-ray entries and entries of similar resolution. The OWAB column contains the minimum, median, 95th percentile and maximum values of the occupancy-weighted average B-factor per residue. The column labelled ‘Q < 0.9’ lists the number of (and percentage) of residues with an average occupancy less than 0.9.

Mol	Chain	Analysed	<RSRZ>	#RSRZ>2	OWAB(Å ²)	Q<0.9
1	B	338/364 (92%)	-0.45	1 (0%) 94 93	10, 17, 36, 59	0
1	D	352/364 (96%)	-0.15	9 (2%) 56 54	13, 24, 46, 71	0
All	All	690/728 (94%)	-0.29	10 (1%) 75 74	10, 21, 43, 71	0

The worst 5 of 10 RSRZ outliers are listed below:

Mol	Chain	Res	Type	RSRZ
1	B	342	ILE	5.9
1	D	2	ARG	5.3
1	D	3	THR	4.3
1	D	-3	TYR	3.0
1	D	342	ILE	2.9

6.2 Non-standard residues in protein, DNA, RNA chains [i](#)

There are no non-standard protein/DNA/RNA residues in this entry.

6.3 Carbohydrates [i](#)

There are no monosaccharides in this entry.

6.4 Ligands [i](#)

In the following table, the Atoms column lists the number of modelled atoms in the group and the number defined in the chemical component dictionary. The B-factors column lists the minimum, median, 95th percentile and maximum values of B factors of atoms in the group. The column labelled ‘Q < 0.9’ lists the number of atoms with occupancy less than 0.9.

Mol	Type	Chain	Res	Atoms	RSCC	RSR	B-factors(\AA^2)	Q<0.9
3	ACT	B	902	4/4	0.87	0.15	19,23,38,42	0
2	CIT	B	903	13/13	0.93	0.18	25,34,48,48	0
2	CIT	B	901	13/13	0.95	0.10	23,28,32,33	0
4	PYC	B	904	8/8	0.99	0.21	9,11,12,14	0
4	PYC	D	401	8/8	0.99	0.31	15,19,20,20	0

6.5 Other polymers [i](#)

There are no such residues in this entry.