



Full wwPDB EM Validation Report ⓘ

Jan 5, 2021 – 12:15 PM EST

PDB ID : 7KIY
EMDB ID : EMD-22890
Title : Plasmodium falciparum RhopH complex in soluble form
Authors : Schureck, M.A.; Darling, J.E.; Merk, A.; Subramaniam, S.; Desai, S.A.
Deposited on : 2020-10-25
Resolution : 2.92 Å (reported)

This is a Full wwPDB EM Validation Report for a publicly released PDB entry.

We welcome your comments at validation@mail.wwpdb.org

A user guide is available at

<https://www.wwpdb.org/validation/2017/EMValidationReportHelp>

with specific help available everywhere you see the ⓘ symbol.

The following versions of software and data (see [references ⓘ](#)) were used in the production of this report:

EMDB validation analysis : 0.0.0.dev61
MolProbity : 4.02b-467
Percentile statistics : 20191225.v01 (using entries in the PDB archive December 25th 2019)
Ideal geometry (proteins) : Engh & Huber (2001)
Ideal geometry (DNA, RNA) : Parkinson et al. (1996)
Validation Pipeline (wwPDB-VP) : 2.16

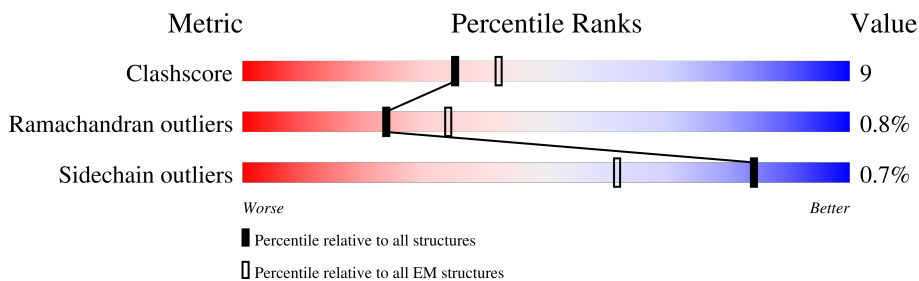
1 Overall quality at a glance i

The following experimental techniques were used to determine the structure:

ELECTRON MICROSCOPY

The reported resolution of this entry is 2.92 Å.

Percentile scores (ranging between 0-100) for global validation metrics of the entry are shown in the following graphic. The table shows the number of entries on which the scores are based.



Metric	Whole archive (#Entries)	EM structures (#Entries)
Clashscore	158937	4297
Ramachandran outliers	154571	4023
Sidechain outliers	154315	3826

The table below summarises the geometric issues observed across the polymeric chains and their fit to the map. The red, orange, yellow and green segments of the bar indicate the fraction of residues that contain outliers for ≥ 3 , 2, 1 and 0 types of geometric quality criteria respectively. A grey segment represents the fraction of residues that are not modelled. The numeric value for each fraction is indicated below the corresponding segment, with a dot representing fractions $\leq 5\%$. The upper red bar (where present) indicates the fraction of residues that have poor fit to the EM map (all-atom inclusion $< 40\%$). The numeric value is given above the bar.

Mol	Chain	Length	Quality of chain
1	A	1505	9% (red), 63% (green), 14% (yellow), 22% (grey)
2	B	1378	19% (red), 31% (green), 6% (yellow), 63% (grey)
3	C	897	10% (red), 59% (green), 17% (yellow), 23% (grey)

2 Entry composition

There are 3 unique types of molecules in this entry. The entry contains 19870 atoms, of which 0 are hydrogens and 0 are deuteriums.

In the tables below, the AltConf column contains the number of residues with at least one atom in alternate conformation and the Trace column contains the number of residues modelled with at most 2 atoms.

- Molecule 1 is a protein called Cytoadherence linked asexual protein 3.

Mol	Chain	Residues	Atoms					AltConf	Trace
			Total	C	N	O	S		
1	A	1169	9817	6378	1566	1819	54	0	0

- Molecule 2 is a protein called High molecular weight rhopty protein-2.

Mol	Chain	Residues	Atoms					AltConf	Trace
			Total	C	N	O	S		
2	B	516	4308	2810	687	791	20	0	0

There are 3 discrepancies between the modelled and reference sequences:

Chain	Residue	Modelled	Actual	Comment	Reference
B	936	PRO	SER	conflict	UNP Q8I060
B	956	LYS	GLU	conflict	UNP Q8I060
B	991	HIS	ARG	conflict	UNP Q8I060

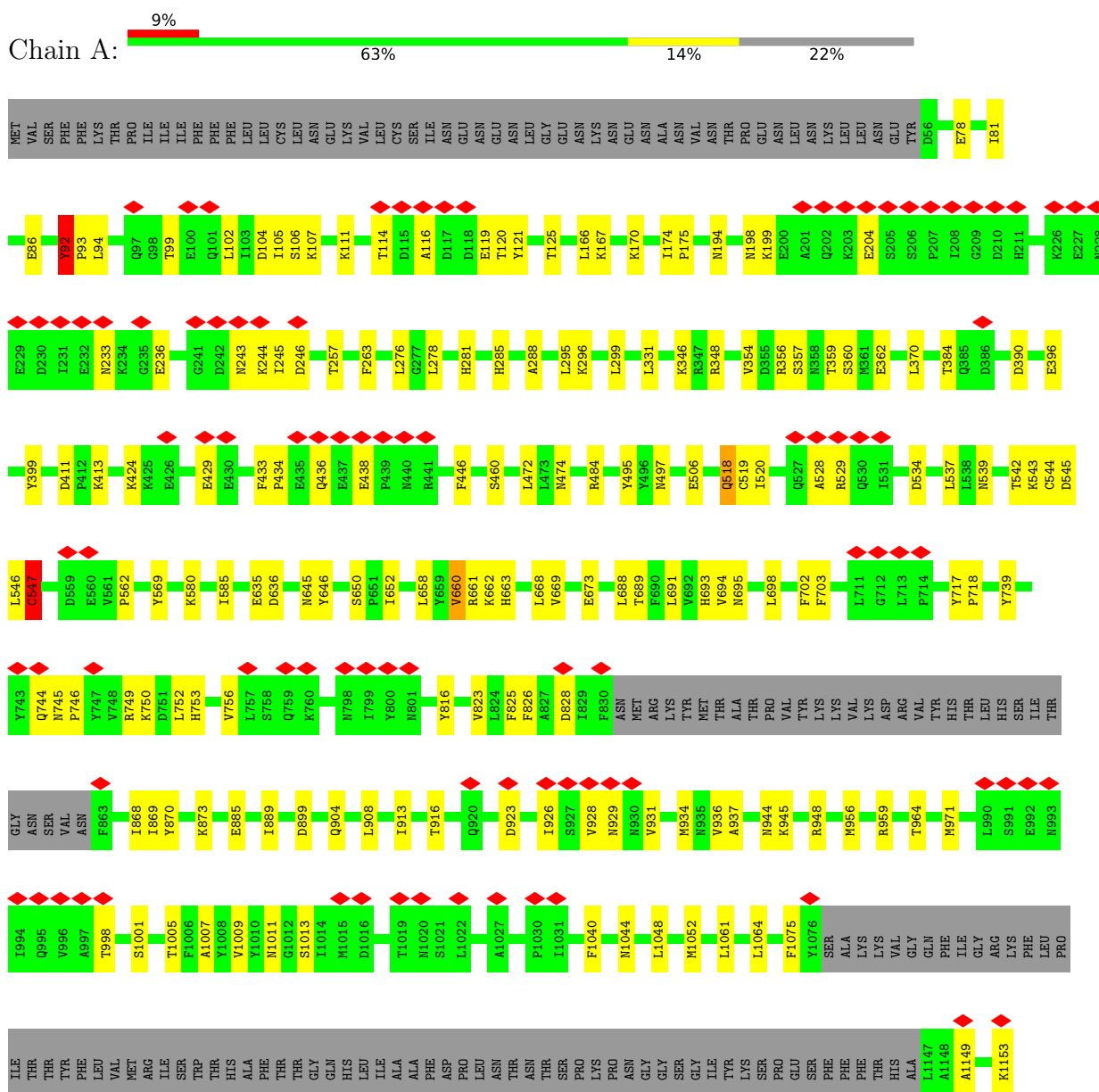
- Molecule 3 is a protein called High molecular weight rhopty protein 3.

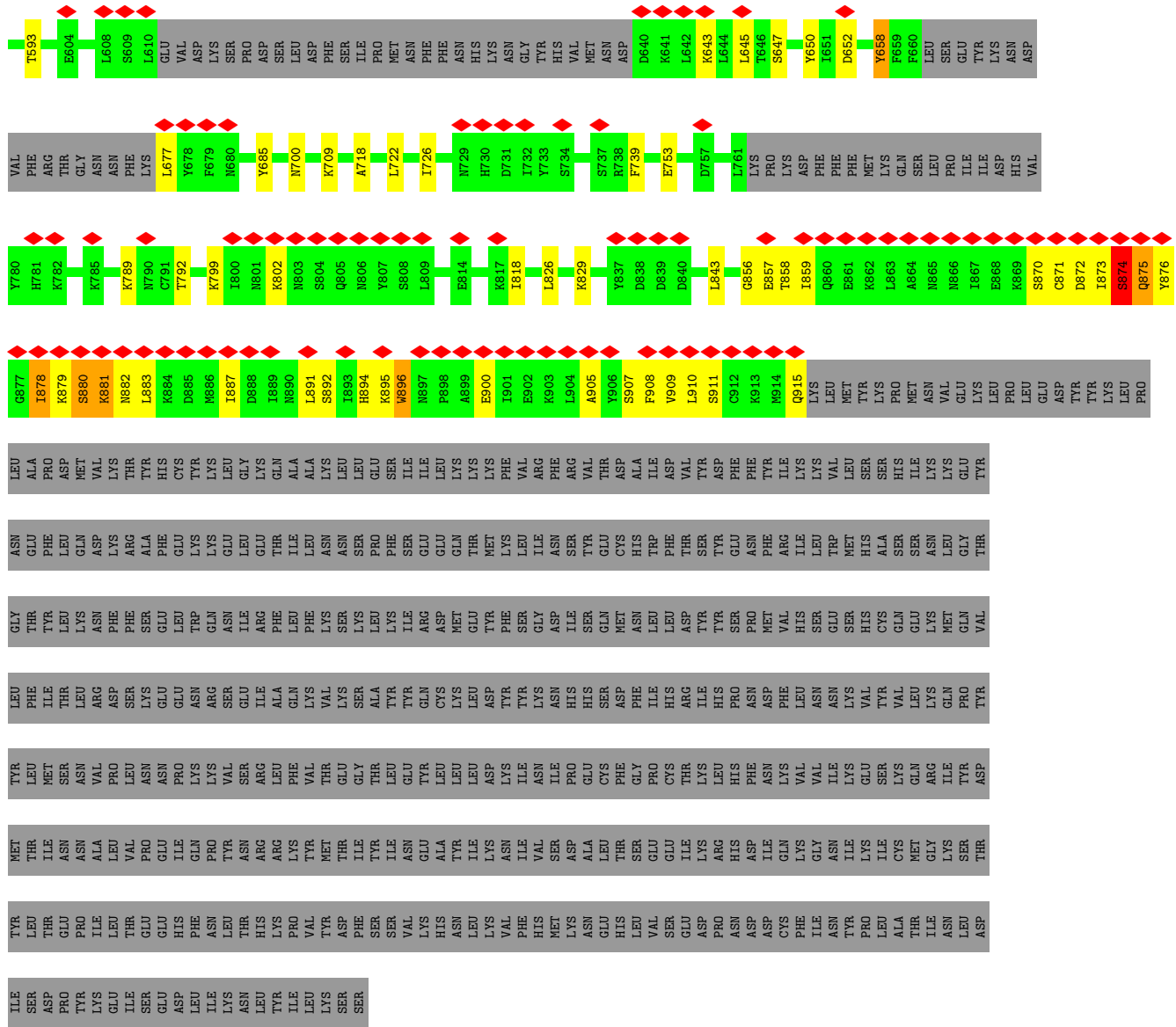
Mol	Chain	Residues	Atoms					AltConf	Trace
			Total	C	N	O	S		
3	C	691	5745	3743	916	1062	24	0	0

3 Residue-property plots

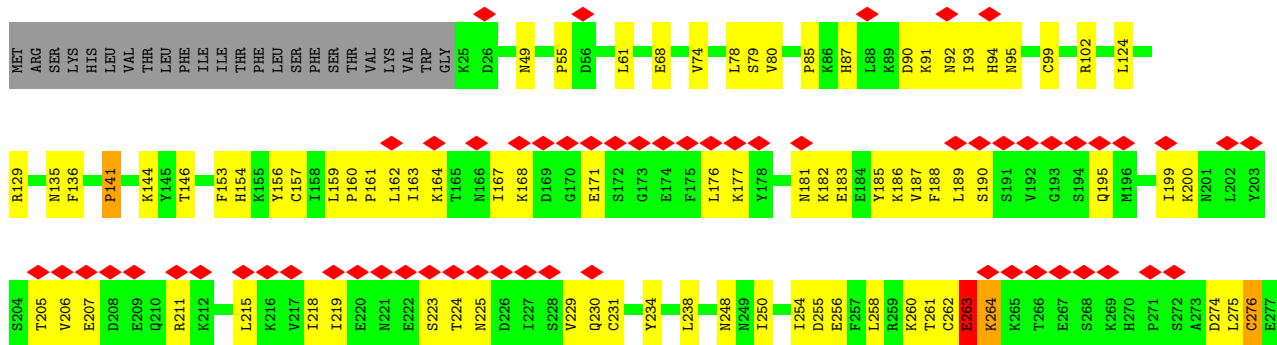
These plots are drawn for all protein, RNA, DNA and oligosaccharide chains in the entry. The first graphic for a chain summarises the proportions of the various outlier classes displayed in the second graphic. The second graphic shows the sequence view annotated by issues in geometry and atom inclusion in map density. Residues are color-coded according to the number of geometric quality criteria for which they contain at least one outlier: green = 0, yellow = 1, orange = 2 and red = 3 or more. A red diamond above a residue indicates a poor fit to the EM map for this residue (all-atom inclusion < 40%). Stretches of 2 or more consecutive residues without any outlier are shown as a green connector. Residues present in the sample, but not in the model, are shown in grey.

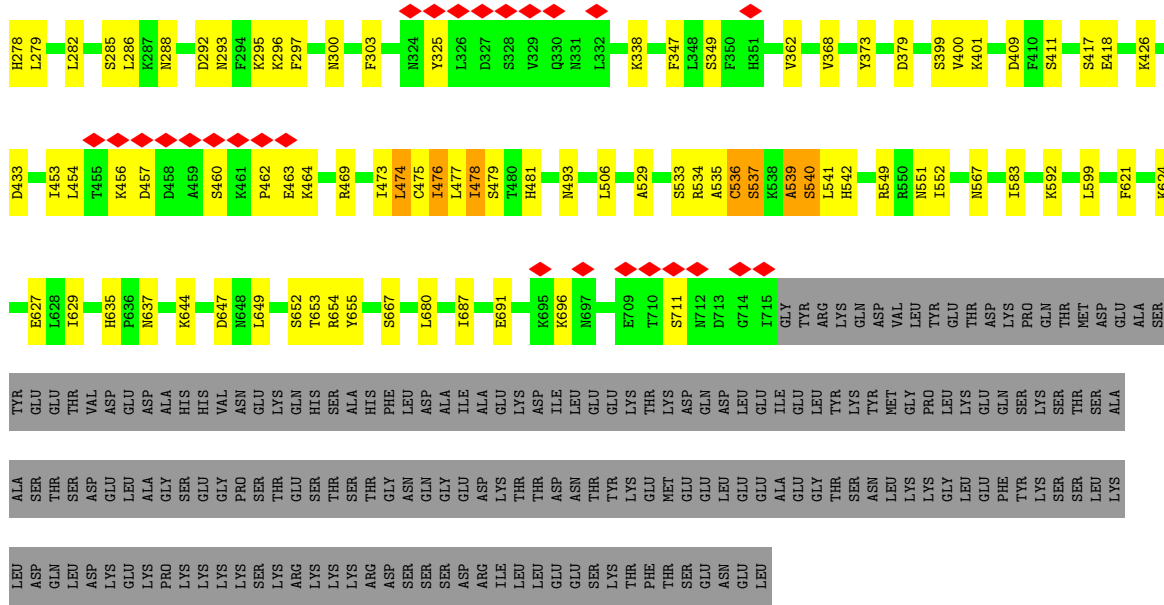
- Molecule 1: Cytoadherence linked asexual protein 3





• Molecule 3: High molecular weight rhoptry protein 3





4 Experimental information

Property	Value	Source
EM reconstruction method	SINGLE PARTICLE	Depositor
Imposed symmetry	POINT, Not provided	
Number of particles used	68216	Depositor
Resolution determination method	FSC 0.143 CUT-OFF	Depositor
CTF correction method	PHASE FLIPPING AND AMPLITUDE CORRECTION	Depositor
Microscope	FEI TITAN KRIOS	Depositor
Voltage (kV)	300	Depositor
Electron dose ($e^-/\text{\AA}^2$)	70	Depositor
Minimum defocus (nm)	Not provided	
Maximum defocus (nm)	Not provided	
Magnification	Not provided	
Image detector	GATAN K2 SUMMIT (4k x 4k)	Depositor
Maximum map value	0.053	Depositor
Minimum map value	-0.022	Depositor
Average map value	0.000	Depositor
Map value standard deviation	0.001	Depositor
Recommended contour level	0.01	Depositor
Map size (Å)	336.0, 336.0, 336.0	wwPDB
Map dimensions	400, 400, 400	wwPDB
Map angles (°)	90.0, 90.0, 90.0	wwPDB
Pixel spacing (Å)	0.84, 0.84, 0.84	Depositor

5 Model quality i

5.1 Standard geometry i

The Z score for a bond length (or angle) is the number of standard deviations the observed value is removed from the expected value. A bond length (or angle) with $|Z| > 5$ is considered an outlier worth inspection. RMSZ is the root-mean-square of all Z scores of the bond lengths (or angles).

Mol	Chain	Bond lengths		Bond angles	
		RMSZ	# Z >5	RMSZ	# Z >5
1	A	0.37	1/10054 (0.0%)	0.50	3/13547 (0.0%)
2	B	0.33	0/4397	0.50	0/5925
3	C	0.55	13/5889 (0.2%)	0.60	8/7949 (0.1%)
All	All	0.42	14/20340 (0.1%)	0.53	11/27421 (0.0%)

Chiral center outliers are detected by calculating the chiral volume of a chiral center and verifying if the center is modelled as a planar moiety or with the opposite hand. A planarity outlier is detected by checking planarity of atoms in a peptide group, atoms in a mainchain group or atoms of a sidechain that are expected to be planar.

Mol	Chain	#Chirality outliers	#Planarity outliers
1	A	0	4
2	B	0	5
3	C	0	2
All	All	0	11

All (14) bond length outliers are listed below:

Mol	Chain	Res	Type	Atoms	Z	Observed(Å)	Ideal(Å)
3	C	536	CYS	CB-SG	-9.67	1.65	1.82
3	C	479	SER	CA-CB	-9.54	1.38	1.52
3	C	479	SER	CB-OG	-7.08	1.33	1.42
3	C	479	SER	C-O	-7.06	1.09	1.23
3	C	475	CYS	CB-SG	-6.94	1.70	1.82
3	C	533	SER	CA-CB	-6.94	1.42	1.52
3	C	477	LEU	C-O	-6.23	1.11	1.23
3	C	476	ILE	C-O	-5.70	1.12	1.23
1	A	547	CYS	C-O	-5.51	1.12	1.23
3	C	535	ALA	C-O	-5.40	1.13	1.23
3	C	537	SER	CB-OG	-5.27	1.35	1.42
3	C	533	SER	CB-OG	-5.12	1.35	1.42
3	C	474	LEU	C-O	-5.05	1.13	1.23
3	C	537	SER	CA-CB	-5.04	1.45	1.52

All (11) bond angle outliers are listed below:

Mol	Chain	Res	Type	Atoms	Z	Observed(°)	Ideal(°)
3	C	536	CYS	CA-CB-SG	-15.22	86.60	114.00
3	C	476	ILE	CG1-CB-CG2	-8.41	92.89	111.40
3	C	475	CYS	CB-CA-C	-8.01	94.38	110.40
1	A	520	ILE	CB-CA-C	-6.92	97.77	111.60
3	C	477	LEU	CB-CG-CD2	-5.89	100.99	111.00
1	A	1261	LEU	CA-CB-CG	5.74	128.51	115.30
3	C	478	ILE	CG1-CB-CG2	-5.63	99.02	111.40
3	C	539	ALA	O-C-N	-5.36	114.13	122.70
3	C	536	CYS	N-CA-C	5.21	125.06	111.00
3	C	262	CYS	N-CA-C	-5.21	96.94	111.00
1	A	520	ILE	C-N-CA	-5.10	108.94	121.70

There are no chirality outliers.

All (11) planarity outliers are listed below:

Mol	Chain	Res	Type	Group
1	A	357	SER	Peptide
1	A	390	ASP	Peptide
1	A	660	VAL	Peptide
1	A	92	TYR	Peptide
2	B	348	TYR	Peptide
2	B	535	GLN	Peptide
2	B	856	GLY	Peptide
2	B	876	TYR	Peptide
2	B	896	TRP	Peptide
3	C	156	TYR	Peptide
3	C	288	ASN	Peptide

5.2 Too-close contacts [i](#)

In the following table, the Non-H and H(model) columns list the number of non-hydrogen atoms and hydrogen atoms in the chain respectively. The H(added) column lists the number of hydrogen atoms added and optimized by MolProbity. The Clashes column lists the number of clashes within the asymmetric unit, whereas Symm-Clashes lists symmetry-related clashes.

Mol	Chain	Non-H	H(model)	H(added)	Clashes	Symm-Clashes
1	A	9817	0	9653	135	0
2	B	4308	0	4327	95	0
3	C	5745	0	5718	120	0
All	All	19870	0	19698	343	0

The all-atom clashscore is defined as the number of clashes found per 1000 atoms (including hydrogen atoms). The all-atom clashscore for this structure is 9.

All (343) close contacts within the same asymmetric unit are listed below, sorted by their clash magnitude.

Atom-1	Atom-2	Interatomic distance (Å)	Clash overlap (Å)
2:B:878:ILE:HG23	2:B:883:LEU:CD1	1.28	1.53
2:B:878:ILE:CG2	2:B:883:LEU:CG	1.82	1.51
2:B:878:ILE:HG22	2:B:883:LEU:CD2	1.06	1.51
2:B:878:ILE:HG22	2:B:883:LEU:CG	1.43	1.39
2:B:878:ILE:O	2:B:883:LEU:CD2	1.72	1.35
2:B:878:ILE:CG2	2:B:883:LEU:HD21	1.53	1.31
2:B:878:ILE:O	2:B:883:LEU:HD22	1.11	1.26
3:C:539:ALA:O	3:C:541:LEU:N	1.72	1.22
2:B:878:ILE:CG2	2:B:883:LEU:HG	1.58	1.19
2:B:878:ILE:CG2	2:B:883:LEU:HD11	1.73	1.13
2:B:878:ILE:CG2	2:B:883:LEU:CD2	1.96	1.08
2:B:878:ILE:HG23	2:B:883:LEU:CG	1.66	1.04
2:B:878:ILE:CG2	2:B:883:LEU:CD1	2.13	1.01
3:C:258:LEU:HD11	3:C:275:LEU:HD23	1.45	0.99
2:B:878:ILE:CB	2:B:883:LEU:HD21	1.93	0.99
2:B:878:ILE:C	2:B:883:LEU:CD2	2.32	0.97
2:B:880:SER:O	2:B:882:ASN:N	1.97	0.96
2:B:878:ILE:HG21	2:B:883:LEU:HG	1.52	0.92
2:B:878:ILE:C	2:B:883:LEU:HD21	1.91	0.90
2:B:878:ILE:HG22	2:B:883:LEU:HD21	0.91	0.90
1:A:544:CYS:HA	1:A:547:CYS:HB2	1.54	0.89
3:C:539:ALA:O	3:C:540:SER:C	1.98	0.89
2:B:878:ILE:O	2:B:883:LEU:HD21	1.72	0.88
2:B:879:LYS:N	2:B:883:LEU:CD1	2.36	0.86
2:B:878:ILE:HG22	2:B:883:LEU:HD23	1.54	0.85
2:B:878:ILE:HG23	2:B:883:LEU:HD11	0.83	0.83
2:B:875:GLN:NE2	2:B:915:GLN:HG3	1.94	0.81
1:A:923:ASP:HB2	1:A:926:ILE:HD13	1.63	0.80
3:C:160:PRO:HD2	3:C:278:HIS:ND1	1.98	0.78
3:C:539:ALA:O	3:C:542:HIS:N	2.17	0.77
3:C:160:PRO:CD	3:C:278:HIS:ND1	2.47	0.76
2:B:878:ILE:CA	2:B:883:LEU:HD21	2.15	0.76
3:C:263:GLU:OE1	3:C:263:GLU:N	2.22	0.73
1:A:1007:ALA:O	1:A:1011:ASN:ND2	2.22	0.73
3:C:258:LEU:HD11	3:C:275:LEU:CD2	2.17	0.73
1:A:826:PHE:HZ	1:A:1048:LEU:HD22	1.54	0.72
3:C:460:SER:HA	3:C:462:PRO:HD3	1.72	0.72

Continued on next page...

Continued from previous page...

Atom-1	Atom-2	Interatomic distance (Å)	Clash overlap (Å)
3:C:182:LYS:HD3	3:C:186:LYS:HG3	1.72	0.72
2:B:878:ILE:C	2:B:883:LEU:CD1	2.58	0.71
2:B:875:GLN:CD	2:B:915:GLN:HG3	2.10	0.71
1:A:661:ARG:HB3	1:A:662:LYS:HB3	1.71	0.70
2:B:879:LYS:N	2:B:883:LEU:HD11	2.05	0.70
2:B:880:SER:O	2:B:881:LYS:C	2.26	0.69
3:C:206:VAL:O	3:C:211:ARG:NE	2.19	0.69
3:C:163:ILE:HG22	3:C:231:CYS:HB3	1.75	0.69
3:C:300:ASN:HD22	3:C:303:PHE:HE2	1.39	0.69
3:C:463:GLU:HG2	3:C:464:LYS:H	1.57	0.69
1:A:359:THR:HG22	1:A:360:SER:H	1.57	0.69
3:C:263:GLU:O	3:C:264:LYS:C	2.33	0.68
3:C:229:VAL:HG23	3:C:230:GLN:H	1.60	0.67
2:B:875:GLN:NE2	2:B:915:GLN:CG	2.58	0.67
2:B:894:HIS:O	2:B:895:LYS:HG2	1.97	0.65
3:C:293:ASN:HA	3:C:296:LYS:HG2	1.79	0.64
1:A:424:LYS:HE2	1:A:429:GLU:HB2	1.79	0.64
2:B:858:THR:HG22	2:B:859:ILE:H	1.62	0.64
1:A:928:VAL:HG13	1:A:929:ASN:H	1.62	0.64
3:C:417:SER:OG	3:C:418:GLU:N	2.31	0.63
1:A:460:SER:OG	1:A:652:ILE:O	2.12	0.63
3:C:171:GLU:HG3	3:C:176:LEU:HB3	1.80	0.63
2:B:873:ILE:HG23	2:B:873:ILE:O	1.99	0.63
1:A:1346:GLN:NE2	3:C:325:TYR:OH	2.29	0.63
2:B:530:ASP:HB3	2:B:533:VAL:HB	1.80	0.63
2:B:875:GLN:HE22	2:B:915:GLN:CD	2.01	0.63
1:A:245:ILE:HG22	1:A:246:ASP:H	1.64	0.62
3:C:539:ALA:C	3:C:541:LEU:N	2.47	0.62
2:B:271:VAL:HG13	2:B:272:LYS:H	1.64	0.61
3:C:85:PRO:HG2	3:C:87:HIS:HD2	1.65	0.61
1:A:1204:PHE:O	1:A:1208:LEU:HG	2.01	0.61
2:B:880:SER:C	2:B:882:ASN:N	2.52	0.61
3:C:162:LEU:HD23	3:C:181:ASN:HD21	1.65	0.61
3:C:261:THR:O	3:C:261:THR:HG22	2.01	0.60
2:B:843:LEU:HG	2:B:896:TRP:HH2	1.67	0.60
1:A:661:ARG:HB3	1:A:662:LYS:CB	2.31	0.60
3:C:206:VAL:HG13	3:C:207:GLU:H	1.66	0.60
1:A:354:VAL:HG23	1:A:356:ARG:HG2	1.84	0.60
3:C:159:LEU:HD12	3:C:160:PRO:HD2	1.84	0.60
1:A:1351:ARG:HH22	3:C:506:LEU:HD11	1.66	0.60
3:C:276:CYS:O	3:C:279:LEU:HG	2.02	0.59

Continued on next page...

Continued from previous page...

Atom-1	Atom-2	Interatomic distance (Å)	Clash overlap (Å)
3:C:292:ASP:HA	3:C:295:LYS:NZ	2.16	0.59
2:B:513:ASP:OD2	2:B:514:LEU:N	2.36	0.59
3:C:652:SER:O	3:C:654:ARG:N	2.36	0.58
3:C:91:LYS:O	3:C:94:HIS:NE2	2.36	0.58
2:B:874:SER:O	2:B:874:SER:OG	2.21	0.58
2:B:908:PHE:HA	2:B:911:SER:HB3	1.85	0.58
1:A:1264:ILE:HD11	1:A:1269:LEU:HD21	1.85	0.58
2:B:499:TYR:HD2	2:B:546:PHE:HE1	1.50	0.58
3:C:129:ARG:HE	3:C:141:PRO:HG3	1.69	0.58
3:C:234:TYR:CD2	3:C:275:LEU:HD13	2.39	0.58
1:A:236:GLU:OE1	1:A:569:TYR:OH	2.09	0.57
3:C:183:GLU:HG3	3:C:185:TYR:HD1	1.69	0.57
1:A:384:THR:HG21	1:A:472:LEU:HD22	1.86	0.57
1:A:78:GLU:OE2	1:A:170:LYS:NZ	2.31	0.57
1:A:658:LEU:HG	1:A:668:LEU:HD12	1.87	0.57
1:A:544:CYS:CA	1:A:547:CYS:HB2	2.32	0.57
3:C:61:LEU:HD23	3:C:144:LYS:HG3	1.86	0.57
1:A:703:PHE:HE1	2:B:700:ASN:HD22	1.53	0.57
1:A:534:ASP:O	1:A:539:ASN:ND2	2.37	0.56
1:A:749:ARG:O	1:A:753:HIS:ND1	2.37	0.56
3:C:481:HIS:HD2	3:C:680:LEU:HD22	1.69	0.56
1:A:1331:TYR:HB2	1:A:1334:ASP:OD2	2.05	0.56
2:B:880:SER:C	2:B:882:ASN:H	2.08	0.56
2:B:652:ASP:OD1	2:B:829:LYS:NZ	2.24	0.56
1:A:828:ASP:HB3	1:A:868:ILE:HB	1.89	0.55
1:A:1064:LEU:HD12	1:A:1219:PHE:HE1	1.71	0.55
1:A:825:PHE:HB3	1:A:869:ILE:HG23	1.89	0.55
2:B:878:ILE:C	2:B:883:LEU:HD11	2.22	0.55
1:A:1256:TYR:CZ	1:A:1260:LYS:HD3	2.41	0.55
3:C:292:ASP:HA	3:C:295:LYS:HZ2	1.72	0.55
1:A:753:HIS:HA	1:A:756:VAL:HG12	1.89	0.54
2:B:363:GLN:OE1	2:B:363:GLN:N	2.40	0.54
3:C:90:ASP:OD1	3:C:94:HIS:NE2	2.41	0.54
1:A:944:ASN:O	1:A:948:ARG:NH1	2.40	0.54
1:A:194:ASN:HA	1:A:198:ASN:HD22	1.73	0.54
3:C:74:VAL:HA	3:C:78:LEU:HB2	1.89	0.54
3:C:135:ASN:OD1	3:C:136:PHE:N	2.42	0.53
3:C:163:ILE:HD12	3:C:229:VAL:HG12	1.90	0.53
3:C:426:LYS:HB2	3:C:621:PHE:CZ	2.43	0.53
1:A:1354:TYR:O	1:A:1356:PRO:HD3	2.09	0.53
2:B:272:LYS:HZ3	2:B:279:LEU:HB3	1.74	0.53

Continued on next page...

Continued from previous page...

Atom-1	Atom-2	Interatomic distance (Å)	Clash overlap (Å)
2:B:685:TYR:OH	2:B:753:GLU:OE2	2.26	0.53
1:A:998:THR:HB	1:A:1001:SER:HB3	1.91	0.53
1:A:1264:ILE:HG13	1:A:1268:LEU:HD11	1.90	0.53
1:A:913:ILE:O	1:A:916:THR:HG22	2.08	0.53
1:A:944:ASN:OD1	1:A:945:LYS:N	2.39	0.53
2:B:645:LEU:HA	2:B:650:TYR:CD2	2.45	0.52
2:B:892:SER:HA	2:B:896:TRP:HE1	1.74	0.52
1:A:646:TYR:HE1	1:A:1237:SER:HB3	1.73	0.52
3:C:164:LYS:N	3:C:229:VAL:O	2.37	0.52
3:C:652:SER:C	3:C:654:ARG:H	2.12	0.52
2:B:894:HIS:ND1	2:B:900:GLU:OE1	2.44	0.51
1:A:1218:PHE:HA	1:A:1221:ILE:HG12	1.92	0.51
1:A:1267:ASP:OD1	1:A:1268:LEU:N	2.43	0.51
1:A:233:ASN:HB2	1:A:236:GLU:HB3	1.91	0.51
1:A:904:GLN:HG2	1:A:1231:ILE:HG12	1.92	0.51
3:C:68:GLU:OE2	3:C:338:LYS:NZ	2.41	0.51
1:A:94:LEU:HA	1:A:121:TYR:HA	1.93	0.51
1:A:931:VAL:HB	1:A:959:ARG:HH12	1.75	0.50
1:A:660:VAL:HG23	1:A:661:ARG:H	1.77	0.50
2:B:857:GLU:O	2:B:858:THR:OG1	2.26	0.50
2:B:907:SER:O	2:B:910:LEU:HG	2.12	0.50
1:A:396:GLU:O	1:A:399:TYR:N	2.44	0.50
2:B:376:THR:HB	2:B:445:THR:HG21	1.94	0.50
3:C:200:LYS:HD3	3:C:218:ILE:HG12	1.93	0.50
1:A:693:HIS:HD2	1:A:695:ASN:H	1.60	0.50
3:C:635:HIS:HD2	3:C:637:ASN:H	1.59	0.50
2:B:535:GLN:HG3	2:B:536:ASN:H	1.76	0.50
2:B:499:TYR:CD2	2:B:546:PHE:HE1	2.29	0.50
1:A:99:THR:H	1:A:102:LEU:HB3	1.77	0.49
2:B:500:LEU:O	2:B:504:GLU:HB2	2.13	0.49
2:B:870:SER:C	2:B:872:ASP:N	2.65	0.49
2:B:875:GLN:NE2	2:B:915:GLN:CD	2.66	0.49
3:C:463:GLU:HG2	3:C:464:LYS:N	2.24	0.49
3:C:583:ILE:HD12	3:C:649:LEU:HD23	1.93	0.49
1:A:245:ILE:HG22	1:A:246:ASP:N	2.26	0.49
3:C:160:PRO:O	3:C:162:LEU:N	2.44	0.49
1:A:257:THR:HB	1:A:263:PHE:HD2	1.78	0.49
2:B:403:PHE:CD2	2:B:411:ARG:HB2	2.48	0.49
3:C:399:SER:OG	3:C:399:SER:O	2.28	0.49
2:B:234:SER:HB2	2:B:542:LYS:NZ	2.27	0.49
2:B:870:SER:C	2:B:872:ASP:H	2.16	0.48

Continued on next page...

Continued from previous page...

Atom-1	Atom-2	Interatomic distance (Å)	Clash overlap (Å)
3:C:207:GLU:HB2	3:C:211:ARG:HB3	1.94	0.48
1:A:542:THR:OG1	1:A:545:ASP:OD2	2.30	0.48
1:A:669:VAL:O	1:A:673:GLU:HG3	2.13	0.48
1:A:698:LEU:HD22	1:A:702:PHE:HB3	1.94	0.48
3:C:248:ASN:HA	3:C:362:VAL:HG22	1.96	0.48
1:A:691:LEU:HD12	1:A:823:VAL:HG12	1.95	0.48
2:B:722:LEU:O	2:B:726:ILE:HG22	2.14	0.48
3:C:255:ASP:OD2	3:C:256:GLU:N	2.46	0.48
1:A:1257:ALA:HA	1:A:1261:LEU:HG	1.95	0.48
2:B:879:LYS:HG3	2:B:880:SER:N	2.28	0.48
1:A:926:ILE:HG23	1:A:934:MET:HA	1.95	0.48
3:C:195:GLN:O	3:C:199:ILE:HG12	2.14	0.48
1:A:1009:VAL:HG22	1:A:1219:PHE:CZ	2.49	0.48
1:A:1149:ALA:O	1:A:1153:LYS:HG3	2.14	0.48
3:C:186:LYS:HD3	3:C:188:PHE:CZ	2.49	0.48
3:C:368:VAL:HG21	3:C:373:TYR:HB2	1.95	0.48
1:A:744:GLN:O	1:A:746:PRO:HD3	2.13	0.48
2:B:643:LYS:O	2:B:647:SER:N	2.47	0.48
1:A:1161:THR:OG1	1:A:1273:GLU:OE1	2.21	0.48
3:C:711:SER:OG	3:C:711:SER:O	2.29	0.48
3:C:250:ILE:O	3:C:254:ILE:HG13	2.14	0.47
3:C:469:ARG:HG3	3:C:667:SER:HB2	1.96	0.47
1:A:1001:SER:HB2	1:A:1208:LEU:HD22	1.95	0.47
1:A:928:VAL:HG23	1:A:959:ARG:NH2	2.29	0.47
2:B:362:LYS:O	2:B:366:SER:OG	2.26	0.47
3:C:49:ASN:OD1	3:C:55:PRO:HB3	2.14	0.47
1:A:348:ARG:NE	1:A:635:GLU:OE2	2.42	0.47
2:B:658:TYR:CD2	2:B:826:LEU:HD11	2.49	0.47
3:C:399:SER:O	3:C:401:LYS:N	2.48	0.47
1:A:899:ASP:OD2	1:A:1240:ARG:NH2	2.40	0.47
1:A:1238:ASN:C	1:A:1240:ARG:H	2.18	0.47
2:B:272:LYS:HG2	2:B:275:GLU:HG2	1.97	0.47
1:A:1064:LEU:HD12	1:A:1219:PHE:CE1	2.48	0.46
2:B:271:VAL:HG13	2:B:272:LYS:N	2.30	0.46
1:A:1005:THR:O	1:A:1009:VAL:HG23	2.15	0.46
3:C:433:ASP:OD1	3:C:433:ASP:N	2.40	0.46
1:A:1302:ASN:ND2	1:A:1305:HIS:HA	2.31	0.46
1:A:528:ALA:HA	1:A:529:ARG:HA	1.58	0.46
3:C:238:LEU:H	3:C:238:LEU:HD23	1.80	0.46
1:A:1230:ASN:OD1	1:A:1231:ILE:N	2.42	0.46
1:A:662:LYS:HG3	1:A:663:HIS:CE1	2.50	0.46

Continued on next page...

Continued from previous page...

Atom-1	Atom-2	Interatomic distance (Å)	Clash overlap (Å)
3:C:78:LEU:HA	3:C:78:LEU:HD23	1.77	0.46
3:C:456:LYS:HA	3:C:457:ASP:HA	1.50	0.46
2:B:895:LYS:HE2	2:B:895:LYS:HA	1.96	0.46
1:A:246:ASP:OD2	1:A:562:PRO:HG3	2.15	0.46
1:A:753:HIS:CD2	1:A:1163:LEU:HA	2.51	0.46
1:A:1278:LEU:O	1:A:1282:LYS:HG2	2.15	0.46
1:A:104:ASP:OD1	1:A:106:SER:OG	2.26	0.46
1:A:107:LYS:O	1:A:125:THR:OG1	2.30	0.46
3:C:168:LYS:HA	3:C:177:LYS:HG2	1.98	0.46
3:C:409:ASP:OD2	3:C:411:SER:OG	2.32	0.46
1:A:1238:ASN:O	1:A:1240:ARG:N	2.49	0.45
1:A:433:PHE:CD1	1:A:434:PRO:HD2	2.51	0.45
1:A:534:ASP:OD1	1:A:534:ASP:N	2.47	0.45
1:A:936:VAL:HG23	1:A:937:ALA:H	1.81	0.45
2:B:843:LEU:HG	2:B:896:TRP:CH2	2.51	0.45
3:C:624:LYS:O	3:C:627:GLU:HG3	2.16	0.45
3:C:182:LYS:CD	3:C:186:LYS:HG3	2.43	0.45
1:A:114:THR:C	1:A:116:ALA:H	2.20	0.45
1:A:1351:ARG:NH2	3:C:506:LEU:HD11	2.30	0.45
1:A:348:ARG:NH2	1:A:636:ASP:OD2	2.50	0.45
1:A:1157:PHE:HE1	1:A:1205:PHE:HZ	1.65	0.45
1:A:688:LEU:HD13	1:A:964:THR:HG23	1.98	0.45
2:B:858:THR:HG22	2:B:859:ILE:N	2.30	0.45
2:B:891:LEU:HG	2:B:900:GLU:HG3	1.98	0.45
3:C:478:ILE:CG2	3:C:478:ILE:O	2.65	0.45
3:C:78:LEU:HD11	3:C:124:LEU:HD21	1.98	0.45
3:C:85:PRO:HG2	3:C:87:HIS:CD2	2.49	0.45
1:A:296:LYS:HE2	1:A:362:GLU:OE2	2.17	0.45
2:B:892:SER:HA	2:B:896:TRP:CZ2	2.52	0.45
1:A:346:LYS:HE3	3:C:552:ILE:HG22	1.99	0.45
1:A:1061:LEU:HD13	1:A:1218:PHE:HE1	1.82	0.45
1:A:1227:TYR:O	1:A:1229:GLU:N	2.50	0.45
2:B:536:ASN:H	2:B:536:ASN:ND2	2.13	0.45
3:C:94:HIS:HA	3:C:95:ASN:HA	1.46	0.45
3:C:592:LYS:HE3	3:C:592:LYS:HB2	1.64	0.45
1:A:1304:VAL:HG11	3:C:168:LYS:HD3	1.99	0.44
1:A:1213:MET:HB3	1:A:1249:PHE:CZ	2.53	0.44
1:A:331:LEU:HD22	1:A:370:LEU:HD12	1.98	0.44
2:B:718:ALA:O	2:B:722:LEU:HG	2.17	0.44
3:C:79:SER:O	3:C:80:VAL:HG23	2.17	0.44
1:A:660:VAL:O	1:A:661:ARG:HG2	2.17	0.44

Continued on next page...

Continued from previous page...

Atom-1	Atom-2	Interatomic distance (Å)	Clash overlap (Å)
2:B:536:ASN:HD21	2:B:677:LEU:CD1	2.30	0.44
3:C:163:ILE:HG13	3:C:182:LYS:HZ2	1.83	0.44
3:C:687:ILE:O	3:C:691:GLU:HB2	2.18	0.44
2:B:369:ARG:HG3	2:B:394:ILE:HD11	2.00	0.43
3:C:187:VAL:HG13	3:C:285:SER:OG	2.19	0.43
3:C:654:ARG:HG2	3:C:655:TYR:H	1.84	0.43
1:A:885:GLU:O	1:A:889:ILE:HG12	2.18	0.43
2:B:593:THR:HG22	2:B:739:PHE:HE1	1.83	0.43
1:A:411:ASP:OD2	1:A:413:LYS:HB2	2.18	0.43
3:C:379:ASP:N	3:C:379:ASP:OD1	2.51	0.43
1:A:1258:ARG:HH22	3:C:493:ASN:HB3	1.83	0.43
1:A:1040:PHE:O	1:A:1044:ASN:ND2	2.51	0.43
3:C:153:PHE:CE2	3:C:154:HIS:HD2	2.36	0.43
3:C:167:ILE:HD12	3:C:167:ILE:H	1.83	0.43
3:C:189:LEU:HG	3:C:190:SER:O	2.19	0.43
2:B:233:CYS:HA	2:B:240:CYS:HB2	2.00	0.43
1:A:497:ASN:ND2	1:A:650:SER:HB3	2.34	0.43
2:B:878:ILE:CB	2:B:883:LEU:HD11	2.45	0.43
1:A:661:ARG:HA	1:A:661:ARG:HD3	1.84	0.42
1:A:739:TYR:HB3	1:A:752:LEU:HD12	2.01	0.42
2:B:892:SER:HA	2:B:896:TRP:NE1	2.34	0.42
3:C:473:ILE:HG21	3:C:473:ILE:HD13	1.73	0.42
1:A:694:VAL:HG22	1:A:870:TYR:HB3	2.00	0.42
3:C:223:SER:C	3:C:225:ASN:H	2.23	0.42
3:C:146:THR:HG23	3:C:338:LYS:HB2	2.00	0.42
3:C:542:HIS:CD2	3:C:599:LEU:HD13	2.54	0.42
3:C:92:ASN:OD1	3:C:93:ILE:HG12	2.19	0.42
1:A:1270:ILE:H	1:A:1270:ILE:HD12	1.84	0.42
1:A:745:ASN:HD21	1:A:750:LYS:NZ	2.17	0.42
1:A:694:VAL:HG23	1:A:956:MET:SD	2.59	0.42
3:C:160:PRO:HA	3:C:161:PRO:HD3	1.84	0.42
3:C:551:ASN:HB3	3:C:567:ASN:OD1	2.19	0.42
1:A:689:THR:OG1	1:A:873:LYS:HG2	2.19	0.42
2:B:272:LYS:HZ1	2:B:279:LEU:HD23	1.84	0.42
1:A:1213:MET:HB3	1:A:1249:PHE:HZ	1.83	0.42
3:C:696:LYS:HB3	3:C:696:LYS:HE3	1.92	0.42
1:A:518:GLN:O	1:A:518:GLN:HG3	2.19	0.42
1:A:506:GLU:HB3	1:A:580:LYS:HE3	2.01	0.42
1:A:1351:ARG:N	1:A:1351:ARG:HD2	2.35	0.42
2:B:870:SER:OG	2:B:870:SER:O	2.34	0.42
3:C:200:LYS:NZ	3:C:218:ILE:HG23	2.35	0.42

Continued on next page...

Continued from previous page...

Atom-1	Atom-2	Interatomic distance (Å)	Clash overlap (Å)
3:C:347:PHE:CE2	3:C:349:SER:HB2	2.54	0.42
1:A:1254:ILE:HA	1:A:1254:ILE:HD13	1.91	0.42
1:A:243:ASN:HA	1:A:244:LYS:HA	1.69	0.42
1:A:276:LEU:O	1:A:278:LEU:N	2.50	0.42
3:C:206:VAL:HG13	3:C:207:GLU:N	2.33	0.42
3:C:205:THR:N	3:C:207:GLU:OE2	2.52	0.42
1:A:167:LYS:NZ	1:A:281:HIS:HD2	2.18	0.42
1:A:174:ILE:HB	1:A:175:PRO:HD3	2.02	0.42
3:C:539:ALA:C	3:C:541:LEU:H	2.18	0.42
1:A:688:LEU:HA	1:A:688:LEU:HD23	1.91	0.41
1:A:717:TYR:HB2	1:A:718:PRO:HD2	2.02	0.41
3:C:549:ARG:HB3	3:C:567:ASN:HB2	2.01	0.41
2:B:789:LYS:O	2:B:792:THR:HG22	2.20	0.41
3:C:99:CYS:HA	3:C:102:ARG:HH11	1.85	0.41
3:C:264:LYS:HD2	3:C:264:LYS:O	2.20	0.41
3:C:454:LEU:HD12	3:C:454:LEU:O	2.20	0.41
1:A:86:GLU:HB2	1:A:111:LYS:NZ	2.35	0.41
2:B:255:LYS:HA	2:B:255:LYS:HD2	1.84	0.41
3:C:453:ILE:HD11	3:C:529:ALA:HB2	2.02	0.41
1:A:299:LEU:HD23	1:A:537:LEU:HD22	2.01	0.41
1:A:585:ILE:HB	1:A:645:ASN:O	2.19	0.41
2:B:494:LYS:HB3	2:B:494:LYS:HE2	1.81	0.41
2:B:799:LYS:O	2:B:802:LYS:HE3	2.20	0.41
3:C:215:LEU:O	3:C:219:ILE:HG12	2.20	0.41
1:A:1013:SER:HB2	1:A:1075:PHE:HE1	1.85	0.41
1:A:658:LEU:HD22	1:A:908:LEU:HD12	2.03	0.41
1:A:99:THR:HG22	1:A:105:ILE:HD11	2.02	0.41
3:C:275:LEU:HG	3:C:275:LEU:O	2.19	0.41
3:C:223:SER:OG	3:C:224:THR:N	2.54	0.41
3:C:297:PHE:HA	3:C:303:PHE:CD2	2.55	0.41
3:C:629:ILE:HG22	3:C:629:ILE:O	2.21	0.41
1:A:199:LYS:NZ	1:A:204:GLU:OE2	2.31	0.41
3:C:234:TYR:CE2	3:C:275:LEU:HD13	2.56	0.41
1:A:81:ILE:HG21	1:A:166:LEU:HG	2.02	0.41
3:C:274:ASP:OD2	3:C:274:ASP:N	2.39	0.41
3:C:256:GLU:O	3:C:260:LYS:HG2	2.20	0.41
1:A:971:MET:SD	1:A:1052:MET:HG3	2.61	0.41
1:A:295:LEU:HA	1:A:295:LEU:HD23	1.94	0.41
1:A:436:GLN:OE1	1:A:438:GLU:HB2	2.20	0.41
1:A:580:LYS:HB3	1:A:580:LYS:HE2	1.67	0.41
1:A:816:TYR:HE1	1:A:823:VAL:HG21	1.86	0.41

Continued on next page...

Continued from previous page...

Atom-1	Atom-2	Interatomic distance (Å)	Clash overlap (Å)
1:A:662:LYS:HB2	1:A:663:HIS:H	1.71	0.41
2:B:406:TYR:HD2	2:B:407:ASN:ND2	2.19	0.41
2:B:645:LEU:HB3	2:B:818:ILE:HD11	2.02	0.41
1:A:119:GLU:HG2	1:A:120:THR:H	1.85	0.40
2:B:515:HIS:CD2	2:B:516:ASP:H	2.39	0.40
3:C:200:LYS:HZ2	3:C:218:ILE:HG23	1.86	0.40
1:A:446:PHE:HB2	1:A:484:ARG:HH21	1.86	0.40
1:A:474:ASN:ND2	1:A:495:TYR:OH	2.53	0.40
1:A:543:LYS:O	1:A:546:LEU:HB3	2.21	0.40
1:A:285:HIS:HD2	1:A:288:ALA:H	1.69	0.40
2:B:883:LEU:O	2:B:887:ILE:HG12	2.21	0.40
3:C:534:ARG:HH11	3:C:534:ARG:HD2	1.74	0.40
2:B:709:LYS:HB3	2:B:709:LYS:HE2	1.92	0.40
2:B:905:ALA:O	2:B:909:VAL:HG23	2.21	0.40
3:C:282:LEU:O	3:C:286:LEU:HD13	2.20	0.40
3:C:644:LYS:HA	3:C:647:ASP:OD1	2.22	0.40
2:B:351:ILE:HD12	2:B:395:GLU:OE2	2.21	0.40
3:C:161:PRO:HB2	3:C:186:LYS:CE	2.51	0.40
3:C:292:ASP:OD1	3:C:295:LYS:NZ	2.54	0.40

There are no symmetry-related clashes.

5.3 Torsion angles [i](#)

5.3.1 Protein backbone [i](#)

In the following table, the Percentiles column shows the percent Ramachandran outliers of the chain as a percentile score with respect to all PDB entries followed by that with respect to all EM entries.

The Analysed column shows the number of residues for which the backbone conformation was analysed, and the total number of residues.

Mol	Chain	Analysed	Favoured	Allowed	Outliers	Percentiles
1	A	1161/1505 (77%)	995 (86%)	162 (14%)	4 (0%)	41 70
2	B	504/1378 (37%)	415 (82%)	82 (16%)	7 (1%)	11 34
3	C	689/897 (77%)	557 (81%)	125 (18%)	7 (1%)	15 43
All	All	2354/3780 (62%)	1967 (84%)	369 (16%)	18 (1%)	24 49

All (18) Ramachandran outliers are listed below:

Mol	Chain	Res	Type
2	B	871	CYS
3	C	540	SER
2	B	881	LYS
1	A	92	TYR
2	B	875	GLN
3	C	263	GLU
3	C	400	VAL
1	A	93	PRO
1	A	1239	PHE
2	B	348	TYR
2	B	874	SER
3	C	653	THR
1	A	1228	PHE
2	B	880	SER
3	C	157	CYS
3	C	264	LYS
2	B	349	ILE
3	C	141	PRO

5.3.2 Protein sidechains [i](#)

In the following table, the Percentiles column shows the percent sidechain outliers of the chain as a percentile score with respect to all PDB entries followed by that with respect to all EM entries.

The Analysed column shows the number of residues for which the sidechain conformation was analysed, and the total number of residues.

Mol	Chain	Analysed	Rotameric	Outliers	Percentiles	
1	A	1097/1386 (79%)	1092 (100%)	5 (0%)	88	96
2	B	483/1301 (37%)	479 (99%)	4 (1%)	81	93
3	C	658/846 (78%)	652 (99%)	6 (1%)	78	92
All	All	2238/3533 (63%)	2223 (99%)	15 (1%)	84	95

All (15) residues with a non-rotameric sidechain are listed below:

Mol	Chain	Res	Type
1	A	92	TYR
1	A	518	GLN
1	A	519	CYS
1	A	547	CYS
1	A	1352	CYS

Continued on next page...

Continued from previous page...

Mol	Chain	Res	Type
2	B	269	ARG
2	B	658	TYR
2	B	874	SER
2	B	878	ILE
3	C	263	GLU
3	C	276	CYS
3	C	474	LEU
3	C	476	ILE
3	C	536	CYS
3	C	537	SER

Sometimes sidechains can be flipped to improve hydrogen bonding and reduce clashes. All (28) such sidechains are listed below:

Mol	Chain	Res	Type
1	A	281	HIS
1	A	285	HIS
1	A	422	GLN
1	A	474	ASN
1	A	600	HIS
1	A	693	HIS
1	A	725	HIS
1	A	759	GLN
1	A	1044	ASN
1	A	1068	GLN
1	A	1255	ASN
2	B	407	ASN
2	B	515	HIS
2	B	536	ASN
2	B	700	ASN
2	B	755	HIS
2	B	875	GLN
3	C	76	HIS
3	C	87	HIS
3	C	166	ASN
3	C	181	ASN
3	C	300	ASN
3	C	330	GLN
3	C	361	ASN
3	C	481	HIS
3	C	527	ASN
3	C	542	HIS
3	C	635	HIS

5.3.3 RNA [i](#)

There are no RNA molecules in this entry.

5.4 Non-standard residues in protein, DNA, RNA chains [i](#)

There are no non-standard protein/DNA/RNA residues in this entry.

5.5 Carbohydrates [i](#)

There are no monosaccharides in this entry.

5.6 Ligand geometry [i](#)

There are no ligands in this entry.

5.7 Other polymers [i](#)

There are no such residues in this entry.

5.8 Polymer linkage issues [i](#)

There are no chain breaks in this entry.

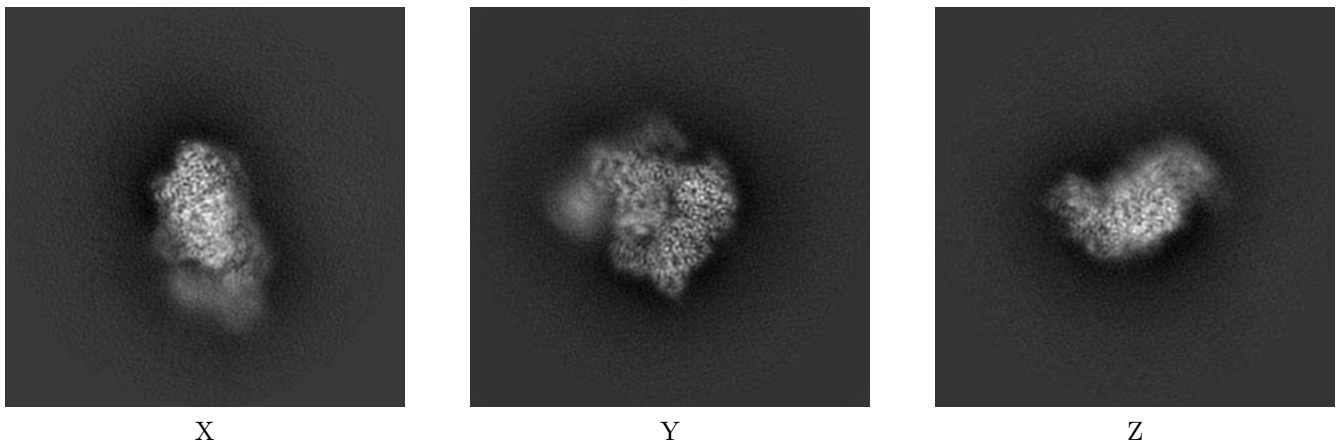
6 Map visualisation [i](#)

This section contains visualisations of the EMDB entry EMD-22890. These allow visual inspection of the internal detail of the map and identification of artifacts.

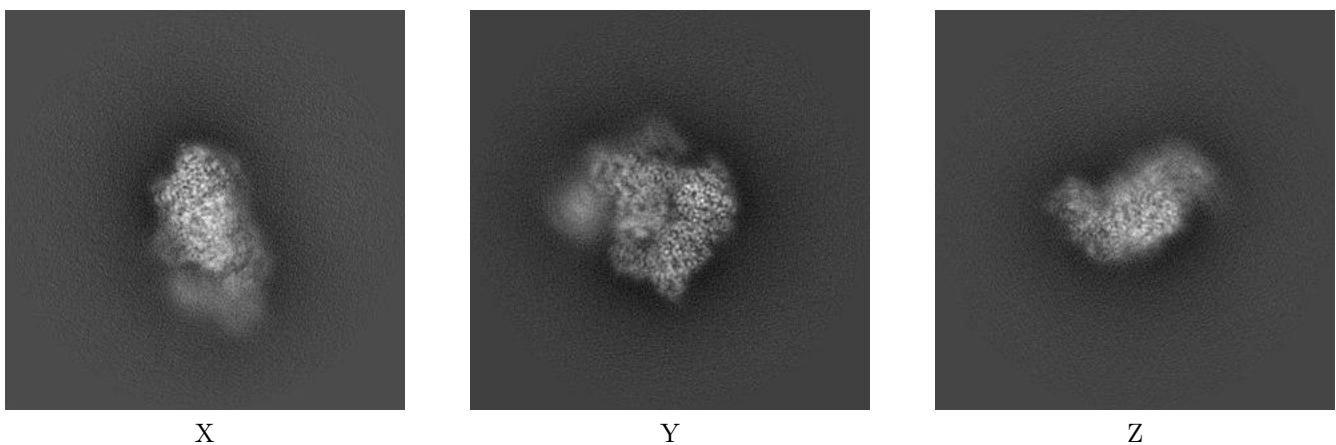
Images derived from a raw map, generated by summing the deposited half-maps, are presented below the corresponding image components of the primary map to allow further visual inspection and comparison with those of the primary map.

6.1 Orthogonal projections [i](#)

6.1.1 Primary map



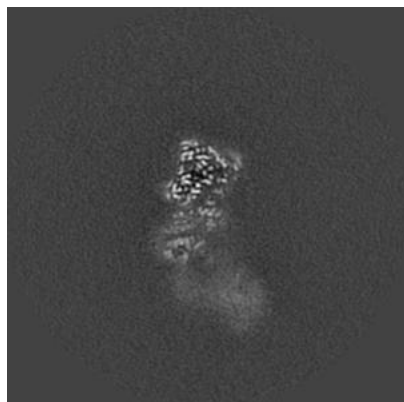
6.1.2 Raw map



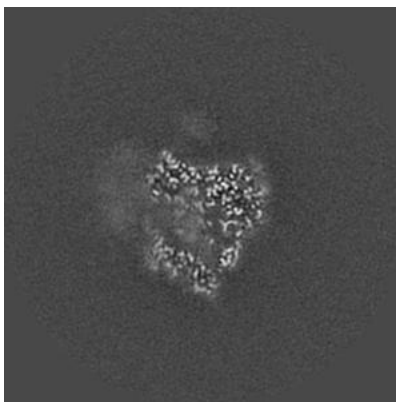
The images above show the map projected in three orthogonal directions.

6.2 Central slices [i](#)

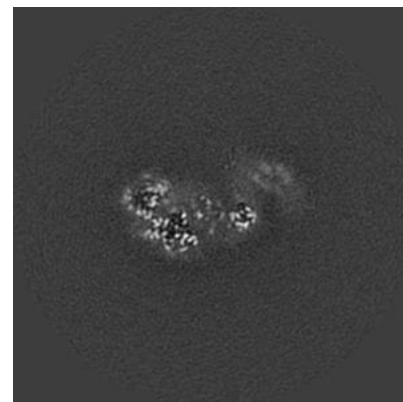
6.2.1 Primary map



X Index: 200

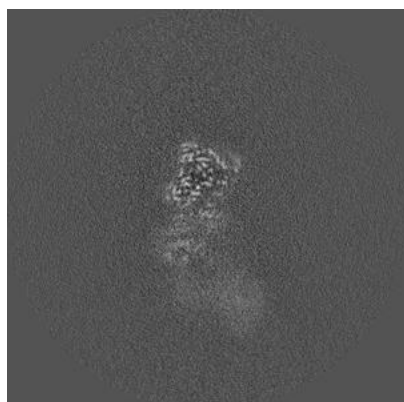


Y Index: 200

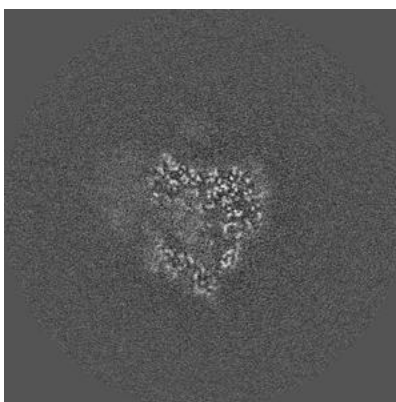


Z Index: 200

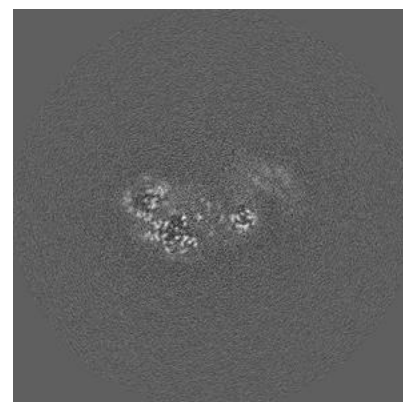
6.2.2 Raw map



X Index: 200



Y Index: 200

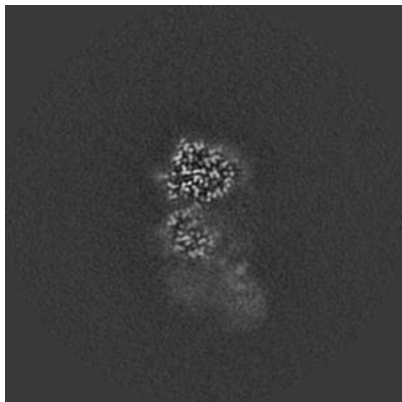


Z Index: 200

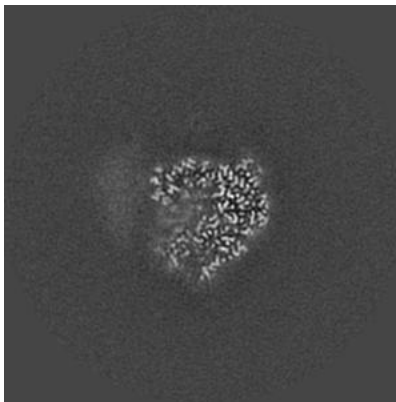
The images above show central slices of the map in three orthogonal directions.

6.3 Largest variance slices [i](#)

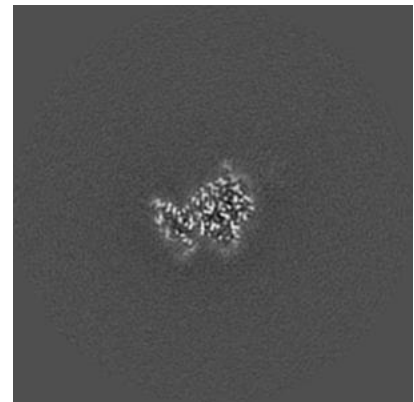
6.3.1 Primary map



X Index: 209

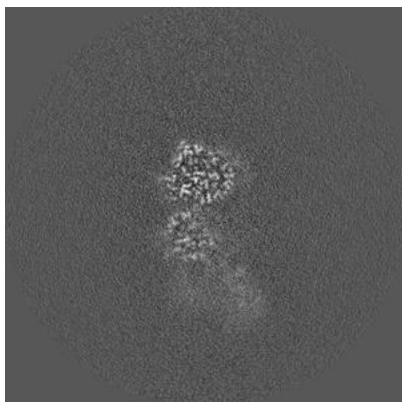


Y Index: 190

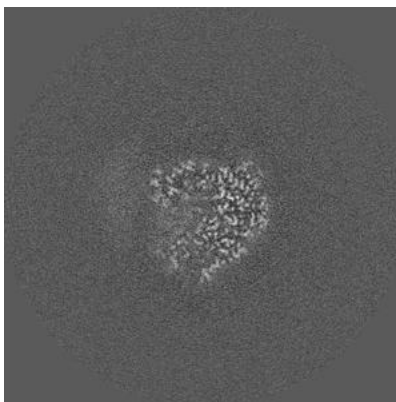


Z Index: 225

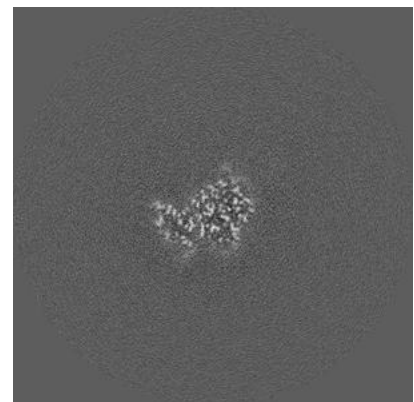
6.3.2 Raw map



X Index: 208



Y Index: 190

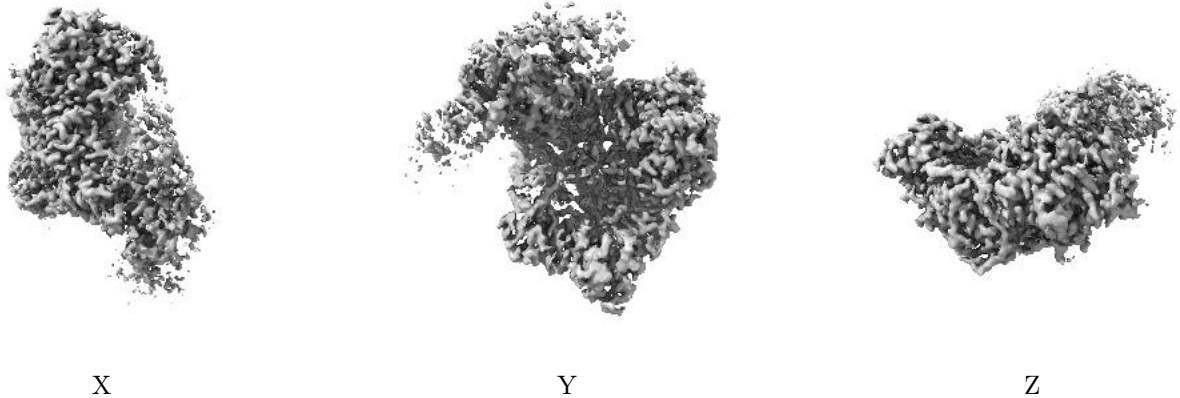


Z Index: 225

The images above show the largest variance slices of the map in three orthogonal directions.

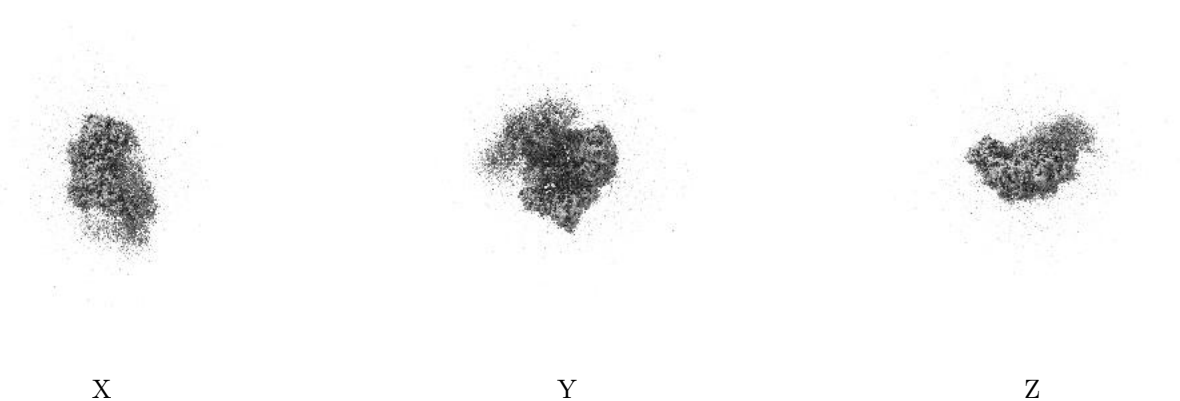
6.4 Orthogonal surface views [i](#)

6.4.1 Primary map



The images above show the 3D surface view of the map at the recommended contour level 0.01. These images, in conjunction with the slice images, may facilitate assessment of whether an appropriate contour level has been provided.

6.4.2 Raw map



These images show the 3D surface of the raw map. The raw map's contour level was selected so that its surface encloses the same volume as the primary map does at its recommended contour level.

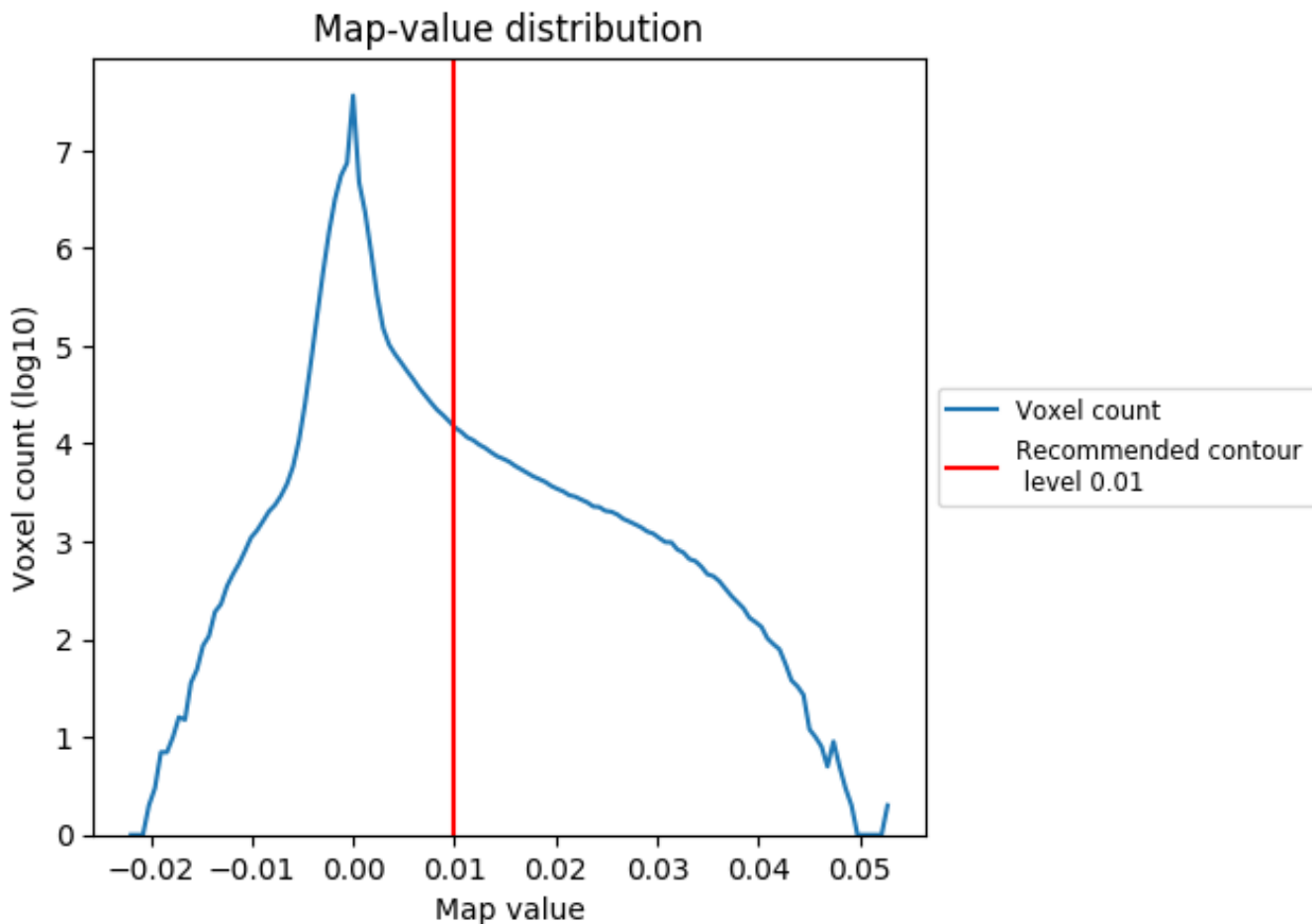
6.5 Mask visualisation [i](#)

This section was not generated. No masks/segmentation were deposited.

7 Map analysis [i](#)

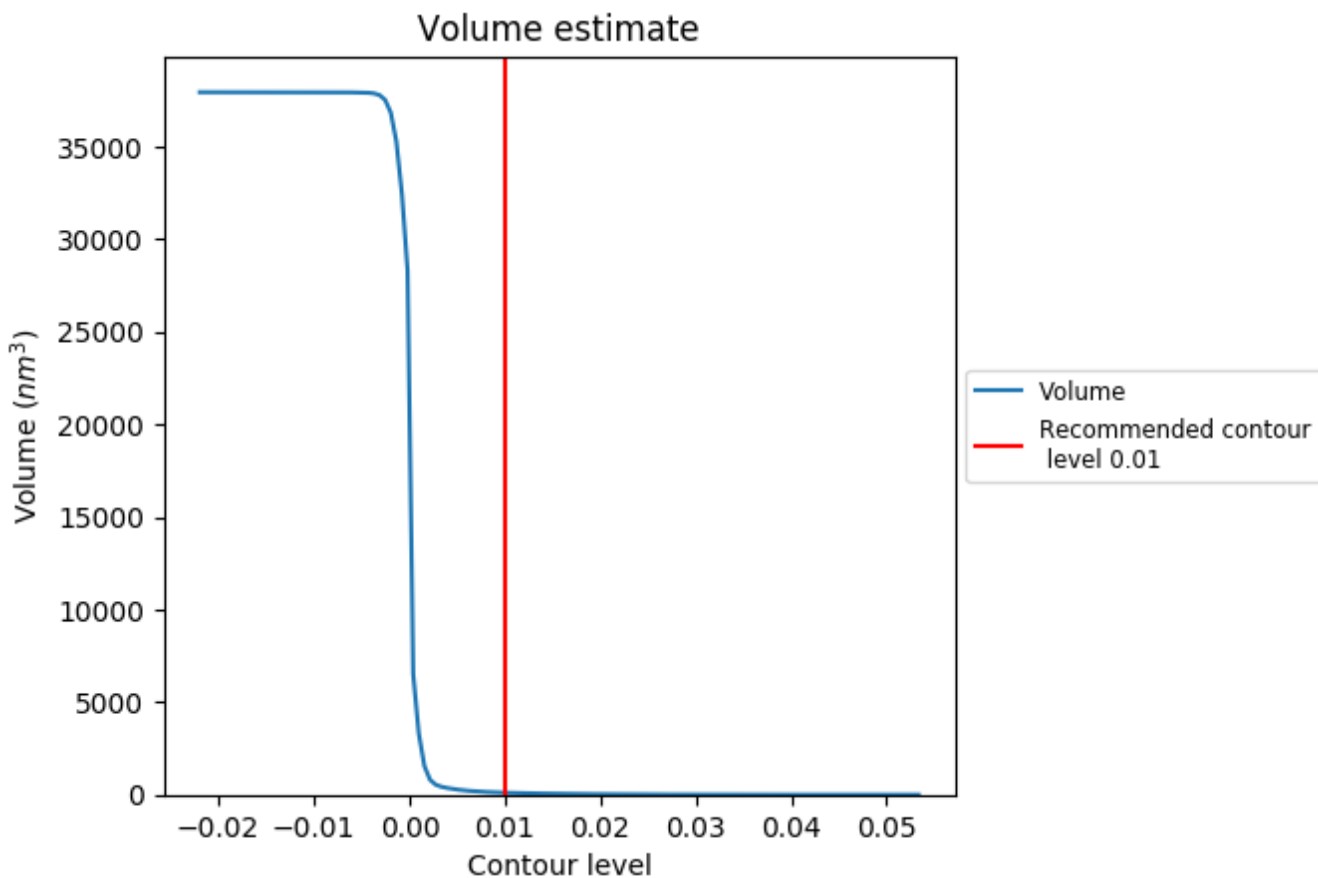
This section contains the results of statistical analysis of the map.

7.1 Map-value distribution [i](#)



The map-value distribution is plotted in 128 intervals along the x-axis. The y-axis is logarithmic. A spike in this graph at zero usually indicates that the volume has been masked.

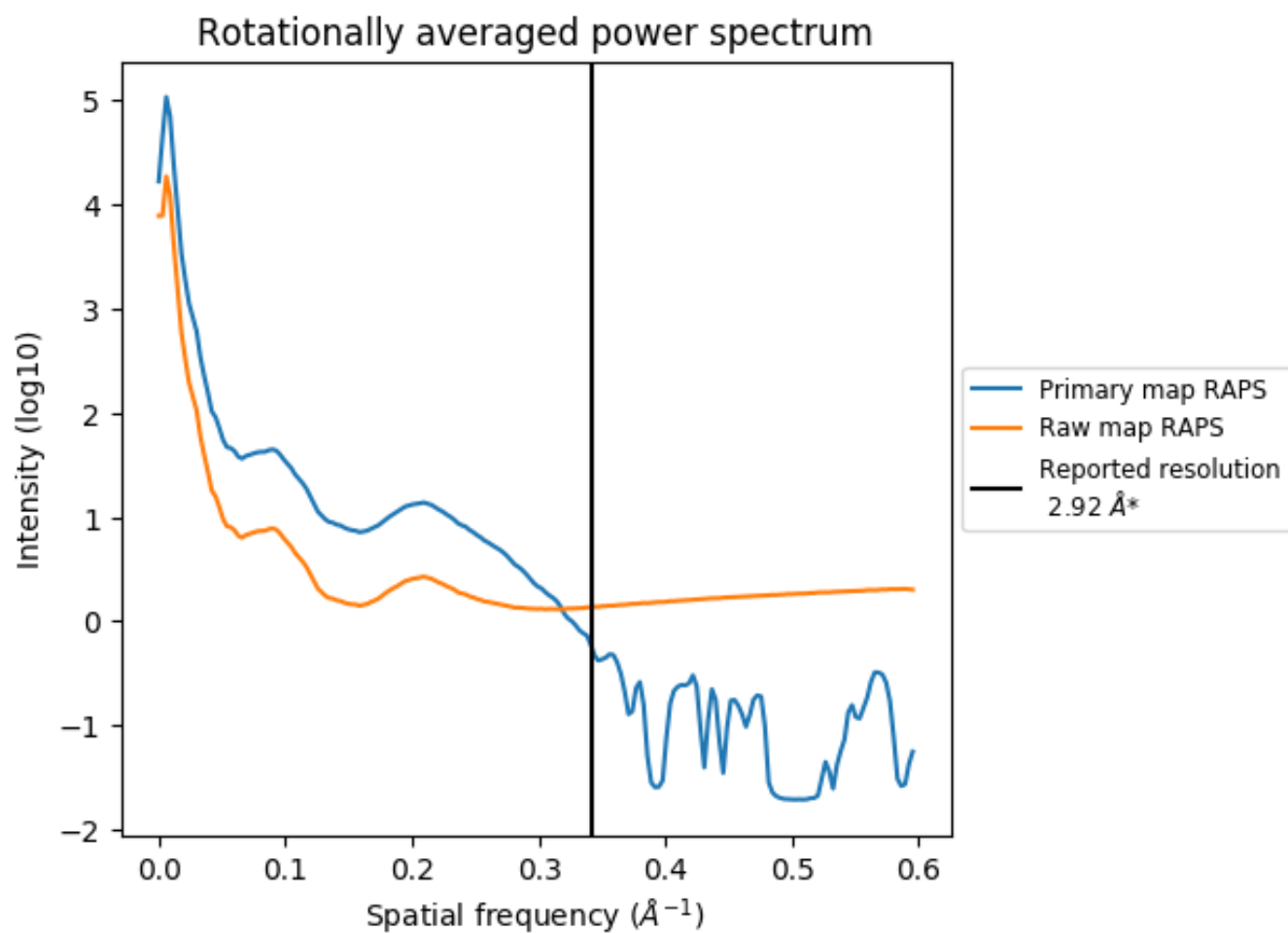
7.2 Volume estimate [i](#)



The volume at the recommended contour level is 107 nm^3 ; this corresponds to an approximate mass of 96 kDa.

The volume estimate graph shows how the enclosed volume varies with the contour level. The recommended contour level is shown as a vertical line and the intersection between the line and the curve gives the volume of the enclosed surface at the given level.

7.3 Rotationally averaged power spectrum [i](#)

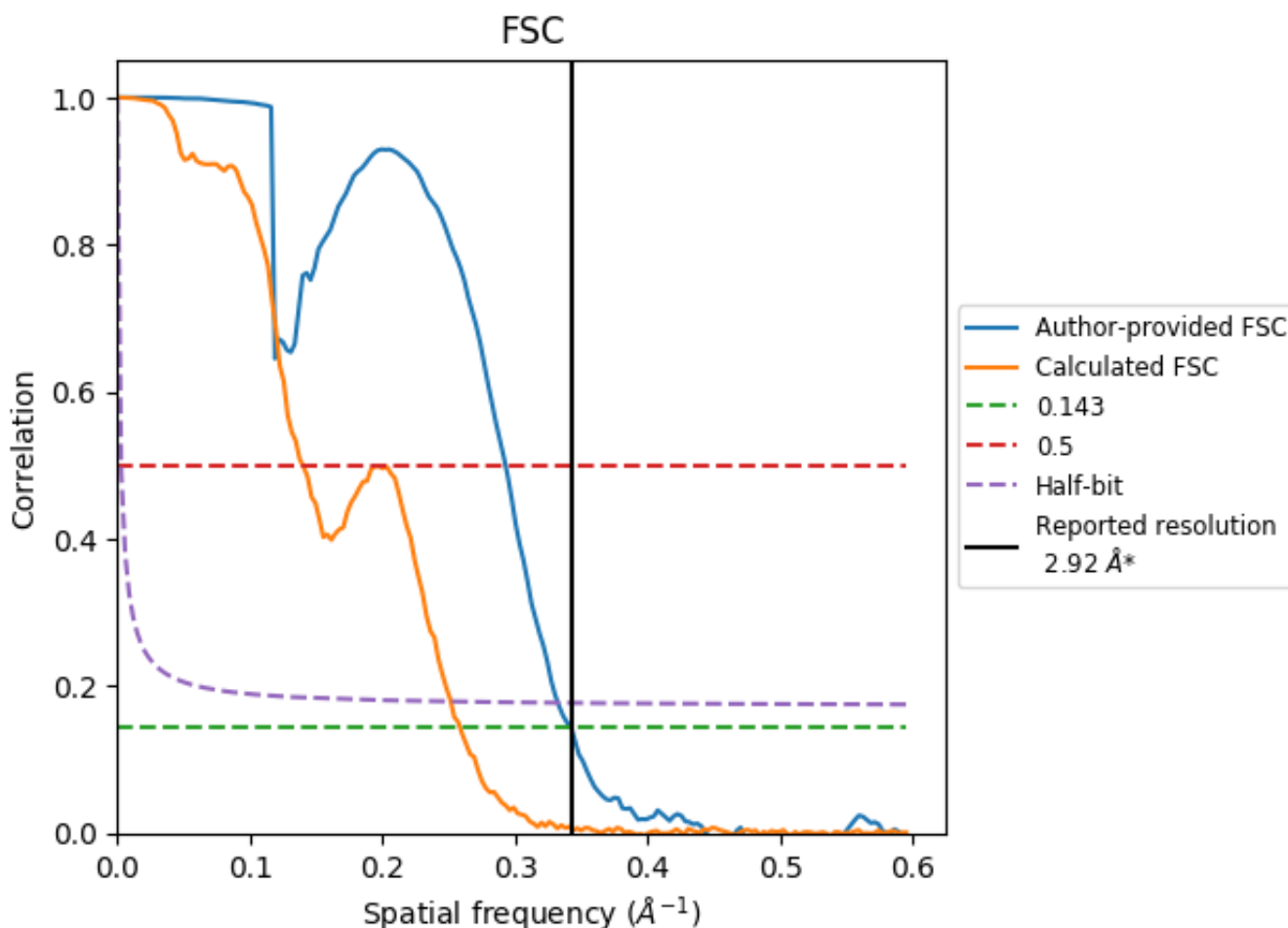


*Reported resolution corresponds to spatial frequency of 0.342 Å⁻¹

8 Fourier-Shell correlation [i](#)

Fourier-Shell Correlation (FSC) is the most commonly used method to estimate the resolution of single-particle and subtomogram-averaged maps. The shape of the curve depends on the imposed symmetry, mask and whether or not the two 3D reconstructions used were processed from a common reference. The reported resolution is shown as a black line. A curve is displayed for the half-bit criterion in addition to lines showing the 0.143 gold standard cut-off and 0.5 cut-off.

8.1 FSC [i](#)



*Reported resolution corresponds to spatial frequency of 0.342 Å⁻¹

8.2 Resolution estimates [i](#)

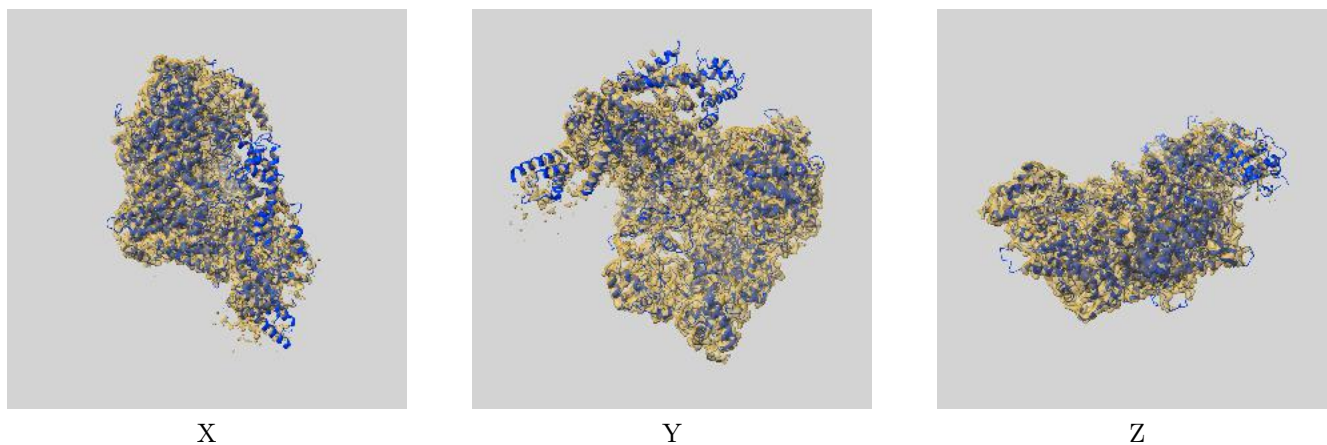
Resolution estimate (Å)	Estimation criterion (FSC cut-off)		
	0.143	0.5	Half-bit
Reported by author	2.92	-	-
Author-provided FSC curve	2.95	3.45	3.04
Calculated*	3.91	7.30	4.02

*Resolution estimate based on FSC curve calculated by comparison of deposited half-maps. The value from deposited half-maps intersecting FSC 0.143 CUT-OFF 3.91 differs from the reported value 2.92 by more than 10 %

9 Map-model fit [i](#)

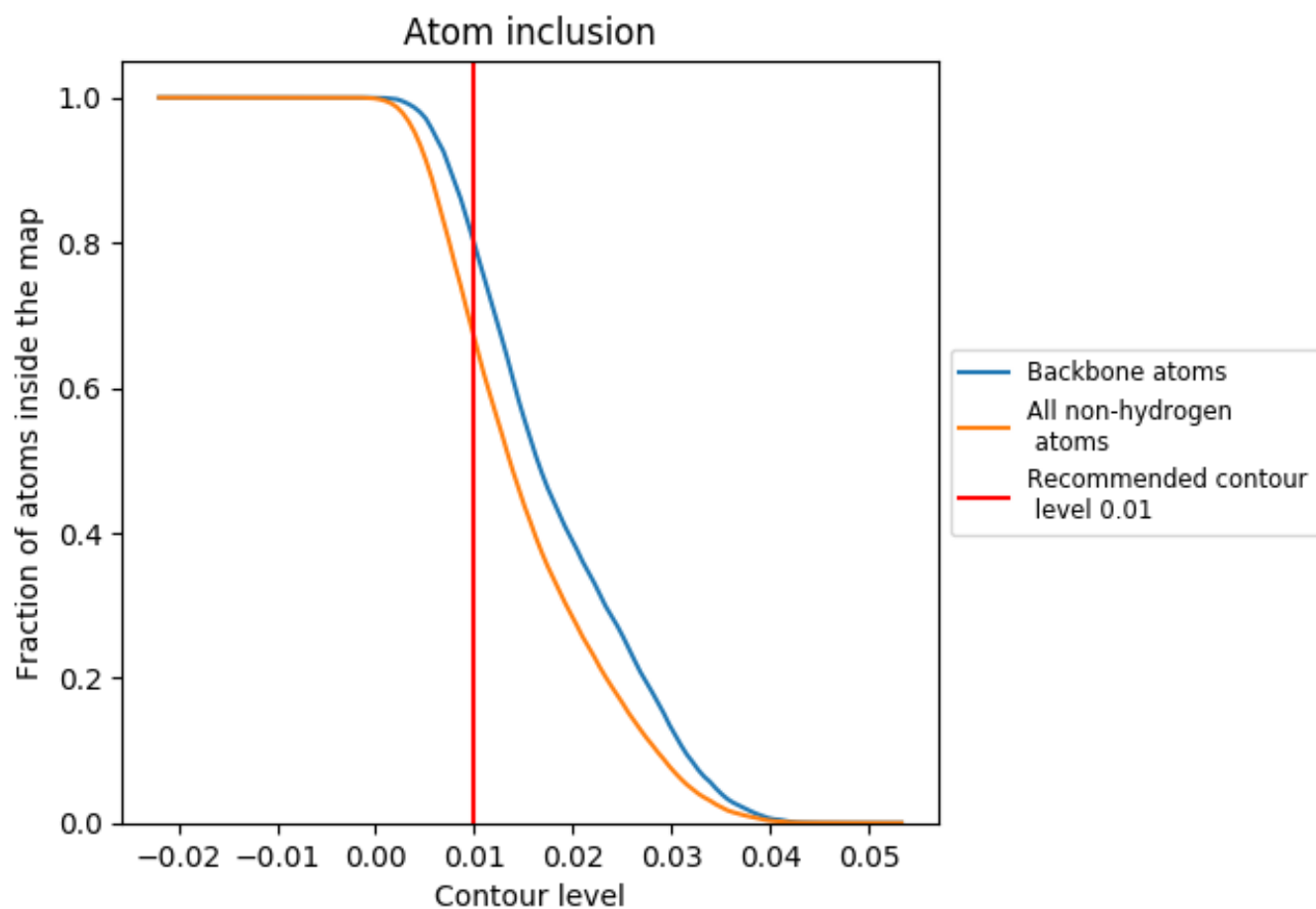
This section contains information regarding the fit between EMDB map EMD-22890 and PDB model 7KIY. Per-residue inclusion information can be found in section [3](#) on page [4](#).

9.1 Map-model overlay [i](#)



The images above show the 3D surface view of the map at the recommended contour level 0.01 at 50% transparency in yellow overlaid with a ribbon representation of the model coloured in blue. These images allow for the visual assessment of the quality of fit between the atomic model and the map.

9.2 Atom inclusion [i](#)



At the recommended contour level, 80% of all backbone atoms, 67% of all non-hydrogen atoms, are inside the map.