



Full wwPDB X-ray Structure Validation Report ⓘ

Nov 4, 2023 – 09:59 PM EDT

PDB ID : 4KNL
Title : Crystal structure of Staphylococcus aureus hydrolase AmiA in complex with its ligand
Authors : Buettner, F.M.; Stehle, T.
Deposited on : 2013-05-10
Resolution : 1.55 Å(reported)

This is a Full wwPDB X-ray Structure Validation Report for a publicly released PDB entry.

We welcome your comments at validation@mail.wwpdb.org

A user guide is available at

<https://www.wwpdb.org/validation/2017/XrayValidationReportHelp>

with specific help available everywhere you see the ⓘ symbol.

The types of validation reports are described at

<http://www.wwpdb.org/validation/2017/FAQs#types>.

The following versions of software and data (see [references ⓘ](#)) were used in the production of this report:

MolProbity : 4.02b-467
Mogul : 1.8.5 (274361), CSD as541be (2020)
Xtriage (Phenix) : 1.13
EDS : 2.36
buster-report : 1.1.7 (2018)
Percentile statistics : 20191225.v01 (using entries in the PDB archive December 25th 2019)
Refmac : 5.8.0158
CCP4 : 7.0.044 (Gargrove)
Ideal geometry (proteins) : Engh & Huber (2001)
Ideal geometry (DNA, RNA) : Parkinson et al. (1996)
Validation Pipeline (wwPDB-VP) : 2.36

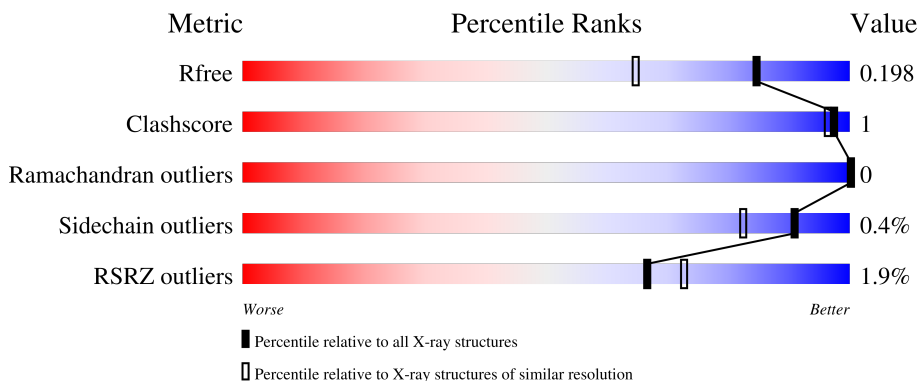
1 Overall quality at a glance

The following experimental techniques were used to determine the structure:

X-RAY DIFFRACTION

The reported resolution of this entry is 1.55 Å.

Percentile scores (ranging between 0-100) for global validation metrics of the entry are shown in the following graphic. The table shows the number of entries on which the scores are based.




Metric	Whole archive (#Entries)	Similar resolution (#Entries, resolution range(Å))
R_{free}	130704	1483 (1.56-1.56)
Clashscore	141614	1529 (1.56-1.56)
Ramachandran outliers	138981	1498 (1.56-1.56)
Sidechain outliers	138945	1495 (1.56-1.56)
RSRZ outliers	127900	1465 (1.56-1.56)

The table below summarises the geometric issues observed across the polymeric chains and their fit to the electron density. The red, orange, yellow and green segments of the lower bar indicate the fraction of residues that contain outliers for ≥ 3 , 2, 1 and 0 types of geometric quality criteria respectively. A grey segment represents the fraction of residues that are not modelled. The numeric value for each fraction is indicated below the corresponding segment, with a dot representing fractions $\leq 5\%$. The upper red bar (where present) indicates the fraction of residues that have poor fit to the electron density. The numeric value is given above the bar.

Mol	Chain	Length	Quality of chain
1	A	225	
1	B	225	
1	C	225	
1	D	225	
2	F	5	

Continued on next page...

Continued from previous page...

Mol	Chain	Length	Quality of chain
2	G	5	 60% 40%

2 Entry composition [i](#)

There are 10 unique types of molecules in this entry. The entry contains 7321 atoms, of which 0 are hydrogens and 0 are deuteriums.

In the tables below, the ZeroOcc column contains the number of atoms modelled with zero occupancy, the AltConf column contains the number of residues with at least one atom in alternate conformation and the Trace column contains the number of residues modelled with at most 2 atoms.

- Molecule 1 is a protein called Bifunctional autolysin.

Mol	Chain	Residues	Atoms					ZeroOcc	AltConf	Trace
			Total	C	N	O	S			
1	A	205	Total 1631	C 1039	N 270	O 318	S 4	0	0	0
1	B	205	Total 1630	C 1038	N 270	O 318	S 4	0	0	0
1	C	207	Total 1648	C 1048	N 274	O 322	S 4	0	1	0
1	D	204	Total 1622	C 1033	N 269	O 316	S 4	0	0	0

There are 4 discrepancies between the modelled and reference sequences:

Chain	Residue	Modelled	Actual	Comment	Reference
A	197	GLY	-	expression tag	UNP Q2FZK7
B	197	GLY	-	expression tag	UNP Q2FZK7
C	197	GLY	-	expression tag	UNP Q2FZK7
D	197	GLY	-	expression tag	UNP Q2FZK7

- Molecule 2 is a protein called Muramyl tetrapeptide.

Mol	Chain	Residues	Atoms				ZeroOcc	AltConf	Trace
			Total	C	N	O			
2	F	5	Total 32	C 19	N 7	O 6	0	0	1
2	G	5	Total 32	C 19	N 7	O 6	0	0	1

- Molecule 3 is IMIDAZOLE (three-letter code: IMD) (formula: C₃H₅N₂).



Mol	Chain	Residues	Atoms			ZeroOcc	AltConf
3	A	1	Total	C	N	0	0
			5	3	2		
3	B	1	Total	C	N	0	0
			5	3	2		
3	C	1	Total	C	N	0	0
			5	3	2		
3	D	1	Total	C	N	0	0
			5	3	2		

- Molecule 4 is SODIUM ION (three-letter code: NA) (formula: Na).

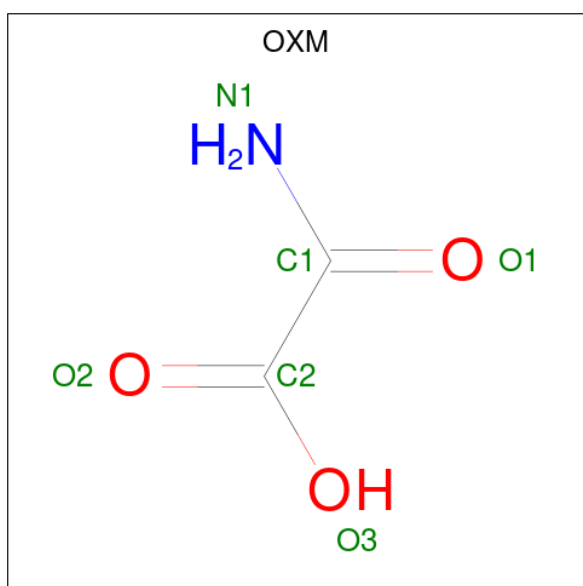
Mol	Chain	Residues	Atoms		ZeroOcc	AltConf
4	A	2	Total	Na	0	0
			2	2		
4	B	2	Total	Na	0	0
			2	2		
4	C	2	Total	Na	0	0
			2	2		
4	D	2	Total	Na	0	0
			2	2		

- Molecule 5 is FORMIC ACID (three-letter code: FMT) (formula: CH₂O₂).



Mol	Chain	Residues	Atoms			ZeroOcc	AltConf
5	A	1	Total	C	O	0	0
			3	1	2		
5	B	1	Total	C	O	0	0
			3	1	2		

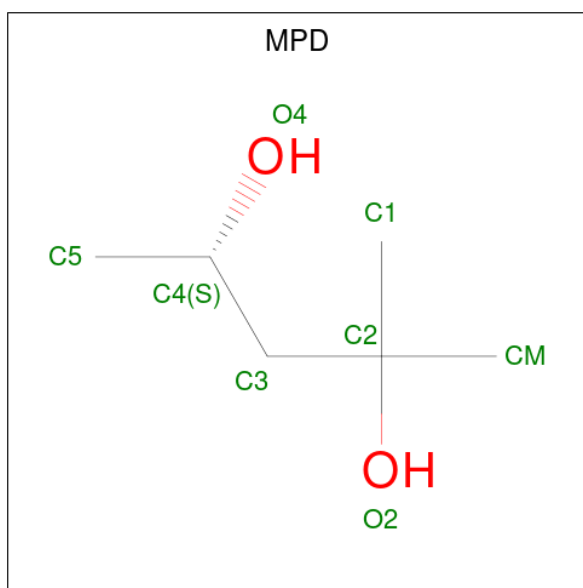
- Molecule 6 is OXAMIC ACID (three-letter code: OXM) (formula: $C_2H_3NO_3$).



Mol	Chain	Residues	Atoms				ZeroOcc	AltConf
6	B	1	Total	C	N	O	0	0
			6	2	1	3		

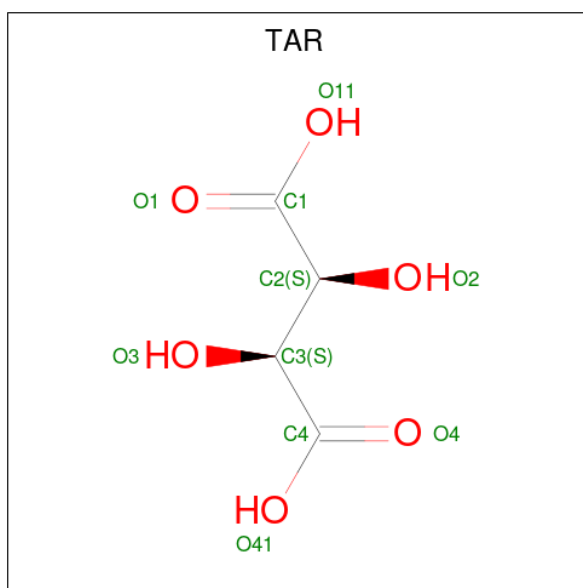
- Molecule 7 is (4S)-2-METHYL-2,4-PENTANEDIOL (three-letter code: MPD) (formula:

C₆H₁₄O₂).



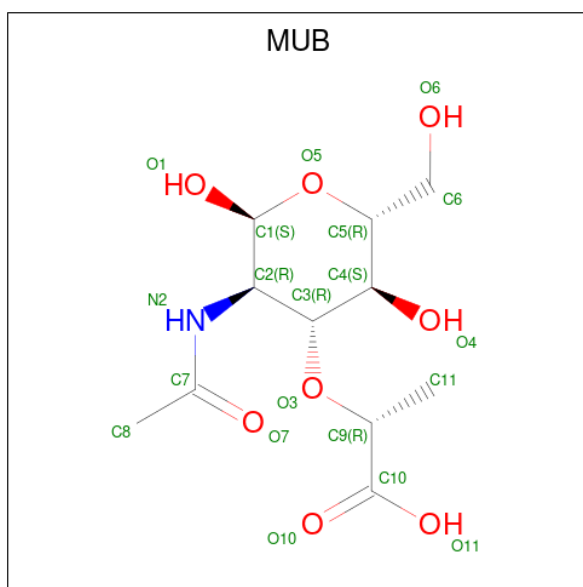
Mol	Chain	Residues	Atoms			ZeroOcc	AltConf
7	C	1	Total	C	O	0	0
			8	6	2		

- Molecule 8 is D(-)-TARTARIC ACID (three-letter code: TAR) (formula: C₄H₆O₆).



Mol	Chain	Residues	Atoms			ZeroOcc	AltConf
8	C	1	Total	C	O	0	0
			10	4	6		

- Molecule 9 is N-acetyl-alpha-muramic acid (three-letter code: MUB) (formula: C₁₁H₁₉NO₈).



Mol	Chain	Residues	Atoms				ZeroOcc	AltConf
9	F	1	Total	C	N	O	0	0
			19	11	1	7		
9	G	1	Total	C	N	O	0	0
			19	11	1	7		

- Molecule 10 is water.

Mol	Chain	Residues	Atoms		ZeroOcc	AltConf
10	A	169	Total	O	0	0
			169	169		
10	B	134	Total	O	0	0
			134	134		
10	C	174	Total	O	0	0
			174	174		
10	D	144	Total	O	0	0
			144	144		
10	F	5	Total	O	0	0
			5	5		
10	G	4	Total	O	0	0
			4	4		

3 Residue-property plots [i](#)


These plots are drawn for all protein, RNA, DNA and oligosaccharide chains in the entry. The first graphic for a chain summarises the proportions of the various outlier classes displayed in the second graphic. The second graphic shows the sequence view annotated by issues in geometry and electron density. Residues are color-coded according to the number of geometric quality criteria for which they contain at least one outlier: green = 0, yellow = 1, orange = 2 and red = 3 or more. A red dot above a residue indicates a poor fit to the electron density ($RSRZ > 2$). Stretches of 2 or more consecutive residues without any outlier are shown as a green connector. Residues present in the sample, but not in the model, are shown in grey.

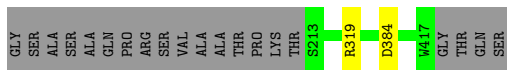
- Molecule 1: Bifunctional autolysin

Chain A:  89% 9%




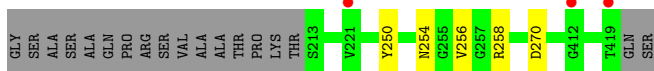
- Molecule 1: Bifunctional autolysin

Chain B:  90% 9%




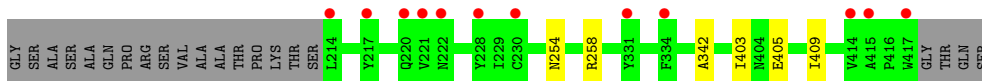
- Molecule 1: Bifunctional autolysin

Chain C:  90% 8%



- Molecule 1: Bifunctional autolysin

Chain D:  88% 9%



- Molecule 2: Muramyl tetrapeptide

Chain F:  20% 60% 20% 20%



- Molecule 2: Muramyl tetrapeptide



32	2013	15	11126
	K4		

4 Data and refinement statistics

Property	Value	Source
Space group	P 1 21 1	Depositor
Cell constants a, b, c, α , β , γ	67.81Å 82.83Å 77.43Å 90.00° 96.18° 90.00°	Depositor
Resolution (Å)	48.21 – 1.55 48.21 – 1.55	Depositor EDS
% Data completeness (in resolution range)	99.5 (48.21-1.55) 99.5 (48.21-1.55)	Depositor EDS
R_{merge}	(Not available)	Depositor
R_{sym}	(Not available)	Depositor
$\langle I/\sigma(I) \rangle$ ¹	1.94 (at 1.55Å)	Xtrriage
Refinement program	PHENIX (phenix.refine: 1.8_1069)	Depositor
R, R_{free}	0.171 , 0.198 0.172 , 0.198	Depositor DCC
R_{free} test set	6137 reflections (5.00%)	wwPDB-VP
Wilson B-factor (Å ²)	15.0	Xtrriage
Anisotropy	0.588	Xtrriage
Bulk solvent k_{sol} (e/Å ³), B_{sol} (Å ²)	0.40 , 57.4	EDS
L-test for twinning ²	$\langle L \rangle = 0.48$, $\langle L^2 \rangle = 0.31$	Xtrriage
Estimated twinning fraction	No twinning to report.	Xtrriage
F_o, F_c correlation	0.97	EDS
Total number of atoms	7321	wwPDB-VP
Average B, all atoms (Å ²)	25.0	wwPDB-VP

Xtrriage's analysis on translational NCS is as follows: *The analyses of the Patterson function reveals a significant off-origin peak that is 62.56 % of the origin peak, indicating pseudo-translational symmetry. The chance of finding a peak of this or larger height randomly in a structure without pseudo-translational symmetry is equal to 1.1055e-05. The detected translational NCS is most likely also responsible for the elevated intensity ratio.*

¹Intensities estimated from amplitudes.

²Theoretical values of $\langle |L| \rangle$, $\langle L^2 \rangle$ for acentric reflections are 0.5, 0.333 respectively for untwinned datasets, and 0.375, 0.2 for perfectly twinned datasets.

5 Model quality i

5.1 Standard geometry i

Bond lengths and bond angles in the following residue types are not validated in this section: OXM, NH2, DAL, MPD, ALY, ZGL, FMT, MUB, NA, TAR, IMD

The Z score for a bond length (or angle) is the number of standard deviations the observed value is removed from the expected value. A bond length (or angle) with $|Z| > 5$ is considered an outlier worth inspection. RMSZ is the root-mean-square of all Z scores of the bond lengths (or angles).

Mol	Chain	Bond lengths		Bond angles	
		RMSZ	# Z >5	RMSZ	# Z >5
1	A	0.65	1/1681 (0.1%)	0.72	0/2297
1	B	0.54	0/1680	0.66	0/2296
1	C	0.60	0/1701	0.70	0/2324
1	D	0.56	0/1672	0.64	0/2286
2	F	0.57	0/4	1.28	0/4
2	G	0.66	0/4	0.73	0/4
All	All	0.59	1/6742 (0.0%)	0.68	0/9211

Chiral center outliers are detected by calculating the chiral volume of a chiral center and verifying if the center is modelled as a planar moiety or with the opposite hand. A planarity outlier is detected by checking planarity of atoms in a peptide group, atoms in a mainchain group or atoms of a sidechain that are expected to be planar.

Mol	Chain	#Chirality outliers	#Planarity outliers
2	F	0	2
2	G	0	2
All	All	0	4

All (1) bond length outliers are listed below:

Mol	Chain	Res	Type	Atoms	Z	Observed(Å)	Ideal(Å)
1	A	309	SER	CB-OG	5.18	1.49	1.42

There are no bond angle outliers.

There are no chirality outliers.

All (4) planarity outliers are listed below:

Mol	Chain	Res	Type	Group
2	F	3	ZGL	Mainchain,Peptide

Continued on next page...

Continued from previous page...

Mol	Chain	Res	Type	Group
2	G	3	ZGL	Mainchain,Peptide

5.2 Too-close contacts [i](#)

In the following table, the Non-H and H(model) columns list the number of non-hydrogen atoms and hydrogen atoms in the chain respectively. The H(added) column lists the number of hydrogen atoms added and optimized by MolProbity. The Clashes column lists the number of clashes within the asymmetric unit, whereas Symm-Clashes lists symmetry-related clashes.

Mol	Chain	Non-H	H(model)	H(added)	Clashes	Symm-Clashes
1	A	1631	0	1482	3	0
1	B	1630	0	1480	1	0
1	C	1648	0	1503	3	0
1	D	1622	0	1471	3	0
2	F	32	0	26	0	0
2	G	32	0	25	1	0
3	A	5	0	5	1	0
3	B	5	0	5	0	0
3	C	5	0	5	0	0
3	D	5	0	5	0	0
4	A	2	0	0	0	0
4	B	2	0	0	0	0
4	C	2	0	0	0	0
4	D	2	0	0	0	0
5	A	3	0	1	1	0
5	B	3	0	1	1	0
6	B	6	0	2	0	0
7	C	8	0	14	2	0
8	C	10	0	4	0	0
9	F	19	0	18	0	0
9	G	19	0	18	0	0
10	A	169	0	0	0	0
10	B	134	0	0	0	0
10	C	174	0	0	0	0
10	D	144	0	0	0	0
10	F	5	0	0	0	0
10	G	4	0	0	0	0
All	All	7321	0	6065	10	0

The all-atom clashscore is defined as the number of clashes found per 1000 atoms (including hydrogen atoms). The all-atom clashscore for this structure is 1.

All (10) close contacts within the same asymmetric unit are listed below, sorted by their clash

magnitude.

Atom-1	Atom-2	Interatomic distance (Å)	Clash overlap (Å)
1:A:319:ARG:NH1	5:A:503:FMT:O1	2.30	0.61
1:B:319:ARG:NH1	5:B:503:FMT:O1	2.36	0.56
1:C:254:ASN:O	1:C:258:ARG:HD2	2.08	0.54
1:A:405:GLU:OE1	3:A:501:IMD:H5	2.09	0.51
1:C:250:TYR:CE2	7:C:503:MPD:H11	2.51	0.46
7:C:503:MPD:H4	2:G:4:ALY:HH32	1.99	0.45
1:D:254:ASN:O	1:D:258:ARG:HD2	2.17	0.45
1:A:256:VAL:HG11	1:C:256:VAL:HG11	1.98	0.44
1:D:405:GLU:O	1:D:409:ILE:HG13	2.19	0.43
1:D:342:ALA:HA	1:D:403:ILE:HG12	2.02	0.41

There are no symmetry-related clashes.

5.3 Torsion angles [i](#)

5.3.1 Protein backbone [i](#)

In the following table, the Percentiles column shows the percent Ramachandran outliers of the chain as a percentile score with respect to all X-ray entries followed by that with respect to entries of similar resolution.

The Analysed column shows the number of residues for which the backbone conformation was analysed, and the total number of residues.

Mol	Chain	Analysed	Favoured	Allowed	Outliers	Percentiles	
1	A	203/225 (90%)	196 (97%)	7 (3%)	0	100	100
1	B	203/225 (90%)	198 (98%)	5 (2%)	0	100	100
1	C	206/225 (92%)	202 (98%)	4 (2%)	0	100	100
1	D	202/225 (90%)	198 (98%)	4 (2%)	0	100	100
All	All	814/900 (90%)	794 (98%)	20 (2%)	0	100	100

There are no Ramachandran outliers to report.

5.3.2 Protein sidechains [i](#)

In the following table, the Percentiles column shows the percent sidechain outliers of the chain as a percentile score with respect to all X-ray entries followed by that with respect to entries of similar resolution.

The Analysed column shows the number of residues for which the sidechain conformation was analysed, and the total number of residues.

Mol	Chain	Analysed	Rotameric	Outliers	Percentiles	
1	A	167/188 (89%)	166 (99%)	1 (1%)	86	73
1	B	167/188 (89%)	166 (99%)	1 (1%)	86	73
1	C	170/188 (90%)	169 (99%)	1 (1%)	86	73
1	D	166/188 (88%)	166 (100%)	0	100	100
All	All	670/752 (89%)	667 (100%)	3 (0%)	91	82

All (3) residues with a non-rotameric sidechain are listed below:

Mol	Chain	Res	Type
1	A	384	ASP
1	B	384	ASP
1	C	270	ASP

Sometimes sidechains can be flipped to improve hydrogen bonding and reduce clashes. There are no such sidechains identified.

5.3.3 RNA [i](#)

There are no RNA molecules in this entry.

5.4 Non-standard residues in protein, DNA, RNA chains [i](#)

6 non-standard protein/DNA/RNA residues are modelled in this entry.

In the following table, the Counts columns list the number of bonds (or angles) for which Mogul statistics could be retrieved, the number of bonds (or angles) that are observed in the model and the number of bonds (or angles) that are defined in the Chemical Component Dictionary. The Link column lists molecule types, if any, to which the group is linked. The Z score for a bond length (or angle) is the number of standard deviations the observed value is removed from the expected value. A bond length (or angle) with $|Z| > 2$ is considered an outlier worth inspection. RMSZ is the root-mean-square of all Z scores of the bond lengths (or angles).

Mol	Type	Chain	Res	Link	Bond lengths			Bond angles		
					Counts	RMSZ	# Z > 2	Counts	RMSZ	# Z > 2
2	ZGL	G	3	2	8,8,9	0.47	0	7,9,11	0.93	1 (14%)
2	ALY	F	4	2	10,11,12	2.11	3 (30%)	7,12,14	0.87	0
2	ALY	G	4	2	10,11,12	2.24	3 (30%)	7,12,14	0.89	0
2	ZGL	F	3	2	8,8,9	0.53	0	7,9,11	1.20	1 (14%)

In the following table, the Chirals column lists the number of chiral outliers, the number of chiral centers analysed, the number of these observed in the model and the number defined in the Chemical Component Dictionary. Similar counts are reported in the Torsion and Rings columns. '-' means no outliers of that kind were identified.

Mol	Type	Chain	Res	Link	Chirals	Torsions	Rings
2	ZGL	G	3	2	-	0/7/8/9	-
2	ALY	F	4	2	-	2/9/10/12	-
2	ALY	G	4	2	-	2/9/10/12	-
2	ZGL	F	3	2	-	0/7/8/9	-

All (6) bond length outliers are listed below:

Mol	Chain	Res	Type	Atoms	Z	Observed(Å)	Ideal(Å)
2	G	4	ALY	OH-CH	5.11	1.34	1.23
2	F	4	ALY	OH-CH	5.04	1.34	1.23
2	G	4	ALY	CH-NZ	-3.32	1.24	1.34
2	F	4	ALY	CH-NZ	-3.24	1.24	1.34
2	G	4	ALY	CB-CA	-3.04	1.49	1.53
2	F	4	ALY	CB-CA	-2.32	1.50	1.53

All (2) bond angle outliers are listed below:

Mol	Chain	Res	Type	Atoms	Z	Observed(°)	Ideal(°)
2	F	3	ZGL	CB-CG-C	-2.59	104.92	112.29
2	G	3	ZGL	CB-CG-C	-2.30	105.75	112.29

There are no chirality outliers.

All (4) torsion outliers are listed below:

Mol	Chain	Res	Type	Atoms
2	G	4	ALY	OH-CH-NZ-CE
2	G	4	ALY	CH3-CH-NZ-CE
2	F	4	ALY	OH-CH-NZ-CE
2	F	4	ALY	CH3-CH-NZ-CE

There are no ring outliers.

1 monomer is involved in 1 short contact:

Mol	Chain	Res	Type	Clashes	Symm-Clashes
2	G	4	ALY	1	0

5.5 Carbohydrates [i](#)

There are no monosaccharides in this entry.

5.6 Ligand geometry [i](#)

Of 19 ligands modelled in this entry, 8 are monoatomic - leaving 11 for Mogul analysis.

In the following table, the Counts columns list the number of bonds (or angles) for which Mogul statistics could be retrieved, the number of bonds (or angles) that are observed in the model and the number of bonds (or angles) that are defined in the Chemical Component Dictionary. The Link column lists molecule types, if any, to which the group is linked. The Z score for a bond length (or angle) is the number of standard deviations the observed value is removed from the expected value. A bond length (or angle) with $|Z| > 2$ is considered an outlier worth inspection. RMSZ is the root-mean-square of all Z scores of the bond lengths (or angles).

Mol	Type	Chain	Res	Link	Bond lengths			Bond angles		
					Counts	RMSZ	# Z > 2	Counts	RMSZ	# Z > 2
5	FMT	B	503	-	2,2,2	0.66	0	1,1,1	0.17	0
3	IMD	B	501	-	3,5,5	0.38	0	4,5,5	0.71	0
7	MPD	C	503	-	7,7,7	0.25	0	9,10,10	0.84	0
5	FMT	A	503	-	2,2,2	0.65	0	1,1,1	0.09	0
6	OXM	B	505	-	5,5,5	2.81	2 (40%)	4,6,6	2.53	2 (50%)
9	MUB	F	1	2	18,19,20	0.97	1 (5%)	21,26,28	1.37	3 (14%)
9	MUB	G	1	2	18,19,20	1.04	2 (11%)	21,26,28	1.17	2 (9%)
8	TAR	C	504	-	9,9,9	1.41	1 (11%)	12,12,12	1.87	4 (33%)
3	IMD	D	501	-	3,5,5	0.43	0	4,5,5	0.58	0
3	IMD	A	501	-	3,5,5	0.38	0	4,5,5	0.68	0
3	IMD	C	501	-	3,5,5	0.43	0	4,5,5	0.68	0

In the following table, the Chirals column lists the number of chiral outliers, the number of chiral centers analysed, the number of these observed in the model and the number defined in the Chemical Component Dictionary. Similar counts are reported in the Torsion and Rings columns. '-' means no outliers of that kind were identified.

Mol	Type	Chain	Res	Link	Chirals	Torsions	Rings
7	MPD	C	503	-	-	1/5/5/5	-
3	IMD	B	501	-	-	-	0/1/1/1
6	OXM	B	505	-	-	0/3/4/4	-
9	MUB	F	1	2	-	4/10/32/34	0/1/1/1
9	MUB	G	1	2	-	0/10/32/34	0/1/1/1
8	TAR	C	504	-	-	6/12/12/12	-
3	IMD	D	501	-	-	-	0/1/1/1

Continued on next page...

Continued from previous page...

Mol	Type	Chain	Res	Link	Chirals	Torsions	Rings
3	IMD	A	501	-	-	-	0/1/1/1
3	IMD	C	501	-	-	-	0/1/1/1

All (6) bond length outliers are listed below:

Mol	Chain	Res	Type	Atoms	Z	Observed(Å)	Ideal(Å)
6	B	505	OXM	C1-C2	-4.85	1.49	1.55
6	B	505	OXM	C1-N1	3.67	1.43	1.33
9	G	1	MUB	O5-C5	-2.39	1.38	1.44
9	F	1	MUB	O5-C5	-2.25	1.38	1.44
9	G	1	MUB	O4-C4	-2.05	1.38	1.43
8	C	504	TAR	O2-C2	-2.04	1.38	1.42

All (11) bond angle outliers are listed below:

Mol	Chain	Res	Type	Atoms	Z	Observed(°)	Ideal(°)
6	B	505	OXM	O3-C2-C1	4.07	123.25	113.84
8	C	504	TAR	O11-C1-O1	-2.95	117.39	124.09
8	C	504	TAR	O41-C4-O4	-2.85	117.63	124.09
8	C	504	TAR	O11-C1-C2	2.67	120.49	113.27
8	C	504	TAR	O41-C4-C3	2.51	120.05	113.27
9	F	1	MUB	C1-C2-N2	2.43	113.54	110.73
6	B	505	OXM	O2-C2-C1	-2.39	116.74	122.06
9	G	1	MUB	C3-C4-C5	2.21	114.37	109.66
9	G	1	MUB	O5-C5-C4	2.03	113.38	109.69
9	F	1	MUB	O5-C1-C2	2.01	111.54	109.52
9	F	1	MUB	O7-C7-N2	2.01	125.64	121.95

There are no chirality outliers.

All (11) torsion outliers are listed below:

Mol	Chain	Res	Type	Atoms
8	C	504	TAR	O1-C1-C2-O2
8	C	504	TAR	O11-C1-C2-O2
8	C	504	TAR	C2-C3-C4-O4
8	C	504	TAR	C2-C3-C4-O41
9	F	1	MUB	C4-C5-C6-O6
8	C	504	TAR	O3-C3-C4-O4
8	C	504	TAR	O3-C3-C4-O41
9	F	1	MUB	O5-C5-C6-O6
7	C	503	MPD	O2-C2-C3-C4

Continued on next page...

Continued from previous page...

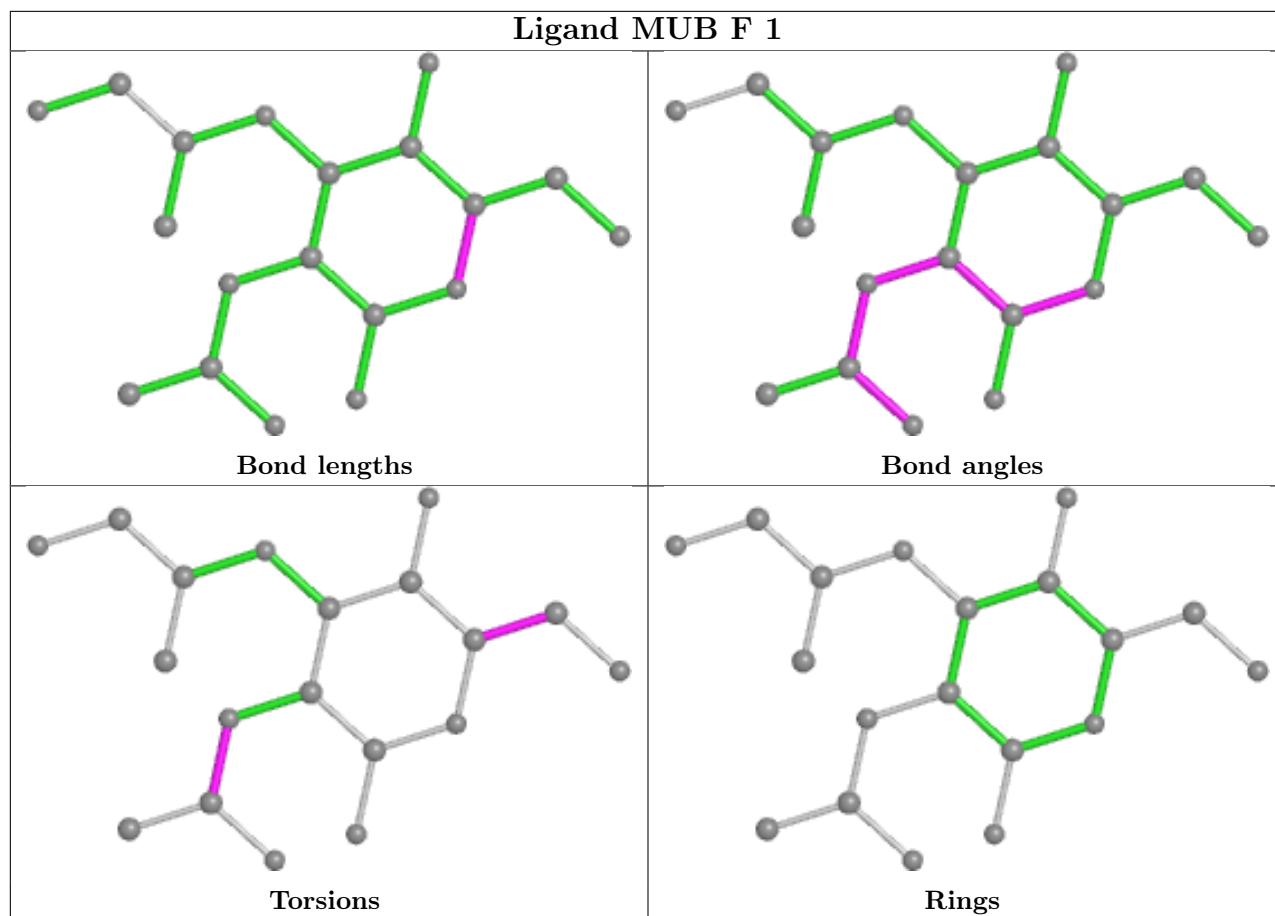
Mol	Chain	Res	Type	Atoms
9	F	1	MUB	C8-C7-N2-C2
9	F	1	MUB	O7-C7-N2-C2

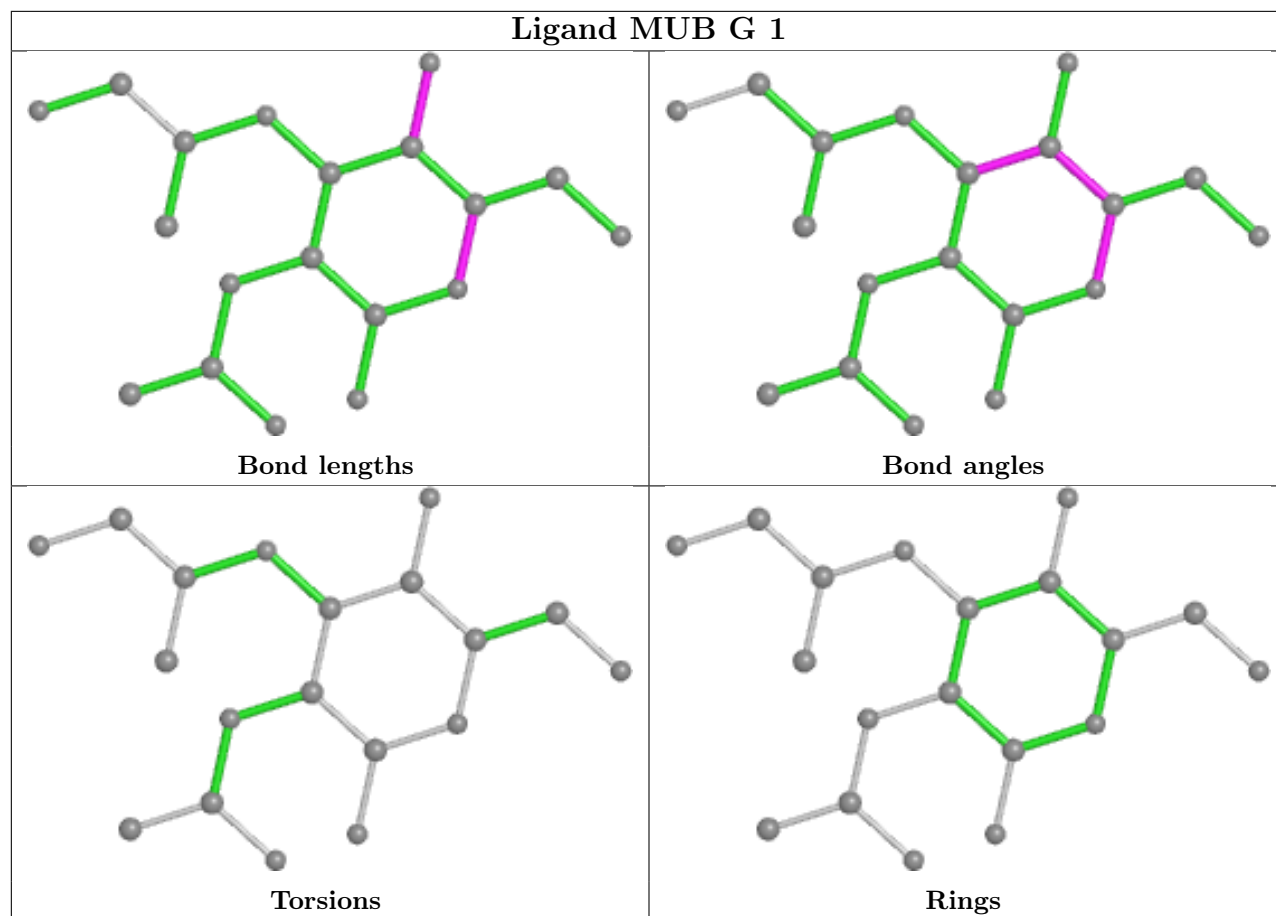
There are no ring outliers.

4 monomers are involved in 5 short contacts:

Mol	Chain	Res	Type	Clashes	Symm-Clashes
5	B	503	FMT	1	0
7	C	503	MPD	2	0
5	A	503	FMT	1	0
3	A	501	IMD	1	0

The following is a two-dimensional graphical depiction of Mogul quality analysis of bond lengths, bond angles, torsion angles, and ring geometry for all instances of the Ligand of Interest. In addition, ligands with molecular weight > 250 and outliers as shown on the validation Tables will also be included. For torsion angles, if less than 5% of the Mogul distribution of torsion angles is within 10 degrees of the torsion angle in question, then that torsion angle is considered an outlier. Any bond that is central to one or more torsion angles identified as an outlier by Mogul will be highlighted in the graph. For rings, the root-mean-square deviation (RMSD) between the ring in question and similar rings identified by Mogul is calculated over all ring torsion angles. If the average RMSD is greater than 60 degrees and the minimal RMSD between the ring in question and any Mogul-identified rings is also greater than 60 degrees, then that ring is considered an outlier. The outliers are highlighted in purple. The color gray indicates Mogul did not find sufficient equivalents in the CSD to analyse the geometry.





5.7 Other polymers [i](#)

There are no such residues in this entry.

5.8 Polymer linkage issues [i](#)

There are no chain breaks in this entry.

6 Fit of model and data

6.1 Protein, DNA and RNA chains

In the following table, the column labelled ‘#RSRZ> 2’ contains the number (and percentage) of RSRZ outliers, followed by percent RSRZ outliers for the chain as percentile scores relative to all X-ray entries and entries of similar resolution. The OWAB column contains the minimum, median, 95th percentile and maximum values of the occupancy-weighted average B-factor per residue. The column labelled ‘Q< 0.9’ lists the number of (and percentage) of residues with an average occupancy less than 0.9.

Mol	Chain	Analysed	<RSRZ>	#RSRZ>2	OWAB(Å ²)	Q<0.9
1	A	205/225 (91%)	-0.26	0 100 100	14, 19, 32, 50	0
1	B	205/225 (91%)	-0.05	0 100 100	16, 27, 44, 53	0
1	C	207/225 (92%)	-0.05	3 (1%) 75 80	14, 20, 36, 51	0
1	D	204/225 (90%)	0.28	12 (5%) 22 26	16, 25, 45, 59	0
2	F	1/5 (20%)	2.37	1 (100%) 0 0	35, 35, 35, 35	0
2	G	1/5 (20%)	0.29	0 100 100	39, 39, 39, 39	0
All	All	823/910 (90%)	-0.02	16 (1%) 66 73	14, 23, 42, 59	0

All (16) RSRZ outliers are listed below:

Mol	Chain	Res	Type	RSRZ
1	D	417	TRP	5.2
1	D	222	ASN	3.6
1	D	415	ALA	3.4
1	D	221	VAL	3.4
1	D	214	LEU	3.3
1	C	221	VAL	3.2
1	D	414	VAL	2.9
1	D	228	TYR	2.6
1	C	412	GLY	2.4
2	F	2	ALA	2.4
1	D	334	PHE	2.2
1	D	220	GLN	2.2
1	D	217	TYR	2.2
1	D	230	CYS	2.1
1	D	331	TYR	2.1
1	C	419	THR	2.1

6.2 Non-standard residues in protein, DNA, RNA chains [i](#)

In the following table, the Atoms column lists the number of modelled atoms in the group and the number defined in the chemical component dictionary. The B-factors column lists the minimum, median, 95th percentile and maximum values of B factors of atoms in the group. The column labelled 'Q< 0.9' lists the number of atoms with occupancy less than 0.9.

Mol	Type	Chain	Res	Atoms	RSCC	RSR	B-factors(Å ²)	Q<0.9
2	ALY	G	4	12/13	0.92	0.10	19,25,48,55	0
2	ZGL	F	3	9/10	0.93	0.10	19,26,33,35	0
2	ZGL	G	3	9/10	0.93	0.10	17,25,36,37	0
2	ALY	F	4	12/13	0.94	0.09	18,23,41,44	0
2	DAL	G	5	5/6	0.95	0.10	27,28,31,34	0
2	DAL	F	5	5/6	0.96	0.08	26,27,29,30	0

6.3 Carbohydrates [i](#)

There are no monosaccharides in this entry.

6.4 Ligands [i](#)

In the following table, the Atoms column lists the number of modelled atoms in the group and the number defined in the chemical component dictionary. The B-factors column lists the minimum, median, 95th percentile and maximum values of B factors of atoms in the group. The column labelled 'Q< 0.9' lists the number of atoms with occupancy less than 0.9.

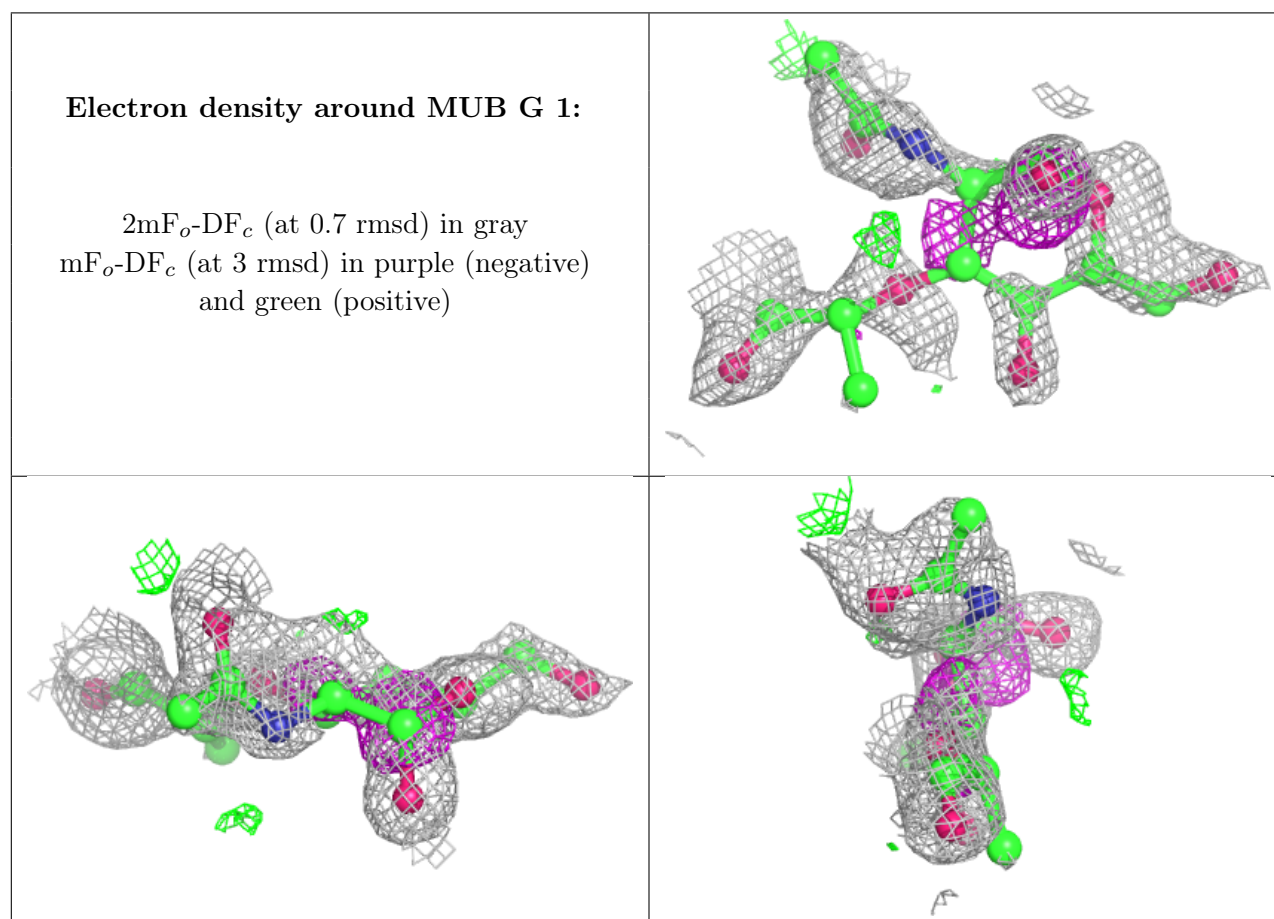
Mol	Type	Chain	Res	Atoms	RSCC	RSR	B-factors(Å ²)	Q<0.9
9	MUB	G	1	19/20	0.63	0.32	39,54,60,61	0
9	MUB	F	1	19/20	0.66	0.28	31,40,46,47	0
3	IMD	D	501	5/5	0.83	0.29	44,45,47,48	0
8	TAR	C	504	10/10	0.84	0.16	18,32,37,41	10
7	MPD	C	503	8/8	0.85	0.18	32,37,48,52	0
3	IMD	B	501	5/5	0.88	0.28	36,37,40,42	0
5	FMT	A	503	3/3	0.90	0.18	36,36,41,44	0
6	OXM	B	505	6/6	0.90	0.18	28,39,51,53	0
3	IMD	A	501	5/5	0.90	0.19	29,33,35,37	0
5	FMT	B	503	3/3	0.91	0.23	38,38,40,44	0
3	IMD	C	501	5/5	0.91	0.25	36,36,39,40	0
4	NA	B	504	1/1	0.94	0.09	33,33,33,33	0
4	NA	A	504	1/1	0.97	0.07	27,27,27,27	0
4	NA	D	503	1/1	0.98	0.07	22,22,22,22	0
4	NA	B	502	1/1	0.98	0.05	25,25,25,25	0
4	NA	C	502	1/1	0.98	0.06	24,24,24,24	0

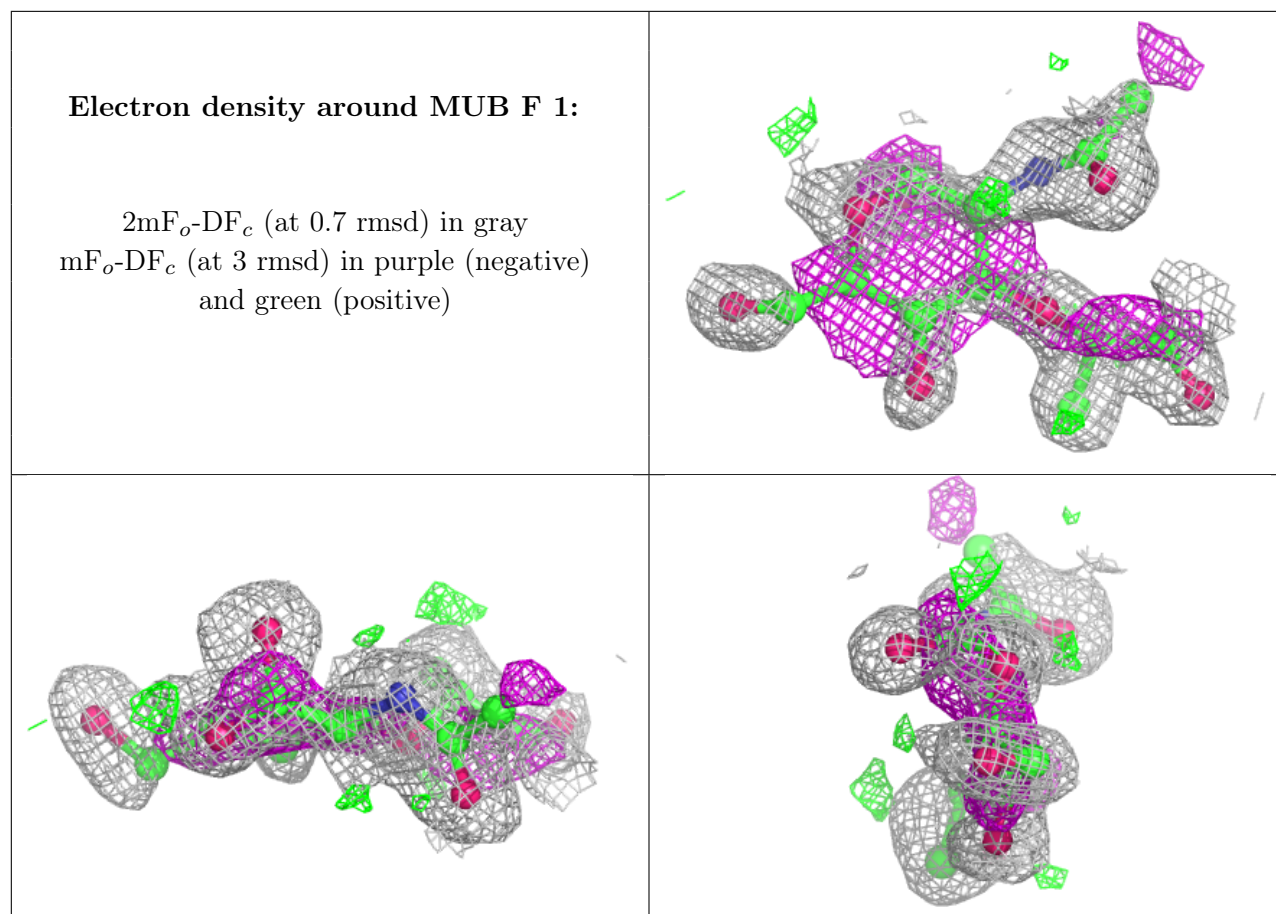
Continued on next page...

Continued from previous page...

Mol	Type	Chain	Res	Atoms	RSCC	RSR	B-factors(\AA^2)	Q<0.9
4	NA	D	502	1/1	0.98	0.04	29,29,29,29	0
4	NA	C	505	1/1	0.99	0.07	19,19,19,19	0
4	NA	A	502	1/1	0.99	0.04	22,22,22,22	0

The following is a graphical depiction of the model fit to experimental electron density of all instances of the Ligand of Interest. In addition, ligands with molecular weight > 250 and outliers as shown on the geometry validation Tables will also be included. Each fit is shown from different orientation to approximate a three-dimensional view.





6.5 Other polymers [i](#)

There are no such residues in this entry.