



Full wwPDB X-ray Structure Validation Report ⓘ

Aug 22, 2020 – 02:57 PM BST

PDB ID : 5KPO
Title : Structure of human PARP1 catalytic domain bound to a quinazoline-2,4(1H,3H)-dione inhibitor
Authors : Cao, R.; Wang, Y.L.; Zhou, J.; Yao, H.P.; Huang, N.; Xu, B.L.
Deposited on : 2016-07-05
Resolution : 2.65 Å(reported)

This is a Full wwPDB X-ray Structure Validation Report for a publicly released PDB entry.

We welcome your comments at validation@mail.wwpdb.org

A user guide is available at

<https://www.wwpdb.org/validation/2017/XrayValidationReportHelp>

with specific help available everywhere you see the ⓘ symbol.

The following versions of software and data (see [references ⓘ](#)) were used in the production of this report:

MolProbity : 4.02b-467
Mogul : 1.8.5 (274361), CSD as541be (2020)
Xtriage (Phenix) : 1.13
EDS : 2.13.1
buster-report : 1.1.7 (2018)
Percentile statistics : 20191225.v01 (using entries in the PDB archive December 25th 2019)
Refmac : 5.8.0158
CCP4 : 7.0.044 (Gargrove)
Ideal geometry (proteins) : Engh & Huber (2001)
Ideal geometry (DNA, RNA) : Parkinson et al. (1996)
Validation Pipeline (wwPDB-VP) : 2.13.1

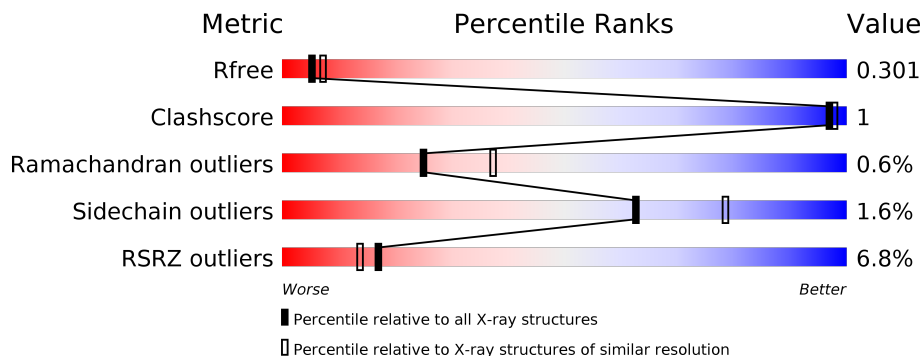
1 Overall quality at a glance

The following experimental techniques were used to determine the structure:

X-RAY DIFFRACTION

The reported resolution of this entry is 2.65 Å.

Percentile scores (ranging between 0-100) for global validation metrics of the entry are shown in the following graphic. The table shows the number of entries on which the scores are based.



Metric	Whole archive (#Entries)	Similar resolution (#Entries, resolution range(Å))
R_{free}	130704	1332 (2.68-2.64)
Clashscore	141614	1374 (2.68-2.64)
Ramachandran outliers	138981	1349 (2.68-2.64)
Sidechain outliers	138945	1349 (2.68-2.64)
RSRZ outliers	127900	1318 (2.68-2.64)

The table below summarises the geometric issues observed across the polymeric chains and their fit to the electron density. The red, orange, yellow and green segments on the lower bar indicate the fraction of residues that contain outliers for ≥ 3 , 2, 1 and 0 types of geometric quality criteria respectively. A grey segment represents the fraction of residues that are not modelled. The numeric value for each fraction is indicated below the corresponding segment, with a dot representing fractions $\leq 5\%$. The upper red bar (where present) indicates the fraction of residues that have poor fit to the electron density. The numeric value is given above the bar.

Mol	Chain	Length	Quality of chain
1	A	352	
1	B	352	

2 Entry composition [i](#)

There are 2 unique types of molecules in this entry. The entry contains 5599 atoms, of which 0 are hydrogens and 0 are deuteriums.

In the tables below, the ZeroOcc column contains the number of atoms modelled with zero occupancy, the AltConf column contains the number of residues with at least one atom in alternate conformation and the Trace column contains the number of residues modelled with at most 2 atoms.

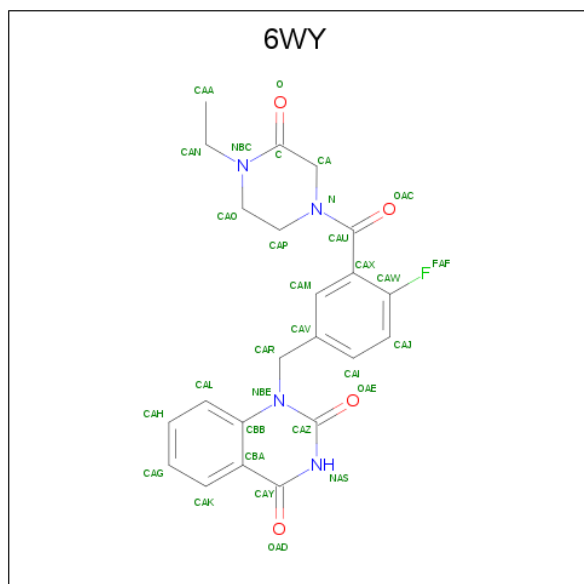
- Molecule 1 is a protein called Poly [ADP-ribose] polymerase 1.

Mol	Chain	Residues	Atoms					ZeroOcc	AltConf	Trace
			Total	C	N	O	S			
1	A	351	Total 2773	C 1763	N 470	O 527	S 13	0	3	0
1	B	350	Total 2764	C 1757	N 468	O 526	S 13	0	3	0

There are 6 discrepancies between the modelled and reference sequences:

Chain	Residue	Modelled	Actual	Comment	Reference
A	660	HIS	-	expression tag	UNP P09874
A	661	MET	-	expression tag	UNP P09874
A	762	ALA	VAL	engineered mutation	UNP P09874
B	660	HIS	-	expression tag	UNP P09874
B	661	MET	-	expression tag	UNP P09874
B	762	ALA	VAL	engineered mutation	UNP P09874

- Molecule 2 is 1-[[3-(4-ethyl-3-oxidanylidene-piperazin-1-yl)carbonyl-4-fluoranyl-phenyl]methyl]quinazoline-2,4-dione (three-letter code: 6WY) (formula: C₂₂H₂₁FN₄O₄).

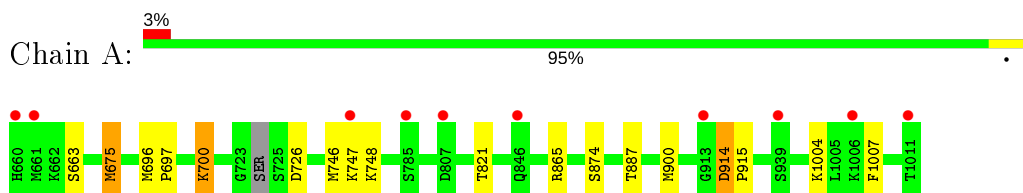


Mol	Chain	Residues	Atoms					ZeroOcc	AltConf
2	A	1	Total	C	F	N	O	0	0
			31	22	1	4	4		
2	B	1	Total	C	F	N	O	0	0
			31	22	1	4	4		

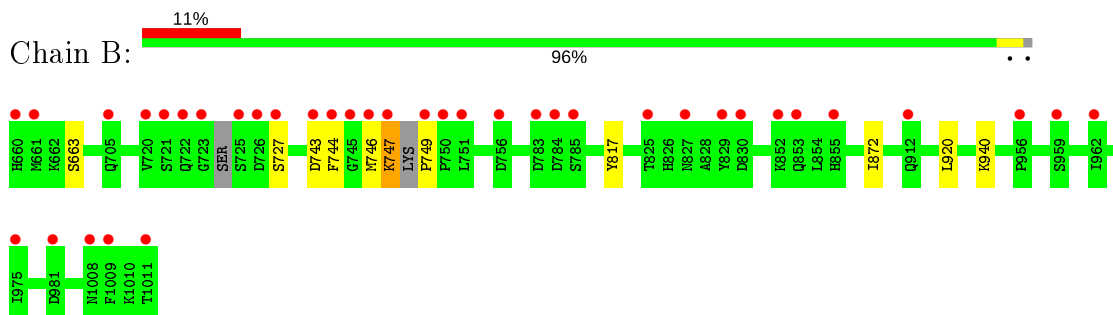
3 Residue-property plots [i](#)

These plots are drawn for all protein, RNA, DNA and oligosaccharide chains in the entry. The first graphic for a chain summarises the proportions of the various outlier classes displayed in the second graphic. The second graphic shows the sequence view annotated by issues in geometry and electron density. Residues are color-coded according to the number of geometric quality criteria for which they contain at least one outlier: green = 0, yellow = 1, orange = 2 and red = 3 or more. A red dot above a residue indicates a poor fit to the electron density ($RSRZ > 2$). Stretches of 2 or more consecutive residues without any outlier are shown as a green connector. Residues present in the sample, but not in the model, are shown in grey.

- Molecule 1: Poly [ADP-ribose] polymerase 1



- Molecule 1: Poly [ADP-ribose] polymerase 1



4 Data and refinement statistics

Property	Value	Source
Space group	P 21 21 21	Depositor
Cell constants a, b, c, α , β , γ	48.34Å 92.36Å 163.44Å 90.00° 90.00° 90.00°	Depositor
Resolution (Å)	81.72 – 2.65 81.72 – 2.65	Depositor EDS
% Data completeness (in resolution range)	99.8 (81.72-2.65) 99.8 (81.72-2.65)	Depositor EDS
R_{merge}	(Not available)	Depositor
R_{sym}	(Not available)	Depositor
$\langle I/\sigma(I) \rangle$ ¹	5.94 (at 2.65Å)	Xtrriage
Refinement program	REFMAC 5.8.0123	Depositor
R, R_{free}	0.238 , 0.303 0.239 , 0.301	Depositor DCC
R_{free} test set	1087 reflections (4.94%)	wwPDB-VP
Wilson B-factor (Å ²)	38.3	Xtrriage
Anisotropy	0.524	Xtrriage
Bulk solvent k_{sol} (e/Å ³), B_{sol} (Å ²)	0.36 , 30.3	EDS
L-test for twinning ²	$\langle L \rangle = 0.47$, $\langle L^2 \rangle = 0.30$	Xtrriage
Estimated twinning fraction	No twinning to report.	Xtrriage
F_o, F_c correlation	0.90	EDS
Total number of atoms	5599	wwPDB-VP
Average B, all atoms (Å ²)	41.0	wwPDB-VP

Xtrriage's analysis on translational NCS is as follows: *The largest off-origin peak in the Patterson function is 4.20% of the height of the origin peak. No significant pseudotranslation is detected.*

¹Intensities estimated from amplitudes.

²Theoretical values of $\langle |L| \rangle$, $\langle L^2 \rangle$ for acentric reflections are 0.5, 0.333 respectively for untwinned datasets, and 0.375, 0.2 for perfectly twinned datasets.

5 Model quality [i](#)

5.1 Standard geometry [i](#)

Bond lengths and bond angles in the following residue types are not validated in this section: 6WY

The Z score for a bond length (or angle) is the number of standard deviations the observed value is removed from the expected value. A bond length (or angle) with $|Z| > 5$ is considered an outlier worth inspection. RMSZ is the root-mean-square of all Z scores of the bond lengths (or angles).

Mol	Chain	Bond lengths		Bond angles	
		RMSZ	# $ Z > 5$	RMSZ	# $ Z > 5$
1	A	0.43	3/2837 (0.1%)	0.61	0/3827
1	B	0.37	0/2827	0.59	1/3812 (0.0%)
All	All	0.40	3/5664 (0.1%)	0.60	1/7639 (0.0%)

Chiral center outliers are detected by calculating the chiral volume of a chiral center and verifying if the center is modelled as a planar moiety or with the opposite hand. A planarity outlier is detected by checking planarity of atoms in a peptide group, atoms in a mainchain group or atoms of a sidechain that are expected to be planar.

Mol	Chain	#Chirality outliers	#Planarity outliers
1	A	0	2
1	B	0	2
All	All	0	4

All (3) bond length outliers are listed below:

Mol	Chain	Res	Type	Atoms	Z	Observed(Å)	Ideal(Å)
1	A	914	ASP	CA-CB	6.82	1.69	1.53
1	A	914	ASP	CA-C	6.18	1.69	1.52
1	A	914	ASP	N-CA	6.17	1.58	1.46

All (1) bond angle outliers are listed below:

Mol	Chain	Res	Type	Atoms	Z	Observed(°)	Ideal(°)
1	B	747	LYS	N-CA-C	5.18	124.98	111.00

There are no chirality outliers.

All (4) planarity outliers are listed below:

Mol	Chain	Res	Type	Group
1	A	746	MET	Peptide
1	A	747	LYS	Peptide
1	B	743	ASP	Peptide
1	B	746	MET	Peptide

5.2 Too-close contacts

In the following table, the Non-H and H(model) columns list the number of non-hydrogen atoms and hydrogen atoms in the chain respectively. The H(added) column lists the number of hydrogen atoms added and optimized by MolProbity. The Clashes column lists the number of clashes within the asymmetric unit, whereas Symm-Clashes lists symmetry related clashes.

Mol	Chain	Non-H	H(model)	H(added)	Clashes	Symm-Clashes
1	A	2773	0	2806	5	0
1	B	2764	0	2793	5	0
2	A	31	0	0	0	0
2	B	31	0	0	0	0
All	All	5599	0	5599	10	0

The all-atom clashscore is defined as the number of clashes found per 1000 atoms (including hydrogen atoms). The all-atom clashscore for this structure is 1.

All (10) close contacts within the same asymmetric unit are listed below, sorted by their clash magnitude.

Atom-1	Atom-2	Interatomic distance (Å)	Clash overlap (Å)
1:B:744:PHE:HB2	1:B:747:LYS:HB3	1.71	0.70
1:B:744:PHE:HB2	1:B:747:LYS:CB	2.41	0.45
1:B:744:PHE:CB	1:B:747:LYS:HB3	2.42	0.44
1:B:747:LYS:HB2	1:B:749:PRO:HD3	2.00	0.42
1:A:675:MET:HE1	1:A:1004:LYS:HD2	2.01	0.42
1:B:872:ILE:HG21	1:B:920:LEU:HD11	2.01	0.42
1:A:915:PRO:CB	1:A:1007:PHE:HB2	2.50	0.41
1:A:697:PRO:HG2	1:A:700:LYS:HD3	2.04	0.40
1:A:821:THR:HB	1:A:900:MET:HA	2.03	0.40
1:A:915:PRO:HB2	1:A:1007:PHE:HB2	2.03	0.40

There are no symmetry-related clashes.

5.3 Torsion angles [i](#)

5.3.1 Protein backbone [i](#)

In the following table, the Percentiles column shows the percent Ramachandran outliers of the chain as a percentile score with respect to all X-ray entries followed by that with respect to entries of similar resolution.

The Analysed column shows the number of residues for which the backbone conformation was analysed, and the total number of residues.

Mol	Chain	Analysed	Favoured	Allowed	Outliers	Percentiles	
1	A	350/352 (99%)	338 (97%)	9 (3%)	3 (1%)	17	26
1	B	347/352 (99%)	336 (97%)	10 (3%)	1 (0%)	41	56
All	All	697/704 (99%)	674 (97%)	19 (3%)	4 (1%)	25	37

All (4) Ramachandran outliers are listed below:

Mol	Chain	Res	Type
1	A	914	ASP
1	A	663	SER
1	B	663	SER
1	A	748	LYS

5.3.2 Protein sidechains [i](#)

In the following table, the Percentiles column shows the percent sidechain outliers of the chain as a percentile score with respect to all X-ray entries followed by that with respect to entries of similar resolution.

The Analysed column shows the number of residues for which the sidechain conformation was analysed, and the total number of residues.

Mol	Chain	Analysed	Rotameric	Outliers	Percentiles	
1	A	311/309 (101%)	304 (98%)	7 (2%)	50	68
1	B	310/309 (100%)	307 (99%)	3 (1%)	76	86
All	All	621/618 (100%)	611 (98%)	10 (2%)	62	78

All (10) residues with a non-rotameric sidechain are listed below:

Mol	Chain	Res	Type
1	A	675	MET
1	A	696	MET

Continued on next page...

Continued from previous page...

Mol	Chain	Res	Type
1	A	700	LYS
1	A	726	ASP
1	A	865	ARG
1	A	874	SER
1	A	887	THR
1	B	727	SER
1	B	817	TYR
1	B	940	LYS

Some sidechains can be flipped to improve hydrogen bonding and reduce clashes. All (3) such sidechains are listed below:

Mol	Chain	Res	Type
1	A	846	GLN
1	A	998	ASN
1	B	998	ASN

5.3.3 RNA [i](#)

There are no RNA molecules in this entry.

5.4 Non-standard residues in protein, DNA, RNA chains [i](#)

There are no non-standard protein/DNA/RNA residues in this entry.

5.5 Carbohydrates [i](#)

There are no monosaccharides in this entry.

5.6 Ligand geometry [i](#)

2 ligands are modelled in this entry.

In the following table, the Counts columns list the number of bonds (or angles) for which Mogul statistics could be retrieved, the number of bonds (or angles) that are observed in the model and the number of bonds (or angles) that are defined in the Chemical Component Dictionary. The Link column lists molecule types, if any, to which the group is linked. The Z score for a bond length (or angle) is the number of standard deviations the observed value is removed from the expected value. A bond length (or angle) with $|Z| > 2$ is considered an outlier worth inspection. RMSZ is the root-mean-square of all Z scores of the bond lengths (or angles).

Mol	Type	Chain	Res	Link	Bond lengths			Bond angles		
					Counts	RMSZ	# Z > 2	Counts	RMSZ	# Z > 2
2	6WY	B	1101	-	31,34,34	2.03	5 (16%)	41,49,49	2.42	8 (19%)
2	6WY	A	1101	-	31,34,34	1.91	4 (12%)	41,49,49	2.72	14 (34%)

In the following table, the Chirals column lists the number of chiral outliers, the number of chiral centers analysed, the number of these observed in the model and the number defined in the Chemical Component Dictionary. Similar counts are reported in the Torsion and Rings columns. '-' means no outliers of that kind were identified.

Mol	Type	Chain	Res	Link	Chirals	Torsions	Rings
2	6WY	B	1101	-	-	2/14/27/27	0/4/4/4
2	6WY	A	1101	-	-	4/14/27/27	0/4/4/4

All (9) bond length outliers are listed below:

Mol	Chain	Res	Type	Atoms	Z	Observed(Å)	Ideal(Å)
2	B	1101	6WY	CAX-CAU	-6.63	1.40	1.50
2	A	1101	6WY	CAX-CAU	-6.57	1.40	1.50
2	B	1101	6WY	CA-C	-5.34	1.41	1.51
2	A	1101	6WY	CA-C	-4.85	1.42	1.51
2	B	1101	6WY	CAR-CAV	-4.12	1.41	1.51
2	B	1101	6WY	CAY-NAS	3.60	1.39	1.33
2	A	1101	6WY	CAY-NAS	3.36	1.38	1.33
2	A	1101	6WY	CAR-CAV	-3.18	1.43	1.51
2	B	1101	6WY	CBB-NBE	-2.22	1.37	1.40

All (22) bond angle outliers are listed below:

Mol	Chain	Res	Type	Atoms	Z	Observed(°)	Ideal(°)
2	A	1101	6WY	CBA-CAY-NAS	-8.52	118.46	124.40
2	B	1101	6WY	CBA-CAY-NAS	-8.49	118.48	124.40
2	A	1101	6WY	CAY-NAS-CAZ	6.86	120.93	115.14
2	B	1101	6WY	CAY-NAS-CAZ	6.18	120.36	115.14
2	B	1101	6WY	CAK-CBA-CBB	6.09	120.71	117.96
2	A	1101	6WY	CAK-CBA-CBB	5.99	120.66	117.96
2	A	1101	6WY	CAO-NBC-C	-5.33	118.19	123.71
2	A	1101	6WY	CAO-NBC-CAN	4.09	124.40	116.79
2	A	1101	6WY	O-C-NBC	-4.07	118.60	122.82
2	B	1101	6WY	CA-C-NBC	3.82	123.81	118.12
2	B	1101	6WY	O-C-NBC	-3.62	119.06	122.82
2	B	1101	6WY	CAJ-CAW-CAX	-3.51	119.29	123.11
2	A	1101	6WY	CA-C-NBC	3.41	123.18	118.12

Continued on next page...

Continued from previous page...

Mol	Chain	Res	Type	Atoms	Z	Observed(°)	Ideal(°)
2	A	1101	6WY	CAJ-CAW-CAX	-3.13	119.70	123.11
2	A	1101	6WY	CAX-CAU-N	3.06	123.17	118.28
2	B	1101	6WY	CAR-NBE-CBB	2.93	124.23	120.13
2	A	1101	6WY	CAP-CAO-NBC	-2.60	104.87	110.44
2	A	1101	6WY	CAR-NBE-CBB	2.45	123.56	120.13
2	B	1101	6WY	C-CA-N	-2.39	111.93	115.30
2	A	1101	6WY	CAM-CAX-CAW	2.32	119.48	116.66
2	A	1101	6WY	CAL-CBB-CBA	-2.25	117.06	120.01
2	A	1101	6WY	CAR-CAV-CAM	2.24	123.72	120.25

There are no chirality outliers.

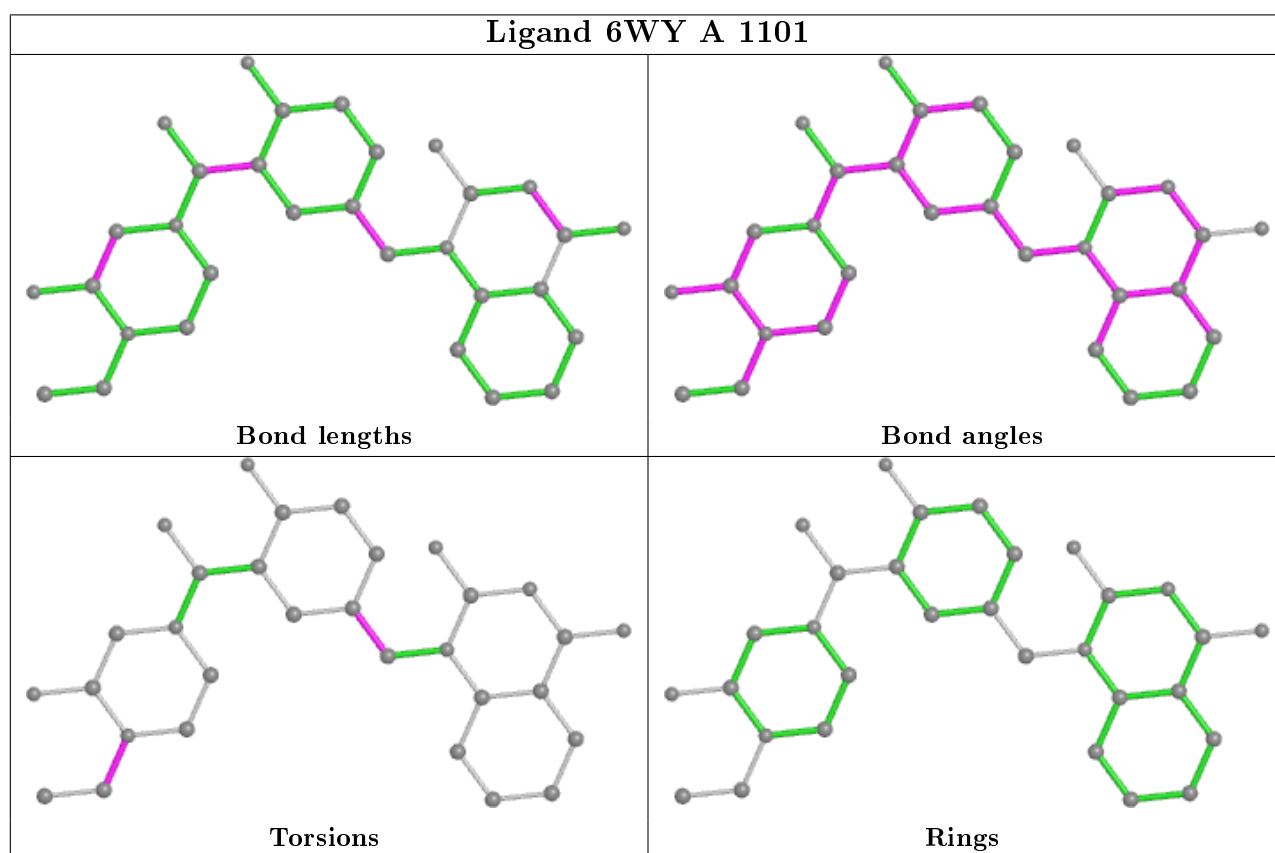
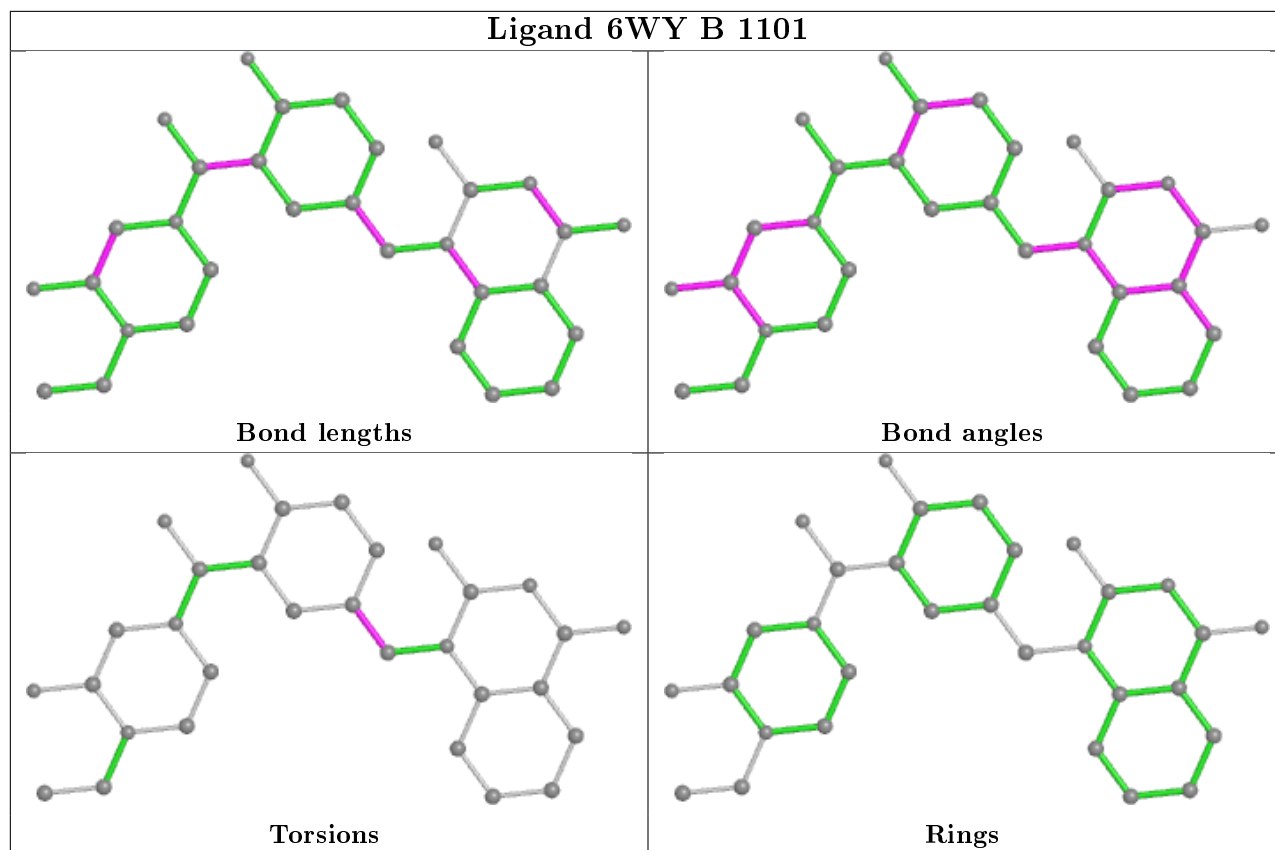
All (6) torsion outliers are listed below:

Mol	Chain	Res	Type	Atoms
2	A	1101	6WY	CAA-CAN-NBC-CAO
2	A	1101	6WY	CAA-CAN-NBC-C
2	A	1101	6WY	NBE-CAR-CAV-CAI
2	A	1101	6WY	NBE-CAR-CAV-CAM
2	B	1101	6WY	NBE-CAR-CAV-CAI
2	B	1101	6WY	NBE-CAR-CAV-CAM

There are no ring outliers.

No monomer is involved in short contacts.

The following is a two-dimensional graphical depiction of Mogul quality analysis of bond lengths, bond angles, torsion angles, and ring geometry for all instances of the Ligand of Interest. In addition, ligands with molecular weight > 250 and outliers as shown on the validation Tables will also be included. For torsion angles, if less than 5% of the Mogul distribution of torsion angles is within 10 degrees of the torsion angle in question, then that torsion angle is considered an outlier. Any bond that is central to one or more torsion angles identified as an outlier by Mogul will be highlighted in the graph. For rings, the root-mean-square deviation (RMSD) between the ring in question and similar rings identified by Mogul is calculated over all ring torsion angles. If the average RMSD is greater than 60 degrees and the minimal RMSD between the ring in question and any Mogul-identified rings is also greater than 60 degrees, then that ring is considered an outlier. The outliers are highlighted in purple. The color gray indicates Mogul did not find sufficient equivalents in the CSD to analyse the geometry.



5.7 Other polymers [i](#)

There are no such residues in this entry.

5.8 Polymer linkage issues [i](#)

There are no chain breaks in this entry.

6 Fit of model and data

6.1 Protein, DNA and RNA chains

In the following table, the column labelled ‘#RSRZ> 2’ contains the number (and percentage) of RSRZ outliers, followed by percent RSRZ outliers for the chain as percentile scores relative to all X-ray entries and entries of similar resolution. The OWAB column contains the minimum, median, 95th percentile and maximum values of the occupancy-weighted average B-factor per residue. The column labelled ‘Q< 0.9’ lists the number of (and percentage) of residues with an average occupancy less than 0.9.

Mol	Chain	Analysed	<RSRZ>	#RSRZ>2	OWAB(Å ²)	Q<0.9
1	A	351/352 (99%)	0.05	10 (2%) 53 49	18, 32, 55, 99	0
1	B	350/352 (99%)	0.62	38 (10%) 5 4	26, 43, 83, 189	0
All	All	701/704 (99%)	0.33	48 (6%) 17 14	18, 38, 74, 189	0

All (48) RSRZ outliers are listed below:

Mol	Chain	Res	Type	RSRZ
1	B	747	LYS	16.9
1	B	746	MET	15.3
1	B	726	ASP	10.5
1	B	749	PRO	8.0
1	B	723	GLY	7.4
1	B	744	PHE	6.9
1	B	745	GLY	6.7
1	B	1011	THR	6.1
1	A	661	MET	5.6
1	B	720	VAL	5.0
1	B	827	ASN	4.8
1	B	661	MET	4.6
1	A	913	GLY	4.5
1	A	939	SER	3.9
1	B	721	SER	3.9
1	B	722	GLN	3.7
1	B	727	SER	3.6
1	B	705	GLN	3.6
1	A	747	LYS	3.5
1	B	750	PRO	3.4
1	B	975	ILE	3.4
1	A	660	HIS	3.3
1	B	784	ASP	3.3
1	B	725	SER	3.2

Continued on next page...

Continued from previous page...

Mol	Chain	Res	Type	RSRZ
1	B	660	HIS	3.1
1	B	830	ASP	2.8
1	B	743	ASP	2.7
1	B	756	ASP	2.6
1	B	853	GLN	2.6
1	B	751	LEU	2.6
1	A	785	SER	2.5
1	B	981	ASP	2.5
1	A	1006	LYS	2.4
1	B	1008[A]	ASN	2.4
1	A	846	GLN	2.3
1	B	783	ASP	2.3
1	B	855	HIS	2.3
1	B	825	THR	2.2
1	A	807	ASP	2.2
1	B	852	LYS	2.2
1	B	1009	PHE	2.1
1	B	912	GLN	2.1
1	B	962	ILE	2.1
1	B	829	TYR	2.1
1	B	959	SER	2.1
1	A	1011	THR	2.1
1	B	956	PRO	2.0
1	B	785	SER	2.0

6.2 Non-standard residues in protein, DNA, RNA chains [i](#)

There are no non-standard protein/DNA/RNA residues in this entry.

6.3 Carbohydrates [i](#)

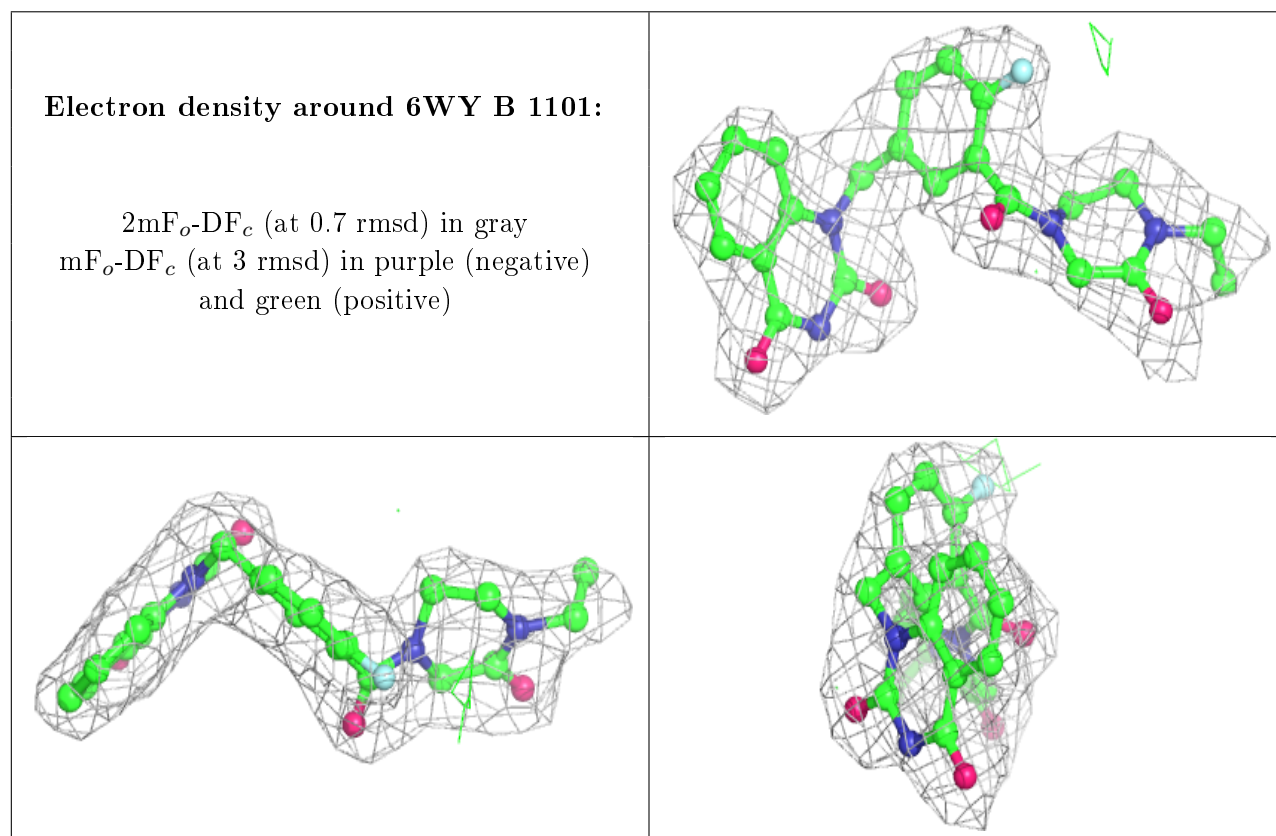
There are no monosaccharides in this entry.

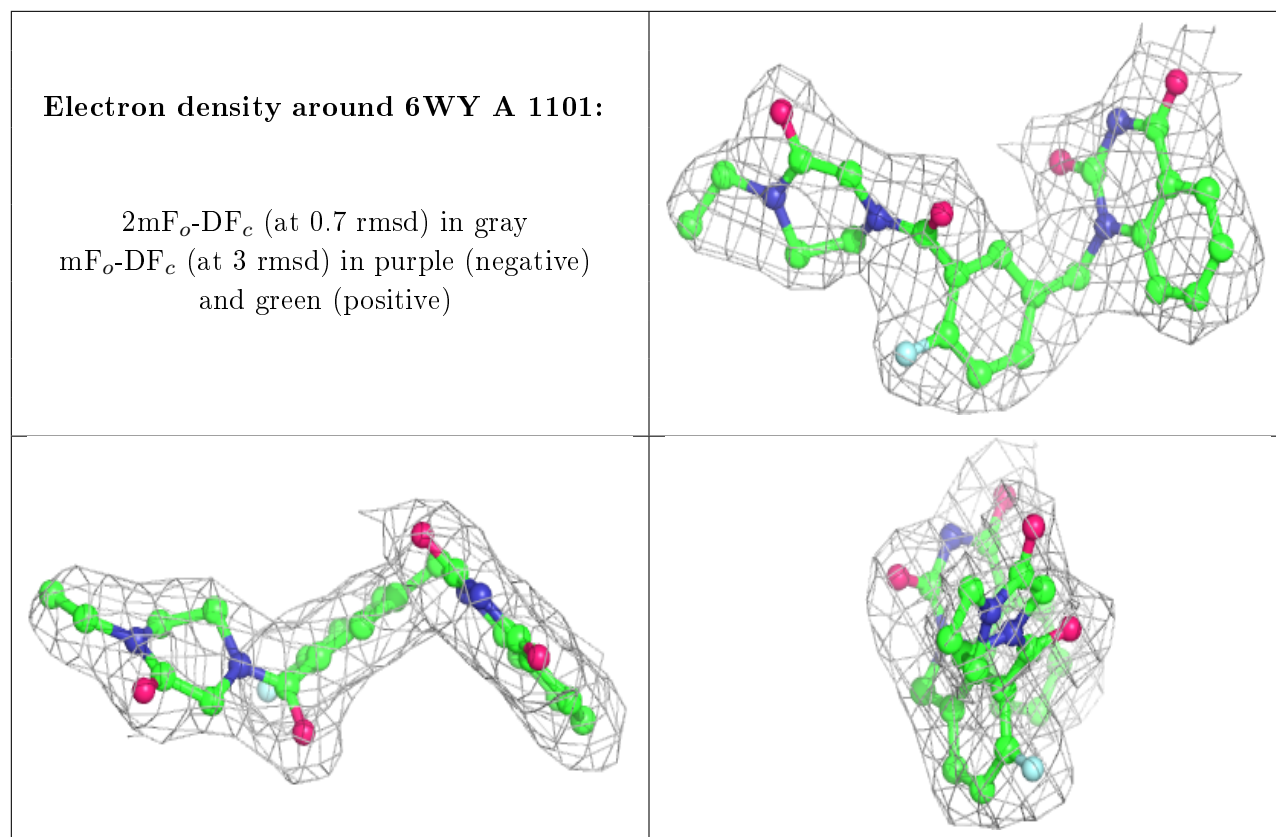
6.4 Ligands [i](#)

In the following table, the Atoms column lists the number of modelled atoms in the group and the number defined in the chemical component dictionary. The B-factors column lists the minimum, median, 95th percentile and maximum values of B factors of atoms in the group. The column labelled 'Q< 0.9' lists the number of atoms with occupancy less than 0.9.

Mol	Type	Chain	Res	Atoms	RSCC	RSR	B-factors(\AA^2)	Q<0.9
2	6WY	B	1101	31/31	0.96	0.16	30,31,33,34	0
2	6WY	A	1101	31/31	0.96	0.14	21,23,27,27	0

The following is a graphical depiction of the model fit to experimental electron density of all instances of the Ligand of Interest. In addition, ligands with molecular weight > 250 and outliers as shown on the geometry validation Tables will also be included. Each fit is shown from different orientation to approximate a three-dimensional view.





6.5 Other polymers [i](#)

There are no such residues in this entry.