



# Full wwPDB X-ray Structure Validation Report ⓘ

May 17, 2020 – 03:28 am BST

PDB ID : 4KQI  
Title : Crystal structure of CobT E317A complexed with its reaction products  
Authors : Chan, C.H.; Newmister, S.A.; Taylor, K.C.; Claas, K.R.; Rayment, I.; Escalante-Semerena, J.C.  
Deposited on : 2013-05-15  
Resolution : 1.40 Å(reported)

This is a Full wwPDB X-ray Structure Validation Report for a publicly released PDB entry.

We welcome your comments at [validation@mail.wwpdb.org](mailto:validation@mail.wwpdb.org)

A user guide is available at

<https://www.wwpdb.org/validation/2017/XrayValidationReportHelp>

with specific help available everywhere you see the ⓘ symbol.

---

The following versions of software and data (see [references ⓘ](#)) were used in the production of this report:

MolProbity : 4.02b-467  
Mogul : 1.8.5 (274361), CSD as541be (2020)  
Xtriage (Phenix) : 1.13  
EDS : 2.11  
buster-report : 1.1.7 (2018)  
Percentile statistics : 20191225.v01 (using entries in the PDB archive December 25th 2019)  
Refmac : 5.8.0158  
CCP4 : 7.0.044 (Gargrove)  
Ideal geometry (proteins) : Engh & Huber (2001)  
Ideal geometry (DNA, RNA) : Parkinson et al. (1996)  
Validation Pipeline (wwPDB-VP) : 2.11

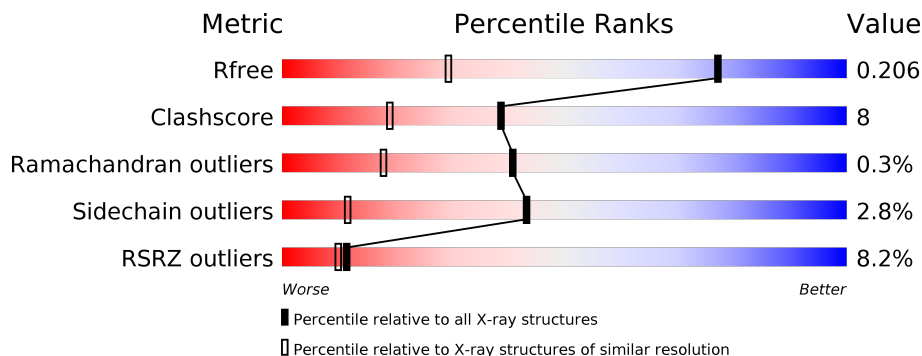
# 1 Overall quality at a glance

The following experimental techniques were used to determine the structure:

*X-RAY DIFFRACTION*

The reported resolution of this entry is 1.40 Å.

Percentile scores (ranging between 0-100) for global validation metrics of the entry are shown in the following graphic. The table shows the number of entries on which the scores are based.



Metric	Whole archive (#Entries)	Similar resolution (#Entries, resolution range(Å))
$R_{free}$	130704	1714 (1.40-1.40)
Clashscore	141614	1812 (1.40-1.40)
Ramachandran outliers	138981	1763 (1.40-1.40)
Sidechain outliers	138945	1762 (1.40-1.40)
RSRZ outliers	127900	1674 (1.40-1.40)

The table below summarises the geometric issues observed across the polymeric chains and their fit to the electron density. The red, orange, yellow and green segments on the lower bar indicate the fraction of residues that contain outliers for  $\geq 3$ , 2, 1 and 0 types of geometric quality criteria respectively. A grey segment represents the fraction of residues that are not modelled. The numeric value for each fraction is indicated below the corresponding segment, with a dot representing fractions  $\leq 5\%$ . The upper red bar (where present) indicates the fraction of residues that have poor fit to the electron density. The numeric value is given above the bar.

Mol	Chain	Length	Quality of chain
1	A	356	

The following table lists non-polymeric compounds, carbohydrate monomers and non-standard residues in protein, DNA, RNA chains that are outliers for geometric or electron-density-fit criteria:

Mol	Type	Chain	Res	Chirality	Geometry	Clashes	Electron density
3	EDO	A	402	-	-	X	-

## 2 Entry composition [i](#)

There are 5 unique types of molecules in this entry. The entry contains 2719 atoms, of which 0 are hydrogens and 0 are deuteriums.

In the tables below, the ZeroOcc column contains the number of atoms modelled with zero occupancy, the AltConf column contains the number of residues with at least one atom in alternate conformation and the Trace column contains the number of residues modelled with at most 2 atoms.

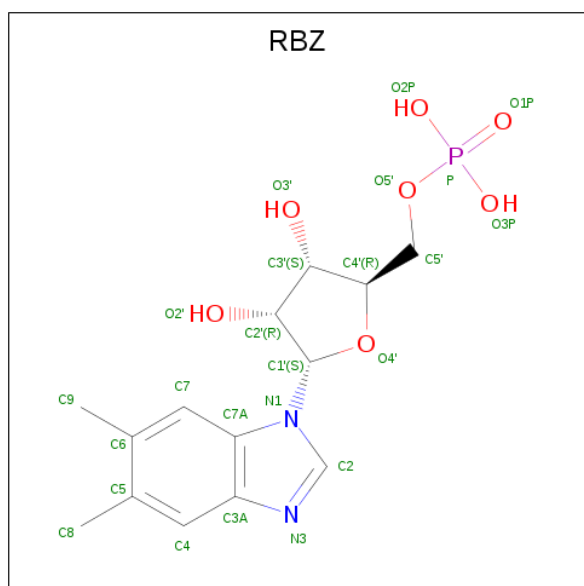
- Molecule 1 is a protein called Nicotinate-nucleotide--dimethylbenzimidazole phosphoribosyl transferase.

Mol	Chain	Residues	Atoms					ZeroOcc	AltConf	Trace
			Total	C	N	O	S			
1	A	340	2451	1546	433	447	25	0	6	0

There is a discrepancy between the modelled and reference sequences:

Chain	Residue	Modelled	Actual	Comment	Reference
A	317	ALA	GLU	ENGINEERED MUTATION	UNP Q05603

- Molecule 2 is ALPHA-RIBAZOLE-5'-PHOSPHATE (three-letter code: RBZ) (formula:  $C_{14}H_{19}N_2O_7P$ ).



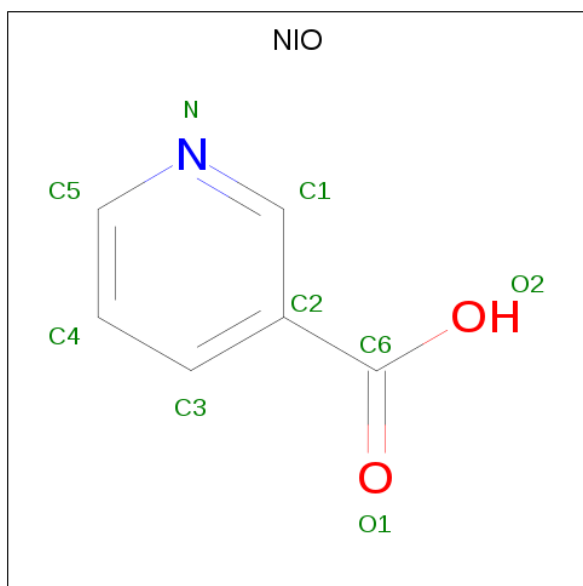
Mol	Chain	Residues	Atoms					ZeroOcc	AltConf
			Total	C	N	O	P		
2	A	1	24	14	2	7	1	0	0

- Molecule 3 is 1,2-ETHANEDIOL (three-letter code: EDO) (formula:  $C_2H_6O_2$ ).



Mol	Chain	Residues	Atoms			ZeroOcc	AltConf
3	A	1	Total	C	O	0	0
			4	2	2		

- Molecule 4 is NICOTINIC ACID (three-letter code: NIO) (formula:  $C_6H_5NO_2$ ).



Mol	Chain	Residues	Atoms				ZeroOcc	AltConf
4	A	1	Total	C	N	O	0	0
			9	6	1	2		

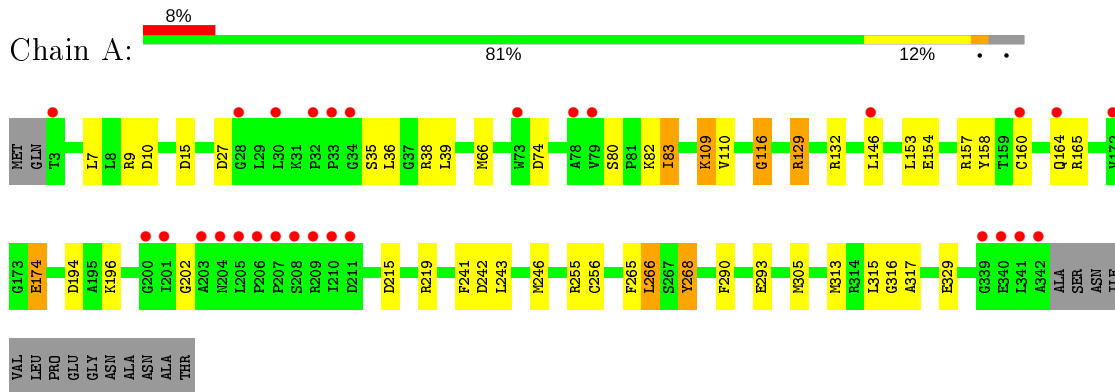
- Molecule 5 is water.

<b>Mol</b>	<b>Chain</b>	<b>Residues</b>	<b>Atoms</b>		<b>ZeroOcc</b>	<b>AltConf</b>
5	A	231	Total 231	O 231	0	0

### 3 Residue-property plots [i](#)

These plots are drawn for all protein, RNA and DNA chains in the entry. The first graphic for a chain summarises the proportions of the various outlier classes displayed in the second graphic. The second graphic shows the sequence view annotated by issues in geometry and electron density. Residues are color-coded according to the number of geometric quality criteria for which they contain at least one outlier: green = 0, yellow = 1, orange = 2 and red = 3 or more. A red dot above a residue indicates a poor fit to the electron density ( $RSRZ > 2$ ). Stretches of 2 or more consecutive residues without any outlier are shown as a green connector. Residues present in the sample, but not in the model, are shown in grey.

- Molecule 1: Nicotinate-nucleotide--dimethylbenzimidazole phosphoribosyltransferase



## 4 Data and refinement statistics

Property	Value	Source
Space group	P 2 21 21	Depositor
Cell constants a, b, c, $\alpha$ , $\beta$ , $\gamma$	46.75Å 71.28Å 89.44Å 90.00° 90.00° 90.00°	Depositor
Resolution (Å)	35.85 – 1.40 35.82 – 1.40	Depositor EDS
% Data completeness (in resolution range)	99.8 (35.85-1.40) 99.8 (35.82-1.40)	Depositor EDS
$R_{merge}$	0.05	Depositor
$R_{sym}$	(Not available)	Depositor
$\langle I/\sigma(I) \rangle$ <sup>1</sup>	8.96 (at 1.40Å)	Xtrriage
Refinement program	REFMAC 5.7.0029	Depositor
R, $R_{free}$	0.173 , 0.195 0.182 , 0.206	Depositor DCC
$R_{free}$ test set	2999 reflections (5.05%)	wwPDB-VP
Wilson B-factor (Å <sup>2</sup> )	14.6	Xtrriage
Anisotropy	0.065	Xtrriage
Bulk solvent $k_{sol}$ (e/Å <sup>3</sup> ), $B_{sol}$ (Å <sup>2</sup> )	0.38 , 48.0	EDS
L-test for twinning <sup>2</sup>	$\langle  L  \rangle = 0.50$ , $\langle L^2 \rangle = 0.34$	Xtrriage
Estimated twinning fraction	No twinning to report.	Xtrriage
$F_o, F_c$ correlation	0.96	EDS
Total number of atoms	2719	wwPDB-VP
Average B, all atoms (Å <sup>2</sup> )	18.0	wwPDB-VP

Xtrriage's analysis on translational NCS is as follows: *The largest off-origin peak in the Patterson function is 6.74% of the height of the origin peak. No significant pseudotranslation is detected.*

<sup>1</sup>Intensities estimated from amplitudes.

<sup>2</sup>Theoretical values of  $\langle |L| \rangle$ ,  $\langle L^2 \rangle$  for acentric reflections are 0.5, 0.333 respectively for untwinned datasets, and 0.375, 0.2 for perfectly twinned datasets.

## 5 Model quality i

### 5.1 Standard geometry i

Bond lengths and bond angles in the following residue types are not validated in this section: NIO, EDO, RBZ

The Z score for a bond length (or angle) is the number of standard deviations the observed value is removed from the expected value. A bond length (or angle) with  $|Z| > 5$  is considered an outlier worth inspection. RMSZ is the root-mean-square of all Z scores of the bond lengths (or angles).

Mol	Chain	Bond lengths		Bond angles	
		RMSZ	# Z  >5	RMSZ	# Z  >5
1	A	0.91	1/2509 (0.0%)	1.54	35/3413 (1.0%)

All (1) bond length outliers are listed below:

Mol	Chain	Res	Type	Atoms	Z	Observed(Å)	Ideal(Å)
1	A	317	ALA	N-CA	-6.33	1.33	1.46

All (35) bond angle outliers are listed below:

Mol	Chain	Res	Type	Atoms	Z	Observed(°)	Ideal(°)
1	A	66	MET	CG-SD-CE	-20.68	67.10	100.20
1	A	132	ARG	NE-CZ-NH2	-18.87	110.87	120.30
1	A	129	ARG	NE-CZ-NH2	-17.94	111.33	120.30
1	A	38	ARG	NE-CZ-NH1	-14.20	113.20	120.30
1	A	132	ARG	NE-CZ-NH1	12.18	126.39	120.30
1	A	129	ARG	NE-CZ-NH1	11.07	125.84	120.30
1	A	109	LYS	CD-CE-NZ	11.03	137.07	111.70
1	A	255	ARG	NE-CZ-NH1	10.35	125.48	120.30
1	A	255	ARG	NE-CZ-NH2	-8.60	116.00	120.30
1	A	305	MET	CG-SD-CE	-7.68	87.90	100.20
1	A	66	MET	CB-CG-SD	-7.27	90.59	112.40
1	A	242	ASP	CB-CG-OD1	-7.15	111.86	118.30
1	A	158	TYR	CB-CG-CD2	6.55	124.93	121.00
1	A	268	TYR	CB-CG-CD2	6.37	124.82	121.00
1	A	15	ASP	CB-CG-OD1	-6.34	112.60	118.30
1	A	329	GLU	OE1-CD-OE2	6.22	130.76	123.30
1	A	241	PHE	CB-CG-CD1	-5.97	116.62	120.80
1	A	243	LEU	CB-CG-CD2	-5.84	101.08	111.00
1	A	165	ARG	O-C-N	-5.74	113.44	123.20
1	A	219	ARG	NE-CZ-NH2	-5.71	117.44	120.30

*Continued on next page...*



Continued from previous page...

Mol	Chain	Res	Type	Atoms	Z	Observed(°)	Ideal(°)
1	A	9	ARG	NE-CZ-NH2	5.71	123.16	120.30
1	A	215	ASP	CB-CG-OD2	-5.71	113.16	118.30
1	A	219	ARG	NE-CZ-NH1	5.65	123.12	120.30
1	A	10	ASP	CB-CG-OD1	-5.64	113.22	118.30
1	A	246	MET	CG-SD-CE	-5.62	91.20	100.20
1	A	194	ASP	CB-CG-OD2	5.59	123.34	118.30
1	A	109	LYS	CA-CB-CG	5.58	125.66	113.40
1	A	165	ARG	N-CA-C	5.52	125.91	111.00
1	A	7	LEU	CB-CG-CD2	-5.47	101.70	111.00
1	A	83	ILE	CG1-CB-CG2	5.46	123.41	111.40
1	A	39	LEU	CB-CG-CD1	-5.42	101.78	111.00
1	A	83	ILE	CB-CA-C	-5.42	100.76	111.60
1	A	242	ASP	CB-CG-OD2	5.16	122.95	118.30
1	A	266	LEU	CB-CG-CD2	5.10	119.67	111.00
1	A	74	ASP	CB-CG-OD2	-5.03	113.78	118.30

There are no chirality outliers.

There are no planarity outliers.

## 5.2 Too-close contacts [\(i\)](#)

In the following table, the Non-H and H(model) columns list the number of non-hydrogen atoms and hydrogen atoms in the chain respectively. The H(added) column lists the number of hydrogen atoms added and optimized by MolProbity. The Clashes column lists the number of clashes within the asymmetric unit, whereas Symm-Clashes lists symmetry related clashes.

Mol	Chain	Non-H	H(model)	H(added)	Clashes	Symm-Clashes
1	A	2451	0	2530	34	2
2	A	24	0	17	0	0
3	A	4	0	6	6	0
4	A	9	0	4	2	0
5	A	231	0	0	26	3
All	All	2719	0	2557	38	3

The all-atom clashscore is defined as the number of clashes found per 1000 atoms (including hydrogen atoms). The all-atom clashscore for this structure is 8.

All (38) close contacts within the same asymmetric unit are listed below, sorted by their clash magnitude.

Atom-1	Atom-2	Interatomic distance (Å)	Clash overlap (Å)
1:A:316:GLY:HA3	5:A:649:HOH:O	1.20	1.28
3:A:402:EDO:H12	5:A:713:HOH:O	1.41	1.21
1:A:313[B]:MET:SD	5:A:636:HOH:O	2.03	1.16
3:A:402:EDO:C1	5:A:713:HOH:O	1.94	1.13
1:A:315:LEU:HD13	5:A:678:HOH:O	1.50	1.09
1:A:36:LEU:HG	5:A:682:HOH:O	1.55	1.07
1:A:313[B]:MET:CG	5:A:636:HOH:O	2.04	1.04
1:A:82:LYS:NZ	5:A:700:HOH:O	1.90	1.01
1:A:36:LEU:CD2	5:A:682:HOH:O	2.11	0.98
1:A:36:LEU:CG	5:A:682:HOH:O	2.11	0.93
1:A:36:LEU:HD23	5:A:682:HOH:O	1.70	0.92
1:A:313[B]:MET:HG2	5:A:636:HOH:O	1.71	0.86
1:A:146:LEU:CD1	5:A:563:HOH:O	2.25	0.85
1:A:316:GLY:CA	5:A:649:HOH:O	1.93	0.83
1:A:27:ASP:OD1	5:A:577:HOH:O	1.96	0.83
1:A:153[A]:LEU:HD21	1:A:157:ARG:CZ	2.09	0.82
1:A:110:VAL:H	3:A:402:EDO:H22	1.48	0.79
1:A:146:LEU:HD13	5:A:563:HOH:O	1.82	0.77
1:A:293:GLU:HG3	5:A:527:HOH:O	1.89	0.73
1:A:174:GLU:OE2	5:A:634:HOH:O	2.13	0.67
3:A:402:EDO:H11	5:A:713:HOH:O	1.74	0.66
1:A:116:GLY:HA2	1:A:129:ARG:HG3	1.82	0.62
1:A:146:LEU:HD12	5:A:563:HOH:O	1.92	0.62
1:A:153[A]:LEU:HD21	1:A:157:ARG:NH1	2.15	0.61
1:A:83:ILE:HG13	5:A:531:HOH:O	2.05	0.57
4:A:403:NIO:H1	5:A:649:HOH:O	2.05	0.57
1:A:293:GLU:CG	5:A:527:HOH:O	2.52	0.55
1:A:110:VAL:N	3:A:402:EDO:H22	2.19	0.54
1:A:36:LEU:HA	5:A:682:HOH:O	2.08	0.53
1:A:196:LYS:HD3	1:A:196:LYS:O	2.10	0.52
1:A:153[A]:LEU:HD21	1:A:157:ARG:NE	2.24	0.51
1:A:110:VAL:H	3:A:402:EDO:C2	2.20	0.50
1:A:36:LEU:CA	5:A:682:HOH:O	2.60	0.48
1:A:109:LYS:HE3	5:A:662:HOH:O	2.15	0.46
1:A:153[A]:LEU:HD11	1:A:157:ARG:NH2	2.35	0.42
1:A:265:PHE:HA	1:A:268:TYR:CD1	2.56	0.40
1:A:202:GLY:HA2	4:A:403:NIO:H4	2.03	0.40

All (3) symmetry-related close contacts are listed below. The label for Atom-2 includes the symmetry operator and encoded unit-cell translations to be applied.

Atom-1	Atom-2	Interatomic distance (Å)	Clash overlap (Å)
5:A:658:HOH:O	5:A:658:HOH:O[2_565]	1.05	1.15
1:A:35:SER:OG	5:A:678:HOH:O[2_565]	1.95	0.25
1:A:154:GLU:OE2	5:A:665:HOH:O[3_845]	2.08	0.12

### 5.3 Torsion angles [i](#)

#### 5.3.1 Protein backbone [i](#)

In the following table, the Percentiles column shows the percent Ramachandran outliers of the chain as a percentile score with respect to all X-ray entries followed by that with respect to entries of similar resolution.

The Analysed column shows the number of residues for which the backbone conformation was analysed, and the total number of residues.

Mol	Chain	Analysed	Favoured	Allowed	Outliers	Percentiles
1	A	344/356 (97%)	338 (98%)	5 (2%)	1 (0%)	41 18

All (1) Ramachandran outliers are listed below:

Mol	Chain	Res	Type
1	A	116	GLY

#### 5.3.2 Protein sidechains [i](#)

In the following table, the Percentiles column shows the percent sidechain outliers of the chain as a percentile score with respect to all X-ray entries followed by that with respect to entries of similar resolution.

The Analysed column shows the number of residues for which the sidechain conformation was analysed, and the total number of residues.

Mol	Chain	Analysed	Rotameric	Outliers	Percentiles
1	A	253/261 (97%)	245 (97%)	8 (3%)	39 9

All (8) residues with a non-rotameric sidechain are listed below:

Mol	Chain	Res	Type
1	A	80	SER
1	A	160[A]	CYS
1	A	160[B]	CYS

*Continued on next page...*

*Continued from previous page...*

Mol	Chain	Res	Type
1	A	164	GLN
1	A	174	GLU
1	A	256	CYS
1	A	266	LEU
1	A	290	PHE

Some sidechains can be flipped to improve hydrogen bonding and reduce clashes. All (3) such sidechains are listed below:

Mol	Chain	Res	Type
1	A	23	GLN
1	A	164	GLN
1	A	337	ASN

### 5.3.3 RNA [i](#)

There are no RNA molecules in this entry.

## 5.4 Non-standard residues in protein, DNA, RNA chains [i](#)

There are no non-standard protein/DNA/RNA residues in this entry.

## 5.5 Carbohydrates [i](#)

There are no carbohydrates in this entry.

## 5.6 Ligand geometry [i](#)

3 ligands are modelled in this entry.

In the following table, the Counts columns list the number of bonds (or angles) for which Mogul statistics could be retrieved, the number of bonds (or angles) that are observed in the model and the number of bonds (or angles) that are defined in the Chemical Component Dictionary. The Link column lists molecule types, if any, to which the group is linked. The Z score for a bond length (or angle) is the number of standard deviations the observed value is removed from the expected value. A bond length (or angle) with  $|Z| > 2$  is considered an outlier worth inspection. RMSZ is the root-mean-square of all Z scores of the bond lengths (or angles).

Mol	Type	Chain	Res	Link	Bond lengths			Bond angles		
					Counts	RMSZ	$\# Z  > 2$	Counts	RMSZ	$\# Z  > 2$
4	NIO	A	403	-	7,9,9	0.83	0	8,11,11	1.99	3 (37%)

Mol	Type	Chain	Res	Link	Bond lengths			Bond angles		
					Counts	RMSZ	# Z  > 2	Counts	RMSZ	# Z  > 2
2	RBZ	A	401	-	23,26,26	1.46	2 (8%)	31,40,40	1.91	9 (29%)
3	EDO	A	402	-	3,3,3	0.50	0	2,2,2	1.30	0

In the following table, the Chirals column lists the number of chiral outliers, the number of chiral centers analysed, the number of these observed in the model and the number defined in the Chemical Component Dictionary. Similar counts are reported in the Torsion and Rings columns. '-' means no outliers of that kind were identified.

Mol	Type	Chain	Res	Link	Chirals	Torsions	Rings
4	NIO	A	403	-	-	0/0/4/4	0/1/1/1
2	RBZ	A	401	-	-	0/6/26/26	0/3/3/3
3	EDO	A	402	-	-	1/1/1/1	-

All (2) bond length outliers are listed below:

Mol	Chain	Res	Type	Atoms	Z	Observed(Å)	Ideal(Å)
2	A	401	RBZ	C7A-C3A	4.28	1.49	1.40
2	A	401	RBZ	C6-C5	3.62	1.49	1.40

All (12) bond angle outliers are listed below:

Mol	Chain	Res	Type	Atoms	Z	Observed(°)	Ideal(°)
2	A	401	RBZ	O2'-C2'-C3'	4.72	127.09	111.82
2	A	401	RBZ	C7-C7A-C3A	-4.53	116.06	120.54
4	A	403	NIO	C1-C2-C6	-3.96	116.06	121.31
2	A	401	RBZ	O2P-P-O5'	-2.85	99.15	106.73
2	A	401	RBZ	O4'-C1'-C2'	-2.76	102.90	106.93
2	A	401	RBZ	C4-C5-C6	-2.54	115.64	119.91
2	A	401	RBZ	C9-C6-C7	-2.43	114.53	120.34
4	A	403	NIO	C3-C2-C1	2.35	122.57	116.76
4	A	403	NIO	C4-C3-C2	-2.32	117.65	120.56
2	A	401	RBZ	O3'-C3'-C4'	-2.28	104.47	111.05
2	A	401	RBZ	O3'-C3'-C2'	2.27	119.15	111.82
2	A	401	RBZ	O5'-C5'-C4'	2.18	116.48	108.99

There are no chirality outliers.

All (1) torsion outliers are listed below:

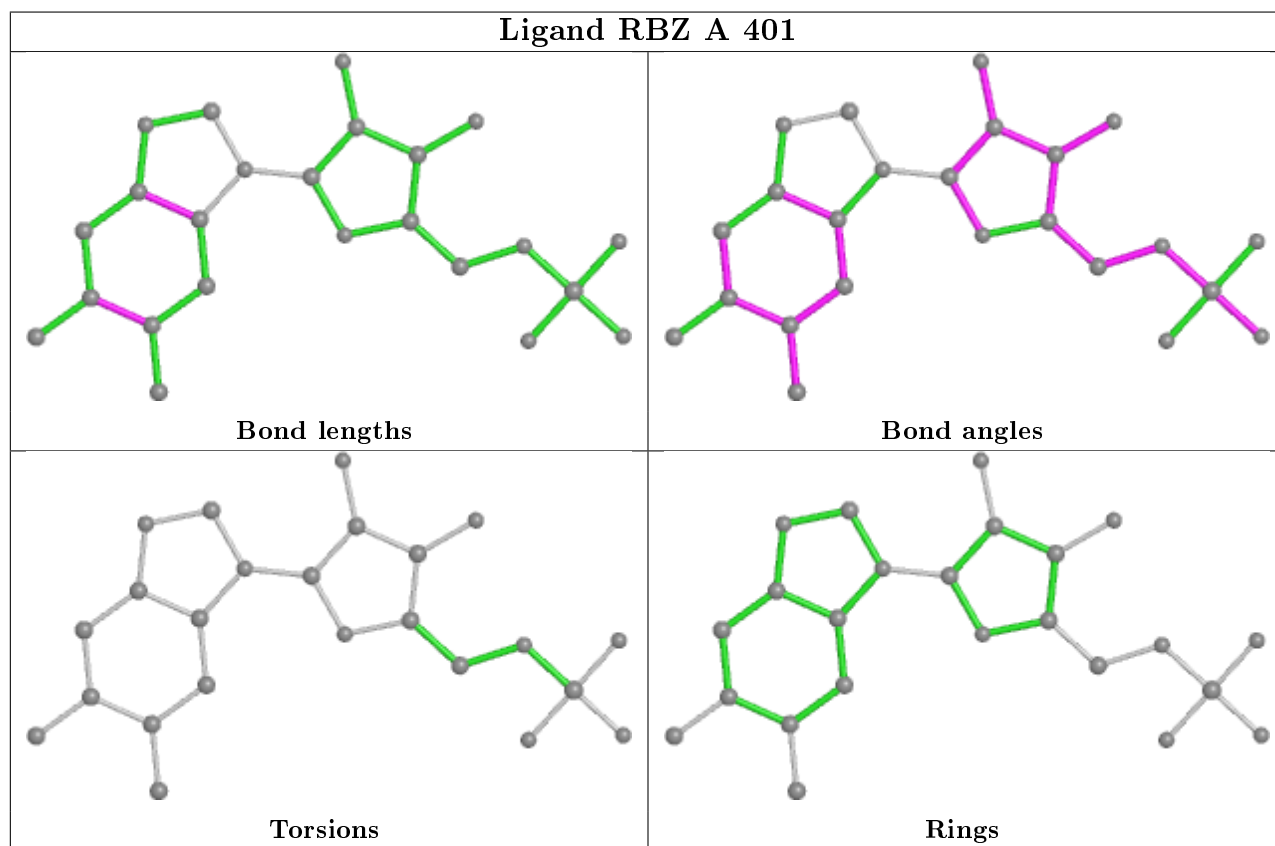
Mol	Chain	Res	Type	Atoms
3	A	402	EDO	O1-C1-C2-O2

There are no ring outliers.

2 monomers are involved in 8 short contacts:

Mol	Chain	Res	Type	Clashes	Symm-Clashes
4	A	403	NIO	2	0
3	A	402	EDO	6	0

The following is a two-dimensional graphical depiction of Mogul quality analysis of bond lengths, bond angles, torsion angles, and ring geometry for all instances of the Ligand of Interest. In addition, ligands with molecular weight > 250 and outliers as shown on the validation Tables will also be included. For torsion angles, if less than 5% of the Mogul distribution of torsion angles is within 10 degrees of the torsion angle in question, then that torsion angle is considered an outlier. Any bond that is central to one or more torsion angles identified as an outlier by Mogul will be highlighted in the graph. For rings, the root-mean-square deviation (RMSD) between the ring in question and similar rings identified by Mogul is calculated over all ring torsion angles. If the average RMSD is greater than 60 degrees and the minimal RMSD between the ring in question and any Mogul-identified rings is also greater than 60 degrees, then that ring is considered an outlier. The outliers are highlighted in purple. The color gray indicates Mogul did not find sufficient equivalents in the CSD to analyse the geometry.



## 5.7 Other polymers [\(i\)](#)

There are no such residues in this entry.

## 5.8 Polymer linkage issues

There are no chain breaks in this entry.

## 6 Fit of model and data [i](#)

### 6.1 Protein, DNA and RNA chains [i](#)

In the following table, the column labelled ‘#RSRZ> 2’ contains the number (and percentage) of RSRZ outliers, followed by percent RSRZ outliers for the chain as percentile scores relative to all X-ray entries and entries of similar resolution. The OWAB column contains the minimum, median, 95<sup>th</sup> percentile and maximum values of the occupancy-weighted average B-factor per residue. The column labelled ‘Q< 0.9’ lists the number of (and percentage) of residues with an average occupancy less than 0.9.

Mol	Chain	Analysed	<RSRZ>	#RSRZ>2	OWAB(Å <sup>2</sup> )	Q<0.9
1	A	340/356 (95%)	0.37	28 (8%) <b>11</b> <b>10</b>	8, 15, 32, 43	0

All (28) RSRZ outliers are listed below:

Mol	Chain	Res	Type	RSRZ
1	A	341	LEU	7.8
1	A	205	LEU	7.0
1	A	201	ILE	5.6
1	A	207	PRO	4.9
1	A	160[A]	CYS	4.9
1	A	203	ALA	4.2
1	A	206	PRO	4.2
1	A	33	PRO	4.0
1	A	342	ALA	3.8
1	A	79	VAL	3.7
1	A	73	TRP	3.6
1	A	204	ASN	3.4
1	A	210	ILE	3.3
1	A	200	GLY	3.3
1	A	339	GLY	3.2
1	A	30	LEU	3.1
1	A	164	GLN	3.0
1	A	34	GLY	3.0
1	A	3	THR	2.9
1	A	146	LEU	2.9
1	A	211	ASP	2.8
1	A	78	ALA	2.8
1	A	32	PRO	2.7
1	A	209	ARG	2.4
1	A	208	SER	2.4
1	A	340	GLU	2.2
1	A	28	GLY	2.2

*Continued on next page...*



*Continued from previous page...*

Mol	Chain	Res	Type	RSRZ
1	A	172[A]	VAL	2.1

## 6.2 Non-standard residues in protein, DNA, RNA chains [i](#)

There are no non-standard protein/DNA/RNA residues in this entry.

## 6.3 Carbohydrates [i](#)

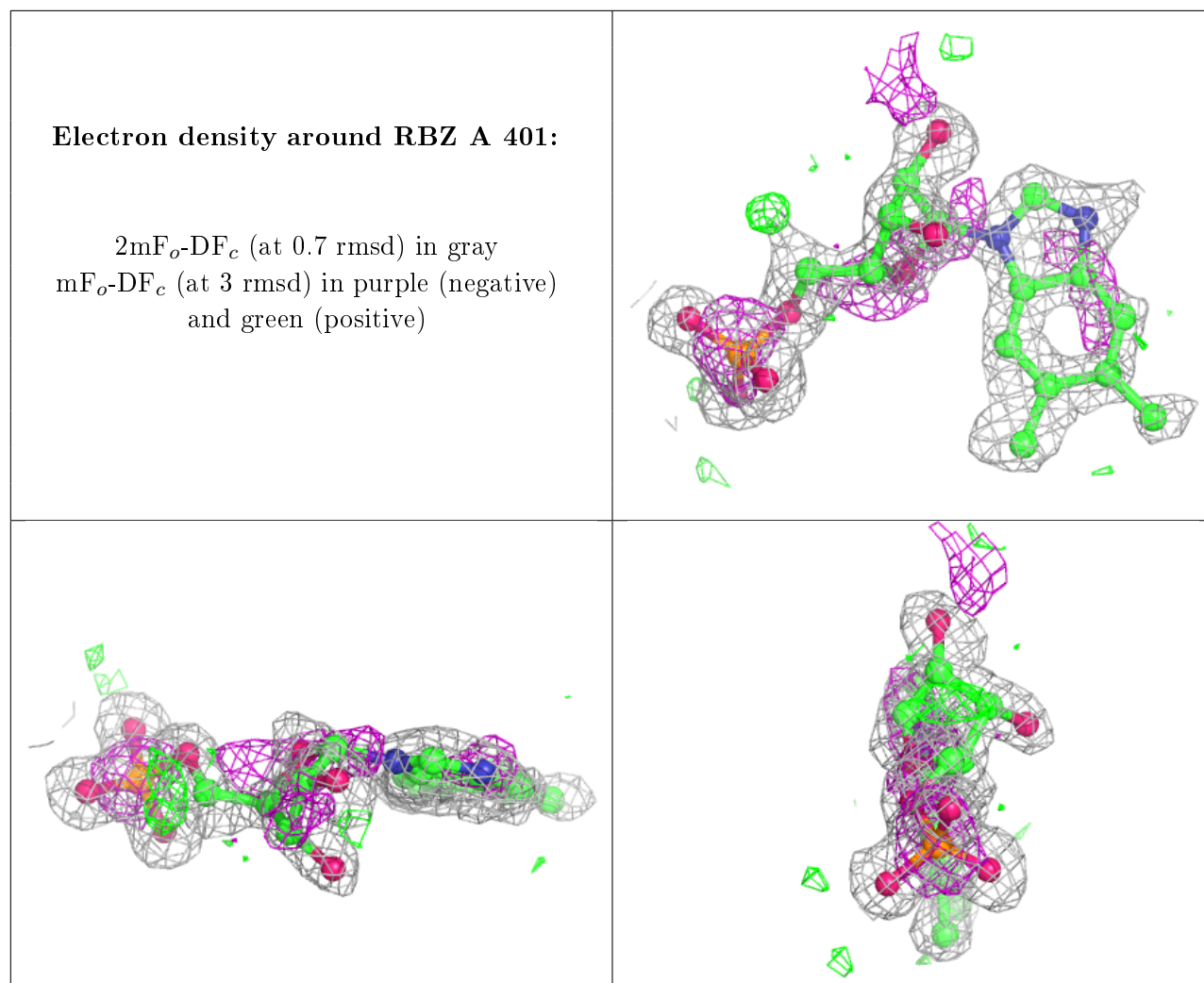
There are no carbohydrates in this entry.

## 6.4 Ligands [i](#)

In the following table, the Atoms column lists the number of modelled atoms in the group and the number defined in the chemical component dictionary. The B-factors column lists the minimum, median, 95<sup>th</sup> percentile and maximum values of B factors of atoms in the group. The column labelled 'Q< 0.9' lists the number of atoms with occupancy less than 0.9.

Mol	Type	Chain	Res	Atoms	RSCC	RSR	B-factors(Å <sup>2</sup> )	Q<0.9
3	EDO	A	402	4/4	0.82	0.22	23,28,29,32	0
4	NIO	A	403	9/9	0.90	0.20	10,25,35,39	0
2	RBZ	A	401	24/24	0.91	0.23	18,27,31,32	0

The following is a graphical depiction of the model fit to experimental electron density of all instances of the Ligand of Interest. In addition, ligands with molecular weight > 250 and outliers as shown on the geometry validation Tables will also be included. Each fit is shown from different orientation to approximate a three-dimensional view.



## 6.5 Other polymers [i](#)

There are no such residues in this entry.