



# wwPDB X-ray Structure Validation Summary Report ⓘ

Sep 10, 2023 – 09:41 AM EDT

PDB ID : 4KRO  
Title : Nanobody/VHH domain EgA1 in complex with the extracellular region of EGFR  
Authors : Ferguson, K.M.; Schmitz, K.R.  
Deposited on : 2013-05-16  
Resolution : 3.05 Å (reported)

This is a wwPDB X-ray Structure Validation Summary Report for a publicly released PDB entry.

We welcome your comments at [validation@mail.wwpdb.org](mailto:validation@mail.wwpdb.org)

A user guide is available at

<https://www.wwpdb.org/validation/2017/XrayValidationReportHelp>

with specific help available everywhere you see the ⓘ symbol.

The types of validation reports are described at

<http://www.wwpdb.org/validation/2017/FAQs#types>.

---

The following versions of software and data (see [references ⓘ](#)) were used in the production of this report:

MolProbity : 4.02b-467  
Mogul : 1.8.5 (274361), CSD as541be (2020)  
Xtriage (Phenix) : 1.13  
EDS : 2.35.1  
Percentile statistics : 20191225.v01 (using entries in the PDB archive December 25th 2019)  
Refmac : 5.8.0158  
CCP4 : 7.0.044 (Gargrove)  
Ideal geometry (proteins) : Engh & Huber (2001)  
Ideal geometry (DNA, RNA) : Parkinson et al. (1996)  
Validation Pipeline (wwPDB-VP) : 2.35.1

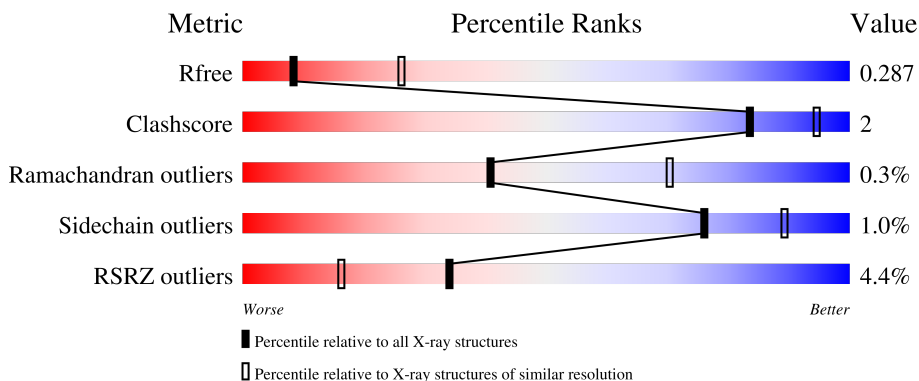
# 1 Overall quality at a glance

The following experimental techniques were used to determine the structure:

*X-RAY DIFFRACTION*

The reported resolution of this entry is 3.05 Å.

Percentile scores (ranging between 0-100) for global validation metrics of the entry are shown in the following graphic. The table shows the number of entries on which the scores are based.



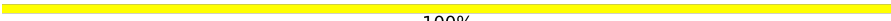
Metric	Whole archive (#Entries)	Similar resolution (#Entries, resolution range(Å))
$R_{free}$	130704	1754 (3.10-3.02)
Clashscore	141614	1864 (3.10-3.02)
Ramachandran outliers	138981	1794 (3.10-3.02)
Sidechain outliers	138945	1793 (3.10-3.02)
RSRZ outliers	127900	1713 (3.10-3.02)

The table below summarises the geometric issues observed across the polymeric chains and their fit to the electron density. The red, orange, yellow and green segments of the lower bar indicate the fraction of residues that contain outliers for  $\geq 3$ , 2, 1 and 0 types of geometric quality criteria respectively. A grey segment represents the fraction of residues that are not modelled. The numeric value for each fraction is indicated below the corresponding segment, with a dot representing fractions  $\leq 5\%$ . The upper red bar (where present) indicates the fraction of residues that have poor fit to the electron density. The numeric value is given above the bar.

Mol	Chain	Length	Quality of chain
1	A	624	 6% 87% 9%
2	B	138	 7% 76% 8% 16%
3	C	211	 95% 5%
4	D	220	 87% 9%
5	E	2	 50% 50%

*Continued on next page...*

*Continued from previous page...*

Mol	Chain	Length	Quality of chain
5	F	2	 100%

## 2 Entry composition [i](#)

There are 7 unique types of molecules in this entry. The entry contains 14907 atoms, of which 6958 are hydrogens and 0 are deuteriums.

In the tables below, the ZeroOcc column contains the number of atoms modelled with zero occupancy, the AltConf column contains the number of residues with at least one atom in alternate conformation and the Trace column contains the number of residues modelled with at most 2 atoms.

- Molecule 1 is a protein called Epidermal growth factor receptor.

Mol	Chain	Residues	Atoms					ZeroOcc	AltConf	Trace	
			Total	C	H	N	O				S
1	A	570	7064	2366	3231	683	734	50	0	0	0

There are 6 discrepancies between the modelled and reference sequences:

Chain	Residue	Modelled	Actual	Comment	Reference
A	619	HIS	-	expression tag	UNP P00533
A	620	HIS	-	expression tag	UNP P00533
A	621	HIS	-	expression tag	UNP P00533
A	622	HIS	-	expression tag	UNP P00533
A	623	HIS	-	expression tag	UNP P00533
A	624	HIS	-	expression tag	UNP P00533

- Molecule 2 is a protein called Nanobody/VHH domain EgA1.

Mol	Chain	Residues	Atoms					ZeroOcc	AltConf	Trace	
			Total	C	H	N	O				S
2	B	116	1492	533	656	140	160	3	0	0	0

- Molecule 3 is a protein called Cetuximab light chain.

Mol	Chain	Residues	Atoms					ZeroOcc	AltConf	Trace	
			Total	C	H	N	O				S
3	C	211	3064	985	1483	267	325	4	0	0	0

- Molecule 4 is a protein called Cetuximab heavy chain.

Mol	Chain	Residues	Atoms					ZeroOcc	AltConf	Trace	
			Total	C	H	N	O				S
4	D	213	3088	1009	1499	259	316	5	0	0	0

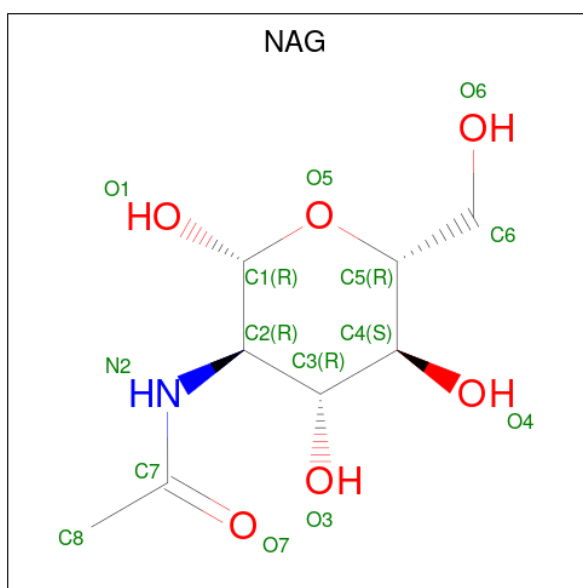
- Molecule 5 is an oligosaccharide called 2-acetamido-2-deoxy-beta-D-glucopyranose-(1-4)-2-a

cetamido-2-deoxy-beta-D-glucopyranose.



Mol	Chain	Residues	Atoms					ZeroOcc	AltConf	Trace
			Total	C	H	N	O			
5	E	2	Total	C	H	N	O	0	0	0
			53	16	25	2	10			
5	F	2	Total	C	H	N	O	0	0	0
			53	16	25	2	10			

- Molecule 6 is 2-acetamido-2-deoxy-beta-D-glucopyranose (three-letter code: NAG) (formula:  $C_8H_{15}NO_6$ ).



Mol	Chain	Residues	Atoms					ZeroOcc	AltConf
			Total	C	H	N	O		
6	A	1	Total	C	H	N	O	0	0
			27	8	13	1	5		
6	A	1	Total	C	H	N	O	0	0
			27	8	13	1	5		
6	D	1	Total	C	H	N	O	0	0
			27	8	13	1	5		

- Molecule 7 is water.

Mol	Chain	Residues	Atoms	ZeroOcc	AltConf
7	A	3	Total	O	
			3	3	0
				0	0

Continued on next page...

*Continued from previous page...*


Mol	Chain	Residues	Atoms	ZeroOcc	AltConf
7	C	3	Total O 3 3	0	0
7	D	6	Total O 6 6	0	0



Chain E:  50% 50%

MAG1  
MAG2

- Molecule 5: 2-acetamido-2-deoxy-beta-D-glucopyranose-(1-4)-2-acetamido-2-deoxy-beta-D-glucopyranose

Chain F:  100%

MAG1  
MAG2



## 4 Data and refinement statistics

Property	Value	Source
Space group	P 1 21 1	Depositor
Cell constants a, b, c, $\alpha$ , $\beta$ , $\gamma$	66.21Å 96.29Å 128.10Å 90.00° 100.68° 90.00°	Depositor
Resolution (Å)	38.19 – 3.05 38.19 – 3.05	Depositor EDS
% Data completeness (in resolution range)	98.6 (38.19-3.05) 98.6 (38.19-3.05)	Depositor EDS
$R_{merge}$	0.10	Depositor
$R_{sym}$	(Not available)	Depositor
$\langle I/\sigma(I) \rangle$ <sup>1</sup>	2.51 (at 3.06Å)	Xtrriage
Refinement program	PHENIX 1.8.2_1309	Depositor
R, $R_{free}$	0.221 , 0.280 0.227 , 0.287	Depositor DCC
$R_{free}$ test set	1507 reflections (5.06%)	wwPDB-VP
Wilson B-factor (Å <sup>2</sup> )	50.9	Xtrriage
Anisotropy	0.129	Xtrriage
Bulk solvent $k_{sol}$ (e/Å <sup>3</sup> ), $B_{sol}$ (Å <sup>2</sup> )	0.34 , 54.8	EDS
L-test for twinning <sup>2</sup>	$\langle  L  \rangle = 0.49$ , $\langle L^2 \rangle = 0.33$	Xtrriage
Estimated twinning fraction	No twinning to report.	Xtrriage
$F_o, F_c$ correlation	0.89	EDS
Total number of atoms	14907	wwPDB-VP
Average B, all atoms (Å <sup>2</sup> )	61.0	wwPDB-VP

Xtrriage's analysis on translational NCS is as follows: *The largest off-origin peak in the Patterson function is 3.88% of the height of the origin peak. No significant pseudotranslation is detected.*

<sup>1</sup>Intensities estimated from amplitudes.

<sup>2</sup>Theoretical values of  $\langle |L| \rangle$ ,  $\langle L^2 \rangle$  for acentric reflections are 0.5, 0.333 respectively for untwinned datasets, and 0.375, 0.2 for perfectly twinned datasets.

## 5 Model quality [i](#)

### 5.1 Standard geometry [i](#)

Bond lengths and bond angles in the following residue types are not validated in this section: NAG

The Z score for a bond length (or angle) is the number of standard deviations the observed value is removed from the expected value. A bond length (or angle) with  $|Z| > 5$  is considered an outlier worth inspection. RMSZ is the root-mean-square of all Z scores of the bond lengths (or angles).

Mol	Chain	Bond lengths		Bond angles	
		RMSZ	# Z  >5	RMSZ	# Z  >5
1	A	0.27	0/3901	0.45	0/5343
2	B	0.26	0/859	0.39	0/1177
3	C	0.34	0/1615	0.51	0/2204
4	D	0.35	0/1631	0.53	0/2238
All	All	0.30	0/8006	0.47	0/10962

There are no bond length outliers.

There are no bond angle outliers.

There are no chirality outliers.

There are no planarity outliers.

### 5.2 Too-close contacts [i](#)

In the following table, the Non-H and H(model) columns list the number of non-hydrogen atoms and hydrogen atoms in the chain respectively. The H(added) column lists the number of hydrogen atoms added and optimized by MolProbity. The Clashes column lists the number of clashes within the asymmetric unit, whereas Symm-Clashes lists symmetry-related clashes.

Mol	Chain	Non-H	H(model)	H(added)	Clashes	Symm-Clashes
1	A	3833	3231	3244	12	0
2	B	836	656	693	6	0
3	C	1581	1483	1480	6	0
4	D	1589	1499	1495	12	0
5	E	28	25	25	1	0
5	F	28	25	25	1	0
6	A	28	26	26	0	0
6	D	14	13	13	0	0
7	A	3	0	0	0	0

*Continued on next page...*

Continued from previous page...

Mol	Chain	Non-H	H(model)	H(added)	Clashes	Symm-Clashes
7	C	3	0	0	0	0
7	D	6	0	0	0	0
All	All	7949	6958	7001	36	0

The all-atom clashscore is defined as the number of clashes found per 1000 atoms (including hydrogen atoms). The all-atom clashscore for this structure is 2.

The worst 5 of 36 close contacts within the same asymmetric unit are listed below, sorted by their clash magnitude.

Atom-1	Atom-2	Interatomic distance (Å)	Clash overlap (Å)
1:A:518:LEU:O	1:A:523:ARG:NH2	2.18	0.77
1:A:407:LYS:NZ	1:A:434:ASP:OD2	2.25	0.69
4:D:203:ASN:N	4:D:203:ASN:OD1	2.30	0.64
2:B:68:PHE:CD1	2:B:83:MET:HA	2.34	0.62
2:B:6:GLU:OE2	2:B:123:GLY:N	2.35	0.60

There are no symmetry-related clashes.

## 5.3 Torsion angles [i](#)

### 5.3.1 Protein backbone [i](#)

In the following table, the Percentiles column shows the percent Ramachandran outliers of the chain as a percentile score with respect to all X-ray entries followed by that with respect to entries of similar resolution.

The Analysed column shows the number of residues for which the backbone conformation was analysed, and the total number of residues.

Mol	Chain	Analysed	Favoured	Allowed	Outliers	Percentiles	
1	A	564/624 (90%)	496 (88%)	65 (12%)	3 (0%)	29	60
2	B	112/138 (81%)	94 (84%)	18 (16%)	0	100	100
3	C	209/211 (99%)	199 (95%)	10 (5%)	0	100	100
4	D	209/220 (95%)	200 (96%)	9 (4%)	0	100	100
All	All	1094/1193 (92%)	989 (90%)	102 (9%)	3 (0%)	41	70

All (3) Ramachandran outliers are listed below:

Mol	Chain	Res	Type
1	A	209	HIS
1	A	567	CYS
1	A	219	PRO

### 5.3.2 Protein sidechains [i](#)

In the following table, the Percentiles column shows the percent sidechain outliers of the chain as a percentile score with respect to all X-ray entries followed by that with respect to entries of similar resolution.

The Analysed column shows the number of residues for which the sidechain conformation was analysed, and the total number of residues.

Mol	Chain	Analysed	Rotameric	Outliers	Percentiles	
1	A	352/545 (65%)	349 (99%)	3 (1%)	78	90
2	B	69/114 (60%)	69 (100%)	0	100	100
3	C	176/188 (94%)	176 (100%)	0	100	100
4	D	177/190 (93%)	172 (97%)	5 (3%)	43	71
All	All	774/1037 (75%)	766 (99%)	8 (1%)	76	89

5 of 8 residues with a non-rotameric sidechain are listed below:

Mol	Chain	Res	Type
4	D	203	ASN
4	D	144	LEU
4	D	25	SER
4	D	12	VAL
4	D	118	SER

Sometimes sidechains can be flipped to improve hydrogen bonding and reduce clashes. All (2) such sidechains are listed below:

Mol	Chain	Res	Type
1	A	483	HIS
4	D	177	GLN

### 5.3.3 RNA [i](#)

There are no RNA molecules in this entry.

## 5.4 Non-standard residues in protein, DNA, RNA chains [i](#)

There are no non-standard protein/DNA/RNA residues in this entry.

## 5.5 Carbohydrates [i](#)

4 monosaccharides are modelled in this entry.

In the following table, the Counts columns list the number of bonds (or angles) for which Mogul statistics could be retrieved, the number of bonds (or angles) that are observed in the model and the number of bonds (or angles) that are defined in the Chemical Component Dictionary. The Link column lists molecule types, if any, to which the group is linked. The Z score for a bond length (or angle) is the number of standard deviations the observed value is removed from the expected value. A bond length (or angle) with  $|Z| > 2$  is considered an outlier worth inspection. RMSZ is the root-mean-square of all Z scores of the bond lengths (or angles).

Mol	Type	Chain	Res	Link	Bond lengths			Bond angles		
					Counts	RMSZ	# Z  > 2	Counts	RMSZ	# Z  > 2
5	NAG	E	1	1,5	14,14,15	0.44	0	17,19,21	0.34	0
5	NAG	E	2	5	14,14,15	0.41	0	17,19,21	0.39	0
5	NAG	F	1	1,5	14,14,15	0.46	0	17,19,21	0.41	0
5	NAG	F	2	5	14,14,15	0.47	0	17,19,21	0.58	0

In the following table, the Chirals column lists the number of chiral outliers, the number of chiral centers analysed, the number of these observed in the model and the number defined in the Chemical Component Dictionary. Similar counts are reported in the Torsion and Rings columns. '-' means no outliers of that kind were identified.

Mol	Type	Chain	Res	Link	Chirals	Torsions	Rings
5	NAG	E	1	1,5	-	0/6/23/26	0/1/1/1
5	NAG	E	2	5	-	2/6/23/26	0/1/1/1
5	NAG	F	1	1,5	-	2/6/23/26	0/1/1/1
5	NAG	F	2	5	-	4/6/23/26	0/1/1/1

There are no bond length outliers.

There are no bond angle outliers.

There are no chirality outliers.

5 of 8 torsion outliers are listed below:

Mol	Chain	Res	Type	Atoms
5	E	2	NAG	C4-C5-C6-O6
5	F	1	NAG	O5-C5-C6-O6

*Continued on next page...*

Continued from previous page...

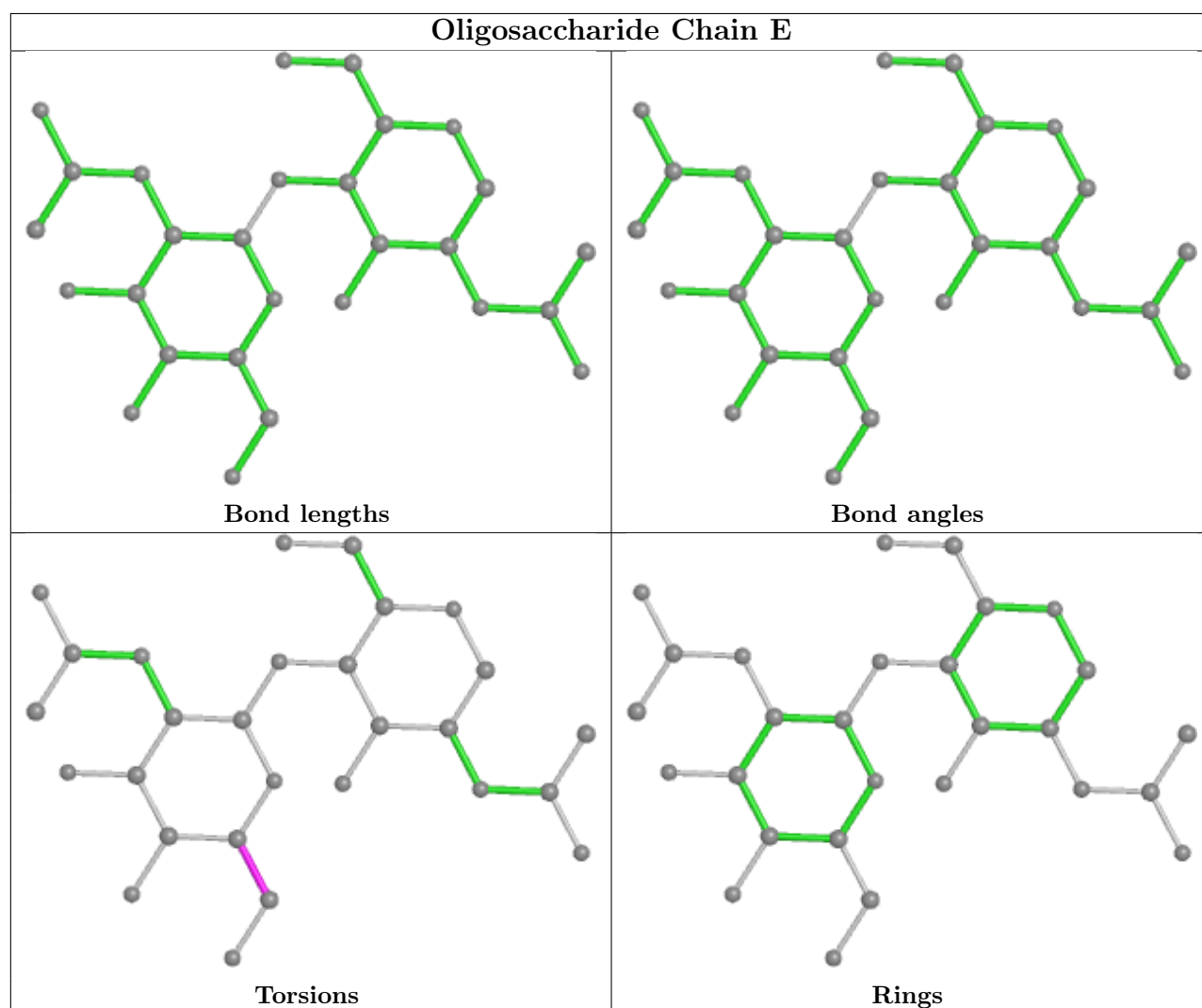
Mol	Chain	Res	Type	Atoms
5	F	2	NAG	C8-C7-N2-C2
5	F	2	NAG	O7-C7-N2-C2
5	E	2	NAG	O5-C5-C6-O6

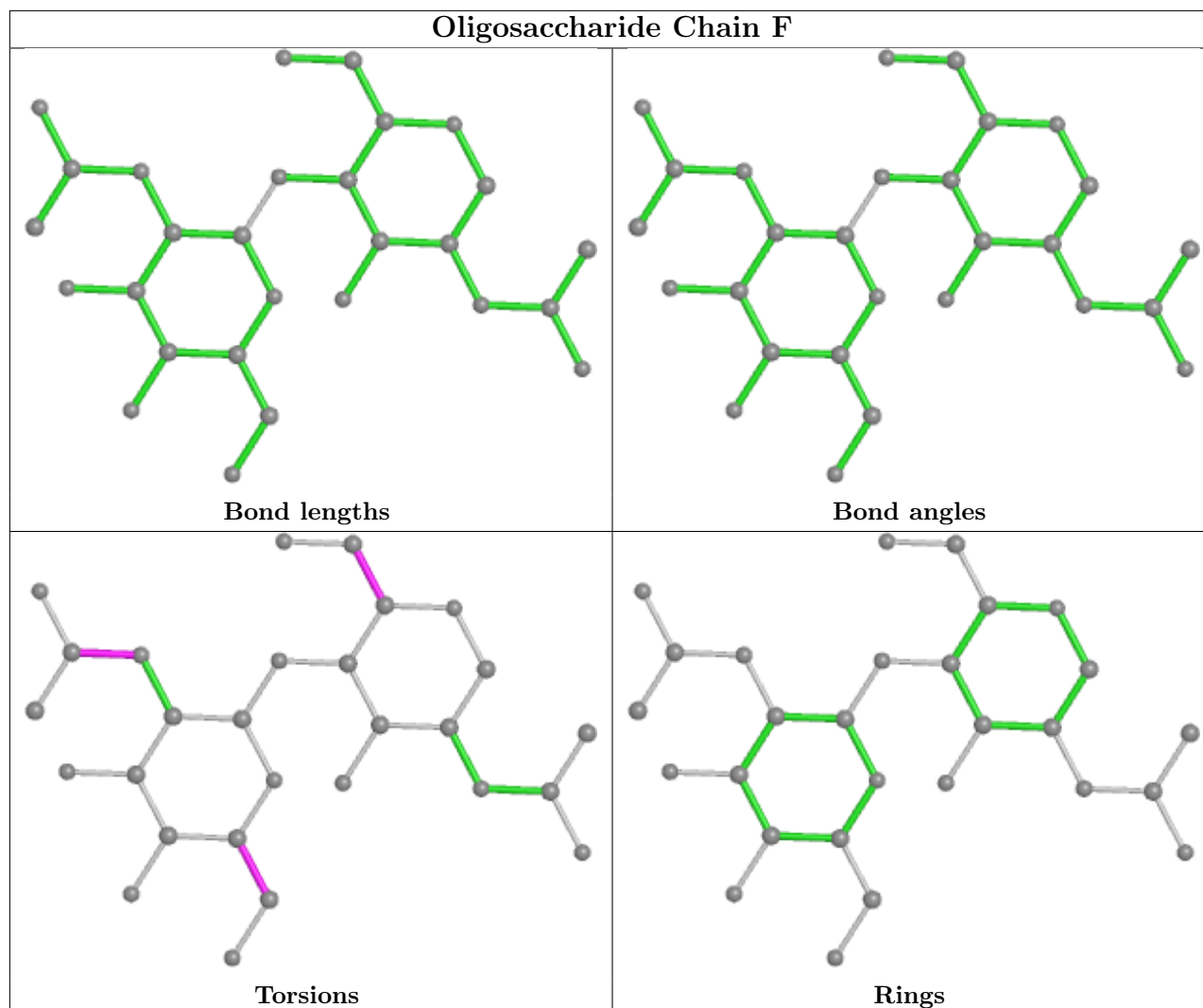
There are no ring outliers.

3 monomers are involved in 2 short contacts:

Mol	Chain	Res	Type	Clashes	Symm-Clashes
5	E	1	NAG	1	0
5	F	1	NAG	1	0
5	F	2	NAG	1	0

The following is a two-dimensional graphical depiction of Mogul quality analysis of bond lengths, bond angles, torsion angles, and ring geometry for oligosaccharide.





## 5.6 Ligand geometry [i](#)

3 ligands are modelled in this entry.

In the following table, the Counts columns list the number of bonds (or angles) for which Mogul statistics could be retrieved, the number of bonds (or angles) that are observed in the model and the number of bonds (or angles) that are defined in the Chemical Component Dictionary. The Link column lists molecule types, if any, to which the group is linked. The Z score for a bond length (or angle) is the number of standard deviations the observed value is removed from the expected value. A bond length (or angle) with  $|Z| > 2$  is considered an outlier worth inspection. RMSZ is the root-mean-square of all Z scores of the bond lengths (or angles).

Mol	Type	Chain	Res	Link	Bond lengths			Bond angles		
					Counts	RMSZ	$\# Z  > 2$	Counts	RMSZ	$\# Z  > 2$
6	NAG	A	704	1	14,14,15	0.51	0	17,19,21	0.56	0
6	NAG	D	301	4	14,14,15	0.56	0	17,19,21	1.13	1 (5%)
6	NAG	A	703	1	14,14,15	0.24	0	17,19,21	0.49	0

In the following table, the Chirals column lists the number of chiral outliers, the number of chiral centers analysed, the number of these observed in the model and the number defined in the Chemical Component Dictionary. Similar counts are reported in the Torsion and Rings columns. '-' means no outliers of that kind were identified.

Mol	Type	Chain	Res	Link	Chirals	Torsions	Rings
6	NAG	A	704	1	-	2/6/23/26	0/1/1/1
6	NAG	D	301	4	-	3/6/23/26	0/1/1/1
6	NAG	A	703	1	-	2/6/23/26	0/1/1/1

There are no bond length outliers.

All (1) bond angle outliers are listed below:

Mol	Chain	Res	Type	Atoms	Z	Observed(°)	Ideal(°)
6	D	301	NAG	O5-C5-C4	-2.01	105.94	110.83

There are no chirality outliers.

5 of 7 torsion outliers are listed below:

Mol	Chain	Res	Type	Atoms
6	A	703	NAG	C8-C7-N2-C2
6	A	703	NAG	O7-C7-N2-C2
6	A	704	NAG	C8-C7-N2-C2
6	A	704	NAG	O7-C7-N2-C2
6	D	301	NAG	C8-C7-N2-C2

There are no ring outliers.

No monomer is involved in short contacts.

## 5.7 Other polymers [i](#)

There are no such residues in this entry.

## 5.8 Polymer linkage issues [i](#)

There are no chain breaks in this entry.



## 6 Fit of model and data [i](#)

### 6.1 Protein, DNA and RNA chains [i](#)

In the following table, the column labelled '#RSRZ > 2' contains the number (and percentage) of RSRZ outliers, followed by percent RSRZ outliers for the chain as percentile scores relative to all X-ray entries and entries of similar resolution. The OWAB column contains the minimum, median, 95<sup>th</sup> percentile and maximum values of the occupancy-weighted average B-factor per residue. The column labelled 'Q < 0.9' lists the number of (and percentage) of residues with an average occupancy less than 0.9.

Mol	Chain	Analysed	<RSRZ>	#RSRZ>2	OWAB(Å <sup>2</sup> )	Q<0.9
1	A	570/624 (91%)	0.30	40 (7%) 16 6	16, 77, 156, 180	0
2	B	116/138 (84%)	0.44	9 (7%) 13 4	38, 86, 118, 129	0
3	C	211/211 (100%)	-0.36	0 100 100	14, 29, 50, 67	0
4	D	213/220 (96%)	-0.39	0 100 100	14, 26, 46, 72	0
All	All	1110/1193 (93%)	0.06	49 (4%) 34 16	14, 46, 145, 180	0

The worst 5 of 49 RSRZ outliers are listed below:

Mol	Chain	Res	Type	RSRZ
1	A	130	PRO	6.3
1	A	219	PRO	5.9
1	A	603	GLY	5.4
1	A	50	TYR	5.1
2	B	88	PRO	4.8

### 6.2 Non-standard residues in protein, DNA, RNA chains [i](#)

There are no non-standard protein/DNA/RNA residues in this entry.

### 6.3 Carbohydrates [i](#)

In the following table, the Atoms column lists the number of modelled atoms in the group and the number defined in the chemical component dictionary. The B-factors column lists the minimum, median, 95<sup>th</sup> percentile and maximum values of B factors of atoms in the group. The column labelled 'Q < 0.9' lists the number of atoms with occupancy less than 0.9.

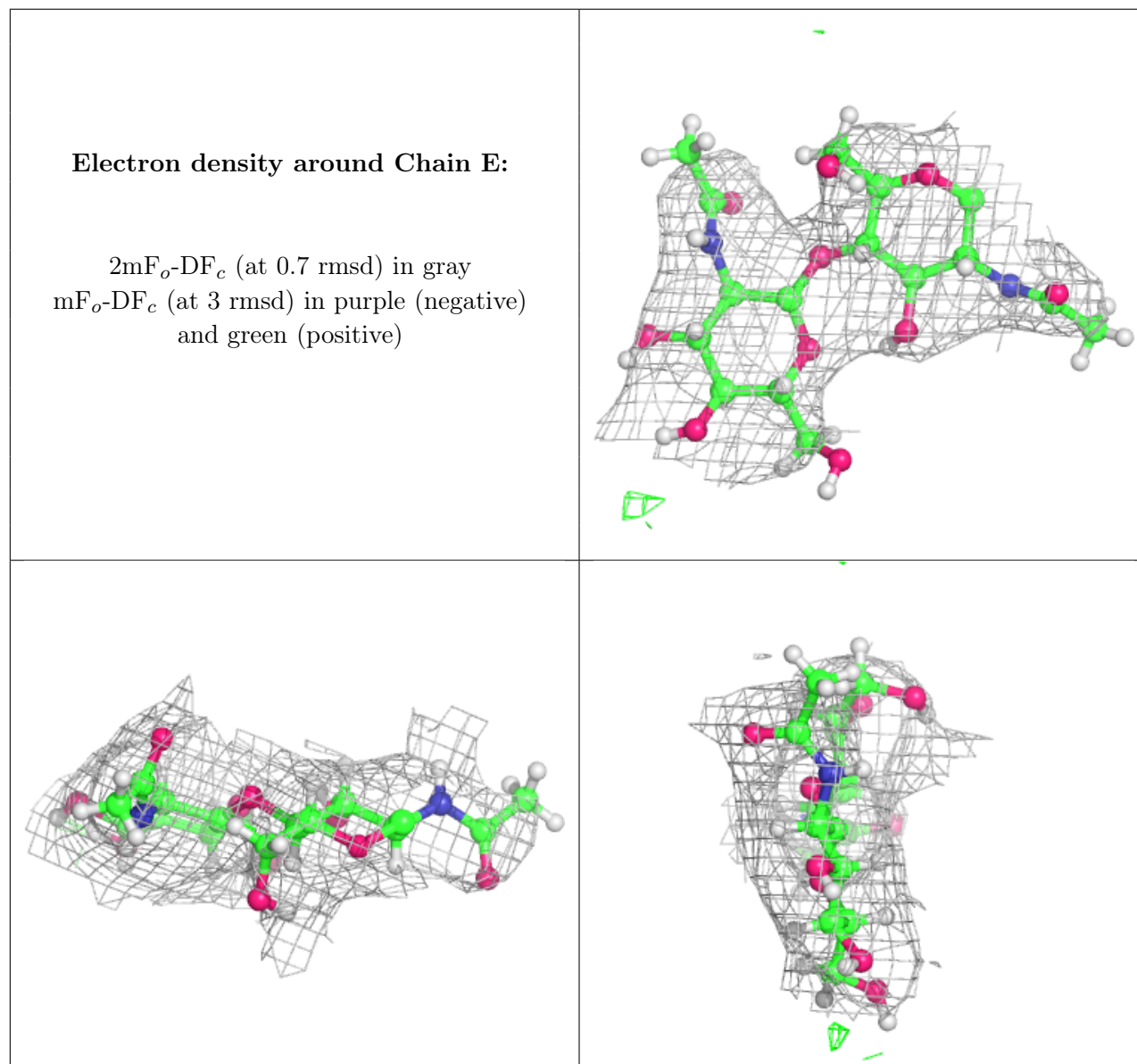
Mol	Type	Chain	Res	Atoms	RSCC	RSR	B-factors(Å <sup>2</sup> )	Q<0.9
5	NAG	F	2	14/15	0.77	0.27	55,81,103,111	0
5	NAG	E	2	14/15	0.84	0.26	54,73,92,103	0

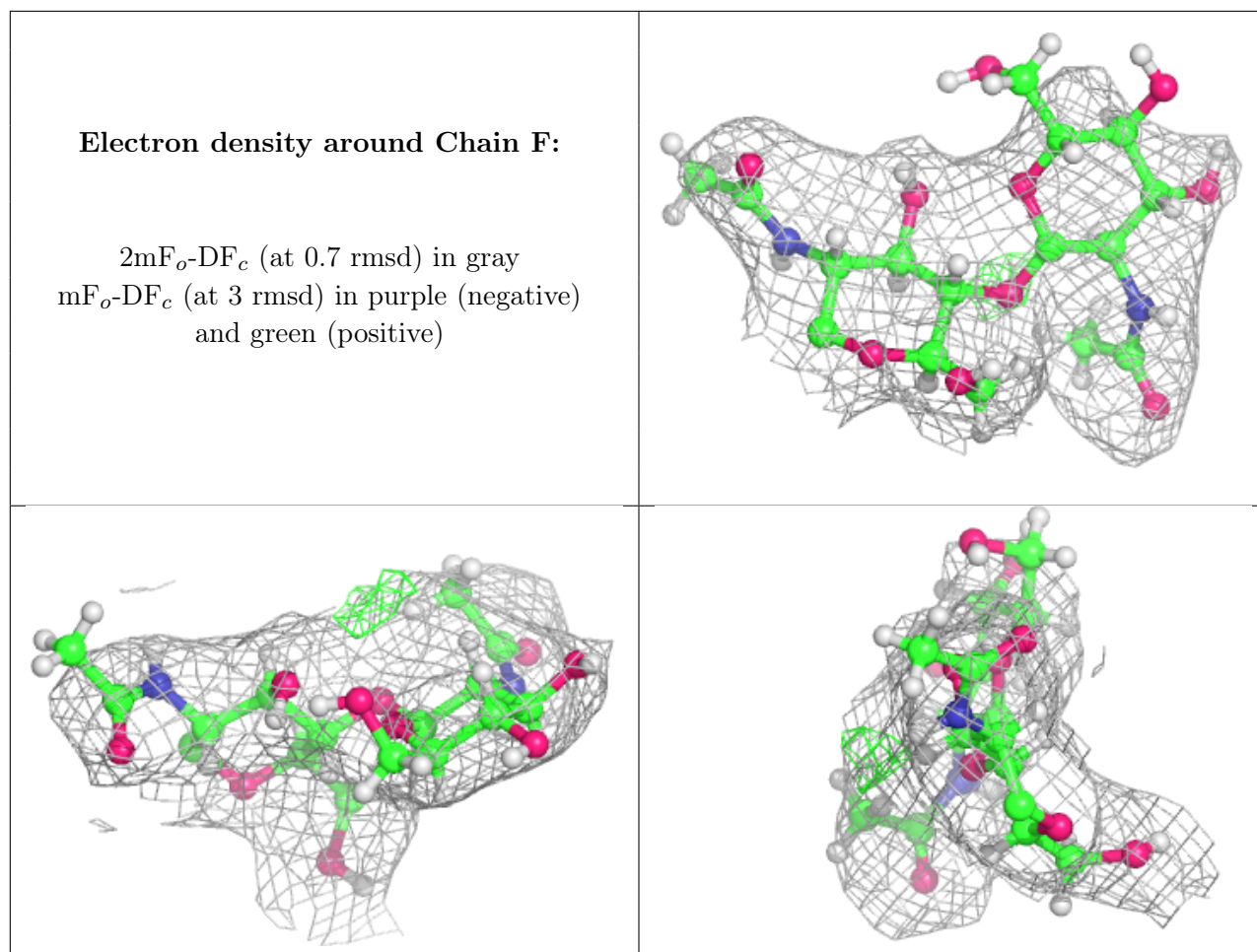
*Continued on next page...*

*Continued from previous page...*

Mol	Type	Chain	Res	Atoms	RSCC	RSR	B-factors( $\text{\AA}^2$ )	Q<0.9
5	NAG	F	1	14/15	0.90	0.17	35,48,61,66	0
5	NAG	E	1	14/15	0.92	0.22	57,67,78,82	0

The following is a graphical depiction of the model fit to experimental electron density for oligosaccharide. Each fit is shown from different orientation to approximate a three-dimensional view.





## 6.4 Ligands [i](#)

In the following table, the Atoms column lists the number of modelled atoms in the group and the number defined in the chemical component dictionary. The B-factors column lists the minimum, median, 95<sup>th</sup> percentile and maximum values of B factors of atoms in the group. The column labelled 'Q<0.9' lists the number of atoms with occupancy less than 0.9.

Mol	Type	Chain	Res	Atoms	RSCC	RSR	B-factors(Å <sup>2</sup> )	Q<0.9
6	NAG	D	301	14/15	0.69	0.25	55,65,74,89	0
6	NAG	A	704	14/15	0.84	0.28	90,106,126,135	0
6	NAG	A	703	14/15	0.85	0.27	76,87,103,104	0

## 6.5 Other polymers [i](#)

There are no such residues in this entry.