



Full wwPDB X-ray Structure Validation Report ⓘ

Oct 9, 2023 – 03:20 PM EDT

PDB ID : 7KRY
Title : Co-crystal structure of alpha glucosidase with compound 11
Authors : Karade, S.S.; Mariuzza, R.A.
Deposited on : 2020-11-20
Resolution : 2.55 Å(reported)

This is a Full wwPDB X-ray Structure Validation Report for a publicly released PDB entry.

We welcome your comments at validation@mail.wwpdb.org

A user guide is available at

<https://www.wwpdb.org/validation/2017/XrayValidationReportHelp>

with specific help available everywhere you see the ⓘ symbol.

The types of validation reports are described at

<http://www.wwpdb.org/validation/2017/FAQs#types>.

The following versions of software and data (see [references ⓘ](#)) were used in the production of this report:

MolProbity : 4.02b-467
Mogul : 1.8.5 (274361), CSD as541be (2020)
Xtriage (Phenix) : 1.13
EDS : 2.35.1
buster-report : 1.1.7 (2018)
Percentile statistics : 20191225.v01 (using entries in the PDB archive December 25th 2019)
Refmac : 5.8.0158
CCP4 : 7.0.044 (Gargrove)
Ideal geometry (proteins) : Engh & Huber (2001)
Ideal geometry (DNA, RNA) : Parkinson et al. (1996)
Validation Pipeline (wwPDB-VP) : 2.35.1

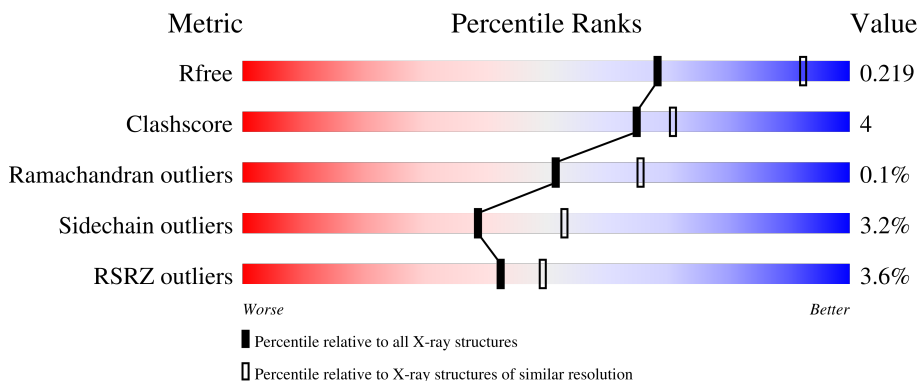
1 Overall quality at a glance

The following experimental techniques were used to determine the structure:

X-RAY DIFFRACTION

The reported resolution of this entry is 2.55 Å.

Percentile scores (ranging between 0-100) for global validation metrics of the entry are shown in the following graphic. The table shows the number of entries on which the scores are based.



Metric	Whole archive (#Entries)	Similar resolution (#Entries, resolution range(Å))
R_{free}	130704	1284 (2.56-2.52)
Clashscore	141614	1332 (2.56-2.52)
Ramachandran outliers	138981	1315 (2.56-2.52)
Sidechain outliers	138945	1315 (2.56-2.52)
RSRZ outliers	127900	1272 (2.56-2.52)

The table below summarises the geometric issues observed across the polymeric chains and their fit to the electron density. The red, orange, yellow and green segments of the lower bar indicate the fraction of residues that contain outliers for ≥ 3 , 2, 1 and 0 types of geometric quality criteria respectively. A grey segment represents the fraction of residues that are not modelled. The numeric value for each fraction is indicated below the corresponding segment, with a dot representing fractions $\leq 5\%$. The upper red bar (where present) indicates the fraction of residues that have poor fit to the electron density. The numeric value is given above the bar.

Mol	Chain	Length	Quality of chain
1	A	955	 77% 12% 11%
1	C	955	 80% 9% 10%
2	B	554	 14% 85%
2	D	554	 14% 85%

2 Entry composition [i](#)

There are 9 unique types of molecules in this entry. The entry contains 15587 atoms, of which 0 are hydrogens and 0 are deuteriums.

In the tables below, the ZeroOcc column contains the number of atoms modelled with zero occupancy, the AltConf column contains the number of residues with at least one atom in alternate conformation and the Trace column contains the number of residues modelled with at most 2 atoms.

- Molecule 1 is a protein called Neutral alpha-glucosidase AB.

Mol	Chain	Residues	Atoms					ZeroOcc	AltConf	Trace
			Total	C	N	O	S			
1	A	854	6865	4402	1181	1252	30	0	5	0
1	C	857	6892	4413	1186	1265	28	0	4	0

There are 88 discrepancies between the modelled and reference sequences:

Chain	Residue	Modelled	Actual	Comment	Reference
A	2	MET	-	initiating methionine	UNP Q8BHN3
A	3	GLY	-	expression tag	UNP Q8BHN3
A	4	ILE	-	expression tag	UNP Q8BHN3
A	5	LEU	-	expression tag	UNP Q8BHN3
A	6	PRO	-	expression tag	UNP Q8BHN3
A	7	SER	-	expression tag	UNP Q8BHN3
A	8	PRO	-	expression tag	UNP Q8BHN3
A	9	GLY	-	expression tag	UNP Q8BHN3
A	10	MET	-	expression tag	UNP Q8BHN3
A	11	PRO	-	expression tag	UNP Q8BHN3
A	12	ALA	-	expression tag	UNP Q8BHN3
A	13	LEU	-	expression tag	UNP Q8BHN3
A	14	LEU	-	expression tag	UNP Q8BHN3
A	15	SER	-	expression tag	UNP Q8BHN3
A	16	LEU	-	expression tag	UNP Q8BHN3
A	17	VAL	-	expression tag	UNP Q8BHN3
A	18	SER	-	expression tag	UNP Q8BHN3
A	19	LEU	-	expression tag	UNP Q8BHN3
A	20	LEU	-	expression tag	UNP Q8BHN3
A	21	SER	-	expression tag	UNP Q8BHN3
A	22	VAL	-	expression tag	UNP Q8BHN3
A	23	LEU	-	expression tag	UNP Q8BHN3
A	24	LEU	-	expression tag	UNP Q8BHN3
A	25	MET	-	expression tag	UNP Q8BHN3
A	26	GLY	-	expression tag	UNP Q8BHN3

Continued on next page...

Continued from previous page...

Chain	Residue	Modelled	Actual	Comment	Reference
A	27	CYS	-	expression tag	UNP Q8BHN3
A	28	VAL	-	expression tag	UNP Q8BHN3
A	29	ALA	-	expression tag	UNP Q8BHN3
A	30	GLU	-	expression tag	UNP Q8BHN3
A	31	THR	-	expression tag	UNP Q8BHN3
A	32	GLY	-	expression tag	UNP Q8BHN3
A	97	ASP	ASN	engineered mutation	UNP Q8BHN3
A	967	SER	-	expression tag	UNP Q8BHN3
A	968	ALA	-	expression tag	UNP Q8BHN3
A	969	TRP	-	expression tag	UNP Q8BHN3
A	970	SER	-	expression tag	UNP Q8BHN3
A	971	HIS	-	expression tag	UNP Q8BHN3
A	972	PRO	-	expression tag	UNP Q8BHN3
A	973	GLN	-	expression tag	UNP Q8BHN3
A	974	PHE	-	expression tag	UNP Q8BHN3
A	975	GLU	-	expression tag	UNP Q8BHN3
A	976	LYS	-	expression tag	UNP Q8BHN3
A	977	LEU	-	expression tag	UNP Q8BHN3
A	978	GLU	-	expression tag	UNP Q8BHN3
C	2	MET	-	initiating methionine	UNP Q8BHN3
C	3	GLY	-	expression tag	UNP Q8BHN3
C	4	ILE	-	expression tag	UNP Q8BHN3
C	5	LEU	-	expression tag	UNP Q8BHN3
C	6	PRO	-	expression tag	UNP Q8BHN3
C	7	SER	-	expression tag	UNP Q8BHN3
C	8	PRO	-	expression tag	UNP Q8BHN3
C	9	GLY	-	expression tag	UNP Q8BHN3
C	10	MET	-	expression tag	UNP Q8BHN3
C	11	PRO	-	expression tag	UNP Q8BHN3
C	12	ALA	-	expression tag	UNP Q8BHN3
C	13	LEU	-	expression tag	UNP Q8BHN3
C	14	LEU	-	expression tag	UNP Q8BHN3
C	15	SER	-	expression tag	UNP Q8BHN3
C	16	LEU	-	expression tag	UNP Q8BHN3
C	17	VAL	-	expression tag	UNP Q8BHN3
C	18	SER	-	expression tag	UNP Q8BHN3
C	19	LEU	-	expression tag	UNP Q8BHN3
C	20	LEU	-	expression tag	UNP Q8BHN3
C	21	SER	-	expression tag	UNP Q8BHN3
C	22	VAL	-	expression tag	UNP Q8BHN3
C	23	LEU	-	expression tag	UNP Q8BHN3
C	24	LEU	-	expression tag	UNP Q8BHN3

Continued on next page...

Continued from previous page...

Chain	Residue	Modelled	Actual	Comment	Reference
C	25	MET	-	expression tag	UNP Q8BHN3
C	26	GLY	-	expression tag	UNP Q8BHN3
C	27	CYS	-	expression tag	UNP Q8BHN3
C	28	VAL	-	expression tag	UNP Q8BHN3
C	29	ALA	-	expression tag	UNP Q8BHN3
C	30	GLU	-	expression tag	UNP Q8BHN3
C	31	THR	-	expression tag	UNP Q8BHN3
C	32	GLY	-	expression tag	UNP Q8BHN3
C	97	ASP	ASN	engineered mutation	UNP Q8BHN3
C	967	SER	-	expression tag	UNP Q8BHN3
C	968	ALA	-	expression tag	UNP Q8BHN3
C	969	TRP	-	expression tag	UNP Q8BHN3
C	970	SER	-	expression tag	UNP Q8BHN3
C	971	HIS	-	expression tag	UNP Q8BHN3
C	972	PRO	-	expression tag	UNP Q8BHN3
C	973	GLN	-	expression tag	UNP Q8BHN3
C	974	PHE	-	expression tag	UNP Q8BHN3
C	975	GLU	-	expression tag	UNP Q8BHN3
C	976	LYS	-	expression tag	UNP Q8BHN3
C	977	LEU	-	expression tag	UNP Q8BHN3
C	978	GLU	-	expression tag	UNP Q8BHN3

- Molecule 2 is a protein called Glucosidase 2 subunit beta.

Mol	Chain	Residues	Atoms					ZeroOcc	AltConf	Trace
2	B	84	Total	C	N	O	S	0	0	0
			585	343	99	133	10			
2	D	84	Total	C	N	O	S	0	0	0
			601	359	97	135	10			

There are 102 discrepancies between the modelled and reference sequences:

Chain	Residue	Modelled	Actual	Comment	Reference
B	-16	MET	-	initiating methionine	UNP O08795
B	-15	GLY	-	expression tag	UNP O08795
B	-14	ILE	-	expression tag	UNP O08795
B	-13	LEU	-	expression tag	UNP O08795
B	-12	PRO	-	expression tag	UNP O08795
B	-11	SER	-	expression tag	UNP O08795
B	-10	PRO	-	expression tag	UNP O08795
B	-9	GLY	-	expression tag	UNP O08795
B	-8	MET	-	expression tag	UNP O08795

Continued on next page...

Continued from previous page...

Chain	Residue	Modelled	Actual	Comment	Reference
B	-7	PRO	-	expression tag	UNP O08795
B	-6	ALA	-	expression tag	UNP O08795
B	-5	LEU	-	expression tag	UNP O08795
B	-4	LEU	-	expression tag	UNP O08795
B	-3	SER	-	expression tag	UNP O08795
B	-2	LEU	-	expression tag	UNP O08795
B	-1	VAL	-	expression tag	UNP O08795
B	0	SER	-	expression tag	UNP O08795
B	1	LEU	-	expression tag	UNP O08795
B	2	LEU	-	expression tag	UNP O08795
B	3	SER	-	expression tag	UNP O08795
B	4	VAL	-	expression tag	UNP O08795
B	5	LEU	-	expression tag	UNP O08795
B	6	LEU	-	expression tag	UNP O08795
B	7	MET	-	expression tag	UNP O08795
B	8	GLY	-	expression tag	UNP O08795
B	9	CYS	-	expression tag	UNP O08795
B	10	VAL	-	expression tag	UNP O08795
B	11	ALA	-	expression tag	UNP O08795
B	12	GLU	-	expression tag	UNP O08795
B	13	THR	-	expression tag	UNP O08795
B	14	GLY	-	expression tag	UNP O08795
B	518	SER	-	expression tag	UNP O08795
B	519	ALA	-	expression tag	UNP O08795
B	520	TRP	-	expression tag	UNP O08795
B	521	SER	-	expression tag	UNP O08795
B	522	HIS	-	expression tag	UNP O08795
B	523	PRO	-	expression tag	UNP O08795
B	524	GLN	-	expression tag	UNP O08795
B	525	PHE	-	expression tag	UNP O08795
B	526	GLU	-	expression tag	UNP O08795
B	527	LYS	-	expression tag	UNP O08795
B	528	LEU	-	expression tag	UNP O08795
B	529	GLU	-	expression tag	UNP O08795
B	530	THR	-	expression tag	UNP O08795
B	531	LYS	-	expression tag	UNP O08795
B	532	HIS	-	expression tag	UNP O08795
B	533	HIS	-	expression tag	UNP O08795
B	534	HIS	-	expression tag	UNP O08795
B	535	HIS	-	expression tag	UNP O08795
B	536	HIS	-	expression tag	UNP O08795
B	537	HIS	-	expression tag	UNP O08795

Continued on next page...

Continued from previous page...

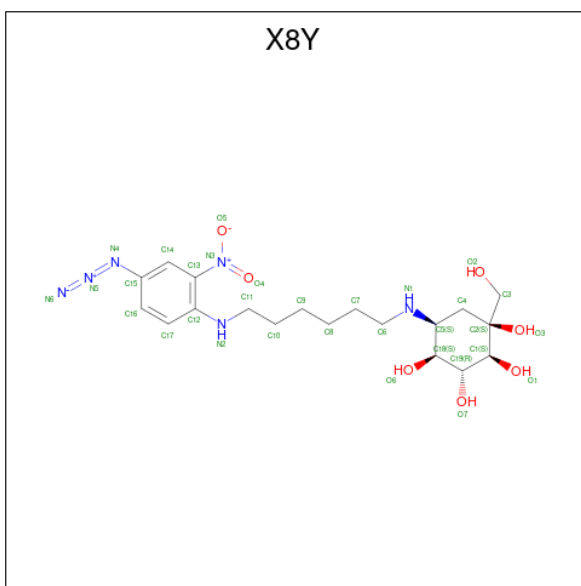
Chain	Residue	Modelled	Actual	Comment	Reference
D	-16	MET	-	initiating methionine	UNP O08795
D	-15	GLY	-	expression tag	UNP O08795
D	-14	ILE	-	expression tag	UNP O08795
D	-13	LEU	-	expression tag	UNP O08795
D	-12	PRO	-	expression tag	UNP O08795
D	-11	SER	-	expression tag	UNP O08795
D	-10	PRO	-	expression tag	UNP O08795
D	-9	GLY	-	expression tag	UNP O08795
D	-8	MET	-	expression tag	UNP O08795
D	-7	PRO	-	expression tag	UNP O08795
D	-6	ALA	-	expression tag	UNP O08795
D	-5	LEU	-	expression tag	UNP O08795
D	-4	LEU	-	expression tag	UNP O08795
D	-3	SER	-	expression tag	UNP O08795
D	-2	LEU	-	expression tag	UNP O08795
D	-1	VAL	-	expression tag	UNP O08795
D	0	SER	-	expression tag	UNP O08795
D	1	LEU	-	expression tag	UNP O08795
D	2	LEU	-	expression tag	UNP O08795
D	3	SER	-	expression tag	UNP O08795
D	4	VAL	-	expression tag	UNP O08795
D	5	LEU	-	expression tag	UNP O08795
D	6	LEU	-	expression tag	UNP O08795
D	7	MET	-	expression tag	UNP O08795
D	8	GLY	-	expression tag	UNP O08795
D	9	CYS	-	expression tag	UNP O08795
D	10	VAL	-	expression tag	UNP O08795
D	11	ALA	-	expression tag	UNP O08795
D	12	GLU	-	expression tag	UNP O08795
D	13	THR	-	expression tag	UNP O08795
D	14	GLY	-	expression tag	UNP O08795
D	518	SER	-	expression tag	UNP O08795
D	519	ALA	-	expression tag	UNP O08795
D	520	TRP	-	expression tag	UNP O08795
D	521	SER	-	expression tag	UNP O08795
D	522	HIS	-	expression tag	UNP O08795
D	523	PRO	-	expression tag	UNP O08795
D	524	GLN	-	expression tag	UNP O08795
D	525	PHE	-	expression tag	UNP O08795
D	526	GLU	-	expression tag	UNP O08795
D	527	LYS	-	expression tag	UNP O08795
D	528	LEU	-	expression tag	UNP O08795

Continued on next page...

Continued from previous page...

Chain	Residue	Modelled	Actual	Comment	Reference
D	529	GLU	-	expression tag	UNP O08795
D	530	THR	-	expression tag	UNP O08795
D	531	LYS	-	expression tag	UNP O08795
D	532	HIS	-	expression tag	UNP O08795
D	533	HIS	-	expression tag	UNP O08795
D	534	HIS	-	expression tag	UNP O08795
D	535	HIS	-	expression tag	UNP O08795
D	536	HIS	-	expression tag	UNP O08795
D	537	HIS	-	expression tag	UNP O08795

- Molecule 3 is (1S,2S,3R,4S,5S)-5-({6-[(4-azido-2-nitrophenyl)amino]hexyl}amino)-1-(hydroxymethyl)cyclohexane-1,2,3,4-tetrol (three-letter code: X8Y) (formula: C₁₉H₃₀N₆O₇) (labeled as "Ligand of Interest" by depositor).



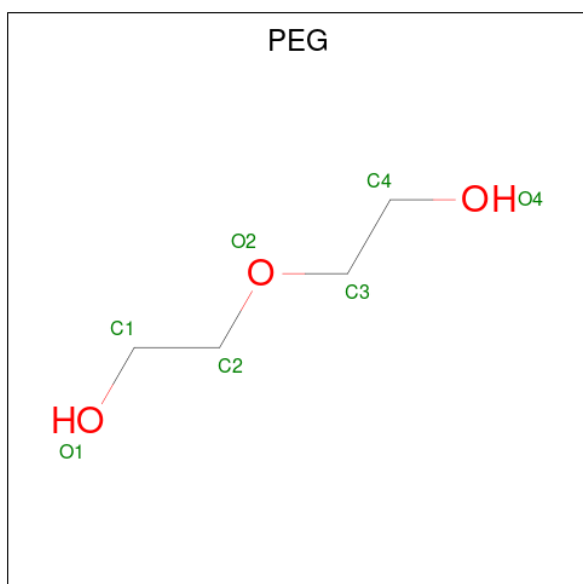
Mol	Chain	Residues	Atoms			ZeroOcc	AltConf	
3	A	1	Total	C	N	O	0	0
				32	19	6 7		
3	C	1	Total	C	N	O	0	0
				32	19	6 7		

- Molecule 4 is 1,2-ETHANEDIOL (three-letter code: EDO) (formula: C₂H₆O₂).



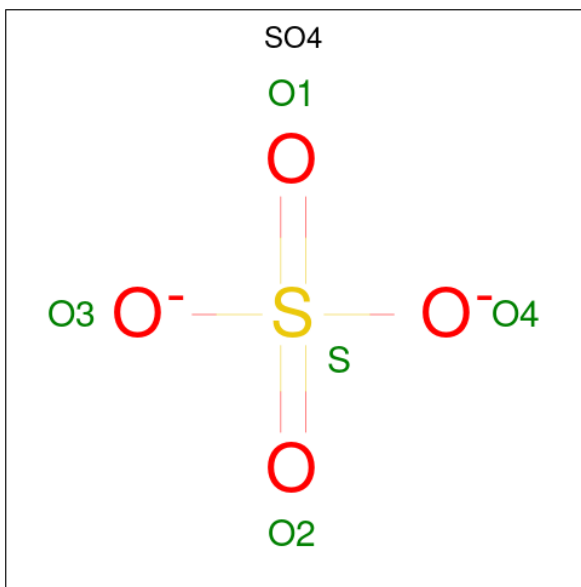
Mol	Chain	Residues	Atoms	ZeroOcc	AltConf
4	A	1	Total C O 4 2 2	0	0
4	A	1	Total C O 4 2 2	0	0
4	A	1	Total C O 4 2 2	0	0
4	A	1	Total C O 4 2 2	0	0
4	C	1	Total C O 4 2 2	0	0

- Molecule 5 is DI(HYDROXYETHYL)ETHER (three-letter code: PEG) (formula: C₄H₁₀O₃).



Mol	Chain	Residues	Atoms	ZeroOcc	AltConf
5	A	1	Total C O 7 4 3	0	0
5	C	1	Total C O 7 4 3	0	0

- Molecule 6 is SULFATE ION (three-letter code: SO4) (formula: O₄S).

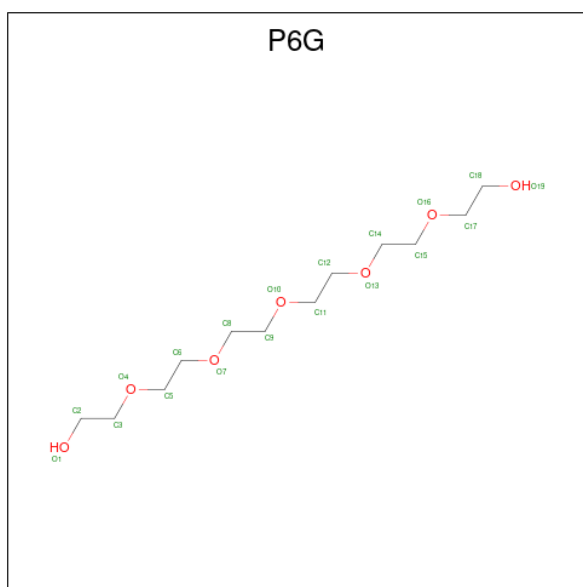


Mol	Chain	Residues	Atoms	ZeroOcc	AltConf
6	A	1	Total O S 5 4 1	0	0
6	A	1	Total O S 5 4 1	0	0

- Molecule 7 is CALCIUM ION (three-letter code: CA) (formula: Ca).

Mol	Chain	Residues	Atoms	ZeroOcc	AltConf
7	B	2	Total Ca 2 2	0	0
7	D	2	Total Ca 2 2	0	0

- Molecule 8 is HEXAETHYLENE GLYCOL (three-letter code: P6G) (formula: C₁₂H₂₆O₇).



Mol	Chain	Residues	Atoms	ZeroOcc	AltConf
8	C	1	Total C O 19 12 7	0	0

- Molecule 9 is water.

Mol	Chain	Residues	Atoms	ZeroOcc	AltConf
9	A	271	Total O 271 271	0	0
9	B	11	Total O 11 11	0	0
9	C	217	Total O 217 217	0	0
9	D	14	Total O 14 14	0	0

4 Data and refinement statistics i

Property	Value	Source
Space group	P 32	Depositor
Cell constants a, b, c, α , β , γ	102.92Å 102.92Å 240.22Å 90.00° 90.00° 120.00°	Depositor
Resolution (Å)	49.80 – 2.55 49.80 – 2.55	Depositor EDS
% Data completeness (in resolution range)	100.0 (49.80-2.55) 93.4 (49.80-2.55)	Depositor EDS
R_{merge}	(Not available)	Depositor
R_{sym}	(Not available)	Depositor
$\langle I/\sigma(I) \rangle$ ¹	0.90 (at 2.54Å)	Xtrriage
Refinement program	PHENIX 1.18.2_3874	Depositor
R, R_{free}	0.181 , 0.219 0.181 , 0.219	Depositor DCC
R_{free} test set	1989 reflections (2.15%)	wwPDB-VP
Wilson B-factor (Å ²)	43.1	Xtrriage
Anisotropy	0.008	Xtrriage
Bulk solvent k_{sol} (e/Å ³), B_{sol} (Å ²)	0.33 , 38.8	EDS
L-test for twinning ²	$\langle L \rangle = 0.48$, $\langle L^2 \rangle = 0.31$	Xtrriage
Estimated twinning fraction	0.014 for -h,-k,l 0.043 for h,-h-k,-l 0.025 for -k,-h,-l	Xtrriage
F_o, F_c correlation	0.95	EDS
Total number of atoms	15587	wwPDB-VP
Average B, all atoms (Å ²)	51.0	wwPDB-VP

Xtrriage's analysis on translational NCS is as follows: *The largest off-origin peak in the Patterson function is 2.63% of the height of the origin peak. No significant pseudotranslation is detected.*

¹Intensities estimated from amplitudes.

²Theoretical values of $\langle |L| \rangle$, $\langle L^2 \rangle$ for acentric reflections are 0.5, 0.333 respectively for untwinned datasets, and 0.375, 0.2 for perfectly twinned datasets.

5 Model quality [i](#)

5.1 Standard geometry [i](#)

Bond lengths and bond angles in the following residue types are not validated in this section: PEG, P6G, EDO, SO4, CA, X8Y

The Z score for a bond length (or angle) is the number of standard deviations the observed value is removed from the expected value. A bond length (or angle) with $|Z| > 5$ is considered an outlier worth inspection. RMSZ is the root-mean-square of all Z scores of the bond lengths (or angles).

Mol	Chain	Bond lengths		Bond angles	
		RMSZ	# Z >5	RMSZ	# Z >5
1	A	0.42	0/7090	0.61	2/9658 (0.0%)
1	C	0.40	0/7112	0.60	0/9690
2	B	0.36	0/595	0.66	0/815
2	D	0.41	0/613	0.61	0/838
All	All	0.41	0/15410	0.61	2/21001 (0.0%)

There are no bond length outliers.

All (2) bond angle outliers are listed below:

Mol	Chain	Res	Type	Atoms	Z	Observed(°)	Ideal(°)
1	A	927	LEU	CA-CB-CG	5.80	128.64	115.30
1	A	772	ASP	CB-CG-OD1	5.55	123.30	118.30

There are no chirality outliers.

There are no planarity outliers.

5.2 Too-close contacts [i](#)

In the following table, the Non-H and H(model) columns list the number of non-hydrogen atoms and hydrogen atoms in the chain respectively. The H(added) column lists the number of hydrogen atoms added and optimized by MolProbity. The Clashes column lists the number of clashes within the asymmetric unit, whereas Symm-Clashes lists symmetry-related clashes.

Mol	Chain	Non-H	H(model)	H(added)	Clashes	Symm-Clashes
1	A	6865	0	6591	64	0
1	C	6892	0	6600	49	0
2	B	585	0	468	4	0
2	D	601	0	490	3	0
3	A	32	0	0	0	0

Continued on next page...

Continued from previous page...

Mol	Chain	Non-H	H(model)	H(added)	Clashes	Symm-Clashes
3	C	32	0	0	1	0
4	A	16	0	23	5	0
4	C	4	0	6	0	0
5	A	7	0	10	1	0
5	C	7	0	10	1	0
6	A	10	0	0	1	0
7	B	2	0	0	0	0
7	D	2	0	0	0	0
8	C	19	0	26	0	0
9	A	271	0	0	14	0
9	B	11	0	0	0	0
9	C	217	0	0	12	0
9	D	14	0	0	1	0
All	All	15587	0	14224	121	0

The all-atom clashscore is defined as the number of clashes found per 1000 atoms (including hydrogen atoms). The all-atom clashscore for this structure is 4.

All (121) close contacts within the same asymmetric unit are listed below, sorted by their clash magnitude.

Atom-1	Atom-2	Interatomic distance (Å)	Clash overlap (Å)
1:C:619:PRO:O	9:C:1201:HOH:O	1.91	0.89
1:A:159:ASP:OD2	9:A:1101:HOH:O	1.93	0.85
1:A:167:LEU:O	9:A:1102:HOH:O	2.00	0.80
1:A:134:ASP:O	9:A:1103:HOH:O	2.01	0.79
1:C:277:HIS:ND1	9:C:1207:HOH:O	2.15	0.78
1:C:180:HIS:O	9:C:1202:HOH:O	2.03	0.76
1:C:104:ASP:OD2	9:C:1203:HOH:O	2.05	0.73
1:A:682:LEU:HD23	1:A:711:LEU:HD11	1.72	0.72
1:A:826:GLN:OE1	9:A:1104:HOH:O	2.08	0.70
2:D:34:SER:N	9:D:701:HOH:O	2.25	0.69
1:C:521:GLU:OE1	9:C:1204:HOH:O	2.11	0.69
1:C:108:PRO:HA	9:C:1212:HOH:O	1.93	0.68
1:C:113:TYR:O	9:C:1205:HOH:O	2.12	0.68
1:A:257:ASP:OD2	9:A:1105:HOH:O	2.13	0.67
1:C:716:GLN:OE1	9:C:1206:HOH:O	2.12	0.66
1:A:426:ARG:NH1	6:A:1008:SO4:O4	2.23	0.66
1:A:515:ARG:HG3	4:A:1004:EDO:H21	1.77	0.65
1:A:523:TRP:CG	4:A:1003:EDO:H22	2.31	0.65
1:A:288:LEU:O	9:A:1106:HOH:O	2.14	0.65
1:A:806:LYS:NZ	9:A:1120:HOH:O	2.34	0.61

Continued on next page...

Continued from previous page...

Atom-1	Atom-2	Interatomic distance (Å)	Clash overlap (Å)
1:C:423:TRP:O	1:C:701:LEU:HA	2.01	0.61
1:A:423:TRP:O	1:A:701:LEU:HA	2.01	0.61
1:A:259:LYS:HD2	9:A:1307:HOH:O	2.01	0.60
1:C:292:VAL:HG12	1:C:294:GLU:H	1.66	0.59
1:A:278:VAL:HG23	1:A:290:LEU:HB2	1.84	0.59
4:A:1002:EDO:H12	1:C:427:ASP:OD2	2.03	0.58
1:C:490:ASP:OD2	9:C:1208:HOH:O	2.17	0.58
1:C:510:LEU:HB3	1:C:539:MET:HG2	1.85	0.58
1:A:478:LEU:CD1	1:A:485:LEU:HD12	2.33	0.57
1:C:678[B]:GLU:H	1:C:678[B]:GLU:CD	2.07	0.57
1:C:776:ILE:HG23	1:C:824:VAL:HG22	1.88	0.55
1:C:847:ASP:HB3	1:C:908:PRO:HG2	1.88	0.55
1:A:458:LYS:HG2	1:A:525:TRP:HB3	1.88	0.55
1:C:338:LEU:O	9:C:1209:HOH:O	2.18	0.55
1:C:447:VAL:HG11	1:C:486:VAL:HG23	1.89	0.54
3:C:1102:X8Y:C16	5:C:1103:PEG:H32	2.38	0.53
1:A:459:ARG:NH1	1:A:494:LYS:HE2	2.23	0.53
1:C:336:PHE:HB3	1:C:387:PHE:HB2	1.91	0.53
1:A:932:SER:OG	9:A:1107:HOH:O	2.19	0.53
1:A:80:HIS:CE1	1:A:82:VAL:HB	2.45	0.52
1:A:478:LEU:HD12	1:A:485:LEU:HD12	1.92	0.52
1:C:863:GLN:OE1	1:C:886:ARG:NH1	2.43	0.52
1:C:370:THR:N	1:C:371:PRO:HD2	2.25	0.52
1:A:171:ASN:HA	1:A:269:ASP:OD1	2.11	0.51
1:A:515:ARG:HG3	4:A:1004:EDO:C2	2.39	0.51
1:C:951:ARG:HG3	2:D:55:TYR:CE2	2.46	0.50
1:A:951:ARG:HG3	2:B:55:TYR:CE2	2.46	0.50
1:C:458:LYS:HG2	1:C:525:TRP:HB3	1.94	0.49
1:A:33:VAL:HG12	1:A:310:GLU:HG3	1.94	0.49
1:A:421:SER:HB2	1:A:449:TRP:HB2	1.94	0.49
1:C:318:TYR:CE2	1:C:639:GLY:HA3	2.48	0.48
1:A:292:VAL:HG12	1:A:294:GLU:H	1.77	0.48
1:C:120:VAL:HG22	1:C:404:LEU:O	2.13	0.48
2:D:61:GLY:HA2	2:D:70:CYS:SG	2.54	0.48
1:A:491:PRO:O	1:A:532:PRO:HD2	2.14	0.48
1:A:767:GLN:HG2	1:A:777:HIS:HB2	1.96	0.47
1:A:62:ALA:HB3	1:A:153:ALA:HA	1.97	0.47
1:A:847:ASP:HB3	1:A:908:PRO:HG2	1.95	0.47
1:C:285:ALA:O	1:C:312:ASN:N	2.46	0.47
1:A:447:VAL:HG11	1:A:486:VAL:HG23	1.97	0.47
1:C:244:GLU:HB3	1:C:245:PRO:HD3	1.95	0.47

Continued on next page...

Continued from previous page...

Atom-1	Atom-2	Interatomic distance (Å)	Clash overlap (Å)
1:C:171:ASN:HA	1:C:269:ASP:OD1	2.15	0.46
1:A:112:ARG:NH2	1:A:179:GLU:O	2.48	0.46
1:A:648:LEU:HD13	1:A:685:TRP:CG	2.51	0.46
1:C:41:CYS:SG	1:C:51:ARG:HD2	2.56	0.46
1:C:102:ARG:HA	1:C:384:ILE:O	2.16	0.45
1:C:273:PRO:HA	1:C:372:GLN:HB2	1.99	0.45
1:A:331:ARG:HG2	1:A:332:ASP:H	1.81	0.45
1:A:884:LEU:HG	1:A:899:ALA:HB3	1.98	0.45
1:C:491:PRO:O	1:C:532:PRO:HD2	2.16	0.45
1:C:678[B]:GLU:OE1	1:C:678[B]:GLU:N	2.40	0.45
1:A:318:TYR:CE2	1:A:639:GLY:HA3	2.51	0.45
1:A:336:PHE:HB3	1:A:387:PHE:HB2	1.99	0.45
1:A:78:LEU:HB2	1:A:87:LEU:HB2	1.99	0.44
1:C:72:ASP:O	1:C:92:GLN:HG2	2.18	0.44
1:C:112:ARG:NH2	1:C:179:GLU:O	2.50	0.44
1:C:432:LEU:HD22	1:C:477[A]:HIS:ND1	2.33	0.44
1:A:89:LEU:HD22	1:A:156:PHE:CZ	2.53	0.44
1:A:494:LYS:HB2	1:A:526:PRO:HB2	1.99	0.44
1:A:432:LEU:HD22	1:A:477[A]:HIS:ND1	2.33	0.44
1:A:567:GLU:N	1:A:568:PRO:HA	2.34	0.43
1:A:603:MET:HG3	1:A:633:PHE:CE1	2.53	0.43
1:C:436:GLN:NE2	1:C:440:ASP:OD1	2.39	0.43
1:C:494:LYS:NZ	9:C:1232:HOH:O	2.51	0.43
5:A:1005:PEG:H12	5:A:1005:PEG:H31	1.79	0.43
1:C:63:LEU:O	1:C:66:THR:OG1	2.34	0.43
1:C:414:PHE:CD1	1:C:484:LYS:HG3	2.54	0.43
1:A:742:LYS:HA	1:A:742:LYS:HD2	1.90	0.43
1:A:829:GLY:HA2	1:A:862:ALA:HA	2.01	0.43
1:A:424:ASN:OD1	1:A:451:ASP:HB3	2.18	0.43
1:A:80:HIS:HE1	1:A:82:VAL:HB	1.82	0.43
1:A:158:LEU:HB2	1:A:170:VAL:HB	2.00	0.43
1:A:419:HIS:HB3	1:A:449:TRP:NE1	2.34	0.42
1:C:62:ALA:HB3	1:C:153:ALA:HA	2.00	0.42
1:C:61:ARG:HG2	1:C:79:ILE:HG22	2.01	0.42
4:A:1006:EDO:O1	9:A:1109:HOH:O	2.22	0.42
2:B:61:GLY:HA2	2:B:70:CYS:SG	2.60	0.42
1:A:312:ASN:OD1	9:A:1108:HOH:O	2.21	0.42
1:A:516:ASP:OD1	1:A:518:SER:OG	2.38	0.42
1:A:881:GLU:HA	1:A:904:HIS:O	2.18	0.42
1:C:870:ASP:OD2	1:C:873:THR:OG1	2.22	0.42
1:A:485:LEU:HD23	1:A:486:VAL:N	2.35	0.41

Continued on next page...

Continued from previous page...

Atom-1	Atom-2	Interatomic distance (Å)	Clash overlap (Å)
2:B:117:ARG:H	2:B:117:ARG:HG3	1.50	0.41
1:A:50:GLN:OE1	9:A:1110:HOH:O	2.22	0.41
1:A:105:GLU:HB2	1:A:108:PRO:HB3	2.02	0.41
1:A:656:LEU:HA	1:A:656:LEU:HD23	1.80	0.41
1:C:773:ALA:HA	1:C:830:THR:HG21	2.03	0.41
1:A:534:PHE:HB3	1:A:600:TYR:HB3	2.02	0.41
1:A:755:TYR:CE2	1:A:792:PRO:HG2	2.55	0.41
1:C:444:PRO:HG2	1:C:723:LEU:HB3	2.03	0.41
1:C:488:ILE:HD12	1:C:562:TRP:CE3	2.55	0.41
1:A:281:ILE:HA	1:A:321:VAL:O	2.21	0.41
1:A:913:ARG:NH2	9:A:1141:HOH:O	2.49	0.41
1:C:423:TRP:CD2	1:C:701:LEU:HB2	2.56	0.41
1:A:444:PRO:HG2	1:A:723:LEU:HB3	2.03	0.40
1:C:619:PRO:HD2	9:C:1358:HOH:O	2.21	0.40
1:C:159:ASP:OD1	1:C:169:SER:HB3	2.21	0.40
1:A:486:VAL:HA	1:A:560:TYR:O	2.22	0.40
1:A:172:ALA:N	9:A:1113:HOH:O	2.27	0.40
1:A:879:ARG:NH1	1:A:881:GLU:OE1	2.48	0.40
2:B:40:LEU:HD22	2:B:62:SER:CB	2.51	0.40

There are no symmetry-related clashes.

5.3 Torsion angles [i](#)

5.3.1 Protein backbone [i](#)

In the following table, the Percentiles column shows the percent Ramachandran outliers of the chain as a percentile score with respect to all X-ray entries followed by that with respect to entries of similar resolution.

The Analysed column shows the number of residues for which the backbone conformation was analysed, and the total number of residues.

Mol	Chain	Analysed	Favoured	Allowed	Outliers	Percentiles	
1	A	853/955 (89%)	826 (97%)	26 (3%)	1 (0%)	51	65
1	C	855/955 (90%)	824 (96%)	30 (4%)	1 (0%)	51	65
2	B	82/554 (15%)	78 (95%)	4 (5%)	0	100	100
2	D	82/554 (15%)	77 (94%)	5 (6%)	0	100	100
All	All	1872/3018 (62%)	1805 (96%)	65 (4%)	2 (0%)	51	65

All (2) Ramachandran outliers are listed below:

Mol	Chain	Res	Type
1	A	576	VAL
1	C	576	VAL

5.3.2 Protein sidechains [i](#)

In the following table, the Percentiles column shows the percent sidechain outliers of the chain as a percentile score with respect to all X-ray entries followed by that with respect to entries of similar resolution.

The Analysed column shows the number of residues for which the sidechain conformation was analysed, and the total number of residues.

Mol	Chain	Analysed	Rotameric	Outliers	Percentiles	
1	A	740/826 (90%)	717 (97%)	23 (3%)	40	54
1	C	743/826 (90%)	721 (97%)	22 (3%)	41	55
2	B	64/485 (13%)	61 (95%)	3 (5%)	26	35
2	D	67/485 (14%)	63 (94%)	4 (6%)	19	25
All	All	1614/2622 (62%)	1562 (97%)	52 (3%)	39	53

All (52) residues with a non-rotameric sidechain are listed below:

Mol	Chain	Res	Type
1	A	67	LEU
1	A	133	ARG
1	A	135	ASP
1	A	137	SER
1	A	163	ASP
1	A	259	LYS
1	A	370	THR
1	A	424	ASN
1	A	446	ASP
1	A	458	LYS
1	A	500	ARG
1	A	524	CYS
1	A	552	TYR
1	A	637	TRP
1	A	665	PHE
1	A	706	ARG
1	A	714	GLN
1	A	788	GLN

Continued on next page...

Continued from previous page...

Mol	Chain	Res	Type
1	A	863	GLN
1	A	886	ARG
1	A	888	SER
1	A	927	LEU
1	A	940	GLN
2	B	40	LEU
2	B	78	THR
2	B	117	ARG
1	C	42	ASP
1	C	79	ILE
1	C	110	ARG
1	C	129	SER
1	C	137	SER
1	C	163	ASP
1	C	169	SER
1	C	259	LYS
1	C	370	THR
1	C	424	ASN
1	C	446	ASP
1	C	458	LYS
1	C	524	CYS
1	C	539	MET
1	C	552	TYR
1	C	637	TRP
1	C	665	PHE
1	C	706	ARG
1	C	776	ILE
1	C	795	GLU
1	C	797	VAL
1	C	808	HIS
2	D	38	THR
2	D	48	PHE
2	D	78	THR
2	D	83	LYS

Sometimes sidechains can be flipped to improve hydrogen bonding and reduce clashes. There are no such sidechains identified.

5.3.3 RNA

There are no RNA molecules in this entry.

5.4 Non-standard residues in protein, DNA, RNA chains [i](#)

There are no non-standard protein/DNA/RNA residues in this entry.

5.5 Carbohydrates [i](#)

There are no monosaccharides in this entry.

5.6 Ligand geometry [i](#)

Of 16 ligands modelled in this entry, 4 are monoatomic - leaving 12 for Mogul analysis.

In the following table, the Counts columns list the number of bonds (or angles) for which Mogul statistics could be retrieved, the number of bonds (or angles) that are observed in the model and the number of bonds (or angles) that are defined in the Chemical Component Dictionary. The Link column lists molecule types, if any, to which the group is linked. The Z score for a bond length (or angle) is the number of standard deviations the observed value is removed from the expected value. A bond length (or angle) with $|Z| > 2$ is considered an outlier worth inspection. RMSZ is the root-mean-square of all Z scores of the bond lengths (or angles).

Mol	Type	Chain	Res	Link	Bond lengths			Bond angles		
					Counts	RMSZ	# Z > 2	Counts	RMSZ	# Z > 2
3	X8Y	A	1001	-	31,33,33	2.91	6 (19%)	37,45,45	1.58	4 (10%)
8	P6G	C	1101	-	18,18,18	0.54	0	17,17,17	0.26	0
3	X8Y	C	1102	-	31,33,33	2.73	6 (19%)	37,45,45	1.35	5 (13%)
4	EDO	A	1006	-	3,3,3	0.83	0	2,2,2	0.55	0
6	SO4	A	1007	-	4,4,4	0.25	0	6,6,6	0.32	0
6	SO4	A	1008	-	4,4,4	0.19	0	6,6,6	0.31	0
5	PEG	A	1005	-	6,6,6	0.48	0	5,5,5	0.51	0
4	EDO	A	1002	-	3,3,3	0.67	0	2,2,2	0.42	0
4	EDO	A	1004	-	3,3,3	0.57	0	2,2,2	0.55	0
4	EDO	A	1003	-	3,3,3	0.68	0	2,2,2	0.35	0
5	PEG	C	1103	-	6,6,6	0.49	0	5,5,5	0.32	0
4	EDO	C	1104	-	3,3,3	0.49	0	2,2,2	0.21	0

In the following table, the Chirals column lists the number of chiral outliers, the number of chiral centers analysed, the number of these observed in the model and the number defined in the Chemical Component Dictionary. Similar counts are reported in the Torsion and Rings columns. '-' means no outliers of that kind were identified.

Mol	Type	Chain	Res	Link	Chirals	Torsions	Rings
3	X8Y	A	1001	-	-	14/19/44/44	0/2/2/2
8	P6G	C	1101	-	-	7/16/16/16	-

Continued on next page...

Continued from previous page...

Mol	Type	Chain	Res	Link	Chirals	Torsions	Rings
3	X8Y	C	1102	-	-	10/19/44/44	0/2/2/2
4	EDO	A	1006	-	-	0/1/1/1	-
5	PEG	A	1005	-	-	2/4/4/4	-
4	EDO	A	1002	-	-	1/1/1/1	-
4	EDO	A	1004	-	-	0/1/1/1	-
4	EDO	A	1003	-	-	1/1/1/1	-
5	PEG	C	1103	-	-	2/4/4/4	-
4	EDO	C	1104	-	-	1/1/1/1	-

All (12) bond length outliers are listed below:

Mol	Chain	Res	Type	Atoms	Z	Observed(Å)	Ideal(Å)
3	A	1001	X8Y	O4-N3	11.68	1.42	1.22
3	C	1102	X8Y	O4-N3	11.18	1.41	1.22
3	A	1001	X8Y	N5-N4	7.87	1.46	1.24
3	C	1102	X8Y	N5-N4	7.12	1.44	1.24
3	A	1001	X8Y	C12-N2	4.27	1.49	1.37
3	C	1102	X8Y	C12-N2	3.93	1.48	1.37
3	C	1102	X8Y	O3-C2	-2.43	1.40	1.44
3	A	1001	X8Y	C16-C17	2.42	1.43	1.38
3	A	1001	X8Y	C11-N2	2.12	1.50	1.45
3	C	1102	X8Y	C13-N3	2.07	1.49	1.45
3	C	1102	X8Y	O7-C19	-2.05	1.38	1.43
3	A	1001	X8Y	O3-C2	-2.01	1.41	1.44

All (9) bond angle outliers are listed below:

Mol	Chain	Res	Type	Atoms	Z	Observed(°)	Ideal(°)
3	A	1001	X8Y	C6-N1-C5	-6.53	104.97	114.20
3	A	1001	X8Y	C11-N2-C12	-3.09	115.96	123.39
3	C	1102	X8Y	C18-C5-N1	-3.05	104.10	109.66
3	C	1102	X8Y	C17-C12-N2	-3.02	116.66	121.80
3	C	1102	X8Y	C11-N2-C12	-2.93	116.33	123.39
3	A	1001	X8Y	C13-C12-N2	-2.78	118.44	123.33
3	C	1102	X8Y	C14-C13-C12	-2.70	119.08	121.53
3	A	1001	X8Y	C4-C5-N1	-2.63	106.27	112.11
3	C	1102	X8Y	O1-C1-C19	-2.09	105.40	110.03

There are no chirality outliers.

All (38) torsion outliers are listed below:

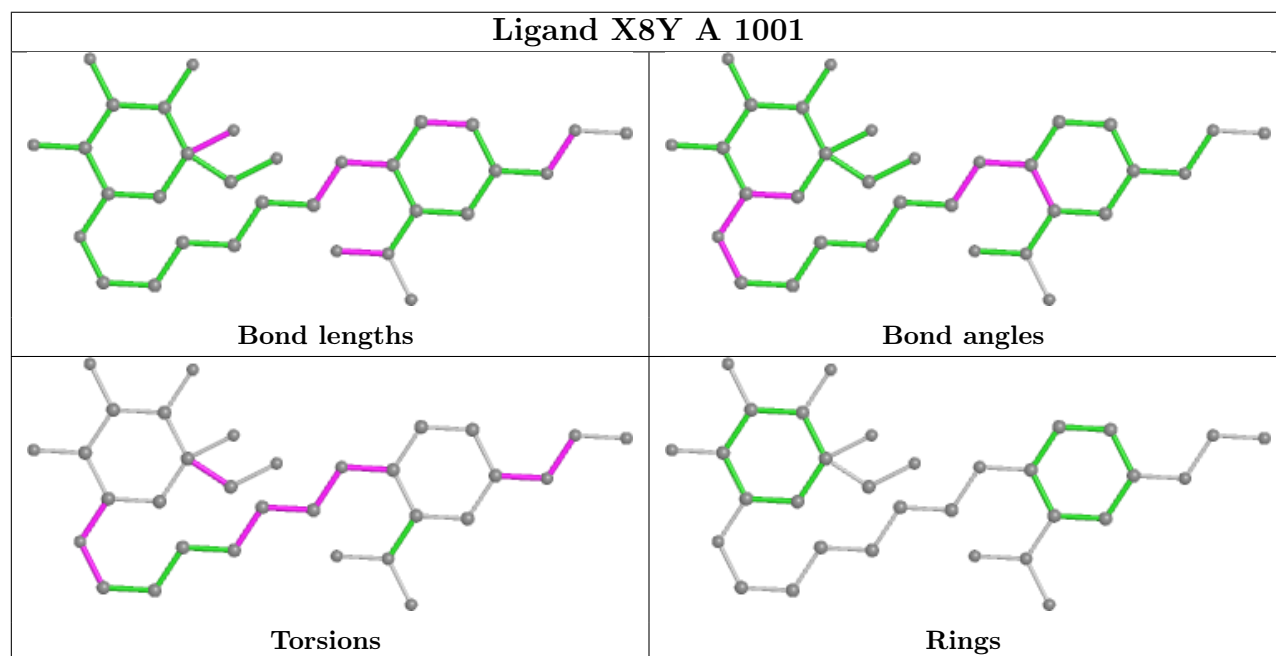
Mol	Chain	Res	Type	Atoms
3	A	1001	X8Y	C18-C5-N1-C6
3	A	1001	X8Y	C14-C15-N4-N5
3	A	1001	X8Y	C16-C15-N4-N5
3	A	1001	X8Y	C13-C12-N2-C11
3	A	1001	X8Y	C1-C2-C3-O2
3	A	1001	X8Y	O3-C2-C3-O2
3	C	1102	X8Y	C18-C5-N1-C6
3	C	1102	X8Y	C14-C15-N4-N5
3	C	1102	X8Y	C16-C15-N4-N5
3	C	1102	X8Y	C1-C2-C3-O2
3	C	1102	X8Y	O3-C2-C3-O2
3	A	1001	X8Y	C9-C10-C11-N2
3	C	1102	X8Y	C9-C10-C11-N2
3	A	1001	X8Y	C17-C12-N2-C11
3	C	1102	X8Y	N1-C6-C7-C8
5	A	1005	PEG	C1-C2-O2-C3
3	A	1001	X8Y	C4-C5-N1-C6
3	C	1102	X8Y	C4-C5-N1-C6
8	C	1101	P6G	O13-C14-C15-O16
5	C	1103	PEG	O1-C1-C2-O2
3	A	1001	X8Y	C15-N4-N5-N6
3	A	1001	X8Y	C7-C6-N1-C5
3	A	1001	X8Y	C11-C10-C9-C8
8	C	1101	P6G	O16-C17-C18-O19
3	C	1102	X8Y	C11-C10-C9-C8
5	C	1103	PEG	C4-C3-O2-C2
8	C	1101	P6G	C15-C14-O13-C12
5	A	1005	PEG	C4-C3-O2-C2
8	C	1101	P6G	C12-C11-O10-C9
3	A	1001	X8Y	C4-C2-C3-O2
3	C	1102	X8Y	C4-C2-C3-O2
4	A	1003	EDO	O1-C1-C2-O2
8	C	1101	P6G	C6-C5-O4-C3
3	A	1001	X8Y	C10-C11-N2-C12
4	C	1104	EDO	O1-C1-C2-O2
8	C	1101	P6G	C14-C15-O16-C17
4	A	1002	EDO	O1-C1-C2-O2
8	C	1101	P6G	C8-C9-O10-C11

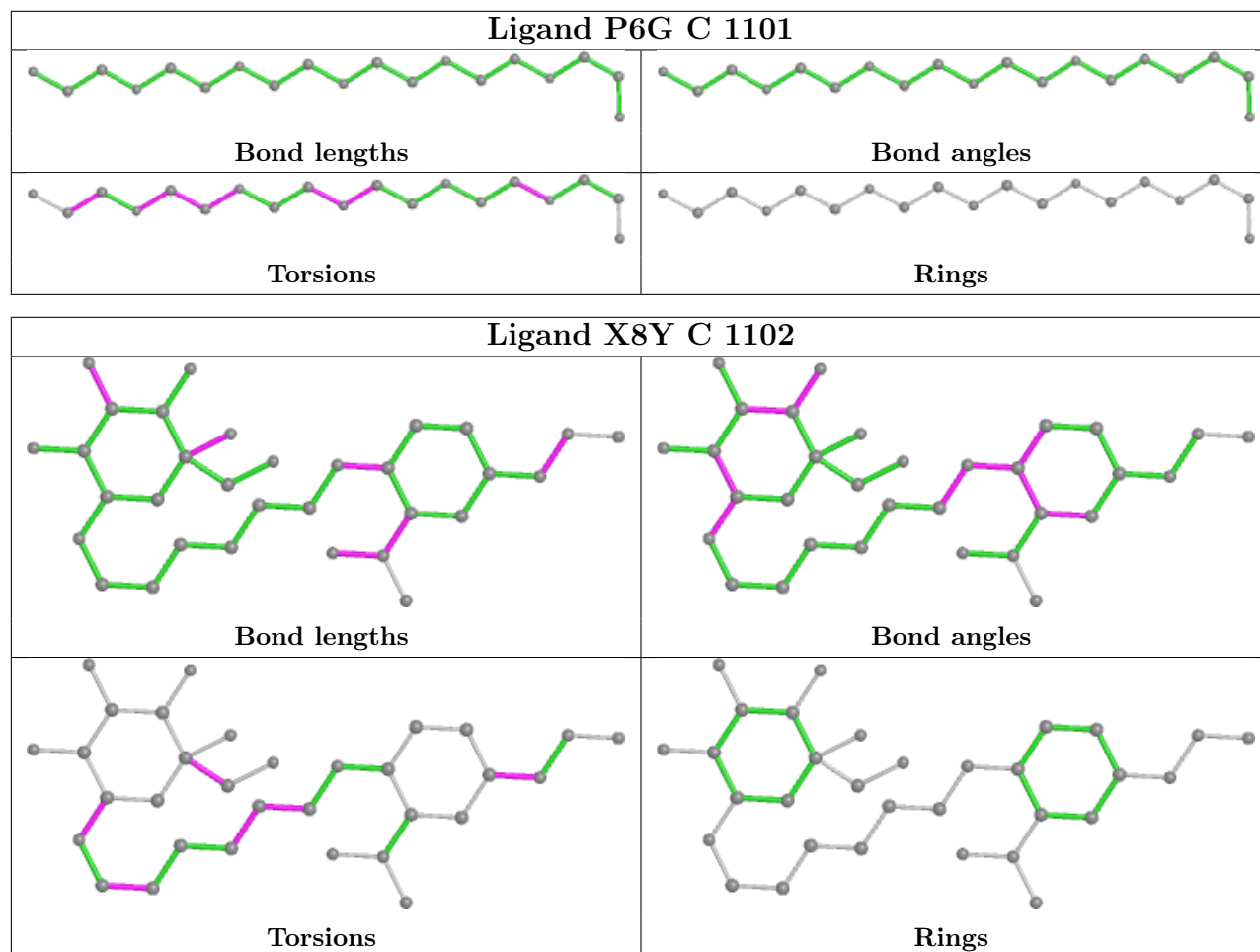
There are no ring outliers.

8 monomers are involved in 8 short contacts:

Mol	Chain	Res	Type	Clashes	Symm-Clashes
3	C	1102	X8Y	1	0
4	A	1006	EDO	1	0
6	A	1008	SO4	1	0
5	A	1005	PEG	1	0
4	A	1002	EDO	1	0
4	A	1004	EDO	2	0
4	A	1003	EDO	1	0
5	C	1103	PEG	1	0

The following is a two-dimensional graphical depiction of Mogul quality analysis of bond lengths, bond angles, torsion angles, and ring geometry for all instances of the Ligand of Interest. In addition, ligands with molecular weight > 250 and outliers as shown on the validation Tables will also be included. For torsion angles, if less than 5% of the Mogul distribution of torsion angles is within 10 degrees of the torsion angle in question, then that torsion angle is considered an outlier. Any bond that is central to one or more torsion angles identified as an outlier by Mogul will be highlighted in the graph. For rings, the root-mean-square deviation (RMSD) between the ring in question and similar rings identified by Mogul is calculated over all ring torsion angles. If the average RMSD is greater than 60 degrees and the minimal RMSD between the ring in question and any Mogul-identified rings is also greater than 60 degrees, then that ring is considered an outlier. The outliers are highlighted in purple. The color gray indicates Mogul did not find sufficient equivalents in the CSD to analyse the geometry.





5.7 Other polymers [i](#)

There are no such residues in this entry.

5.8 Polymer linkage issues [i](#)

There are no chain breaks in this entry.

6 Fit of model and data

6.1 Protein, DNA and RNA chains

In the following table, the column labelled ‘#RSRZ > 2’ contains the number (and percentage) of RSRZ outliers, followed by percent RSRZ outliers for the chain as percentile scores relative to all X-ray entries and entries of similar resolution. The OWAB column contains the minimum, median, 95th percentile and maximum values of the occupancy-weighted average B-factor per residue. The column labelled ‘Q < 0.9’ lists the number of (and percentage) of residues with an average occupancy less than 0.9.

Mol	Chain	Analysed	<RSRZ>	#RSRZ>2	OWAB(Å ²)	Q<0.9
1	A	854/955 (89%)	-0.24	11 (1%) 77 82	33, 45, 67, 104	0
1	C	857/955 (89%)	-0.02	30 (3%) 44 51	34, 50, 88, 103	0
2	B	84/554 (15%)	0.47	13 (15%) 2 2	42, 60, 91, 96	0
2	D	84/554 (15%)	0.64	14 (16%) 1 1	43, 59, 91, 96	0
All	All	1879/3018 (62%)	-0.07	68 (3%) 42 49	33, 48, 84, 104	0

All (68) RSRZ outliers are listed below:

Mol	Chain	Res	Type	RSRZ
1	A	184	PRO	7.1
2	D	43	THR	7.0
2	D	81	GLY	5.3
2	D	82	TYR	5.0
2	B	43	THR	4.8
2	D	44	ALA	4.4
1	A	247	ALA	4.2
2	D	85	LEU	3.9
1	C	76	VAL	3.8
1	C	67	LEU	3.4
1	C	136	ASN	3.4
2	D	48	PHE	3.3
1	C	148	LYS	3.3
2	D	80	THR	3.2
2	D	37	PHE	3.2
1	A	248	TRP	3.2
1	A	33	VAL	3.2
1	C	185	ARG	3.1
2	B	38	THR	3.1
2	D	36	PRO	3.0
2	B	86	TYR	3.0

Continued on next page...

Continued from previous page...

Mol	Chain	Res	Type	RSRZ
1	C	128	LEU	3.0
1	C	64	LEU	2.9
1	A	110	ARG	2.9
1	C	138	VAL	2.8
1	C	63	LEU	2.8
2	D	78	THR	2.8
1	C	143	ALA	2.8
1	C	184	PRO	2.7
2	D	84	PRO	2.7
1	C	370	THR	2.6
2	B	117	ARG	2.5
1	C	785	HIS	2.5
1	C	73	ALA	2.5
1	C	247	ALA	2.5
2	B	84	PRO	2.5
2	D	86	TYR	2.5
1	C	153	ALA	2.5
1	A	183	ALA	2.5
2	B	82	TYR	2.5
2	B	41	ASP	2.5
1	A	246	GLY	2.5
1	A	251	THR	2.4
2	B	80	THR	2.4
1	C	144	GLU	2.4
1	C	142	VAL	2.4
1	C	625	ALA	2.4
1	C	714	GLN	2.4
1	C	132	GLY	2.3
1	C	163	ASP	2.3
1	A	256	SER	2.3
1	C	137	SER	2.2
2	B	111	VAL	2.2
1	C	165	SER	2.2
1	A	254	THR	2.2
2	B	114	ASN	2.2
2	D	38	THR	2.2
1	C	131	SER	2.2
2	B	34	SER	2.2
1	C	79	ILE	2.1
2	B	37	PHE	2.1
2	B	44	ALA	2.1
1	C	126	ALA	2.1

Continued on next page...

Continued from previous page...

Mol	Chain	Res	Type	RSRZ
1	C	140	LEU	2.1
2	D	83	LYS	2.1
1	C	156	PHE	2.0
1	A	515	ARG	2.0
1	C	61	ARG	2.0

6.2 Non-standard residues in protein, DNA, RNA chains [i](#)

There are no non-standard protein/DNA/RNA residues in this entry.

6.3 Carbohydrates [i](#)

There are no monosaccharides in this entry.

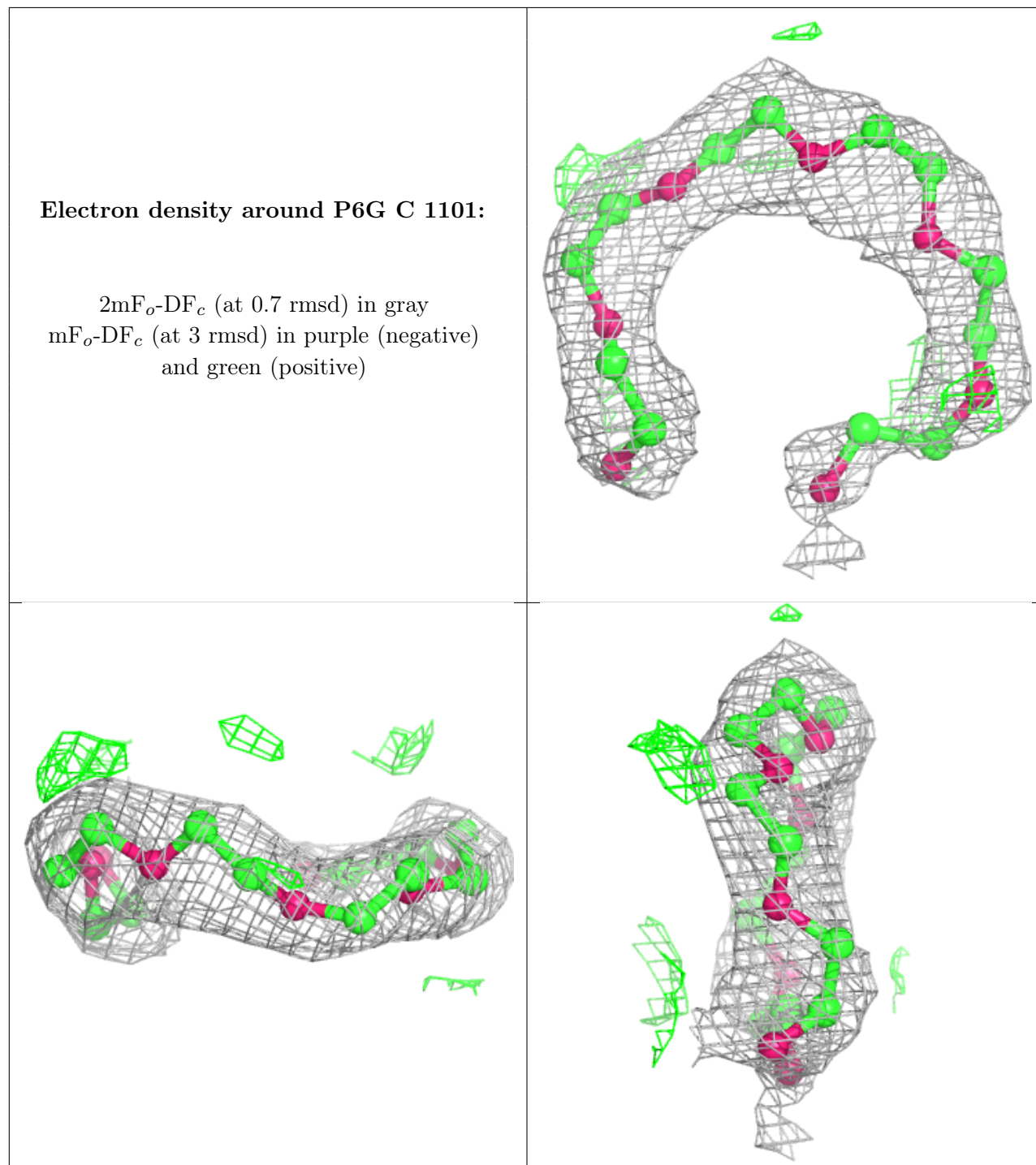
6.4 Ligands [i](#)

In the following table, the Atoms column lists the number of modelled atoms in the group and the number defined in the chemical component dictionary. The B-factors column lists the minimum, median, 95th percentile and maximum values of B factors of atoms in the group. The column labelled 'Q< 0.9' lists the number of atoms with occupancy less than 0.9.

Mol	Type	Chain	Res	Atoms	RSCC	RSR	B-factors(\AA^2)	Q<0.9
4	EDO	A	1003	4/4	0.81	0.24	63,64,68,72	0
4	EDO	A	1006	4/4	0.84	0.45	57,62,69,70	0
5	PEG	C	1103	7/7	0.84	0.17	61,70,73,74	0
4	EDO	C	1104	4/4	0.87	0.29	62,63,64,65	0
8	P6G	C	1101	19/19	0.87	0.18	63,72,76,76	0
3	X8Y	C	1102	32/32	0.90	0.20	37,49,71,74	0
5	PEG	A	1005	7/7	0.90	0.25	62,65,74,74	0
6	SO4	A	1007	5/5	0.92	0.17	64,64,67,91	0
3	X8Y	A	1001	32/32	0.93	0.20	36,44,65,68	0
4	EDO	A	1004	4/4	0.93	0.40	62,65,66,70	0
6	SO4	A	1008	5/5	0.96	0.19	66,68,73,83	0
4	EDO	A	1002	4/4	0.97	0.11	44,45,48,53	0
7	CA	D	601	1/1	0.98	0.07	55,55,55,55	0
7	CA	B	601	1/1	0.99	0.07	58,58,58,58	0
7	CA	D	602	1/1	0.99	0.08	46,46,46,46	0
7	CA	B	602	1/1	0.99	0.05	43,43,43,43	0

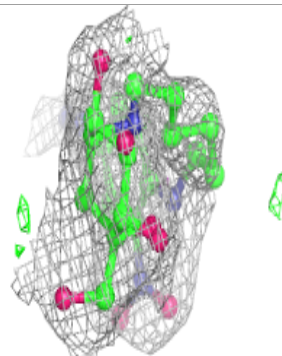
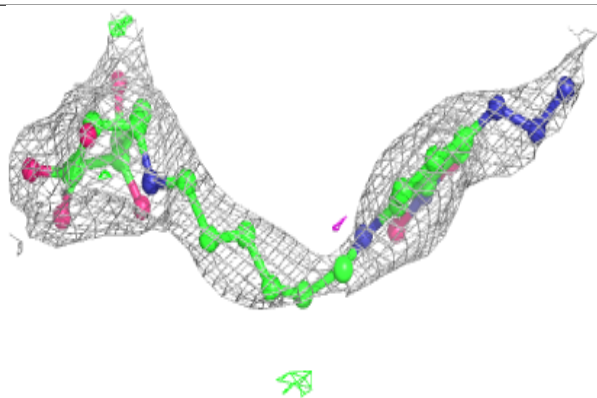
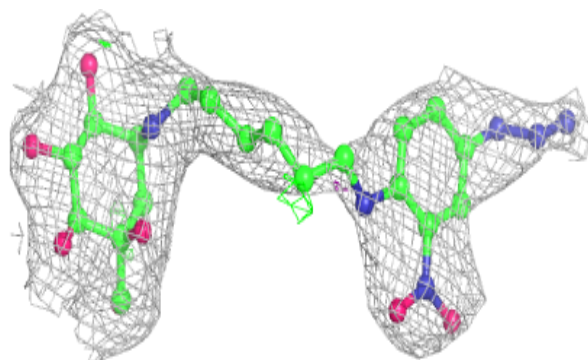
The following is a graphical depiction of the model fit to experimental electron density of all

instances of the Ligand of Interest. In addition, ligands with molecular weight > 250 and outliers as shown on the geometry validation Tables will also be included. Each fit is shown from different orientation to approximate a three-dimensional view.

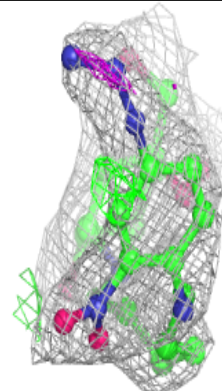
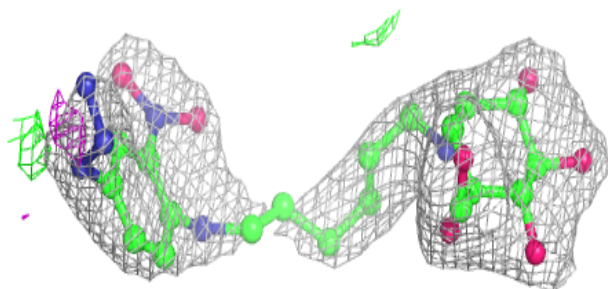
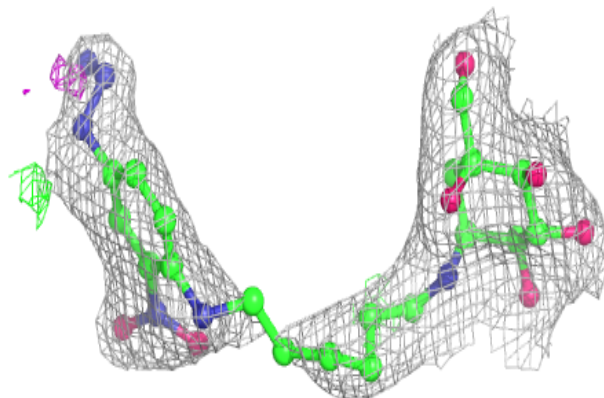


Electron density around X8Y C 1102:

$2mF_o-DF_c$ (at 0.7 rmsd) in gray
 mF_o-DF_c (at 3 rmsd) in purple (negative)
and green (positive)

**Electron density around X8Y A 1001:**

$2mF_o-DF_c$ (at 0.7 rmsd) in gray
 mF_o-DF_c (at 3 rmsd) in purple (negative)
and green (positive)



6.5 Other polymers [i](#)

There are no such residues in this entry.