



Full wwPDB EM Map/Model Validation Report ⓘ

May 17, 2020 – 09:58 am BST

PDB ID : 6KUP
EMDB ID : EMD-9579
Title : Structure of influenza D virus polymerase bound to vRNA promoter in Mode A conformation(Class A2)
Authors : Peng, Q.; Peng, R.; Qi, J.; Gao, G.F.; Shi, Y.
Deposited on : 2019-09-02
Resolution : 4.30 Å(reported)

This is a Full wwPDB EM Map/Model Validation Report for a publicly released PDB entry.

We welcome your comments at validation@mail.wwpdb.org

A user guide is available at

<https://www.wwpdb.org/validation/2017/EMValidationReportHelp>

with specific help available everywhere you see the ⓘ symbol.

The following versions of software and data (see [references ⓘ](#)) were used in the production of this report:

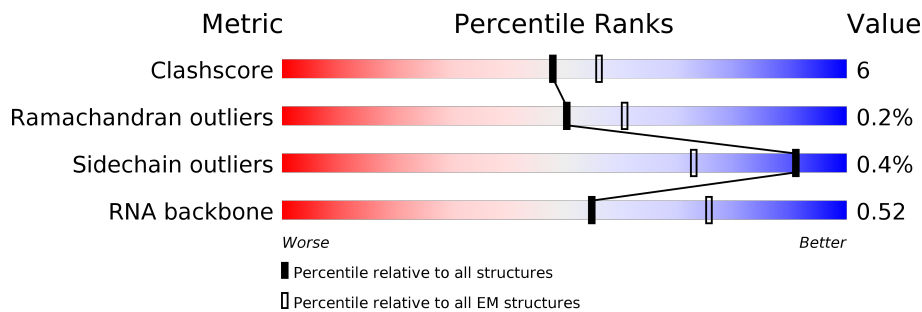
EMDB validation analysis : 0.0.0.dev33
MolProbity : 4.02b-467
Percentile statistics : 20191225.v01 (using entries in the PDB archive December 25th 2019)
Ideal geometry (proteins) : Engh & Huber (2001)
Ideal geometry (DNA, RNA) : Parkinson et al. (1996)
Validation Pipeline (wwPDB-VP) : 2.11

1 Overall quality at a glance i

The following experimental techniques were used to determine the structure:
ELECTRON MICROSCOPY

The reported resolution of this entry is 4.30 Å.

Percentile scores (ranging between 0-100) for global validation metrics of the entry are shown in the following graphic. The table shows the number of entries on which the scores are based.



Metric	Whole archive (#Entries)	EM structures (#Entries)
Clashscore	158937	4297
Ramachandran outliers	154571	4023
Sidechain outliers	154315	3826
RNA backbone	4643	859

The table below summarises the geometric issues observed across the polymeric chains and their fit to the map. The red, orange, yellow and green segments on the bar indicate the fraction of residues that contain outliers for ≥ 3 , 2, 1 and 0 types of geometric quality criteria respectively. A grey segment represents the fraction of residues that are not modelled. The numeric value for each fraction is indicated below the corresponding segment, with a dot representing fractions $\leq 5\%$. The upper red bar (where present) indicates the fraction of residues that have poor fit to the EM map (all atom inclusion $< 40\%$). The numeric value is given above the bar.

Mol	Chain	Length	Quality of chain
1	A	710	 62% 10% 28%
2	B	753	 78% 15% 7%
3	C	772	 27% 5% 68%
4	R	14	 36% 14% 7% 43%
5	V	15	 73% 13% 13%

2 Entry composition

There are 5 unique types of molecules in this entry. The entry contains 12254 atoms, of which 0 are hydrogens and 0 are deuteriums.

In the tables below, the AltConf column contains the number of residues with at least one atom in alternate conformation and the Trace column contains the number of residues modelled with at most 2 atoms.

- Molecule 1 is a protein called Polymerase 3.

Mol	Chain	Residues	Atoms					AltConf	Trace
			Total	C	N	O	S		
1	A	511	Total	C	N	O	S	0	0
			4176	2657	712	771	36		

- Molecule 2 is a protein called RNA-directed RNA polymerase catalytic subunit.

Mol	Chain	Residues	Atoms					AltConf	Trace
			Total	C	N	O	S		
2	B	701	Total	C	N	O	S	0	0
			5578	3523	949	1045	61		

- Molecule 3 is a protein called Polymerase PB2.

Mol	Chain	Residues	Atoms					AltConf	Trace
			Total	C	N	O	S		
3	C	249	Total	C	N	O	S	0	0
			2006	1303	340	351	12		

- Molecule 4 is a RNA chain called 3'-vRNA.

Mol	Chain	Residues	Atoms					AltConf	Trace
			Total	C	N	O	P		
4	R	8	Total	C	N	O	P	0	0
			163	73	23	59	8		

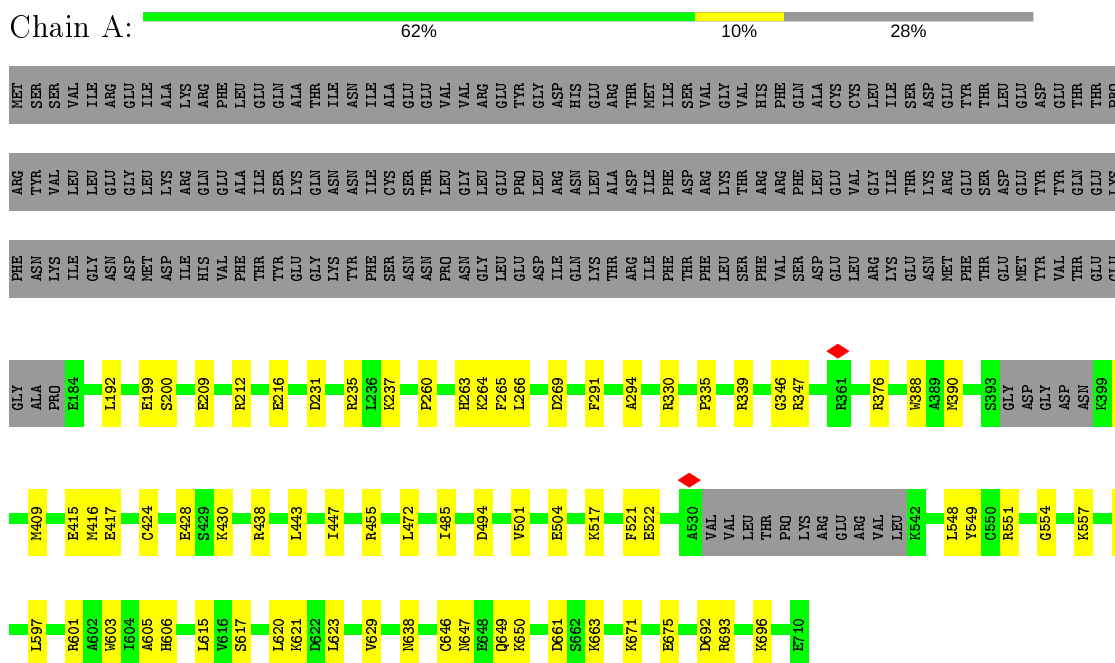
- Molecule 5 is a RNA chain called 5'-vRNA.

Mol	Chain	Residues	Atoms					AltConf	Trace
			Total	C	N	O	P		
5	V	15	Total	C	N	O	P	0	0
			331	147	68	101	15		

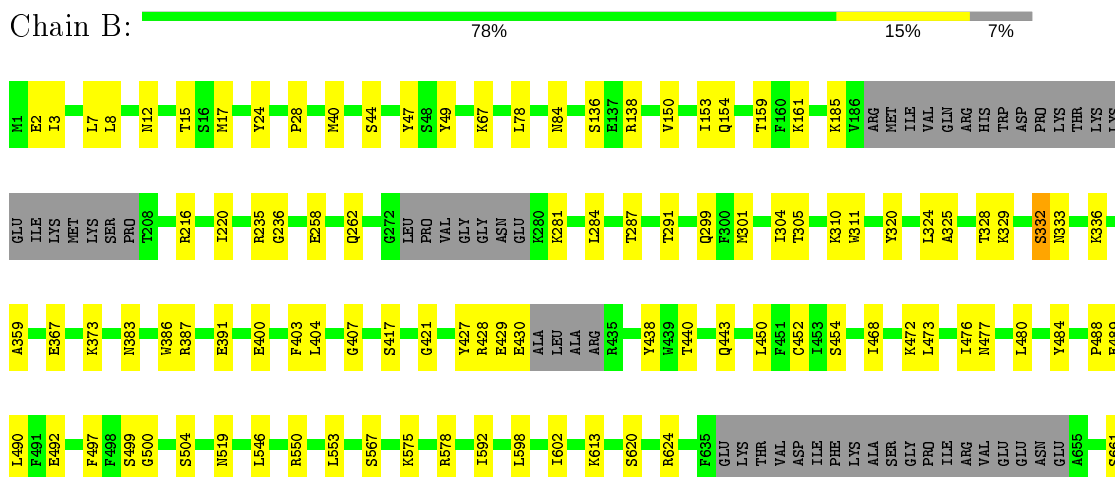
3 Residue-property plots

These plots are drawn for all protein, RNA and DNA chains in the entry. The first graphic for a chain summarises the proportions of the various outlier classes displayed in the second graphic. The second graphic shows the sequence view annotated by issues in geometry and atom inclusion in map density. Residues are color-coded according to the number of geometric quality criteria for which they contain at least one outlier: green = 0, yellow = 1, orange = 2 and red = 3 or more. A red diamond above a residue indicates a poor fit to the EM map for this residue (all atom inclusion < 40%). Stretches of 2 or more consecutive residues without any outlier are shown as a green connector. Residues present in the sample, but not in the model, are shown in grey.

- Molecule 1: Polymerase 3



- Molecule 2: RNA-directed RNA polymerase catalytic subunit



4 Experimental information

Property	Value	Source
EM reconstruction method	SINGLE PARTICLE	Depositor
Imposed symmetry	POINT, C1	Depositor
Number of particles used	62457	Depositor
Resolution determination method	FSC 0.143 CUT-OFF	Depositor
CTF correction method	PHASE FLIPPING AND AMPLITUDE CORRECTION	Depositor
Microscope	FEI TITAN KRIOS	Depositor
Voltage (kV)	300	Depositor
Electron dose ($e^-/\text{\AA}^2$)	40	Depositor
Minimum defocus (nm)	Not provided	Depositor
Maximum defocus (nm)	Not provided	Depositor
Magnification	Not provided	Depositor
Image detector	GATAN K2 QUANTUM (4k x 4k)	Depositor
Maximum map value	0.289	Depositor
Minimum map value	-0.168	Depositor
Average map value	0.001	Depositor
Map value standard deviation	0.009	Depositor
Recommended contour level	0.0137	Depositor
Map size (\AA)	244.8, 244.8, 244.8	Depositor
Map dimensions	180, 180, 180	Depositor
Map angles ($^\circ$)	90.0, 90.0, 90.0	Depositor
Pixel spacing (\AA)	1.36, 1.36, 1.36	Depositor

5 Model quality [i](#)

5.1 Standard geometry [i](#)

The Z score for a bond length (or angle) is the number of standard deviations the observed value is removed from the expected value. A bond length (or angle) with $|Z| > 5$ is considered an outlier worth inspection. RMSZ is the root-mean-square of all Z scores of the bond lengths (or angles).

Mol	Chain	Bond lengths		Bond angles	
		RMSZ	# $ Z > 5$	RMSZ	# $ Z > 5$
1	A	0.30	0/4267	0.52	0/5725
2	B	0.29	0/5674	0.51	0/7616
3	C	0.27	0/2053	0.49	0/2765
4	R	0.37	0/179	1.21	0/275
5	V	0.64	1/372 (0.3%)	0.89	0/578
All	All	0.31	1/12545 (0.0%)	0.55	0/16959

All (1) bond length outliers are listed below:

Mol	Chain	Res	Type	Atoms	Z	Observed(Å)	Ideal(Å)
5	V	1	A	OP3-P	-10.60	1.48	1.61

There are no bond angle outliers.

There are no chirality outliers.

There are no planarity outliers.

5.2 Too-close contacts [i](#)

In the following table, the Non-H and H(model) columns list the number of non-hydrogen atoms and hydrogen atoms in the chain respectively. The H(added) column lists the number of hydrogen atoms added and optimized by MolProbity. The Clashes column lists the number of clashes within the asymmetric unit, whereas Symm-Clashes lists symmetry related clashes.

Mol	Chain	Non-H	H(model)	H(added)	Clashes	Symm-Clashes
1	A	4176	0	4138	62	0
2	B	5578	0	5610	86	0
3	C	2006	0	2046	29	0
4	R	163	0	86	5	0
5	V	331	0	165	3	0
All	All	12254	0	12045	152	0

The all-atom clashscore is defined as the number of clashes found per 1000 atoms (including hydrogen atoms). The all-atom clashscore for this structure is 6.

All (152) close contacts within the same asymmetric unit are listed below, sorted by their clash magnitude.

Atom-1	Atom-2	Interatomic distance (Å)	Clash overlap (Å)
2:B:722:ALA:O	2:B:726:PHE:HB2	1.71	0.91
1:A:409:MET:SD	2:B:550:ARG:NH1	2.47	0.87
2:B:258:GLU:O	2:B:262:GLN:HB2	1.81	0.80
1:A:693:ARG:HH12	2:B:2:GLU:HB3	1.51	0.76
3:C:152:VAL:O	3:C:222:LYS:HA	1.86	0.74
5:V:5:G:OP2	5:V:5:G:N2	2.23	0.71
1:A:216:GLU:HA	2:B:329:LYS:HD2	1.75	0.69
2:B:725:GLN:O	2:B:730:ILE:HG13	1.93	0.68
2:B:721:ARG:O	2:B:725:GLN:HB2	1.95	0.67
1:A:504:GLU:HB2	1:A:549:TYR:HB2	1.74	0.67
3:C:165:GLU:O	3:C:169:LEU:HB2	1.96	0.65
2:B:721:ARG:HH21	2:B:725:GLN:HE22	1.46	0.64
1:A:601:ARG:HB3	1:A:617:SER:HB2	1.79	0.63
1:A:693:ARG:NH1	2:B:2:GLU:HB3	2.14	0.63
1:A:209:GLU:OE1	1:A:212:ARG:NH1	2.32	0.62
1:A:400:ILE:HG13	1:A:472:LEU:HD13	1.82	0.61
1:A:346:GLY:N	5:V:11:A:OP2	2.34	0.61
2:B:592:ILE:HG13	2:B:613:LYS:HZ2	1.64	0.61
1:A:263:HIS:O	1:A:551:ARG:NH2	2.34	0.61
3:C:98:SER:OG	3:C:99:PRO:HD2	2.00	0.60
2:B:281:LYS:NZ	3:C:149:ARG:HH21	2.00	0.60
2:B:680:LEU:HB3	2:B:684:ARG:NH1	2.16	0.60
2:B:304:ILE:HG23	2:B:450:LEU:HB3	1.84	0.59
2:B:159:THR:OG1	2:B:161:LYS:NZ	2.34	0.59
3:C:60:PRO:HG2	3:C:61:ILE:HG13	1.84	0.59
2:B:620:SER:O	2:B:624:ARG:HB2	2.03	0.58
1:A:693:ARG:NH2	2:B:2:GLU:OE1	2.36	0.58
2:B:680:LEU:HB3	2:B:684:ARG:HH12	1.70	0.56
2:B:592:ILE:HG13	2:B:613:LYS:NZ	2.21	0.56
3:C:186:ILE:O	3:C:190:PHE:N	2.39	0.56
1:A:335:PRO:HA	1:A:339:ARG:HH11	1.71	0.56
1:A:517:LYS:NZ	1:A:551:ARG:NH1	2.55	0.55
1:A:264:LYS:HE2	1:A:554:GLY:O	2.07	0.55
1:A:605:ALA:HA	2:B:3:ILE:HA	1.88	0.54
1:A:335:PRO:HA	1:A:339:ARG:HD3	1.89	0.54
2:B:472:LYS:NZ	2:B:477:ASN:HD22	2.05	0.54
1:A:606:HIS:HD2	2:B:7:LEU:HD11	1.73	0.53

Continued on next page...

Continued from previous page...

Atom-1	Atom-2	Interatomic distance (Å)	Clash overlap (Å)
1:A:216:GLU:HG2	2:B:329:LYS:HB2	1.91	0.53
1:A:517:LYS:HZ1	1:A:551:ARG:NH1	2.06	0.53
2:B:546:LEU:HB2	2:B:602:ILE:HD11	1.90	0.53
2:B:305:THR:HG21	2:B:492:GLU:HB3	1.90	0.53
2:B:722:ALA:O	2:B:726:PHE:CB	2.52	0.53
3:C:61:ILE:O	3:C:96:LEU:HA	2.09	0.52
2:B:490:LEU:HD12	2:B:499:SER:HA	1.92	0.52
1:A:522:GLU:C	1:A:548:LEU:H	2.13	0.52
1:A:583:LYS:NZ	2:B:15:THR:OG1	2.43	0.52
3:C:58:LYS:O	3:C:98:SER:HB2	2.09	0.51
2:B:567:SER:O	2:B:578:ARG:NH2	2.42	0.51
3:C:41:SER:HB2	4:R:7:C:H41	1.76	0.51
3:C:153:GLU:HB3	3:C:220:PRO:HB2	1.93	0.51
1:A:606:HIS:HB3	1:A:615:LEU:HD23	1.94	0.50
2:B:40:MET:O	2:B:44:SER:HB3	2.12	0.50
2:B:373:LYS:HE2	2:B:400:GLU:OE2	2.12	0.50
2:B:734:GLU:O	2:B:738:GLU:HB2	2.10	0.50
2:B:718:ILE:O	2:B:722:ALA:HB2	2.11	0.50
1:A:415:GLU:OE2	3:C:137:TRP:NE1	2.44	0.50
2:B:258:GLU:O	2:B:262:GLN:CB	2.57	0.50
1:A:661:ASP:HB3	1:A:663:LYS:HE2	1.93	0.50
2:B:301:MET:HA	2:B:452:CYS:O	2.11	0.50
1:A:266:LEU:HD23	1:A:269:ASP:HB2	1.93	0.49
2:B:49:TYR:OH	2:B:310:LYS:NZ	2.44	0.49
1:A:485:ILE:HB	1:A:501:VAL:HB	1.94	0.49
1:A:557:LYS:HD2	3:C:53:TRP:HH2	1.78	0.49
1:A:388:TRP:HH2	1:A:438:ARG:HH21	1.61	0.49
1:A:522:GLU:O	1:A:548:LEU:CB	2.60	0.49
2:B:154:GLN:HG2	2:B:159:THR:HA	1.94	0.49
1:A:597:LEU:HD23	1:A:620:LEU:HD23	1.95	0.48
2:B:281:LYS:HZ2	3:C:149:ARG:HH21	1.62	0.48
1:A:522:GLU:O	1:A:548:LEU:HB3	2.12	0.48
1:A:521:PHE:C	1:A:548:LEU:O	2.52	0.48
2:B:383:ASN:HB2	2:B:386:TRP:HD1	1.77	0.48
3:C:230:PRO:HG2	3:C:235:ARG:HD3	1.96	0.48
1:A:390:MET:HB3	1:A:629:VAL:HG21	1.95	0.47
2:B:519:ASN:ND2	2:B:661:SER:OG	2.47	0.47
2:B:428:ARG:HH12	2:B:438:TYR:HB2	1.80	0.47
2:B:8:LEU:O	2:B:12:ASN:ND2	2.47	0.47
2:B:421:GLY:HA3	2:B:443:GLN:HG2	1.97	0.47
3:C:31:SER:O	3:C:35:PHE:N	2.47	0.47

Continued on next page...

Continued from previous page...

Atom-1	Atom-2	Interatomic distance (Å)	Clash overlap (Å)
1:A:200:SER:HA	2:B:67:LYS:NZ	2.30	0.47
1:A:623:LEU:HD11	2:B:8:LEU:HD11	1.96	0.47
2:B:497:PHE:N	2:B:504:SER:OG	2.45	0.47
1:A:603:TRP:HB3	1:A:615:LEU:HD13	1.97	0.47
2:B:311:TRP:HZ3	2:B:476:ILE:HG23	1.80	0.47
2:B:429:GLU:HG3	2:B:430:GLU:HG3	1.97	0.47
2:B:332:SER:OG	2:B:333:ASN:N	2.48	0.47
2:B:291:THR:HG21	2:B:440:THR:HG21	1.96	0.47
2:B:688:VAL:HG21	3:C:23:LEU:HD22	1.97	0.46
2:B:136:SER:HA	2:B:185:LYS:NZ	2.30	0.46
1:A:646:CYS:HA	1:A:649:GLN:HG2	1.97	0.46
1:A:260:PRO:HD3	1:A:376:ARG:NH1	2.31	0.46
1:A:692:ASP:OD1	1:A:696:LYS:NZ	2.49	0.46
2:B:575:LYS:HE2	3:C:78:GLU:HB3	1.98	0.46
3:C:44:GLU:H	4:R:7:C:H42	1.62	0.46
3:C:230:PRO:O	3:C:235:ARG:NH2	2.49	0.45
1:A:517:LYS:HZ1	1:A:551:ARG:HH12	1.64	0.45
2:B:734:GLU:O	2:B:738:GLU:CB	2.64	0.45
3:C:150:ARG:O	3:C:224:PHE:HA	2.16	0.45
1:A:347:ARG:NH1	5:V:1:A:C8	2.84	0.45
1:A:606:HIS:HE1	1:A:696:LYS:HD3	1.82	0.45
1:A:663:LYS:NZ	2:B:488:PRO:HG3	2.32	0.44
1:A:192:LEU:HD11	2:B:216:ARG:HD2	1.98	0.44
3:C:98:SER:OG	3:C:99:PRO:CD	2.65	0.44
2:B:284:LEU:HA	2:B:287:THR:HG22	2.00	0.44
2:B:695:VAL:HG21	2:B:714:ILE:HG23	1.99	0.44
3:C:210:ALA:HA	3:C:213:MET:HG2	1.99	0.44
1:A:237:LYS:HE2	2:B:480:LEU:HD11	2.00	0.44
4:R:6:G:N3	4:R:6:G:H2'	2.32	0.44
2:B:320:TYR:O	2:B:324:LEU:HB2	2.18	0.44
2:B:138:ARG:NH1	4:R:8:U:O2	2.50	0.44
1:A:192:LEU:HD13	2:B:220:ILE:HD11	1.99	0.43
1:A:647:ASN:HA	1:A:650:LYS:NZ	2.33	0.43
3:C:237:GLU:HG2	3:C:238:LEU:HD12	2.00	0.43
3:C:74:PRO:HA	3:C:83:TRP:CD1	2.52	0.43
2:B:24:TYR:HA	2:B:235:ARG:NH1	2.33	0.43
2:B:311:TRP:HZ2	2:B:417:SER:HB3	1.82	0.43
1:A:263:HIS:CD2	1:A:265:PHE:H	2.36	0.43
3:C:176:GLU:HA	3:C:179:ALA:HB2	1.99	0.43
2:B:328:THR:HB	2:B:336:LYS:HA	2.00	0.42
2:B:427:TYR:O	2:B:428:ARG:NE	2.50	0.42

Continued on next page...

Continued from previous page...

Atom-1	Atom-2	Interatomic distance (Å)	Clash overlap (Å)
1:A:647:ASN:HD21	2:B:236:GLY:HA2	1.84	0.42
2:B:679:ALA:HA	2:B:682:GLU:HG2	2.01	0.42
3:C:66:GLU:HA	3:C:69:GLU:HG2	2.01	0.42
1:A:199:GLU:O	2:B:67:LYS:NZ	2.43	0.42
1:A:231:ASP:OD2	2:B:473:LEU:HG	2.19	0.42
2:B:359:ALA:O	2:B:367:GLU:HA	2.19	0.42
2:B:387:ARG:NH2	2:B:391:GLU:OE2	2.42	0.42
1:A:291:PHE:HA	1:A:294:ALA:HB3	2.02	0.41
1:A:494:ASP:HA	1:A:557:LYS:HE2	2.01	0.41
2:B:49:TYR:HE2	2:B:310:LYS:HG2	1.85	0.41
2:B:669:THR:N	4:R:6:G:OP1	2.53	0.41
1:A:671:LYS:NZ	1:A:675:GLU:OE2	2.53	0.41
1:A:417:GLU:OE2	2:B:602:ILE:HB	2.19	0.41
1:A:235:ARG:HH12	2:B:78:LEU:HG	1.85	0.41
2:B:489:GLU:HG3	2:B:500:GLY:HA2	2.03	0.41
2:B:553:LEU:HD22	2:B:598:LEU:HD22	2.02	0.41
1:A:424:CYS:O	1:A:428:GLU:HB3	2.20	0.41
1:A:455:ARG:HD3	3:C:53:TRP:CD2	2.55	0.41
1:A:521:PHE:HB3	1:A:522:GLU:H	1.65	0.41
2:B:47:TYR:OH	2:B:403:PHE:O	2.36	0.41
2:B:304:ILE:HA	2:B:484:TYR:O	2.21	0.41
2:B:299:GLN:HA	2:B:454:SER:O	2.20	0.41
3:C:152:VAL:HG21	3:C:227:THR:HG21	2.03	0.41
2:B:28:PRO:HB3	2:B:235:ARG:HE	1.85	0.41
3:C:32:TYR:HA	3:C:35:PHE:HB2	2.02	0.41
1:A:443:LEU:O	1:A:447:ILE:HB	2.21	0.41
2:B:24:TYR:HA	2:B:235:ARG:HH12	1.84	0.41
2:B:150:VAL:HA	2:B:153:ILE:HD12	2.03	0.41
1:A:522:GLU:CA	1:A:548:LEU:H	2.35	0.40
2:B:468:ILE:O	2:B:472:LYS:HB2	2.20	0.40
2:B:325:ALA:O	2:B:329:LYS:HB3	2.21	0.40
2:B:404:LEU:HD21	2:B:407:GLY:HA3	2.04	0.40
1:A:430:LYS:HG3	1:A:621:LYS:HB2	2.03	0.40

There are no symmetry-related clashes.

5.3 Torsion angles [i](#)

5.3.1 Protein backbone [i](#)

In the following table, the Percentiles column shows the percent Ramachandran outliers of the chain as a percentile score with respect to all PDB entries followed by that with respect to all EM entries.

The Analysed column shows the number of residues for which the backbone conformation was analysed, and the total number of residues.

Mol	Chain	Analysed	Favoured	Allowed	Outliers	Percentiles	
1	A	505/710 (71%)	464 (92%)	41 (8%)	0	100	100
2	B	691/753 (92%)	649 (94%)	39 (6%)	3 (0%)	34	72
3	C	245/772 (32%)	222 (91%)	23 (9%)	0	100	100
All	All	1441/2235 (64%)	1335 (93%)	103 (7%)	3 (0%)	50	81

All (3) Ramachandran outliers are listed below:

Mol	Chain	Res	Type
2	B	730	ILE
2	B	332	SER
2	B	731	ILE

5.3.2 Protein sidechains [i](#)

In the following table, the Percentiles column shows the percent sidechain outliers of the chain as a percentile score with respect to all PDB entries followed by that with respect to all EM entries.

The Analysed column shows the number of residues for which the sidechain conformation was analysed, and the total number of residues.

Mol	Chain	Analysed	Rotameric	Outliers	Percentiles	
1	A	455/639 (71%)	452 (99%)	3 (1%)	84	90
2	B	617/666 (93%)	615 (100%)	2 (0%)	92	95
3	C	213/681 (31%)	213 (100%)	0	100	100
All	All	1285/1986 (65%)	1280 (100%)	5 (0%)	91	94

All (5) residues with a non-rotameric sidechain are listed below:

Mol	Chain	Res	Type
1	A	330	ARG
1	A	416	MET
1	A	638	ASN
2	B	17	MET
2	B	84	ASN

Some sidechains can be flipped to improve hydrogen bonding and reduce clashes. All (10) such sidechains are listed below:

Mol	Chain	Res	Type
1	A	263	HIS
1	A	277	HIS
2	B	70	ASN
2	B	84	ASN
2	B	147	GLN
2	B	154	GLN
2	B	383	ASN
2	B	477	ASN
2	B	725	GLN
3	C	106	ASN

5.3.3 RNA [i](#)

Mol	Chain	Analysed	Backbone Outliers	Pucker Outliers
4	R	7/14 (50%)	1 (14%)	0
5	V	14/15 (93%)	2 (14%)	0
All	All	21/29 (72%)	3 (14%)	0

All (3) RNA backbone outliers are listed below:

Mol	Chain	Res	Type
4	R	6	G
5	V	4	A
5	V	11	A

There are no RNA pucker outliers to report.

5.4 Non-standard residues in protein, DNA, RNA chains [i](#)

There are no non-standard protein/DNA/RNA residues in this entry.

5.5 Carbohydrates [i](#)

There are no carbohydrates in this entry.

5.6 Ligand geometry [i](#)

There are no ligands in this entry.

5.7 Other polymers [i](#)

There are no such residues in this entry.

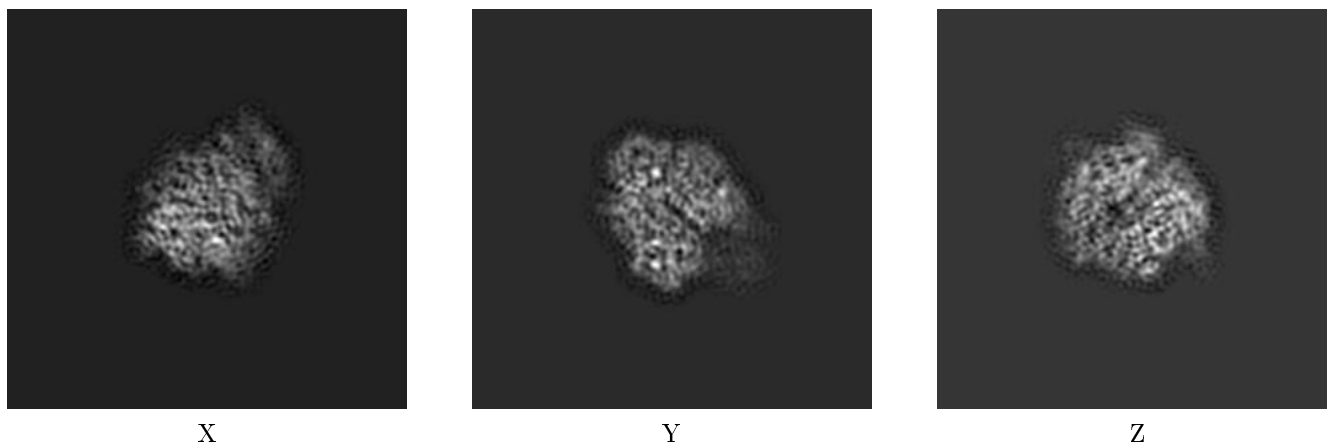
5.8 Polymer linkage issues [i](#)

There are no chain breaks in this entry.

6 Map visualisation [i](#)

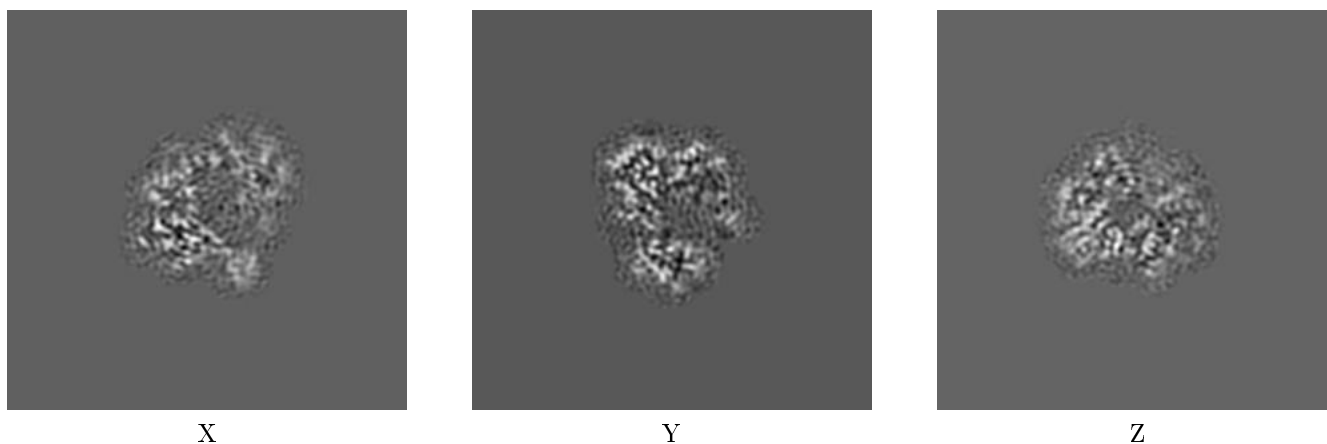
This section contains visualisations of the EMDB entry EMD-9579. These are intended to permit visual inspection of the internal detail of the map and identification of artifacts.

6.1 Orthogonal projections [i](#)



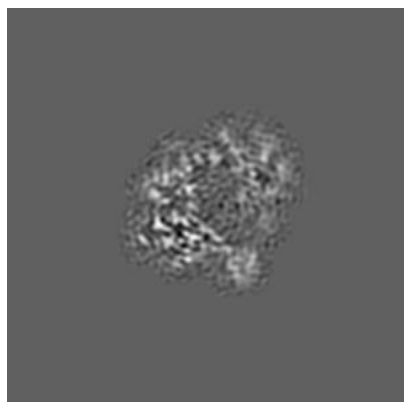
The images above show the map projected in three orthogonal projections, in greyscale.

6.2 Central slices [i](#)

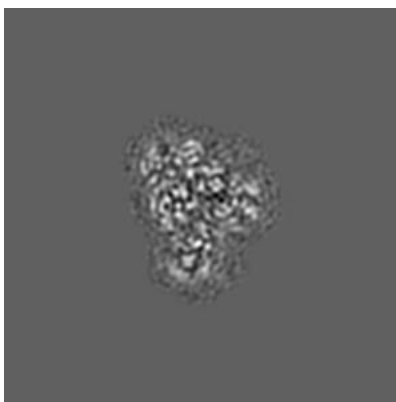


The images above show central slices of the map in three orthogonal directions, in greyscale.

6.3 Largest variance slices [i](#)



X Index: 90



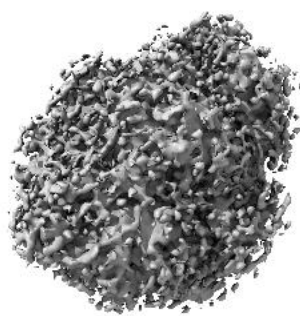
Y Index: 80



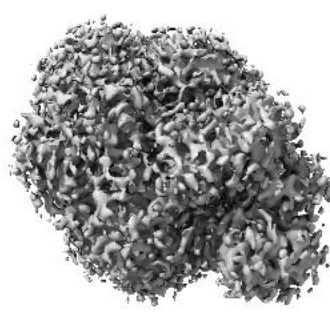
Z Index: 82

The images above show the highest variance slices of the map in three orthogonal directions, in greyscale.

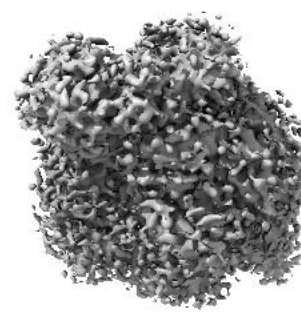
6.4 Orthogonal surface views [i](#)



X



Y



Z

The images above show the 3D surface view of the map at the recommended contour level 0.0137. This in conjunction with the slice images can indicate whether an appropriate contour level has been selected.

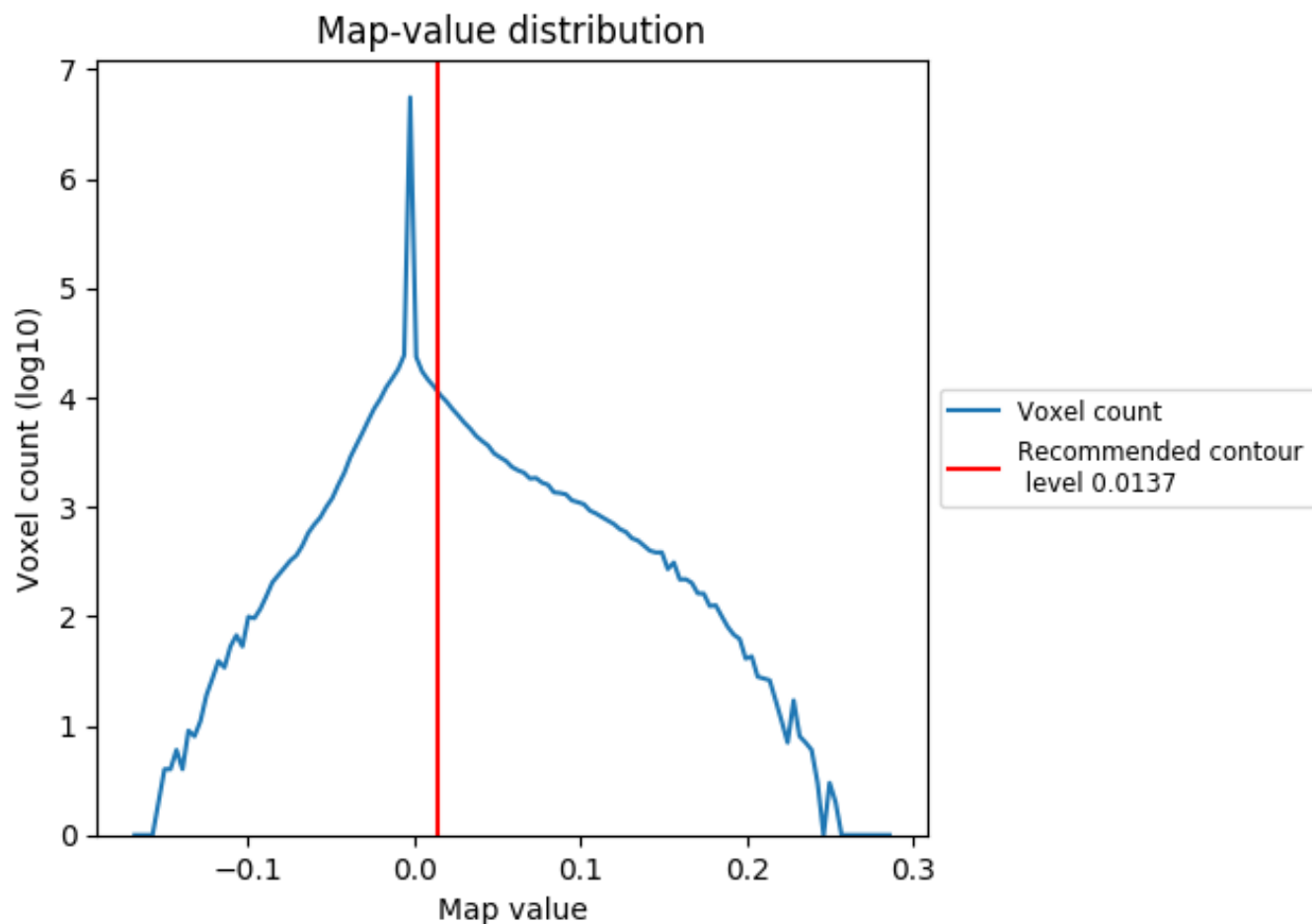
6.5 Mask visualisation [i](#)

This section was not generated. No masks were provided.

7 Map analysis [i](#)

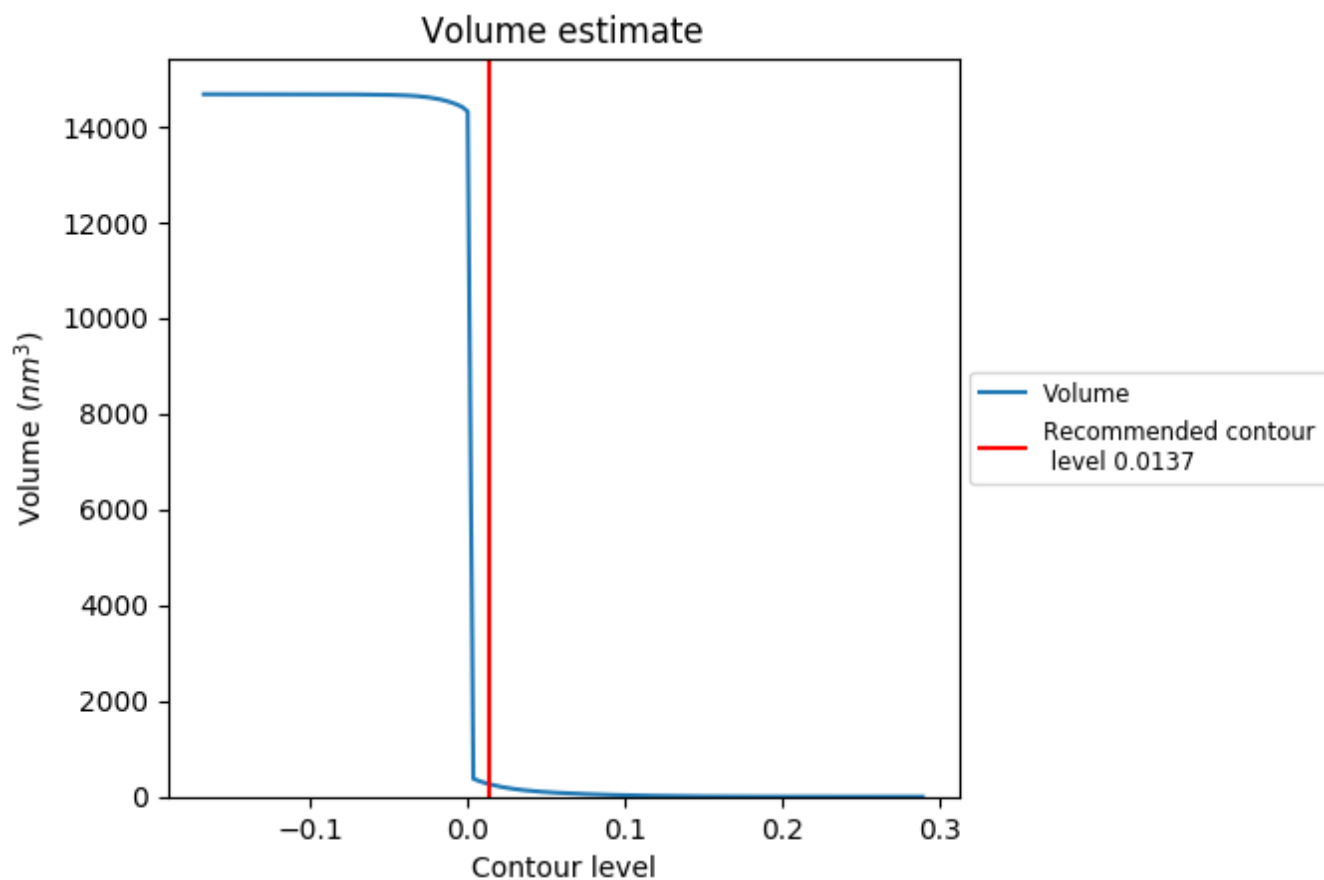
This section contains the results of statistical analysis of the map.

7.1 Map-value distribution [i](#)



The map-value distribution is plotted in 128 intervals along the x-axis. The y-axis is logarithmic. A spike in this graph at zero usually indicates that the volume has been masked.

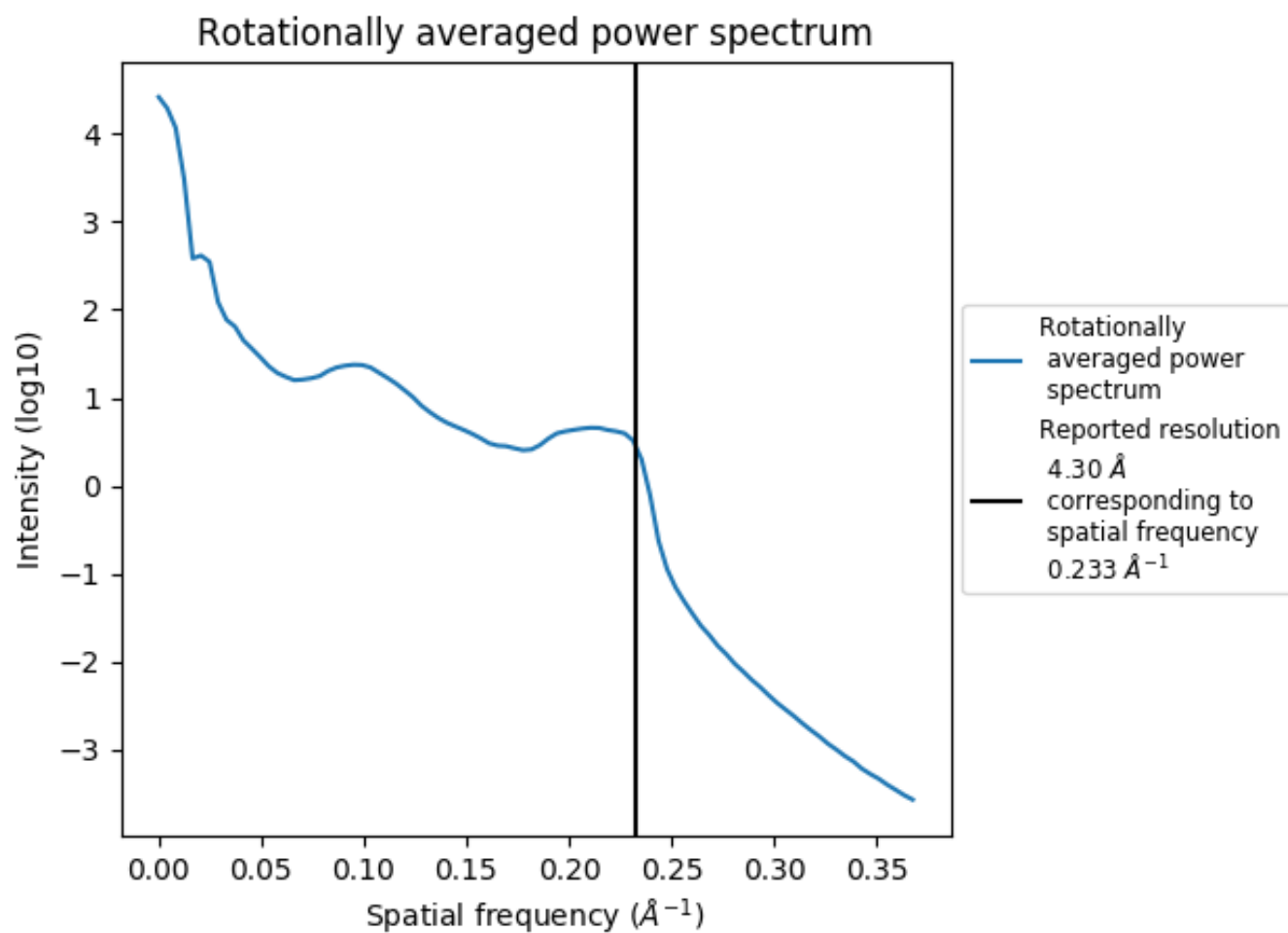
7.2 Volume estimate [i](#)



The volume at the recommended contour level is 261 nm³; this corresponds to an approximate mass of 236 kDa.

The volume estimate graph shows how the enclosed volume varies with the contour level. The recommended contour level is shown as a vertical line and the intersection between the line and the curve gives the volume of the enclosed surface at the given level.

7.3 Rotationally averaged power spectrum [i](#)



8 Fourier-Shell correlation [i](#)

Fourier-Shell Correlation (FSC) is the most commonly used method to estimate the resolution for single-particle and subtomogram-averaging methods. The shape of the curve depends on the imposed symmetry, mask and whether or not the two 3D reconstructions used were processed from a common reference. The reported resolution is shown as a black line. Curves are displayed for 3σ , 1-bit and 1/2-bit in addition to lines showing the 0.143 gold standard cut-off, 0.333 cut-off and legacy 0.5 cut-off.

8.1 Resolution estimates [i](#)

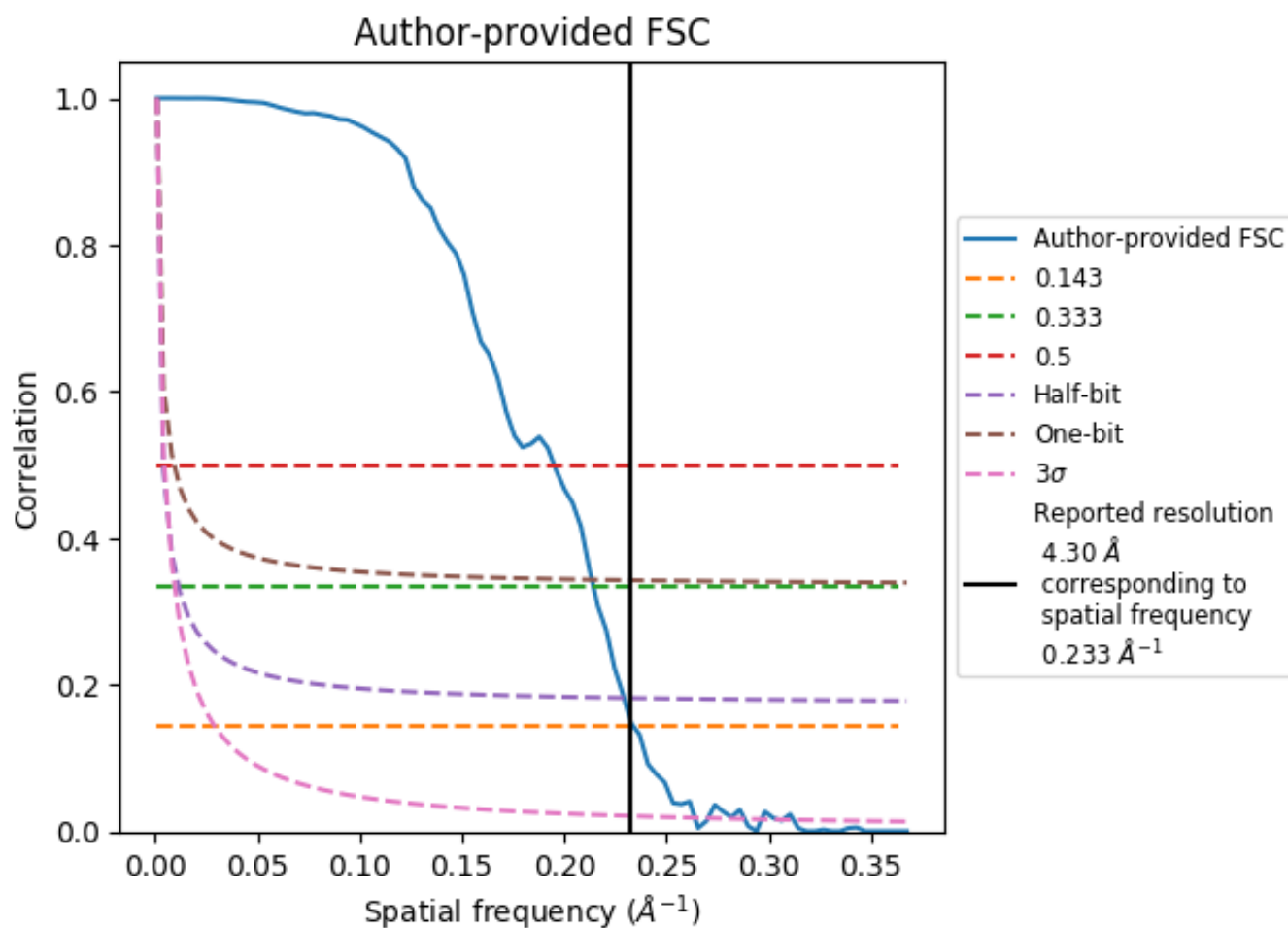
These are global values for the map.

Source	Criterion	Resolution estimate (Å)
Reported value	FSC 0.143 CUT-OFF	4.30
Author-provided FSC	FSC 0.5 CUT-OFF	5.24
Author-provided FSC	FSC 1 BIT CUT-OFF	4.77
Author-provided FSC	FSC 0.33 CUT-OFF	4.76
Author-provided FSC	FSC 1/2 BIT CUT-OFF	4.44
Author-provided FSC	FSC 0.143 CUT-OFF	4.35
Author-provided FSC	FSC 3 SIGMA CUT-OFF	3.85

8.2 Calculated FSC [i](#)

This section was not generated. Half-maps were not provided.

8.3 Author-provided FSC [i](#)

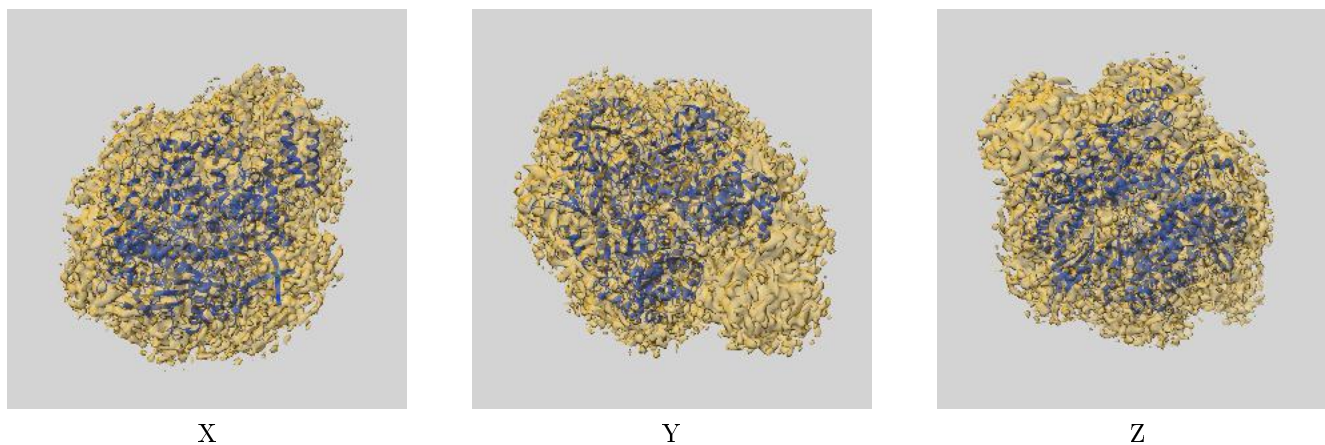


This FSC information was provided by the depositor.

9 Map-model fit [i](#)

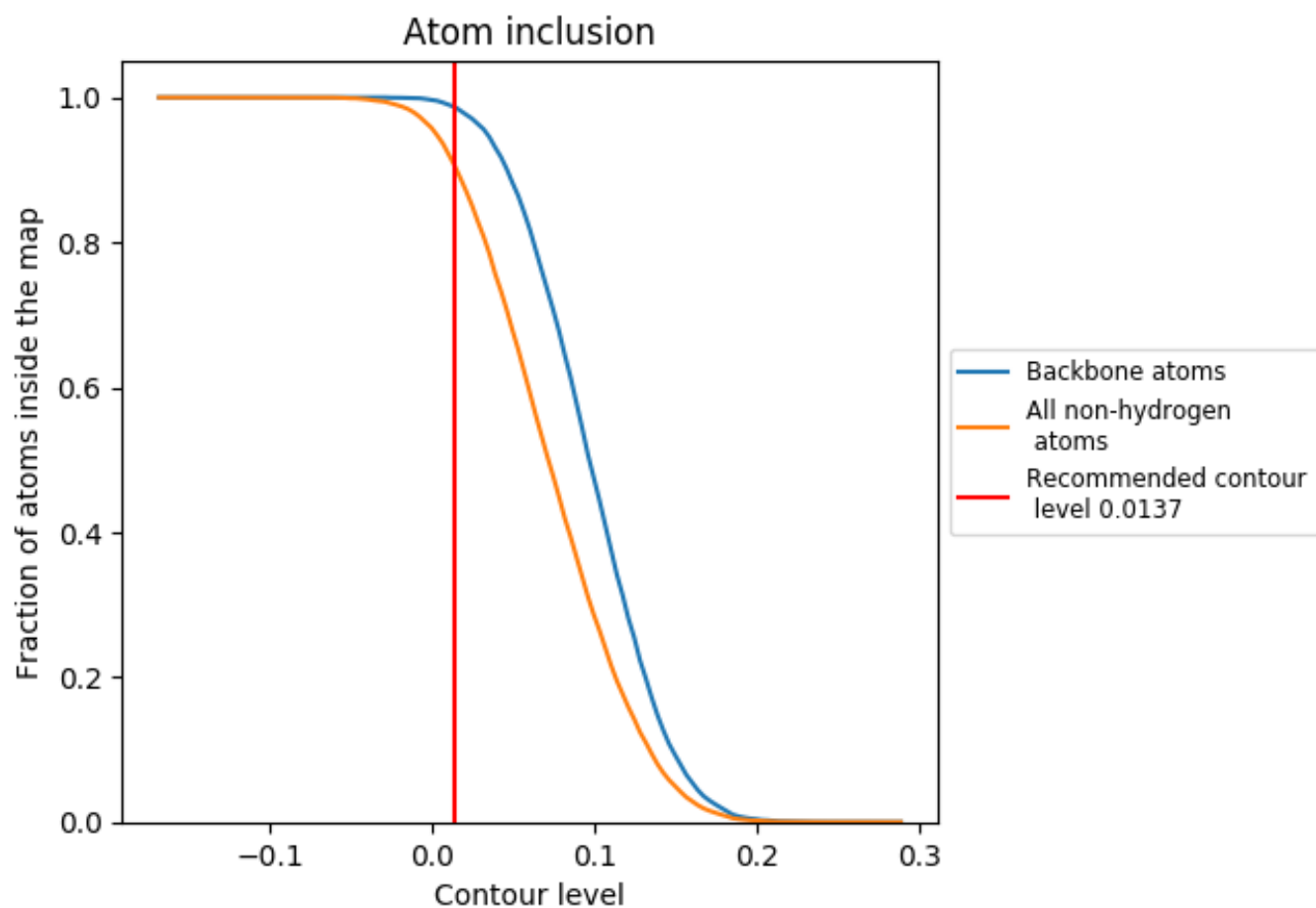
This section contains information regarding the fit between EMDB map EMD-9579 and PDB model 6KUP. Per-residue inclusion information can be found in section 3 on page 4.

9.1 Map-model overlay [i](#)



The images above show the 3D surface view of the map at the recommended contour level 0.0137 at 50% transparency in yellow overlaid with a ribbon representation of the model coloured in blue. These images allow for the visual assessment of the quality of fit between the atomic model and the map.

9.2 Atom inclusion [i](#)



At the recommended contour level, 99% of all backbone atoms, 91% of all non-hydrogen atoms, are inside the map.