



Full wwPDB EM Validation Report ⓘ

Nov 27, 2022 – 10:26 PM EST

PDB ID : 7L7B
EMDB ID : EMD-23210
Title : Clostridioides difficile RNAP with fidaxomicin
Authors : Boyaci, H.; Campbell, E.A.; Darst, S.A.; Chen, J.
Deposited on : 2020-12-28
Resolution : 3.26 Å (reported)

This is a Full wwPDB EM Validation Report for a publicly released PDB entry.

We welcome your comments at validation@mail.wwpdb.org

A user guide is available at

<https://www.wwpdb.org/validation/2017/EMValidationReportHelp>

with specific help available everywhere you see the ⓘ symbol.

The types of validation reports are described at

<http://www.wwpdb.org/validation/2017/FAQs#types>.

The following versions of software and data (see [references ⓘ](#)) were used in the production of this report:

EMDB validation analysis : 0.0.1.dev43
Mogul : 1.8.5 (274361), CSD as541be (2020)
MolProbity : 4.02b-467
buster-report : 1.1.7 (2018)
Percentile statistics : 20191225.v01 (using entries in the PDB archive December 25th 2019)
MapQ : 1.9.9
Ideal geometry (proteins) : Engh & Huber (2001)
Ideal geometry (DNA, RNA) : Parkinson et al. (1996)
Validation Pipeline (wwPDB-VP) : 2.31.2

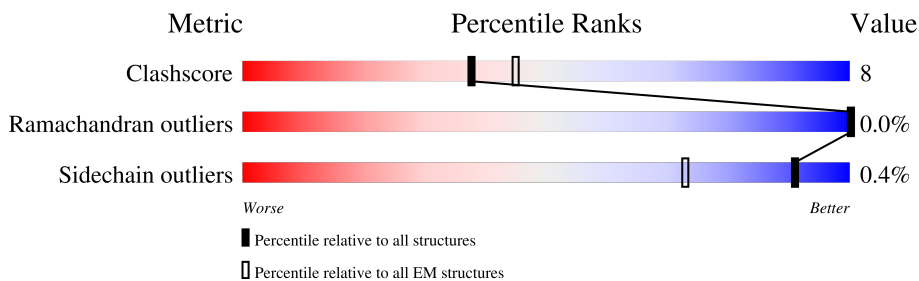
1 Overall quality at a glance i

The following experimental techniques were used to determine the structure:

ELECTRON MICROSCOPY

The reported resolution of this entry is 3.26 Å.

Percentile scores (ranging between 0-100) for global validation metrics of the entry are shown in the following graphic. The table shows the number of entries on which the scores are based.



Metric	Whole archive (#Entries)	EM structures (#Entries)
Clashscore	158937	4297
Ramachandran outliers	154571	4023
Sidechain outliers	154315	3826

The table below summarises the geometric issues observed across the polymeric chains and their fit to the map. The red, orange, yellow and green segments of the bar indicate the fraction of residues that contain outliers for ≥ 3 , 2, 1 and 0 types of geometric quality criteria respectively. A grey segment represents the fraction of residues that are not modelled. The numeric value for each fraction is indicated below the corresponding segment, with a dot representing fractions $\leq 5\%$. The upper red bar (where present) indicates the fraction of residues that have poor fit to the EM map (all-atom inclusion $< 40\%$). The numeric value is given above the bar.

Mol	Chain	Length	Quality of chain
1	A	315	
1	B	315	
2	C	1266	
3	D	1161	
4	E	88	
5	F	390	

2 Entry composition [i](#)

There are 9 unique types of molecules in this entry. The entry contains 49824 atoms, of which 25101 are hydrogens and 0 are deuteriums.

In the tables below, the AltConf column contains the number of residues with at least one atom in alternate conformation and the Trace column contains the number of residues modelled with at most 2 atoms.

- Molecule 1 is a protein called DNA-directed RNA polymerase subunit alpha.

Mol	Chain	Residues	Atoms					AltConf	Trace	
			Total	C	H	N	O			S
1	A	224	Total	C	H	N	O	S	0	0
			3482	1097	1759	280	343	3		
1	B	237	Total	C	H	N	O	S	0	0
			3688	1162	1863	295	364	4		

- Molecule 2 is a protein called DNA-directed RNA polymerase subunit beta.

Mol	Chain	Residues	Atoms					AltConf	Trace	
			Total	C	H	N	O			S
2	C	1166	Total	C	H	N	O	S	0	0
			18442	5791	9239	1591	1788	33		

There are 29 discrepancies between the modelled and reference sequences:

Chain	Residue	Modelled	Actual	Comment	Reference
C	-27	MET	-	initiating methionine	UNP Q18CF1
C	-26	TRP	-	expression tag	UNP Q18CF1
C	-25	SER	-	expression tag	UNP Q18CF1
C	-24	HIS	-	expression tag	UNP Q18CF1
C	-23	PRO	-	expression tag	UNP Q18CF1
C	-22	GLN	-	expression tag	UNP Q18CF1
C	-21	PHE	-	expression tag	UNP Q18CF1
C	-20	GLU	-	expression tag	UNP Q18CF1
C	-19	LYS	-	expression tag	UNP Q18CF1
C	-18	GLY	-	expression tag	UNP Q18CF1
C	-17	GLY	-	expression tag	UNP Q18CF1
C	-16	GLY	-	expression tag	UNP Q18CF1
C	-15	SER	-	expression tag	UNP Q18CF1
C	-14	GLY	-	expression tag	UNP Q18CF1
C	-13	GLY	-	expression tag	UNP Q18CF1
C	-12	GLY	-	expression tag	UNP Q18CF1
C	-11	SER	-	expression tag	UNP Q18CF1
C	-10	GLY	-	expression tag	UNP Q18CF1
C	-9	GLY	-	expression tag	UNP Q18CF1

Continued on next page...

Continued from previous page...

Chain	Residue	Modelled	Actual	Comment	Reference
C	-8	SER	-	expression tag	UNP Q18CF1
C	-7	ALA	-	expression tag	UNP Q18CF1
C	-6	TRP	-	expression tag	UNP Q18CF1
C	-5	SER	-	expression tag	UNP Q18CF1
C	-4	HIS	-	expression tag	UNP Q18CF1
C	-3	PRO	-	expression tag	UNP Q18CF1
C	-2	GLN	-	expression tag	UNP Q18CF1
C	-1	PHE	-	expression tag	UNP Q18CF1
C	0	GLU	-	expression tag	UNP Q18CF1
C	1	LYS	-	expression tag	UNP Q18CF1

- Molecule 3 is a protein called DNA-directed RNA polymerase subunit beta'.

Mol	Chain	Residues	Atoms					AltConf	Trace	
			Total	C	H	N	O	S		
3	D	1148	18266	5703	9241	1583	1700	39	0	0

- Molecule 4 is a protein called DNA-directed RNA polymerase subunit omega.

Mol	Chain	Residues	Atoms					AltConf	Trace	
			Total	C	H	N	O	S		
4	E	78	1279	395	651	109	122	2	0	0

- Molecule 5 is a protein called RNA polymerase sigma factor SigA.

Mol	Chain	Residues	Atoms					AltConf	Trace	
			Total	C	H	N	O	S		
5	F	272	4487	1396	2274	398	412	7	0	0

There is a discrepancy between the modelled and reference sequences:

Chain	Residue	Modelled	Actual	Comment	Reference
F	-1	LEU	-	expression tag	UNP A0A500XEZ5

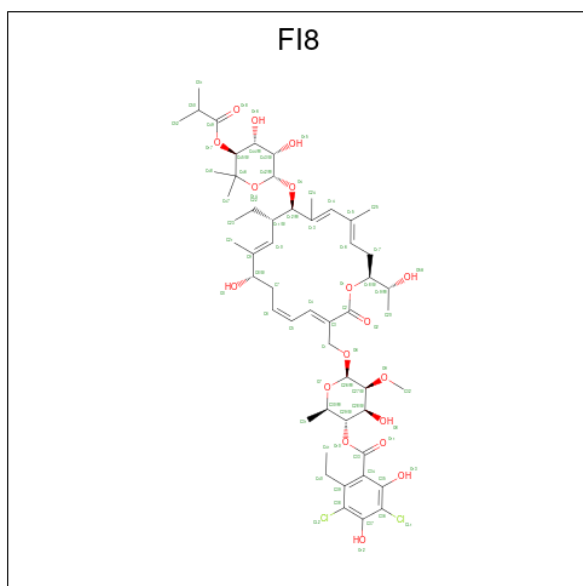
- Molecule 6 is ZINC ION (three-letter code: ZN) (formula: Zn).

Mol	Chain	Residues	Atoms		AltConf
			Total	Zn	
6	D	2	2	2	0

- Molecule 7 is MAGNESIUM ION (three-letter code: MG) (formula: Mg).

Mol	Chain	Residues	Atoms	AltConf
7	D	1	Total Mg 1 1	0

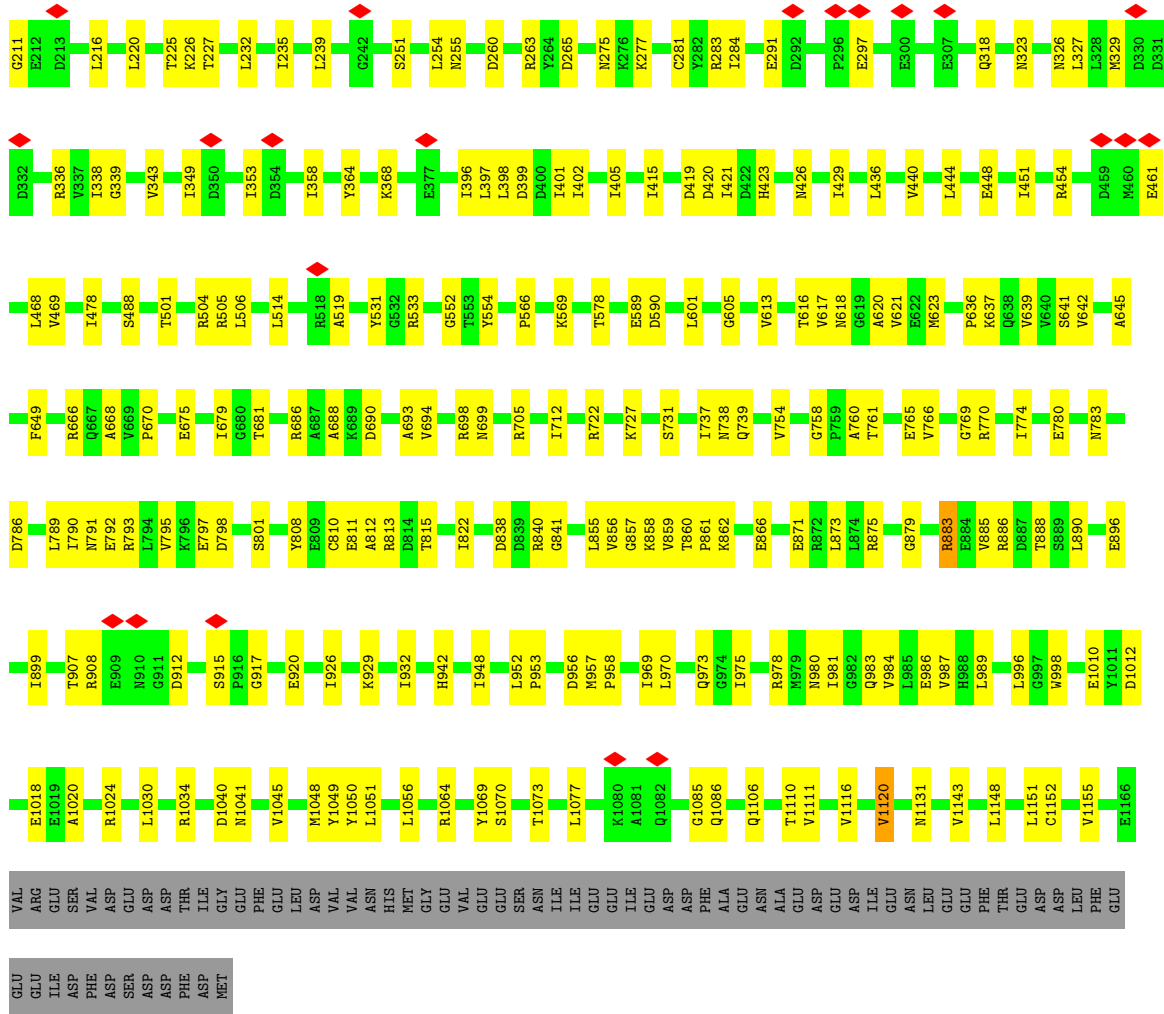
- Molecule 8 is Fidaxomicin (three-letter code: FI8) (formula: $C_{52}H_{74}Cl_2O_{18}$) (labeled as "Ligand of Interest" by depositor).



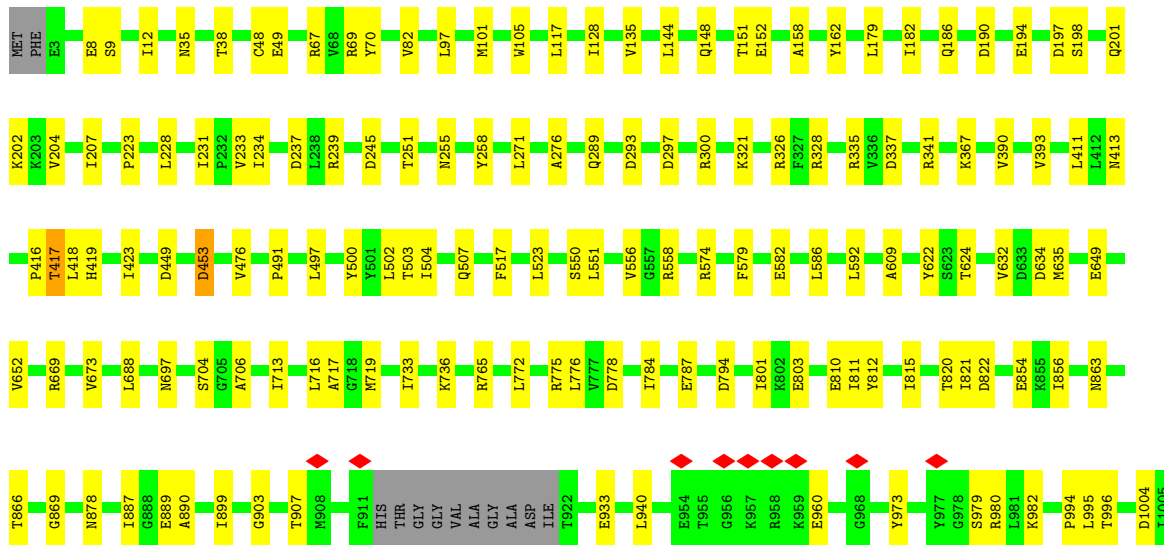
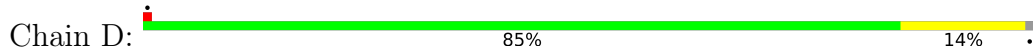
Mol	Chain	Residues	Atoms	AltConf
8	D	1	Total C Cl H O 146 52 2 74 18	0

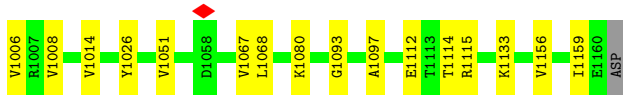
- Molecule 9 is water.

Mol	Chain	Residues	Atoms	AltConf
9	A	2	Total O 2 2	0
9	B	2	Total O 2 2	0
9	C	14	Total O 14 14	0
9	D	11	Total O 11 11	0
9	E	1	Total O 1 1	0
9	F	1	Total O 1 1	0

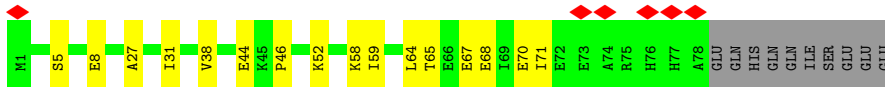


• Molecule 3: DNA-directed RNA polymerase subunit beta'

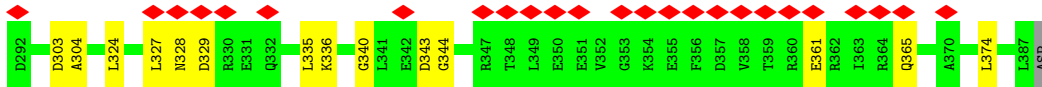
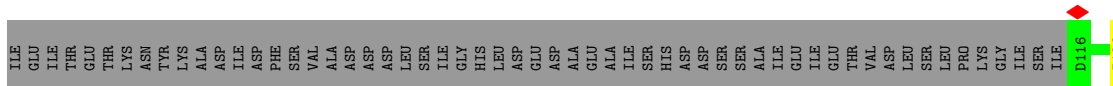
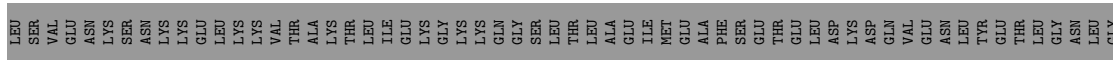




- Molecule 4: DNA-directed RNA polymerase subunit omega



- Molecule 5: RNA polymerase sigma factor SigA



4 Experimental information

Property	Value	Source
EM reconstruction method	SINGLE PARTICLE	Depositor
Imposed symmetry	POINT, Not provided	
Number of particles used	182390	Depositor
Resolution determination method	FSC 0.143 CUT-OFF	Depositor
CTF correction method	PHASE FLIPPING AND AMPLITUDE CORRECTION	Depositor
Microscope	FEI TITAN KRIOS	Depositor
Voltage (kV)	300	Depositor
Electron dose ($e^-/\text{\AA}^2$)	51	Depositor
Minimum defocus (nm)	Not provided	
Maximum defocus (nm)	Not provided	
Magnification	Not provided	
Image detector	GATAN K3 (6k x 4k)	Depositor
Maximum map value	4.116	Depositor
Minimum map value	-2.299	Depositor
Average map value	0.020	Depositor
Map value standard deviation	0.120	Depositor
Recommended contour level	0.4	Depositor
Map size (Å)	277.248, 277.248, 277.248	wwPDB
Map dimensions	256, 256, 256	wwPDB
Map angles (°)	90.0, 90.0, 90.0	wwPDB
Pixel spacing (Å)	1.083, 1.083, 1.083	Depositor

5 Model quality [i](#)

5.1 Standard geometry [i](#)

Bond lengths and bond angles in the following residue types are not validated in this section: MG, ZN, F18

The Z score for a bond length (or angle) is the number of standard deviations the observed value is removed from the expected value. A bond length (or angle) with $|Z| > 5$ is considered an outlier worth inspection. RMSZ is the root-mean-square of all Z scores of the bond lengths (or angles).

Mol	Chain	Bond lengths		Bond angles	
		RMSZ	# Z >5	RMSZ	# Z >5
1	A	0.25	0/1749	0.52	0/2378
1	B	0.25	0/1852	0.50	0/2518
2	C	0.29	0/9353	0.55	0/12637
3	D	0.32	3/9167 (0.0%)	0.56	2/12357 (0.0%)
4	E	0.26	0/636	0.53	0/855
5	F	0.25	0/2247	0.54	0/3020
All	All	0.29	3/25004 (0.0%)	0.55	2/33765 (0.0%)

Chiral center outliers are detected by calculating the chiral volume of a chiral center and verifying if the center is modelled as a planar moiety or with the opposite hand. A planarity outlier is detected by checking planarity of atoms in a peptide group, atoms in a mainchain group or atoms of a sidechain that are expected to be planar.

Mol	Chain	#Chirality outliers	#Planarity outliers
3	D	0	2

All (3) bond length outliers are listed below:

Mol	Chain	Res	Type	Atoms	Z	Observed(Å)	Ideal(Å)
3	D	417	THR	CB-CG2	-7.01	1.29	1.52
3	D	418	LEU	C-O	-6.46	1.11	1.23
3	D	419	HIS	C-O	-5.29	1.13	1.23

All (2) bond angle outliers are listed below:

Mol	Chain	Res	Type	Atoms	Z	Observed(°)	Ideal(°)
3	D	453	ASP	CB-CG-OD2	-9.08	110.13	118.30
3	D	453	ASP	CB-CG-OD1	5.73	123.45	118.30

There are no chirality outliers.

All (2) planarity outliers are listed below:

Mol	Chain	Res	Type	Group
3	D	413	ASN	Mainchain
3	D	453	ASP	Sidechain

5.2 Too-close contacts [i](#)

In the following table, the Non-H and H(model) columns list the number of non-hydrogen atoms and hydrogen atoms in the chain respectively. The H(added) column lists the number of hydrogen atoms added and optimized by MolProbity. The Clashes column lists the number of clashes within the asymmetric unit, whereas Symm-Clashes lists symmetry-related clashes.

Mol	Chain	Non-H	H(model)	H(added)	Clashes	Symm-Clashes
1	A	1723	1759	1759	46	0
1	B	1825	1863	1863	37	0
2	C	9203	9239	9244	195	0
3	D	9025	9241	9241	115	0
4	E	628	651	651	13	0
5	F	2213	2274	2273	26	0
6	D	2	0	0	0	0
7	D	1	0	0	0	0
8	D	72	74	0	1	0
9	A	2	0	0	0	0
9	B	2	0	0	0	0
9	C	14	0	0	0	0
9	D	11	0	0	1	0
9	E	1	0	0	0	0
9	F	1	0	0	0	0
All	All	24723	25101	25031	403	0

The all-atom clashscore is defined as the number of clashes found per 1000 atoms (including hydrogen atoms). The all-atom clashscore for this structure is 8.

All (403) close contacts within the same asymmetric unit are listed below, sorted by their clash magnitude.

Atom-1	Atom-2	Interatomic distance (Å)	Clash overlap (Å)
3:D:1006:VAL:HG22	3:D:1014:VAL:HG21	1.56	0.85
2:C:208:ASP:O	2:C:336:ARG:NH1	2.10	0.85
2:C:780:GLU:OE2	2:C:1034:ARG:NH2	2.09	0.85
2:C:1069:TYR:OH	3:D:337:ASP:OD2	1.94	0.85
2:C:1064:ARG:NH1	3:D:337:ASP:OD1	2.13	0.81

Continued on next page...

Continued from previous page...

Atom-1	Atom-2	Interatomic distance (Å)	Clash overlap (Å)
2:C:353:ILE:HD12	2:C:358:ILE:HD11	1.63	0.81
1:B:181:GLU:OE2	1:B:193:LYS:NZ	2.12	0.81
2:C:143:VAL:HG12	2:C:161:VAL:HG22	1.63	0.80
3:D:97:LEU:HD11	3:D:231:ILE:HD11	1.63	0.80
1:B:89:ILE:HG22	1:B:118:VAL:HG12	1.65	0.78
2:C:811:GLU:OE2	2:C:813:ARG:NH1	2.16	0.78
3:D:237:ASP:OD2	9:D:1501:HOH:O	2.04	0.76
2:C:793:ARG:NH1	2:C:797:GLU:OE2	2.19	0.76
2:C:504:ARG:NH2	2:C:552:GLY:O	2.19	0.76
1:B:152:GLU:OE1	1:B:155:LYS:NZ	2.18	0.75
3:D:289:GLN:NE2	3:D:293:ASP:OD1	2.18	0.75
1:A:54:ASN:OD1	1:A:154:ASN:ND2	2.19	0.75
3:D:866:THR:OG1	3:D:869:GLY:O	2.02	0.74
3:D:635:MET:SD	3:D:716:LEU:HD21	2.26	0.74
1:A:221:LEU:HD11	1:B:217:LEU:HD23	1.69	0.74
2:C:131:ARG:NH1	2:C:488:SER:O	2.23	0.72
2:C:284:ILE:HD12	2:C:327:LEU:HD21	1.71	0.71
3:D:979:SER:OG	3:D:996:THR:OG1	2.08	0.71
2:C:810:CYS:HB3	2:C:890:LEU:HD12	1.73	0.70
1:A:153:GLU:N	1:A:153:GLU:OE1	2.25	0.70
3:D:194:GLU:OE2	3:D:202:LYS:NZ	2.25	0.70
1:A:97:LEU:HD21	1:A:120:ILE:HD11	1.74	0.70
2:C:196:ARG:HH12	2:C:225:THR:HG23	1.58	0.69
1:A:215:LYS:NZ	1:A:219:GLU:OE2	2.18	0.69
3:D:128:ILE:HD12	3:D:135:VAL:HG11	1.73	0.69
5:F:361:GLU:OE2	5:F:365:GLN:NE2	2.26	0.69
3:D:502:LEU:HD21	3:D:622:TYR:CG	2.29	0.68
2:C:808:TYR:OH	2:C:896:GLU:OE1	2.09	0.68
2:C:51:SER:OG	2:C:52:PRO:HD3	1.94	0.68
2:C:50:ILE:N	2:C:50:ILE:HD13	2.07	0.67
3:D:899:ILE:O	3:D:1026:TYR:OH	2.12	0.67
3:D:234:ILE:O	3:D:239:ARG:NH1	2.28	0.67
2:C:38:PHE:CZ	2:C:436:LEU:HD22	2.30	0.67
3:D:652:VAL:HG23	3:D:673:VAL:HG22	1.77	0.67
4:E:65:THR:N	4:E:68:GLU:OE2	2.25	0.67
4:E:68:GLU:HA	4:E:71:ILE:HG22	1.76	0.66
3:D:321:LYS:O	3:D:328:ARG:NH1	2.29	0.65
2:C:890:LEU:HD23	2:C:890:LEU:O	1.96	0.65
3:D:982:LYS:NZ	3:D:996:THR:O	2.29	0.65
2:C:169:LEU:HD11	2:C:401:ILE:HD11	1.79	0.64
1:A:217:LEU:HD22	1:B:221:LEU:CD1	2.27	0.64

Continued on next page...

Continued from previous page...

Atom-1	Atom-2	Interatomic distance (Å)	Clash overlap (Å)
3:D:634:ASP:OD2	3:D:697:ASN:ND2	2.28	0.64
2:C:505:ARG:O	2:C:506:LEU:HD23	1.97	0.64
2:C:1018:GLU:OE1	2:C:1024:ARG:NH2	2.31	0.64
2:C:1155:VAL:HG12	3:D:12:ILE:HG12	1.80	0.64
5:F:188:LEU:HD12	5:F:211:ILE:HD11	1.78	0.64
2:C:210:LEU:HG	2:C:216:LEU:HD13	1.80	0.64
2:C:774:ILE:HD12	2:C:1048:MET:HB3	1.79	0.64
3:D:574:ARG:NH2	3:D:582:GLU:OE2	2.31	0.63
2:C:181:VAL:HG11	2:C:194:LEU:HD23	1.80	0.63
3:D:186:GLN:NE2	3:D:190:ASP:OD2	2.32	0.63
3:D:1112:GLU:OE2	3:D:1115:ARG:NE	2.30	0.63
1:A:56:ILE:HG22	1:A:140:ILE:HG23	1.80	0.62
2:C:196:ARG:NH1	2:C:225:THR:HG23	2.14	0.62
2:C:454:ARG:NH2	2:C:468:LEU:O	2.32	0.62
1:B:11:ILE:HG22	1:B:23:PHE:CD1	2.34	0.62
2:C:99:ASN:ND2	2:C:461:GLU:OE2	2.31	0.62
1:A:24:VAL:HG12	1:A:195:VAL:HG13	1.82	0.62
1:A:101:ALA:CB	1:A:107:ILE:HD11	2.29	0.62
3:D:854:GLU:N	3:D:854:GLU:OE1	2.32	0.62
2:C:952:LEU:HD11	2:C:957:MET:SD	2.40	0.61
3:D:765:ARG:HD2	3:D:907:THR:HG23	1.81	0.61
2:C:798:ASP:OD1	2:C:801:SER:OG	2.11	0.61
1:A:158:ASN:ND2	1:A:159:VAL:O	2.33	0.61
3:D:775:ARG:NH1	3:D:933:GLU:OE2	2.35	0.60
5:F:177:PHE:CZ	5:F:181:ILE:HD11	2.36	0.60
2:C:973:GLN:NE2	3:D:497:LEU:HD22	2.17	0.60
1:B:119:GLU:OE1	1:B:120:ILE:N	2.33	0.60
2:C:1086:GLN:OE1	3:D:341:ARG:NH1	2.34	0.60
3:D:48:CYS:SG	3:D:49:GLU:N	2.75	0.60
2:C:54:GLU:OE1	2:C:54:GLU:N	2.35	0.59
2:C:47:PHE:HE1	2:C:444:LEU:HD11	1.67	0.59
2:C:429:ILE:CD1	2:C:506:LEU:HD22	2.32	0.59
3:D:887:ILE:O	3:D:887:ILE:HG22	2.02	0.59
2:C:789:LEU:HD21	2:C:952:LEU:HD21	1.82	0.59
1:A:221:LEU:CD1	1:B:217:LEU:HD23	2.32	0.59
3:D:803:GLU:OE1	3:D:803:GLU:N	2.35	0.59
3:D:417:THR:HG22	3:D:417:THR:O	2.02	0.59
2:C:297:GLU:OE1	2:C:368:LYS:NZ	2.20	0.59
2:C:875:ARG:O	2:C:879:GLY:N	2.34	0.59
2:C:226:LYS:O	2:C:227:THR:OG1	2.17	0.58
2:C:731:SER:HA	2:C:737:ILE:HD11	1.85	0.58

Continued on next page...

Continued from previous page...

Atom-1	Atom-2	Interatomic distance (Å)	Clash overlap (Å)
2:C:284:ILE:CD1	2:C:327:LEU:HD21	2.33	0.58
2:C:440:VAL:HG22	2:C:478:ILE:HD11	1.86	0.58
3:D:801:ILE:O	3:D:801:ILE:HG22	2.04	0.57
2:C:645:ALA:O	2:C:681:THR:HG21	2.04	0.57
2:C:1040:ASP:OD1	2:C:1041:ASN:N	2.37	0.57
3:D:500:TYR:CE1	3:D:586:LEU:HD11	2.40	0.57
2:C:51:SER:OG	2:C:52:PRO:CD	2.52	0.57
2:C:686:ARG:NE	2:C:690:ASP:OD2	2.38	0.57
2:C:63:GLU:OE2	2:C:96:ARG:NE	2.37	0.57
5:F:159:ASN:O	5:F:163:VAL:HG23	2.04	0.57
1:A:89:ILE:HD11	1:A:142:VAL:HG12	1.87	0.57
1:B:102:GLN:N	1:B:102:GLN:OE1	2.37	0.56
5:F:236:ILE:HD12	5:F:277:ALA:HB2	1.86	0.56
3:D:688:LEU:HD22	3:D:717:ALA:O	2.05	0.56
3:D:1067:VAL:HG13	3:D:1068:LEU:HD22	1.86	0.56
2:C:1070:SER:OG	2:C:1073:THR:O	2.24	0.56
2:C:812:ALA:HB2	2:C:822:ILE:HD11	1.88	0.56
1:B:23:PHE:CE2	1:B:210:ILE:HD12	2.40	0.55
2:C:694:VAL:CG1	2:C:754:VAL:HG23	2.35	0.55
1:A:42:ARG:NH1	2:C:956:ASP:OD1	2.37	0.55
2:C:668:ALA:HB2	2:C:1051:LEU:HD23	1.87	0.55
2:C:942:HIS:NE2	2:C:986:GLU:OE1	2.40	0.55
3:D:179:LEU:HD13	3:D:223:PRO:O	2.06	0.55
4:E:27:ALA:O	4:E:31:ILE:HG23	2.07	0.55
1:B:59:ASP:OD2	1:B:137:ASN:ND2	2.40	0.55
2:C:758:GLY:N	2:C:761:THR:OG1	2.37	0.55
2:C:786:ASP:OD2	2:C:978:ARG:NH2	2.37	0.55
2:C:1085:GLY:O	3:D:335:ARG:NH1	2.39	0.55
1:B:89:ILE:HG22	1:B:118:VAL:CG1	2.36	0.55
2:C:783:ASN:ND2	2:C:969:ILE:HG22	2.22	0.55
5:F:246:LEU:HD21	5:F:250:LEU:HD21	1.87	0.55
2:C:10:ARG:NH1	2:C:765:GLU:OE1	2.39	0.55
2:C:235:ILE:HG21	2:C:254:LEU:HD11	1.89	0.55
2:C:144:TYR:HE2	2:C:162:ILE:HD11	1.71	0.54
2:C:774:ILE:HD11	2:C:1050:TYR:HE2	1.72	0.54
3:D:271:LEU:HD21	3:D:276:ALA:HB3	1.89	0.54
2:C:12:ARG:NH2	2:C:765:GLU:OE2	2.40	0.54
5:F:336:LYS:O	5:F:340:GLY:N	2.40	0.54
2:C:737:ILE:O	2:C:737:ILE:HG22	2.08	0.54
3:D:367:LYS:HG3	3:D:390:VAL:HG11	1.89	0.54
1:B:23:PHE:HE2	1:B:210:ILE:HD12	1.73	0.54

Continued on next page...

Continued from previous page...

Atom-1	Atom-2	Interatomic distance (Å)	Clash overlap (Å)
2:C:981:ILE:HD11	3:D:632:VAL:HG12	1.90	0.54
1:A:44:LEU:CD2	1:A:198:VAL:HG11	2.38	0.54
5:F:137:GLU:OE2	5:F:138:VAL:HG13	2.07	0.54
1:B:13:GLU:O	1:B:14:LEU:HD22	2.08	0.53
2:C:973:GLN:HE22	3:D:497:LEU:HD22	1.73	0.53
3:D:903:GLY:O	3:D:907:THR:HG22	2.09	0.53
1:A:97:LEU:HD23	1:A:112:ILE:HG21	1.90	0.53
2:C:181:VAL:HB	2:C:191:VAL:HG22	1.90	0.53
2:C:251:SER:O	2:C:255:ASN:ND2	2.42	0.53
2:C:952:LEU:HD12	2:C:953:PRO:O	2.09	0.53
4:E:31:ILE:HG22	4:E:46:PRO:HG2	1.90	0.53
2:C:198:LEU:HD13	2:C:398:LEU:CD1	2.39	0.53
1:A:79:ILE:HD12	1:A:166:VAL:CG1	2.39	0.53
3:D:97:LEU:HD13	3:D:101:MET:HG2	1.90	0.53
5:F:246:LEU:HD22	5:F:254:PRO:HB3	1.91	0.53
2:C:448:GLU:HA	2:C:451:ILE:HG22	1.91	0.53
2:C:698:ARG:O	2:C:699:ASN:ND2	2.41	0.53
5:F:324:LEU:HD13	5:F:335:LEU:HD23	1.91	0.53
2:C:670:PRO:HB3	2:C:760:ALA:HB2	1.91	0.52
3:D:158:ALA:O	3:D:162:TYR:N	2.38	0.52
1:B:43:ILE:HD11	1:B:217:LEU:HD13	1.92	0.52
2:C:858:LYS:NZ	2:C:888:THR:O	2.34	0.52
3:D:669:ARG:O	3:D:673:VAL:HG23	2.10	0.52
2:C:64:PHE:CD2	2:C:95:VAL:HG12	2.45	0.52
2:C:140:SER:O	2:C:144:TYR:OH	2.17	0.52
2:C:203:ASP:OD1	2:C:226:LYS:NZ	2.43	0.52
2:C:423:HIS:NE2	2:C:590:ASP:OD2	2.38	0.52
2:C:281:CYS:HA	2:C:284:ILE:HG22	1.90	0.52
2:C:822:ILE:HD12	2:C:920:GLU:HB2	1.92	0.52
2:C:193:VAL:HG23	2:C:194:LEU:HD22	1.92	0.51
2:C:323:ASN:OD1	2:C:339:GLY:N	2.43	0.51
2:C:440:VAL:CG2	2:C:478:ILE:HD11	2.40	0.51
5:F:343:ASP:N	5:F:343:ASP:OD1	2.42	0.51
2:C:531:TYR:CE1	2:C:639:VAL:HG11	2.45	0.51
2:C:983:GLN:O	2:C:987:VAL:HG23	2.11	0.51
4:E:5:SER:N	4:E:8:GLU:OE2	2.39	0.51
2:C:866:GLU:OE2	3:D:67:ARG:NH1	2.44	0.51
3:D:994:PRO:C	3:D:995:LEU:HD12	2.30	0.51
1:A:44:LEU:HD22	1:A:198:VAL:HG11	1.91	0.51
2:C:429:ILE:HD11	2:C:506:LEU:HD22	1.92	0.51
2:C:601:LEU:HD11	2:C:605:GLY:O	2.10	0.51

Continued on next page...

Continued from previous page...

Atom-1	Atom-2	Interatomic distance (Å)	Clash overlap (Å)
1:A:63:HIS:HB2	2:C:899:ILE:HD12	1.93	0.51
2:C:798:ASP:OD2	2:C:929:LYS:NZ	2.24	0.51
3:D:787:GLU:OE2	3:D:866:THR:HG22	2.11	0.51
2:C:641:SER:OG	2:C:642:VAL:N	2.43	0.50
3:D:502:LEU:HD21	3:D:622:TYR:CD2	2.46	0.50
2:C:179:ILE:HG22	2:C:191:VAL:HG21	1.93	0.50
3:D:503:THR:HG23	3:D:558:ARG:HE	1.77	0.50
5:F:328:ASN:OD1	5:F:329:ASP:N	2.45	0.50
1:B:96:THR:HG23	1:B:96:THR:O	2.12	0.50
2:C:144:TYR:CE2	2:C:162:ILE:HD11	2.47	0.49
3:D:82:VAL:O	3:D:82:VAL:HG13	2.12	0.49
1:B:73:GLU:N	1:B:73:GLU:OE1	2.45	0.49
2:C:616:THR:OG1	2:C:620:ALA:O	2.29	0.49
3:D:1093:GLY:O	3:D:1097:ALA:N	2.44	0.49
2:C:297:GLU:OE2	2:C:364:TYR:OH	2.31	0.49
2:C:329:MET:SD	2:C:415:ILE:HD11	2.53	0.49
1:A:35:THR:HG23	1:A:36:ILE:N	2.28	0.49
1:A:99:ILE:HD11	1:A:107:ILE:HG23	1.93	0.49
1:B:44:LEU:HA	1:B:48:LEU:HD13	1.94	0.49
1:B:97:LEU:HD21	1:B:120:ILE:HD11	1.95	0.49
2:C:260:ASP:OD1	2:C:263:ARG:N	2.43	0.49
3:D:772:LEU:O	3:D:776:LEU:HD23	2.13	0.49
2:C:291:GLU:OE2	2:C:326:ASN:ND2	2.31	0.49
2:C:855:LEU:HD23	2:C:856:VAL:HG23	1.95	0.49
5:F:163:VAL:HG11	5:F:185:ASN:OD1	2.13	0.49
1:A:217:LEU:HD23	1:A:221:LEU:HD22	1.95	0.49
2:C:774:ILE:HD11	2:C:1050:TYR:CE2	2.46	0.49
2:C:420:ASP:O	2:C:426:ASN:ND2	2.44	0.49
5:F:204:SER:O	5:F:208:THR:OG1	2.27	0.49
1:A:156:THR:O	1:A:156:THR:HG23	2.13	0.48
2:C:908:ARG:NH2	2:C:912:ASP:O	2.46	0.48
3:D:794:ASP:O	3:D:863:ASN:ND2	2.46	0.48
1:A:35:THR:HG23	1:A:36:ILE:H	1.78	0.48
1:B:74:ASP:OD1	1:B:75:VAL:N	2.45	0.48
3:D:326:ARG:NH1	8:D:1404:FI8:O15	2.45	0.48
5:F:340:GLY:O	5:F:344:GLY:N	2.45	0.48
1:A:184:ARG:CZ	1:A:189:THR:HG23	2.43	0.48
3:D:960:GLU:N	3:D:960:GLU:OE1	2.47	0.48
3:D:550:SER:OG	3:D:551:LEU:N	2.47	0.48
3:D:810:GLU:O	3:D:812:TYR:N	2.47	0.48
3:D:815:ILE:HD11	3:D:856:ILE:HG21	1.96	0.48

Continued on next page...

Continued from previous page...

Atom-1	Atom-2	Interatomic distance (Å)	Clash overlap (Å)
1:B:56:ILE:HD12	1:B:58:ILE:HD11	1.95	0.48
2:C:174:ASP:OD2	2:C:188:LYS:NZ	2.38	0.48
1:B:214:ALA:O	1:B:218:VAL:HG13	2.13	0.48
3:D:416:PRO:HG2	3:D:416:PRO:O	2.14	0.48
5:F:177:PHE:CE1	5:F:181:ILE:HD11	2.48	0.48
3:D:1004:ASP:O	3:D:1008:VAL:HG23	2.14	0.48
3:D:8:GLU:O	3:D:9:SER:OG	2.29	0.48
3:D:1156:VAL:HG13	4:E:59:ILE:HG23	1.95	0.48
2:C:429:ILE:HD12	2:C:506:LEU:HD22	1.96	0.47
2:C:980:ASN:OD1	2:C:983:GLN:NE2	2.47	0.47
1:A:79:ILE:HD11	1:A:164:LEU:HD11	1.95	0.47
1:A:97:LEU:CD2	1:A:120:ILE:HD11	2.41	0.47
3:D:411:LEU:HD13	3:D:423:ILE:HD11	1.96	0.47
1:A:35:THR:HG23	1:A:36:ILE:HG23	1.96	0.47
1:A:96:THR:HG23	1:A:96:THR:O	2.15	0.47
1:A:171:THR:HG23	1:A:171:THR:O	2.15	0.47
3:D:297:ASP:OD2	3:D:300:ARG:NE	2.40	0.47
5:F:324:LEU:HD12	5:F:327:LEU:HD12	1.97	0.47
1:A:79:ILE:HD12	1:A:166:VAL:HG12	1.97	0.47
2:C:203:ASP:HA	2:C:206:ILE:HG22	1.95	0.47
2:C:283:ARG:NH1	2:C:338:ILE:O	2.48	0.47
2:C:783:ASN:ND2	2:C:970:LEU:O	2.48	0.47
2:C:1152:CYS:SG	3:D:228:LEU:HD21	2.55	0.47
3:D:393:VAL:O	3:D:393:VAL:HG12	2.15	0.47
3:D:503:THR:O	3:D:586:LEU:HD12	2.14	0.47
3:D:878:ASN:ND2	3:D:889:GLU:OE1	2.48	0.47
4:E:44:GLU:OE2	4:E:52:LYS:NZ	2.43	0.47
5:F:303:ASP:OD1	5:F:304:ALA:N	2.48	0.47
2:C:861:PRO:HA	2:C:885:VAL:HG12	1.96	0.47
1:A:43:ILE:HD12	1:A:217:LEU:HD12	1.97	0.47
2:C:232:LEU:HD12	2:C:232:LEU:H	1.80	0.47
5:F:324:LEU:CD1	5:F:335:LEU:HD23	2.45	0.47
3:D:69:ARG:NH2	3:D:70:TYR:OH	2.48	0.47
3:D:765:ARG:CD	3:D:907:THR:HG23	2.45	0.47
3:D:778:ASP:OD1	3:D:1133:LYS:NZ	2.48	0.47
3:D:1006:VAL:HG22	3:D:1014:VAL:CG2	2.39	0.47
2:C:162:ILE:HG22	2:C:168:TRP:CD2	2.50	0.46
2:C:349:ILE:HD11	2:C:353:ILE:HD13	1.97	0.46
2:C:1030:LEU:HD21	2:C:1045:VAL:HG11	1.96	0.46
1:B:40:LEU:O	1:B:44:LEU:HD13	2.15	0.46
2:C:30:ILE:HG23	2:C:31:GLN:H	1.80	0.46

Continued on next page...

Continued from previous page...

Atom-1	Atom-2	Interatomic distance (Å)	Clash overlap (Å)
2:C:780:GLU:N	3:D:624:THR:OG1	2.44	0.46
2:C:1111:VAL:HG22	2:C:1111:VAL:O	2.15	0.46
4:E:64:LEU:HB2	4:E:68:GLU:OE2	2.15	0.46
1:A:39:ALA:HB1	1:A:217:LEU:HD11	1.98	0.46
2:C:397:LEU:O	2:C:398:LEU:C	2.53	0.46
3:D:97:LEU:HD13	3:D:101:MET:CG	2.45	0.46
3:D:649:GLU:OE2	3:D:736:LYS:NZ	2.48	0.46
3:D:1051:VAL:HG23	3:D:1051:VAL:O	2.14	0.46
2:C:790:ILE:HD13	2:C:948:ILE:HD13	1.98	0.46
2:C:888:THR:O	2:C:888:THR:HG23	2.16	0.46
2:C:694:VAL:HG13	2:C:754:VAL:HG23	1.98	0.46
2:C:1116:VAL:O	2:C:1120:VAL:HG13	2.15	0.46
2:C:318:GLN:O	2:C:343:VAL:HG12	2.16	0.46
3:D:251:THR:OG1	3:D:255:ASN:OD1	2.33	0.46
1:B:61:VAL:HG13	1:B:66:SER:OG	2.15	0.46
1:B:97:LEU:CD2	1:B:120:ILE:HD11	2.46	0.46
2:C:621:VAL:HB	3:D:733:ILE:HD11	1.98	0.46
1:B:81:THR:HG21	1:B:127:ILE:HA	1.99	0.45
1:B:92:GLU:HG3	1:B:92:GLU:O	2.16	0.45
2:C:398:LEU:O	2:C:402:ILE:HG23	2.17	0.45
2:C:915:SER:O	2:C:917:GLY:N	2.49	0.45
3:D:491:PRO:CG	3:D:592:LEU:HD13	2.46	0.45
3:D:144:LEU:HB3	3:D:148:GLN:NE2	2.31	0.45
2:C:202:THR:O	2:C:205:GLU:N	2.44	0.45
2:C:533:ARG:NH2	2:C:589:GLU:OE1	2.45	0.45
3:D:179:LEU:O	3:D:182:ILE:HG22	2.16	0.45
1:A:101:ALA:HB3	1:A:107:ILE:HD11	1.98	0.45
1:B:43:ILE:CD1	1:B:217:LEU:HD13	2.47	0.45
2:C:30:ILE:HG23	2:C:31:GLN:N	2.32	0.45
2:C:51:SER:CB	2:C:52:PRO:CD	2.95	0.45
3:D:233:VAL:HG22	3:D:258:TYR:CE1	2.52	0.45
3:D:688:LEU:HD21	3:D:713:ILE:HG22	1.99	0.45
1:A:227:LEU:O	1:A:228:THR:OG1	2.32	0.45
2:C:569:LYS:O	2:C:578:THR:OG1	2.34	0.45
2:C:981:ILE:HD12	3:D:635:MET:SD	2.57	0.45
2:C:1106:GLN:OE1	2:C:1110:THR:HG21	2.16	0.45
3:D:197:ASP:OD1	3:D:198:SER:N	2.51	0.44
3:D:940:LEU:HD23	3:D:940:LEU:H	1.81	0.44
2:C:165:ARG:NH1	2:C:265:ASP:OD2	2.50	0.44
1:B:196:LEU:CD2	1:B:210:ILE:HD11	2.47	0.44
2:C:617:VAL:HG23	2:C:618:ASN:N	2.32	0.44

Continued on next page...

Continued from previous page...

Atom-1	Atom-2	Interatomic distance (Å)	Clash overlap (Å)
5:F:126:ILE:CD1	5:F:164:VAL:HG21	2.48	0.44
1:B:44:LEU:HD12	1:B:213:ALA:CB	2.48	0.44
2:C:957:MET:HE3	2:C:958:PRO:HD2	1.99	0.44
3:D:523:LEU:HD11	3:D:556:VAL:HG13	1.99	0.44
1:A:159:VAL:HB	1:A:160:PRO:HD2	1.99	0.44
2:C:23:ASP:OD2	2:C:686:ARG:NH1	2.51	0.44
2:C:791:ASN:OD1	2:C:792:GLU:N	2.51	0.44
2:C:712:ILE:HD11	2:C:722:ARG:HH12	1.83	0.44
3:D:117:LEU:CD2	3:D:182:ILE:HD13	2.47	0.44
3:D:517:PHE:CE2	3:D:523:LEU:HD13	2.52	0.44
2:C:675:GLU:OE1	2:C:770:ARG:NH1	2.51	0.44
1:A:74:ASP:CG	2:C:727:LYS:HZ1	2.21	0.44
2:C:1077:LEU:H	2:C:1077:LEU:HD23	1.82	0.44
1:A:74:ASP:OD2	2:C:727:LYS:NZ	2.45	0.44
1:A:212:LEU:HD21	1:B:2:ILE:HD12	1.99	0.44
2:C:975:ILE:HD13	2:C:984:VAL:CG2	2.48	0.44
2:C:172:GLU:O	2:C:180:SER:N	2.39	0.43
2:C:688:ALA:HB2	2:C:766:VAL:HG23	2.00	0.43
2:C:1151:LEU:HD21	3:D:105:TRP:CZ2	2.53	0.43
2:C:123:THR:HG22	2:C:132:VAL:HG22	1.99	0.43
2:C:207:ILE:O	2:C:211:GLY:N	2.51	0.43
2:C:769:GLY:N	2:C:1049:TYR:OH	2.45	0.43
2:C:813:ARG:HD3	3:D:245:ASP:OD2	2.18	0.43
2:C:841:GLY:O	2:C:857:GLY:N	2.50	0.43
1:B:13:GLU:C	1:B:14:LEU:HD22	2.38	0.43
2:C:859:VAL:HG22	2:C:885:VAL:HB	1.99	0.43
5:F:327:LEU:HD11	5:F:374:LEU:HG	1.99	0.43
1:B:51:VAL:HG22	1:B:144:LYS:HB3	2.00	0.43
3:D:148:GLN:OE1	3:D:148:GLN:N	2.52	0.43
3:D:491:PRO:HG3	3:D:592:LEU:HD13	1.99	0.43
3:D:980:ARG:O	3:D:996:THR:OG1	2.36	0.43
2:C:514:LEU:HD13	2:C:519:ALA:HB2	2.00	0.43
2:C:996:LEU:HD21	2:C:1020:ALA:HA	2.01	0.43
3:D:476:VAL:HG23	3:D:609:ALA:HB2	2.01	0.43
1:A:79:ILE:HG23	1:A:166:VAL:HG12	2.00	0.43
3:D:820:THR:HG22	3:D:821:ILE:N	2.34	0.43
2:C:181:VAL:O	2:C:181:VAL:HG13	2.18	0.43
2:C:1131:ASN:HA	4:E:31:ILE:HD11	2.01	0.43
3:D:128:ILE:HD12	3:D:135:VAL:CG1	2.43	0.43
3:D:423:ILE:O	3:D:423:ILE:HG23	2.18	0.43
3:D:476:VAL:O	3:D:476:VAL:HG22	2.19	0.43

Continued on next page...

Continued from previous page...

Atom-1	Atom-2	Interatomic distance (Å)	Clash overlap (Å)
5:F:260:ALA:HB2	5:F:270:VAL:HG11	2.00	0.43
2:C:613:VAL:HG22	2:C:623:MET:HG2	2.00	0.43
1:A:108:THR:OG1	1:A:109:GLY:N	2.51	0.42
2:C:855:LEU:HD11	2:C:926:ILE:HD11	2.01	0.42
1:B:34:ILE:HG21	2:C:1034:ARG:HB2	2.02	0.42
2:C:705:ARG:HD3	2:C:712:ILE:HD12	2.01	0.42
2:C:862:LYS:NZ	2:C:883:ARG:O	2.50	0.42
2:C:1148:LEU:HD13	2:C:1155:VAL:HG11	2.00	0.42
5:F:179:ASP:OD1	5:F:179:ASP:N	2.51	0.42
2:C:649:PHE:HZ	2:C:989:LEU:HD13	1.84	0.42
3:D:105:TRP:CE2	3:D:1114:THR:HG23	2.55	0.42
5:F:246:LEU:HD11	5:F:258:GLU:OE2	2.19	0.42
1:A:218:VAL:HG23	1:B:218:VAL:HB	2.00	0.42
2:C:170:GLU:OE1	2:C:170:GLU:N	2.52	0.42
3:D:449:ASP:OD1	3:D:449:ASP:C	2.58	0.42
5:F:126:ILE:HD13	5:F:164:VAL:HG21	2.01	0.42
1:A:79:ILE:HG23	1:A:166:VAL:CG1	2.50	0.42
2:C:396:ILE:HD12	2:C:401:ILE:HD13	2.02	0.42
2:C:808:TYR:CE2	2:C:926:ILE:HD12	2.55	0.42
3:D:719:MET:HG3	3:D:736:LYS:HA	2.02	0.42
2:C:277:LYS:NZ	2:C:419:ASP:OD1	2.41	0.42
2:C:871:GLU:OE2	2:C:875:ARG:NE	2.53	0.42
2:C:989:LEU:HD23	2:C:989:LEU:O	2.20	0.42
3:D:201:GLN:HA	3:D:201:GLN:OE1	2.19	0.42
2:C:501:THR:HG21	2:C:666:ARG:CD	2.50	0.42
2:C:15:PHE:CE1	2:C:1012:ASP:OD2	2.73	0.42
1:B:99:ILE:HG23	1:B:99:ILE:O	2.20	0.41
4:E:31:ILE:HG22	4:E:46:PRO:CG	2.50	0.41
2:C:157:ILE:O	2:C:173:THR:HG22	2.20	0.41
2:C:738:ASN:OD1	2:C:739:GLN:N	2.53	0.41
2:C:996:LEU:HD13	2:C:998:TRP:CH2	2.55	0.41
3:D:1159:ILE:HG22	4:E:58:LYS:HA	2.02	0.41
1:A:152:GLU:N	1:A:152:GLU:OE2	2.53	0.41
2:C:1010:GLU:OE2	3:D:632:VAL:HG21	2.20	0.41
3:D:784:ILE:HG22	3:D:890:ALA:HA	2.02	0.41
3:D:822:ASP:N	3:D:822:ASP:OD1	2.52	0.41
4:E:67:GLU:O	4:E:70:GLU:HG2	2.21	0.41
2:C:207:ILE:HD11	2:C:220:LEU:HD12	2.01	0.41
2:C:693:ALA:O	2:C:694:VAL:HG23	2.20	0.41
1:A:40:LEU:O	1:A:44:LEU:HD13	2.20	0.41
3:D:811:ILE:HG13	3:D:811:ILE:O	2.21	0.41

Continued on next page...

Continued from previous page...

Atom-1	Atom-2	Interatomic distance (Å)	Clash overlap (Å)
2:C:198:LEU:HD13	2:C:398:LEU:HD13	2.02	0.41
3:D:35:ASN:ND2	3:D:38:THR:HG22	2.36	0.41
2:C:469:VAL:HG23	2:C:469:VAL:O	2.20	0.41
2:C:795:VAL:HG22	2:C:932:ILE:CG2	2.51	0.41
3:D:504:ILE:HG22	3:D:507:GLN:HE21	1.85	0.41
2:C:186:THR:HG21	2:C:239:LEU:HD23	2.03	0.41
2:C:420:ASP:OD1	2:C:421:ILE:N	2.54	0.41
2:C:636:PRO:O	2:C:637:LYS:HG2	2.21	0.41
3:D:151:THR:OG1	3:D:152:GLU:OE2	2.38	0.41
2:C:6:THR:HG23	2:C:6:THR:O	2.21	0.41
3:D:504:ILE:HG22	3:D:504:ILE:O	2.21	0.41
1:B:99:ILE:HD13	1:B:112:ILE:HA	2.04	0.40
2:C:195:LEU:HD21	2:C:405:ILE:HD13	2.04	0.40
2:C:907:THR:HG22	2:C:920:GLU:HG2	2.03	0.40
5:F:246:LEU:HD12	5:F:262:GLU:OE1	2.22	0.40
1:A:205:ASN:N	1:A:205:ASN:OD1	2.54	0.40
2:C:178:VAL:HG23	2:C:178:VAL:O	2.21	0.40
2:C:838:ASP:O	2:C:840:ARG:N	2.55	0.40
2:C:873:LEU:O	2:C:873:LEU:HD23	2.21	0.40
2:C:1056:LEU:H	2:C:1056:LEU:HD23	1.86	0.40
3:D:704:SER:O	3:D:706:ALA:N	2.54	0.40
4:E:38:VAL:HG23	4:E:38:VAL:O	2.21	0.40
1:A:10:ASP:O	1:A:10:ASP:OD1	2.39	0.40
2:C:102:THR:OG1	2:C:104:GLU:OE1	2.25	0.40
2:C:139:ARG:HH21	2:C:421:ILE:HG23	1.85	0.40
2:C:679:ILE:HD12	2:C:989:LEU:HD22	2.03	0.40
2:C:554:TYR:HB3	2:C:566:PRO:HG3	2.03	0.40
2:C:815:THR:HG23	2:C:860:THR:OG1	2.21	0.40
3:D:204:VAL:HA	3:D:207:ILE:HG12	2.04	0.40

There are no symmetry-related clashes.

5.3 Torsion angles

5.3.1 Protein backbone

In the following table, the Percentiles column shows the percent Ramachandran outliers of the chain as a percentile score with respect to all PDB entries followed by that with respect to all EM entries.

The Analysed column shows the number of residues for which the backbone conformation was analysed, and the total number of residues.

Mol	Chain	Analysed	Favoured	Allowed	Outliers	Percentiles	
1	A	222/315 (70%)	209 (94%)	13 (6%)	0	100	100
1	B	235/315 (75%)	219 (93%)	16 (7%)	0	100	100
2	C	1164/1266 (92%)	1079 (93%)	84 (7%)	1 (0%)	51	82
3	D	1144/1161 (98%)	1062 (93%)	82 (7%)	0	100	100
4	E	76/88 (86%)	70 (92%)	6 (8%)	0	100	100
5	F	270/390 (69%)	260 (96%)	10 (4%)	0	100	100
All	All	3111/3535 (88%)	2899 (93%)	211 (7%)	1 (0%)	100	100

All (1) Ramachandran outliers are listed below:

Mol	Chain	Res	Type
2	C	51	SER

5.3.2 Protein sidechains [i](#)

In the following table, the Percentiles column shows the percent sidechain outliers of the chain as a percentile score with respect to all PDB entries followed by that with respect to all EM entries.

The Analysed column shows the number of residues for which the sidechain conformation was analysed, and the total number of residues.

Mol	Chain	Analysed	Rotameric	Outliers	Percentiles	
1	A	195/280 (70%)	195 (100%)	0	100	100
1	B	208/280 (74%)	208 (100%)	0	100	100
2	C	1009/1096 (92%)	1002 (99%)	7 (1%)	84	90
3	D	983/991 (99%)	980 (100%)	3 (0%)	92	96
4	E	70/80 (88%)	70 (100%)	0	100	100
5	F	237/341 (70%)	235 (99%)	2 (1%)	81	89
All	All	2702/3068 (88%)	2690 (100%)	12 (0%)	91	94

All (12) residues with a non-rotameric sidechain are listed below:

Mol	Chain	Res	Type
2	C	53	ILE
2	C	275	ASN
2	C	399	ASP
2	C	883	ARG

Continued on next page...

Continued from previous page...

Mol	Chain	Res	Type
2	C	886	ARG
2	C	1120	VAL
2	C	1143	VAL
3	D	579	PHE
3	D	973	TYR
3	D	1080	LYS
5	F	161	ARG
5	F	196	ASP

Sometimes sidechains can be flipped to improve hydrogen bonding and reduce clashes. All (4) such sidechains are listed below:

Mol	Chain	Res	Type
1	A	154	ASN
3	D	878	ASN
5	F	248	GLN
5	F	294	HIS

5.3.3 RNA [i](#)

There are no RNA molecules in this entry.

5.4 Non-standard residues in protein, DNA, RNA chains [i](#)

There are no non-standard protein/DNA/RNA residues in this entry.

5.5 Carbohydrates [i](#)

There are no monosaccharides in this entry.

5.6 Ligand geometry [i](#)

Of 4 ligands modelled in this entry, 3 are monoatomic - leaving 1 for Mogul analysis.

In the following table, the Counts columns list the number of bonds (or angles) for which Mogul statistics could be retrieved, the number of bonds (or angles) that are observed in the model and the number of bonds (or angles) that are defined in the Chemical Component Dictionary. The Link column lists molecule types, if any, to which the group is linked. The Z score for a bond length (or angle) is the number of standard deviations the observed value is removed from the expected value. A bond length (or angle) with $|Z| > 2$ is considered an outlier worth inspection. RMSZ is the root-mean-square of all Z scores of the bond lengths (or angles).

Mol	Type	Chain	Res	Link	Bond lengths			Bond angles		
					Counts	RMSZ	# Z > 2	Counts	RMSZ	# Z > 2
8	FI8	D	1404	-	74,75,75	2.00	20 (27%)	88,109,109	1.66	14 (15%)

In the following table, the Chirals column lists the number of chiral outliers, the number of chiral centers analysed, the number of these observed in the model and the number defined in the Chemical Component Dictionary. Similar counts are reported in the Torsion and Rings columns. '-' means no outliers of that kind were identified.

Mol	Type	Chain	Res	Link	Chirals	Torsions	Rings
8	FI8	D	1404	-	-	11/75/118/118	0/3/4/4

All (20) bond length outliers are listed below:

Mol	Chain	Res	Type	Atoms	Z	Observed(Å)	Ideal(Å)
8	D	1404	FI8	C1-C3	6.21	1.58	1.50
8	D	1404	FI8	C14-C15	5.12	1.56	1.45
8	D	1404	FI8	O1-C2	4.21	1.44	1.34
8	D	1404	FI8	C14-C13	4.07	1.39	1.33
8	D	1404	FI8	O17-C49	4.02	1.43	1.34
8	D	1404	FI8	O1-C18	-3.71	1.39	1.46
8	D	1404	FI8	O10-C33	3.54	1.41	1.34
8	D	1404	FI8	C17-C16	3.09	1.56	1.50
8	D	1404	FI8	C38-CL2	3.07	1.79	1.72
8	D	1404	FI8	C10-C9	3.02	1.39	1.33
8	D	1404	FI8	C5-C4	2.94	1.52	1.43
8	D	1404	FI8	C2-C3	2.92	1.54	1.49
8	D	1404	FI8	C36-CL1	2.74	1.78	1.72
8	D	1404	FI8	O10-C29	-2.63	1.40	1.44
8	D	1404	FI8	C11-C10	2.53	1.54	1.50
8	D	1404	FI8	C21-C9	2.30	1.54	1.50
8	D	1404	FI8	O6-C26	2.20	1.43	1.40
8	D	1404	FI8	C34-C33	2.14	1.55	1.50
8	D	1404	FI8	C8-C9	2.07	1.54	1.51
8	D	1404	FI8	C24-C13	2.06	1.54	1.50

All (14) bond angle outliers are listed below:

Mol	Chain	Res	Type	Atoms	Z	Observed(°)	Ideal(°)
8	D	1404	FI8	O14-C46-C45	7.54	119.78	107.67
8	D	1404	FI8	O1-C2-C3	5.03	119.24	112.14
8	D	1404	FI8	O17-C49-C50	4.52	119.82	111.19
8	D	1404	FI8	C31-C30-C29	-3.60	107.93	113.41
8	D	1404	FI8	C7-C6-C5	-3.49	120.91	125.41

Continued on next page...

Continued from previous page...

Mol	Chain	Res	Type	Atoms	Z	Observed(°)	Ideal(°)
8	D	1404	FI8	C18-C17-C16	-3.01	107.84	113.02
8	D	1404	FI8	C38-C37-C36	2.85	120.65	117.81
8	D	1404	FI8	O2-C2-C3	-2.80	119.90	124.12
8	D	1404	FI8	C4-C5-C6	-2.74	117.21	123.63
8	D	1404	FI8	C47-C46-C45	-2.60	107.38	111.95
8	D	1404	FI8	C46-O14-C42	2.38	120.72	115.44
8	D	1404	FI8	C37-C36-CL1	2.14	120.48	118.08
8	D	1404	FI8	O17-C49-O18	-2.02	120.16	123.94
8	D	1404	FI8	O10-C33-C34	2.00	118.42	113.33

There are no chirality outliers.

All (11) torsion outliers are listed below:

Mol	Chain	Res	Type	Atoms
8	D	1404	FI8	C9-C10-C11-C22
8	D	1404	FI8	C17-C18-C19-C20
8	D	1404	FI8	C17-C18-C19-O5A
8	D	1404	FI8	O1-C18-C19-C20
8	D	1404	FI8	O1-C18-C19-O5A
8	D	1404	FI8	C50-C49-O17-C45
8	D	1404	FI8	O18-C49-O17-C45
8	D	1404	FI8	C11-C12-O4-C42
8	D	1404	FI8	C13-C14-C15-C25
8	D	1404	FI8	C12-C11-C22-C23
8	D	1404	FI8	C19-C18-O1-C2

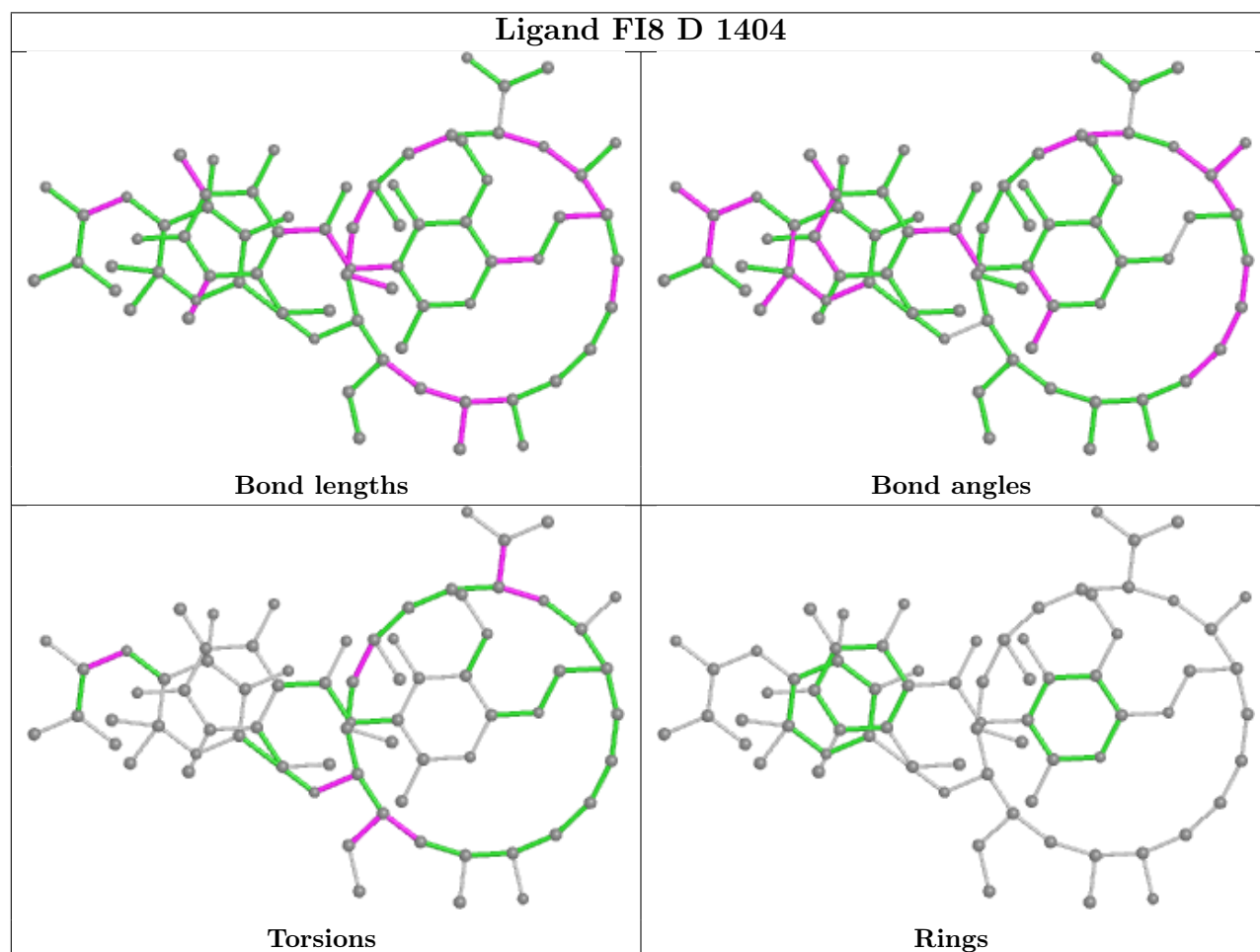
There are no ring outliers.

1 monomer is involved in 1 short contact:

Mol	Chain	Res	Type	Clashes	Symm-Clashes
8	D	1404	FI8	1	0

The following is a two-dimensional graphical depiction of Mogul quality analysis of bond lengths, bond angles, torsion angles, and ring geometry for all instances of the Ligand of Interest. In addition, ligands with molecular weight > 250 and outliers as shown on the validation Tables will also be included. For torsion angles, if less than 5% of the Mogul distribution of torsion angles is within 10 degrees of the torsion angle in question, then that torsion angle is considered an outlier. Any bond that is central to one or more torsion angles identified as an outlier by Mogul will be highlighted in the graph. For rings, the root-mean-square deviation (RMSD) between the ring in question and similar rings identified by Mogul is calculated over all ring torsion angles. If the average RMSD is greater than 60 degrees and the minimal RMSD between the ring in question and any Mogul-identified rings is also greater than 60 degrees, then that ring is considered an outlier.

The outliers are highlighted in purple. The color gray indicates Mogul did not find sufficient equivalents in the CSD to analyse the geometry.



5.7 Other polymers [i](#)

There are no such residues in this entry.

5.8 Polymer linkage issues [i](#)

There are no chain breaks in this entry.

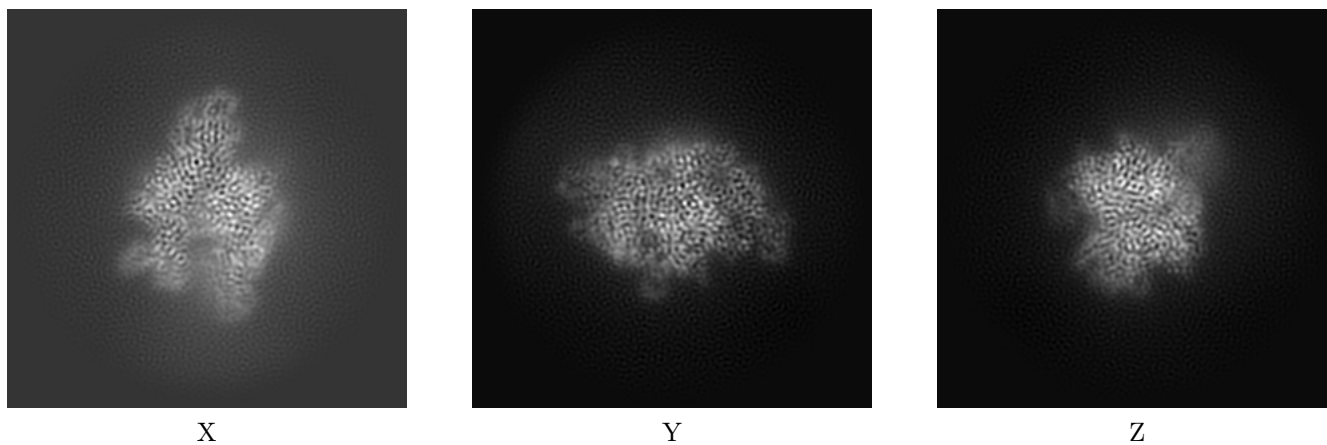
6 Map visualisation [i](#)

This section contains visualisations of the EMDB entry EMD-23210. These allow visual inspection of the internal detail of the map and identification of artifacts.

No raw map or half-maps were deposited for this entry and therefore no images, graphs, etc. pertaining to the raw map can be shown.

6.1 Orthogonal projections [i](#)

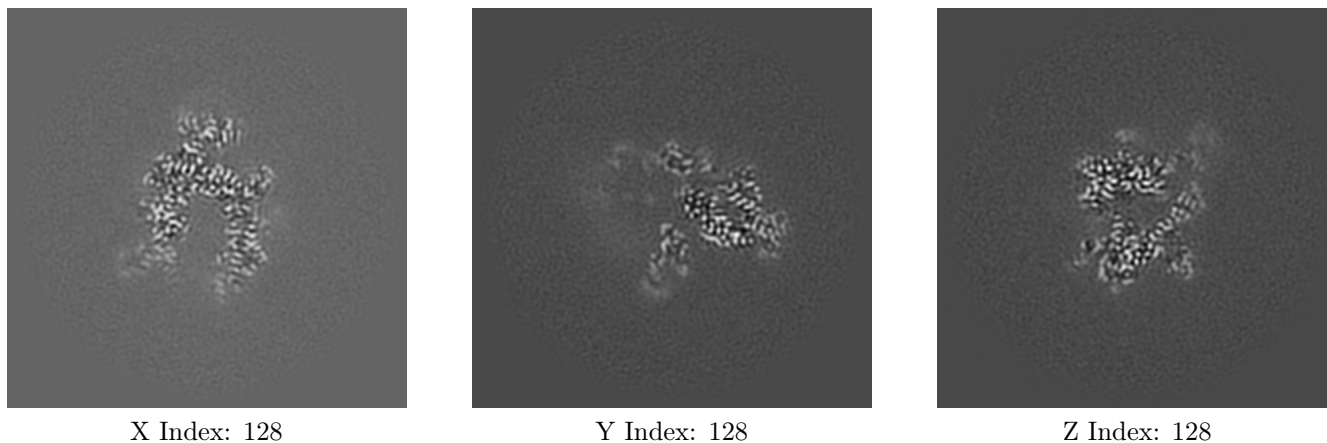
6.1.1 Primary map



The images above show the map projected in three orthogonal directions.

6.2 Central slices [i](#)

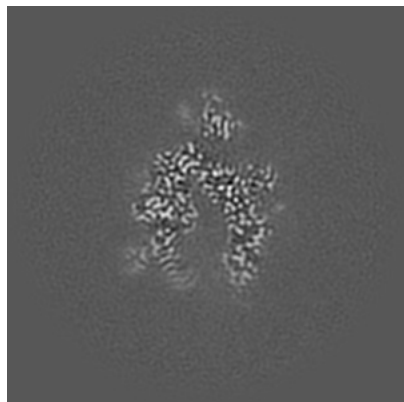
6.2.1 Primary map



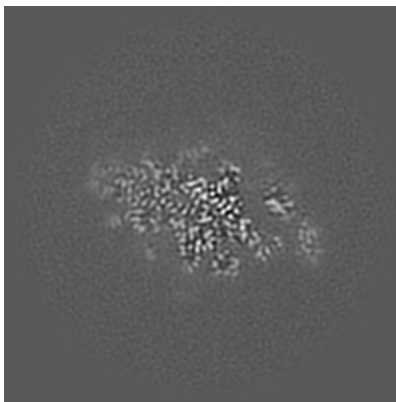
The images above show central slices of the map in three orthogonal directions.

6.3 Largest variance slices [i](#)

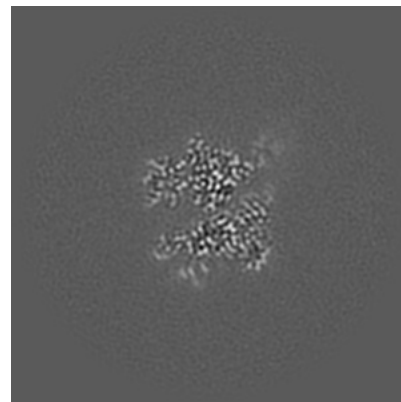
6.3.1 Primary map



X Index: 123



Y Index: 143



Z Index: 137

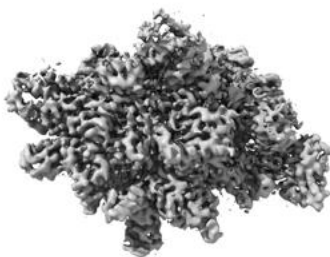
The images above show the largest variance slices of the map in three orthogonal directions.

6.4 Orthogonal surface views [i](#)

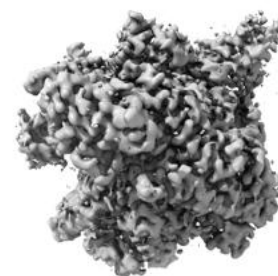
6.4.1 Primary map



X



Y



Z

The images above show the 3D surface view of the map at the recommended contour level 0.4. These images, in conjunction with the slice images, may facilitate assessment of whether an appropriate contour level has been provided.

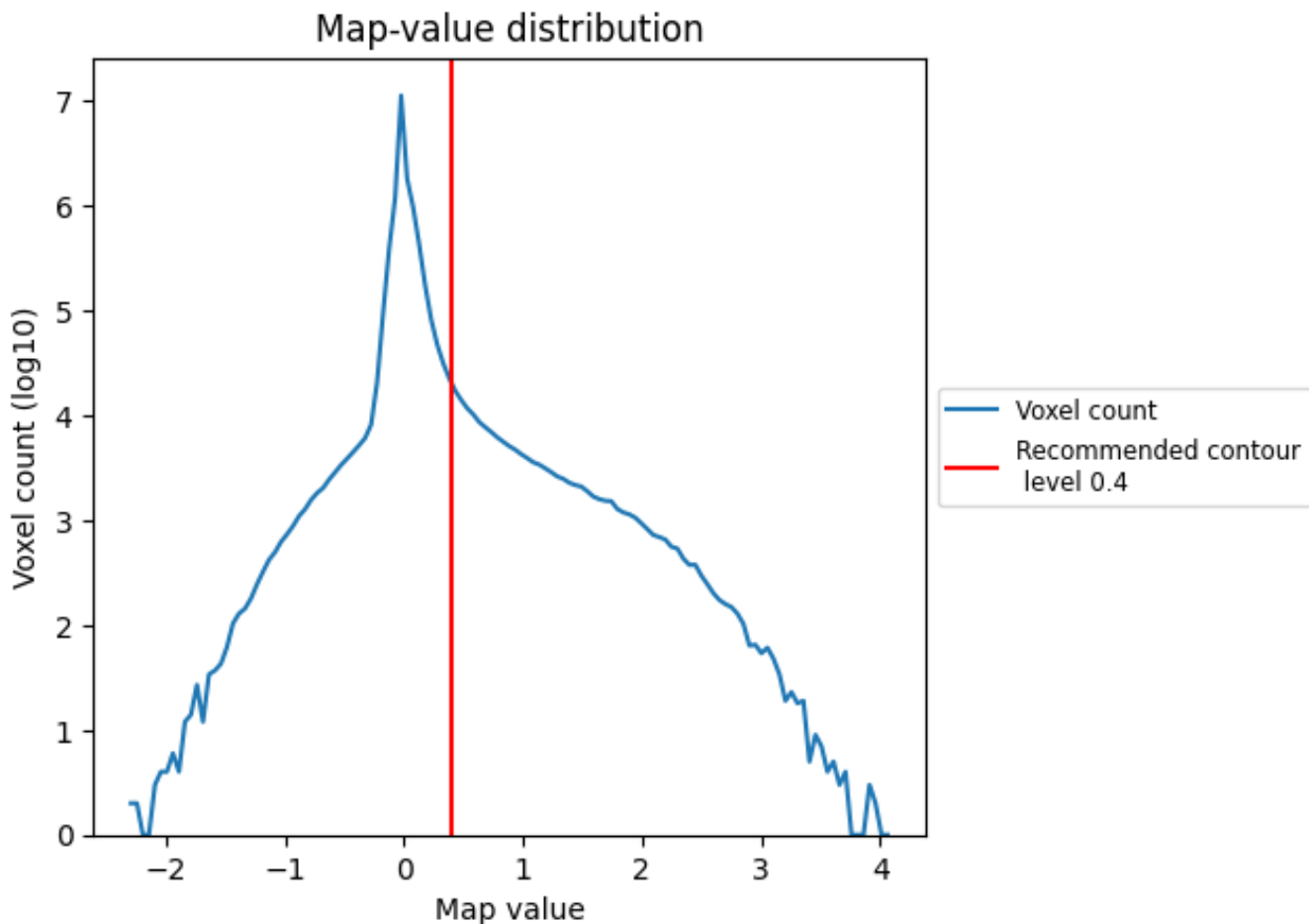
6.5 Mask visualisation

This section was not generated. No masks/segmentation were deposited.

7 Map analysis [i](#)

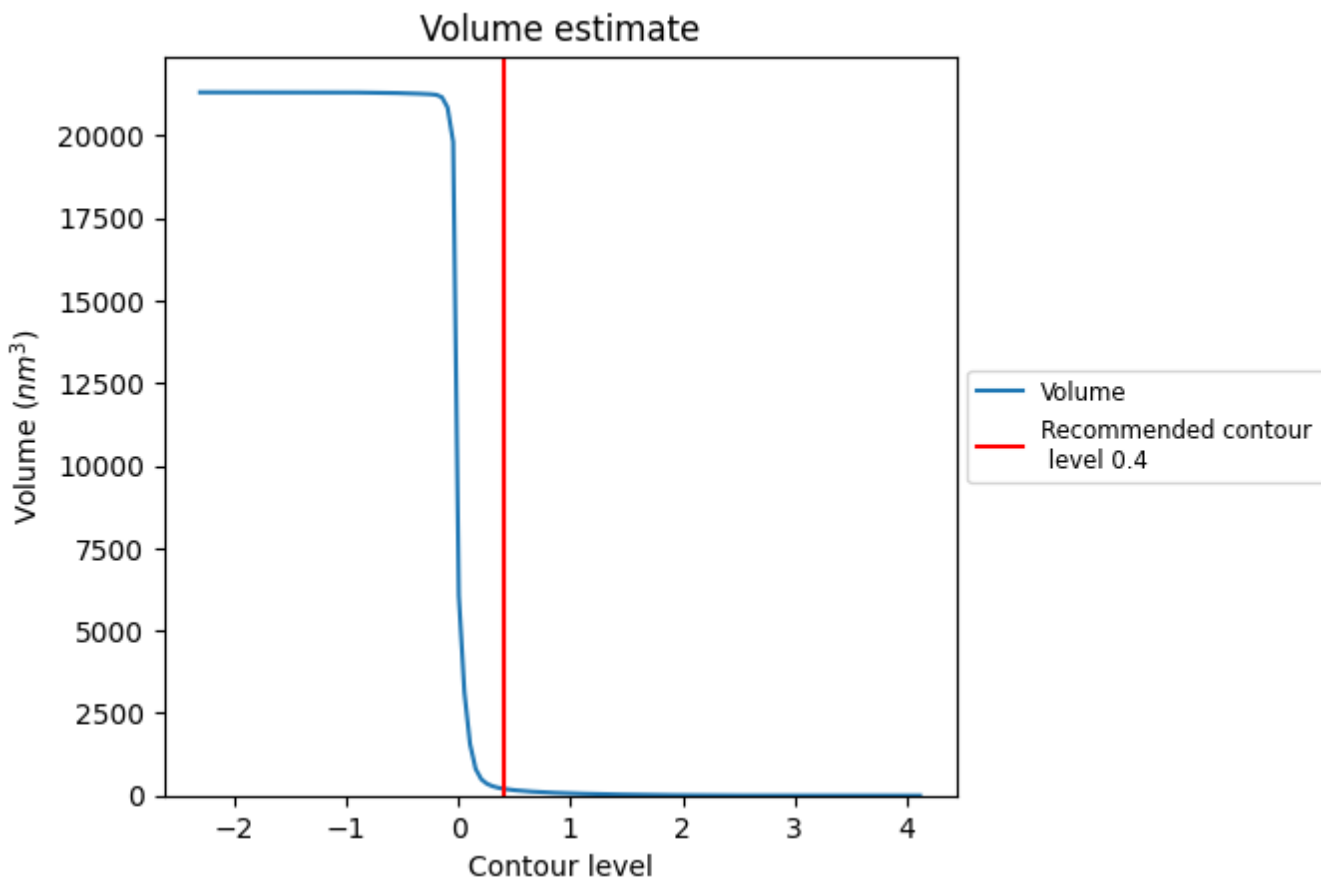
This section contains the results of statistical analysis of the map.

7.1 Map-value distribution [i](#)



The map-value distribution is plotted in 128 intervals along the x-axis. The y-axis is logarithmic. A spike in this graph at zero usually indicates that the volume has been masked.

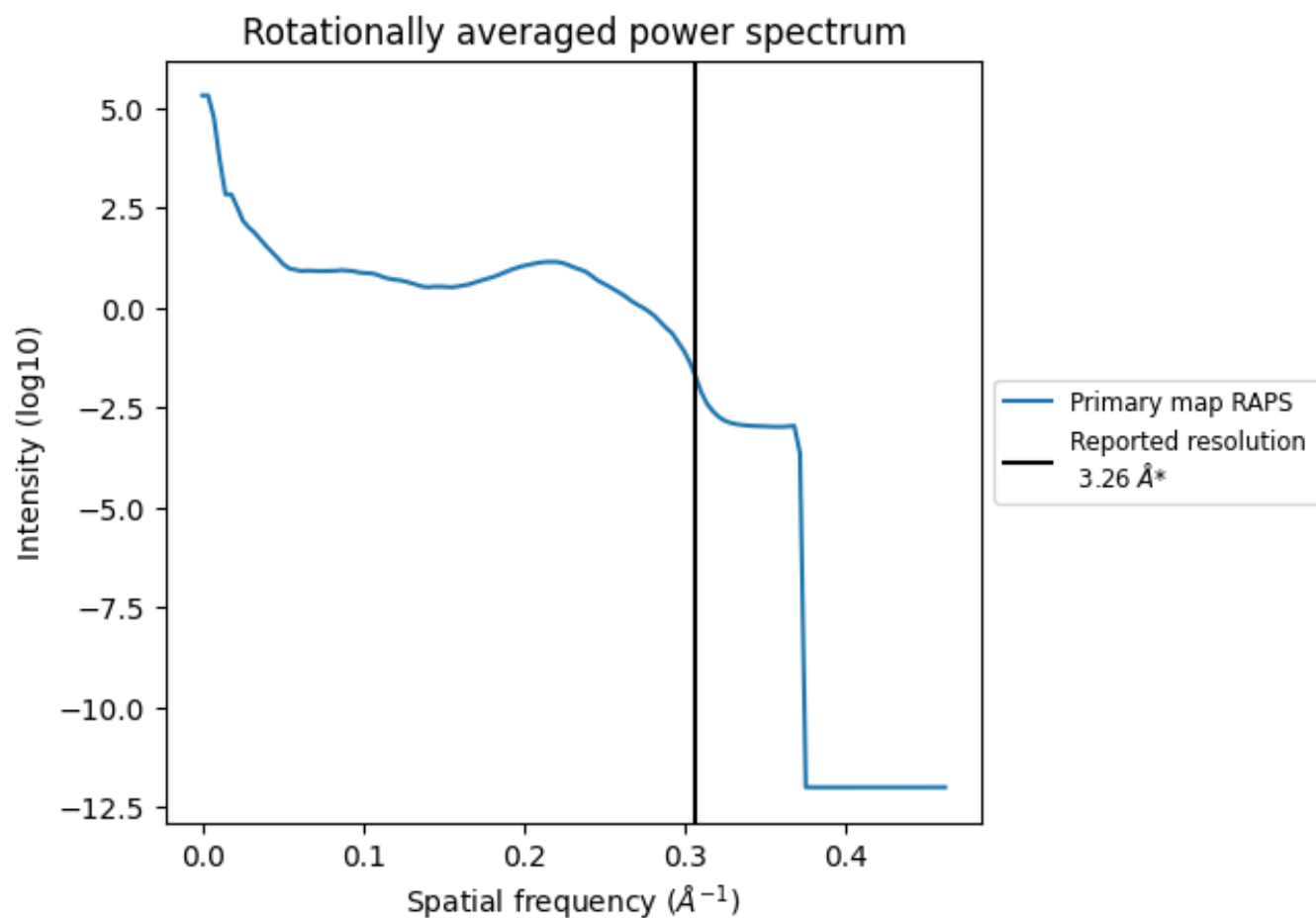
7.2 Volume estimate [i](#)



The volume at the recommended contour level is 209 nm³; this corresponds to an approximate mass of 189 kDa.

The volume estimate graph shows how the enclosed volume varies with the contour level. The recommended contour level is shown as a vertical line and the intersection between the line and the curve gives the volume of the enclosed surface at the given level.

7.3 Rotationally averaged power spectrum [i](#)



*Reported resolution corresponds to spatial frequency of 0.307 Å⁻¹

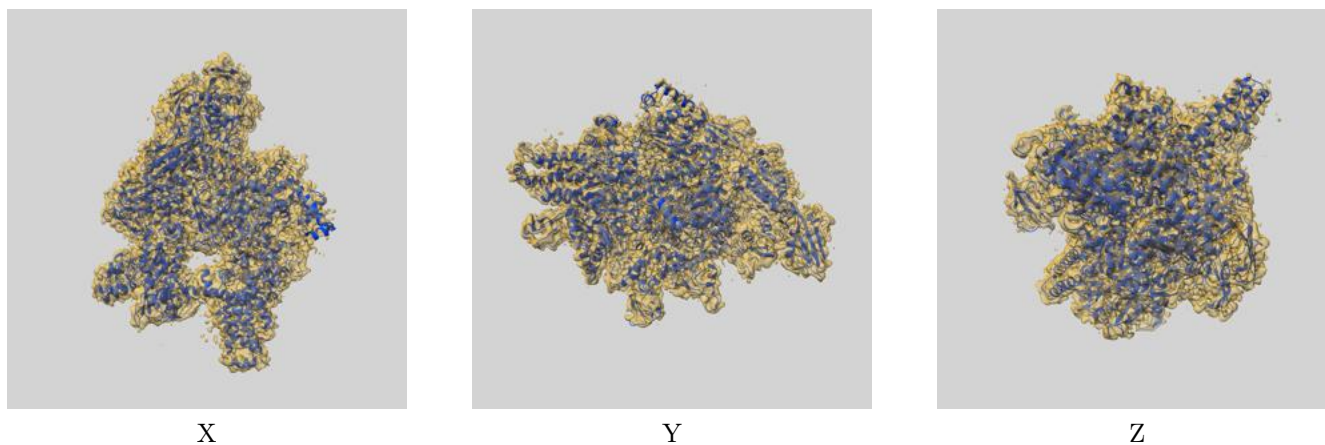
8 Fourier-Shell correlation

This section was not generated. No FSC curve or half-maps provided.

9 Map-model fit [i](#)

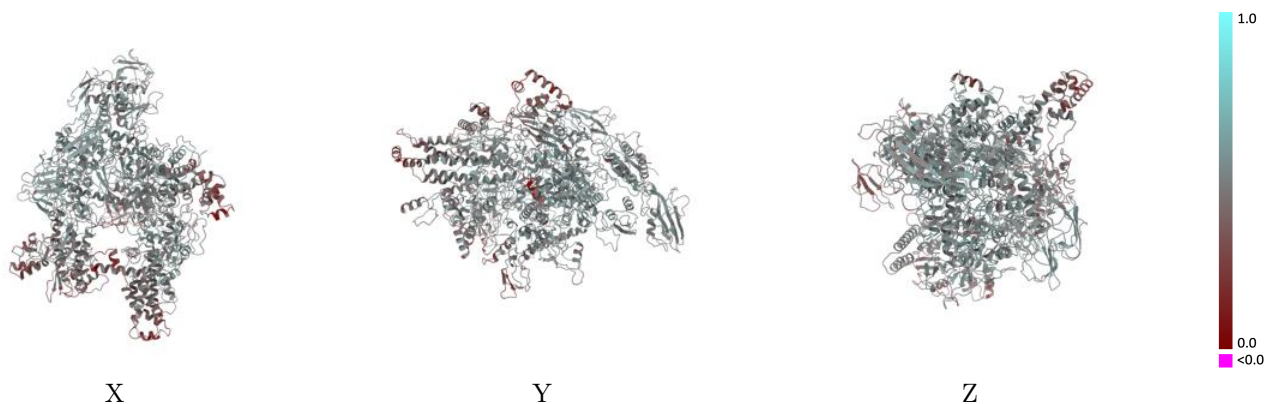
This section contains information regarding the fit between EMDB map EMD-23210 and PDB model 7L7B. Per-residue inclusion information can be found in section 3 on page 6.

9.1 Map-model overlay [i](#)



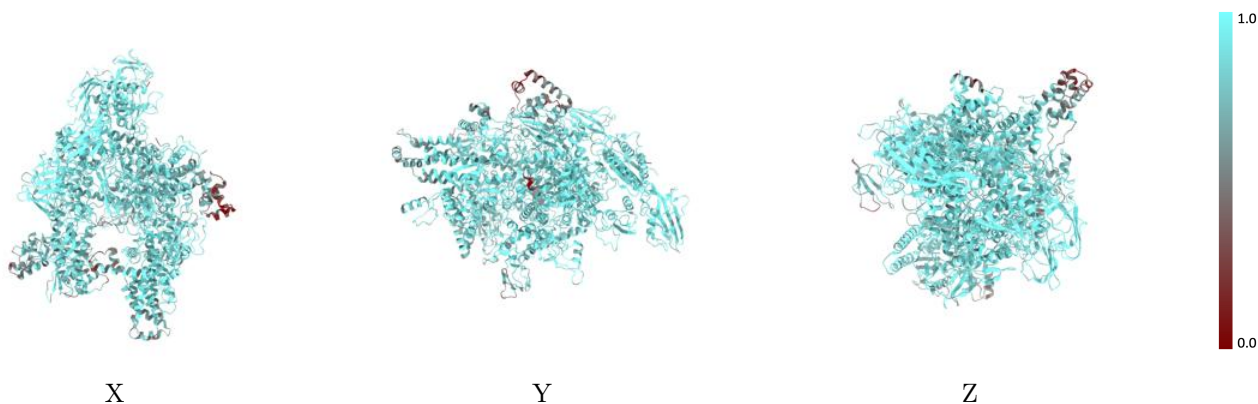
The images above show the 3D surface view of the map at the recommended contour level 0.4 at 50% transparency in yellow overlaid with a ribbon representation of the model coloured in blue. These images allow for the visual assessment of the quality of fit between the atomic model and the map.

9.2 Q-score mapped to coordinate model [i](#)



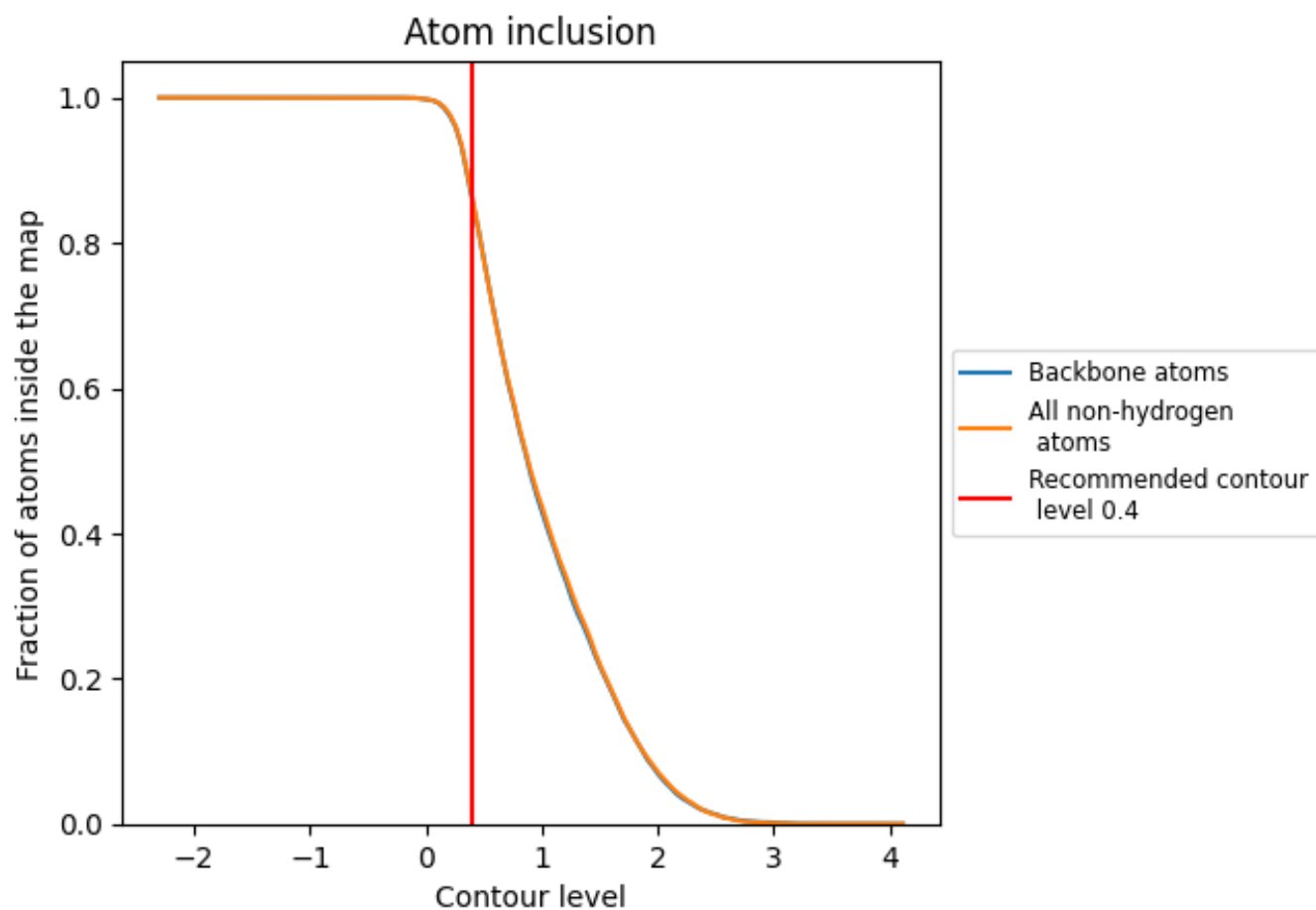
The images above show the model with each residue coloured according to its Q-score. This shows their resolvability in the map with higher Q-score values reflecting better resolvability. Please note: Q-score is calculating the resolvability of atoms, and thus high values are only expected at resolutions at which atoms can be resolved. Low Q-score values may therefore be expected for many entries.

9.3 Atom inclusion mapped to coordinate model [i](#)



The images above show the model with each residue coloured according to its atom inclusion. This shows to what extent they are inside the map at the recommended contour level (0.4).



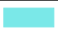











9.4 Atom inclusion [i](#)



At the recommended contour level, 86% of all backbone atoms, 86% of all non-hydrogen atoms, are inside the map.

9.5 Map-model fit summary

The table lists the average atom inclusion at the recommended contour level (0.4) and Q-score for the entire model and for each chain.

Chain	Atom inclusion	Q-score
All	 0.8637	 0.4830
A	 0.9124	 0.5090
B	 0.8885	 0.4940
C	 0.8704	 0.4820
D	 0.8990	 0.5030
E	 0.8257	 0.4700
F	 0.6956	 0.3850

