



Full wwPDB X-ray Structure Validation Report ⓘ

May 26, 2020 – 11:25 pm BST

PDB ID : 4L95
Title : Crystal structure of gamma glutamyl hydrolase (H218N) from zebrafish
Authors : Chuankhayan, P.; Kao, T.-T.; Chen, C.-J.; Fu, T.-F.
Deposited on : 2013-06-18
Resolution : 2.34 Å(reported)

This is a Full wwPDB X-ray Structure Validation Report for a publicly released PDB entry.

We welcome your comments at validation@mail.wwpdb.org

A user guide is available at

<https://www.wwpdb.org/validation/2017/XrayValidationReportHelp>

with specific help available everywhere you see the ⓘ symbol.

The following versions of software and data (see [references ⓘ](#)) were used in the production of this report:

MolProbity : 4.02b-467
Mogul : 1.8.5 (274361), CSD as541be (2020)
Xtriage (Phenix) : 1.13
EDS : 2.11
Percentile statistics : 20191225.v01 (using entries in the PDB archive December 25th 2019)
Refmac : 5.8.0158
CCP4 : 7.0.044 (Gargrove)
Ideal geometry (proteins) : Engh & Huber (2001)
Ideal geometry (DNA, RNA) : Parkinson et al. (1996)
Validation Pipeline (wwPDB-VP) : 2.11

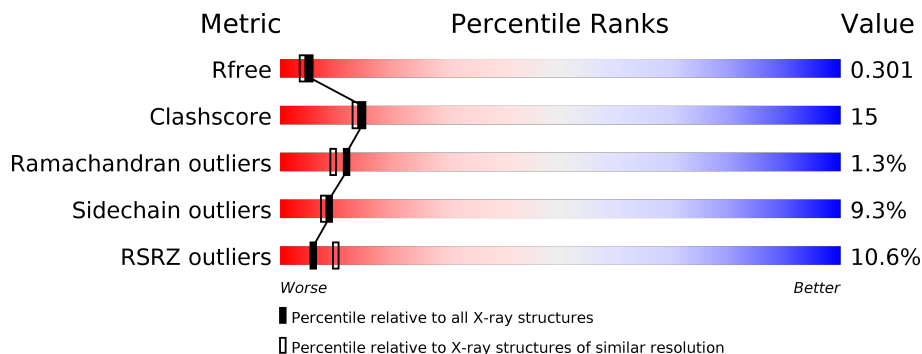
1 Overall quality at a glance i

The following experimental techniques were used to determine the structure:

X-RAY DIFFRACTION

The reported resolution of this entry is 2.34 Å.

Percentile scores (ranging between 0-100) for global validation metrics of the entry are shown in the following graphic. The table shows the number of entries on which the scores are based.



Metric	Whole archive (#Entries)	Similar resolution (#Entries, resolution range(Å))
R_{free}	130704	2096 (2.36-2.32)
Clashscore	141614	2193 (2.36-2.32)
Ramachandran outliers	138981	2159 (2.36-2.32)
Sidechain outliers	138945	2160 (2.36-2.32)
RSRZ outliers	127900	2067 (2.36-2.32)

The table below summarises the geometric issues observed across the polymeric chains and their fit to the electron density. The red, orange, yellow and green segments on the lower bar indicate the fraction of residues that contain outliers for ≥ 3 , 2, 1 and 0 types of geometric quality criteria respectively. A grey segment represents the fraction of residues that are not modelled. The numeric value for each fraction is indicated below the corresponding segment, with a dot representing fractions $\leq 5\%$. The upper red bar (where present) indicates the fraction of residues that have poor fit to the electron density. The numeric value is given above the bar.

Mol	Chain	Length	Quality of chain
1	C	312	<div style="display: flex; align-items: center;"> <div style="width: 5%; height: 10px; background-color: red; margin-right: 5px;"></div> <div style="width: 70%; height: 10px; background-color: green; margin-right: 5px;"></div> <div style="width: 18%; height: 10px; background-color: yellow; margin-right: 5px;"></div> <div style="width: 8%; height: 10px; background-color: orange; margin-right: 5px;"></div> <div style="width: 8%; height: 10px; background-color: grey;"></div> </div> <p style="margin-left: 5px;">5% 70% 18% • 8%</p>
1	E	312	<div style="display: flex; align-items: center;"> <div style="width: 9%; height: 10px; background-color: red; margin-right: 5px;"></div> <div style="width: 71%; height: 10px; background-color: green; margin-right: 5px;"></div> <div style="width: 18%; height: 10px; background-color: yellow; margin-right: 5px;"></div> <div style="width: 8%; height: 10px; background-color: orange; margin-right: 5px;"></div> <div style="width: 8%; height: 10px; background-color: grey;"></div> </div> <p style="margin-left: 5px;">9% 71% 18% • 8%</p>
1	F	312	<div style="display: flex; align-items: center;"> <div style="width: 5%; height: 10px; background-color: red; margin-right: 5px;"></div> <div style="width: 69%; height: 10px; background-color: green; margin-right: 5px;"></div> <div style="width: 20%; height: 10px; background-color: yellow; margin-right: 5px;"></div> <div style="width: 8%; height: 10px; background-color: orange; margin-right: 5px;"></div> <div style="width: 8%; height: 10px; background-color: grey;"></div> </div> <p style="margin-left: 5px;">5% 69% 20% • 8%</p>
1	G	312	<div style="display: flex; align-items: center;"> <div style="width: 8%; height: 10px; background-color: red; margin-right: 5px;"></div> <div style="width: 60%; height: 10px; background-color: green; margin-right: 5px;"></div> <div style="width: 27%; height: 10px; background-color: yellow; margin-right: 5px;"></div> <div style="width: 8%; height: 10px; background-color: orange; margin-right: 5px;"></div> <div style="width: 8%; height: 10px; background-color: grey;"></div> </div> <p style="margin-left: 5px;">8% 60% 27% • 8%</p>
1	K	312	<div style="display: flex; align-items: center;"> <div style="width: 13%; height: 10px; background-color: red; margin-right: 5px;"></div> <div style="width: 54%; height: 10px; background-color: green; margin-right: 5px;"></div> <div style="width: 34%; height: 10px; background-color: yellow; margin-right: 5px;"></div> <div style="width: 8%; height: 10px; background-color: orange; margin-right: 5px;"></div> <div style="width: 8%; height: 10px; background-color: grey;"></div> </div> <p style="margin-left: 5px;">13% 54% 34% • 8%</p>
1	M	312	<div style="display: flex; align-items: center;"> <div style="width: 17%; height: 10px; background-color: red; margin-right: 5px;"></div> <div style="width: 52%; height: 10px; background-color: green; margin-right: 5px;"></div> <div style="width: 34%; height: 10px; background-color: yellow; margin-right: 5px;"></div> <div style="width: 6%; height: 10px; background-color: orange; margin-right: 5px;"></div> <div style="width: 8%; height: 10px; background-color: grey;"></div> </div> <p style="margin-left: 5px;">17% 52% 34% 6% 8%</p>

2 Entry composition

There are 3 unique types of molecules in this entry. The entry contains 14068 atoms, of which 0 are hydrogens and 0 are deuteriums.

In the tables below, the ZeroOcc column contains the number of atoms modelled with zero occupancy, the AltConf column contains the number of residues with at least one atom in alternate conformation and the Trace column contains the number of residues modelled with at most 2 atoms.

- Molecule 1 is a protein called Gamma-glutamyl hydrolase.

Mol	Chain	Residues	Atoms					ZeroOcc	AltConf	Trace
			Total	C	N	O	S			
1	E	287	2307	1490	369	443	5	0	0	0
1	F	287	2307	1490	369	443	5	0	0	0
1	C	287	2307	1490	369	443	5	0	0	0
1	G	287	2307	1490	369	443	5	0	0	0
1	K	287	2307	1490	369	443	5	0	0	0
1	M	287	2307	1490	369	443	5	0	0	0

There are 6 discrepancies between the modelled and reference sequences:

Chain	Residue	Modelled	Actual	Comment	Reference
E	218	ASN	HIS	ENGINEERED MUTATION	UNP Q6NY42
F	218	ASN	HIS	ENGINEERED MUTATION	UNP Q6NY42
C	218	ASN	HIS	ENGINEERED MUTATION	UNP Q6NY42
G	218	ASN	HIS	ENGINEERED MUTATION	UNP Q6NY42
K	218	ASN	HIS	ENGINEERED MUTATION	UNP Q6NY42
M	218	ASN	HIS	ENGINEERED MUTATION	UNP Q6NY42

- Molecule 2 is GLYCEROL (three-letter code: GOL) (formula: C₃H₈O₃).



Mol	Chain	Residues	Atoms	ZeroOcc	AltConf
2	C	1	Total C O 6 3 3	0	0
2	G	1	Total C O 6 3 3	0	0
2	K	1	Total C O 6 3 3	0	0

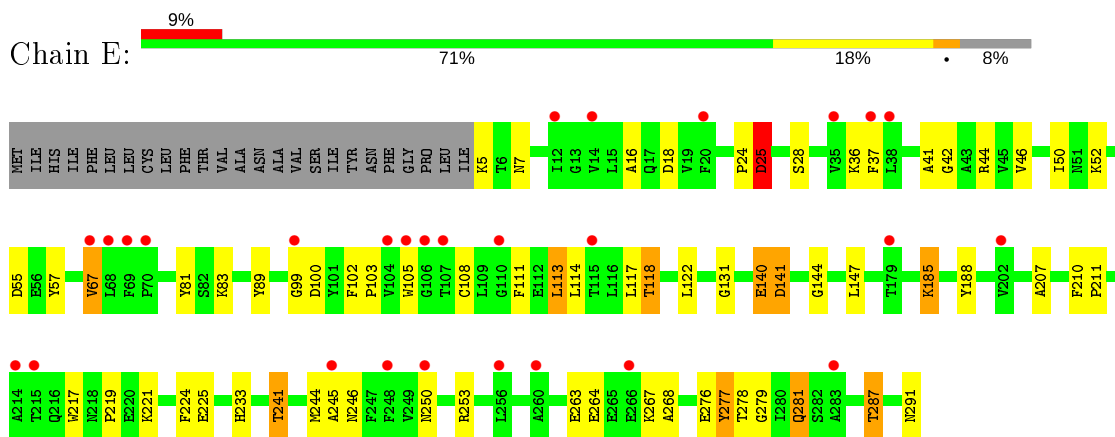
- Molecule 3 is water.

Mol	Chain	Residues	Atoms	ZeroOcc	AltConf
3	E	43	Total O 43 43	0	0
3	F	39	Total O 39 39	0	0
3	C	63	Total O 63 63	0	0
3	G	40	Total O 40 40	0	0
3	K	11	Total O 11 11	0	0
3	M	12	Total O 12 12	0	0

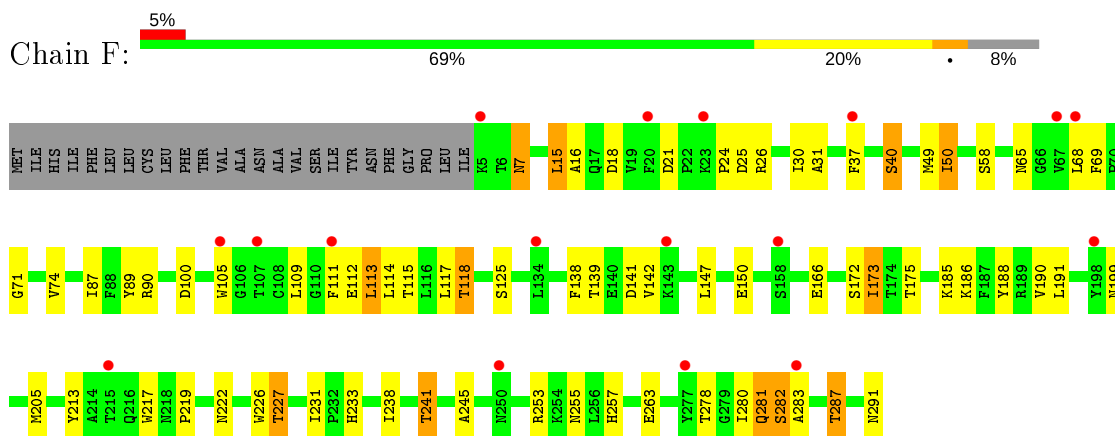
3 Residue-property plots [i](#)

These plots are drawn for all protein, RNA and DNA chains in the entry. The first graphic for a chain summarises the proportions of the various outlier classes displayed in the second graphic. The second graphic shows the sequence view annotated by issues in geometry and electron density. Residues are color-coded according to the number of geometric quality criteria for which they contain at least one outlier: green = 0, yellow = 1, orange = 2 and red = 3 or more. A red dot above a residue indicates a poor fit to the electron density ($RSRZ > 2$). Stretches of 2 or more consecutive residues without any outlier are shown as a green connector. Residues present in the sample, but not in the model, are shown in grey.

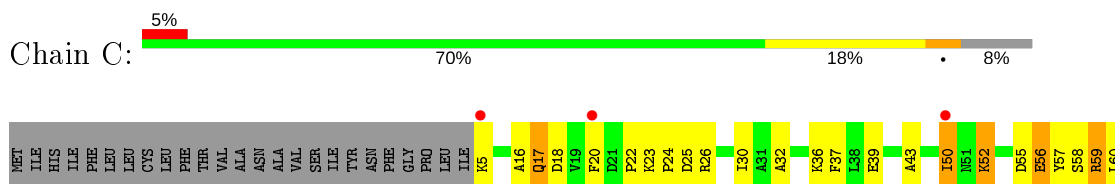
- Molecule 1: Gamma-glutamyl hydrolase

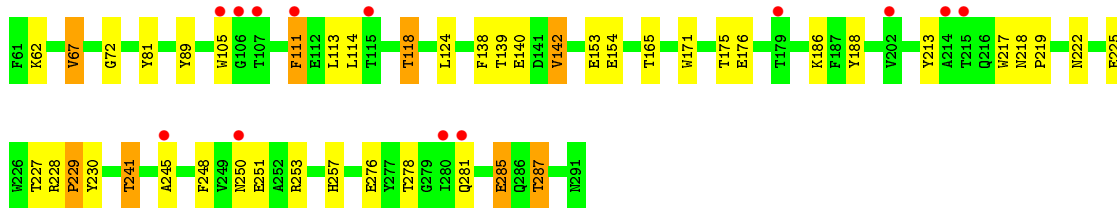


- Molecule 1: Gamma-glutamyl hydrolase

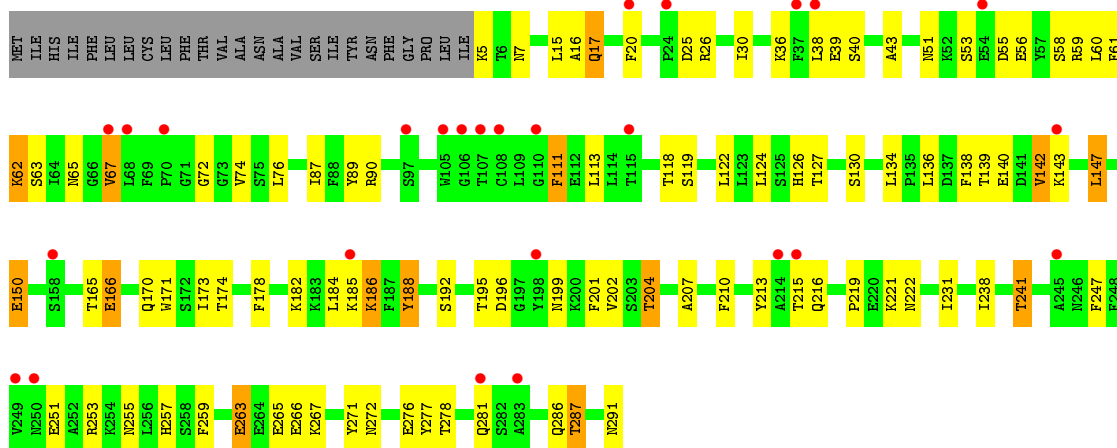


- Molecule 1: Gamma-glutamyl hydrolase

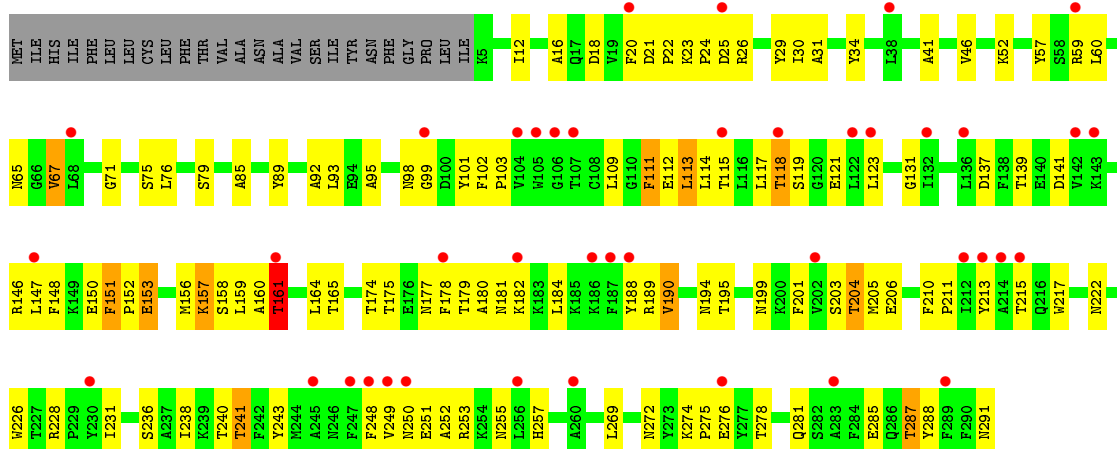




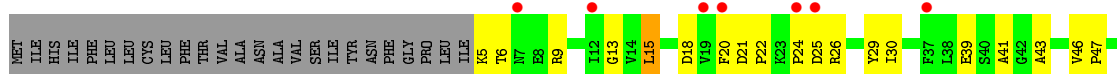
• Molecule 1: Gamma-glutamyl hydrolase

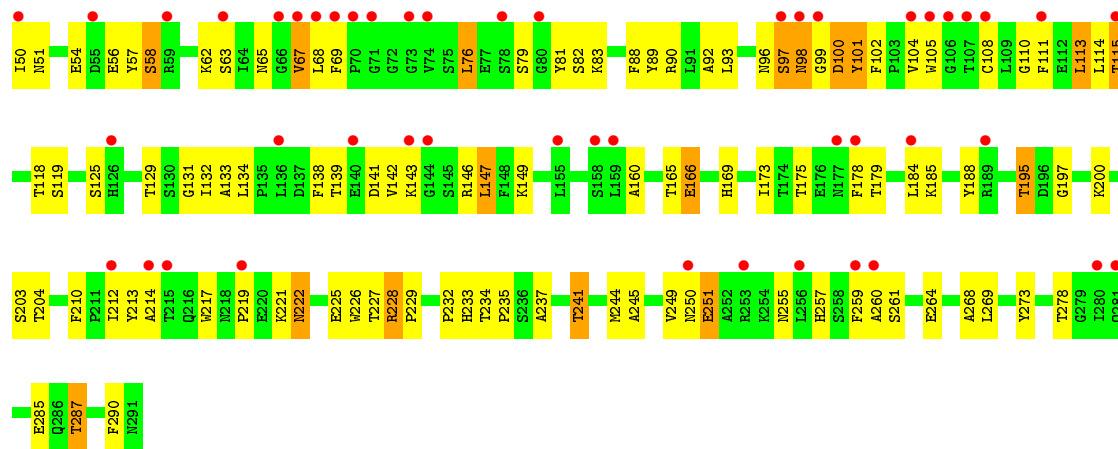


• Molecule 1: Gamma-glutamyl hydrolase



• Molecule 1: Gamma-glutamyl hydrolase





4 Data and refinement statistics

Property	Value	Source
Space group	C 1 2 1	Depositor
Cell constants a, b, c, α , β , γ	226.50Å 61.34Å 156.96Å 90.00° 101.37° 90.00°	Depositor
Resolution (Å)	29.76 – 2.34 29.76 – 2.34	Depositor EDS
% Data completeness (in resolution range)	98.2 (29.76-2.34) 98.2 (29.76-2.34)	Depositor EDS
R_{merge}	(Not available)	Depositor
R_{sym}	(Not available)	Depositor
$\langle I/\sigma(I) \rangle$ ¹	2.87 (at 2.34Å)	Xtrriage
Refinement program	REFMAC 5.5.0109	Depositor
R, R_{free}	0.239 , 0.304 0.239 , 0.301	Depositor DCC
R_{free} test set	4413 reflections (5.00%)	wwPDB-VP
Wilson B-factor (Å ²)	43.5	Xtrriage
Anisotropy	0.089	Xtrriage
Bulk solvent k_{sol} (e/Å ³), B_{sol} (Å ²)	0.29 , 38.3	EDS
L-test for twinning ²	$\langle L \rangle = 0.50$, $\langle L^2 \rangle = 0.33$	Xtrriage
Estimated twinning fraction	No twinning to report.	Xtrriage
F_o, F_c correlation	0.93	EDS
Total number of atoms	14068	wwPDB-VP
Average B, all atoms (Å ²)	50.0	wwPDB-VP

Xtrriage's analysis on translational NCS is as follows: *The largest off-origin peak in the Patterson function is 3.64% of the height of the origin peak. No significant pseudotranslation is detected.*

¹Intensities estimated from amplitudes.

²Theoretical values of $\langle |L| \rangle$, $\langle L^2 \rangle$ for acentric reflections are 0.5, 0.333 respectively for untwinned datasets, and 0.375, 0.2 for perfectly twinned datasets.

5 Model quality [i](#)

5.1 Standard geometry [i](#)

Bond lengths and bond angles in the following residue types are not validated in this section: GOL

The Z score for a bond length (or angle) is the number of standard deviations the observed value is removed from the expected value. A bond length (or angle) with $|Z| > 5$ is considered an outlier worth inspection. RMSZ is the root-mean-square of all Z scores of the bond lengths (or angles).

Mol	Chain	Bond lengths		Bond angles	
		RMSZ	# Z >5	RMSZ	# Z >5
1	C	1.08	2/2371 (0.1%)	0.91	4/3217 (0.1%)
1	E	0.90	2/2371 (0.1%)	0.85	3/3217 (0.1%)
1	F	0.92	1/2371 (0.0%)	0.83	0/3217
1	G	0.97	2/2371 (0.1%)	0.86	2/3217 (0.1%)
1	K	0.73	0/2371	0.71	0/3217
1	M	0.75	0/2371	0.76	0/3217
All	All	0.90	7/14226 (0.0%)	0.82	9/19302 (0.0%)

Chiral center outliers are detected by calculating the chiral volume of a chiral center and verifying if the center is modelled as a planar moiety or with the opposite hand. A planarity outlier is detected by checking planarity of atoms in a peptide group, atoms in a mainchain group or atoms of a sidechain that are expected to be planar.

Mol	Chain	#Chirality outliers	#Planarity outliers
1	E	0	2
1	M	0	1
All	All	0	3

All (7) bond length outliers are listed below:

Mol	Chain	Res	Type	Atoms	Z	Observed(Å)	Ideal(Å)
1	E	25	ASP	C-N	7.65	1.51	1.34
1	E	291	ASN	C-OXT	-6.12	1.11	1.23
1	G	150	GLU	CG-CD	5.35	1.59	1.51
1	F	150	GLU	CG-CD	5.28	1.59	1.51
1	C	153	GLU	CG-CD	5.22	1.59	1.51
1	G	188	TYR	CD2-CE2	-5.09	1.31	1.39
1	C	57	TYR	CD2-CE2	5.06	1.47	1.39

All (9) bond angle outliers are listed below:

Mol	Chain	Res	Type	Atoms	Z	Observed(°)	Ideal(°)
1	E	25	ASP	O-C-N	-10.59	105.76	122.70
1	E	25	ASP	C-N-CA	8.95	144.07	121.70
1	C	55	ASP	CB-CG-OD1	6.48	124.13	118.30
1	G	67	VAL	CB-CA-C	-6.43	99.18	111.40
1	E	25	ASP	CA-C-N	6.41	131.30	117.20
1	C	67	VAL	CB-CA-C	-6.02	99.97	111.40
1	G	238	ILE	CG1-CB-CG2	-5.91	98.41	111.40
1	C	52	LYS	CD-CE-NZ	-5.39	99.31	111.70
1	C	50	ILE	C-N-CA	-5.01	109.19	121.70

There are no chirality outliers.

All (3) planarity outliers are listed below:

Mol	Chain	Res	Type	Group
1	E	144	GLY	Peptide
1	E	25	ASP	Mainchain
1	M	228	ARG	Peptide

5.2 Too-close contacts [i](#)

In the following table, the Non-H and H(model) columns list the number of non-hydrogen atoms and hydrogen atoms in the chain respectively. The H(added) column lists the number of hydrogen atoms added and optimized by MolProbity. The Clashes column lists the number of clashes within the asymmetric unit, whereas Symm-Clashes lists symmetry related clashes.

Mol	Chain	Non-H	H(model)	H(added)	Clashes	Symm-Clashes
1	C	2307	0	2228	50	0
1	E	2307	0	2228	51	0
1	F	2307	0	2228	60	0
1	G	2307	0	2228	78	0
1	K	2307	0	2228	86	0
1	M	2307	0	2228	105	0
2	C	6	0	8	0	0
2	G	6	0	8	0	0
2	K	6	0	8	0	0
3	C	63	0	0	2	0
3	E	43	0	0	0	0
3	F	39	0	0	1	0
3	G	40	0	0	2	0
3	K	11	0	0	6	0
3	M	12	0	0	1	0
All	All	14068	0	13392	418	0

The all-atom clashscore is defined as the number of clashes found per 1000 atoms (including hydrogen atoms). The all-atom clashscore for this structure is 15.

All (418) close contacts within the same asymmetric unit are listed below, sorted by their clash magnitude.

Atom-1	Atom-2	Interatomic distance (Å)	Clash overlap (Å)
1:K:123:LEU:HG	3:K:407:HOH:O	1.35	1.22
1:G:51:ASN:HA	3:G:423:HOH:O	1.45	1.15
1:G:89:TYR:OH	1:G:118:THR:HG22	1.54	1.08
1:E:140:GLU:OE2	1:E:140:GLU:HA	1.60	1.02
1:K:137:ASP:HA	3:K:404:HOH:O	1.62	0.99
1:G:195:THR:HG23	1:M:197:GLY:HA2	1.44	0.99
1:M:118:THR:HG21	1:M:188:TYR:HE2	1.25	0.98
1:F:25:ASP:H	1:F:291:ASN:HD22	1.14	0.92
1:F:255:ASN:ND2	1:F:257:HIS:H	1.69	0.89
1:C:139:THR:O	1:C:142:VAL:HG23	1.71	0.88
1:F:222:ASN:HB2	1:F:241:THR:HG21	1.54	0.87
1:F:222:ASN:HB2	1:F:241:THR:CG2	2.05	0.86
1:E:118:THR:HG21	1:E:188:TYR:OH	1.75	0.86
1:M:118:THR:HG21	1:M:188:TYR:CE2	2.13	0.84
1:E:24:PRO:O	1:E:25:ASP:HB2	1.76	0.84
1:C:222:ASN:HB2	1:C:241:THR:CG2	2.08	0.83
1:C:56:GLU:OE2	1:C:59:ARG:HD3	1.79	0.82
1:G:65:ASN:HD22	1:G:255:ASN:HD22	1.27	0.81
1:M:138:PHE:HE1	1:M:160:ALA:HB2	1.46	0.80
1:C:20:PHE:O	1:C:22:PRO:HD3	1.82	0.80
1:E:50:ILE:HD11	1:E:81:TYR:HA	1.64	0.78
1:K:111:PHE:CD2	1:K:111:PHE:C	2.57	0.77
1:K:24:PRO:O	1:K:25:ASP:HB2	1.82	0.77
1:M:115:THR:HA	1:M:184:LEU:HD21	1.66	0.77
1:E:89:TYR:OH	1:E:118:THR:HG22	1.85	0.76
1:C:139:THR:O	1:C:142:VAL:CG2	2.32	0.76
1:M:65:ASN:HD22	1:M:255:ASN:HD22	1.34	0.76
1:M:24:PRO:O	1:M:25:ASP:HB2	1.86	0.75
1:G:7:ASN:O	1:G:253:ARG:HG2	1.85	0.75
1:F:118:THR:HG21	1:F:188:TYR:OH	1.86	0.75
1:M:15:LEU:HD12	1:M:69:PHE:CD2	2.22	0.74
1:M:89:TYR:O	1:M:93:LEU:HG	1.86	0.74
1:C:16:ALA:O	1:C:50:ILE:HD13	1.88	0.74
1:E:118:THR:CG2	1:E:188:TYR:OH	2.35	0.74
1:F:199:ASN:HA	3:F:404:HOH:O	1.86	0.73
1:K:165:THR:HB	1:K:217:TRP:CE3	2.23	0.73
1:F:255:ASN:HD21	1:F:257:HIS:CG	2.07	0.72

Continued on next page...

Continued from previous page...

Atom-1	Atom-2	Interatomic distance (Å)	Clash overlap (Å)
1:C:118:THR:HG21	1:C:188:TYR:OH	1.90	0.71
1:K:255:ASN:OD1	1:K:257:HIS:CD2	2.43	0.71
1:K:111:PHE:HD2	1:K:112:GLU:N	1.87	0.71
1:M:138:PHE:CE1	1:M:160:ALA:HB2	2.26	0.70
1:G:58:SER:O	1:G:62:LYS:HG3	1.89	0.70
1:K:189:ARG:O	1:K:205:MET:HB2	1.91	0.70
1:M:119:SER:HB3	1:M:184:LEU:HG	1.73	0.70
1:E:263:GLU:O	1:E:267:LYS:HD3	1.90	0.70
1:M:165:THR:HG22	1:M:217:TRP:CE3	2.28	0.69
1:M:259:PHE:HD2	1:M:264:GLU:HG3	1.58	0.69
1:M:41:ALA:HB2	1:M:245:ALA:HB1	1.73	0.69
1:M:30:ILE:HG13	1:M:290:PHE:HE1	1.57	0.69
1:K:121:GLU:C	3:K:407:HOH:O	2.31	0.69
1:M:67:VAL:HG23	1:M:104:VAL:HG22	1.75	0.68
1:G:124:LEU:HD23	1:G:173:ILE:HD11	1.75	0.68
1:M:13:GLY:HA2	1:M:46:VAL:O	1.94	0.68
1:G:124:LEU:HD23	1:G:173:ILE:CD1	2.24	0.67
1:K:46:VAL:HG11	1:K:60:LEU:HD11	1.77	0.67
1:C:222:ASN:HB2	1:C:241:THR:HG21	1.73	0.67
1:C:56:GLU:OE2	1:C:59:ARG:CD	2.42	0.67
1:M:166:GLU:HG2	1:M:221:LYS:HD2	1.75	0.67
1:G:259:PHE:CD1	1:G:265:GLU:HG3	2.29	0.67
1:E:42:GLY:HA3	1:F:238:ILE:HD13	1.76	0.66
1:M:54:GLU:CD	1:M:90:ARG:HH22	1.98	0.66
1:M:219:PRO:O	1:M:241:THR:HB	1.95	0.66
1:M:255:ASN:HD21	1:M:257:HIS:HB2	1.60	0.66
1:K:85:ALA:HB3	1:K:113:LEU:HD11	1.78	0.66
1:K:23:LYS:O	1:K:26:ARG:N	2.29	0.65
1:K:25:ASP:O	1:K:26:ARG:HG2	1.96	0.65
1:M:100:ASP:OD1	1:M:101:TYR:N	2.29	0.65
1:G:65:ASN:HD22	1:G:255:ASN:ND2	1.94	0.65
1:K:111:PHE:HD2	1:K:111:PHE:C	1.99	0.65
1:G:56:GLU:HG3	1:G:59:ARG:NH2	2.12	0.65
1:K:204:THR:HG23	1:K:215:THR:HG22	1.78	0.65
1:E:253:ARG:NH2	1:F:238:ILE:CD1	2.59	0.65
1:C:138:PHE:HB3	1:C:142:VAL:HG21	1.79	0.65
1:G:195:THR:CG2	1:M:197:GLY:HA2	2.25	0.65
1:F:68:LEU:C	1:F:68:LEU:HD23	2.18	0.64
1:G:204:THR:HG23	1:G:215:THR:HG22	1.78	0.64
1:F:227:THR:HG21	1:F:282:SER:O	1.97	0.64
1:F:68:LEU:HD23	1:F:69:PHE:N	2.13	0.63

Continued on next page...

Continued from previous page...

Atom-1	Atom-2	Interatomic distance (Å)	Clash overlap (Å)
1:G:136:LEU:HD22	1:G:192:SER:OG	1.98	0.63
1:F:15:LEU:N	1:F:15:LEU:HD23	2.13	0.63
1:F:18:ASP:CG	1:F:50:ILE:HD11	2.19	0.63
1:E:46:VAL:HG13	1:E:268:ALA:O	1.99	0.63
1:G:62:LYS:O	1:G:257:HIS:HB3	1.98	0.63
1:M:67:VAL:HG22	1:M:102:PHE:CE2	2.33	0.62
1:G:56:GLU:HA	1:G:59:ARG:CZ	2.29	0.62
1:K:278:THR:OG1	1:K:287:THR:HG23	1.99	0.62
1:M:67:VAL:HG22	1:M:102:PHE:HE2	1.65	0.62
1:K:29:TYR:HA	1:K:288:TYR:O	1.99	0.62
1:M:227:THR:O	1:M:228:ARG:HD3	1.98	0.62
1:G:39:GLU:HA	1:G:43:ALA:O	1.99	0.62
1:E:140:GLU:OE2	1:E:140:GLU:CA	2.39	0.61
1:E:44:ARG:HD3	1:F:226:TRP:CD1	2.35	0.61
1:F:65:ASN:HD22	1:F:255:ASN:HD22	1.47	0.61
1:M:65:ASN:ND2	1:M:255:ASN:HD22	1.97	0.61
1:G:138:PHE:CD2	1:G:142:VAL:HG11	2.36	0.61
1:M:41:ALA:HB3	1:M:249:VAL:HG21	1.83	0.61
1:E:278:THR:HA	1:E:281:GLN:HE22	1.66	0.60
1:K:71:GLY:HA2	1:K:109:LEU:HB3	1.82	0.60
1:C:250:ASN:ND2	1:C:253:ARG:HH11	1.99	0.60
1:M:227:THR:O	1:M:228:ARG:NH1	2.30	0.60
1:M:57:TYR:HD2	1:M:88:PHE:HE1	1.47	0.60
1:M:81:TYR:CE2	1:M:113:LEU:CD1	2.86	0.59
1:M:278:THR:OG1	1:M:287:THR:HG23	2.01	0.59
1:F:222:ASN:HB2	1:F:241:THR:HG22	1.85	0.59
1:G:16:ALA:HA	1:G:30:ILE:HG13	1.85	0.59
1:F:49:MET:CE	1:F:49:MET:HA	2.33	0.58
1:M:81:TYR:CE2	1:M:113:LEU:HD12	2.37	0.58
1:C:16:ALA:O	1:C:50:ILE:CD1	2.51	0.58
1:K:157:LYS:O	1:K:159:LEU:N	2.36	0.58
1:C:165:THR:HB	1:C:217:TRP:CE3	2.37	0.58
1:C:50:ILE:HD11	1:C:81:TYR:HA	1.84	0.58
1:F:24:PRO:C	1:F:26:ARG:H	2.07	0.58
1:M:62:LYS:O	1:M:257:HIS:HB3	2.03	0.58
1:E:114:LEU:O	1:E:118:THR:HG23	2.04	0.58
1:M:222:ASN:HB3	1:M:232:PRO:O	2.04	0.58
1:G:56:GLU:CG	1:G:59:ARG:HH22	2.16	0.57
1:M:147:LEU:HD12	1:M:213:TYR:HD2	1.69	0.57
1:K:160:ALA:O	1:K:161:THR:HG23	2.04	0.57
1:M:92:ALA:O	1:M:96:ASN:HB2	2.05	0.57

Continued on next page...

Continued from previous page...

Atom-1	Atom-2	Interatomic distance (Å)	Clash overlap (Å)
1:F:255:ASN:HD21	1:F:257:HIS:H	1.51	0.57
1:G:173:ILE:O	1:G:201:PHE:HB2	2.03	0.57
1:K:189:ARG:HG2	1:K:190:VAL:N	2.20	0.57
1:C:26:ARG:NH2	1:C:276:GLU:OE1	2.34	0.57
1:E:50:ILE:O	1:E:57:TYR:OH	2.21	0.57
1:C:285:GLU:HG3	1:G:271:TYR:CE1	2.39	0.57
1:M:195:THR:HG23	1:M:197:GLY:H	1.70	0.56
1:K:189:ARG:HG2	1:K:190:VAL:H	1.70	0.56
1:C:140:GLU:HG3	3:C:415:HOH:O	2.05	0.56
1:F:100:ASP:OD2	1:F:257:HIS:NE2	2.35	0.56
1:F:87:ILE:HD13	1:F:90:ARG:HH12	1.71	0.56
1:G:222:ASN:HB2	1:G:241:THR:HG22	1.88	0.56
1:K:118:THR:HG21	1:K:188:TYR:OH	2.06	0.56
1:M:81:TYR:HE2	1:M:113:LEU:HD12	1.71	0.56
1:M:261:SER:O	1:M:264:GLU:HG2	2.06	0.56
1:F:37:PHE:CE2	1:F:245:ALA:HB2	2.42	0.55
1:G:278:THR:OG1	1:G:287:THR:HG23	2.06	0.55
1:M:249:VAL:C	1:M:251:GLU:H	2.10	0.55
1:G:56:GLU:CG	1:G:59:ARG:NH2	2.70	0.55
1:K:103:PRO:HA	1:K:211:PRO:HB2	1.88	0.55
1:C:17:GLN:OE1	1:C:72:GLY:HA3	2.07	0.55
1:K:151:PHE:HB2	1:K:156:MET:HG2	1.88	0.54
1:K:178:PHE:C	1:K:180:ALA:H	2.09	0.54
1:M:30:ILE:HG13	1:M:290:PHE:CE1	2.41	0.54
1:G:87:ILE:HD13	1:G:90:ARG:HH22	1.73	0.54
1:K:67:VAL:HG22	1:K:102:PHE:HE2	1.72	0.54
1:M:104:VAL:HB	1:M:212:ILE:HG12	1.89	0.54
1:F:231:ILE:HG22	1:F:233:HIS:CE1	2.43	0.54
1:K:226:TRP:HB2	1:K:285:GLU:OE1	2.08	0.54
1:M:41:ALA:CB	1:M:249:VAL:HG21	2.38	0.54
1:F:219:PRO:O	1:F:241:THR:HB	2.07	0.54
1:M:96:ASN:C	1:M:98:ASN:H	2.11	0.54
1:E:278:THR:OG1	1:E:287:THR:CG2	2.57	0.53
1:G:222:ASN:HB2	1:G:241:THR:CG2	2.38	0.53
1:G:26:ARG:HH21	1:G:276:GLU:CD	2.11	0.53
1:M:111:PHE:HD1	1:M:214:ALA:HB1	1.74	0.53
1:C:114:LEU:O	1:C:118:THR:HG23	2.08	0.53
1:M:138:PHE:HE1	1:M:160:ALA:CB	2.20	0.53
1:K:178:PHE:C	1:K:180:ALA:N	2.62	0.53
1:M:115:THR:CA	1:M:184:LEU:HD21	2.36	0.53
1:M:111:PHE:CD1	1:M:214:ALA:HB1	2.44	0.53

Continued on next page...

Continued from previous page...

Atom-1	Atom-2	Interatomic distance (Å)	Clash overlap (Å)
1:F:89:TYR:OH	1:F:118:THR:HG22	2.08	0.53
1:K:85:ALA:CB	1:K:113:LEU:CD1	2.87	0.53
1:E:118:THR:HG21	1:E:188:TYR:CZ	2.43	0.53
1:G:55:ASP:O	1:G:59:ARG:HG3	2.08	0.53
1:G:118:THR:HG21	1:G:188:TYR:OH	2.09	0.53
1:K:148:PHE:HA	1:K:151:PHE:CE1	2.44	0.53
1:K:159:LEU:HA	1:K:164:LEU:HD12	1.91	0.53
1:M:114:LEU:O	1:M:118:THR:HG22	2.09	0.53
1:C:24:PRO:O	1:C:25:ASP:HB2	2.09	0.52
1:C:59:ARG:HH11	1:C:59:ARG:CG	2.22	0.52
1:G:17:GLN:OE1	1:G:72:GLY:HA3	2.09	0.52
1:F:25:ASP:H	1:F:291:ASN:ND2	1.94	0.52
1:E:253:ARG:NH2	1:F:238:ILE:HD12	2.25	0.52
1:F:173:ILE:O	1:F:173:ILE:HG12	2.09	0.52
1:C:219:PRO:O	1:C:241:THR:HB	2.10	0.52
1:M:249:VAL:O	1:M:251:GLU:N	2.43	0.52
1:C:32:ALA:O	1:C:36:LYS:HG3	2.09	0.52
1:K:121:GLU:HB2	3:K:407:HOH:O	2.09	0.52
1:K:236:SER:O	1:K:240:THR:OG1	2.27	0.52
1:M:134:LEU:O	1:M:165:THR:OG1	2.20	0.52
1:G:173:ILE:HG22	1:G:174:THR:O	2.10	0.51
1:G:255:ASN:HD21	1:G:257:HIS:CG	2.28	0.51
1:M:146:ARG:NH2	1:M:210:PHE:O	2.42	0.51
1:M:98:ASN:O	1:M:100:ASP:N	2.43	0.51
1:C:218:ASN:ND2	3:C:419:HOH:O	2.43	0.51
1:F:278:THR:OG1	1:F:287:THR:CG2	2.58	0.51
1:G:56:GLU:HG2	1:G:59:ARG:HH22	1.76	0.51
1:F:278:THR:HG21	1:F:287:THR:HG23	1.93	0.51
1:F:115:THR:HG21	1:F:173:ILE:HD12	1.91	0.51
1:M:222:ASN:HD22	1:M:241:THR:HG22	1.76	0.51
1:C:39:GLU:HA	1:C:43:ALA:O	2.10	0.51
1:M:165:THR:HG22	1:M:217:TRP:CZ3	2.44	0.51
1:E:221:LYS:HG2	1:E:225:GLU:HG3	1.93	0.51
1:M:65:ASN:HA	1:M:255:ASN:ND2	2.26	0.51
1:G:255:ASN:ND2	1:G:257:HIS:H	2.09	0.50
1:M:90:ARG:HA	1:M:93:LEU:HD12	1.94	0.50
1:E:37:PHE:CE2	1:E:245:ALA:HB2	2.46	0.50
1:G:170:GLN:HB3	1:G:171:TRP:CD1	2.45	0.50
1:K:119:SER:HB3	1:K:184:LEU:HD21	1.93	0.50
1:F:112:GLU:O	1:F:115:THR:OG1	2.28	0.50
1:G:278:THR:OG1	1:G:287:THR:CG2	2.60	0.50

Continued on next page...

Continued from previous page...

Atom-1	Atom-2	Interatomic distance (Å)	Clash overlap (Å)
1:K:248:PHE:O	1:K:251:GLU:HB2	2.12	0.50
1:C:278:THR:OG1	1:C:287:THR:HG23	2.12	0.50
1:M:108:CYS:O	1:M:111:PHE:HB3	2.12	0.49
1:E:105:TRP:HH2	1:E:244:MET:HE3	1.76	0.49
1:F:114:LEU:O	1:F:118:THR:HG23	2.13	0.49
1:K:250:ASN:ND2	1:K:253:ARG:HH11	2.09	0.49
1:E:16:ALA:HB1	1:E:28:SER:HB2	1.93	0.49
1:F:139:THR:HG21	1:F:190:VAL:HG12	1.93	0.49
1:M:115:THR:HA	1:M:184:LEU:CD2	2.38	0.49
1:K:255:ASN:HD21	1:K:257:HIS:CD2	2.31	0.49
1:K:243:TYR:HD2	3:K:401:HOH:O	1.96	0.49
1:K:85:ALA:HB3	1:K:113:LEU:CD1	2.41	0.49
1:K:93:LEU:HA	1:K:210:PHE:CE1	2.47	0.49
1:G:53:SER:N	1:G:56:GLU:OE1	2.34	0.49
1:C:118:THR:CG2	1:C:188:TYR:OH	2.60	0.49
1:E:67:VAL:HG22	1:E:102:PHE:HE2	1.77	0.48
1:K:178:PHE:O	1:K:180:ALA:N	2.46	0.48
1:G:26:ARG:NH2	1:G:276:GLU:OE1	2.47	0.48
1:K:228:ARG:HB2	1:K:231:ILE:HD11	1.95	0.48
1:K:121:GLU:HB2	3:K:408:HOH:O	2.11	0.48
1:M:234:THR:H	1:M:237:ALA:HB3	1.78	0.48
1:G:178:PHE:CE1	1:G:184:LEU:HB3	2.49	0.48
1:K:31:ALA:HB3	1:K:34:TYR:CD1	2.48	0.48
1:C:225:GLU:HA	1:C:225:GLU:OE2	2.14	0.48
1:C:248:PHE:O	1:C:251:GLU:HB2	2.13	0.48
1:G:89:TYR:CZ	1:G:118:THR:HG22	2.45	0.48
1:K:139:THR:HB	1:K:141:ASP:H	1.78	0.48
1:K:93:LEU:HA	1:K:210:PHE:HE1	1.79	0.48
1:C:111:PHE:C	1:C:111:PHE:CD2	2.88	0.48
1:C:228:ARG:HG3	1:C:230:TYR:OH	2.13	0.47
1:F:255:ASN:HD21	1:F:257:HIS:CB	2.26	0.47
1:G:126:HIS:HE1	1:G:170:GLN:HG2	1.79	0.47
1:M:79:SER:O	1:M:82:SER:OG	2.31	0.47
1:G:278:THR:HG21	1:G:287:THR:HG23	1.96	0.47
1:E:44:ARG:HD3	1:F:226:TRP:CG	2.48	0.47
1:G:139:THR:O	1:G:142:VAL:HG22	2.14	0.47
1:K:181:ASN:HD22	1:K:182:LYS:N	2.12	0.47
1:K:195:THR:HA	1:K:199:ASN:O	2.14	0.47
1:C:16:ALA:HA	1:C:30:ILE:HG13	1.96	0.47
1:C:89:TYR:OH	1:C:118:THR:HB	2.13	0.47
1:F:118:THR:HG21	1:F:188:TYR:CZ	2.48	0.47

Continued on next page...

Continued from previous page...

Atom-1	Atom-2	Interatomic distance (Å)	Clash overlap (Å)
1:M:50:ILE:HG23	1:M:51:ASN:N	2.29	0.47
1:K:16:ALA:HA	1:K:30:ILE:CG1	2.45	0.47
1:M:57:TYR:CD2	1:M:88:PHE:HE1	2.31	0.47
1:F:111:PHE:HE1	1:F:205:MET:HG2	1.79	0.47
1:F:24:PRO:C	1:F:26:ARG:N	2.68	0.47
1:F:105:TRP:CE3	1:F:213:TYR:HB2	2.50	0.47
1:E:141:ASP:OD1	1:E:141:ASP:N	2.44	0.47
1:F:280:ILE:HB	1:F:281:GLN:HG2	1.97	0.47
1:G:36:LYS:NZ	1:G:286:GLN:NE2	2.63	0.47
1:E:225:GLU:O	1:E:233:HIS:HE1	1.98	0.47
1:E:100:ASP:C	1:E:100:ASP:OD1	2.52	0.47
1:E:278:THR:HG21	1:E:287:THR:HG23	1.97	0.47
1:M:129:THR:OG1	1:M:169:HIS:O	2.23	0.47
1:C:250:ASN:ND2	1:C:253:ARG:NH1	2.62	0.46
1:E:253:ARG:HH22	1:F:238:ILE:HD13	1.80	0.46
1:K:65:ASN:HB3	1:K:255:ASN:HB3	1.97	0.46
1:M:259:PHE:CD2	1:M:264:GLU:HG3	2.44	0.46
1:G:219:PRO:O	1:G:241:THR:HB	2.15	0.46
1:M:166:GLU:CG	1:M:221:LYS:HD2	2.42	0.46
1:M:178:PHE:CE1	1:M:184:LEU:HB3	2.50	0.46
1:G:186:LYS:O	1:G:186:LYS:HD3	2.16	0.46
1:G:213:TYR:OH	1:G:251:GLU:OE2	2.27	0.46
1:M:76:LEU:HD23	1:M:76:LEU:N	2.31	0.46
1:C:285:GLU:OE2	1:C:285:GLU:HA	2.13	0.46
1:E:253:ARG:NH2	1:F:238:ILE:HD13	2.31	0.46
1:G:60:LEU:HD23	1:G:60:LEU:O	2.16	0.46
1:K:111:PHE:CD2	1:K:112:GLU:N	2.73	0.46
1:K:146:ARG:NH2	1:K:213:TYR:OH	2.49	0.46
1:G:111:PHE:C	1:G:111:PHE:CD2	2.89	0.46
1:G:166:GLU:CG	1:G:221:LYS:HD2	2.45	0.46
1:K:228:ARG:HB2	1:K:231:ILE:CD1	2.46	0.46
1:M:118:THR:HG23	1:M:184:LEU:HD23	1.97	0.46
1:C:20:PHE:C	1:C:22:PRO:HD3	2.36	0.46
1:C:285:GLU:HG3	1:G:271:TYR:CZ	2.51	0.46
1:F:30:ILE:HG22	1:F:31:ALA:O	2.16	0.46
1:M:68:LEU:HA	1:M:105:TRP:O	2.16	0.46
1:C:52:LYS:HA	1:C:52:LYS:HD3	1.68	0.46
1:G:266:GLU:O	1:G:272:ASN:OD1	2.34	0.45
1:K:147:LEU:HD22	1:K:148:PHE:CE1	2.51	0.45
1:K:174:THR:OG1	1:K:177:ASN:ND2	2.47	0.45
1:K:269:LEU:O	1:K:272:ASN:ND2	2.47	0.45

Continued on next page...

Continued from previous page...

Atom-1	Atom-2	Interatomic distance (Å)	Clash overlap (Å)
1:M:15:LEU:HD12	1:M:69:PHE:CE2	2.51	0.45
1:G:16:ALA:HA	1:G:30:ILE:CG1	2.47	0.45
1:K:101:TYR:OH	1:K:251:GLU:OE2	2.31	0.45
1:C:124:LEU:HD13	1:C:171:TRP:HB3	1.98	0.45
1:M:63:SER:HB3	1:M:259:PHE:CD1	2.51	0.45
1:E:36:LYS:HB3	1:E:224:PHE:CE1	2.52	0.45
1:M:111:PHE:CD2	1:M:111:PHE:C	2.90	0.45
1:F:278:THR:CG2	1:F:287:THR:HG23	2.47	0.45
1:K:222:ASN:HB2	1:K:241:THR:CG2	2.47	0.45
1:M:234:THR:H	1:M:237:ALA:CB	2.30	0.45
1:M:39:GLU:HA	1:M:43:ALA:O	2.16	0.45
1:G:111:PHE:CD2	1:G:216:GLN:NE2	2.85	0.45
1:K:178:PHE:CE1	1:K:184:LEU:HB3	2.51	0.45
1:M:278:THR:CG2	1:M:287:THR:HG23	2.47	0.45
1:M:46:VAL:HA	1:M:47:PRO:HD2	1.76	0.45
1:M:255:ASN:HD21	1:M:257:HIS:CB	2.28	0.44
1:C:25:ASP:O	1:C:26:ARG:HG2	2.16	0.44
1:G:166:GLU:CD	1:G:221:LYS:HD2	2.38	0.44
1:G:36:LYS:NZ	1:G:286:GLN:HE21	2.15	0.44
1:M:65:ASN:HD22	1:M:255:ASN:ND2	2.08	0.44
1:E:105:TRP:CH2	1:E:244:MET:HE3	2.53	0.44
1:F:18:ASP:OD2	1:F:50:ILE:HD11	2.18	0.44
1:F:89:TYR:CZ	1:F:118:THR:HG22	2.53	0.44
1:G:126:HIS:HB3	3:G:402:HOH:O	2.17	0.44
1:F:7:ASN:O	1:F:253:ARG:HG2	2.18	0.44
1:F:113:LEU:HD13	1:F:117:LEU:CD1	2.47	0.44
1:G:36:LYS:HZ1	1:G:286:GLN:NE2	2.16	0.44
1:C:22:PRO:O	1:C:23:LYS:HG3	2.18	0.44
1:E:7:ASN:O	1:E:253:ARG:HG2	2.17	0.44
1:E:278:THR:OG1	1:E:287:THR:HG23	2.18	0.44
1:M:269:LEU:HD23	1:M:269:LEU:HA	1.82	0.44
1:K:146:ARG:HH11	1:K:146:ARG:HG3	1.82	0.44
1:K:152:PRO:O	1:K:153:GLU:C	2.56	0.43
1:K:165:THR:HB	1:K:217:TRP:CD2	2.53	0.43
1:K:21:ASP:HA	1:K:22:PRO:HD2	1.86	0.43
1:C:62:LYS:O	1:C:257:HIS:HB3	2.17	0.43
1:G:111:PHE:CE2	1:G:216:GLN:NE2	2.85	0.43
1:K:151:PHE:HB2	1:K:156:MET:CG	2.48	0.43
1:E:217:TRP:CD1	1:E:217:TRP:N	2.87	0.43
1:K:75:SER:O	1:K:79:SER:OG	2.23	0.43
1:F:138:PHE:HB3	1:F:142:VAL:HG11	1.99	0.43

Continued on next page...

Continued from previous page...

Atom-1	Atom-2	Interatomic distance (Å)	Clash overlap (Å)
1:K:101:TYR:CE2	1:K:251:GLU:OE2	2.72	0.43
1:M:101:TYR:O	1:M:255:ASN:HB2	2.18	0.43
1:G:263:GLU:HG2	1:G:263:GLU:H	1.67	0.43
1:M:105:TRP:HH2	1:M:244:MET:HE3	1.82	0.43
1:M:217:TRP:CZ3	1:M:219:PRO:HB3	2.54	0.43
1:C:118:THR:HG21	1:C:188:TYR:CZ	2.52	0.43
1:C:105:TRP:CE3	1:C:213:TYR:HB2	2.54	0.43
1:C:227:THR:O	1:C:228:ARG:HD3	2.18	0.43
1:C:228:ARG:HA	1:C:229:PRO:HD3	1.75	0.43
1:G:65:ASN:ND2	1:G:255:ASN:HD22	2.05	0.43
1:M:132:ILE:CG1	1:M:133:ALA:N	2.81	0.43
1:E:81:TYR:CE2	1:E:113:LEU:HD12	2.54	0.43
1:E:219:PRO:O	1:E:241:THR:HB	2.18	0.43
1:G:207:ALA:HB3	1:G:210:PHE:O	2.19	0.43
1:M:63:SER:HB3	1:M:259:PHE:CE1	2.53	0.43
1:K:238:ILE:O	1:K:241:THR:HG23	2.19	0.43
1:M:139:THR:O	1:M:142:VAL:HG22	2.18	0.43
1:C:222:ASN:HB2	1:C:241:THR:HG22	1.97	0.43
1:C:37:PHE:CE2	1:C:245:ALA:HB2	2.53	0.43
1:M:90:ARG:HE	1:M:90:ARG:HB3	1.68	0.43
1:M:97:SER:N	3:M:412:HOH:O	2.51	0.43
1:G:38:LEU:HD23	1:G:38:LEU:HA	1.77	0.42
1:K:194:ASN:HB2	1:K:201:PHE:CZ	2.54	0.42
1:K:89:TYR:OH	1:K:118:THR:CG2	2.66	0.42
1:K:89:TYR:OH	1:K:118:THR:HG22	2.20	0.42
1:M:142:VAL:HG23	1:M:143:LYS:HD2	2.01	0.42
1:M:278:THR:HG21	1:M:287:THR:HG23	2.01	0.42
1:E:224:PHE:CE1	1:F:40:SER:HA	2.54	0.42
1:M:226:TRP:HB2	1:M:285:GLU:OE1	2.19	0.42
1:E:89:TYR:CZ	1:E:118:THR:HG22	2.52	0.42
1:G:147:LEU:HD23	1:G:247:PHE:CD2	2.54	0.42
1:E:185:LYS:HG3	1:E:185:LYS:O	2.20	0.42
1:E:89:TYR:OH	1:E:118:THR:CG2	2.64	0.42
1:F:71:GLY:HA2	1:F:109:LEU:H	1.85	0.42
1:K:250:ASN:O	1:K:253:ARG:HB2	2.19	0.42
1:F:142:VAL:CG1	1:F:191:LEU:O	2.67	0.42
1:K:146:ARG:HB2	1:K:206:GLU:OE1	2.20	0.42
1:K:24:PRO:O	1:K:25:ASP:CB	2.57	0.42
1:K:23:LYS:O	1:K:26:ARG:HB2	2.19	0.42
1:M:81:TYR:CE2	1:M:113:LEU:HD11	2.54	0.42
1:E:250:ASN:HA	1:E:250:ASN:HD22	1.73	0.42

Continued on next page...

Continued from previous page...

Atom-1	Atom-2	Interatomic distance (Å)	Clash overlap (Å)
1:F:16:ALA:HA	1:F:30:ILE:HG13	2.01	0.42
1:G:134:LEU:O	1:G:165:THR:OG1	2.25	0.42
1:F:111:PHE:CD2	1:F:111:PHE:C	2.93	0.42
1:G:166:GLU:HG2	1:G:221:LYS:HD2	2.01	0.42
1:M:46:VAL:HG22	1:M:268:ALA:O	2.20	0.42
1:E:16:ALA:O	1:E:50:ILE:HD13	2.20	0.41
1:G:136:LEU:HG	1:G:165:THR:HG21	2.02	0.41
1:G:56:GLU:HA	1:G:59:ARG:NH2	2.34	0.41
1:K:41:ALA:HB3	1:K:249:VAL:HG21	2.01	0.41
1:K:285:GLU:OE2	1:K:285:GLU:HA	2.20	0.41
1:C:228:ARG:HB3	1:C:230:TYR:CE2	2.55	0.41
1:K:52:LYS:HB2	1:K:57:TYR:CZ	2.55	0.41
1:M:21:ASP:O	1:M:22:PRO:C	2.59	0.41
1:M:228:ARG:HA	1:M:229:PRO:HD3	1.38	0.41
1:F:118:THR:CG2	1:F:188:TYR:OH	2.60	0.41
1:G:186:LYS:C	1:G:186:LYS:HD3	2.41	0.41
1:C:56:GLU:OE2	1:C:56:GLU:HA	2.20	0.41
1:E:207:ALA:HB3	1:E:210:PHE:O	2.20	0.41
1:E:277:TYR:HD1	1:E:279:GLY:H	1.69	0.41
1:M:178:PHE:O	1:M:179:THR:C	2.58	0.41
1:M:225:GLU:O	1:M:233:HIS:HE1	2.03	0.41
1:E:41:ALA:HB1	1:E:246:ASN:HA	2.02	0.41
1:F:25:ASP:OD1	1:F:291:ASN:HB2	2.21	0.41
1:F:263:GLU:H	1:F:263:GLU:HG2	1.59	0.41
1:K:274:LYS:HA	1:K:275:PRO:HD3	1.90	0.41
1:E:108:CYS:O	1:E:111:PHE:HB3	2.21	0.41
1:E:113:LEU:HD22	1:E:117:LEU:HG	2.03	0.41
1:K:92:ALA:O	1:K:95:ALA:HB3	2.21	0.41
1:G:89:TYR:HH	1:G:118:THR:HG22	1.76	0.41
1:K:113:LEU:HD22	1:K:117:LEU:HG	2.02	0.41
1:K:12:ILE:HD11	1:K:252:ALA:HB2	2.02	0.41
1:M:227:THR:O	1:M:228:ARG:CD	2.68	0.41
1:E:278:THR:CG2	1:E:287:THR:HG23	2.50	0.41
1:G:196:ASP:OD2	1:G:199:ASN:HB2	2.21	0.41
1:G:61:PHE:CD2	1:G:61:PHE:C	2.94	0.41
1:M:251:GLU:OE1	1:M:251:GLU:HA	2.21	0.41
1:G:201:PHE:HD1	1:G:202:VAL:O	2.04	0.41
1:G:221:LYS:HD3	1:G:231:ILE:CD1	2.50	0.41
1:M:47:PRO:HG3	1:M:273:TYR:CE2	2.56	0.41
1:M:56:GLU:C	1:M:58:SER:H	2.24	0.41
1:E:103:PRO:HA	1:E:211:PRO:O	2.20	0.40

Continued on next page...

Continued from previous page...

Atom-1	Atom-2	Interatomic distance (Å)	Clash overlap (Å)
1:E:52:LYS:HB2	1:E:57:TYR:CZ	2.56	0.40
1:G:122:LEU:HD23	1:G:122:LEU:HA	1.82	0.40
1:G:126:HIS:CE1	1:G:170:GLN:HG2	2.56	0.40
1:K:114:LEU:O	1:K:117:LEU:N	2.54	0.40
1:K:148:PHE:CD2	1:K:156:MET:SD	3.14	0.40
1:M:175:THR:HG21	1:M:200:LYS:HE2	2.03	0.40
1:G:25:ASP:H	1:G:291:ASN:HD22	1.70	0.40
1:M:259:PHE:O	1:M:260:ALA:C	2.59	0.40
1:F:282:SER:OG	1:F:283:ALA:N	2.53	0.40
1:K:213:TYR:N	1:K:213:TYR:CD1	2.89	0.40
1:K:181:ASN:HD22	1:K:182:LYS:H	1.69	0.40
1:M:69:PHE:O	1:M:110:GLY:HA3	2.21	0.40

There are no symmetry-related clashes.

5.3 Torsion angles [i](#)

5.3.1 Protein backbone [i](#)

In the following table, the Percentiles column shows the percent Ramachandran outliers of the chain as a percentile score with respect to all X-ray entries followed by that with respect to entries of similar resolution.

The Analysed column shows the number of residues for which the backbone conformation was analysed, and the total number of residues.

Mol	Chain	Analysed	Favoured	Allowed	Outliers	Percentiles	
1	C	285/312 (91%)	271 (95%)	13 (5%)	1 (0%)	34	38
1	E	285/312 (91%)	264 (93%)	19 (7%)	2 (1%)	22	22
1	F	285/312 (91%)	270 (95%)	15 (5%)	0	100	100
1	G	285/312 (91%)	261 (92%)	23 (8%)	1 (0%)	34	38
1	K	285/312 (91%)	239 (84%)	36 (13%)	10 (4%)	3	1
1	M	285/312 (91%)	244 (86%)	33 (12%)	8 (3%)	5	2
All	All	1710/1872 (91%)	1549 (91%)	139 (8%)	22 (1%)	12	9

All (22) Ramachandran outliers are listed below:

Mol	Chain	Res	Type
1	K	158	SER

Continued on next page...

Continued from previous page...

Mol	Chain	Res	Type
1	K	161	THR
1	M	250	ASN
1	K	150	GLU
1	K	153	GLU
1	K	157	LYS
1	K	179	THR
1	M	97	SER
1	M	99	GLY
1	M	100	ASP
1	M	131	GLY
1	E	99	GLY
1	G	281	GLN
1	M	141	ASP
1	K	115	THR
1	K	175	THR
1	M	115	THR
1	M	9	ARG
1	K	99	GLY
1	C	229	PRO
1	E	131	GLY
1	K	131	GLY

5.3.2 Protein sidechains [i](#)

In the following table, the Percentiles column shows the percent sidechain outliers of the chain as a percentile score with respect to all X-ray entries followed by that with respect to entries of similar resolution.

The Analysed column shows the number of residues for which the sidechain conformation was analysed, and the total number of residues.

Mol	Chain	Analysed	Rotameric	Outliers	Percentiles	
1	C	250/272 (92%)	230 (92%)	20 (8%)	12	12
1	E	250/272 (92%)	232 (93%)	18 (7%)	14	14
1	F	250/272 (92%)	226 (90%)	24 (10%)	8	7
1	G	250/272 (92%)	220 (88%)	30 (12%)	5	4
1	K	250/272 (92%)	231 (92%)	19 (8%)	13	13
1	M	250/272 (92%)	222 (89%)	28 (11%)	6	5
All	All	1500/1632 (92%)	1361 (91%)	139 (9%)	9	8

All (139) residues with a non-rotameric sidechain are listed below:

Mol	Chain	Res	Type
1	E	5	LYS
1	E	18	ASP
1	E	55	ASP
1	E	67	VAL
1	E	83	LYS
1	E	113	LEU
1	E	118	THR
1	E	122	LEU
1	E	140	GLU
1	E	141	ASP
1	E	147	LEU
1	E	185	LYS
1	E	241	THR
1	E	264	GLU
1	E	276	GLU
1	E	277	TYR
1	E	281	GLN
1	E	287	THR
1	F	7	ASN
1	F	15	LEU
1	F	21	ASP
1	F	40	SER
1	F	50	ILE
1	F	58	SER
1	F	74	VAL
1	F	113	LEU
1	F	118	THR
1	F	125	SER
1	F	141	ASP
1	F	147	LEU
1	F	166	GLU
1	F	172	SER
1	F	173	ILE
1	F	175	THR
1	F	185	LYS
1	F	186	LYS
1	F	217	TRP
1	F	227	THR
1	F	241	THR
1	F	281	GLN
1	F	282	SER
1	F	287	THR

Continued on next page...

Continued from previous page...

Mol	Chain	Res	Type
1	C	5	LYS
1	C	17	GLN
1	C	18	ASP
1	C	56	GLU
1	C	58	SER
1	C	59	ARG
1	C	60	LEU
1	C	67	VAL
1	C	111	PHE
1	C	113	LEU
1	C	118	THR
1	C	142	VAL
1	C	154	GLU
1	C	175	THR
1	C	176	GLU
1	C	186	LYS
1	C	241	THR
1	C	281	GLN
1	C	285	GLU
1	C	287	THR
1	G	5	LYS
1	G	15	LEU
1	G	17	GLN
1	G	20	PHE
1	G	40	SER
1	G	62	LYS
1	G	63	SER
1	G	67	VAL
1	G	74	VAL
1	G	76	LEU
1	G	111	PHE
1	G	113	LEU
1	G	119	SER
1	G	127	THR
1	G	130	SER
1	G	140	GLU
1	G	142	VAL
1	G	143	LYS
1	G	147	LEU
1	G	150	GLU
1	G	166	GLU
1	G	182	LYS

Continued on next page...

Continued from previous page...

Mol	Chain	Res	Type
1	G	185	LYS
1	G	186	LYS
1	G	204	THR
1	G	241	THR
1	G	263	GLU
1	G	267	LYS
1	G	277	TYR
1	G	287	THR
1	K	18	ASP
1	K	20	PHE
1	K	59	ARG
1	K	67	VAL
1	K	76	LEU
1	K	98	ASN
1	K	111	PHE
1	K	113	LEU
1	K	118	THR
1	K	151	PHE
1	K	161	THR
1	K	190	VAL
1	K	203	SER
1	K	204	THR
1	K	241	THR
1	K	276	GLU
1	K	281	GLN
1	K	287	THR
1	K	291	ASN
1	M	5	LYS
1	M	6	THR
1	M	15	LEU
1	M	18	ASP
1	M	20	PHE
1	M	26	ARG
1	M	29	TYR
1	M	58	SER
1	M	67	VAL
1	M	76	LEU
1	M	83	LYS
1	M	98	ASN
1	M	101	TYR
1	M	113	LEU
1	M	125	SER

Continued on next page...

Continued from previous page...

Mol	Chain	Res	Type
1	M	147	LEU
1	M	149	LYS
1	M	166	GLU
1	M	173	ILE
1	M	185	LYS
1	M	195	THR
1	M	203	SER
1	M	204	THR
1	M	222	ASN
1	M	235	PRO
1	M	241	THR
1	M	251	GLU
1	M	287	THR

Some sidechains can be flipped to improve hydrogen bonding and reduce clashes. All (36) such sidechains are listed below:

Mol	Chain	Res	Type
1	E	167	ASN
1	E	218	ASN
1	E	250	ASN
1	F	51	ASN
1	F	167	ASN
1	F	216	GLN
1	F	218	ASN
1	F	255	ASN
1	F	272	ASN
1	F	281	GLN
1	F	286	GLN
1	F	291	ASN
1	C	167	ASN
1	C	177	ASN
1	C	218	ASN
1	C	250	ASN
1	G	126	HIS
1	G	128	ASN
1	G	167	ASN
1	G	255	ASN
1	G	272	ASN
1	G	286	GLN
1	G	291	ASN
1	K	181	ASN
1	K	218	ASN

Continued on next page...

Continued from previous page...

Mol	Chain	Res	Type
1	K	233	HIS
1	K	250	ASN
1	M	96	ASN
1	M	128	ASN
1	M	167	ASN
1	M	216	GLN
1	M	222	ASN
1	M	246	ASN
1	M	255	ASN
1	M	257	HIS
1	M	286	GLN

5.3.3 RNA [i](#)

There are no RNA molecules in this entry.

5.4 Non-standard residues in protein, DNA, RNA chains [i](#)

There are no non-standard protein/DNA/RNA residues in this entry.

5.5 Carbohydrates [i](#)

There are no carbohydrates in this entry.

5.6 Ligand geometry [i](#)

3 ligands are modelled in this entry.

In the following table, the Counts columns list the number of bonds (or angles) for which Mogul statistics could be retrieved, the number of bonds (or angles) that are observed in the model and the number of bonds (or angles) that are defined in the Chemical Component Dictionary. The Link column lists molecule types, if any, to which the group is linked. The Z score for a bond length (or angle) is the number of standard deviations the observed value is removed from the expected value. A bond length (or angle) with $|Z| > 2$ is considered an outlier worth inspection. RMSZ is the root-mean-square of all Z scores of the bond lengths (or angles).

Mol	Type	Chain	Res	Link	Bond lengths			Bond angles		
					Counts	RMSZ	$\# Z > 2$	Counts	RMSZ	$\# Z > 2$
2	GOL	G	301	-	5,5,5	0.56	0	5,5,5	0.29	0
2	GOL	K	301	-	5,5,5	0.59	0	5,5,5	0.53	0
2	GOL	C	301	-	5,5,5	0.73	0	5,5,5	0.57	0

In the following table, the Chirals column lists the number of chiral outliers, the number of chiral centers analysed, the number of these observed in the model and the number defined in the Chemical Component Dictionary. Similar counts are reported in the Torsion and Rings columns. '-' means no outliers of that kind were identified.

Mol	Type	Chain	Res	Link	Chirals	Torsions	Rings
2	GOL	G	301	-	-	2/4/4/4	-
2	GOL	K	301	-	-	4/4/4/4	-
2	GOL	C	301	-	-	4/4/4/4	-

There are no bond length outliers.

There are no bond angle outliers.

There are no chirality outliers.

All (10) torsion outliers are listed below:

Mol	Chain	Res	Type	Atoms
2	G	301	GOL	C1-C2-C3-O3
2	K	301	GOL	C1-C2-C3-O3
2	C	301	GOL	O1-C1-C2-C3
2	C	301	GOL	C1-C2-C3-O3
2	K	301	GOL	O1-C1-C2-C3
2	G	301	GOL	O2-C2-C3-O3
2	C	301	GOL	O1-C1-C2-O2
2	C	301	GOL	O2-C2-C3-O3
2	K	301	GOL	O1-C1-C2-O2
2	K	301	GOL	O2-C2-C3-O3

There are no ring outliers.

No monomer is involved in short contacts.

5.7 Other polymers [i](#)

There are no such residues in this entry.

5.8 Polymer linkage issues [i](#)

There are no chain breaks in this entry.

6 Fit of model and data [i](#)

6.1 Protein, DNA and RNA chains [i](#)

In the following table, the column labelled ‘#RSRZ> 2’ contains the number (and percentage) of RSRZ outliers, followed by percent RSRZ outliers for the chain as percentile scores relative to all X-ray entries and entries of similar resolution. The OWAB column contains the minimum, median, 95th percentile and maximum values of the occupancy-weighted average B-factor per residue. The column labelled ‘Q< 0.9’ lists the number of (and percentage) of residues with an average occupancy less than 0.9.

Mol	Chain	Analysed	<RSRZ>	#RSRZ>2	OWAB(Å ²)	Q<0.9
1	C	287/312 (91%)	0.17	16 (5%) 24 33	18, 34, 51, 67	9 (3%)
1	E	287/312 (91%)	0.43	28 (9%) 7 12	26, 43, 60, 68	9 (3%)
1	F	287/312 (91%)	0.29	17 (5%) 22 31	27, 45, 62, 74	5 (1%)
1	G	287/312 (91%)	0.49	26 (9%) 9 14	23, 45, 62, 69	5 (1%)
1	K	287/312 (91%)	0.93	41 (14%) 2 4	38, 63, 80, 87	9 (3%)
1	M	287/312 (91%)	1.18	54 (18%) 1 2	35, 66, 87, 99	5 (1%)
All	All	1722/1872 (91%)	0.58	182 (10%) 6 10	18, 49, 77, 99	42 (2%)

All (182) RSRZ outliers are listed below:

Mol	Chain	Res	Type	RSRZ
1	M	144	GLY	7.2
1	M	280	ILE	6.8
1	K	250	ASN	6.2
1	M	250	ASN	6.1
1	E	68	LEU	5.4
1	K	20	PHE	5.3
1	F	198	TYR	5.2
1	M	20	PHE	5.2
1	G	250	ASN	5.2
1	K	178	PHE	5.1
1	M	59	ARG	4.7
1	C	20	PHE	4.6
1	M	97	SER	4.2
1	M	105	TRP	4.2
1	C	202	VAL	4.2
1	M	67	VAL	4.2
1	M	24	PRO	4.1
1	C	115	THR	4.1
1	M	107	THR	4.1

Continued on next page...

Continued from previous page...

Mol	Chain	Res	Type	RSRZ
1	E	20	PHE	4.0
1	M	215	THR	4.0
1	E	250	ASN	4.0
1	G	245	ALA	3.9
1	M	111	PHE	3.9
1	F	250	ASN	3.9
1	M	108	CYS	3.8
1	E	115	THR	3.8
1	K	202	VAL	3.8
1	E	107	THR	3.8
1	M	214	ALA	3.7
1	M	74	VAL	3.7
1	E	105	TRP	3.7
1	M	126	HIS	3.7
1	K	182	LYS	3.6
1	K	245	ALA	3.6
1	E	283	ALA	3.5
1	E	106	GLY	3.5
1	K	105	TRP	3.4
1	K	25	ASP	3.4
1	M	68	LEU	3.3
1	M	155	LEU	3.3
1	C	250	ASN	3.3
1	K	249	VAL	3.3
1	F	20	PHE	3.3
1	K	248	PHE	3.3
1	M	69	PHE	3.3
1	M	98	ASN	3.2
1	M	104	VAL	3.2
1	G	105	TRP	3.2
1	K	59	ARG	3.2
1	M	99	GLY	3.2
1	G	283	ALA	3.2
1	K	104	VAL	3.1
1	G	107	THR	3.1
1	G	115	THR	3.1
1	E	215	THR	3.1
1	K	276	GLU	3.1
1	M	178	PHE	3.1
1	E	179	THR	3.1
1	M	143	LYS	3.1
1	E	14	VAL	3.1

Continued on next page...

Continued from previous page...

Mol	Chain	Res	Type	RSRZ
1	M	106	GLY	3.1
1	M	25	ASP	3.0
1	K	99	GLY	3.0
1	E	70	PRO	3.0
1	G	68	LEU	3.0
1	M	219	PRO	3.0
1	K	283	ALA	3.0
1	F	68	LEU	2.9
1	K	186	LYS	2.9
1	M	256	LEU	2.9
1	M	115	THR	2.8
1	F	107	THR	2.8
1	M	12	ILE	2.8
1	E	260	ALA	2.8
1	G	198	TYR	2.8
1	K	107	THR	2.8
1	K	188	TYR	2.8
1	E	37	PHE	2.8
1	M	19	VAL	2.8
1	K	213	TYR	2.8
1	E	245	ALA	2.7
1	E	266	GLU	2.7
1	G	143	LYS	2.7
1	M	78	SER	2.7
1	E	69	PHE	2.7
1	M	7	ASN	2.7
1	C	50	ILE	2.7
1	M	259	PHE	2.7
1	C	106	GLY	2.7
1	G	281	GLN	2.7
1	C	214	ALA	2.6
1	K	260	ALA	2.6
1	E	202	VAL	2.6
1	G	97	SER	2.6
1	G	20	PHE	2.6
1	F	158	SER	2.6
1	C	107	THR	2.6
1	F	5	LYS	2.6
1	G	215	THR	2.5
1	F	37	PHE	2.5
1	M	140	GLU	2.5
1	K	68	LEU	2.5

Continued on next page...

Continued from previous page...

Mol	Chain	Res	Type	RSRZ
1	K	122	LEU	2.5
1	M	184	LEU	2.5
1	E	35	VAL	2.5
1	M	260	ALA	2.5
1	K	247	PHE	2.5
1	C	281	GLN	2.5
1	K	123	LEU	2.5
1	K	106	GLY	2.4
1	K	136	LEU	2.4
1	M	63	SER	2.4
1	K	215	THR	2.4
1	F	143	LYS	2.4
1	C	5	LYS	2.4
1	C	280	ILE	2.4
1	K	132	ILE	2.4
1	F	134	LEU	2.4
1	M	136	LEU	2.4
1	M	80	GLY	2.4
1	M	158	SER	2.4
1	M	189	ARG	2.3
1	G	38	LEU	2.3
1	G	108	CYS	2.3
1	M	159	LEU	2.3
1	G	185	LYS	2.3
1	E	67	VAL	2.3
1	K	212	ILE	2.3
1	E	110	GLY	2.3
1	G	110	GLY	2.3
1	E	248	PHE	2.3
1	F	111	PHE	2.3
1	F	283	ALA	2.3
1	K	147	LEU	2.3
1	G	67	VAL	2.3
1	G	249	VAL	2.3
1	K	289	PHE	2.3
1	C	215	THR	2.2
1	G	54	GLU	2.2
1	F	23	LYS	2.2
1	K	230	TYR	2.2
1	F	67	VAL	2.2
1	M	281	GLN	2.2
1	E	99	GLY	2.2

Continued on next page...

Continued from previous page...

Mol	Chain	Res	Type	RSRZ
1	K	214	ALA	2.2
1	M	55	ASP	2.2
1	G	70	PRO	2.2
1	M	71	GLY	2.2
1	K	38	LEU	2.2
1	M	73	GLY	2.2
1	E	38	LEU	2.2
1	C	245	ALA	2.1
1	E	12	ILE	2.1
1	M	50	ILE	2.1
1	G	37	PHE	2.1
1	K	143	LYS	2.1
1	G	158	SER	2.1
1	E	214	ALA	2.1
1	F	277	TYR	2.1
1	M	70	PRO	2.1
1	C	105	TRP	2.1
1	K	161	THR	2.1
1	M	66	GLY	2.1
1	E	104	VAL	2.1
1	M	37	PHE	2.1
1	E	256	LEU	2.0
1	M	212	ILE	2.0
1	M	253	ARG	2.0
1	C	179	THR	2.0
1	G	106	GLY	2.0
1	K	142	VAL	2.0
1	C	111	PHE	2.0
1	K	256	LEU	2.0
1	F	215	THR	2.0
1	K	115	THR	2.0
1	K	118	THR	2.0
1	G	214	ALA	2.0
1	G	24	PRO	2.0
1	F	105	TRP	2.0
1	K	187	PHE	2.0
1	M	177	ASN	2.0

6.2 Non-standard residues in protein, DNA, RNA chains

There are no non-standard protein/DNA/RNA residues in this entry.

6.3 Carbohydrates [i](#)

There are no carbohydrates in this entry.

6.4 Ligands [i](#)

In the following table, the Atoms column lists the number of modelled atoms in the group and the number defined in the chemical component dictionary. The B-factors column lists the minimum, median, 95th percentile and maximum values of B factors of atoms in the group. The column labelled 'Q< 0.9' lists the number of atoms with occupancy less than 0.9.

Mol	Type	Chain	Res	Atoms	RSCC	RSR	B-factors(Å ²)	Q<0.9
2	GOL	C	301	6/6	0.72	0.30	62,69,70,70	0
2	GOL	K	301	6/6	0.81	0.19	66,67,67,68	0
2	GOL	G	301	6/6	0.88	0.24	55,59,59,60	0

6.5 Other polymers [i](#)

There are no such residues in this entry.