



wwPDB NMR Structure Validation Summary Report ⓘ

Jun 4, 2023 – 03:47 AM EDT

PDB ID : 2LFO
BMRB ID : 17767
Title : NMR structure of cl-BABP/SS complexed with glycochenodeoxycholic and glycocholic acids
Authors : Tomaselli, S.; Cogliati, C.; Pagano, K.; Zetta, L.; Zanzoni, S.; Assfalg, M.; Molinari, H.; Ragona, L.
Deposited on : 2011-07-07

This is a wwPDB NMR Structure Validation Summary Report for a publicly released PDB entry.

We welcome your comments at validation@mail.wwpdb.org

A user guide is available at

<https://www.wwpdb.org/validation/2017/NMRValidationReportHelp>

with specific help available everywhere you see the ⓘ symbol.

The types of validation reports are described at

<http://www.wwpdb.org/validation/2017/FAQs#types>.

The following versions of software and data (see [references ⓘ](#)) were used in the production of this report:

MolProbity : 4.02b-467
Mogul : 1.8.5 (274361), CSD as541be (2020)
buster-report : 1.1.7 (2018)
Percentile statistics : 20191225.v01 (using entries in the PDB archive December 25th 2019)
wwPDB-RCI : v_1n_11_5_13_A (Berjanski et al., 2005)
PANAV : Wang et al. (2010)
wwPDB-ShiftChecker : v1.2
BMRB Restraints Analysis : v1.2
Ideal geometry (proteins) : Engh & Huber (2001)
Ideal geometry (DNA, RNA) : Parkinson et al. (1996)
Validation Pipeline (wwPDB-VP) : 2.33

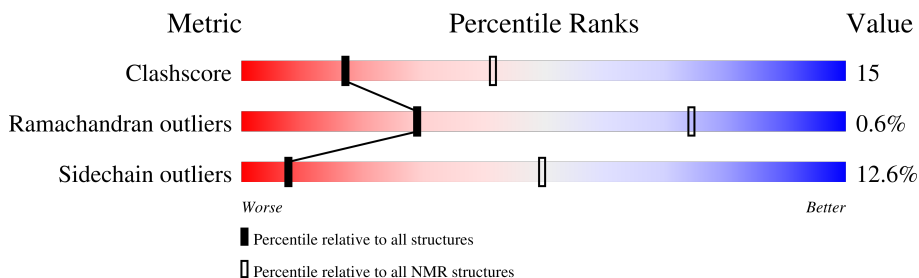
1 Overall quality at a glance

The following experimental techniques were used to determine the structure:

SOLUTION NMR

The overall completeness of chemical shifts assignment is 87%.

Percentile scores (ranging between 0-100) for global validation metrics of the entry are shown in the following graphic. The table shows the number of entries on which the scores are based.



Metric	Whole archive (#Entries)	NMR archive (#Entries)
Clashscore	158937	12864
Ramachandran outliers	154571	11451
Sidechain outliers	154315	11428

The table below summarises the geometric issues observed across the polymeric chains and their fit to the experimental data. The red, orange, yellow and green segments indicate the fraction of residues that contain outliers for ≥ 3 , 2, 1 and 0 types of geometric quality criteria. A cyan segment indicates the fraction of residues that are not part of the well-defined cores, and a grey segment represents the fraction of residues that are not modelled. The numeric value for each fraction is indicated below the corresponding segment, with a dot representing fractions $\leq 5\%$.

Mol	Chain	Length	Quality of chain
1	A	125	 75% 24% .

2 Ensemble composition and analysis

This entry contains 20 models. Model 1 is the overall representative, medoid model (most similar to other models).

The following residues are included in the computation of the global validation metrics.

Well-defined (core) protein residues			
Well-defined core	Residue range (total)	Backbone RMSD (Å)	Medoid model
1	A:1-A:125 (125)	0.56	1

Ill-defined regions of proteins are excluded from the global statistics.

Ligands and non-protein polymers are included in the analysis.

The models can be grouped into 2 clusters. No single-model clusters were found.

Cluster number	Models
1	1, 2, 3, 5, 6, 7, 9, 10, 13, 14, 15, 16, 17, 18, 19, 20
2	4, 8, 11, 12

3 Entry composition [i](#)

There are 3 unique types of molecules in this entry. The entry contains 2065 atoms, of which 1012 are hydrogens and 0 are deuteriums.

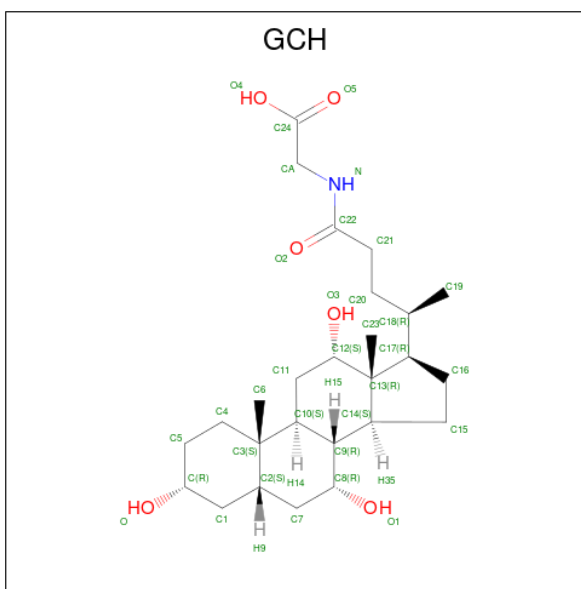
- Molecule 1 is a protein called Fatty acid-binding protein, liver.

Mol	Chain	Residues	Atoms					Trace	
			Total	C	H	N	O		S
1	A	125	2000	624	1012	169	190	5	0

There is a discrepancy between the modelled and reference sequences:

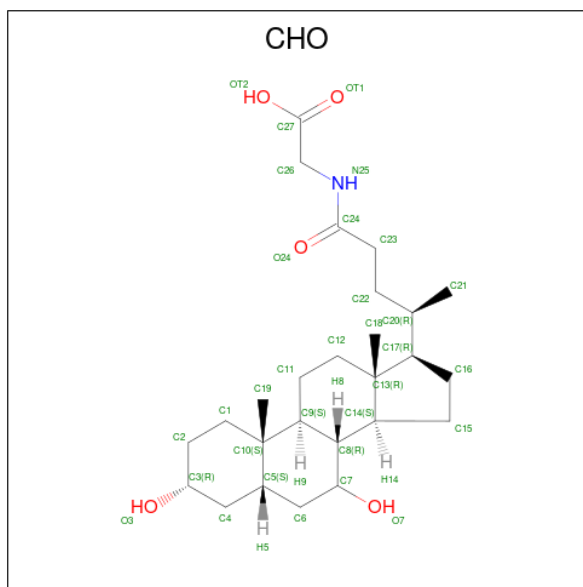
Chain	Residue	Modelled	Actual	Comment	Reference
A	91	CYS	THR	variant	UNP P80226

- Molecule 2 is GLYCOCHOLIC ACID (three-letter code: GCH) (formula: $C_{26}H_{43}NO_6$).



Mol	Chain	Residues	Atoms			
			Total	C	N	O
2	A	1	33	26	1	6

- Molecule 3 is GLYCOCHENODEOXYCHOLIC ACID (three-letter code: CHO) (formula: $C_{26}H_{43}NO_5$).



Mol	Chain	Residues	Atoms			
			Total	C	N	O
3	A	1	32	26	1	5

5 Refinement protocol and experimental data overview

The models were refined using the following method: *molecular dynamics*.

Of the 50 calculated structures, 20 were deposited, based on the following criterion: *best HADDOCK score*.

The following table shows the software used for structure solution, optimisation and refinement.

Software name	Classification	Version
X-PLOR NIH	structure solution	2.26
HADDOCK	refinement	2.1

The following table shows chemical shift validation statistics as aggregates over all chemical shift files. Detailed validation can be found in section 7 of this report.

Chemical shift file(s)	working_cs.cif
Number of chemical shift lists	1
Total number of shifts	1509
Number of shifts mapped to atoms	1509
Number of unparsed shifts	0
Number of shifts with mapping errors	0
Number of shifts with mapping warnings	0
Assignment completeness (well-defined parts)	87%

6 Model quality [i](#)

6.1 Standard geometry [i](#)

Bond lengths and bond angles in the following residue types are not validated in this section: GCH, CHO

There are no covalent bond-length or bond-angle outliers.

There are no bond-length outliers.

There are no bond-angle outliers.

There are no chirality outliers.

There are no planarity outliers.

6.2 Too-close contacts [i](#)

In the following table, the Non-H and H(model) columns list the number of non-hydrogen atoms and hydrogen atoms in each chain respectively. The H(added) column lists the number of hydrogen atoms added and optimized by MolProbity. The Clashes column lists the number of clashes averaged over the ensemble.

Mol	Chain	Non-H	H(model)	H(added)	Clashes
1	A	988	1012	1011	24±3
2	A	33	0	42	11±3
3	A	32	0	42	13±4
All	All	21060	20240	21900	659

The all-atom clashscore is defined as the number of clashes found per 1000 atoms (including hydrogen atoms). The all-atom clashscore for this structure is 15.

5 of 218 unique clashes are listed below, sorted by their clash magnitude.

Atom-1	Atom-2	Clash(Å)	Distance(Å)	Models	
				Worst	Total
3:A:202:CHO:O24	3:A:202:CHO:H211	1.00	1.56	9	4
1:A:73:MET:SD	3:A:202:CHO:H17	0.88	2.08	4	2
2:A:201:GCH:H21	3:A:202:CHO:O3	0.86	1.70	8	3
1:A:13:ASN:OD1	1:A:118:LEU:HA	0.84	1.72	8	6
1:A:54:PRO:HD2	3:A:202:CHO:H221	0.84	1.47	9	8

6.3 Torsion angles [i](#)

6.3.1 Protein backbone [i](#)

In the following table, the Percentiles column shows the percent Ramachandran outliers of the chain as a percentile score with respect to all PDB entries followed by that with respect to all NMR entries. The Analysed column shows the number of residues for which the backbone conformation was analysed and the total number of residues.

Mol	Chain	Analysed	Favoured	Allowed	Outliers	Percentiles	
1	A	123/125 (98%)	112±2 (91±2%)	10±2 (8±2%)	1±1 (1±1%)	29	74
All	All	2460/2500 (98%)	2249 (91%)	196 (8%)	15 (1%)	29	74

All 5 unique Ramachandran outliers are listed below. They are sorted by the frequency of occurrence in the ensemble.

Mol	Chain	Res	Type	Models (Total)
1	A	13	ASN	9
1	A	43	LYS	3
1	A	12	GLU	1
1	A	95	LYS	1
1	A	44	GLY	1

6.3.2 Protein sidechains [i](#)

In the following table, the Percentiles column shows the percent sidechain outliers of the chain as a percentile score with respect to all PDB entries followed by that with respect to all NMR entries. The Analysed column shows the number of residues for which the sidechain conformation was analysed and the total number of residues.

Mol	Chain	Analysed	Rotameric	Outliers	Percentiles	
1	A	110/110 (100%)	96±3 (87±3%)	14±3 (13±3%)	8	50
All	All	2200/2200 (100%)	1922 (87%)	278 (13%)	8	50

5 of 65 unique residues with a non-rotameric sidechain are listed below. They are sorted by the frequency of occurrence in the ensemble.

Mol	Chain	Res	Type	Models (Total)
1	A	37	ILE	20
1	A	40	ILE	20
1	A	3	SER	17
1	A	61	SER	13
1	A	93	SER	13

6.3.3 RNA [i](#)

There are no RNA molecules in this entry.

6.4 Non-standard residues in protein, DNA, RNA chains [i](#)

There are no non-standard protein/DNA/RNA residues in this entry.

6.5 Carbohydrates [i](#)

There are no monosaccharides in this entry.

6.6 Ligand geometry [i](#)

2 ligands are modelled in this entry.

In the following table, the Counts columns list the number of bonds for which Mogul statistics could be retrieved, the number of bonds that are observed in the model and the number of bonds that are defined in the chemical component dictionary. The Link column lists molecule types, if any, to which the group is linked. The Z score for a bond length is the number of standard deviations the observed value is removed from the expected value. A bond length with $|Z| > 2$ is considered an outlier worth inspection. RMSZ is the average root-mean-square of all Z scores of the bond lengths.

Mol	Type	Chain	Res	Link	Bond lengths		
					Counts	RMSZ	#Z>2
2	GCH	A	201	-	36,36,36	0.70±0.01	0±0 (0±0%)
3	CHO	A	202	-	35,35,35	0.66±0.01	0±0 (0±0%)

In the following table, the Counts columns list the number of angles for which Mogul statistics could be retrieved, the number of angles that are observed in the model and the number of angles that are defined in the chemical component dictionary. The Link column lists molecule types, if any, to which the group is linked. The Z score for a bond angle is the number of standard deviations the observed value is removed from the expected value. A bond angle with $|Z| > 2$ is considered an outlier worth inspection. RMSZ is the average root-mean-square of all Z scores of the bond angles.

Mol	Type	Chain	Res	Link	Bond angles		
					Counts	RMSZ	#Z>2
2	GCH	A	201	-	56,56,56	1.83±0.03	11±1 (19±2%)
3	CHO	A	202	-	54,54,54	1.58±0.04	8±1 (15±1%)

In the following table, the Chirals column lists the number of chiral outliers, the number of chiral

centers analysed, the number of these observed in the model and the number defined in the chemical component dictionary. Similar counts are reported in the Torsion and Rings columns. '-' means no outliers of that kind were identified.

Mol	Type	Chain	Res	Link	Chirals	Torsions	Rings
3	CHO	A	202	-	-	0±0,14,75,75	0±0,4,4,4
2	GCH	A	201	-	-	0±0,14,79,79	0±0,4,4,4

There are no bond-length outliers.

5 of 25 unique angle outliers are listed below. They are sorted according to the Z-score of the worst occurrence in the ensemble.

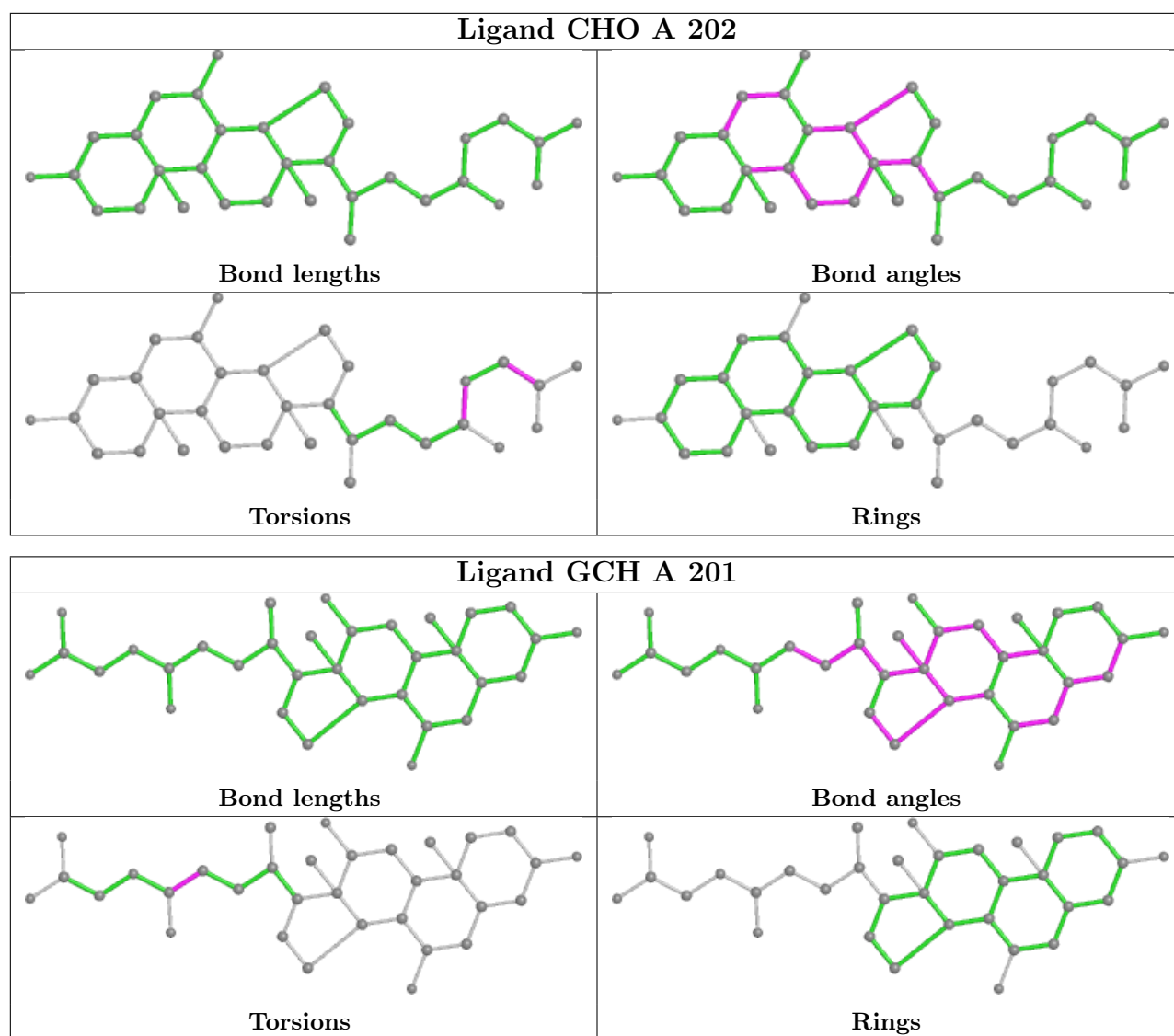
Mol	Chain	Res	Type	Atoms	Z	Observed(°)	Ideal(°)	Models	
								Worst	Total
2	A	201	GCH	C13-C17-C18	6.88	111.28	119.50	17	20
2	A	201	GCH	C13-C14-C9	5.09	108.23	114.74	17	20
3	A	202	CHO	C13-C17-C20	5.08	111.53	119.49	4	20
2	A	201	GCH	C2-C7-C8	4.79	109.18	114.46	19	20
3	A	202	CHO	C5-C6-C7	4.76	109.21	114.46	9	20

There are no chirality outliers.

There are no torsion outliers.

There are no ring outliers.

The following is a two-dimensional graphical depiction of Mogul quality analysis of bond lengths, bond angles, torsion angles, and ring geometry for all instances of the Ligand of Interest. In addition, ligands with molecular weight > 250 and outliers as shown on the validation Tables will also be included. For torsion angles, if less than 5% of the Mogul distribution of torsion angles is within 10 degrees of the torsion angle in question, then that torsion angle is considered an outlier. Any bond that is central to one or more torsion angles identified as an outlier by Mogul will be highlighted in the graph. For rings, the root-mean-square deviation (RMSD) between the ring in question and similar rings identified by Mogul is calculated over all ring torsion angles. If the average RMSD is greater than 60 degrees and the minimal RMSD between the ring in question and any Mogul-identified rings is also greater than 60 degrees, then that ring is considered an outlier. The outliers are highlighted in purple. The color gray indicates Mogul did not find sufficient equivalents in the CSD to analyse the geometry.



6.7 Other polymers [i](#)

There are no such molecules in this entry.

6.8 Polymer linkage issues [i](#)

There are no chain breaks in this entry.

7 Chemical shift validation [i](#)

The completeness of assignment taking into account all chemical shift lists is 87% for the well-defined parts and 87% for the entire structure.

7.1 Chemical shift list 1

File name: working_cs.cif

Chemical shift list name: *assigned_chem_shift_list_1*

7.1.1 Bookkeeping [i](#)

The following table shows the results of parsing the chemical shift list and reports the number of nuclei with statistically unusual chemical shifts.

Total number of shifts	1509
Number of shifts mapped to atoms	1509
Number of unparsed shifts	0
Number of shifts with mapping errors	0
Number of shifts with mapping warnings	0
Number of shift outliers (ShiftChecker)	2

7.1.2 Chemical shift referencing [i](#)

The following table shows the suggested chemical shift referencing corrections.

Nucleus	# values	Correction \pm precision, ppm	Suggested action
$^{13}\text{C}_\alpha$	124	-0.42 \pm 0.10	None needed (< 0.5 ppm)
$^{13}\text{C}_\beta$	116	-0.19 \pm 0.10	None needed (< 0.5 ppm)
$^{13}\text{C}'$	113	-0.07 \pm 0.12	None needed (< 0.5 ppm)
^{15}N	116	-1.21 \pm 0.50	Should be applied

7.1.3 Completeness of resonance assignments [i](#)

The following table shows the completeness of the chemical shift assignments for the well-defined regions of the structure. The overall completeness is 87%, i.e. 1509 atoms were assigned a chemical shift out of a possible 1726. 0 out of 20 assigned methyl groups (LEU and VAL) were assigned stereospecifically.

	Total	^1H	^{13}C	^{15}N
Backbone	600/627 (96%)	247/255 (97%)	237/250 (95%)	116/122 (95%)
Sidechain	837/993 (84%)	554/642 (86%)	275/312 (88%)	8/39 (21%)

Continued on next page...

Continued from previous page...

	Total	¹ H	¹³ C	¹⁵ N
Aromatic	72/106 (68%)	31/52 (60%)	36/49 (73%)	5/5 (100%)
Overall	1509/1726 (87%)	832/949 (88%)	548/611 (90%)	129/166 (78%)

7.1.4 Statistically unusual chemical shifts [i](#)

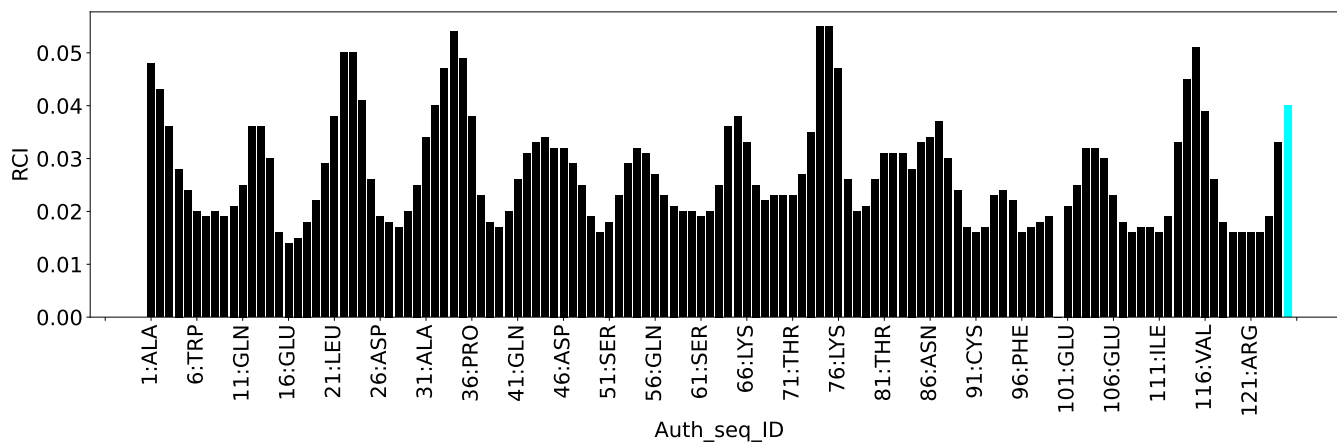
The following table lists the statistically unusual chemical shifts. These are statistical measures, and large deviations from the mean do not necessarily imply incorrect assignments. Molecules containing paramagnetic centres or hemes are expected to give rise to anomalous chemical shifts.

List Id	Chain	Res	Type	Atom	Shift, ppm	Expected range, ppm	Z-score
1	A	113	PHE	CD2	125.30	125.53 – 137.61	-5.2
1	A	113	PHE	CD1	125.30	125.33 – 137.83	-5.0

7.1.5 Random Coil Index (RCI) plots [i](#)

The image below reports *random coil index* values for the protein chains in the structure. The height of each bar gives a probability of a given residue to be disordered, as predicted from the available chemical shifts and the amino acid sequence. A value above 0.2 is an indication of significant predicted disorder. The colour of the bar shows whether the residue is in the well-defined core (black) or in the ill-defined residue ranges (cyan), as described in section 2 on ensemble composition. If well-defined core and ill-defined regions are not identified then it is shown as gray bars.

Random coil index (RCI) for chain A:



8 NMR restraints analysis

8.1 Conformationally restricting restraints

The following table provides the summary of experimentally observed NMR restraints in different categories. Restraints are classified into different categories based on the sequence separation of the atoms involved.

Description	Value
Total distance restraints	2204
Intra-residue ($ i-j =0$)	509
Sequential ($ i-j =1$)	573
Medium range ($ i-j >1$ and $ i-j <5$)	320
Long range ($ i-j \geq 5$)	802
Inter-chain	0
Hydrogen bond restraints	0
Disulfide bond restraints	0
Total dihedral-angle restraints	0
Number of unmapped restraints	36
Number of restraints per residue	17.6
Number of long range restraints per residue ¹	6.4

¹Long range hydrogen bonds and disulfide bonds are counted as long range restraints while calculating the number of long range restraints per residue

8.2 Residual restraint violations

This section provides the overview of the restraint violations analysis. The violations are binned as small, medium and large violations based on its absolute value. Average number of violations per model is calculated by dividing the total number of violations in each bin by the size of the ensemble.

8.2.1 Average number of distance violations per model

Distance violations less than 0.1 Å are not included in the calculation.

Bins (Å)	Average number of violations per model	Max (Å)
0.1-0.2 (Small)	23.2	0.2
0.2-0.5 (Medium)	4.5	0.48
>0.5 (Large)	0.7	1.83

8.2.2 Average number of dihedral-angle violations per model

Dihedral-angle violations less than 1° are not included in the calculation. There are no dihedral-angle violations

9 Distance violation analysis [\(i\)](#)

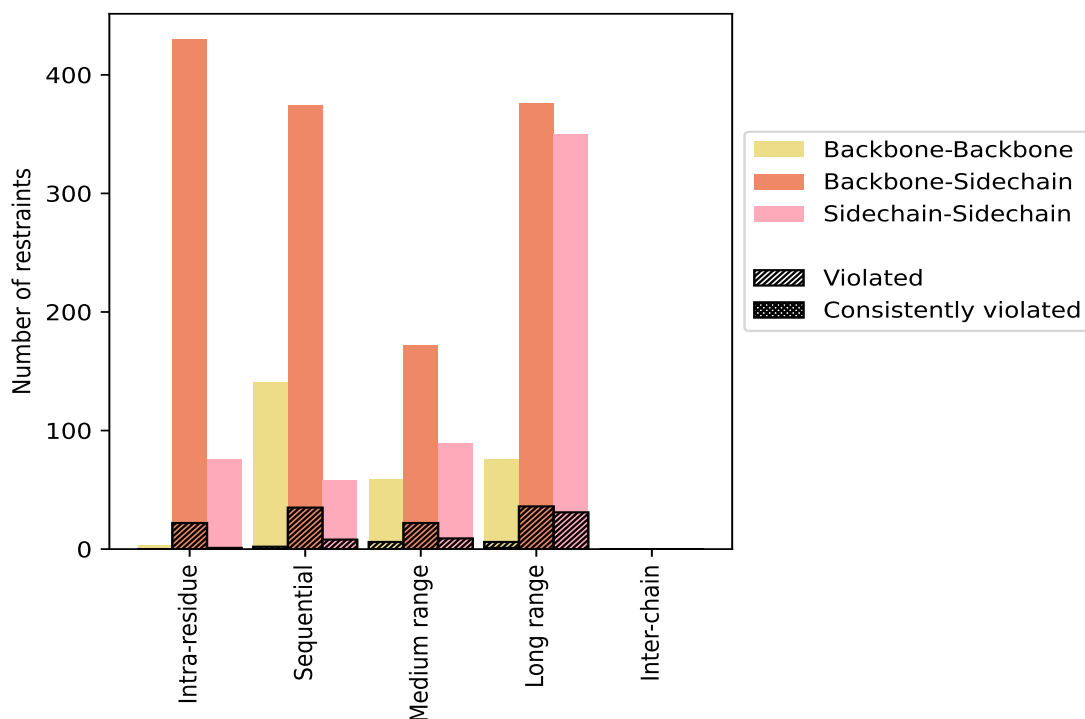
9.1 Summary of distance violations [\(i\)](#)

The following table shows the summary of distance violations in different restraint categories based on the sequence separation of the atoms involved. Each category is further sub-divided into three sub-categories based on the atoms involved. Violations less than 0.1 Å are not included in the statistics.

Restrains type	Count	% ¹	Violated ³			Consistently Violated ⁴		
			Count	% ²	% ¹	Count	% ²	% ¹
Intra-residue ($i-j =0$)	509	23.1	23	4.5	1.0	0	0.0	0.0
Backbone-Backbone	3	0.1	0	0.0	0.0	0	0.0	0.0
Backbone-Sidechain	430	19.5	22	5.1	1.0	0	0.0	0.0
Sidechain-Sidechain	76	3.4	1	1.3	0.0	0	0.0	0.0
Sequential ($i-j =1$)	573	26.0	45	7.9	2.0	0	0.0	0.0
Backbone-Backbone	141	6.4	2	1.4	0.1	0	0.0	0.0
Backbone-Sidechain	374	17.0	35	9.4	1.6	0	0.0	0.0
Sidechain-Sidechain	58	2.6	8	13.8	0.4	0	0.0	0.0
Medium range ($i-j >1$ & $i-j <5$)	320	14.5	37	11.6	1.7	0	0.0	0.0
Backbone-Backbone	59	2.7	6	10.2	0.3	0	0.0	0.0
Backbone-Sidechain	172	7.8	22	12.8	1.0	0	0.0	0.0
Sidechain-Sidechain	89	4.0	9	10.1	0.4	0	0.0	0.0
Long range ($i-j \geq 5$)	802	36.4	73	9.1	3.3	1	0.1	0.0
Backbone-Backbone	76	3.4	6	7.9	0.3	1	1.3	0.0
Backbone-Sidechain	376	17.1	36	9.6	1.6	0	0.0	0.0
Sidechain-Sidechain	350	15.9	31	8.9	1.4	0	0.0	0.0
Inter-chain	0	0.0	0	0.0	0.0	0	0.0	0.0
Backbone-Backbone	0	0.0	0	0.0	0.0	0	0.0	0.0
Backbone-Sidechain	0	0.0	0	0.0	0.0	0	0.0	0.0
Sidechain-Sidechain	0	0.0	0	0.0	0.0	0	0.0	0.0
Hydrogen bond	0	0.0	0	0.0	0.0	0	0.0	0.0
Disulfide bond	0	0.0	0	0.0	0.0	0	0.0	0.0
Total	2204	100.0	178	8.1	8.1	1	0.0	0.0
Backbone-Backbone	279	12.7	14	5.0	0.6	1	0.4	0.0
Backbone-Sidechain	1352	61.3	115	8.5	5.2	0	0.0	0.0
Sidechain-Sidechain	573	26.0	49	8.6	2.2	0	0.0	0.0

¹ percentage calculated with respect to the total number of distance restraints, ² percentage calculated with respect to the number of restraints in a particular restraint category, ³ violated in at least one model, ⁴ violated in all the models

9.1.1 Bar chart : Distribution of distance restraints and violations [i](#)



Violated and consistently violated restraints are shown using different hatch patterns in their respective categories. The hydrogen bonds and disulfid bonds are counted in their appropriate category on the x-axis

9.2 Distance violation statistics for each model [i](#)

The following table provides the distance violation statistics for each model in the ensemble. Violations less than 0.1 Å are not included in the statistics.

Model ID	Number of violations						Mean (Å)	Max (Å)	SD ⁶ (Å)	Median (Å)
	IR ¹	SQ ²	MR ³	LR ⁴	IC ⁵	Total				
1	1	8	5	7	0	21	0.17	0.35	0.06	0.15
2	4	7	6	11	0	28	0.16	0.34	0.06	0.13
3	2	8	8	13	0	31	0.17	0.38	0.07	0.15
4	3	8	9	21	0	41	0.22	1.81	0.3	0.15
5	5	10	4	17	0	36	0.24	1.67	0.28	0.16
6	2	10	8	23	0	43	0.33	1.78	0.43	0.16
7	3	10	6	14	0	33	0.15	0.36	0.06	0.13
8	2	8	4	12	0	26	0.2	0.77	0.13	0.15
9	1	4	3	11	0	19	0.16	0.21	0.03	0.16
10	4	4	4	16	0	28	0.19	1.06	0.17	0.15
11	1	7	4	12	0	24	0.15	0.28	0.04	0.14

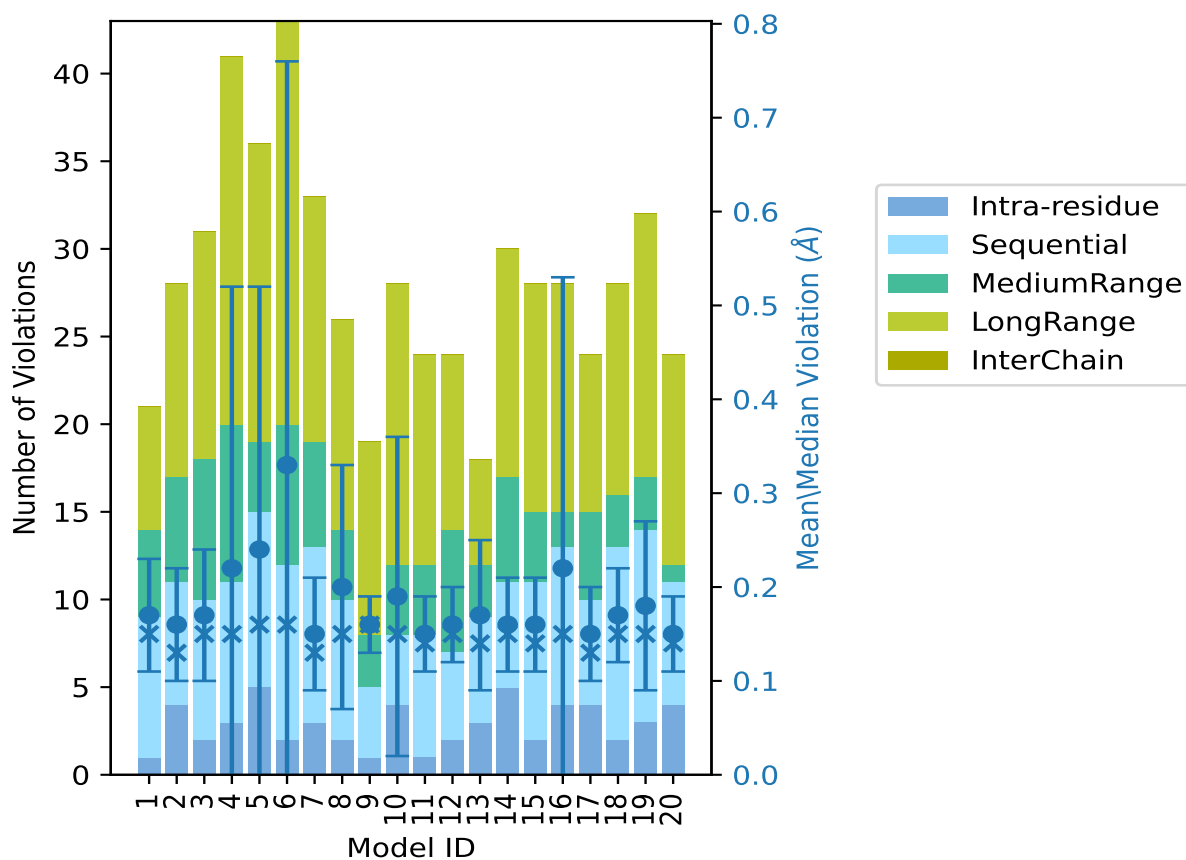
Continued on next page...

Continued from previous page...

Model ID	Number of violations						Mean (Å)	Max (Å)	SD ⁶ (Å)	Median (Å)
	IR ¹	SQ ²	MR ³	LR ⁴	IC ⁵	Total				
12	2	5	7	10	0	24	0.16	0.27	0.04	0.15
13	3	6	3	6	0	18	0.17	0.44	0.08	0.14
14	5	6	6	13	0	30	0.16	0.32	0.05	0.15
15	2	9	4	13	0	28	0.16	0.32	0.05	0.14
16	4	9	2	13	0	28	0.22	1.83	0.31	0.15
17	4	6	5	9	0	24	0.15	0.31	0.05	0.13
18	2	11	3	12	0	28	0.17	0.29	0.05	0.15
19	3	11	3	15	0	32	0.18	0.47	0.09	0.15
20	4	7	1	12	0	24	0.15	0.3	0.04	0.14

¹Intra-residue restraints, ²Sequential restraints, ³Medium range restraints, ⁴Long range restraints, ⁵Inter-chain restraints, ⁶Standard deviation

9.2.1 Bar graph : Distance Violation statistics for each model [\(i\)](#)



The mean(dot),median(x) and the standard deviation are shown in blue with respect to the y axis on the right

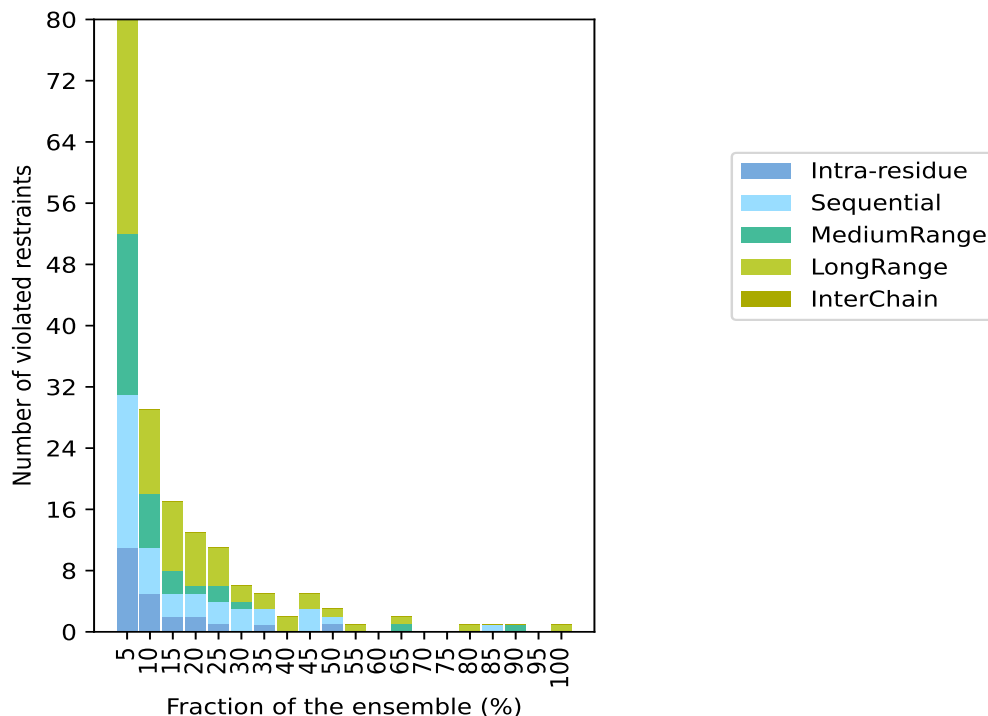
9.3 Distance violation statistics for the ensemble

Violation analysis may find that some restraints are violated in few models and some are violated in most of models. The following table provides this information as number of violated restraints for a given fraction of the ensemble. In total, 2026(IR:486, SQ:528, MR:283, LR:729, IC:0) restraints are not violated in the ensemble.

Number of violated restraints						Fraction of the ensemble	
IR ¹	SQ ²	MR ³	LR ⁴	IC ⁵	Total	Count ⁶	%
11	20	21	28	0	80	1	5.0
5	6	7	11	0	29	2	10.0
2	3	3	9	0	17	3	15.0
2	3	1	7	0	13	4	20.0
1	3	2	5	0	11	5	25.0
0	3	1	2	0	6	6	30.0
1	2	0	2	0	5	7	35.0
0	0	0	2	0	2	8	40.0
0	3	0	2	0	5	9	45.0
1	1	0	1	0	3	10	50.0
0	0	0	1	0	1	11	55.0
0	0	0	0	0	0	12	60.0
0	0	1	1	0	2	13	65.0
0	0	0	0	0	0	14	70.0
0	0	0	0	0	0	15	75.0
0	0	0	1	0	1	16	80.0
0	1	0	0	0	1	17	85.0
0	0	1	0	0	1	18	90.0
0	0	0	0	0	0	19	95.0
0	0	0	1	0	1	20	100.0

¹Intra-residue restraints, ²Sequential restraints, ³Medium range restraints, ⁴Long range restraints, ⁵Inter-chain restraints, ⁶ Number of models with violations

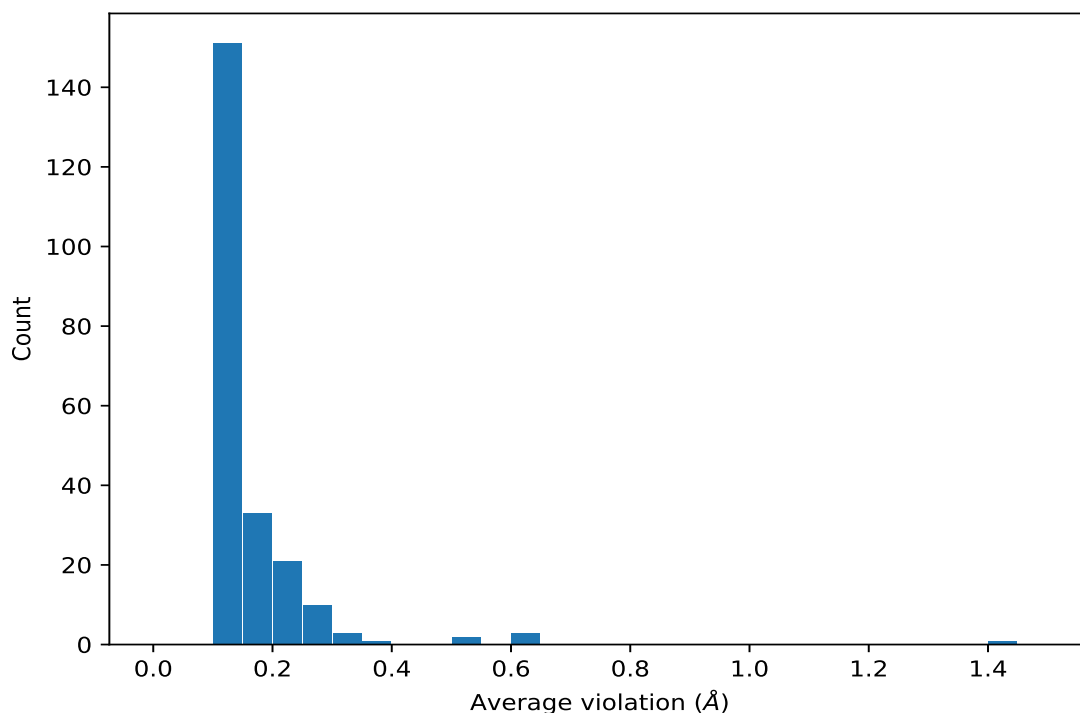
9.3.1 Bar graph : Distance violation statistics for the ensemble [i](#)



9.4 Most violated distance restraints in the ensemble [i](#)

9.4.1 Histogram : Distribution of mean distance violations [i](#)

The following histogram shows the distribution of the average value of the violation. The average is calculated for each restraint that is violated in more than one model over all the violated models in the ensemble



9.4.2 Table: Most violated distance restraints [i](#)

The following table provides the mean and the standard deviation of the violations for the 10 worst performing restraints, sorted by number of violated models and the mean violation value. The Key (restraint list ID, restraint ID) is the unique identifier for a given restraint. Rows with same key represent combinatorial or ambiguous restraints and are counted as a single restraint.

Key	Atom-1	Atom-2	Models ¹	Mean (Å)	SD ¹ (Å)	Median (Å)
(1,1016)	1:A:60:ASN:HA	1:A:71:THR:H	20	0.23	0.05	0.22
(1,113)	1:A:20:ALA:HA	1:A:23:LEU:H	18	0.15	0.03	0.16
(1,1730)	1:A:5:THR:HB	1:A:6:TRP:HD1	17	0.14	0.02	0.13
(1,864)	1:A:99:GLU:H	1:A:111:ILE:HA	16	0.17	0.03	0.16
(1,1602)	1:A:92:LYS:HA	1:A:98:HIS:HB3	13	0.15	0.02	0.15
(1,2166)	1:A:113:PHE:H	1:A:116:VAL:HG11	13	0.13	0.02	0.13
(1,2166)	1:A:113:PHE:H	1:A:116:VAL:HG12	13	0.13	0.02	0.13
(1,2166)	1:A:113:PHE:H	1:A:116:VAL:HG13	13	0.13	0.02	0.13
(1,2166)	1:A:113:PHE:H	1:A:116:VAL:HG21	13	0.13	0.02	0.13
(1,2166)	1:A:113:PHE:H	1:A:116:VAL:HG22	13	0.13	0.02	0.13
(1,2166)	1:A:113:PHE:H	1:A:116:VAL:HG23	13	0.13	0.02	0.13
(1,607)	1:A:52:LYS:H	1:A:73:MET:HE1	11	0.15	0.03	0.15
(1,607)	1:A:52:LYS:H	1:A:73:MET:HE2	11	0.15	0.03	0.15
(1,607)	1:A:52:LYS:H	1:A:73:MET:HE3	11	0.15	0.03	0.15
(1,571)	1:A:121:ARG:H	1:A:121:ARG:HG2	10	0.17	0.04	0.16
(1,1813)	1:A:9:TYR:H	1:A:121:ARG:HG2	10	0.16	0.04	0.15

Continued on next page...

Continued from previous page...

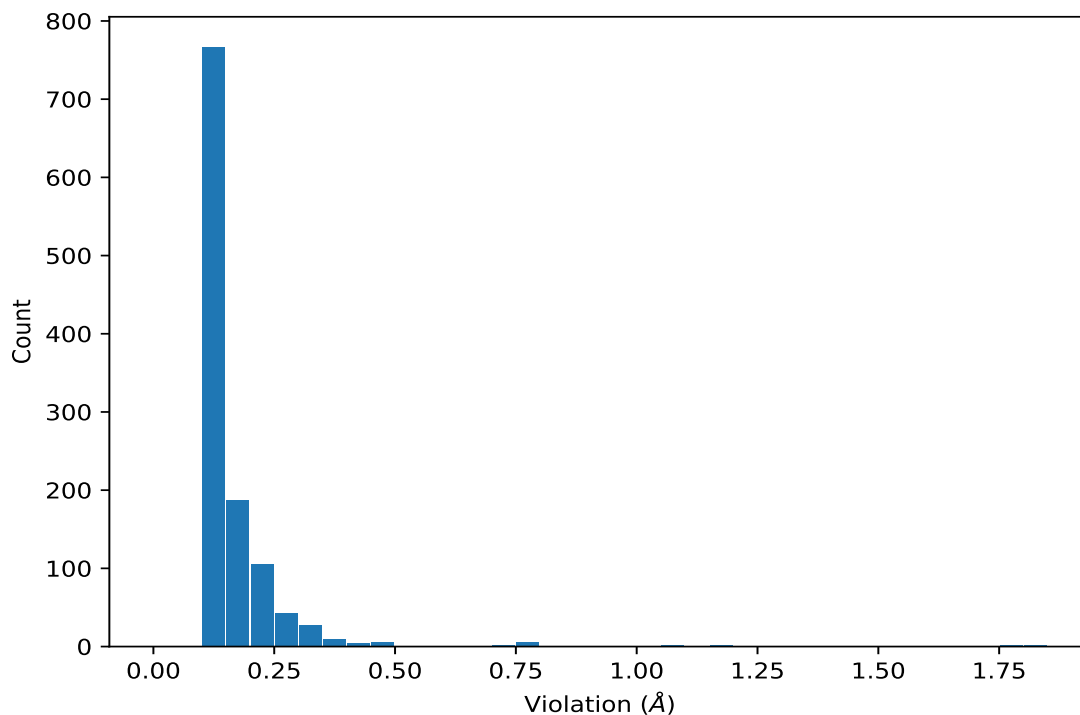
Key	Atom-1	Atom-2	Models ¹	Mean (Å)	SD ¹ (Å)	Median (Å)
(1,1813)	1:A:9:TYR:H	1:A:121:ARG:HG3	10	0.16	0.04	0.15
(1,2115)	1:A:98:HIS:HD2	1:A:99:GLU:HG2	10	0.16	0.03	0.16

¹Number of violated models, ²Standard deviation

9.5 All violated distance restraints [i](#)

9.5.1 Histogram : Distribution of distance violations [i](#)

The following histogram shows the distribution of the absolute value of the violation for all violated restraints in the ensemble.



9.5.2 Table : All distance violations [i](#)

The following table provides the 10 worst performing restraints, sorted by the violation value. The Key (restraint list ID, restraint ID) is the unique identifier for a given restraint. Rows with same key represent combinatorial or ambiguous restraints and are counted as a single restraint.

Key	Atom-1	Atom-2	Model ID	Violation (Å)
(1,576)	1:A:8:VAL:H	1:A:123:LYS:HG3	16	1.83
(1,576)	1:A:8:VAL:H	1:A:123:LYS:HG3	4	1.81
(1,576)	1:A:8:VAL:H	1:A:123:LYS:HG3	6	1.78

Continued on next page...

Continued from previous page...

Key	Atom-1	Atom-2	Model ID	Violation (Å)
(1,1749)	1:A:81:THR:HB	1:A:83:HIS:HD2	6	1.78
(1,576)	1:A:8:VAL:H	1:A:123:LYS:HG3	5	1.67
(1,1751)	1:A:83:HIS:HD2	1:A:90:VAL:HB	6	1.55
(1,953)	1:A:83:HIS:H	1:A:90:VAL:HB	6	1.4
(1,1477)	1:A:88:LYS:HA	1:A:88:LYS:HD2	4	1.18
(1,1477)	1:A:88:LYS:HA	1:A:88:LYS:HD3	4	1.18
(1,1477)	1:A:88:LYS:HA	1:A:88:LYS:HD2	10	1.06
(1,1477)	1:A:88:LYS:HA	1:A:88:LYS:HD3	10	1.06
(1,739)	1:A:117:THR:HG21	1:A:118:LEU:H	8	0.77

10 Dihedral-angle violation analysis

No dihedral-angle restraints found