



# wwPDB X-ray Structure Validation Summary Report

Jan 2, 2024 – 02:15 pm GMT

PDB ID : 5LFV  
Title : Crystal structure of glycosylated Myelin-associated glycoprotein (MAG) Ig1-3  
with soaked trisaccharide ligand  
Authors : Pronker, M.F.; Janssen, B.J.C.  
Deposited on : 2016-07-04  
Resolution : 2.30 Å (reported)

This is a wwPDB X-ray Structure Validation Summary Report for a publicly released PDB entry.

We welcome your comments at [validation@mail.wwpdb.org](mailto:validation@mail.wwpdb.org)

A user guide is available at

<https://www.wwpdb.org/validation/2017/XrayValidationReportHelp>

with specific help available everywhere you see the  symbol.

The types of validation reports are described at

<http://www.wwpdb.org/validation/2017/FAQs#types>.

---

The following versions of software and data (see [references](#) ) were used in the production of this report:

MolProbity : 4.02b-467  
Mogul : 1.8.4, CSD as541be (2020)  
Xtriage (Phenix) : 1.13  
EDS : 2.36  
Percentile statistics : 20191225.v01 (using entries in the PDB archive December 25th 2019)  
Refmac : 5.8.0158  
CCP4 : 7.0.044 (Gargrove)  
Ideal geometry (proteins) : Engh & Huber (2001)  
Ideal geometry (DNA, RNA) : Parkinson et al. (1996)  
Validation Pipeline (wwPDB-VP) : 2.36

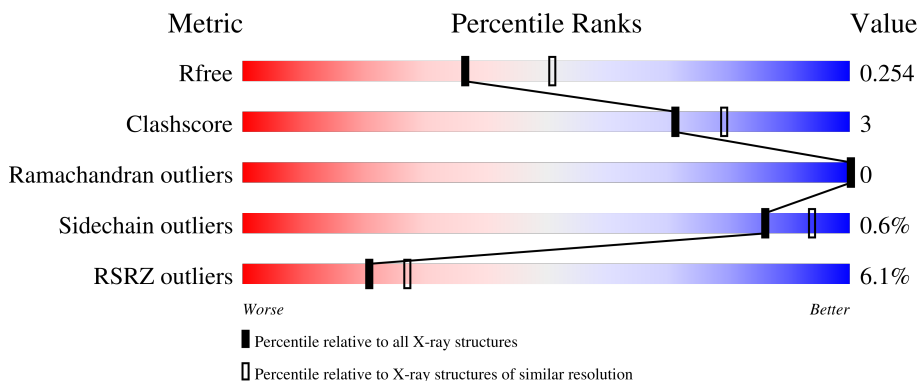
# 1 Overall quality at a glance i

The following experimental techniques were used to determine the structure:

*X-RAY DIFFRACTION*

The reported resolution of this entry is 2.30 Å.

Percentile scores (ranging between 0-100) for global validation metrics of the entry are shown in the following graphic. The table shows the number of entries on which the scores are based.



Metric	Whole archive (#Entries)	Similar resolution (#Entries, resolution range(Å))
$R_{free}$	130704	5042 (2.30-2.30)
Clashscore	141614	5643 (2.30-2.30)
Ramachandran outliers	138981	5575 (2.30-2.30)
Sidechain outliers	138945	5575 (2.30-2.30)
RSRZ outliers	127900	4938 (2.30-2.30)

The table below summarises the geometric issues observed across the polymeric chains and their fit to the electron density. The red, orange, yellow and green segments of the lower bar indicate the fraction of residues that contain outliers for  $\geq 3$ , 2, 1 and 0 types of geometric quality criteria respectively. A grey segment represents the fraction of residues that are not modelled. The numeric value for each fraction is indicated below the corresponding segment, with a dot representing fractions  $\leq 5\%$ . The upper red bar (where present) indicates the fraction of residues that have poor fit to the electron density. The numeric value is given above the bar.

Mol	Chain	Length	Quality of chain
1	A	317	<div style="display: flex; align-items: center;"> <div style="width: 4%; height: 10px; background-color: red; margin-right: 5px;"></div> <div style="width: 87%; height: 10px; background-color: green; margin-right: 5px;"></div> <div style="width: 10%; height: 10px; background-color: yellow; margin-right: 5px;"></div> <div style="width: 1%; height: 10px; background-color: grey; margin-right: 5px;"></div> <div style="width: 1%; height: 10px; background-color: grey;"></div> </div> <p style="margin-left: 40px;">4%      87%      10%      .</p>
1	B	317	<div style="display: flex; align-items: center;"> <div style="width: 8%; height: 10px; background-color: red; margin-right: 5px;"></div> <div style="width: 87%; height: 10px; background-color: green; margin-right: 5px;"></div> <div style="width: 11%; height: 10px; background-color: yellow; margin-right: 5px;"></div> <div style="width: 1%; height: 10px; background-color: grey; margin-right: 5px;"></div> <div style="width: 1%; height: 10px; background-color: grey;"></div> </div> <p style="margin-left: 40px;">8%      87%      11%      .</p>
2	C	4	<div style="display: flex; align-items: center;"> <div style="width: 75%; height: 10px; background-color: green; margin-right: 5px;"></div> <div style="width: 25%; height: 10px; background-color: yellow; margin-right: 5px;"></div> </div> <p style="margin-left: 40px;">75%      25%</p>
2	D	4	<div style="display: flex; align-items: center;"> <div style="width: 25%; height: 10px; background-color: green; margin-right: 5px;"></div> <div style="width: 75%; height: 10px; background-color: yellow; margin-right: 5px;"></div> </div> <p style="margin-left: 40px;">25%      75%</p>
3	E	3	<div style="display: flex; align-items: center;"> <div style="width: 33%; height: 10px; background-color: green; margin-right: 5px;"></div> <div style="width: 67%; height: 10px; background-color: yellow; margin-right: 5px;"></div> </div> <p style="margin-left: 40px;">33%      67%</p>

## 2 Entry composition [i](#)

There are 8 unique types of molecules in this entry. The entry contains 5095 atoms, of which 0 are hydrogens and 0 are deuteriums.

In the tables below, the ZeroOcc column contains the number of atoms modelled with zero occupancy, the AltConf column contains the number of residues with at least one atom in alternate conformation and the Trace column contains the number of residues modelled with at most 2 atoms.

- Molecule 1 is a protein called Myelin-associated glycoprotein.

Mol	Chain	Residues	Atoms					ZeroOcc	AltConf	Trace
			Total	C	N	O	S			
1	A	307	2375	1507	400	454	14	0	0	0
1	B	311	2410	1532	405	459	14	0	0	0

There are 22 discrepancies between the modelled and reference sequences:

Chain	Residue	Modelled	Actual	Comment	Reference
A	18	GLY	-	expression tag	UNP P20917
A	19	SER	-	expression tag	UNP P20917
A	326	ALA	-	expression tag	UNP P20917
A	327	ALA	-	expression tag	UNP P20917
A	328	ALA	-	expression tag	UNP P20917
A	329	HIS	-	expression tag	UNP P20917
A	330	HIS	-	expression tag	UNP P20917
A	331	HIS	-	expression tag	UNP P20917
A	332	HIS	-	expression tag	UNP P20917
A	333	HIS	-	expression tag	UNP P20917
A	334	HIS	-	expression tag	UNP P20917
B	18	GLY	-	expression tag	UNP P20917
B	19	SER	-	expression tag	UNP P20917
B	326	ALA	-	expression tag	UNP P20917
B	327	ALA	-	expression tag	UNP P20917
B	328	ALA	-	expression tag	UNP P20917
B	329	HIS	-	expression tag	UNP P20917
B	330	HIS	-	expression tag	UNP P20917
B	331	HIS	-	expression tag	UNP P20917
B	332	HIS	-	expression tag	UNP P20917
B	333	HIS	-	expression tag	UNP P20917
B	334	HIS	-	expression tag	UNP P20917

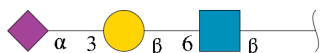
- Molecule 2 is an oligosaccharide called alpha-D-mannopyranose-(1-6)-beta-D-mannopyranose-(1-4)-2-acetamido-2-deoxy-beta-D-glucopyranose-(1-4)-2-acetamido-2-deoxy-beta-D-glucopyranose

pyranose.



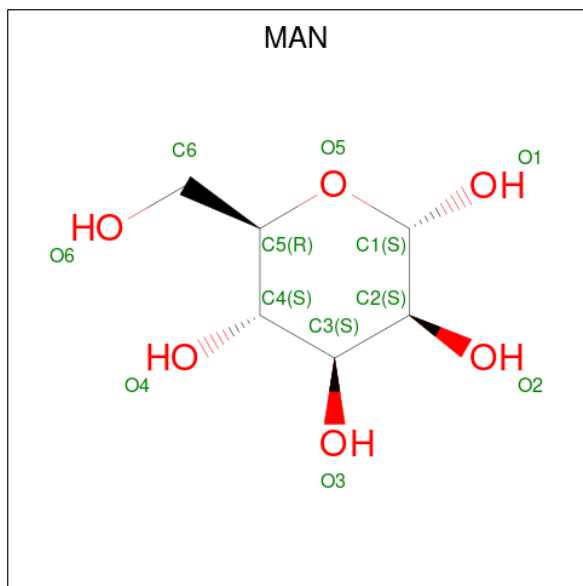
Mol	Chain	Residues	Atoms			ZeroOcc	AltConf	Trace	
2	C	4	Total	C	N	O	0	0	0
			50	28	2	20			
2	D	4	Total	C	N	O	0	0	0
			50	28	2	20			

- Molecule 3 is an oligosaccharide called N-acetyl-alpha-neuraminic acid-(2-3)-beta-D-galactopyranose-(1-6)-2-acetamido-2-deoxy-beta-D-glucopyranose.



Mol	Chain	Residues	Atoms			ZeroOcc	AltConf	Trace	
3	E	3	Total	C	N	O	0	0	1
			33	18	1	14			

- Molecule 4 is alpha-D-mannopyranose (three-letter code: MAN) (formula: C<sub>6</sub>H<sub>12</sub>O<sub>6</sub>).



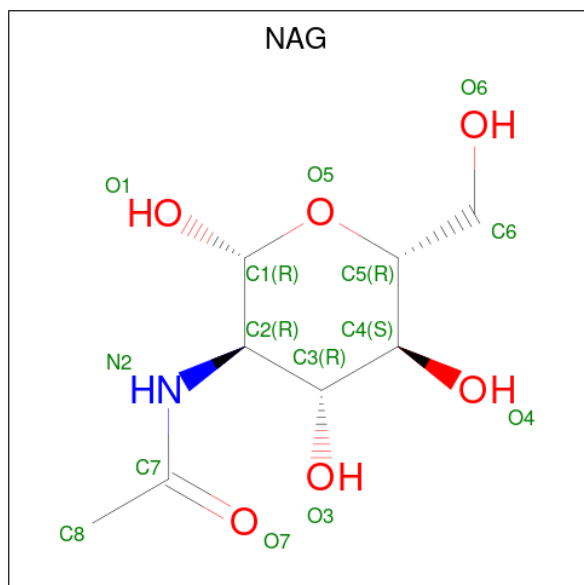
Mol	Chain	Residues	Atoms			ZeroOcc	AltConf
4	A	1	Total	C	O	0	0
			11	6	5		

*Continued on next page...*

Continued from previous page...

Mol	Chain	Residues	Atoms			ZeroOcc	AltConf
4	B	1	Total	C	O	0	0
			11	6	5		

- Molecule 5 is 2-acetamido-2-deoxy-beta-D-glucopyranose (three-letter code: NAG) (formula:  $C_8H_{15}NO_6$ ).



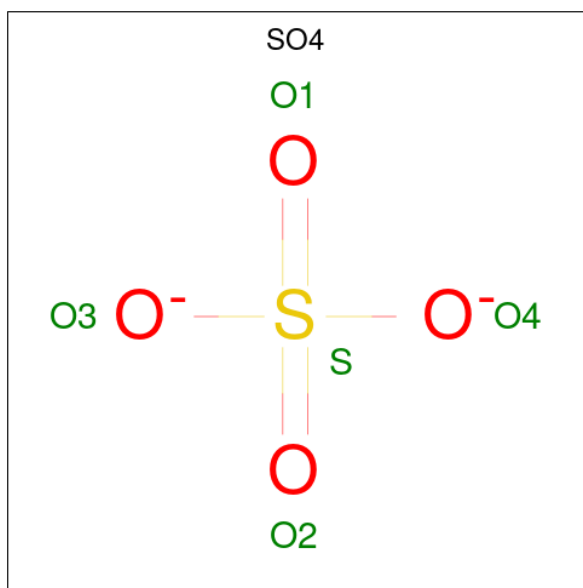
Mol	Chain	Residues	Atoms				ZeroOcc	AltConf
5	A	1	Total	C	N	O	0	0
			14	8	1	5		
5	A	1	Total	C	N	O	0	0
			14	8	1	5		
5	A	1	Total	C	N	O	0	0
			14	8	1	5		
5	B	1	Total	C	N	O	0	0
			14	8	1	5		
5	B	1	Total	C	N	O	0	0
			14	8	1	5		

- Molecule 6 is GLYCEROL (three-letter code: GOL) (formula:  $C_3H_8O_3$ ).



Mol	Chain	Residues	Atoms			ZeroOcc	AltConf
6	A	1	Total	C	O	0	0
			6	3	3		

- Molecule 7 is SULFATE ION (three-letter code: SO<sub>4</sub>) (formula: O<sub>4</sub>S).



Mol	Chain	Residues	Atoms			ZeroOcc	AltConf
7	A	1	Total	O	S	0	0
			5	4	1		
7	A	1	Total	O	S	0	0
			5	4	1		
7	A	1	Total	O	S	0	0
			5	4	1		

*Continued on next page...*

*Continued from previous page...*

Mol	Chain	Residues	Atoms			ZeroOcc	AltConf
7	A	1	Total	O	S	0	0
			5	4	1		
7	A	1	Total	O	S	0	0
			5	4	1		
7	B	1	Total	O	S	0	0
			5	4	1		
7	B	1	Total	O	S	0	0
			5	4	1		
7	B	1	Total	O	S	0	0
			5	4	1		

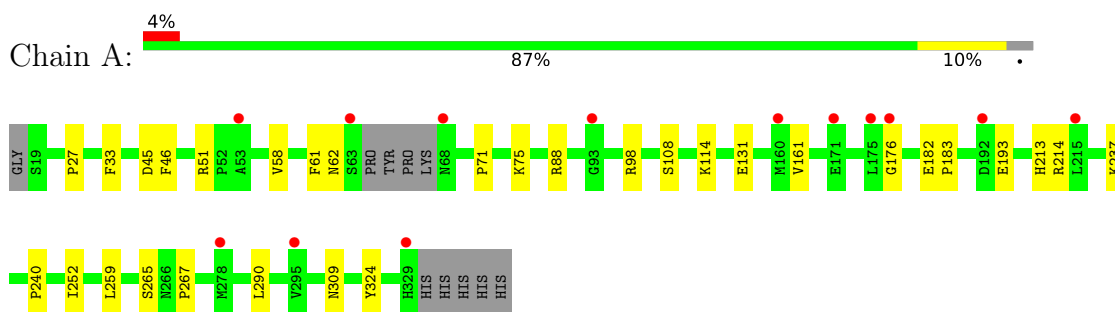
- Molecule 8 is water.

Mol	Chain	Residues	Atoms		ZeroOcc	AltConf
8	A	25	Total	O	0	0
			25	25		
8	B	9	Total	O	0	0
			9	9		

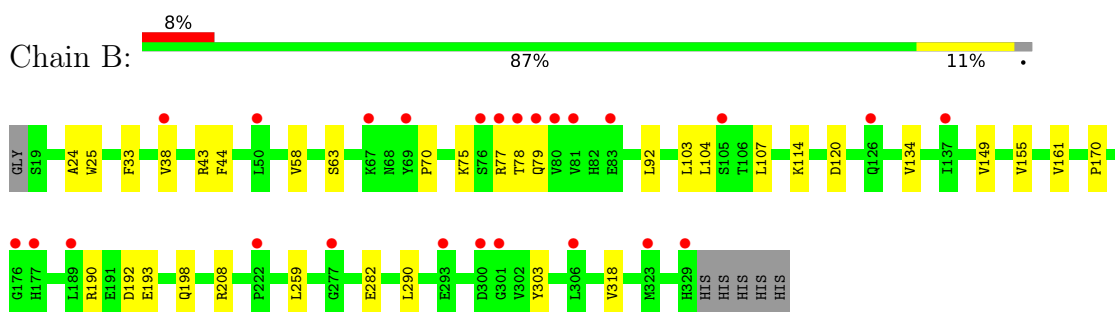
### 3 Residue-property plots [i](#)

These plots are drawn for all protein, RNA, DNA and oligosaccharide chains in the entry. The first graphic for a chain summarises the proportions of the various outlier classes displayed in the second graphic. The second graphic shows the sequence view annotated by issues in geometry and electron density. Residues are color-coded according to the number of geometric quality criteria for which they contain at least one outlier: green = 0, yellow = 1, orange = 2 and red = 3 or more. A red dot above a residue indicates a poor fit to the electron density ( $RSRZ > 2$ ). Stretches of 2 or more consecutive residues without any outlier are shown as a green connector. Residues present in the sample, but not in the model, are shown in grey.

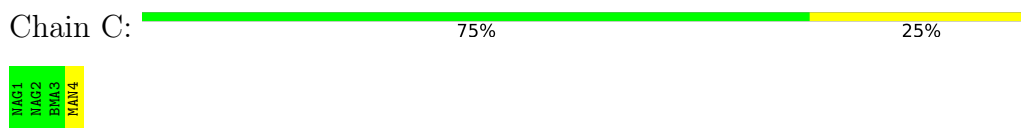
- Molecule 1: Myelin-associated glycoprotein



- Molecule 1: Myelin-associated glycoprotein



- Molecule 2: alpha-D-mannopyranose-(1-6)-beta-D-mannopyranose-(1-4)-2-acetamido-2-deoxy-beta-D-glucopyranose-(1-4)-2-acetamido-2-deoxy-beta-D-glucopyranose



- Molecule 2: alpha-D-mannopyranose-(1-6)-beta-D-mannopyranose-(1-4)-2-acetamido-2-deoxy-beta-D-glucopyranose-(1-4)-2-acetamido-2-deoxy-beta-D-glucopyranose





- Molecule 3: N-acetyl-alpha-neuraminic acid-(2-3)-beta-D-galactopyranose-(1-6)-2-acetamido-2-deoxy-beta-D-glucopyranose

Chain E:  33% 67%

 NAG1  
GAL2  
SIA3

## 4 Data and refinement statistics

Property	Value	Source
Space group	P 1	Depositor
Cell constants a, b, c, $\alpha$ , $\beta$ , $\gamma$	43.60Å 60.12Å 79.47Å 71.86° 86.51° 82.95°	Depositor
Resolution (Å)	56.79 – 2.30 56.78 – 2.30	Depositor EDS
% Data completeness (in resolution range)	97.2 (56.79-2.30) 90.6 (56.78-2.30)	Depositor EDS
$R_{merge}$	0.16	Depositor
$R_{sym}$	(Not available)	Depositor
$\langle I/\sigma(I) \rangle$ <sup>1</sup>	1.34 (at 2.29Å)	Xtrriage
Refinement program	PHENIX 1.9_1692	Depositor
R, $R_{free}$	0.224 , 0.254 0.227 , 0.254	Depositor DCC
$R_{free}$ test set	1648 reflections (5.00%)	wwPDB-VP
Wilson B-factor (Å <sup>2</sup> )	46.1	Xtrriage
Anisotropy	0.474	Xtrriage
Bulk solvent $k_{sol}$ (e/Å <sup>3</sup> ), $B_{sol}$ (Å <sup>2</sup> )	0.34 , 47.7	EDS
L-test for twinning <sup>2</sup>	$\langle  L  \rangle = 0.50$ , $\langle L^2 \rangle = 0.33$	Xtrriage
Estimated twinning fraction	No twinning to report.	Xtrriage
$F_o, F_c$ correlation	0.94	EDS
Total number of atoms	5095	wwPDB-VP
Average B, all atoms (Å <sup>2</sup> )	71.0	wwPDB-VP

Xtrriage's analysis on translational NCS is as follows: *The largest off-origin peak in the Patterson function is 6.64% of the height of the origin peak. No significant pseudotranslation is detected.*

<sup>1</sup>Intensities estimated from amplitudes.

<sup>2</sup>Theoretical values of  $\langle |L| \rangle$ ,  $\langle L^2 \rangle$  for acentric reflections are 0.5, 0.333 respectively for untwinned datasets, and 0.375, 0.2 for perfectly twinned datasets.

## 5 Model quality

### 5.1 Standard geometry

Bond lengths and bond angles in the following residue types are not validated in this section: SIA, GAL, GOL, MAN, BMA, SO4, NAG

The Z score for a bond length (or angle) is the number of standard deviations the observed value is removed from the expected value. A bond length (or angle) with  $|Z| > 5$  is considered an outlier worth inspection. RMSZ is the root-mean-square of all Z scores of the bond lengths (or angles).

Mol	Chain	Bond lengths		Bond angles	
		RMSZ	# Z  >5	RMSZ	# Z  >5
1	A	0.20	0/2439	0.37	0/3332
1	B	0.21	0/2478	0.38	0/3388
All	All	0.21	0/4917	0.37	0/6720

There are no bond length outliers.

There are no bond angle outliers.

There are no chirality outliers.

There are no planarity outliers.

### 5.2 Too-close contacts

In the following table, the Non-H and H(model) columns list the number of non-hydrogen atoms and hydrogen atoms in the chain respectively. The H(added) column lists the number of hydrogen atoms added and optimized by MolProbity. The Clashes column lists the number of clashes within the asymmetric unit, whereas Symm-Clashes lists symmetry-related clashes.

Mol	Chain	Non-H	H(model)	H(added)	Clashes	Symm-Clashes
1	A	2375	0	2267	16	0
1	B	2410	0	2305	19	0
2	C	50	0	43	0	0
2	D	50	0	43	1	0
3	E	33	0	26	0	0
4	A	11	0	10	0	0
4	B	11	0	10	0	0
5	A	42	0	39	0	0
5	B	28	0	26	0	0
6	A	6	0	8	0	0
7	A	25	0	0	0	0

*Continued on next page...*

Continued from previous page...

Mol	Chain	Non-H	H(model)	H(added)	Clashes	Symm-Clashes
7	B	20	0	0	0	0
8	A	25	0	0	0	0
8	B	9	0	0	0	0
All	All	5095	0	4777	34	0

The all-atom clashscore is defined as the number of clashes found per 1000 atoms (including hydrogen atoms). The all-atom clashscore for this structure is 3.

The worst 5 of 34 close contacts within the same asymmetric unit are listed below, sorted by their clash magnitude.

Atom-1	Atom-2	Interatomic distance (Å)	Clash overlap (Å)
1:A:61:PHE:HB3	1:A:71:PRO:HG2	1.75	0.67
1:B:63:SER:HB2	1:B:70:PRO:HB3	1.76	0.67
1:B:92:LEU:HD11	1:B:103:LEU:HD12	1.79	0.64
1:A:62:ASN:HB3	1:A:114:LYS:H	1.64	0.63
1:A:45:ASP:OD1	1:A:98:ARG:NH1	2.33	0.61

There are no symmetry-related clashes.

## 5.3 Torsion angles [i](#)

### 5.3.1 Protein backbone [i](#)

In the following table, the Percentiles column shows the percent Ramachandran outliers of the chain as a percentile score with respect to all X-ray entries followed by that with respect to entries of similar resolution.

The Analysed column shows the number of residues for which the backbone conformation was analysed, and the total number of residues.

Mol	Chain	Analysed	Favoured	Allowed	Outliers	Percentiles	
1	A	303/317 (96%)	294 (97%)	9 (3%)	0	100	100
1	B	309/317 (98%)	293 (95%)	16 (5%)	0	100	100
All	All	612/634 (96%)	587 (96%)	25 (4%)	0	100	100

There are no Ramachandran outliers to report.

### 5.3.2 Protein sidechains [i](#)

In the following table, the Percentiles column shows the percent sidechain outliers of the chain as a percentile score with respect to all X-ray entries followed by that with respect to entries of similar resolution.

The Analysed column shows the number of residues for which the sidechain conformation was analysed, and the total number of residues.

Mol	Chain	Analysed	Rotameric	Outliers	Percentiles	
1	A	261/270 (97%)	259 (99%)	2 (1%)	81	91
1	B	265/270 (98%)	264 (100%)	1 (0%)	91	96
All	All	526/540 (97%)	523 (99%)	3 (1%)	86	94

All (3) residues with a non-rotameric sidechain are listed below:

Mol	Chain	Res	Type
1	A	131	GLU
1	A	214	ARG
1	B	208	ARG

Sometimes sidechains can be flipped to improve hydrogen bonding and reduce clashes. There are no such sidechains identified.

### 5.3.3 RNA [i](#)

There are no RNA molecules in this entry.

## 5.4 Non-standard residues in protein, DNA, RNA chains [i](#)

There are no non-standard protein/DNA/RNA residues in this entry.

## 5.5 Carbohydrates [i](#)

11 monosaccharides are modelled in this entry.

In the following table, the Counts columns list the number of bonds (or angles) for which Mogul statistics could be retrieved, the number of bonds (or angles) that are observed in the model and the number of bonds (or angles) that are defined in the Chemical Component Dictionary. The Link column lists molecule types, if any, to which the group is linked. The Z score for a bond length (or angle) is the number of standard deviations the observed value is removed from the expected value. A bond length (or angle) with  $|Z| > 2$  is considered an outlier worth inspection. RMSZ is the root-mean-square of all Z scores of the bond lengths (or angles).

Mol	Type	Chain	Res	Link	Bond lengths			Bond angles		
					Counts	RMSZ	# Z  > 2	Counts	RMSZ	# Z  > 2
2	NAG	C	1	2,1	14,14,15	0.25	0	17,19,21	0.43	0
2	NAG	C	2	2	14,14,15	0.28	0	17,19,21	0.33	0
2	BMA	C	3	2	11,11,12	0.68	0	15,15,17	0.79	0
2	MAN	C	4	2	11,11,12	0.70	0	15,15,17	1.50	3 (20%)
2	NAG	D	1	2,1	14,14,15	0.27	0	17,19,21	0.46	0
2	NAG	D	2	2	14,14,15	0.33	0	17,19,21	0.39	0
2	BMA	D	3	2	11,11,12	0.75	0	15,15,17	0.88	1 (6%)
2	MAN	D	4	2	11,11,12	0.77	0	15,15,17	0.96	1 (6%)
3	NAG	E	1	3	1,1,15	0.53	0	-		
3	GAL	E	2	3	11,11,12	1.84	2 (18%)	15,15,17	1.10	1 (6%)
3	SIA	E	3	3	20,20,21	2.13	6 (30%)	24,28,31	1.29	4 (16%)

In the following table, the Chirals column lists the number of chiral outliers, the number of chiral centers analysed, the number of these observed in the model and the number defined in the Chemical Component Dictionary. Similar counts are reported in the Torsion and Rings columns. '-' means no outliers of that kind were identified.

Mol	Type	Chain	Res	Link	Chirals	Torsions	Rings
2	NAG	C	1	2,1	-	2/6/23/26	0/1/1/1
2	NAG	C	2	2	-	2/6/23/26	0/1/1/1
2	BMA	C	3	2	-	1/2/19/22	0/1/1/1
2	MAN	C	4	2	-	2/2/19/22	0/1/1/1
2	NAG	D	1	2,1	-	0/6/23/26	0/1/1/1
2	NAG	D	2	2	-	0/6/23/26	0/1/1/1
2	BMA	D	3	2	-	1/2/19/22	0/1/1/1
2	MAN	D	4	2	-	2/2/19/22	0/1/1/1
3	GAL	E	2	3	-	1/2/19/22	0/1/1/1
3	SIA	E	3	3	-	0/18/34/38	0/1/1/1

The worst 5 of 8 bond length outliers are listed below:

Mol	Chain	Res	Type	Atoms	Z	Observed(Å)	Ideal(Å)
3	E	3	SIA	C4-C5	-5.16	1.48	1.53
3	E	3	SIA	O6-C2	4.32	1.49	1.43
3	E	2	GAL	O3-C3	3.61	1.51	1.43
3	E	3	SIA	C3-C4	-3.41	1.46	1.52
3	E	2	GAL	C2-C3	-3.32	1.47	1.52

The worst 5 of 10 bond angle outliers are listed below:

Mol	Chain	Res	Type	Atoms	Z	Observed(°)	Ideal(°)
2	C	4	MAN	C1-O5-C5	3.43	116.83	112.19
2	C	4	MAN	O5-C1-C2	2.95	115.32	110.77
3	E	3	SIA	O1B-C1-C2	2.59	120.42	113.03
3	E	3	SIA	C11-C10-N5	2.34	120.07	116.10
3	E	2	GAL	C1-C2-C3	2.30	112.50	109.67

There are no chirality outliers.

5 of 11 torsion outliers are listed below:

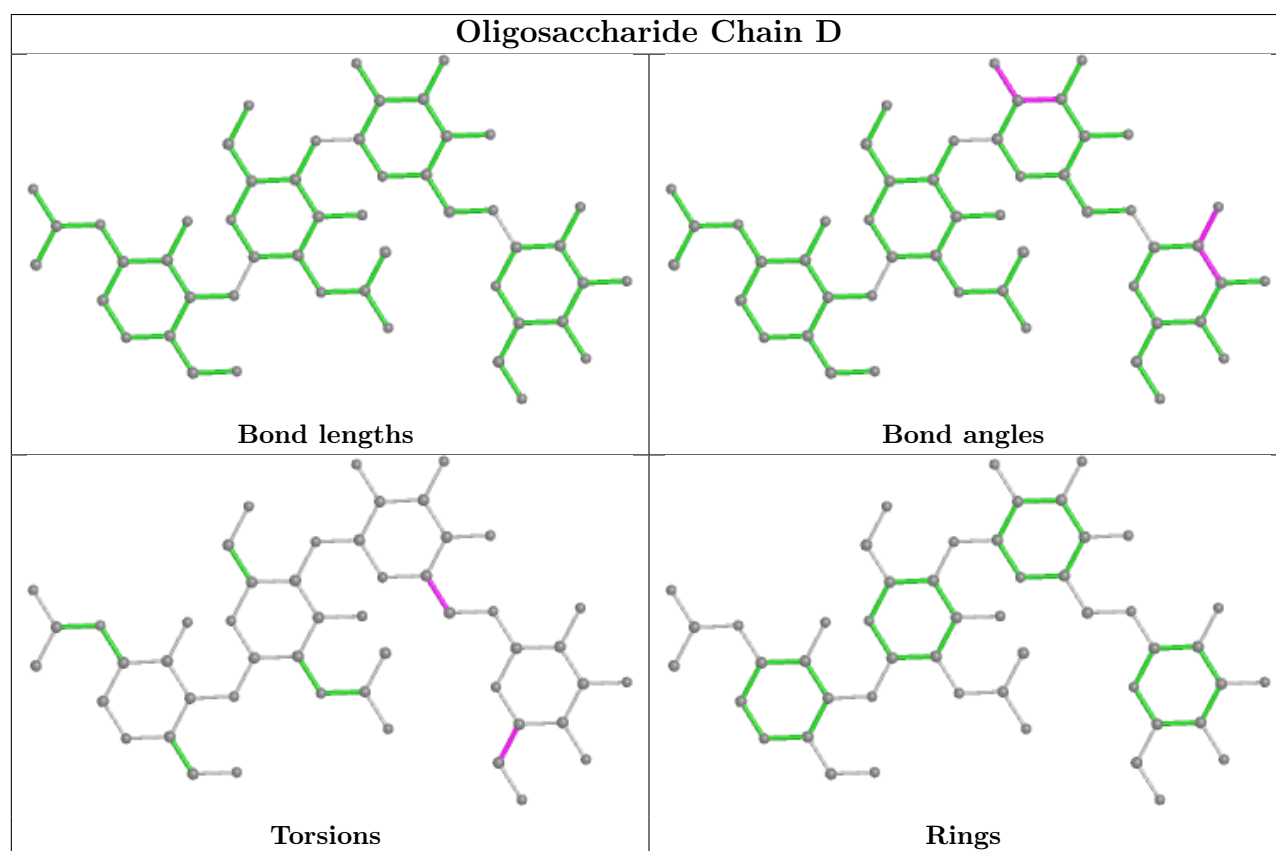
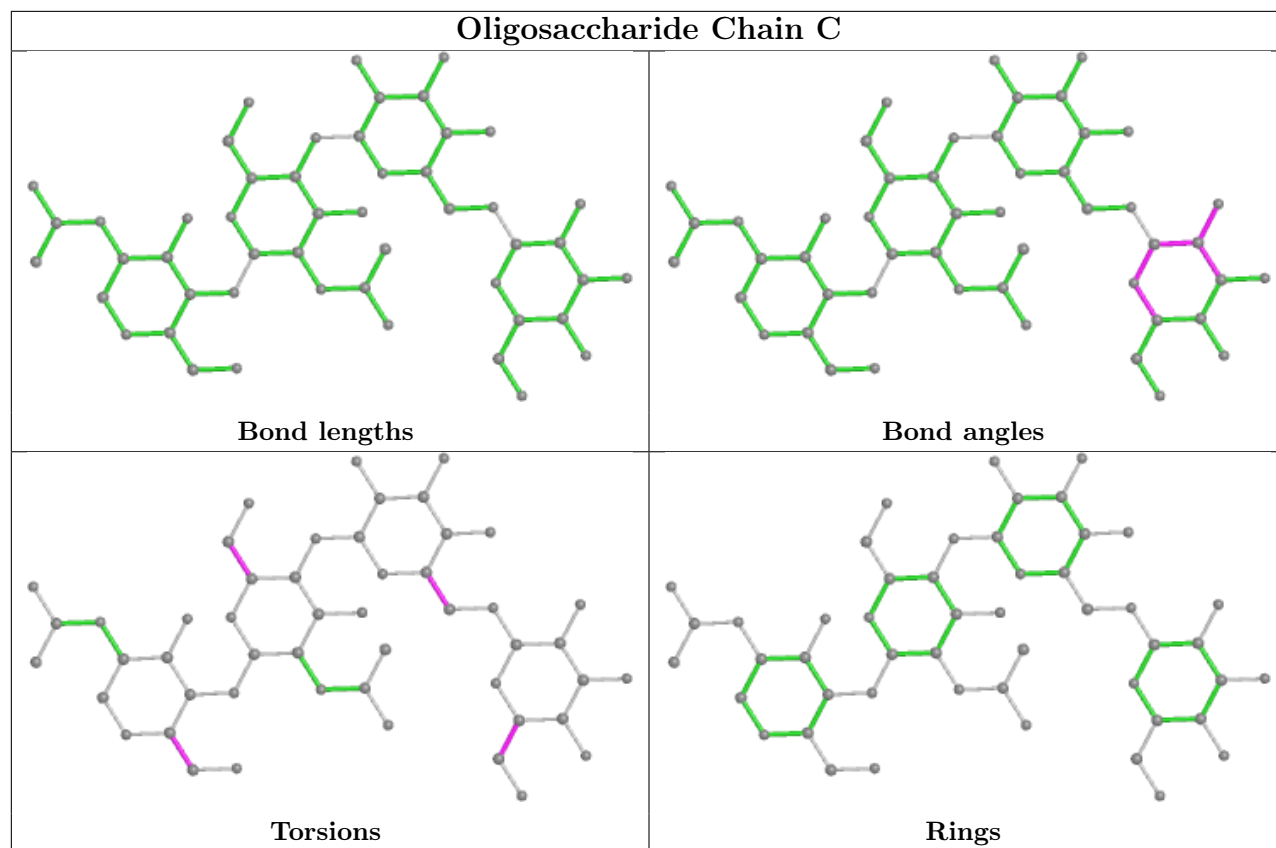
Mol	Chain	Res	Type	Atoms
2	C	4	MAN	O5-C5-C6-O6
2	D	4	MAN	O5-C5-C6-O6
2	C	4	MAN	C4-C5-C6-O6
2	D	4	MAN	C4-C5-C6-O6
2	C	2	NAG	C4-C5-C6-O6

There are no ring outliers.

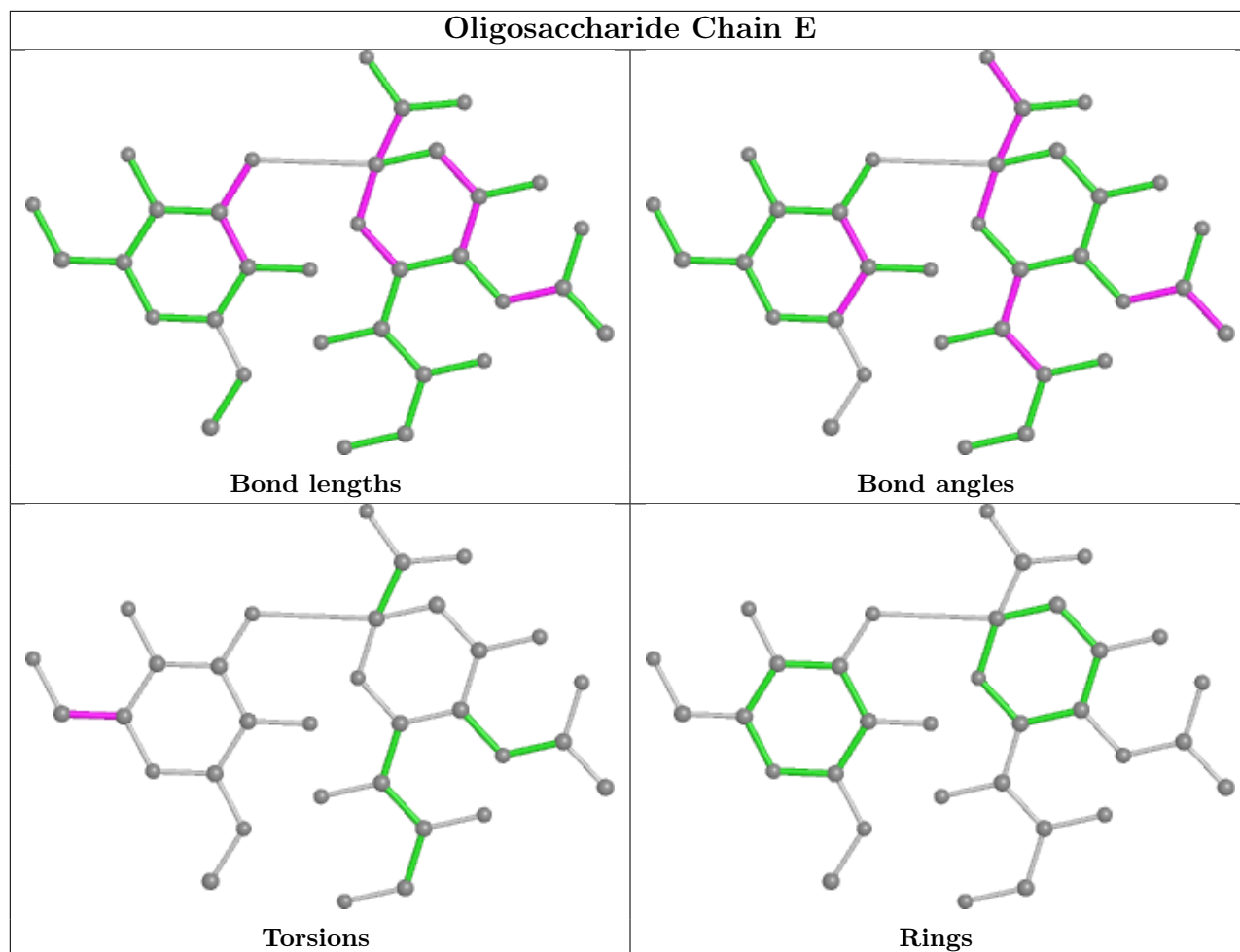
1 monomer is involved in 1 short contact:

Mol	Chain	Res	Type	Clashes	Symm-Clashes
2	D	1	NAG	1	0

The following is a two-dimensional graphical depiction of Mogul quality analysis of bond lengths, bond angles, torsion angles, and ring geometry for oligosaccharide.







## 5.6 Ligand geometry [i](#)

17 ligands are modelled in this entry.

In the following table, the Counts columns list the number of bonds (or angles) for which Mogul statistics could be retrieved, the number of bonds (or angles) that are observed in the model and the number of bonds (or angles) that are defined in the Chemical Component Dictionary. The Link column lists molecule types, if any, to which the group is linked. The Z score for a bond length (or angle) is the number of standard deviations the observed value is removed from the expected value. A bond length (or angle) with  $|Z| > 2$  is considered an outlier worth inspection. RMSZ is the root-mean-square of all Z scores of the bond lengths (or angles).

Mol	Type	Chain	Res	Link	Bond lengths			Bond angles		
					Counts	RMSZ	$\# Z  > 2$	Counts	RMSZ	$\# Z  > 2$
5	NAG	A	407	1	14,14,15	0.22	0	17,19,21	0.38	0
7	SO4	A	411	-	4,4,4	0.14	0	6,6,6	0.05	0
5	NAG	B	407	1	14,14,15	0.25	0	17,19,21	0.43	0
7	SO4	A	412	-	4,4,4	0.14	0	6,6,6	0.05	0
7	SO4	B	408	-	4,4,4	0.14	0	6,6,6	0.05	0
7	SO4	B	411	-	4,4,4	0.16	0	6,6,6	0.25	0

Mol	Type	Chain	Res	Link	Bond lengths			Bond angles		
					Counts	RMSZ	# Z  > 2	Counts	RMSZ	# Z  > 2
4	MAN	A	401	1	11,11,12	0.97	1 (9%)	15,15,17	1.23	2 (13%)
7	SO4	A	413	-	4,4,4	0.14	0	6,6,6	0.05	0
6	GOL	A	409	-	5,5,5	0.37	0	5,5,5	0.27	0
5	NAG	A	406	1	14,14,15	0.37	0	17,19,21	0.39	0
4	MAN	B	401	1	11,11,12	1.05	1 (9%)	15,15,17	1.16	2 (13%)
7	SO4	A	410	-	4,4,4	0.14	0	6,6,6	0.04	0
7	SO4	B	410	-	4,4,4	0.14	0	6,6,6	0.05	0
7	SO4	B	409	-	4,4,4	0.14	0	6,6,6	0.05	0
5	NAG	B	406	1	14,14,15	0.22	0	17,19,21	0.38	0
5	NAG	A	408	1	14,14,15	0.19	0	17,19,21	0.38	0
7	SO4	A	414	-	4,4,4	0.14	0	6,6,6	0.05	0

In the following table, the Chirals column lists the number of chiral outliers, the number of chiral centers analysed, the number of these observed in the model and the number defined in the Chemical Component Dictionary. Similar counts are reported in the Torsion and Rings columns. '-' means no outliers of that kind were identified.

Mol	Type	Chain	Res	Link	Chirals	Torsions	Rings
5	NAG	A	407	1	-	2/6/23/26	0/1/1/1
5	NAG	B	407	1	-	2/6/23/26	0/1/1/1
4	MAN	A	401	1	-	1/2/19/22	0/1/1/1
6	GOL	A	409	-	-	2/4/4/4	-
5	NAG	A	406	1	-	2/6/23/26	0/1/1/1
4	MAN	B	401	1	-	2/2/19/22	0/1/1/1
5	NAG	B	406	1	-	2/6/23/26	0/1/1/1
5	NAG	A	408	1	-	2/6/23/26	0/1/1/1

All (2) bond length outliers are listed below:

Mol	Chain	Res	Type	Atoms	Z	Observed(Å)	Ideal(Å)
4	B	401	MAN	O5-C1	-2.44	1.39	1.43
4	A	401	MAN	O5-C1	-2.21	1.40	1.43

All (4) bond angle outliers are listed below:

Mol	Chain	Res	Type	Atoms	Z	Observed(°)	Ideal(°)
4	A	401	MAN	C1-O5-C5	2.72	115.87	112.19
4	B	401	MAN	C1-O5-C5	2.40	115.45	112.19
4	A	401	MAN	O2-C2-C3	-2.32	105.50	110.14
4	B	401	MAN	O2-C2-C3	-2.21	105.71	110.14

There are no chirality outliers.

5 of 15 torsion outliers are listed below:

Mol	Chain	Res	Type	Atoms
6	A	409	GOL	O1-C1-C2-C3
4	B	401	MAN	O5-C5-C6-O6
5	A	408	NAG	O5-C5-C6-O6
4	B	401	MAN	C4-C5-C6-O6
5	A	406	NAG	O5-C5-C6-O6

There are no ring outliers.

No monomer is involved in short contacts.

## 5.7 Other polymers [i](#)

There are no such residues in this entry.

## 5.8 Polymer linkage issues [i](#)

There are no chain breaks in this entry.

## 6 Fit of model and data [i](#)

### 6.1 Protein, DNA and RNA chains [i](#)

In the following table, the column labelled '#RSRZ > 2' contains the number (and percentage) of RSRZ outliers, followed by percent RSRZ outliers for the chain as percentile scores relative to all X-ray entries and entries of similar resolution. The OWAB column contains the minimum, median, 95<sup>th</sup> percentile and maximum values of the occupancy-weighted average B-factor per residue. The column labelled 'Q < 0.9' lists the number of (and percentage) of residues with an average occupancy less than 0.9.

Mol	Chain	Analysed	<RSRZ>	#RSRZ>2	OWAB(Å <sup>2</sup> )	Q<0.9
1	A	307/317 (96%)	0.60	13 (4%) 36 43	42, 61, 89, 113	0
1	B	311/317 (98%)	0.79	25 (8%) 12 16	50, 74, 101, 126	0
All	All	618/634 (97%)	0.70	38 (6%) 21 27	42, 67, 96, 126	0

The worst 5 of 38 RSRZ outliers are listed below:

Mol	Chain	Res	Type	RSRZ
1	B	77	ARG	6.7
1	A	63	SER	6.5
1	B	300	ASP	5.2
1	B	80	VAL	4.5
1	B	301	GLY	3.7

### 6.2 Non-standard residues in protein, DNA, RNA chains [i](#)

There are no non-standard protein/DNA/RNA residues in this entry.

### 6.3 Carbohydrates [i](#)

In the following table, the Atoms column lists the number of modelled atoms in the group and the number defined in the chemical component dictionary. The B-factors column lists the minimum, median, 95<sup>th</sup> percentile and maximum values of B factors of atoms in the group. The column labelled 'Q < 0.9' lists the number of atoms with occupancy less than 0.9.

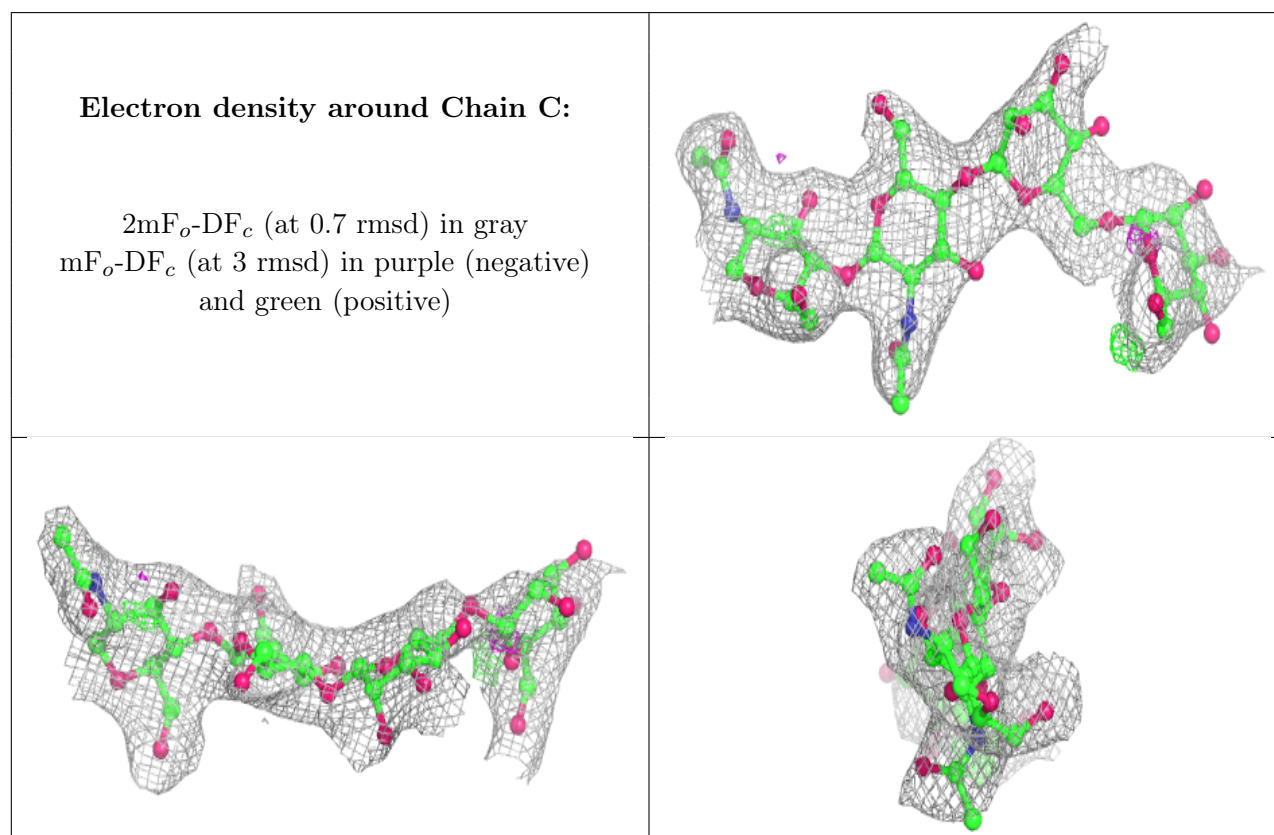
Mol	Type	Chain	Res	Atoms	RSCC	RSR	B-factors(Å <sup>2</sup> )	Q<0.9
2	MAN	C	4	11/12	0.65	0.27	100,105,111,113	0
2	MAN	D	4	11/12	0.69	0.32	132,135,139,141	0
2	BMA	C	3	11/12	0.70	0.22	97,103,106,111	0
2	BMA	D	3	11/12	0.78	0.24	125,133,138,139	0
2	NAG	D	2	14/15	0.81	0.23	104,113,123,134	0

*Continued on next page...*

Continued from previous page...

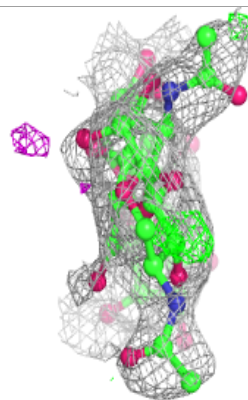
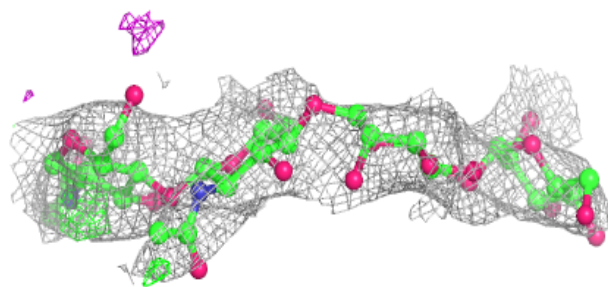
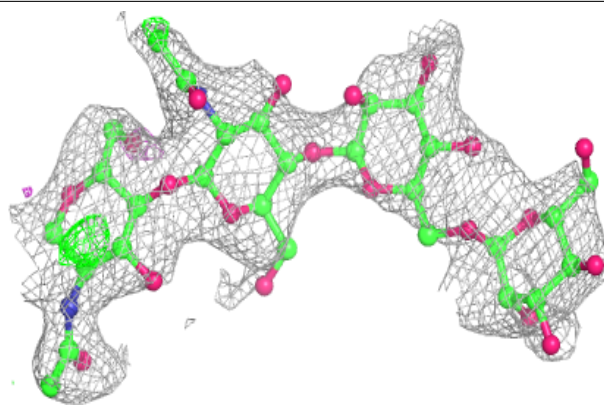
Mol	Type	Chain	Res	Atoms	RSCC	RSR	B-factors( $\text{\AA}^2$ )	Q<0.9
3	GAL	E	2	11/12	0.85	0.25	62,73,77,81	0
2	NAG	D	1	14/15	0.86	0.22	100,102,106,110	0
3	SIA	E	3	20/21	0.87	0.17	54,80,87,88	0
3	NAG	E	1	2/15	0.88	0.13	71,71,71,77	0
2	NAG	C	2	14/15	0.93	0.16	78,84,96,101	0
2	NAG	C	1	14/15	0.93	0.18	65,68,76,82	0

The following is a graphical depiction of the model fit to experimental electron density for oligosaccharide. Each fit is shown from different orientation to approximate a three-dimensional view.

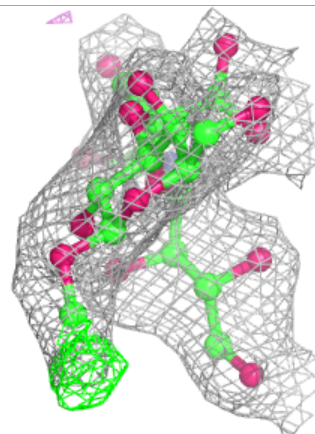
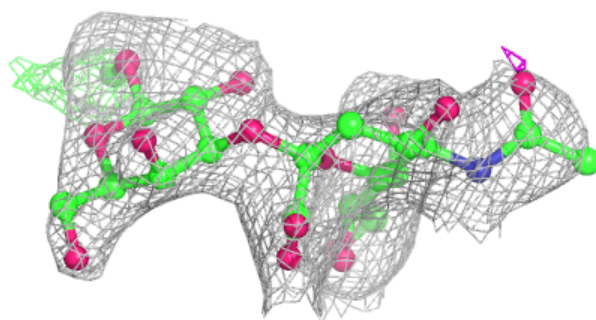
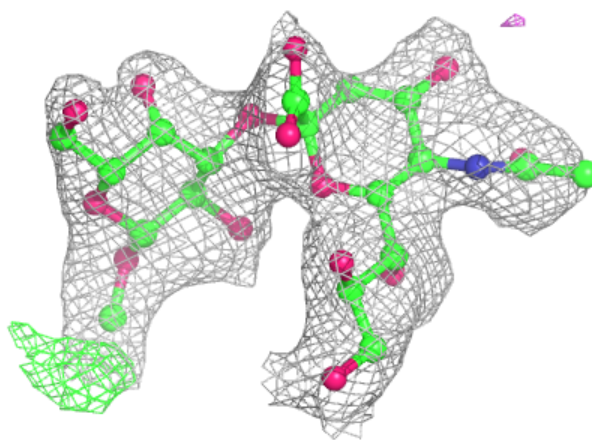


**Electron density around Chain D:**

$2mF_o-DF_c$  (at 0.7 rmsd) in gray  
 $mF_o-DF_c$  (at 3 rmsd) in purple (negative)  
and green (positive)

**Electron density around Chain E:**

$2mF_o-DF_c$  (at 0.7 rmsd) in gray  
 $mF_o-DF_c$  (at 3 rmsd) in purple (negative)  
and green (positive)



## 6.4 Ligands [i](#)

In the following table, the Atoms column lists the number of modelled atoms in the group and the number defined in the chemical component dictionary. The B-factors column lists the minimum, median, 95<sup>th</sup> percentile and maximum values of B factors of atoms in the group. The column labelled 'Q<0.9' lists the number of atoms with occupancy less than 0.9.

Mol	Type	Chain	Res	Atoms	RSCC	RSR	B-factors(Å <sup>2</sup> )	Q<0.9
7	SO4	B	410	5/5	0.67	0.23	147,148,150,150	0
7	SO4	B	411	5/5	0.73	0.34	123,126,128,131	0
7	SO4	A	411	5/5	0.76	0.21	124,125,126,126	0
5	NAG	A	408	14/15	0.79	0.24	81,85,94,99	0
5	NAG	A	406	14/15	0.79	0.26	92,100,123,130	0
7	SO4	B	409	5/5	0.82	0.37	154,155,156,157	0
7	SO4	A	413	5/5	0.83	0.17	132,134,135,136	0
7	SO4	A	410	5/5	0.83	0.16	103,105,108,108	5
5	NAG	B	406	14/15	0.88	0.16	83,87,92,95	0
7	SO4	A	412	5/5	0.88	0.24	110,113,115,116	0
7	SO4	A	414	5/5	0.89	0.15	132,134,135,136	0
5	NAG	B	407	14/15	0.91	0.21	93,99,109,110	0
4	MAN	B	401	11/12	0.91	0.18	102,104,116,125	0
4	MAN	A	401	11/12	0.91	0.17	83,87,91,102	0
7	SO4	B	408	5/5	0.92	0.16	70,71,84,85	5
6	GOL	A	409	6/6	0.92	0.25	76,81,84,87	0
5	NAG	A	407	14/15	0.94	0.15	70,80,91,98	0

## 6.5 Other polymers [i](#)

There are no such residues in this entry.