



# Full wwPDB X-ray Structure Validation Report ⓘ

Oct 11, 2023 – 07:48 AM EDT

PDB ID : 7LGK  
Title : Crystal structure of soluble guanylate cyclase activator runcaciguat (BAY 1101042) bound to nostoc H-NOX domain  
Authors : van den Akker, F.; Kumar, V.; Schaefer, M.  
Deposited on : 2021-01-20  
Resolution : 2.20 Å(reported)

This is a Full wwPDB X-ray Structure Validation Report for a publicly released PDB entry.

We welcome your comments at [validation@mail.wwpdb.org](mailto:validation@mail.wwpdb.org)

A user guide is available at

<https://www.wwpdb.org/validation/2017/XrayValidationReportHelp>

with specific help available everywhere you see the ⓘ symbol.

The types of validation reports are described at

<http://www.wwpdb.org/validation/2017/FAQs#types>.

---

The following versions of software and data (see [references ⓘ](#)) were used in the production of this report:

MolProbity : 4.02b-467  
Mogul : 1.8.5 (274361), CSD as541be (2020)  
Xtriage (Phenix) : 1.13  
EDS : 2.35.1  
buster-report : 1.1.7 (2018)  
Percentile statistics : 20191225.v01 (using entries in the PDB archive December 25th 2019)  
Refmac : 5.8.0158  
CCP4 : 7.0.044 (Gargrove)  
Ideal geometry (proteins) : Engh & Huber (2001)  
Ideal geometry (DNA, RNA) : Parkinson et al. (1996)  
Validation Pipeline (wwPDB-VP) : 2.35.1

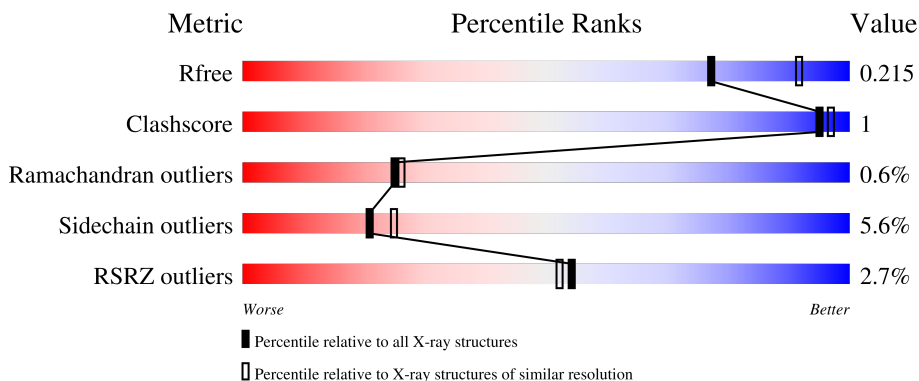
# 1 Overall quality at a glance i

The following experimental techniques were used to determine the structure:

*X-RAY DIFFRACTION*

The reported resolution of this entry is 2.20 Å.

Percentile scores (ranging between 0-100) for global validation metrics of the entry are shown in the following graphic. The table shows the number of entries on which the scores are based.



Metric	Whole archive (#Entries)	Similar resolution (#Entries, resolution range(Å))
$R_{free}$	130704	4898 (2.20-2.20)
Clashscore	141614	5594 (2.20-2.20)
Ramachandran outliers	138981	5503 (2.20-2.20)
Sidechain outliers	138945	5504 (2.20-2.20)
RSRZ outliers	127900	4800 (2.20-2.20)

The table below summarises the geometric issues observed across the polymeric chains and their fit to the electron density. The red, orange, yellow and green segments of the lower bar indicate the fraction of residues that contain outliers for  $\geq 3$ , 2, 1 and 0 types of geometric quality criteria respectively. A grey segment represents the fraction of residues that are not modelled. The numeric value for each fraction is indicated below the corresponding segment, with a dot representing fractions  $\leq 5\%$ . The upper red bar (where present) indicates the fraction of residues that have poor fit to the electron density. The numeric value is given above the bar.

Mol	Chain	Length	Quality of chain
1	A	182	 3% 87% 12% .
1	B	182	 2% 88% 9% ..

## 2 Entry composition [i](#)

There are 5 unique types of molecules in this entry. The entry contains 3084 atoms, of which 0 are hydrogens and 0 are deuteriums.

In the tables below, the ZeroOcc column contains the number of atoms modelled with zero occupancy, the AltConf column contains the number of residues with at least one atom in alternate conformation and the Trace column contains the number of residues modelled with at most 2 atoms.

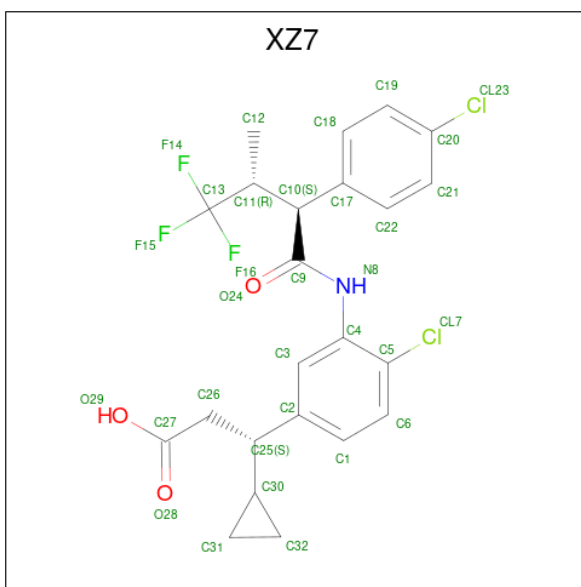
- Molecule 1 is a protein called H-NOX domain protein.

Mol	Chain	Residues	Atoms					ZeroOcc	AltConf	Trace
			Total	C	N	O	S			
1	A	182	Total	C	N	O	S	0	4	0
			1456	928	239	282	7			
1	B	182	Total	C	N	O	S	0	1	0
			1436	915	234	280	7			

There are 2 discrepancies between the modelled and reference sequences:

Chain	Residue	Modelled	Actual	Comment	Reference
A	139	ALA	CYS	conflict	UNP Q8YUQ7
B	139	ALA	CYS	conflict	UNP Q8YUQ7

- Molecule 2 is Runcaciguat (three-letter code: XZ7) (formula:  $C_{23}H_{22}Cl_2F_3NO_3$ ) (labeled as "Ligand of Interest" by depositor).



Mol	Chain	Residues	Atoms						ZeroOcc	AltConf
			Total	C	Cl	F	N	O		
2	A	1	Total	C	Cl	F	N	O	0	0
			32	23	2	3	1	3		

*Continued on next page...*

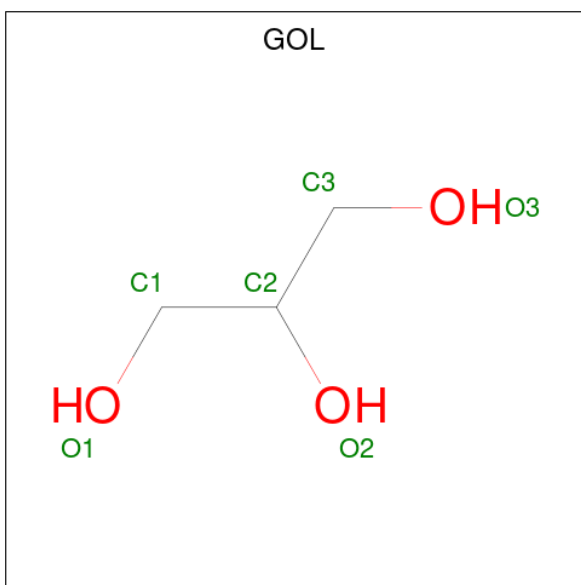
Continued from previous page...

Mol	Chain	Residues	Atoms					ZeroOcc	AltConf	
			Total	C	Cl	F	N			O
2	B	1	32	23	2	3	1	3	0	0

- Molecule 3 is CHLORIDE ION (three-letter code: CL) (formula: Cl).

Mol	Chain	Residues	Atoms	ZeroOcc	AltConf
3	A	1	Total Cl 1 1	0	0
3	B	1	Total Cl 1 1	0	0

- Molecule 4 is GLYCEROL (three-letter code: GOL) (formula: C<sub>3</sub>H<sub>8</sub>O<sub>3</sub>).



Mol	Chain	Residues	Atoms	ZeroOcc	AltConf
4	A	1	Total C O 6 3 3	0	0
4	A	1	Total C O 6 3 3	0	0
4	A	1	Total C O 6 3 3	0	0
4	B	1	Total C O 6 3 3	0	0
4	B	1	Total C O 6 3 3	0	0
4	B	1	Total C O 6 3 3	0	0

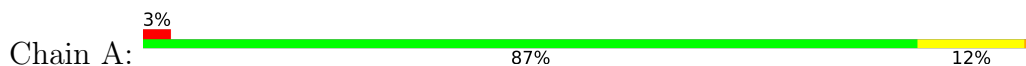
- Molecule 5 is water.

<b>Mol</b>	<b>Chain</b>	<b>Residues</b>	<b>Atoms</b>		<b>ZeroOcc</b>	<b>AltConf</b>
5	A	49	Total 49	O 49	0	0
5	B	41	Total 41	O 41	0	0

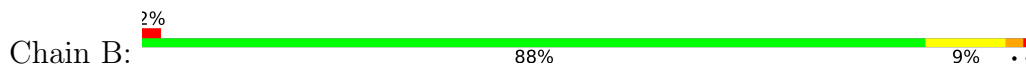
### 3 Residue-property plots [i](#)

These plots are drawn for all protein, RNA, DNA and oligosaccharide chains in the entry. The first graphic for a chain summarises the proportions of the various outlier classes displayed in the second graphic. The second graphic shows the sequence view annotated by issues in geometry and electron density. Residues are color-coded according to the number of geometric quality criteria for which they contain at least one outlier: green = 0, yellow = 1, orange = 2 and red = 3 or more. A red dot above a residue indicates a poor fit to the electron density ( $RSRZ > 2$ ). Stretches of 2 or more consecutive residues without any outlier are shown as a green connector. Residues present in the sample, but not in the model, are shown in grey.

- Molecule 1: H-NOX domain protein



- Molecule 1: H-NOX domain protein



## 4 Data and refinement statistics

Property	Value	Source
Space group	P 21 3	Depositor
Cell constants a, b, c, $\alpha$ , $\beta$ , $\gamma$	123.99Å 123.99Å 123.99Å 90.00° 90.00° 90.00°	Depositor
Resolution (Å)	43.84 – 2.20 43.84 – 2.20	Depositor EDS
% Data completeness (in resolution range)	100.0 (43.84-2.20) 100.0 (43.84-2.20)	Depositor EDS
$R_{merge}$	(Not available)	Depositor
$R_{sym}$	(Not available)	Depositor
$\langle I/\sigma(I) \rangle$ <sup>1</sup>	2.25 (at 2.20Å)	Xtrriage
Refinement program	REFMAC 5.8.0135	Depositor
R, $R_{free}$	0.162 , 0.207 0.171 , 0.215	Depositor DCC
$R_{free}$ test set	1628 reflections (5.00%)	wwPDB-VP
Wilson B-factor (Å <sup>2</sup> )	49.5	Xtrriage
Anisotropy	0.000	Xtrriage
Bulk solvent $k_{sol}$ (e/Å <sup>3</sup> ), $B_{sol}$ (Å <sup>2</sup> )	0.34 , 44.7	EDS
L-test for twinning <sup>2</sup>	$\langle  L  \rangle = 0.47$ , $\langle L^2 \rangle = 0.29$	Xtrriage
Estimated twinning fraction	0.072 for l,-k,h	Xtrriage
$F_o, F_c$ correlation	0.96	EDS
Total number of atoms	3084	wwPDB-VP
Average B, all atoms (Å <sup>2</sup> )	59.0	wwPDB-VP

Xtrriage's analysis on translational NCS is as follows: *The largest off-origin peak in the Patterson function is 3.62% of the height of the origin peak. No significant pseudotranslation is detected.*

<sup>1</sup>Intensities estimated from amplitudes.

<sup>2</sup>Theoretical values of  $\langle |L| \rangle$ ,  $\langle L^2 \rangle$  for acentric reflections are 0.5, 0.333 respectively for untwinned datasets, and 0.375, 0.2 for perfectly twinned datasets.

## 5 Model quality [i](#)

### 5.1 Standard geometry [i](#)

Bond lengths and bond angles in the following residue types are not validated in this section: XZ7, CL, GOL

The Z score for a bond length (or angle) is the number of standard deviations the observed value is removed from the expected value. A bond length (or angle) with  $|Z| > 5$  is considered an outlier worth inspection. RMSZ is the root-mean-square of all Z scores of the bond lengths (or angles).

Mol	Chain	Bond lengths		Bond angles	
		RMSZ	# Z  >5	RMSZ	# Z  >5
1	A	1.36	8/1504 (0.5%)	1.17	6/2034 (0.3%)
1	B	1.38	5/1473 (0.3%)	1.27	9/1992 (0.5%)
All	All	1.37	13/2977 (0.4%)	1.22	15/4026 (0.4%)

All (13) bond length outliers are listed below:

Mol	Chain	Res	Type	Atoms	Z	Observed(Å)	Ideal(Å)
1	B	122	CYS	CB-SG	13.54	2.05	1.82
1	A	85	GLU	CD-OE2	-8.07	1.16	1.25
1	B	172	GLU	CD-OE2	7.54	1.33	1.25
1	A	178	SER	CB-OG	-7.07	1.33	1.42
1	B	122	CYS	CA-CB	6.34	1.67	1.53
1	A	72	GLU	CD-OE2	-6.18	1.18	1.25
1	A	41	GLU	CG-CD	6.06	1.61	1.51
1	B	182	GLU	CD-OE1	5.86	1.32	1.25
1	B	145	VAL	C-O	5.49	1.33	1.23
1	A	57	GLU	CD-OE2	5.48	1.31	1.25
1	A	182	GLU	N-CA	5.31	1.56	1.46
1	A	82	GLY	N-CA	-5.26	1.38	1.46
1	A	41	GLU	CB-CG	5.12	1.61	1.52

All (15) bond angle outliers are listed below:

Mol	Chain	Res	Type	Atoms	Z	Observed(°)	Ideal(°)
1	B	173	ASP	CB-CG-OD2	-9.26	109.96	118.30
1	B	102	ASP	CB-CG-OD2	-8.30	110.83	118.30
1	B	168	ARG	NE-CZ-NH1	7.82	124.21	120.30
1	B	116	ARG	NE-CZ-NH1	7.73	124.17	120.30
1	B	168	ARG	NE-CZ-NH2	-7.32	116.64	120.30
1	A	168	ARG	NE-CZ-NH2	-7.04	116.78	120.30

*Continued on next page...*



Continued from previous page...

Mol	Chain	Res	Type	Atoms	Z	Observed(°)	Ideal(°)
1	B	102	ASP	CB-CG-OD1	6.66	124.30	118.30
1	A	141	LEU	CB-CG-CD2	6.57	122.17	111.00
1	A	168	ARG	NE-CZ-NH1	5.73	123.17	120.30
1	A	102	ASP	CB-CG-OD2	-5.51	113.34	118.30
1	B	114	GLN	CA-CB-CG	-5.36	101.60	113.40
1	B	20	ASP	CB-CG-OD1	5.30	123.07	118.30
1	A	7	LYS	CD-CE-NZ	-5.20	99.75	111.70
1	B	169	GLU	OE1-CD-OE2	5.10	129.42	123.30
1	A	148	LEU	CB-CG-CD2	-5.06	102.40	111.00

There are no chirality outliers.

There are no planarity outliers.

## 5.2 Too-close contacts [i](#)

In the following table, the Non-H and H(model) columns list the number of non-hydrogen atoms and hydrogen atoms in the chain respectively. The H(added) column lists the number of hydrogen atoms added and optimized by MolProbity. The Clashes column lists the number of clashes within the asymmetric unit, whereas Symm-Clashes lists symmetry-related clashes.

Mol	Chain	Non-H	H(model)	H(added)	Clashes	Symm-Clashes
1	A	1456	0	1402	1	0
1	B	1436	0	1380	6	0
2	A	32	0	0	0	0
2	B	32	0	0	0	0
3	A	1	0	0	0	0
3	B	1	0	0	0	0
4	A	18	0	24	0	0
4	B	18	0	24	1	0
5	A	49	0	0	0	0
5	B	41	0	0	0	0
All	All	3084	0	2830	7	0

The all-atom clashscore is defined as the number of clashes found per 1000 atoms (including hydrogen atoms). The all-atom clashscore for this structure is 1.

All (7) close contacts within the same asymmetric unit are listed below, sorted by their clash magnitude.

Atom-1	Atom-2	Interatomic distance (Å)	Clash overlap (Å)
1:B:122:CYS:CB	1:B:122:CYS:SG	2.05	1.44

Continued on next page...

Continued from previous page...

Atom-1	Atom-2	Interatomic distance (Å)	Clash overlap (Å)
1:B:160:VAL:HG12	1:B:162[A]:VAL:HG23	1.72	0.72
1:B:162[A]:VAL:HG22	1:B:179:ILE:HG12	1.85	0.58
1:B:121:GLU:HG2	1:B:133:HIS:HB2	1.91	0.51
1:A:119:ALA:HB3	1:A:135:GLN:HB2	1.93	0.50
1:B:160:VAL:CG1	1:B:162[A]:VAL:HG23	2.42	0.49
1:B:86:LEU:HA	4:B:1005:GOL:H32	2.01	0.42

There are no symmetry-related clashes.

## 5.3 Torsion angles [i](#)

### 5.3.1 Protein backbone [i](#)

In the following table, the Percentiles column shows the percent Ramachandran outliers of the chain as a percentile score with respect to all X-ray entries followed by that with respect to entries of similar resolution.

The Analysed column shows the number of residues for which the backbone conformation was analysed, and the total number of residues.

Mol	Chain	Analysed	Favoured	Allowed	Outliers	Percentiles	
1	A	184/182 (101%)	179 (97%)	3 (2%)	2 (1%)	14	12
1	B	181/182 (100%)	178 (98%)	3 (2%)	0	100	100
All	All	365/364 (100%)	357 (98%)	6 (2%)	2 (0%)	25	31

All (2) Ramachandran outliers are listed below:

Mol	Chain	Res	Type
1	A	34	ILE
1	A	33	ASP

### 5.3.2 Protein sidechains [i](#)

In the following table, the Percentiles column shows the percent sidechain outliers of the chain as a percentile score with respect to all X-ray entries followed by that with respect to entries of similar resolution.

The Analysed column shows the number of residues for which the sidechain conformation was analysed, and the total number of residues.

Mol	Chain	Analysed	Rotameric	Outliers	Percentiles	
1	A	155/151 (103%)	146 (94%)	9 (6%)	20	23
1	B	152/151 (101%)	144 (95%)	8 (5%)	22	27
All	All	307/302 (102%)	290 (94%)	17 (6%)	21	26

All (17) residues with a non-rotameric sidechain are listed below:

Mol	Chain	Res	Type
1	A	28	LYS
1	A	35	ASP
1	A	126	SER
1	A	128	LYS
1	A	129	SER
1	A	148	LEU
1	A	159	LYS
1	A	160	VAL
1	A	182	GLU
1	B	15	LYS
1	B	57	GLU
1	B	116	ARG
1	B	122	CYS
1	B	123	GLN
1	B	124	HIS
1	B	168	ARG
1	B	173	ASP

Sometimes sidechains can be flipped to improve hydrogen bonding and reduce clashes. All (5) such sidechains are listed below:

Mol	Chain	Res	Type
1	A	103	ASN
1	A	114	GLN
1	B	103	ASN
1	B	114	GLN
1	B	135	GLN

### 5.3.3 RNA ⓘ

There are no RNA molecules in this entry.

## 5.4 Non-standard residues in protein, DNA, RNA chains [i](#)

There are no non-standard protein/DNA/RNA residues in this entry.

## 5.5 Carbohydrates [i](#)

There are no monosaccharides in this entry.

## 5.6 Ligand geometry [i](#)

Of 10 ligands modelled in this entry, 2 are monoatomic - leaving 8 for Mogul analysis.

In the following table, the Counts columns list the number of bonds (or angles) for which Mogul statistics could be retrieved, the number of bonds (or angles) that are observed in the model and the number of bonds (or angles) that are defined in the Chemical Component Dictionary. The Link column lists molecule types, if any, to which the group is linked. The Z score for a bond length (or angle) is the number of standard deviations the observed value is removed from the expected value. A bond length (or angle) with  $|Z| > 2$  is considered an outlier worth inspection. RMSZ is the root-mean-square of all Z scores of the bond lengths (or angles).

Mol	Type	Chain	Res	Link	Bond lengths			Bond angles		
					Counts	RMSZ	# Z  > 2	Counts	RMSZ	# Z  > 2
4	GOL	B	1005	-	5,5,5	1.18	0	5,5,5	1.11	1 (20%)
2	XZ7	B	1001	-	34,34,34	1.92	6 (17%)	48,50,50	2.01	14 (29%)
2	XZ7	A	1001	-	34,34,34	1.95	10 (29%)	48,50,50	2.53	13 (27%)
4	GOL	B	1003	-	5,5,5	0.42	0	5,5,5	0.80	0
4	GOL	A	1005	-	5,5,5	0.33	0	5,5,5	0.59	0
4	GOL	A	1004	-	5,5,5	0.24	0	5,5,5	0.49	0
4	GOL	B	1004	-	5,5,5	0.43	0	5,5,5	1.17	0
4	GOL	A	1003	-	5,5,5	0.32	0	5,5,5	1.30	1 (20%)

In the following table, the Chirals column lists the number of chiral outliers, the number of chiral centers analysed, the number of these observed in the model and the number defined in the Chemical Component Dictionary. Similar counts are reported in the Torsion and Rings columns. '-' means no outliers of that kind were identified.

Mol	Type	Chain	Res	Link	Chirals	Torsions	Rings
4	GOL	B	1005	-	-	2/4/4/4	-
2	XZ7	B	1001	-	-	0/34/36/36	0/3/3/3
2	XZ7	A	1001	-	-	4/34/36/36	0/3/3/3
4	GOL	B	1003	-	-	4/4/4/4	-
4	GOL	A	1005	-	-	2/4/4/4	-

*Continued on next page...*

Continued from previous page...

Mol	Type	Chain	Res	Link	Chirals	Torsions	Rings
4	GOL	A	1004	-	-	2/4/4/4	-
4	GOL	B	1004	-	-	4/4/4/4	-
4	GOL	A	1003	-	-	3/4/4/4	-

All (16) bond length outliers are listed below:

Mol	Chain	Res	Type	Atoms	Z	Observed(Å)	Ideal(Å)
2	B	1001	XZ7	C13-C11	5.17	1.58	1.50
2	A	1001	XZ7	C25-C30	4.94	1.61	1.53
2	B	1001	XZ7	C3-C2	4.84	1.46	1.39
2	B	1001	XZ7	C17-C10	-4.54	1.45	1.52
2	A	1001	XZ7	C4-N8	-4.46	1.33	1.41
2	A	1001	XZ7	C17-C10	-3.83	1.46	1.52
2	A	1001	XZ7	C12-C11	-3.13	1.46	1.53
2	A	1001	XZ7	C13-C11	3.01	1.55	1.50
2	B	1001	XZ7	F14-C13	-2.90	1.26	1.33
2	A	1001	XZ7	C9-N8	-2.84	1.29	1.35
2	A	1001	XZ7	C22-C17	-2.65	1.34	1.39
2	B	1001	XZ7	C1-C2	-2.32	1.35	1.39
2	B	1001	XZ7	O29-C27	-2.29	1.23	1.30
2	A	1001	XZ7	O29-C27	-2.28	1.23	1.30
2	A	1001	XZ7	C2-C25	2.27	1.55	1.51
2	A	1001	XZ7	C22-C21	-2.17	1.34	1.38

All (29) bond angle outliers are listed below:

Mol	Chain	Res	Type	Atoms	Z	Observed(°)	Ideal(°)
2	A	1001	XZ7	C2-C25-C30	-10.72	98.13	112.49
2	B	1001	XZ7	F14-C13-C11	-7.33	102.99	113.17
2	A	1001	XZ7	C26-C25-C2	5.71	121.92	111.88
2	A	1001	XZ7	C25-C26-C27	5.42	124.56	114.18
2	A	1001	XZ7	C4-C5-CL7	4.62	124.80	119.54
2	A	1001	XZ7	F14-C13-F16	3.96	115.71	106.87
2	B	1001	XZ7	C18-C17-C10	-3.85	114.66	120.85
2	B	1001	XZ7	O29-C27-O28	3.47	131.94	123.30
2	B	1001	XZ7	C4-N8-C9	-3.37	117.68	126.92
2	B	1001	XZ7	C2-C25-C30	-3.31	108.06	112.49
2	A	1001	XZ7	F16-C13-C11	-3.12	108.84	113.17
2	A	1001	XZ7	C19-C18-C17	-3.06	118.12	121.20
2	B	1001	XZ7	C21-C22-C17	-3.00	118.17	121.20
2	B	1001	XZ7	C26-C25-C2	2.89	116.96	111.88

Continued on next page...

Continued from previous page...

Mol	Chain	Res	Type	Atoms	Z	Observed(°)	Ideal(°)
2	A	1001	XZ7	C17-C10-C9	-2.88	102.97	108.44
2	B	1001	XZ7	O28-C27-C26	-2.81	113.80	122.80
2	B	1001	XZ7	C18-C17-C22	2.77	121.75	118.29
4	A	1003	GOL	O1-C1-C2	-2.67	97.41	110.20
2	A	1001	XZ7	C18-C17-C22	2.50	121.41	118.29
2	A	1001	XZ7	C22-C21-C20	-2.37	116.74	119.24
2	B	1001	XZ7	C17-C10-C9	-2.35	103.96	108.44
2	A	1001	XZ7	C18-C17-C10	-2.34	117.08	120.85
2	B	1001	XZ7	C3-C4-C5	-2.31	115.78	118.17
2	B	1001	XZ7	C4-C5-CL7	2.28	122.13	119.54
4	B	1005	GOL	O3-C3-C2	2.21	120.79	110.20
2	B	1001	XZ7	F15-C13-F14	2.11	111.59	106.87
2	A	1001	XZ7	O28-C27-C26	-2.07	116.17	122.80
2	B	1001	XZ7	C11-C10-C9	2.03	114.32	111.41
2	A	1001	XZ7	O24-C9-C10	-2.02	119.15	121.89

There are no chirality outliers.

All (21) torsion outliers are listed below:

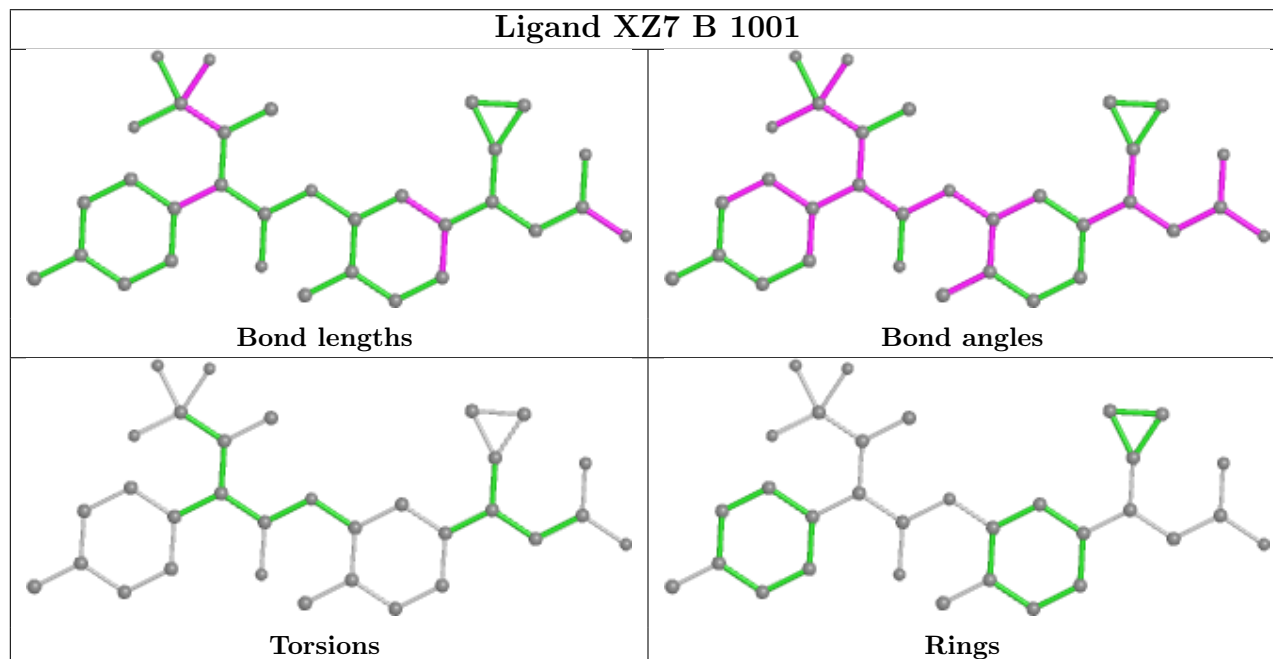
Mol	Chain	Res	Type	Atoms
2	A	1001	XZ7	C30-C25-C26-C27
2	A	1001	XZ7	C2-C25-C26-C27
4	A	1003	GOL	O1-C1-C2-C3
4	A	1004	GOL	O1-C1-C2-C3
4	B	1003	GOL	O1-C1-C2-C3
4	B	1005	GOL	O1-C1-C2-C3
4	A	1003	GOL	C1-C2-C3-O3
4	A	1005	GOL	C1-C2-C3-O3
4	B	1003	GOL	C1-C2-C3-O3
4	B	1004	GOL	O1-C1-C2-C3
4	B	1004	GOL	C1-C2-C3-O3
4	A	1004	GOL	O1-C1-C2-O2
4	B	1005	GOL	O1-C1-C2-O2
4	A	1003	GOL	O1-C1-C2-O2
4	B	1003	GOL	O1-C1-C2-O2
4	A	1005	GOL	O2-C2-C3-O3
4	B	1004	GOL	O1-C1-C2-O2
2	A	1001	XZ7	C25-C26-C27-O29
4	B	1003	GOL	O2-C2-C3-O3
4	B	1004	GOL	O2-C2-C3-O3
2	A	1001	XZ7	C25-C26-C27-O28

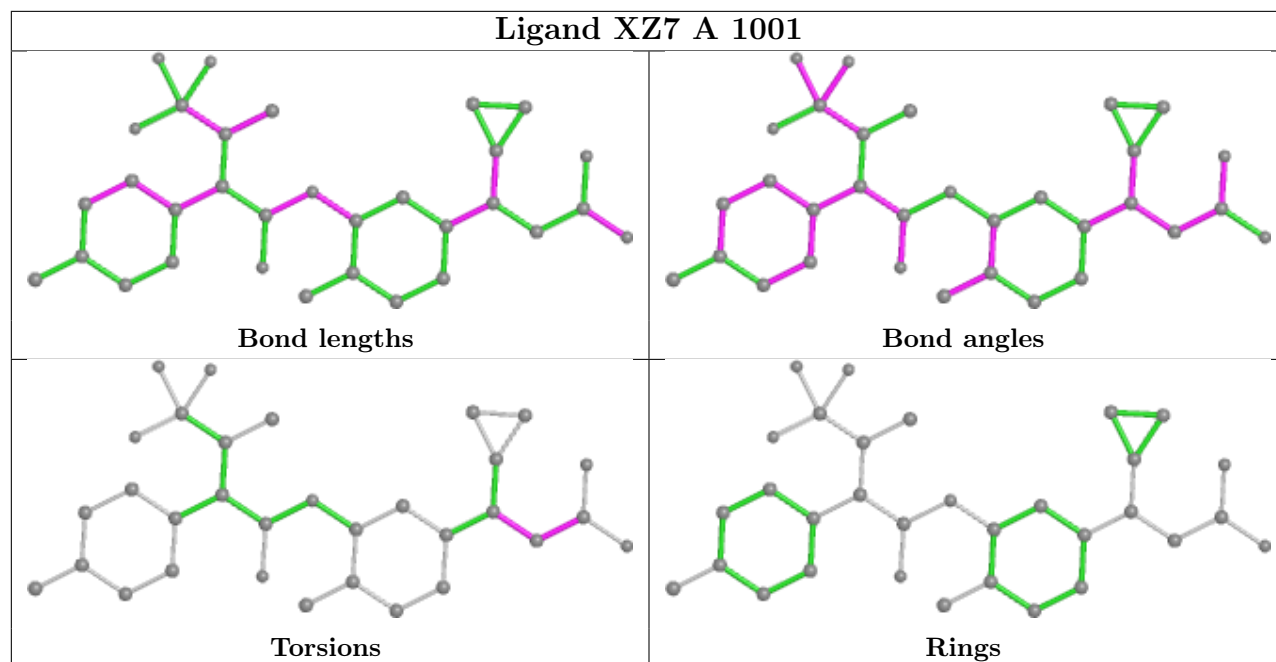
There are no ring outliers.

1 monomer is involved in 1 short contact:

Mol	Chain	Res	Type	Clashes	Symm-Clashes
4	B	1005	GOL	1	0

The following is a two-dimensional graphical depiction of Mogul quality analysis of bond lengths, bond angles, torsion angles, and ring geometry for all instances of the Ligand of Interest. In addition, ligands with molecular weight > 250 and outliers as shown on the validation Tables will also be included. For torsion angles, if less than 5% of the Mogul distribution of torsion angles is within 10 degrees of the torsion angle in question, then that torsion angle is considered an outlier. Any bond that is central to one or more torsion angles identified as an outlier by Mogul will be highlighted in the graph. For rings, the root-mean-square deviation (RMSD) between the ring in question and similar rings identified by Mogul is calculated over all ring torsion angles. If the average RMSD is greater than 60 degrees and the minimal RMSD between the ring in question and any Mogul-identified rings is also greater than 60 degrees, then that ring is considered an outlier. The outliers are highlighted in purple. The color gray indicates Mogul did not find sufficient equivalents in the CSD to analyse the geometry.





## 5.7 Other polymers [i](#)

There are no such residues in this entry.

## 5.8 Polymer linkage issues [i](#)

There are no chain breaks in this entry.



## 6 Fit of model and data [i](#)

### 6.1 Protein, DNA and RNA chains [i](#)

In the following table, the column labelled ‘#RSRZ > 2’ contains the number (and percentage) of RSRZ outliers, followed by percent RSRZ outliers for the chain as percentile scores relative to all X-ray entries and entries of similar resolution. The OWAB column contains the minimum, median, 95<sup>th</sup> percentile and maximum values of the occupancy-weighted average B-factor per residue. The column labelled ‘Q < 0.9’ lists the number of (and percentage) of residues with an average occupancy less than 0.9.

Mol	Chain	Analysed	<RSRZ>	#RSRZ>2	OWAB(Å <sup>2</sup> )	Q<0.9
1	A	182/182 (100%)	-0.12	6 (3%) 46 44	42, 51, 90, 109	0
1	B	182/182 (100%)	-0.16	4 (2%) 62 59	40, 54, 91, 108	0
All	All	364/364 (100%)	-0.14	10 (2%) 54 52	40, 53, 92, 109	0

All (10) RSRZ outliers are listed below:

Mol	Chain	Res	Type	RSRZ
1	A	128	LYS	4.6
1	A	127	SER	3.4
1	A	125	THR	3.0
1	A	33	ASP	2.8
1	B	33	ASP	2.7
1	B	18	GLY	2.4
1	B	20	ASP	2.3
1	B	127	SER	2.2
1	A	16	HIS	2.1
1	A	32	GLU	2.0

### 6.2 Non-standard residues in protein, DNA, RNA chains [i](#)

There are no non-standard protein/DNA/RNA residues in this entry.

### 6.3 Carbohydrates [i](#)

There are no monosaccharides in this entry.

## 6.4 Ligands

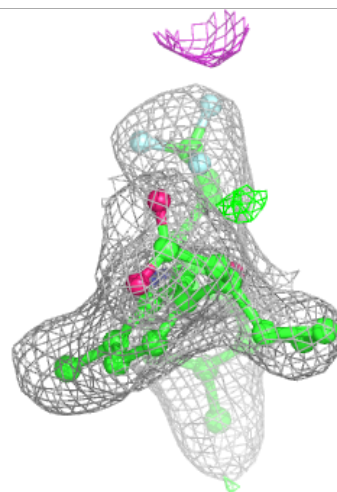
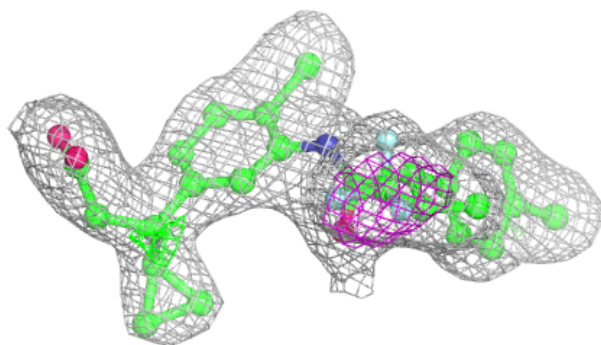
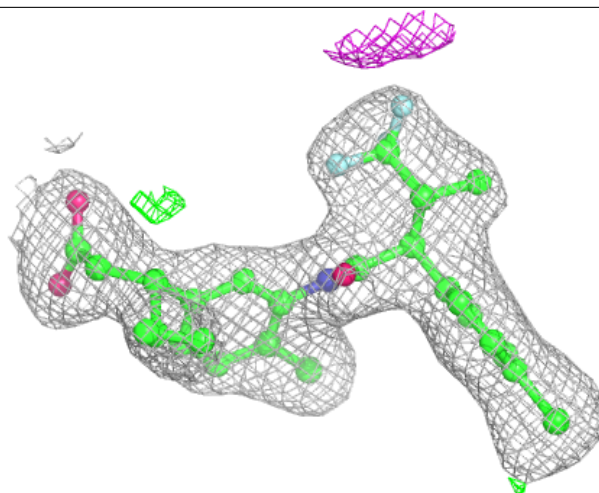
In the following table, the Atoms column lists the number of modelled atoms in the group and the number defined in the chemical component dictionary. The B-factors column lists the minimum, median, 95<sup>th</sup> percentile and maximum values of B factors of atoms in the group. The column labelled 'Q< 0.9' lists the number of atoms with occupancy less than 0.9.

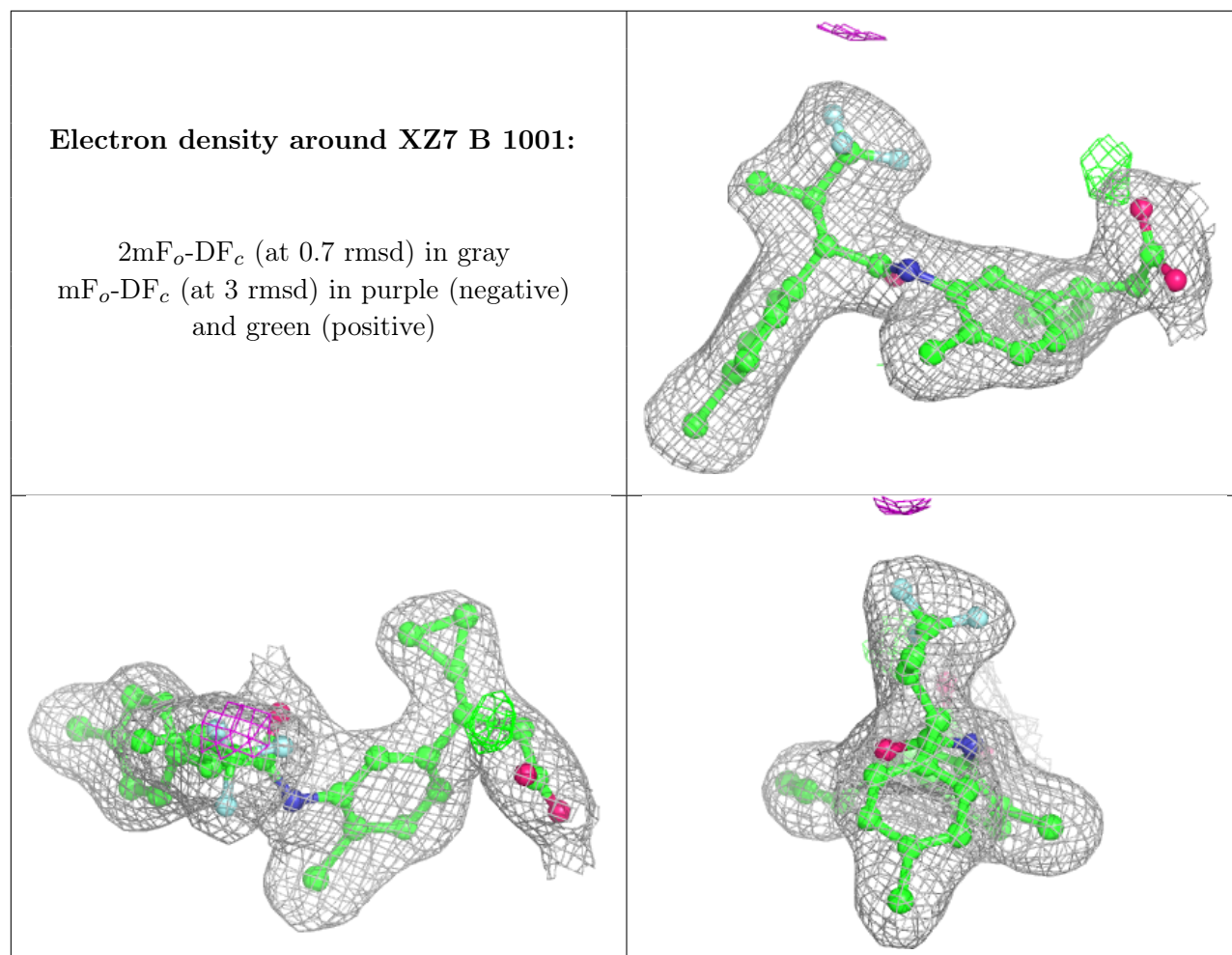
Mol	Type	Chain	Res	Atoms	RSCC	RSR	B-factors(Å <sup>2</sup> )	Q<0.9
4	GOL	B	1005	6/6	0.87	0.25	57,69,81,85	0
4	GOL	A	1005	6/6	0.94	0.16	81,82,87,101	0
4	GOL	A	1003	6/6	0.95	0.22	73,77,85,118	0
4	GOL	B	1003	6/6	0.96	0.15	58,76,78,104	0
4	GOL	B	1004	6/6	0.96	0.16	60,70,74,93	0
2	XZ7	A	1001	32/32	0.96	0.11	44,54,70,70	0
2	XZ7	B	1001	32/32	0.97	0.11	42,50,56,62	0
4	GOL	A	1004	6/6	0.97	0.14	59,75,81,94	0
3	CL	A	1002	1/1	0.98	0.13	49,49,49,49	0
3	CL	B	1002	1/1	1.00	0.14	52,52,52,52	0

The following is a graphical depiction of the model fit to experimental electron density of all instances of the Ligand of Interest. In addition, ligands with molecular weight > 250 and outliers as shown on the geometry validation Tables will also be included. Each fit is shown from different orientation to approximate a three-dimensional view.

**Electron density around XZ7 A 1001:**

$2mF_o-DF_c$  (at 0.7 rmsd) in gray  
 $mF_o-DF_c$  (at 3 rmsd) in purple (negative)  
and green (positive)





## 6.5 Other polymers [i](#)

There are no such residues in this entry.