



Full wwPDB X-ray Structure Validation Report ⓘ

Apr 28, 2024 – 12:30 am BST

PDB ID : 5LIL
Title : Structure of *Aggregatibacter actinomycetemcomitans* MacB bound to ATPyS (P21)
Authors : Crow, A.
Deposited on : 2016-07-15
Resolution : 3.35 Å (reported)

This is a Full wwPDB X-ray Structure Validation Report for a publicly released PDB entry.

We welcome your comments at validation@mail.wwpdb.org

A user guide is available at

<https://www.wwpdb.org/validation/2017/XrayValidationReportHelp>

with specific help available everywhere you see the ⓘ symbol.

The types of validation reports are described at

<http://www.wwpdb.org/validation/2017/FAQs#types>.

The following versions of software and data (see [references ⓘ](#)) were used in the production of this report:

MolProbity : 4.02b-467
Mogul : 1.8.4, CSD as541be (2020)
Xtriage (Phenix) : 1.13
EDS : 2.36.2
buster-report : 1.1.7 (2018)
Percentile statistics : 20191225.v01 (using entries in the PDB archive December 25th 2019)
Refmac : 5.8.0158
CCP4 : 7.0.044 (Gargrove)
Ideal geometry (proteins) : Engh & Huber (2001)
Ideal geometry (DNA, RNA) : Parkinson et al. (1996)
Validation Pipeline (wwPDB-VP) : 2.36.2

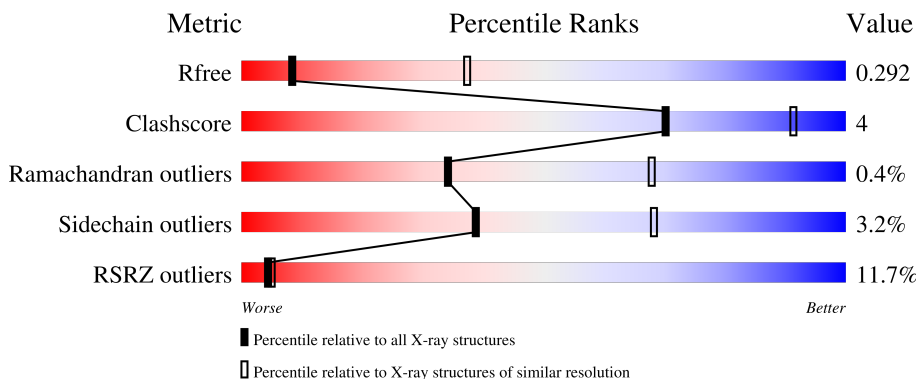
1 Overall quality at a glance

The following experimental techniques were used to determine the structure:

X-RAY DIFFRACTION

The reported resolution of this entry is 3.35 Å.

Percentile scores (ranging between 0-100) for global validation metrics of the entry are shown in the following graphic. The table shows the number of entries on which the scores are based.



Metric	Whole archive (#Entries)	Similar resolution (#Entries, resolution range(Å))
R_{free}	130704	1558 (3.42-3.30)
Clashscore	141614	1627 (3.42-3.30)
Ramachandran outliers	138981	1599 (3.42-3.30)
Sidechain outliers	138945	1598 (3.42-3.30)
RSRZ outliers	127900	1507 (3.42-3.30)

The table below summarises the geometric issues observed across the polymeric chains and their fit to the electron density. The red, orange, yellow and green segments of the lower bar indicate the fraction of residues that contain outliers for ≥ 3 , 2, 1 and 0 types of geometric quality criteria respectively. A grey segment represents the fraction of residues that are not modelled. The numeric value for each fraction is indicated below the corresponding segment, with a dot representing fractions $\leq 5\%$. The upper red bar (where present) indicates the fraction of residues that have poor fit to the electron density. The numeric value is given above the bar.

Mol	Chain	Length	Quality of chain
1	A	664	
1	B	664	

2 Entry composition i

There are 4 unique types of molecules in this entry. The entry contains 18962 atoms, of which 9639 are hydrogens and 0 are deuteriums.

In the tables below, the ZeroOcc column contains the number of atoms modelled with zero occupancy, the AltConf column contains the number of residues with at least one atom in alternate conformation and the Trace column contains the number of residues modelled with at most 2 atoms.

- Molecule 1 is a protein called Macrolide export ATP-binding/permease protein MacB.

Mol	Chain	Residues	Atoms						ZeroOcc	AltConf	Trace
			Total	C	H	N	O	S			
1	A	615	9529	2954	4853	802	899	21	0	0	0
1	B	604	9341	2888	4762	787	883	21	0	0	0

There are 42 discrepancies between the modelled and reference sequences:

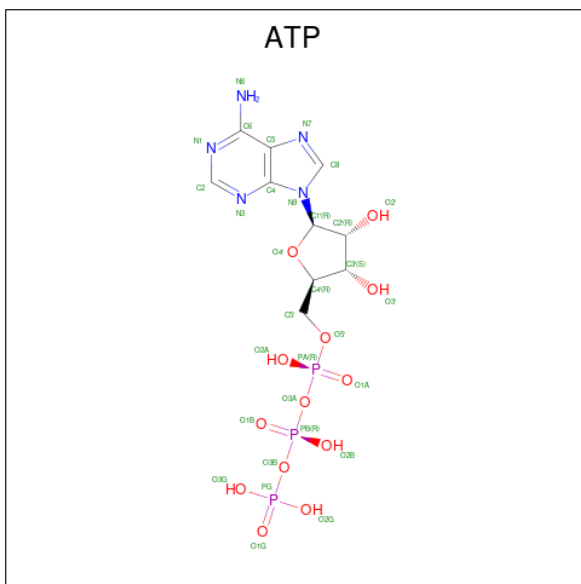
Chain	Residue	Modelled	Actual	Comment	Reference
A	-19	MET	-	initiating methionine	UNP Q2EHL8
A	-18	GLY	-	expression tag	UNP Q2EHL8
A	-17	SER	-	expression tag	UNP Q2EHL8
A	-16	SER	-	expression tag	UNP Q2EHL8
A	-15	HIS	-	expression tag	UNP Q2EHL8
A	-14	HIS	-	expression tag	UNP Q2EHL8
A	-13	HIS	-	expression tag	UNP Q2EHL8
A	-12	HIS	-	expression tag	UNP Q2EHL8
A	-11	HIS	-	expression tag	UNP Q2EHL8
A	-10	HIS	-	expression tag	UNP Q2EHL8
A	-9	SER	-	expression tag	UNP Q2EHL8
A	-8	SER	-	expression tag	UNP Q2EHL8
A	-7	GLY	-	expression tag	UNP Q2EHL8
A	-6	LEU	-	expression tag	UNP Q2EHL8
A	-5	VAL	-	expression tag	UNP Q2EHL8
A	-4	PRO	-	expression tag	UNP Q2EHL8
A	-3	ARG	-	expression tag	UNP Q2EHL8
A	-2	GLY	-	expression tag	UNP Q2EHL8
A	-1	SER	-	expression tag	UNP Q2EHL8
A	0	HIS	-	expression tag	UNP Q2EHL8
A	169	GLN	GLU	engineered mutation	UNP Q2EHL8
B	-19	MET	-	initiating methionine	UNP Q2EHL8
B	-18	GLY	-	expression tag	UNP Q2EHL8
B	-17	SER	-	expression tag	UNP Q2EHL8
B	-16	SER	-	expression tag	UNP Q2EHL8

Continued on next page...

Continued from previous page...

Chain	Residue	Modelled	Actual	Comment	Reference
B	-15	HIS	-	expression tag	UNP Q2EHL8
B	-14	HIS	-	expression tag	UNP Q2EHL8
B	-13	HIS	-	expression tag	UNP Q2EHL8
B	-12	HIS	-	expression tag	UNP Q2EHL8
B	-11	HIS	-	expression tag	UNP Q2EHL8
B	-10	HIS	-	expression tag	UNP Q2EHL8
B	-9	SER	-	expression tag	UNP Q2EHL8
B	-8	SER	-	expression tag	UNP Q2EHL8
B	-7	GLY	-	expression tag	UNP Q2EHL8
B	-6	LEU	-	expression tag	UNP Q2EHL8
B	-5	VAL	-	expression tag	UNP Q2EHL8
B	-4	PRO	-	expression tag	UNP Q2EHL8
B	-3	ARG	-	expression tag	UNP Q2EHL8
B	-2	GLY	-	expression tag	UNP Q2EHL8
B	-1	SER	-	expression tag	UNP Q2EHL8
B	0	HIS	-	expression tag	UNP Q2EHL8
B	169	GLN	GLU	engineered mutation	UNP Q2EHL8

- Molecule 2 is ADENOSINE-5'-TRIPHOSPHATE (three-letter code: ATP) (formula: $C_{10}H_{16}N_5O_{13}P_3$).



Mol	Chain	Residues	Atoms					ZeroOcc	AltConf	
			Total	C	H	N	O			P
2	A	1	Total	C	H	N	O	P	0	0
			43	10	12	5	13	3		
2	B	1	Total	C	H	N	O	P	0	0
			43	10	12	5	13	3		

- Molecule 3 is MAGNESIUM ION (three-letter code: MG) (formula: Mg).

Mol	Chain	Residues	Atoms		ZeroOcc	AltConf
3	A	1	Total 1	Mg 1	0	0
3	B	1	Total 1	Mg 1	0	0

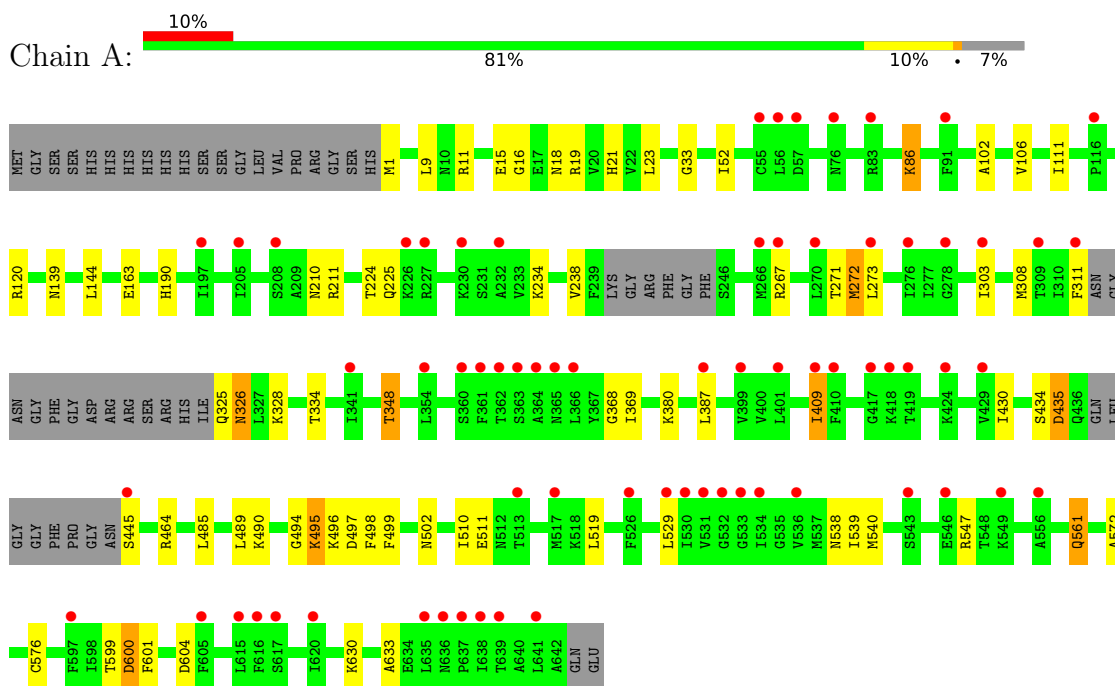
- Molecule 4 is water.

Mol	Chain	Residues	Atoms		ZeroOcc	AltConf
4	A	2	Total 2	O 2	0	0
4	B	2	Total 2	O 2	0	0

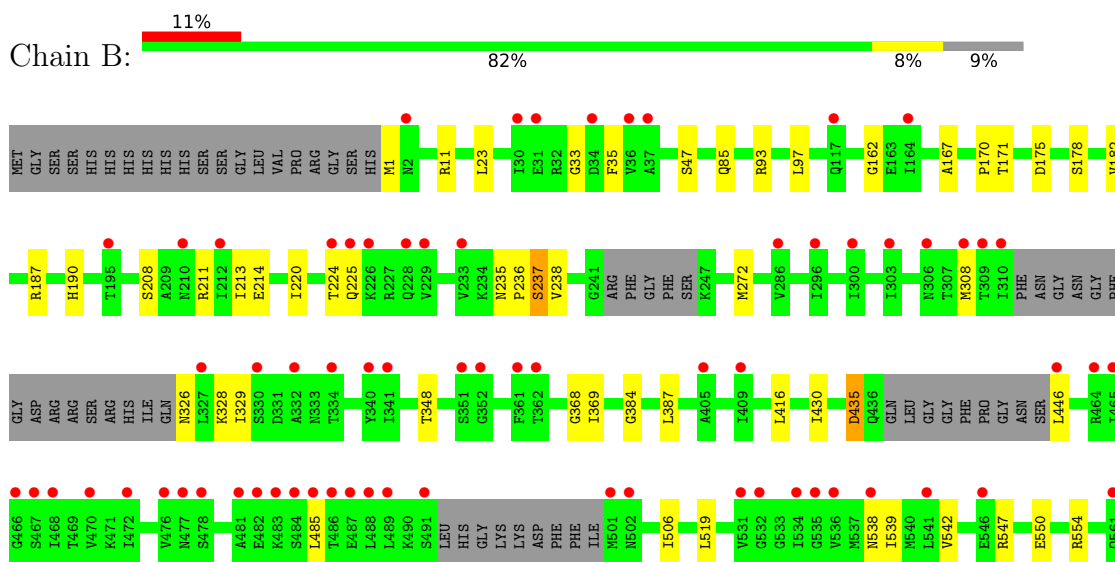
3 Residue-property plots

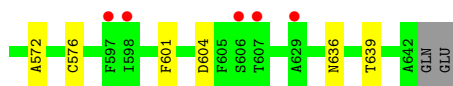
These plots are drawn for all protein, RNA, DNA and oligosaccharide chains in the entry. The first graphic for a chain summarises the proportions of the various outlier classes displayed in the second graphic. The second graphic shows the sequence view annotated by issues in geometry and electron density. Residues are color-coded according to the number of geometric quality criteria for which they contain at least one outlier: green = 0, yellow = 1, orange = 2 and red = 3 or more. A red dot above a residue indicates a poor fit to the electron density ($RSRZ > 2$). Stretches of 2 or more consecutive residues without any outlier are shown as a green connector. Residues present in the sample, but not in the model, are shown in grey.

- Molecule 1: Macrolide export ATP-binding/permease protein MacB



- Molecule 1: Macrolide export ATP-binding/permease protein MacB





4 Data and refinement statistics

Property	Value	Source
Space group	P 1 21 1	Depositor
Cell constants a, b, c, α , β , γ	111.59Å 82.62Å 124.92Å 90.00° 94.45° 90.00°	Depositor
Resolution (Å)	79.95 – 3.35 79.94 – 3.35	Depositor EDS
% Data completeness (in resolution range)	98.7 (79.95-3.35) 99.1 (79.94-3.35)	Depositor EDS
R_{merge}	(Not available)	Depositor
R_{sym}	0.28	Depositor
$\langle I/\sigma(I) \rangle$ ¹	2.07 (at 3.33Å)	Xtrriage
Refinement program	PHENIX (dev_2196: ???)	Depositor
R, R_{free}	0.244 , 0.290 0.245 , 0.292	Depositor DCC
R_{free} test set	1592 reflections (4.87%)	wwPDB-VP
Wilson B-factor (Å ²)	71.7	Xtrriage
Anisotropy	0.155	Xtrriage
Bulk solvent k_{sol} (e/Å ³), B_{sol} (Å ²)	0.33 , 46.6	EDS
L-test for twinning ²	$\langle L \rangle = 0.48$, $\langle L^2 \rangle = 0.31$	Xtrriage
Estimated twinning fraction	No twinning to report.	Xtrriage
F_o, F_c correlation	0.84	EDS
Total number of atoms	18962	wwPDB-VP
Average B, all atoms (Å ²)	100.0	wwPDB-VP

Xtrriage's analysis on translational NCS is as follows: *The largest off-origin peak in the Patterson function is 4.57% of the height of the origin peak. No significant pseudotranslation is detected.*

¹Intensities estimated from amplitudes.

²Theoretical values of $\langle |L| \rangle$, $\langle L^2 \rangle$ for acentric reflections are 0.5, 0.333 respectively for untwinned datasets, and 0.375, 0.2 for perfectly twinned datasets.

5 Model quality [i](#)

5.1 Standard geometry [i](#)

Bond lengths and bond angles in the following residue types are not validated in this section: MG, ATP

The Z score for a bond length (or angle) is the number of standard deviations the observed value is removed from the expected value. A bond length (or angle) with $|Z| > 5$ is considered an outlier worth inspection. RMSZ is the root-mean-square of all Z scores of the bond lengths (or angles).

Mol	Chain	Bond lengths		Bond angles	
		RMSZ	# Z >5	RMSZ	# Z >5
1	A	0.26	0/4725	0.47	0/6366
1	B	0.26	0/4623	0.46	0/6228
All	All	0.26	0/9348	0.47	0/12594

Chiral center outliers are detected by calculating the chiral volume of a chiral center and verifying if the center is modelled as a planar moiety or with the opposite hand. A planarity outlier is detected by checking planarity of atoms in a peptide group, atoms in a mainchain group or atoms of a sidechain that are expected to be planar.

Mol	Chain	#Chirality outliers	#Planarity outliers
1	B	0	1

There are no bond length outliers.

There are no bond angle outliers.

There are no chirality outliers.

All (1) planarity outliers are listed below:

Mol	Chain	Res	Type	Group
1	B	93	ARG	Peptide

5.2 Too-close contacts [i](#)

In the following table, the Non-H and H(model) columns list the number of non-hydrogen atoms and hydrogen atoms in the chain respectively. The H(added) column lists the number of hydrogen atoms added and optimized by MolProbity. The Clashes column lists the number of clashes within the asymmetric unit, whereas Symm-Clashes lists symmetry-related clashes.

Mol	Chain	Non-H	H(model)	H(added)	Clashes	Symm-Clashes
1	A	4676	4853	4856	41	0
1	B	4579	4762	4764	32	0
2	A	31	12	12	1	0
2	B	31	12	12	1	0
3	A	1	0	0	0	0
3	B	1	0	0	0	0
4	A	2	0	0	1	0
4	B	2	0	0	0	0
All	All	9323	9639	9644	68	0

The all-atom clashscore is defined as the number of clashes found per 1000 atoms (including hydrogen atoms). The all-atom clashscore for this structure is 4.

All (68) close contacts within the same asymmetric unit are listed below, sorted by their clash magnitude.

Atom-1	Atom-2	Interatomic distance (Å)	Clash overlap (Å)
1:A:496:LYS:HB3	1:A:497:ASP:HA	1.76	0.67
1:A:489:LEU:HB3	1:A:498:PHE:CZ	2.38	0.59
1:A:325:GLN:HG3	1:A:464:ARG:HD3	1.85	0.58
1:B:435:ASP:N	1:B:435:ASP:OD1	2.35	0.58
1:A:600:ASP:OD1	1:A:601:PHE:N	2.38	0.56
1:A:599:THR:O	1:A:600:ASP:HB2	2.06	0.55
1:B:85:GLN:CB	1:B:238:VAL:HG11	2.36	0.55
1:A:519:LEU:HD23	1:B:601:PHE:CE1	2.42	0.54
1:B:47:SER:OG	2:B:701:ATP:O1B	2.25	0.54
1:B:187:ARG:NH1	1:B:208:SER:OG	2.42	0.53
2:A:701:ATP:O2B	4:A:801:HOH:O	2.19	0.52
1:A:539:ILE:HD13	1:B:538:ASN:HB3	1.91	0.52
1:B:97:LEU:HD22	1:B:550:GLU:HG3	1.91	0.51
1:B:211:ARG:HA	1:B:224:THR:O	2.11	0.51
1:A:380:LYS:O	1:A:434:SER:OG	2.29	0.51
1:A:15:GLU:O	1:A:18:ASN:N	2.43	0.50
1:A:434:SER:O	1:A:435:ASP:CB	2.59	0.50
1:B:550:GLU:O	1:B:554:ARG:HG3	2.12	0.49
1:A:308:MET:SD	1:A:502:ASN:ND2	2.85	0.49
1:A:434:SER:O	1:A:435:ASP:HB2	2.13	0.49
1:A:326:ASN:OD1	1:A:326:ASN:N	2.44	0.48
1:A:9:LEU:HD11	1:A:52:ILE:HG21	1.95	0.48
1:B:236:PRO:O	1:B:237:SER:CB	2.62	0.47
1:B:369:ILE:HD11	1:B:387:LEU:HD12	1.96	0.47
1:A:496:LYS:CB	1:A:497:ASP:HA	2.43	0.47
1:A:601:PHE:CE1	1:B:519:LEU:HD23	2.50	0.47

Continued on next page...

Continued from previous page...

Atom-1	Atom-2	Interatomic distance (Å)	Clash overlap (Å)
1:B:348:THR:O	1:B:368:GLY:N	2.42	0.46
1:B:235:ASN:HB3	1:B:236:PRO:HD2	1.97	0.46
1:B:167:ALA:HB1	1:B:170:PRO:HG3	1.98	0.46
1:B:213:ILE:HG21	1:B:220:ILE:HD11	1.98	0.46
1:B:85:GLN:HB2	1:B:238:VAL:HG11	1.96	0.45
1:A:111:ILE:CD1	1:A:120:ARG:CZ	2.94	0.45
1:A:369:ILE:HD11	1:A:387:LEU:HD12	1.99	0.45
1:B:175:ASP:OD1	1:B:178:SER:N	2.42	0.45
1:B:11:ARG:HB3	1:B:23:LEU:HB2	1.99	0.45
1:A:387:LEU:HD23	1:A:430:ILE:HD11	1.99	0.44
1:A:539:ILE:HD11	1:B:542:VAL:HG21	1.98	0.44
1:B:85:GLN:HG3	1:B:238:VAL:HG11	1.98	0.44
1:A:272:MET:HG3	1:A:273:LEU:N	2.33	0.44
1:A:572:ALA:O	1:A:576:CYS:N	2.47	0.44
1:A:303:ILE:HD11	1:B:506:ILE:HD12	2.00	0.43
1:A:490:LYS:HD3	1:A:495:LYS:HG2	2.01	0.43
1:A:11:ARG:HB3	1:A:23:LEU:HB2	2.01	0.43
1:B:171:THR:HG22	1:B:171:THR:O	2.17	0.43
1:B:636:ASN:O	1:B:639:THR:OG1	2.33	0.43
1:A:211:ARG:HA	1:A:224:THR:O	2.19	0.43
1:B:85:GLN:O	1:B:162:GLY:HA2	2.19	0.43
1:A:16:GLY:N	1:A:19:ARG:HB2	2.34	0.42
1:A:139:ASN:HB2	1:A:144:LEU:HD21	2.01	0.42
1:B:572:ALA:O	1:B:576:CYS:N	2.49	0.42
1:A:238:VAL:HG13	1:A:238:VAL:O	2.20	0.42
1:B:387:LEU:HD23	1:B:430:ILE:HD11	2.02	0.42
1:A:33:GLY:O	1:A:190:HIS:NE2	2.53	0.41
1:A:380:LYS:N	1:A:434:SER:OG	2.48	0.41
1:A:485:LEU:HD21	1:A:489:LEU:HD12	2.03	0.41
1:A:271:THR:HG22	1:A:539:ILE:HG23	2.02	0.41
1:A:409:ILE:N	1:A:409:ILE:CD1	2.84	0.41
1:A:499:PHE:O	1:A:499:PHE:CG	2.74	0.41
1:B:178:SER:O	1:B:182:VAL:HG23	2.20	0.41
1:A:102:ALA:O	1:A:106:VAL:HG23	2.21	0.41
1:A:348:THR:O	1:A:368:GLY:N	2.53	0.41
1:A:510:ILE:HG13	1:A:511:GLU:N	2.36	0.41
1:A:538:ASN:HB3	1:B:539:ILE:HD13	2.01	0.41
1:B:33:GLY:O	1:B:190:HIS:NE2	2.54	0.41
1:B:328:LYS:HG3	1:B:329:ILE:H	1.87	0.40
1:A:86:LYS:NZ	1:A:163:GLU:OE2	2.47	0.40
1:A:561:GLN:NE2	1:A:633:ALA:O	2.55	0.40

Continued on next page...

Continued from previous page...

Atom-1	Atom-2	Interatomic distance (Å)	Clash overlap (Å)
1:B:384:GLY:HA3	1:B:416:LEU:HD21	2.03	0.40

There are no symmetry-related clashes.

5.3 Torsion angles [i](#)

5.3.1 Protein backbone [i](#)

In the following table, the Percentiles column shows the percent Ramachandran outliers of the chain as a percentile score with respect to all X-ray entries followed by that with respect to entries of similar resolution.

The Analysed column shows the number of residues for which the backbone conformation was analysed, and the total number of residues.

Mol	Chain	Analysed	Favoured	Allowed	Outliers	Percentiles	
1	A	607/664 (91%)	562 (93%)	41 (7%)	4 (1%)	22	56
1	B	594/664 (90%)	565 (95%)	28 (5%)	1 (0%)	47	78
All	All	1201/1328 (90%)	1127 (94%)	69 (6%)	5 (0%)	34	68

All (5) Ramachandran outliers are listed below:

Mol	Chain	Res	Type
1	A	435	ASP
1	A	494	GLY
1	A	600	ASP
1	B	237	SER
1	A	348	THR

5.3.2 Protein sidechains [i](#)

In the following table, the Percentiles column shows the percent sidechain outliers of the chain as a percentile score with respect to all X-ray entries followed by that with respect to entries of similar resolution.

The Analysed column shows the number of residues for which the sidechain conformation was analysed, and the total number of residues.

Continued on next page...

Continued from previous page...

Mol	Chain	Analysed	Rotameric	Outliers	Percentiles	
1	A	525/563 (93%)	504 (96%)	21 (4%)	31	62
1	B	514/563 (91%)	502 (98%)	12 (2%)	50	75
All	All	1039/1126 (92%)	1006 (97%)	33 (3%)	39	68

All (33) residues with a non-rotameric sidechain are listed below:

Mol	Chain	Res	Type
1	A	1	MET
1	A	21	HIS
1	A	86	LYS
1	A	210	ASN
1	A	225	GLN
1	A	234	LYS
1	A	267	ARG
1	A	272	MET
1	A	311	PHE
1	A	326	ASN
1	A	328	LYS
1	A	334	THR
1	A	409	ILE
1	A	445	SER
1	A	495	LYS
1	A	529	LEU
1	A	540	MET
1	A	547	ARG
1	A	561	GLN
1	A	604	ASP
1	A	630	LYS
1	B	1	MET
1	B	35	PHE
1	B	214	GLU
1	B	225	GLN
1	B	272	MET
1	B	308	MET
1	B	326	ASN
1	B	435	ASP
1	B	446	LEU
1	B	485	LEU
1	B	547	ARG
1	B	604	ASP

Sometimes sidechains can be flipped to improve hydrogen bonding and reduce clashes. All (2) such sidechains are listed below:

Mol	Chain	Res	Type
1	B	10	ASN
1	B	21	HIS

5.3.3 RNA [i](#)

There are no RNA molecules in this entry.

5.4 Non-standard residues in protein, DNA, RNA chains [i](#)

There are no non-standard protein/DNA/RNA residues in this entry.

5.5 Carbohydrates [i](#)

There are no monosaccharides in this entry.

5.6 Ligand geometry [i](#)

Of 4 ligands modelled in this entry, 2 are monoatomic - leaving 2 for Mogul analysis.

In the following table, the Counts columns list the number of bonds (or angles) for which Mogul statistics could be retrieved, the number of bonds (or angles) that are observed in the model and the number of bonds (or angles) that are defined in the Chemical Component Dictionary. The Link column lists molecule types, if any, to which the group is linked. The Z score for a bond length (or angle) is the number of standard deviations the observed value is removed from the expected value. A bond length (or angle) with $|Z| > 2$ is considered an outlier worth inspection. RMSZ is the root-mean-square of all Z scores of the bond lengths (or angles).

Mol	Type	Chain	Res	Link	Bond lengths			Bond angles		
					Counts	RMSZ	# $ Z > 2$	Counts	RMSZ	# $ Z > 2$
2	ATP	A	701	3	26,33,33	0.92	1 (3%)	31,52,52	1.37	2 (6%)
2	ATP	B	701	3	26,33,33	0.93	1 (3%)	31,52,52	1.40	4 (12%)

In the following table, the Chirals column lists the number of chiral outliers, the number of chiral centers analysed, the number of these observed in the model and the number defined in the Chemical Component Dictionary. Similar counts are reported in the Torsion and Rings columns. '-' means no outliers of that kind were identified.

Mol	Type	Chain	Res	Link	Chirals	Torsions	Rings
2	ATP	A	701	3	-	5/18/38/38	0/3/3/3
2	ATP	B	701	3	-	8/18/38/38	0/3/3/3

All (2) bond length outliers are listed below:

Mol	Chain	Res	Type	Atoms	Z	Observed(Å)	Ideal(Å)
2	B	701	ATP	C5-C4	2.34	1.47	1.40
2	A	701	ATP	C5-C4	2.32	1.47	1.40

All (6) bond angle outliers are listed below:

Mol	Chain	Res	Type	Atoms	Z	Observed(°)	Ideal(°)
2	A	701	ATP	N3-C2-N1	-3.79	122.75	128.68
2	B	701	ATP	N3-C2-N1	-3.61	123.03	128.68
2	B	701	ATP	PA-O3A-PB	-2.96	122.67	132.83
2	A	701	ATP	C4-C5-N7	-2.54	106.75	109.40
2	B	701	ATP	PB-O3B-PG	-2.43	124.50	132.83
2	B	701	ATP	C4-C5-N7	-2.38	106.91	109.40

There are no chirality outliers.

All (13) torsion outliers are listed below:

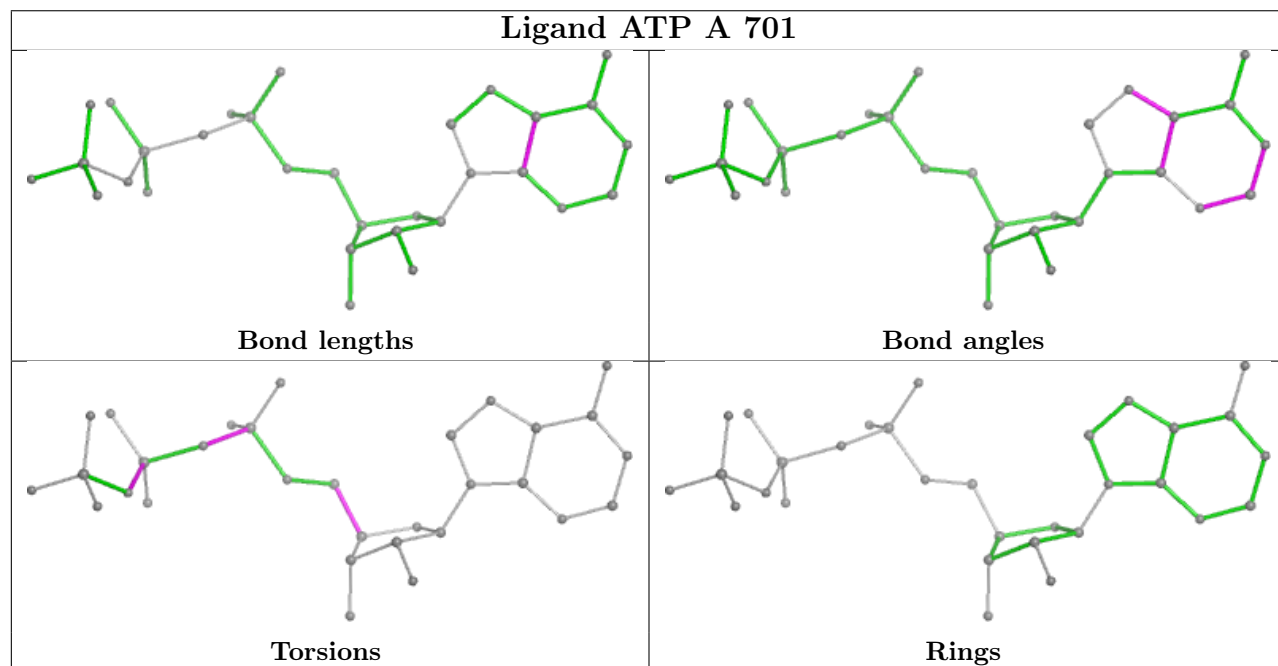
Mol	Chain	Res	Type	Atoms
2	B	701	ATP	PB-O3B-PG-O3G
2	B	701	ATP	C5'-O5'-PA-O2A
2	A	701	ATP	O4'-C4'-C5'-O5'
2	B	701	ATP	O4'-C4'-C5'-O5'
2	B	701	ATP	C3'-C4'-C5'-O5'
2	B	701	ATP	C5'-O5'-PA-O3A
2	A	701	ATP	C3'-C4'-C5'-O5'
2	A	701	ATP	PG-O3B-PB-O2B
2	B	701	ATP	PG-O3B-PB-O1B
2	B	701	ATP	C5'-O5'-PA-O1A
2	A	701	ATP	PG-O3B-PB-O1B
2	A	701	ATP	PB-O3A-PA-O1A
2	B	701	ATP	PG-O3B-PB-O2B

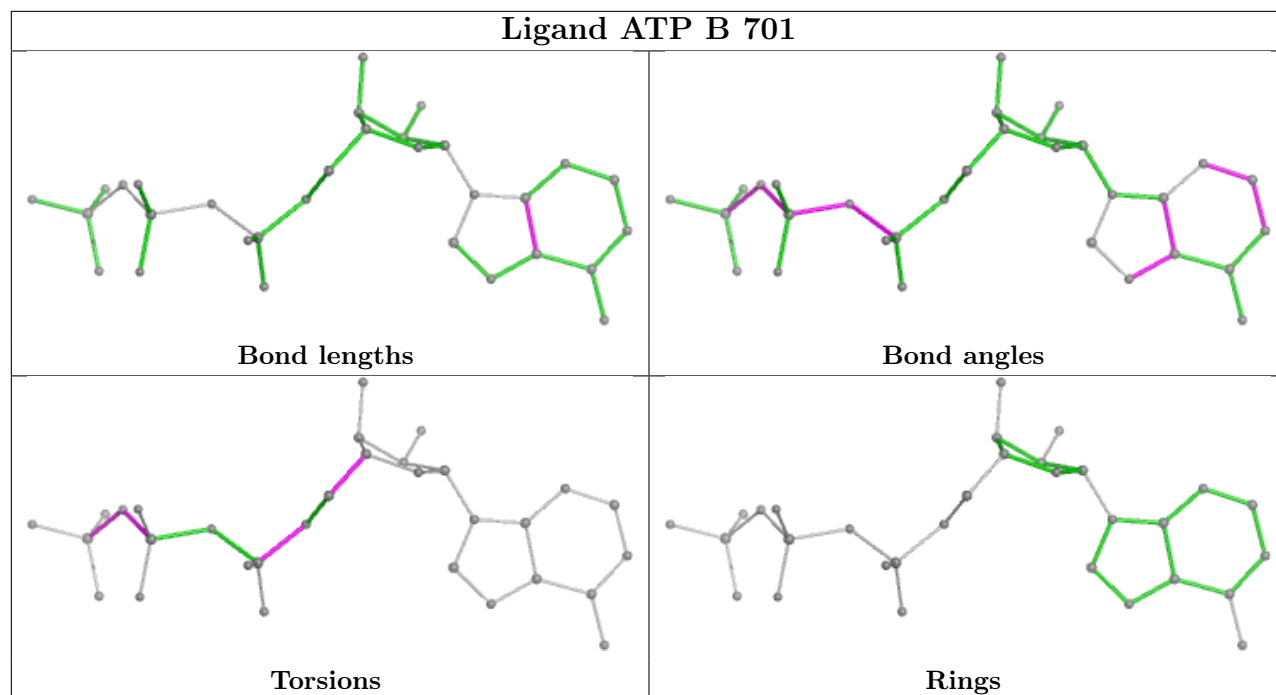
There are no ring outliers.

2 monomers are involved in 2 short contacts:

Mol	Chain	Res	Type	Clashes	Symm-Clashes
2	A	701	ATP	1	0
2	B	701	ATP	1	0

The following is a two-dimensional graphical depiction of Mogul quality analysis of bond lengths, bond angles, torsion angles, and ring geometry for all instances of the Ligand of Interest. In addition, ligands with molecular weight > 250 and outliers as shown on the validation Tables will also be included. For torsion angles, if less than 5% of the Mogul distribution of torsion angles is within 10 degrees of the torsion angle in question, then that torsion angle is considered an outlier. Any bond that is central to one or more torsion angles identified as an outlier by Mogul will be highlighted in the graph. For rings, the root-mean-square deviation (RMSD) between the ring in question and similar rings identified by Mogul is calculated over all ring torsion angles. If the average RMSD is greater than 60 degrees and the minimal RMSD between the ring in question and any Mogul-identified rings is also greater than 60 degrees, then that ring is considered an outlier. The outliers are highlighted in purple. The color gray indicates Mogul did not find sufficient equivalents in the CSD to analyse the geometry.





5.7 Other polymers [i](#)

There are no such residues in this entry.

5.8 Polymer linkage issues [i](#)

There are no chain breaks in this entry.

6 Fit of model and data

6.1 Protein, DNA and RNA chains

In the following table, the column labelled ‘#RSRZ > 2’ contains the number (and percentage) of RSRZ outliers, followed by percent RSRZ outliers for the chain as percentile scores relative to all X-ray entries and entries of similar resolution. The OWAB column contains the minimum, median, 95th percentile and maximum values of the occupancy-weighted average B-factor per residue. The column labelled ‘Q < 0.9’ lists the number of (and percentage) of residues with an average occupancy less than 0.9.

Mol	Chain	Analysed	<RSRZ>	#RSRZ>2	OWAB(Å ²)	Q<0.9
1	A	615/664 (92%)	0.69	69 (11%) 5 6	48, 84, 159, 192	0
1	B	604/664 (90%)	0.68	74 (12%) 4 4	49, 82, 133, 161	0
All	All	1219/1328 (91%)	0.69	143 (11%) 4 5	48, 83, 149, 192	0

All (143) RSRZ outliers are listed below:

Mol	Chain	Res	Type	RSRZ
1	B	488	LEU	8.2
1	B	485	LEU	6.3
1	B	472	ILE	5.7
1	B	501	MET	5.6
1	A	226	LYS	5.4
1	A	360	SER	5.2
1	B	309	THR	5.1
1	B	502	ASN	4.8
1	B	489	LEU	4.7
1	B	308	MET	4.7
1	B	483	LYS	4.7
1	B	481	ALA	4.6
1	B	491	SER	4.4
1	A	418	LYS	4.4
1	B	482	GLU	4.4
1	A	230	LYS	4.3
1	A	445	SER	4.3
1	B	225	GLN	4.3
1	B	487	GLU	4.3
1	B	310	ILE	4.2
1	A	208	SER	4.1
1	A	387	LEU	4.1
1	A	55	CYS	3.9
1	A	365	ASN	3.8

Continued on next page...

Continued from previous page...

Mol	Chain	Res	Type	RSRZ
1	B	233	VAL	3.8
1	B	306	ASN	3.8
1	B	340	TYR	3.8
1	B	486	THR	3.8
1	A	531	VAL	3.7
1	B	341	ILE	3.7
1	B	541	LEU	3.7
1	B	334	THR	3.7
1	A	637	PRO	3.7
1	A	409	ILE	3.6
1	B	531	VAL	3.6
1	A	56	LEU	3.5
1	B	534	ILE	3.4
1	A	232	ALA	3.3
1	A	616	PHE	3.3
1	B	226	LYS	3.3
1	B	300	ILE	3.3
1	A	341	ILE	3.3
1	B	468	ILE	3.2
1	B	598	ILE	3.2
1	B	409	ILE	3.1
1	B	361	PHE	3.1
1	A	227	ARG	3.1
1	B	484	SER	3.0
1	B	228	GLN	2.9
1	B	597	PHE	2.9
1	A	617	SER	2.9
1	B	607	THR	2.9
1	A	417	GLY	2.9
1	A	429	VAL	2.9
1	B	229	VAL	2.9
1	A	639	THR	2.9
1	A	615	LEU	2.9
1	A	354	LEU	2.8
1	B	37	ALA	2.8
1	B	352	GLY	2.8
1	B	470	VAL	2.8
1	A	399	VAL	2.8
1	B	210	ASN	2.8
1	A	419	THR	2.8
1	A	362	THR	2.7
1	A	517	MET	2.7

Continued on next page...

Continued from previous page...

Mol	Chain	Res	Type	RSRZ
1	A	529	LEU	2.7
1	B	224	THR	2.7
1	A	266	MET	2.7
1	A	635	LEU	2.7
1	A	361	PHE	2.7
1	B	467	SER	2.7
1	B	31	GLU	2.7
1	B	629	ALA	2.6
1	A	424	LYS	2.6
1	A	116	PRO	2.6
1	A	549	LYS	2.6
1	A	83	ARG	2.6
1	A	363	SER	2.6
1	A	410	PHE	2.6
1	A	309	THR	2.6
1	A	364	ALA	2.6
1	A	605	PHE	2.6
1	B	464	ARG	2.6
1	B	296	ILE	2.5
1	A	532	GLY	2.5
1	A	57	ASP	2.5
1	B	465	ILE	2.5
1	B	303	ILE	2.5
1	A	556	ALA	2.5
1	B	405	ALA	2.5
1	B	532	GLY	2.5
1	A	530	ILE	2.5
1	A	546	GLU	2.5
1	A	197	ILE	2.4
1	A	638	ILE	2.4
1	B	195	THR	2.4
1	A	303	ILE	2.4
1	B	546	GLU	2.4
1	B	476	VAL	2.4
1	B	536	VAL	2.4
1	B	286	VAL	2.4
1	A	526	PHE	2.4
1	B	466	GLY	2.4
1	B	117	GLN	2.4
1	B	164	ILE	2.4
1	B	36	VAL	2.3
1	A	534	ILE	2.3

Continued on next page...

Continued from previous page...

Mol	Chain	Res	Type	RSRZ
1	B	446	LEU	2.3
1	B	30	ILE	2.3
1	B	327	LEU	2.3
1	A	267	ARG	2.3
1	A	597	PHE	2.3
1	A	533	GLY	2.3
1	B	538	ASN	2.3
1	B	351	SER	2.3
1	A	273	LEU	2.3
1	B	212	ILE	2.3
1	A	536	VAL	2.3
1	A	513	THR	2.2
1	B	2	ASN	2.2
1	A	366	LEU	2.2
1	B	606	SER	2.2
1	A	76	ASN	2.2
1	B	561	GLN	2.2
1	B	34	ASP	2.2
1	B	477	ASN	2.2
1	A	270	LEU	2.2
1	A	620	ILE	2.2
1	A	311	PHE	2.2
1	B	478	SER	2.1
1	A	401	LEU	2.1
1	B	332	ALA	2.1
1	A	641	LEU	2.1
1	B	362	THR	2.1
1	A	278	GLY	2.1
1	B	330	SER	2.1
1	A	91	PHE	2.1
1	A	205	ILE	2.1
1	A	636	ASN	2.0
1	B	535	GLY	2.0
1	A	543	SER	2.0
1	A	276	ILE	2.0

6.2 Non-standard residues in protein, DNA, RNA chains

There are no non-standard protein/DNA/RNA residues in this entry.

6.3 Carbohydrates [i](#)

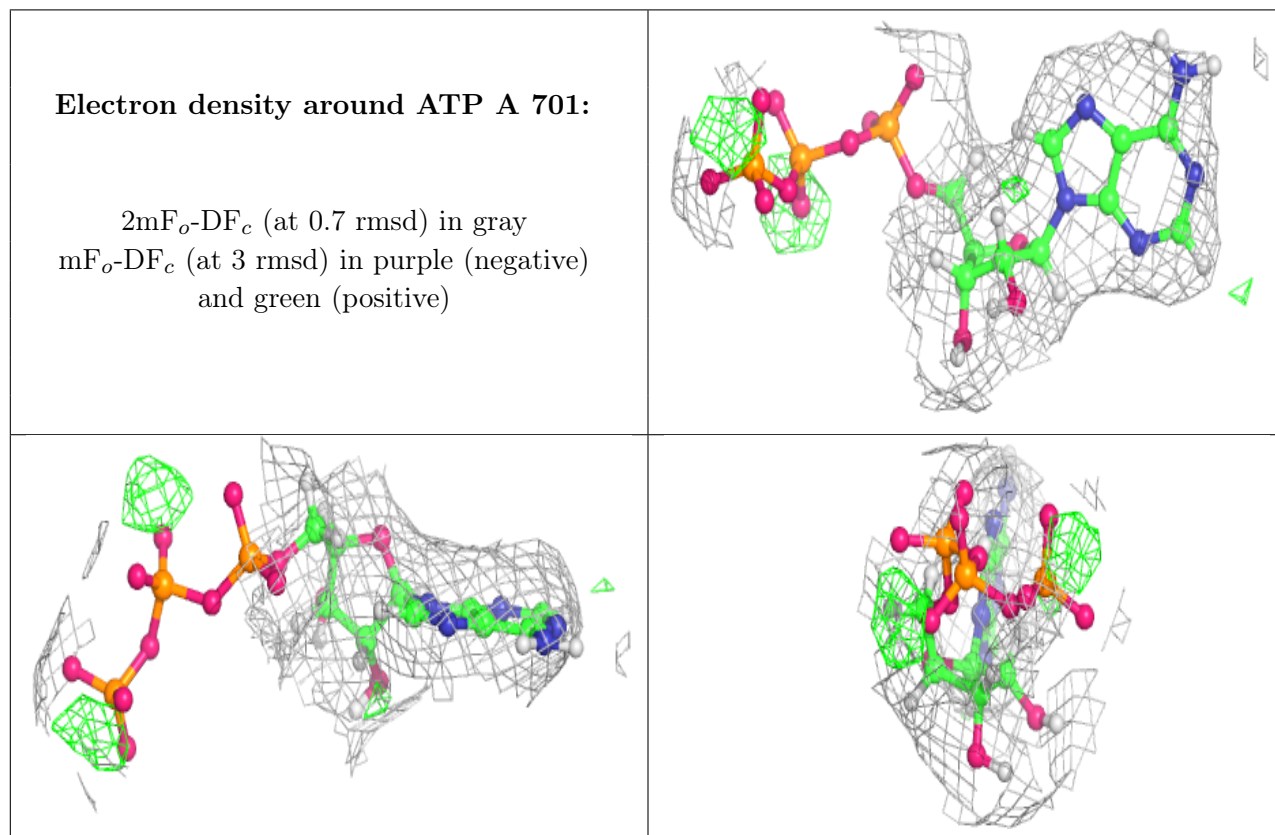
There are no monosaccharides in this entry.

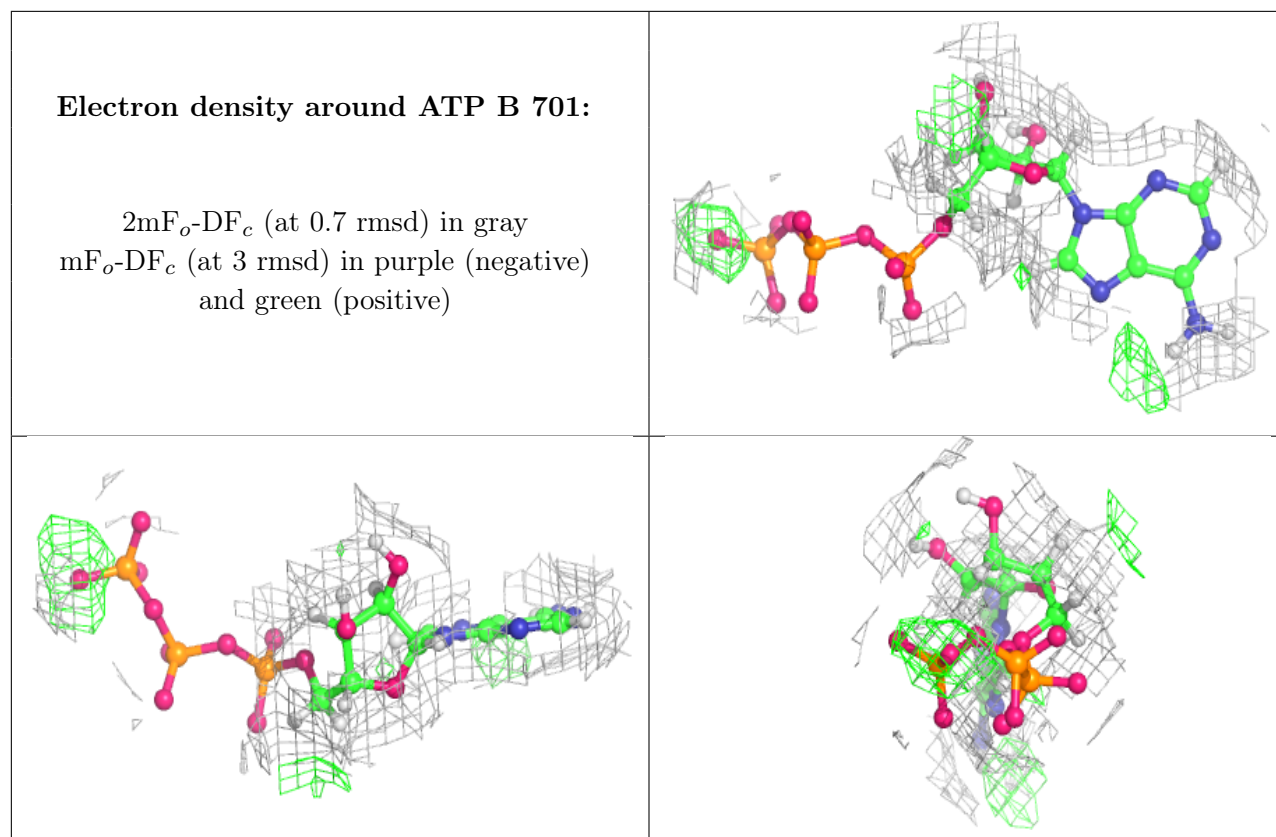
6.4 Ligands [i](#)

In the following table, the Atoms column lists the number of modelled atoms in the group and the number defined in the chemical component dictionary. The B-factors column lists the minimum, median, 95th percentile and maximum values of B factors of atoms in the group. The column labelled 'Q< 0.9' lists the number of atoms with occupancy less than 0.9.

Mol	Type	Chain	Res	Atoms	RSCC	RSR	B-factors(Å ²)	Q<0.9
2	ATP	A	701	31/31	0.97	0.27	48,70,88,92	0
2	ATP	B	701	31/31	0.98	0.25	51,69,88,106	0
3	MG	A	702	1/1	0.99	0.24	54,54,54,54	0
3	MG	B	702	1/1	0.99	0.26	60,60,60,60	0

The following is a graphical depiction of the model fit to experimental electron density of all instances of the Ligand of Interest. In addition, ligands with molecular weight > 250 and outliers as shown on the geometry validation Tables will also be included. Each fit is shown from different orientation to approximate a three-dimensional view.





6.5 Other polymers [i](#)

There are no such residues in this entry.