



# Full wwPDB X-ray Structure Validation Report ⓘ

Nov 7, 2023 – 03:09 PM JST

PDB ID : 6LKO  
Title : Turning an asparaginyl endopeptidase into a peptide ligase  
Authors : El Sahili, A.; Lescar, J.  
Deposited on : 2019-12-19  
Resolution : 2.00 Å(reported)

This is a Full wwPDB X-ray Structure Validation Report for a publicly released PDB entry.

We welcome your comments at [validation@mail.wwpdb.org](mailto:validation@mail.wwpdb.org)

A user guide is available at

<https://www.wwpdb.org/validation/2017/XrayValidationReportHelp>

with specific help available everywhere you see the ⓘ symbol.

The types of validation reports are described at

<http://www.wwpdb.org/validation/2017/FAQs#types>.

---

The following versions of software and data (see [references ⓘ](#)) were used in the production of this report:

MolProbity : 4.02b-467  
Mogul : 1.8.5 (274361), CSD as541be (2020)  
Xtrriage (Phenix) : 1.13  
EDS : 2.36  
Percentile statistics : 20191225.v01 (using entries in the PDB archive December 25th 2019)  
Refmac : 5.8.0158  
CCP4 : 7.0.044 (Gargrove)  
Ideal geometry (proteins) : Engh & Huber (2001)  
Ideal geometry (DNA, RNA) : Parkinson et al. (1996)  
Validation Pipeline (wwPDB-VP) : 2.36

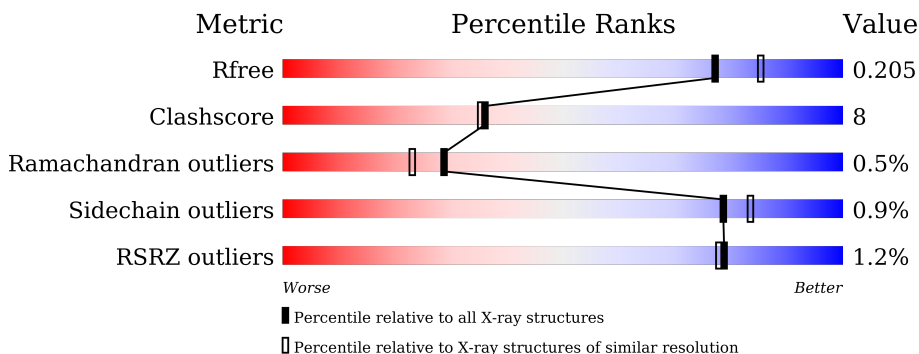
# 1 Overall quality at a glance

The following experimental techniques were used to determine the structure:

*X-RAY DIFFRACTION*

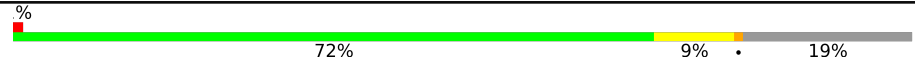
The reported resolution of this entry is 2.00 Å.

Percentile scores (ranging between 0-100) for global validation metrics of the entry are shown in the following graphic. The table shows the number of entries on which the scores are based.



Metric	Whole archive (#Entries)	Similar resolution (#Entries, resolution range(Å))
$R_{free}$	130704	8085 (2.00-2.00)
Clashscore	141614	9178 (2.00-2.00)
Ramachandran outliers	138981	9054 (2.00-2.00)
Sidechain outliers	138945	9053 (2.00-2.00)
RSRZ outliers	127900	7900 (2.00-2.00)

The table below summarises the geometric issues observed across the polymeric chains and their fit to the electron density. The red, orange, yellow and green segments of the lower bar indicate the fraction of residues that contain outliers for  $\geq 3$ , 2, 1 and 0 types of geometric quality criteria respectively. A grey segment represents the fraction of residues that are not modelled. The numeric value for each fraction is indicated below the corresponding segment, with a dot representing fractions  $\leq 5\%$ . The upper red bar (where present) indicates the fraction of residues that have poor fit to the electron density. The numeric value is given above the bar.

Mol	Chain	Length	Quality of chain
1	A	502	

## 2 Entry composition [i](#)

There are 4 unique types of molecules in this entry. The entry contains 3535 atoms, of which 0 are hydrogens and 0 are deuteriums.

In the tables below, the ZeroOcc column contains the number of atoms modelled with zero occupancy, the AltConf column contains the number of residues with at least one atom in alternate conformation and the Trace column contains the number of residues modelled with at most 2 atoms.

- Molecule 1 is a protein called Asparaginyl endopeptidase.

Mol	Chain	Residues	Atoms					ZeroOcc	AltConf	Trace
			Total	C	N	O	S			
1	A	409	3226	2034	553	614	25	0	2	0

There are 49 discrepancies between the modelled and reference sequences:

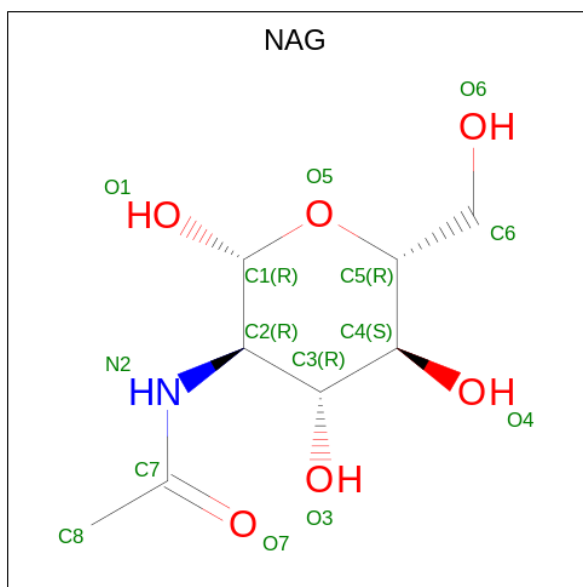
Chain	Residue	Modelled	Actual	Comment	Reference
A	-13	MET	-	expression tag	UNP A0A0P0QM28
A	-12	VAL	-	expression tag	UNP A0A0P0QM28
A	-11	SER	-	expression tag	UNP A0A0P0QM28
A	-10	ALA	-	expression tag	UNP A0A0P0QM28
A	-9	ILE	-	expression tag	UNP A0A0P0QM28
A	-8	VAL	-	expression tag	UNP A0A0P0QM28
A	-7	LEU	-	expression tag	UNP A0A0P0QM28
A	-6	TYR	-	expression tag	UNP A0A0P0QM28
A	-5	VAL	-	expression tag	UNP A0A0P0QM28
A	-4	LEU	-	expression tag	UNP A0A0P0QM28
A	-3	LEU	-	expression tag	UNP A0A0P0QM28
A	-2	ALA	-	expression tag	UNP A0A0P0QM28
A	-1	ALA	-	expression tag	UNP A0A0P0QM28
A	0	ALA	-	expression tag	UNP A0A0P0QM28
A	1	ALA	-	expression tag	UNP A0A0P0QM28
A	2	HIS	-	expression tag	UNP A0A0P0QM28
A	3	SER	-	expression tag	UNP A0A0P0QM28
A	4	ALA	-	expression tag	UNP A0A0P0QM28
A	5	PHE	-	expression tag	UNP A0A0P0QM28
A	6	ALA	-	expression tag	UNP A0A0P0QM28
A	7	ALA	-	expression tag	UNP A0A0P0QM28
A	8	ALA	-	expression tag	UNP A0A0P0QM28
A	9	MET	-	expression tag	UNP A0A0P0QM28
A	10	GLY	-	expression tag	UNP A0A0P0QM28
A	11	HIS	-	expression tag	UNP A0A0P0QM28
A	12	HIS	-	expression tag	UNP A0A0P0QM28
A	13	HIS	-	expression tag	UNP A0A0P0QM28

*Continued on next page...*

Continued from previous page...

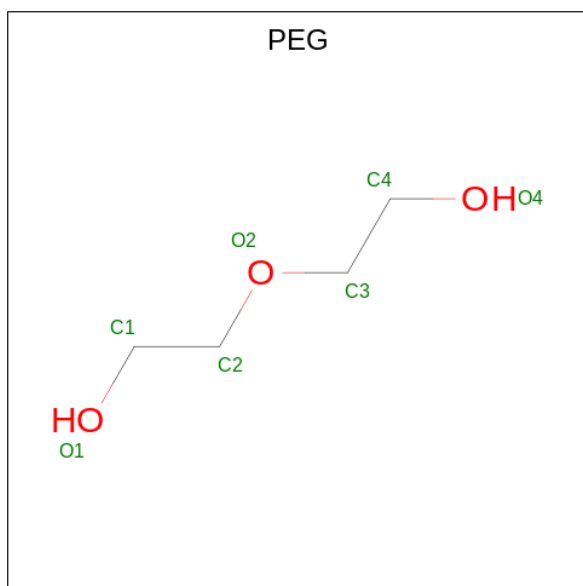
Chain	Residue	Modelled	Actual	Comment	Reference
A	14	HIS	-	expression tag	UNP A0A0P0QM28
A	15	HIS	-	expression tag	UNP A0A0P0QM28
A	16	HIS	-	expression tag	UNP A0A0P0QM28
A	17	SER	-	expression tag	UNP A0A0P0QM28
A	18	SER	-	expression tag	UNP A0A0P0QM28
A	19	GLY	-	expression tag	UNP A0A0P0QM28
A	20	VAL	-	expression tag	UNP A0A0P0QM28
A	21	ASP	-	expression tag	UNP A0A0P0QM28
A	22	LEU	-	expression tag	UNP A0A0P0QM28
A	23	GLY	-	expression tag	UNP A0A0P0QM28
A	24	THR	-	expression tag	UNP A0A0P0QM28
A	25	GLU	-	expression tag	UNP A0A0P0QM28
A	26	ASN	-	expression tag	UNP A0A0P0QM28
A	27	LEU	-	expression tag	UNP A0A0P0QM28
A	28	TYR	-	expression tag	UNP A0A0P0QM28
A	29	PHE	-	expression tag	UNP A0A0P0QM28
A	30	GLN	-	expression tag	UNP A0A0P0QM28
A	31	SER	-	expression tag	UNP A0A0P0QM28
A	32	MET	-	expression tag	UNP A0A0P0QM28
A	179	SNN	ASP	modified residue	UNP A0A0P0QM28
A	183	ALA	PRO	engineered mutation	UNP A0A0P0QM28
A	252	VAL	GLY	engineered mutation	UNP A0A0P0QM28

- Molecule 2 is 2-acetamido-2-deoxy-beta-D-glucopyranose (three-letter code: NAG) (formula:  $C_8H_{15}NO_6$ ).



Mol	Chain	Residues	Atoms				ZeroOcc	AltConf
			Total	C	N	O		
2	A	1	14	8	1	5	0	0

- Molecule 3 is DI(HYDROXYETHYL)ETHER (three-letter code: PEG) (formula: C<sub>4</sub>H<sub>10</sub>O<sub>3</sub>).



Mol	Chain	Residues	Atoms			ZeroOcc	AltConf
			Total	C	O		
3	A	1	7	4	3	0	0

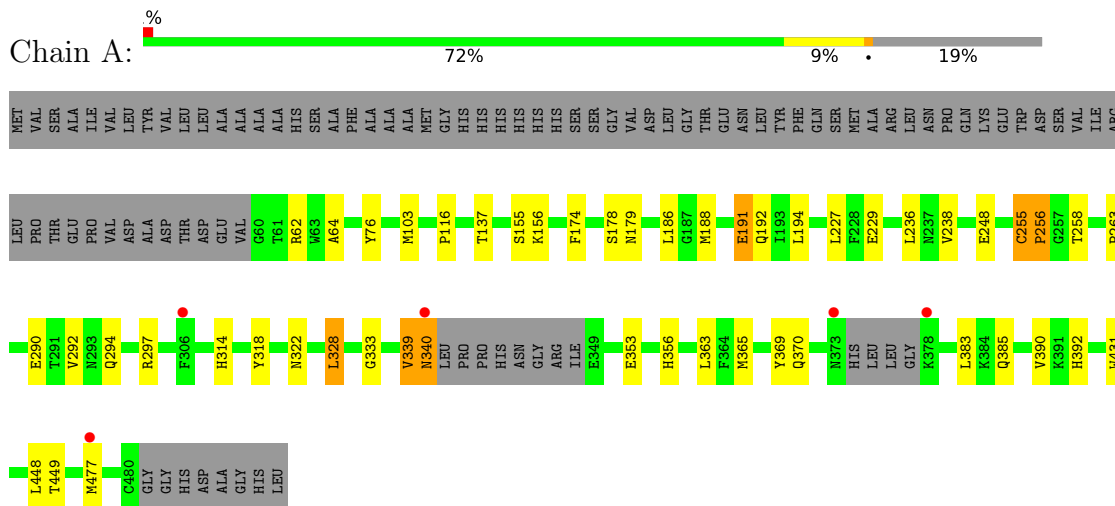
- Molecule 4 is water.

Mol	Chain	Residues	Atoms		ZeroOcc	AltConf
			Total	O		
4	A	288	288	288	0	0

### 3 Residue-property plots [i](#)

These plots are drawn for all protein, RNA, DNA and oligosaccharide chains in the entry. The first graphic for a chain summarises the proportions of the various outlier classes displayed in the second graphic. The second graphic shows the sequence view annotated by issues in geometry and electron density. Residues are color-coded according to the number of geometric quality criteria for which they contain at least one outlier: green = 0, yellow = 1, orange = 2 and red = 3 or more. A red dot above a residue indicates a poor fit to the electron density ( $RSRZ > 2$ ). Stretches of 2 or more consecutive residues without any outlier are shown as a green connector. Residues present in the sample, but not in the model, are shown in grey.

- Molecule 1: Asparaginyl endopeptidase



## 4 Data and refinement statistics

Property	Value	Source
Space group	P 2 21 21	Depositor
Cell constants a, b, c, $\alpha$ , $\beta$ , $\gamma$	44.55Å 79.74Å 135.02Å 90.00° 90.00° 90.00°	Depositor
Resolution (Å)	42.31 – 2.00 42.31 – 2.00	Depositor EDS
% Data completeness (in resolution range)	96.2 (42.31-2.00) 97.0 (42.31-2.00)	Depositor EDS
$R_{merge}$	0.09	Depositor
$R_{sym}$	(Not available)	Depositor
$\langle I/\sigma(I) \rangle$ <sup>1</sup>	1.30 (at 2.00Å)	Xtrriage
Refinement program	PHENIX 1.17_3644	Depositor
R, $R_{free}$	0.193 , 0.205 0.193 , 0.205	Depositor DCC
$R_{free}$ test set	1616 reflections (5.00%)	wwPDB-VP
Wilson B-factor (Å <sup>2</sup> )	30.6	Xtrriage
Anisotropy	0.155	Xtrriage
Bulk solvent $k_{sol}$ (e/Å <sup>3</sup> ), $B_{sol}$ (Å <sup>2</sup> )	0.31 , 38.3	EDS
L-test for twinning <sup>2</sup>	$\langle  L  \rangle = 0.49$ , $\langle L^2 \rangle = 0.33$	Xtrriage
Estimated twinning fraction	No twinning to report.	Xtrriage
$F_o, F_c$ correlation	0.95	EDS
Total number of atoms	3535	wwPDB-VP
Average B, all atoms (Å <sup>2</sup> )	37.0	wwPDB-VP

Xtrriage's analysis on translational NCS is as follows: *The largest off-origin peak in the Patterson function is 6.72% of the height of the origin peak. No significant pseudotranslation is detected.*

<sup>1</sup>Intensities estimated from amplitudes.

<sup>2</sup>Theoretical values of  $\langle |L| \rangle$ ,  $\langle L^2 \rangle$  for acentric reflections are 0.5, 0.333 respectively for untwinned datasets, and 0.375, 0.2 for perfectly twinned datasets.

## 5 Model quality [i](#)

### 5.1 Standard geometry [i](#)

Bond lengths and bond angles in the following residue types are not validated in this section: NAG, PEG, SNN

The Z score for a bond length (or angle) is the number of standard deviations the observed value is removed from the expected value. A bond length (or angle) with  $|Z| > 5$  is considered an outlier worth inspection. RMSZ is the root-mean-square of all Z scores of the bond lengths (or angles).

Mol	Chain	Bond lengths		Bond angles	
		RMSZ	# $ Z  > 5$	RMSZ	# $ Z  > 5$
1	A	0.66	5/3291 (0.2%)	0.69	4/4450 (0.1%)

Chiral center outliers are detected by calculating the chiral volume of a chiral center and verifying if the center is modelled as a planar moiety or with the opposite hand. A planarity outlier is detected by checking planarity of atoms in a peptide group, atoms in a mainchain group or atoms of a sidechain that are expected to be planar.

Mol	Chain	#Chirality outliers	#Planarity outliers
1	A	0	1

All (5) bond length outliers are listed below:

Mol	Chain	Res	Type	Atoms	Z	Observed(Å)	Ideal(Å)
1	A	256	PRO	N-CA	11.93	1.67	1.47
1	A	263	PRO	C-N	7.94	1.49	1.34
1	A	290	GLU	CD-OE1	-6.26	1.18	1.25
1	A	290	GLU	CD-OE2	-5.36	1.19	1.25
1	A	255	CYS	C-N	5.07	1.43	1.34

All (4) bond angle outliers are listed below:

Mol	Chain	Res	Type	Atoms	Z	Observed(°)	Ideal(°)
1	A	256	PRO	N-CA-C	-6.30	95.73	112.10
1	A	256	PRO	CA-N-CD	-5.88	103.27	111.50
1	A	356	HIS	N-CA-CB	-5.12	101.39	110.60
1	A	340	ASN	N-CA-CB	5.07	119.72	110.60

There are no chirality outliers.

All (1) planarity outliers are listed below:



Mol	Chain	Res	Type	Group
1	A	178	SER	Mainchain

## 5.2 Too-close contacts

In the following table, the Non-H and H(model) columns list the number of non-hydrogen atoms and hydrogen atoms in the chain respectively. The H(added) column lists the number of hydrogen atoms added and optimized by MolProbity. The Clashes column lists the number of clashes within the asymmetric unit, whereas Symm-Clashes lists symmetry-related clashes.

Mol	Chain	Non-H	H(model)	H(added)	Clashes	Symm-Clashes
1	A	3226	0	3104	48	0
2	A	14	0	13	3	0
3	A	7	0	10	0	0
4	A	288	0	0	25	0
All	All	3535	0	3127	51	0

The all-atom clashscore is defined as the number of clashes found per 1000 atoms (including hydrogen atoms). The all-atom clashscore for this structure is 8.

All (51) close contacts within the same asymmetric unit are listed below, sorted by their clash magnitude.

Atom-1	Atom-2	Interatomic distance (Å)	Clash overlap (Å)
1:A:256:PRO:N	1:A:256:PRO:CA	1.67	1.31
1:A:255:CYS:SG	4:A:701:HOH:O	2.03	1.15
1:A:340:ASN:N	4:A:601:HOH:O	1.92	0.99
1:A:339:VAL:C	4:A:601:HOH:O	2.05	0.94
1:A:339:VAL:N	4:A:604:HOH:O	2.02	0.92
1:A:340:ASN:HB2	4:A:601:HOH:O	1.74	0.87
1:A:431:TRP:NE1	4:A:603:HOH:O	1.96	0.87
2:A:501:NAG:O5	4:A:602:HOH:O	1.94	0.85
1:A:339:VAL:HG23	4:A:604:HOH:O	1.76	0.84
1:A:340:ASN:CA	4:A:601:HOH:O	2.30	0.78
1:A:256:PRO:N	1:A:256:PRO:C	2.38	0.76
1:A:339:VAL:CA	4:A:604:HOH:O	2.33	0.75
1:A:322:ASN:ND2	4:A:602:HOH:O	2.21	0.73
1:A:363:LEU:HD23	4:A:735:HOH:O	1.89	0.72
1:A:248:GLU:OE2	1:A:314:HIS:ND1	2.23	0.70
1:A:339:VAL:CG2	4:A:604:HOH:O	2.36	0.70
1:A:340:ASN:CB	4:A:601:HOH:O	2.34	0.67
1:A:294:GLN:HG2	1:A:297:ARG:HH21	1.60	0.66
2:A:501:NAG:O6	4:A:605:HOH:O	2.15	0.65

*Continued on next page...*

Continued from previous page...

Atom-1	Atom-2	Interatomic distance (Å)	Clash overlap (Å)
1:A:294:GLN:HG2	1:A:297:ARG:NH2	2.13	0.64
1:A:448:LEU:O	1:A:449:THR:OG1	2.17	0.62
1:A:255:CYS:CB	4:A:701:HOH:O	2.39	0.60
1:A:339:VAL:O	1:A:339:VAL:HG12	2.01	0.60
1:A:365:MET:HE1	1:A:385:GLN:HG2	1.83	0.59
1:A:192:GLN:HA	4:A:625:HOH:O	2.04	0.57
1:A:370:GLN:HA	1:A:370:GLN:OE1	2.03	0.57
1:A:431:TRP:CD1	4:A:603:HOH:O	2.47	0.57
1:A:297:ARG:NH2	4:A:611:HOH:O	2.40	0.53
2:A:501:NAG:C1	4:A:602:HOH:O	2.55	0.53
1:A:292:VAL:HG22	1:A:328:LEU:HD13	1.91	0.52
1:A:229:GLU:HG3	1:A:318:TYR:HE1	1.74	0.52
1:A:229:GLU:HG3	1:A:318:TYR:CE1	2.46	0.51
1:A:258:THR:HB	1:A:353:GLU:HB2	1.93	0.51
1:A:369:TYR:CE1	1:A:383:LEU:HD13	2.46	0.51
1:A:365:MET:CE	1:A:385:GLN:HG2	2.42	0.49
1:A:390:VAL:HG13	4:A:733:HOH:O	2.12	0.48
1:A:186:LEU:HD21	1:A:227:LEU:HD11	1.96	0.48
1:A:191:GLU:OE1	1:A:191:GLU:HA	2.14	0.47
1:A:255:CYS:HB2	4:A:701:HOH:O	2.11	0.45
1:A:392:HIS:HE1	4:A:617:HOH:O	1.99	0.45
1:A:116:PRO:HG3	4:A:632:HOH:O	2.16	0.45
1:A:188:MET:HB2	1:A:192:GLN:HB2	2.00	0.43
1:A:369:TYR:CZ	1:A:383:LEU:HD13	2.53	0.43
1:A:64:ALA:HA	1:A:174:PHE:O	2.20	0.42
1:A:248:GLU:CD	1:A:314:HIS:HD1	2.19	0.42
1:A:155:SER:OG	1:A:156:LYS:HE3	2.21	0.41
1:A:339:VAL:HG12	4:A:601:HOH:O	2.20	0.41
1:A:103:MET:O	1:A:137:THR:HA	2.20	0.41
1:A:236:LEU:O	1:A:238:VAL:HG23	2.22	0.40
1:A:62:ARG:NH1	1:A:333:GLY:HA2	2.36	0.40
1:A:194:LEU:C	1:A:194:LEU:HD23	2.42	0.40

There are no symmetry-related clashes.

## 5.3 Torsion angles [i](#)

### 5.3.1 Protein backbone [i](#)

In the following table, the Percentiles column shows the percent Ramachandran outliers of the chain as a percentile score with respect to all X-ray entries followed by that with respect to entries

of similar resolution.

The Analysed column shows the number of residues for which the backbone conformation was analysed, and the total number of residues.

Mol	Chain	Analysed	Favoured	Allowed	Outliers	Percentiles
1	A	404/502 (80%)	395 (98%)	7 (2%)	2 (0%)	29 23

All (2) Ramachandran outliers are listed below:

Mol	Chain	Res	Type
1	A	76	TYR
1	A	339	VAL

### 5.3.2 Protein sidechains [i](#)

In the following table, the Percentiles column shows the percent sidechain outliers of the chain as a percentile score with respect to all X-ray entries followed by that with respect to entries of similar resolution.

The Analysed column shows the number of residues for which the sidechain conformation was analysed, and the total number of residues.

Mol	Chain	Analysed	Rotameric	Outliers	Percentiles
1	A	349/420 (83%)	346 (99%)	3 (1%)	78 83

All (3) residues with a non-rotameric sidechain are listed below:

Mol	Chain	Res	Type
1	A	191	GLU
1	A	328	LEU
1	A	477	MET

Sometimes sidechains can be flipped to improve hydrogen bonding and reduce clashes. All (1) such sidechains are listed below:

Mol	Chain	Res	Type
1	A	190	ASN

### 5.3.3 RNA [i](#)

There are no RNA molecules in this entry.

## 5.4 Non-standard residues in protein, DNA, RNA chains [i](#)

1 non-standard protein/DNA/RNA residue is modelled in this entry.

In the following table, the Counts columns list the number of bonds (or angles) for which Mogul statistics could be retrieved, the number of bonds (or angles) that are observed in the model and the number of bonds (or angles) that are defined in the Chemical Component Dictionary. The Link column lists molecule types, if any, to which the group is linked. The Z score for a bond length (or angle) is the number of standard deviations the observed value is removed from the expected value. A bond length (or angle) with  $|Z| > 2$  is considered an outlier worth inspection. RMSZ is the root-mean-square of all Z scores of the bond lengths (or angles).

Mol	Type	Chain	Res	Link	Bond lengths			Bond angles		
					Counts	RMSZ	# Z  > 2	Counts	RMSZ	# Z  > 2
1	SNN	A	179	1	5,6,8	2.55	1 (20%)	3,6,11	2.70	2 (66%)

In the following table, the Chirals column lists the number of chiral outliers, the number of chiral centers analysed, the number of these observed in the model and the number defined in the Chemical Component Dictionary. Similar counts are reported in the Torsion and Rings columns. '-' means no outliers of that kind were identified.

Mol	Type	Chain	Res	Link	Chirals	Torsions	Rings
1	SNN	A	179	1	-	3/3/5/12	-

All (1) bond length outliers are listed below:

Mol	Chain	Res	Type	Atoms	Z	Observed(Å)	Ideal(Å)
1	A	179	SNN	C4-C5	5.31	1.63	1.49

All (2) bond angle outliers are listed below:

Mol	Chain	Res	Type	Atoms	Z	Observed(°)	Ideal(°)
1	A	179	SNN	C4-CA-C	-3.65	104.62	111.44
1	A	179	SNN	CA-C4-C5	-2.81	103.78	114.44

There are no chirality outliers.

All (3) torsion outliers are listed below:

Mol	Chain	Res	Type	Atoms
1	A	179	SNN	O-C-CA-C4
1	A	179	SNN	C5-C4-CA-N
1	A	179	SNN	CA-C4-C5-O5

There are no ring outliers.

No monomer is involved in short contacts.

## 5.5 Carbohydrates [i](#)

There are no monosaccharides in this entry.

## 5.6 Ligand geometry [i](#)

2 ligands are modelled in this entry.

In the following table, the Counts columns list the number of bonds (or angles) for which Mogul statistics could be retrieved, the number of bonds (or angles) that are observed in the model and the number of bonds (or angles) that are defined in the Chemical Component Dictionary. The Link column lists molecule types, if any, to which the group is linked. The Z score for a bond length (or angle) is the number of standard deviations the observed value is removed from the expected value. A bond length (or angle) with  $|Z| > 2$  is considered an outlier worth inspection. RMSZ is the root-mean-square of all Z scores of the bond lengths (or angles).

Mol	Type	Chain	Res	Link	Bond lengths			Bond angles		
					Counts	RMSZ	# Z  > 2	Counts	RMSZ	# Z  > 2
2	NAG	A	501	1	14,14,15	0.47	0	17,19,21	0.44	0
3	PEG	A	502	-	6,6,6	0.50	0	5,5,5	0.22	0

In the following table, the Chirals column lists the number of chiral outliers, the number of chiral centers analysed, the number of these observed in the model and the number defined in the Chemical Component Dictionary. Similar counts are reported in the Torsion and Rings columns. '-' means no outliers of that kind were identified.

Mol	Type	Chain	Res	Link	Chirals	Torsions	Rings
2	NAG	A	501	1	-	2/6/23/26	0/1/1/1
3	PEG	A	502	-	-	2/4/4/4	-

There are no bond length outliers.

There are no bond angle outliers.

There are no chirality outliers.

All (4) torsion outliers are listed below:

Mol	Chain	Res	Type	Atoms
2	A	501	NAG	O5-C5-C6-O6
2	A	501	NAG	C4-C5-C6-O6
3	A	502	PEG	O1-C1-C2-O2
3	A	502	PEG	C1-C2-O2-C3

There are no ring outliers.

1 monomer is involved in 3 short contacts:

Mol	Chain	Res	Type	Clashes	Symm-Clashes
2	A	501	NAG	3	0

## 5.7 Other polymers [i](#)

There are no such residues in this entry.

## 5.8 Polymer linkage issues [i](#)

There are no chain breaks in this entry.

## 6 Fit of model and data [i](#)

### 6.1 Protein, DNA and RNA chains [i](#)

In the following table, the column labelled ‘#RSRZ> 2’ contains the number (and percentage) of RSRZ outliers, followed by percent RSRZ outliers for the chain as percentile scores relative to all X-ray entries and entries of similar resolution. The OWAB column contains the minimum, median, 95<sup>th</sup> percentile and maximum values of the occupancy-weighted average B-factor per residue. The column labelled ‘Q< 0.9’ lists the number of (and percentage) of residues with an average occupancy less than 0.9.

Mol	Chain	Analysed	<RSRZ>	#RSRZ>2	OWAB(Å <sup>2</sup> )	Q<0.9
1	A	408/502 (81%)	-0.24	5 (1%) 79 78	23, 34, 56, 82	0

All (5) RSRZ outliers are listed below:

Mol	Chain	Res	Type	RSRZ
1	A	373	ASN	2.8
1	A	306	PHE	2.7
1	A	340	ASN	2.4
1	A	378	LYS	2.4
1	A	477	MET	2.2

### 6.2 Non-standard residues in protein, DNA, RNA chains [i](#)

In the following table, the Atoms column lists the number of modelled atoms in the group and the number defined in the chemical component dictionary. The B-factors column lists the minimum, median, 95<sup>th</sup> percentile and maximum values of B factors of atoms in the group. The column labelled ‘Q< 0.9’ lists the number of atoms with occupancy less than 0.9.

Mol	Type	Chain	Res	Atoms	RSCC	RSR	B-factors(Å <sup>2</sup> )	Q<0.9
1	SNN	A	179	7/8	0.97	0.12	21,26,28,30	0

### 6.3 Carbohydrates [i](#)

There are no monosaccharides in this entry.

### 6.4 Ligands [i](#)

In the following table, the Atoms column lists the number of modelled atoms in the group and the number defined in the chemical component dictionary. The B-factors column lists the minimum,

median, 95<sup>th</sup> percentile and maximum values of B factors of atoms in the group. The column labelled 'Q< 0.9' lists the number of atoms with occupancy less than 0.9.

Mol	Type	Chain	Res	Atoms	RSCC	RSR	B-factors(Å <sup>2</sup> )	Q<0.9
2	NAG	A	501	14/15	0.84	0.29	63,79,89,90	0
3	PEG	A	502	7/7	0.93	0.17	39,53,55,56	0

## 6.5 Other polymers [i](#)

There are no such residues in this entry.