



Full wwPDB X-ray Structure Validation Report ⓘ

Sep 11, 2023 – 03:47 PM EDT

PDB ID : 4LL0
Title : EGFR L858R/T790M in complex with PD168393
Authors : Yun, C.H.; Eck, M.J.
Deposited on : 2013-07-09
Resolution : 4.00 Å(reported)

This is a Full wwPDB X-ray Structure Validation Report for a publicly released PDB entry.

We welcome your comments at validation@mail.wwpdb.org

A user guide is available at

<https://www.wwpdb.org/validation/2017/XrayValidationReportHelp>

with specific help available everywhere you see the ⓘ symbol.

The types of validation reports are described at

<http://www.wwpdb.org/validation/2017/FAQs#types>.

The following versions of software and data (see [references ⓘ](#)) were used in the production of this report:

MolProbity : 4.02b-467
Mogul : 1.8.5 (274361), CSD as541be (2020)
Xtriage (Phenix) : 1.13
EDS : 2.35.1
buster-report : 1.1.7 (2018)
Percentile statistics : 20191225.v01 (using entries in the PDB archive December 25th 2019)
Refmac : 5.8.0158
CCP4 : 7.0.044 (Gargrove)
Ideal geometry (proteins) : Engh & Huber (2001)
Ideal geometry (DNA, RNA) : Parkinson et al. (1996)
Validation Pipeline (wwPDB-VP) : 2.35.1

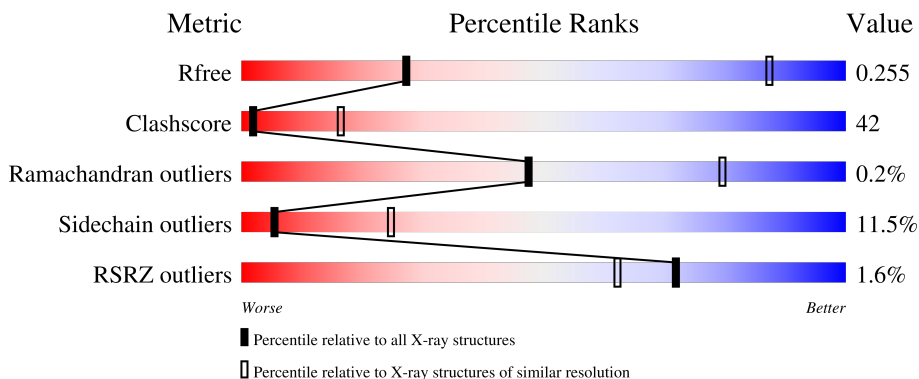
1 Overall quality at a glance

The following experimental techniques were used to determine the structure:

X-RAY DIFFRACTION

The reported resolution of this entry is 4.00 Å.

Percentile scores (ranging between 0-100) for global validation metrics of the entry are shown in the following graphic. The table shows the number of entries on which the scores are based.



Metric	Whole archive (#Entries)	Similar resolution (#Entries, resolution range(Å))
R_{free}	130704	1087 (4.30-3.70)
Clashscore	141614	1148 (4.30-3.70)
Ramachandran outliers	138981	1108 (4.30-3.70)
Sidechain outliers	138945	1099 (4.30-3.70)
RSRZ outliers	127900	1028 (4.34-3.66)

The table below summarises the geometric issues observed across the polymeric chains and their fit to the electron density. The red, orange, yellow and green segments of the lower bar indicate the fraction of residues that contain outliers for ≥ 3 , 2, 1 and 0 types of geometric quality criteria respectively. A grey segment represents the fraction of residues that are not modelled. The numeric value for each fraction is indicated below the corresponding segment, with a dot representing fractions $\leq 5\%$. The upper red bar (where present) indicates the fraction of residues that have poor fit to the electron density. The numeric value is given above the bar.

Mol	Chain	Length	Quality of chain
1	A	331	 41% 39% 7% 12%
1	B	331	 40% 37% 7% 15%

The following table lists non-polymeric compounds, carbohydrate monomers and non-standard residues in protein, DNA, RNA chains that are outliers for geometric or electron-density-fit criteria:

Mol	Type	Chain	Res	Chirality	Geometry	Clashes	Electron density
2	YUN	A	1101	-	-	X	-
2	YUN	B	1101	-	-	X	X

2 Entry composition

There are 2 unique types of molecules in this entry. The entry contains 4552 atoms, of which 0 are hydrogens and 0 are deuteriums.

In the tables below, the ZeroOcc column contains the number of atoms modelled with zero occupancy, the AltConf column contains the number of residues with at least one atom in alternate conformation and the Trace column contains the number of residues modelled with at most 2 atoms.

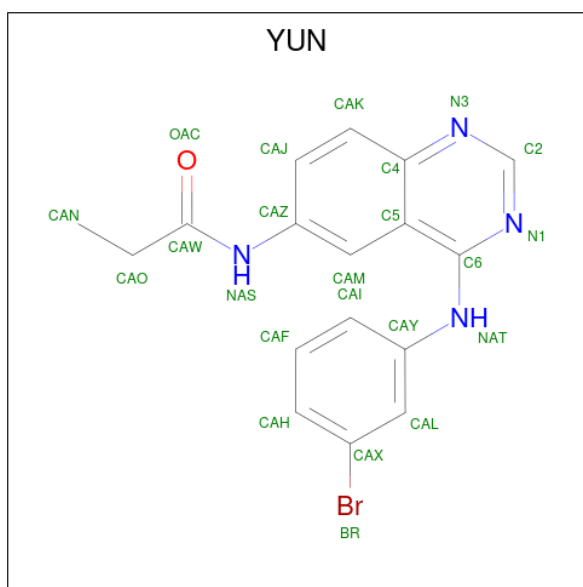
- Molecule 1 is a protein called Epidermal growth factor receptor.

Mol	Chain	Residues	Atoms					ZeroOcc	AltConf	Trace
			Total	C	N	O	S			
1	A	291	2287	1471	383	418	15	0	0	0
1	B	281	2219	1434	371	399	15	0	0	0

There are 8 discrepancies between the modelled and reference sequences:

Chain	Residue	Modelled	Actual	Comment	Reference
A	692	GLY	-	expression tag	UNP P00533
A	693	SER	-	expression tag	UNP P00533
A	790	MET	THR	engineered mutation	UNP P00533
A	858	ARG	LEU	engineered mutation	UNP P00533
B	692	GLY	-	expression tag	UNP P00533
B	693	SER	-	expression tag	UNP P00533
B	790	MET	THR	engineered mutation	UNP P00533
B	858	ARG	LEU	engineered mutation	UNP P00533

- Molecule 2 is N-{4-[(3-bromophenyl)amino]quinazolin-6-yl}propanamide (three-letter code: YUN) (formula: C₁₇H₁₅BrN₄O).



Mol	Chain	Residues	Atoms				ZeroOcc	AltConf	
			Total	Br	C	N			O
2	A	1	23	1	17	4	1	0	0
2	B	1	23	1	17	4	1	0	0

ALA	LEU	MET	ASP	GLU	GLU	ASP	MET	ASP	ASP	VAL	V1011	D1012	A1013	D1014	E1015	Y1016	L1017	ILE	PRO	GLN	GLN	GLY
-----	-----	-----	-----	-----	-----	-----	-----	-----	-----	-----	-------	-------	-------	-------	-------	-------	-------	-----	-----	-----	-----	-----

4 Data and refinement statistics

Property	Value	Source
Space group	P 21 21 21	Depositor
Cell constants a, b, c, α , β , γ	61.64Å 72.71Å 167.03Å 90.00° 90.00° 90.00°	Depositor
Resolution (Å)	49.60 – 4.00 49.59 – 3.99	Depositor EDS
% Data completeness (in resolution range)	95.8 (49.60-4.00) 95.5 (49.59-3.99)	Depositor EDS
R_{merge}	0.10	Depositor
R_{sym}	(Not available)	Depositor
$\langle I/\sigma(I) \rangle$ ¹	2.90 (at 4.00Å)	Xtrriage
Refinement program	CNS 1.3	Depositor
R, R_{free}	0.238 , 0.257 0.228 , 0.255	Depositor DCC
R_{free} test set	334 reflections (5.15%)	wwPDB-VP
Wilson B-factor (Å ²)	200.5	Xtrriage
Anisotropy	0.540	Xtrriage
Bulk solvent k_{sol} (e/Å ³), B_{sol} (Å ²)	0.33 , 231.2	EDS
L-test for twinning ²	$\langle L \rangle = 0.46$, $\langle L^2 \rangle = 0.29$	Xtrriage
Estimated twinning fraction	No twinning to report.	Xtrriage
F_o, F_c correlation	0.95	EDS
Total number of atoms	4552	wwPDB-VP
Average B, all atoms (Å ²)	257.0	wwPDB-VP

Xtrriage's analysis on translational NCS is as follows: *The largest off-origin peak in the Patterson function is 6.31% of the height of the origin peak. No significant pseudotranslation is detected.*

¹Intensities estimated from amplitudes.

²Theoretical values of $\langle |L| \rangle$, $\langle L^2 \rangle$ for acentric reflections are 0.5, 0.333 respectively for untwinned datasets, and 0.375, 0.2 for perfectly twinned datasets.

5 Model quality [i](#)

5.1 Standard geometry [i](#)

Bond lengths and bond angles in the following residue types are not validated in this section: YUN

The Z score for a bond length (or angle) is the number of standard deviations the observed value is removed from the expected value. A bond length (or angle) with $|Z| > 5$ is considered an outlier worth inspection. RMSZ is the root-mean-square of all Z scores of the bond lengths (or angles).

Mol	Chain	Bond lengths		Bond angles	
		RMSZ	# Z >5	RMSZ	# Z >5
1	A	0.69	1/2334 (0.0%)	1.10	20/3163 (0.6%)
1	B	0.66	0/2267	1.00	13/3073 (0.4%)
All	All	0.68	1/4601 (0.0%)	1.05	33/6236 (0.5%)

Chiral center outliers are detected by calculating the chiral volume of a chiral center and verifying if the center is modelled as a planar moiety or with the opposite hand. A planarity outlier is detected by checking planarity of atoms in a peptide group, atoms in a mainchain group or atoms of a sidechain that are expected to be planar.

Mol	Chain	#Chirality outliers	#Planarity outliers
1	A	0	1

All (1) bond length outliers are listed below:

Mol	Chain	Res	Type	Atoms	Z	Observed(Å)	Ideal(Å)
1	A	858	ARG	N-CA	-5.18	1.35	1.46

All (33) bond angle outliers are listed below:

Mol	Chain	Res	Type	Atoms	Z	Observed(°)	Ideal(°)
1	A	776	ARG	NE-CZ-NH2	-13.49	113.55	120.30
1	A	962	ARG	NE-CZ-NH2	-12.84	113.88	120.30
1	A	831	ARG	NE-CZ-NH1	-12.82	113.89	120.30
1	B	776	ARG	NE-CZ-NH1	-12.52	114.04	120.30
1	A	962	ARG	NE-CZ-NH1	11.95	126.27	120.30
1	A	831	ARG	NE-CZ-NH2	11.65	126.12	120.30
1	A	776	ARG	NE-CZ-NH1	11.56	126.08	120.30
1	B	841	ARG	NE-CZ-NH2	-11.50	114.55	120.30
1	B	776	ARG	NE-CZ-NH2	11.07	125.83	120.30
1	B	841	ARG	NE-CZ-NH1	11.00	125.80	120.30

Continued on next page...

Continued from previous page...

Mol	Chain	Res	Type	Atoms	Z	Observed(°)	Ideal(°)
1	A	841	ARG	NE-CZ-NH1	-9.10	115.75	120.30
1	A	841	ARG	NE-CZ-NH2	8.46	124.53	120.30
1	A	833	LEU	CB-CG-CD2	-7.10	98.94	111.00
1	A	857	GLY	N-CA-C	-6.93	95.78	113.10
1	A	962	ARG	CD-NE-CZ	6.71	132.99	123.60
1	A	861	LEU	CA-CB-CG	6.55	130.37	115.30
1	A	831	ARG	CD-NE-CZ	6.45	132.63	123.60
1	B	704	LEU	CB-CG-CD1	-6.44	100.06	111.00
1	A	783	THR	N-CA-C	-6.05	94.66	111.00
1	A	857	GLY	C-N-CA	-5.85	107.07	121.70
1	A	782	LEU	CA-CB-CG	-5.66	102.29	115.30
1	B	841	ARG	CD-NE-CZ	5.61	131.46	123.60
1	B	782	LEU	CA-CB-CG	-5.59	102.43	115.30
1	A	776	ARG	CD-NE-CZ	5.54	131.36	123.60
1	B	760	LEU	CA-CB-CG	-5.33	103.04	115.30
1	B	776	ARG	CD-NE-CZ	5.32	131.04	123.60
1	B	728	LYS	N-CA-C	-5.30	96.68	111.00
1	A	718	LEU	CB-CG-CD2	-5.27	102.04	111.00
1	A	721	GLY	N-CA-C	-5.14	100.24	113.10
1	B	783	THR	N-CA-C	-5.13	97.14	111.00
1	A	728	LYS	N-CA-C	-5.09	97.27	111.00
1	B	704	LEU	CA-CB-CG	-5.04	103.70	115.30
1	B	854	THR	N-CA-C	5.01	124.53	111.00

There are no chirality outliers.

All (1) planarity outliers are listed below:

Mol	Chain	Res	Type	Group
1	A	856	PHE	Peptide

5.2 Too-close contacts

In the following table, the Non-H and H(model) columns list the number of non-hydrogen atoms and hydrogen atoms in the chain respectively. The H(added) column lists the number of hydrogen atoms added and optimized by MolProbity. The Clashes column lists the number of clashes within the asymmetric unit, whereas Symm-Clashes lists symmetry-related clashes.

Mol	Chain	Non-H	H(model)	H(added)	Clashes	Symm-Clashes
1	A	2287	0	2278	207	0
1	B	2219	0	2241	171	0
2	A	23	0	14	12	0

Continued on next page...

Continued from previous page...

Mol	Chain	Non-H	H(model)	H(added)	Clashes	Symm-Clashes
2	B	23	0	14	7	0
All	All	4552	0	4547	379	0

The all-atom clashscore is defined as the number of clashes found per 1000 atoms (including hydrogen atoms). The all-atom clashscore for this structure is 42.

All (379) close contacts within the same asymmetric unit are listed below, sorted by their clash magnitude.

Atom-1	Atom-2	Interatomic distance (Å)	Clash overlap (Å)
1:B:836:ARG:CB	1:B:860:LYS:HE2	1.60	1.32
1:B:860:LYS:HE3	1:B:891:TYR:CD2	1.69	1.27
1:B:836:ARG:CB	1:B:860:LYS:CE	2.25	1.14
1:A:982:GLN:HA	1:A:982:GLN:OE1	1.44	1.13
1:A:860:LYS:NZ	1:A:891:TYR:HD2	1.46	1.12
1:B:698:ALA:CB	1:B:699:PRO:CD	2.29	1.10
1:A:833:LEU:HD23	1:A:834:VAL:N	1.66	1.10
1:B:698:ALA:HB1	1:B:699:PRO:HD3	1.26	1.08
1:B:698:ALA:CB	1:B:699:PRO:HD3	1.88	1.00
1:A:724:GLY:O	1:A:725:THR:HG22	1.60	1.00
1:B:1012:ASP:HB2	1:B:1015:GLU:HG3	1.45	0.98
1:A:860:LYS:NZ	1:A:891:TYR:CD2	2.23	0.98
1:B:860:LYS:CE	1:B:891:TYR:CD2	2.49	0.96
1:A:718:LEU:HB2	1:A:726:VAL:CG1	1.95	0.96
1:A:853:ILE:CD1	1:A:853:ILE:N	2.30	0.95
1:A:853:ILE:N	1:A:853:ILE:HD12	1.80	0.94
1:A:726:VAL:CG1	1:A:727:TYR:N	2.30	0.94
1:B:833:LEU:HG	1:B:861:LEU:HD13	1.48	0.93
1:A:1011:VAL:CG1	1:A:1015:GLU:HG2	1.98	0.93
1:A:708:LYS:HB3	1:B:931:GLU:HB2	1.51	0.92
2:A:1101:YUN:N1	2:A:1101:YUN:H1	1.84	0.91
2:B:1101:YUN:H1	2:B:1101:YUN:N1	1.84	0.91
1:A:1011:VAL:HG11	1:A:1015:GLU:HG2	1.50	0.90
1:A:718:LEU:CB	1:A:726:VAL:HG11	2.01	0.90
1:B:795:PHE:HB2	1:B:845:VAL:HB	1.54	0.90
1:B:698:ALA:HB3	1:B:699:PRO:CD	2.02	0.89
1:A:739:LYS:O	1:A:1010:VAL:HA	1.73	0.89
1:A:753:PRO:CD	1:A:754:LYS:H	1.86	0.88
1:B:1016:TYR:O	1:B:1017:LEU:HD23	1.74	0.88
1:B:698:ALA:HB1	1:B:699:PRO:CD	1.98	0.87
1:B:698:ALA:HB3	1:B:699:PRO:HD2	1.56	0.86
2:A:1101:YUN:H6	2:A:1101:YUN:OAC	1.77	0.85

Continued on next page...

Continued from previous page...

Atom-1	Atom-2	Interatomic distance (Å)	Clash overlap (Å)
2:B:1101:YUN:OAC	2:B:1101:YUN:H6	1.76	0.85
1:B:923:ILE:HA	1:B:926:ILE:HD12	1.59	0.85
1:A:726:VAL:O	1:A:727:TYR:CD1	2.29	0.85
1:A:795:PHE:HB2	1:A:845:VAL:HB	1.59	0.84
1:A:923:ILE:HA	1:A:926:ILE:HD12	1.59	0.84
1:A:712:PHE:HB3	1:A:731:TRP:HA	1.59	0.84
1:A:833:LEU:HD23	1:A:833:LEU:C	1.96	0.83
1:A:854:THR:HG23	1:A:854:THR:O	1.79	0.82
1:A:718:LEU:HB2	1:A:726:VAL:HG12	1.62	0.81
1:B:712:PHE:HB3	1:B:731:TRP:HA	1.60	0.81
1:B:793:MET:H	2:B:1101:YUN:H8	1.46	0.81
1:A:718:LEU:HB2	1:A:726:VAL:HG11	1.59	0.81
1:A:1015:GLU:CA	1:A:1015:GLU:OE2	2.30	0.80
1:B:797:CYS:H	2:B:1101:YUN:H15	1.45	0.80
1:A:726:VAL:HG12	1:A:727:TYR:N	1.96	0.79
1:A:723:PHE:N	1:A:723:PHE:CD1	2.44	0.79
1:B:1016:TYR:O	1:B:1017:LEU:CD2	2.30	0.79
1:B:1016:TYR:O	1:B:1017:LEU:CG	2.30	0.79
1:A:835:HIS:CE1	1:A:855:ASP:O	2.35	0.79
1:A:797:CYS:H	2:A:1101:YUN:H15	1.47	0.79
1:A:753:PRO:HD2	1:A:754:LYS:H	1.46	0.78
1:A:936:PRO:HG2	1:A:939:CYS:SG	2.22	0.78
1:A:877:PRO:HG2	1:A:877:PRO:O	1.81	0.78
1:B:833:LEU:HD23	1:B:834:VAL:N	1.97	0.78
1:B:856:PHE:HD1	1:B:859:ALA:CB	1.97	0.77
1:B:883:LEU:HD12	1:B:886:ILE:HD12	1.66	0.77
1:A:723:PHE:HB2	1:A:748:ARG:CB	2.15	0.77
1:A:860:LYS:HZ1	1:A:891:TYR:HD2	0.80	0.77
1:A:753:PRO:CG	1:A:754:LYS:N	2.48	0.77
1:B:877:PRO:O	1:B:877:PRO:HG2	1.84	0.77
1:B:1012:ASP:HB2	1:B:1015:GLU:CG	2.16	0.76
1:A:853:ILE:CD1	1:A:853:ILE:H	1.97	0.75
1:A:724:GLY:C	1:A:725:THR:CG2	2.54	0.75
1:A:718:LEU:HD22	2:A:1101:YUN:CAO	2.16	0.75
1:A:723:PHE:H	1:A:723:PHE:HD1	1.34	0.74
1:A:853:ILE:H	1:A:853:ILE:HD13	1.52	0.74
1:A:726:VAL:HG13	1:A:727:TYR:N	2.01	0.74
1:A:793:MET:H	2:A:1101:YUN:H8	1.51	0.74
1:B:836:ARG:CB	1:B:860:LYS:NZ	2.51	0.74
1:A:718:LEU:CB	1:A:726:VAL:CG1	2.64	0.74
1:A:833:LEU:C	1:A:833:LEU:CD2	2.56	0.73

Continued on next page...

Continued from previous page...

Atom-1	Atom-2	Interatomic distance (Å)	Clash overlap (Å)
2:B:1101:YUN:N1	2:B:1101:YUN:CAL	2.47	0.73
1:B:836:ARG:CB	1:B:860:LYS:HZ3	2.03	0.72
1:A:753:PRO:HG2	1:A:754:LYS:N	2.05	0.72
1:B:1016:TYR:O	1:B:1017:LEU:HG	1.89	0.72
1:B:860:LYS:HE3	1:B:891:TYR:HD2	1.49	0.72
1:A:715:ILE:HD11	1:A:730:LEU:HG	1.72	0.71
1:B:715:ILE:HD11	1:B:730:LEU:HG	1.73	0.71
1:A:724:GLY:O	1:A:725:THR:CG2	2.39	0.71
1:A:753:PRO:CD	1:A:754:LYS:N	2.52	0.71
1:A:883:LEU:HD12	1:A:886:ILE:HD12	1.70	0.71
1:A:753:PRO:CG	1:A:754:LYS:H	2.02	0.71
1:A:718:LEU:HB3	1:A:726:VAL:HG11	1.72	0.71
1:B:802:VAL:O	1:B:806:LYS:HB3	1.91	0.70
2:A:1101:YUN:N1	2:A:1101:YUN:CAL	2.47	0.70
1:B:984:ASP:OD1	1:B:984:ASP:C	2.30	0.70
1:A:1015:GLU:OE2	1:A:1015:GLU:HA	1.90	0.69
1:B:819:VAL:HG22	1:B:968:PHE:HB3	1.74	0.69
1:A:976:GLN:NE2	1:A:984:ASP:OD2	2.26	0.69
1:A:738:VAL:CG2	1:A:1011:VAL:HG23	2.24	0.68
1:A:1011:VAL:HG11	1:A:1015:GLU:CG	2.21	0.68
1:B:803:ARG:O	1:B:806:LYS:HG2	1.93	0.68
1:A:819:VAL:HG22	1:A:968:PHE:HB3	1.76	0.68
1:A:877:PRO:O	1:A:877:PRO:CG	2.42	0.68
1:A:835:HIS:O	1:A:836:ARG:CB	2.43	0.67
1:A:783:THR:OG1	1:A:787:GLN:NE2	2.27	0.67
1:A:856:PHE:HB3	1:A:859:ALA:HB2	1.76	0.66
1:A:724:GLY:C	1:A:725:THR:HG22	2.16	0.66
1:B:778:LEU:HD11	1:B:791:GLN:HG2	1.76	0.66
1:A:982:GLN:OE1	1:A:982:GLN:CA	2.30	0.66
1:A:833:LEU:HD23	1:A:834:VAL:H	1.58	0.66
1:A:802:VAL:O	1:A:806:LYS:HB3	1.96	0.66
1:A:1016:TYR:O	1:A:1017:LEU:C	2.34	0.66
1:A:803:ARG:O	1:A:806:LYS:HG2	1.96	0.65
1:A:985:GLU:OE1	1:A:985:GLU:N	2.30	0.65
1:A:726:VAL:HG13	1:A:727:TYR:H	1.61	0.65
1:A:856:PHE:O	1:A:859:ALA:N	2.30	0.65
1:A:791:GLN:CG	1:A:1013:ALA:HB2	2.27	0.65
1:A:1015:GLU:OE2	1:A:1015:GLU:N	2.30	0.65
1:B:858:ARG:HD2	1:B:860:LYS:HZ2	1.61	0.64
1:B:877:PRO:O	1:B:877:PRO:CG	2.45	0.64
1:A:856:PHE:O	1:A:857:GLY:C	2.35	0.64

Continued on next page...

Continued from previous page...

Atom-1	Atom-2	Interatomic distance (Å)	Clash overlap (Å)
1:A:777:LEU:HA	1:A:790:MET:HG3	1.80	0.64
1:B:835:HIS:CE1	1:B:855:ASP:O	2.52	0.63
1:B:856:PHE:HB3	1:B:859:ALA:HB2	1.80	0.63
1:A:815:LEU:O	1:A:819:VAL:HG23	1.99	0.63
1:A:805:HIS:O	1:A:809:ILE:HG13	2.00	0.62
1:B:860:LYS:CE	1:B:891:TYR:HD2	2.09	0.62
1:B:856:PHE:HD1	1:B:859:ALA:HB2	1.64	0.62
1:A:736:GLU:CD	1:A:1016:TYR:HH	2.03	0.61
1:A:791:GLN:HB2	1:A:1013:ALA:HB2	1.82	0.61
1:A:833:LEU:CD2	1:A:834:VAL:N	2.54	0.61
1:B:968:PHE:HA	1:B:971:MET:HE3	1.83	0.61
1:A:933:LEU:HB2	1:A:951:TRP:CH2	2.35	0.61
1:A:968:PHE:HA	1:A:971:MET:HE3	1.82	0.61
1:A:1011:VAL:HG12	1:A:1015:GLU:HG2	1.81	0.61
1:B:856:PHE:CD1	1:B:859:ALA:HB2	2.35	0.61
1:A:738:VAL:HG21	1:A:1011:VAL:HG23	1.83	0.61
1:B:712:PHE:CB	1:B:731:TRP:HA	2.31	0.61
1:A:856:PHE:O	1:A:859:ALA:HB2	2.01	0.60
1:A:844:LEU:CD1	1:A:854:THR:HG21	2.31	0.60
1:A:1014:ASP:OD2	1:A:1014:ASP:N	2.33	0.60
1:B:858:ARG:O	1:B:859:ALA:HB3	2.01	0.60
1:B:903:THR:O	1:B:906:GLU:HB2	2.02	0.59
1:A:835:HIS:NE2	1:A:855:ASP:O	2.35	0.59
1:A:856:PHE:O	1:A:858:ARG:N	2.36	0.59
1:B:749:GLU:O	1:B:750:ALA:C	2.41	0.59
1:B:815:LEU:O	1:B:819:VAL:HG23	2.03	0.59
1:B:819:VAL:HG22	1:B:968:PHE:CB	2.33	0.59
1:B:751:THR:HG23	1:B:751:THR:O	2.02	0.59
1:B:856:PHE:HD1	1:B:859:ALA:HB1	1.65	0.59
1:B:718:LEU:HD11	1:B:728:LYS:HB2	1.85	0.59
1:B:829:GLU:HA	1:B:893:HIS:CE1	2.38	0.58
1:A:723:PHE:CD1	1:A:723:PHE:O	2.56	0.58
1:B:699:PRO:CG	1:B:699:PRO:O	2.51	0.58
1:B:777:LEU:HA	1:B:790:MET:HG3	1.85	0.58
1:A:908:MET:HG2	1:A:939:CYS:SG	2.43	0.58
1:B:844:LEU:CD1	1:B:854:THR:HG21	2.33	0.58
1:A:753:PRO:HG2	1:A:754:LYS:H	1.65	0.58
1:B:860:LYS:NZ	1:B:891:TYR:CE2	2.72	0.58
1:B:831:ARG:C	1:B:832:ARG:HG2	2.24	0.58
1:A:718:LEU:HD22	2:A:1101:YUN:H12	1.86	0.58
1:A:791:GLN:CD	1:A:1013:ALA:HB3	2.23	0.58

Continued on next page...

Continued from previous page...

Atom-1	Atom-2	Interatomic distance (Å)	Clash overlap (Å)
1:B:805:HIS:O	1:B:809:ILE:HG13	2.02	0.58
1:B:933:LEU:HB2	1:B:951:TRP:CH2	2.38	0.57
1:A:712:PHE:CB	1:A:731:TRP:HA	2.32	0.57
1:A:931:GLU:O	1:A:932:ARG:HG2	2.05	0.57
1:A:791:GLN:CD	1:A:1013:ALA:CB	2.74	0.57
1:B:699:PRO:CD	1:B:699:PRO:O	2.52	0.56
1:A:923:ILE:HD13	1:A:926:ILE:HD12	1.86	0.56
1:B:833:LEU:HG	1:B:861:LEU:CD1	2.30	0.56
1:A:778:LEU:HD11	1:A:791:GLN:HB2	1.87	0.56
1:A:855:ASP:C	1:A:856:PHE:HD2	2.08	0.56
1:A:736:GLU:O	1:A:738:VAL:HG12	2.06	0.56
1:A:853:ILE:HG22	1:A:854:THR:N	2.20	0.56
1:A:922:GLU:O	1:A:926:ILE:HG13	2.06	0.56
1:B:746:GLU:HA	1:B:787:GLN:HG2	1.87	0.56
1:A:898:TRP:CD1	1:A:898:TRP:C	2.79	0.56
1:B:795:PHE:CE1	1:B:847:THR:HA	2.40	0.55
1:A:726:VAL:O	1:A:727:TYR:CG	2.60	0.55
1:A:829:GLU:HA	1:A:893:HIS:CE1	2.42	0.55
1:B:776:ARG:O	1:B:776:ARG:HG3	2.05	0.55
1:B:976:GLN:NE2	1:B:984:ASP:OD2	2.40	0.55
2:B:1101:YUN:OAC	2:B:1101:YUN:CAM	2.46	0.55
1:B:860:LYS:CD	1:B:891:TYR:HD2	2.20	0.55
1:A:819:VAL:HG22	1:A:968:PHE:CB	2.37	0.55
1:B:769:VAL:HB	1:B:827:TYR:HE2	1.70	0.54
1:B:846:LYS:HD3	1:B:850:HIS:ND1	2.23	0.54
1:A:718:LEU:CD2	2:A:1101:YUN:H11	2.36	0.54
1:A:723:PHE:N	1:A:723:PHE:HD1	1.95	0.54
1:A:714:LYS:HD3	1:A:727:TYR:CD2	2.42	0.54
1:A:775:CYS:SG	1:A:854:THR:HB	2.47	0.54
2:A:1101:YUN:OAC	2:A:1101:YUN:CAM	2.46	0.54
1:B:703:LEU:HD23	1:B:703:LEU:H	1.73	0.54
1:B:1012:ASP:CB	1:B:1015:GLU:HB2	2.38	0.54
1:A:718:LEU:HD13	2:A:1101:YUN:CAW	2.38	0.54
1:A:766:MET:HB3	1:A:777:LEU:HB2	1.89	0.54
1:B:699:PRO:O	1:B:699:PRO:HG2	2.06	0.54
1:B:944:TYR:O	1:B:948:VAL:HG23	2.07	0.54
1:A:795:PHE:CE1	1:A:847:THR:HA	2.43	0.53
1:B:969:SER:O	1:B:973:ARG:HG2	2.09	0.53
1:A:791:GLN:CB	1:A:1013:ALA:HB2	2.39	0.53
1:B:726:VAL:HG12	1:B:727:TYR:N	2.23	0.53
1:B:898:TRP:CD1	1:B:898:TRP:C	2.81	0.53

Continued on next page...

Continued from previous page...

Atom-1	Atom-2	Interatomic distance (Å)	Clash overlap (Å)
1:A:903:THR:O	1:A:906:GLU:HB2	2.09	0.53
1:A:723:PHE:CB	1:A:748:ARG:CB	2.86	0.52
1:B:858:ARG:HB3	1:B:860:LYS:HG3	1.90	0.52
1:B:860:LYS:CE	1:B:891:TYR:CE2	2.91	0.52
1:A:723:PHE:HD1	1:A:723:PHE:O	1.93	0.52
1:A:1011:VAL:CG1	1:A:1015:GLU:CG	2.79	0.52
1:A:718:LEU:CD2	2:A:1101:YUN:CAO	2.87	0.52
1:B:887:LEU:HB3	1:B:888:HIS:CE1	2.44	0.52
1:A:844:LEU:HD11	1:A:854:THR:HG21	1.91	0.52
1:B:767:ALA:HB2	1:B:777:LEU:HD23	1.91	0.52
1:B:1012:ASP:CB	1:B:1015:GLU:HG3	2.31	0.52
1:B:829:GLU:HG3	1:B:893:HIS:CD2	2.45	0.52
1:B:923:ILE:HD13	1:B:926:ILE:HD12	1.92	0.52
1:A:753:PRO:O	1:A:754:LYS:C	2.48	0.52
1:A:944:TYR:O	1:A:948:VAL:HG23	2.10	0.52
1:B:856:PHE:CB	1:B:859:ALA:HB2	2.40	0.52
1:B:766:MET:HB3	1:B:777:LEU:HB2	1.91	0.51
1:A:702:ALA:O	1:B:941:ILE:HB	2.11	0.51
1:A:782:LEU:O	1:B:930:GLY:HA2	2.10	0.51
1:B:858:ARG:HD2	1:B:860:LYS:NZ	2.25	0.51
1:B:1012:ASP:HB3	1:B:1015:GLU:H	1.75	0.51
1:A:837:ASP:OD2	1:A:858:ARG:HD3	2.11	0.51
1:A:724:GLY:C	1:A:725:THR:HG23	2.30	0.51
1:A:767:ALA:HB2	1:A:777:LEU:HD23	1.93	0.51
1:B:740:ILE:HG21	1:B:1013:ALA:HB2	1.93	0.51
1:B:835:HIS:NE2	1:B:855:ASP:O	2.43	0.51
1:B:833:LEU:HD23	1:B:833:LEU:C	2.30	0.51
1:A:860:LYS:NZ	1:A:860:LYS:HB2	2.27	0.50
1:B:833:LEU:HA	1:B:861:LEU:HD12	1.93	0.50
1:B:860:LYS:HD3	1:B:891:TYR:HD2	1.77	0.50
1:A:782:LEU:HD21	1:B:952:MET:CE	2.41	0.50
1:B:984:ASP:OD1	1:B:984:ASP:O	2.29	0.50
1:B:1012:ASP:HB2	1:B:1015:GLU:HB2	1.93	0.50
1:A:736:GLU:OE2	1:A:1016:TYR:OH	2.29	0.50
1:B:700:ASN:OD1	1:B:700:ASN:O	2.29	0.50
1:B:701:GLN:O	1:B:701:GLN:OE1	2.30	0.50
1:A:1012:ASP:OD1	1:A:1014:ASP:OD2	2.30	0.50
1:B:829:GLU:HG3	1:B:893:HIS:CG	2.46	0.50
1:B:860:LYS:HE3	1:B:891:TYR:CE2	2.39	0.50
1:A:856:PHE:O	1:A:859:ALA:CB	2.60	0.50
1:A:1011:VAL:HG11	1:A:1015:GLU:CB	2.42	0.50

Continued on next page...

Continued from previous page...

Atom-1	Atom-2	Interatomic distance (Å)	Clash overlap (Å)
1:B:775:CYS:SG	1:B:854:THR:HB	2.52	0.50
1:A:698:ALA:HB1	1:A:699:PRO:HD2	1.93	0.49
1:A:1008:ASP:HB2	1:A:1010:VAL:HG23	1.93	0.49
1:B:1012:ASP:O	1:B:1015:GLU:HB2	2.11	0.49
1:A:736:GLU:OE1	1:A:1016:TYR:OH	2.30	0.49
1:B:847:THR:O	1:B:849:GLN:N	2.46	0.49
1:A:829:GLU:HG3	1:A:893:HIS:CD2	2.48	0.49
1:A:986:ARG:O	1:A:987:MET:O	2.30	0.49
1:B:855:ASP:OD2	1:B:856:PHE:N	2.45	0.49
1:A:778:LEU:HG	1:A:790:MET:HA	1.93	0.49
1:A:736:GLU:CD	1:A:1016:TYR:OH	2.49	0.49
1:A:887:LEU:HB3	1:A:888:HIS:CE1	2.48	0.49
1:B:796:GLY:O	1:B:845:VAL:HG23	2.12	0.49
1:A:769:VAL:HB	1:A:827:TYR:HE2	1.78	0.49
1:A:847:THR:C	1:A:849:GLN:H	2.16	0.48
1:B:847:THR:C	1:B:849:GLN:N	2.66	0.48
1:A:714:LYS:HD3	1:A:727:TYR:HD2	1.79	0.48
1:B:728:LYS:HE2	1:B:792:LEU:HD21	1.95	0.48
1:B:1012:ASP:HB2	1:B:1015:GLU:CB	2.43	0.48
1:B:908:MET:HG2	1:B:939:CYS:SG	2.53	0.48
1:A:719:GLY:O	1:A:720:SER:OG	2.30	0.48
1:A:747:LEU:CB	1:A:759:ILE:HD12	2.43	0.48
1:B:847:THR:C	1:B:849:GLN:H	2.15	0.48
1:B:883:LEU:HD12	1:B:883:LEU:HA	1.68	0.48
1:B:740:ILE:CG2	1:B:1013:ALA:HB2	2.44	0.47
1:A:847:THR:C	1:A:849:GLN:N	2.67	0.47
1:B:704:LEU:HD12	1:B:704:LEU:HA	1.16	0.47
1:B:799:LEU:O	1:B:802:VAL:HG22	2.15	0.47
1:A:969:SER:O	1:A:973:ARG:HG2	2.13	0.47
1:B:778:LEU:HD11	1:B:791:GLN:CG	2.44	0.47
1:A:797:CYS:HB2	1:A:800:ASP:OD1	2.14	0.47
1:A:837:ASP:HB2	1:A:858:ARG:CG	2.43	0.47
1:A:856:PHE:C	1:A:858:ARG:N	2.57	0.47
1:B:700:ASN:O	1:B:700:ASN:CG	2.52	0.47
1:B:797:CYS:HB2	1:B:800:ASP:OD1	2.13	0.47
1:A:776:ARG:O	1:A:776:ARG:HG3	2.15	0.47
1:B:856:PHE:O	1:B:857:GLY:C	2.52	0.47
1:B:985:GLU:OE1	1:B:985:GLU:O	2.33	0.47
1:A:1007:MET:O	1:A:1008:ASP:C	2.54	0.47
1:A:827:TYR:O	1:A:831:ARG:HG3	2.15	0.46
1:A:853:ILE:CG2	1:A:854:THR:N	2.78	0.46

Continued on next page...

Continued from previous page...

Atom-1	Atom-2	Interatomic distance (Å)	Clash overlap (Å)
1:A:789:ILE:HG22	1:A:790:MET:N	2.30	0.46
1:B:922:GLU:O	1:B:926:ILE:HG13	2.15	0.46
1:A:898:TRP:CD1	1:A:898:TRP:O	2.68	0.46
1:B:844:LEU:HD11	1:B:854:THR:HG21	1.97	0.46
1:A:756:ASN:HA	1:A:759:ILE:HG22	1.96	0.46
1:A:791:GLN:HB2	1:A:1013:ALA:CB	2.45	0.46
1:A:846:LYS:HD3	1:A:850:HIS:ND1	2.30	0.46
1:B:752:SER:HB2	1:B:753:PRO:CD	2.45	0.46
1:A:799:LEU:O	1:A:802:VAL:HG22	2.15	0.46
1:A:854:THR:O	1:A:854:THR:CG2	2.48	0.46
1:A:971:MET:HA	1:A:978:TYR:CE1	2.50	0.46
1:A:961:PHE:O	1:A:965:ILE:HG13	2.16	0.46
1:A:738:VAL:HG23	1:A:1011:VAL:HG23	1.98	0.46
1:A:986:ARG:O	1:A:987:MET:C	2.54	0.46
1:A:837:ASP:HB2	1:A:858:ARG:HG2	1.98	0.45
1:A:1014:ASP:O	1:A:1015:GLU:C	2.54	0.45
1:A:861:LEU:O	1:A:862:LEU:CB	2.65	0.45
1:B:769:VAL:HG23	1:B:769:VAL:O	2.16	0.45
1:B:985:GLU:OE1	1:B:985:GLU:CA	2.63	0.45
1:A:885:SER:HB3	1:A:891:TYR:HE1	1.81	0.45
1:A:984:ASP:HB3	1:A:985:GLU:OE1	2.16	0.45
1:B:854:THR:O	1:B:854:THR:OG1	2.26	0.45
1:B:860:LYS:HG3	1:B:860:LYS:H	1.55	0.45
1:A:829:GLU:HG3	1:A:893:HIS:CG	2.52	0.45
1:A:736:GLU:O	1:A:738:VAL:N	2.50	0.44
1:A:760:LEU:HD23	1:A:760:LEU:HA	1.79	0.44
1:B:858:ARG:HB3	1:B:860:LYS:CG	2.48	0.44
1:A:789:ILE:HD12	1:A:789:ILE:N	2.32	0.44
1:A:931:GLU:C	1:A:932:ARG:HG2	2.37	0.44
1:B:742:VAL:O	1:B:792:LEU:HB2	2.17	0.44
1:B:1013:ALA:O	1:B:1016:TYR:N	2.49	0.44
1:A:718:LEU:HD21	2:A:1101:YUN:H11	2.00	0.44
1:A:986:ARG:H	1:A:986:ARG:HG3	1.40	0.44
1:A:761:ASP:O	1:A:765:VAL:HG23	2.17	0.44
1:A:923:ILE:HD13	1:A:926:ILE:CD1	2.47	0.44
1:A:701:GLN:CD	1:B:980:VAL:HG21	2.38	0.44
1:A:733:PRO:HG2	1:A:1016:TYR:HE2	1.82	0.44
1:A:840:ALA:C	1:A:842:ASN:H	2.21	0.44
1:A:847:THR:O	1:A:849:GLN:N	2.51	0.44
1:B:700:ASN:OD1	1:B:700:ASN:C	2.55	0.44
1:A:860:LYS:HE2	1:A:891:TYR:HE2	1.82	0.43

Continued on next page...

Continued from previous page...

Atom-1	Atom-2	Interatomic distance (Å)	Clash overlap (Å)
1:B:739:LYS:O	1:B:1011:VAL:HG22	2.18	0.43
1:A:708:LYS:HD3	1:B:931:GLU:OE2	2.18	0.43
1:A:753:PRO:O	1:A:756:ASN:N	2.51	0.43
1:A:796:GLY:O	1:A:845:VAL:HG23	2.17	0.43
1:B:838:LEU:O	1:B:839:ALA:HB2	2.19	0.43
1:B:816:ASN:O	1:B:820:GLN:HG3	2.18	0.43
1:B:856:PHE:O	1:B:859:ALA:HB2	2.19	0.43
1:A:789:ILE:CG2	1:A:790:MET:N	2.82	0.43
1:B:1012:ASP:CB	1:B:1015:GLU:CG	2.91	0.43
1:A:883:LEU:HD12	1:A:883:LEU:HA	1.72	0.43
1:A:958:ARG:HA	1:A:959:PRO:HD3	1.85	0.43
1:B:898:TRP:CD1	1:B:898:TRP:O	2.72	0.43
1:A:747:LEU:CB	1:A:759:ILE:CD1	2.97	0.42
1:B:726:VAL:CG1	1:B:727:TYR:N	2.83	0.42
1:B:759:ILE:HG23	1:B:760:LEU:N	2.33	0.42
1:B:844:LEU:HD12	1:B:854:THR:HG21	1.99	0.42
1:B:761:ASP:O	1:B:765:VAL:HG23	2.20	0.42
1:A:816:ASN:O	1:A:820:GLN:HG3	2.20	0.42
1:B:812:GLN:NE2	1:B:975:PRO:HG3	2.34	0.42
1:B:793:MET:N	2:B:1101:YUN:H8	2.25	0.42
1:B:931:GLU:O	1:B:932:ARG:HG2	2.19	0.42
1:A:791:GLN:HG3	1:A:1013:ALA:HB2	2.00	0.42
1:A:726:VAL:HG12	1:A:727:TYR:CA	2.50	0.42
1:B:971:MET:HA	1:B:978:TYR:CE1	2.55	0.42
1:B:778:LEU:HG	1:B:790:MET:HA	2.02	0.41
1:B:840:ALA:C	1:B:842:ASN:H	2.23	0.41
1:B:861:LEU:O	1:B:861:LEU:HG	2.19	0.41
1:B:900:TYR:O	1:B:904:VAL:HG23	2.20	0.41
1:B:856:PHE:O	1:B:858:ARG:N	2.53	0.41
1:A:754:LYS:HE2	1:A:758:GLU:OE2	2.20	0.41
1:A:977:ARG:O	1:A:977:ARG:HG2	2.20	0.41
1:B:958:ARG:HA	1:B:959:PRO:HD3	1.89	0.41
1:B:961:PHE:O	1:B:965:ILE:HG13	2.20	0.41
1:A:902:VAL:HG13	1:A:933:LEU:HD11	2.03	0.41
1:A:718:LEU:HA	1:A:718:LEU:HD23	1.51	0.41
1:B:740:ILE:N	1:B:740:ILE:HD12	2.36	0.41
1:B:811:SER:N	1:B:981:ILE:HD11	2.36	0.41
1:B:821:ILE:HG23	1:B:853:ILE:HD11	2.03	0.41
1:B:928:GLU:O	1:B:930:GLY:N	2.53	0.41
1:B:760:LEU:HA	1:B:760:LEU:HD23	1.74	0.41
1:B:856:PHE:O	1:B:858:ARG:C	2.59	0.41

Continued on next page...

Continued from previous page...

Atom-1	Atom-2	Interatomic distance (Å)	Clash overlap (Å)
1:A:700:ASN:O	1:B:940:THR:HB	2.21	0.41
1:B:797:CYS:HA	1:B:844:LEU:HD23	2.01	0.41
1:A:769:VAL:O	1:A:769:VAL:HG23	2.21	0.41
1:A:896:ASP:O	1:A:899:SER:N	2.54	0.41
1:B:718:LEU:HA	1:B:718:LEU:HD23	1.78	0.41
1:B:856:PHE:O	1:B:859:ALA:CB	2.69	0.41
1:B:885:SER:HG	1:B:891:TYR:HD1	1.66	0.41
1:A:1011:VAL:CG1	1:A:1015:GLU:HB2	2.51	0.41
1:B:740:ILE:HA	1:B:741:PRO:HD3	1.94	0.41
1:B:931:GLU:C	1:B:932:ARG:HG2	2.41	0.40
1:A:855:ASP:C	1:A:856:PHE:CD2	2.91	0.40
1:A:878:ILE:HA	1:A:878:ILE:HD13	1.80	0.40
1:B:715:ILE:HG13	1:B:729:GLY:HA2	2.02	0.40
1:A:927:LEU:CD2	1:A:932:ARG:HD3	2.51	0.40
1:A:935:GLN:HA	1:A:936:PRO:HD3	1.87	0.40
1:A:1011:VAL:CG1	1:A:1015:GLU:CB	2.99	0.40
1:A:900:TYR:O	1:A:904:VAL:HG23	2.21	0.40
1:B:805:HIS:ND1	1:B:805:HIS:N	2.70	0.40
1:B:962:ARG:O	1:B:966:ILE:HD13	2.22	0.40

There are no symmetry-related clashes.

5.3 Torsion angles [i](#)

5.3.1 Protein backbone [i](#)

In the following table, the Percentiles column shows the percent Ramachandran outliers of the chain as a percentile score with respect to all X-ray entries followed by that with respect to entries of similar resolution.

The Analysed column shows the number of residues for which the backbone conformation was analysed, and the total number of residues.

Mol	Chain	Analysed	Favoured	Allowed	Outliers	Percentiles	
1	A	283/331 (86%)	261 (92%)	21 (7%)	1 (0%)	34	71
1	B	275/331 (83%)	256 (93%)	19 (7%)	0	100	100
All	All	558/662 (84%)	517 (93%)	40 (7%)	1 (0%)	47	79

All (1) Ramachandran outliers are listed below:

Mol	Chain	Res	Type
1	A	1006	ASP

5.3.2 Protein sidechains [i](#)

In the following table, the Percentiles column shows the percent sidechain outliers of the chain as a percentile score with respect to all X-ray entries followed by that with respect to entries of similar resolution.

The Analysed column shows the number of residues for which the sidechain conformation was analysed, and the total number of residues.

Mol	Chain	Analysed	Rotameric	Outliers	Percentiles	
1	A	245/290 (84%)	217 (89%)	28 (11%)	5	25
1	B	240/290 (83%)	212 (88%)	28 (12%)	5	24
All	All	485/580 (84%)	429 (88%)	56 (12%)	5	25

All (56) residues with a non-rotameric sidechain are listed below:

Mol	Chain	Res	Type
1	A	699	PRO
1	A	714	LYS
1	A	723	PHE
1	A	725	THR
1	A	752	SER
1	A	776	ARG
1	A	783	THR
1	A	784	SER
1	A	785	THR
1	A	806	LYS
1	A	833	LEU
1	A	838	LEU
1	A	841	ARG
1	A	853	ILE
1	A	858	ARG
1	A	877	PRO
1	A	895	SER
1	A	908	MET
1	A	962	ARG
1	A	976	GLN
1	A	981	ILE
1	A	982	GLN
1	A	1005	GLU

Continued on next page...

Continued from previous page...

Mol	Chain	Res	Type
1	A	1006	ASP
1	A	1008	ASP
1	A	1011	VAL
1	A	1015	GLU
1	A	1016	TYR
1	B	699	PRO
1	B	701	GLN
1	B	703	LEU
1	B	705	ARG
1	B	714	LYS
1	B	723	PHE
1	B	776	ARG
1	B	777	LEU
1	B	782	LEU
1	B	783	THR
1	B	784	SER
1	B	785	THR
1	B	800	ASP
1	B	805	HIS
1	B	806	LYS
1	B	860	LYS
1	B	877	PRO
1	B	908	MET
1	B	973	ARG
1	B	976	GLN
1	B	981	ILE
1	B	982	GLN
1	B	985	GLU
1	B	1011	VAL
1	B	1012	ASP
1	B	1014	ASP
1	B	1016	TYR
1	B	1017	LEU

Sometimes sidechains can be flipped to improve hydrogen bonding and reduce clashes. All (11) such sidechains are listed below:

Mol	Chain	Res	Type
1	A	701	GLN
1	A	773	HIS
1	A	808	ASN
1	A	893	HIS
1	A	976	GLN

Continued on next page...

Continued from previous page...

Mol	Chain	Res	Type
1	B	701	GLN
1	B	756	ASN
1	B	773	HIS
1	B	808	ASN
1	B	893	HIS
1	B	976	GLN

5.3.3 RNA [i](#)

There are no RNA molecules in this entry.

5.4 Non-standard residues in protein, DNA, RNA chains [i](#)

There are no non-standard protein/DNA/RNA residues in this entry.

5.5 Carbohydrates [i](#)

There are no monosaccharides in this entry.

5.6 Ligand geometry [i](#)

2 ligands are modelled in this entry.

In the following table, the Counts columns list the number of bonds (or angles) for which Mogul statistics could be retrieved, the number of bonds (or angles) that are observed in the model and the number of bonds (or angles) that are defined in the Chemical Component Dictionary. The Link column lists molecule types, if any, to which the group is linked. The Z score for a bond length (or angle) is the number of standard deviations the observed value is removed from the expected value. A bond length (or angle) with $|Z| > 2$ is considered an outlier worth inspection. RMSZ is the root-mean-square of all Z scores of the bond lengths (or angles).

Mol	Type	Chain	Res	Link	Bond lengths			Bond angles		
					Counts	RMSZ	# Z > 2	Counts	RMSZ	# Z > 2
2	YUN	A	1101	1	25,25,25	1.61	3 (12%)	34,34,34	2.07	9 (26%)
2	YUN	B	1101	1	25,25,25	1.59	3 (12%)	34,34,34	2.09	10 (29%)

In the following table, the Chirals column lists the number of chiral outliers, the number of chiral centers analysed, the number of these observed in the model and the number defined in the Chemical Component Dictionary. Similar counts are reported in the Torsion and Rings columns. '-' means no outliers of that kind were identified.

Mol	Type	Chain	Res	Link	Chirals	Torsions	Rings
2	YUN	A	1101	1	-	0/10/10/10	0/3/3/3
2	YUN	B	1101	1	-	0/10/10/10	0/3/3/3

All (6) bond length outliers are listed below:

Mol	Chain	Res	Type	Atoms	Z	Observed(Å)	Ideal(Å)
2	A	1101	YUN	C6-C5	-4.43	1.39	1.44
2	B	1101	YUN	CAZ-NAS	-4.32	1.32	1.41
2	A	1101	YUN	CAZ-NAS	-4.23	1.33	1.41
2	B	1101	YUN	C6-C5	-4.04	1.39	1.44
2	B	1101	YUN	CAY-NAT	-3.26	1.33	1.40
2	A	1101	YUN	CAY-NAT	-3.09	1.33	1.40

All (19) bond angle outliers are listed below:

Mol	Chain	Res	Type	Atoms	Z	Observed(°)	Ideal(°)
2	B	1101	YUN	C2-N1-C6	5.77	121.54	116.59
2	A	1101	YUN	C2-N1-C6	5.59	121.38	116.59
2	A	1101	YUN	N3-C2-N1	-4.73	121.28	128.68
2	B	1101	YUN	N3-C2-N1	-4.70	121.34	128.68
2	A	1101	YUN	CAM-C5-C6	-4.01	121.27	124.88
2	A	1101	YUN	C2-N3-C4	3.96	120.85	115.40
2	B	1101	YUN	CAM-C5-C6	-3.91	121.35	124.88
2	B	1101	YUN	C2-N3-C4	3.82	120.66	115.40
2	A	1101	YUN	C6-C5-C4	3.62	118.16	115.88
2	A	1101	YUN	CAZ-NAS-CAW	-3.57	121.26	127.50
2	B	1101	YUN	C6-C5-C4	3.55	118.12	115.88
2	B	1101	YUN	CAZ-NAS-CAW	-3.36	121.62	127.50
2	B	1101	YUN	C5-C6-N1	-3.19	118.72	121.35
2	A	1101	YUN	C5-C4-N3	-3.18	119.44	122.83
2	B	1101	YUN	C5-C4-N3	-3.06	119.57	122.83
2	A	1101	YUN	C5-C6-N1	-3.05	118.84	121.35
2	B	1101	YUN	CAY-CAL-CAX	2.25	120.96	118.62
2	B	1101	YUN	CAY-NAT-C6	-2.22	122.48	128.26
2	A	1101	YUN	CAY-NAT-C6	-2.14	122.68	128.26

There are no chirality outliers.

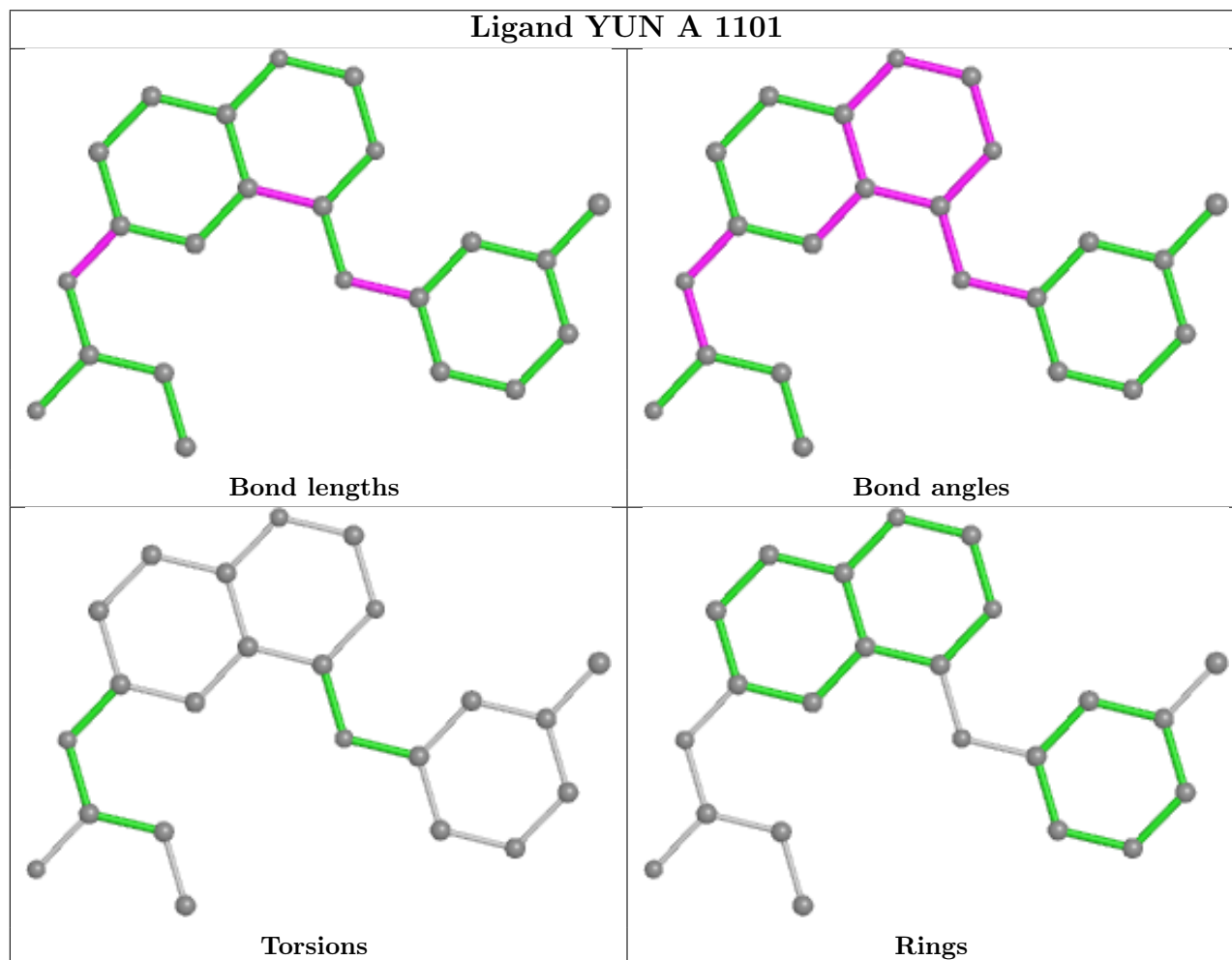
There are no torsion outliers.

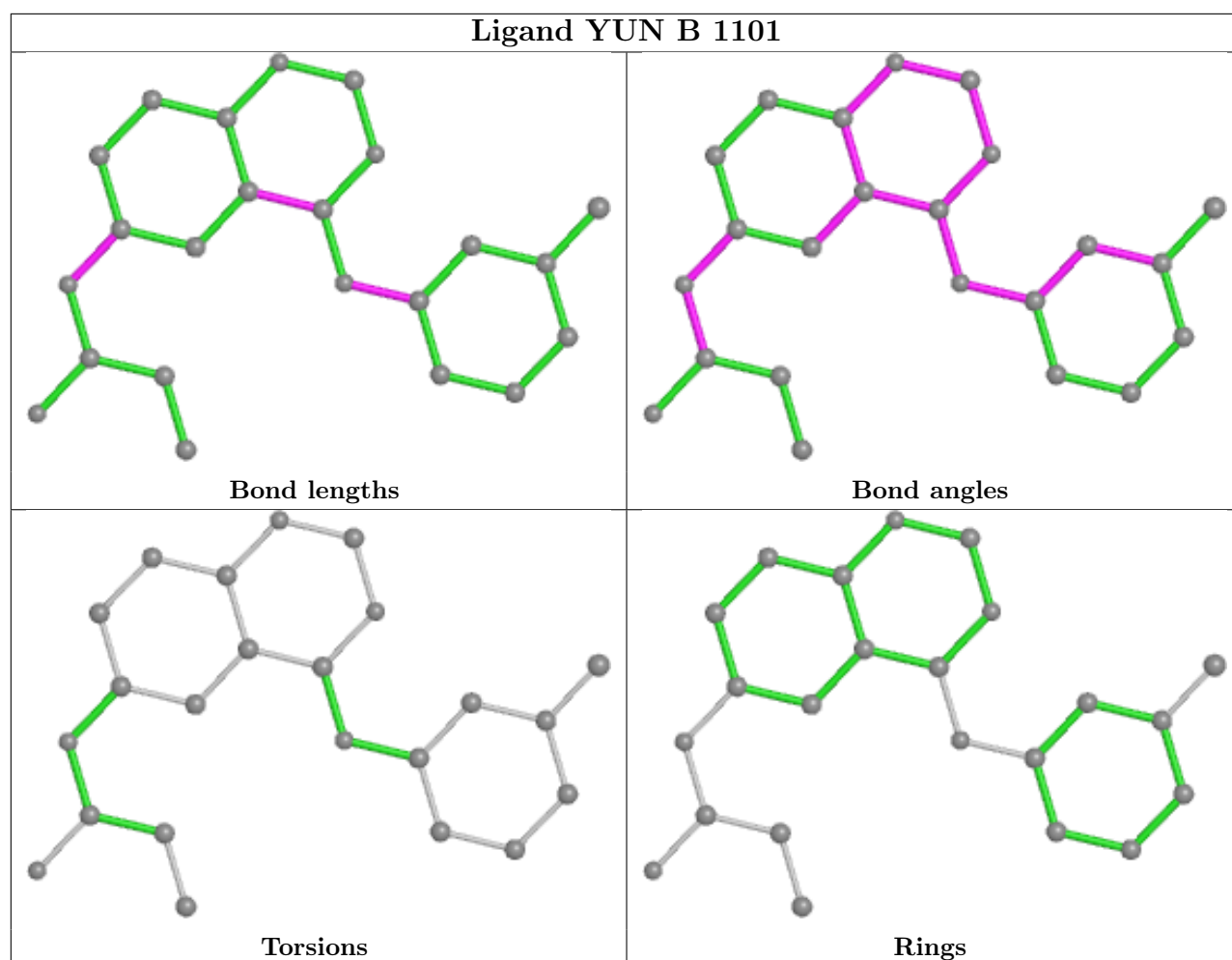
There are no ring outliers.

2 monomers are involved in 19 short contacts:

Mol	Chain	Res	Type	Clashes	Symm-Clashes
2	A	1101	YUN	12	0
2	B	1101	YUN	7	0

The following is a two-dimensional graphical depiction of Mogul quality analysis of bond lengths, bond angles, torsion angles, and ring geometry for all instances of the Ligand of Interest. In addition, ligands with molecular weight > 250 and outliers as shown on the validation Tables will also be included. For torsion angles, if less than 5% of the Mogul distribution of torsion angles is within 10 degrees of the torsion angle in question, then that torsion angle is considered an outlier. Any bond that is central to one or more torsion angles identified as an outlier by Mogul will be highlighted in the graph. For rings, the root-mean-square deviation (RMSD) between the ring in question and similar rings identified by Mogul is calculated over all ring torsion angles. If the average RMSD is greater than 60 degrees and the minimal RMSD between the ring in question and any Mogul-identified rings is also greater than 60 degrees, then that ring is considered an outlier. The outliers are highlighted in purple. The color gray indicates Mogul did not find sufficient equivalents in the CSD to analyse the geometry.





5.7 Other polymers [i](#)

There are no such residues in this entry.

5.8 Polymer linkage issues [i](#)

There are no chain breaks in this entry.

6 Fit of model and data [i](#)

6.1 Protein, DNA and RNA chains [i](#)

In the following table, the column labelled ‘#RSRZ > 2’ contains the number (and percentage) of RSRZ outliers, followed by percent RSRZ outliers for the chain as percentile scores relative to all X-ray entries and entries of similar resolution. The OWAB column contains the minimum, median, 95th percentile and maximum values of the occupancy-weighted average B-factor per residue. The column labelled ‘Q < 0.9’ lists the number of (and percentage) of residues with an average occupancy less than 0.9.

Mol	Chain	Analysed	<RSRZ>	#RSRZ>2	OWAB(Å ²)	Q<0.9
1	A	291/331 (87%)	0.08	3 (1%) 82 74	192, 256, 310, 335	1 (0%)
1	B	281/331 (84%)	0.04	6 (2%) 63 54	201, 255, 301, 327	1 (0%)
All	All	572/662 (86%)	0.06	9 (1%) 72 62	192, 256, 307, 335	2 (0%)

All (9) RSRZ outliers are listed below:

Mol	Chain	Res	Type	RSRZ
1	A	704	LEU	3.3
1	B	915	TYR	2.7
1	B	879	LYS	2.6
1	B	880	TRP	2.5
1	A	854	THR	2.4
1	B	817	TRP	2.4
1	B	943	VAL	2.1
1	B	979	LEU	2.1
1	A	809	ILE	2.0

6.2 Non-standard residues in protein, DNA, RNA chains [i](#)

There are no non-standard protein/DNA/RNA residues in this entry.

6.3 Carbohydrates [i](#)

There are no monosaccharides in this entry.

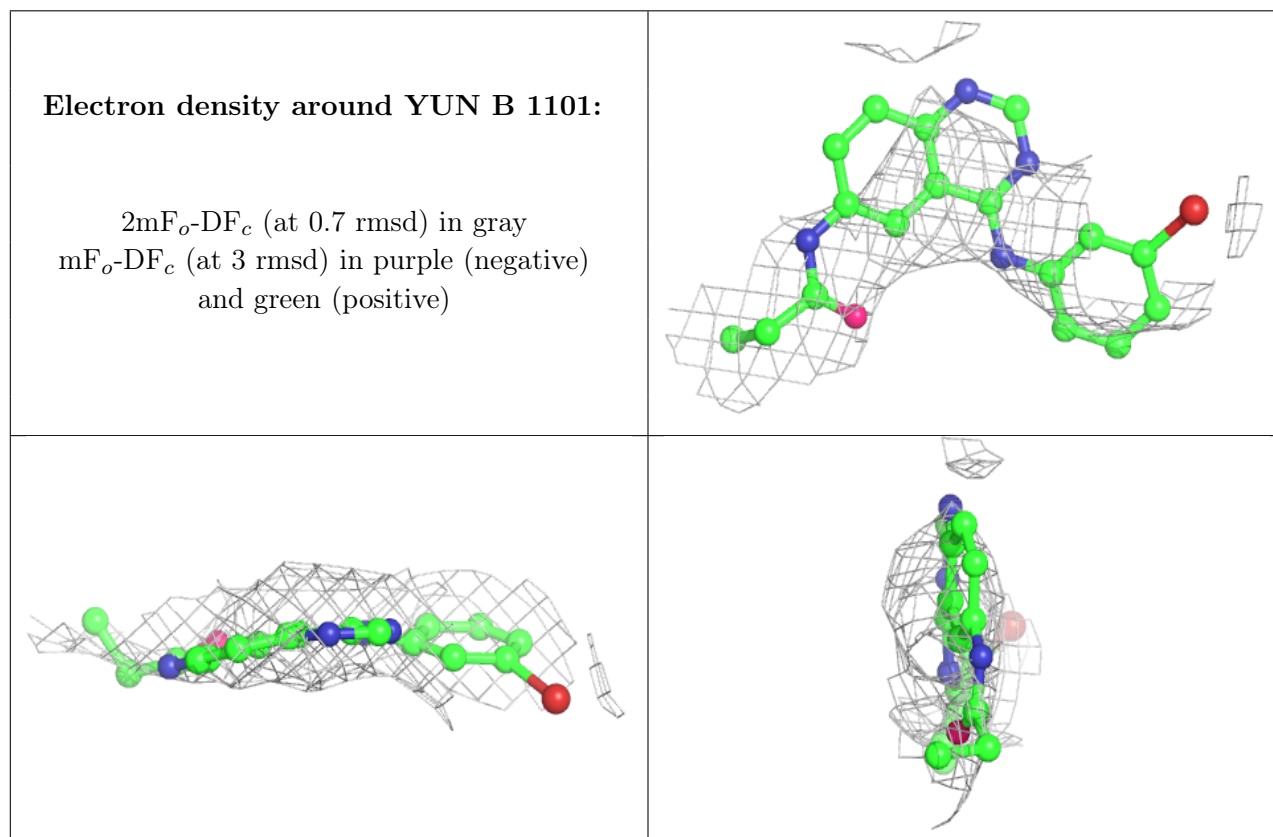
6.4 Ligands [i](#)

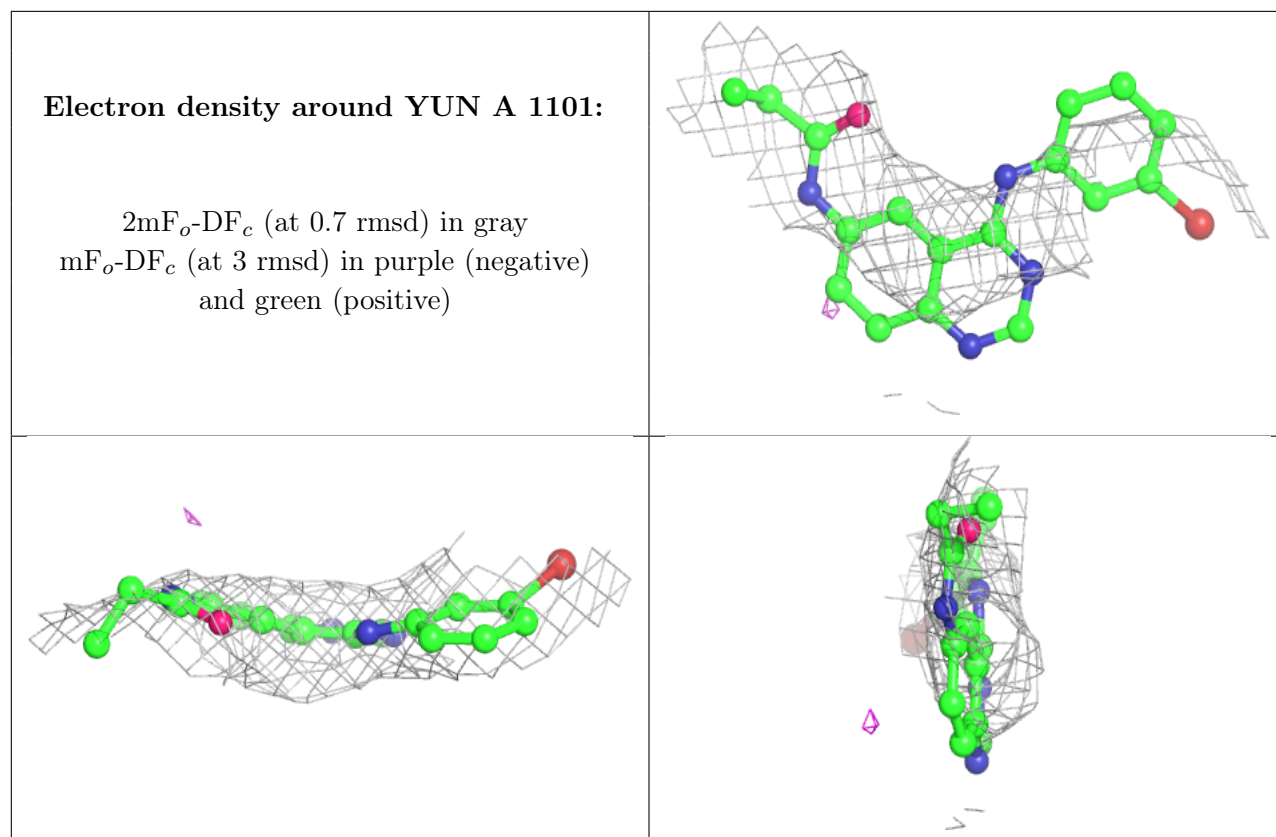
In the following table, the Atoms column lists the number of modelled atoms in the group and the number defined in the chemical component dictionary. The B-factors column lists the minimum,

median, 95th percentile and maximum values of B factors of atoms in the group. The column labelled 'Q<0.9' lists the number of atoms with occupancy less than 0.9.

Mol	Type	Chain	Res	Atoms	RSCC	RSR	B-factors(Å ²)	Q<0.9
2	YUN	B	1101	23/23	0.75	0.44	211,256,286,297	0
2	YUN	A	1101	23/23	0.83	0.49	208,256,288,291	0

The following is a graphical depiction of the model fit to experimental electron density of all instances of the Ligand of Interest. In addition, ligands with molecular weight > 250 and outliers as shown on the geometry validation Tables will also be included. Each fit is shown from different orientation to approximate a three-dimensional view.





6.5 Other polymers [i](#)

There are no such residues in this entry.