



Full wwPDB X-ray Structure Validation Report ⓘ

Aug 28, 2023 – 10:44 AM EDT

PDB ID : 3LMI
Title : Crystal Structure of the Inactive Alpha-kinase Domain of Myosin Heavy Chain Kinase A (D766A) complex with ATP
Authors : Ye, Q.; Jia, Z.
Deposited on : 2010-01-30
Resolution : 2.20 Å (reported)

This is a Full wwPDB X-ray Structure Validation Report for a publicly released PDB entry.

We welcome your comments at validation@mail.wwpdb.org

A user guide is available at

<https://www.wwpdb.org/validation/2017/XrayValidationReportHelp>

with specific help available everywhere you see the ⓘ symbol.

The types of validation reports are described at

<http://www.wwpdb.org/validation/2017/FAQs#types>.

The following versions of software and data (see [references ⓘ](#)) were used in the production of this report:

MolProbity : 4.02b-467
Mogul : 1.8.5 (274361), CSD as541be (2020)
Xtriage (Phenix) : 1.13
EDS : 2.35
buster-report : 1.1.7 (2018)
Percentile statistics : 20191225.v01 (using entries in the PDB archive December 25th 2019)
Refmac : 5.8.0158
CCP4 : 7.0.044 (Gargrove)
Ideal geometry (proteins) : Engh & Huber (2001)
Ideal geometry (DNA, RNA) : Parkinson et al. (1996)
Validation Pipeline (wwPDB-VP) : 2.35

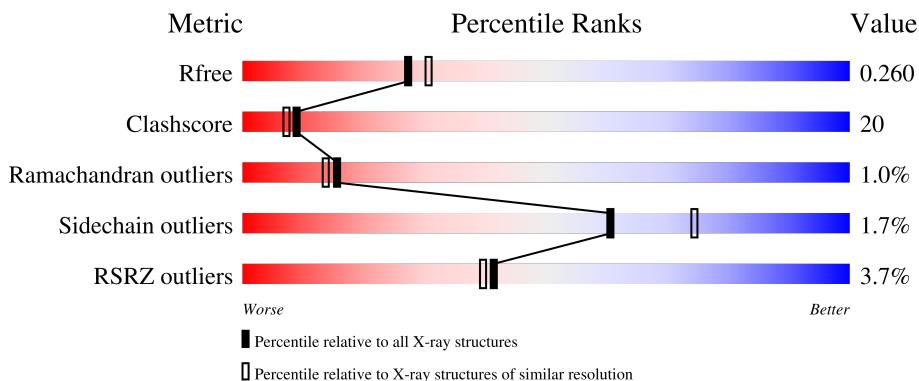
1 Overall quality at a glance

The following experimental techniques were used to determine the structure:

X-RAY DIFFRACTION

The reported resolution of this entry is 2.20 Å.

Percentile scores (ranging between 0-100) for global validation metrics of the entry are shown in the following graphic. The table shows the number of entries on which the scores are based.



Metric	Whole archive (#Entries)	Similar resolution (#Entries, resolution range(Å))
R_{free}	130704	4898 (2.20-2.20)
Clashscore	141614	5594 (2.20-2.20)
Ramachandran outliers	138981	5503 (2.20-2.20)
Sidechain outliers	138945	5504 (2.20-2.20)
RSRZ outliers	127900	4800 (2.20-2.20)

The table below summarises the geometric issues observed across the polymeric chains and their fit to the electron density. The red, orange, yellow and green segments of the lower bar indicate the fraction of residues that contain outliers for ≥ 3 , 2, 1 and 0 types of geometric quality criteria respectively. A grey segment represents the fraction of residues that are not modelled. The numeric value for each fraction is indicated below the corresponding segment, with a dot representing fractions $\leq 5\%$. The upper red bar (where present) indicates the fraction of residues that have poor fit to the electron density. The numeric value is given above the bar.

Mol	Chain	Length	Quality of chain
1	A	307	 2% 65% 15% 18%
1	B	307	 3% 62% 19% 17%
1	C	307	 3% 62% 18% 19%
1	D	307	 5% 64% 18% 18%

2 Entry composition [i](#)

There are 6 unique types of molecules in this entry. The entry contains 8689 atoms, of which 0 are hydrogens and 0 are deuteriums.

In the tables below, the ZeroOcc column contains the number of atoms modelled with zero occupancy, the AltConf column contains the number of residues with at least one atom in alternate conformation and the Trace column contains the number of residues modelled with at most 2 atoms.

- Molecule 1 is a protein called Myosin heavy chain kinase A.

Mol	Chain	Residues	Atoms					ZeroOcc	AltConf	Trace
			Total	C	N	O	S			
1	A	246	Total 1953	C 1256	N 329	O 356	S 12	0	0	0
1	B	254	Total 2012	C 1291	N 338	O 371	S 12	0	0	0
1	C	250	Total 1986	C 1276	N 334	O 364	S 12	0	0	0
1	D	253	Total 2005	C 1287	N 335	O 371	S 12	0	0	0

There are 72 discrepancies between the modelled and reference sequences:

Chain	Residue	Modelled	Actual	Comment	Reference
A	535	MET	-	expression tag	UNP P42527
A	536	GLY	-	expression tag	UNP P42527
A	537	GLY	-	expression tag	UNP P42527
A	538	HIS	-	expression tag	UNP P42527
A	539	HIS	-	expression tag	UNP P42527
A	540	HIS	-	expression tag	UNP P42527
A	541	HIS	-	expression tag	UNP P42527
A	542	HIS	-	expression tag	UNP P42527
A	543	HIS	-	expression tag	UNP P42527
A	544	GLY	-	expression tag	UNP P42527
A	545	GLU	-	expression tag	UNP P42527
A	546	ASN	-	expression tag	UNP P42527
A	547	LEU	-	expression tag	UNP P42527
A	548	TYR	-	expression tag	UNP P42527
A	549	PHE	-	expression tag	UNP P42527
A	550	GLN	-	expression tag	UNP P42527
A	551	GLY	-	expression tag	UNP P42527
A	766	ALA	ASP	engineered mutation	UNP P42527
B	535	MET	-	expression tag	UNP P42527
B	536	GLY	-	expression tag	UNP P42527
B	537	GLY	-	expression tag	UNP P42527

Continued on next page...

Continued from previous page...

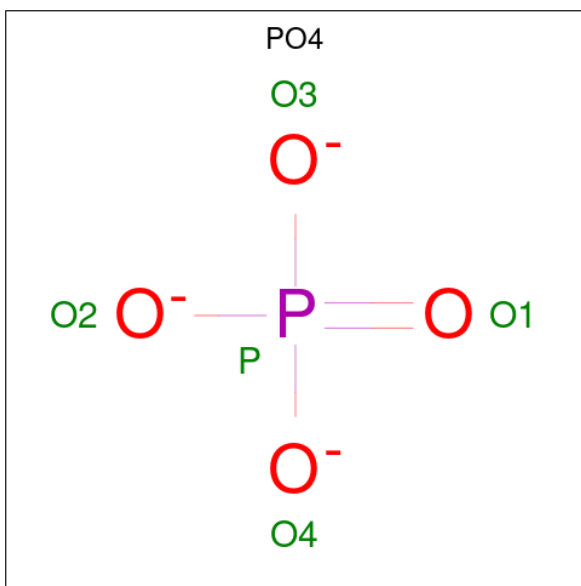
Chain	Residue	Modelled	Actual	Comment	Reference
B	538	HIS	-	expression tag	UNP P42527
B	539	HIS	-	expression tag	UNP P42527
B	540	HIS	-	expression tag	UNP P42527
B	541	HIS	-	expression tag	UNP P42527
B	542	HIS	-	expression tag	UNP P42527
B	543	HIS	-	expression tag	UNP P42527
B	544	GLY	-	expression tag	UNP P42527
B	545	GLU	-	expression tag	UNP P42527
B	546	ASN	-	expression tag	UNP P42527
B	547	LEU	-	expression tag	UNP P42527
B	548	TYR	-	expression tag	UNP P42527
B	549	PHE	-	expression tag	UNP P42527
B	550	GLN	-	expression tag	UNP P42527
B	551	GLY	-	expression tag	UNP P42527
B	766	ALA	ASP	engineered mutation	UNP P42527
C	535	MET	-	expression tag	UNP P42527
C	536	GLY	-	expression tag	UNP P42527
C	537	GLY	-	expression tag	UNP P42527
C	538	HIS	-	expression tag	UNP P42527
C	539	HIS	-	expression tag	UNP P42527
C	540	HIS	-	expression tag	UNP P42527
C	541	HIS	-	expression tag	UNP P42527
C	542	HIS	-	expression tag	UNP P42527
C	543	HIS	-	expression tag	UNP P42527
C	544	GLY	-	expression tag	UNP P42527
C	545	GLU	-	expression tag	UNP P42527
C	546	ASN	-	expression tag	UNP P42527
C	547	LEU	-	expression tag	UNP P42527
C	548	TYR	-	expression tag	UNP P42527
C	549	PHE	-	expression tag	UNP P42527
C	550	GLN	-	expression tag	UNP P42527
C	551	GLY	-	expression tag	UNP P42527
C	766	ALA	ASP	engineered mutation	UNP P42527
D	535	MET	-	expression tag	UNP P42527
D	536	GLY	-	expression tag	UNP P42527
D	537	GLY	-	expression tag	UNP P42527
D	538	HIS	-	expression tag	UNP P42527
D	539	HIS	-	expression tag	UNP P42527
D	540	HIS	-	expression tag	UNP P42527
D	541	HIS	-	expression tag	UNP P42527
D	542	HIS	-	expression tag	UNP P42527
D	543	HIS	-	expression tag	UNP P42527

Continued on next page...

Continued from previous page...

Chain	Residue	Modelled	Actual	Comment	Reference
D	544	GLY	-	expression tag	UNP P42527
D	545	GLU	-	expression tag	UNP P42527
D	546	ASN	-	expression tag	UNP P42527
D	547	LEU	-	expression tag	UNP P42527
D	548	TYR	-	expression tag	UNP P42527
D	549	PHE	-	expression tag	UNP P42527
D	550	GLN	-	expression tag	UNP P42527
D	551	GLY	-	expression tag	UNP P42527
D	766	ALA	ASP	engineered mutation	UNP P42527

- Molecule 2 is PHOSPHATE ION (three-letter code: PO4) (formula: O₄P).



Mol	Chain	Residues	Atoms			ZeroOcc	AltConf
2	A	1	Total	O	P	0	0
			5	4	1		
2	B	1	Total	O	P	0	0
			5	4	1		
2	B	1	Total	O	P	0	0
			5	4	1		
2	C	1	Total	O	P	0	0
			5	4	1		
2	D	1	Total	O	P	0	0
			5	4	1		
2	D	1	Total	O	P	0	0
			5	4	1		

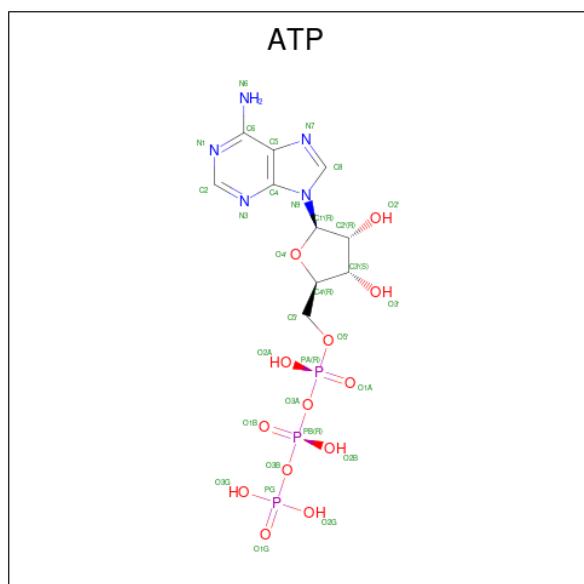
- Molecule 3 is ZINC ION (three-letter code: ZN) (formula: Zn).

Mol	Chain	Residues	Atoms	ZeroOcc	AltConf
3	A	1	Total Zn 1 1	0	0
3	B	1	Total Zn 1 1	0	0
3	C	1	Total Zn 1 1	0	0
3	D	1	Total Zn 1 1	0	0

- Molecule 4 is MAGNESIUM ION (three-letter code: MG) (formula: Mg).

Mol	Chain	Residues	Atoms	ZeroOcc	AltConf
4	A	1	Total Mg 1 1	0	0
4	B	1	Total Mg 1 1	0	0
4	C	1	Total Mg 1 1	0	0
4	D	1	Total Mg 1 1	0	0

- Molecule 5 is ADENOSINE-5'-TRIPHOSPHATE (three-letter code: ATP) (formula: C₁₀H₁₆N₅O₁₃P₃).



Mol	Chain	Residues	Atoms	ZeroOcc	AltConf
5	A	1	Total C N O P 31 10 5 13 3	0	0

Continued on next page...

Continued from previous page...

Mol	Chain	Residues	Atoms				ZeroOcc	AltConf	
5	B	1	Total	C	N	O	P	0	0
			31	10	5	13	3		
5	C	1	Total	C	N	O	P	0	0
			31	10	5	13	3		
5	D	1	Total	C	N	O	P	0	0
			31	10	5	13	3		

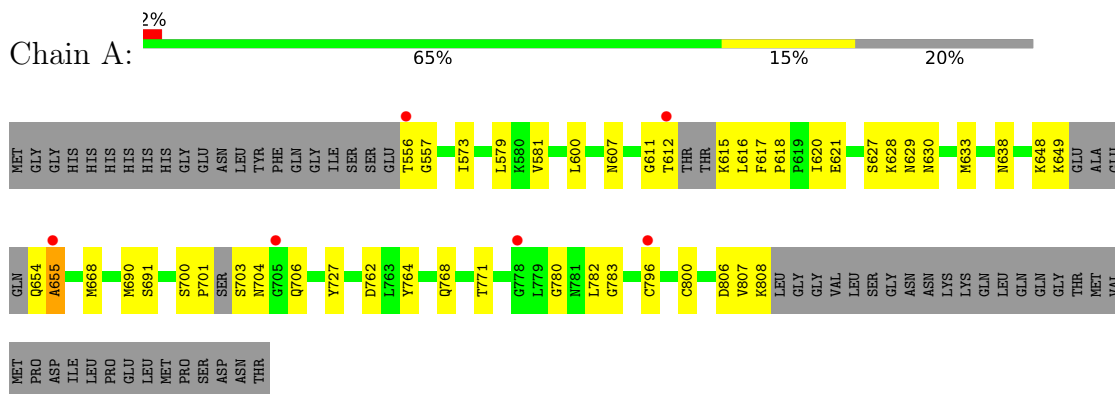
- Molecule 6 is water.

Mol	Chain	Residues	Atoms		ZeroOcc	AltConf
6	A	130	Total	O	0	0
			130	130		
6	B	153	Total	O	0	0
			153	153		
6	C	138	Total	O	0	0
			138	138		
6	D	150	Total	O	0	0
			150	150		

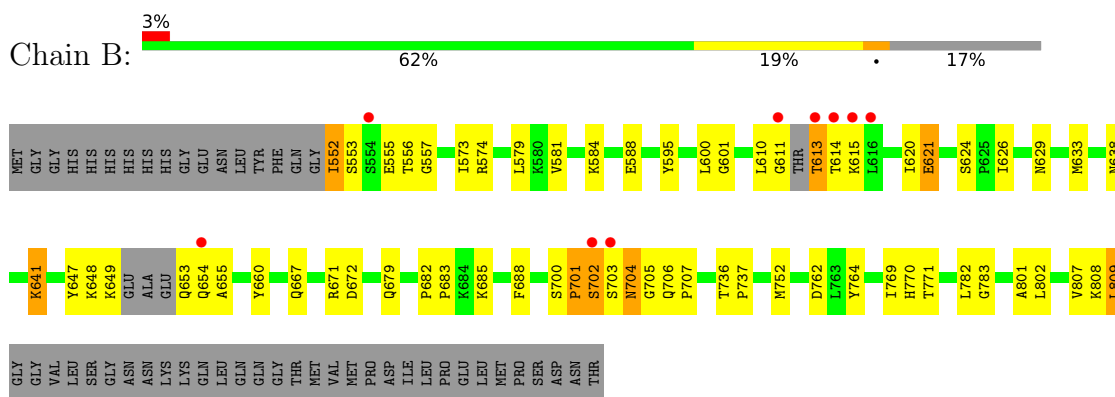
3 Residue-property plots [i](#)

These plots are drawn for all protein, RNA, DNA and oligosaccharide chains in the entry. The first graphic for a chain summarises the proportions of the various outlier classes displayed in the second graphic. The second graphic shows the sequence view annotated by issues in geometry and electron density. Residues are color-coded according to the number of geometric quality criteria for which they contain at least one outlier: green = 0, yellow = 1, orange = 2 and red = 3 or more. A red dot above a residue indicates a poor fit to the electron density ($RSRZ > 2$). Stretches of 2 or more consecutive residues without any outlier are shown as a green connector. Residues present in the sample, but not in the model, are shown in grey.

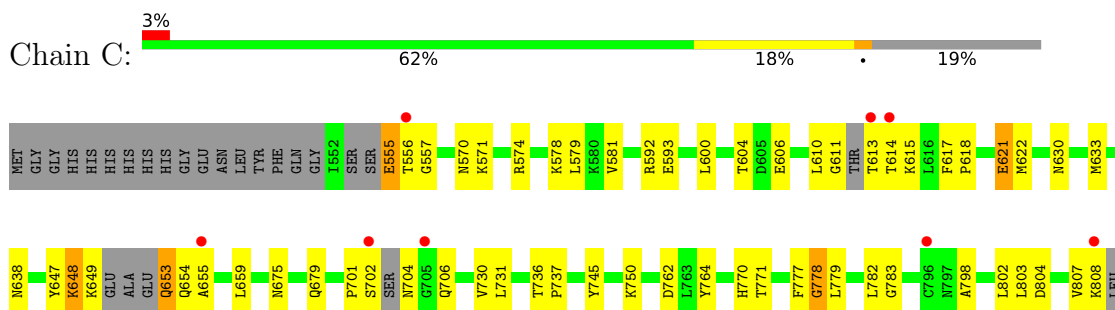
• Molecule 1: Myosin heavy chain kinase A



• Molecule 1: Myosin heavy chain kinase A



• Molecule 1: Myosin heavy chain kinase A



GLY
GLY
VAL
LEU
SER
GLY
ASN
ASN
LYS
LYS
GLN
LEU
LEU
GLN
GLN
GLY
THR
MET
VAL
MET
MET
PRO
ASP
ILE
LEU
LEU
PRO
GLU
LEU
MET
PRO
SER
SER
ASP
ASN
THR

● Molecule 1: Myosin heavy chain kinase A

Chain D: 

MET
GLY
GLY
HIS
HIS
HIS
HIS
HIS
GLY
GLU
ASN
LEU
TYR
PHE
GLN
GLN
GLY
I552
S653
S584
E555
I573
G589
Y595
L600
L610
G611
T612
T613
T614
K615
L616
F617
I620
E621
S624
K628
E631
A632
M633
K637
K641
Y647
K648
K649
E650
ALA
GLU

GLN
GLN
ALA
S656
L659
K665
M666
Q667
M668
I686
M690
S691
F701
S702
S703
N704
G705
Q706
P707
V717
S725
T736
F737
F740
F743
T744
Y745
E746
L747
K750
Q751
M752
D762
A766
P767
Q768
T769
H770
T771
G780
N781
L782
G783
K808
L809

GLY
GLY
VAL
SER
GLY
ASN
ASN
LYS
LYS
GLN
LEU
LEU
GLN
GLN
GLY
THR
MET
VAL
MET
MET
PRO
ASP
ILE
LEU
LEU
PRO
GLU
LEU
MET
PRO
SER
SER
ASP
ASN
THR

4 Data and refinement statistics

Property	Value	Source
Space group	P 41	Depositor
Cell constants a, b, c, α , β , γ	81.19Å 81.19Å 187.56Å 90.00° 90.00° 90.00°	Depositor
Resolution (Å)	29.17 – 2.20 29.17 – 2.20	Depositor EDS
% Data completeness (in resolution range)	92.2 (29.17-2.20) 92.2 (29.17-2.20)	Depositor EDS
R_{merge}	0.06	Depositor
R_{sym}	(Not available)	Depositor
$\langle I/\sigma(I) \rangle$ ¹	6.24 (at 2.20Å)	Xtrriage
Refinement program	REFMAC 6.1.0	Depositor
R, R_{free}	0.199 , 0.269 0.196 , 0.260	Depositor DCC
R_{free} test set	2863 reflections (5.07%)	wwPDB-VP
Wilson B-factor (Å ²)	20.7	Xtrriage
Anisotropy	0.019	Xtrriage
Bulk solvent k_{sol} (e/Å ³), B_{sol} (Å ²)	0.36 , 33.9	EDS
L-test for twinning ²	$\langle L \rangle = 0.50$, $\langle L^2 \rangle = 0.34$	Xtrriage
Estimated twinning fraction	0.477 for h,-k,-l	Xtrriage
F_o, F_c correlation	0.94	EDS
Total number of atoms	8689	wwPDB-VP
Average B, all atoms (Å ²)	21.0	wwPDB-VP

Xtrriage's analysis on translational NCS is as follows: *The largest off-origin peak in the Patterson function is 11.31% of the height of the origin peak. No significant pseudotranslation is detected.*

¹Intensities estimated from amplitudes.

²Theoretical values of $\langle |L| \rangle$, $\langle L^2 \rangle$ for acentric reflections are 0.5, 0.333 respectively for untwinned datasets, and 0.375, 0.2 for perfectly twinned datasets.

5 Model quality [i](#)

5.1 Standard geometry [i](#)

Bond lengths and bond angles in the following residue types are not validated in this section: PO4, MG, ATP, ZN

The Z score for a bond length (or angle) is the number of standard deviations the observed value is removed from the expected value. A bond length (or angle) with $|Z| > 5$ is considered an outlier worth inspection. RMSZ is the root-mean-square of all Z scores of the bond lengths (or angles).

Mol	Chain	Bond lengths		Bond angles	
		RMSZ	# Z >5	RMSZ	# Z >5
1	A	0.48	0/1994	0.56	0/2687
1	B	0.51	0/2054	0.57	0/2770
1	C	0.48	0/2026	0.55	0/2729
1	D	0.53	0/2048	0.59	0/2764
All	All	0.50	0/8122	0.57	0/10950

There are no bond length outliers.

There are no bond angle outliers.

There are no chirality outliers.

There are no planarity outliers.

5.2 Too-close contacts [i](#)

In the following table, the Non-H and H(model) columns list the number of non-hydrogen atoms and hydrogen atoms in the chain respectively. The H(added) column lists the number of hydrogen atoms added and optimized by MolProbity. The Clashes column lists the number of clashes within the asymmetric unit, whereas Symm-Clashes lists symmetry-related clashes.

Mol	Chain	Non-H	H(model)	H(added)	Clashes	Symm-Clashes
1	A	1953	0	1982	57	1
1	B	2012	0	2040	95	1
1	C	1986	0	2013	103	0
1	D	2005	0	2033	71	0
2	A	5	0	0	0	0
2	B	10	0	0	1	0
2	C	5	0	0	0	0
2	D	10	0	0	1	0
3	A	1	0	0	0	0

Continued on next page...

Continued from previous page...

Mol	Chain	Non-H	H(model)	H(added)	Clashes	Symm-Clashes
3	B	1	0	0	0	0
3	C	1	0	0	0	0
3	D	1	0	0	0	0
4	A	1	0	0	0	0
4	B	1	0	0	0	0
4	C	1	0	0	0	0
4	D	1	0	0	0	0
5	A	31	0	12	0	0
5	B	31	0	12	2	0
5	C	31	0	12	2	0
5	D	31	0	12	3	0
6	A	130	0	0	21	0
6	B	153	0	0	29	0
6	C	138	0	0	12	0
6	D	150	0	0	23	0
All	All	8689	0	8116	330	1

The all-atom clashscore is defined as the number of clashes found per 1000 atoms (including hydrogen atoms). The all-atom clashscore for this structure is 20.

All (330) close contacts within the same asymmetric unit are listed below, sorted by their clash magnitude.

Atom-1	Atom-2	Interatomic distance (Å)	Clash overlap (Å)
1:B:649:LYS:CD	1:B:653:GLN:N	1.76	1.48
1:D:631:GLU:HG3	1:D:690:MET:CE	1.57	1.34
1:B:613:THR:CG2	1:B:614:THR:H	1.37	1.34
1:B:660:TYR:CD1	6:B:344:HOH:O	1.79	1.34
1:B:648:LYS:O	1:B:649:LYS:HG2	1.18	1.29
1:B:629:ASN:HB3	6:B:278:HOH:O	1.38	1.23
1:D:690:MET:SD	6:D:852:HOH:O	1.95	1.21
1:B:584:LYS:HE3	6:B:369:HOH:O	1.36	1.18
1:C:648:LYS:O	1:C:653:GLN:CG	1.92	1.18
1:A:668:MET:SD	6:A:478:HOH:O	2.02	1.17
1:C:633:MET:HE3	6:C:404:HOH:O	1.46	1.16
1:B:649:LYS:HD2	1:B:653:GLN:N	0.82	1.14
1:B:613:THR:CG2	1:B:614:THR:N	2.01	1.13
1:B:648:LYS:O	1:B:649:LYS:CG	1.96	1.11
1:B:707:PRO:HD3	6:B:347:HOH:O	0.95	1.11
1:D:752:MET:HG3	6:D:479:HOH:O	0.94	1.10
1:A:704:ASN:OD1	1:A:706:GLN:HG2	1.51	1.10
1:D:631:GLU:HG3	1:D:690:MET:HE3	1.11	1.09

Continued on next page...

Continued from previous page...

Atom-1	Atom-2	Interatomic distance (Å)	Clash overlap (Å)
1:B:641:LYS:NZ	6:B:262:HOH:O	1.87	1.08
1:B:584:LYS:CE	6:B:369:HOH:O	1.95	1.07
1:B:613:THR:HG22	1:B:614:THR:N	1.65	1.06
1:D:628:LYS:HE2	6:D:491:HOH:O	1.54	1.06
1:C:648:LYS:O	1:C:653:GLN:HG2	1.50	1.06
1:B:633:MET:HG2	6:B:222:HOH:O	1.57	1.04
1:D:620:ILE:CG2	1:D:621:GLU:OE2	2.07	1.03
1:C:802:LEU:CD1	6:C:297:HOH:O	2.04	1.03
1:B:679:GLN:HB3	6:B:845:HOH:O	0.84	1.02
1:D:620:ILE:HG22	1:D:621:GLU:OE2	1.57	1.01
1:D:768:GLN:HG2	6:D:413:HOH:O	1.60	1.01
1:B:611:GLY:C	1:B:613:THR:CG2	2.28	1.01
1:C:613:THR:HG22	1:C:614:THR:H	1.25	1.00
1:C:659:LEU:HD11	1:C:779:LEU:CD2	1.92	1.00
1:C:648:LYS:O	1:C:653:GLN:HG3	1.61	0.99
1:D:648:LYS:O	1:D:649:LYS:HG3	1.62	0.99
1:D:614:THR:HG22	1:D:614:THR:O	1.58	0.99
1:B:613:THR:HG23	1:B:614:THR:N	1.79	0.97
1:D:615:LYS:HG2	6:D:428:HOH:O	1.62	0.97
1:B:613:THR:HG22	1:B:614:THR:H	0.81	0.96
1:A:620:ILE:CG2	6:A:214:HOH:O	2.13	0.96
1:A:620:ILE:HG22	6:A:214:HOH:O	1.65	0.96
1:C:655:ALA:HB3	1:C:659:LEU:HD23	1.48	0.96
1:A:628:LYS:HE3	6:A:378:HOH:O	1.65	0.95
1:D:768:GLN:NE2	6:D:477:HOH:O	2.01	0.94
1:D:631:GLU:HG3	1:D:690:MET:HE2	1.49	0.94
1:C:802:LEU:HD11	6:C:297:HOH:O	1.66	0.92
1:B:614:THR:HG22	1:B:615:LYS:H	1.35	0.92
1:C:659:LEU:CD2	1:C:779:LEU:HD21	2.00	0.92
1:C:659:LEU:CD1	1:C:779:LEU:CD2	2.48	0.91
1:D:631:GLU:CG	1:D:690:MET:HE3	2.01	0.91
1:A:704:ASN:OD1	1:A:706:GLN:CG	2.18	0.90
1:B:611:GLY:C	1:B:613:THR:HG22	1.90	0.90
1:B:557:GLY:HA2	6:B:846:HOH:O	1.71	0.90
1:B:700:SER:C	1:B:702:SER:H	1.75	0.89
1:D:633:MET:HG2	6:D:259:HOH:O	1.72	0.88
1:B:770:HIS:HD2	1:B:782:LEU:H	1.17	0.86
1:B:682:PRO:HD2	1:B:685:LYS:HE2	1.57	0.86
1:B:809:LEU:N	1:B:809:LEU:HD23	1.91	0.86
1:C:798:ALA:O	1:C:802:LEU:HD13	1.74	0.86
1:D:610:LEU:O	1:D:611:GLY:O	1.94	0.86

Continued on next page...

Continued from previous page...

Atom-1	Atom-2	Interatomic distance (Å)	Clash overlap (Å)
1:B:660:TYR:CE1	6:B:233:HOH:O	2.29	0.86
1:D:770:HIS:HD2	1:D:782:LEU:H	1.24	0.86
1:A:612:THR:HB	1:A:616:LEU:HG	1.58	0.85
1:C:659:LEU:CD1	1:C:779:LEU:HD21	2.07	0.85
1:B:649:LYS:HE2	1:B:654:GLN:N	1.92	0.84
1:C:600:LEU:HA	1:C:638:ASN:ND2	1.93	0.84
1:C:593:GLU:OE2	1:C:649:LYS:HE3	1.78	0.83
1:B:611:GLY:C	1:B:613:THR:HG21	1.96	0.83
1:C:655:ALA:HB3	1:C:659:LEU:CD2	2.10	0.82
1:A:630:ASN:OD1	1:A:633:MET:HG2	1.79	0.82
1:B:629:ASN:CB	6:B:278:HOH:O	2.08	0.82
1:C:655:ALA:CB	1:C:659:LEU:CD2	2.59	0.81
1:B:700:SER:O	1:B:702:SER:N	2.13	0.80
1:B:629:ASN:OD1	6:B:278:HOH:O	1.99	0.80
1:B:588:GLU:OE1	1:B:648:LYS:NZ	2.14	0.80
1:C:556:THR:HG22	6:C:850:HOH:O	1.80	0.79
1:B:770:HIS:CD2	1:B:782:LEU:H	1.99	0.79
1:B:614:THR:HG22	1:B:615:LYS:N	1.96	0.79
1:D:620:ILE:HG23	1:D:621:GLU:OE2	1.83	0.79
1:D:614:THR:O	1:D:614:THR:CG2	2.32	0.78
1:B:660:TYR:CE1	6:B:344:HOH:O	2.17	0.78
1:C:706:GLN:OE1	1:C:706:GLN:HA	1.83	0.77
1:D:752:MET:CG	6:D:479:HOH:O	1.73	0.76
1:C:600:LEU:C	1:C:638:ASN:HD22	1.89	0.76
1:C:770:HIS:HD2	1:C:782:LEU:H	1.34	0.76
1:D:770:HIS:CD2	1:D:782:LEU:H	2.04	0.75
1:B:660:TYR:HD1	6:B:344:HOH:O	1.35	0.75
1:C:648:LYS:C	1:C:653:GLN:HG2	2.07	0.75
1:D:768:GLN:CG	6:D:413:HOH:O	2.27	0.74
1:C:574:ARG:CZ	1:C:610:LEU:HD12	2.18	0.74
1:B:649:LYS:HE2	1:B:654:GLN:H	1.49	0.73
1:D:613:THR:C	6:D:428:HOH:O	2.26	0.73
1:D:752:MET:CE	6:D:479:HOH:O	2.34	0.73
1:C:655:ALA:CB	1:C:659:LEU:HD22	2.17	0.73
1:D:703:SER:O	1:D:704:ASN:CB	2.35	0.73
1:D:762:ASP:OD2	6:D:356:HOH:O	2.05	0.73
1:A:654:GLN:CG	6:A:376:HOH:O	2.36	0.73
1:D:706:GLN:HA	1:D:706:GLN:OE1	1.87	0.72
1:A:649:LYS:O	1:A:649:LYS:HG3	1.88	0.72
1:D:705:GLY:O	6:D:418:HOH:O	2.05	0.72
1:D:589:GLY:HA3	5:D:1763:ATP:O1B	1.88	0.72

Continued on next page...

Continued from previous page...

Atom-1	Atom-2	Interatomic distance (Å)	Clash overlap (Å)
6:B:206:HOH:O	1:D:641:LYS:HE2	1.89	0.72
1:A:654:GLN:HG3	1:A:655:ALA:H	1.53	0.72
1:A:654:GLN:HG3	6:A:376:HOH:O	1.90	0.71
1:C:659:LEU:HD21	1:C:779:LEU:HD21	1.72	0.71
1:A:654:GLN:CG	1:A:655:ALA:H	2.03	0.71
1:C:770:HIS:CD2	1:C:782:LEU:H	2.08	0.71
5:B:1761:ATP:O3G	5:B:1761:ATP:O2B	2.08	0.70
1:B:700:SER:C	1:B:702:SER:N	2.44	0.70
1:C:779:LEU:N	1:C:779:LEU:HD22	2.06	0.70
1:A:648:LYS:O	1:A:649:LYS:C	2.30	0.69
1:C:679:GLN:NE2	6:C:315:HOH:O	2.25	0.69
1:C:555:GLU:O	1:C:578:LYS:CE	2.40	0.69
1:C:615:LYS:HE3	1:C:617:PHE:HB2	1.73	0.69
1:C:613:THR:HG22	1:C:614:THR:N	2.04	0.69
1:C:648:LYS:HA	1:C:649:LYS:HB2	1.74	0.69
1:C:555:GLU:HB2	6:C:503:HOH:O	1.92	0.68
1:B:641:LYS:HE3	1:D:717:VAL:HG23	1.74	0.68
1:B:771:THR:O	1:B:783:GLY:HA2	1.94	0.67
1:C:655:ALA:HB2	1:C:659:LEU:HD22	1.77	0.66
1:D:611:GLY:HA3	6:D:498:HOH:O	1.94	0.66
1:D:745:TYR:CZ	1:D:750:LYS:HG2	2.29	0.66
1:A:579:LEU:HG	6:A:238:HOH:O	1.96	0.66
1:B:611:GLY:O	1:B:613:THR:CG2	2.43	0.66
1:C:600:LEU:C	1:C:638:ASN:ND2	2.49	0.66
1:C:659:LEU:HD11	1:C:779:LEU:HD23	1.78	0.66
1:C:633:MET:CE	6:C:404:HOH:O	2.21	0.65
1:D:768:GLN:OE1	6:D:413:HOH:O	2.13	0.65
1:C:704:ASN:OD1	1:C:706:GLN:HG2	1.97	0.65
1:D:555:GLU:OE1	1:D:600:LEU:HG	1.96	0.65
1:B:660:TYR:HE1	6:B:233:HOH:O	1.73	0.65
1:B:683:PRO:HD3	1:B:802:LEU:HD13	1.79	0.65
1:B:707:PRO:CD	6:B:347:HOH:O	1.77	0.65
1:C:600:LEU:CA	1:C:638:ASN:ND2	2.59	0.64
1:D:650:GLU:N	1:D:650:GLU:OE2	2.31	0.64
1:B:649:LYS:CE	1:B:653:GLN:N	2.60	0.63
1:B:809:LEU:N	1:B:809:LEU:CD2	2.61	0.63
1:C:600:LEU:HA	1:C:638:ASN:HD21	1.62	0.63
1:D:648:LYS:O	1:D:649:LYS:CG	2.43	0.63
1:C:579:LEU:O	1:C:579:LEU:HD12	1.98	0.63
1:C:574:ARG:CZ	1:C:610:LEU:CD1	2.77	0.63
1:C:802:LEU:HD12	6:C:504:HOH:O	1.97	0.63

Continued on next page...

Continued from previous page...

Atom-1	Atom-2	Interatomic distance (Å)	Clash overlap (Å)
1:B:611:GLY:O	1:B:613:THR:HB	1.99	0.62
1:B:614:THR:CG2	1:B:615:LYS:H	2.09	0.62
1:C:762:ASP:OD1	1:C:764:TYR:OH	2.12	0.62
6:A:252:HOH:O	1:B:626:ILE:CD1	2.46	0.62
1:D:771:THR:O	1:D:783:GLY:HA2	1.99	0.62
1:B:600:LEU:HA	1:B:638:ASN:HD22	1.65	0.62
1:A:654:GLN:HG2	6:A:376:HOH:O	1.99	0.62
1:B:600:LEU:HA	1:B:638:ASN:ND2	2.14	0.62
1:C:771:THR:O	1:C:783:GLY:HA2	1.99	0.62
1:B:802:LEU:O	1:B:802:LEU:HD23	1.99	0.62
1:B:621:GLU:CD	1:B:621:GLU:H	2.04	0.62
1:B:649:LYS:NZ	1:B:655:ALA:HB2	2.15	0.61
1:B:682:PRO:HD2	1:B:685:LYS:CE	2.26	0.61
1:C:555:GLU:O	1:C:578:LYS:NZ	2.33	0.61
1:A:620:ILE:HG23	6:A:214:HOH:O	1.87	0.61
1:B:649:LYS:HZ1	1:B:655:ALA:HB2	1.65	0.61
1:B:704:ASN:OD1	1:B:706:GLN:HG2	2.00	0.61
1:A:579:LEU:C	1:A:579:LEU:HD12	2.20	0.61
1:C:579:LEU:HD12	1:C:579:LEU:C	2.19	0.61
1:C:610:LEU:O	1:C:611:GLY:C	2.39	0.61
1:B:633:MET:HB2	6:B:294:HOH:O	2.00	0.61
1:B:641:LYS:HE2	6:D:159:HOH:O	2.00	0.61
5:C:1762:ATP:O1A	5:C:1762:ATP:O1B	2.17	0.61
1:D:573:ILE:HD13	1:D:624:SER:HB3	1.82	0.60
1:A:600:LEU:HA	1:A:638:ASN:ND2	2.16	0.60
1:A:654:GLN:HG3	1:A:655:ALA:N	2.16	0.60
1:C:745:TYR:CE2	1:C:750:LYS:HD2	2.37	0.59
1:A:771:THR:O	1:A:783:GLY:HA2	2.01	0.59
1:C:659:LEU:HD13	1:C:779:LEU:CD2	2.31	0.59
1:A:701:PRO:O	1:A:703:SER:N	2.35	0.59
1:C:779:LEU:HD22	1:C:779:LEU:H	1.68	0.59
1:C:675:ASN:O	1:C:679:GLN:HG3	2.04	0.58
1:B:648:LYS:O	1:B:649:LYS:CB	2.52	0.58
1:D:668:MET:CE	1:D:691:SER:H	2.15	0.58
1:D:703:SER:O	1:D:704:ASN:HB2	2.02	0.58
1:A:633:MET:HE3	6:A:844:HOH:O	2.02	0.58
1:A:654:GLN:CG	1:A:655:ALA:N	2.66	0.58
1:C:610:LEU:O	1:C:611:GLY:O	2.21	0.58
1:C:779:LEU:CD2	1:C:779:LEU:H	2.17	0.58
1:B:552:ILE:HB	1:B:601:GLY:HA3	1.86	0.58
1:D:631:GLU:CG	1:D:690:MET:CE	2.54	0.58

Continued on next page...

Continued from previous page...

Atom-1	Atom-2	Interatomic distance (Å)	Clash overlap (Å)
1:D:707:PRO:HD3	6:D:418:HOH:O	2.03	0.58
1:C:614:THR:OG1	1:C:615:LYS:N	2.37	0.58
1:A:806:ASP:OD2	1:A:808:LYS:HB2	2.04	0.58
1:A:621:GLU:N	6:A:214:HOH:O	2.28	0.57
1:A:629:ASN:HB2	6:A:378:HOH:O	2.04	0.57
1:A:556:THR:HG23	1:A:557:GLY:N	2.20	0.57
1:B:641:LYS:HE3	1:D:717:VAL:CG2	2.34	0.57
1:C:574:ARG:CD	1:C:610:LEU:HD11	2.35	0.57
1:D:631:GLU:CG	1:D:690:MET:HE2	2.29	0.56
1:B:552:ILE:N	6:B:392:HOH:O	2.36	0.56
1:D:613:THR:HG22	1:D:613:THR:O	2.05	0.56
1:A:654:GLN:HA	1:A:654:GLN:OE1	2.06	0.56
1:B:647:TYR:HD1	6:B:233:HOH:O	1.88	0.56
1:B:679:GLN:CG	6:B:845:HOH:O	2.32	0.55
1:A:796:CYS:HB2	1:A:800:CYS:CB	2.36	0.55
1:D:707:PRO:HG2	6:D:343:HOH:O	2.05	0.55
1:C:659:LEU:CD1	1:C:779:LEU:HD22	2.35	0.55
1:D:665:LYS:HE2	6:D:848:HOH:O	2.06	0.55
1:D:703:SER:O	1:D:704:ASN:HB3	2.06	0.55
1:A:649:LYS:O	1:A:649:LYS:CG	2.54	0.55
1:A:654:GLN:NE2	6:A:464:HOH:O	2.39	0.54
6:A:252:HOH:O	1:B:626:ILE:HD11	2.06	0.54
1:A:600:LEU:HA	1:A:638:ASN:HD22	1.72	0.54
1:A:706:GLN:HA	1:A:706:GLN:OE1	2.07	0.54
1:C:571:LYS:HE2	6:C:182:HOH:O	2.07	0.54
1:B:762:ASP:HA	1:B:764:TYR:CZ	2.43	0.54
1:C:779:LEU:CD2	1:C:779:LEU:N	2.70	0.54
1:C:731:LEU:N	1:C:731:LEU:HD12	2.23	0.54
1:D:736:THR:HB	1:D:737:PRO:HD3	1.90	0.53
1:A:581:VAL:HG12	6:A:23:HOH:O	2.07	0.53
1:B:611:GLY:O	1:B:613:THR:HG22	2.08	0.53
1:B:621:GLU:N	1:B:621:GLU:OE1	2.42	0.53
1:B:595:TYR:CE1	2:B:5959:PO4:O3	2.62	0.52
1:C:649:LYS:H	1:C:653:GLN:CD	2.12	0.52
1:B:672:ASP:OD2	6:B:509:HOH:O	2.18	0.52
1:C:659:LEU:HD22	1:C:779:LEU:HD21	1.84	0.52
1:C:655:ALA:CB	1:C:659:LEU:HD23	2.24	0.52
1:A:556:THR:HG23	1:A:557:GLY:H	1.74	0.52
1:B:584:LYS:NZ	6:B:369:HOH:O	2.31	0.51
1:C:613:THR:C	1:C:614:THR:HG22	2.29	0.51
1:A:607:ASN:ND2	6:A:424:HOH:O	2.43	0.51

Continued on next page...

Continued from previous page...

Atom-1	Atom-2	Interatomic distance (Å)	Clash overlap (Å)
1:D:595:TYR:CE1	2:D:5960:PO4:O1	2.63	0.51
1:D:649:LYS:C	1:D:650:GLU:OE2	2.49	0.51
1:D:704:ASN:OD1	1:D:706:GLN:HG2	2.10	0.51
1:B:653:GLN:HA	1:B:653:GLN:OE1	2.09	0.51
1:C:621:GLU:O	1:C:621:GLU:HG2	2.08	0.51
1:A:704:ASN:OD1	1:A:706:GLN:CB	2.59	0.51
1:C:648:LYS:C	1:C:653:GLN:CG	2.71	0.51
1:D:552:ILE:CG2	1:D:553:SER:N	2.73	0.51
1:C:556:THR:O	1:C:556:THR:HG23	2.11	0.51
1:C:807:VAL:HG22	1:C:808:LYS:N	2.24	0.51
1:D:725:SER:HB2	6:D:185:HOH:O	2.11	0.51
1:A:768:GLN:NE2	1:A:780:GLY:H	2.08	0.50
1:C:617:PHE:HA	1:C:618:PRO:C	2.30	0.50
1:B:611:GLY:O	1:B:613:THR:CB	2.59	0.50
1:B:704:ASN:OD1	1:B:704:ASN:C	2.49	0.50
1:C:570:ASN:O	1:C:571:LYS:HG2	2.11	0.50
1:B:679:GLN:CB	6:B:845:HOH:O	1.71	0.49
1:C:622:MET:HE2	6:C:848:HOH:O	2.11	0.49
1:A:617:PHE:HA	1:A:618:PRO:C	2.32	0.49
1:B:707:PRO:HG2	6:B:385:HOH:O	2.11	0.49
1:B:703:SER:C	1:B:705:GLY:H	2.15	0.49
1:B:802:LEU:HD23	1:B:802:LEU:C	2.32	0.48
1:C:648:LYS:HA	1:C:649:LYS:CB	2.39	0.48
1:C:574:ARG:HD3	1:C:610:LEU:HD11	1.95	0.48
1:D:745:TYR:CE2	1:D:750:LYS:HG2	2.49	0.48
1:A:768:GLN:NE2	6:A:293:HOH:O	2.36	0.48
1:C:807:VAL:CG2	1:C:808:LYS:N	2.76	0.48
1:D:752:MET:SD	6:D:479:HOH:O	2.45	0.47
1:A:630:ASN:HD21	1:A:633:MET:CE	2.27	0.47
1:A:633:MET:CE	6:A:844:HOH:O	2.59	0.47
1:B:553:SER:HB3	1:B:600:LEU:HB3	1.95	0.47
1:B:633:MET:CB	6:B:294:HOH:O	2.61	0.47
1:C:592:ARG:HG2	1:C:647:TYR:HA	1.96	0.47
1:C:803:LEU:O	1:C:804:ASP:HB2	2.15	0.47
1:B:573:ILE:HD13	1:B:624:SER:HB3	1.96	0.47
1:C:557:GLY:N	1:C:578:LYS:NZ	2.63	0.47
1:B:579:LEU:CD1	1:B:581:VAL:HG23	2.45	0.46
1:B:579:LEU:HD13	1:B:581:VAL:CG2	2.45	0.46
1:A:579:LEU:HD12	1:A:579:LEU:O	2.16	0.46
1:A:612:THR:CB	1:A:616:LEU:HG	2.36	0.46
1:A:573:ILE:CG2	1:A:627:SER:HB2	2.46	0.46

Continued on next page...

Continued from previous page...

Atom-1	Atom-2	Interatomic distance (Å)	Clash overlap (Å)
1:C:613:THR:CG2	1:C:614:THR:H	2.07	0.46
1:B:671:ARG:HG3	1:B:688:PHE:HB2	1.97	0.46
1:C:745:TYR:CZ	1:C:750:LYS:HB3	2.51	0.46
1:C:706:GLN:OE1	1:C:706:GLN:CA	2.60	0.45
5:D:1763:ATP:O1B	5:D:1763:ATP:H5'2	2.16	0.45
1:D:743:PHE:CE1	1:D:747:LEU:HD13	2.52	0.45
1:C:659:LEU:CG	1:C:779:LEU:HD21	2.47	0.45
1:C:777:PHE:O	1:C:778:GLY:O	2.35	0.45
1:C:648:LYS:HG3	1:C:649:LYS:HB2	1.98	0.45
5:D:1763:ATP:O1B	5:D:1763:ATP:O1A	2.35	0.45
1:D:701:PRO:O	1:D:704:ASN:O	2.34	0.45
1:C:613:THR:N	6:C:430:HOH:O	2.49	0.45
1:C:701:PRO:O	1:C:702:SER:C	2.56	0.45
1:D:552:ILE:N	6:D:437:HOH:O	2.50	0.45
1:A:700:SER:HA	1:A:701:PRO:HD3	1.79	0.44
1:C:649:LYS:N	1:C:653:GLN:HG2	2.33	0.44
1:A:654:GLN:CD	1:A:655:ALA:H	2.20	0.44
1:B:629:ASN:CG	6:B:278:HOH:O	2.31	0.44
1:C:555:GLU:O	1:C:578:LYS:HE2	2.14	0.44
1:C:579:LEU:C	1:C:579:LEU:CD1	2.86	0.44
1:A:649:LYS:HB2	1:A:649:LYS:HE3	1.68	0.44
1:C:613:THR:O	1:C:614:THR:CG2	2.65	0.44
1:A:727:TYR:CD1	1:A:782:LEU:HD12	2.53	0.44
1:C:731:LEU:N	1:C:731:LEU:CD1	2.80	0.44
1:D:621:GLU:CD	1:D:621:GLU:H	2.21	0.44
1:B:752:MET:CE	1:B:769:ILE:HD13	2.48	0.43
1:C:593:GLU:OE2	1:C:649:LYS:CE	2.58	0.43
5:C:1762:ATP:O2B	5:C:1762:ATP:O3G	2.35	0.43
1:B:807:VAL:HG23	6:B:423:HOH:O	2.18	0.43
5:B:1761:ATP:O1A	5:B:1761:ATP:O1B	2.36	0.43
1:D:686:ILE:HD11	1:D:740:PHE:CD1	2.53	0.43
1:A:762:ASP:OD1	1:A:764:TYR:OH	2.27	0.43
1:C:659:LEU:HD13	1:C:779:LEU:HD22	1.97	0.43
1:B:808:LYS:C	1:B:809:LEU:HD23	2.39	0.43
1:D:768:GLN:NE2	1:D:780:GLY:C	2.72	0.43
1:D:668:MET:HE2	1:D:691:SER:H	1.82	0.43
1:D:768:GLN:CD	1:D:780:GLY:HA3	2.39	0.43
1:A:668:MET:HE1	1:A:690:MET:HA	2.01	0.43
1:C:659:LEU:HD21	1:C:779:LEU:CD2	2.45	0.43
1:C:704:ASN:CG	1:C:706:GLN:HG2	2.40	0.43
1:B:574:ARG:NE	1:B:610:LEU:HD13	2.34	0.43

Continued on next page...

Continued from previous page...

Atom-1	Atom-2	Interatomic distance (Å)	Clash overlap (Å)
1:B:614:THR:CG2	1:B:615:LYS:N	2.66	0.43
1:B:762:ASP:N	6:B:249:HOH:O	2.05	0.43
1:C:630:ASN:OD1	1:C:633:MET:HG2	2.19	0.42
1:A:796:CYS:HB2	1:A:800:CYS:HB2	2.01	0.42
1:A:807:VAL:HG13	6:A:442:HOH:O	2.18	0.42
1:A:579:LEU:CG	6:A:238:HOH:O	2.61	0.42
1:D:552:ILE:O	1:D:553:SER:HB2	2.20	0.42
1:D:611:GLY:HA2	1:D:612:THR:HA	1.72	0.42
1:C:581:VAL:HG12	6:C:94:HOH:O	2.20	0.41
1:C:730:VAL:C	1:C:731:LEU:HD12	2.41	0.41
1:C:736:THR:HB	1:C:737:PRO:HD3	2.03	0.41
1:D:762:ASP:HB2	6:D:356:HOH:O	2.19	0.41
1:B:555:GLU:HG3	1:B:556:THR:N	2.35	0.41
1:B:736:THR:N	1:B:737:PRO:CD	2.82	0.41
1:A:668:MET:HE3	1:A:691:SER:H	1.85	0.41
1:C:654:GLN:O	1:C:654:GLN:HG2	2.20	0.41
1:D:647:TYR:CE1	1:D:659:LEU:HD21	2.54	0.41
1:C:745:TYR:CE1	1:C:750:LYS:HB3	2.55	0.41
1:D:706:GLN:HA	1:D:707:PRO:HD2	1.92	0.41
1:C:574:ARG:NE	1:C:610:LEU:HD11	2.35	0.41
1:C:745:TYR:CZ	1:C:750:LYS:HD2	2.56	0.41
1:A:727:TYR:HD1	1:A:782:LEU:HD12	1.85	0.41
1:C:604:THR:OG1	1:C:606:GLU:HG2	2.21	0.41
1:B:555:GLU:HG3	1:B:556:THR:H	1.86	0.40
1:D:766:ALA:N	1:D:767:PRO:CD	2.85	0.40

All (1) symmetry-related close contacts are listed below. The label for Atom-2 includes the symmetry operator and encoded unit-cell translations to be applied.

Atom-1	Atom-2	Interatomic distance (Å)	Clash overlap (Å)
1:A:615:LYS:NZ	1:B:801:ALA:CB[4_554]	1.09	1.11

5.3 Torsion angles [i](#)

5.3.1 Protein backbone [i](#)

In the following table, the Percentiles column shows the percent Ramachandran outliers of the chain as a percentile score with respect to all X-ray entries followed by that with respect to entries of similar resolution.

The Analysed column shows the number of residues for which the backbone conformation was analysed, and the total number of residues.

Mol	Chain	Analysed	Favoured	Allowed	Outliers	Percentiles	
1	A	238/307 (78%)	231 (97%)	5 (2%)	2 (1%)	19	19
1	B	248/307 (81%)	238 (96%)	7 (3%)	3 (1%)	13	10
1	C	241/307 (78%)	231 (96%)	9 (4%)	1 (0%)	34	37
1	D	249/307 (81%)	233 (94%)	12 (5%)	4 (2%)	9	7
All	All	976/1228 (80%)	933 (96%)	33 (3%)	10 (1%)	15	14

All (10) Ramachandran outliers are listed below:

Mol	Chain	Res	Type
1	B	702	SER
1	D	611	GLY
1	D	704	ASN
1	D	649	LYS
1	A	655	ALA
1	B	701	PRO
1	C	778	GLY
1	B	704	ASN
1	D	702	SER
1	A	611	GLY

5.3.2 Protein sidechains [i](#)

In the following table, the Percentiles column shows the percent sidechain outliers of the chain as a percentile score with respect to all X-ray entries followed by that with respect to entries of similar resolution.

The Analysed column shows the number of residues for which the sidechain conformation was analysed, and the total number of residues.

Mol	Chain	Analysed	Rotameric	Outliers	Percentiles	
1	A	217/269 (81%)	217 (100%)	0	100	100
1	B	225/269 (84%)	217 (96%)	8 (4%)	35	45
1	C	221/269 (82%)	217 (98%)	4 (2%)	59	72
1	D	225/269 (84%)	222 (99%)	3 (1%)	69	81
All	All	888/1076 (82%)	873 (98%)	15 (2%)	60	74

All (15) residues with a non-rotameric sidechain are listed below:

Mol	Chain	Res	Type
1	B	552	ILE
1	B	613	THR
1	B	620	ILE
1	B	621	GLU
1	B	641	LYS
1	B	667	GLN
1	B	701	PRO
1	B	809	LEU
1	C	555	GLU
1	C	621	GLU
1	C	648	LYS
1	C	653	GLN
1	D	637	LYS
1	D	650	GLU
1	D	667	GLN

Sometimes sidechains can be flipped to improve hydrogen bonding and reduce clashes. All (15) such sidechains are listed below:

Mol	Chain	Res	Type
1	A	638	ASN
1	A	733	ASN
1	A	768	GLN
1	B	607	ASN
1	B	629	ASN
1	B	638	ASN
1	B	770	HIS
1	C	607	ASN
1	C	638	ASN
1	C	733	ASN
1	C	770	HIS
1	D	607	ASN
1	D	638	ASN
1	D	768	GLN
1	D	770	HIS

5.3.3 RNA [i](#)

There are no RNA molecules in this entry.

5.4 Non-standard residues in protein, DNA, RNA chains [i](#)

There are no non-standard protein/DNA/RNA residues in this entry.

5.5 Carbohydrates [i](#)

There are no monosaccharides in this entry.

5.6 Ligand geometry [i](#)

Of 18 ligands modelled in this entry, 8 are monoatomic - leaving 10 for Mogul analysis.

In the following table, the Counts columns list the number of bonds (or angles) for which Mogul statistics could be retrieved, the number of bonds (or angles) that are observed in the model and the number of bonds (or angles) that are defined in the Chemical Component Dictionary. The Link column lists molecule types, if any, to which the group is linked. The Z score for a bond length (or angle) is the number of standard deviations the observed value is removed from the expected value. A bond length (or angle) with $|Z| > 2$ is considered an outlier worth inspection. RMSZ is the root-mean-square of all Z scores of the bond lengths (or angles).

Mol	Type	Chain	Res	Link	Bond lengths			Bond angles		
					Counts	RMSZ	$\# Z > 2$	Counts	RMSZ	$\# Z > 2$
2	PO4	B	5959	-	4,4,4	0.90	0	6,6,6	0.43	0
2	PO4	B	5956	-	4,4,4	1.00	0	6,6,6	0.64	0
5	ATP	C	1762	4	26,33,33	1.04	2 (7%)	31,52,52	1.84	4 (12%)
2	PO4	A	5955	-	4,4,4	0.89	0	6,6,6	0.74	0
5	ATP	B	1761	4	26,33,33	0.92	1 (3%)	31,52,52	1.81	6 (19%)
2	PO4	D	5958	-	4,4,4	0.96	0	6,6,6	0.63	0
2	PO4	C	5957	-	4,4,4	0.81	0	6,6,6	0.65	0
5	ATP	D	1763	4	26,33,33	0.96	2 (7%)	31,52,52	1.86	4 (12%)
2	PO4	D	5960	-	4,4,4	0.90	0	6,6,6	0.46	0
5	ATP	A	1760	4	26,33,33	1.01	2 (7%)	31,52,52	1.35	5 (16%)

In the following table, the Chirals column lists the number of chiral outliers, the number of chiral centers analysed, the number of these observed in the model and the number defined in the Chemical Component Dictionary. Similar counts are reported in the Torsion and Rings columns. '-' means no outliers of that kind were identified.

Mol	Type	Chain	Res	Link	Chirals	Torsions	Rings
5	ATP	B	1761	4	-	2/18/38/38	0/3/3/3
5	ATP	D	1763	4	-	1/18/38/38	0/3/3/3
5	ATP	C	1762	4	-	1/18/38/38	0/3/3/3
5	ATP	A	1760	4	-	1/18/38/38	0/3/3/3

All (7) bond length outliers are listed below:

Mol	Chain	Res	Type	Atoms	Z	Observed(Å)	Ideal(Å)
5	A	1760	ATP	C5-C4	2.50	1.47	1.40
5	C	1762	ATP	C5-C4	2.46	1.47	1.40
5	D	1763	ATP	O4'-C1'	2.40	1.44	1.41
5	C	1762	ATP	C2'-C1'	-2.36	1.50	1.53
5	B	1761	ATP	C5-C4	2.25	1.46	1.40
5	A	1760	ATP	C2'-C1'	-2.19	1.50	1.53
5	D	1763	ATP	C5-C4	2.10	1.46	1.40

All (19) bond angle outliers are listed below:

Mol	Chain	Res	Type	Atoms	Z	Observed(°)	Ideal(°)
5	C	1762	ATP	PA-O3A-PB	-6.62	110.12	132.83
5	D	1763	ATP	PA-O3A-PB	-6.56	110.30	132.83
5	B	1761	ATP	PA-O3A-PB	-5.16	115.12	132.83
5	B	1761	ATP	PB-O3B-PG	-4.55	117.20	132.83
5	B	1761	ATP	N3-C2-N1	-4.18	122.14	128.68
5	C	1762	ATP	PB-O3B-PG	-4.07	118.86	132.83
5	D	1763	ATP	N3-C2-N1	-3.99	122.44	128.68
5	A	1760	ATP	N3-C2-N1	-3.67	122.94	128.68
5	C	1762	ATP	N3-C2-N1	-3.56	123.11	128.68
5	D	1763	ATP	PB-O3B-PG	-3.29	121.53	132.83
5	A	1760	ATP	PB-O3B-PG	-2.54	124.11	132.83
5	D	1763	ATP	C2-N1-C6	2.53	123.09	118.75
5	B	1761	ATP	C2-N1-C6	2.32	122.72	118.75
5	A	1760	ATP	C2-N1-C6	2.23	122.57	118.75
5	B	1761	ATP	C4-C5-N7	-2.23	107.08	109.40
5	A	1760	ATP	PA-O3A-PB	-2.20	125.27	132.83
5	A	1760	ATP	C4-C5-N7	-2.16	107.15	109.40
5	C	1762	ATP	C4-C5-N7	-2.06	107.25	109.40
5	B	1761	ATP	O3G-PG-O2G	2.05	115.46	107.64

There are no chirality outliers.

All (5) torsion outliers are listed below:

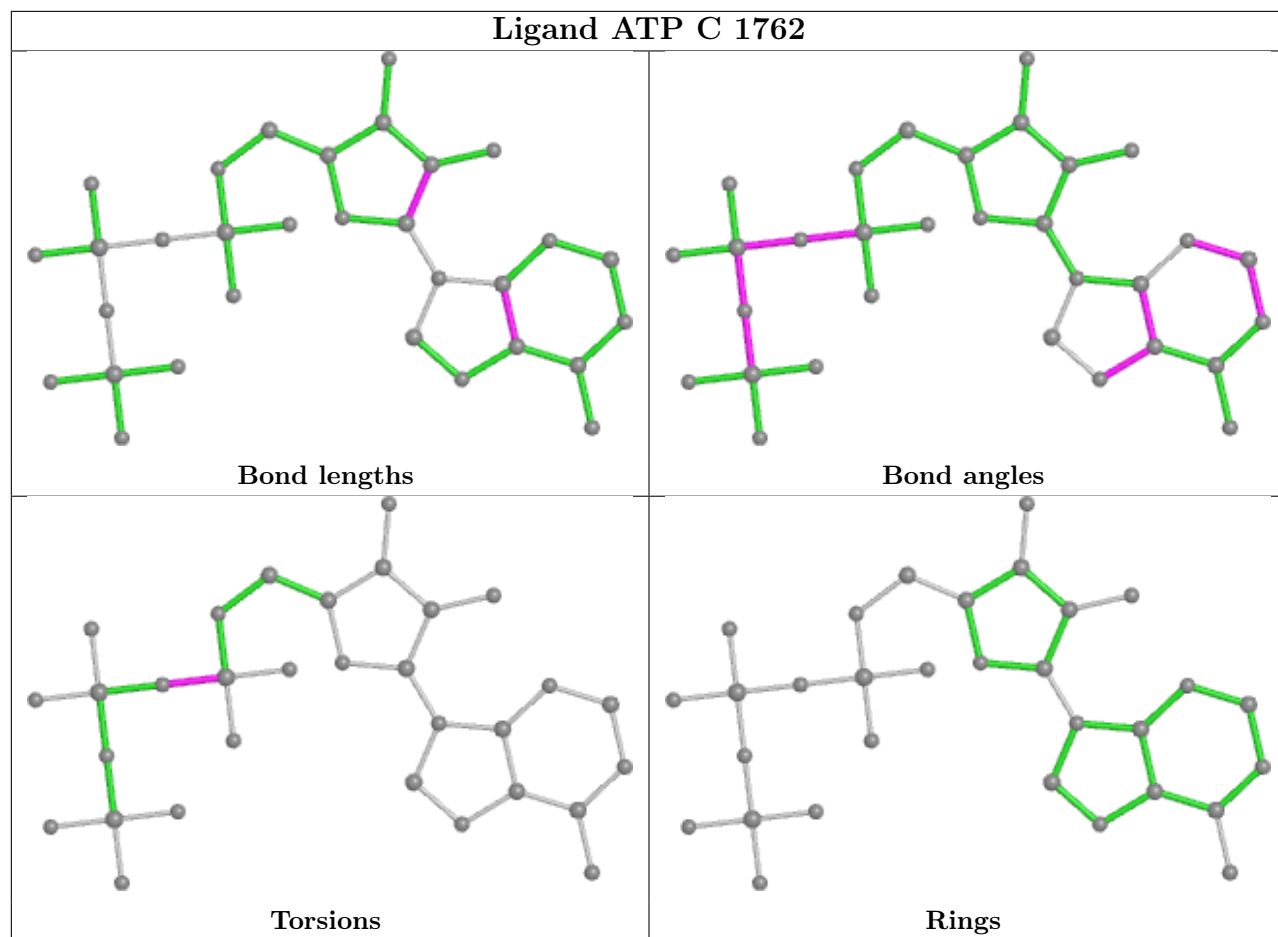
Mol	Chain	Res	Type	Atoms
5	B	1761	ATP	PB-O3B-PG-O2G
5	B	1761	ATP	PB-O3B-PG-O3G
5	D	1763	ATP	PB-O3A-PA-O1A
5	A	1760	ATP	PB-O3B-PG-O1G
5	C	1762	ATP	PB-O3A-PA-O2A

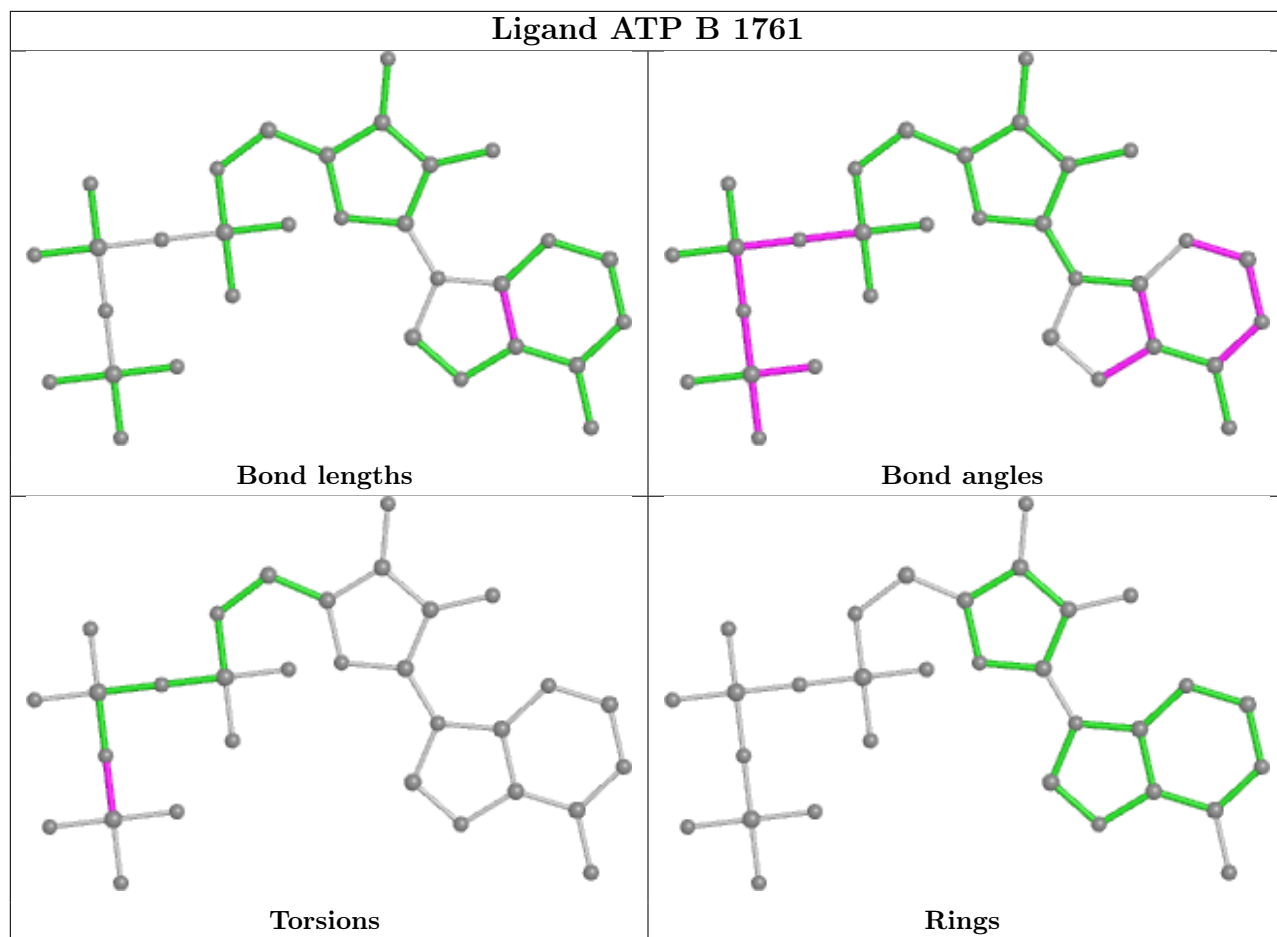
There are no ring outliers.

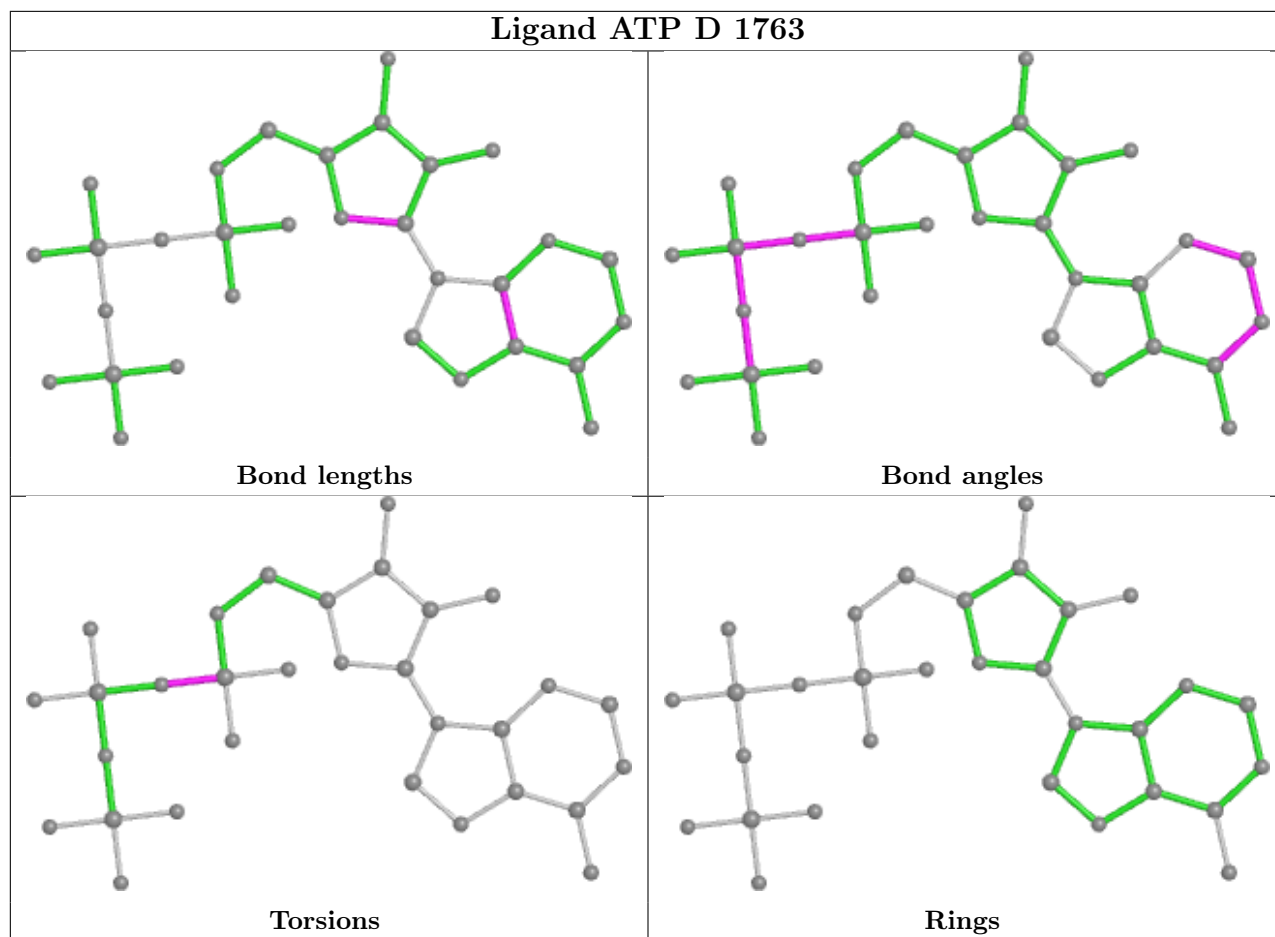
5 monomers are involved in 9 short contacts:

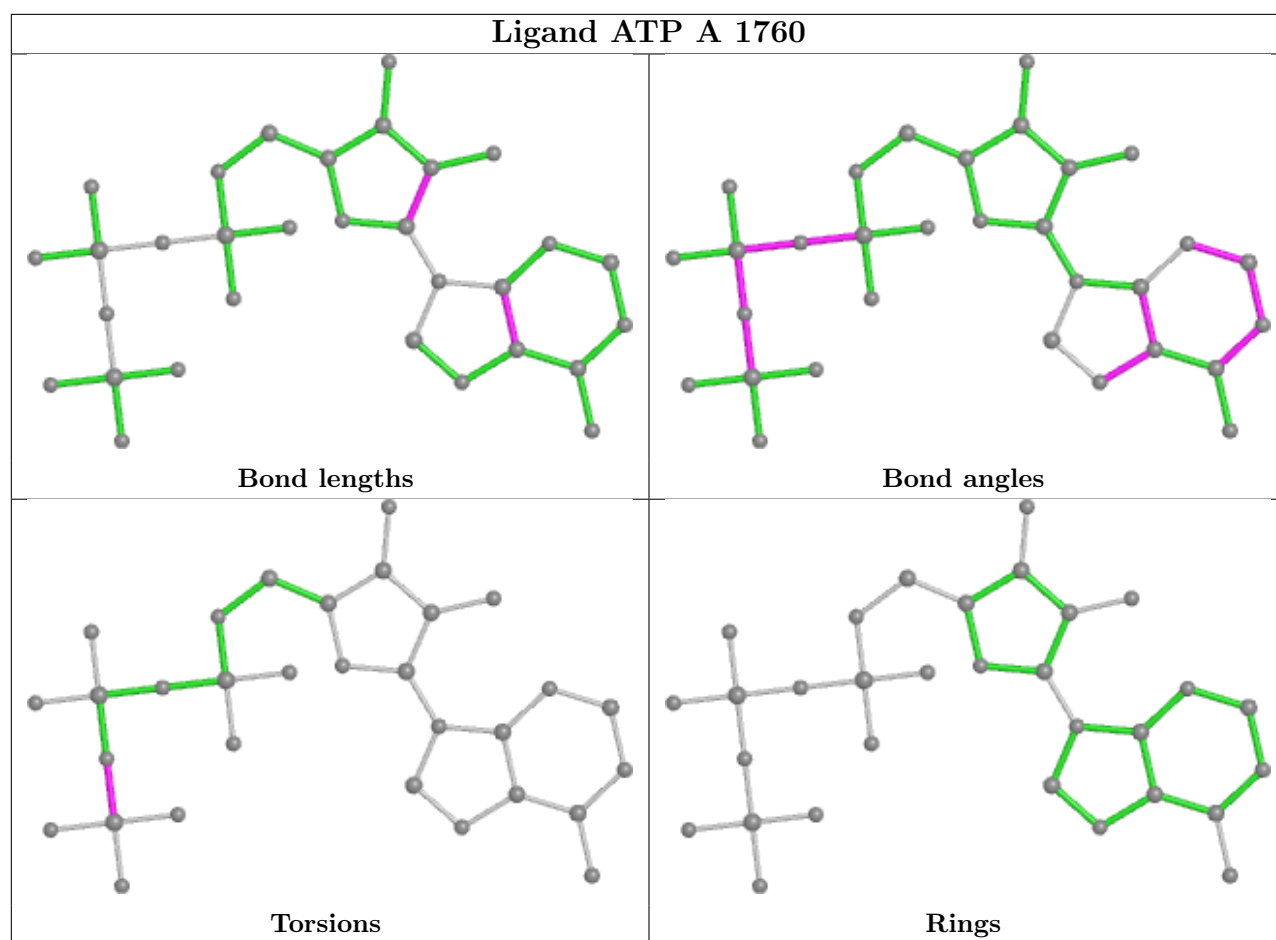
Mol	Chain	Res	Type	Clashes	Symm-Clashes
2	B	5959	PO4	1	0
5	C	1762	ATP	2	0
5	B	1761	ATP	2	0
5	D	1763	ATP	3	0
2	D	5960	PO4	1	0

The following is a two-dimensional graphical depiction of Mogul quality analysis of bond lengths, bond angles, torsion angles, and ring geometry for all instances of the Ligand of Interest. In addition, ligands with molecular weight > 250 and outliers as shown on the validation Tables will also be included. For torsion angles, if less than 5% of the Mogul distribution of torsion angles is within 10 degrees of the torsion angle in question, then that torsion angle is considered an outlier. Any bond that is central to one or more torsion angles identified as an outlier by Mogul will be highlighted in the graph. For rings, the root-mean-square deviation (RMSD) between the ring in question and similar rings identified by Mogul is calculated over all ring torsion angles. If the average RMSD is greater than 60 degrees and the minimal RMSD between the ring in question and any Mogul-identified rings is also greater than 60 degrees, then that ring is considered an outlier. The outliers are highlighted in purple. The color gray indicates Mogul did not find sufficient equivalents in the CSD to analyse the geometry.









5.7 Other polymers [i](#)

There are no such residues in this entry.

5.8 Polymer linkage issues [i](#)

There are no chain breaks in this entry.

6 Fit of model and data

6.1 Protein, DNA and RNA chains

In the following table, the column labelled ‘#RSRZ > 2’ contains the number (and percentage) of RSRZ outliers, followed by percent RSRZ outliers for the chain as percentile scores relative to all X-ray entries and entries of similar resolution. The OWAB column contains the minimum, median, 95th percentile and maximum values of the occupancy-weighted average B-factor per residue. The column labelled ‘Q < 0.9’ lists the number of (and percentage) of residues with an average occupancy less than 0.9.

Mol	Chain	Analysed	<RSRZ>	#RSRZ>2	OWAB(Å ²)	Q<0.9
1	A	246/307 (80%)	-0.33	6 (2%) 59 56	9, 20, 40, 50	0
1	B	254/307 (82%)	-0.36	9 (3%) 44 42	6, 16, 43, 55	0
1	C	250/307 (81%)	-0.30	8 (3%) 47 45	9, 20, 42, 57	0
1	D	253/307 (82%)	-0.35	14 (5%) 25 24	7, 16, 42, 50	0
All	All	1003/1228 (81%)	-0.34	37 (3%) 41 39	6, 18, 42, 57	0

All (37) RSRZ outliers are listed below:

Mol	Chain	Res	Type	RSRZ
1	A	612	THR	5.0
1	C	614	THR	4.7
1	B	702	SER	4.5
1	A	655	ALA	4.3
1	D	703	SER	3.7
1	B	654	GLN	3.5
1	C	705	GLY	3.4
1	D	614	THR	3.3
1	D	612	THR	3.3
1	A	796	CYS	3.3
1	B	554	SER	3.2
1	D	650	GLU	3.1
1	D	808	LYS	3.0
1	B	613	THR	3.0
1	B	615	LYS	3.0
1	D	611	GLY	3.0
1	B	703	SER	2.9
1	A	705	GLY	2.9
1	C	796	CYS	2.8
1	A	556	THR	2.7
1	D	702	SER	2.5

Continued on next page...

Continued from previous page...

Mol	Chain	Res	Type	RSRZ
1	D	704	ASN	2.5
1	C	702	SER	2.5
1	C	655	ALA	2.5
1	D	616	LEU	2.3
1	B	616	LEU	2.3
1	C	556	THR	2.3
1	D	706	GLN	2.2
1	B	611	GLY	2.2
1	B	614	THR	2.2
1	D	617	PHE	2.2
1	C	808	LYS	2.2
1	C	613	THR	2.1
1	D	615	LYS	2.1
1	D	552	ILE	2.1
1	A	778	GLY	2.1
1	D	613	THR	2.0

6.2 Non-standard residues in protein, DNA, RNA chains [i](#)

There are no non-standard protein/DNA/RNA residues in this entry.

6.3 Carbohydrates [i](#)

There are no monosaccharides in this entry.

6.4 Ligands [i](#)

In the following table, the Atoms column lists the number of modelled atoms in the group and the number defined in the chemical component dictionary. The B-factors column lists the minimum, median, 95th percentile and maximum values of B factors of atoms in the group. The column labelled 'Q< 0.9' lists the number of atoms with occupancy less than 0.9.

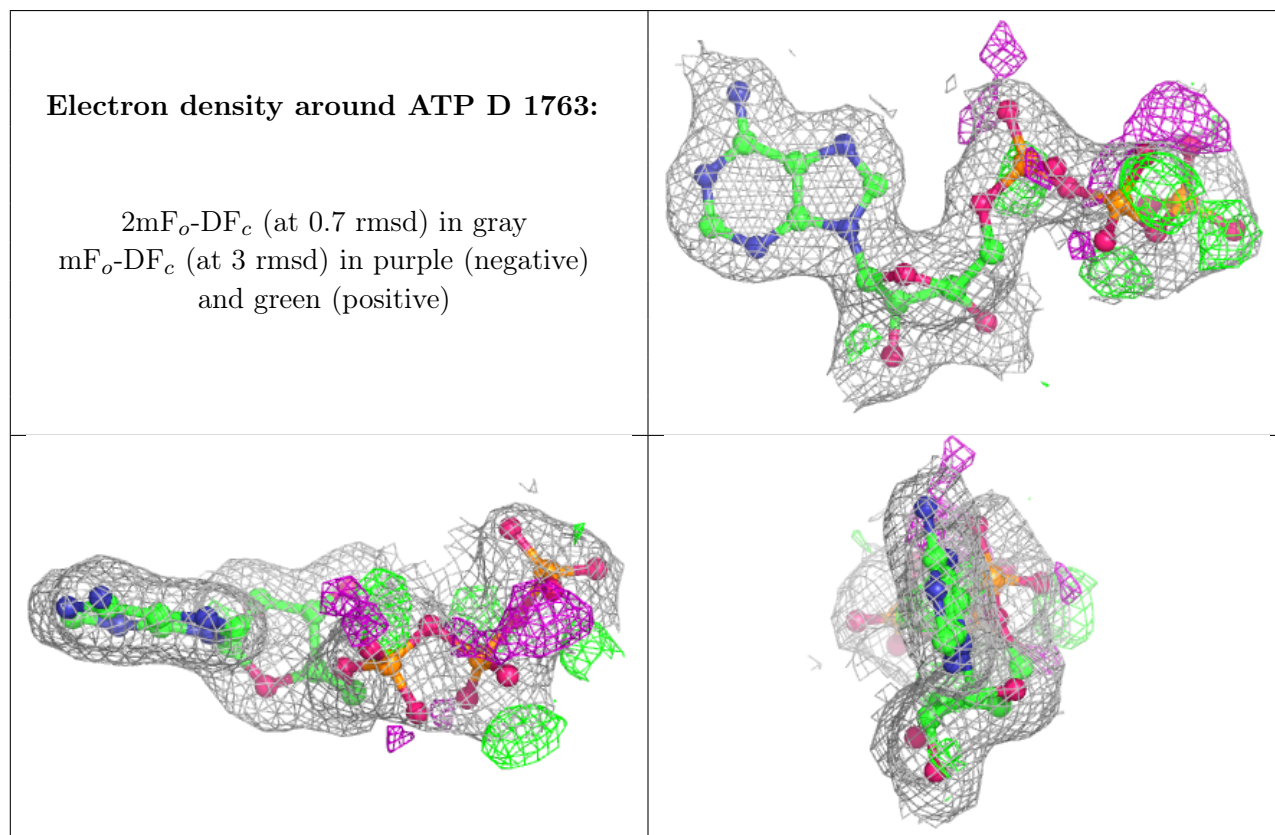
Mol	Type	Chain	Res	Atoms	RSCC	RSR	B-factors(Å ²)	Q<0.9
2	PO4	B	5959	5/5	0.80	0.24	89,89,89,89	0
2	PO4	D	5960	5/5	0.88	0.27	87,87,87,87	0
4	MG	C	1007	1/1	0.89	0.13	24,24,24,24	0
5	ATP	D	1763	31/31	0.93	0.13	8,17,43,44	0
5	ATP	C	1762	31/31	0.94	0.12	12,16,41,42	0
5	ATP	B	1761	31/31	0.94	0.11	7,16,42,43	0
5	ATP	A	1760	31/31	0.95	0.12	9,19,42,43	0

Continued on next page...

Continued from previous page...

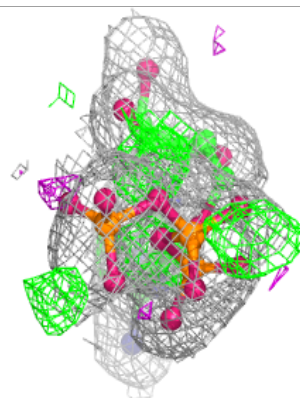
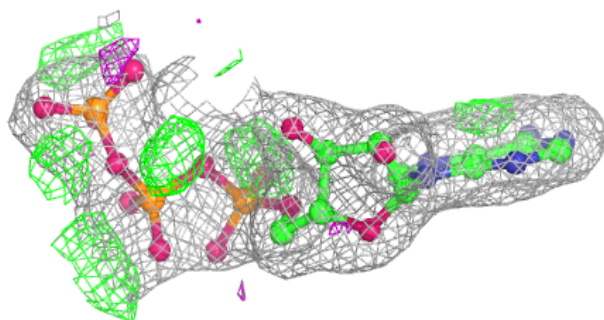
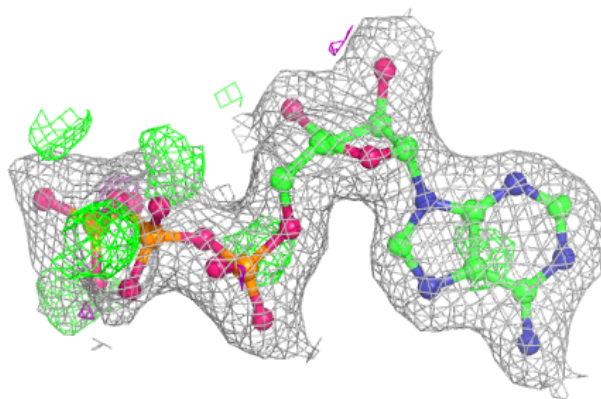
Mol	Type	Chain	Res	Atoms	RSCC	RSR	B-factors(\AA^2)	Q<0.9
4	MG	D	1008	1/1	0.95	0.09	21,21,21,21	0
4	MG	B	1005	1/1	0.96	0.14	22,22,22,22	0
2	PO4	D	5958	5/5	0.98	0.09	20,21,22,23	0
2	PO4	A	5955	5/5	0.98	0.08	14,17,18,19	0
2	PO4	C	5957	5/5	0.98	0.09	18,19,20,20	0
4	MG	A	1006	1/1	0.99	0.08	21,21,21,21	0
2	PO4	B	5956	5/5	0.99	0.08	17,18,19,20	0
3	ZN	A	1001	1/1	0.99	0.10	17,17,17,17	0
3	ZN	C	1003	1/1	0.99	0.08	18,18,18,18	0
3	ZN	B	1002	1/1	1.00	0.08	13,13,13,13	0
3	ZN	D	1004	1/1	1.00	0.09	14,14,14,14	0

The following is a graphical depiction of the model fit to experimental electron density of all instances of the Ligand of Interest. In addition, ligands with molecular weight > 250 and outliers as shown on the geometry validation Tables will also be included. Each fit is shown from different orientation to approximate a three-dimensional view.

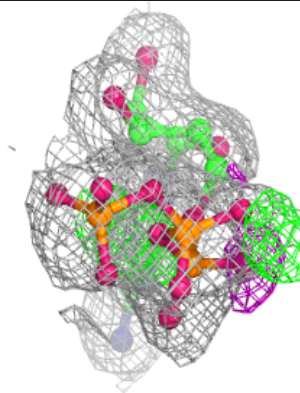
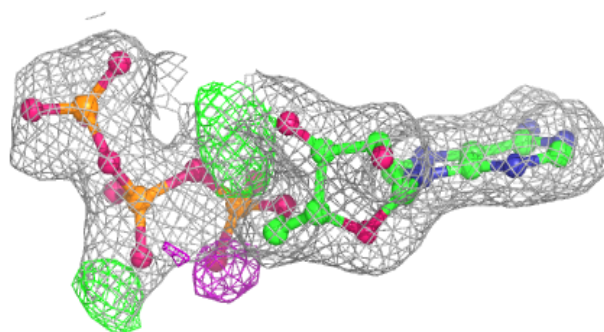
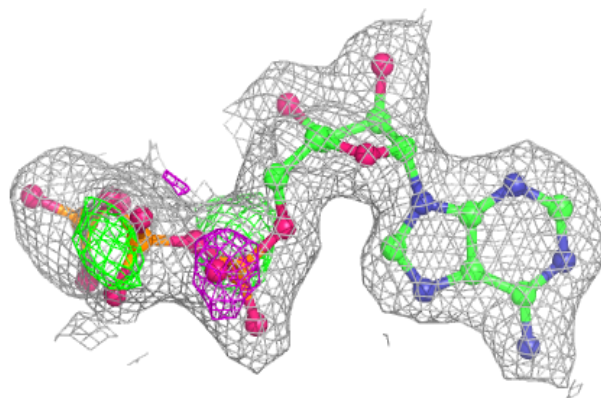


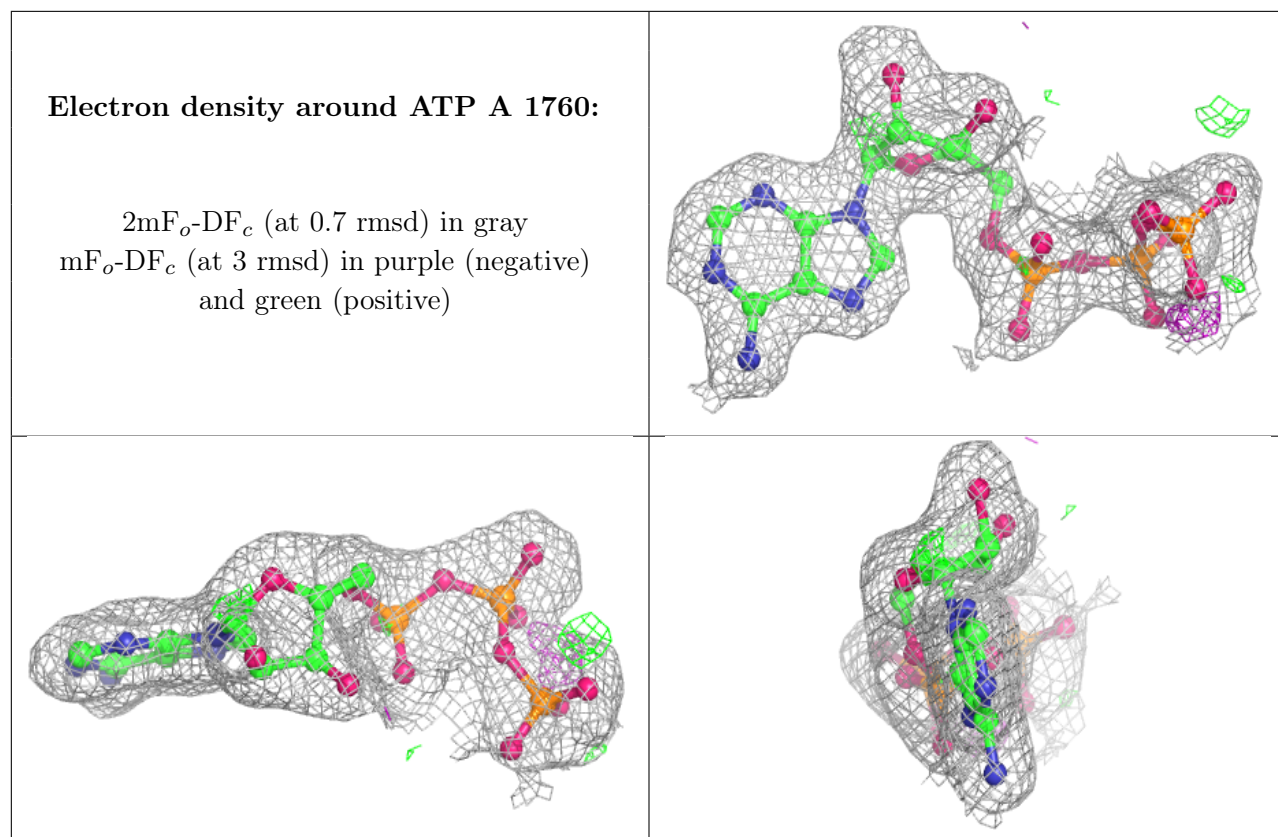
Electron density around ATP C 1762:

$2mF_o-DF_c$ (at 0.7 rmsd) in gray
 mF_o-DF_c (at 3 rmsd) in purple (negative)
and green (positive)

**Electron density around ATP B 1761:**

$2mF_o-DF_c$ (at 0.7 rmsd) in gray
 mF_o-DF_c (at 3 rmsd) in purple (negative)
and green (positive)





6.5 Other polymers [i](#)

There are no such residues in this entry.