



# Full wwPDB X-ray Structure Validation Report ⓘ

Feb 20, 2024 – 02:06 AM EST

PDB ID : 4LOH  
Title : Crystal structure of hSTING(H232) in complex with c[G(2',5')pA(3',5')p]  
Authors : Gao, P.; Patel, D.J.  
Deposited on : 2013-07-12  
Resolution : 2.25 Å(reported)

This is a Full wwPDB X-ray Structure Validation Report for a publicly released PDB entry.

We welcome your comments at [validation@mail.wwpdb.org](mailto:validation@mail.wwpdb.org)

A user guide is available at

<https://www.wwpdb.org/validation/2017/XrayValidationReportHelp>

with specific help available everywhere you see the ⓘ symbol.

The types of validation reports are described at

<http://www.wwpdb.org/validation/2017/FAQs#types>.

---

The following versions of software and data (see [references ⓘ](#)) were used in the production of this report:

MolProbity : 4.02b-467  
Mogul : 1.8.5 (274361), CSD as541be (2020)  
Xtriage (Phenix) : 1.13  
EDS : 2.36  
buster-report : 1.1.7 (2018)  
Percentile statistics : 20191225.v01 (using entries in the PDB archive December 25th 2019)  
Refmac : 5.8.0158  
CCP4 : 7.0.044 (Gargrove)  
Ideal geometry (proteins) : Engh & Huber (2001)  
Ideal geometry (DNA, RNA) : Parkinson et al. (1996)  
Validation Pipeline (wwPDB-VP) : 2.36

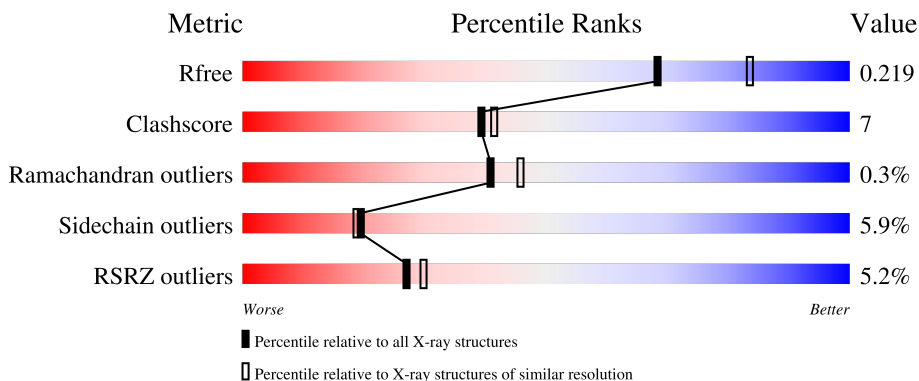
# 1 Overall quality at a glance

The following experimental techniques were used to determine the structure:

*X-RAY DIFFRACTION*

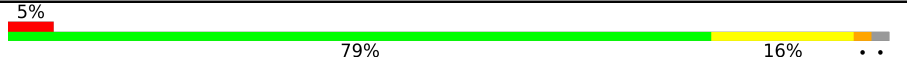
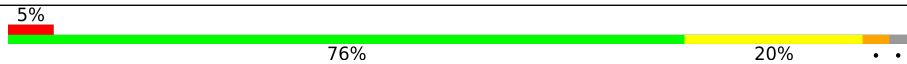
The reported resolution of this entry is 2.25 Å.

Percentile scores (ranging between 0-100) for global validation metrics of the entry are shown in the following graphic. The table shows the number of entries on which the scores are based.



Metric	Whole archive (#Entries)	Similar resolution (#Entries, resolution range(Å))
$R_{free}$	130704	1377 (2.26-2.26)
Clashscore	141614	1487 (2.26-2.26)
Ramachandran outliers	138981	1449 (2.26-2.26)
Sidechain outliers	138945	1450 (2.26-2.26)
RSRZ outliers	127900	1356 (2.26-2.26)

The table below summarises the geometric issues observed across the polymeric chains and their fit to the electron density. The red, orange, yellow and green segments of the lower bar indicate the fraction of residues that contain outliers for  $\geq 3$ , 2, 1 and 0 types of geometric quality criteria respectively. A grey segment represents the fraction of residues that are not modelled. The numeric value for each fraction is indicated below the corresponding segment, with a dot representing fractions  $\leq 5\%$ . The upper red bar (where present) indicates the fraction of residues that have poor fit to the electron density. The numeric value is given above the bar.

Mol	Chain	Length	Quality of chain
1	A	188	
1	B	188	

## 2 Entry composition [i](#)

There are 3 unique types of molecules in this entry. The entry contains 3173 atoms, of which 0 are hydrogens and 0 are deuteriums.

In the tables below, the ZeroOcc column contains the number of atoms modelled with zero occupancy, the AltConf column contains the number of residues with at least one atom in alternate conformation and the Trace column contains the number of residues modelled with at most 2 atoms.

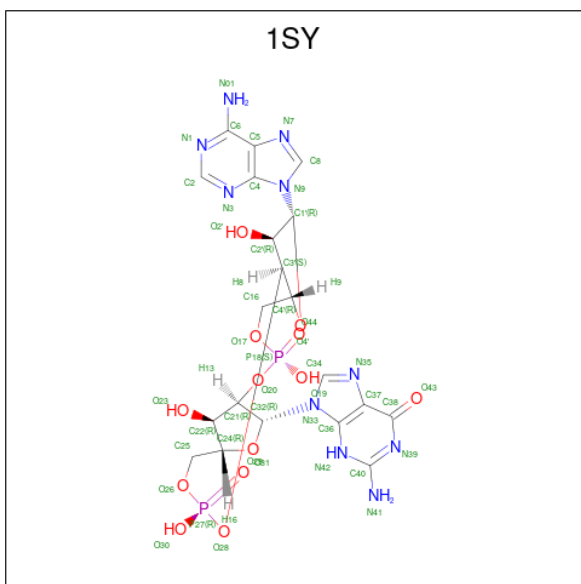
- Molecule 1 is a protein called Stimulator of interferon genes protein.

Mol	Chain	Residues	Atoms					ZeroOcc	AltConf	Trace
			Total	C	N	O	S			
1	A	184	Total 1479	C 928	N 261	O 284	S 6	0	0	0
1	B	184	Total 1479	C 928	N 261	O 284	S 6	0	0	0

There are 2 discrepancies between the modelled and reference sequences:

Chain	Residue	Modelled	Actual	Comment	Reference
A	154	SER	-	expression tag	UNP Q86WV6
B	154	SER	-	expression tag	UNP Q86WV6

- Molecule 2 is cGAMP (three-letter code: 1SY) (formula: C<sub>20</sub>H<sub>24</sub>N<sub>10</sub>O<sub>13</sub>P<sub>2</sub>).



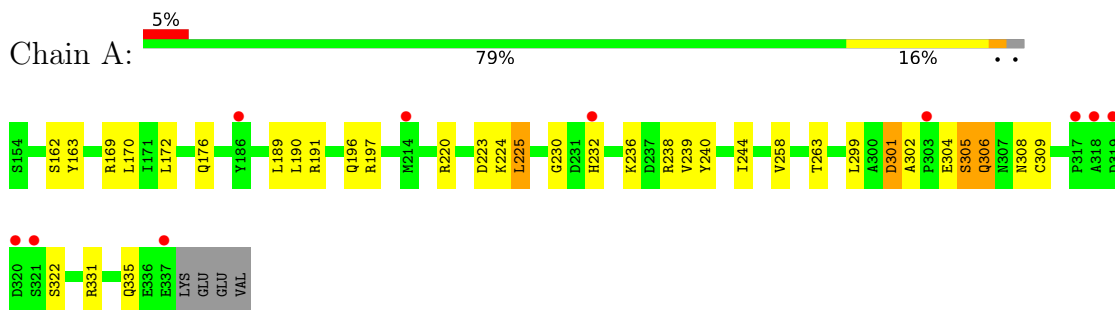
- Molecule 3 is water.

<b>Mol</b>	<b>Chain</b>	<b>Residues</b>	<b>Atoms</b>		<b>ZeroOcc</b>	<b>AltConf</b>
3	A	67	Total 67	O 67	0	0
3	B	58	Total 58	O 58	0	0

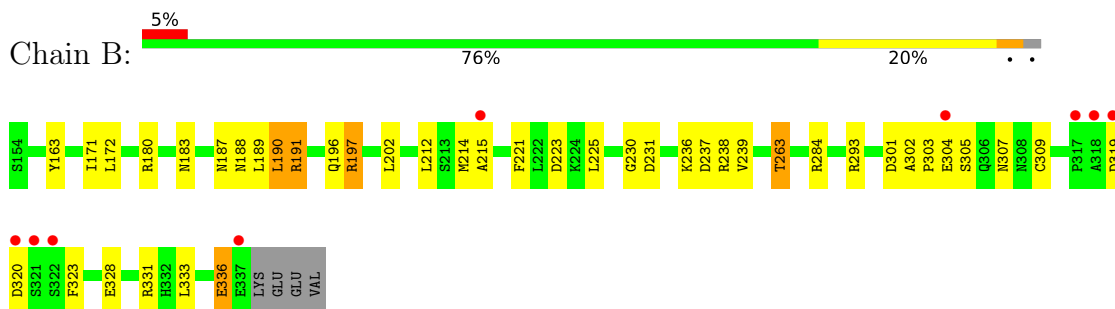
### 3 Residue-property plots [i](#)

These plots are drawn for all protein, RNA, DNA and oligosaccharide chains in the entry. The first graphic for a chain summarises the proportions of the various outlier classes displayed in the second graphic. The second graphic shows the sequence view annotated by issues in geometry and electron density. Residues are color-coded according to the number of geometric quality criteria for which they contain at least one outlier: green = 0, yellow = 1, orange = 2 and red = 3 or more. A red dot above a residue indicates a poor fit to the electron density ( $RSRZ > 2$ ). Stretches of 2 or more consecutive residues without any outlier are shown as a green connector. Residues present in the sample, but not in the model, are shown in grey.

- Molecule 1: Stimulator of interferon genes protein



- Molecule 1: Stimulator of interferon genes protein



## 4 Data and refinement statistics i

Property	Value	Source
Space group	P 1	Depositor
Cell constants a, b, c, $\alpha$ , $\beta$ , $\gamma$	36.50Å 59.21Å 59.20Å 83.98° 85.83° 85.87°	Depositor
Resolution (Å)	31.87 – 2.25 31.85 – 2.25	Depositor EDS
% Data completeness (in resolution range)	97.5 (31.87-2.25) 97.5 (31.85-2.25)	Depositor EDS
$R_{merge}$	(Not available)	Depositor
$R_{sym}$	(Not available)	Depositor
$\langle I/\sigma(I) \rangle$ <sup>1</sup>	4.62 (at 2.24Å)	Xtrriage
Refinement program	REFMAC 5.7.0032	Depositor
R, $R_{free}$	0.186 , 0.215 0.195 , 0.219	Depositor DCC
$R_{free}$ test set	1162 reflections (5.14%)	wwPDB-VP
Wilson B-factor (Å <sup>2</sup> )	23.6	Xtrriage
Anisotropy	0.039	Xtrriage
Bulk solvent $k_{sol}$ (e/Å <sup>3</sup> ), $B_{sol}$ (Å <sup>2</sup> )	0.33 , 20.2	EDS
L-test for twinning <sup>2</sup>	$\langle  L  \rangle = 0.50$ , $\langle L^2 \rangle = 0.33$	Xtrriage
Estimated twinning fraction	0.487 for -h,-l,-k	Xtrriage
$F_o, F_c$ correlation	0.94	EDS
Total number of atoms	3173	wwPDB-VP
Average B, all atoms (Å <sup>2</sup> )	35.0	wwPDB-VP

Xtrriage's analysis on translational NCS is as follows: *The largest off-origin peak in the Patterson function is 7.28% of the height of the origin peak. No significant pseudotranslation is detected.*

<sup>1</sup>Intensities estimated from amplitudes.

<sup>2</sup>Theoretical values of  $\langle |L| \rangle$ ,  $\langle L^2 \rangle$  for acentric reflections are 0.5, 0.333 respectively for untwinned datasets, and 0.375, 0.2 for perfectly twinned datasets.

## 5 Model quality [i](#)

### 5.1 Standard geometry [i](#)

Bond lengths and bond angles in the following residue types are not validated in this section: 1SY

The Z score for a bond length (or angle) is the number of standard deviations the observed value is removed from the expected value. A bond length (or angle) with  $|Z| > 5$  is considered an outlier worth inspection. RMSZ is the root-mean-square of all Z scores of the bond lengths (or angles).

Mol	Chain	Bond lengths		Bond angles	
		RMSZ	# Z  >5	RMSZ	# Z  >5
1	A	1.02	2/1508 (0.1%)	0.93	4/2045 (0.2%)
1	B	1.05	1/1508 (0.1%)	0.92	3/2045 (0.1%)
All	All	1.04	3/3016 (0.1%)	0.92	7/4090 (0.2%)

Chiral center outliers are detected by calculating the chiral volume of a chiral center and verifying if the center is modelled as a planar moiety or with the opposite hand. A planarity outlier is detected by checking planarity of atoms in a peptide group, atoms in a mainchain group or atoms of a sidechain that are expected to be planar.

Mol	Chain	#Chirality outliers	#Planarity outliers
1	B	0	1

All (3) bond length outliers are listed below:

Mol	Chain	Res	Type	Atoms	Z	Observed(Å)	Ideal(Å)
1	B	309	CYS	CB-SG	-5.71	1.72	1.81
1	A	309	CYS	CB-SG	-5.59	1.72	1.81
1	A	240	TYR	CG-CD1	-5.42	1.32	1.39

All (7) bond angle outliers are listed below:

Mol	Chain	Res	Type	Atoms	Z	Observed(°)	Ideal(°)
1	A	305	SER	CB-CA-C	7.75	124.83	110.10
1	A	306	GLN	N-CA-C	-6.48	93.50	111.00
1	B	284	ARG	NE-CZ-NH2	-6.14	117.23	120.30
1	B	223	ASP	CB-CG-OD2	-5.55	113.31	118.30
1	A	223	ASP	CB-CG-OD2	-5.25	113.58	118.30
1	B	263	THR	OG1-CB-CG2	-5.16	98.14	110.00
1	A	197	ARG	NE-CZ-NH1	5.11	122.86	120.30

There are no chirality outliers.

All (1) planarity outliers are listed below:

Mol	Chain	Res	Type	Group
1	B	304	GLU	Peptide

## 5.2 Too-close contacts [i](#)

In the following table, the Non-H and H(model) columns list the number of non-hydrogen atoms and hydrogen atoms in the chain respectively. The H(added) column lists the number of hydrogen atoms added and optimized by MolProbity. The Clashes column lists the number of clashes within the asymmetric unit, whereas Symm-Clashes lists symmetry-related clashes.

Mol	Chain	Non-H	H(model)	H(added)	Clashes	Symm-Clashes
1	A	1479	0	1442	20	0
1	B	1479	0	1442	27	0
2	A	90	0	44	4	0
3	A	67	0	0	1	0
3	B	58	0	0	4	0
All	All	3173	0	2928	44	0

The all-atom clashscore is defined as the number of clashes found per 1000 atoms (including hydrogen atoms). The all-atom clashscore for this structure is 7.

All (44) close contacts within the same asymmetric unit are listed below, sorted by their clash magnitude.

Atom-1	Atom-2	Interatomic distance (Å)	Clash overlap (Å)
1:B:196:GLN:O	1:B:197:ARG:HB2	1.89	0.72
1:A:169:ARG:HA	1:A:304:GLU:HG2	1.81	0.62
1:B:331:ARG:HD2	3:B:457:HOH:O	1.99	0.61
1:A:305:SER:HA	3:A:566:HOH:O	2.03	0.59
1:A:305:SER:HB3	1:A:308:ASN:HB2	1.84	0.58
1:B:196:GLN:O	1:B:197:ARG:CB	2.52	0.58
1:B:188:ASN:HB3	1:B:191:ARG:HG3	1.89	0.54
1:B:323:PHE:CZ	1:B:328:GLU:HG3	2.43	0.53
1:B:230:GLY:O	1:B:238:ARG:N	2.41	0.52
2:A:401[B]:1SY:O2'	1:B:263:THR:HB	2.10	0.52
1:B:301:ASP:N	1:B:301:ASP:OD1	2.44	0.51
1:B:180:ARG:HD2	3:B:442:HOH:O	2.11	0.50
2:A:401[A]:1SY:H16	1:B:163:TYR:HA	1.92	0.50
1:B:301:ASP:HA	3:B:448:HOH:O	2.11	0.49
1:A:169:ARG:HB2	1:A:304:GLU:HG2	1.95	0.49

*Continued on next page...*



Continued from previous page...

Atom-1	Atom-2	Interatomic distance (Å)	Clash overlap (Å)
1:B:231:ASP:OD1	1:B:236:LYS:HA	2.13	0.49
1:A:163:TYR:HA	2:A:401[B]:1SY:H16	1.94	0.48
1:B:189:LEU:HD23	1:B:189:LEU:HA	1.76	0.47
1:A:305:SER:CB	1:A:308:ASN:HB2	2.45	0.46
1:A:225:LEU:HD13	1:A:244:ILE:HD11	1.97	0.46
1:B:214:MET:O	1:B:215:ALA:HB3	2.16	0.46
1:A:263:THR:HB	2:A:401[A]:1SY:O2'	2.16	0.46
1:B:323:PHE:HZ	1:B:328:GLU:HG3	1.80	0.45
1:B:180:ARG:NH2	3:B:446:HOH:O	2.50	0.45
1:A:236:LYS:HD2	1:B:221:PHE:CZ	2.52	0.45
1:B:305:SER:HB3	1:B:307:ASN:H	1.80	0.45
1:B:302:ALA:HA	1:B:303:PRO:HD3	1.77	0.44
1:A:224:LYS:NZ	1:B:237:ASP:OD2	2.48	0.44
1:B:183:ASN:HA	1:B:187:ASN:HB2	2.00	0.43
1:B:231:ASP:OD1	1:B:237:ASP:N	2.39	0.43
1:B:189:LEU:HB3	1:B:190:LEU:HD13	2.00	0.43
1:A:172:LEU:HB3	1:A:305:SER:HB2	2.01	0.43
1:B:171:ILE:HG13	1:B:172:LEU:N	2.33	0.42
1:B:197:ARG:NH1	1:B:336:GLU:HG2	2.33	0.42
1:A:176:GLN:HG3	1:A:196:GLN:OE1	2.19	0.42
1:A:299:LEU:O	1:A:306:GLN:HB2	2.19	0.42
1:A:302:ALA:C	1:A:304:GLU:H	2.23	0.42
1:A:230:GLY:O	1:A:238:ARG:N	2.49	0.41
1:B:212:LEU:O	1:B:214:MET:O	2.37	0.41
1:A:239:VAL:HB	1:B:239:VAL:HB	2.03	0.41
1:A:301:ASP:OD1	1:A:301:ASP:N	2.54	0.41
1:A:189:LEU:HD23	1:A:189:LEU:HA	1.91	0.40
1:A:170:LEU:HD13	1:A:232:HIS:CE1	2.56	0.40
1:A:225:LEU:CD1	1:A:244:ILE:HD11	2.52	0.40

There are no symmetry-related clashes.

## 5.3 Torsion angles [i](#)

### 5.3.1 Protein backbone [i](#)

In the following table, the Percentiles column shows the percent Ramachandran outliers of the chain as a percentile score with respect to all X-ray entries followed by that with respect to entries of similar resolution.

The Analysed column shows the number of residues for which the backbone conformation was analysed, and the total number of residues.

Mol	Chain	Analysed	Favoured	Allowed	Outliers	Percentiles	
1	A	182/188 (97%)	169 (93%)	13 (7%)	0	100	100
1	B	182/188 (97%)	172 (94%)	9 (5%)	1 (0%)	29	29
All	All	364/376 (97%)	341 (94%)	22 (6%)	1 (0%)	41	46

All (1) Ramachandran outliers are listed below:

Mol	Chain	Res	Type
1	B	197	ARG

### 5.3.2 Protein sidechains [i](#)

In the following table, the Percentiles column shows the percent sidechain outliers of the chain as a percentile score with respect to all X-ray entries followed by that with respect to entries of similar resolution.

The Analysed column shows the number of residues for which the sidechain conformation was analysed, and the total number of residues.

Mol	Chain	Analysed	Rotameric	Outliers	Percentiles	
1	A	160/164 (98%)	150 (94%)	10 (6%)	18	17
1	B	160/164 (98%)	151 (94%)	9 (6%)	21	21
All	All	320/328 (98%)	301 (94%)	19 (6%)	19	19

All (19) residues with a non-rotameric sidechain are listed below:

Mol	Chain	Res	Type
1	A	162	SER
1	A	190	LEU
1	A	191	ARG
1	A	220	ARG
1	A	225	LEU
1	A	258	VAL
1	A	301	ASP
1	A	322	SER
1	A	331	ARG
1	A	335	GLN
1	B	190	LEU
1	B	191	ARG
1	B	202	LEU
1	B	225	LEU
1	B	293	ARG

*Continued on next page...*

*Continued from previous page...*

Mol	Chain	Res	Type
1	B	319	ASP
1	B	320	ASP
1	B	333	LEU
1	B	336	GLU

Sometimes sidechains can be flipped to improve hydrogen bonding and reduce clashes. All (1) such sidechains are listed below:

Mol	Chain	Res	Type
1	A	232	HIS

### 5.3.3 RNA [i](#)

There are no RNA molecules in this entry.

## 5.4 Non-standard residues in protein, DNA, RNA chains [i](#)

There are no non-standard protein/DNA/RNA residues in this entry.

## 5.5 Carbohydrates [i](#)

There are no monosaccharides in this entry.

## 5.6 Ligand geometry [i](#)

2 ligands are modelled in this entry.

In the following table, the Counts columns list the number of bonds (or angles) for which Mogul statistics could be retrieved, the number of bonds (or angles) that are observed in the model and the number of bonds (or angles) that are defined in the Chemical Component Dictionary. The Link column lists molecule types, if any, to which the group is linked. The Z score for a bond length (or angle) is the number of standard deviations the observed value is removed from the expected value. A bond length (or angle) with  $|Z| > 2$  is considered an outlier worth inspection. RMSZ is the root-mean-square of all Z scores of the bond lengths (or angles).

Mol	Type	Chain	Res	Link	Bond lengths			Bond angles		
					Counts	RMSZ	$\# Z  > 2$	Counts	RMSZ	$\# Z  > 2$
2	1SY	A	401[B]	-	41,51,51	2.70	14 (34%)	51,80,80	2.10	15 (29%)
2	1SY	A	401[A]	-	41,51,51	3.02	14 (34%)	51,80,80	2.13	14 (27%)

In the following table, the Chirals column lists the number of chiral outliers, the number of chiral centers analysed, the number of these observed in the model and the number defined in the Chemical Component Dictionary. Similar counts are reported in the Torsion and Rings columns. '-' means no outliers of that kind were identified.

Mol	Type	Chain	Res	Link	Chirals	Torsions	Rings
2	1SY	A	401[B]	-	-	3/22/62/62	0/6/7/7
2	1SY	A	401[A]	-	-	3/22/62/62	0/6/7/7

All (28) bond length outliers are listed below:

Mol	Chain	Res	Type	Atoms	Z	Observed(Å)	Ideal(Å)
2	A	401[A]	1SY	C2'-C1'	-11.17	1.36	1.53
2	A	401[B]	1SY	C2'-C1'	-9.62	1.39	1.53
2	A	401[A]	1SY	C37-C38	-7.44	1.32	1.47
2	A	401[B]	1SY	C37-C38	-6.82	1.34	1.47
2	A	401[B]	1SY	O23-C22	6.17	1.57	1.43
2	A	401[A]	1SY	O4'-C1'	5.79	1.49	1.41
2	A	401[A]	1SY	O23-C22	5.52	1.56	1.43
2	A	401[A]	1SY	O2'-C2'	5.47	1.55	1.43
2	A	401[B]	1SY	C40-N39	4.72	1.44	1.33
2	A	401[B]	1SY	O4'-C1'	3.81	1.46	1.41
2	A	401[A]	1SY	O4'-C4'	-3.57	1.37	1.45
2	A	401[A]	1SY	C40-N39	3.46	1.41	1.33
2	A	401[B]	1SY	C5-C4	-3.43	1.31	1.40
2	A	401[B]	1SY	O2'-C2'	3.12	1.50	1.43
2	A	401[A]	1SY	C5-C4	-3.03	1.32	1.40
2	A	401[B]	1SY	C6-C5	-2.95	1.32	1.43
2	A	401[A]	1SY	C6-C5	-2.91	1.32	1.43
2	A	401[B]	1SY	C22-C24	-2.75	1.46	1.53
2	A	401[A]	1SY	C2-N1	2.72	1.39	1.33
2	A	401[A]	1SY	C40-N42	-2.66	1.31	1.37
2	A	401[B]	1SY	O4'-C4'	-2.61	1.39	1.45
2	A	401[A]	1SY	P27-O28	2.42	1.66	1.60
2	A	401[A]	1SY	C2-N3	2.41	1.36	1.32
2	A	401[B]	1SY	C2-N1	2.31	1.38	1.33
2	A	401[B]	1SY	C40-N42	-2.26	1.32	1.37
2	A	401[B]	1SY	C5-N7	-2.11	1.32	1.39
2	A	401[B]	1SY	P18-O19	-2.04	1.45	1.55
2	A	401[A]	1SY	C5-N7	-2.02	1.32	1.39

All (29) bond angle outliers are listed below:

Mol	Chain	Res	Type	Atoms	Z	Observed(°)	Ideal(°)
2	A	401[A]	1SY	C1'-N9-C4	-8.83	111.13	126.64
2	A	401[B]	1SY	C1'-N9-C4	-7.57	113.33	126.64
2	A	401[B]	1SY	N3-C2-N1	-6.33	118.78	128.68
2	A	401[A]	1SY	N3-C2-N1	-5.70	119.76	128.68
2	A	401[B]	1SY	N41-C40-N39	4.18	127.87	119.73
2	A	401[B]	1SY	O31-C32-C21	-3.54	100.45	106.59
2	A	401[A]	1SY	N41-C40-N39	3.53	126.61	119.73
2	A	401[A]	1SY	O31-C32-C21	-3.25	100.95	106.59
2	A	401[B]	1SY	O20-C21-C22	-3.23	99.96	111.68
2	A	401[A]	1SY	O4'-C4'-C3'	-3.23	97.96	104.87
2	A	401[B]	1SY	C34-N35-C37	3.01	108.73	102.99
2	A	401[A]	1SY	O20-C21-C22	-2.65	102.06	111.68
2	A	401[B]	1SY	O23-C22-C21	2.65	118.70	111.17
2	A	401[A]	1SY	C34-N35-C37	2.51	107.76	102.99
2	A	401[B]	1SY	O30-P27-O28	2.46	116.50	106.78
2	A	401[B]	1SY	C22-C21-C32	2.46	107.51	102.89
2	A	401[A]	1SY	O23-C22-C21	2.38	117.93	111.17
2	A	401[A]	1SY	C25-C24-C22	-2.34	106.42	115.18
2	A	401[B]	1SY	O4'-C4'-C3'	-2.33	99.87	104.87
2	A	401[A]	1SY	O30-P27-O28	2.33	115.97	106.78
2	A	401[A]	1SY	C22-C21-C32	2.28	107.17	102.89
2	A	401[B]	1SY	C37-C38-N39	-2.27	114.67	117.85
2	A	401[A]	1SY	O20-P18-O44	-2.24	101.08	109.47
2	A	401[B]	1SY	C25-C24-C22	-2.10	107.32	115.18
2	A	401[A]	1SY	O28-C3'-C2'	-2.06	104.22	111.68
2	A	401[B]	1SY	N41-C40-N42	-2.06	112.35	116.72
2	A	401[B]	1SY	O20-P18-O44	-2.04	101.80	109.47
2	A	401[A]	1SY	C4-C5-N7	-2.03	107.29	109.40
2	A	401[B]	1SY	O28-P27-O29	-2.00	101.95	109.47

There are no chirality outliers.

All (6) torsion outliers are listed below:

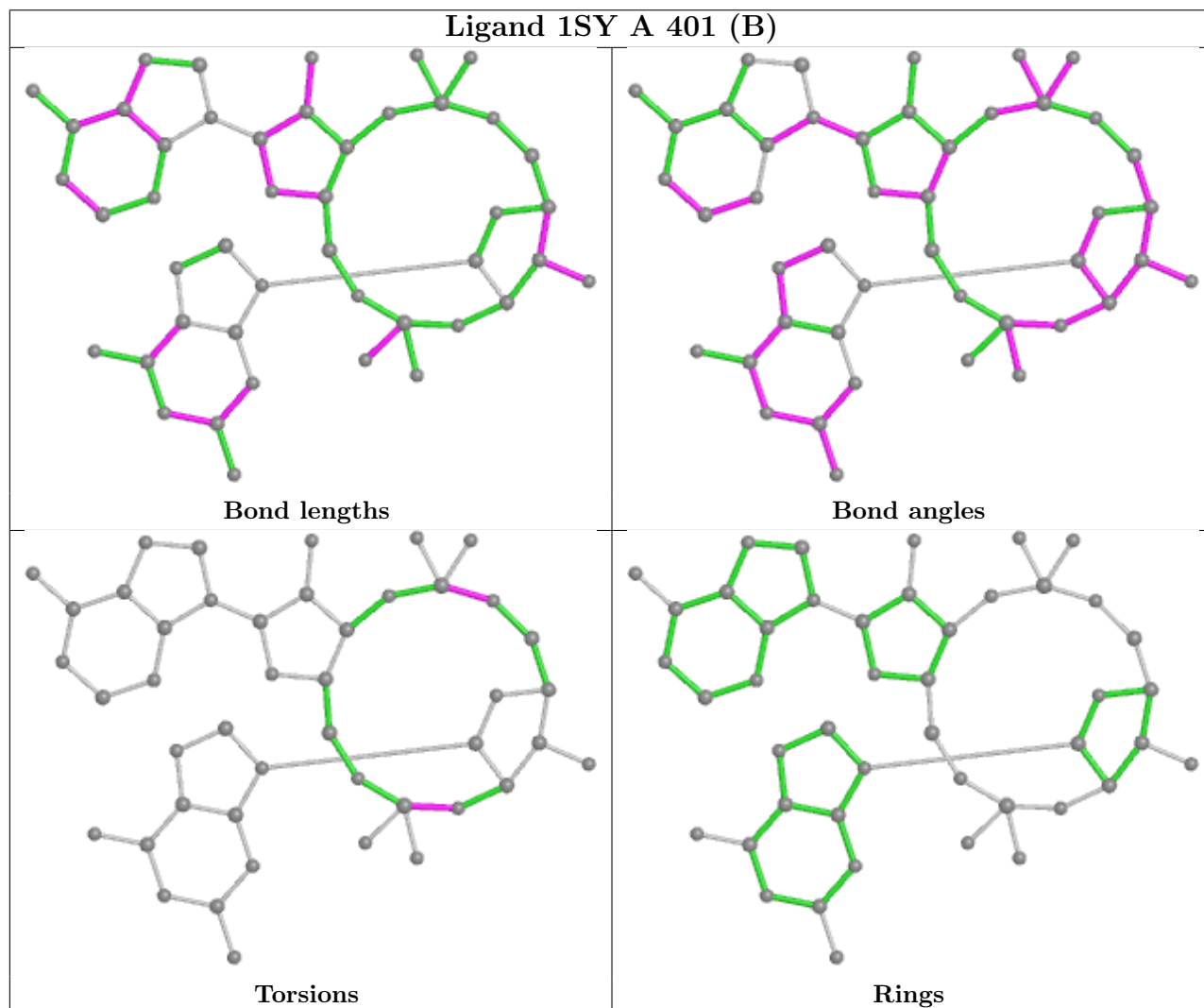
Mol	Chain	Res	Type	Atoms
2	A	401[B]	1SY	C25-O26-P27-O29
2	A	401[B]	1SY	C21-O20-P18-O17
2	A	401[A]	1SY	C21-O20-P18-O17
2	A	401[B]	1SY	C25-O26-P27-O30
2	A	401[A]	1SY	C4'-C3'-O28-P27
2	A	401[A]	1SY	C2'-C3'-O28-P27

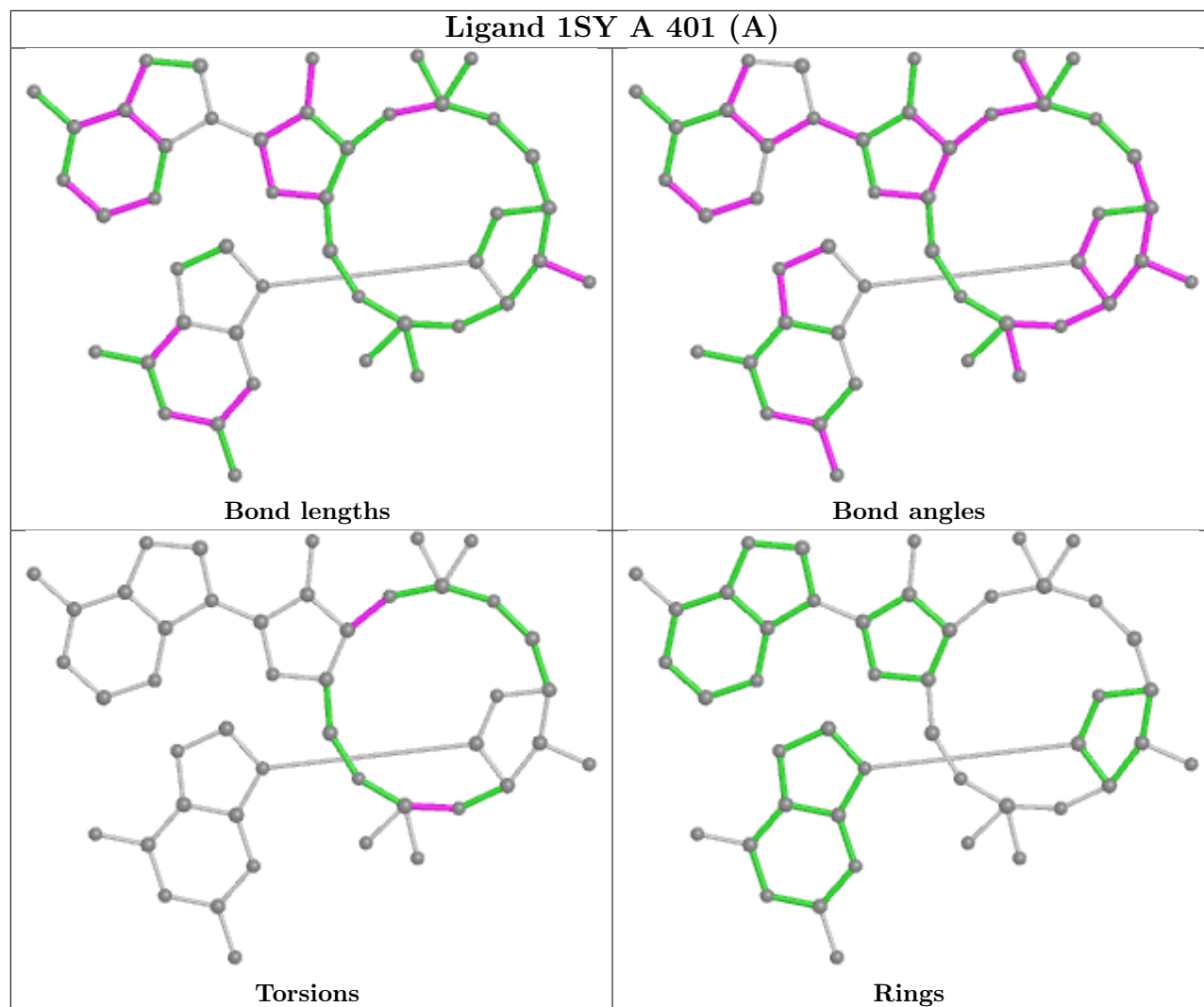
There are no ring outliers.

2 monomers are involved in 4 short contacts:

Mol	Chain	Res	Type	Clashes	Symm-Clashes
2	A	401[B]	1SY	2	0
2	A	401[A]	1SY	2	0

The following is a two-dimensional graphical depiction of Mogul quality analysis of bond lengths, bond angles, torsion angles, and ring geometry for all instances of the Ligand of Interest. In addition, ligands with molecular weight > 250 and outliers as shown on the validation Tables will also be included. For torsion angles, if less than 5% of the Mogul distribution of torsion angles is within 10 degrees of the torsion angle in question, then that torsion angle is considered an outlier. Any bond that is central to one or more torsion angles identified as an outlier by Mogul will be highlighted in the graph. For rings, the root-mean-square deviation (RMSD) between the ring in question and similar rings identified by Mogul is calculated over all ring torsion angles. If the average RMSD is greater than 60 degrees and the minimal RMSD between the ring in question and any Mogul-identified rings is also greater than 60 degrees, then that ring is considered an outlier. The outliers are highlighted in purple. The color gray indicates Mogul did not find sufficient equivalents in the CSD to analyse the geometry.





## 5.7 Other polymers [\(i\)](#)

There are no such residues in this entry.

## 5.8 Polymer linkage issues [\(i\)](#)

There are no chain breaks in this entry.

## 6 Fit of model and data [i](#)

### 6.1 Protein, DNA and RNA chains [i](#)

In the following table, the column labelled ‘#RSRZ > 2’ contains the number (and percentage) of RSRZ outliers, followed by percent RSRZ outliers for the chain as percentile scores relative to all X-ray entries and entries of similar resolution. The OWAB column contains the minimum, median, 95<sup>th</sup> percentile and maximum values of the occupancy-weighted average B-factor per residue. The column labelled ‘Q < 0.9’ lists the number of (and percentage) of residues with an average occupancy less than 0.9.

Mol	Chain	Analysed	<RSRZ>	#RSRZ>2	OWAB(Å <sup>2</sup> )	Q<0.9
1	A	184/188 (97%)	0.06	10 (5%) 25 28	9, 31, 76, 123	0
1	B	184/188 (97%)	0.10	9 (4%) 29 32	8, 30, 75, 116	0
All	All	368/376 (97%)	0.08	19 (5%) 27 30	8, 30, 76, 123	0

All (19) RSRZ outliers are listed below:

Mol	Chain	Res	Type	RSRZ
1	B	337	GLU	5.5
1	A	319	ASP	5.3
1	B	319	ASP	4.4
1	A	318	ALA	4.0
1	B	318	ALA	3.8
1	A	317	PRO	3.6
1	A	214	MET	3.3
1	B	317	PRO	3.2
1	A	321	SER	3.2
1	A	337	GLU	3.2
1	A	320	ASP	3.0
1	B	215	ALA	2.9
1	B	304	GLU	2.5
1	B	322	SER	2.5
1	A	232	HIS	2.5
1	B	320	ASP	2.3
1	B	321	SER	2.3
1	A	303	PRO	2.1
1	A	186	TYR	2.1

### 6.2 Non-standard residues in protein, DNA, RNA chains [i](#)

There are no non-standard protein/DNA/RNA residues in this entry.



### 6.3 Carbohydrates [i](#)

There are no monosaccharides in this entry.

### 6.4 Ligands [i](#)

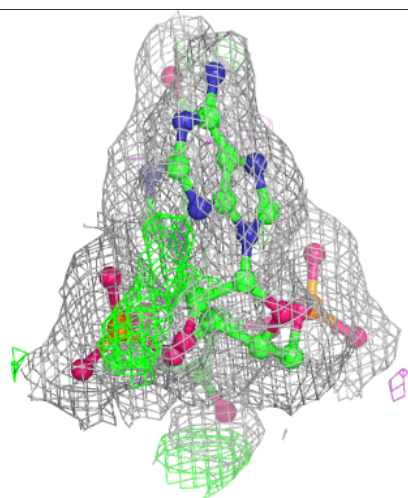
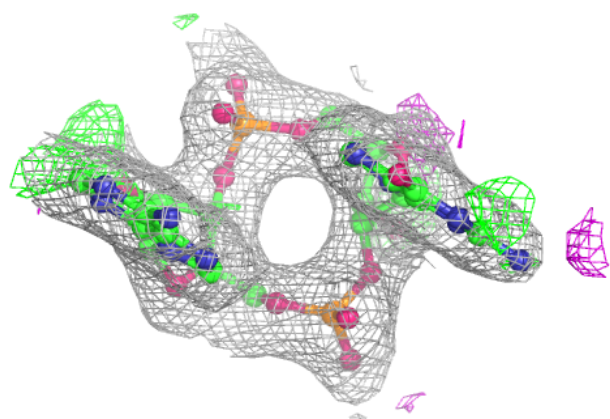
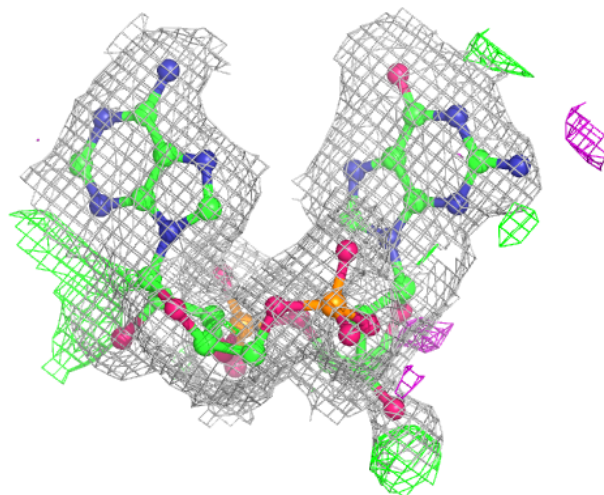
In the following table, the Atoms column lists the number of modelled atoms in the group and the number defined in the chemical component dictionary. The B-factors column lists the minimum, median, 95<sup>th</sup> percentile and maximum values of B factors of atoms in the group. The column labelled 'Q< 0.9' lists the number of atoms with occupancy less than 0.9.

Mol	Type	Chain	Res	Atoms	RSCC	RSR	B-factors(Å <sup>2</sup> )	Q<0.9
2	1SY	A	401[A]	45/45	0.97	0.14	9,14,22,25	45
2	1SY	A	401[B]	45/45	0.97	0.14	8,14,22,25	45

The following is a graphical depiction of the model fit to experimental electron density of all instances of the Ligand of Interest. In addition, ligands with molecular weight > 250 and outliers as shown on the geometry validation Tables will also be included. Each fit is shown from different orientation to approximate a three-dimensional view.

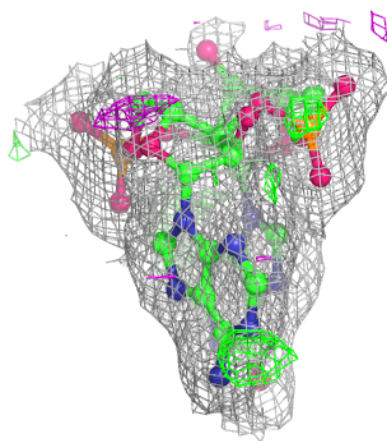
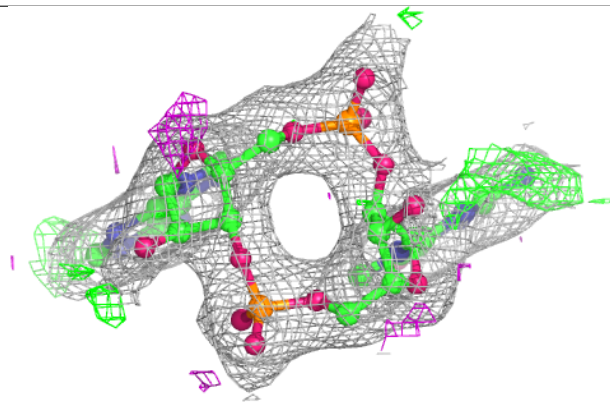
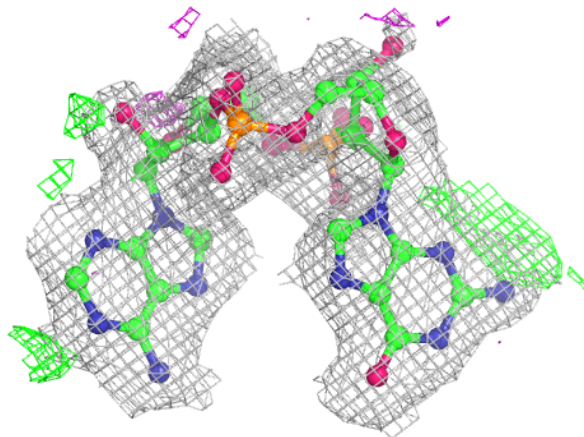
**Electron density around 1SY A 401 (A):**

$2mF_o-DF_c$  (at 0.7 rmsd) in gray  
 $mF_o-DF_c$  (at 3 rmsd) in purple (negative)  
and green (positive)



**Electron density around 1SY A 401 (B):**

$2mF_o-DF_c$  (at 0.7 rmsd) in gray  
 $mF_o-DF_c$  (at 3 rmsd) in purple (negative)  
and green (positive)



## 6.5 Other polymers [i](#)

There are no such residues in this entry.