



# Full wwPDB X-ray Structure Validation Report ⓘ

Jan 6, 2024 – 11:31 pm GMT

PDB ID : 5M05  
Title : Chicken smooth muscle myosin motor domain co-crystallized with the specific CK-571 inhibitor, MgADP form  
Authors : Sirigu, S.; Hartman, J.; Houdusse, A.  
Deposited on : 2016-10-03  
Resolution : 2.67 Å(reported)

This is a Full wwPDB X-ray Structure Validation Report for a publicly released PDB entry.

We welcome your comments at [validation@mail.wwpdb.org](mailto:validation@mail.wwpdb.org)

A user guide is available at

<https://www.wwpdb.org/validation/2017/XrayValidationReportHelp>

with specific help available everywhere you see the ⓘ symbol.

The types of validation reports are described at

<http://www.wwpdb.org/validation/2017/FAQs#types>.

---

The following versions of software and data (see [references ⓘ](#)) were used in the production of this report:

MolProbity : 4.02b-467  
Mogul : 1.8.4, CSD as541be (2020)  
Xtriage (Phenix) : 1.13  
EDS : 2.36  
buster-report : 1.1.7 (2018)  
Percentile statistics : 20191225.v01 (using entries in the PDB archive December 25th 2019)  
Refmac : 5.8.0158  
CCP4 : 7.0.044 (Gargrove)  
Ideal geometry (proteins) : Engh & Huber (2001)  
Ideal geometry (DNA, RNA) : Parkinson et al. (1996)  
Validation Pipeline (wwPDB-VP) : 2.36

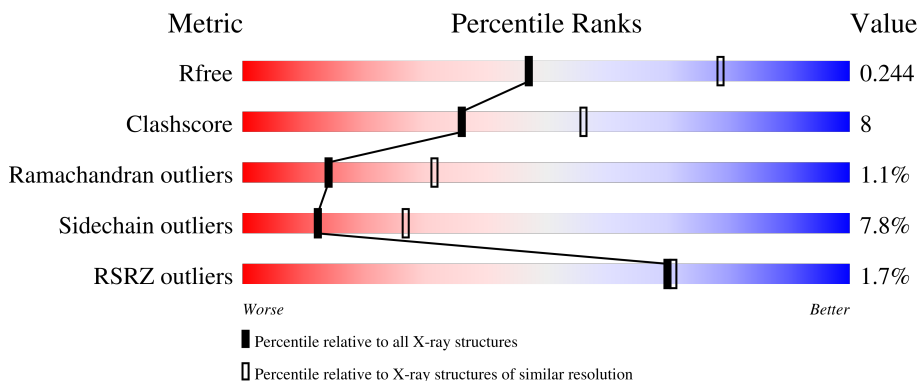
# 1 Overall quality at a glance

The following experimental techniques were used to determine the structure:

*X-RAY DIFFRACTION*

The reported resolution of this entry is 2.67 Å.

Percentile scores (ranging between 0-100) for global validation metrics of the entry are shown in the following graphic. The table shows the number of entries on which the scores are based.



Metric	Whole archive (#Entries)	Similar resolution (#Entries, resolution range(Å))
$R_{free}$	130704	3863 (2.70-2.66)
Clashscore	141614	4210 (2.70-2.66)
Ramachandran outliers	138981	4141 (2.70-2.66)
Sidechain outliers	138945	4141 (2.70-2.66)
RSRZ outliers	127900	3780 (2.70-2.66)

The table below summarises the geometric issues observed across the polymeric chains and their fit to the electron density. The red, orange, yellow and green segments of the lower bar indicate the fraction of residues that contain outliers for  $\geq 3$ , 2, 1 and 0 types of geometric quality criteria respectively. A grey segment represents the fraction of residues that are not modelled. The numeric value for each fraction is indicated below the corresponding segment, with a dot representing fractions  $\leq 5\%$ . The upper red bar (where present) indicates the fraction of residues that have poor fit to the electron density. The numeric value is given above the bar.

Mol	Chain	Length	Quality of chain
1	A	800	

## 2 Entry composition

There are 5 unique types of molecules in this entry. The entry contains 5781 atoms, of which 0 are hydrogens and 0 are deuteriums.

In the tables below, the ZeroOcc column contains the number of atoms modelled with zero occupancy, the AltConf column contains the number of residues with at least one atom in alternate conformation and the Trace column contains the number of residues modelled with at most 2 atoms.

- Molecule 1 is a protein called Myosin-11.

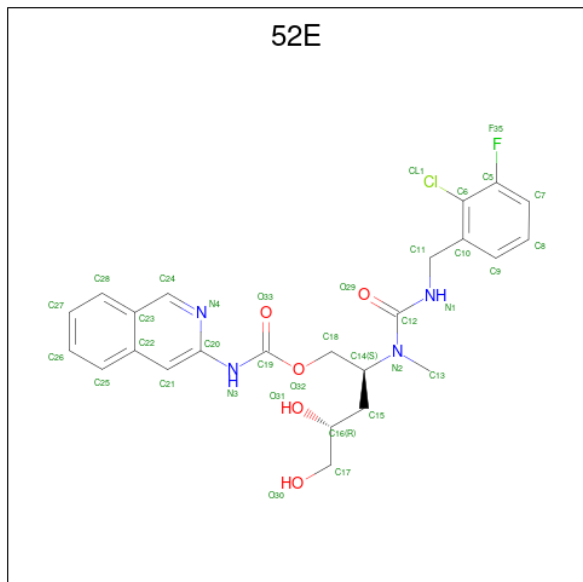
Mol	Chain	Residues	Atoms					ZeroOcc	AltConf	Trace
			Total	C	N	O	S			
1	A	708	5664	3605	965	1066	28	0	0	0

There are 25 discrepancies between the modelled and reference sequences:

Chain	Residue	Modelled	Actual	Comment	Reference
A	2	ALA	SER	conflict	UNP P10587
A	205	ARG	LYS	conflict	UNP P10587
A	206	THR	ASP	conflict	UNP P10587
A	207	PRO	THR	conflict	UNP P10587
A	208	ALA	SER	conflict	UNP P10587
A	209	SER	ILE	conflict	UNP P10587
A	210	LEU	THR	conflict	UNP P10587
A	211	LYS	GLN	conflict	UNP P10587
A	212	VAL	GLY	conflict	UNP P10587
A	213	HIS	PRO	conflict	UNP P10587
A	214	LEU	SER	conflict	UNP P10587
A	216	PRO	SER	conflict	UNP P10587
A	411	ALA	ARG	conflict	UNP P10587
A	412	ALA	ASP	conflict	UNP P10587
A	415	GLU	GLN	conflict	UNP P10587
A	791	GLY	-	expression tag	UNP P10587
A	792	SER	-	expression tag	UNP P10587
A	793	ASP	-	expression tag	UNP P10587
A	794	TYR	-	expression tag	UNP P10587
A	795	LYS	-	expression tag	UNP P10587
A	796	ASP	-	expression tag	UNP P10587
A	797	ASP	-	expression tag	UNP P10587
A	798	ASP	-	expression tag	UNP P10587
A	799	ASP	-	expression tag	UNP P10587
A	800	LYS	-	expression tag	UNP P10587

- Molecule 2 is 4-[[[(2-chloro-3-fluorobenzyl)carbamoyl](methyl)amino]-3,4-dideoxy-

5-O-(isoquinolin-3-ylcarbamoyl)-D-erythro-pentitol (three-letter code: 52E) (formula:  $C_{24}H_{26}ClFN_4O_5$ ).



Mol	Chain	Residues	Atoms					ZeroOcc	AltConf	
			Total	C	Cl	F	N			O
2	A	1	35	24	1	1	4	5	0	0

- Molecule 3 is MAGNESIUM ION (three-letter code: MG) (formula: Mg).

Mol	Chain	Residues	Atoms		ZeroOcc	AltConf
			Total	Mg		
3	A	1	1	1	0	0

- Molecule 4 is ADENOSINE-5'-DIPHOSPHATE (three-letter code: ADP) (formula:  $C_{10}H_{15}N_5O_{10}P_2$ ).



Mol	Chain	Residues	Atoms					ZeroOcc	AltConf
			Total	C	N	O	P		
4	A	1	27	10	5	10	2	0	0

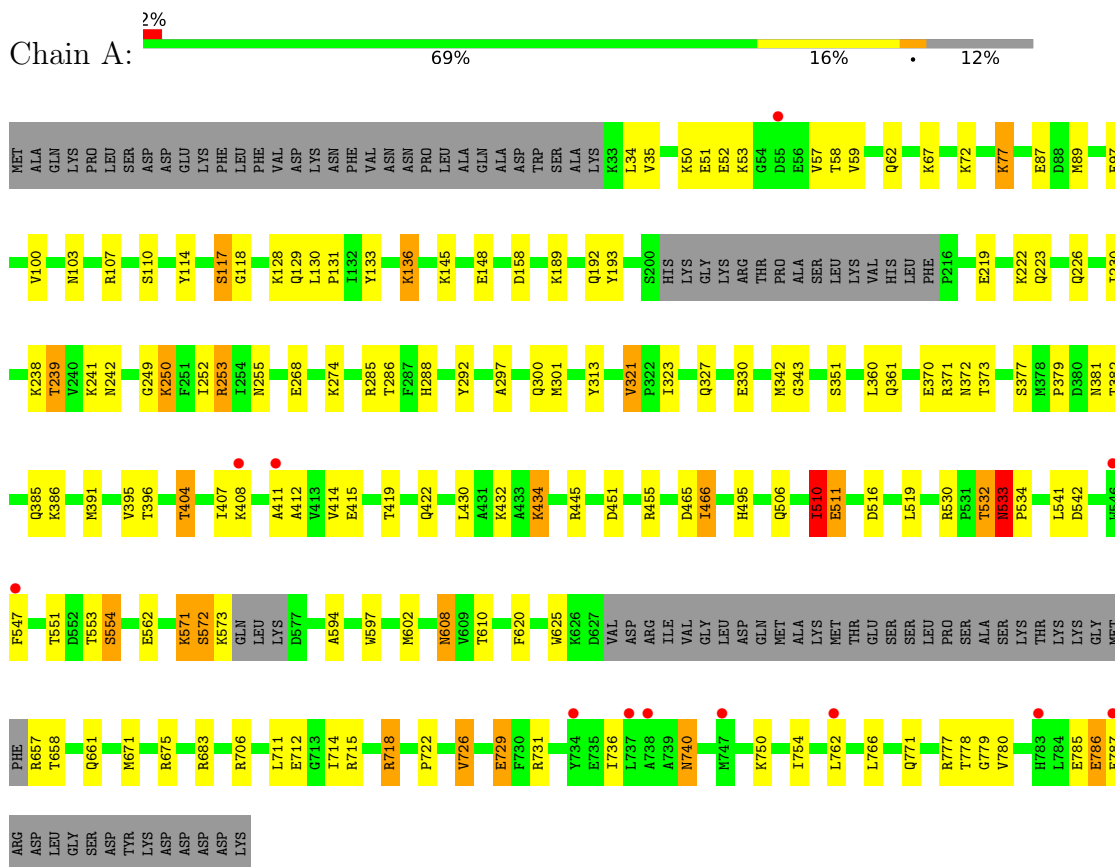
- Molecule 5 is water.

Mol	Chain	Residues	Atoms		ZeroOcc	AltConf
5	A	54	Total	O	0	0
			54	54		

### 3 Residue-property plots [i](#)

These plots are drawn for all protein, RNA, DNA and oligosaccharide chains in the entry. The first graphic for a chain summarises the proportions of the various outlier classes displayed in the second graphic. The second graphic shows the sequence view annotated by issues in geometry and electron density. Residues are color-coded according to the number of geometric quality criteria for which they contain at least one outlier: green = 0, yellow = 1, orange = 2 and red = 3 or more. A red dot above a residue indicates a poor fit to the electron density ( $RSRZ > 2$ ). Stretches of 2 or more consecutive residues without any outlier are shown as a green connector. Residues present in the sample, but not in the model, are shown in grey.

- Molecule 1: Myosin-11



## 4 Data and refinement statistics

Property	Value	Source
Space group	P 21 21 2	Depositor
Cell constants a, b, c, $\alpha$ , $\beta$ , $\gamma$	73.19Å 202.97Å 67.56Å 90.00° 90.00° 90.00°	Depositor
Resolution (Å)	49.68 – 2.67 49.68 – 2.67	Depositor EDS
% Data completeness (in resolution range)	99.0 (49.68-2.67) 99.0 (49.68-2.67)	Depositor EDS
$R_{merge}$	0.10	Depositor
$R_{sym}$	(Not available)	Depositor
$\langle I/\sigma(I) \rangle$ <sup>1</sup>	2.10 (at 2.69Å)	Xtrriage
Refinement program	PHENIX 1.8.2_1309	Depositor
R, $R_{free}$	0.185 , 0.244 0.185 , 0.244	Depositor DCC
$R_{free}$ test set	1451 reflections (5.00%)	wwPDB-VP
Wilson B-factor (Å <sup>2</sup> )	58.5	Xtrriage
Anisotropy	0.305	Xtrriage
Bulk solvent $k_{sol}$ (e/Å <sup>3</sup> ), $B_{sol}$ (Å <sup>2</sup> )	0.34 , 43.5	EDS
L-test for twinning <sup>2</sup>	$\langle  L  \rangle = 0.49$ , $\langle L^2 \rangle = 0.33$	Xtrriage
Estimated twinning fraction	No twinning to report.	Xtrriage
$F_o, F_c$ correlation	0.95	EDS
Total number of atoms	5781	wwPDB-VP
Average B, all atoms (Å <sup>2</sup> )	32.0	wwPDB-VP

Xtrriage's analysis on translational NCS is as follows: *The largest off-origin peak in the Patterson function is 4.13% of the height of the origin peak. No significant pseudotranslation is detected.*

<sup>1</sup>Intensities estimated from amplitudes.

<sup>2</sup>Theoretical values of  $\langle |L| \rangle$ ,  $\langle L^2 \rangle$  for acentric reflections are 0.5, 0.333 respectively for untwinned datasets, and 0.375, 0.2 for perfectly twinned datasets.

## 5 Model quality [i](#)

### 5.1 Standard geometry [i](#)

Bond lengths and bond angles in the following residue types are not validated in this section: ADP, MG, 52E

The Z score for a bond length (or angle) is the number of standard deviations the observed value is removed from the expected value. A bond length (or angle) with  $|Z| > 5$  is considered an outlier worth inspection. RMSZ is the root-mean-square of all Z scores of the bond lengths (or angles).

Mol	Chain	Bond lengths		Bond angles	
		RMSZ	# Z  >5	RMSZ	# Z  >5
1	A	0.43	0/5768	0.59	1/7781 (0.0%)

Chiral center outliers are detected by calculating the chiral volume of a chiral center and verifying if the center is modelled as a planar moiety or with the opposite hand. A planarity outlier is detected by checking planarity of atoms in a peptide group, atoms in a mainchain group or atoms of a sidechain that are expected to be planar.

Mol	Chain	#Chirality outliers	#Planarity outliers
1	A	0	1

There are no bond length outliers.

All (1) bond angle outliers are listed below:

Mol	Chain	Res	Type	Atoms	Z	Observed( $^{\circ}$ )	Ideal( $^{\circ}$ )
1	A	533	ASN	C-N-CD	5.90	140.79	128.40

There are no chirality outliers.

All (1) planarity outliers are listed below:

Mol	Chain	Res	Type	Group
1	A	510	ILE	Peptide

### 5.2 Too-close contacts [i](#)

In the following table, the Non-H and H(model) columns list the number of non-hydrogen atoms and hydrogen atoms in the chain respectively. The H(added) column lists the number of hydrogen atoms added and optimized by MolProbity. The Clashes column lists the number of clashes within the asymmetric unit, whereas Symm-Clashes lists symmetry-related clashes.



Mol	Chain	Non-H	H(model)	H(added)	Clashes	Symm-Clashes
1	A	5664	0	5623	90	1
2	A	35	0	0	3	0
3	A	1	0	0	0	0
4	A	27	0	12	0	0
5	A	54	0	0	3	0
All	All	5781	0	5635	91	1

The all-atom clashscore is defined as the number of clashes found per 1000 atoms (including hydrogen atoms). The all-atom clashscore for this structure is 8.

All (91) close contacts within the same asymmetric unit are listed below, sorted by their clash magnitude.

Atom-1	Atom-2	Interatomic distance (Å)	Clash overlap (Å)
1:A:718:ARG:HH11	1:A:718:ARG:HG3	1.24	1.01
1:A:510:ILE:HA	1:A:511:GLU:HB2	1.55	0.88
1:A:718:ARG:HG3	1:A:718:ARG:NH1	1.93	0.81
1:A:107:ARG:NH1	1:A:114:TYR:O	2.15	0.80
1:A:77:LYS:H	1:A:77:LYS:HZ2	1.30	0.77
1:A:718:ARG:HH11	1:A:718:ARG:CG	1.98	0.75
1:A:726:VAL:HG23	1:A:729:GLU:HB2	1.70	0.74
1:A:239:THR:HG22	1:A:242:ASN:H	1.54	0.72
1:A:274:LYS:HG2	1:A:432:LYS:HB3	1.72	0.71
2:A:901:52E:O33	5:A:1001:HOH:O	2.08	0.70
1:A:77:LYS:H	1:A:77:LYS:NZ	1.93	0.67
1:A:238:LYS:HD2	1:A:323:ILE:HG12	1.76	0.67
1:A:407:ILE:HB	1:A:414:VAL:HG13	1.80	0.63
1:A:327:GLN:HB2	1:A:330:GLU:HG3	1.80	0.63
1:A:571:LYS:NZ	1:A:573:LYS:NZ	2.47	0.63
1:A:740:ASN:N	1:A:740:ASN:OD1	2.32	0.62
1:A:510:ILE:CA	1:A:511:GLU:HB2	2.27	0.62
1:A:50:LYS:NZ	1:A:67:LYS:HE3	2.17	0.59
1:A:57:VAL:HG23	1:A:72:LYS:HG2	1.86	0.57
1:A:51:GLU:HB3	1:A:58:THR:HB	1.86	0.57
1:A:52:GLU:HG2	1:A:57:VAL:HG22	1.86	0.57
1:A:89:MET:HB2	2:A:901:52E:CL1	2.42	0.57
1:A:117:SER:O	1:A:117:SER:OG	2.20	0.56
1:A:239:THR:HG23	1:A:241:LYS:H	1.70	0.56
1:A:712:GLU:HG3	1:A:715:ARG:NH2	2.21	0.56
1:A:381:ASN:OD1	1:A:385:GLN:NE2	2.38	0.56
1:A:89:MET:HE1	1:A:100:VAL:HA	1.90	0.54
1:A:551:THR:H	1:A:554:SER:HB3	1.73	0.53
1:A:50:LYS:HZ1	1:A:67:LYS:HE3	1.74	0.53

*Continued on next page...*

*Continued from previous page...*

Atom-1	Atom-2	Interatomic distance (Å)	Clash overlap (Å)
1:A:285:ARG:HD2	1:A:321:VAL:O	2.08	0.52
1:A:158:ASP:OD2	1:A:193:TYR:OH	2.28	0.51
1:A:145:LYS:HG3	1:A:148:GLU:OE2	2.11	0.51
1:A:533:ASN:HB3	1:A:534:PRO:CD	2.41	0.50
1:A:118:GLY:HA3	2:A:901:52E:O29	2.12	0.50
1:A:430:LEU:O	1:A:434:LYS:HB2	2.11	0.50
1:A:58:THR:HG21	1:A:67:LYS:HE2	1.93	0.50
1:A:97:GLU:HG2	1:A:711:LEU:HD22	1.94	0.49
1:A:571:LYS:HZ1	1:A:573:LYS:NZ	2.10	0.49
1:A:495:HIS:ND1	1:A:516:ASP:OD1	2.45	0.49
1:A:657:ARG:N	1:A:661:GLN:OE1	2.47	0.48
1:A:671:MET:O	1:A:675:ARG:HG3	2.13	0.48
1:A:571:LYS:NZ	1:A:573:LYS:HZ3	2.11	0.48
1:A:133:TYR:CG	1:A:189:LYS:HE3	2.48	0.48
1:A:434:LYS:HG2	1:A:625:TRP:HZ2	1.78	0.48
1:A:297:ALA:HA	1:A:301:MET:HE3	1.95	0.48
1:A:718:ARG:HD2	1:A:718:ARG:HA	1.64	0.48
1:A:419:THR:OG1	1:A:422:GLN:HG3	2.14	0.48
1:A:571:LYS:NZ	1:A:573:LYS:HZ1	2.12	0.48
1:A:722:PRO:HG3	1:A:778:THR:HB	1.96	0.48
1:A:288:HIS:HB3	1:A:292:TYR:CZ	2.49	0.47
1:A:87:GLU:HG2	1:A:107:ARG:NH2	2.29	0.47
1:A:219:GLU:O	1:A:223:GLN:HG3	2.16	0.46
1:A:77:LYS:HZ2	1:A:77:LYS:N	2.07	0.46
1:A:714:ILE:O	1:A:718:ARG:HG2	2.16	0.46
1:A:239:THR:HG21	5:A:1032:HOH:O	2.16	0.46
1:A:89:MET:CE	1:A:100:VAL:HA	2.46	0.45
1:A:391:MET:CE	1:A:434:LYS:HZ3	2.29	0.45
1:A:253:ARG:HD3	1:A:255:ASN:OD1	2.16	0.45
1:A:370:GLU:HB2	1:A:373:THR:OG1	2.16	0.45
1:A:594:ALA:HA	1:A:597:TRP:CE2	2.52	0.44
1:A:136:LYS:H	1:A:136:LYS:HG3	1.56	0.44
1:A:766:LEU:HB3	1:A:780:VAL:HG21	1.99	0.44
1:A:351:SER:HB3	1:A:620:PHE:CG	2.53	0.44
1:A:658:THR:HG23	1:A:661:GLN:NE2	2.33	0.43
1:A:130:LEU:HA	1:A:131:PRO:HD3	1.75	0.43
1:A:766:LEU:HA	1:A:777:ARG:HG3	2.01	0.43
1:A:249:GLY:HA3	1:A:466:ILE:HG12	2.00	0.43
1:A:250:LYS:HE3	1:A:465:ASP:HB3	2.01	0.43
1:A:602:MET:HE2	1:A:658:THR:HG22	2.01	0.43
1:A:404:THR:HG22	1:A:415:GLU:HG2	2.01	0.42

*Continued on next page...*

Continued from previous page...

Atom-1	Atom-2	Interatomic distance (Å)	Clash overlap (Å)
1:A:250:LYS:HD2	1:A:252:ILE:HD11	2.00	0.42
1:A:532:THR:HB	1:A:533:ASN:H	1.54	0.42
1:A:103:ASN:O	1:A:107:ARG:HG3	2.19	0.42
1:A:222:LYS:O	1:A:226:GLN:HG2	2.20	0.42
1:A:530:ARG:HE	1:A:533:ASN:HB2	1.85	0.42
1:A:786:GLU:HB2	1:A:787:GLU:H	1.64	0.42
1:A:571:LYS:HE3	1:A:571:LYS:HB2	1.85	0.41
1:A:571:LYS:HZ3	1:A:573:LYS:HZ1	1.68	0.41
1:A:230:ILE:HD12	1:A:342:MET:HE3	2.01	0.41
1:A:377:SER:O	1:A:379:PRO:HD3	2.21	0.41
1:A:542:ASP:OD2	1:A:661:GLN:HG3	2.20	0.41
1:A:608:ASN:N	1:A:608:ASN:HD22	2.19	0.41
1:A:313:TYR:CD1	1:A:360:LEU:HB3	2.56	0.41
1:A:778:THR:HA	1:A:779:GLY:HA2	1.69	0.41
1:A:391:MET:HE2	1:A:434:LYS:NZ	2.36	0.41
1:A:34:LEU:HD23	1:A:34:LEU:HA	1.92	0.40
1:A:382:THR:HG22	1:A:386:LYS:HE3	2.03	0.40
1:A:750:LYS:O	1:A:754:ILE:HG13	2.20	0.40
1:A:343:GLY:O	1:A:445:ARG:NH2	2.54	0.40
1:A:361:GLN:HG2	5:A:1026:HOH:O	2.20	0.40
1:A:432:LYS:HB2	1:A:432:LYS:HE3	1.93	0.40

All (1) symmetry-related close contacts are listed below. The label for Atom-2 includes the symmetry operator and encoded unit-cell translations to be applied.

Atom-1	Atom-2	Interatomic distance (Å)	Clash overlap (Å)
1:A:372:ASN:OD1	1:A:706:ARG:NH1[4_455]	2.17	0.03

## 5.3 Torsion angles [i](#)

### 5.3.1 Protein backbone [i](#)

In the following table, the Percentiles column shows the percent Ramachandran outliers of the chain as a percentile score with respect to all X-ray entries followed by that with respect to entries of similar resolution.

The Analysed column shows the number of residues for which the backbone conformation was analysed, and the total number of residues.

Mol	Chain	Analysed	Favoured	Allowed	Outliers	Percentiles
1	A	700/800 (88%)	661 (94%)	31 (4%)	8 (1%)	14 31

All (8) Ramachandran outliers are listed below:

Mol	Chain	Res	Type
1	A	53	LYS
1	A	511	GLU
1	A	533	ASN
1	A	411	ALA
1	A	412	ALA
1	A	510	ILE
1	A	572	SER
1	A	736	ILE

### 5.3.2 Protein sidechains [i](#)

In the following table, the Percentiles column shows the percent sidechain outliers of the chain as a percentile score with respect to all X-ray entries followed by that with respect to entries of similar resolution.

The Analysed column shows the number of residues for which the sidechain conformation was analysed, and the total number of residues.

Mol	Chain	Analysed	Rotameric	Outliers	Percentiles
1	A	612/702 (87%)	564 (92%)	48 (8%)	12 27

All (48) residues with a non-rotameric sidechain are listed below:

Mol	Chain	Res	Type
1	A	35	VAL
1	A	59	VAL
1	A	62	GLN
1	A	77	LYS
1	A	110	SER
1	A	117	SER
1	A	128	LYS
1	A	129	GLN
1	A	136	LYS
1	A	192	GLN
1	A	239	THR
1	A	250	LYS
1	A	253	ARG

*Continued on next page...*

*Continued from previous page...*

<b>Mol</b>	<b>Chain</b>	<b>Res</b>	<b>Type</b>
1	A	268	GLU
1	A	286	THR
1	A	300	GLN
1	A	321	VAL
1	A	371	ARG
1	A	395	VAL
1	A	396	THR
1	A	404	THR
1	A	408	LYS
1	A	434	LYS
1	A	451	ASP
1	A	455	ARG
1	A	466	ILE
1	A	506	GLN
1	A	519	LEU
1	A	532	THR
1	A	541	LEU
1	A	547	PHE
1	A	553	THR
1	A	554	SER
1	A	562	GLU
1	A	571	LYS
1	A	572	SER
1	A	608	ASN
1	A	610	THR
1	A	683	ARG
1	A	718	ARG
1	A	726	VAL
1	A	729	GLU
1	A	731	ARG
1	A	740	ASN
1	A	762	LEU
1	A	771	GLN
1	A	785	GLU
1	A	786	GLU

Sometimes sidechains can be flipped to improve hydrogen bonding and reduce clashes. All (1) such sidechains are listed below:

<b>Mol</b>	<b>Chain</b>	<b>Res</b>	<b>Type</b>
1	A	192	GLN

### 5.3.3 RNA [i](#)

There are no RNA molecules in this entry.

## 5.4 Non-standard residues in protein, DNA, RNA chains [i](#)

There are no non-standard protein/DNA/RNA residues in this entry.

## 5.5 Carbohydrates [i](#)

There are no monosaccharides in this entry.

## 5.6 Ligand geometry [i](#)

Of 3 ligands modelled in this entry, 1 is monoatomic - leaving 2 for Mogul analysis.

In the following table, the Counts columns list the number of bonds (or angles) for which Mogul statistics could be retrieved, the number of bonds (or angles) that are observed in the model and the number of bonds (or angles) that are defined in the Chemical Component Dictionary. The Link column lists molecule types, if any, to which the group is linked. The Z score for a bond length (or angle) is the number of standard deviations the observed value is removed from the expected value. A bond length (or angle) with  $|Z| > 2$  is considered an outlier worth inspection. RMSZ is the root-mean-square of all Z scores of the bond lengths (or angles).

Mol	Type	Chain	Res	Link	Bond lengths			Bond angles		
					Counts	RMSZ	# Z  > 2	Counts	RMSZ	# Z  > 2
4	ADP	A	903	3	24,29,29	0.98	1 (4%)	29,45,45	1.36	3 (10%)
2	52E	A	901	-	37,37,37	2.23	7 (18%)	43,50,50	1.75	7 (16%)

In the following table, the Chirals column lists the number of chiral outliers, the number of chiral centers analysed, the number of these observed in the model and the number defined in the Chemical Component Dictionary. Similar counts are reported in the Torsion and Rings columns. '-' means no outliers of that kind were identified.

Mol	Type	Chain	Res	Link	Chirals	Torsions	Rings
4	ADP	A	903	3	-	2/12/32/32	0/3/3/3
2	52E	A	901	-	-	12/28/28/28	0/3/3/3

All (8) bond length outliers are listed below:

Mol	Chain	Res	Type	Atoms	Z	Observed(Å)	Ideal(Å)
2	A	901	52E	C12-N2	10.73	1.49	1.37

*Continued on next page...*

Continued from previous page...

Mol	Chain	Res	Type	Atoms	Z	Observed(Å)	Ideal(Å)
2	A	901	52E	C19-N3	3.79	1.43	1.36
2	A	901	52E	C6-C5	2.89	1.42	1.38
2	A	901	52E	O32-C18	-2.83	1.38	1.45
2	A	901	52E	C12-N1	2.47	1.45	1.34
4	A	903	ADP	C5-C4	2.36	1.47	1.40
2	A	901	52E	C26-C25	2.32	1.42	1.36
2	A	901	52E	C23-C22	-2.19	1.37	1.42

All (10) bond angle outliers are listed below:

Mol	Chain	Res	Type	Atoms	Z	Observed(°)	Ideal(°)
2	A	901	52E	O32-C19-N3	6.47	119.89	109.32
2	A	901	52E	O32-C18-C14	4.09	117.58	108.36
2	A	901	52E	C9-C10-C6	3.54	119.94	117.43
4	A	903	ADP	C3'-C2'-C1'	3.30	105.95	100.98
2	A	901	52E	C20-N3-C19	-3.11	119.85	127.36
4	A	903	ADP	N3-C2-N1	-3.09	123.85	128.68
2	A	901	52E	O33-C19-N3	-2.81	119.99	126.11
4	A	903	ADP	O3B-PB-O2B	2.35	116.62	107.64
2	A	901	52E	O32-C19-O33	-2.21	120.02	124.25
2	A	901	52E	C10-C11-N1	2.20	117.67	113.03

There are no chirality outliers.

All (14) torsion outliers are listed below:

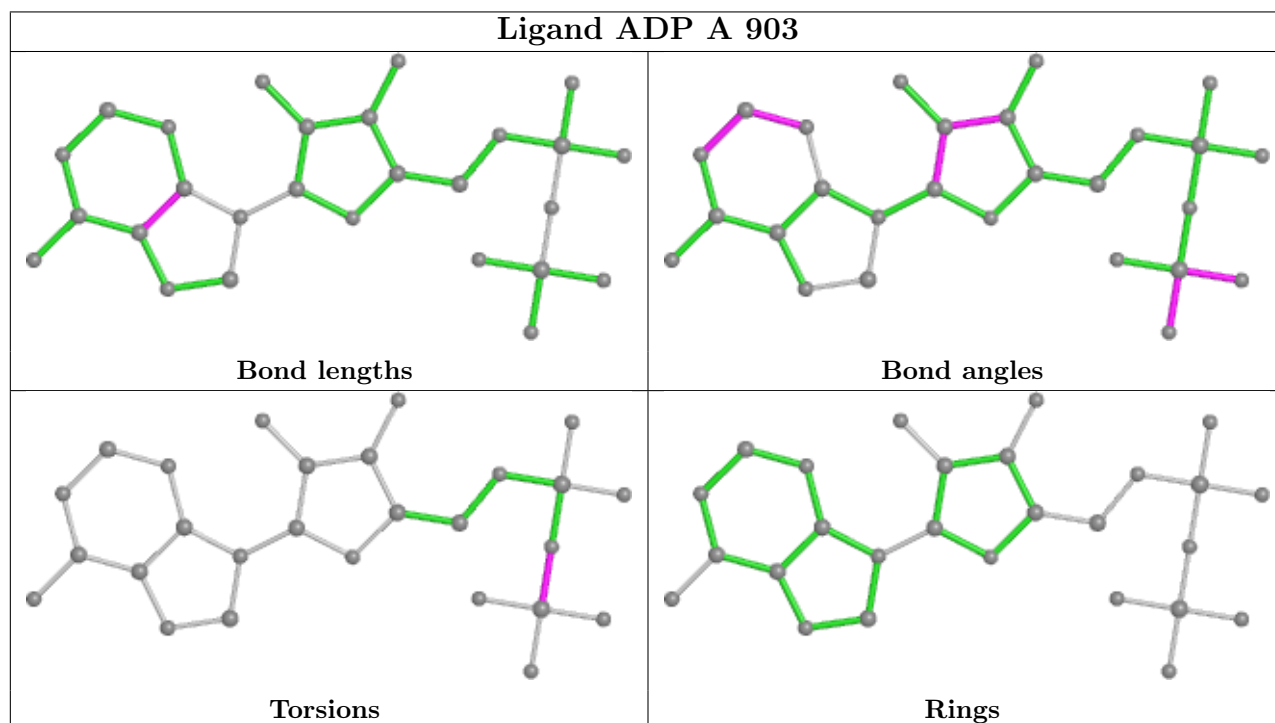
Mol	Chain	Res	Type	Atoms
2	A	901	52E	N4-C20-N3-C19
2	A	901	52E	C21-C20-N3-C19
2	A	901	52E	C14-C15-C16-C17
2	A	901	52E	C15-C14-C18-O32
2	A	901	52E	N2-C14-C18-O32
4	A	903	ADP	PA-O3A-PB-O2B
2	A	901	52E	N3-C19-O32-C18
2	A	901	52E	O33-C19-O32-C18
2	A	901	52E	O31-C16-C17-O30
2	A	901	52E	C14-C15-C16-O31
2	A	901	52E	C15-C16-C17-O30
2	A	901	52E	O32-C19-N3-C20
2	A	901	52E	O33-C19-N3-C20
4	A	903	ADP	PA-O3A-PB-O1B

There are no ring outliers.

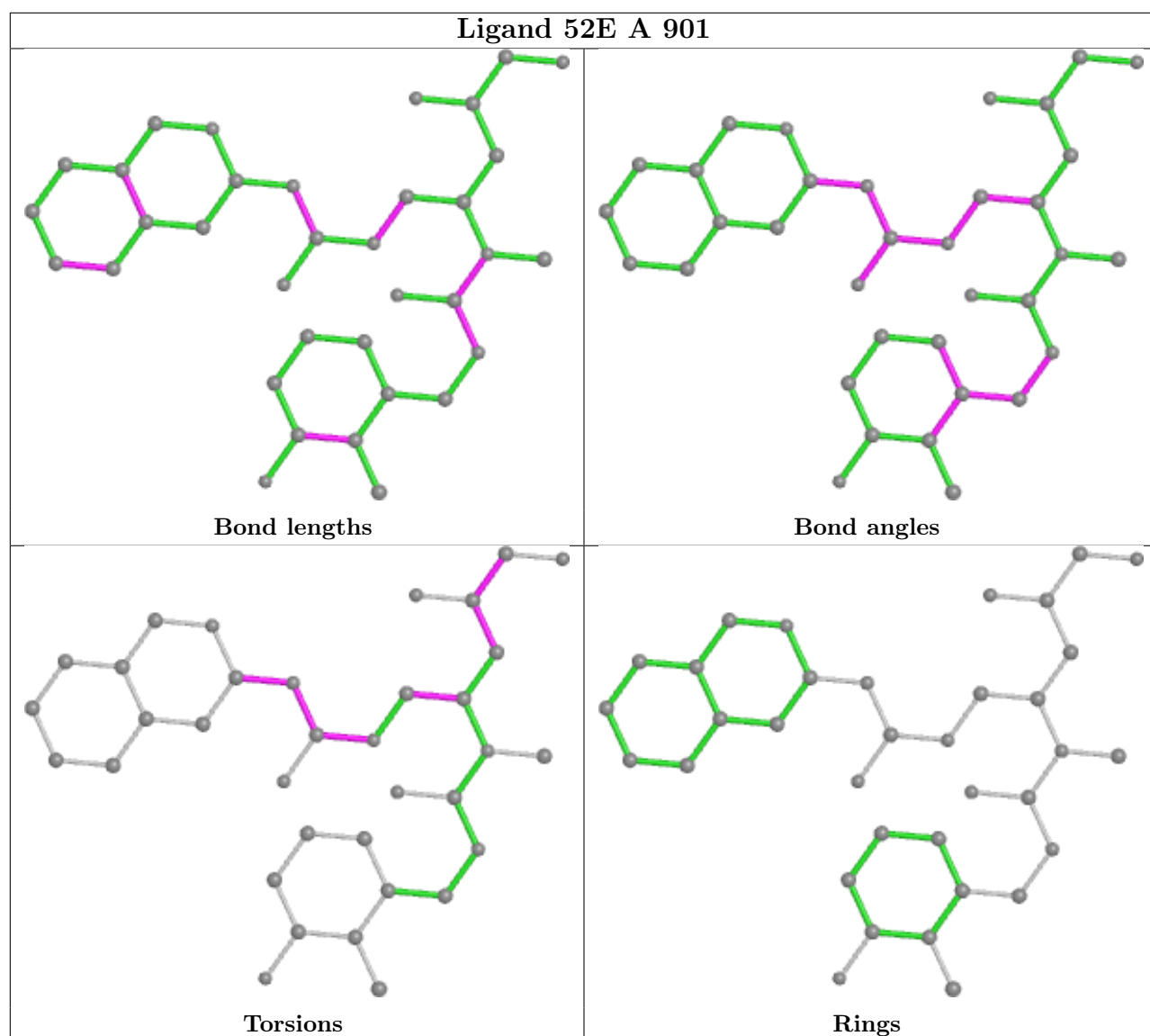
1 monomer is involved in 3 short contacts:

Mol	Chain	Res	Type	Clashes	Symm-Clashes
2	A	901	52E	3	0

The following is a two-dimensional graphical depiction of Mogul quality analysis of bond lengths, bond angles, torsion angles, and ring geometry for all instances of the Ligand of Interest. In addition, ligands with molecular weight > 250 and outliers as shown on the validation Tables will also be included. For torsion angles, if less than 5% of the Mogul distribution of torsion angles is within 10 degrees of the torsion angle in question, then that torsion angle is considered an outlier. Any bond that is central to one or more torsion angles identified as an outlier by Mogul will be highlighted in the graph. For rings, the root-mean-square deviation (RMSD) between the ring in question and similar rings identified by Mogul is calculated over all ring torsion angles. If the average RMSD is greater than 60 degrees and the minimal RMSD between the ring in question and any Mogul-identified rings is also greater than 60 degrees, then that ring is considered an outlier. The outliers are highlighted in purple. The color gray indicates Mogul did not find sufficient equivalents in the CSD to analyse the geometry.







## 5.7 Other polymers [i](#)

There are no such residues in this entry.

## 5.8 Polymer linkage issues [i](#)

There are no chain breaks in this entry.

## 6 Fit of model and data [i](#)

### 6.1 Protein, DNA and RNA chains [i](#)

In the following table, the column labelled ‘#RSRZ> 2’ contains the number (and percentage) of RSRZ outliers, followed by percent RSRZ outliers for the chain as percentile scores relative to all X-ray entries and entries of similar resolution. The OWAB column contains the minimum, median, 95<sup>th</sup> percentile and maximum values of the occupancy-weighted average B-factor per residue. The column labelled ‘Q< 0.9’ lists the number of (and percentage) of residues with an average occupancy less than 0.9.

Mol	Chain	Analysed	<RSRZ>	#RSRZ>2	OWAB(Å <sup>2</sup> )	Q<0.9
1	A	708/800 (88%)	-0.13	12 (1%) 70 71	11, 28, 65, 97	0

All (12) RSRZ outliers are listed below:

Mol	Chain	Res	Type	RSRZ
1	A	737	LEU	7.3
1	A	787	GLU	3.1
1	A	762	LEU	3.1
1	A	547	PHE	2.7
1	A	546	TRP	2.4
1	A	734	TYR	2.4
1	A	408	LYS	2.3
1	A	783	HIS	2.1
1	A	55	ASP	2.1
1	A	738	ALA	2.1
1	A	411	ALA	2.0
1	A	747	MET	2.0

### 6.2 Non-standard residues in protein, DNA, RNA chains [i](#)

There are no non-standard protein/DNA/RNA residues in this entry.

### 6.3 Carbohydrates [i](#)

There are no monosaccharides in this entry.

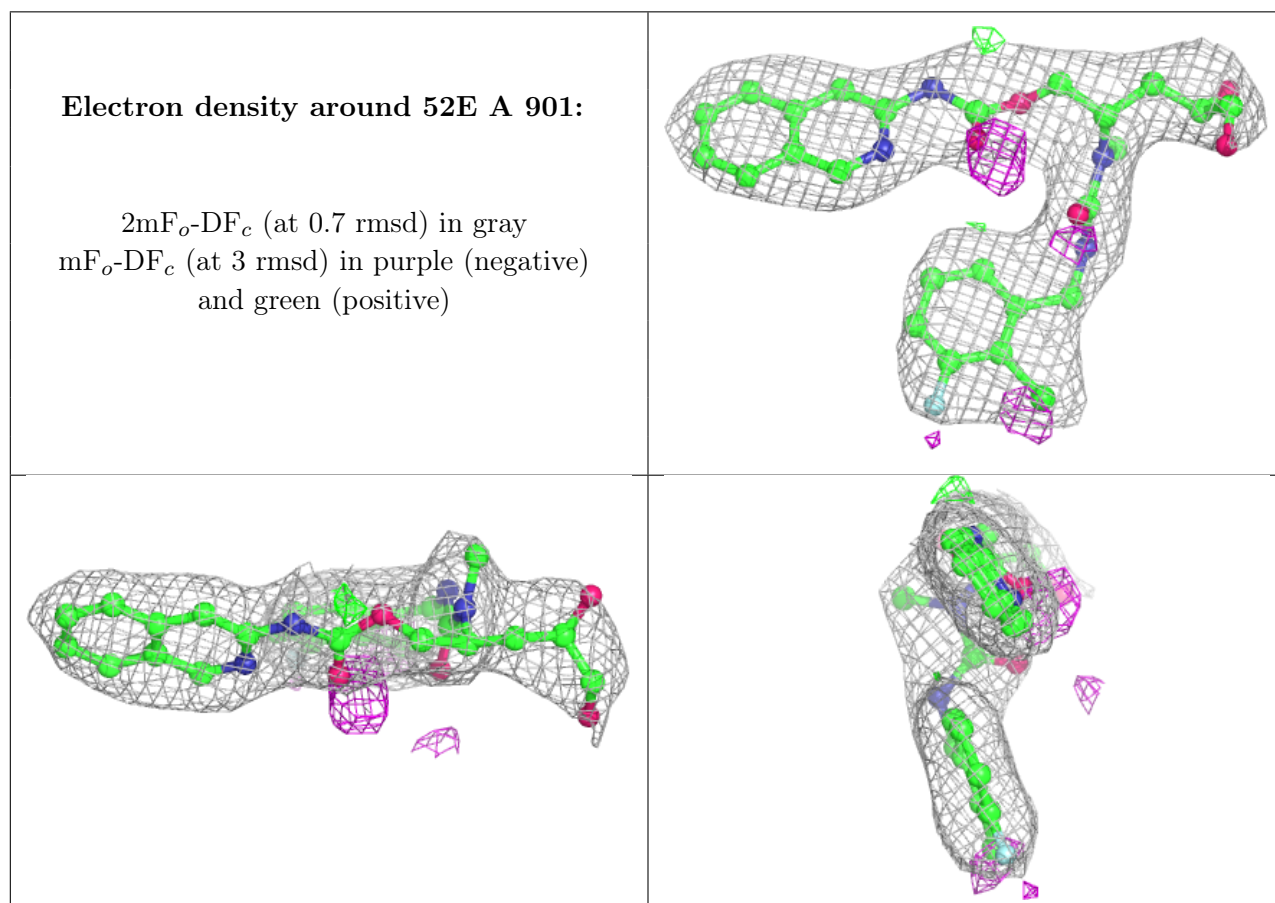
### 6.4 Ligands [i](#)

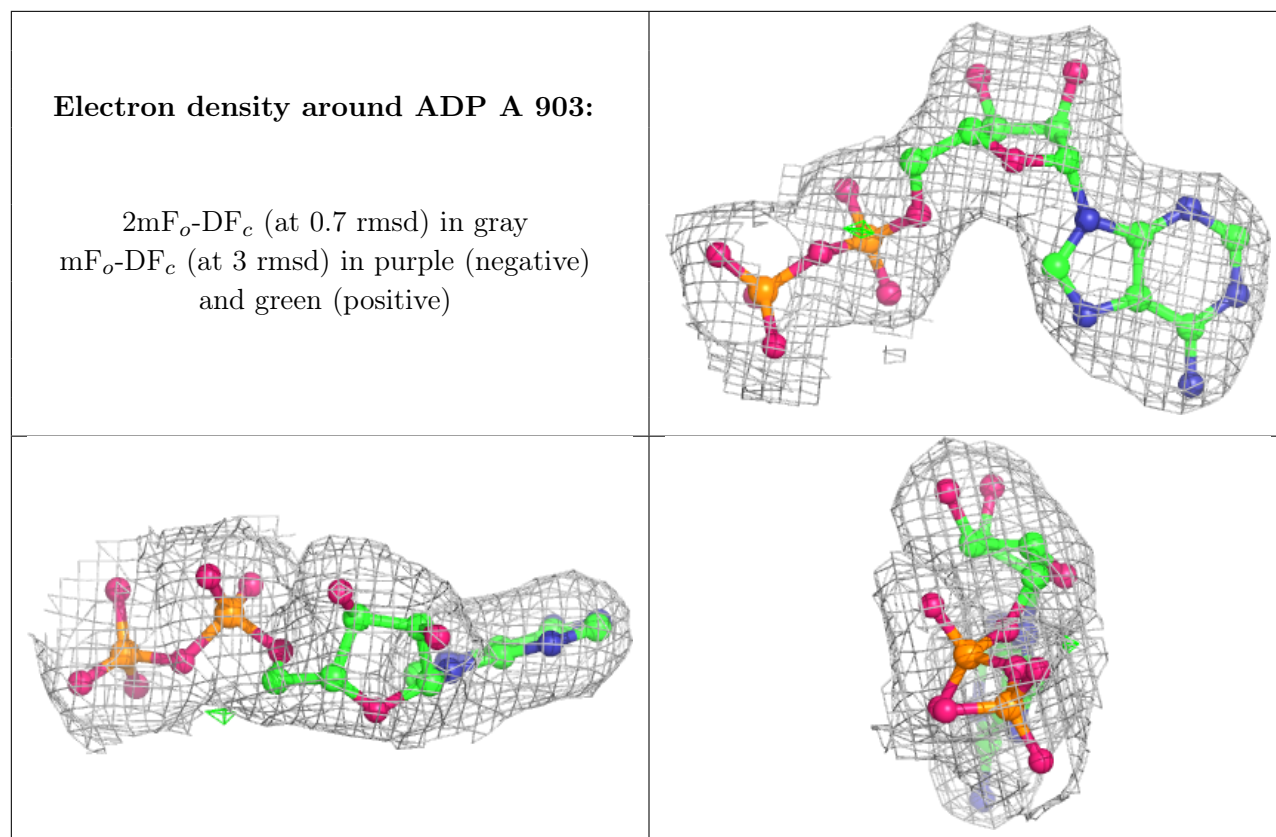
In the following table, the Atoms column lists the number of modelled atoms in the group and the number defined in the chemical component dictionary. The B-factors column lists the minimum,

median, 95<sup>th</sup> percentile and maximum values of B factors of atoms in the group. The column labelled 'Q < 0.9' lists the number of atoms with occupancy less than 0.9.

Mol	Type	Chain	Res	Atoms	RSCC	RSR	B-factors(Å <sup>2</sup> )	Q<0.9
2	52E	A	901	35/35	0.93	0.20	24,31,46,50	0
4	ADP	A	903	27/27	0.98	0.16	12,17,25,28	0
3	MG	A	902	1/1	0.99	0.17	14,14,14,14	0

The following is a graphical depiction of the model fit to experimental electron density of all instances of the Ligand of Interest. In addition, ligands with molecular weight > 250 and outliers as shown on the geometry validation Tables will also be included. Each fit is shown from different orientation to approximate a three-dimensional view.





## 6.5 Other polymers [i](#)

There are no such residues in this entry.