



Full wwPDB X-ray Structure Validation Report ⓘ

Aug 8, 2020 – 07:12 AM BST

PDB ID : 3M1C
Title : Crystal structure of the conserved herpesvirus fusion regulator complex gH-gL
Authors : Chowdary, T.K.; Heldwein, E.E.
Deposited on : 2010-03-04
Resolution : 3.00 Å(reported)

This is a Full wwPDB X-ray Structure Validation Report for a publicly released PDB entry.

We welcome your comments at validation@mail.wwpdb.org

A user guide is available at

<https://www.wwpdb.org/validation/2017/XrayValidationReportHelp>

with specific help available everywhere you see the ⓘ symbol.

The following versions of software and data (see [references ⓘ](#)) were used in the production of this report:

MolProbity : 4.02b-467
Mogul : 1.8.5 (274361), CSD as541be (2020)
Xtriage (Phenix) : 1.13
EDS : 2.13.1
Percentile statistics : 20191225.v01 (using entries in the PDB archive December 25th 2019)
Refmac : 5.8.0158
CCP4 : 7.0.044 (Gargrove)
Ideal geometry (proteins) : Engh & Huber (2001)
Ideal geometry (DNA, RNA) : Parkinson et al. (1996)
Validation Pipeline (wwPDB-VP) : 2.13.1

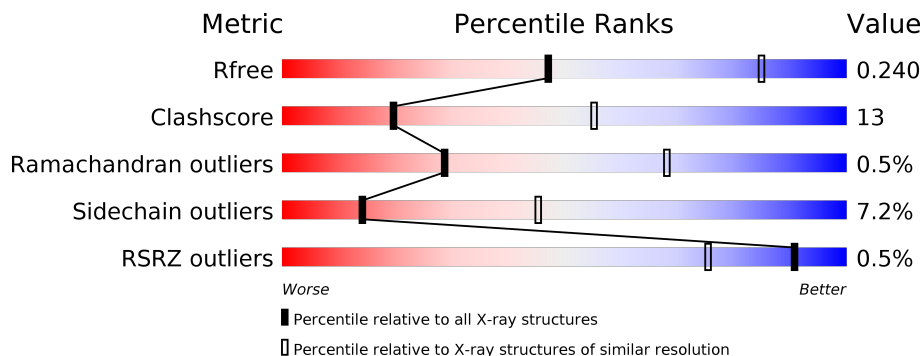
1 Overall quality at a glance

The following experimental techniques were used to determine the structure:

X-RAY DIFFRACTION

The reported resolution of this entry is 3.00 Å.

Percentile scores (ranging between 0-100) for global validation metrics of the entry are shown in the following graphic. The table shows the number of entries on which the scores are based.



Metric	Whole archive (#Entries)	Similar resolution (#Entries, resolution range(Å))
R_{free}	130704	2092 (3.00-3.00)
Clashscore	141614	2416 (3.00-3.00)
Ramachandran outliers	138981	2333 (3.00-3.00)
Sidechain outliers	138945	2336 (3.00-3.00)
RSRZ outliers	127900	1990 (3.00-3.00)

The table below summarises the geometric issues observed across the polymeric chains and their fit to the electron density. The red, orange, yellow and green segments on the lower bar indicate the fraction of residues that contain outliers for ≥ 3 , 2, 1 and 0 types of geometric quality criteria respectively. A grey segment represents the fraction of residues that are not modelled. The numeric value for each fraction is indicated below the corresponding segment, with a dot representing fractions $\leq 5\%$. The upper red bar (where present) indicates the fraction of residues that have poor fit to the electron density. The numeric value is given above the bar.

Mol	Chain	Length	Quality of chain
1	A	762	 70% 22% 6%
2	B	204	 39% 31% 28%
3	C	2	 100%

2 Entry composition i

There are 6 unique types of molecules in this entry. The entry contains 6708 atoms, of which 0 are hydrogens and 0 are deuteriums.

In the tables below, the ZeroOcc column contains the number of atoms modelled with zero occupancy, the AltConf column contains the number of residues with at least one atom in alternate conformation and the Trace column contains the number of residues modelled with at most 2 atoms.

- Molecule 1 is a protein called Envelope glycoprotein H.

Mol	Chain	Residues	Atoms					ZeroOcc	AltConf	Trace
			Total	C	N	O	S			
1	A	719	5428	3453	985	975	15	0	0	0

There are 6 discrepancies between the modelled and reference sequences:

Chain	Residue	Modelled	Actual	Comment	Reference
A	804	HIS	-	expression tag	UNP P89445
A	805	HIS	-	expression tag	UNP P89445
A	806	HIS	-	expression tag	UNP P89445
A	807	HIS	-	expression tag	UNP P89445
A	808	HIS	-	expression tag	UNP P89445
A	809	HIS	-	expression tag	UNP P89445

- Molecule 2 is a protein called Envelope glycoprotein L.

Mol	Chain	Residues	Atoms					ZeroOcc	AltConf	Trace
			Total	C	N	O	S			
2	B	146	1162	729	218	210	5	0	0	0

- Molecule 3 is an oligosaccharide called 2-acetamido-2-deoxy-beta-D-glucopyranose-(1-4)-2-acetamido-2-deoxy-beta-D-glucopyranose.



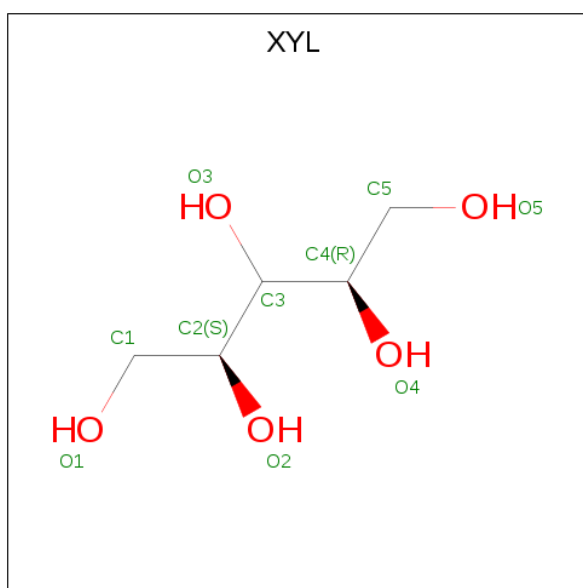
Mol	Chain	Residues	Atoms				ZeroOcc	AltConf	Trace
			Total	C	N	O			
3	C	2	28	16	2	10	0	0	0

- Molecule 4 is 2-acetamido-2-deoxy-beta-D-glucopyranose (three-letter code: NAG) (formula: C₈H₁₅NO₆).



Mol	Chain	Residues	Atoms			ZeroOcc	AltConf	
			Total	C	N			O
4	A	1	14	8	1	5	0	0
4	A	1	14	8	1	5	0	0

- Molecule 5 is Xylitol (three-letter code: XYL) (formula: $C_5H_{12}O_5$).



Mol	Chain	Residues	Atoms			ZeroOcc	AltConf
			Total	C	O		
5	A	1	10	5	5	0	0

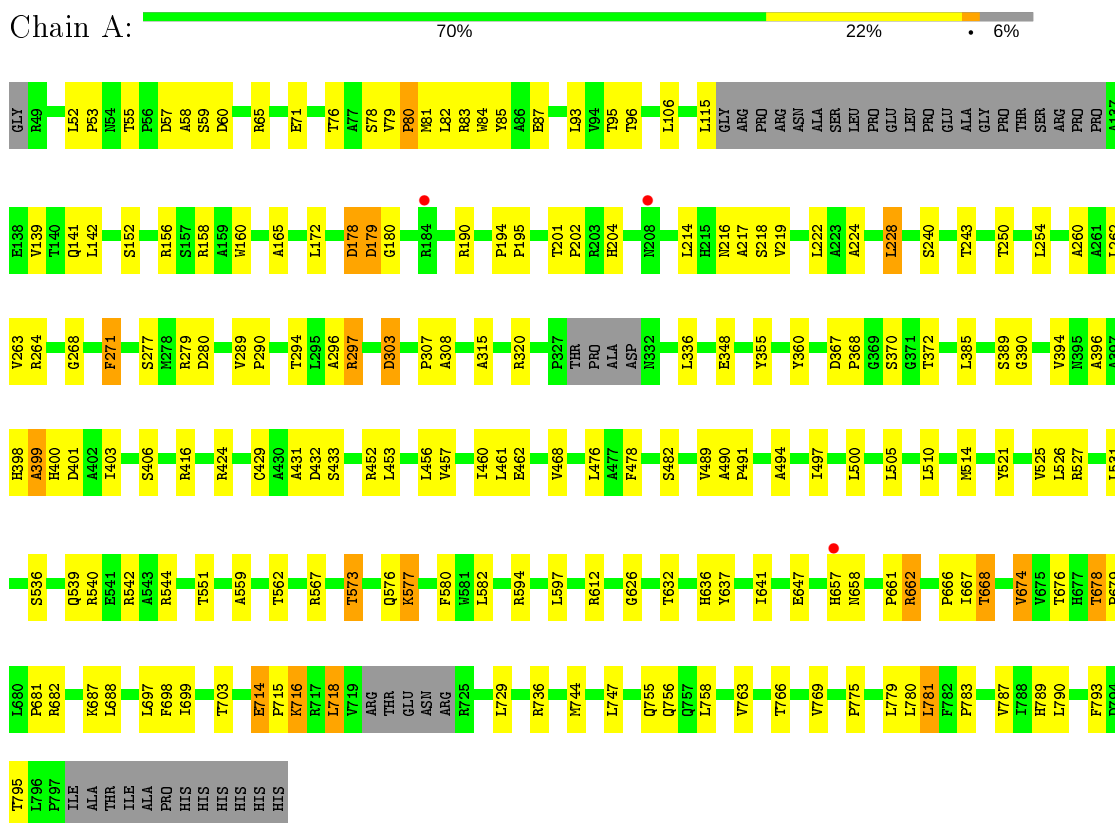
- Molecule 6 is water.

Mol	Chain	Residues	Atoms		ZeroOcc	AltConf
6	A	46	Total 46	O 46	0	0
6	B	6	Total 6	O 6	0	0

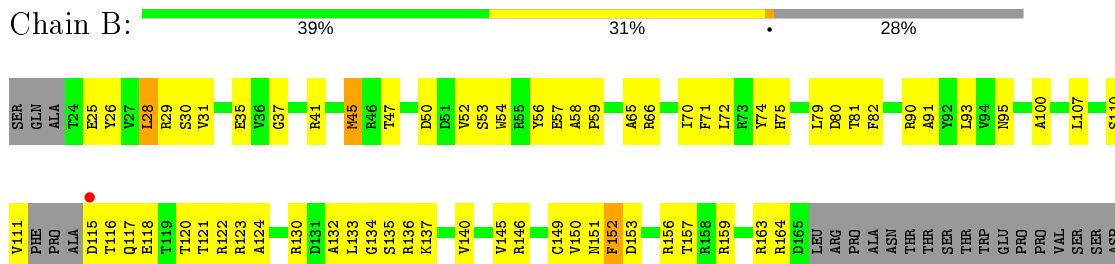
3 Residue-property plots

These plots are drawn for all protein, RNA, DNA and oligosaccharide chains in the entry. The first graphic for a chain summarises the proportions of the various outlier classes displayed in the second graphic. The second graphic shows the sequence view annotated by issues in geometry and electron density. Residues are color-coded according to the number of geometric quality criteria for which they contain at least one outlier: green = 0, yellow = 1, orange = 2 and red = 3 or more. A red dot above a residue indicates a poor fit to the electron density ($RSRZ > 2$). Stretches of 2 or more consecutive residues without any outlier are shown as a green connector. Residues present in the sample, but not in the model, are shown in grey.

- Molecule 1: Envelope glycoprotein H




- Molecule 2: Envelope glycoprotein L



ASP
GLU
ALA
SER
SER
GLN
SER
LYS
PRO
LEU
ALA
THR
GLN
PRO
P197
N203
ALA
PRO
PRO
ARG
ARG
VAL
SER
PRO
THR
ARG
GLY
ARG
ARG
HIS
THR
ARG
LEU
ARG
ASN

- Molecule 3: 2-acetamido-2-deoxy-beta-D-glucopyranose-(1-4)-2-acetamido-2-deoxy-beta-D-glucopyranose

Chain C:  100%

MAG1
MAG2

4 Data and refinement statistics

Property	Value	Source
Space group	P 41 21 2	Depositor
Cell constants a, b, c, α , β , γ	88.25Å 88.25Å 333.41Å 90.00° 90.00° 90.00°	Depositor
Resolution (Å)	39.20 – 3.00 49.96 – 2.84	Depositor EDS
% Data completeness (in resolution range)	94.6 (39.20-3.00) 92.1 (49.96-2.84)	Depositor EDS
R_{merge}	0.13	Depositor
R_{sym}	(Not available)	Depositor
$\langle I/\sigma(I) \rangle$ ¹	1.45 (at 2.86Å)	Xtrriage
Refinement program	PHENIX 1.4_175	Depositor
R, R_{free}	0.170 , 0.242 0.172 , 0.240	Depositor DCC
R_{free} test set	3107 reflections (9.63%)	wwPDB-VP
Wilson B-factor (Å ²)	51.5	Xtrriage
Anisotropy	0.337	Xtrriage
Bulk solvent k_{sol} (e/Å ³), B_{sol} (Å ²)	0.33 , 50.8	EDS
L-test for twinning ²	$\langle L \rangle = 0.48$, $\langle L^2 \rangle = 0.31$	Xtrriage
Estimated twinning fraction	No twinning to report.	Xtrriage
F_o, F_c correlation	0.94	EDS
Total number of atoms	6708	wwPDB-VP
Average B, all atoms (Å ²)	59.0	wwPDB-VP

Xtrriage's analysis on translational NCS is as follows: *The largest off-origin peak in the Patterson function is 3.32% of the height of the origin peak. No significant pseudotranslation is detected.*

¹Intensities estimated from amplitudes.

²Theoretical values of $\langle |L| \rangle$, $\langle L^2 \rangle$ for acentric reflections are 0.5, 0.333 respectively for untwinned datasets, and 0.375, 0.2 for perfectly twinned datasets.

5 Model quality

5.1 Standard geometry

Bond lengths and bond angles in the following residue types are not validated in this section: XYL, NAG

The Z score for a bond length (or angle) is the number of standard deviations the observed value is removed from the expected value. A bond length (or angle) with $|Z| > 5$ is considered an outlier worth inspection. RMSZ is the root-mean-square of all Z scores of the bond lengths (or angles).

Mol	Chain	Bond lengths		Bond angles	
		RMSZ	# Z >5	RMSZ	# Z >5
1	A	0.45	0/5569	0.61	0/7616
2	B	0.47	0/1186	0.61	0/1606
All	All	0.45	0/6755	0.61	0/9222

There are no bond length outliers.

There are no bond angle outliers.

There are no chirality outliers.

There are no planarity outliers.

5.2 Too-close contacts

In the following table, the Non-H and H(model) columns list the number of non-hydrogen atoms and hydrogen atoms in the chain respectively. The H(added) column lists the number of hydrogen atoms added and optimized by MolProbity. The Clashes column lists the number of clashes within the asymmetric unit, whereas Symm-Clashes lists symmetry related clashes.

Mol	Chain	Non-H	H(model)	H(added)	Clashes	Symm-Clashes
1	A	5428	0	5412	129	0
2	B	1162	0	1116	49	0
3	C	28	0	25	0	0
4	A	28	0	26	0	0
5	A	10	0	12	2	0
6	A	46	0	0	1	0
6	B	6	0	0	0	0
All	All	6708	0	6591	168	0

The all-atom clashscore is defined as the number of clashes found per 1000 atoms (including hydrogen atoms). The all-atom clashscore for this structure is 13.

All (168) close contacts within the same asymmetric unit are listed below, sorted by their clash magnitude.

Atom-1	Atom-2	Interatomic distance (Å)	Clash overlap (Å)
1:A:368:PRO:HG3	1:A:626:GLY:HA2	1.67	0.75
1:A:416:ARG:HB2	1:A:416:ARG:NH1	2.01	0.74
2:B:132:ALA:O	2:B:135:SER:HB3	1.86	0.74
1:A:279:ARG:HG2	1:A:280:ASP:OD2	1.88	0.73
1:A:576:GLN:HG3	1:A:577:LYS:HD3	1.71	0.73
1:A:315:ALA:HB2	1:A:320:ARG:HD2	1.70	0.73
1:A:424:ARG:HD2	1:A:431:ALA:HB2	1.70	0.72
1:A:178:ASP:HB3	1:A:190:ARG:HH22	1.55	0.72
2:B:115:ASP:OD2	2:B:116:THR:N	2.23	0.71
1:A:416:ARG:HB2	1:A:416:ARG:HH11	1.55	0.71
1:A:277:SER:HB3	2:B:150:VAL:HG13	1.73	0.70
2:B:37:GLY:O	2:B:41:ARG:HG3	1.92	0.69
1:A:559:ALA:O	1:A:562:THR:HG22	1.92	0.69
2:B:28:LEU:HD23	2:B:93:LEU:HD23	1.75	0.68
1:A:775:PRO:HA	1:A:795:THR:O	1.93	0.68
1:A:688:LEU:HD22	1:A:779:LEU:HD11	1.76	0.67
2:B:110:SER:O	2:B:111:VAL:C	2.33	0.66
1:A:152:SER:O	1:A:156:ARG:HG3	1.97	0.65
1:A:747:LEU:HD11	1:A:769:VAL:HG12	1.80	0.64
2:B:31:VAL:CG1	2:B:91:ALA:HB3	2.29	0.63
1:A:682:ARG:HH21	5:A:1:XYL:H52	1.63	0.63
1:A:179:ASP:HB3	1:A:348:GLU:HG2	1.80	0.63
1:A:500:LEU:HB3	1:A:510:LEU:HD21	1.80	0.62
1:A:52:LEU:HD13	1:A:80:PRO:HD3	1.80	0.62
1:A:718:LEU:N	1:A:718:LEU:HD22	2.16	0.61
1:A:461:LEU:HD11	1:A:489:VAL:HG12	1.83	0.60
1:A:452:ARG:HE	1:A:456:LEU:HD21	1.66	0.60
2:B:153:ASP:HB3	2:B:156:ARG:HG2	1.81	0.60
1:A:178:ASP:HB3	1:A:190:ARG:NH2	2.17	0.60
1:A:390:GLY:O	1:A:394:VAL:HG12	2.01	0.60
2:B:45:MET:O	2:B:45:MET:HG3	2.01	0.60
1:A:224:ALA:HB1	1:A:228:LEU:HD22	1.84	0.59
1:A:85:TYR:OH	1:A:87:GLU:HG2	2.02	0.59
2:B:30:SER:HB2	2:B:90:ARG:HE	1.67	0.59
1:A:79:VAL:C	1:A:80:PRO:O	2.39	0.58
1:A:228:LEU:HD13	1:A:403:ILE:HD11	1.84	0.58
1:A:657:HIS:HB2	1:A:681:PRO:HG3	1.85	0.58
2:B:152:PHE:CD2	2:B:152:PHE:N	2.70	0.57
1:A:521:TYR:O	1:A:525:VAL:HG23	2.03	0.57
1:A:115:LEU:HD11	2:B:65:ALA:HB2	1.85	0.57

Continued on next page...

Continued from previous page...

Atom-1	Atom-2	Interatomic distance (Å)	Clash overlap (Å)
2:B:30:SER:CB	2:B:90:ARG:HE	2.17	0.57
2:B:29:ARG:HH11	2:B:90:ARG:CZ	2.17	0.57
2:B:70:ILE:HG22	2:B:72:LEU:HD13	1.86	0.57
1:A:678:THR:HG22	1:A:679:PRO:HD2	1.87	0.56
1:A:729:LEU:HD22	1:A:780:LEU:HD21	1.86	0.56
1:A:271:PHE:C	1:A:271:PHE:CD1	2.79	0.56
1:A:142:LEU:HD23	1:A:142:LEU:N	2.20	0.56
1:A:262:LEU:HD21	1:A:264:ARG:NH2	2.21	0.56
1:A:216:ASN:ND2	6:A:37:HOH:O	2.33	0.55
1:A:576:GLN:HG3	1:A:577:LYS:H	1.71	0.55
1:A:80:PRO:C	1:A:82:LEU:H	2.09	0.55
1:A:729:LEU:HB2	1:A:755:GLN:HG3	1.87	0.55
1:A:178:ASP:C	1:A:180:GLY:H	2.09	0.55
1:A:661:PRO:HB3	1:A:674:VAL:HG22	1.87	0.55
1:A:667:ILE:HG23	1:A:668:THR:HG23	1.89	0.55
1:A:78:SER:O	1:A:80:PRO:O	2.25	0.55
2:B:71:PHE:HB2	2:B:82:PHE:HB2	1.88	0.54
1:A:736:ARG:HD3	1:A:744:MET:HE3	1.89	0.54
1:A:82:LEU:O	1:A:83:ARG:HB2	2.08	0.54
1:A:219:VAL:HG12	1:A:219:VAL:O	2.08	0.54
1:A:758:LEU:HD23	1:A:793:PHE:CZ	2.43	0.54
1:A:296:ALA:HB1	1:A:307:PRO:HB2	1.90	0.53
2:B:136:ARG:HH11	2:B:136:ARG:HG3	1.72	0.53
2:B:152:PHE:HD2	2:B:152:PHE:N	2.06	0.53
2:B:117:GLN:O	2:B:120:THR:HG22	2.08	0.53
1:A:416:ARG:HG2	1:A:478:PHE:CZ	2.45	0.52
1:A:781:LEU:HD23	1:A:781:LEU:N	2.24	0.51
2:B:31:VAL:HG12	2:B:91:ALA:HB3	1.93	0.51
2:B:70:ILE:HG22	2:B:72:LEU:CD1	2.40	0.51
1:A:715:PRO:O	1:A:716:LYS:HG2	2.11	0.51
1:A:763:VAL:HB	1:A:766:THR:HB	1.92	0.51
1:A:780:LEU:HD22	1:A:790:LEU:HD11	1.92	0.50
1:A:573:THR:HG21	1:A:580:PHE:HB2	1.93	0.50
2:B:117:GLN:HA	2:B:120:THR:HG22	1.93	0.50
1:A:497:ILE:HD12	1:A:526:LEU:HD12	1.92	0.50
1:A:453:LEU:O	1:A:457:VAL:HG23	2.11	0.50
1:A:687:LYS:HD2	1:A:698:PHE:CZ	2.47	0.50
1:A:781:LEU:HD22	1:A:787:VAL:HG13	1.93	0.50
1:A:289:VAL:HB	1:A:290:PRO:HD2	1.93	0.49
1:A:96:THR:O	2:B:75:HIS:HB3	2.11	0.49
1:A:461:LEU:HD11	1:A:489:VAL:HA	1.93	0.49

Continued on next page...

Continued from previous page...

Atom-1	Atom-2	Interatomic distance (Å)	Clash overlap (Å)
1:A:490:ALA:HB3	1:A:491:PRO:HD3	1.93	0.49
2:B:121:THR:O	2:B:124:ALA:HB3	2.11	0.49
2:B:134:GLY:O	2:B:137:LYS:HG2	2.12	0.49
2:B:118:GLU:O	2:B:122:ARG:HG3	2.12	0.48
2:B:100:ALA:HB1	2:B:133:LEU:HD22	1.96	0.48
1:A:476:LEU:HA	1:A:476:LEU:HD23	1.55	0.48
2:B:25:GLU:OE1	2:B:157:THR:HB	2.13	0.48
1:A:433:SER:HA	2:B:163:ARG:HB3	1.96	0.48
1:A:190:ARG:HG2	1:A:576:GLN:OE1	2.14	0.48
1:A:636:HIS:NE2	1:A:641:ILE:HD12	2.29	0.48
1:A:80:PRO:O	1:A:81:MET:CB	2.60	0.48
2:B:29:ARG:HG3	2:B:30:SER:N	2.29	0.48
1:A:674:VAL:HG13	1:A:676:THR:HG23	1.94	0.47
1:A:679:PRO:HD3	1:A:698:PHE:CZ	2.49	0.47
1:A:551:THR:HG23	1:A:594:ARG:HG3	1.97	0.47
2:B:110:SER:O	2:B:111:VAL:O	2.33	0.47
1:A:53:PRO:HD2	1:A:79:VAL:CG1	2.44	0.47
1:A:277:SER:HB2	2:B:149:CYS:HA	1.98	0.46
1:A:536:SER:OG	1:A:539:GLN:HG3	2.15	0.46
2:B:29:ARG:HD2	2:B:57:GLU:OE1	2.14	0.46
1:A:254:LEU:HD23	1:A:254:LEU:C	2.36	0.46
2:B:136:ARG:NH1	2:B:136:ARG:HG3	2.30	0.46
1:A:551:THR:HG23	1:A:594:ARG:CG	2.46	0.46
1:A:218:SER:HA	1:A:406:SER:OG	2.15	0.45
1:A:160:TRP:HB3	2:B:140:VAL:HG23	1.97	0.45
2:B:153:ASP:HB3	2:B:156:ARG:CG	2.45	0.45
1:A:80:PRO:C	1:A:82:LEU:N	2.69	0.45
1:A:497:ILE:HD12	1:A:526:LEU:CD1	2.47	0.45
1:A:158:ARG:HD3	2:B:54:TRP:CE2	2.51	0.45
1:A:360:TYR:CD1	1:A:582:LEU:HB2	2.52	0.45
1:A:95:THR:O	2:B:74:TYR:HB2	2.17	0.44
1:A:687:LYS:HD2	1:A:698:PHE:CE1	2.52	0.44
1:A:662:ARG:HA	1:A:662:ARG:NE	2.32	0.44
1:A:355:TYR:CD2	1:A:389:SER:HA	2.52	0.44
1:A:214:LEU:O	1:A:217:ALA:HB2	2.18	0.44
1:A:461:LEU:HD11	1:A:489:VAL:CG1	2.48	0.44
1:A:715:PRO:HA	1:A:789:HIS:HB3	1.99	0.44
1:A:468:VAL:HG22	1:A:514:MET:SD	2.58	0.44
1:A:582:LEU:HD12	1:A:582:LEU:HA	1.84	0.43
1:A:201:THR:HA	1:A:202:PRO:HD3	1.84	0.43
1:A:688:LEU:HD21	1:A:699:ILE:HG13	2.00	0.43

Continued on next page...

Continued from previous page...

Atom-1	Atom-2	Interatomic distance (Å)	Clash overlap (Å)
1:A:84:TRP:HZ3	1:A:93:LEU:HD22	1.83	0.43
1:A:172:LEU:HD11	1:A:336:LEU:HD11	2.00	0.43
1:A:736:ARG:CD	1:A:744:MET:HE3	2.48	0.43
1:A:214:LEU:HD23	1:A:460:ILE:HD11	2.01	0.43
2:B:58:ALA:HB1	2:B:59:PRO:HD2	1.99	0.43
1:A:401:ASP:O	1:A:401:ASP:OD2	2.37	0.43
2:B:151:ASN:HA	2:B:152:PHE:HA	1.71	0.43
1:A:57:ASP:O	1:A:59:SER:N	2.51	0.42
1:A:65:ARG:HD3	2:B:120:THR:HG23	2.00	0.42
2:B:56:TYR:CE2	2:B:95:ASN:HA	2.54	0.42
1:A:688:LEU:HD12	1:A:697:LEU:CB	2.49	0.42
1:A:756:GLN:C	1:A:758:LEU:N	2.73	0.42
1:A:277:SER:CB	2:B:150:VAL:HG13	2.45	0.42
1:A:139:VAL:O	1:A:139:VAL:HG12	2.20	0.42
1:A:260:ALA:HB3	1:A:429:CYS:SG	2.60	0.42
1:A:453:LEU:HD23	1:A:453:LEU:HA	1.77	0.42
2:B:107:LEU:O	2:B:122:ARG:NH1	2.53	0.42
1:A:194:PRO:HA	1:A:195:PRO:HD3	1.92	0.42
1:A:597:LEU:HB2	1:A:632:THR:HG23	2.02	0.42
1:A:297:ARG:HD2	1:A:303:ASP:OD2	2.21	0.41
1:A:250:THR:HA	1:A:268:GLY:HA2	2.02	0.41
1:A:55:THR:HG22	1:A:106:LEU:HB3	2.02	0.41
2:B:50:ASP:HB3	2:B:146:ARG:NH2	2.36	0.41
1:A:385:LEU:HA	1:A:385:LEU:HD23	1.84	0.41
2:B:120:THR:HG23	2:B:121:THR:N	2.36	0.41
1:A:228:LEU:HD23	1:A:398:HIS:CE1	2.56	0.41
1:A:494:ALA:HB2	1:A:542:ARG:HD3	2.02	0.41
1:A:766:THR:O	1:A:766:THR:HG22	2.19	0.41
2:B:74:TYR:O	2:B:136:ARG:NH1	2.54	0.41
1:A:756:GLN:C	1:A:758:LEU:H	2.24	0.41
1:A:667:ILE:HG12	1:A:783:PRO:HA	2.02	0.41
1:A:396:ALA:O	1:A:399:ALA:HB3	2.21	0.41
1:A:769:VAL:O	1:A:769:VAL:HG12	2.20	0.41
1:A:141:GLN:C	1:A:142:LEU:HD23	2.42	0.41
1:A:71:GLU:HG2	1:A:71:GLU:O	2.21	0.41
1:A:367:ASP:HA	1:A:368:PRO:HD3	1.90	0.41
1:A:527:ARG:HD3	1:A:637:TYR:CE1	2.56	0.41
1:A:165:ALA:CB	1:A:240:SER:HB2	2.51	0.40
1:A:658:ASN:ND2	5:A:1:XYL:H3	2.36	0.40
1:A:297:ARG:CG	1:A:308:ALA:HB3	2.51	0.40
1:A:688:LEU:HD12	1:A:697:LEU:HB3	2.03	0.40

Continued on next page...

Continued from previous page...

Atom-1	Atom-2	Interatomic distance (Å)	Clash overlap (Å)
2:B:26:TYR:CD2	2:B:52:VAL:HG13	2.56	0.40
1:A:544:ARG:HG3	1:A:666:PRO:HB2	2.04	0.40
1:A:714:GLU:HA	1:A:715:PRO:HD3	1.78	0.40
2:B:79:LEU:O	2:B:80:ASP:C	2.60	0.40
1:A:262:LEU:HD21	1:A:264:ARG:HH22	1.86	0.40

There are no symmetry-related clashes.

5.3 Torsion angles [i](#)

5.3.1 Protein backbone [i](#)

In the following table, the Percentiles column shows the percent Ramachandran outliers of the chain as a percentile score with respect to all X-ray entries followed by that with respect to entries of similar resolution.

The Analysed column shows the number of residues for which the backbone conformation was analysed, and the total number of residues.

Mol	Chain	Analysed	Favoured	Allowed	Outliers	Percentiles
1	A	711/762 (93%)	660 (93%)	48 (7%)	3 (0%)	34 72
2	B	140/204 (69%)	128 (91%)	11 (8%)	1 (1%)	22 60
All	All	851/966 (88%)	788 (93%)	59 (7%)	4 (0%)	29 68

All (4) Ramachandran outliers are listed below:

Mol	Chain	Res	Type
1	A	58	ALA
1	A	80	PRO
1	A	399	ALA
2	B	164	ARG

5.3.2 Protein sidechains [i](#)

In the following table, the Percentiles column shows the percent sidechain outliers of the chain as a percentile score with respect to all X-ray entries followed by that with respect to entries of similar resolution.

The Analysed column shows the number of residues for which the sidechain conformation was analysed, and the total number of residues.

Mol	Chain	Analysed	Rotameric	Outliers	Percentiles	
1	A	551/587 (94%)	515 (94%)	36 (6%)	17	50
2	B	119/176 (68%)	107 (90%)	12 (10%)	7	29
All	All	670/763 (88%)	622 (93%)	48 (7%)	14	45

All (48) residues with a non-rotameric sidechain are listed below:

Mol	Chain	Res	Type
1	A	60	ASP
1	A	76	THR
1	A	178	ASP
1	A	179	ASP
1	A	204	HIS
1	A	222	LEU
1	A	228	LEU
1	A	243	THR
1	A	263	VAL
1	A	271	PHE
1	A	294	THR
1	A	297	ARG
1	A	303	ASP
1	A	370	SER
1	A	372	THR
1	A	400	HIS
1	A	432	ASP
1	A	462	GLU
1	A	482	SER
1	A	505	LEU
1	A	531	LEU
1	A	540	ARG
1	A	567	ARG
1	A	573	THR
1	A	577	LYS
1	A	612	ARG
1	A	647	GLU
1	A	662	ARG
1	A	668	THR
1	A	674	VAL
1	A	678	THR
1	A	703	THR
1	A	714	GLU
1	A	716	LYS
1	A	718	LEU

Continued on next page...

Continued from previous page...

Mol	Chain	Res	Type
1	A	781	LEU
2	B	28	LEU
2	B	35	GLU
2	B	45	MET
2	B	47	THR
2	B	53	SER
2	B	66	ARG
2	B	81	THR
2	B	123	ARG
2	B	130	ARG
2	B	145	VAL
2	B	152	PHE
2	B	159	ARG

Some sidechains can be flipped to improve hydrogen bonding and reduce clashes. There are no such sidechains identified.

5.3.3 RNA [i](#)

There are no RNA molecules in this entry.

5.4 Non-standard residues in protein, DNA, RNA chains [i](#)

There are no non-standard protein/DNA/RNA residues in this entry.

5.5 Carbohydrates [i](#)

2 monosaccharides are modelled in this entry.

In the following table, the Counts columns list the number of bonds (or angles) for which Mogul statistics could be retrieved, the number of bonds (or angles) that are observed in the model and the number of bonds (or angles) that are defined in the Chemical Component Dictionary. The Link column lists molecule types, if any, to which the group is linked. The Z score for a bond length (or angle) is the number of standard deviations the observed value is removed from the expected value. A bond length (or angle) with $|Z| > 2$ is considered an outlier worth inspection. RMSZ is the root-mean-square of all Z scores of the bond lengths (or angles).

Mol	Type	Chain	Res	Link	Bond lengths			Bond angles		
					Counts	RMSZ	$\# Z > 2$	Counts	RMSZ	$\# Z > 2$
3	NAG	C	1	1,3	14,14,15	0.53	0	17,19,21	1.62	1 (5%)
3	NAG	C	2	3	14,14,15	0.42	0	17,19,21	0.97	1 (5%)

In the following table, the Chirals column lists the number of chiral outliers, the number of chiral centers analysed, the number of these observed in the model and the number defined in the Chemical Component Dictionary. Similar counts are reported in the Torsion and Rings columns. '-' means no outliers of that kind were identified.

Mol	Type	Chain	Res	Link	Chirals	Torsions	Rings
3	NAG	C	1	1,3	-	1/6/23/26	0/1/1/1
3	NAG	C	2	3	-	3/6/23/26	0/1/1/1

There are no bond length outliers.

All (2) bond angle outliers are listed below:

Mol	Chain	Res	Type	Atoms	Z	Observed($^{\circ}$)	Ideal($^{\circ}$)
3	C	1	NAG	C1-O5-C5	5.31	119.39	112.19
3	C	2	NAG	C1-O5-C5	2.25	115.25	112.19

There are no chirality outliers.

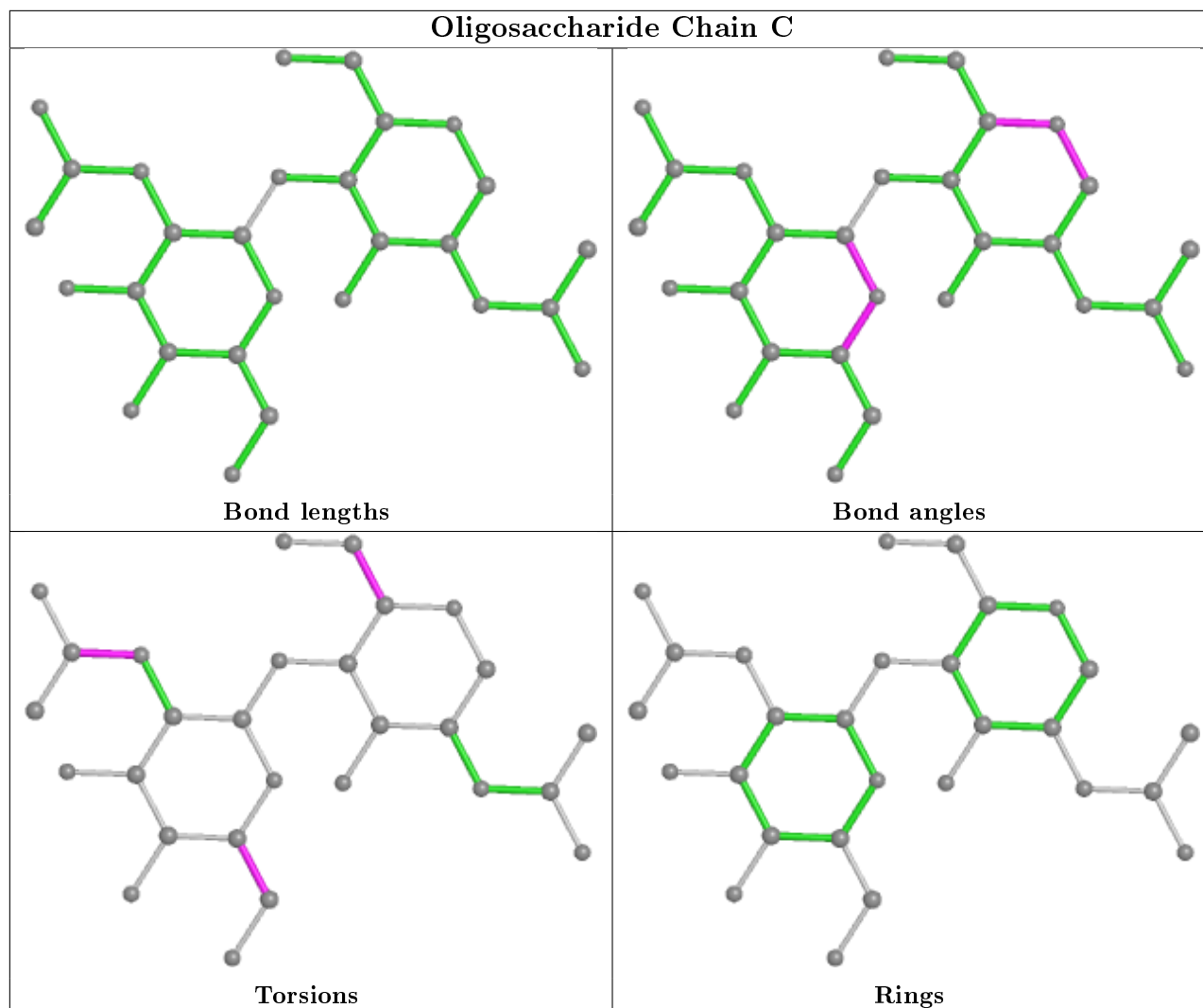
All (4) torsion outliers are listed below:

Mol	Chain	Res	Type	Atoms
3	C	2	NAG	O7-C7-N2-C2
3	C	2	NAG	C8-C7-N2-C2
3	C	2	NAG	O5-C5-C6-O6
3	C	1	NAG	O5-C5-C6-O6

There are no ring outliers.

No monomer is involved in short contacts.

The following is a two-dimensional graphical depiction of Mogul quality analysis of bond lengths, bond angles, torsion angles, and ring geometry for oligosaccharide.



5.6 Ligand geometry [i](#)

3 ligands are modelled in this entry.

In the following table, the Counts columns list the number of bonds (or angles) for which Mogul statistics could be retrieved, the number of bonds (or angles) that are observed in the model and the number of bonds (or angles) that are defined in the Chemical Component Dictionary. The Link column lists molecule types, if any, to which the group is linked. The Z score for a bond length (or angle) is the number of standard deviations the observed value is removed from the expected value. A bond length (or angle) with $|Z| > 2$ is considered an outlier worth inspection. RMSZ is the root-mean-square of all Z scores of the bond lengths (or angles).

Mol	Type	Chain	Res	Link	Bond lengths			Bond angles		
					Counts	RMSZ	$\# Z > 2$	Counts	RMSZ	$\# Z > 2$
4	NAG	A	1670	1	14,14,15	0.85	1 (7%)	17,19,21	1.63	3 (17%)
5	XYL	A	1	-	9,9,9	0.74	0	11,11,11	1.33	2 (18%)
4	NAG	A	810	1	14,14,15	0.53	0	17,19,21	0.72	0

In the following table, the Chirals column lists the number of chiral outliers, the number of chiral centers analysed, the number of these observed in the model and the number defined in the Chemical Component Dictionary. Similar counts are reported in the Torsion and Rings columns. '-' means no outliers of that kind were identified.

Mol	Type	Chain	Res	Link	Chirals	Torsions	Rings
4	NAG	A	1670	1	-	1/6/23/26	0/1/1/1
5	XYL	A	1	-	-	0/12/12/12	-
4	NAG	A	810	1	-	0/6/23/26	0/1/1/1

All (1) bond length outliers are listed below:

Mol	Chain	Res	Type	Atoms	Z	Observed(Å)	Ideal(Å)
4	A	1670	NAG	C1-C2	2.11	1.55	1.52

All (5) bond angle outliers are listed below:

Mol	Chain	Res	Type	Atoms	Z	Observed(°)	Ideal(°)
4	A	1670	NAG	C1-O5-C5	4.85	118.77	112.19
4	A	1670	NAG	O5-C1-C2	2.84	115.77	111.29
5	A	1	XYL	C4-C3-C2	2.69	118.96	113.36
4	A	1670	NAG	C4-C3-C2	2.11	114.11	111.02
5	A	1	XYL	C1-C2-C3	2.11	116.99	112.41

There are no chirality outliers.

All (1) torsion outliers are listed below:

Mol	Chain	Res	Type	Atoms
4	A	1670	NAG	C4-C5-C6-O6

There are no ring outliers.

1 monomer is involved in 2 short contacts:

Mol	Chain	Res	Type	Clashes	Symm-Clashes
5	A	1	XYL	2	0

5.7 Other polymers

There are no such residues in this entry.

5.8 Polymer linkage issues

There are no chain breaks in this entry.

6 Fit of model and data [i](#)

6.1 Protein, DNA and RNA chains [i](#)

In the following table, the column labelled ‘#RSRZ> 2’ contains the number (and percentage) of RSRZ outliers, followed by percent RSRZ outliers for the chain as percentile scores relative to all X-ray entries and entries of similar resolution. The OWAB column contains the minimum, median, 95th percentile and maximum values of the occupancy-weighted average B-factor per residue. The column labelled ‘Q< 0.9’ lists the number of (and percentage) of residues with an average occupancy less than 0.9.

Mol	Chain	Analysed	<RSRZ>	#RSRZ>2	OWAB(Å ²)	Q<0.9
1	A	719/762 (94%)	-0.48	3 (0%) 92 79	25, 52, 104, 146	0
2	B	146/204 (71%)	-0.51	1 (0%) 87 69	36, 57, 93, 149	0
All	All	865/966 (89%)	-0.48	4 (0%) 91 75	25, 53, 101, 149	0

All (4) RSRZ outliers are listed below:

Mol	Chain	Res	Type	RSRZ
1	A	184	ARG	3.5
1	A	657	HIS	2.6
2	B	115	ASP	2.4
1	A	208	ASN	2.2

6.2 Non-standard residues in protein, DNA, RNA chains [i](#)

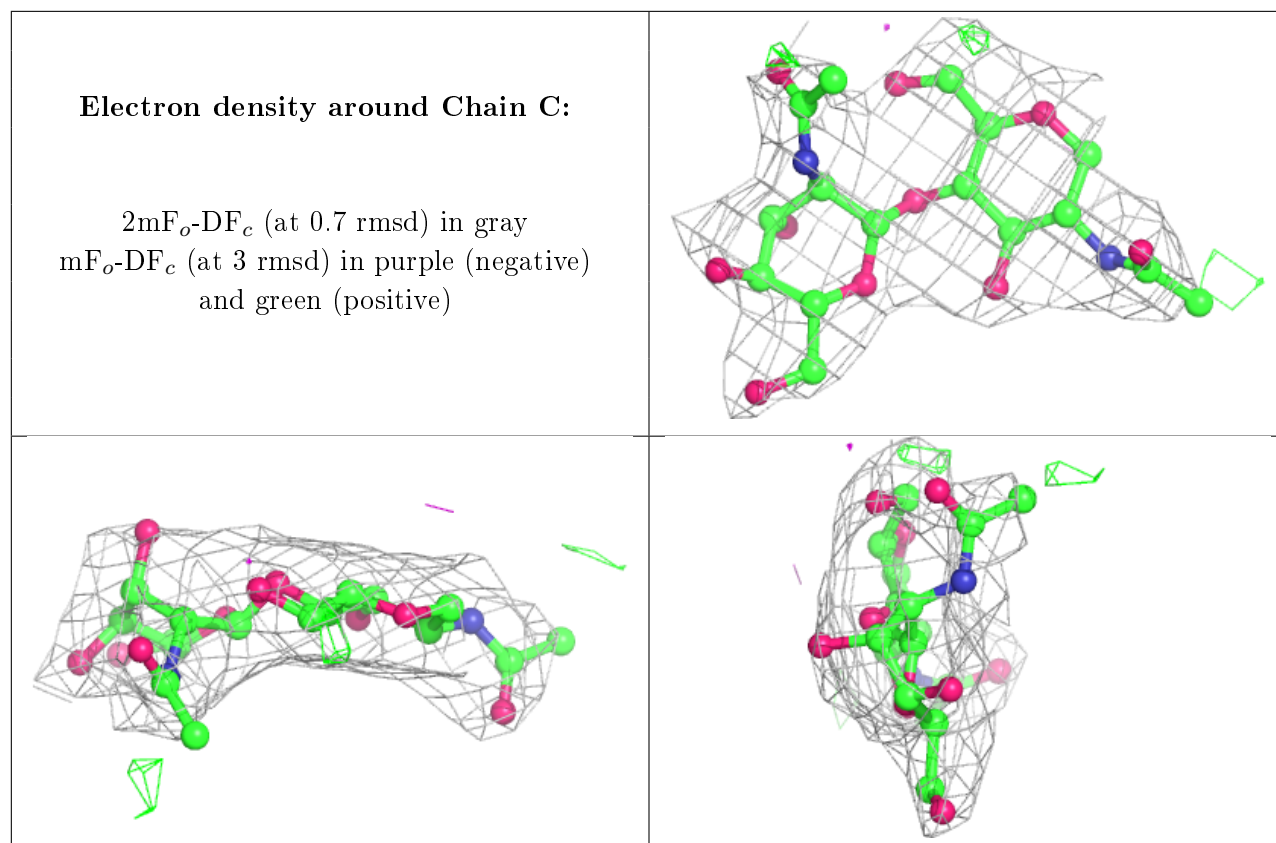
There are no non-standard protein/DNA/RNA residues in this entry.

6.3 Carbohydrates [i](#)

In the following table, the Atoms column lists the number of modelled atoms in the group and the number defined in the chemical component dictionary. The B-factors column lists the minimum, median, 95th percentile and maximum values of B factors of atoms in the group. The column labelled ‘Q< 0.9’ lists the number of atoms with occupancy less than 0.9.

Mol	Type	Chain	Res	Atoms	RSCC	RSR	B-factors(Å ²)	Q<0.9
3	NAG	C	2	14/15	0.89	0.24	85,106,113,116	0
3	NAG	C	1	14/15	0.94	0.14	57,74,80,93	0

The following is a graphical depiction of the model fit to experimental electron density for oligosaccharide. Each fit is shown from different orientation to approximate a three-dimensional view.



6.4 Ligands [i](#)

In the following table, the Atoms column lists the number of modelled atoms in the group and the number defined in the chemical component dictionary. The B-factors column lists the minimum, median, 95th percentile and maximum values of B factors of atoms in the group. The column labelled 'Q<0.9' lists the number of atoms with occupancy less than 0.9.

Mol	Type	Chain	Res	Atoms	RSCC	RSR	B-factors(Å ²)	Q<0.9
4	NAG	A	810	14/15	0.68	0.32	100,124,141,142	0
4	NAG	A	1670	14/15	0.79	0.28	81,118,137,145	0
5	XYL	A	1	10/10	0.81	0.39	65,74,126,126	0

6.5 Other polymers [i](#)

There are no such residues in this entry.