



Full wwPDB X-ray Structure Validation Report ⓘ

Sep 12, 2023 – 04:01 AM EDT

PDB ID : 4M19
Title : dihydrodipicolinate synthase from *C. jejuni* with pyruvate bound to the active site and Lysine bound to allosteric site
Authors : Conly, C.J.T.
Deposited on : 2013-08-02
Resolution : 2.00 Å(reported)

This is a Full wwPDB X-ray Structure Validation Report for a publicly released PDB entry.

We welcome your comments at validation@mail.wwpdb.org

A user guide is available at

<https://www.wwpdb.org/validation/2017/XrayValidationReportHelp>

with specific help available everywhere you see the ⓘ symbol.

The types of validation reports are described at

<http://www.wwpdb.org/validation/2017/FAQs#types>.

The following versions of software and data (see [references ⓘ](#)) were used in the production of this report:

MolProbity : 4.02b-467
Mogul : 1.8.5 (274361), CSD as541be (2020)
Xtriage (Phenix) : 1.13
EDS : 2.35.1
Percentile statistics : 20191225.v01 (using entries in the PDB archive December 25th 2019)
Refmac : 5.8.0158
CCP4 : 7.0.044 (Gargrove)
Ideal geometry (proteins) : Engh & Huber (2001)
Ideal geometry (DNA, RNA) : Parkinson et al. (1996)
Validation Pipeline (wwPDB-VP) : 2.35.1

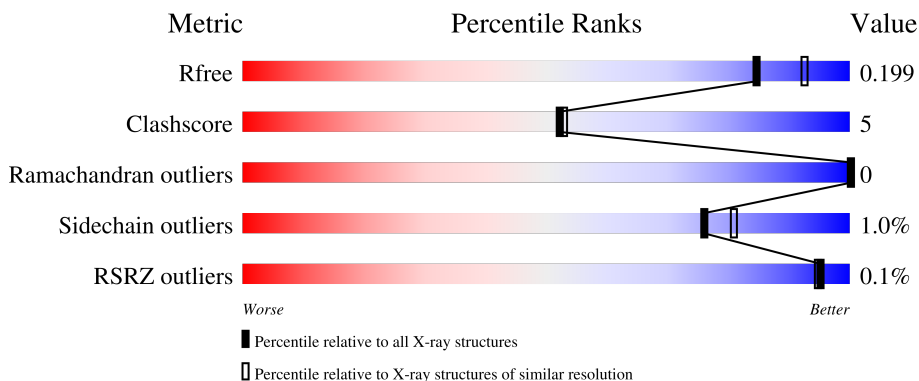
1 Overall quality at a glance

The following experimental techniques were used to determine the structure:

X-RAY DIFFRACTION

The reported resolution of this entry is 2.00 Å.

Percentile scores (ranging between 0-100) for global validation metrics of the entry are shown in the following graphic. The table shows the number of entries on which the scores are based.



Metric	Whole archive (#Entries)	Similar resolution (#Entries, resolution range(Å))
R_{free}	130704	8085 (2.00-2.00)
Clashscore	141614	9178 (2.00-2.00)
Ramachandran outliers	138981	9054 (2.00-2.00)
Sidechain outliers	138945	9053 (2.00-2.00)
RSRZ outliers	127900	7900 (2.00-2.00)

The table below summarises the geometric issues observed across the polymeric chains and their fit to the electron density. The red, orange, yellow and green segments of the lower bar indicate the fraction of residues that contain outliers for ≥ 3 , 2, 1 and 0 types of geometric quality criteria respectively. A grey segment represents the fraction of residues that are not modelled. The numeric value for each fraction is indicated below the corresponding segment, with a dot representing fractions $\leq 5\%$. The upper red bar (where present) indicates the fraction of residues that have poor fit to the electron density. The numeric value is given above the bar.

Mol	Chain	Length	Quality of chain
1	A	306	85% 11% .
1	B	306	85% 11% . .
1	C	306	81% 15% .
1	D	306	83% 13% .

2 Entry composition i

There are 6 unique types of molecules in this entry. The entry contains 9740 atoms, of which 0 are hydrogens and 0 are deuteriums.

In the tables below, the ZeroOcc column contains the number of atoms modelled with zero occupancy, the AltConf column contains the number of residues with at least one atom in alternate conformation and the Trace column contains the number of residues modelled with at most 2 atoms.

- Molecule 1 is a protein called 4-hydroxy-tetrahydrodipicolinate synthase.

Mol	Chain	Residues	Atoms					ZeroOcc	AltConf	Trace
			Total	C	N	O	S			
1	A	296	2299	1465	379	441	14	0	5	0
1	B	295	2292	1458	383	438	13	0	4	0
1	C	295	2270	1444	377	436	13	0	0	0
1	D	295	2288	1458	380	436	14	0	3	0

There are 32 discrepancies between the modelled and reference sequences:

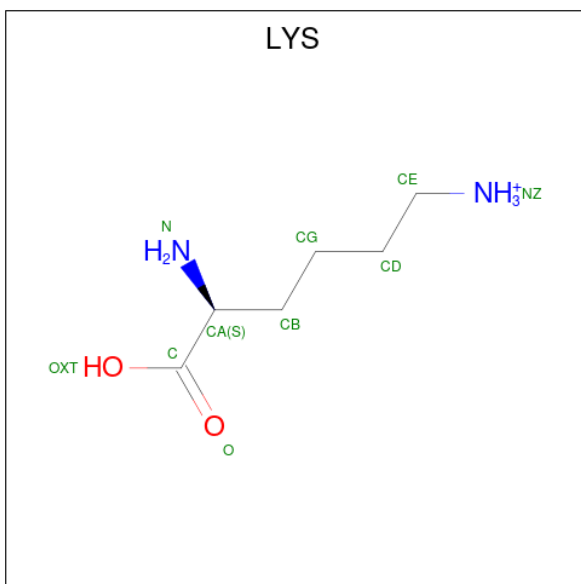
Chain	Residue	Modelled	Actual	Comment	Reference
A	-7	HIS	-	expression tag	UNP Q9PPB4
A	-6	HIS	-	expression tag	UNP Q9PPB4
A	-5	HIS	-	expression tag	UNP Q9PPB4
A	-4	HIS	-	expression tag	UNP Q9PPB4
A	-3	HIS	-	expression tag	UNP Q9PPB4
A	-2	HIS	-	expression tag	UNP Q9PPB4
A	-1	ALA	-	expression tag	UNP Q9PPB4
A	0	SER	-	expression tag	UNP Q9PPB4
B	-7	HIS	-	expression tag	UNP Q9PPB4
B	-6	HIS	-	expression tag	UNP Q9PPB4
B	-5	HIS	-	expression tag	UNP Q9PPB4
B	-4	HIS	-	expression tag	UNP Q9PPB4
B	-3	HIS	-	expression tag	UNP Q9PPB4
B	-2	HIS	-	expression tag	UNP Q9PPB4
B	-1	ALA	-	expression tag	UNP Q9PPB4
B	0	SER	-	expression tag	UNP Q9PPB4
C	-7	HIS	-	expression tag	UNP Q9PPB4
C	-6	HIS	-	expression tag	UNP Q9PPB4
C	-5	HIS	-	expression tag	UNP Q9PPB4
C	-4	HIS	-	expression tag	UNP Q9PPB4
C	-3	HIS	-	expression tag	UNP Q9PPB4

Continued on next page...

Continued from previous page...

Chain	Residue	Modelled	Actual	Comment	Reference
C	-2	HIS	-	expression tag	UNP Q9PPB4
C	-1	ALA	-	expression tag	UNP Q9PPB4
C	0	SER	-	expression tag	UNP Q9PPB4
D	-7	HIS	-	expression tag	UNP Q9PPB4
D	-6	HIS	-	expression tag	UNP Q9PPB4
D	-5	HIS	-	expression tag	UNP Q9PPB4
D	-4	HIS	-	expression tag	UNP Q9PPB4
D	-3	HIS	-	expression tag	UNP Q9PPB4
D	-2	HIS	-	expression tag	UNP Q9PPB4
D	-1	ALA	-	expression tag	UNP Q9PPB4
D	0	SER	-	expression tag	UNP Q9PPB4

- Molecule 2 is LYSINE (three-letter code: LYS) (formula: $C_6H_{15}N_2O_2$).



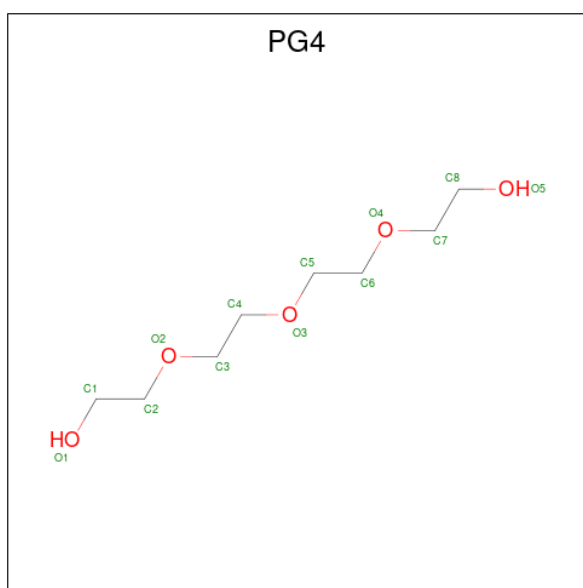
Mol	Chain	Residues	Atoms				ZeroOcc	AltConf
			Total	C	N	O		
2	A	1	Total	C	N	O	0	0
			10	6	2	2		
2	B	1	Total	C	N	O	0	0
			10	6	2	2		
2	C	1	Total	C	N	O	0	0
			10	6	2	2		
2	D	1	Total	C	N	O	0	0
			10	6	2	2		

- Molecule 3 is 1,2-ETHANEDIOL (three-letter code: EDO) (formula: $C_2H_6O_2$).



Mol	Chain	Residues	Atoms			ZeroOcc	AltConf
3	A	1	Total	C	O	0	0
			4	2	2		
3	C	1	Total	C	O	0	0
			4	2	2		

- Molecule 4 is TETRAETHYLENE GLYCOL (three-letter code: PG4) (formula: C₈H₁₈O₅).



Mol	Chain	Residues	Atoms			ZeroOcc	AltConf
4	A	1	Total	C	O	0	0
			13	8	5		

- Molecule 5 is DI(HYDROXYETHYL)ETHER (three-letter code: PEG) (formula: C₄H₁₀O₃).



Mol	Chain	Residues	Atoms	ZeroOcc	AltConf
5	C	1	Total C O 7 4 3	0	0

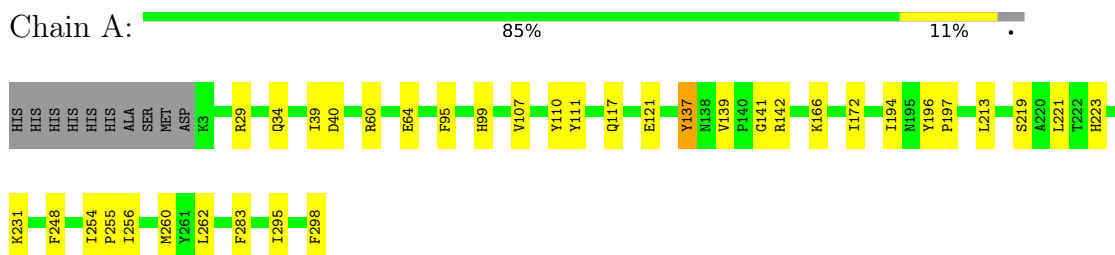
- Molecule 6 is water.

Mol	Chain	Residues	Atoms	ZeroOcc	AltConf
6	A	142	Total O 142 142	0	0
6	B	136	Total O 136 136	0	0
6	C	143	Total O 143 143	0	0
6	D	102	Total O 102 102	0	0

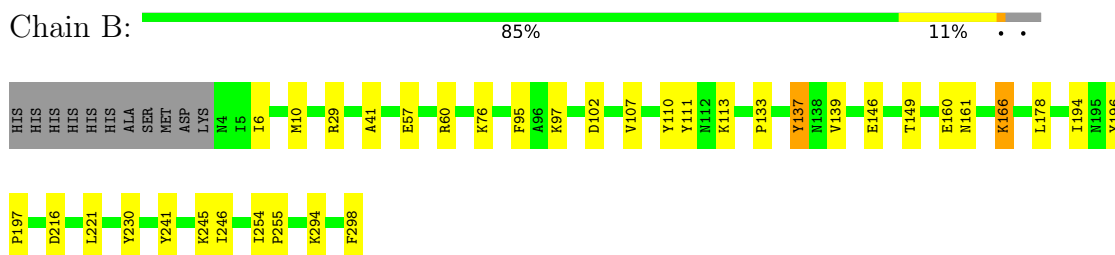
3 Residue-property plots [i](#)

These plots are drawn for all protein, RNA, DNA and oligosaccharide chains in the entry. The first graphic for a chain summarises the proportions of the various outlier classes displayed in the second graphic. The second graphic shows the sequence view annotated by issues in geometry and electron density. Residues are color-coded according to the number of geometric quality criteria for which they contain at least one outlier: green = 0, yellow = 1, orange = 2 and red = 3 or more. A red dot above a residue indicates a poor fit to the electron density ($RSRZ > 2$). Stretches of 2 or more consecutive residues without any outlier are shown as a green connector. Residues present in the sample, but not in the model, are shown in grey.

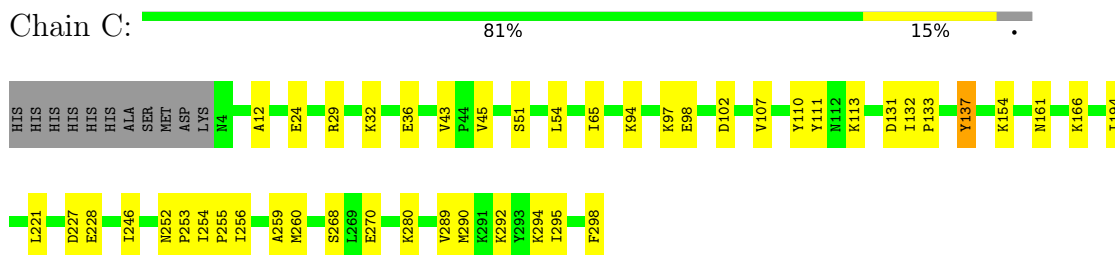
- Molecule 1: 4-hydroxy-tetrahydrodipicolinate synthase



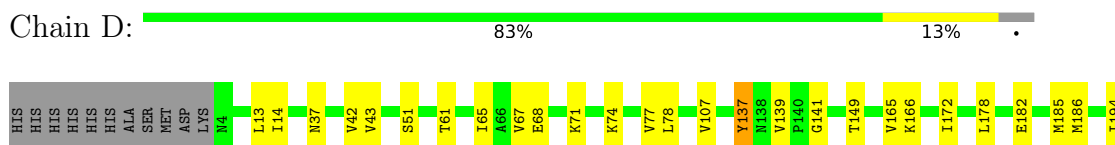
- Molecule 1: 4-hydroxy-tetrahydrodipicolinate synthase



- Molecule 1: 4-hydroxy-tetrahydrodipicolinate synthase



- Molecule 1: 4-hydroxy-tetrahydrodipicolinate synthase





4 Data and refinement statistics

Property	Value	Source
Space group	P 1 21 1	Depositor
Cell constants a, b, c, α , β , γ	78.64Å 96.99Å 79.56Å 90.00° 111.53° 90.00°	Depositor
Resolution (Å)	48.49 – 2.00 48.50 – 2.00	Depositor EDS
% Data completeness (in resolution range)	97.7 (48.49-2.00) 97.7 (48.50-2.00)	Depositor EDS
R_{merge}	0.08	Depositor
R_{sym}	(Not available)	Depositor
$\langle I/\sigma(I) \rangle$ ¹	3.29 (at 2.00Å)	Xtrriage
Refinement program	PHENIX 1.7.1_743	Depositor
R, R_{free}	0.165 , 0.204 0.162 , 0.199	Depositor DCC
R_{free} test set	3668 reflections (5.00%)	wwPDB-VP
Wilson B-factor (Å ²)	21.2	Xtrriage
Anisotropy	0.473	Xtrriage
Bulk solvent k_{sol} (e/Å ³), B_{sol} (Å ²)	0.38 , 54.4	EDS
L-test for twinning ²	$\langle L \rangle = 0.48$, $\langle L^2 \rangle = 0.31$	Xtrriage
Estimated twinning fraction	0.027 for l,-k,h	Xtrriage
F_o, F_c correlation	0.96	EDS
Total number of atoms	9740	wwPDB-VP
Average B, all atoms (Å ²)	24.0	wwPDB-VP

Xtrriage's analysis on translational NCS is as follows: *The largest off-origin peak in the Patterson function is 4.64% of the height of the origin peak. No significant pseudotranslation is detected.*

¹Intensities estimated from amplitudes.

²Theoretical values of $\langle |L| \rangle$, $\langle L^2 \rangle$ for acentric reflections are 0.5, 0.333 respectively for untwinned datasets, and 0.375, 0.2 for perfectly twinned datasets.

5 Model quality [i](#)

5.1 Standard geometry [i](#)

Bond lengths and bond angles in the following residue types are not validated in this section: KPI, EDO, PEG, PG4

The Z score for a bond length (or angle) is the number of standard deviations the observed value is removed from the expected value. A bond length (or angle) with $|Z| > 5$ is considered an outlier worth inspection. RMSZ is the root-mean-square of all Z scores of the bond lengths (or angles).

Mol	Chain	Bond lengths		Bond angles	
		RMSZ	# Z >5	RMSZ	# Z >5
1	A	0.32	0/2338	0.49	0/3160
1	B	0.34	0/2328	0.50	0/3146
1	C	0.34	0/2294	0.49	0/3102
1	D	0.34	0/2321	0.49	0/3137
All	All	0.33	0/9281	0.49	0/12545

There are no bond length outliers.

There are no bond angle outliers.

There are no chirality outliers.

There are no planarity outliers.

5.2 Too-close contacts [i](#)

In the following table, the Non-H and H(model) columns list the number of non-hydrogen atoms and hydrogen atoms in the chain respectively. The H(added) column lists the number of hydrogen atoms added and optimized by MolProbity. The Clashes column lists the number of clashes within the asymmetric unit, whereas Symm-Clashes lists symmetry-related clashes.

Mol	Chain	Non-H	H(model)	H(added)	Clashes	Symm-Clashes
1	A	2299	0	2351	24	0
1	B	2292	0	2342	26	0
1	C	2270	0	2306	32	0
1	D	2288	0	2339	27	0
2	A	10	0	12	0	0
2	B	10	0	12	0	0
2	C	10	0	12	1	0
2	D	10	0	12	0	0
3	A	4	0	6	0	0

Continued on next page...

Continued from previous page...

Mol	Chain	Non-H	H(model)	H(added)	Clashes	Symm-Clashes
3	C	4	0	6	0	0
4	A	13	0	18	0	0
5	C	7	0	10	3	0
6	A	142	0	0	2	0
6	B	136	0	0	0	0
6	C	143	0	0	0	0
6	D	102	0	0	2	0
All	All	9740	0	9426	102	0

The all-atom clashscore is defined as the number of clashes found per 1000 atoms (including hydrogen atoms). The all-atom clashscore for this structure is 5.

All (102) close contacts within the same asymmetric unit are listed below, sorted by their clash magnitude.

Atom-1	Atom-2	Interatomic distance (Å)	Clash overlap (Å)
1:C:24:GLU:HG2	1:C:65:ILE:HD11	1.66	0.78
1:D:107:VAL:HA	1:D:137:TYR:HB3	1.66	0.78
1:A:172[A]:ILE:HG23	1:C:194:ILE:HG21	1.70	0.72
1:A:248:PHE:HZ	6:A:539:HOH:O	1.72	0.72
1:C:97:LYS:HE2	1:C:131:ASP:OD1	1.94	0.68
1:A:231:LYS:HE2	1:C:228:GLU:OE2	1.95	0.67
1:B:6:ILE:HG23	1:B:76:LYS:HD2	1.74	0.67
1:B:194:ILE:HG21	1:D:172[A]:ILE:HG23	1.74	0.67
1:C:107:VAL:HA	1:C:137:TYR:HB3	1.78	0.65
1:C:154:LYS:HD2	5:C:303:PEG:H21	1.78	0.64
1:B:29:ARG:HG2	1:B:298:PHE:CE1	2.34	0.62
1:D:149:THR:HG23	1:D:178:LEU:HD23	1.82	0.61
1:B:107:VAL:HA	1:B:137:TYR:HB3	1.83	0.61
1:C:246:ILE:HG12	1:C:289:VAL:HG21	1.84	0.60
1:D:182:GLU:O	1:D:185[A]:MET:HG2	2.03	0.59
1:B:57:GLU:OE1	1:B:60[B]:ARG:NH1	2.21	0.58
1:B:241:TYR:OH	1:B:245:LYS:HE3	2.03	0.57
1:A:248:PHE:CZ	6:A:539:HOH:O	2.52	0.57
1:A:107:VAL:HA	1:A:137:TYR:HB3	1.86	0.57
1:C:94:LYS:O	1:C:98:GLU:HG2	2.05	0.56
1:A:221:LEU:C	1:A:221:LEU:HD23	2.25	0.56
1:C:24:GLU:HG2	1:C:65:ILE:CD1	2.33	0.56
1:D:37:ASN:OD1	1:D:296:LYS:HD3	2.05	0.56
1:C:29:ARG:HG2	1:C:298:PHE:CE1	2.41	0.55
1:A:262:LEU:HD21	1:A:283:PHE:CZ	2.43	0.54
1:B:221:LEU:C	1:B:221:LEU:HD23	2.30	0.52

Continued on next page...

Continued from previous page...

Atom-1	Atom-2	Interatomic distance (Å)	Clash overlap (Å)
1:D:196:TYR:HB3	1:D:197:PRO:HD3	1.91	0.51
1:A:221:LEU:HD23	1:A:221:LEU:O	2.11	0.51
1:C:161:ASN:OD1	1:C:161:ASN:N	2.37	0.51
1:C:54:LEU:O	2:C:301:LYS:HE3	2.11	0.51
1:A:196:TYR:HB3	1:A:197:PRO:HD3	1.92	0.51
1:B:160:GLU:HG3	1:B:161:ASN:N	2.25	0.50
1:B:196:TYR:HB3	1:B:197:PRO:HD3	1.93	0.50
1:C:113:LYS:HE2	1:D:141:GLY:O	2.12	0.50
1:C:32:LYS:O	1:C:36:GLU:HG3	2.11	0.50
1:D:254:ILE:HB	1:D:255:PRO:HD3	1.93	0.49
1:A:142:ARG:HG2	1:B:113:LYS:HD2	1.94	0.49
1:C:254:ILE:HB	1:C:255:PRO:HD3	1.96	0.48
1:B:137:TYR:CD1	1:B:166:KPI:HD	2.49	0.48
1:C:290:MET:HG2	1:C:295:ILE:HD11	1.95	0.47
1:B:139:VAL:O	1:B:139:VAL:HG13	2.14	0.47
1:D:51:SER:HB2	6:D:501:HOH:O	2.14	0.47
1:A:95:PHE:CE1	1:A:99:HIS:CE1	3.02	0.47
1:C:294:LYS:HA	1:C:294:LYS:HD3	1.71	0.47
1:A:117:GLN:O	1:A:121:GLU:HG2	2.15	0.47
1:A:256:ILE:O	1:A:260:MET:HG2	2.15	0.47
1:A:34:GLN:OE1	1:A:39:ILE:HG13	2.15	0.47
1:A:40:ASP:OD2	1:A:223:HIS:CE1	2.67	0.47
1:D:13:LEU:HD11	1:D:42:VAL:HB	1.96	0.47
1:C:289:VAL:O	1:C:292:LYS:HG2	2.15	0.46
1:D:262:LEU:HD21	1:D:283:PHE:CZ	2.51	0.46
1:D:43:VAL:HG22	1:D:78:LEU:HB3	1.98	0.46
1:C:97:LYS:HD3	1:C:132:ILE:HG23	1.96	0.45
1:C:259:ALA:HA	1:C:290:MET:HE1	1.99	0.45
1:B:60[B]:ARG:HB3	1:B:95:PHE:CZ	2.51	0.45
1:D:67:VAL:HA	1:D:77:VAL:HG21	1.97	0.45
1:D:61:THR:O	1:D:65:ILE:HG13	2.17	0.45
1:B:10:MET:HG2	1:B:41:ALA:HB3	1.98	0.45
1:B:110:TYR:O	1:B:111:TYR:HB3	2.16	0.45
1:B:254:ILE:HB	1:B:255:PRO:HD3	1.98	0.45
1:D:296:LYS:HE2	1:D:296:LYS:HB3	1.70	0.45
1:B:60[B]:ARG:HD2	1:B:95:PHE:CD1	2.52	0.44
1:B:196:TYR:OH	1:B:230:TYR:HB3	2.17	0.44
1:C:221:LEU:HD23	1:C:221:LEU:C	2.37	0.44
1:A:29:ARG:HG2	1:A:298:PHE:CE1	2.53	0.43
1:B:102:ASP:O	1:B:133:PRO:HD2	2.18	0.43
1:D:252:ASN:OD1	1:D:253:PRO:HA	2.18	0.43

Continued on next page...

Continued from previous page...

Atom-1	Atom-2	Interatomic distance (Å)	Clash overlap (Å)
1:A:172[A]:ILE:HG23	1:C:194:ILE:CG2	2.46	0.43
1:B:60[A]:ARG:HB3	1:B:95:PHE:CZ	2.54	0.43
1:C:45:VAL:HG12	1:C:51:SER:HB3	2.01	0.43
1:D:165:VAL:HG12	1:D:185[A]:MET:CE	2.49	0.43
1:D:186:MET:SD	1:D:204:LYS:HG3	2.58	0.43
1:A:139:VAL:O	1:A:139:VAL:HG13	2.19	0.43
1:C:252:ASN:OD1	1:C:253:PRO:HA	2.19	0.43
1:A:213:LEU:HD11	1:A:295:ILE:HD13	2.00	0.42
1:A:254:ILE:HB	1:A:255:PRO:HD3	2.00	0.42
1:B:97:LYS:C	1:B:97:LYS:HD3	2.39	0.42
1:D:14:ILE:HD13	1:D:260:MET:HG3	2.01	0.42
1:B:216:ASP:OD1	1:B:216:ASP:N	2.51	0.42
1:B:246:ILE:HD12	1:B:246:ILE:HA	1.93	0.42
1:B:294:LYS:HA	1:B:294:LYS:HD3	1.73	0.42
1:D:68:GLU:O	1:D:71:LYS:HB2	2.19	0.42
1:A:60:ARG:HB3	1:A:95:PHE:CZ	2.55	0.42
1:A:194:ILE:C	1:A:197:PRO:HD2	2.39	0.42
1:C:268:SER:OG	1:C:270:GLU:HG3	2.20	0.42
1:D:71:LYS:HD2	6:D:447:HOH:O	2.20	0.41
1:D:280:LYS:HD3	1:D:280:LYS:HA	1.79	0.41
1:C:246:ILE:CG1	1:C:289:VAL:HG21	2.48	0.41
1:D:139:VAL:HG13	1:D:139:VAL:O	2.20	0.41
1:A:141:GLY:O	1:B:113:LYS:HE2	2.21	0.41
1:B:149:THR:HG23	1:B:178:LEU:HD23	2.02	0.41
1:C:12:ALA:HA	1:C:43:VAL:HB	2.02	0.41
1:D:221:LEU:C	1:D:221:LEU:HD23	2.40	0.41
1:D:262:LEU:HD21	1:D:283:PHE:CE2	2.56	0.41
1:C:102:ASP:O	1:C:133:PRO:HD2	2.20	0.41
1:D:107:VAL:HB	1:D:137:TYR:CD2	2.56	0.41
1:D:194:ILE:C	1:D:197:PRO:HD2	2.41	0.41
1:A:110:TYR:O	1:A:111:TYR:HB3	2.22	0.40
1:C:154:LYS:HZ3	5:C:303:PEG:H22	1.86	0.40
1:C:154:LYS:NZ	5:C:303:PEG:H22	2.37	0.40
1:C:256:ILE:O	1:C:260:MET:HG2	2.21	0.40
1:C:110:TYR:O	1:C:111:TYR:HB3	2.21	0.40

There are no symmetry-related clashes.

5.3 Torsion angles [i](#)

5.3.1 Protein backbone [i](#)

In the following table, the Percentiles column shows the percent Ramachandran outliers of the chain as a percentile score with respect to all X-ray entries followed by that with respect to entries of similar resolution.

The Analysed column shows the number of residues for which the backbone conformation was analysed, and the total number of residues.

Mol	Chain	Analysed	Favoured	Allowed	Outliers	Percentiles	
1	A	298/306 (97%)	294 (99%)	4 (1%)	0	100	100
1	B	296/306 (97%)	293 (99%)	3 (1%)	0	100	100
1	C	292/306 (95%)	288 (99%)	4 (1%)	0	100	100
1	D	295/306 (96%)	290 (98%)	5 (2%)	0	100	100
All	All	1181/1224 (96%)	1165 (99%)	16 (1%)	0	100	100

There are no Ramachandran outliers to report.

5.3.2 Protein sidechains [i](#)

In the following table, the Percentiles column shows the percent sidechain outliers of the chain as a percentile score with respect to all X-ray entries followed by that with respect to entries of similar resolution.

The Analysed column shows the number of residues for which the sidechain conformation was analysed, and the total number of residues.

Mol	Chain	Analysed	Rotameric	Outliers	Percentiles	
1	A	253/257 (98%)	250 (99%)	3 (1%)	71	76
1	B	251/257 (98%)	249 (99%)	2 (1%)	81	86
1	C	247/257 (96%)	244 (99%)	3 (1%)	71	76
1	D	250/257 (97%)	248 (99%)	2 (1%)	81	86
All	All	1001/1028 (97%)	991 (99%)	10 (1%)	76	81

All (10) residues with a non-rotameric sidechain are listed below:

Mol	Chain	Res	Type
1	A	64	GLU
1	A	137	TYR

Continued on next page...

Continued from previous page...

Mol	Chain	Res	Type
1	A	219	SER
1	B	137	TYR
1	B	146	GLU
1	C	137	TYR
1	C	227	ASP
1	C	280	LYS
1	D	74	LYS
1	D	137	TYR

Sometimes sidechains can be flipped to improve hydrogen bonding and reduce clashes. There are no such sidechains identified.

5.3.3 RNA [i](#)

There are no RNA molecules in this entry.

5.4 Non-standard residues in protein, DNA, RNA chains [i](#)

4 non-standard protein/DNA/RNA residues are modelled in this entry.

In the following table, the Counts columns list the number of bonds (or angles) for which Mogul statistics could be retrieved, the number of bonds (or angles) that are observed in the model and the number of bonds (or angles) that are defined in the Chemical Component Dictionary. The Link column lists molecule types, if any, to which the group is linked. The Z score for a bond length (or angle) is the number of standard deviations the observed value is removed from the expected value. A bond length (or angle) with $|Z| > 2$ is considered an outlier worth inspection. RMSZ is the root-mean-square of all Z scores of the bond lengths (or angles).

Mol	Type	Chain	Res	Link	Bond lengths			Bond angles		
					Counts	RMSZ	# Z > 2	Counts	RMSZ	# Z > 2
1	KPI	B	166	1	11,13,14	1.42	1 (9%)	10,15,17	1.95	3 (30%)
1	KPI	C	166	1	11,13,14	1.53	1 (9%)	10,15,17	2.45	3 (30%)
1	KPI	A	166	1	11,13,14	1.37	1 (9%)	10,15,17	1.76	2 (20%)
1	KPI	D	166	1	11,13,14	1.31	1 (9%)	10,15,17	1.97	2 (20%)

In the following table, the Chirals column lists the number of chiral outliers, the number of chiral centers analysed, the number of these observed in the model and the number defined in the Chemical Component Dictionary. Similar counts are reported in the Torsion and Rings columns. '2' means no outliers of that kind were identified.

Mol	Type	Chain	Res	Link	Chirals	Torsions	Rings
1	KPI	B	166	1	-	2/13/14/16	-
1	KPI	C	166	1	-	4/13/14/16	-
1	KPI	A	166	1	-	3/13/14/16	-
1	KPI	D	166	1	-	2/13/14/16	-

All (4) bond length outliers are listed below:

Mol	Chain	Res	Type	Atoms	Z	Observed(Å)	Ideal(Å)
1	C	166	KPI	CX2-CX1	3.94	1.54	1.49
1	B	166	KPI	CX2-CX1	3.68	1.54	1.49
1	A	166	KPI	CX2-CX1	3.19	1.53	1.49
1	D	166	KPI	CX2-CX1	2.97	1.53	1.49

All (10) bond angle outliers are listed below:

Mol	Chain	Res	Type	Atoms	Z	Observed(°)	Ideal(°)
1	C	166	KPI	C1-CX1-CX2	-5.77	112.56	118.17
1	D	166	KPI	C1-CX1-CX2	-5.14	113.17	118.17
1	B	166	KPI	C1-CX1-CX2	-4.31	113.98	118.17
1	A	166	KPI	C1-CX1-CX2	-4.06	114.22	118.17
1	C	166	KPI	CX2-CX1-NZ	3.22	122.83	114.98
1	B	166	KPI	CX2-CX1-NZ	2.93	122.12	114.98
1	A	166	KPI	CX2-CX1-NZ	2.67	121.48	114.98
1	D	166	KPI	CX2-CX1-NZ	2.37	120.76	114.98
1	B	166	KPI	CG-CD-CE	2.20	121.22	113.57
1	C	166	KPI	CG-CD-CE	2.19	121.19	113.57

There are no chirality outliers.

All (11) torsion outliers are listed below:

Mol	Chain	Res	Type	Atoms
1	A	166	KPI	C1-CX1-NZ-CE
1	B	166	KPI	C1-CX1-NZ-CE
1	C	166	KPI	C1-CX1-NZ-CE
1	C	166	KPI	CX2-CX1-NZ-CE
1	C	166	KPI	NZ-CX1-CX2-O1
1	D	166	KPI	C1-CX1-NZ-CE
1	D	166	KPI	CX2-CX1-NZ-CE
1	C	166	KPI	NZ-CX1-CX2-O2
1	B	166	KPI	CX2-CX1-NZ-CE
1	A	166	KPI	NZ-CX1-CX2-O1

Continued on next page...

Continued from previous page...

Mol	Chain	Res	Type	Atoms
1	A	166	KPI	NZ-CX1-CX2-O2

There are no ring outliers.

1 monomer is involved in 1 short contact:

Mol	Chain	Res	Type	Clashes	Symm-Clashes
1	B	166	KPI	1	0

5.5 Carbohydrates [i](#)

There are no monosaccharides in this entry.

5.6 Ligand geometry [i](#)

8 ligands are modelled in this entry.

In the following table, the Counts columns list the number of bonds (or angles) for which Mogul statistics could be retrieved, the number of bonds (or angles) that are observed in the model and the number of bonds (or angles) that are defined in the Chemical Component Dictionary. The Link column lists molecule types, if any, to which the group is linked. The Z score for a bond length (or angle) is the number of standard deviations the observed value is removed from the expected value. A bond length (or angle) with $|Z| > 2$ is considered an outlier worth inspection. RMSZ is the root-mean-square of all Z scores of the bond lengths (or angles).

Mol	Type	Chain	Res	Link	Bond lengths			Bond angles		
					Counts	RMSZ	# Z > 2	Counts	RMSZ	# Z > 2
3	EDO	A	302	-	3,3,3	0.49	0	2,2,2	0.30	0
5	PEG	C	303	-	6,6,6	0.62	0	5,5,5	1.45	1 (20%)
2	LYS	C	301	-	8,9,9	0.74	0	9,10,10	1.14	2 (22%)
3	EDO	C	302	-	3,3,3	0.49	0	2,2,2	0.33	0
4	PG4	A	303	-	12,12,12	0.63	0	11,11,11	1.53	0
2	LYS	D	301	-	8,9,9	0.72	0	9,10,10	1.26	2 (22%)
2	LYS	B	301	-	8,9,9	0.82	1 (12%)	9,10,10	1.18	2 (22%)
2	LYS	A	301	-	8,9,9	0.84	1 (12%)	9,10,10	1.27	2 (22%)

In the following table, the Chirals column lists the number of chiral outliers, the number of chiral centers analysed, the number of these observed in the model and the number defined in the Chemical Component Dictionary. Similar counts are reported in the Torsion and Rings columns. '2' means no outliers of that kind were identified.

Mol	Type	Chain	Res	Link	Chirals	Torsions	Rings
3	EDO	A	302	-	-	1/1/1/1	-
5	PEG	C	303	-	-	2/4/4/4	-
2	LYS	C	301	-	-	0/9/9/9	-
3	EDO	C	302	-	-	1/1/1/1	-
4	PG4	A	303	-	-	5/10/10/10	-
2	LYS	D	301	-	-	1/9/9/9	-
2	LYS	B	301	-	-	0/9/9/9	-
2	LYS	A	301	-	-	1/9/9/9	-

All (2) bond length outliers are listed below:

Mol	Chain	Res	Type	Atoms	Z	Observed(Å)	Ideal(Å)
2	A	301	LYS	OXT-C	-2.11	1.23	1.30
2	B	301	LYS	OXT-C	-2.09	1.23	1.30

All (9) bond angle outliers are listed below:

Mol	Chain	Res	Type	Atoms	Z	Observed(°)	Ideal(°)
2	A	301	LYS	OXT-C-O	-2.68	118.00	124.09
2	D	301	LYS	OXT-C-CA	2.57	122.13	113.38
2	A	301	LYS	OXT-C-CA	2.38	121.50	113.38
2	D	301	LYS	OXT-C-O	-2.36	118.74	124.09
2	C	301	LYS	OXT-C-CA	2.32	121.30	113.38
2	B	301	LYS	OXT-C-O	-2.30	118.87	124.09
2	B	301	LYS	OXT-C-CA	2.27	121.10	113.38
5	C	303	PEG	O2-C2-C1	2.23	119.88	110.07
2	C	301	LYS	OXT-C-O	-2.03	119.48	124.09

There are no chirality outliers.

All (11) torsion outliers are listed below:

Mol	Chain	Res	Type	Atoms
4	A	303	PG4	O3-C5-C6-O4
5	C	303	PEG	O2-C3-C4-O4
4	A	303	PG4	O2-C3-C4-O3
2	D	301	LYS	C-CA-CB-CG
4	A	303	PG4	C5-C6-O4-C7
4	A	303	PG4	C1-C2-O2-C3
5	C	303	PEG	C4-C3-O2-C2
3	A	302	EDO	O1-C1-C2-O2
3	C	302	EDO	O1-C1-C2-O2
4	A	303	PG4	C8-C7-O4-C6

Continued on next page...

Continued from previous page...

Mol	Chain	Res	Type	Atoms
2	A	301	LYS	CG-CD-CE-NZ

There are no ring outliers.

2 monomers are involved in 4 short contacts:

Mol	Chain	Res	Type	Clashes	Symm-Clashes
5	C	303	PEG	3	0
2	C	301	LYS	1	0

5.7 Other polymers [i](#)

There are no such residues in this entry.

5.8 Polymer linkage issues [i](#)

There are no chain breaks in this entry.

6 Fit of model and data [i](#)

6.1 Protein, DNA and RNA chains [i](#)

In the following table, the column labelled ‘#RSRZ > 2’ contains the number (and percentage) of RSRZ outliers, followed by percent RSRZ outliers for the chain as percentile scores relative to all X-ray entries and entries of similar resolution. The OWAB column contains the minimum, median, 95th percentile and maximum values of the occupancy-weighted average B-factor per residue. The column labelled ‘Q < 0.9’ lists the number of (and percentage) of residues with an average occupancy less than 0.9.

Mol	Chain	Analysed	<RSRZ>	#RSRZ>2	OWAB(Å ²)	Q<0.9
1	A	295/306 (96%)	-0.62	0 100 100	13, 21, 40, 50	0
1	B	294/306 (96%)	-0.64	0 100 100	13, 21, 37, 51	2 (0%)
1	C	294/306 (96%)	-0.69	0 100 100	13, 20, 35, 49	0
1	D	294/306 (96%)	-0.51	1 (0%) 94 93	13, 24, 43, 53	1 (0%)
All	All	1177/1224 (96%)	-0.61	1 (0%) 95 95	13, 22, 39, 53	3 (0%)

All (1) RSRZ outliers are listed below:

Mol	Chain	Res	Type	RSRZ
1	D	231	LYS	2.1

6.2 Non-standard residues in protein, DNA, RNA chains [i](#)

In the following table, the Atoms column lists the number of modelled atoms in the group and the number defined in the chemical component dictionary. The B-factors column lists the minimum, median, 95th percentile and maximum values of B factors of atoms in the group. The column labelled ‘Q < 0.9’ lists the number of atoms with occupancy less than 0.9.

Mol	Type	Chain	Res	Atoms	RSCC	RSR	B-factors(Å ²)	Q<0.9
1	KPI	C	166	14/15	0.94	0.10	13,21,30,31	0
1	KPI	B	166	14/15	0.96	0.08	15,23,27,28	0
1	KPI	D	166	14/15	0.96	0.09	15,22,26,27	0
1	KPI	A	166	14/15	0.98	0.08	13,16,20,22	0

6.3 Carbohydrates [i](#)

There are no monosaccharides in this entry.

6.4 Ligands [i](#)

In the following table, the Atoms column lists the number of modelled atoms in the group and the number defined in the chemical component dictionary. The B-factors column lists the minimum, median, 95th percentile and maximum values of B factors of atoms in the group. The column labelled 'Q<0.9' lists the number of atoms with occupancy less than 0.9.

Mol	Type	Chain	Res	Atoms	RSCC	RSR	B-factors(Å ²)	Q<0.9
3	EDO	C	302	4/4	0.87	0.14	35,38,45,49	0
4	PG4	A	303	13/13	0.89	0.12	31,40,53,53	0
3	EDO	A	302	4/4	0.91	0.09	33,40,46,49	0
5	PEG	C	303	7/7	0.94	0.10	30,38,40,49	0
2	LYS	C	301	10/10	0.95	0.11	11,15,19,20	0
2	LYS	A	301	10/10	0.96	0.12	10,14,17,18	0
2	LYS	D	301	10/10	0.96	0.09	14,18,22,25	0
2	LYS	B	301	10/10	0.97	0.09	12,16,19,20	0

6.5 Other polymers [i](#)

There are no such residues in this entry.