



Full wwPDB X-ray Structure Validation Report ⓘ

Jun 12, 2024 – 01:13 AM EDT

PDB ID : 1M4I
Title : Aminoglycoside 2'-N-acetyltransferase from Mycobacterium tuberculosis-
Complex with Coenzyme A and Kanamycin A
Authors : Vetting, M.W.; Hegde, S.S.; Javid-Majd, F.; Blanchard, J.S.; Roderick, S.L.
Deposited on : 2002-07-02
Resolution : 1.50 Å(reported)

This is a Full wwPDB X-ray Structure Validation Report for a publicly released PDB entry.

We welcome your comments at validation@mail.wwpdb.org

A user guide is available at

<https://www.wwpdb.org/validation/2017/XrayValidationReportHelp>

with specific help available everywhere you see the ⓘ symbol.

The types of validation reports are described at

<http://www.wwpdb.org/validation/2017/FAQs#types>.

The following versions of software and data (see [references ⓘ](#)) were used in the production of this report:

MolProbity : 4.02b-467
Mogul : 2022.3.0, CSD as543be (2022)
Xtrriage (Phenix) : 1.20.1
EDS : 2.36.2
buster-report : 1.1.7 (2018)
Percentile statistics : 20191225.v01 (using entries in the PDB archive December 25th 2019)
Refmac : 5.8.0158
CCP4 : 7.0.044 (Gargrove)
Ideal geometry (proteins) : Engh & Huber (2001)
Ideal geometry (DNA, RNA) : Parkinson et al. (1996)
Validation Pipeline (wwPDB-VP) : 2.36.2

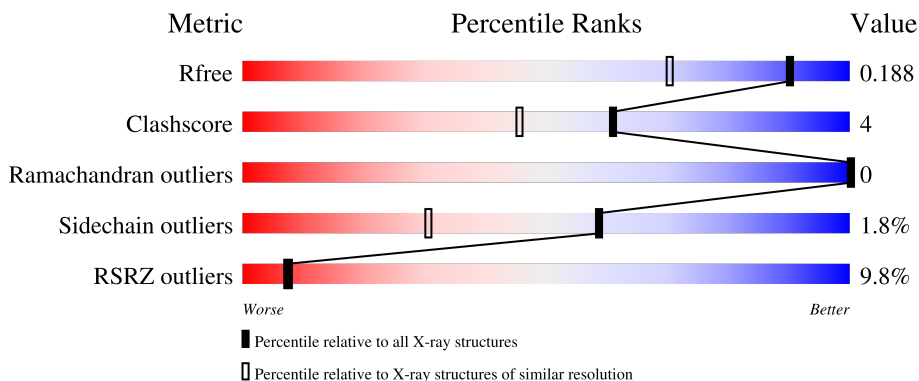
1 Overall quality at a glance

The following experimental techniques were used to determine the structure:

X-RAY DIFFRACTION

The reported resolution of this entry is 1.50 Å.

Percentile scores (ranging between 0-100) for global validation metrics of the entry are shown in the following graphic. The table shows the number of entries on which the scores are based.



Metric	Whole archive (#Entries)	Similar resolution (#Entries, resolution range(Å))
R_{free}	130704	2936 (1.50-1.50)
Clashscore	141614	3144 (1.50-1.50)
Ramachandran outliers	138981	3066 (1.50-1.50)
Sidechain outliers	138945	3064 (1.50-1.50)
RSRZ outliers	127900	2884 (1.50-1.50)

The table below summarises the geometric issues observed across the polymeric chains and their fit to the electron density. The red, orange, yellow and green segments of the lower bar indicate the fraction of residues that contain outliers for ≥ 3 , 2, 1 and 0 types of geometric quality criteria respectively. A grey segment represents the fraction of residues that are not modelled. The numeric value for each fraction is indicated below the corresponding segment, with a dot representing fractions $\leq 5\%$. The upper red bar (where present) indicates the fraction of residues that have poor fit to the electron density. The numeric value is given above the bar.

Mol	Chain	Length	Quality of chain
1	A	181	 8% 94% 6% •
1	B	181	 12% 87% 9% • •

2 Entry composition [i](#)

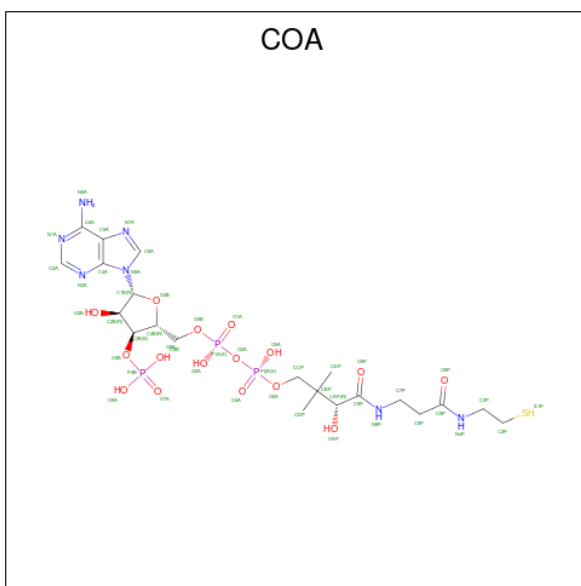
There are 5 unique types of molecules in this entry. The entry contains 3366 atoms, of which 0 are hydrogens and 0 are deuteriums.

In the tables below, the ZeroOcc column contains the number of atoms modelled with zero occupancy, the AltConf column contains the number of residues with at least one atom in alternate conformation and the Trace column contains the number of residues modelled with at most 2 atoms.

- Molecule 1 is a protein called Aminoglycoside 2'-N-acetyltransferase.

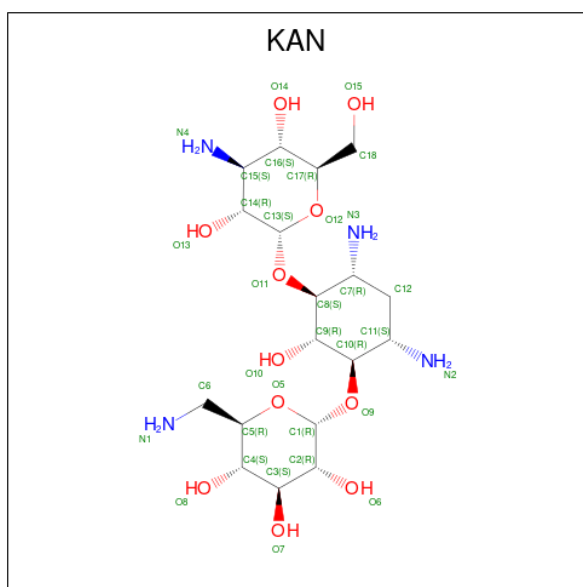
Mol	Chain	Residues	Atoms					ZeroOcc	AltConf	Trace
			Total	C	N	O	S			
1	A	181	Total	C	N	O	S	0	0	0
			1412	884	265	256	7			
1	B	176	Total	C	N	O	S	0	0	0
			1371	859	257	249	6			

- Molecule 2 is COENZYME A (three-letter code: COA) (formula: $C_{21}H_{36}N_7O_{16}P_3S$).



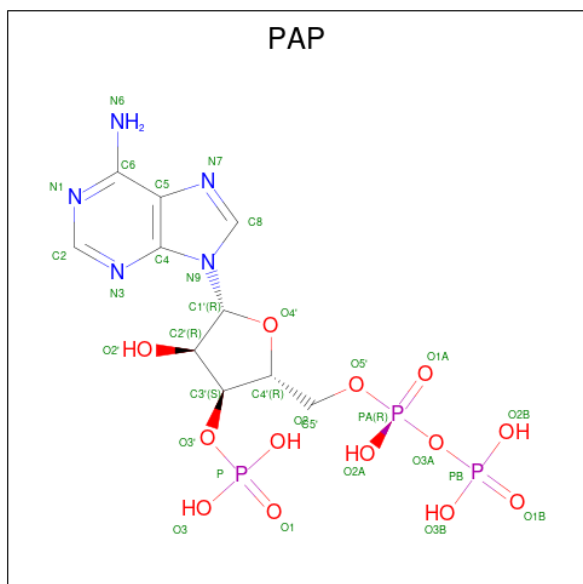
Mol	Chain	Residues	Atoms					ZeroOcc	AltConf	
			Total	C	N	O	P			S
2	A	1	Total	C	N	O	P	S	0	0
			48	21	7	16	3	1		
2	B	1	Total	C	N	O	P	S	0	0
			48	21	7	16	3	1		

- Molecule 3 is KANAMYCIN A (three-letter code: KAN) (formula: $C_{18}H_{36}N_4O_{11}$).



Mol	Chain	Residues	Atoms					ZeroOcc	AltConf
3	A	1	Total	C	N	O	0	0	
			33	18	4	11			
3	B	1	Total	C	N	O	0	0	
			33	18	4	11			

- Molecule 4 is 3'-PHOSPHATE-ADENOSINE-5'-DIPHOSPHATE (three-letter code: PAP) (formula: C₁₀H₁₆N₅O₁₃P₃).



Mol	Chain	Residues	Atoms					ZeroOcc	AltConf
4	A	1	Total	C	N	O	P	0	0
			31	10	5	13	3		

- Molecule 5 is water.

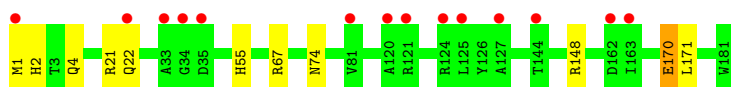
Mol	Chain	Residues	Atoms		ZeroOcc	AltConf
5	A	213	Total 213	O 213	0	0
5	B	177	Total 177	O 177	0	0

3 Residue-property plots [i](#)


These plots are drawn for all protein, RNA, DNA and oligosaccharide chains in the entry. The first graphic for a chain summarises the proportions of the various outlier classes displayed in the second graphic. The second graphic shows the sequence view annotated by issues in geometry and electron density. Residues are color-coded according to the number of geometric quality criteria for which they contain at least one outlier: green = 0, yellow = 1, orange = 2 and red = 3 or more. A red dot above a residue indicates a poor fit to the electron density ($RSRZ > 2$). Stretches of 2 or more consecutive residues without any outlier are shown as a green connector. Residues present in the sample, but not in the model, are shown in grey.

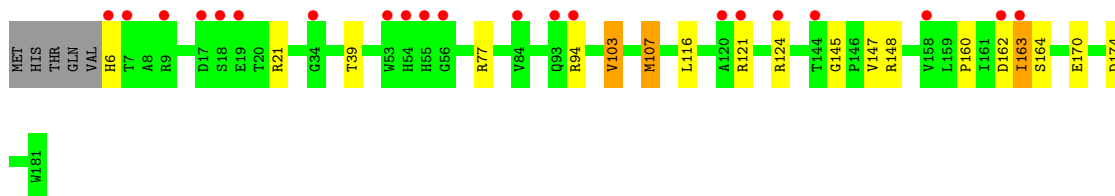
- Molecule 1: Aminoglycoside 2'-N-acetyltransferase

Chain A: 



- Molecule 1: Aminoglycoside 2'-N-acetyltransferase

Chain B: 



4 Data and refinement statistics

Property	Value	Source
Space group	P 21 21 21	Depositor
Cell constants a, b, c, α , β , γ	48.80Å 86.60Å 98.30Å 90.00° 90.00° 90.00°	Depositor
Resolution (Å)	24.09 – 1.50 24.09 – 1.50	Depositor EDS
% Data completeness (in resolution range)	92.4 (24.09-1.50) 92.6 (24.09-1.50)	Depositor EDS
R_{merge}	(Not available)	Depositor
R_{sym}	0.03	Depositor
$\langle I/\sigma(I) \rangle$ ¹	5.29 (at 1.50Å)	Xtrriage
Refinement program	CNS 1.0	Depositor
R, R_{free}	0.183 , 0.205 0.165 , 0.188	Depositor DCC
R_{free} test set	3145 reflections (5.04%)	wwPDB-VP
Wilson B-factor (Å ²)	14.9	Xtrriage
Anisotropy	0.015	Xtrriage
Bulk solvent k_{sol} (e/Å ³), B_{sol} (Å ²)	0.41 , 56.6	EDS
L-test for twinning ²	$\langle L \rangle = 0.47$, $\langle L^2 \rangle = 0.30$	Xtrriage
Estimated twinning fraction	No twinning to report.	Xtrriage
F_o, F_c correlation	0.96	EDS
Total number of atoms	3366	wwPDB-VP
Average B, all atoms (Å ²)	17.0	wwPDB-VP

Xtrriage's analysis on translational NCS is as follows: *The largest off-origin peak in the Patterson function is 4.54% of the height of the origin peak. No significant pseudotranslation is detected.*

¹Intensities estimated from amplitudes.

²Theoretical values of $\langle |L| \rangle$, $\langle L^2 \rangle$ for acentric reflections are 0.5, 0.333 respectively for untwinned datasets, and 0.375, 0.2 for perfectly twinned datasets.

5 Model quality [i](#)

5.1 Standard geometry [i](#)

Bond lengths and bond angles in the following residue types are not validated in this section: PAP, COA, KAN

The Z score for a bond length (or angle) is the number of standard deviations the observed value is removed from the expected value. A bond length (or angle) with $|Z| > 5$ is considered an outlier worth inspection. RMSZ is the root-mean-square of all Z scores of the bond lengths (or angles).

Mol	Chain	Bond lengths		Bond angles	
		RMSZ	# Z >5	RMSZ	# Z >5
1	A	1.14	0/1447	1.13	4/1971 (0.2%)
1	B	1.15	3/1405 (0.2%)	1.22	10/1914 (0.5%)
All	All	1.15	3/2852 (0.1%)	1.18	14/3885 (0.4%)

All (3) bond length outliers are listed below:

Mol	Chain	Res	Type	Atoms	Z	Observed(Å)	Ideal(Å)
1	B	107	MET	CB-CG	11.61	1.88	1.51
1	B	148	ARG	CB-CG	6.77	1.70	1.52
1	B	107	MET	CG-SD	6.16	1.97	1.81

All (14) bond angle outliers are listed below:

Mol	Chain	Res	Type	Atoms	Z	Observed(°)	Ideal(°)
1	A	21	ARG	NE-CZ-NH2	-11.03	114.78	120.30
1	B	107	MET	CB-CG-SD	-10.50	80.89	112.40
1	A	148	ARG	NE-CZ-NH1	9.76	125.18	120.30
1	B	107	MET	CG-SD-CE	-8.49	86.61	100.20
1	B	77	ARG	NE-CZ-NH2	-8.01	116.30	120.30
1	A	148	ARG	NE-CZ-NH2	-7.44	116.58	120.30
1	B	39	THR	CA-CB-CG2	-6.75	102.94	112.40
1	B	103	VAL	CG1-CB-CG2	6.51	121.32	110.90
1	B	174	ASP	CB-CG-OD2	-6.41	112.53	118.30
1	B	21	ARG	NE-CZ-NH1	6.37	123.48	120.30
1	B	148	ARG	NE-CZ-NH2	-5.29	117.66	120.30
1	B	77	ARG	NE-CZ-NH1	5.15	122.88	120.30
1	B	164	SER	N-CA-C	-5.03	97.43	111.00
1	A	67	ARG	NE-CZ-NH1	5.02	122.81	120.30

There are no chirality outliers.

There are no planarity outliers.

5.2 Too-close contacts

In the following table, the Non-H and H(model) columns list the number of non-hydrogen atoms and hydrogen atoms in the chain respectively. The H(added) column lists the number of hydrogen atoms added and optimized by MolProbity. The Clashes column lists the number of clashes within the asymmetric unit, whereas Symm-Clashes lists symmetry-related clashes.

Mol	Chain	Non-H	H(model)	H(added)	Clashes	Symm-Clashes
1	A	1412	0	1374	9	0
1	B	1371	0	1331	16	0
2	A	48	0	32	1	0
2	B	48	0	32	0	0
3	A	33	0	36	0	0
3	B	33	0	36	0	0
4	A	31	0	11	1	0
5	A	213	0	0	6	0
5	B	177	0	0	4	0
All	All	3366	0	2852	26	0

The all-atom clashscore is defined as the number of clashes found per 1000 atoms (including hydrogen atoms). The all-atom clashscore for this structure is 4.

All (26) close contacts within the same asymmetric unit are listed below, sorted by their clash magnitude.

Atom-1	Atom-2	Interatomic distance (Å)	Clash overlap (Å)
1:B:107:MET:CG	1:B:107:MET:CB	1.88	1.48
1:B:107:MET:CB	1:B:107:MET:SD	2.50	1.00
1:A:74:ASN:HB2	5:A:784:HOH:O	1.80	0.81
1:A:2:HIS:HD2	1:A:4:GLN:H	1.29	0.78
1:B:124:ARG:HG3	5:B:679:HOH:O	1.87	0.75
1:B:162:ASP:O	1:B:163:ILE:HG23	1.86	0.75
1:B:170:GLU:HG3	5:B:743:HOH:O	1.86	0.75
1:B:107:MET:SD	1:B:107:MET:HB2	2.27	0.74
1:A:55:HIS:HD2	4:A:602:PAP:O2	1.73	0.72
1:B:163:ILE:N	1:B:163:ILE:HD12	2.05	0.71
2:A:600:COA:S1P	5:A:779:HOH:O	2.53	0.67
1:A:2:HIS:CD2	1:A:4:GLN:H	2.11	0.66
1:B:94:ARG:HD2	5:B:759:HOH:O	1.98	0.64
1:A:170:GLU:HG3	1:A:171:LEU:N	2.16	0.58
1:B:163:ILE:HD12	1:B:163:ILE:H	1.67	0.57

Continued on next page...

Continued from previous page...

Atom-1	Atom-2	Interatomic distance (Å)	Clash overlap (Å)
1:A:74:ASN:CB	5:A:784:HOH:O	2.47	0.52
1:B:162:ASP:OD2	5:B:693:HOH:O	2.20	0.48
1:A:74:ASN:CG	5:A:784:HOH:O	2.53	0.46
1:B:160:PRO:HB3	1:B:163:ILE:HD13	1.99	0.44
1:B:103:VAL:HG13	1:B:107:MET:CE	2.48	0.43
1:B:145:GLY:O	1:B:147:VAL:HG23	2.19	0.43
1:A:74:ASN:ND2	5:A:784:HOH:O	2.51	0.42
1:B:162:ASP:O	1:B:163:ILE:CG2	2.62	0.41
1:B:107:MET:CG	1:B:107:MET:CA	2.86	0.41
1:B:116:LEU:C	1:B:116:LEU:HD12	2.42	0.40
1:A:22:GLN:HG3	5:A:782:HOH:O	2.20	0.40

There are no symmetry-related clashes.

5.3 Torsion angles [i](#)

5.3.1 Protein backbone [i](#)

In the following table, the Percentiles column shows the percent Ramachandran outliers of the chain as a percentile score with respect to all X-ray entries followed by that with respect to entries of similar resolution.

The Analysed column shows the number of residues for which the backbone conformation was analysed, and the total number of residues.

Mol	Chain	Analysed	Favoured	Allowed	Outliers	Percentiles	
1	A	179/181 (99%)	178 (99%)	1 (1%)	0	100	100
1	B	174/181 (96%)	171 (98%)	3 (2%)	0	100	100
All	All	353/362 (98%)	349 (99%)	4 (1%)	0	100	100

There are no Ramachandran outliers to report.

5.3.2 Protein sidechains [i](#)

In the following table, the Percentiles column shows the percent sidechain outliers of the chain as a percentile score with respect to all X-ray entries followed by that with respect to entries of similar resolution.

The Analysed column shows the number of residues for which the sidechain conformation was analysed, and the total number of residues.

Mol	Chain	Analysed	Rotameric	Outliers	Percentiles	
1	A	143/143 (100%)	141 (99%)	2 (1%)	67	42
1	B	138/143 (96%)	135 (98%)	3 (2%)	52	22
All	All	281/286 (98%)	276 (98%)	5 (2%)	59	30

All (5) residues with a non-rotameric sidechain are listed below:

Mol	Chain	Res	Type
1	A	1	MET
1	A	170	GLU
1	B	6	HIS
1	B	121	ARG
1	B	163	ILE

Sometimes sidechains can be flipped to improve hydrogen bonding and reduce clashes. All (2) such sidechains are listed below:

Mol	Chain	Res	Type
1	A	2	HIS
1	A	55	HIS

5.3.3 RNA [i](#)

There are no RNA molecules in this entry.

5.4 Non-standard residues in protein, DNA, RNA chains [i](#)

There are no non-standard protein/DNA/RNA residues in this entry.

5.5 Carbohydrates [i](#)

There are no monosaccharides in this entry.

5.6 Ligand geometry [i](#)

5 ligands are modelled in this entry.

In the following table, the Counts columns list the number of bonds (or angles) for which Mogul statistics could be retrieved, the number of bonds (or angles) that are observed in the model and the number of bonds (or angles) that are defined in the Chemical Component Dictionary. The Link column lists molecule types, if any, to which the group is linked. The Z score for a bond

length (or angle) is the number of standard deviations the observed value is removed from the expected value. A bond length (or angle) with $|Z| > 2$ is considered an outlier worth inspection. RMSZ is the root-mean-square of all Z scores of the bond lengths (or angles).

Mol	Type	Chain	Res	Link	Bond lengths			Bond angles		
					Counts	RMSZ	# Z > 2	Counts	RMSZ	# Z > 2
2	COA	A	600	-	43,50,50	1.47	6 (13%)	56,75,75	1.47	5 (8%)
3	KAN	A	500	-	34,35,35	1.00	2 (5%)	47,52,52	1.33	7 (14%)
3	KAN	B	501	-	34,35,35	1.22	5 (14%)	47,52,52	1.13	3 (6%)
2	COA	B	601	-	43,50,50	1.72	9 (20%)	56,75,75	1.13	3 (5%)
4	PAP	A	602	-	28,33,33	1.90	5 (17%)	37,52,52	1.34	7 (18%)

In the following table, the Chirals column lists the number of chiral outliers, the number of chiral centers analysed, the number of these observed in the model and the number defined in the Chemical Component Dictionary. Similar counts are reported in the Torsion and Rings columns. '-' means no outliers of that kind were identified.

Mol	Type	Chain	Res	Link	Chirals	Torsions	Rings
2	COA	A	600	-	-	3/44/64/64	0/3/3/3
3	KAN	A	500	-	-	3/12/72/72	0/3/3/3
3	KAN	B	501	-	-	3/12/72/72	0/3/3/3
2	COA	B	601	-	-	6/44/64/64	0/3/3/3
4	PAP	A	602	-	-	2/17/37/37	0/3/3/3

All (27) bond length outliers are listed below:

Mol	Chain	Res	Type	Atoms	Z	Observed(Å)	Ideal(Å)
4	A	602	PAP	PA-O3A	5.88	1.65	1.59
2	B	601	COA	P3B-O3B	5.40	1.69	1.59
2	A	600	COA	O4B-C1B	4.94	1.47	1.40
4	A	602	PAP	O4'-C1'	4.20	1.46	1.40
2	A	600	COA	P3B-O3B	3.89	1.66	1.59
2	B	601	COA	OAP-CAP	3.79	1.49	1.42
2	B	601	COA	C4A-N3A	3.59	1.40	1.35
3	B	501	KAN	C14-C15	3.38	1.57	1.53
4	A	602	PAP	PB-O3B	3.20	1.66	1.54
2	B	601	COA	C2A-N1A	3.01	1.39	1.33
2	B	601	COA	C2A-N3A	2.99	1.36	1.32
2	B	601	COA	O4B-C1B	2.99	1.44	1.40
4	A	602	PAP	C2-N1	2.66	1.38	1.33
4	A	602	PAP	P-O3'	2.59	1.64	1.59
2	B	601	COA	P2A-O4A	-2.52	1.42	1.50

Continued on next page...

Continued from previous page...

Mol	Chain	Res	Type	Atoms	Z	Observed(Å)	Ideal(Å)
2	A	600	COA	C9P-N8P	2.47	1.39	1.33
2	A	600	COA	C5P-N4P	2.46	1.39	1.33
3	A	500	KAN	O10-C9	2.41	1.48	1.43
3	B	501	KAN	O5-C1	2.21	1.47	1.41
3	B	501	KAN	C4-C5	-2.20	1.48	1.53
3	B	501	KAN	O11-C13	2.20	1.47	1.41
2	B	601	COA	C7P-C6P	2.18	1.58	1.51
3	A	500	KAN	C16-C15	2.12	1.56	1.53
2	B	601	COA	C5P-N4P	2.11	1.38	1.33
2	A	600	COA	O2B-C2B	2.09	1.48	1.43
3	B	501	KAN	C15-N4	2.04	1.50	1.47
2	A	600	COA	P1A-O2A	-2.00	1.46	1.55

All (25) bond angle outliers are listed below:

Mol	Chain	Res	Type	Atoms	Z	Observed(°)	Ideal(°)
2	A	600	COA	C1B-N9A-C4A	-6.29	115.58	126.64
2	B	601	COA	O4B-C1B-N9A	5.14	115.56	108.75
3	A	500	KAN	C17-C16-C15	-3.81	106.46	110.67
2	A	600	COA	N3A-C2A-N1A	-3.36	124.11	128.67
3	A	500	KAN	O9-C10-C11	-3.31	101.27	109.18
2	A	600	COA	C4A-C5A-N7A	3.24	112.76	109.34
3	A	500	KAN	O5-C5-C6	3.14	112.10	106.07
3	A	500	KAN	C13-O12-C17	2.74	119.08	113.72
3	A	500	KAN	C1-O5-C5	2.74	119.06	113.72
2	A	600	COA	O3B-P3B-O7A	-2.67	99.82	109.33
4	A	602	PAP	O4'-C1'-N9	2.67	112.28	108.75
4	A	602	PAP	O3B-PB-O3A	2.67	113.57	104.64
3	B	501	KAN	C1-O9-C10	2.66	124.29	117.98
3	B	501	KAN	C13-O12-C17	2.58	118.76	113.72
2	B	601	COA	O2A-P1A-O3A	2.52	114.09	107.27
4	A	602	PAP	C4'-O4'-C1'	-2.48	107.66	109.92
3	B	501	KAN	O11-C13-O12	-2.47	104.19	110.69
4	A	602	PAP	C1'-N9-C4	-2.44	122.35	126.64
4	A	602	PAP	N6-C6-N1	2.40	123.47	118.33
2	A	600	COA	C7P-C6P-C5P	2.29	116.21	112.39
4	A	602	PAP	C4-C5-N7	2.28	111.75	109.34
4	A	602	PAP	O2A-PA-O3A	2.27	113.40	107.27
3	A	500	KAN	O5-C5-C4	2.20	113.67	109.70
2	B	601	COA	N6A-C6A-N1A	2.04	122.69	118.33
3	A	500	KAN	C1-C2-C3	-2.03	105.74	110.01

There are no chirality outliers.

All (17) torsion outliers are listed below:

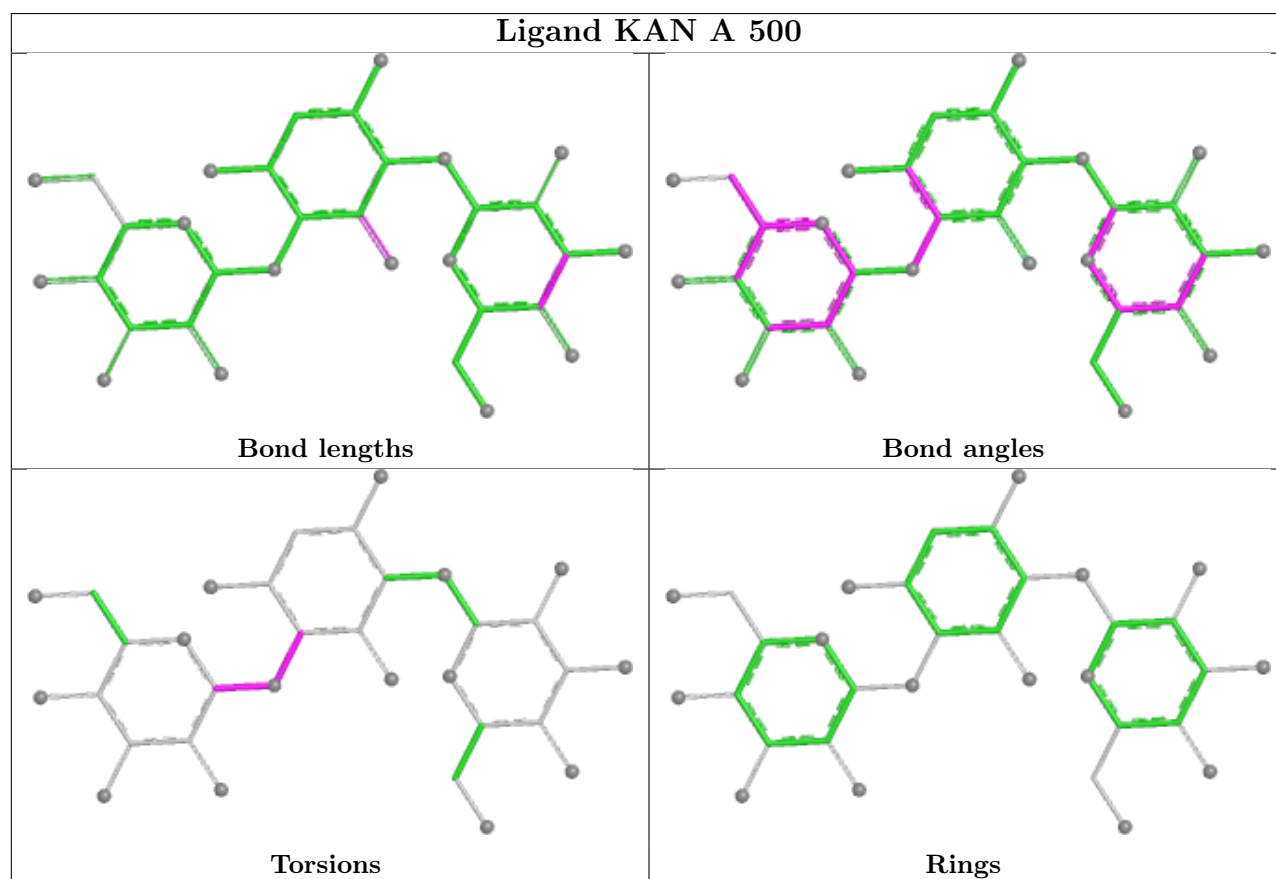
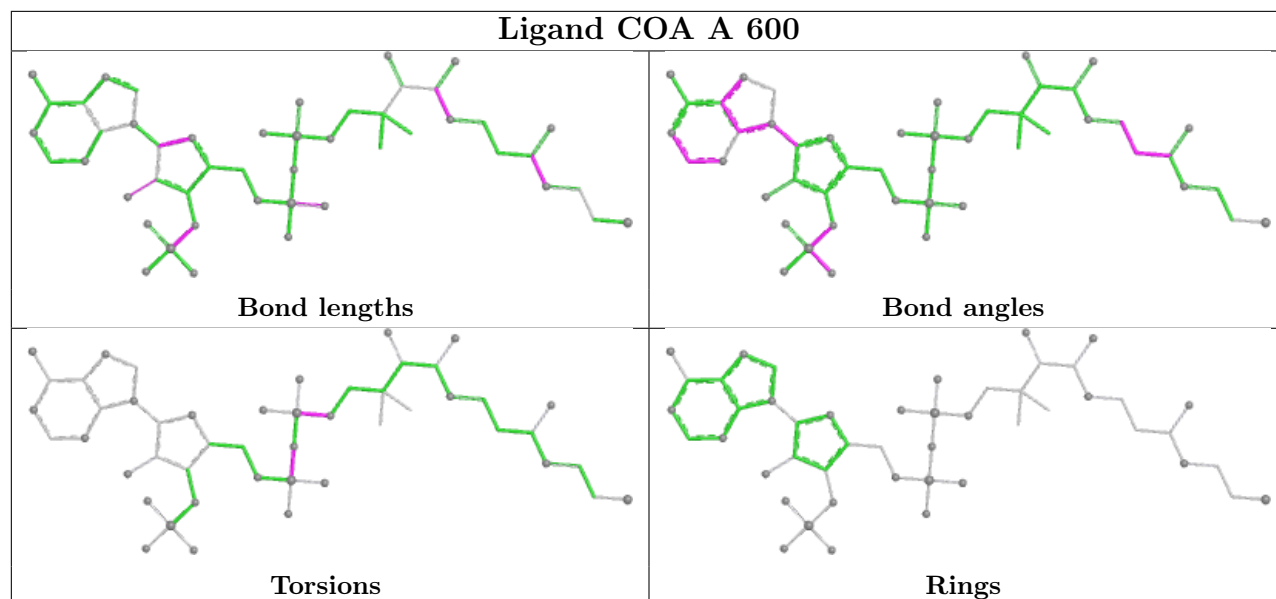
Mol	Chain	Res	Type	Atoms
2	A	600	COA	CCP-O6A-P2A-O3A
2	B	601	COA	CCP-O6A-P2A-O3A
3	A	500	KAN	O5-C1-O9-C10
3	B	501	KAN	C9-C10-O9-C1
3	B	501	KAN	O5-C1-O9-C10
3	A	500	KAN	C9-C10-O9-C1
3	A	500	KAN	C11-C10-O9-C1
3	B	501	KAN	C11-C10-O9-C1
2	A	600	COA	P2A-O3A-P1A-O1A
2	B	601	COA	P2A-O3A-P1A-O2A
4	A	602	PAP	PB-O3A-PA-O2A
2	B	601	COA	C3B-O3B-P3B-O9A
2	A	600	COA	P2A-O3A-P1A-O2A
2	B	601	COA	C3B-O3B-P3B-O8A
2	B	601	COA	C3B-O3B-P3B-O7A
4	A	602	PAP	C4'-C5'-O5'-PA
2	B	601	COA	P2A-O3A-P1A-O1A

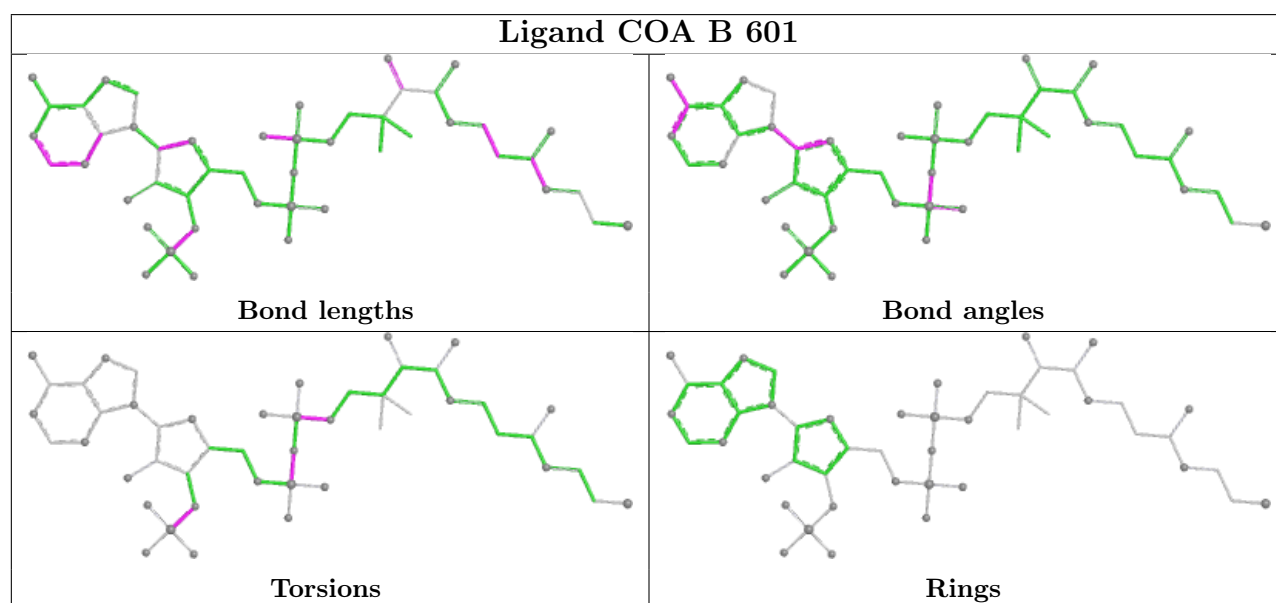
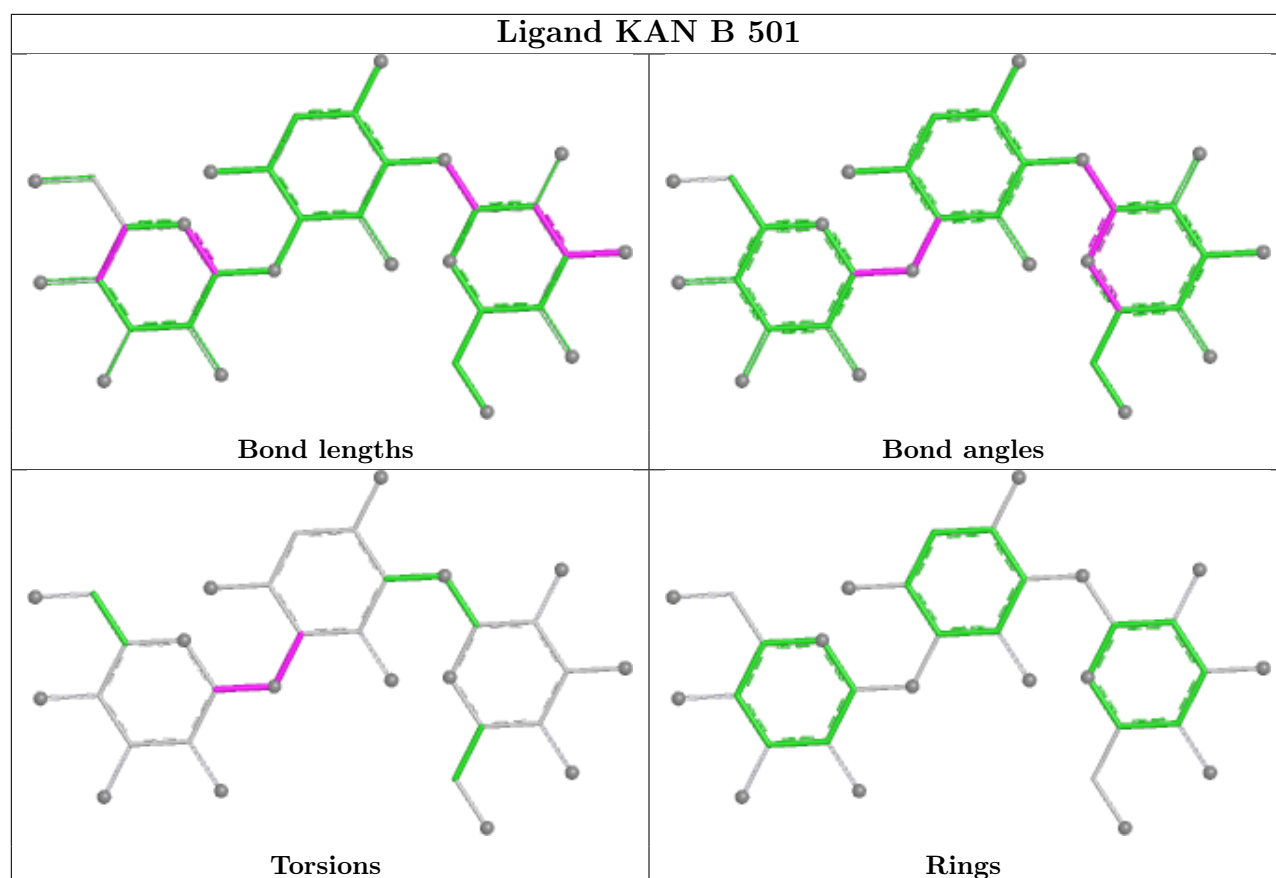
There are no ring outliers.

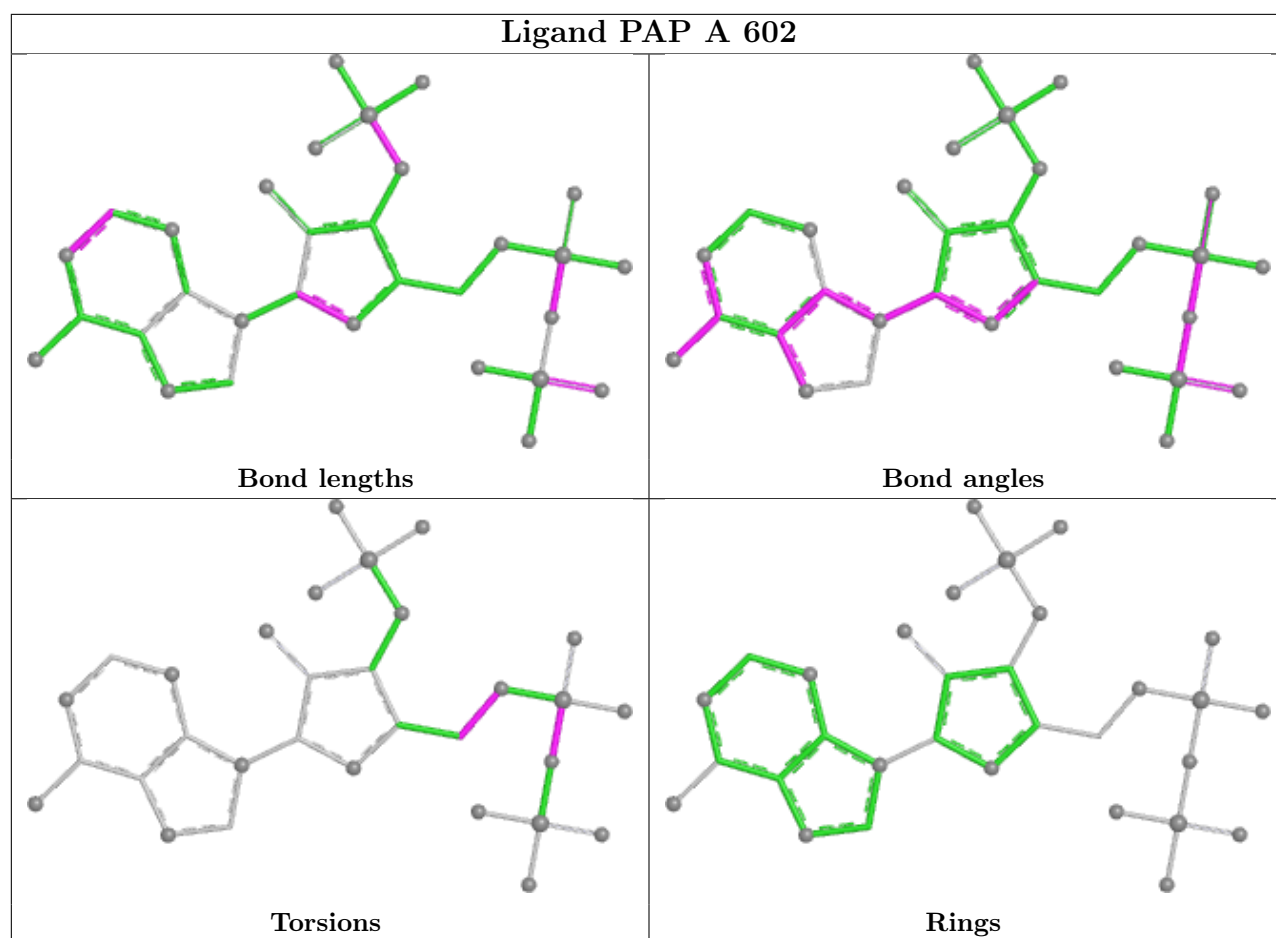
2 monomers are involved in 2 short contacts:

Mol	Chain	Res	Type	Clashes	Symm-Clashes
2	A	600	COA	1	0
4	A	602	PAP	1	0

The following is a two-dimensional graphical depiction of Mogul quality analysis of bond lengths, bond angles, torsion angles, and ring geometry for all instances of the Ligand of Interest. In addition, ligands with molecular weight > 250 and outliers as shown on the validation Tables will also be included. For torsion angles, if less than 5% of the Mogul distribution of torsion angles is within 10 degrees of the torsion angle in question, then that torsion angle is considered an outlier. Any bond that is central to one or more torsion angles identified as an outlier by Mogul will be highlighted in the graph. For rings, the root-mean-square deviation (RMSD) between the ring in question and similar rings identified by Mogul is calculated over all ring torsion angles. If the average RMSD is greater than 60 degrees and the minimal RMSD between the ring in question and any Mogul-identified rings is also greater than 60 degrees, then that ring is considered an outlier. The outliers are highlighted in purple. The color gray indicates Mogul did not find sufficient equivalents in the CSD to analyse the geometry.







5.7 Other polymers [i](#)

There are no such residues in this entry.

5.8 Polymer linkage issues [i](#)

There are no chain breaks in this entry.

6 Fit of model and data

6.1 Protein, DNA and RNA chains

In the following table, the column labelled ‘#RSRZ > 2’ contains the number (and percentage) of RSRZ outliers, followed by percent RSRZ outliers for the chain as percentile scores relative to all X-ray entries and entries of similar resolution. The OWAB column contains the minimum, median, 95th percentile and maximum values of the occupancy-weighted average B-factor per residue. The column labelled ‘Q < 0.9’ lists the number of (and percentage) of residues with an average occupancy less than 0.9.

Mol	Chain	Analysed	<RSRZ>	#RSRZ>2	OWAB(Å ²)	Q<0.9
1	A	181/181 (100%)	0.64	14 (7%) 13 14	8, 12, 28, 42	0
1	B	176/181 (97%)	0.88	21 (11%) 4 4	8, 14, 32, 43	0
All	All	357/362 (98%)	0.76	35 (9%) 7 7	8, 13, 30, 43	0

All (35) RSRZ outliers are listed below:

Mol	Chain	Res	Type	RSRZ
1	B	6	HIS	7.4
1	B	55	HIS	5.6
1	B	163	ILE	5.1
1	B	162	ASP	4.8
1	A	1	MET	4.7
1	B	120	ALA	4.4
1	A	121	ARG	4.3
1	B	56	GLY	4.1
1	A	124	ARG	4.0
1	A	125	LEU	3.8
1	A	162	ASP	3.7
1	A	163	ILE	3.6
1	B	121	ARG	3.5
1	B	124	ARG	3.3
1	B	17	ASP	3.2
1	A	34	GLY	3.0
1	B	7	THR	2.9
1	B	19	GLU	2.9
1	B	53	TRP	2.9
1	A	33	ALA	2.8
1	B	84	VAL	2.8
1	B	54	HIS	2.8
1	A	144	THR	2.8
1	B	9	ARG	2.7

Continued on next page...

Continued from previous page...

Mol	Chain	Res	Type	RSRZ
1	B	93	GLN	2.7
1	B	144	THR	2.5
1	B	94	ARG	2.5
1	A	35	ASP	2.5
1	B	18	SER	2.5
1	B	158	VAL	2.4
1	A	120	ALA	2.3
1	A	81	VAL	2.3
1	A	127	ALA	2.3
1	B	34	GLY	2.3
1	A	22	GLN	2.1

6.2 Non-standard residues in protein, DNA, RNA chains [i](#)

There are no non-standard protein/DNA/RNA residues in this entry.

6.3 Carbohydrates [i](#)

There are no monosaccharides in this entry.

6.4 Ligands [i](#)

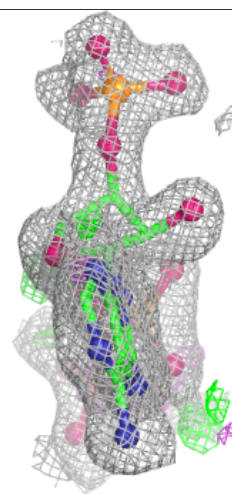
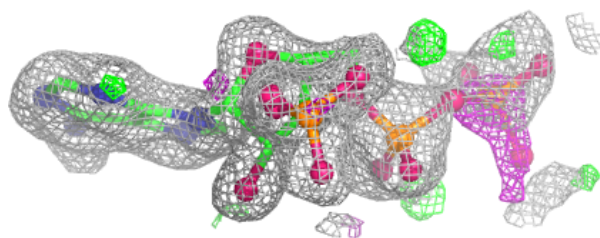
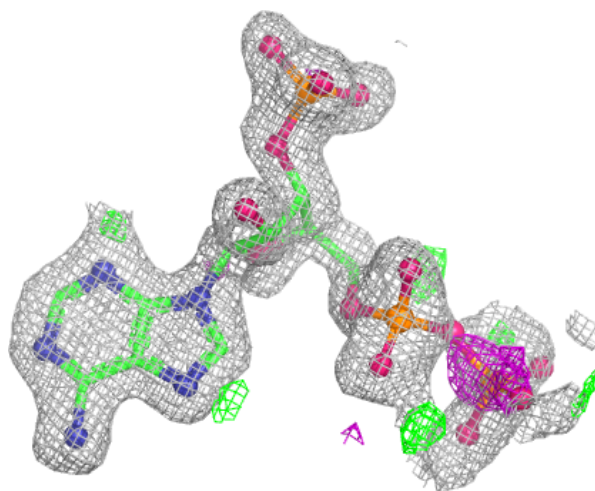
In the following table, the Atoms column lists the number of modelled atoms in the group and the number defined in the chemical component dictionary. The B-factors column lists the minimum, median, 95th percentile and maximum values of B factors of atoms in the group. The column labelled 'Q<0.9' lists the number of atoms with occupancy less than 0.9.

Mol	Type	Chain	Res	Atoms	RSCC	RSR	B-factors(Å ²)	Q<0.9
4	PAP	A	602	31/31	0.81	0.22	22,27,48,49	0
2	COA	B	601	48/48	0.84	0.23	15,26,63,63	0
3	KAN	A	500	33/33	0.87	0.13	15,19,29,32	0
3	KAN	B	501	33/33	0.91	0.10	12,15,23,29	0
2	COA	A	600	48/48	0.92	0.12	10,19,32,34	0

The following is a graphical depiction of the model fit to experimental electron density of all instances of the Ligand of Interest. In addition, ligands with molecular weight > 250 and outliers as shown on the geometry validation Tables will also be included. Each fit is shown from different orientation to approximate a three-dimensional view.

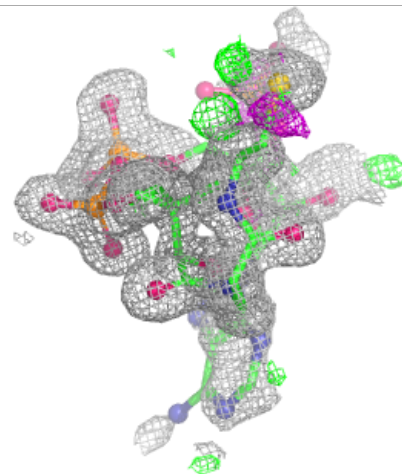
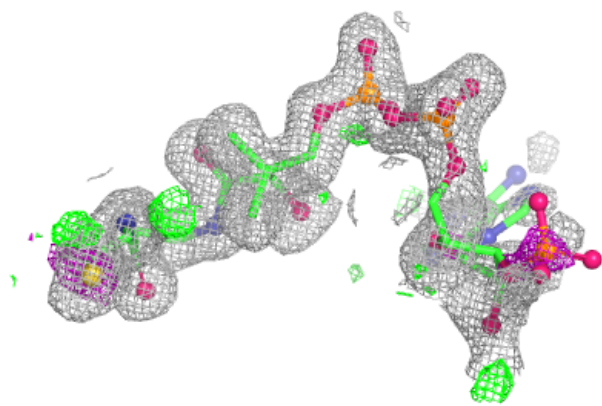
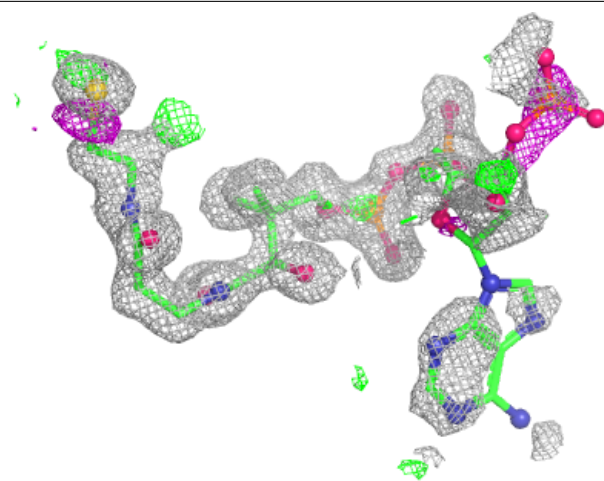
Electron density around PAP A 602:

$2mF_o-DF_c$ (at 0.7 rmsd) in gray
 mF_o-DF_c (at 3 rmsd) in purple (negative)
and green (positive)



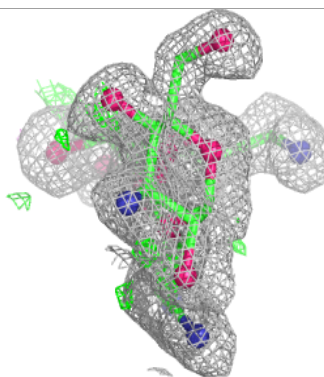
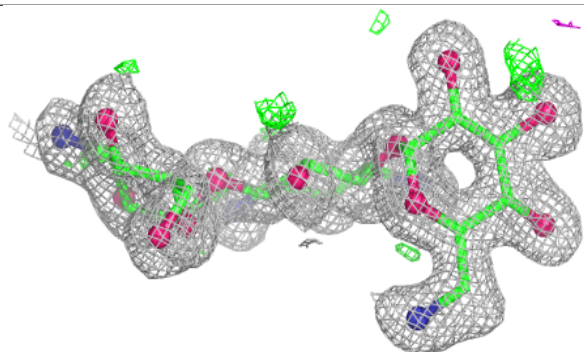
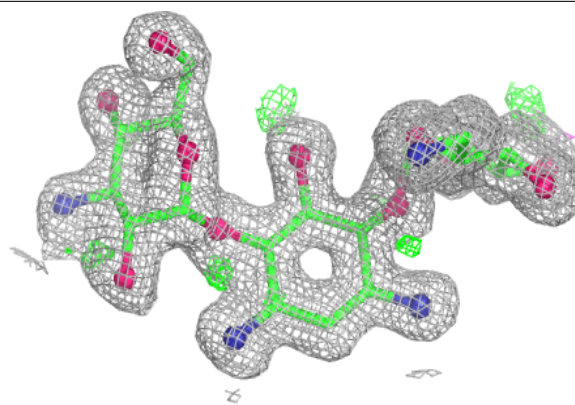
Electron density around COA B 601:

$2mF_o-DF_c$ (at 0.7 rmsd) in gray
 mF_o-DF_c (at 3 rmsd) in purple (negative)
and green (positive)

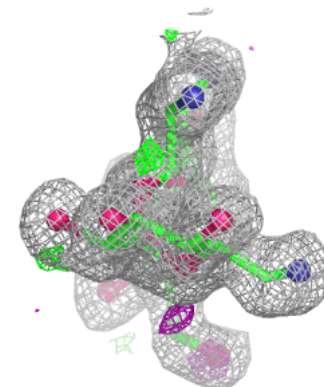
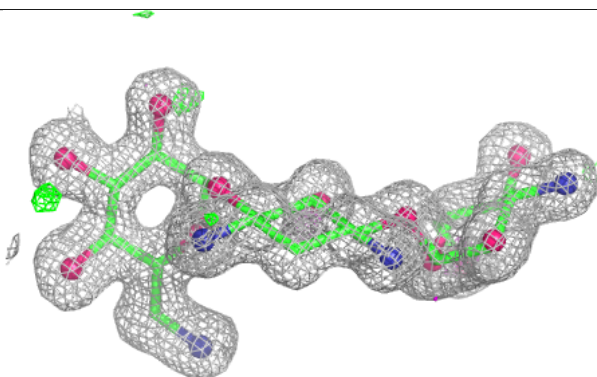
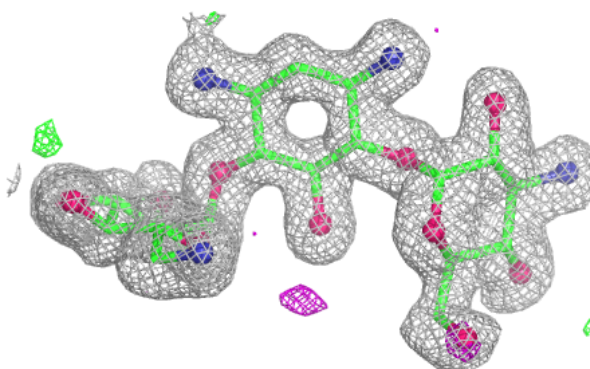


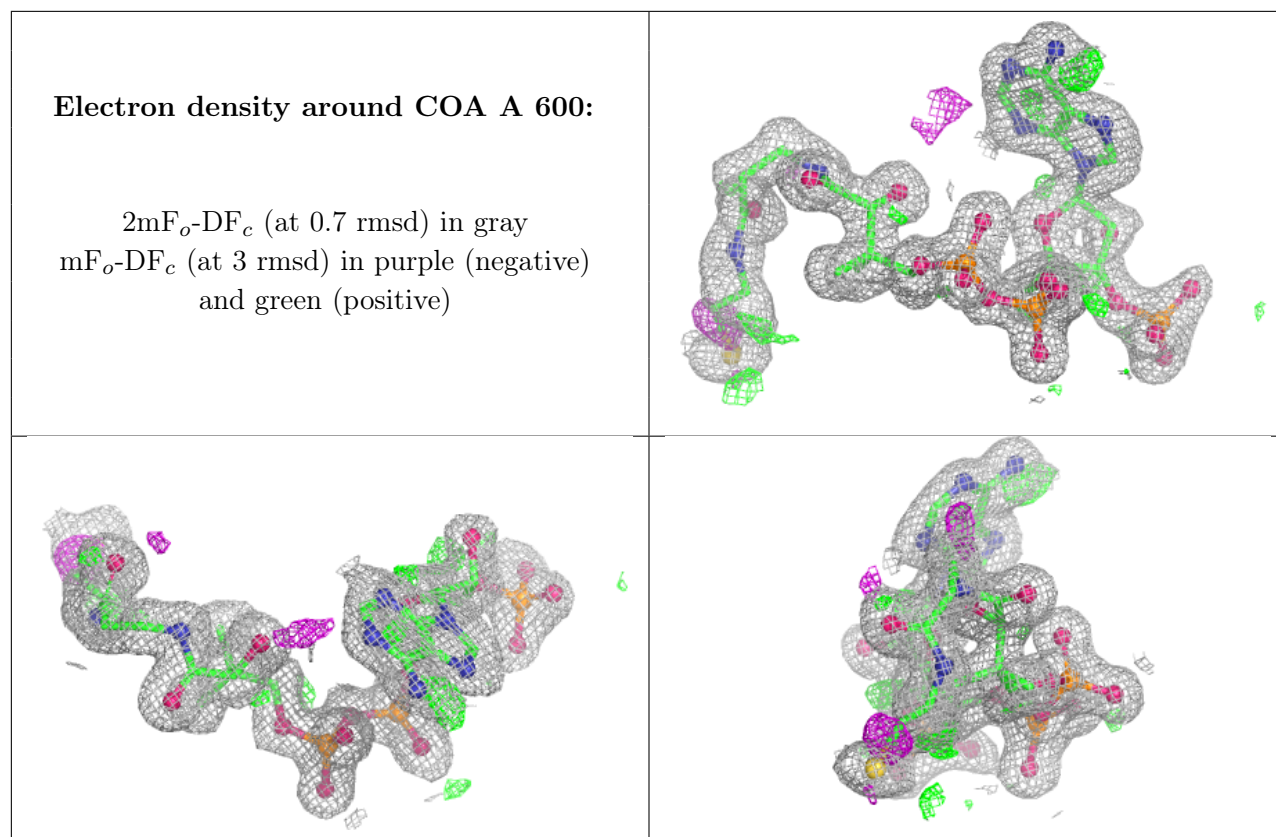
Electron density around KAN A 500:

$2mF_o-DF_c$ (at 0.7 rmsd) in gray
 mF_o-DF_c (at 3 rmsd) in purple (negative)
and green (positive)

**Electron density around KAN B 501:**

$2mF_o-DF_c$ (at 0.7 rmsd) in gray
 mF_o-DF_c (at 3 rmsd) in purple (negative)
and green (positive)





6.5 Other polymers [i](#)

There are no such residues in this entry.